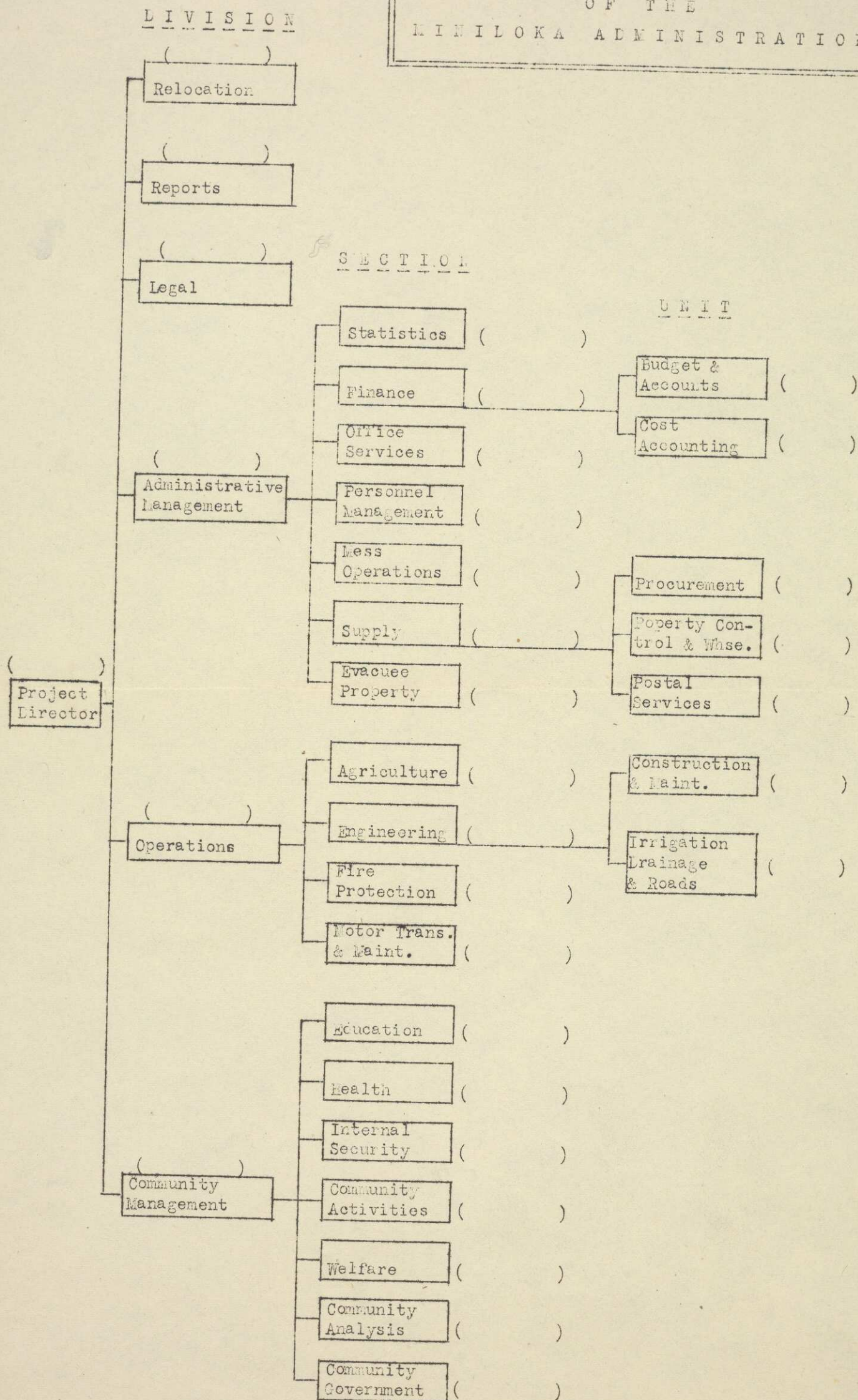


# ORGANIZATIONAL CHART OF THE MINILOKA ADMINISTRATION





Minidoka Relocation Center

(Chart #1 of 4 charts)

OFFICE OF PROJECT DIRECTOR

Project Director  
Secretary

CAF-14 6500  
CAF-5 2000

LEGAL DIVISION

Attorney  
Secretary

P-5 4600  
CAF-4 1800

REPORTS DIVISION

Reports Officer

CAF-11 3800

RELOCATION DIVISION

Relocation Program Officer CAF-12 4600  
Asst. Rel. Program Officer CAF-11 3800  
Relocation Adviser CAF-9 3200  
Leave Officer CAF-7 2600

CENTER NEWS SECTION

No appointive personnel

COMMUNITY MANAGEMENT DIVISION

(See chart #2)

OPERATIONS DIVISION

(See chart #4)

ADMINISTRATIVE MANAGEMENT DIVISION

(See chart #3)



Minidoka Relocation Center

(Chart #2 of 4 charts)

COMMUNITY MANAGEMENT DIVISION

Assistant Project Director CAF-13 5600

EDUCATION SECTION

Superintendent of Ed.	P-5	4600
Sup'r. of Student Teacher	P-2	2600
Jr.Sr.Hi-Sch. Principal	P-4	3800
Asst.Jr.Sr.Hi-Sch.Prin.	P-3	3200
Vocational Adviser	P-2	2600
Head Teacher (6)	P-2	2600
Sec. Sch. Teacher (32)	P-1	2000
Librarian	P-1	2000
Ele. Sch. Teacher (21)	SP-4	1620
Ele. Sch. Principal	P-3	3200
Vocational Teacher	SP-8	2600
Vocational Trg. Supvr.	P-3	3200
Adult Education Adviser	P-3	3200

INTERNAL SECURITY SECTION

Chief of Internal Sec.	CAF-11	3800
Asst. Chief of I.S. (2)	CAF-9	3200
Internal Security Off.	CAF-7	2600
Secretary	CAF-3	1620

WELFARE SECTION

Counselor	CAF-11	3800
Asst. Counselor (2)	CAF-9	3200
Jr. Counselor (6)	CAF-7	2600
Secretary	CAF-3	1620

HEALTH SECTION

Prin. Medical Officer	P-6	5600
Senior Medical Officer	P-5	4600
Medical Officer (2)	P-4	3800
Hospital Administrator	CAF-9	3200
Med. Social Worker	P-2	2600
Dietician	SP-8	2600
Sanitarian	SP-8	2600
X-Ray Technician	SP-6	2000
Chief Nurse	SP-8	2600
Asst. Chief Nurse (2)	SP-7	2300
Supervising Nurse (5)	SP-6	2000
Sr. Staff Nurse (5)	SP-5	1800
Jr. Staff Nurse	SP-4	1620

COMMUNITY ACTIVITIES SECTION

Community Activities Sup'r.	CAF-9	3200
-----------------------------	-------	------

COMMUNITY ANALYSIS SECTION

Community Analyst	P-4	3800
-------------------	-----	------

BUSINESS ENTERPRISES SECTION

Business Ent.Sup'r.	CAF-11	3800
---------------------	--------	------

COMMUNITY GOVERNMENT SECTION

No appointive personnel



Minidoka Relocation Center

(Chart #3 of 4 charts)

ADMINISTRATIVE MANAGEMENT DIVISION

Assistant Project Director CAF-13 5600

SUPPLY SECTION

Supply Officer CAF-12 4600

FINANCE SECTION

Finance Officer CAF-12 4600

PROCUREMENT UNIT

Procurement Officer CAF-11 3800  
Asst. Procurement Off. CAF-9 3200  
Procurement Clerk CAF-5 2000

MESS OPERATIONS UNIT

Chief Project Steward CAF-11 3800  
Project Steward (2) CAF-9 3200  
Storekeeper CAF-5 2000

BUDGET & ACCOUNTS UNIT

Fiscal Accountant CAF-11 3800  
Asst. Fiscal Accountant CAF-9 3200  
Jr. Fiscal Accountant CAF-7 2600  
Fiscal Accounting Clerk CAF-5 2000  
Auditor CAF-9 3200  
Assistant Auditor CAF-7 2600  
Audit Clerk CAF-5 2000  
Agent Cashier CAF-6 2300

COST ACCOUNTING & PROPERTY CONTROL UNIT

Cost Accountant CAF-11 3800  
Asst. Cost Accountant CAF-9 3200  
Jr. Cost Accountant CAF-7 2600  
Cost Accounting Clerk CAF-5 2000  
Property & Whse. Officer CAF-9 3200  
Storekeeper CAF-7 2600  
Asst. Storekeeper (5) CAF-5 2000  
Receiving & Shipping S. CAF-6 2300  
Property Officer CAF-7 2600  
Property Clerk CAF-5 2000

POSTAL SERVICE UNIT

Guard CPC-2 1200

EVACUEE PROPERTY SECTION

Evacuee Property Off. CAF-11 3800

PERSONNEL MANAGEMENT SECTION

Personnel Officer CAF-12 4600  
Asst. Personnel Officer CAF-11 3800  
Personnel Technician CAF-9 3200  
Personnel Transactions Off. CAF-7 2600

OFFICE SERVICES SECTION

Office Manager CAF-5 2000  
File Clerk CAF-4 1800  
Sup'r'g. Telephone Opr. CAF-3 1620  
Telephone Operator(3) CAF-2 1440

STATISTICS SECTION

Statistician P-3 3200



Minidoka Relocation Center

(Chart #4 of 4 charts)

OPERATIONS DIVISION

Assistant Project Director CAF-13 5600

ENGINEERING SECTION

Senior Engineer P-5 4600

AGRICULTURE SECTION

Chief of Agriculture P-5 4600  
Farm Superintendent CAF-11 3800  
Assistant Farm Superintendent (2) CAF-9 3200  
Foreman (2) CPC-6 1860

IRRIGATION, DRAINAGE & ROADS UNIT

Irr.(or Drain.) Engr. P-4 3800  
Chief Const. Foreman CPC-10 2600  
Sr. Const. Foreman CPC-8 2200  
Stone Mason Unal.

CONSTRUCTION & MAINTENANCE UNIT

Const. & Maint. Supt. CAF-11 3800  
Asst. Const. Supt. (2) CAF-9 3200  
Utility Operations Supt. CPC-10 2600  
Carpenter Foreman (4) CPC-8 2200  
Foreman Plumber CPC-8 2200  
Senior Plumber CPC-7 2040  
Plumber (temp) Unal. \$1.50 ph  
Carpenter (3) (temp) Unal. 1.25 ph  
Pump Operator (temp) Unal. .80 ph  
Chief Foreman Electrician CPC-10 2600

MOTOR TRANSPORT & MAINTENANCE SECTION

Equip. Maint. Sup'r. CAF-9 3200  
Asst. Equip. Maint. Sup'r. CAF-7 2600  
Motor Pool Supervisor CAF-7 2600  
Foreman Mechanic (3) CPC-8 2200  
Senior Mechanic (4) CPC-7 2040  
Junior Mechanic (2) CPC-5 1680  
Dispatcher CAF-5 2000  
Dragline Operator (temp) Unal. \$1.50 ph  
Patrol Operator (temp) Unal. 1.50 ph  
Shovel Operator (temp) Unal. 1.50 ph

INDUSTRY SECTION

Foreman CPC-6 1860

FIRE PROTECTION SECTION

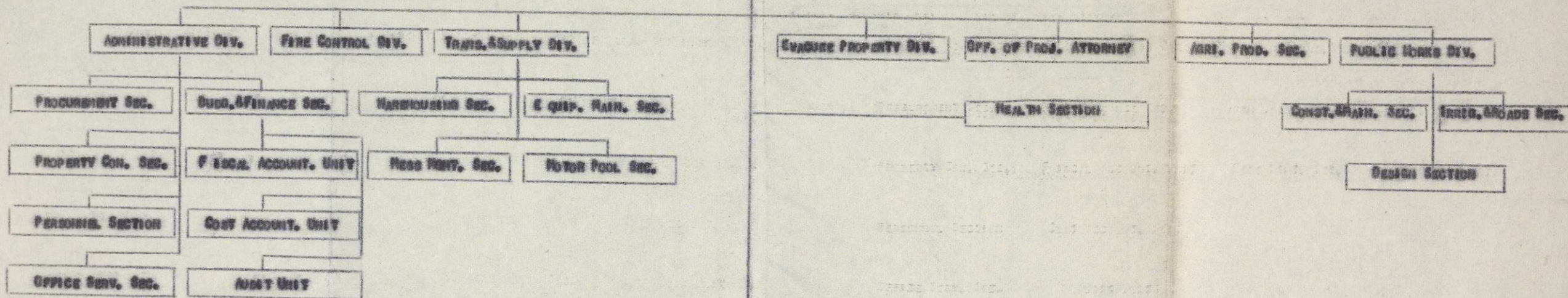
Fire Protection officer CAF-11 3800  
Asst. Fire Prot. Officer CAF-9 3200



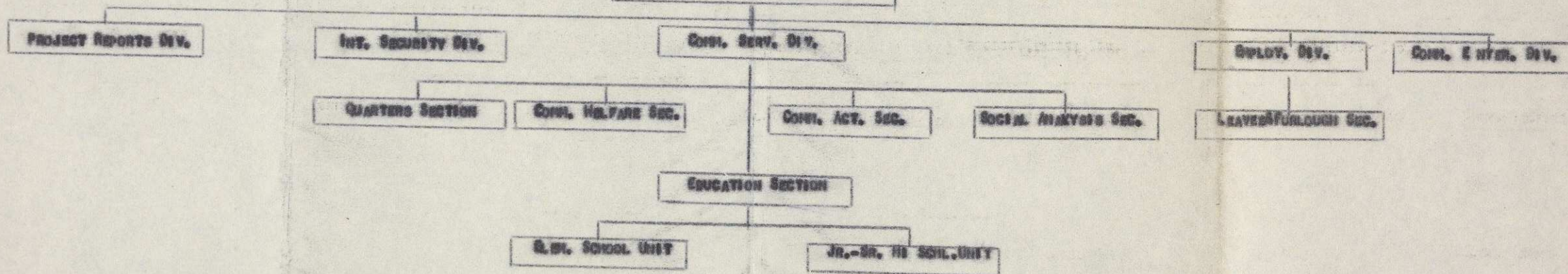
ORGANIZATION CHART  
HINSHOKA WAR RELOCATION PROJECT  
HUNT, IDAHO  
MARCH 27, 1943



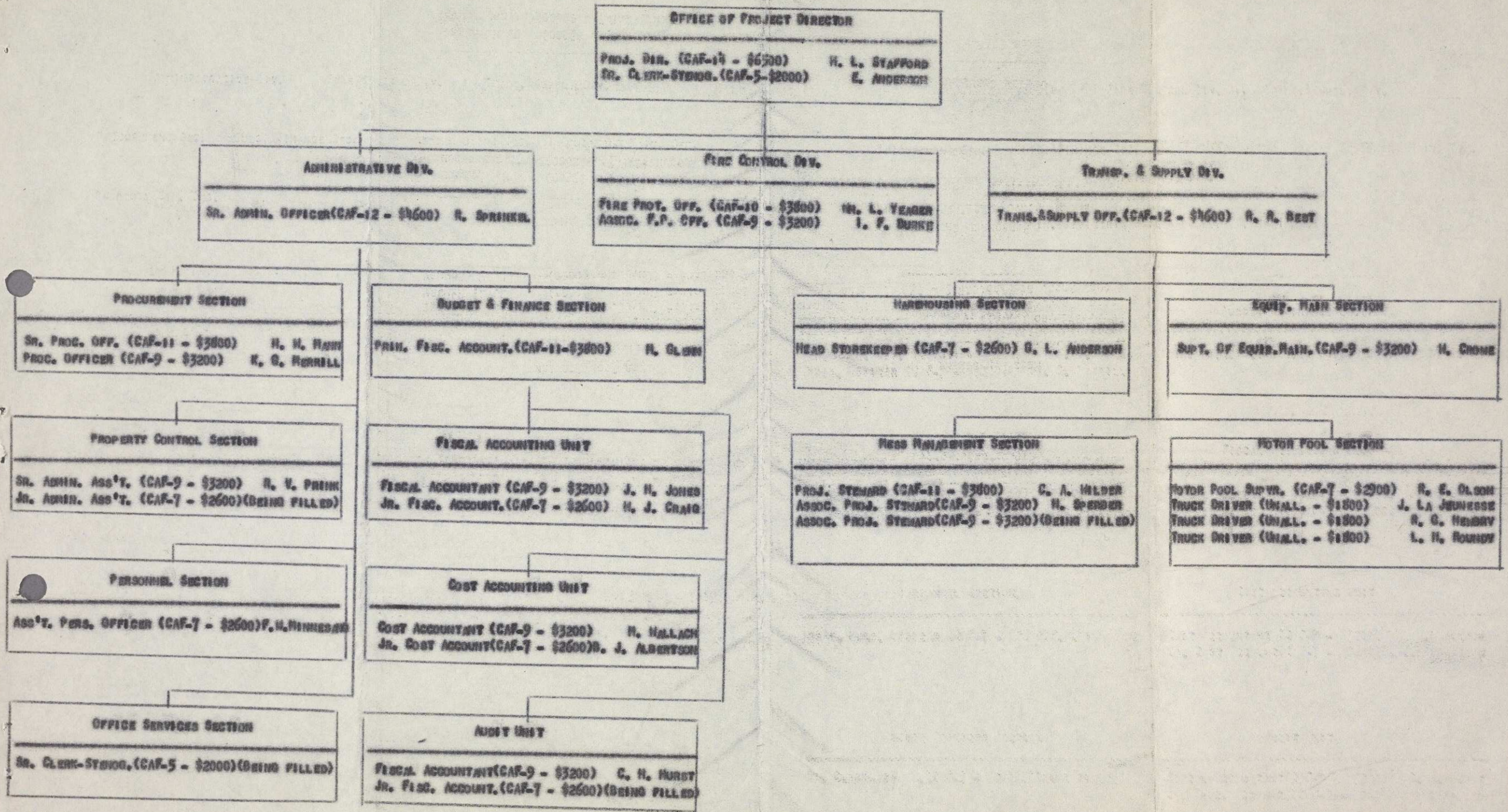
OFFICE OF PROJECT DIRECTOR



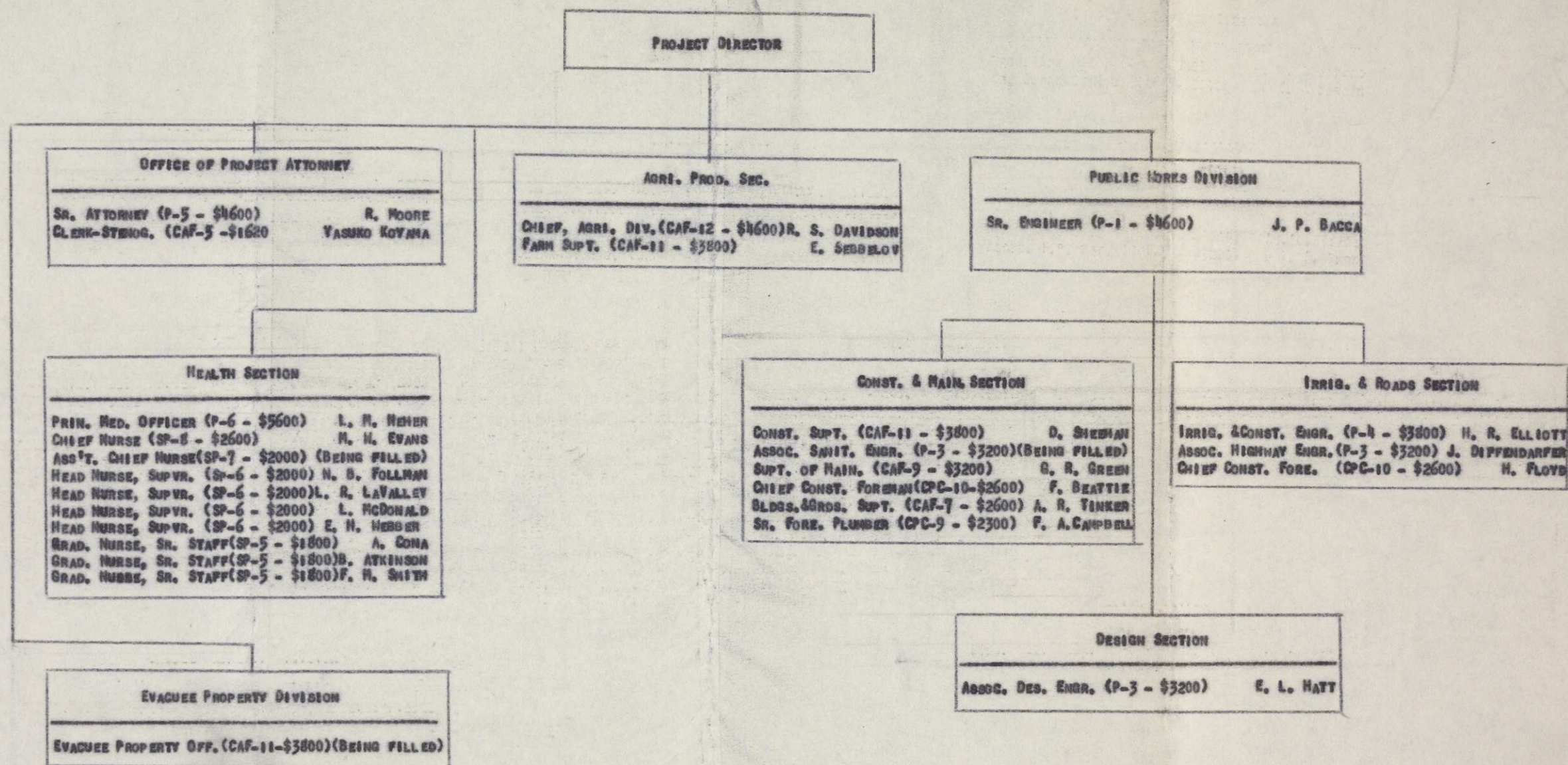
OFFICE OF ASSISTANT DIRECTOR













## PROJECT DIRECTOR

## OFFICE OF ASSISTANT DIRECTOR

Ass't. Proj. Dir. (CAF-13 - \$5600) P. SCHAFER

## PROJECT REPORTS DIVISION

REPORTS OFFICER (CAF-11 - \$3800) J. BIGNLOW

## INTERNAL SECURITY DIVISION

CHIEF, INT. SEC. (CAF-11 - \$3800) (BEING FILLED)  
 ASSOC. INT. SEC. OFF. (CAF-9 - \$3200) K. BARCLAY  
 ASSOC. INT. SEC. OFF. (CAF-9 - \$3200) V. K. BARRON

## EMPLOYMENT DIVISION

SR. EMPLOY. OFF. (CAF-12 - \$4600) J. G. BEESON

## LEAVES &amp; FURLOUGH SECTION

LEAVE OFFICER (CAF-9 - \$3200) T. WILLIAMSON

## COMMUNITY ENTERPRISES DIVISION

COMM. ENTER. SUPT. (CAF-11 - \$3800) J. ESSENE  
 ASSOC. COMM. ENT. SUPT. (CAF-9 - \$3200) E. B. INGHAM



PROJECT DIRECTOR
ASSISTANT DIRECTOR
COMMUNITY SERVICES DIVISION
CHIEF COMM. SERV. (CAF-13 - \$5600) G. TOWNSEND

QUARTERS SECTION
HOUSING SUPERINTENDENT (CAF-7-\$2600) (BEING FILLED)

COMMUNITY WELFARE SECTION
COUNSELOR (CAF-11 - \$3800) C. V. SINDOZ ASSOC. COUN. (CAF-9 - \$3200) (BEING FILLED)

COMMUNITY ACTIVITIES SECTION
COMM. ACT. SUPER. (CAF-9-\$3200) (BEING FILLED)

SOCIAL ANALYSIS SECTION
SOCIAL SCIENCE ANALYST (P-4-\$3800) J. E. DEYOUNG

EDUCATION SECTION
SUPV. OF EDUC. (P-5 - \$4600) R. POMEROY CURRICULUM ADVISOR (CAF-9-\$3200) (BEING FILLED) NIGHT SCH. DIR. (CAF-9 - \$3200) J. J. FORBITY SUPERV. OF STUD. TEACH. (CAF-7-\$2600) A. KLEINKOPF

ELEMENTARY SCHOOL UNIT
GRADE SCH. PRIN. (CAF-9-\$3200) H. E. BRINNETT
ASS'T. ELEM. SCH. PRIN. (CAF-7-\$2600) L. HARR
ELEM. SCHOOL TEACHER (CAF-3-\$1620) N. L. BAUMAN
" " J. A. BOATRIGHT
" " H. C. BIRING
" " H. H. HESTER
" " R. E. HULTCRANTZ
" (CAF-2-\$1440) E. B. KLEINKOPF
" (CAF-3-\$1620) E. L. KOCH
" " J. B. KOONTZ
" " G. READINGS
" " A. HORTON
" " K. A. NIKOLAISEN
" " A. PLENNONS
" " H. E. QUINN
" " K. E. RISKOLA
" " L. B. SEFTON
" " R. G. SMITH
" " C. STALL
" " E. G. WINK

JUNIOR-SENIOR HIGH SCH. UNIT
HIGH SCH. PRIN. (P-4-\$3800) J. T. LIGHT
ASS'T. VOC. ADVISOR (CAF-7-\$2600) B. L. JOHNSON
HEALTH & PHYS. EDUC. ADV. (CAF-7-\$2600) V. McLAUGHLIN
VOCATIONAL TEACHER (CAF-7-\$2600) J. V. BRIGGS
" " H. L. CORKILL
" " C. E. FLEISCHMAN
SOC. SCH. TEACH. (CAF-5-\$2000) H. AMERMAN
" " H. E. ANKEN
" " E. C. BOATRIGHT
" " C. G. BOWEN
" " E. E. COAD
" " R. H. COOMBS
" " E. EDWARDS
" " A. B. FICKE
" " G. T. D. SILBERTSON
" " A. E. QUINN
" " F. E. HAGLUND
" " E. D. HENDON
" " J. A. HORNE
" " H. E. HUNT
" " R. MAJOR
" (P-1 - \$2000) G. HARRIS
" (CAF-5 - \$2000) B. PEAVEY
" " H. D. POLLOCK
" " V. E. SATTERFIELD
" " J. L. SISTERHANS
" (P-1 - \$2000) E. R. THARP
" " L. P. RUBLE



*Hinidloha*

OFFICE OF PROJECT DIRECTOR

H. L. Stafford

Project Director

ADMINISTRATIVE DIVISION

R. Sprinkel

Sr. Administrative Officer

PROCUREMENT SECTION

H. W. Mann

Sr. Procurement Officer

K. G. Merrill

Procurement Officer

BUDGET AND FINANCE SECTION

M. Glenn

Prin. Fiscal Accountant

PROPERTY CONTROL SECTION

R. V. Prink

Sr. Administrative Ass't.

FISCAL ACCOUNTING UNIT

J. H. Jones

Fiscal Accountant

W. J. Craig

Jr. Fiscal Accountant

PERSONNEL SECTION

P. W. Minnesang

Personnel Officer

COST ACCOUNTING UNIT

M. Wallach

Cost Accountant

OFFICE SERVICES SECTION

E. Anderson

Sr. Clerk-Stenographer

AUDIT UNIT

C. H. Hurst

Fiscal Accountant

FIRE CONTROL DIVISION

Wm. L. Yeager

Fire Prot. Officer

C. Roraback

Assoc. Fire Prot. Officer

I. F. Burke

Assoc. Fire Prot. Officer



TRANSPORTATION AND SUPPLY DIVISION

R.R. Best

Trans. & Supply Officer

WAREHOUSING SECTION

G. L. Anderson

Head Storekeeper

EQUIPMENT MAINTENANCE SECTION

W. Crowe

Supt. of Equip. Maintenance

MESS MANAGEMENT SECTION

L. V. Krumenacker

Project Steward

C. R. Clinton

Assoc. Project Steward

H. Sperber

Assoc. Project Steward

MOTOR POOL SECTION

R. E. Olson

Motor Pool Supervisor

J. La Jeunesse

Truck Driver

R. G. Newbry

Truck Driver

L. H. Roundy

Truck Driver

OFFICE OF THE PROJECT ATTORNEY

R. Moore

Sr. Attorney

AGRICULTURAL PRODUCTION SECTION

E. Sebbelov

Farm Superintendent

HEALTH SECTION

L. M. Neher

Prin. Medical Officer

M. W. Evans

Chief Nurse

M. Graham

Ass't. Chief Nurse

N. B. Follman

Head Nurse Supvr.

L. McDonald

Head Nurse Supvr.

E. H. Webber

Head Nurse Supvr.

A. Cona

Grad. Nurse Sr. Staff



PUBLIC WORKS DIVISION

J. P. Bacca

Sr. Engineer

CONSTRUCTION & MAINTENANCE SECTION

D. Sheehan  
F. C. Hill  
G. R. Green  
F. Beattie  
A. R. Tinker  
F. A. Campbell  
H. T. Pugh

Construction Supt.  
Assoc. Sanitary Engineer  
Supt. of Maintenance  
Chief Const. Foreman  
Bldgs. & Grounds Supt.  
Sr. Foreman Plumber  
Stone Mason

IRRIGATION AND ROADS SECTION

H. R. Elliott  
J. Diffendarfer  
H. Floyd

Irrig. & Const. Engineer  
Assoc. Highway Engineer  
Chief Const. Foreman

DESIGN SECTION

E. L. Hatt

Assoc. Design Engineer

OFFICE OF ASSISTANT DIRECTOR

P. Schafer

Ass't. Project Director

PROJECT REPORTS DIVISION

J. Bigelow

Reports Officer

INTERNAL SECURITY DIVISION

C. D. Lee  
K. Barclay  
K. Barron

Chief Internal Security  
Assoc. Chief Int. Security  
Assoc. Chief Int. Security



COMMUNITY SERVICES DIVISION

G. Townsend

Chief Community Services

COMMUNITY WELFARE SECTION

C. V. Sandoz

Counselor

EDUCATION SECTION

R. Pomeroy

Superintendent

O. D. Cole

Curriculum Adviser

J. J. Fogarty

Night School Director

A. Kleinkopf

Supervisor of Student Teachers

ELEMENTARY SCHOOL UNIT

M. E. Bennett

Grade School Principal

L. Haug

Ass't. Elem. School Principal

N. L. Bauman

Elementary School Teacher

N. C. Enking

"

M. W. Hester

"

R. E. Hultcrantz

"

E. B. Kleinkopf

"

J. F. Koontz

"

K. A. Nikolaisen

"

M. E. Queen

"

K. E. Riikola

"

I. B. Sifton

"

R. G. Smith

"

C. Stull

"

G. Wahl

"

JUNIOR-SENIOR HIGH SCHOOL UNIT

J. T. Light

High School Principal

G. L. Jensen

Ass't. Vocation Adviser

V. McLaughlin

Health & Physical Education Adviser

J. V. Briggs

Vocational Teacher

M. L. Corkill

Vocational Teacher

C. E. Fleischman

Vocational Teacher

H. Amerman

Secondary School Teacher

M. E. Askew

E. E. Coad

R. W. Coombs

E. Erlandson

A. B. Ficke

M. I. Fletcher

G. T. B. Gilbertson

A. E. Gwinn

F. E. Haglund

E. B. Herndon

J. A. Horne

M. E. Hunt

R. Major

G. Markholm

G. M.



B. Peavey  
M. B. Pollock  
V. E. Satterfield  
J. L. Sistermans  
E. R. Tharp  
L. P. Ruble

Secondary School Teacher  
"  
"  
"  
"  
Librarian

EMPLOYMENT AND HOUSING DIVISION

J. C. Beeson

Sr. Employment Officer

LEAVES AND FURLOUGH SECTION

T. Williamson

Sr. Administrative Ass't.

QUARTERS SECTION

I. B. Ingham

Housing Superintendent

COMMUNITY ENTERPRISES DIVISION

J. Essene

Assoc. Com. Enterprise



MINIDOKA RELOCATION CENTER

January 1, 1944  
9 positions

OFFICE OF PROJECT DIRECTOR  
Project Director CAF-14 6500 ✓  
Secretary CAF-5 2000

LEGAL DIVISION

Attorney P-5 4600 ✓  
Secretary CAF-4 1800 ✓

REPORTS DIVISION

Reports Officer CAF-11 3800 ✓

RELOCATION DIVISION

Relocation Program Officer CAF-12 4600 ✓  
Asst. Relocation Program Officer CAF-11 3800 ✓  
Relocation Advisor CAF-9 ~~CAF-7~~ 2600 3200 ✓  
Leave Officer CAF-7 2600 ✓

CENTER NEWS SECTION

No appointive personnel

COMMUNITY MANAGEMENT DIVISION

(See page 2)

OPERATIONS DIVISION

(See page 4)

ADMINISTRATIVE MANAGEMENT DIVISION

(See page 3)



Office for Emergency Management  
War Relocation Authority  
Relocation Center  
Personnel Chart  
October 20, 1943  
(Chart #2 of 4 charts)

MINIDOKA RELOCATION CENTER

January 1, 1944  
108 positions

COMMUNITY MANAGEMENT DIVISION

Assistant Project Director CAF-13 5600

EDUCATION SECTION

Superintendent of Education ✓ P-5 4600 ✓  
Night School Director ✓ P-3 3200 ✓  
Sup'r. of Student Teachers ✓ P-2 2600 ✓  
Jr. Sr. High School Principal ✓ P-4 3800 ✓  
Asst. Jr. Sr. High School Prin. ✓ P-3 3200 ✓  
Vocational Adviser ✓ P-2 2600 ✓  
Head Teacher (6) ✓ P-2 2600 ✓  
Secondary School Teacher (32) ✓ P-1 2000 ✓  
Librarian ✓ P-1 2000 ✓  
Elementary School Principal ✓ P-3 3200 ✓  
~~Senior Elementary School~~ P-1 2000 ✓  
~~Teacher~~  
Elementary School Teacher (21) SP-4 1620 ✓  
VOCATIONAL TEACHER (1) SP-8 2600 ✓  
Vocational Training Supvr. (1) 3200 ✓

INTERNAL SECURITY SECTION ✓

Chief of Internal Security CAF-11 3800  
Asst. Chief of Int. Security ✓ CAF-9 3200  
Internal Security Officer ✓ CAF-7 2600  
Secretary CAF-3 1620

WELFARE SECTION

Counselor CAF-11 3800  
Assistant Counselor (2) CAF-9 3200 ✓  
Jr. Counselor (6) CAF-7 2600  
Secretary CAF-3 1620

HEALTH SECTION

Principal Medical Officer ✓ P-6 5600 ✓  
Senior Medical Officer ✓ P-5 4600 ✓  
Medical Officer (2) ✓ P-4 3800 ✓  
Hospital Administrator ✓ CAF-9 3200 ✓  
Medical Social Worker ✓ P-2 2600 ✓  
Dietician ✓ SP-8 2600 ✓  
Sanitarian ✓ SP-8 2600 ✓  
~~Laboratory Technician~~ SP-6 2000 ✓  
X-Ray Technician ✓ SP-6 2000 ✓  
  
Chief Nurse ✓ SP-8 2600 ✓  
Assistant Chief Nurse (2) ✓ SP-7 2300 ✓  
Supervising Nurse (5) ✓ SP-6 2000 ✓  
Sr. Staff Nurse (5) ✓ SP-5 1800 ✓  
Jr. Staff Nurse ✓ SP-4 1620 ✓

COMMUNITY ACTIVITIES SECTION

Community Activities Sup'r. CAF-9 3200 ✓  
P-4 3800

COMMUNITY ANALYSIS SECTION

Community Analyst P-4 3800

BUSINESS ENTERPRISES SECTION

Business Enterprises Sup'r. CAF-11 3800

COMMUNITY GOVERNMENT SECTION

No appointive personnel

EVACUEE PROPERTY SECTION

Evacuee Property Officer CAF-11 3800



Office for Emergency Management  
War Relocation Authority  
Relocation Center  
Personnel Chart  
October 20, 1943  
(Chart #3 of 4 charts)

# MINIDOKA RELOCATION CENTER

## ADMINISTRATIVE MANAGEMENT DIVISION

Assistant Project Director CAF-13 5600

January 1, 1944  
42 positions

### SUPPLY SECTION

Supply Officer CAF-12 4600

### FINANCE SECTION

Finance Officer CAF-12 4600

### PROCUREMENT UNIT

Procurement Officer	CAF-11	3800
Asst. Procurement Officer	CAF-9	3200
Procurement Clerk	CAF-5	2000

### MESS OPERATIONS UNIT

Chief Project Steward	CAF-11	3800
Project Steward (2)	CAF-9	3200?
Storekeeper	CAF-5	2000

### BUDGET & ACCOUNTS UNIT

Fiscal Accountant ✓	CAF-11	3800
Asst. Fiscal Accountant ✓	CAF-9	3200?
Jr. Fiscal Accountant ✓	CAF-7	2600
Fiscal Accounting Clerk ✓	CAF-5	2000
Auditor ✓	CAF-9	3200?
Asst. Auditor ✓	CAF-7	2600?
Audit Clerk ✓	CAF-5	2000
<del>Agent Cashier</del>	<del>CAF-6</del>	<del>2300</del>

### COST ACCOUNTING & PROPERTY CONTROL UNIT

Cost Accountant ✓	CAF-11	3800
Asst. Cost Accountant ✓	CAF-9	3200?
Jr. Cost Accountant ✓	CAF-7	2600
Cost Accounting Clerk	CAF-5	2000

~~Property & Warehousing Officer~~ CAF-9 3200  
~~PROPERTY & WAREHOUSING OFFICER~~ CAF-9 3200-1600  
 Storekeeper ✓ CAF-7 2600  
 Asst. Storekeeper (5) ✓ CAF-5 2000  
~~Receiving & Shipping Officer~~ CAF-6 2300  
 Property Officer ✓ CAF-7 2600  
 Property Clerk ✓ CAF-5 2000

### POSTAL SERVICE UNIT

~~No appointive personnel~~

Guard CPC-2 1200

### EVACUEE PROPERTY SECTION

Evacuee Property Officer CAF-11 3800

### OFFICE SERVICES SECTION

Office Manager	CAF-5	2000
File Clerk	CAF-4	1800
Sup'r'g. Telephone Operator	CAF-3	1620
Telephone Operator (3)	CAF-2	1440

### PERSONNEL MANAGEMENT SECTION

Personnel Officer	CAF-12	4600
Asst. Personnel Officer	CAF-11	3800
Personnel Technician	CAF-9	3200
Personnel Transactions Officer	CAF-7	2600

### STATISTICS SECTION

Statistician P-3 3200



Office for Emergency Management  
War Relocation Authority  
Relocation Center  
Personnel Chart  
October 20, 1943  
(Chart #4 of 4 charts)

# MINIDOKA RELOCATION CENTER

## OPERATIONS DIVISION

Assistant Project Director

CAF-13 5600 ✓

January 1, 1944

47 positions

Center total - 206

Temporary positions - 8

Indefinite positions - 198

### ENGINEERING SECTION

Senior Engineer

P-5 4600

#### IRRIGATION, DRAINAGE & ROADS UNIT

Irrig. (or Drainage) Engr. P-4 3800 ✓  
Chief Const. Foreman CPC-10 2600 ✓  
Sr. Const. Foreman CPC-8 2200 ✓  
Stone Mason Unal.

#### CONSTRUCTION & MAINTENANCE UNIT

Const. & Maint. Supt. CAF-11 3800 ✓  
Asst. Const. Supt. (2) CAF-9 3200 ✓  
~~Electrical Engineer P-3 3200~~  
Utility Operations Supt. CPC-10 2600 ✓  
~~Foreman Mechanic CPC-8 2200~~  
Carpenter Foreman (4) CPC-8 2200 ✓  
Foreman Plumber CPC-8 2200 ✓  
Senior Plumber CPC-7 2040 ✓  
Plumber (temp) Unal. \$1.50 ph. ✓  
Carpenter (3) (temp) Unal. 1.25 ph. ✓  
Pump Operator (temp) Unal. .80 ph. ✓  
Chief Foreman Electrician CPC-10 2600 ✓

#### DESIGN & DRAFTING UNIT

~~Design Engineer P-3 3200~~

### AGRICULTURE SECTION ✓

Chief of Agriculture P-5 4600  
Farm Superintendent CAF-11 3800  
Asst. Farm Superintendent (2) CAF-9 3200  
Foreman (2) CPC-6 1860

### MOTOR TRANSPORT & MAINTENANCE SECTION

Equipment Maintenance Sup'r. CAF-9 3200 ✓  
Asst. Equip. Maint. Sup'r. CAF-7 2600 ✓  
Motor Pool Supervisor CAF-7 2600 ✓  
Foreman Mechanic (3) CPC-8 2200 ✓  
Senior Mechanic (4) CPC-7 2040 ✓  
Junior Mechanic (2) CPC-5 1680 ✓  
Dispatcher CAF-5 2000 ✓  
Dragline Operator (temp) Unal. \$1.50 ph. ✓  
Shovel Operator (temp) Unal. 1.50 ph. ✓  
Patrol Operator (temp) Unal. 1.50 ph. ✓

### INDUSTRY SECTION

Foreman

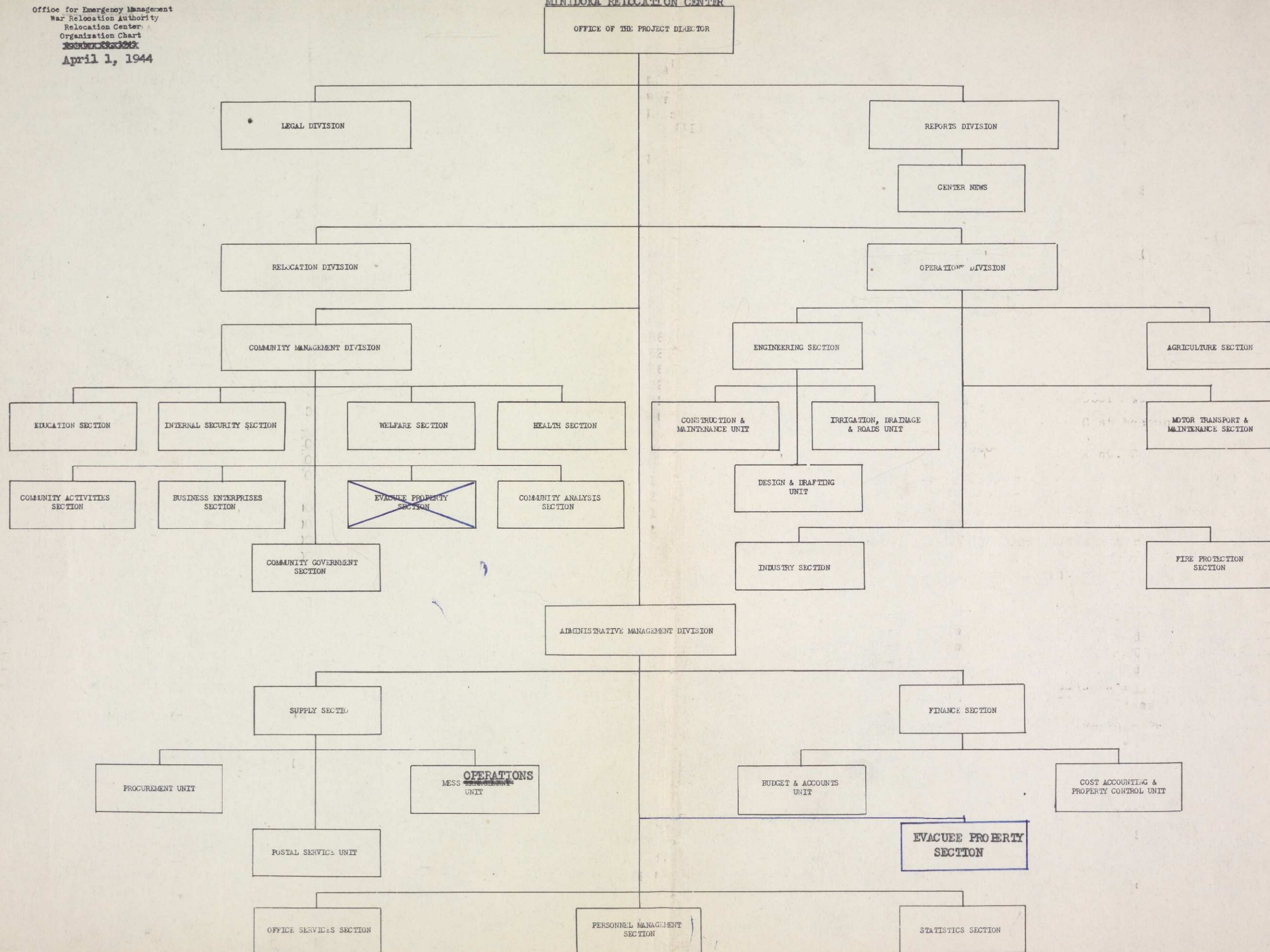
CPC-6 1860 ✓

### FIRE PROTECTION SECTION ✓

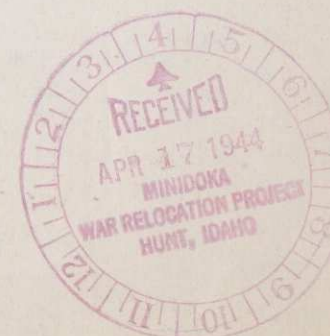
Fire Protection Officer CAF-11 3800  
Asst. Fire Protection Officer CAF-9 3200



MINIDOKA RELOCATION CENTER









# MINIDOKA RELOCATION CENTER

Office for Emergency Management  
War Relocation Authority  
Relocation Center  
Personnel Chart  
~~October 20, 1943~~  
(Chart #1 of 4 charts)  
April 1, 1944

OFFICE OF PROJECT DIRECTOR		
Project Director ✓	CAF-14	6500
Secretary ✓	CAF-5	2000

LEGAL DIVISION		
Attorney ✓	P-5	4600
Secretary ✓	CAF-4	1800

REPORTS DIVISION		
Reports Officer ✓	CAF-11	3800

RELOCATION DIVISION		
Relocation Program Officer ✓	CAF-12	4600
Asst. Relocation Program Officer ✓	CAF-11	3800
Relocation Advisor ✓	CAF-7-9	<del>2600</del> 3200
Leave Officer ✓	CAF-7	2600
Relocation Interviewer (3) ✓	CAF-7	2600

CENTER NEWS SECTION		
No appointive personnel		

COMMUNITY MANAGEMENT DIVISION		
(See page 2)		

OPERATIONS DIVISION		
(See page 4)		

ADMINISTRATIVE MANAGEMENT DIVISION		
(See page 3)		







Office for Emergency Management  
War Relocation Authority  
Relocation Center  
Personnel Chart  
~~October 20, 1943~~  
(Chart #2 of 4 charts)  
April 1, 1944

# MINIDOKA RELOCATION CENTER

## COMMUNITY MANAGEMENT DIVISION

Assistant Project Director ✓ CAF-13 5600

### EDUCATION SECTION

Superintendent of Education ✓	P-5	4600.
<del>Night School Director</del>	<del>P-6</del>	<del>5200</del>
Sup'r. of Student Teachers ✓	P-2	2600.
Jr. Sr. High School Principal ✓	P-4	3800.
Asst. Jr. Sr. High School Prin. ✓	P-3	3200.
Vocational Adviser ✓	P-2	2600.
Head Teacher (6) ✓	P-2	2600.
Secondary School Teacher (32) ✓	P-1	2000.
Librarian ✓	P-1	2000.
Elementary School Principal ✓	P-3	3200.
<del>Senior Elementary School Teacher</del>	<del>P-1</del>	<del>2000.</del>
Elementary School Teacher (21) ✓	SP-4	1620.
Vocational Teacher ✓	SP-6	2600.
Vocational Training Supervisor ✓	P-3	3200.
Adult Education Supervisor ✓	P-3	3200.

### INTERNAL SECURITY SECTION

Chief of Internal Security ✓	CAF-11	3800
Asst. Chief of Int. Security (2) ✓	CAF-9	3200
Internal Security Officer ✓	CAF-7	2600
Secretary ✓	CAF-3	1620

### WELFARE SECTION

Counselor ✓	CAF-11	3800
Assistant Counselor (2) ✓	CAF-9	3200
Jr. Counselor (3) ✓	CAF-7	2600
Secretary ✓	CAF-3	1620

### HEALTH SECTION

Principal Medical Officer ✓	P-6	5600.
Senior Medical Officer ✓	P-5	4600.
Medical Officer (2) ✓	P-4	3800.
Hospital Administrator ✓	CAF-9	3200.
Medical Social Worker ✓	P-3	3200.
Dietician ✓	SP-8	2600.
Sanitarian ✓	SP-8	2600.
<del>Laboratory Technician</del>	<del>SP-6</del>	<del>2000.</del>
X-Ray Technician ✓	SP-6	2000.
Chief Nurse ✓	SP-8	2600.
Assistant Chief Nurse (2) ✓	SP-7	2300.
Supervising Nurse (5) ✓	SP-6	2000.
Sr. Staff Nurse (5) ✓	SP-5	1800.
Jr. Staff Nurse ✓	SP-4	1620.

### COMMUNITY ACTIVITIES SECTION

Community Activities Sup'r. ✓	P-4	3800
	<del>CAF-9</del>	<del>3200.</del>

### COMMUNITY ANALYSIS SECTION

Community Analyst ✓	P-4	3800
---------------------	-----	------

### BUSINESS ENTERPRISES SECTION

Business Enterprises Sup'r. ✓	CAF-11	3800
-------------------------------	--------	------

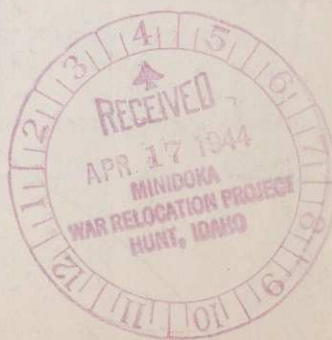
### COMMUNITY GOVERNMENT SECTION

No appointive personnel

### EVACUEE PROPERTY SECTION

Evacuee Property Officer	CAF-11	3800
--------------------------	--------	------







Office for Emergency Management  
War Relocation Authority  
Relocation Center  
Personnel Chart  
~~October 26, 1943~~  
(Chart #3 of 4 charts)  
April 1, 1944

# MINIDOKA RELOCATION CENTER

## ADMINISTRATIVE MANAGEMENT DIVISION

Assistant Project Director ✓ CAF-13 5600

### SUPPLY SECTION

Supply Officer ✓ CAF-12 4600

### FINANCE SECTION

Finance Officer ✓ CAF-12 4600

### PROCUREMENT UNIT

Procurement Officer ✓ CAF-11 3800  
Asst. Procurement Officer ✓ CAF-9 3200  
Procurement Clerk ✓ CAF-5 2000

### OPERATIONS

#### MESS MANAGEMENT UNIT

Chief Project Steward ✓ CAF-11 3800  
~~Steward~~  
Project ~~Asst.~~ Steward (2) ✓ CAF-11 3800  
CAF-9 3200  
CAF-7 2600  
Storekeeper ?

### BUDGET & ACCOUNTS UNIT

Fiscal Accountant ✓ CAF-11 3800  
Asst. Fiscal Accountant ✓ CAF-9 3200  
Jr. Fiscal Accountant ✓ CAF-7 2600  
Fiscal Accounting Clerk ✓ CAF-5 2000  
Auditer ✓ CAF-9 3200  
Asst. Auditor ✓ CAF-7 2600  
Audit Clerk ✓ CAF-5 2000  
Agent Cashier ✓ CAF-6 2300

### COST ACCOUNTING & PROPERTY CONTROL UNIT

Cost Accountant ✓ CAF-11 3800  
Asst. Cost Accountant ✓ CAF-9 3200  
Jr. Cost Accountant ✓ CAF-7 2600  
Cost Accounting Clerk ✓ CAF-5 2000  
Property & Warehousing Officer ✓ CAF-9 3200  
Storekeeper ✓ CAF-7 2600  
Asst. Storekeeper (4) ✓ CAF-5 2000  
Property Officer ✓ CAF-7 2600 3200  
Property Clerk ✓ CAF-5 2000  
Receiving & Shipping Clerk? CAF-6 2300  
*Supv.*

### POSTAL SERVICE UNIT

No appointive personnel  
Guard ✓ CFC-2 1200

### EVACUEE PROPERTY SECTION

Evacuee Property Officer ✓ CAF-11 3800

### OFFICE SERVICES SECTION

Office Manager ✓ CAF-5 2000  
File Clerk ✓ CAF-4 1800  
Sup'r'g. Telephone Operator ✓ CAF-3 1620  
Telephone Operator (3) ✓ CAF-2 1440

### PERSONNEL MANAGEMENT SECTION

Personnel Officer ✓ CAF-12 4600  
Asst. Personnel Officer ✓ CAF-11 3800  
Personnel Technician ✓ CAF-9 3200  
Personnel Transactions Officer ✓ CAF-7 2600

### STATISTICS SECTION

Statistician ✓ P-3 3200  
FATE CLERK-(2) CAF-3 1620







Office for Emergency Management  
War Relocation Authority  
Relocation Center  
Personnel Chart  
~~September 30, 1943~~  
(Chart #4 of 4 charts)  
April 1, 1944

# MINIDOKA RELOCATION CENTER

## OPERATIONS DIVISION

Assistant Project Director

CAF-13 5600

### ENGINEERING SECTION

Senior Engineer

P-5 4600

#### IRRIGATION, DRAINAGE & ROADS UNIT

Irrig. (~~or Drainage~~) Engr. P-4 3800  
Chief Const. Foreman CPC-10 2600  
Sr. Const. Foreman CPC-8 2200  
Stone Mason Unall.

#### CONSTRUCTION & MAINTENANCE UNIT

Const. & Maint. Supt. CAF-11 3800  
Asst. Const. Supt. (2) CAF-9 3200  
~~Electrical Engineer P-3 3200~~  
Utility Operations Supt. CPC-10 2600  
~~Foreman Mechanic CPC-8 2200~~  
Carpenter Foreman (4) CPC-8 2200  
Foreman Plumber CPC-8 2200  
Sr. Plumber CPC-7 2040  
Plumber N.T.E. 90 days Unall. 1.50  
Chief Foreman Electrician CPC-10 2600  
~~Carpenter (2) N.T.E. 60 days Unall. 1.25~~  
Foreman Mechanic (2) CPC-8 2200  
~~Carpenter N.T.E. 30 days Unall. 1.25 per hr.~~  
Sr. Mechanic CPC-7 2040

#### DESIGN & DRAFTING UNIT

Design Engineer

P-3 3200

### AGRICULTURE SECTION

Chief of Agriculture P-5 4600  
Farm Superintendent CAF-11 3800  
Asst. Farm Superintendent (2) CAF-9 3200  
Foreman (2) CPC-6 1860

### MOTOR TRANSPORT & MAINTENANCE SECTION

Equipment Maintenance Sup'r. CAF-9 3200  
Asst. Equip. Maint. Sup'r. CAF-7 2600  
Motor Pool Supervisor CAF-7 2600 2900  
Foreman Mechanic (3) CPC-8 2200  
Senior Mechanic (4) CPC-7 2040  
Junior Mechanic (2) CPC-5 1680  
Patrol Operator N.T.E. 90 days Unall. 1.50  
Dragline Operator N.T.E. 90 days Unall. 1.50  
Shovel Operator N.T.E. 30 days Unall. 1.50  
~~Dispatcher CAF-5 2000~~

### INDUSTRY SECTION

~~Foreman~~

~~CPC-6 1860~~

### FIRE PROTECTION SECTION

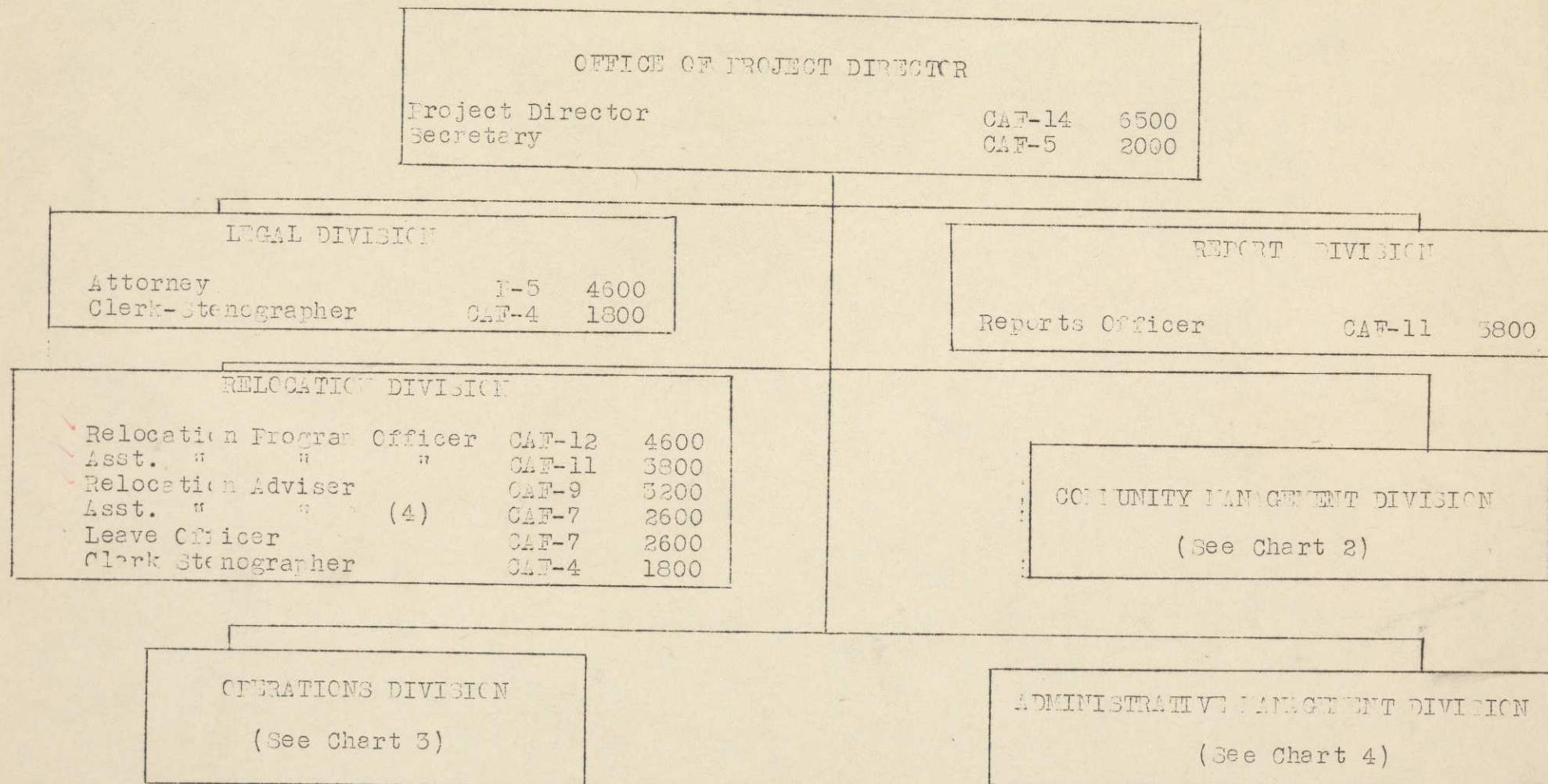
Fire Protection Officer CAF-11 3800  
Asst. Fire Protection Officer CAF-9 3200







# MINIDOKA RELOCATION CENTER



OCT. 6, 1944

CHART I



MINIDOKA RELOCATION  
CENTER

COMMUNITY MANAGEMENT DIVISION

Assistant Project Director

CAF-13 5600

Oct. 6, 1944

EDUCATION SECTION

Superintendent Of Education	P-5	4600
Adult Education Supervisor	P-3	3200
Supvr. Of Student Teacher	P-2	2600
Librarian	P-1	2000
High School Principal	P-4	3800
Asst. " " "	P-3	3200
Guidance Counselor	P-2	2600
Head Teacher (6)	P-2	2600
Secondary School Teacher (27)	P-1	2000
Elementary School Principal	P-3	3200
Sr. School (Elementary) Teacher ( 7 )	P-1	2000
Elementary School Teacher(13)	SP-4	1620
Vocational Training Supvr.	P-3	3200
Vocational Teacher	SP-8	2600

INTERNAL SECURITY SEC.

Chief of I.S.....	CAF-11	3800
Asst. " " ".....	CAF-9	3200
Internal Sec. Officer..	CAF-7	2600
Clerk-Stenographer....	CAF-3	1620

HEALTH SECTION

Principal Medical Officer	P-6	5600
Senior Medical Officer(2)	P-5	4600
Hospital Administrator	CAF-9	3200
Medical Social Worker	P-3	3200
Dietician	SP-8	2600
Sanitarian	SP-8	2600
Laboratory Technician	SP-6	2000
X-Ray Technician	SP-6	2000
Chief Nurse	SP-8	2600
Asst. " " (2)	SP-7	2300
Supervising Nurse(6)	SP-6	2000
Sr. Staff Nurse (3)	SP-5	1800

WELFARE SECTION

Counselor	P-4	3800
Asst. Counselor(2)	P-3	3200
Jr. Counselor(6)	P-2	2600
Clerk-Steno	CAF-3	1620

COMMUNITY ACTIVITIES SECTION

Community Activities Supervisor	P-4	3800
---------------------------------	-----	------

COMMUNITY ANALYSIS SECTION

Community Analyst	P-4	3800
-------------------	-----	------

BUSINESS ENTERPRISES SECTION

No Personnel Paid By WRA

COMMUNITY GOVERNMENT SECTION

No Appointive Personnel

CHART 2



# CHART 3

## OPERATION DIVISION

Assistant Project Director	CAF-13	5600
Secretary	CAF-4	1800

## ENGINEERING SECTION

Senior Engineer	P-5	4600
Office Engineer	P-3	3200
Operation Analyst	CAF-5	2000

## AGRICULTURE SECTION

Chief Of Agriculture	P-5	4600
Farm Superintendent	CAF-11	3800
Asst. Farm Superintendent	(2) CAF-9	3200
Foreman	CAF-8	2300
Foreman	(2) CPC-6	1360

## IRRIGATION, DRAINAGE & ROADS UNIT

*Supr*  
~~Irr. Engineer~~ **CAF-9 - 3200**  
 Chief Foreman  
 Construction CPC-10 2600  
 Sr. Foreman " (2) CPC-8 2200

## CONSTRUCTION & MAINTENANCE UNIT

Const. & Maint. Supt.	CAF-11	3800
Asst. Const. Supt.	CAF-9	3200
Utility Operations Supt.	CPC-10	2600
Chief Foreman Const.	CPC-10	2600
Foreman Refrigeration	CPC-10	2600
" Electrician	CPC-10	2600
" Maintenance	CPC-9	2300
" Carpenter (2)	CPC-8	2200
" Plumber	CPC-8	2200
" Mechanic (2)	CPC-8	2200
" Pump Operator	CPC-8	2200
" Construction	CPC-8	2200

## Motor Transport & Maintenance SECTION

Equipment Maintenance Supvr.		
Asst. " " "	CAF-11	3800
Asst. " " "	CAF-9	3200
Motor Pool Supvr.	CAF-9	3200
Sr. Foreman Mechanic (2)		
	CPC-9	2300
Foreman Blacksmith	CPC-9	2300
" Mechanic	CPC-10	2600
Mechanic	CPC-7	2040
Heavy Duty Truck Driver		
	CPC-5	1680
Foreman Mechanic (2)		
	CPC-8	2200

## INDUSTRY SECTION

## FIRE PROTECTION SECTION

Fire protection Officer	CAF-11	3800
Asst. " " "	CAF-9	3200

MINIDOKA RELOCATION CENTER

OCT. 6, 1944



MINIDOKA RELOCATION  
CENTER

ADMINISTRATIVE MANAGEMENT  
DIVISION

Oct. 6, 1944

Asst. Project Director	CAF-13	5600
Secretary	CAF-4	1800

SUPPLY SECTION

Supply Officer	CAF-12	4600
----------------	--------	------

Procurement Unit

Procurement Officer	CAF-11	3800
Asst. " "	CAF-9	3200
Procurement Clerk	CAF-5	2000

POSTAL SERVICE UNIT

Guard	CPC-2	1200
-------	-------	------

COST ACCOUNTING UNIT

Cost Accountant	CAF-11	3800
Asst. " "	CAF-9	3200
Jr. " "	CAF-7	2600
Cost Accounting Clerk	CAF-5	2000

MESS OPERATION SECTION

Chief Project Steward	CAF-11	3800
Project Steward (2)	CAF-9	3200
Storekeeper	Caf-7	2600

STATISTICS SECTION

STATISTICIAN	P-3	3200
Gate Clerk (3)	CAF-3	1620

Personnel Management Section

Personnel Officer	CAF-12	4600
Asst. " "	CAF-11	3800
Personnel Technician	CAF-9	3200
Personnel Transactions Officer	CAF-7	2600
Personnel Clerk	CAF-4	1800

FINANCE SECTION

Finance Officer	CAF-12	4600
-----------------	--------	------

PROPERTY CONTROL & WAREHOUSE  
UNIT

Prop. & Warehouse Officer	CAF-9	3200
Storekeeper	CAF-7	2600
Asst. " (5)	CAF-5	2000
Property Officer	CAF-7	2600
Property Clerk	CAF-5	2000
Receiving & Shipping Clerk	CAF-6	2300

BUDGET & ACCOUNTS UNIT

Fiscal Accountant	CAF-11	3800
Asst. " "	CAF-9	3200
Fiscal (Jr.) Accountant	CAF-7	2600
Fiscal Accountant Clerk	CAF-5	2000
Auditor	CAF-9	3200
Asst. "	CAF-7	2600
Audit Clerk	CAF-5	2000
Agent Cashier	CAF-6	2300

EVACUEE PROPERTY SECTION

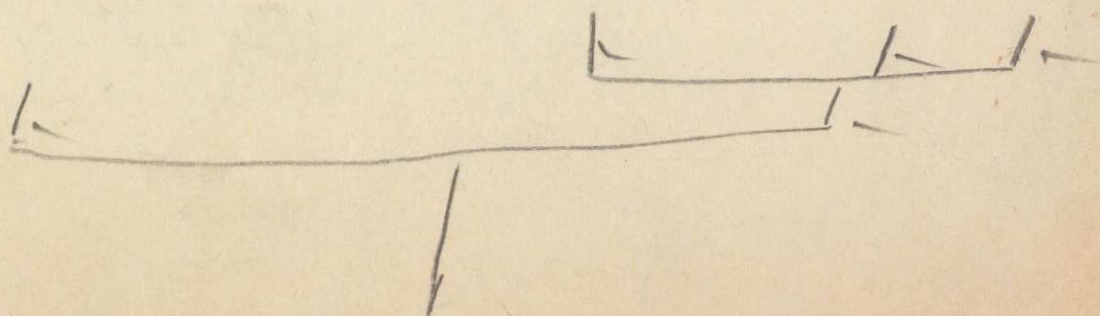
Evacuee Property Officer	CAF-11	3800
--------------------------	--------	------

OFFICE SERVICE SECTION

Office Manager	CAF-5	2000
File Clerk	CAF-4	1800
Supervising Telephone Operator	CAF-3	1620
Telephone Operator (2)	CAF-2	1440

CHART 4







Dw. Reher

DIVISIONS, SECTIONS AND UNITS  
ON THE MINIDOKA PROJECT

OFFICE OF THE PROJECT DIRECTOR

LEGAL DIVISION

REPORTS DIVISION

Center News (no appointed personnel)

RELOCATION DIVISION

OPERATIONS DIVISION

Engineering Section

Construction & Maintenance Unit

Irrigation, Drainage & Roads Unit

Design & Drafting

Agriculture Section

Industry Section

Motor Transport & Maintenance Section

Fire Protection Section

COMMUNITY MANAGEMENT DIVISION

Education Section

Internal Security Section

Welfare Section

Health Section

Community Activities Section

Business Enterprises Section

Community Analysis Section

Community Government Section

ADMINISTRATIVE MANAGEMENT DIVISION

Supply Section

Procurement Unit

Mess Operations Unit

Postal Services Unit

Finance Section

Budget & Accounts Unit

Cost Accounting & Property Control Unit

Evacuee Property Section

Office Services Section

Personnel Management Section

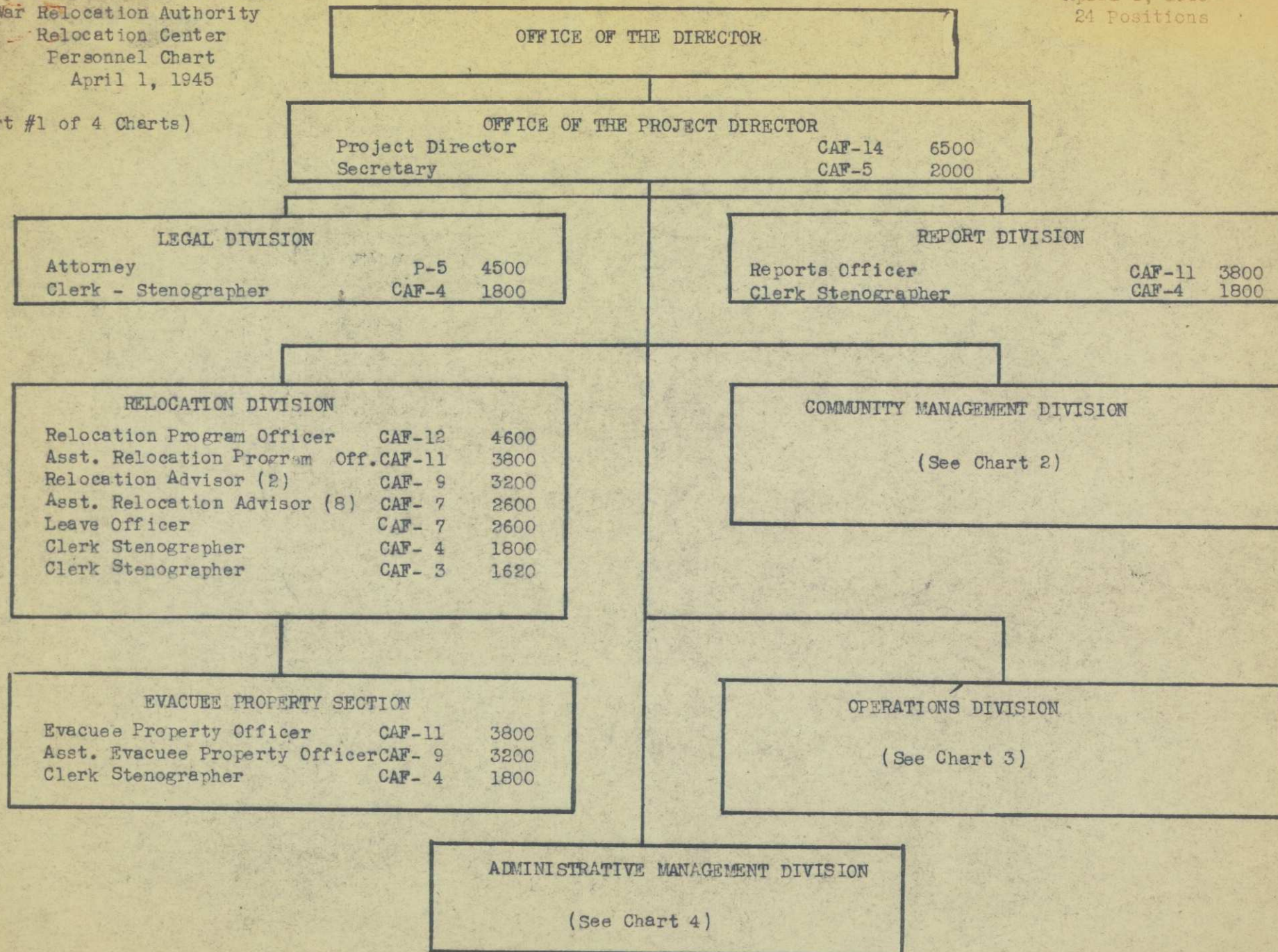
Statistics Section



MINIDOKA RELOCATION CENTER

April 1, 1945  
24 Positions

(Chart #1 of 4 Charts)





Dept. of the Interior  
War Relocation Authority  
Relocation Center  
Personnel Chart  
April 1, 1945

# MINIDOKA RELOCATION CENTER

April 1, 1945  
96 Positions

## COMMUNITY MANAGEMENT DIVISION

Assistant Project Director CAF-13 5600

(Chart 2 of 4 charts)

### EDUCATION SECTION

Superintendent of Educ.	P-5	4600
Supvr. of Student Teachers	P-2	2600
Librarian	P-1	2000
High School Principal	P-4	3800
Guidance Counselor	P-2	2600
Head Teacher (5)	P-2	2600
Secondary Schl. Teacher (24)	P-1	2000
Elementary School Prin.	P-3	3200
Sr. Elem. Schl. Teacher (7)	P-1	2000
Elem. School Teacher (10)	SP-4	1620
Adult & Vocational Education Supervisor	P-3	3200

### HEALTH SECTION

Principal Medical Officer	P-6	5600
Senior Medical Officer (2)	P-5	4600
Hospital Administrator	CAF-9	3200
Medical Social Worker	P-3	3200
Dietician	SP-8	2600
Sanitarian	SP-8	2600
Superv. Medical Technician	SP-7	2300
Chief Nurse	SP-8	2600
Ass't Chief Nurse (2)	SP-7	2300
Supervising Nurse (6)	SP-6	2000
Senior Staff Nurse	SP-5	1800

### INTERNAL SECURITY SECTION

Chief of Internal Sec'ty	CAF-11	3800
Asst. Chief Int. Sec. (2)	CAF-9	3200
Internal Security Officer	CAF-7	2600
Guard (6)	CPC-5	1680
Clerk Stenographer	CAF-3	1620

### WELFARE SECTION

Counselor	P-4	3800
Ass't Counselor (2)	P-3	3200
Junior Counselor (5)	P-2	2600
Counseling Aide	SP-6	2000
Clerk Stenographer	CAF-4	1800
Clerk Typist	CAF-3	1620

### COMMUNITY ACTIVITIES SECTION

Comm. Act. Super. P-4 3800

### BUSINESS ENTERPRISE SECTION

No appointed personnel

### COMMUNITY ANALYSIS SECTION

Comm. Analyst P-4 3800

### COMMUNITY GOVERNMENT SECTION

No appointed personnel



MINIDOKA RELOCATION CENTER

April 1, 1945  
39 Positions

(Chart #3 or 4 charts)

OPERATIONS DIVISION

Asst. Project Director	CAF-13	5600
Secretary	CAF- 4	1800

ENGINEERING SECTION

Senior Engineer	P-5	4600
Office Engineer	P-3	3200

AGRICULTURE SECTION

Farm Superintendent	CAF-11	3800
Asst. Farm Superintendent (2)	CAF- 9	3200
Foreman	CPC- 8	2200
Foreman	CPC- 6	1860

CONSTRUCTION & MAINTENANCE UNIT

Const. & Maint. Supt.	CAF-11	3800
Asst. Const. Supt.	CAF- 9	3200
Utility Operations Supt.	CPC-10	2600
Chief Foreman Construction	CPC-10	2600
Foreman Refrigeration	CPC-10	2600
Foreman Electrician	CPC-10	2600
Foreman Maintenance	CPC- 9	2300
Foreman Carpenter (2)	CPC- 8	2200
Foreman Plumber	CPC- 8	2200
Foreman Mechanic (2)	CPC- 8	2200
Foreman Pump Operator	CPC- 8	2200
Foreman Construction	CPC- 8	2200

IRRIGATION, DRAINAGE & ROADS UNIT

Irri. Drainage & Roads Supt.	CAF-9	3200
Chief Foreman Construction	CAF-10	2600
Sr. Foreman Construction (2)	CPC-8	2200

MOTOR TRANSPORT AND MAINTENANCE SECTION

Equipment Maintenance Super.	CAF-11	3800
Asst. Equip. Maint. Super.	CAF- 9	3200
Motor Pool Supervisor	CAF- 9	3200
Sr. Foreman Mechanic (2)	CPC- 9	2300
Foreman Blacksmith	CPC- 9	2300
Foreman Mechanic (2)	CPC-88	2200
Mechanic	CPC- 7	2040
Heavy Duty Truck Driver	CPC- 5	1680
Foreman Mechanic	CPC-10	2600

INDUSTRY SECTION

FIRE PROTECTION SECTION

Fire Protection Officer	CAF-11	3800
Asst. Fire Protection Officer	CAF- 9	3200



MINIDOKA RELOCATION CENTER

April 1, 1945  
58 positions

(Chart #4 of 4 charts)

ADMINISTRATIVE MANAGEMENT DIVISION

Assistant Project Director CAF-13 5600  
Secretary CAF- 4 1800

SUPPLY SECTION

Supply Officer CAF-12 4600  
Clerk Stenographer CAF- ~~B~~ 1620  
*4 1800*

FINANCE SECTION

Finance Officer CAF-12 4600  
Ass't Finance Officer CAF-11 3800  
Clerk Stenographer CAF- 3 1620

PROCUREMENT UNIT

Proc. Officer CAF-11 3800  
Asst. Proc. Officer CAF-9 3200

PROPERTY CONTROL & WAREHOUSING UNIT

Prop. & Whsing Officer CAF-11 3800  
Asst. Prop & Whsing Officer CAF- 9 3200  
Storekeeper CAF- 7 2600  
Asst. Storekeeper (5) CAF- 5 2000  
Prop. Officer CAF- 7 2600  
Prop. Clerk (2)(3) CAF- 5 2000  
Receiving & Shipping Super. CAF-6 2300

EXPENDITURE ANALYSIS UNIT

*COST Acct. CAF-11 - 3800*  
Cost Accountant CAF-7 2600  
Cost Accounting Clerk CAF-5 2000  
Clerk Typist CAF-3 1620

EXAMINATION UNIT

Auditor CAF-9 3200  
Asst. Auditor CAF-7 2600  
Clerk Typist (2) CAF-3 1620

POSTAL SERVICE UNIT

Guard CPC-2 1200

ACCOUNTS UNIT

Fiscal Accountant CAF-9 3200  
Fiscal Accountant CAF-7 2600  
Fiscal Accounting Clerk(2) CAF-5 2000  
Clerk Typist CAF-3 1620  
Agent Cashier CAF-6 2300

STATISTICS SECTION

Statistician P-3 3200  
Asst. Stat. P-2 2600  
Stat. Clerk (2) CAF-5 2000  
Gate Clerk (4) CAF-3 1620  
Sr. Gate Clerk CAF-5 2000

PERSONNEL MANAGEMENT SEC.

Personnel Offi. CAF-12 4600  
Asst. Per. Offr. CAF-11 3800  
Per. Trans. Off. CAF- 7 2600  
Personnel CAF- 4 1800  
Clerk

MESS OPERATIONS SECTION

Chief Proj. Stwd CAF-11 3800  
Proj. Steward CAF-9 3200  
Storekeeper CAF-7 2600  
Account. Clerk CAF-5 2000

OFFICE SERVICES SECTION

Office Mgr. CAF-5 2000  
File Clerk CAF-4 1800  
Spv. Tel. Opr. CAF-3 1620  
Tel. Opr. (3) CAF-2 1440



Department of the Interior  
War Relocation Authority  
Relocation Center  
Personnel Chart  
April 1, 1945

(Chart #1 of 4 charts)

MINIDOKA RELOCATION CENTER  
*PROJECT*  
OFFICE OF THE DIRECTOR

July 1, 1945

27 positions

OFFICE OF THE PROJECT DIRECTOR

Project Director	CAP-14	6500
Secretary	CAP-5	2000

LEGAL DIVISION

Attorney	P-6	4600
Clerk Stenographer	CAP-4	1900

REPORTS DIVISION

Reports Officer	CAP-11	3800
Clerk Stenographer	CAP-4	1800
TRANSLATOR	CAP-7	2250

RELOCATION DIVISION

Relocation Program Officer	CAP-12	4600
Asst. Relocation Program Officer	CAP-11	3800
Relocation Advisor (2)	CAP-9	3200
Asst. Relocation Advisor (5)	CAP-7	2000
Leave Officer	CAP-7	2000
Clerk Stenographer	CAP-4	1800
Clerk Stenographer	CAP-3	1620

CLERKSHIP MANAGEMENT DIVISION

(See Chart 2)

OPERATIONS DIVISION

(See Chart 3)

EVACUEE PROPERTY SECTION

Evacuee Property Officer	CAP-11	3600
Asst. Evacuee Property Officer	CAP-9	3200
Clerk Stenographer	CAP-4	1800
Evacuee Property Clerk (2)	CAP-5	2000

ADMINISTRATIVE MANAGEMENT DIVISION

(See Chart 4)



Department of the Interior  
 War Relocation Authority  
 Relocation Center  
 Personnel Chart  
 April 1, 1945  
 (Chart #2 of 4 charts)

MINIDOKA RELATION CENTER

COMMUNITY MANAGEMENT DIVISION		
Assistant Project Director	CAP-13	5600
Secretary	CAP-4	1800

82 positions

EDUCATION SECTION

Superintendent of Education	P-5	4600
Librarian	P-1	2000
High School Principal	P-4	3600
Guidance Counselor	P-2	2600
Head Teacher (5)	P-2	2300
Secondary School Teacher (17)	P-1	2000
Elementary School Principal	P-3	3200
Sr. Elementary Sch. Teacher (5)	P-1	2000
Elementary School Teacher (9)	SP-4	1620
Adult & Vocational Education Supervisor	P-3	3200
Clerk Stenographer	CAP-4	1800
Clerk Typist	CAP-3	1620

HEALTH SECTION

Principal Medical Officer	P-6	5600
Senior Medical Officer	P-5	4600
Medical Officer	P-4	3600
Hospital Administrator	CAP-5	3200
Medical Social Worker	P-3	3200
Dietician	SP-8	2600
Sanitarian	SP-8	2600
Supervising Medical Technician	SP-7	2300
Chief Nurse	SP-6	2600
Assistant Chief Nurse	SP-7	2300
Supervising Nurse (2)	SP-6	2000
Senior Staff Nurse (6)	SP-5	1800
Clerk Stenographer	CAP-4	1800

INTERNAL SECURITY SECTION

Chief of Int. Sec.	CAP-11	3600
Asst. Chief of Int. Sec.	CAP-9 (2)	3200
Internal Sec. Officer	CAP-7	2800
Guard (6)	CPC-6	1680
Clerk Stenographer	CAP-3	1620

WELFARE SECTION

Counselor	P-4	3600
Asst. Counselor (3)	P-3	3200
Jr. Counselor (3)	P-2	2600
Counseling Aide (2)	SP-6	2000
Clerk Stenographer	CAP-4	1800
Clerk Typist	CAP-3	1620

COMMUNITY ACTIVITIES SECTION

Comm. Act. Supvr.	P-4	3600
-------------------	-----	------

COMMUNITY ANALYSIS SECTION

Community Analyst	P-4	3600
-------------------	-----	------

BUSINESS ENTERPRISES SECTION

No Appointed Personnel

COMMUNITY GOVERNMENT SECTION

No Appointed Personnel



Department of the Interior  
War Relocation Authority  
Relocation Center  
Personnel Chart  
April 1, 1945

(Chart #3 or 4 charts)

MINILOKA RELOCATION CENTER

OPERATIONS DIVISION

39 positions

Assistant Project Director	CAF-13	5600
Secretary	CAF-4	1800

ENGINEERING SECTION

Senior Engineer	P-5	4600
Office Engineer	P-3	3200

AGRICULTURE SECTION

Farm Superintendent	CAF-11	3800
Asst. Farm Superintendent	CAF-9	3200
Foreman	CPC-8	2200
Foreman	CPC-6	1860

CONSTRUCTION & MAINTENANCE UNIT

Const. & Maint. Supt.	CAF-11	3800
Asst. Const. Supt.	CAF-9	3200
Utility Operations Supt.	CPC-10	2600
Chief Foreman Construction	CPC-10	2600
Foreman Refrigeration	CPC-10	2600
Foreman Electrician	CPC-10	2600
Foreman Maintenance	CPC-9	2300
Foreman Carpenter (2)	CPC-8	2200
Foreman Plumber	CPC-8	2200
Foreman Mechanic (2)	CPC-8	2200
Foreman Pump Operator	CPC-6	2200

MOTOR TRANSPORT AND MAINTENANCE SECTION

Eqpt. Maintenance Supervisor	CAF-11	3800
Asst. Equip. Maint. Supervisor	CAF-9	3200
Motor Pool Supervisor	CAF-9	3200
Sr. Foreman Mechanic (2)	CPC-9	2300
Foreman Blacksmith	CPC-9	2300
Foreman Mechanic (2)	CPC-8	2200
Mechanic	CPC-7	2040
Heavy Duty Truck Driver	CPC-5	1680
Chief Foreman Mechanic	CPC-10	2600
Clerk Typist	CAF-3	1620

IRRIGATION, DRAINAGE & ROADS UNIT

Irr., Drainage & Rds. Supt.	CAF-9	3200
Chief Foreman Construction	CPC-10	2600
Sr. Foreman Construction (2)	CPC-8	2200

FIRE PROTECTION SECTION

Fire Protection Officer	CAF-11	3800
Asst. Fire Protection Officer	CAF-9	3200



Department of the Interior  
 War Relocation Authority  
 Relocation Center  
 Personnel Chart  
 April 1, 1945  
 Revised  
 (Chart #4 of 4 charts)

MINILOKA RELOCATION CENTER

76 positions

ADMINISTRATIVE MANAGEMENT DIVISION

Assistant Project Director	CAP-13	5600
Secretary	CAP-4	1800

SUPPLY SECTION

Supply Officer	CAP-12	4000
Clerk Stenographer	CAP-4	1800

FINANCE SECTION

Finance Officer	CAP-12	4500
Asst. Finance Off. (2)	CAP-11	3800
Clerk Stenographer	CAP-3	1620

PROCUREMENT UNIT

Procurement Off.	CAP-11	3800
Asst. Proc. Officer	CAP-9	3200

PROPERTY CONTROL & WAREHOUSING UNIT

Prop. & Wase. Officer	CAP-11	3800
Asst. Prop. & Wase. Off.	CAP-9	3200
Storekeeper	CAP-7	2600
Asst. Storekeeper (5)	CAP-6	2000
Property Officer	CAP-7	2600
Property Clerk (6)	CAP-5	2000
Reev. & Shipping Supvr.	CAP-5	2300

EXPENDITURE ANALYSIS UNIT

Fiscal Accountant	CAP-9	3200
Fiscal Asst. Clerk (2)	CAP-6	2000
Clerk Typist	CAP-3	1620

POSTAL SERVICE UNIT

Guard	CPC-2	1200
-------	-------	------

EXAMINATION UNIT

Fiscal Asst.	CAP-9	3200
Asst. Fiscal Asst.	CAP-7	2600
Audit Clerk (2)	CAP-5	2000
Clerk Typist (2)	CAP-3	1620
Clerk Steno	CAP-3	1620

ACCOUNTS UNIT

Fiscal Asst.	CAP-9	3200
Asst. Fiscal Asst.	CAP-7	2600
Fiscal Asst. Clerk 2	CAP-6	2000
Clerk Typist	CAP-3	1620
Agent Cashier	CAP-6	2300

STATISTICS SECTION

Statistician	P-3	3200
Asst. Stat.	P-2	2600
Stat. Clerk (2)	CAP-5	2000
Date Clerk (4)	CAP-3	1620
Sr. Date Clerk	CAP-5	2000

PERSONNEL MANAGEMENT SECTION

Personnel Officer	CAP-12	4500
Personnel Insp. Off.	CAP-7	2800
Personnel Clerk	CAP-4	1800
Clerk Typist (10)	CAP-3	1620

MESS OPERATIONS SECTION

Chief Proj. Steward	CAP-11	3800
Proj. Steward	CAP-9	3200
Storekeeper	CAP-7	2600
Asst. Clerk	CAP-6	2000
Clerk Stenographer	CAP-4	1800
Clerk Stenographer	CAP-3	1620

OFFICE SERVICES SECTION

Office Mgr.	CAP-8	2000
File Clerk	CAP-4	1800
Supv. Tel. Opr.	CAP-3	1620
Telephone Opr.	CAP-2	1440
(3)		



Department of the Interior  
War Relocation Authority  
Relocation Center  
Personnel Chart  
April 1, 1945

(Chart #1 of 4 charts)

MINIDOKA RELOCATION CENTER

*PROTECT*  
OFFICE OF THE DIRECTOR

July 18, 1945  
31 positions

OFFICE OF THE PROJECT DIRECTOR

Project Director	CAF-14	7175
Secretary	CAF-5	2320

LEGAL DIVISION

Attorney	P-5	5180
Clerk Stenographer	CAF-4	2100

REPORTS DIVISION

Reports Officer	CAF-11	4300
Clerk Stenographer	CAF-4	2180
Translator	CAF-7	2980

RELOCATION DIVISION

Relocation Program Officer	CAF-12	5180
Asst. Relocation Program Officer	CAF-11	4300
Relocation Adviser (2)	CAF-9	3640
Asst. Relocation Adviser (12)	CAF-7	2980
(Jr. Asst. Relocation Adviser(4)	CAF-6	2320)
Leave Officer	CAF-7	2980
Clerk Stenographer	CAF-4	2100
Clerk Stenographer	CAF-3	1902

COMMUNITY MANAGEMENT DIVISION

(See Chart 2)

OPERATIONS DIVISION

(See Chart 3)

EVACUEE PROPERTY SECTION

Evacuee Property Officer	CAF-11	4300
Asst. Evacuee Property Officer	CAF-9	3640
Clerk Stenographer	CAF-4	2100
Evacuee Property Clerk (2)	CAF-5	2320

ADMINISTRATIVE MANAGEMENT DIVISION

(See Chart 4)



Department of the Interior  
War Relocation Authority  
Relocation Center  
Personnel Chart  
April 1, 1945

MINIDOKA RELOCATION CENTER

COMMUNITY MANAGEMENT DIVISION		
Assistant Project Director	CAF-13	6230
Secretary	CAF-4	2100

89 positions

(Chart #2 of 4 Charts)

EDUCATION SECTION

Superintendent of Education	P-5	5180
Librarian	P-1	2320
High School Principal	P-4	4300
Guidance Counselor	P-2	2980
Head Teacher (5)	P-2	2980
Secondary School Teacher (17)	P-1	2320
Elementary School Principal	P-3	3640
Sr. Elementary Sch. Teacher (6)	P-1	2320
Elementary School Teacher (9)	SP-4	1902
Adult & Vocational Education Supervisor	P-5	3640
Clerk Stenographer	CAF-4	2100
Clerk Typist	CAF-3	1902

HEALTH SECTION

Principal Medical Officer	P-6	6230
Senior Medical Officer	P-5	5150
Medical Officer	P-4	4300
Hospital Administrator	CAF-9	5640
Medical Social Worker	P-3	3640
Dietician	SP-8	2980
Sanitarian	SP-8	2980
Supervising Medical Technician	SP-7	2650
Chief Nurse	SP-8	2980
Assistant Chief Nurse	SP-7	2650
Supervising Nurse (2)	SP-6	2320
Senior Staff Nurse (6)	SP-5	2100
Clerk Stenographer	CAF-4	2100

INTERNAL SECURITY SECTION

Chief of Int. Sec.	CAF-11	4300
Asst. Chief of Int. Sec.	CAF-9(2)	3640
Internal Security Officer	CAF-7	2980
Guard (6)	CPC-5	1968
Clerk Stenographer	CAF-3	1902

WELFARE SECTION

Counselor	P-4	4300
Assistant Couns.	P-3(3)	3640
Junior Counselor	P-2(4)	2980
Counseling Aide	SP-6	2320
Clerk Stenographer	CAF-4	2100
Clerk Typist	CAF-3	1902

COMMUNITY ACTIVITIES SECTION

Comm. Act. Supvr.	P-4	4300
-------------------	-----	------

COMMUNITY ANALYSIS SECTION

Community Analyst	P-4	4300
-------------------	-----	------

BUSINESS ENTERPRISES SECTION

No Appointed Personnel

COMMUNITY GOVERNMENT SECTION

No Appointed Personnel



Department of the Interior  
War Relocation Authority  
Relocation Center  
Personnel Chart  
April 1, 1945

(Chart #3 of 4 Charts)

MAILOKA RELOCATION CENTER

OPERATIONS DIVISION

39 positions

Assistant Project Director	CAP-13	6230
Secretary	CAP-4	2100

ENGINEERING SECTION

Senior Engineer	P-5	5180
Office Engineer	P-3	3640

AGRICULTURE SECTION

Farm Superintendent	CAP-11	4300
Asst. Farm Superintendent	CAP-9	3640
Foreman	CPC-8	2540
Foreman	CPC-6	2166

CONSTRUCTION & MAINTENANCE UNIT

Const. & Maint. Supt.	CAP-11	4300
Asst. Const. Supt.	CAP-9	3640
Utility Operations Supt.	CPC-10	2980
Chief Foreman Construction	CPC-10	2980
Foreman Refrigeration	CPC-10	2980
Foreman Electrician	CPC-10	2980
Foreman Maintenance	CPC-9	2650
Foreman Carpenter (2)	CPC-8	2540
Foreman Plumber	CPC-8	2540
Foreman Mechanic (2)	CPC-8	2540
Foreman Pump Operator	CPC-8	2540

MOTOR TRANSPORT AND MAINTENANCE SECTION

Equip. Maintenance Supervisor	CAP-11	4300
Asst. Equip. Maint. Supervisor	CAP-9	3640
Motor Pool Supervisor	CAP-9	3640
Sr. Foreman Mechanic (2)	CPC-9	2650
Foreman Blacksmith	CPC-9	2650
Foreman Mechanic (2)	CPC-8	2540
Mechanic	CPC-7	2364
Heavy Duty Truck Driver	CPC-5	1858
Chief Foreman Mechanic	CPC-10	2980
Clerk Typist	CAP-3	1902

IRRIGATION, DRAINAGE & ROADS UNIT

Irr., Drainage & Rds. Supt.	CAP-9	3640
Chief Foreman Construction	CPC-10	2980
Sr. Foreman Construction (2)	CPC-8	2540

FIRE PROTECTION SECTION

Fire Protection Officer	CAP-11	4300
Asst. Fire Protection Officer	CAP-9	3640



Department of the Interior  
War Relocation Authority  
Relocation Center  
Personnel Chart  
April 1, 1945  
Revised  
(Chart #4 of 4 charts)

MINIDOKA RELOCATION CENTER

ADMINISTRATIVE MANAGEMENT DIVISION

76 positions

Assistant Project Director	CAP-13	6230
Secretary	CAP-4	2100

SUPPLY SECTION

Supply Officer	CAP-12	5180
Clerk Stenographer	CAP-4	2100

FINANCE SECTION

Finance Officer	CAP-12	5180
Asst. Finance Off.	2 CAP-11	4300
Clerk Stenographer	CAP-3	1902

PROCUREMENT UNIT

Procurement Off.	CAP-11	4300
Asst. Proc. Officer	CAP-8	3640

PROPERTY CONTROL & WAREHOUSING UNIT

Prop. & Wase. Officer	CAP-11	4300
Asst. Prop. & Wase. Off.	CAP-9	3640
Storekeeper	CAP-7	2980
Asst. Storekeeper (5)	CAP-5	2320
Property Officer	CAP-7	2980
Property Clerk (5)	CAP-5	2320
Recv. & Shipping Super.	CAP-6	2650

EXPENDITURE ANALYSIS UNIT

Fiscal Accountant	CAP-9	3640
Fiscal Acct. Clerk (1)	CAP-5	2320
Clerk Typist	CAP-3	1902

POSTAL SERVICE UNIT

Guard	CPC-2	1440
-------	-------	------

EXAMINATION UNIT

Fiscal Acct.	CAP-9	3640
Asst. Fiscal Accountant	CAP-7	2980
Audit Clerk (2)	CAP-5	2320
Clerk Typist (2)	CAP-3	1902
Clerk Steno	CAP-3	1902

ACCOUNTS UNIT

Fiscal Acct.	CAP-9	3640
Asst. Fiscal Acct.	CAP-7	2980
Fiscal Acct. Clerk 2	CAP-5	2320
Clerk Typist	CAP-3	1902
Agent Cashier	CAP-6	2650

STATISTICS SECTION

Statistician	P-3	3640
Asst. Statistician	P-2	2980
Statistical Clerk (3)	CAP-5	2320
Cate Clerk (4)	CAP-3	1902
Senior Cate Clerk	CAP-5	2320

MESS OPERATIONS SECTION

Chief Proj. Steward	CAP-11	4300
Proj. Steward	CAP-9	3640
Storekeeper	CAP-7	2980
Accounting Clerk	CAP-5	2320
Clerk Stenographer	CAP-4	2100
Clerk Stenographer	CAP-3	1902

OFFICE SERVICES SECTION

Office Mgr.	CAP-6	2320
File Clerk	CAP-4	2100
Super. Tele. Opr.	CAP-3	1902
Telephone Operat.	CAP-2	1704
(3)		

PERSONNEL MANAGEMENT SECTION

Personnel Officer	CAP-12	5180
Personnel Trans. Off.	CAP-7	2980
Personnel Clerk	CAP-4	2100
Clerk Typist (10)	CAP-3	1902



WAR RELOCATION AUTHORITY  
Minideka Project

August 14, 1942

ORGANIZATION LIST

Administrative Division

Position		:Grade :	Incumbent		:E. O. C. :
			Considered	Selected	
Sr. Admin. Officer	W	:CAF 12 : :\$4600 :	:	:	:
Clerk-Stenographer	WJ	:CAF 4 : :\$1800 :	:	:	:

Budget and Finance Section:

Prin. Fiscal Acct.	W	:CAF 11 : :\$3800 :	:	:	:
Asst. Clerk-Steno.	WJ	:CAF 3 : :\$1620 :	:	:	:

Audit Unit:

Fiscal Accountant	W	:CAF 9 : :\$3200 :	:	:	:
Jr. Fiscal Accountant	WJ	:CAF 7 : :\$2600 :	:	:	:
Sr. Audit Clerk	WJ	:CAF 5 : :\$2000 :	:	:	:
Audit Clerk	WJ	:CAF 4 : :\$1800 :	:	:	:
Audit Clerk	WJ	:CAF 4 : :\$1800 :	:	:	:
Asst. Audit Clerk	J	:CAF 3 : :\$1620 :	:	:	:
Asst. Audit Clerk	J	:CAF 3 : :\$1620 :	:	:	:
Jr. Clerk-Stenographer	WJ	:CAF 2 : :\$1440 :	:	:	:
Jr. Clerk-Typist	WJ	:CAF 2 : :\$1440 :	:	:	:
Jr. Clerk-Typist	WJ	:CAF 2 : :\$1440 :	:	:	:



Position	Grade	Incumbent	E. O. D. Date
	Salary	Considered	
Fiscal Accounting Unit:			
	:CAF 9	:	:
Fiscal Accountant W	: \$3200	:	:
	WJ:CAF 7	:	:
Jr. Fiscal Accountant	: \$2600	:	:
	:CAF 5	:	:
Sr. Fisc. Acct. Clerk WJ	: \$2000	:	:
	:CAF 5	:	:
Sr. Fisc. Acct. Clerk WJ	: \$2000	:	:
	:CAF 3	:	:
Asst. Fisc. Acct. Clerk WJ	: \$1620	:	:
	:CAF 3	:	:
Asst. Fisc. Acct. Clerk WJ	: \$1620	:	:
	:CAF 2	:	:
Jr. Fisc. Acct. Clerk WJ	: \$1440	:	:
	:CAF 2	:	:
Jr. Fisc. Acct. Clerk WJ	: \$1440	:	:
	WJ:CAF 2	:	:
Jr. Clerk-Stenographer	: \$1440	:	:
	:CAF 2	:	:
Jr. Clerk-Typist J	: \$1440	:	:
	:CAF 2	:	:
Jr. Clerk-Typist J	: \$1440	:	:
Cost Accounting Unit:			
	:CAF 9	:	:
Cost Accountant W	: \$3200	:	:
	:CAF 7	:	:
Jr. Cost Accountant WJ	: \$2600	:	:
	:CAF 4	:	:
Cost Acct. Clerk WJ	: \$1800	:	:
	:CAF 4	:	:
Cost Acct. Clerk WJ	: \$1800	:	:
	:CAF 4	:	:
Timekeeper J	: \$1800	:	:
	:CAF 4	:	:
Timekeeper J	: \$1800	:	:
	:CAF 2	:	:
Jr. Clerk-Typist WJ	: \$1440	:	:



Position	:Grade :Salary	:	Incumbent		:E. O. D. : Date
			Considered	: Selected	
<u>Procurement Section:</u>					
Sr. Procurement Officer	W :CAF 11 :\$3800	:	:	:	:
Procurement Officer	WJ :CAF 9 :\$3200	:	:	:	:
Senior Clerk	WJ :CAF 5 :\$2000	:	:	:	:
Jr. Clerk-Typist	WJ :CAF 2 :\$1440	:	:	:	:
<u>Property Control Section:</u>					
Jr. Admin. Assistant	WJ :CAF 7 :\$2600	:	:	:	:
Clerk	WJ :CAF 4 :\$1800	:	:	:	:
Jr. Clerk-Typist	WJ :CAF 2 :\$1440	:	:	:	:
<u>Personnel Records Section:</u>					
Sr. Personnel Clerk	W :CAF 5 :\$2000	:	:	:	:
Leave Clerk	W :CAF 4 :\$1800	:	:	:	:
Payroll Clerk	WJ :CAF 4 :\$1800	:	:	:	:
Jr. Clerk-Typist	WJ :CAF 2 :\$1440	:	:	:	:
Jr. Clerk-Typist	WJ :CAF 2 :\$1440	:	:	:	:
Jr. Clerk-Typist	WJ :CAF 2 :\$1440	:	:	:	:
Jr. Clerk-Typist	WJ :CAF 2 :\$1440	:	:	:	:



[illegible]



Position	:Grade	:Incumbent	:E. O. D.
	:Salary	:Considered	:Selected
			:Date
EMPLOYMENT AND HOUSING DIVISION			
Employment Officer	CAF 11 W :\$3800	:	:
Asst. Clerk-Stenographer	CAF 8 WJ:\$1620	:	:
Quarters Section:			
Housing Superintendent	CAF 7 W :\$2600	:	:
Senior Clerk	CAF 5 WJ:\$2000	:	:
Assistant Clerk	CAF 3 WJ:\$1620	:	:
Assistant Clerk	CAF 3 WJ:\$1620	:	:
Junior Clerk	CAF 2 J :\$1440	:	:
Junior Clerk	CAF 2 J :\$1440	:	:
Junior Clerk	CAF 2 J :\$1440	:	:
Junior Clerk	CAF 2 J :\$1440	:	:
Jr. Sanitation Insp.	CU 6 J :\$1680	:	:
Jr. Sanitation Insp.	CU 6 J :\$1680	:	:
Placement Section:			
Placement Officer	CAF 9 W :\$3200	:	:
Jr. Placement Officer	CAF 5 W :\$2000	:	:
Interviewer	CAF 4 J :\$1800	:	:
Interviewer	CAF 4 J :\$1800	:	:
Interviewer	CAF 4 J :\$1800	:	:
Asst. Clerk-Stenographer	CAF 3 WJ:\$1620	:	:
Asst. Clerk-Stenographer	CAF 3 WJ:\$1620	:	:



Position	:Grade :Salary	Incumbent		:E. O. D. : Date
		: Considered	: Selected	

Placement Section (Con't)

	:CAF 2	:	:	:
Jr. Clerk-Typist	WJ:\$1440	:	:	:
	:CAF 2	:	:	:
Jr. Clerk-Typist	WJ:\$1440	:	:	:
	:CAF 2	:	:	:
Jr. Clerk-Typist	WJ:\$1440	:	:	:
	:CAF 2	:	:	:
Jr. Clerk-Typist	WJ:\$1440	:	:	:
	:CAF 2	:	:	:
Jr. Clerk-Typist	WJ:\$1440	:	:	:
	:CAF 2	:	:	:
Jr. Clerk-Typist	WJ:\$1440	:	:	:

Occupational Coding and Records Section:

	:CAF 7	:	:	:
Registrar	WJ:\$2600	:	:	:
	:CAF 5	:	:	:
Sr.Statistical Clerk	WJ:\$2000	:	:	:
	:CAF 4	:	:	:
Coding Clerk	WJ:\$1800	:	:	:
	:CAF 4	:	:	:
Coding Clerk	WJ:\$1800	:	:	:
	:CAF 3	:	:	:
Assistant Clerk	J :\$1620	:	:	:
	:CAF 3	:	:	:
Assistant Clerk	J :\$1620	:	:	:
	:CAF 2	:	:	:
Junior Clerk	J :\$1440	:	:	:
	:CAF 3	:	:	:
Sr. Card Punch Oper.	J :\$1620	:	:	:
	:CAF 1	:	:	:
Under Card Punch Oper.	J :\$1260	:	:	:



Position	Grade	Incumbent	E. O. D.
	Salary	Considered	Selected
			Date

MAINTENANCE AND OPERATIONS DIVISION

Supt. of Maintenance	:CAF 9	:	:
	W :\$3200	:	:
Jr. Clerk-Steno.	:CAF 2	:	:
	WJ:\$1440	:	:

Buildings and Grounds Maintenance and Repair Section:

Bldgs. & Grounds Supt.	:CAF 7	:	:
	WJ:\$2600	:	:
Ass't Storekeeper	:CAF 3	:	:
	J :\$1620	:	:
Jr. Clerk	:CAF 2	:	:
	J :\$1440	:	:
Sr. Foreman Carpenter	:CU 9	:	:
	WJ:\$2300	:	:
Sr. Carpenter	:CU 7	:	:
	J :\$1860	:	:
Sr. Carpenter	:CU 7	:	:
	J :\$1860	:	:
Sr. Carpenter	:CU 7	:	:
	J :\$1860	:	:
Sr. Carpenter	:CU 7	:	:
	J :\$1860	:	:
Sr. Carpenter	:CU 7	:	:
	J :\$1860	:	:
Sr. Carpenter	:CU 7	:	:
	J :\$1860	:	:
Sr. Carpenter	:CU 7	:	:
	J :\$1860	:	:
Sr. Carpenter	:CU 7	:	:
	J :\$1860	:	:
Sr. Carpenter	:CU 7	:	:
	J :\$1860	:	:
Carpenter's Helpers	:CU 4	:	:
	J :\$1320	:	:
Carpenter's Helper	:CU 4	:	:
	J :\$1320	:	:
Carpenter's Helper	:CU 4	:	:
	J :\$1320	:	:



[illegible]



Position	Grade	Incumbent		E. O. D.
	Salary	Considered	Selected	Date
	:CU 9	:	:	:
Sr. Foreman Plumber	WJ:\$2500	:	:	:
	:CU 7	:	:	:
Sr. Plumber	WJ:\$1860	:	:	:
	:CU 7	:	:	:
Sr. Plumber	WJ:\$1860	:	:	:
	:CU 7	:	:	:
Sr. Plumber	WJ:\$1860	:	:	:
	:CU 7	:	:	:
Sr. Plumber	WJ:\$1860	:	:	:
	:CU 7	:	:	:
Sr. Plumber	WJ:\$1860	:	:	:
	:CU 4	:	:	:
Plumber's Helper	J:\$1320	:	:	:
	:CU 4	:	:	:
Plumber's Helper	J:\$1320	:	:	:
	:CU 4	:	:	:
Plumber's Helper	J:\$1320	:	:	:
	:CU 4	:	:	:
Plumber's Helper	J:\$1320	:	:	:
	:CU 4	:	:	:
Plumber's Helper	J:\$1320	:	:	:
	:CU 6	:	:	:
Sr. Gardener	J:\$1680	:	:	:
	:CU 4	:	:	:
Jr. Gardener	J:\$1320	:	:	:
	:CU 7	:	:	:
Foreman of Maintenance	J:\$1860	:	:	:
	:CU 4	:	:	:
Sr. Janitor	J:\$1320	:	:	:
	:CU 6	:	:	:
Sr. Foreman of Laborers	J:\$1680	:	:	:
	WJ:CU 9	:	:	:
Sr. Foreman Communications	:WJ:\$2500	:	:	:
	:CU 7	:	:	:
Sr. Electrician	WJ:\$1860	:	:	:
	:CU 7	:	:	:
Sr. Electrician	WJ:\$1860	:	:	:
	:CU 7	:	:	:
Sr. Electrician	WJ:\$1860	:	:	:



Position	Grade	Salary	Incumbent		E. O. D. Date
			Considered	Selected	
	:CU 7	:	:	:	:
Sr. Electrician	WJ:\$1860	:	:	:	:
	:CU 7	:	:	:	:
Sr. Electrician	WJ:\$1860	:	:	:	:
	:CU 7	:	:	:	:
Sr. Electrician	WJ:\$1860	:	:	:	:
	:CU 4	:	:	:	:
Electrician's Helper	J:\$1320	:	:	:	:
	:CU 4	:	:	:	:
Electrician's Helper	J:\$1320	:	:	:	:
	:CU 4	:	:	:	:
Electrician's Helper	J:\$1320	:	:	:	:
	:CU 4	:	:	:	:
Electrician's Helper	J:\$1320	:	:	:	:
	:CU 4	:	:	:	:
Electrician's Helper	J:\$1320	:	:	:	:
	:CU 4	:	:	:	:
Electrician's Helper	J:\$1320	:	:	:	:
	WJ:CU 8	:	:	:	:
Foreman of Refrigeration	\$2000	:	:	:	:

Garage Section:

	:CU 10	:	:	:	:
Chief Garage Foreman	WJ:\$2600	:	:	:	:
	:CU 9	:	:	:	:
Foreman Mechanic	WJ:\$2000	:	:	:	:
	:CU 7	:	:	:	:
Sr. Mechanic	WJ:\$1860	:	:	:	:
	:CU 7	:	:	:	:
Sr. Mechanic	WJ:\$1860	:	:	:	:
	:CU 7	:	:	:	:
Sr. Mechanic	WJ:\$1860	:	:	:	:
	:CU 7	:	:	:	:
Sr. Mechanic	WJ:\$1860	:	:	:	:
	:CU 7	:	:	:	:
Sr. Mechanic	WJ:\$1860	:	:	:	:
	:CU 5	:	:	:	:
Jr. Mechanic	WJ:\$1500	:	:	:	:
	:CU 5	:	:	:	:
Jr. Mechanic	WJ:\$1500	:	:	:	:



Position	:Grade :	Incumbent		E. O. D.
	:Salary :	Considered	Selected	Date
Jr. Mechanic	WJ:\$1500 :CU 5	:	:	:
Jr. Mechanic	WJ:\$1500 :CAF 4	:	:	:
Storekeeper	WJ:\$1800 :CAF 2	:	:	:
Jr. Clerk	J :\$1440 :CAF 2	:	:	:
Jr. Clerk	J :\$1440 :CAF 1	:	:	:
Under Storekeeper	J :\$1260 :CAF 1	:	:	:
Under Storekeeper	J :\$1260 :CU 7	:	:	:
Welder	WJ:\$1860 :CU 8	:	:	:
Foreman Machinist	WJ:\$2000 :CU 4	:	:	:
Machinist Helper	J :\$1320 :CU 4	:	:	:
Machinist Helper	J :\$1320 :CU 4	:	:	:
Machinist Helper	J :\$1320 :CU 4	:	:	:
Machinist Helper	J :\$1320 :CU 9	:	:	:
Blacksmith Foreman	WJ:\$2300 :CU 7	:	:	:
Blacksmith	J :\$1860 :CU 7	:	:	:
Blacksmith	J :\$1860 :CU 7	:	:	:
Blacksmith	J :\$1860 :CU 7	:	:	:
Blacksmith	J :\$1860 :CU 7	:	:	:
Blacksmith	J :\$1860 :CU 7	:	:	:
Blacksmith	J :\$1860 :CU 4	:	:	:
BlacksmithHelper	J :\$1320 :CU 4	:	:	:
Blacksmith Helper	J :\$1320 :CU 4	:	:	:
Blacksmith Helper	J :\$1320 :CU 4	:	:	:
Blacksmith Helper	J :\$1320 :CU 4	:	:	:
Blacksmith Helper	J :\$1320	:	:	:



Position	Grade	Incumbent	E. O. D.
	Salary	Considered	Selected
			Date

## TRANSPORTATION AND SUPPLY DIVISION

	:CAF 11	:	:	:
Trans. & Supply Officer W	:\$3800	:	:	:
	:CAF 3	:	:	:
Asst. Clerk-Stenographer WJ	:\$1620	:	:	:

Motor Pool Section:

		:CAF 7	3		3	
Meter Pool Supervisor	WJ	:\$2600	3		3	3
		:CAF 5	3		3	3
Prin. Dispatcher	J	:\$2000	3		3	3
		:CAF 4	3		3	3
Storekeeper	J	:\$1800	3		3	3
		:CAF 4	3		3	3
Dispatcher	J	:\$1800	3		3	3
		:CAF 2	3		3	3
Jr. Dispatcher	J	:\$1440	3		3	3
		:CAF 4	3		3	3
Supr. Truck Driver	J	:\$1800	3		3	3
		:CU 5	3		3	3
Hvy. Duty Truck Driver	J	:\$1500	3		3	3
		:CU 3	3		3	3
Lt. Duty Truck Driver	J	:\$1200	3		3	3
		:CAF 2	3		3	3
Jr. Clerk	J	:\$1440	3		3	3

Warehousing Section:

[illegible]



Position	Grade	Salary	Incumbent		E. O. D. Date
			Considered	Selected	
Asst. Storekeeper	J	:CAF 3 :\$1620	:	:	:
Asst. Storekeeper	J	:CAF 3 :\$1620	:	:	:
Asst. Storekeeper	J	:CAF 3 :\$1620	:	:	:
Asst. Storekeeper	J	:CAF 3 :\$1620	:	:	:
Asst. Storekeeper	J	:CAF 3 :\$1620	:	:	:
Asst. Storekeeper	J	:CAF 3 :\$1620	:	:	:
Jr. Storekeeper	J	:CAF 2 :\$1440	:	:	:
Jr. Storekeeper	J	:CAF 2 :\$1340	:	:	:
Jr. Storekeeper	J	:CAF 2 :\$1440	:	:	:
Jr. Storekeeper	J	:CAF 2 :\$1440	:	:	:
Jr. Storekeeper	J	:CAF 2 :\$1440	:	:	:
Jr. Storekeeper	J	:CAF 2 :\$1440	:	:	:
Under Storekeeper	J	:CAF 1 :\$1260	:	:	:
Under Storekeeper	J	:CAF 1 :\$1260	:	:	:
Under Storekeeper	J	:CAF 1 :\$1260	:	:	:
Under Storekeeper	J	:CAF 1 :\$1260	:	:	:
Under Storekeeper	J	:CAF 1 :\$1260	:	:	:
Under Storekeeper	J	:CAF 1 :\$1260	:	:	:
<u>Mess Management Section:</u>					
Project Steward	WJ	:CAF 9 :\$3200	:	:	:
Asst. Project Steward	WJ	:CAF 7 :\$2600	:	:	:
Sr. Steward 20 (40)	WJ	:CU 7 :\$1860	:	:	:
Head Cook 40 (80)	WJ	:CU 6 :\$1680	:	:	:
Cook 60 (120)	J	:CU 4 :\$1320	:	:	:



Position	Grade	Salary	Incumbent		E. O. D. Date
			Considered	Selected	
Kitchen Helper 160 (320)	J :CU 2	: \$1080	:	:	:
Jr. Clerk-Steno.	:CAF 2	:	:	:	:
	WJ: \$1440	:	:	:	:
Chief Baker	:CU 7	:	:	:	:
	J : \$1860	:	:	:	:
Baker	:CU 5	:	:	:	:
	J : \$1500	:	:	:	:
(Baker)	:CU 5	:	:	:	:
	J : \$1500	:	:	:	:
Baker's Assistant 3(6)	:CU 3	:	:	:	:
	J : \$1200	:	:	:	:

COMMUNITY SERVICES DIVISION

		:CAF 13	:	:	:
Chief Community Services	W	:\$5600	:	:	:
		:CAF 4	:	:	:
Clerk-Stenographer	W	:\$1800	:	:	:
<hr/>					
Education Section: (10,000 Population)					
		:P 5	:	:	:
Supt. of Education	W	:\$4600	:	:	:
		:CAF 4	:	:	:
Clerk	W	:\$1800	:	:	:
<hr/>					
		:P 3	:	:	:
High School Principal	W	:\$3200	:	:	:
19		:P 1	:	:	:
High School Instructor	WJ	:\$2000	:	:	:
		:CAF 3	:	:	:
Assistant Clerk	WJ	:\$1620	:	:	:
		:CAF 3	:	:	:
Assistant Clerk	WJ	:\$1620	:	:	:
		:CAF 3	:	:	:
Assistant Clerk	WJ	:\$1620	:	:	:
		:SP 4	:	:	:
Jr. Library Assistant	WJ	:\$1620	:	:	:
		:SP 4	:	:	:
Jr. Library Assistant	WJ	:\$1620	:	:	:



Position	:Grade :Salary	:	Incumbent		:E. O. D. : Date
			Considered	Selected	
Jr. High School Princ.	W :P 3 \$3200	:	:	:	:
19	:P 1	:	:	:	:
Jr. High School Instr.	WJ:\$2000	:	:	:	:
Assistant Clerk	:CAF 3 WJ :\$1620	:	:	:	:
Assistant Clerk	:CAF 3 WJ:\$1620	:	:	:	:
Jr. Library Asst.	:SP 4 WJ:\$1620	:	:	:	:
Jr. Library Asst.	:SP 4 WJ:\$1620	:	:	:	:
Elementary School Princ.	WJ:P 2 \$2600	:	:	:	:
Assistant Teacher	:CAF 3 38 WJ:\$1620	:	:	:	:
Asst. Clerk-Steno.	:CAF 3 WJ:\$1620	:	:	:	:
Education Section: (5,000Population)					
Supt. of Education	:P 4 W :\$3800	:	:	:	:
Clerk	:CAF 4 WJ:\$1800	:	:	:	:
Jr.-Sr. Hi School Princ.	W :P 3 \$3200	:	:	:	:
(9)	:P 1	:	:	:	:
High School Instructor	WJ:\$2000	:	:	:	:
(10)	:P 1	:	:	:	:
Jr. High Instructor	WJ:\$2000	:	:	:	:
Asst. Clerk-Steno.	:CAF 3 WJ:\$1620	:	:	:	:
Asst. Clerk	:CAF 3 WJ:\$1620	:	:	:	:
Jr. Library Asst.	:SP 4 WJ:\$120	:	:	:	:



Position	:Grade :Salary	Incumbent		:E. O. D. : Date
		Considered	Selected	
Elementary School Princ.	WJ:P 2 :\$2600	:	:	:
Assistant Teacher 20	:CAF 3 WJ:\$1620	:	:	:
Assistant Clerk	:CAF 3 WJ:\$1620	:	:	:
Jr. Library Assistant	:SP 4 WJ:\$1620	:	:	:
<u>Health Section:</u>				
(Prin. Medical Officer)W	:P 6 :\$5600	:	:	:
Sr. Medical Officer	:P 5 W:\$4600	:	:	:
Asst. Clerk-Steno.	:CAF 3 W:\$1620	:	:	:
Medical Officer	:P 4 WJ:\$3800	:	:	:
Medical Officer	:P 4 WJ:\$3800	:	:	:
(Medical Officer)	:P 4 WJ:\$3800	:	:	:
Assoc. Medical Officer	:P 3 WJ:\$3200	:	:	:
Assoc. Medical Officer	:P 3 WJ:\$3200	:	:	:
(Assoc. Medical Officer)	:P 3 WJ:\$3200	:	:	:
Dental Officer	:P 4 WJ:\$3800	:	:	:
Assoc. Dental Officer	:P 3 WJ:\$3200	:	:	:
(Assoc. Dental Officer)	:P 3 WJ:\$3200	:	:	:
(Assoc. Dental Officer)	:P 3 WJ:\$3200	:	:	:
Dental Hygienist	:SP 4 WJ:\$1620	:	:	:
(Dental Hygienist)	:SP 4 WJ:\$1620	:	:	:



Position	Grade	Incumbent	E. O. D.
	Salary	Considered	Selected
Chief Nurse	:SP 8 WJ:\$2600	:	:
Asst. Nurse	:SP 7 WJ:\$2300	:	:
Head Nurse	:SP 6 WJ:\$2000	:	:
Staff Nurse, Sr.	:SP 5 WJ:\$1800	:	:
Staff Nurse, Jr.	:SP 4 WJ:\$1620	:	:
Dietitian	:SP 8 WJ:\$2600	:	:
Dietitian	:SP 8 WJ:\$2600	:	:
(Dietitian)	:SP 8 WJ:\$2600	:	:
Pharmacist	:P 1 WJ:\$2000	:	:
X-Ray Technician	:SP 6 WJ:\$2000	:	:
Med. Technician (Lab.)	:SP 5 WJ:\$1860	:	:
(Med. Technician (Lab.))	:SP 5 WJ:\$1860	:	:

Community Welfare Division:

Internal Security Officer	:CAF 9 W:\$3200	:	:
Asst. Clerk-Steno.	:CAF 3 WJ:\$1620	:	:
Jr. Clerk-Steno.	:CAF 2 WJ:\$1440	:	:

Community Welfare Section:

Counselor	:CAF 9 W:\$3200	:	:
Counselor Aid	:CAF 5 J:\$2000	:	:
Asst. Clerk-Steno.	:CAF 3 J:\$1620	:	:



Position	Grade	Incumbent	E. O. D.
	Salary	Considered	Selected
			Date
<u>Fire Department:</u>			
	W : CAF 9	:	:
Assoc. Fire Protection Officer:	\$3200	:	:
<u>War Works Division:</u>			
	: P 5	:	:
Chief, Agric. and Ind.	W : \$4600	:	:
	: CAF 4	:	:
Clerk	WJ: \$1800	:	:
	: CAF 3	:	:
Asst. Clerk-Steno.	J : \$1620	:	:
<u>Agricultural Production Section :</u>			
	: P 4	:	:
Farm Supt.	WJ: \$3800	:	:
	: P 3	:	:
Assoc. Agronomist	WJ: \$3200	:	:
	: CAF 9	:	:
Asst. Farm Supt.	WJ: \$3200	:	:
	: CAF 9	:	:
Asst. Farm Supt.	WJ: \$3200	:	:
	: CAF 9	:	:
Asst. Farm Supt.	WJ: \$3300	:	:
	: SP 7	:	:
Prin. Agric. Aide 9 (9) J	: \$2300	:	:
27 (27)	: CU 6	:	:
Sr. Foreman of Laborers J	: \$1680	:	:
<u>Processing and Marketing Section:</u>			
	: CAF 11	:	:
Agric. Marketing Supt. W	: \$3800	:	:
	: CAF 9	:	:
Plant Supt.	J : \$3200	:	:
	: CAF 7	:	:
Jr. Marketing Spec.	J : \$2600	:	:
	: CU 10	:	:
Chief Foreman	J : \$2600	:	:
	: CU 8	:	:
Senior Foreman	J : \$2000	:	:
	: Cu 6	:	:
Junior Foreman	J : \$1680	:	:



Position	Grade	Salary	Considered	Incumbent	Selected	E. O. D. Date
<u>Manufacturing Section:</u>						
		: CAF 11	:	:	:	:
Manufacturing Supt.	W	: \$3800	:	:	:	:
		: CAF 9	:	:	:	:
Plant Supt.	WJ	: \$3200	:	:	:	:
		: CAF 7	:	:	:	:
Jr. Marketing Spec.	J	: \$2300	:	:	:	:
		: CU 10	:	:	:	:
Chief Foreman	J	: \$2600	:	:	:	:
		: CU 8	:	:	:	:
Senior Foreman	J	: \$2000	:	:	:	:
		: Cu 6	:	:	:	:
Junior Foreman	J	: \$1680	:	:	:	:
<u>Public Works Division:</u>						
		: P 5	:	:	:	:
Sr. Engineer	W	: \$4600	:	:	:	:
		: CAF 4	:	:	:	:
Statistical Clerk	WJ	: \$1800	:	:	:	:
		: CAF 3	:	:	:	:
Asst. Clerk	WJ	: \$1620	:	:	:	:
		: CAF 3	:	:	:	:
Asst. Clerk-Stenographer	WJ	: \$1620	:	:	:	:
		: CAF 2	:	:	:	:
Jr. Clerk-St enographer	J	: \$1440	:	:	:	:
<u>Irrigation and Conservation Section:</u>						
		: P 4	:	:	:	:
Irr. and Con. Engineer	W	: \$3800	:	:	:	:
<u>Highway Section:</u>						
		: P 3	:	:	:	:
Assoc. Highway Eng.	W	: \$3200	:	:	:	:
<u>Construction Section:</u>						
		: P 4	:	:	:	:
Constr. Engineer	W	: \$3800	:	:	:	:
		: CU 10	:	:	:	:
Chief Constr. Foreman	WJ	: \$2600	:	:	:	:
		: CU 8	:	:	:	:
Sr. Constr. Foreman	WJ	: \$2000	:	:	:	:
		: CU 6	:	:	:	:
Jr. Constr. Foreman	J	: \$1680	:	:	:	:



Position		:Grade	:	Incumbent		:E. O. D.
				Considered	Selected	Date
		:P 3	:	:	:	:
Electrical Eng.	W	:\$3200	:	:	:	:
		:CAF 7	:	:	:	:
Asst. Sanitary Eng.	W	:\$2600	:	:	:	:
<u>Design Section:</u>						
		:P 3	:	:	:	:
Assoc. Design Eng.	WJ	:\$3200	:	:	:	:
		:P 2	:	:	:	:
Asst. Hydraulic Eng.	W	:\$2600	:	:	:	:
		:P 2	:	:	:	:
Asst. Architect	J	:\$2600	:	:	:	:
		:SP 5	:	:	:	:
Engineering Aide	WJ	:\$1800	:	:	:	:
		:SP 5	:	:	:	:
Engineering Aide	WJ	:\$1800	:	:	:	:
		:SP 5	:	:	:	:
Engineering Aide	WJ	:\$1800	:	:	:	:
		:SP 5	:	:	:	:
Engineering Aide	WJ	:\$1800	:	:	:	:
		:SP 3	:	:	:	:
Jr. Engineering Aide	J	:\$1440	:	:	:	:
		:SP 5	:	:	:	:
Arch. Draftsman	WJ	:\$1800	:	:	:	:
		:SP 5	:	:	:	:
Carto. Draftsman	WJ	:\$1800	:	:	:	:
		:SP 4	:	:	:	:
Asst. Eng. Draftsman	J	:\$1620	:	:	:	:
		:SP 4	:	:	:	:
Asst. Carto. Draftsman	J	:\$1620	:	:	:	: