

# WELCOME



AMACHE  
JULY 1 and 2, 1943



WELCOME TO THE GRANADA RELOCATION CENTER

AMACHE, COLO.

PROGRAM

July 1 - Thursday

- Morning - General view of center. Block arrangement, living quarters, facilities.
- Lunch - Staff mess hall.
- Afternoon - You are on your own! Ask us what you wish to do or see.
- Dinner - Any evacuee mess hall. 5:00 p.m.
- Evening - Baseball games (in various blocks).  
Movies - "Yank in the RAF" - 12K & 11G mess halls.

Leave for Lamar at 9:00 p.m.

July 2 - Friday

- Morning - Leave Maxwell House Hotel, Lamar, at 9:30 a.m.  
Center farm area.
- Lunch - Any mess hall.
- Afternoon - We're at your service!
- Dinner - Any mess hall.
- Evening - School children will take part in a pageant "Better Americans Through Education" dedicating the new high school building. You are invited to attend. High school auditorium.

Leave for Lamar after the program.

-----

Note: Lil' Neebo (on cover) is the creation of Chris Ishii, former resident of Amache, now a corporal in the U.S. Army at Camp Savage, Minnesota. Jack Ito is carrying on Neebo as a comic strip in the center newspaper.



The brief facts presented in this circular will be supplemented at your request by members of the WRA staff or by evacuees. You are invited to use the PIONEER BUILDING for office headquarters. Ask us anything!

#### AMACHE ORGANIZATIONS

Community Council.....Shigeru Hashii, chairman  
Meet at Town Hall, Block 6H on  
Monday mornings, 9 A. M.  
(Hashii works in Pioneer Building)

Block Managers.....J. Kayokata, chairman  
Meet at Town Hall, Block 6H on  
Tuesdays and Thursdays, 9 A. M.

Boy Scouts.....Ed. Tokunaga, commissioner, 6 troops.  
10E Rec. Hall

Girl Scouts.....Terry Mae Murakami, commissioner.  
11F Recreation Hall

YWCA.....Hanna Uno, general secretary  
6G Recreation Hall, "Hospitality House"

YMCA.....George Morey  
Co-op Store, 8G

Future Farmers of America.....Mas Watanabe  
40 members - Farming 550 acres

Blue Star Mothers.....Mrs. Chikayo Masuoka, president  
(Has four sons in U.S. Army)  
Meet at 6G Rec. Hall, "Hospitality House"

Womens' Federation.....Mrs. Masaji Murai, general secretary  
6G Rec. Hall, "Hospitality House"

USO.....Under the supervision of YWCA  
Meet at Hospitality House--6G Rec. Hall

Hospitality House.....Managed by YWCA and Womens' Federation  
6G Rec. Hall, **open all day.**

American Legion.....Dr. George Takeyama, Center Hospital  
No special meetings.

Ministerial Alliance.....Rev. I. Haratani



# LIST OF KEY MEMBERS OF WRA STAFF

Project Director-----James G. Lindley  
#3 North Administration Building

Assistant Project Director-----Donald E. Harbison  
#3 North Administration Building

Community Activities (Center government,  
Recreation, Co-op stores, housing,  
clubs, religious groups, public wel-  
fare)-----W. Ray Johnson  
Reception Hall (east of Fire Station)

Police Department-----Harlow M. Tomlinson  
#2 South Administration Building

Fire Department-----Vern Campbell  
Fire Station

Employment-----W. J. Knodel  
(both inside and outside center) Emp. office (North of Admin. Bldgs.)

Leave Permits-----Willis Hanson  
Employment Office

Farm-----John N. Spencer  
Agricultural Office (near entrance gate)

Education-----Paul J. Terry  
#7 South Administration Building

Administrative (Property, Procurement,  
Finance, etc.)-----Henry F. Halliday  
#8 North Administration Building

Mess Management-----William "Tiny" Wells  
#6 Warehouse (near north fence)

Public Health-----Dr. W. T. Carstarphen  
Center Hospital

Project Attorney-----Donald T. Horn  
#3 South Administration Building

Public Works-----Ralph J. O'Rourke  
#6 South Administration Building

Center Newspaper-----Joe McClelland  
Pioneer Building

U. S. POST OFFICE

Amache, Colorado (Branch of Lamar Post Office)-----H. R. Smith, Supt.

MILITARY POLICE

335th Escort Guard

Commanding Officer-----Captain John P. Karpen



## FACTS ABOUT THE GRANADA RELOCATION CENTER

POPULATION-----Total number received-----7752  
 Number on leave-----1506  
 Present center population-----6246  
 76% of residents are American citizens (Nisei)  
 24% are aliens (Issei). All citizens were born  
 in this country, all aliens have lived here for  
 at least 19 years.

COMMUNITY GOVERNMENT-----One representative is elected from each of the 29  
 blocks. Shigeru Hashii is council chairman.  
 Block Managers---one is appointed by the project  
 director for each of the 29 blocks. J. Kayokata,  
 chairman.

EDUCATION-----Elementary, Junior High, and Senior High schools  
 have been conducted since last October in  
 Block 8H.

### School Population

Nursery schools	191
Kindergarten	93
Elementary	671
Junior High	434
Senior High	530
Total	1919

In addition, 1,384 men and women are enrolled in  
 adult education classes.

### Teaching Staff

WRA Staff	46	Evacuees	82
-----------	----	----------	----

RELIGION-----Protestants (including Methodists, Baptists,  
 Presbyterians, Holiness, 7th Day Adventists,  
 etc.) membership of approximately 2000. 15  
 ordained ministers in the center.  
 Catholics---a small group who hold services  
 officiated by a Father residing in a neigh-  
 boring community.  
 Buddhists---membership of about 600. Both  
 English and Japanese services are conducted.



## FACTS ABOUT THE GRANADA RELOCATION CENTER (2)

CENTER NEWSPAPER-----Granada Pioneer---Khan Komai, editor  
Pioneer Building--Circulation--3,000.

STORES-----All stores in the center are regularly  
organized cooperatives.

MESS HALLS-----There is one mess hall to each of the 29  
blocks.

HOSPITAL-----An Army type 150-bed hospital is located at  
the northeast corner of the center. It is  
staffed by a Caucasian chief medical officer,  
Dr. W. T. Carstarphen, 5 evacuee doctors,  
9 Caucasian registered nurses, 1 evacuee  
registered nurse, 24 nurses aides, and 1  
Caucasian medical social worker.

POST OFFICE-----Amache, Colorado

CENTER FARM-----Total acreage of farm area---10,390 acres  
Vegetables-----600 acres  
Field Crops-----2,164 acres  
Pasture-----2,894 acres  
Poultry project-----12,000 chickens  
Hog project-----1,000 hogs  
Beef cattle project-----222 beef cattle

PROJECT EMPLOYMENT-----3,034 evacuees  
147 WRA Staff

POLICE DEPARTMENT-----40 evacuees  
2 WRA Staff

FIRE DEPARTMENT-----36 evacuees  
2 WRA Staff



BARRACKS

BARRACKS

12

11

10

9

8

7

1

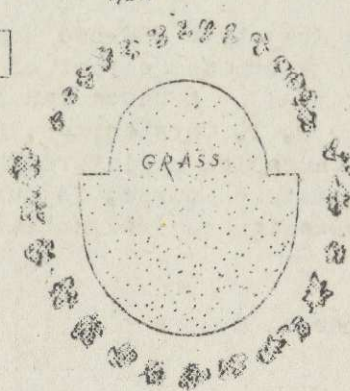
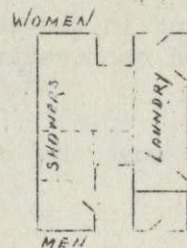
2

3

4

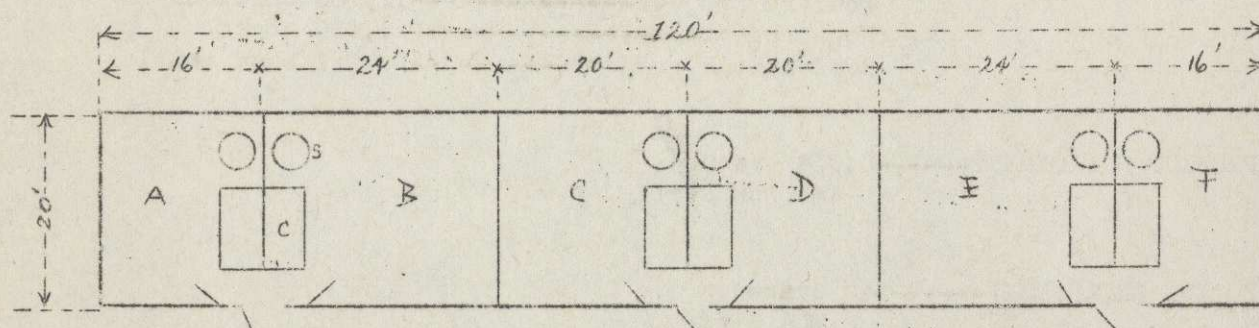
5

6



Recreation  
Hall

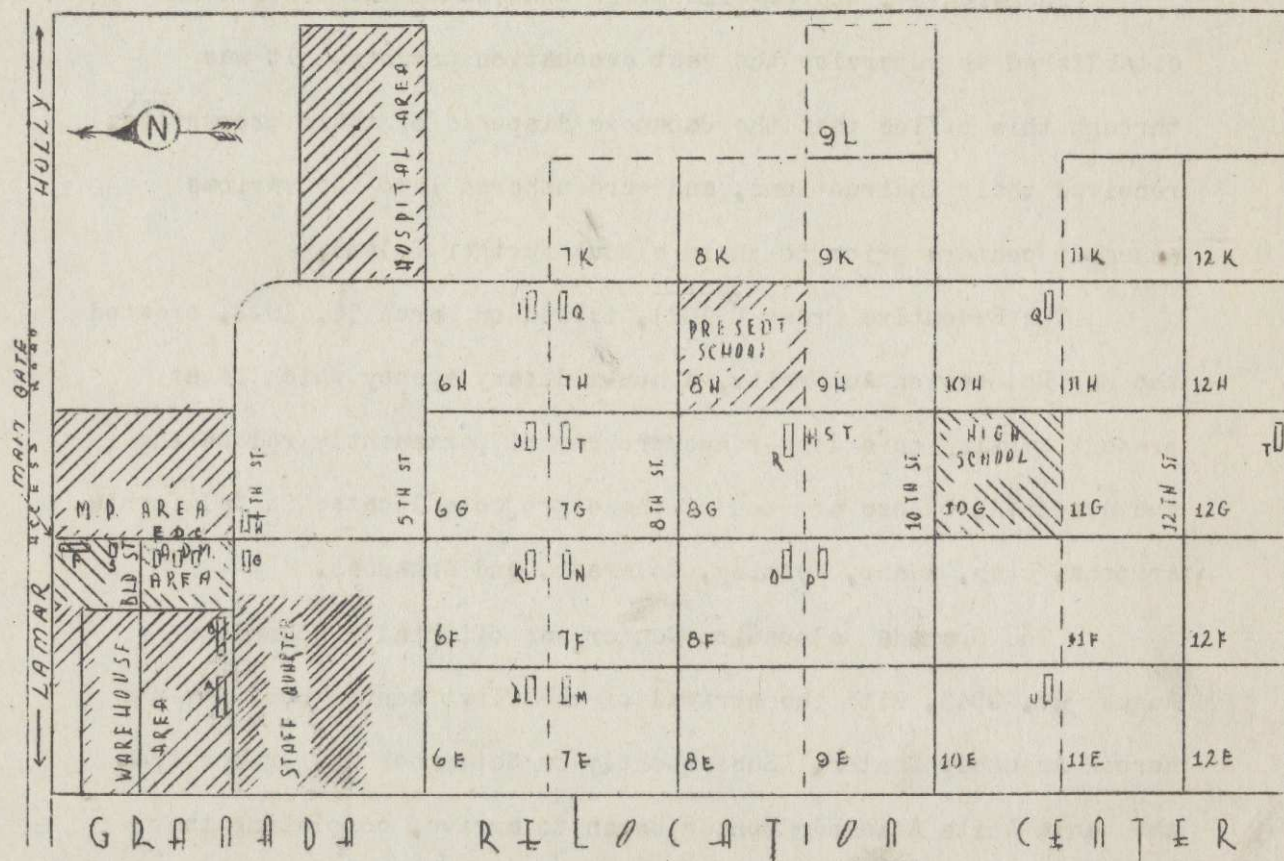
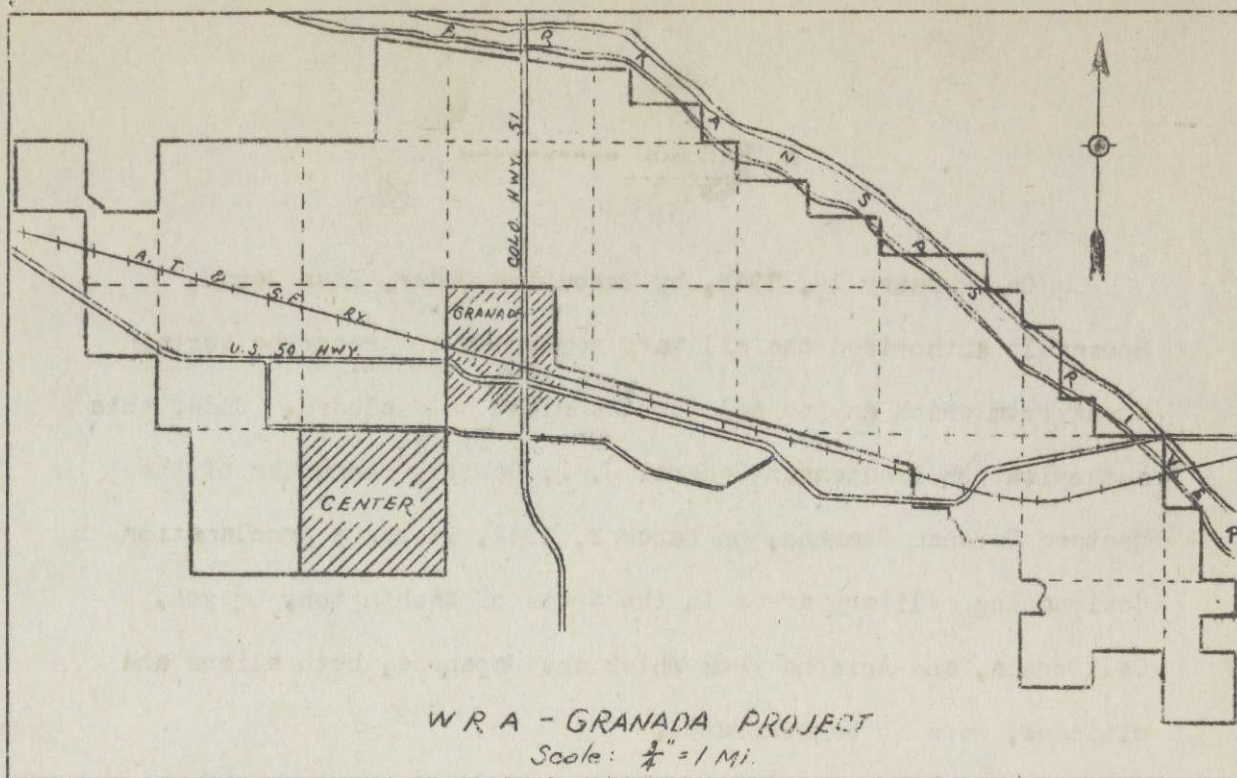
TYPICAL  
BLOCK



S: STOVE  
C: CLOSET

TYPICAL BARRACK





- A PIONEER BLDG.
- B Co-op OFFICE
- C POST OFFICE
- D SOUTH ADM.
- E NORTH ADM.
- F FARM OFFICE
- G FIRE STATION

- H RECEPTION CENTER
- I TOWN HALL
- J HOSPITALITY HOUSE
- K CANTEEN
- L SILK SCREEN
- M REC DEPT. & ART DEPT.
- N VARIETY STORE

- O SHOE STORE
- P POLICE STATION
- Q CHRISTIAN CHURCHES
- R DRY GOODS STORE
- S HANSON HALL
- T BUDDHIST HALLS
- U BOY SCOUT HQT.



A YEAR AGO -----

On February 19, 1942, by Executive Order, President Roosevelt authorized the military commander to prescribe certain areas from which any or all persons might be excluded. Under this authorization Lieutenant General J. L. DeWitt, commander of the Western Defense Command, on March 2, 1942, issued a proclamation designating military areas in the State of Washington, Oregon, California, and Arizona from which the Japanese, both aliens and citizens, were to be evacuated.

On March 14, the Wartime Civil Control Administration was established to supervise the vast evacuation program. It was through this office that the Japanese disposed of their properties, received their instructions, and were ushered into the various assembly centers prior to their exodus further inland.

The Executive Order (9102), issued on March 18, 1942, created the War Relocation Authority, a non-military agency which is at present working on a long-range program of permanently relocating the evacuees. There are ten of these projects located in California, Arizona, Utah, Idaho, Wyoming, Colorado, and Arkansas.

The Granada Relocation Center was officially opened on August 27, 1942, with the arrival of the first contingent from the Merced Assembly Center. Subsequently on September 19, groups from the Santa Anita Assembly Center began to arrive, completing the project's occupation on September 30, 1942.