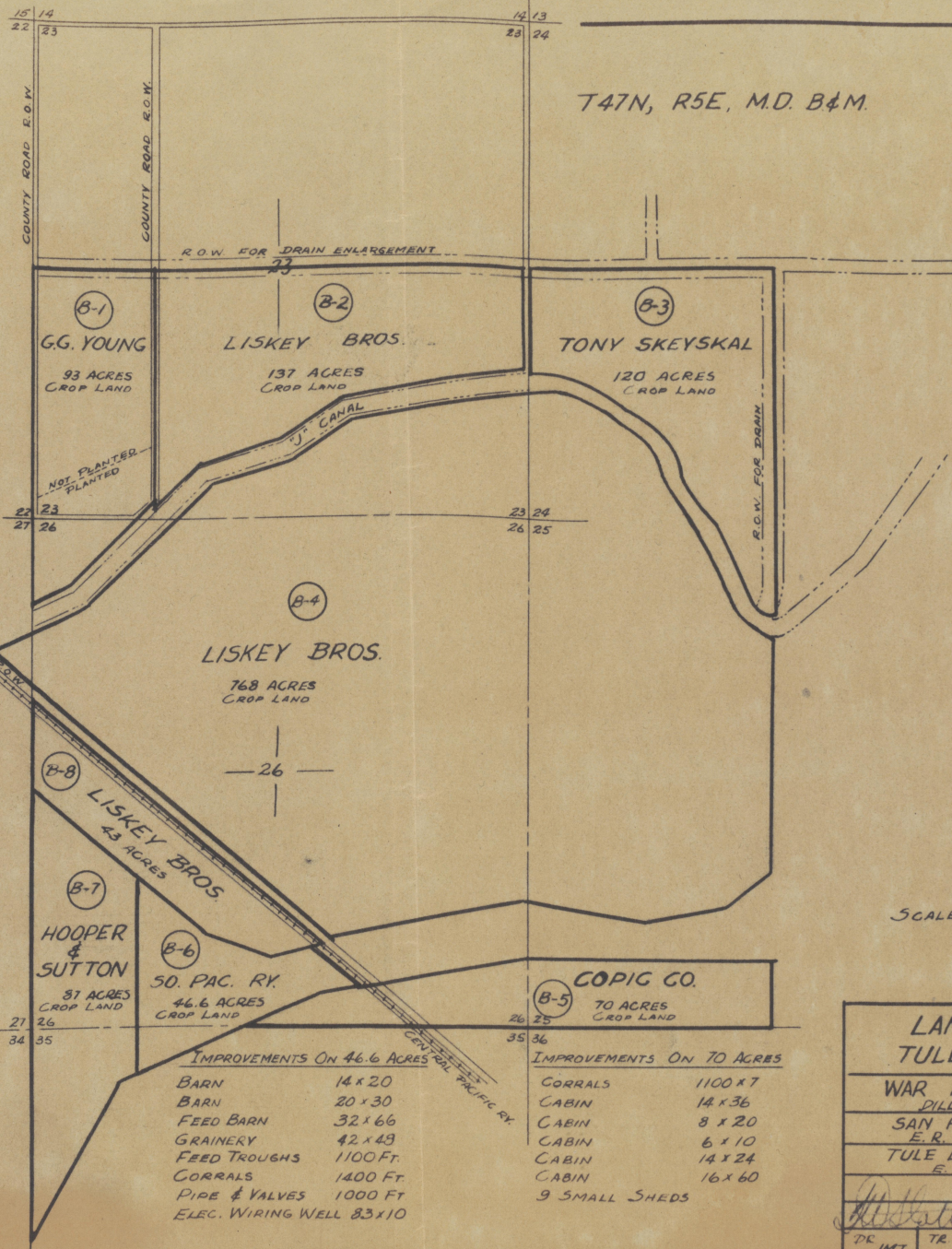


T47N, R5E, M.D. B&M.



IMPROVEMENTS ON 87 ACRES

CABIN 12 x 16
CABIN 10 x 12
CORRALS 3200 FT.
FEED TROUGHS 360 FT.

HOOPER
&
SUTTON

87 ACRES
CROP LAND

50. PAC. RY.
46.6 ACRES
CROP LAND

IMPROVEMENTS ON 46.6 ACRES

BARN 14 x 20
BARN 20 x 30
FEED BARN 32 x 66
GRAINERY 42 x 49
FEED TROUGHS 1100 FT.
CORRALS 1400 FT.
PIPE & VALVES 1000 FT
ELEC. WIRING WELL 83 x 10

COPIC CO.

70 ACRES
CROP LAND

IMPROVEMENTS ON 70 ACRES

CORRALS 1100 x 7
CABIN 14 x 36
CABIN 8 x 20
CABIN 6 x 10
CABIN 14 x 24
CABIN 16 x 60
9 SMALL SHEDS

SCALE: 4" = 1 MILE

LAND OWNERSHIP MAP
TULELAKE CAMP AREA

WAR RELOCATION AUTHORITY

DILLON S. MEYER DIRECTOR

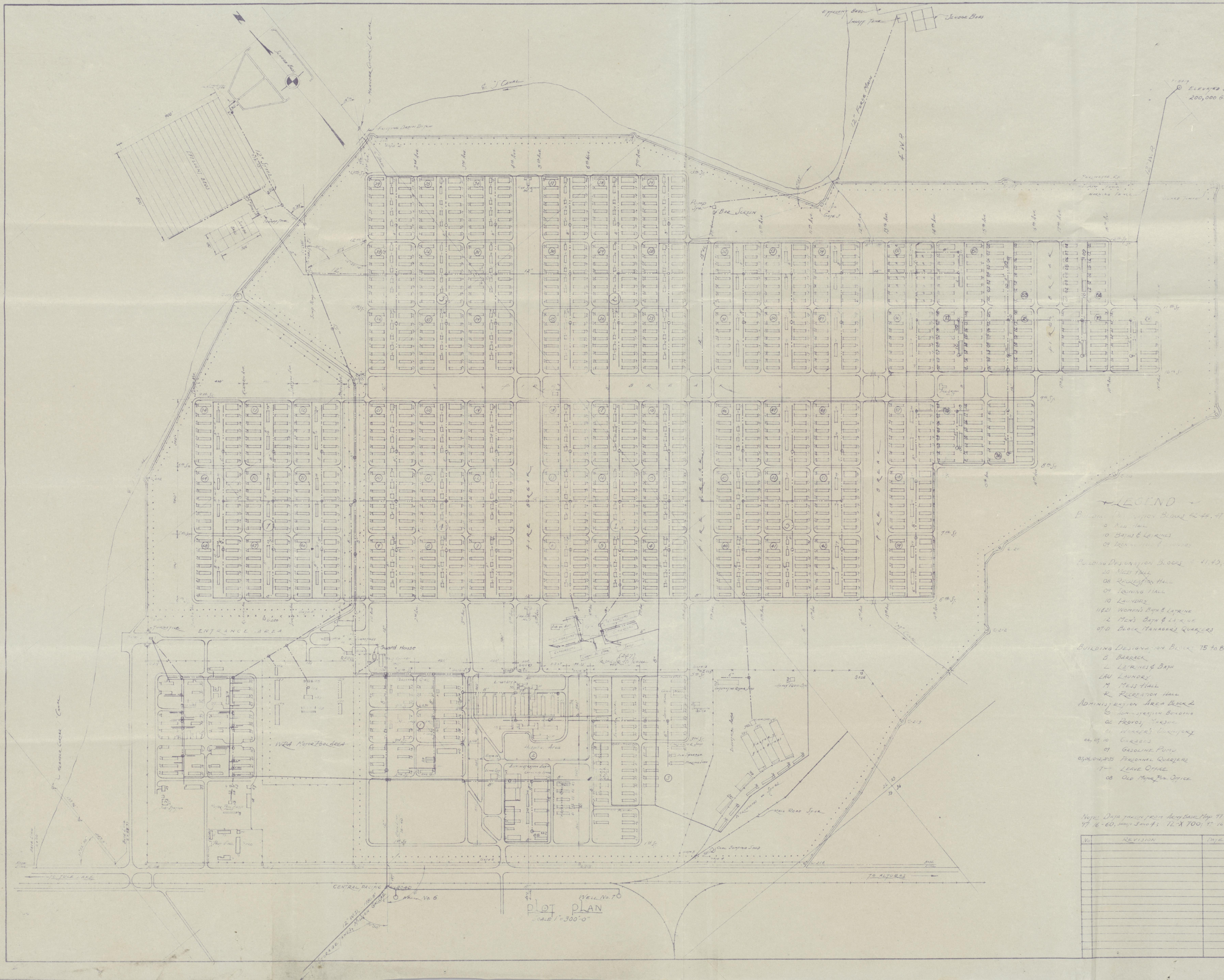
SAN FRANCISCO REGIONAL OFFICE

E. R. FRYER REGIONAL DIRECTOR

TULE LAKE WAR RELOCATION PROJECT

E. L. SHIRKELL PROJECT DIRECTOR

DR. JMT	TR	CH.	7-22-42
---------	----	-----	---------



- HOSPITAL AREA BLOCK 2**
- 1. HOSPITAL
 - 2. DOCTOR'S QUARTERS
 - 3. NURSE'S QUARTERS
 - 4. ISOLATION WARD
 - 5. CHILDREN'S WARD
 - 6. OBSTETRICAL WARD
 - 7. HOSPITAL KITCHEN & MESS HALL
 - 8. HALL
 - 9. DRESSING BLDG.
 - 10. DRYING
 - 11. BOILER HOUSE
 - 12. PATIENTS' WARD
 - 13. DENTAL CLINIC
 - 14. X-RAY

- MILITARY AREA BLOCK 1**
- 1. PERSONNEL QUARTERS
 - 2. KITCHEN
 - 3. MILITARY QUARTERS
 - 4. LATRINE
 - 5. END OF (HALL)
 - 6. GARAGE
 - 7. CHANGING ROOM
 - 8. APPOINTED PERSONNEL QUARTERS
 - 9. SUPPLY ROOM
 - 10. PRIVATE MESS HALL
 - 11. POST OFFICE

- MILITARY AREA**
- 1. SINKING GATE
 - 2. OFFICIALS' QUARTERS
 - 3. OFFICIALS' MESS
 - 4. OFFICIALS' RECREATION
 - 5. ENLISTED MEN'S BARBERS
 - 6. JUNK ROOM
 - 7. RECREATION BLDG.
 - 8. RECREATION BLDG.
 - 9. FIRE STATION
 - 10. SINKING GATE
 - 11. JUNK ROOM
 - 12. CHANGING ROOM
 - 13. ADMINISTRATION BLDG.
 - 14. ENLISTED MEN'S MESS
 - 15. JUNK ROOM
 - 16. DISPENSARY
 - 17. MOTOR BUS (HALL)
 - 18. LATRINE
 - 19. 2 VEHICLE WASH RACK
 - 20. CHANGING ROOM
 - 21. TWO AMBULANCE SHED
 - 22. MOTOR REPAIR
 - 23. GAS STATION 2 PUMPERS

- LEGEND**
- 1. BUILDING DESIGNATION BLOCK 1, 2, 3, 4
 - 2. BUILDING DESIGNATION BLOCK 5, 6, 7, 8
 - 3. BUILDING DESIGNATION BLOCK 9, 10, 11, 12
 - 4. BUILDING DESIGNATION BLOCK 13, 14, 15, 16
 - 5. BUILDING DESIGNATION BLOCK 17, 18, 19, 20
 - 6. BUILDING DESIGNATION BLOCK 21, 22, 23, 24
 - 7. BUILDING DESIGNATION BLOCK 25, 26, 27, 28
 - 8. BUILDING DESIGNATION BLOCK 29, 30, 31, 32
 - 9. BUILDING DESIGNATION BLOCK 33, 34, 35, 36
 - 10. BUILDING DESIGNATION BLOCK 37, 38, 39, 40
 - 11. BUILDING DESIGNATION BLOCK 41, 42, 43, 44
 - 12. BUILDING DESIGNATION BLOCK 45, 46, 47, 48
 - 13. BUILDING DESIGNATION BLOCK 49, 50, 51, 52
 - 14. BUILDING DESIGNATION BLOCK 53, 54, 55, 56
 - 15. BUILDING DESIGNATION BLOCK 57, 58, 59, 60
 - 16. BUILDING DESIGNATION BLOCK 61, 62, 63, 64
 - 17. BUILDING DESIGNATION BLOCK 65, 66, 67, 68
 - 18. BUILDING DESIGNATION BLOCK 69, 70, 71, 72
 - 19. BUILDING DESIGNATION BLOCK 73, 74, 75, 76
 - 20. BUILDING DESIGNATION BLOCK 77, 78, 79, 80
 - 21. BUILDING DESIGNATION BLOCK 81, 82, 83, 84
 - 22. BUILDING DESIGNATION BLOCK 85, 86, 87, 88
 - 23. BUILDING DESIGNATION BLOCK 89, 90, 91, 92
 - 24. BUILDING DESIGNATION BLOCK 93, 94, 95, 96
 - 25. BUILDING DESIGNATION BLOCK 97, 98, 99, 100

- WAREHOUSE AREA - BLOCK 3**
- 1. WAREHOUSE
 - 2. WAREHOUSE
 - 3. WAREHOUSE
 - 4. WAREHOUSE
 - 5. WAREHOUSE
 - 6. WAREHOUSE
 - 7. WAREHOUSE
 - 8. WAREHOUSE
 - 9. WAREHOUSE
 - 10. WAREHOUSE
 - 11. WAREHOUSE
 - 12. WAREHOUSE
 - 13. WAREHOUSE
 - 14. WAREHOUSE
 - 15. WAREHOUSE
 - 16. WAREHOUSE
 - 17. WAREHOUSE
 - 18. WAREHOUSE
 - 19. WAREHOUSE
 - 20. WAREHOUSE
 - 21. WAREHOUSE
 - 22. WAREHOUSE
 - 23. WAREHOUSE
 - 24. WAREHOUSE
 - 25. WAREHOUSE
 - 26. WAREHOUSE
 - 27. WAREHOUSE
 - 28. WAREHOUSE
 - 29. WAREHOUSE
 - 30. WAREHOUSE
 - 31. WAREHOUSE
 - 32. WAREHOUSE
 - 33. WAREHOUSE
 - 34. WAREHOUSE
 - 35. WAREHOUSE
 - 36. WAREHOUSE
 - 37. WAREHOUSE
 - 38. WAREHOUSE
 - 39. WAREHOUSE
 - 40. WAREHOUSE
 - 41. WAREHOUSE
 - 42. WAREHOUSE
 - 43. WAREHOUSE
 - 44. WAREHOUSE
 - 45. WAREHOUSE
 - 46. WAREHOUSE
 - 47. WAREHOUSE
 - 48. WAREHOUSE
 - 49. WAREHOUSE
 - 50. WAREHOUSE
 - 51. WAREHOUSE
 - 52. WAREHOUSE
 - 53. WAREHOUSE
 - 54. WAREHOUSE
 - 55. WAREHOUSE
 - 56. WAREHOUSE
 - 57. WAREHOUSE
 - 58. WAREHOUSE
 - 59. WAREHOUSE
 - 60. WAREHOUSE
 - 61. WAREHOUSE
 - 62. WAREHOUSE
 - 63. WAREHOUSE
 - 64. WAREHOUSE
 - 65. WAREHOUSE
 - 66. WAREHOUSE
 - 67. WAREHOUSE
 - 68. WAREHOUSE
 - 69. WAREHOUSE
 - 70. WAREHOUSE
 - 71. WAREHOUSE
 - 72. WAREHOUSE
 - 73. WAREHOUSE
 - 74. WAREHOUSE
 - 75. WAREHOUSE
 - 76. WAREHOUSE
 - 77. WAREHOUSE
 - 78. WAREHOUSE
 - 79. WAREHOUSE
 - 80. WAREHOUSE
 - 81. WAREHOUSE
 - 82. WAREHOUSE
 - 83. WAREHOUSE
 - 84. WAREHOUSE
 - 85. WAREHOUSE
 - 86. WAREHOUSE
 - 87. WAREHOUSE
 - 88. WAREHOUSE
 - 89. WAREHOUSE
 - 90. WAREHOUSE
 - 91. WAREHOUSE
 - 92. WAREHOUSE
 - 93. WAREHOUSE
 - 94. WAREHOUSE
 - 95. WAREHOUSE
 - 96. WAREHOUSE
 - 97. WAREHOUSE
 - 98. WAREHOUSE
 - 99. WAREHOUSE
 - 100. WAREHOUSE

- NOTE DATA FROM**
- 1. DATA FROM
 - 2. DATA FROM
 - 3. DATA FROM
 - 4. DATA FROM
 - 5. DATA FROM
 - 6. DATA FROM
 - 7. DATA FROM
 - 8. DATA FROM
 - 9. DATA FROM
 - 10. DATA FROM
 - 11. DATA FROM
 - 12. DATA FROM
 - 13. DATA FROM
 - 14. DATA FROM
 - 15. DATA FROM
 - 16. DATA FROM
 - 17. DATA FROM
 - 18. DATA FROM
 - 19. DATA FROM
 - 20. DATA FROM
 - 21. DATA FROM
 - 22. DATA FROM
 - 23. DATA FROM
 - 24. DATA FROM
 - 25. DATA FROM
 - 26. DATA FROM
 - 27. DATA FROM
 - 28. DATA FROM
 - 29. DATA FROM
 - 30. DATA FROM
 - 31. DATA FROM
 - 32. DATA FROM
 - 33. DATA FROM
 - 34. DATA FROM
 - 35. DATA FROM
 - 36. DATA FROM
 - 37. DATA FROM
 - 38. DATA FROM
 - 39. DATA FROM
 - 40. DATA FROM
 - 41. DATA FROM
 - 42. DATA FROM
 - 43. DATA FROM
 - 44. DATA FROM
 - 45. DATA FROM
 - 46. DATA FROM
 - 47. DATA FROM
 - 48. DATA FROM
 - 49. DATA FROM
 - 50. DATA FROM
 - 51. DATA FROM
 - 52. DATA FROM
 - 53. DATA FROM
 - 54. DATA FROM
 - 55. DATA FROM
 - 56. DATA FROM
 - 57. DATA FROM
 - 58. DATA FROM
 - 59. DATA FROM
 - 60. DATA FROM
 - 61. DATA FROM
 - 62. DATA FROM
 - 63. DATA FROM
 - 64. DATA FROM
 - 65. DATA FROM
 - 66. DATA FROM
 - 67. DATA FROM
 - 68. DATA FROM
 - 69. DATA FROM
 - 70. DATA FROM
 - 71. DATA FROM
 - 72. DATA FROM
 - 73. DATA FROM
 - 74. DATA FROM
 - 75. DATA FROM
 - 76. DATA FROM
 - 77. DATA FROM
 - 78. DATA FROM
 - 79. DATA FROM
 - 80. DATA FROM
 - 81. DATA FROM
 - 82. DATA FROM
 - 83. DATA FROM
 - 84. DATA FROM
 - 85. DATA FROM
 - 86. DATA FROM
 - 87. DATA FROM
 - 88. DATA FROM
 - 89. DATA FROM
 - 90. DATA FROM
 - 91. DATA FROM
 - 92. DATA FROM
 - 93. DATA FROM
 - 94. DATA FROM
 - 95. DATA FROM
 - 96. DATA FROM
 - 97. DATA FROM
 - 98. DATA FROM
 - 99. DATA FROM
 - 100. DATA FROM

TULE LAKE PROJECT MASTER PLAN

WAR RELOCATION AUTHORITY

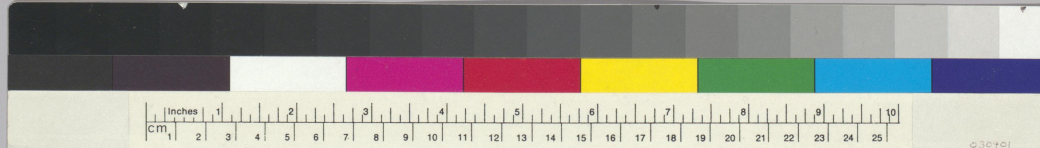
TULE LAKE WAR RELOCATION PROJECT

DATE: 1/1/44

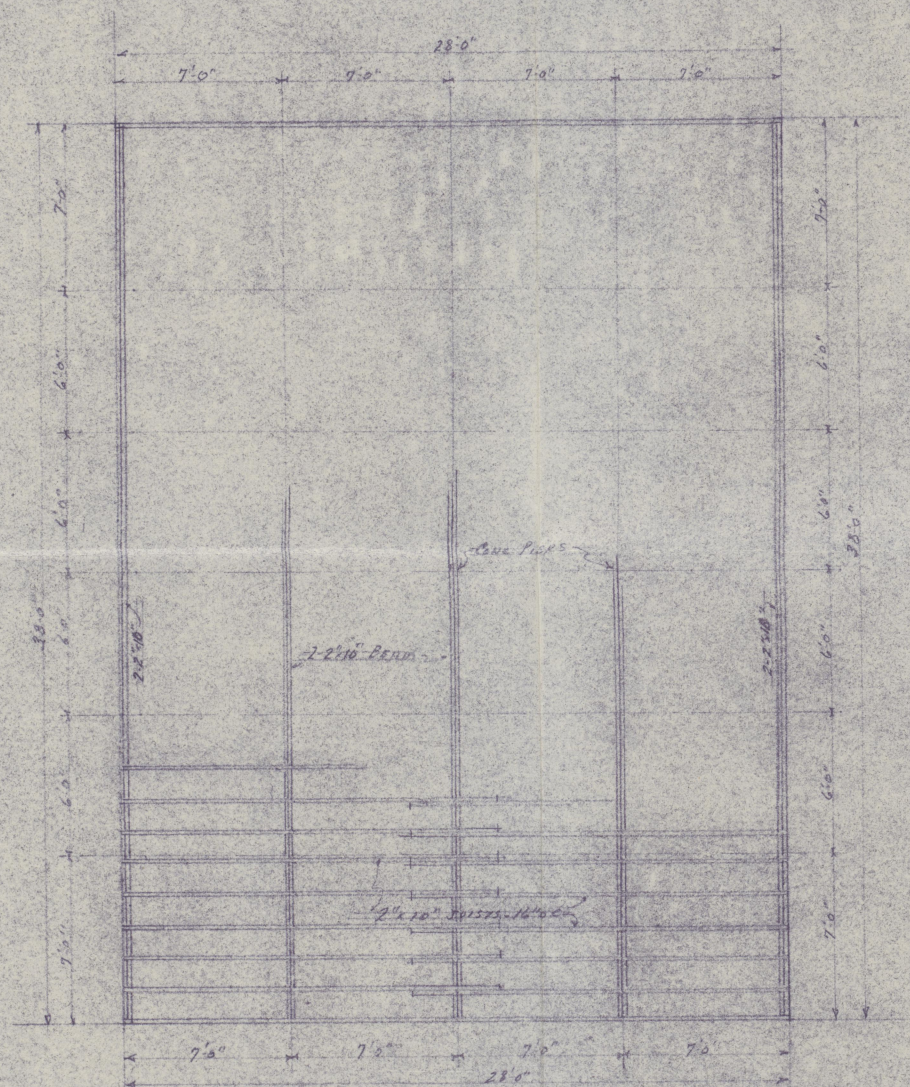
SCALE: 1" = 300'-0"

PLAT NO. 70

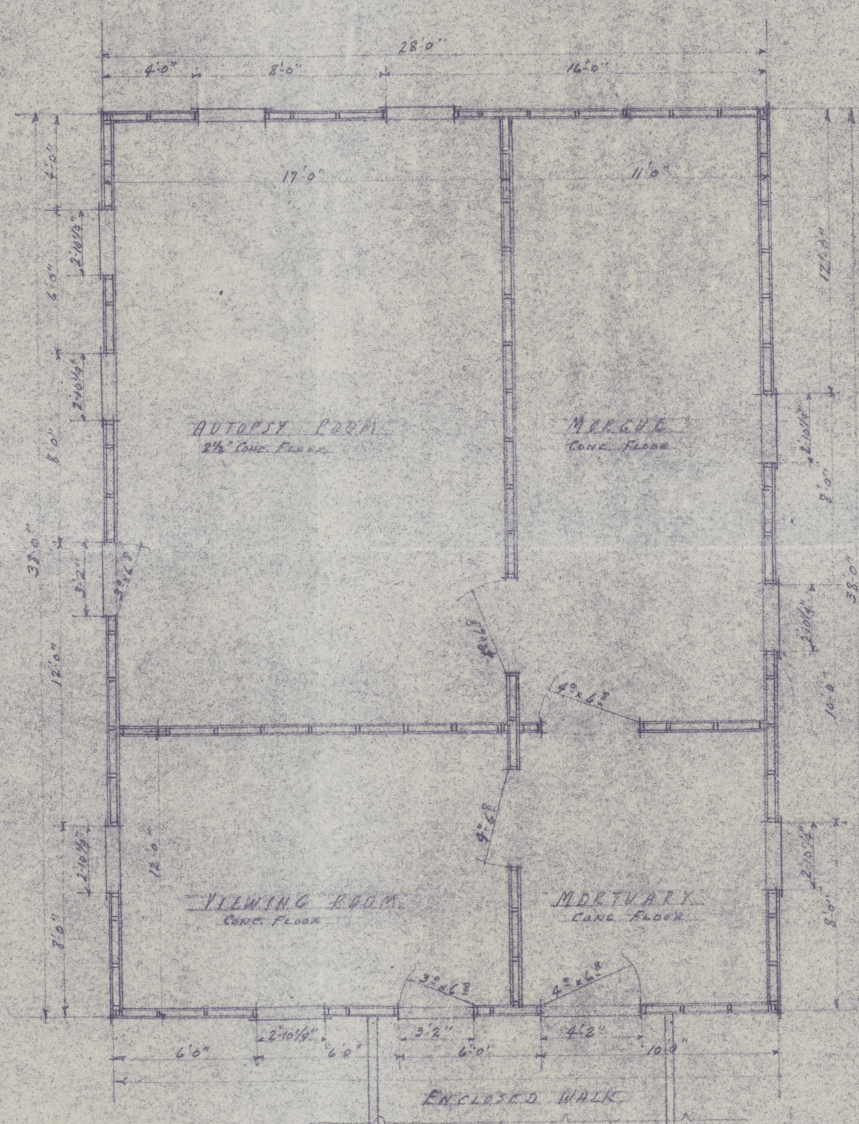
SCALE 1" = 300'-0"



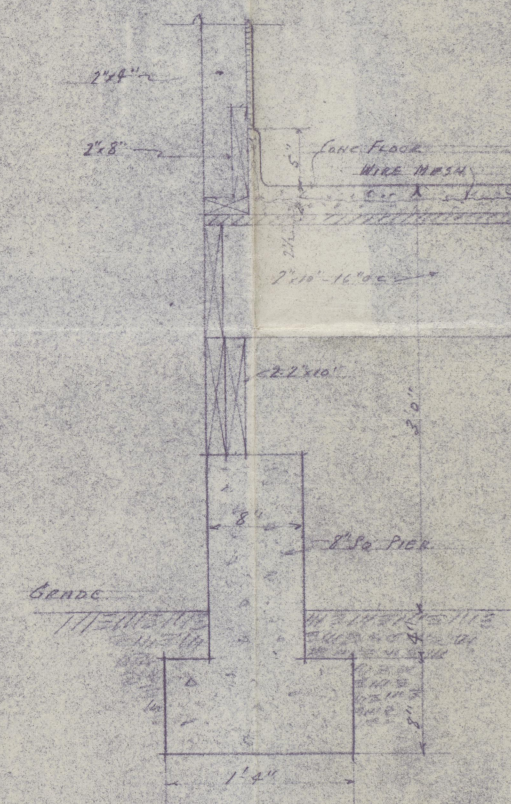
Tule
Turquoise
Plains



FLOOR FRAMING PLAN



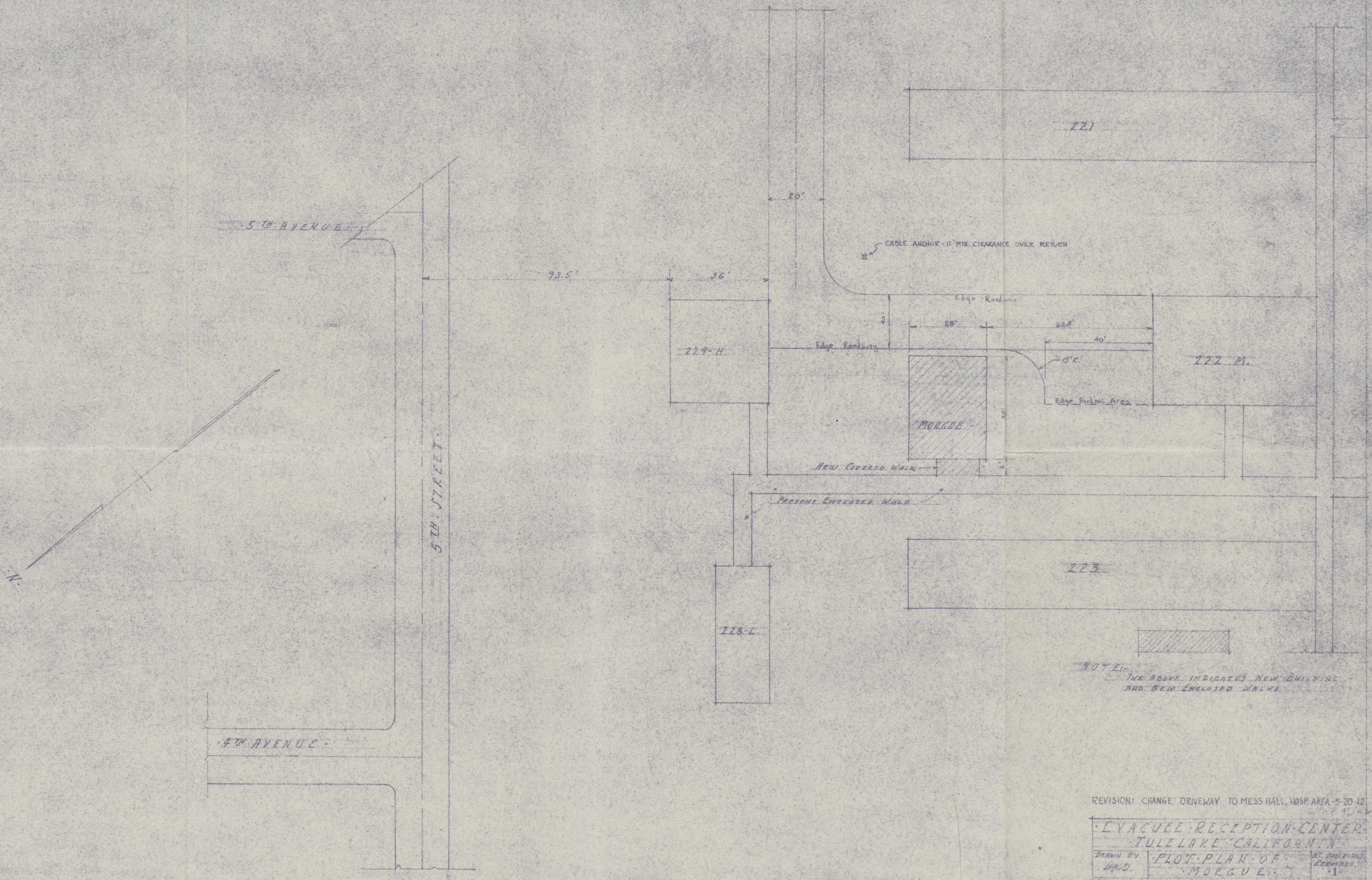
FLOOR PLAN
SCALE 1/4" = 1'-0"



WALL SECTION
SCALE $1\frac{1}{2}'' = 1'-0''$

IVACUEE RECEPTION CENTER TULE LAKE CALIFORNIA		REPLACE REQUIRED
ISSUED BY HMS	MORQUE	1
CHECKED BY BKH	FRED J. WHITE CO. E	REC. NO B-52
DATE July 12	MORRISON-KNUDSEN CO. INC.	1
APPROVE DATE		

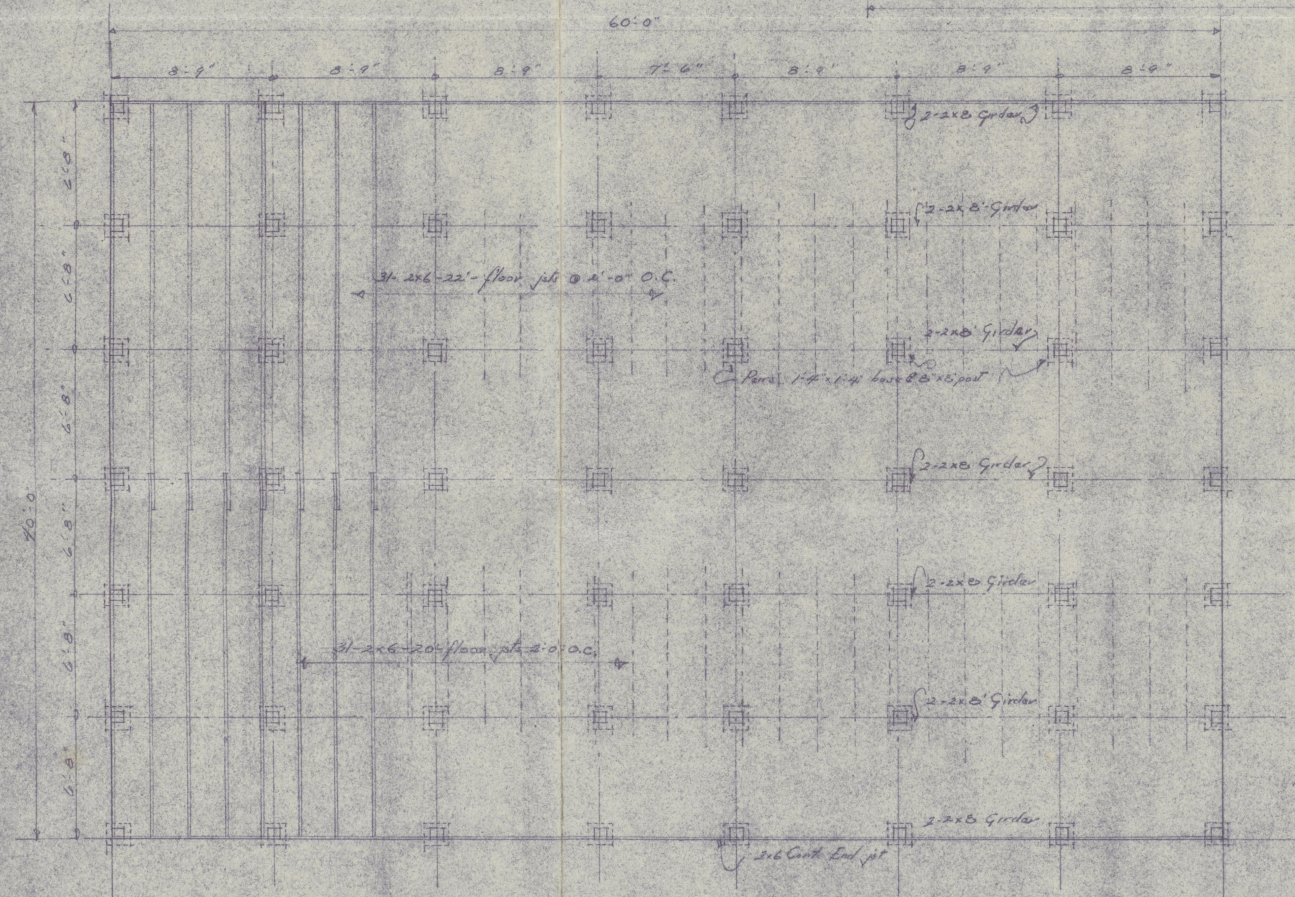
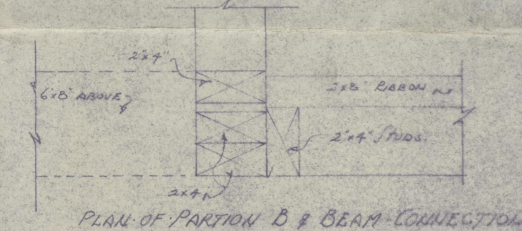
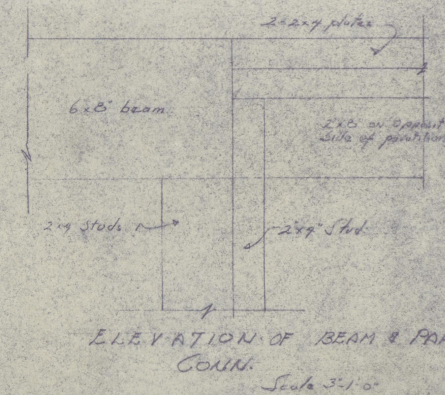
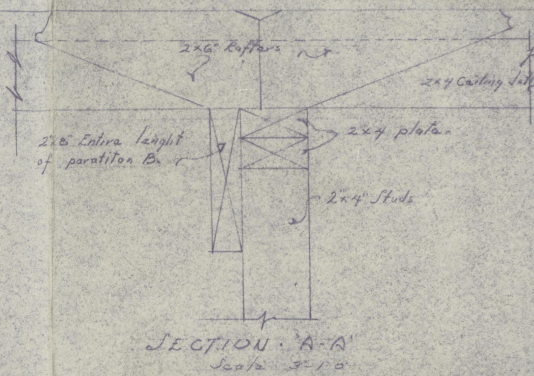
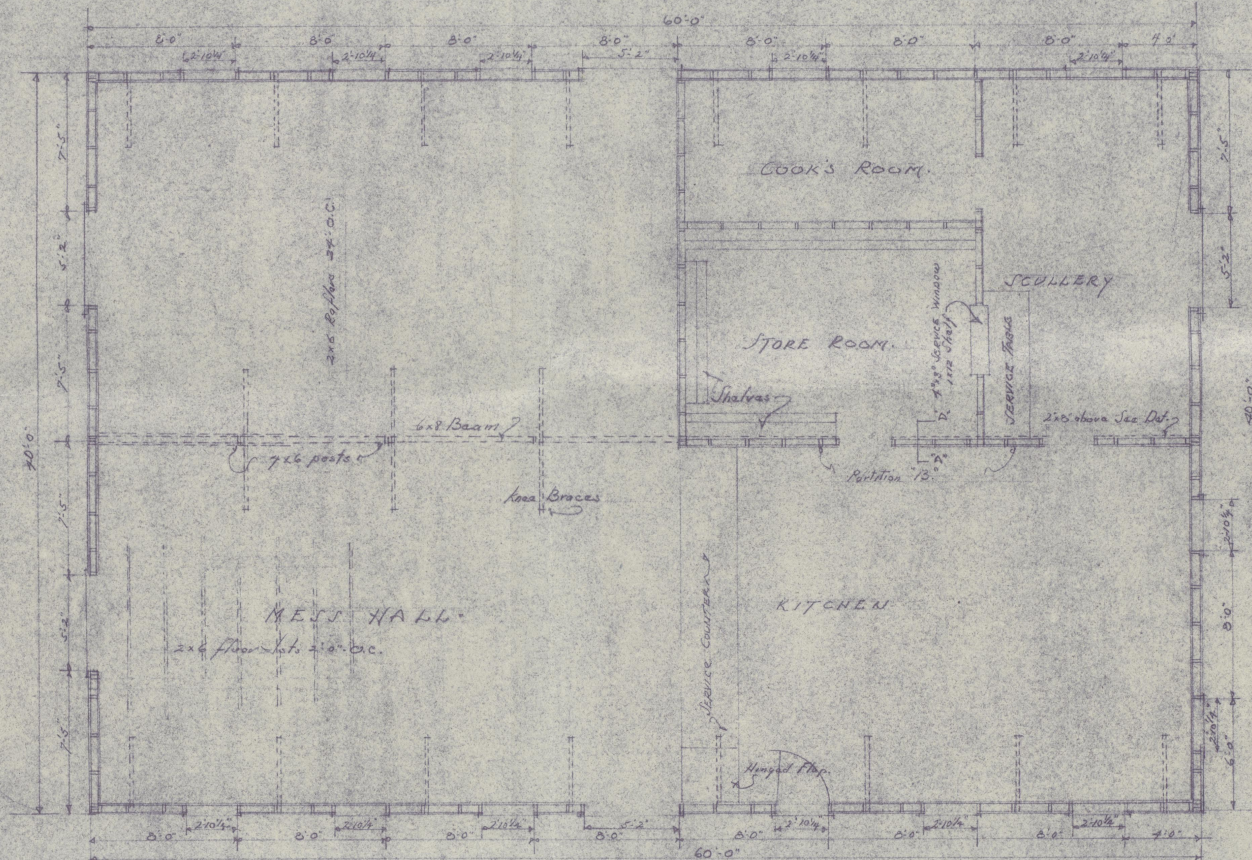




NOTE: THE ABOVE INDICATES NEW BUILDING AND NEW ENCLOSED WALKS

REVISION: CHANGE DRIVEWAY TO MESS HALL, WOSP AREA-5-20-42

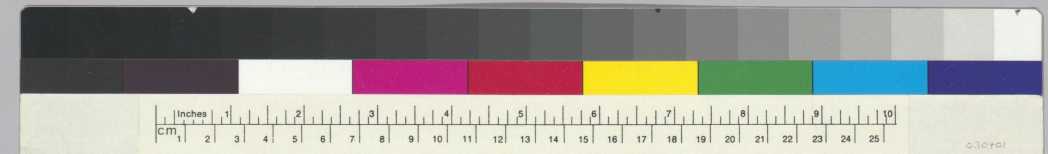
LYACUE RECEPTION CENTER TULE LAKE, CALIFORNIA		
DRAWN BY W.D.	PLOT PLAN OF MORQUE	NO. OF SHEETS 1
CHECKED BY W.D.	FORD J. TRAVIS CO. S. MORRISON-KNUDSEN CO. INC.	SHEET NO. 1
DATE 5/15/42	APPROVED W.D.	DATE 5/15/42

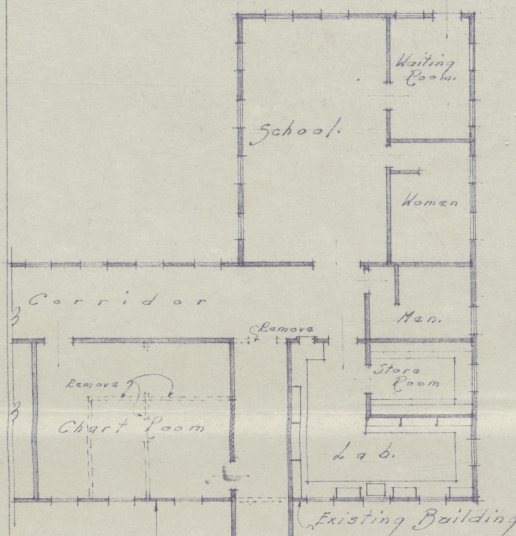


FLOOR PLAN MESS HALL
Hospital - Bureau
Scale 1/4" = 1'-0"

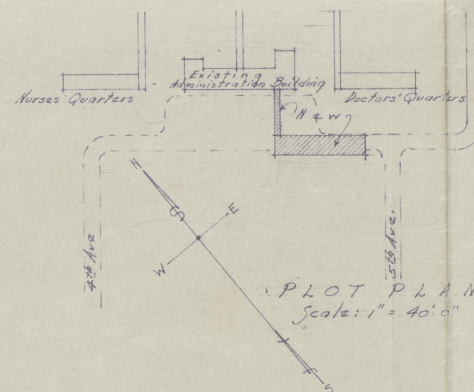
FLOOR FRAMING & FOUNDATION
PLAN
Scale 1/4" = 1'-0"

EVACUATE RECEPTION CENTER	
TULARE, CALIFORNIA	
DESIGNED BY	HOSPITAL GROUP
CHECKED	JOHN J. THOMAS CO.
DATE	NOVEMBER 1941
APPROVED	W. J. THOMAS

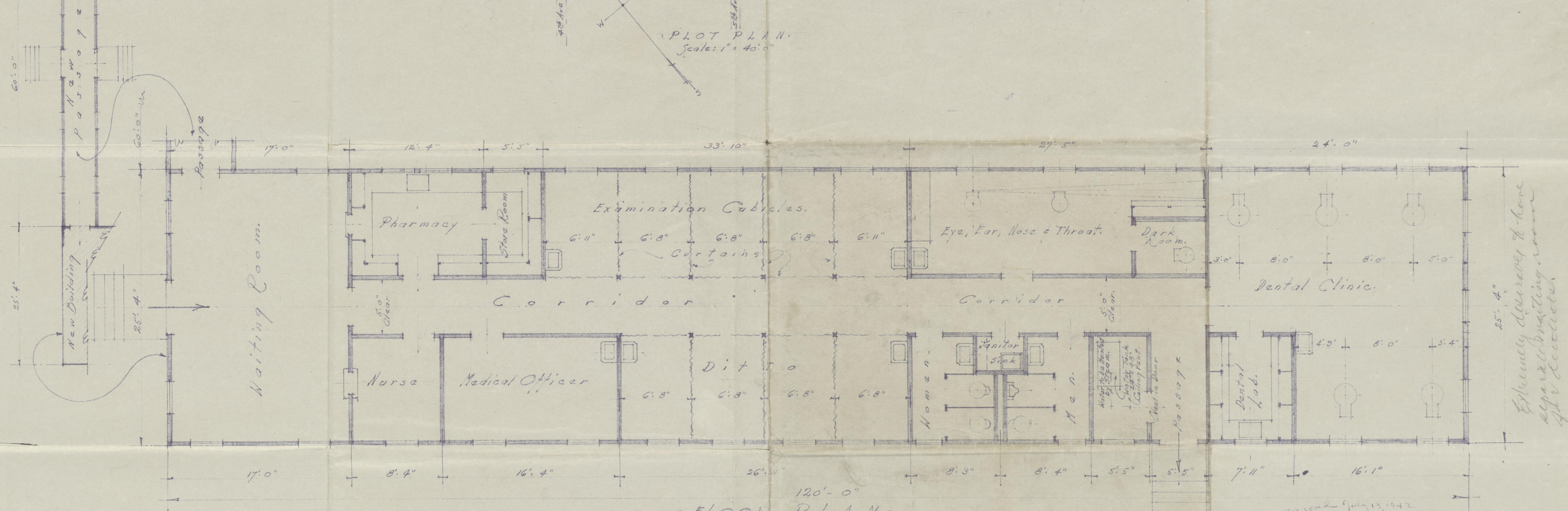




FLOOR PLAN OF EXISTING BUILDING
SHOWING ALTERATIONS AND CONNECTING
PASSAGE TO NEW BUILDING.
Scale: 1/8" = 1'-0"



PLOT PLAN
Scale: 1" = 40'-0"



FLOOR PLAN
Scale: 1/4" = 1'-0"

PRELIMINARY ISSUE

DATE JULY 13, 1942

THIS PLAN ISSUED FOR
ADVANCE INFORMATION ONLY.

Tale
Outpatient
Bldg

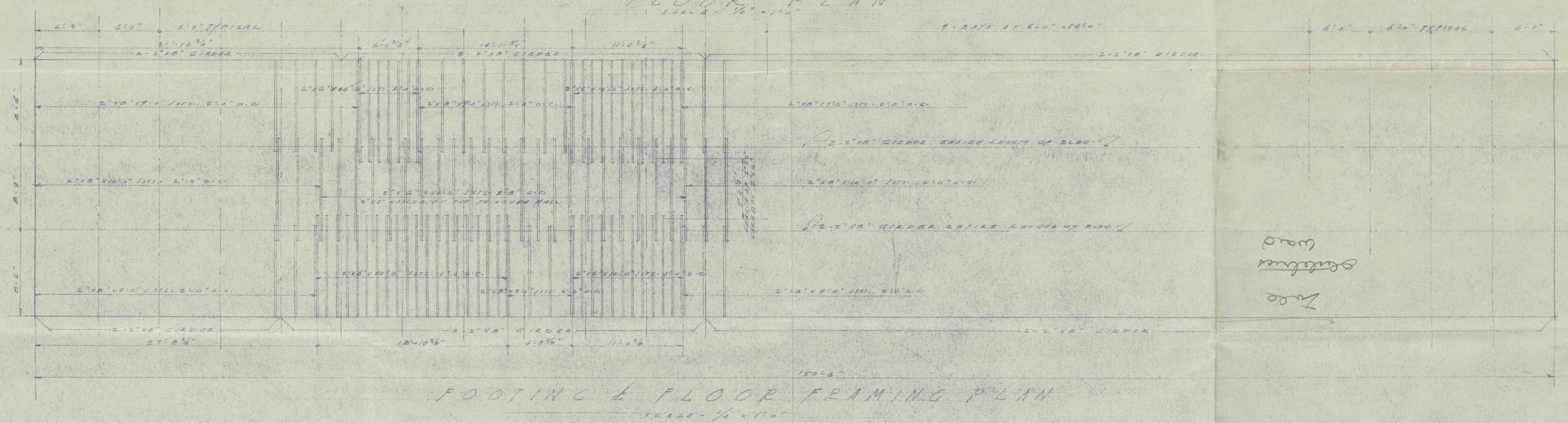
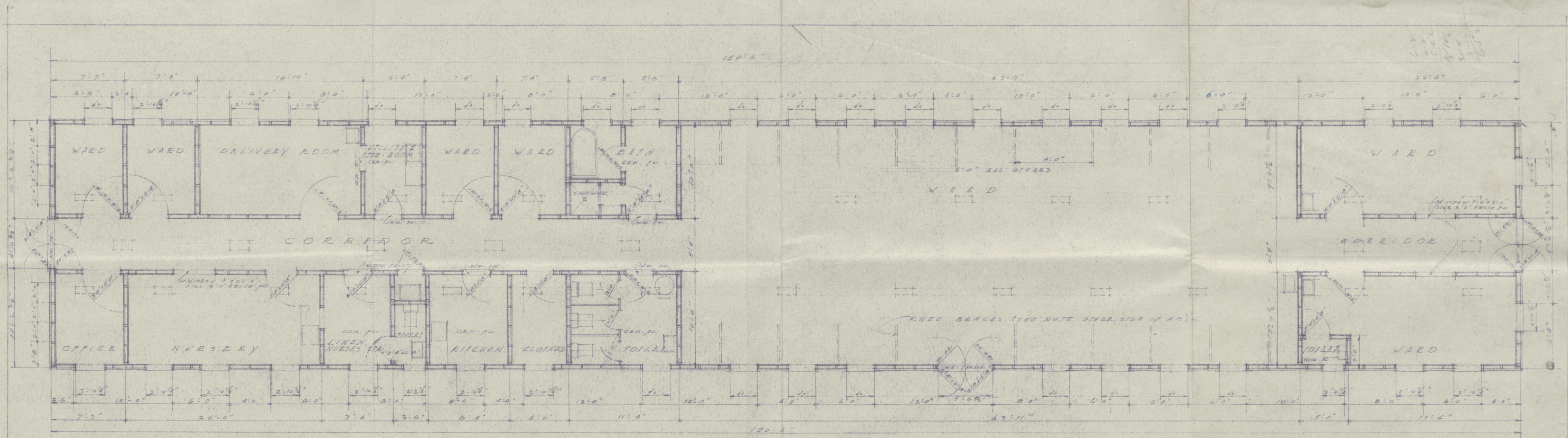
TALE LAKE, CALIFORNIA
EVACUEE RECEPTION CENTER
OUT-PATIENT BUILDING.

IN 1 SHEETS SCALE: AS SHOWN SHEET NO. 1

U. S. ENGINEER OFFICE, SAN FRANCISCO, CALIF. JULY 13, 1942
SUBMITTED APPROVAL RECOMMENDED APPROVED

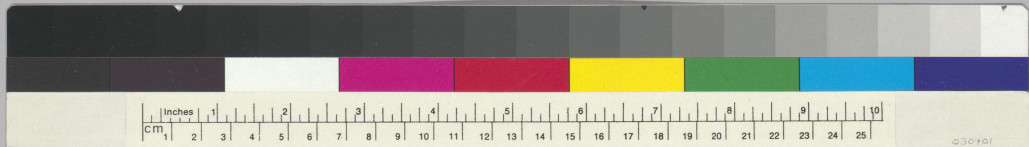
DESIGNED BY	LT COL. COMPS OF ENGINEERS	FILE	REV.	REMARKS
CHE. KID	37	16	64	
DR. W. A. T. N.	THATCHER A. T. N.			

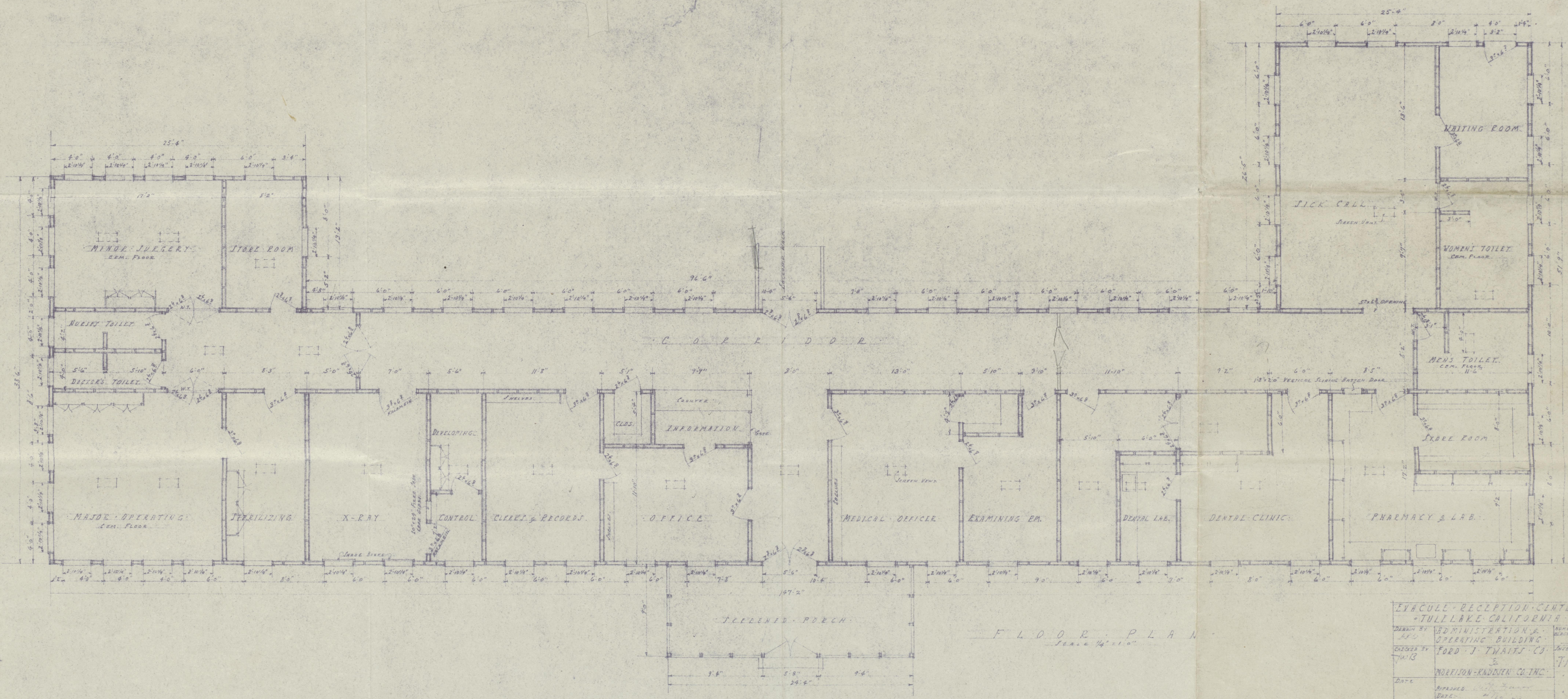
Copy: A. B. Carson, und.



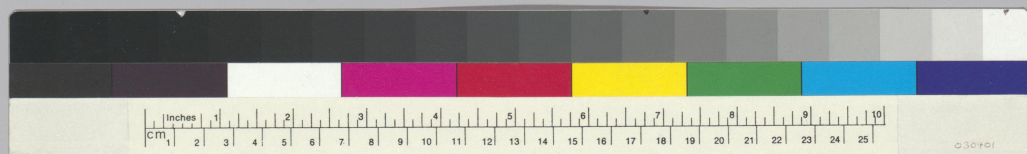
Ward
Obstetrics
Tulsa

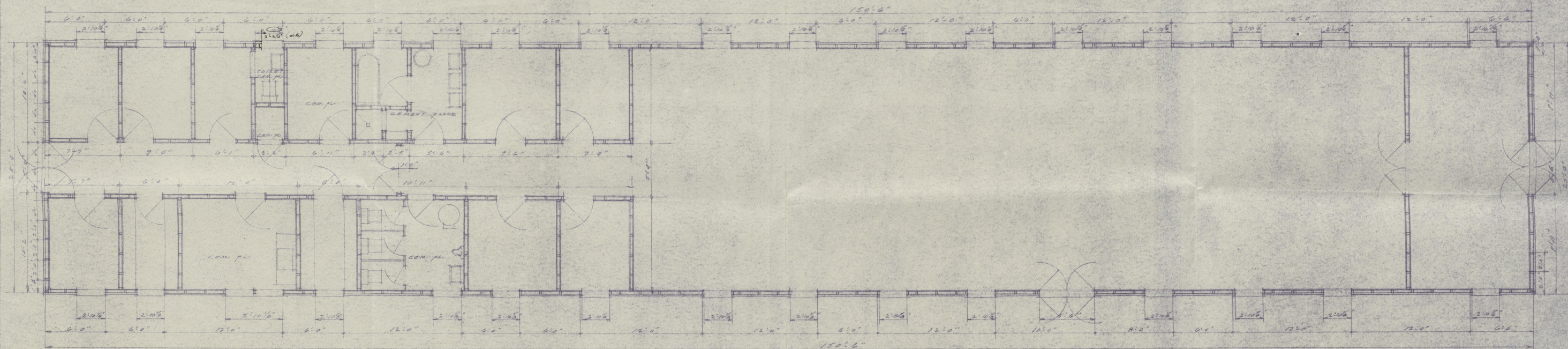
EVACUEE RECEPTION CENTER TULSA, CALIFORNIA			
DESIGN BY	OBSTETRICS WARD	NO. OF SHEET	1
CONSTRUCTED BY	FORD J. TRAVIS CO.	DATE	4-25-52
APPROVED BY	MORRISON-KNUDSEN CO. INC.	DATE	4-25-52





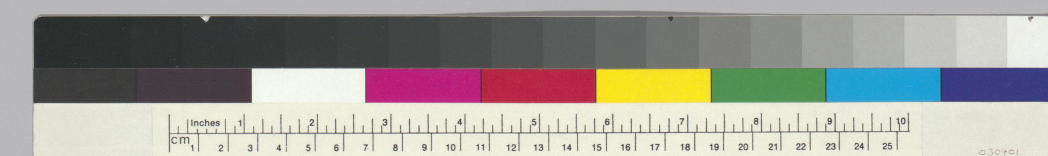
EVACUEE RECEPTION CENTER -TULARE, CALIFORNIA-			
DRAWN BY H.C.	ADMINISTRATION & OPERATING BUILDING	NUMBER OF SHEET 2	TMK 2 1
DESIGNED BY J.W.B.	FORD J. TRAVIS CO.	SHEET NO. 3	
DATE	MORTIMER-KANDLER CO. INC.	DATE	

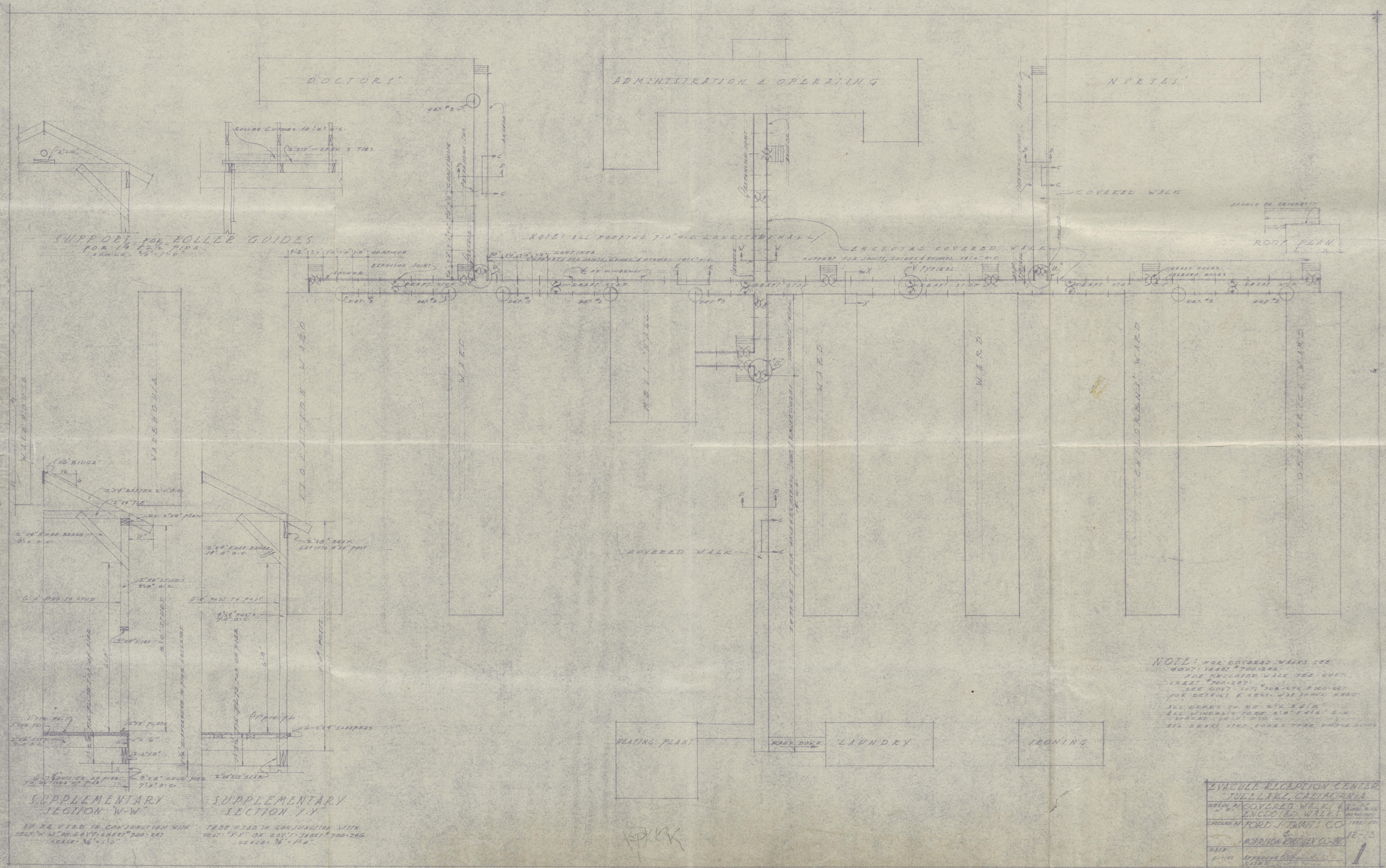




APPROVED FOR FOOTING LAYOUT ONLY
6-4-50

EVACUATION RECEPTION CENTER	
TULELAKE, CALIFORNIA	
DESIGNED BY	HOSPITAL
W. E.	WARD
CHECKED BY	FORD J. WAITS, CO.
DATE	APPROVED





NOTE: ALL FOOTING 7'-0" O.C. LONGITUDINALLY

ENCLOSED COVERED WALK

ROOF PLAN

NOTE: FOR COVERED WALKS SEE
GOVT. SHEET #700-286
FOR ENCLOSED WALK SEE GOVT.
SHEET #700-287
SEE GOVT. SHEET #700-288 & #700-289
FOR DETAILS OF STAIRS, ELEVATOR SHAFTS, ETC.
ALL DOORS TO BE 2'-0" X 6'-0"
ALL WINDOWS TO BE 3'-0" X 4'-0"
ALL DRIFT STOP DOORS TO BE 3'-0" X 4'-0"
ALL DRIFT STOP DOORS TO BE 3'-0" X 4'-0"

SUPPLEMENTARY
SECTION W-W

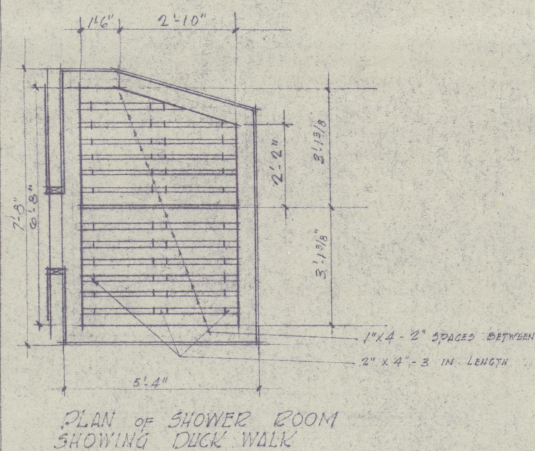
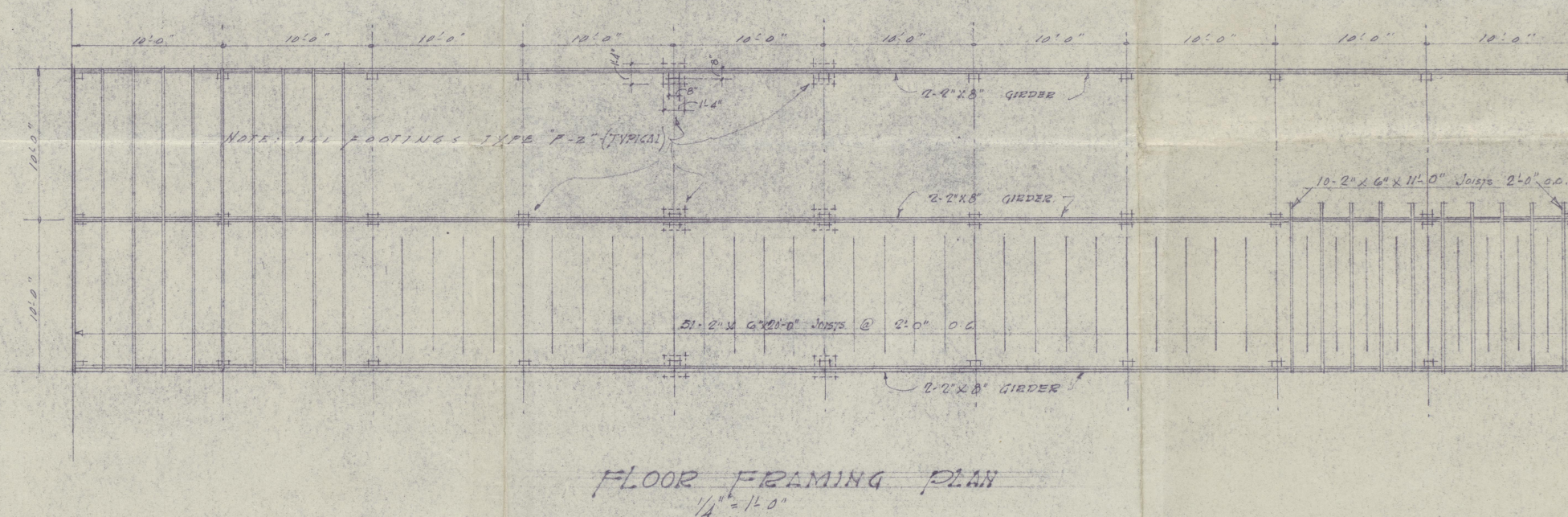
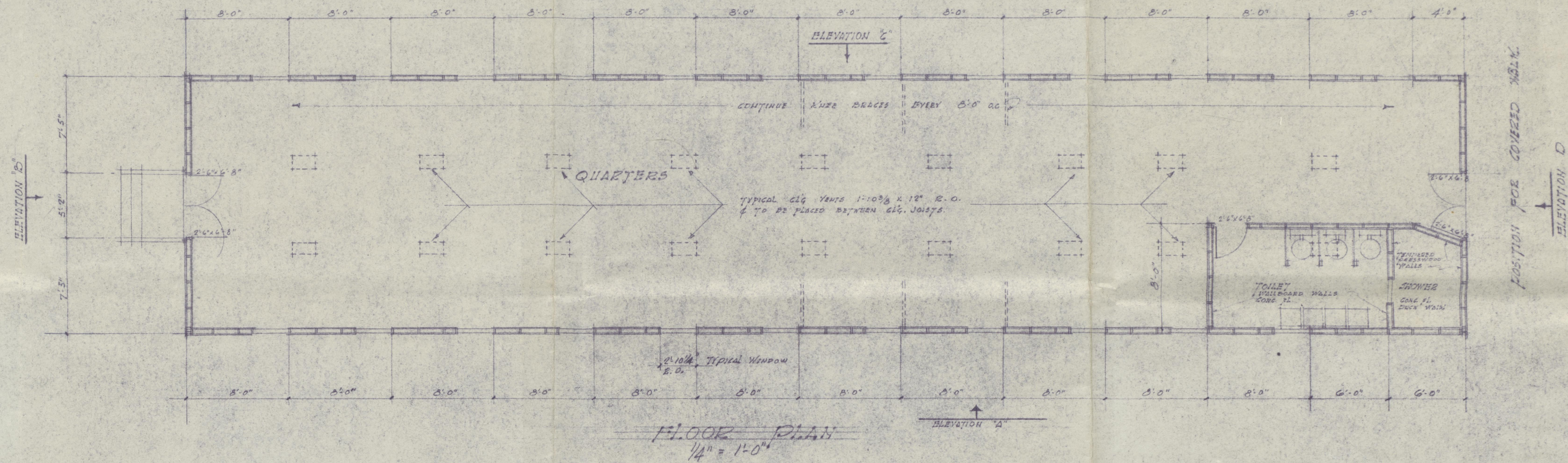
TO BE USED IN CONJUNCTION WITH
SHEET W-W ON GOVT. SHEET #700-286
SCALE: 1/4" = 1'-0"

SUPPLEMENTARY
SECTION Y-Y

TO BE USED IN CONJUNCTION WITH
SHEET Y-Y ON GOVT. SHEET #700-286
SCALE: 1/4" = 1'-0"

EVACUEE RECEPTION CENTER TULLAH, CALIFORNIA	
DESIGNED BY	COVERED WALKS
ENCLOSED WALKS	
DESIGNED BY	FORD J. TRAVIS CO.
CONSTRUCTED BY	MORRISON ENGINEERING CO.
DATE	12-13
APPROVED	1

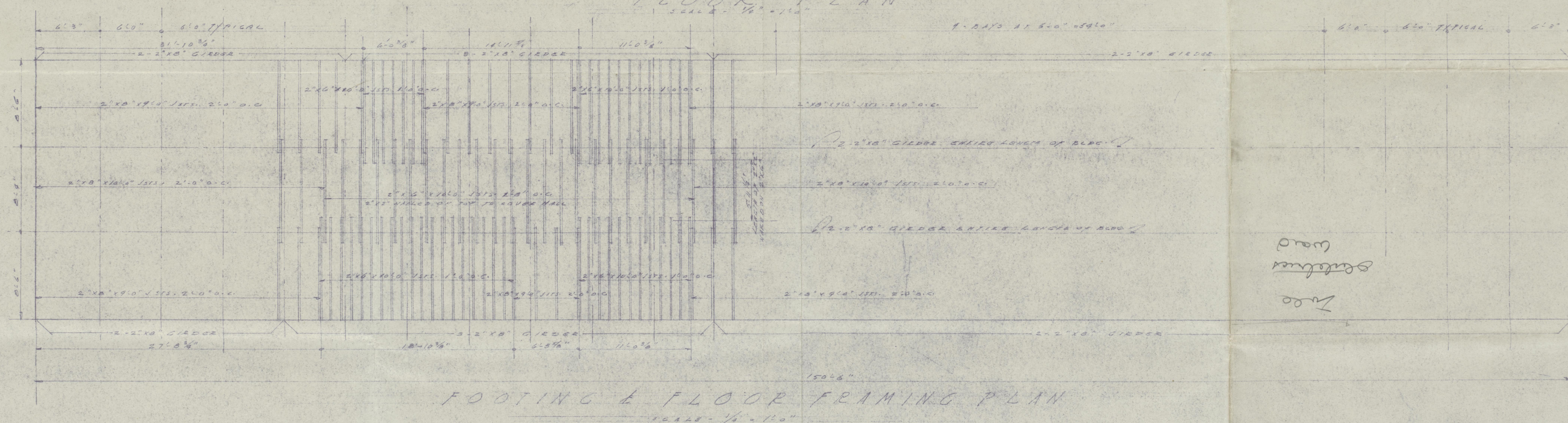
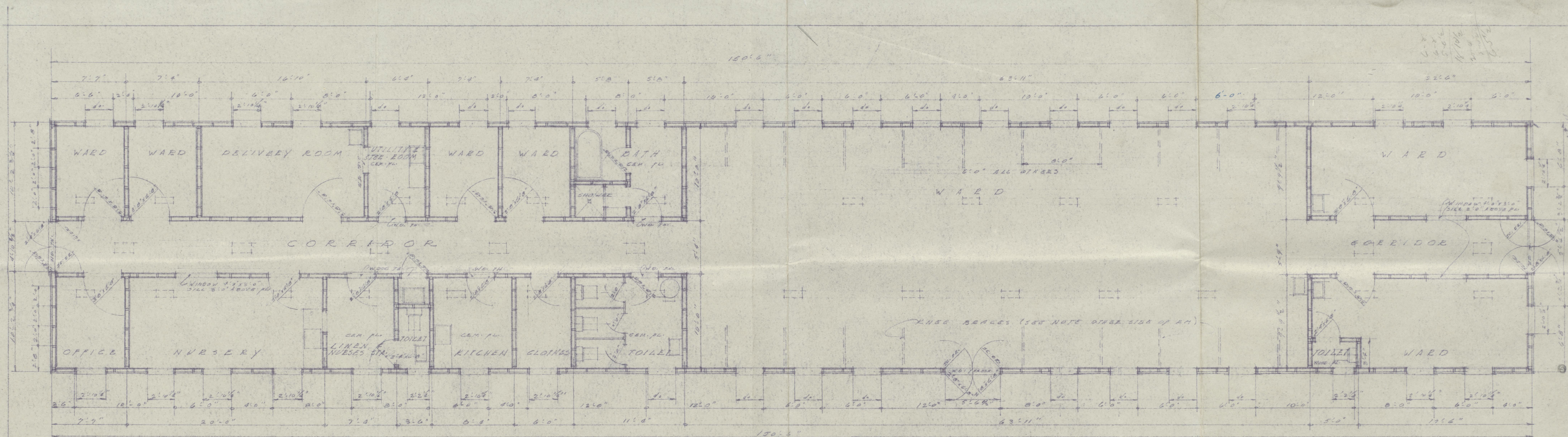




DOCTORS QUARTERS

NOTES: QUARTERS SIMILAR & TO BE REVERSED LONG WAY

HYUNDAI FREIGHT CENTER TULE LAKE, CALIFORNIA		
DESIGNED BY W. E. CHL	DOCTORS & NURSES QUARTERS	Revision Sheet 2
DRAWN BY J. J. B.	FORD & TOWNE CO. MOORESON-KNUDSEN CO. INC.	3-4
DATE: 4-26-62	APPROVAL DATE: 4/27/62	1



Ward
Sanctuary
Tulare

EVACUEE RECEPTION CENTER TULARE, CALIFORNIA		
DESIGNED BY	OBSTETRIC WARD	NO. 1
DRAWN BY	FORD J. TRAVIS CO.	CHECKED BY
DATE	4-28-52	APPROVED BY
NORTHON-ENGLISH CO. INC.		7