

M1.0511

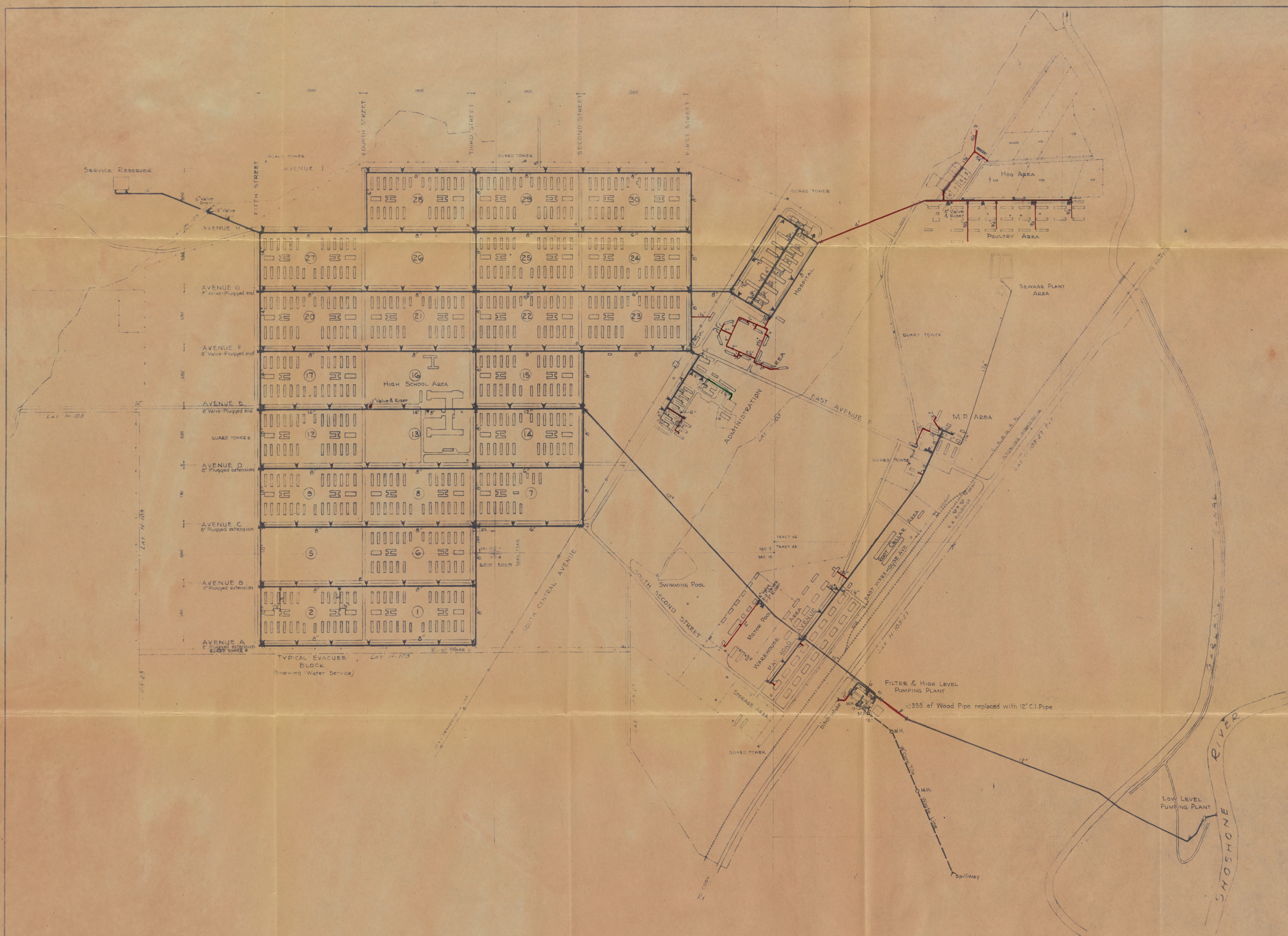
1 of 9

Operations

Architectural plans of the camp

67/14
C





- LEGEND**
- 12" Water Mains
 - 6" Water Service Lines
 - Fire hydrant and Valve
 - Tile waste line, M.H. Manhole
 - WRA Construction
 - D.F.C. Construction
- Note: That part of system not shown in color is U.S.E.D. construction.

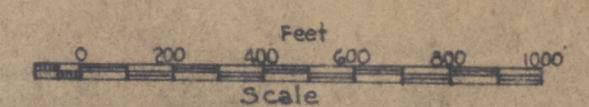
WAR RELOCATION AUTHORITY HEART MOUNTAIN RELOCATION PROJECT HEART MOUNTAIN, WYOMING			
WATER SUPPLY SYSTEM GENERAL PLAN			
SCALE AS SHOWN			
SUBMITTED..... 19.....	P. E. JOB NO.	P. E. FILE NO.	DATE Nov, 1945
SUBMITTED..... 19.....	JOB NO.	FILE NO.	SHEET
APPROVED..... 19.....	DESIGNED	DRAWN	CHECKED
PROJECT DIRECTOR			OF SHEETS



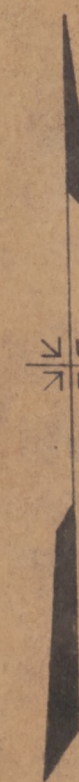
LEGEND









- Sewer Pipe
- Manhole
- WRA Construction
- DPC Construction

Note: That part of system not shown in color is USED construction.

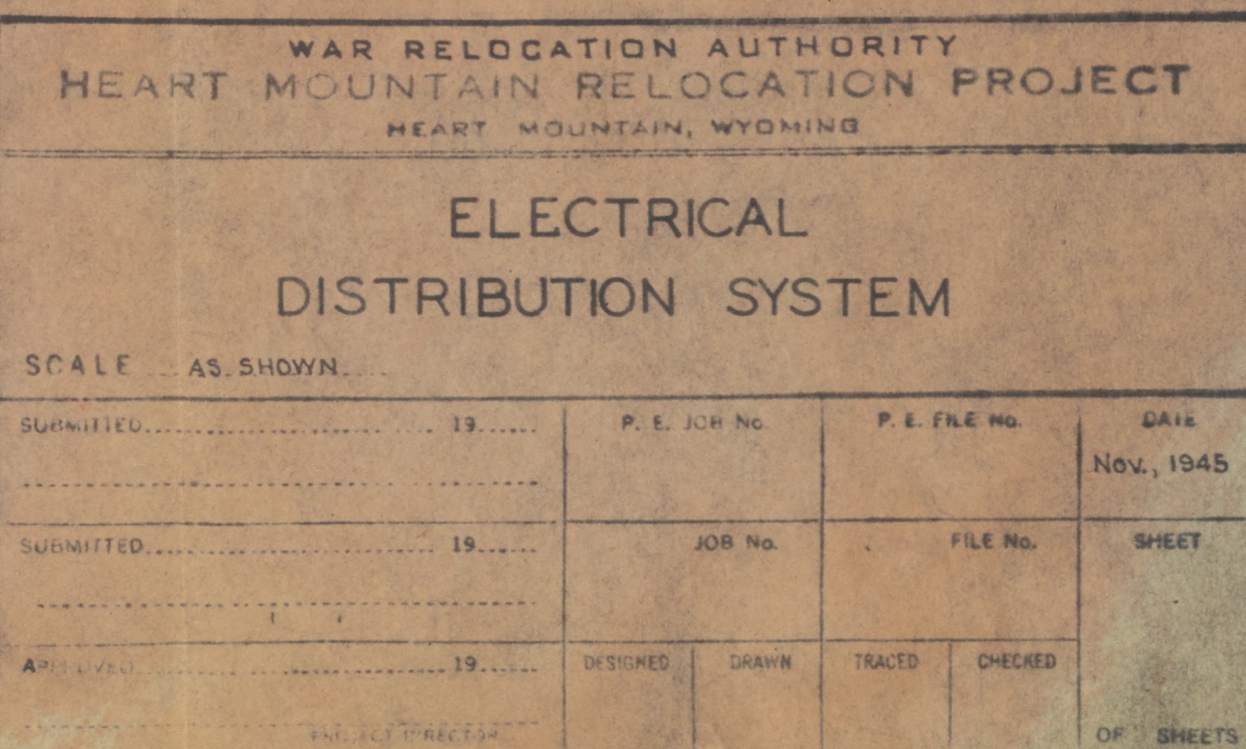


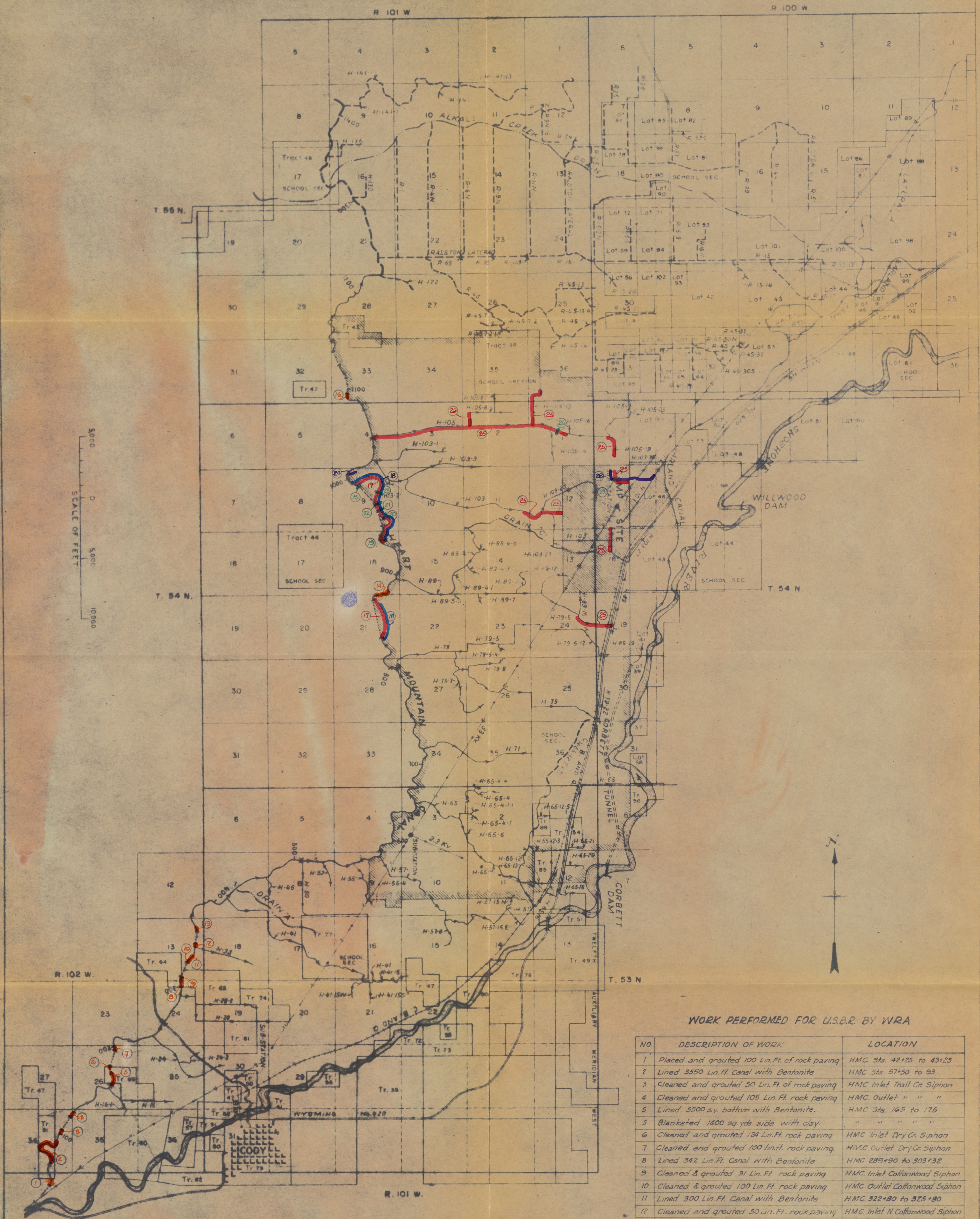
WAR RELOCATION AUTHORITY HEART MOUNTAIN RELOCATION PROJECT HEART MOUNTAIN, WYOMING				
SEWER SYSTEM GENERAL PLAN				
SCALE: AS SHOWN				
SUBMITTED..... 19.....	P. E. JOB NO.	P. E. FILE NO.	DATE Nov., 1945	
SUBMITTED..... 19.....	JOB NO.	FILE NO.	SHEET	
APPROVED..... 19.....	DESIGNED	DRAWN	TRACED	CHECKED
OF THREE				



	Primary, 4160V distribution system, bare copper
	Secondary distribution, copper except where noted.
	Transformer & Size, single phase except where noted
	No. & Size of wire, W.R.-weatherproof
	Transformer platform
	Overhead Guy & Down Guy
	WRA Construction
	DPC Construction

Note: That part of system not shown in color is U.S.E.D. construction





WORK PERFORMED FOR U.S.R. BY WRA

NO.	DESCRIPTION OF WORK	LOCATION
1	Placed and grouted 100 Lin. Ft. of rock paving	HMC Sta. 42+25 to 43+25
2	Lined 3550 Lin. Ft. Canal with Bentonite	HMC Sta. 57+50 to 93
3	Cleaned and grouted 50 Lin. Ft. of rock paving	HMC Inlet Trail Cr. Siphon
4	Cleaned and grouted 105 Lin. Ft. rock paving	HMC Outlet " " "
5	Lined 5500 sq. yds. bottom with Bentonite	HMC Sta. 165 to 175
6	Blanketed 1400 sq. yds. side with clay	" " " "
7	Cleaned and grouted 124 Lin. Ft. rock paving	HMC Inlet Dry Cr. Siphon
8	Cleaned and grouted 100 Lin. Ft. rock paving	HMC Outlet Dry Cr. Siphon
9	Lined 342 Lin. Ft. Canal with Bentonite	HMC 289+90 to 303+32
10	Cleaned & grouted 91 Lin. Ft. rock paving	HMC Inlet Cottonwood Siphon
11	Cleaned & grouted 100 Lin. Ft. rock paving	HMC Outlet Cottonwood Siphon
12	Lined 300 Lin. Ft. Canal with Bentonite	HMC 322+80 to 325+80
13	Cleaned and grouted 50 Lin. Ft. rock paving	HMC Inlet N. Cottonwood Siphon
14	Placed and grouted 50 Lin. Ft. rock paving	" " " "
15	Cleaned and grouted 148 Lin. Ft. rock paving	HMC Outlet N. Cottonwood Siphon
16	Processed 3,000 sq. yds. bottom with bentonite	HMC Sta. 377
17	Constructed Concrete Cutoff wall	HMC Outlet Buck Spgs. Cr. Siphon
18	Placed and grouted 100 Lin. Ft. rock paving	HMC Inlet Eaglesnest Cr. Siphon
19	Graded 2.5 miles roadway	Iron Cr. & Buck Spgs. Cr. Siphons
20	Graveled 2.25 miles roadway	" " " "
21	Installed 3-20"x85' wood pipe culverts	HMC, O&M Roads, Snakes Cr.
22	Installed 1-20"x90' " " "	HMC, O&M Road, Buck Spgs. Cr.
23	Installed 1-16"x28' " " "	HMC " " " "
24	Installed 1-20"x28' " " "	HMC " " " "
25	Installed 1-16"x31' " " "	HMC " " " "
26	Excavated Drainage Channel	HMC Sta. 1002+64
27	Graded 6 Miles O&M road	Lat 89, 103, 105
28	Installed 1-16"x31' wood pipe culvert	Lat. H-105-19 O&M Road Sta. 20
29	Installed 1-20"x34' & 1-20"x32' wood pipe culv	Lat. H-105-19 O&M Road, Drain
30	Excavated surface drain	Drain into Lat. H-103 Sta. 336+07

LEGEND

- Canal Lining - Grouted Paving & Bentonite Earth Mix
- Drain and Waste Ditch Construction
- Grading - Operation & Maintenance Roads - Canals & Laterals
- Graveling - Operation & Maintenance Roads - Canals & Laterals
- Structures - Concrete & Timber

EXPLANATION

- Ared Boundary (As amended by order of May 21, 1943)
- Existing Canal
- Existing Lateral
- Drain Location
- Canal Location
- Lateral Location

REV. 12-29-42 2-11-43 6-14-63

5-Y-55428

DESIGNED BY: K.E.H.

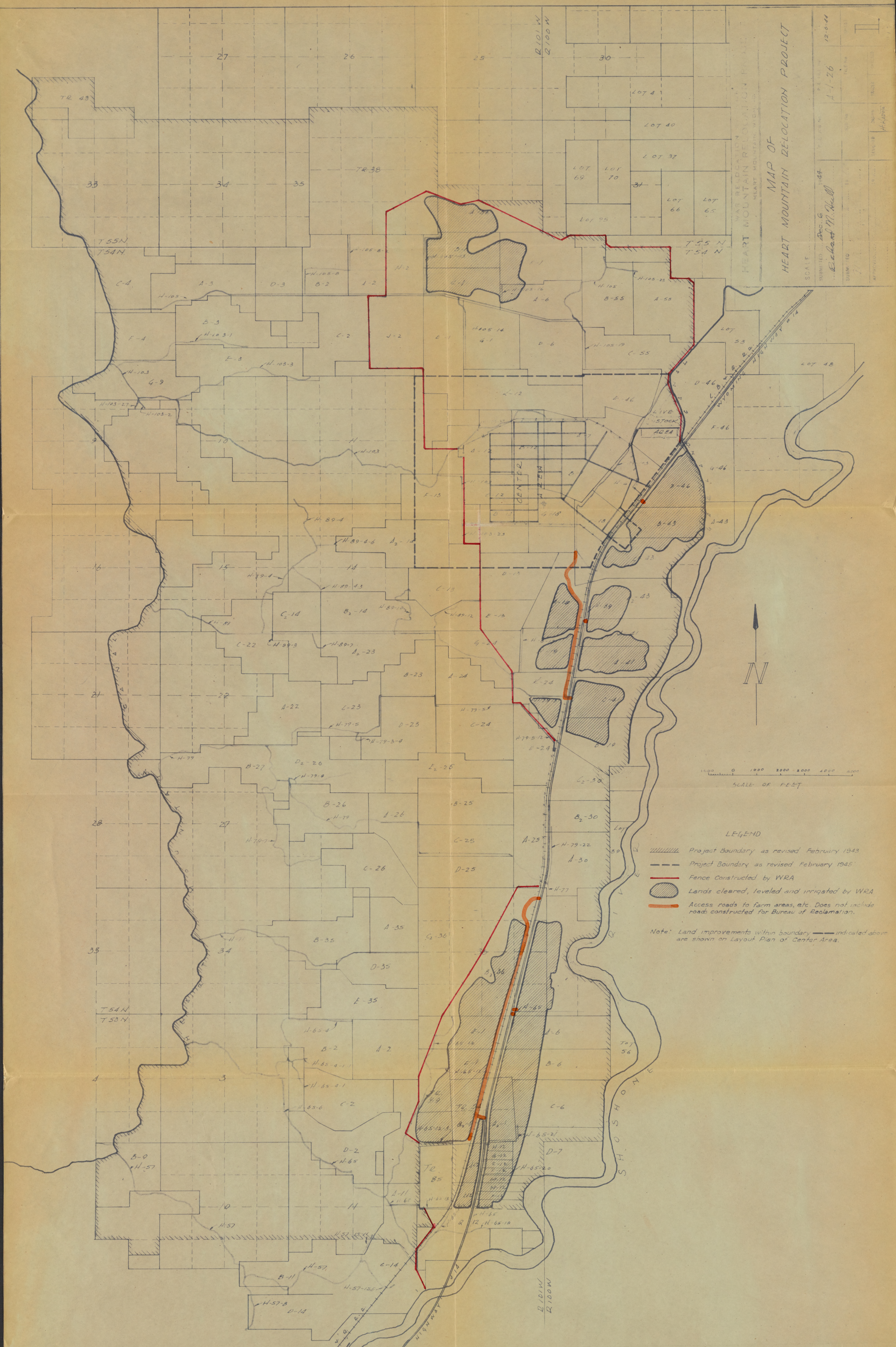
TRACED BY: C.M.H.

CHECKED BY: A.H.

APPROVED BY: J.E.H.

DATE: 12-29-42



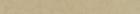
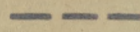

UNITED STATES
DEPARTMENT OF THE INTERIOR
BUREAU OF RECLAMATION
SHOSHONE PROJECT - WYOMING
HEART MOUNTAIN DIVISION
JAPANESE RELOCATION CENTER
GENERAL MAP



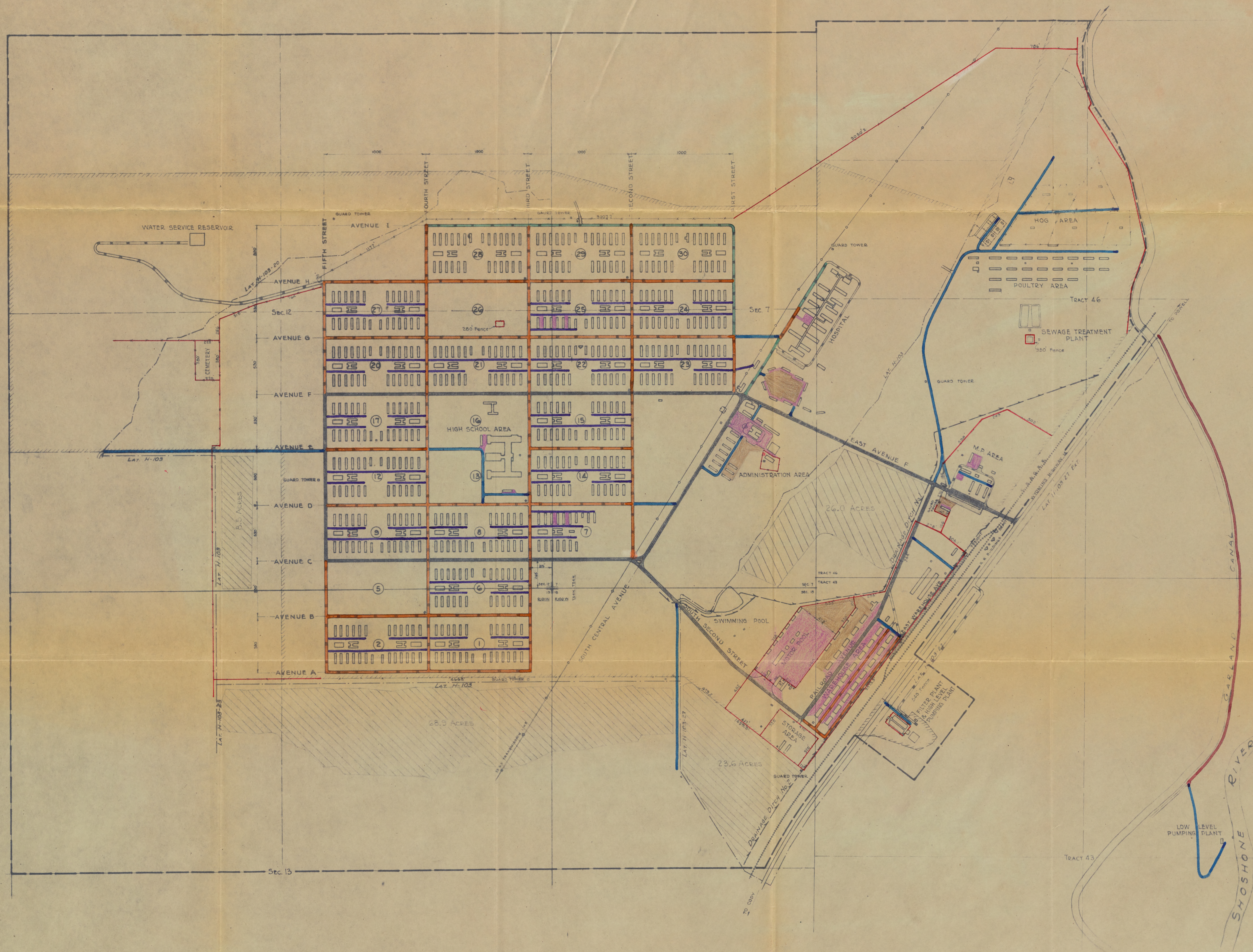
1000 0 1000 2000 3000 4000 5000

SCALE OF FEET

LEGEND

-  Project Boundary as revised February 1943
 Project Boundary as revised February 1945
 Fence Constructed by WRA
 Lands cleared, leveled and irrigated by WRA
 Access roads to farm areas, etc. Does not include roads constructed for Bureau of Reclamation.

Note: Land improvements within boundary ——— indicated above
are shown on Layout Plan of Center Area.



- LEGEND**
- LAND IMPROVEMENT AND FENCES - ACCOUNT 34**
- Land Improvements
 - Fences Constructed by WRA
- ROADS AND BRIDGES - ACCOUNT 37**
- Parking & Service Area - Stabilized Gravel, Constructed by U.S.E.D.
 - Parking & Service Areas, Unsurfaced, Constructed by U.S.E.D.
 - 22 Primary, High Type Bituminous Roads, Constructed by U.S.E.D.
 - 16 Secondary Low Type Bituminous Roads, Constructed by U.S.E.D.
 - U.S.E.D. Constructed Roads, Reconstructed and Gravel Surfaced, by WRA
 - U.S.E.D. Constructed Roads, Reconstructed by WRA and Unsurfaced
 - 12 Gravel Surfaced Roads Constructed by WRA
 - Graded Earth Roads Unsurfaced, Constructed by WRA
 - 12 Alley Ways Graded and Gravel Surfaced by WRA
 - Non-Project Roads, Gravel Surfaced by WRA
 - Parking & Service Areas, Variable Width, Graded and Gravel Surfaced, by WRA
 - Parking & Service Areas, Variable Width, Constructed by WRA and Unsurfaced
- IRRIGATION AND DRAINAGE - ACCOUNT 38**
- Drainage Ditches
- BOUNDARIES**
- Present Project Boundary
 - Proposed New Project Boundary

WAR RELOCATION AUTHORITY
HEART MOUNTAIN RELOCATION PROJECT
HEART MOUNTAIN, WYOMING

LAYOUT PLAN

SCALE

SUBMITTED	19	P. E. JOB No.	P. E. FILE No.	DATE
				Dec. 1945
SUBMITTED	19	JOB No.	FILE No.	SHEET
APPROVED	19	DESIGNED	DRAWN	TRACED
				CHECKED

WILLIAM S. HILL