

K 4.37:2

2 of 3

1944

67/14  
C



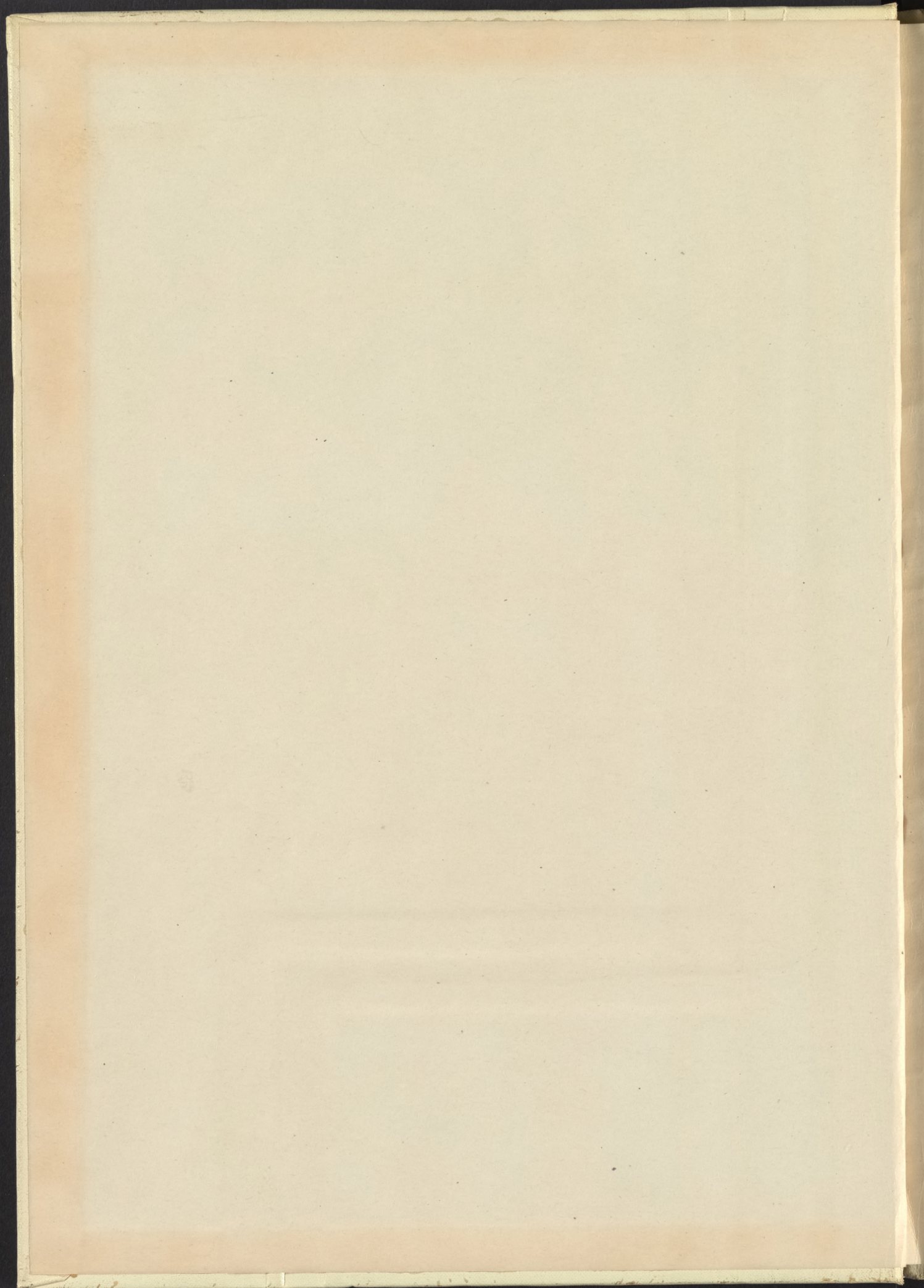
RIVOLLET

74.3A



1944







K 4.39





CANAL  
HIGH

1914  
RIVER  
ARIZONA



DEFENSE

# RIVULET

CANAL  
HIGH  
SCHOOL

19 RIVERS 44  
ARIZONA

*U.S. War Relocation Authority*



RK



ARIZONA  
RIVERS

SCHOOL

HIGH  
CANAL

RIVER







PLEDGE  
ALLEGIANCE

TO THE FLAG OF  
THE UNITED STATES

★ OF AMERICA ★





**I**

**PLEDGE**

**ALLEGIANCE**

**TO THE FLAG OF  
THE UNITED STATES**



**OF AMERICA**





# DEDICATION





DEDICATION





FORWARD

TO THE UNLIMITED  
SCHOOL MAY SEEM TO BE  
JUST A BUILDING WITH  
TABLES AND CHAIRS BUT  
TO US IT HAS BEEN A SE-  
CLUDED WORLD OF WORK  
AND OF PLEASURE  
THE RIVOLET HAS  
TRIED TO RECAPTURE A  
PORTION OF THAT HAPPY-  
NESS SO LET US REM-  
INCE AMONG THESE  
FACES AND BRING BACK  
THOSE MEMORIES OF JOY-  
OUS YESTERDAY



## ★ FOREWARD ★

TO THE UNINITIATED SCHOOL MAY SEEM TO BE JUST A BUILDING WITH TABLES AND CHAIRS, BUT TO US IT HAS BEEN A SECLUDED WORLD OF WORK AND OF PLEASURE.

THE RIVULET HAS TRIED TO RECAPTURE A PORTION OF THAT HAPPINESS SO LET US REMINISCE AMONG THESE PAGES AND BRING BACK THOSE MEMORIES OF JOYOUS YESTERDAY.



# CONTENTS

★ ADMINISTRATION

★ CLASSES

★ SERVICE *and* LIFE

★ ACTIVITIES

★ SPORTS

★ OUR COMMUNITY





# **AND TO THE REPUBLIC**

R. L.  
Proje



# ADMINISTRATION

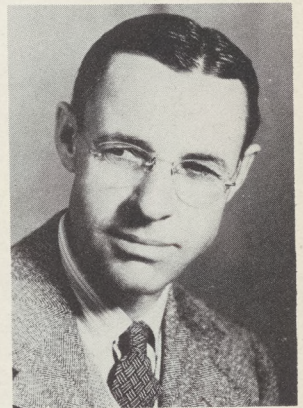
---

---

---



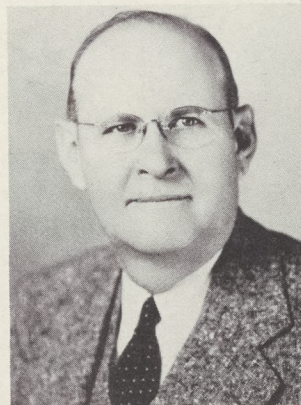
R. L. H. BENNETT  
Project Director



MR. W. F. MILLER  
Principal Butte High  
School



MR. W. C. SAWYER  
Superintendent of  
Education



DR. G. P. YOUNG  
Assistant Superintendent  
of Education

MR. W. H. WOLTER  
Community Management





# P.T.A.



Standing: Mr. G. Onoda, treasurer; Mrs. J. P. McVey, advisor; Mr. E. Kasugai, interpreter.

Sitting: Miss Segimoto, secretary; Mr. K. Kawahara, president; Miss C. Lancaster, advisor. (Not pictured) Mrs. G. Sakai, vice president.

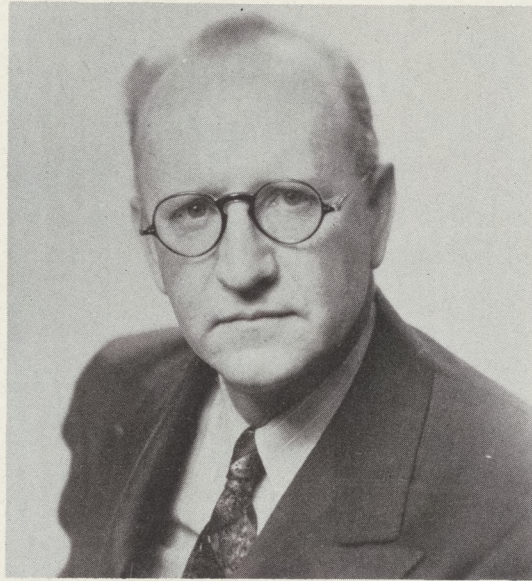
The Parent-Teachers Association of Canal continued its splendid work throughout this school year. Their efforts were directed to the cause for which this association was organized: to bring a better understanding between teachers and parents and to secure the highest advantage of education for every student.

They strove to make the school a pleasant place for the students. In the line of social activities, they presented at Christmas a most enjoyable and unforgettable party.

Each and every student of Canal High School was aware of their guiding hand.



# *Our Principal*



J. P. McVEY

Canal High School has, in the short space of two years, developed into what we believe to be a school worthy of high rank. Examination of this book will disclose the extent of our extra-curricular program and we can also claim progress in the academic fields. A qualified and experienced faculty insists upon giving a large percentage of the above average grades which have been justified upon examination into accomplishments. Hard study and honest effort are the rule and not the exception.

Commencement has a deep significance for our graduates. They will truly enter into a new life, for Canal High School educates away from its community into the larger community of the nation. This community is prepared and is maintained as a point of departure, a place of transition.

The dedication of this book to the pledge of allegiance to the Flag of America is a sincere expression of the deep affection these boys and girls have for the nation. They were born here and this is the "land of home" to them. This land of ours that has taken all of us, stemming from many nations, and has amalgamated us into a united people will also take these. This great nation will provide opportunity for them to work and achieve.



# Faculty



MISS C. LANCASTER  
English



MISS M. HAGAN  
English  
Social Science  
Girls' Physical  
Education



ASSISTANT MISS K.  
HIRASUMA  
English  
Social Science



ASSISTANT MISS J.  
SEIJI  
Girls' Physical  
Education



MR. W. HIGGINS  
Social Science  
Music



ASSISTANT MISS A.  
SASAKI  
Music



MISS E. ERWIN  
Social Science



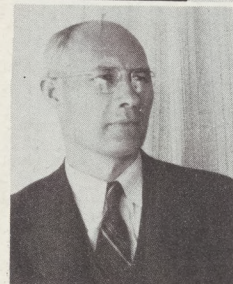
MRS. L. PEDDY  
Social Science  
Home Economics



ASSISTANT MISS S.  
UDA  
Home Economics



MRS. H. YEATON  
English  
Spanish

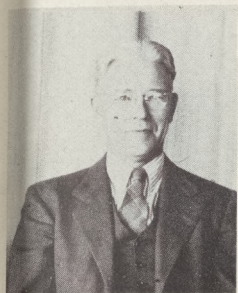


MR. M. DAVIS  
Mathematics

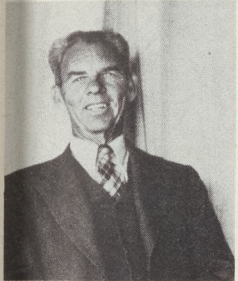


MR. G. ONODA  
Mathematics  
Science





MR. M. McMILLAN  
Chemistry  
Science



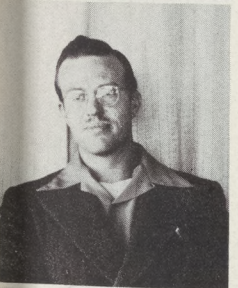
MR. L. GEORGE  
Agriculture  
Boys' Physical  
Education



MISS D. TAYLOR  
Commercial



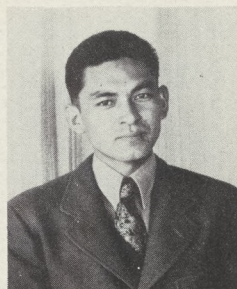
ASSISTANT MISS M.  
SHIGYO  
Commercial



MR. R. SLATE  
Art



ASSISTANT MISS A.  
OHMAYE  
Art



MR. A. SHIMIZU  
Shop



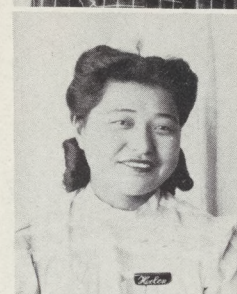
MISS H. TANAKA  
Librarian



MISS M. OTA  
Librarian



MISS M. ARITA  
Librarian

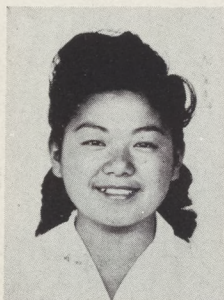


MISS M. SUGAI  
Librarian

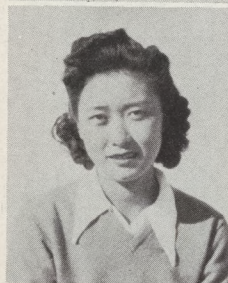


MISS M. HUGHES  
Girls' Physical  
Education





ASSISTANT MISS H.  
ISHIMINE  
Girls' Physical  
Education



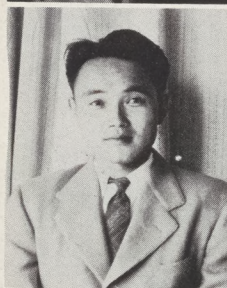
ASSISTANT MISS M.  
HONDA  
Girls' Physical  
Education



MR. J. STRINGER  
Mathematics  
Boys' Physical  
Education



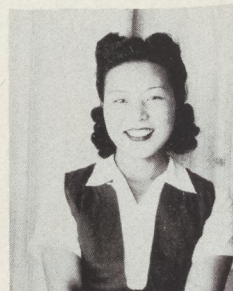
MR. J. BRUNSTEIN  
Mathematics



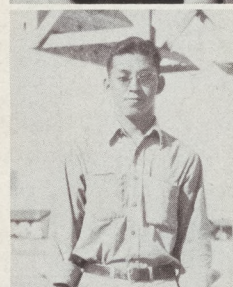
MR. K. HIRAI  
Mathematics



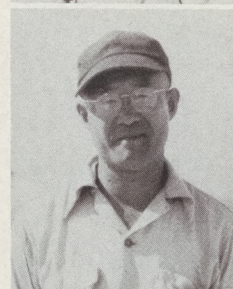
ASSISTANT MISS B.  
TOTSUBO  
English  
(Not Pictured)



ASSISTANT MISS S.  
OMOTO  
Home Economics



MR. G. OKAZAKI  
Assistant Boys'  
Physical Education



MR. G. MAEDA  
Boys' Physical  
Education



MR. F. MOUNTAIN  
Music

(Not Pictured)

MISS F. AIKIYAMA  
English

ASSISTANT MISS R.  
HAMATAKA  
Art

MISS S. MATSUMOTO  
Commercial

MISS S. NAKATA  
Commercial

ASSISTANT MISS G.  
NAKAGAWA  
Girls' Physical  
Education

MR. C. TYRELL  
Agriculture  
Biology



# Office



HELEN  
TANIGAWA



MR. J. P. McVEY



TAKAYO  
KOBAYASHI



FUMIYE  
HARADA

YUKO  
YOSHIMURA  
(Not Pictured)

TOMIYO  
HAYASHI



ORIGINAL  
STAFF

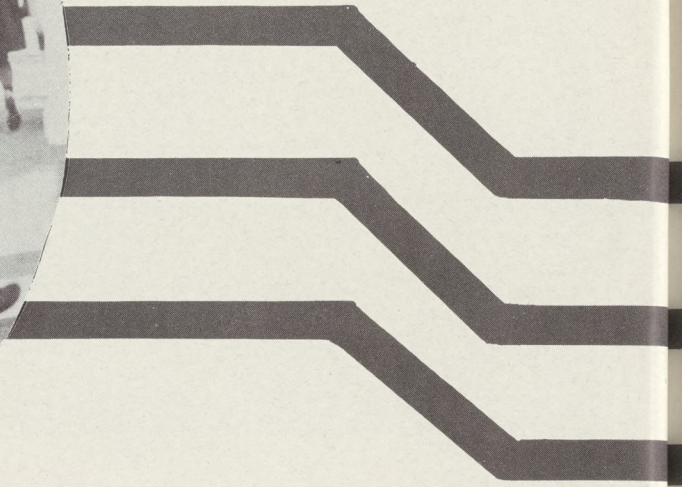
Rear: Y. Hayashi,  
B. J. Okubo,  
Y. Yoshimura



Front: T. Hayashi,  
R. Kimoto, M. Gamow,  
L. Fujimoto, M. Fuji-  
moto, Y. Gamow.







**FOR  
WHICH IT STANDS**



# CLASSES

---

---

---







#### OFFICERS AND ADVISORS

Standing: Miss J. Seiji, T. Totsubo, yell leader; Mr. M. Davis, Mrs. L. Peddy, Mr. G. Onoda, E. Shimizu, class representative.

Sitting: T. Nagata, treasurer; G. Fujimoto, vice-president; F. Wanatabe, president; E. Tara, secretary.

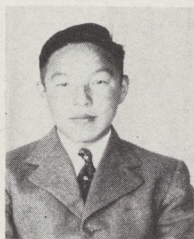
#### SENIORS

After traveling through four years of high school, the class of '44 is ready to step out to meet the world and its problems. Although some may take one road, some another; none will forget the sorrows and joys of the days they spent at Canal High School.

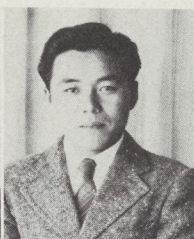
In 1942 they entered Canal High School as Juniors. The outstanding event of that school year was the Junior-Senior Prom.

The Seniors have had class parties, hikes, and carried on the various duties of the ruling class. The seniors regret leaving Canal High School, but they are happy to pass the superior office to the Junior Class, wishing them the best of luck.

To their advisors, Mrs. Lucille Peddy, Mrs. George Onoda, Mr. Mason Davis, and Miss Julia Seiji the Seniors express sincerest thanks for helping to make this year a success.



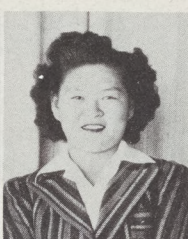
Wasco  
Ando



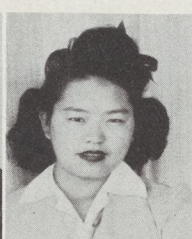
Kenneth  
K. Oaki



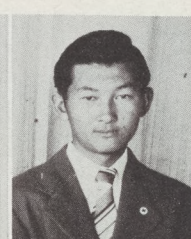
Yoshiko  
Araki



Hazel  
Bungo

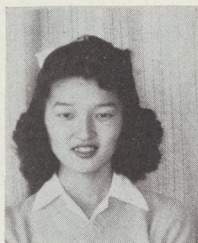


Misako  
Butsumyo

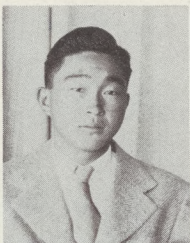


Hiroshi  
Deguchi

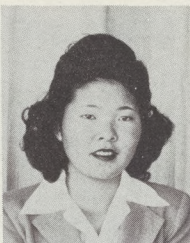




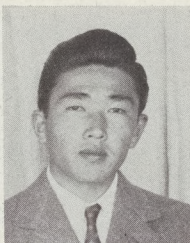
Kimi  
Doi



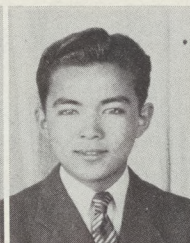
Minoru  
Doi



Yoshiko  
Fujikawa



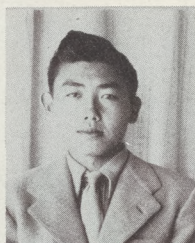
Edwin  
Fujimoto



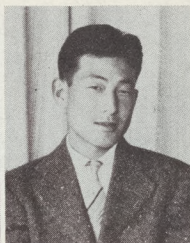
George  
Fujimoto



Helen  
Fujishige



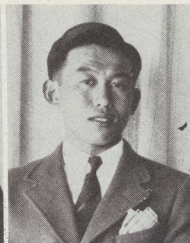
Kenneth Kenji  
Fukuzawa



Sam S.  
Furukawa



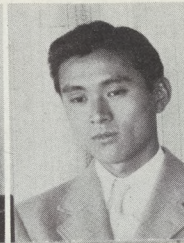
Kimiko  
Hamada



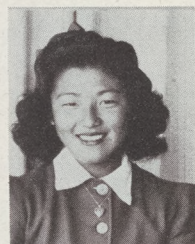
Isao Ace  
Handa



Fumiye  
Harada



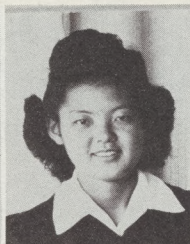
Tak  
Hashimura



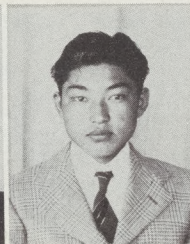
Evelyn Tokie  
Hatanaka



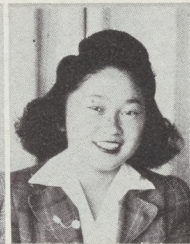
Jane  
Hayashi



Shizuko  
Hayano



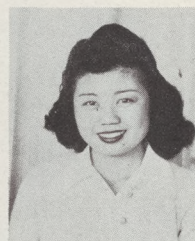
Hiroshi  
Hirabayashi



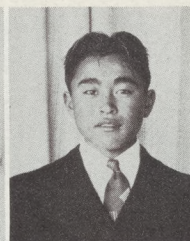
Yasuko  
Hirose



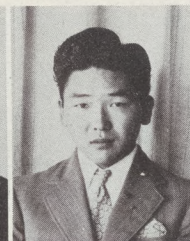
Mary  
Ichihana



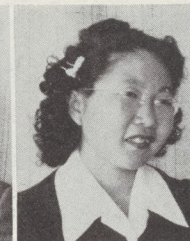
Mary Ann  
K. Ii



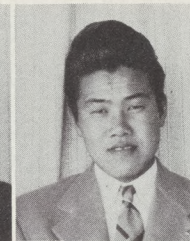
Harry  
Imura



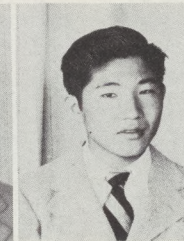
Edward A.  
Inouye



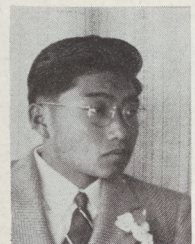
Naoko  
Ishihara



Hideo  
Iwanaga



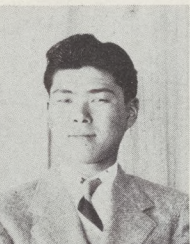
Toyoki  
Izuno



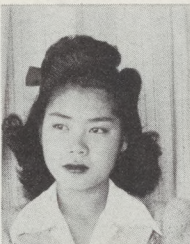
Frank Mitsuo  
Kaneko



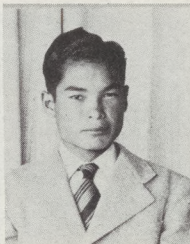
Kimi  
Katayama



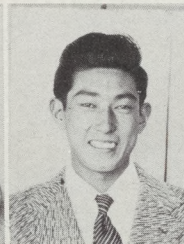
Tadashi  
Katayama



Alice A.  
Kawada

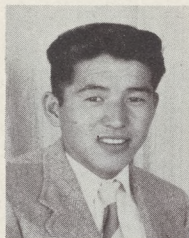


John K.  
Kimura

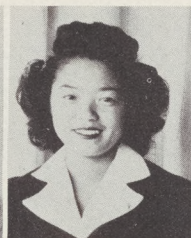


Roy Takeo  
Kooda

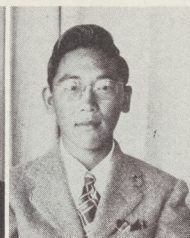




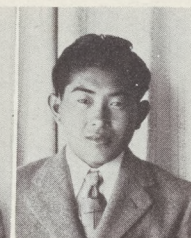
Teru T.  
Komoto



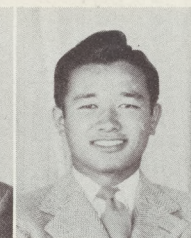
Yvonne Mutsue  
Kubota



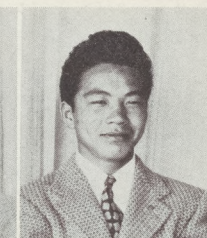
Harry  
Kuramoto



Masao  
Masumoto



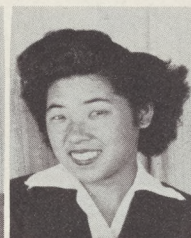
Handy Hiroshi  
Matsuda



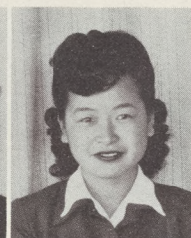
George Kazuo  
Matsuda



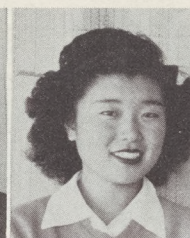
Miyoko  
Matsuda



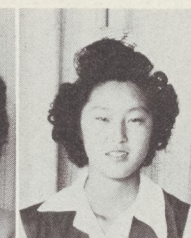
Bessie  
Matsumoto



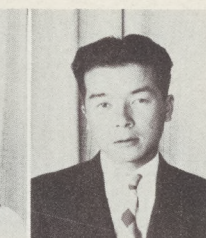
Lena  
Matsunaga



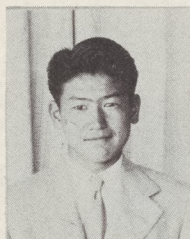
Masako  
Misaki



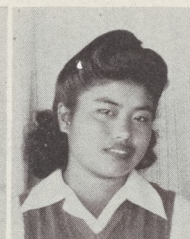
Aiko  
Miyai



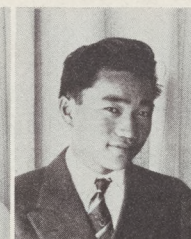
Kiyoshi  
Mizumoto



Hirishi  
Murayama



Toyoko  
Murayama



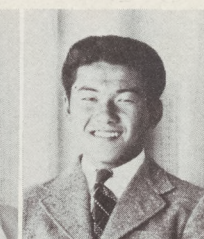
Tom T.  
Nagata



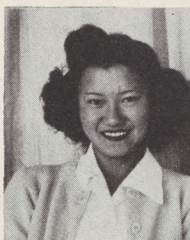
Ikuko  
Nakagawa



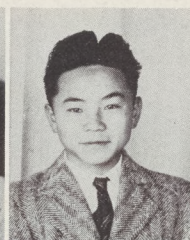
Yayeko  
Nishihara



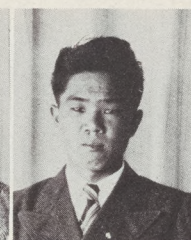
Mas  
Ohara



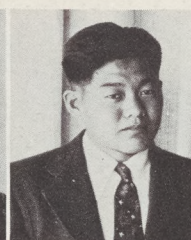
Mari  
Oino



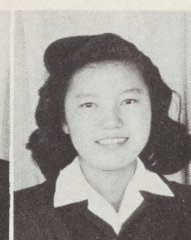
Mich  
Oka



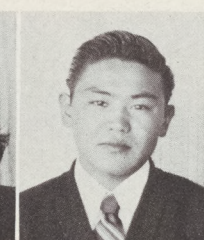
James Kazuo  
Omori



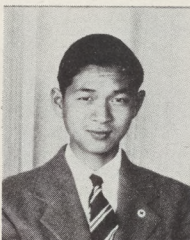
Tommy  
Otani



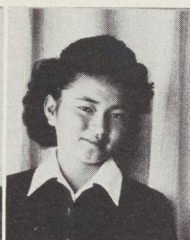
Yuico  
Otani



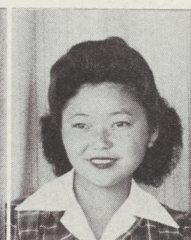
James Y.  
Sakamoto



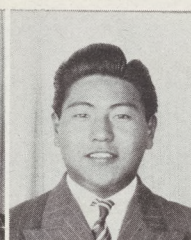
Andrew  
Segimoto



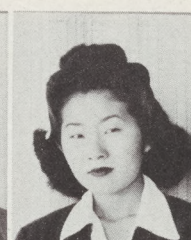
Eloise  
Shimizu



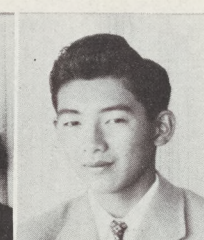
Mae  
Suechika



Kenji  
Sugai



Marian  
Tagami

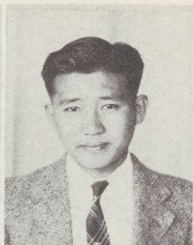


Harry H.  
Takata

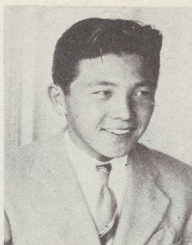




Suyeko Janice  
Takata



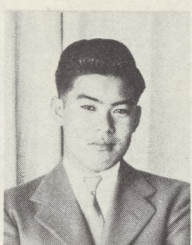
Mitsuru  
Takayama



Jimmy  
Takemori



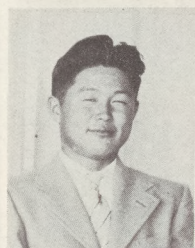
Frank S.  
Takeuchi



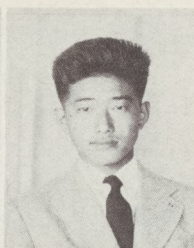
Tom Tamotsu  
Tanouye



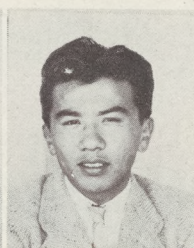
Emiko  
Tara



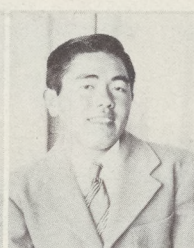
Masateru  
Terada



Frank  
Togami



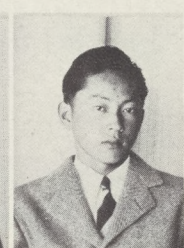
Jack  
Totsubo



Kazuo  
Tsuboi



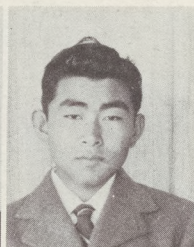
Emiko  
Tsugawa



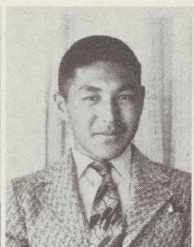
Jim  
Tsuji



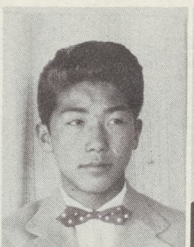
Lily T.  
Umeda



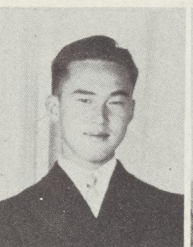
S. Frank  
Watanabe



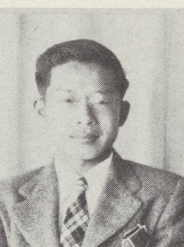
Shoji  
Yamada



Jimmy  
Yamaguchi



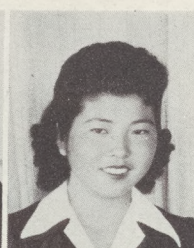
William S.  
Yamaguchi



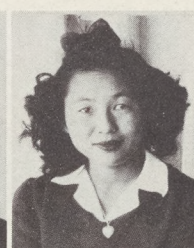
Eiji  
Yamamoto



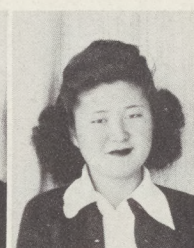
Sadako  
Yamamoto



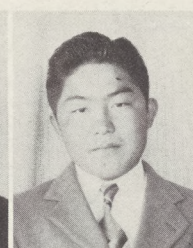
Teruko  
Yamashita



Masayo  
Yasui



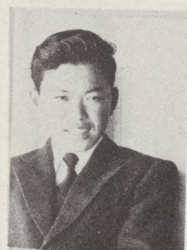
Gladys  
Yoneda



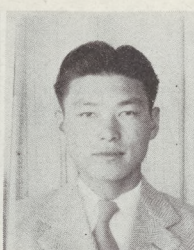
Nob  
Yoshida



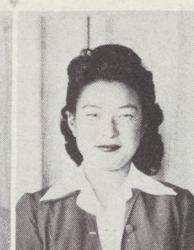
Hisaye Elizabeth  
Yoshihara



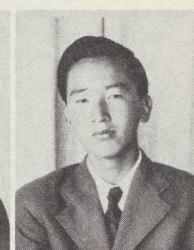
George  
Yoshima



Kazumi  
Yoshimoto



Youko  
Yoshimura



Billy  
Yoshino

(Not Pictured)  
Akira Matsuo  
Hisao Shimada  
Harry Waki





#### OFFICERS AND ADVISORS

Standing: S. Yomogida, vice-president; T. Nishihara, yell leader; Mr. R. Slate, L. Kawahara, president; J. Mori, class representative.

Sitting: Miss D. Taylor, B. K. Kobayashi, yell leader; A. Kouno, treasurer; N. Yasumoto, secretary; Miss C. Lancaster.

## Juniors

At their first meeting September 13, 1943, the Juniors were well on their way toward another active year. At this meeting an election of officers was held and socials for the coming year were planned.

The highlights of the year were the Junior assembly, the autumn, the mid-winter and spring socials held respectively in November, February, and May. The activities were brought to a climax with the most important and memorable event of the year, the Junior-Senior Banquet-Prom held in May.

Much credit for a successful year was due to the Junior advisors, Miss Cecile Lancaster, Miss Della Taylor, Mr. Robert Slate and Miss Mary Hughes.

Rear: B. Kobayashi, K. Kotsubo, G. Kawahara, T. Kawano, S. Furukawa, M. Ahara, J. Adachi, M. Itomura, J. Doi.

Center: F. Kawata, M. Kido, M. Fujimoto, M. Egusa, K. Hamaguchi, S. Hashimoto, R. Kasugai, K. Deguchi.

Front: A. Kouno, T. Arakaki, T. Mori, A. Arakaki, M. Hara, A. Kawauchi, T. Hatta, K. Handa.







Rear: Y. Okamoto, K. Tagawa, N. Doi, R. Sakamoto, H. Murakami, C. Sugimoto, J. Seiji, K. Murakami, B. Nakayama.

Center: J. Nishioka, M. Nakahara, H. Nakagawa, T. Otani, M. Shiine, S. Morimasu, H. Sasaki, M. Shi-moide, K. Nojiri.

Front: M. Sakuragi, M. Muto, A. Nishina, R. Nakatsuka, J. Sakai, T. Osumi, Y. Takano, F. Sakuragi.

Rear: H. Hirakawa, S. Matsumoto, K. Imada, L. Kawahara, S. Hikido, H. Hiromoto, F. Katayama.

Center: N. Toda, Y. Tosubo, A. Masumoto, B. Koda, K. Asamoto, M. Yamamoto, T. Yasui.

Front: N. Yasumoto, J. Nozumi, B. Yoshikawa, J. Yoshimi, M. Tsugawa, T. Uchiyama, M. Tanaka.



Rear: B. Ehara, Y. Waki, M. Takahashi, H. Ishii, Y. Sano, G. Masaki, J. Nishi, S. Yamada.

Center: K. Nishimoto, S. Yomgida, T. Nishihara, K. Ogawa, J. Yamamoto, J. Mori, Y. Yamada, G. Yaji.

Front: M. Murata, T. Matsuura, H. Murata, H. Sakata, G. Sugimoto, F. Nakanishi, G. Murakami, M. Okino, T. Ryono.







#### OFFICERS AND ADVISORS

Standing: S. Tsufura, vice-president; Mr. K. Hirai, Mr. Millan, C. Torii, class representative.

Sitting: N. Isimine, yell leader; S. Mizufune, secretary; Kawahara, president; Miss M. Hagan, L. Tanigawa, treasurer.

## *Sophomores*

The Sophomore class organized by holding a meeting during the first week of the school year at which time they elected officers and made plans for the coming year.

The first big event was a class party, held on December 3, 1943, at which time the Sophomores had a rollicking good time. A Valentine "hop" was sponsored for the whole school and in March an interesting assembly was presented. As a finale, another successful class party was held in May.

Although many obstacles were faced, through the co-operation and diligence of the class members and their advisors, Miss Maxine Hagan, Mr. Mark McMillan, and Mr. Kay Hirai, the Sophomores enjoyed a very successful year.





Rear: Y. Matsumoto, P. Kumashiro, R. Nakahara, A. Matsumoto, M. Hoshino, K. Kuwahara, G. Hata, A. Fujimoto, M. Kumataka, N. Ishimine.

Center: K. Kato, Y. Ii, H. Matsuura, J. Nishi, M. Sakuragi, M. Harada, M. Hachiya, A. Murayama, H. Sasaki.

Front: Y. Matsuda, N. Matsuda, A. Fukuzawa, P. Morishige, K. Kobashi, Y. Noda, P. Hirakawa, S. Mizufune.

Rear: P. Hirano, H. Jio, K. Ichiki, K. Hirata, R. Fukagawa, R. Fujioka, H. Fujimoto, G. Hirotsu, F. Hoshizaki.

Center: Y. Seiji, K. Takahashi, K. Watanabe, R. Yano, A. Tsuruda, M. Sugai, F. Yamamoto, F. Tara.

Front: S. Bungo, J. Fujimoto, H. Uchiyama, A. Yahanda, N. Yuki, M. Yamada, I. Takemori, L. Tanigawa, L. Ishihara, S. Heyano.



Rear: W. Yamamoto, M. Shimada, T. Matsunaga, K. K. Toyama, R. Ogawa, A. Segimoto, E. Nishi, T. Sano.

Center: C. Torii, K. Togami, K. Kato, T. Yamamoto, J. Yamaguchi, I. Terasaki, H. Kaneko, B. Ehara.

Front: H. Kawahara, J. Kimura, H. Kadonga, T. Oto, H. Tamura, T. Nishioka, Y. Yoneyama, S. Yamashita, S. Tsufura.







#### OFFICERS AND ADVISORS

Standing: Mrs. H. Yeaton, I. Adachi, treasurer; Mr. Higgins, G. Fujioka, class representative; Miss S. Uda.

Sitting: J. Yasumoto, vice-president; G. Katayama, leader; K. Sasa, secretary; K. Itomura, yell leader.

## *Freshmen*

At the opening of school on September 13, 1943, the members of the Freshman class were both bewildered and thrilled by being at last a part of Canal High School; however, they soon organized and elected their officers. The officers, the fine spirit of co-operation, planned a get-together so that all the Freshmen could become acquainted with one another.

The kind assistance of Miss Susie Uda, Mrs. Helen Yeaton, and Mr. Warren Higgins enabled the Freshman class to put on a very successful assembly program.

With the help of the upper classes, the Freshmen have become adjusted to Canal High School life and its slogan of "progress" and have contributed much toward its rapid development.





Rear: S. Hirokane, D. Gamow, Y. Kuramoto, N. Fukagawa, M. Ishimine, D. Miyahara, K. Itomura, S. Ichimoto.

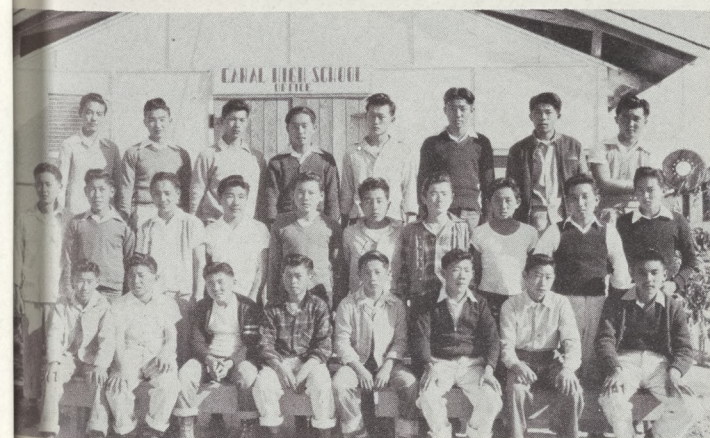
Center: L. Ide, H. Nakatsuka, C. Nishimura, H. Arakaki, T. Izuno, J. Hamada, M. Nakata, J. Murakami, L. Hagi-hara.

Front: M. Kishimoto, H. Hara, A. Murata, R. Kaneshige, R. Hiromoto, C. Kunioka, K. Nakagawa, A. Nakata, L. Nagata.

Rear: Y. Hamada, N. Aoki, I. Adachi, B. Fukuzawa, M. Atanaka, G. Fujioka, K. Araki, H. Hamaguchi, T. Hirat-ka.

Center: S. Yamashita, C. Okino, R. Takayama, A. Ya-mada, P. Yasui, R. Uda.

Front: K. Sasa, M. Yamamoto, C. Okomoto, M. Takata, Togami, M. Yoshihara, P. Yoshikawa.



Rear: B. Fukuzawa, S. Tanisawa, S. Murakami, S. Kura-moto, T. Yamada, T. Miyai, L. Uyemura, H. Seiji.

Center: A. Kobata, J. Yasumoto, S. Nakada, M. Nitta, A. Yahanda, Y. Takeda, M. Yoshimura, J. Nakatani, J. Kimoto, K. Hirokane.

Front: I. Yokoyama, G. Katayama, S. Yamada, F. Mat-suoka, K. Yamane, H. Shigaki, T. Kishimoto, R. Shimizu.





**ONE  
NATION INDIVISIBLE**



# SERVICE *and* LIFE

---

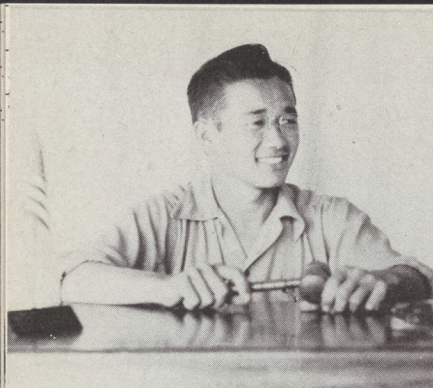
---

---





# Cabinet



HANDY  
MATSUDA  
President



GEORGE  
MATSUDA  
Vice-President



HELEN  
FUJISHIGE  
Secretary



KENNETH AOKI  
Treasurer

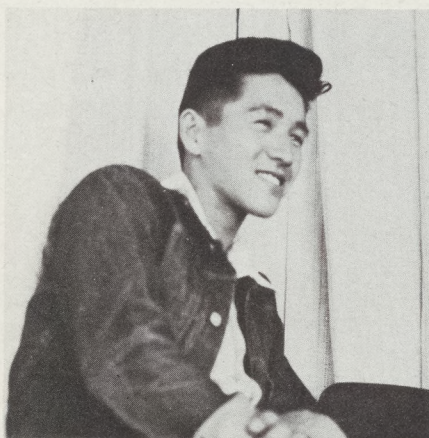


JANE HAYASHI  
Chairman of Publications

This year's Student Body Government has been conducted with skill and efficiency. Much honor goes to our seven Student Body Officers.

Our president, Handy Matsuda, and vice-president, George Matsuda, engineered the many successful assemblies and other activities sponsored by the Student Body. Secretary, Helen Fujishige, faithfully kept the minutes of the meetings. Our treasurer, Kenny Aoki, was entrusted with the handling of the Student Body funds. Chairman of Publications, Jane Hayashi, was responsible for the publication of the Hi-Tide, Rivulet and the Bear Trails, the three productions of Canal High School. Our Sergeant at Arms, Ted Komoto, was always on hand to keep order at assemblies. Our yell leader, Grace Kawahara, kept up our school spirit by her peppy yells.

By their untiring efforts and self-sacrifice they made this year a most effective, productive and memorable one.



TED KOMOTO  
Sergeant at Arms



GRACE KAWAHARA  
Yell Leader

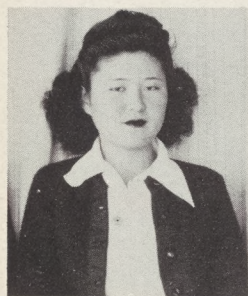




#### STUDENT COUNCIL AND ADVISORS

Standing: T. Komoto, L. Kawahara, F. Watanabe, H. Kawahara, J. Mori, C. Torii.  
 Sitting: Mrs. L. Peddy, G. Kawahara, J. Hayashi, H. Fujishige, H. Matsuda, K. Aoki, T. Yokoyama, E. Shimizu, Mrs. H. Yeaton.





Gladys Yoneda  
Co-editor



Miss Maxine  
Hagan



Mrs. Lucille  
Peddy



Grace  
Kawahara  
Co-editor

Special Sellers:

H. Fujishige  
B. K. Kobayashi  
T. Yamashita  
Y. Yoshimura



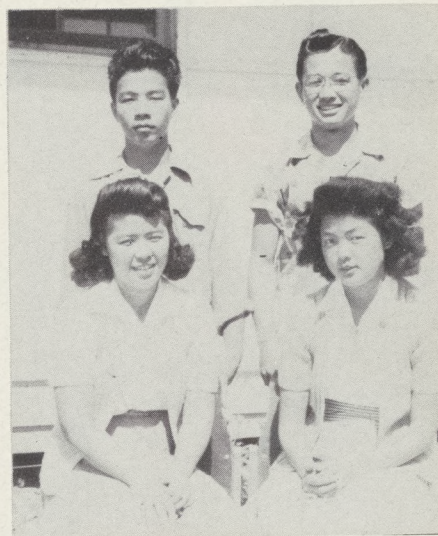


# Rivulet



## Managers:

J. Mori  
K. Aoki



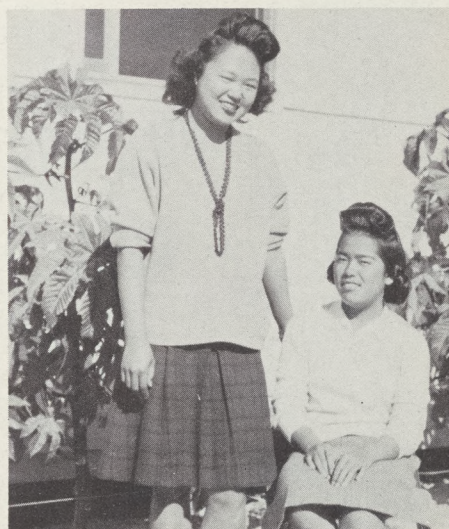
## Sports:

S. Heyano  
A. Kouno  
G. Matsuda  
H. Matsuda



## Organizations:

A. Kawada  
T. Komoto  
J. Hayashi



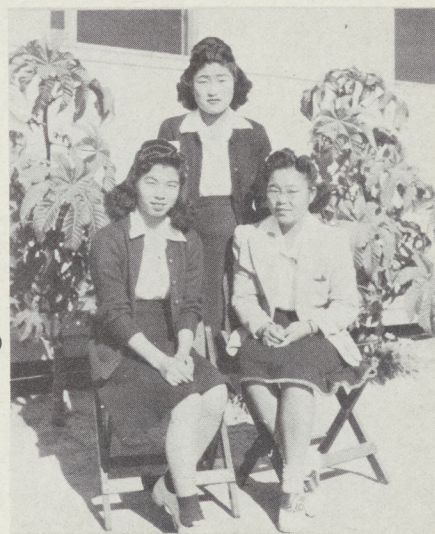
## Art:

J. Sakai  
P. Kumashiro



## Make-up:

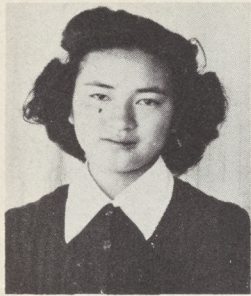
H. Murakami  
Y. Otani



## Activities:

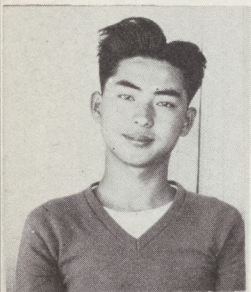
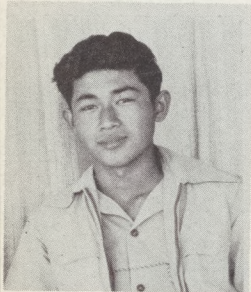
H. Sasaki  
L. Umeda  
Y. Okamoto  
(Not Pictured)  
Y. Noda





Eloise Shimizu  
Editor

Kinji Imada  
Assistant Editor  
Second Semester

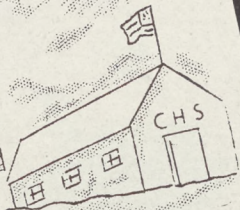


Takeo  
Nishihara  
Assistant Editor  
First Semester



Emico Tara  
Make-up Editor

# OHI-TIDE



## Staff ..

JANE HAYASHI.....Publication Director  
LILY UMEDA.....Make-up Editor—1st Semester  
YOSH NODA.....Circulation Manager  
YOKO OKAMOTO.....Editorial Page Editor  
HARRIETTE MURAKAMI.....Feature Page Editor  
NELLIE YASUMOTO.....Assistant Feature Page Editor  
YOSH TAKANO.....Sports Page Editor  
JUNE SAKAI.....Art Editor—1st Semester  
P. A. C.....Art Work for 2nd Semester

### REPORTERS

TOSHIKO ARAKAKI  
KENNY ASAMOTO  
LOUISE IDE  
NOBUKO ISHIMINE  
ROY KURAMOTO  
PAT MORISHIGE  
RUTH SAKAMOTO  
CAROLE SUGIMOTO  
EMI TSUGAWA  
MICHU YAMAMOTO  
MIYOKO YOSHIHARA



Miss Maxine Hagan  
Advisor



# BEAR TRAILS

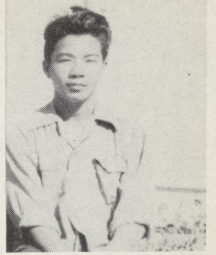


Realizing the need for a guide to help the new students entering this school and also to familiarize those not thoroughly acquainted with Canal High School, a staff headed by George Matsuda was organized to publish a handbook, the "Bear Trails."

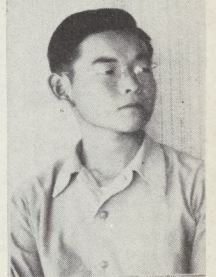
Between its covers was printed the history of Canal High from that sultry day on October 12, 1942, up to the present time. A tentative school calendar, general information, the school constitution, an outline of subjects, organizations, school yells and songs, a faculty directory, and a student directory containing the names of every student in high school, his class, former residence, and project address were all printed within this booklet.

The students had little difficulty in finding their way around with the aid of the "Bear Trails."

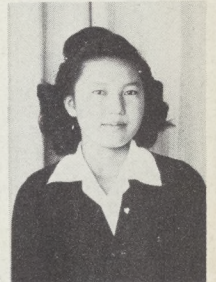
George  
Matsuda  
Editor



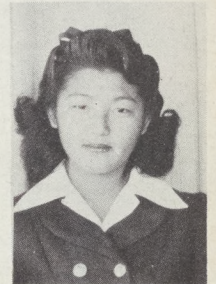
Katsumi  
Hokoda  
Assistant  
Editor



Yuico  
Otani  
Make-up  
Editor



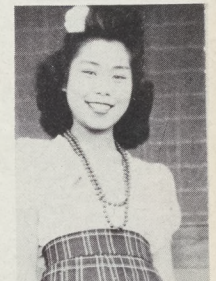
Evelyn  
Hatanaka  
Literary  
Editor



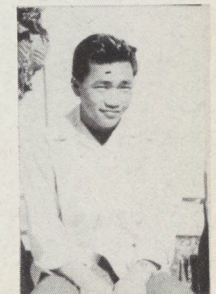
Lily Umeda  
Literary  
Editor



Alyce  
Kawada  
Make-up  
Editor



Tom Nagata  
Business  
Manager



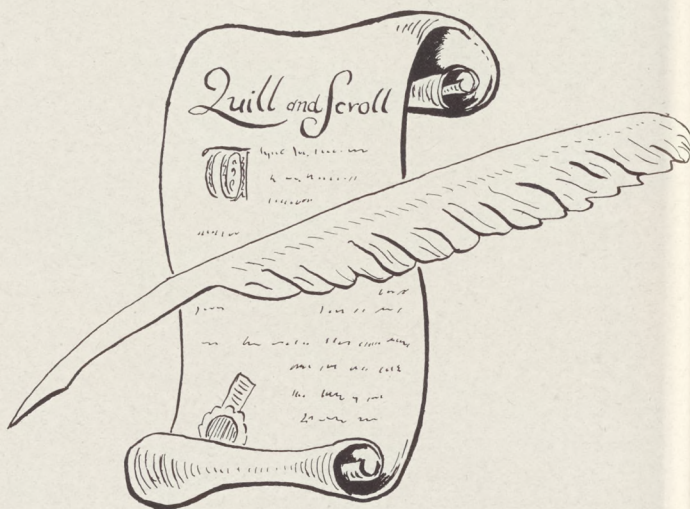




#### OFFICERS AND ADVISOR

Standing: S. Heyano, vice president;  
E. Hatanaka, secretary-treasurer.

Sitting: T. Komoto, president; Miss  
M. Hagan, advisor.



## Quill and Scroll

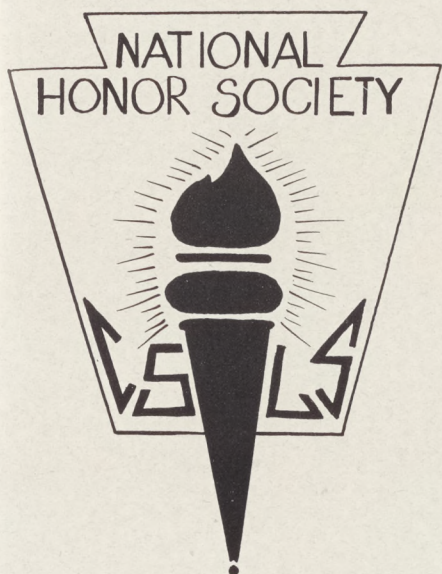
On January 20, 1944, a charter from the Quill and Scroll International Honorary Society for High School Journalists was granted Canal High School. There are 26 members who were selected on the basis of scholarship and journalistic achievement.

Canal High School has three journalistic productions this year, the Hi-Tide, newspaper; the Rivulet, annual; and the Bear Trail, a handbook published for the aid of new students.

Members: Kenneth Aoki, Evelyn Hatanaka, Jane Hayashi, Shizuko Heyano, Katsumi Hokoda, Kinji Imada, Grace Kawahara, Ted Komoto, Alyce Kouno, George Matsuda, Handy Matsuda, Joe Mōri, Harriette Murakami, Takeo Nishihara, Yoko Okamoto, Yui-ko Otani, Ruth Sakamoto, Hisako Sasaki, Eloise Shimizu, Carole Sugimoto, Yoshiye Takano, Emiko Tara, Lily Umeda, Michiye Yamamoto, Nellie Yasumoto, Gladys Yoneda.







## NATIONAL HONOR SOCIETY

The members of the National Honor Society have continued to strive onward in the development of mind and character, and all for which this society stands. They have worked faithfully in the hope that they have created enthusiasm for scholarship and leadership among younger students.

They, as a society, participated in various school activities and sought for ways to benefit others by their services.

The committee working with the National Honor Society were Mr. J. P. McVey, principal; Mrs. Lucille Peddy, Mrs. Helen Yeaton, Miss Maxine Hagan and Mr. Mark McMillan.



### OFFICERS AND ADVISORS

Standing: Mr. M. McMillan, Mrs. L. Peddy, Mrs. H. Yeaton.

Sitting: T. Komoto, president; M. Oino, secretary-treasurer; H. Takata, vice-president.

Not Pictured: Mr. J. P. McVey, Miss M. Hagan.



### MEMBERS

(Seniors): Kenneth Aoki, Helen Fujishige, Evelyn Hatanaka, Jane Hayashi, Shizuko Heyano, Ted Komoto, Handy Matsuda, George Matsuda, Mari Oino, Eloise Shimizu, Harry Takata, Emi Tara, Lily Umeda, Gladys Yoneda, and Frank Watanabe.

(Juniors): Kazuko Deguchi, Mary Fujimoto, Lindy Kawahara, Betty Kay Kobayashi, Alyce Kouno, Roy Kuramoto, Joe Mori, Harriette Murakami, Takeo Nishihara, Yoko Okamoto, and Michiye Yamamoto.

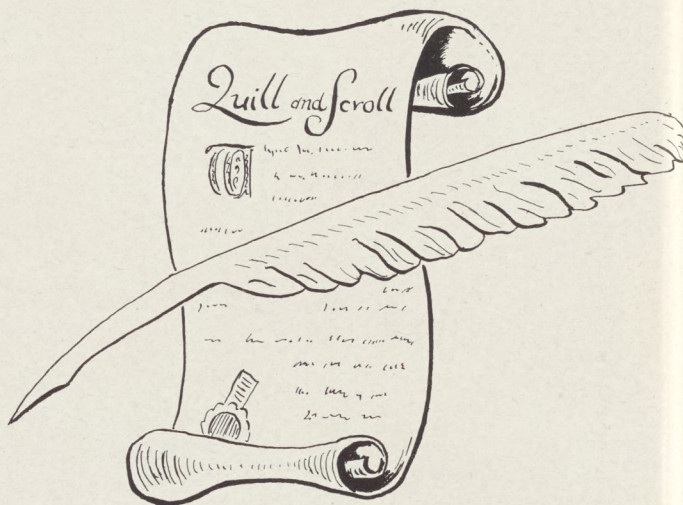






#### OFFICERS AND ADVISOR

Standing: S. Heyano, vice president;  
E. Hatanaka, secretary-treasurer.  
Sitting: T. Komoto, president; Miss  
M. Hagan, advisor.



## Quill and Scroll

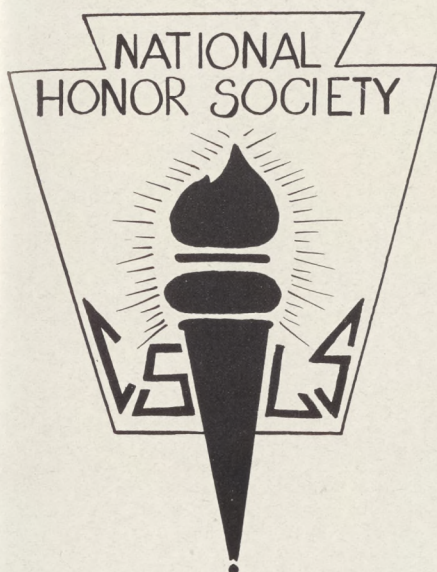
On January 20, 1944, a charter from the Quill and Scroll International Honorary Society for High School Journalists was granted Canal High School. There are 26 members who were selected on the basis of scholarship and journalistic achievement.

Canal High School has three journalistic productions this year, the Hi-Tide, newspaper; the Rivulet, annual; and the Bear Trail, a handbook published for the aid of new students.

Members: Kenneth Aoki, Evelyn Hatanaka, Jane Hayashi, Shizuko Heyano, Katsumi Hokoda, Kinji Imada, Grace Kawahara, Ted Komoto, Alyce Kouno, George Matsuda, Handy Matsuda, Joe Mōri, Harriette Murakami, Takeo Nishihara, Yoko Okamoto, Yui-ko Otani, Ruth Sakamoto, Hisako Sasaki, Eloise Shimizu, Carole Sugimoto, Yoshiye Takano, Emiko Tara, Lily Umeda, Michive Yamamoto, Nellie Yasumoto, Gladys Yoneda.







## NATIONAL HONOR SOCIETY

The members of the National Honor Society have continued to strive onward in the development of mind and character, and all for which this society stands. They have worked faithfully in the hope that they have created enthusiasm for scholarship and leadership among younger students.

They, as a society, participated in various school activities and sought for ways to benefit others by their services.

The committee working with the National Honor Society were Mr. J. P. McVey, principal; Mrs. Lucille Peddy, Mrs. Helen Yeaton, Miss Maxine Hagan and Mr. Mark McMillan.



### OFFICERS AND ADVISORS

Standing: Mr. M. McMillan, Mrs. L. Peddy, Mrs. H. Yeaton.

Sitting: T. Komoto, president; M. Oino, secretary-treasurer; H. Takata, vice-president.

Not Pictured: Mr. J. P. McVey, Miss M. Hagan.



### MEMBERS

(Seniors): Kenneth Aoki, Helen Fujishige, Evelyn Hatanaka, Jane Hayashi, Shizuko Heyano, Ted Komoto, Handy Matsuda, George Matsuda, Mari Oino, Eloise Shimizu, Harry Takata, Emi Tara, Lily Umeda, Gladys Yoneda, and Frank Watanabe.

(Juniors): Kazuko Deguchi, Mary Fujimoto, Lindy Kawahara, Betty Kay Kobayashi, Alyce Kouno, Roy Kuramoto, Joe Mori, Harriette Murakami, Takeo Nishihara, Yoko Okamoto, and Michiye Yamamoto.





# Girl Reserves



## SENIOR GIRLS RESERVES

Rear: J. Hayashi, T. Murayama, H. Yoshihara, A. Tsuruda, Mrs. L. Peddy, M. Fujimoto, H. Murakami, M. Shimoide, K. Hamada.  
Front: J. Sakai, H. Sasaki, M. Itomura, B. Matsumoto, L. Umeda.

## JUNIOR GIRLS RESERVES

Rear: M. Kumataka, M. Hachiya, I. Takemori, M. Sakuragi, Mrs. L. Peddy, A. Murayama, N. Matsuda, Y. Masumoto, A. Fujimoto.  
Front: Y. Seiji, J. Nishi, A. Yahanda, N. Yuki, L. Uchimoto, P. Hirakawa, M. Hoshino, S. Mizufune



## FRESHMAN GIRL RESERVES

Rear: L. Nagata, D. Gamow, A. Nakata, L. Ide, M. Yoshihara, M. Nakata, M. Ishimine.  
Center: H. Arakaki, N. Fukugawa, A. Yamada, Mrs. L. Peddy, J. Murakami, L. Hagihara, M. Takata.  
Front: K. Itomura, J. Kato, K. Sasa, R. Takayama, P. Yasui, J. Hamada, P. Togami, M. Yamamoto, Y. Kuramoto.





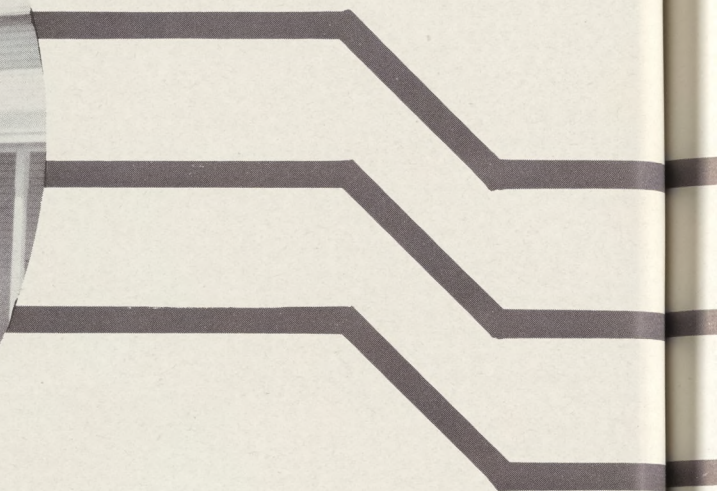
Familiar, isn't it?



Armistice Meditation







**WITH LIBERTY**



# ACTIVITIES



Harvest Carnival  
November 27-28, 1943



"Why the Chimes Rang"  
December 22, 1943

Principals from Salt River Valley  
January 20, 1944



Senior Ditch Day  
May 1, 1944







## FORENSIC CLUB

Rear: T. Murayama, G. Kawahara, M. Yamamoto, H. Fujishige, L. Umeda, E. Tara, H. Murakami, Y. Yoshimura.

Center: F. Watanabe, P. Nagata, S. Yamogida, L. Kawahara, J. Mori, T. Komoto, J. Totsubo, J. Yasumoto, G. Matsuda.

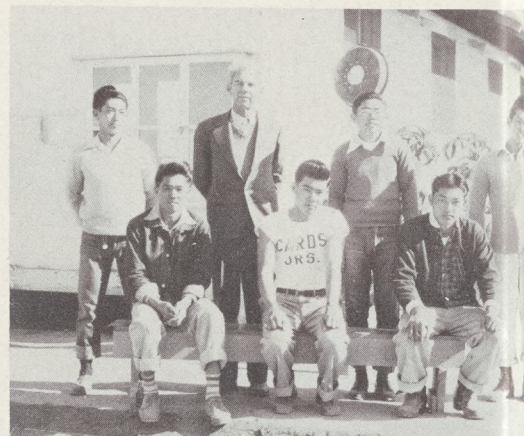
Front: H. Kawahara, E. Shimizu, A. Kouno, B. K. Kobayashi, N. Ishimine, J. Hayashi, S. Mizufune, Miss Hagan, I. Yokoyama.



## FUTURE FARMERS OF AMERICA

Standing: K. Togami, T. Yamamoto, H. Fujimoto, A. Handa, Mr. George, B. Koda, K. Araki, G. Fujioka, A. Kobata.

Sitting: R. Koda, J. Omori, H. Hirabayashi, T. Tanouye, M. Doi, K. Tsuboi, K. Fukuzawa, T. Miyai.

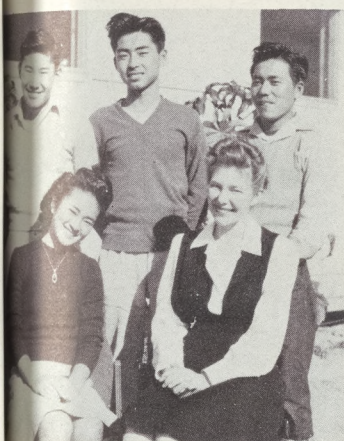


## FUTURE FARMERS OF AMERICA OFFICERS AND ADVISORS

Standing: R. Koda, reporter; Mr. L. George, advisor; K. Tsuboi, secretary; B. Koda, sergeant at arms.

Sitting: J. Omori, vice president; T. Tanouye, president; H. Hirabayashi, treasurer.





### LOS PAN AMERICANOS OFFICERS AND ADVISOR

Standing: K. Asamoto, treasurer;  
T. Nishihara, vice president;  
K. Aoki, president.

Sitting: E. Shimizu, secretary;  
Mrs. Yeaton, advisor.



### LOS PAN AMERICANOS

Standing: K. Nojiri, H. Nakagawa, S. Furukawa, J. Yoshimi, M. Fujimoto, E. Hatanaka, K. Deguchi, S. Takata, Y. Kaneshige, Y. Kubota, N. Doi, J. Nishioka, M. Itomura.

Sitting: Y. Okamoto, T. Hata, T. Nishihara, K. Aoki, Mrs. Yeaton, E. Shimizu, K. Asamoto, Y. Takano, Y. Hirose.



### PUBLICATION ART CLUB OFFICERS

Standing: B. Yoshikawa, chairman of award's committee;  
M. Muto, treasurer; N. Ishimine, sergeant at arms.

Sitting: Y. Yoshimura, secretary; H. Fujishige, president;  
T. Tsufura, vice president; Mr. Slate, advisor, (not pictured).



### PUBLICATION ART CLUB

Rear: N. Ishimine, R. Kaneshige, P. Yasui, T. Otani,  
Mr. Slate.

Center: M. Ishimine, P. Kumashiro, K. Nitasaka, B.  
Yoshikawa, H. Kadonaga.

Front: W. Ando, R. Yano, M. Muto, Y. Yoshimura, H.  
Fujishige, S. Tsufura, R. Ogawa.





#### SCIENCE CLUB

Standing: Mr. Onoda, T. Nishihara, K. Asamoto, Y. Yamada, J. Nishi, H. Yamaguchi, S. Yamogida, K. Deguchi, A. Kawachi, T. Arakaki, Y. Okamoto, J. Hayashi, J. Nishioka, Mr. Brunstein. Sitting: H. Murayama, M. Masumoto, L. Kawahara, S. Yamada, J. Kimura, T. Katayama, F. Watanabe, T. Komoto, J. Mori, S. Hikido, H. Takata, K. Imada.



#### SCIENCE CLUB OFFICERS AND ADVISORS

Front: J. Mori, secretary; F. Watanabe, president; H. Takata, vice president. Rear: Mr. Onoda, Mr. McMillan.



#### CANAL COMMERCIAL CLUB

Rear: H. Murakami, F. Harada, E. Tara, Y. Fujikawa, M. Muto, A. Kawada, M. Fujimoto, M. Egusa, Y. Takano, Y. Otani, G. Kawahara. Second: Y. Yoshimura, M. Ahara, T. Uchiyama, M. Yamamoto, M. Shiine, S. Heyano, E. Hatanaka, Y. Kubota, K. Doi, T. Yamashita, J. Adachi. Third: I. Nakagawa, J. Seiji, N. Yasumoto, K. Kotsubo, Miss Taylor, B. K. Kobayashi, H. Sasaki, M. Ichihana, M. Shimoide. Fourth: S. Furukawa, R. Sakamoto, K. Watanabe, Y. Ii, Miss Shigyo, P. Morishige, A. Fukuzawa, I. Iwamura, H. Sasaki, M. Harada. Fifth: L. Tanigawa, Y. Noda, F. Yamamoto, F. Tara, T. Murayama, T. Hata, K. Kato, A. Matsumoto, M. Yamada, N. Ishimine.



#### TRI C'S OFFICERS

Standing: Y. Takano, treasurer; T. Uchiyama, secretary. Sitting: Y. Otani, vice president; S. Heyano, president. Advisor: Miss Taylor (not pictured).



# Music



## BAND

Standing: Mr. Mountain, Y. Yamada, W. Ando, K. Sugai, E. Fujimoto, M. Fujimoto, B. K. Kobayashi, N. Doi, N. Yasumoto, M. Hoshino, Miss Sasaki.  
Sitting: S. Mizufune, A. Fujimoto, T. Yasui, H. Fujishige, T. Otani, A. Kouno, P. Morishige, S. Yamada, S. Yamada, E. Nishi, N. Aoki, T. Kajitani.

## ORCHESTRA

Standing: Miss Sasaki, B. K. Kobayashi, A. Kouno, K. Sugai, E. Fujimoto, S. Yamada, Y. Yamada, N. Yasumoto, M. Hoshino. Sitting: S. Mizufune, A. Fujimoto, T. Yasui, T. Otani, M. Fujimoto, L. Shimoto, M. Shimoide, H. Uchiyama, R. Kaneshige, Mr. Mountain.



## GLEE CLUB

Rear: S. Yamashita, N. Fukagawa, Y. Kuramoto, M. Yoshihara, A. Yamada, L. Ide, R. Uda, R. Sakamoto, H. Yoshihara, J. Seiji. Center: L. Nagata, D. Gamow, R. Hagihara, H. Murakami, R. Hiroto, R. Takayama, C. Kunioka, T. Izuno, H. Arakaki, M. Takata, Mr. Higgins. Front: K. Sasa, Y. Seiji, K. Nojiri, Y. Yoshimura, Y. Matsuda, P. Yasui, R. Kaneshige, M. Yamada.



# Drama



Members:

Standing: Y. Totsubo, A. Tsuruda, H. Fujishige.

Sitting: Mrs. Yeaton, Y. Yoshimura, H. Yoshihara.

The Drama Class, under the direction of Mrs. Yeaton, has had an active year. Formed for the purpose of promoting interest in the presenting of better plays, they have accomplished much.

The main event in their active routine was the presentation of the dramatic play "When the Chimes Rang." Youko Yoshimura had the leading role and was assisted by a cast consisting of Yoshiye Totsubo, Helen Fugishige, Hisaye Yoshihara, Ann Tsuruda, Nobuko Ishimine, Jackson Totsubo, Ted Komoto, Roy Fukugawa, Shogo Hikido and Herbert Kawahara.

The story briefly told is a boy's ardent desire to go to church on Christmas Eve to witness a miracle, the ringing of the Chimes when the perfect gift is laid on the altar. He is not able to go at the last moment as he had been previously promised because of an old woman who came to the cottage for shelter. Since no one would be home to take care of this old woman, he kindly, out of pure generosity, said he would do it. The townspeople were all waiting to see whose gift would make the chimes ring. The priceless gifts from the king, courtiers and rich people were laid on the altar as an offering to the Christ Child, but the chimes did not ring. Because of his unselfishness, the poor boy's gift of his only possession, two pennies, made the chimes ring out its resounding echoes of peace on earth, good will to man.

## *"Why The Chimes Ring"*







Check them legs!



Chummy, eh?



Ah! jazz—



We three

Starchy,  
as usual.



Small,  
but mighty.



Witchin,  
no lie!



Blow, boys, blow!







Girls Physical Education—Waiting for the bell.



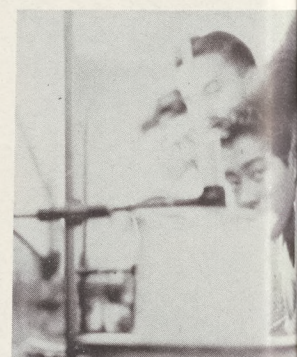
Typing—Ready, go.



History—Gullivars, isn't history boring?



Biology—Where's the frog?

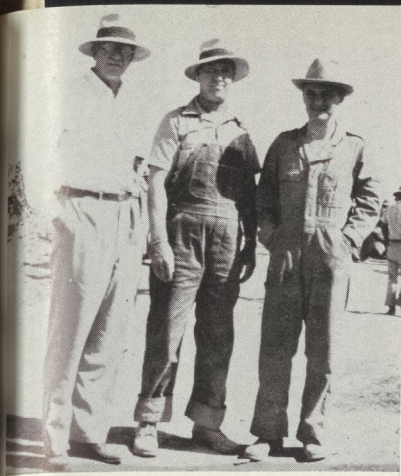


Physics—  
V V1 ???  
P P1 ???



Plane Geometry—Future Einsteins!





Why aren't they working?



The basket's too high.



Resting again!



Another long walk



Bingo!!!!!!



Hail, hail, the gang's all here.



You, back there.



Bzz Bzz Bzz.



Take your pick!!!





**AND JUSTICE**



# SPORTS

---

---

---





# Nat'l Athletic Scholarship Society



## MEMBERS:

K. Aoki, M. Doi, F. Katayama, J. Kimura, T. Komoto, G. Matsuda, H. Matsuda, J. Mori, K. Ogawa, M. Ohara, T. Tanouye, M. Terada, S. Yamada.

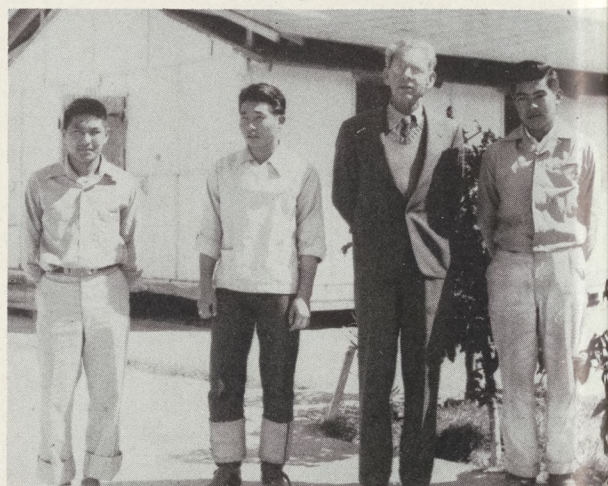
The National Athletic Scholarship Society is an organization of boys who have earned their letters in school sports, and who have grades equal to, or above the general average of the student body.

This National Society was organized in February, 1925, by a group of secondary school principals in Washington, D. C. It has over 2,000 chapters representing high schools in every state of the Union. Canal High was granted its charter, number 10,030, on January 21, 1944.

The purpose of this club is: To foster high scholarship among athletes, to elevate the ideals of true sportsmanship, to stimulate the desire for balanced training, and to develop leadership in the secondary schools of the United States.

Together with the Lettermen's Club, the National Athletic School Scholarship Society sponsored a "Pre-Easter" Social.

Shoji Yamada, President;  
Frank Katayama, Vice-President;  
Tom Tanouye, Secretary-Treasurer;  
Mr. L. George, Advisor.







Sitting: S. Yamashita, manager, F. Kataya, S. Yamada, G. Matsuda, H. Iwanaga, R. Ogawa, K. Kawa, H. Matsuda, J. Takemori, N. Yoshida.

Standing: I. Handa, Y. Sano, G. Fujimoto, J. Yamaguchi, H. Murayama, R. Fukuzawa, J. Mori, T. Komoto, G. Masaka.

## Football

With the ending of summer vacation and the beginning of a new fall semester, the 1943 grid season was ushered in by flying footballs and creaking joints.

Playing an experienced and heavy Rough Rider Eleven in their initial encounter, the Bears were bruised, 6 to 0. Both teams see-sawed across the field and for awhile it seemed as though neither team would emerge victorious.

Although outplaying the Solons most of the way, their passing offense proved too much for the high school. Following a series of looping aeriels, the opponents finally hit pay dirt. The Bears fought hard throughout, but found themselves on the losing end of a 6-0 score when the final whistle sounded.

Meeting the Rough Riders for the second time, the Bears were out for, and got revenge by trouncing the Crimson Tide 6 to 0. In one of the most exciting games of the season the Bears displayed their strategy in attack and flawless ball handling and teamwork.

Competing against a Potential Threat aggregation from Butte at a very colorful ceremony on Thanksgiving Day, the High School eked out a 2-0 victory. A fumble in the end zone, resulting in a safety, accounted for the two digit tally.

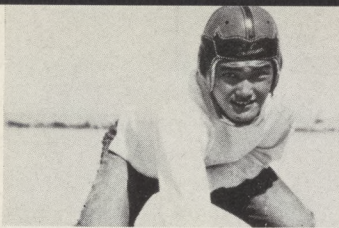
Showing his true generalship in the back field, Hideo Iwanaga seemed to know what to call at precisely the most opportune moment. Undoubtedly one of Canals finest, Nob Yoshida displayed his versatility in both passing and running. Other outstanding back fielders were, Shoji Yamada, Ted Komoto, Frank Katayama, and Tom Nagata. Those who sparked the line, were the two hard hitting guards, Nob Tagawa and Kikue Nishimoto. Handy Matsuda, Yoshiyuki Sano, Hiroshi Murayama, Joe Mori, and Mas Yoshikawa were also outstanding.

Line: G. Fujimoto, H. Murayama, G. Matsuda, H. Matsuda, G. Masaki, Y. Yano, J. Mori.

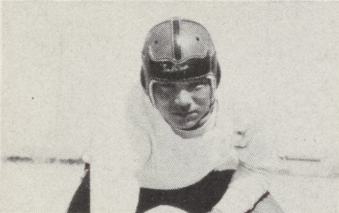
Back Field: T. Komoto, S. Yamada, H. Iwanaga, N. Yoshida.







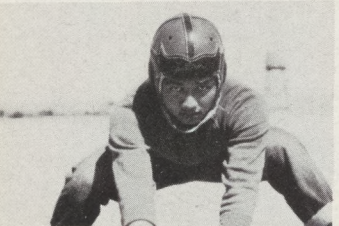
J. Mori  
Left End



Y. Sano  
Left Tackle



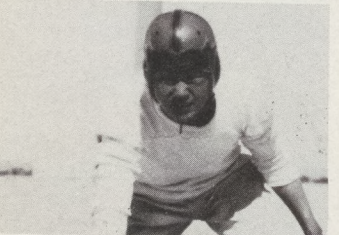
N. Tagawa  
Left Guard



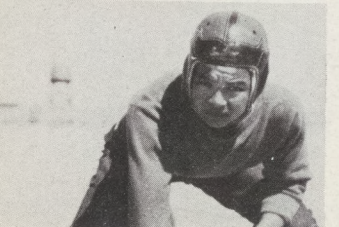
H. Matsuda  
Center



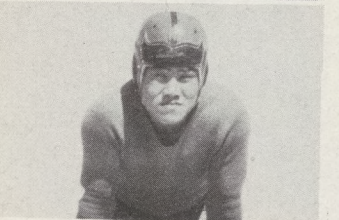
K. Nishimoto  
Right Guard



H. Murayama  
Right Tackle



G. Fujimoto  
Right End



H. Iwanaga  
Quarterback

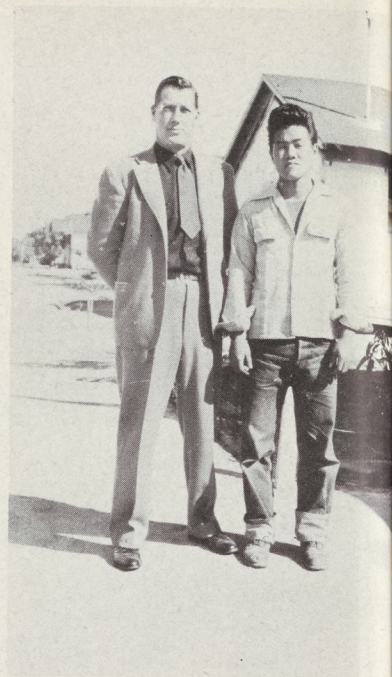
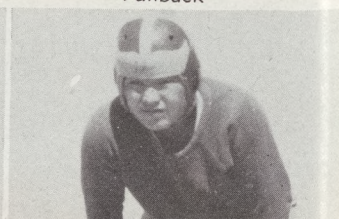
T. Komoto  
Right Half



S. Yamada  
Left Half



N. Yoshida  
Fullback



Coach J. L. Stringer  
Captain H. Iwanaga

Before coming to Canal High School, Coach Stringer starred in athletics at the St. Mary's College in Kansas. Upon completing St. Mary's College, he was the Director of Athletics at the Champion Jesuit School for boys in Prairie Du Chien, Wisconsin.

It was our good fortune to have Mr. Stringer as the Director of Athletics for the short while that he was at Canal High School. He has instilled in the boys his spirit to play hard and clean. A gentleman and true athlete, he won the respect and friendship of everyone who came in contact with him.



# Basketball

## Golden Bears

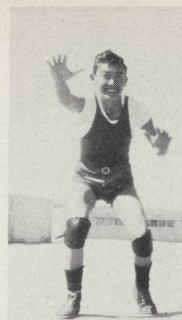
Rated as underdogs in the Canal City Athletic Conference, the Golden Bears fought hard and played heads-up throughout the first round to capture three of their five contests.

At the beginning of the league the Bears met misfortune when Coach Stringer was transferred to another department. Realizing that the team was losing its potentialities and initiative in practice, Captain Harry Imura and Frank Ichimoto, of the Community Activities Section, proceeded to organize the team into a smoother working quintet.

Full of fight and determination, the Canal Hoops-ers won three consecutive games in the second round, but were edged out by the Vikings, 33-35. By defeating four of their five opponents in the second round, the Golden Bears had a crack at the championship. In the crucial playoff, however, the Bears just didn't quite warm up. The Vikings were victorious again, having defeated the only contending team, 32-28.

Captain Harry Imura led his teammates in points and was the second highest scorer in the league with an average of 12.9 points per game. His dead eye shooting, and expert ball handling placed him on the second team of the Canal All Stars. Right behind Harry, was Kazuo Oto, towering center, who added points when they were needed. Kazuo was listed in the third team of All Stars. Always playing smart ball, were the two guards, Hiroshi Murayama and Shoji Yamada. The latter placed on the second All Star team. Joe Mori, forward, was a consistent player who proved hard to guard. Other outstanding members of the squad were Ken Fukuzawa, George Fujimoto, Ted Komoto, Yoshiyuki Sano and Ace Handa.

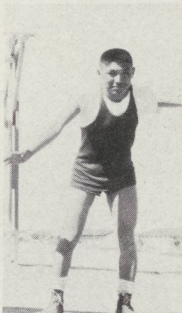
K. Fukuzawa  
Guard



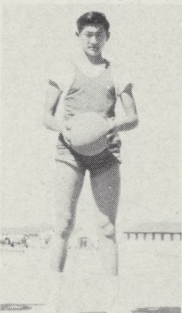
H. Myrayama  
Guard



S. Yamada  
Guard



K. Oto  
Center



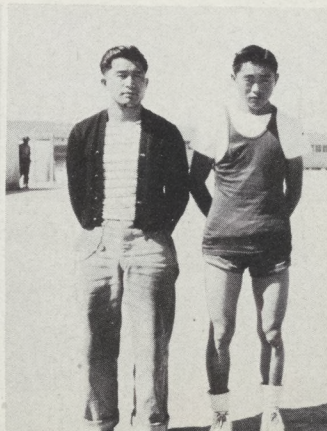
H. Imura  
Forward



J. Mori Forward



Coach F. Ichimoto  
Captain H. Imura



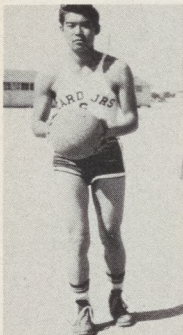
Front: I. Handa, H. Imura, H. Murayama, J. Mori, S. Yamada.  
Rear: K. Imada, manager; K. Fukuzawa, K. Oto, G. Fujimoto,  
Y. Sano, T. Komoto, F. Ichimoto, coach.







E. Yamamoto  
Forward



T. Tanouye  
Forward



K. Yoshimoto  
Center



R. Kooda  
Guard



K. Tsuboi  
Guard



M. Doi  
Guard

## Card Juniors

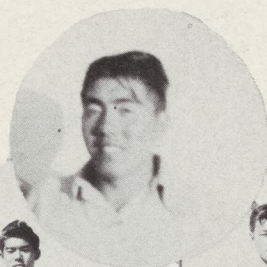
Due to the fact that some of the students were taking job experience courses and were unable to practice regularly with the Golden Bears, another High School team was formed consisting of a number of boys who had played together before. They were known as the Card Juniors.

Although small in stature, they made up for their size in speed and teamwork. Defeating the Vikings in the first round, 47-46, they went about upsetting the stronger teams of the league, illustrating how unpredictable they were.

With fast breaks and expert ball control, the spirited Cards entered into the second round of competition. Finding their opponents acquainted with their style of playing, the Cards hit a slump, winning only two games. No matter what the odds, the Cards pushed ahead until the final whistle. Captain Kaz Yoshimoto, center, and Roy Kooda, guard, were voted on the second All Star for their fine basketball ability. Tom Tanouye, shifty forward, always under the basket, was co-captain of the team. He also placed on the third All Star team. Spectators were fascinated by Eiji Yamamoto's fine faking and expert shooting. Other members of the team were, Kaz Tsuboi, Min Doi, James Omori, Sat Tanouye, and Hiro Hirabayashi.

Rear: S. Tanouye, K. Yoshimoto, H. Hirabayashi, M. Doi, T. Tanouye.

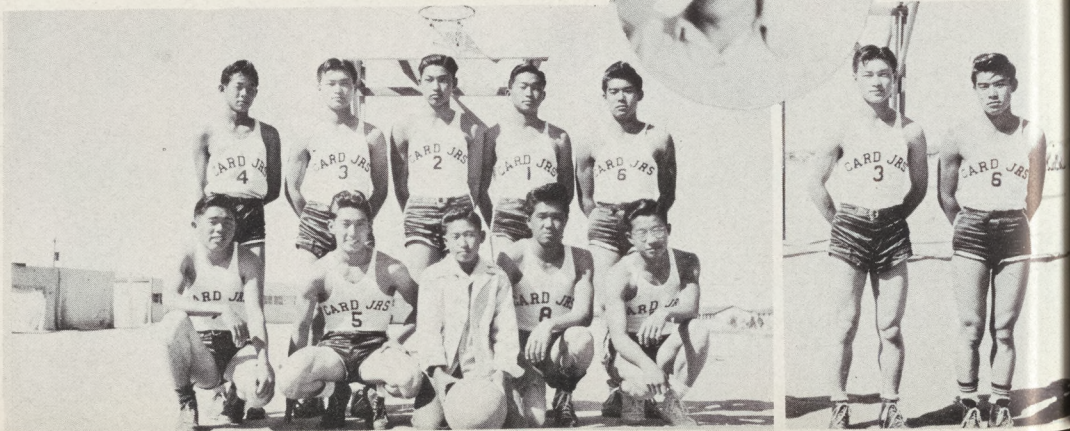
Front: K. Tsuboi, R. Kooda, I. Yokoyama, J. Omori, E. Yamamoto



Coach Tsuboi

Captain K. Yoshimoto

Co-Captain T. Tanouye







Front: G. Murakami, J. Takemori, H. Hiromoto, K. Sukimoto, K. Aoki.  
Rear: N. Aoki, manager; M. Oka, M. Ohara, J. Nishi, R. Ogawa, G. Ichimoto, coach.



Coach G. Ichimoto  
Captain K. Aoki

## Cubs

The Cubs had a successful season by winning nine of their twelve games.

Coached by George Ichimoto and led by Captain Kenny Aoki, the Cubs missed the championship in the first round when they lost their only game to the first round champs, the Dukes.

Fighting hard in the second round, they won two of their four games. The high point men of the team were Mas Ohara with 80 points and Haruo Hiromoto with 79 points.

Other members of the team who earned letters were: Ken Aoki, Tom Nagata, James Takemori, Mich Oka, Reiro Ogawa, Kaz Sugimoto, George Murakami, and John Nishi.

## Bruins

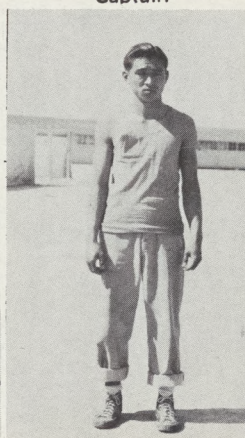
Although the Bruins won few of their games, nevertheless they fought hard and showed good sportsmanship. Coached by Goro Maeda and captained by Tak Hashimura, the Bruins are to be credited with an unequaled spirit.

The leading player was George Yoshimi with 63 points for the season. The following earned letters: Tak Hashimura, Nob Yoshida, George Yoshimi, Frank Katayama, Seichi Tanisawa, Sat Tsufura, John Kimura, George Fujioka, Sam Furukawa, Jim Tsuji, and Russell Shimizu, manager.

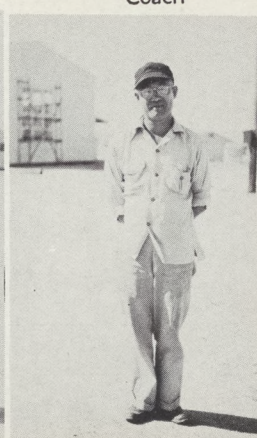
Front: S. Tsufura, R. Shimizu, manager; N. Yoshida, F. Katayama.  
Rear: G. Yoshimi, J. Tsuji, G. Fujioka, S. Tanisawa, T. Hashimura, J. Kimura.



T. Hashimura  
Captain

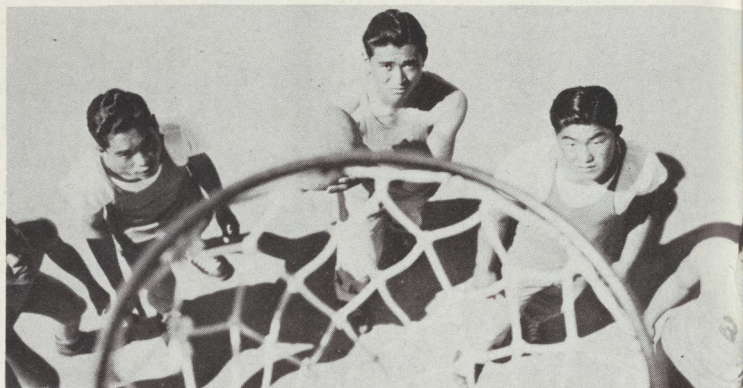


G. Maeda  
Coach





H. Hiromoto  
Center  
K. Aoki  
Forward  
T. Nagata  
Forward  
J. Takemori  
Guard  
M. Ohara  
Guard



G. Yoshimi, guard; J. Kimura, forward; T. Hashimura, center  
N. Yoshida, guard; F. Katayama, forward.

## *Teddy Bears*

The inexperienced Teddy Bears, the wee ones of Canal, scored 496 points to their opponents 181 points in ten games.

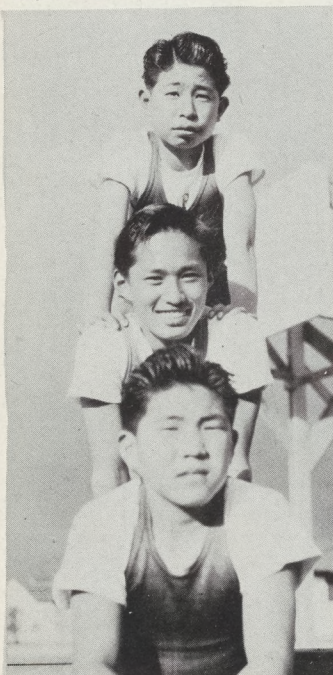
With the help of George Okazaki and through the leadership of Captain Suyenori Yamada, the Teddy Bears won a majority of their games. Losing two of their most important games to the champs, the Angels, the Teddy Bears landed in second place.

The following participated to make the year a big success: Suyenori Yamada, George Katayama, Frank Matsuoka, Irvine Yokoyama, Ken Yamane, Yukiaki Takeda, Tosh Hiratsuka, Henry Shigaki, Yukio Hamada, Masumi Nitta, and John Yasumoto, manager.

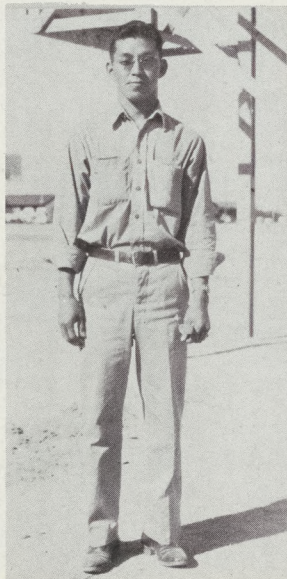
Co-Captain G. Katayama

Co-Captain T. Hiratsuka

Captain S. Yamada



Coach G. Okazaki



Rear: I. Yokoyama, H. Shigaki, Y. Hamada, F. Matsuoka,  
K. Yamane.

Front: G. Katayama, Y. Takeda, T. Hiratsuka, N. Nitta, S. Yamada.



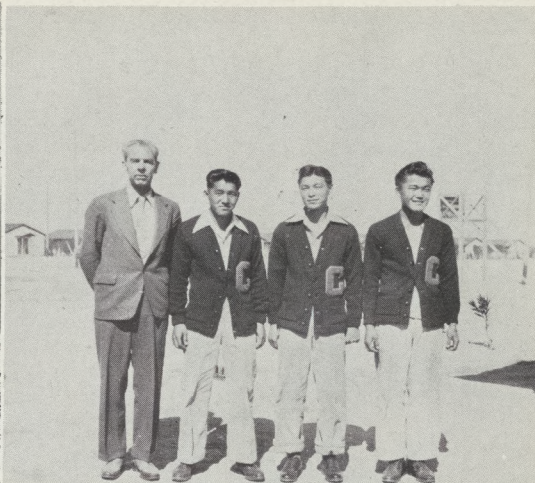




Rear: G. Matsuda, J. Kimura, K. Tsuboi, J. Mori, T. Tanouye, T. Komoto, S. Yamashita.

Center: T. Nagata, H. Iwanaga, J. Yamaguchi, H. Hirabayashi, G. Fujimoto, K. Yoshimoto, M. Doi, Y. Sano.

Front: M. Yoshikawa, H. Matsuda, M. Terada, I. Handa, M. Ohara, J. Takemori, K. Aoki.



Mr. George, advisor; T. Komoto, vice-president; K. Yoshimoto, secretary-treasurer; J. Mori, president.

## Lettermen

The Lettermen's club, consisting of boys who earned letter awards during the past year, whole-heartedly served their school by participating in school activities, aiding in the carnival, and ushering at assemblies.

A social was sponsored by the two athletic organizations on April 1, 1944.

The purpose of the organization is to promote good sportsmanship and leadership.

## Baseball



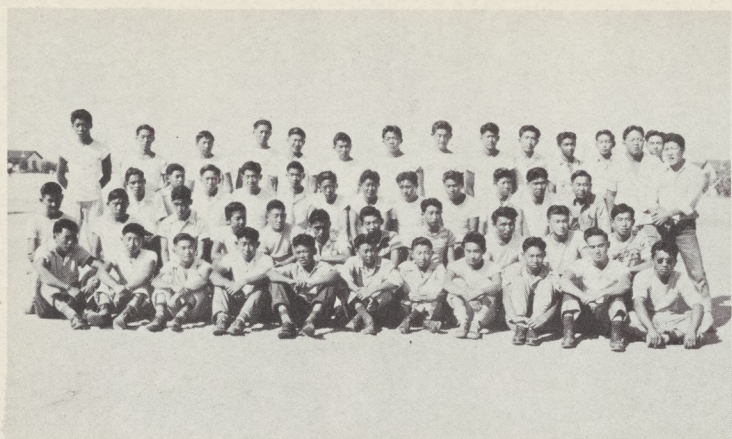
Co-captain, K. Aoki; coach, Mr. M. Davis; Co-captain, H. Matsuda.



Standing: J. Totsubo, K. Kato, T. Hashimura, Y. Sano, G. Fujioka, J. Mori, S. Murakami, F. Togami, Tom Yamamoto.

Sitting: K. Aoki, S. Tsufura, H. Hiromoto, H. Matsuda, N. Aoki, A. Kobata, G. Murakami.





**MUSCLE MEN OF CANAL**



**SOME MORE MUSCLE MEN**



**SMILE, MUG, SMILE!**



**NOB INTERCEPTS**



**STRINGER WITH THE BOY**



**LET'S GO GANG!**



**FOUR OF A KIND**

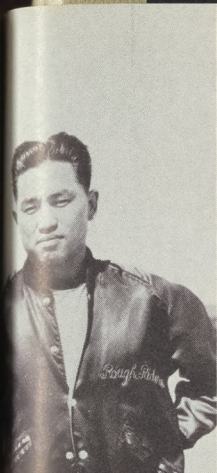


**AREN'T THEY HANDSOME?**



**TAK CONNECTS WITH ONE**





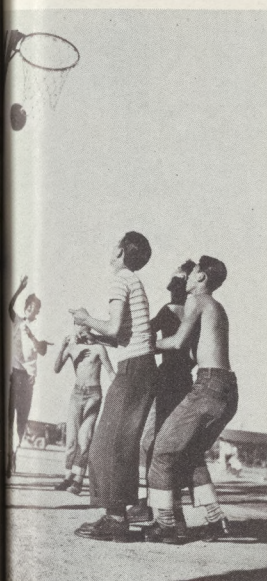
GEORGE ICHIMOTO  
CUB MENTOR



JUNIOR LEAGUE MIX-UP. TWO POINTS



FRANK ICHIMOTO  
BEAR COACH



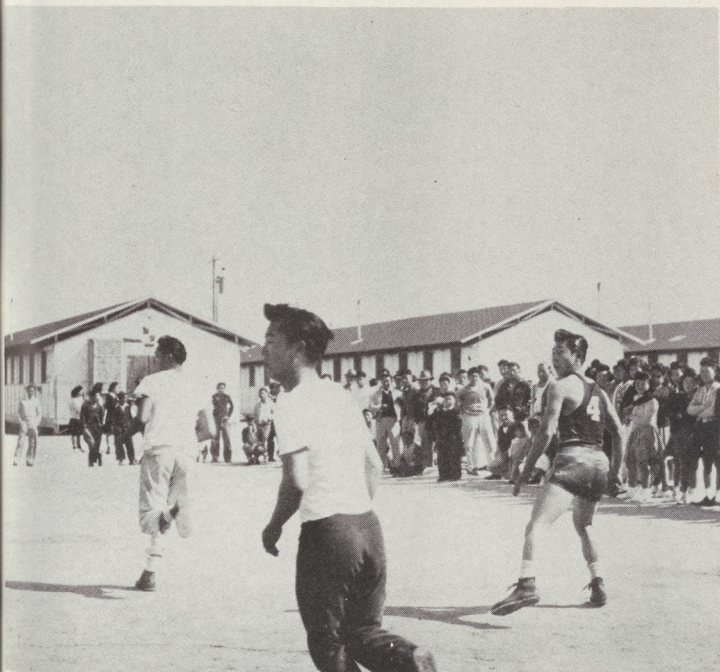
GULLIVER'S" FAMOUS  
HOOK



LITTLE GIANTS OF CANAL COUNTY



PULL-'EM-UP FRANK

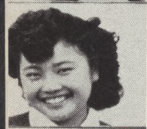


WHERE'S THE BALL?



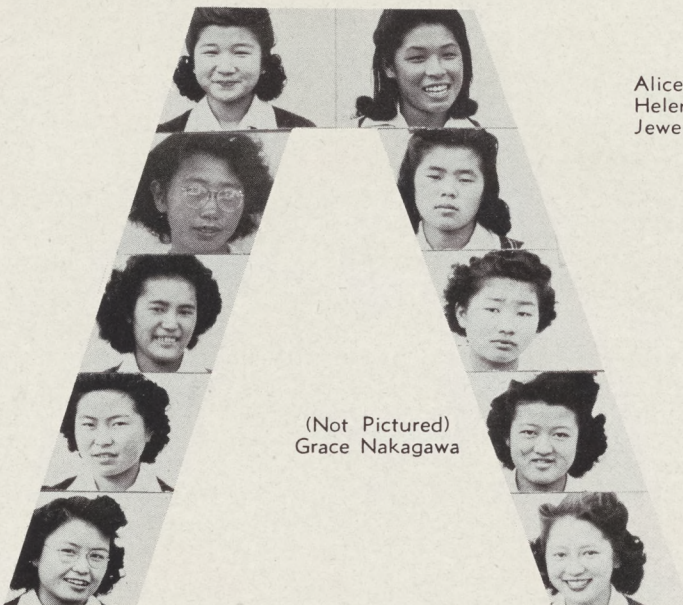
"WAITIN' FOR THE  
EVENIN' MAIL"





Kimiko Hamada, Shiz Heyno, Bessie Matsumoto,  
Toy Murayama, Hisaye Yoshihara, Youko Yoshimura,  
Kumiko Handa, Michiko Itomura, Alice Kawauchi,  
Harriette Murakami, Jane Seiji, Michiko Shiine,  
Carole Sugimoto, Yoshiye Takano, Michiye  
Yamamoto, Miyoko Hachiya.

Grace Hata, Peggy Hirakawa,  
Marie Hoshino, Yoshiye Ii,  
Aidori Kumataka



(Not Pictured)  
Grace Nakagawa

Alice Matsumoto,  
Helen Matsuura, Sumiko Mizufune,  
Jewel Nishi, Yosh Noda

Mary Honda, Yuriko Seiji,  
Kikuyo Takahashi, Irene Takemori,  
Fujiko Tara, Ann Tsuruda, Laura  
Uchimoto, Fusako Yamamoto,  
Nobue Yuki, Julia Seiji.



(Not Pictured)  
Haruko Ishimine



Lillian  
Tanigawa  
Treasurer



Mary  
Fujimoto  
Speedball



Kikuye  
Kawahara  
Softball



Grace Kawahara  
Vice-President



Jane Hayashi  
President



Alice Kouno  
Secretary



Hazel  
Bungo  
Basketball



Mutsumi  
Egusa  
Volleyball



Aiko  
Murayama  
Hiking



Miss Mary Hughes

## GIRLS ATHLETIC ASSOCIATION

The winners! The champs! Hurrah! These are just a few of the sayings at every game that was battled through.

This year's turnouts have been exceedingly triumphant and tournaments have been exciting and tense. The four major sports were volleyball, basketball, speedball, and softball played in the order listed.

The students experienced a great loss when the Physical Education instructor, Miss Mary Hughes, departed at the end of the first semester to join the Red Cross, but, nevertheless, they came through with flying colors.

The G. A. A.'s activities were hikes, initiations, parties, field days, G. A. A. socials, and interclass tournaments. A new point system was developed early in the year.

During the second semester much time was devoted to Health Education instructed by Miss Maxine Hagan during class periods while the field sports were under Miss Mary Honda and later Miss Julia Seiji.

The goal toward which all worked may be accounted as praiseworthy "Unexcelled Sportsmanship."





# Champs!

## Volleyball



### JUNIORS

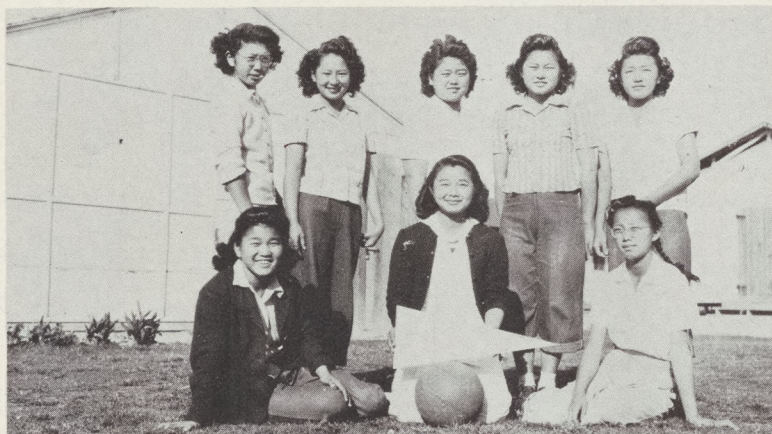
Rear: K. Deguchi, R. Nakatsuka, C. Sugimoto, Y. Takano.

Front: M. Fujimoto, T. Hata, A. Kouno, E. Oda, G. Kawahara.

## Basketball

### SOPHOMORES

Standing: Y. Ii, Y. Noda, A. Murayama, F. Yamamoto, F. Tara.



Sitting: L. Tanigawa, K. Kuwahara, I. Takemori.

## Speedball

### JUNIORS

Rear: C. Sugimoto, M. Egusa, T. Uchiyama, T. Otani, A. Kouno.

Center: K. Tagawa, K. Deguchi, T. Hata, A. Kawauchi.

Front: G. Kawahara, H. Murakami, M. Fujimoto, M. Yamamoto, Y. Takano.







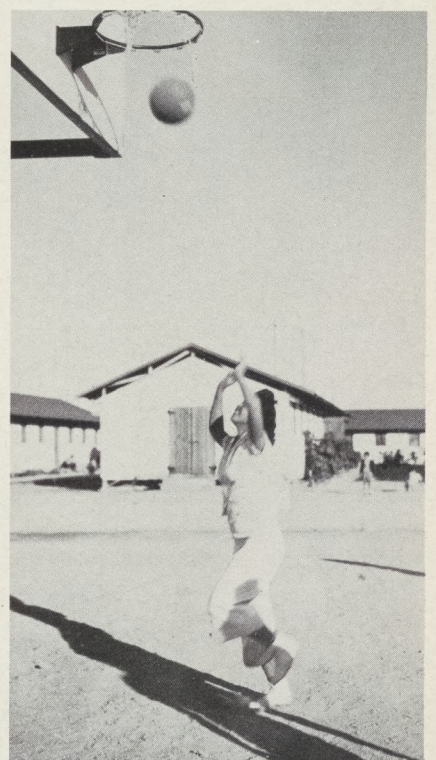
DEBUTANTES COMING-OUT PARTY



"CHECK THAT FORM!"



"OOO—OOMPH!"



"SHUCKS! MISSED AGAIN!"



"A HIT!"



"SHIZ, HOW DO YOU FIGURE OUT THE EXTRA DOGS?"





**FOR ALL**



# Our Community

---

---

---







#### BLOCK MANAGERS

Rear: Mr. F. Yanagihara, Mr. R. Sagawa, Mr. R. T. Morishige, Mr. H. Ajari, Mr. H. Kono, Mr. H. Hirotsuka, Mr. K. Yamasaki, Mr. G. Shimazu.

Front: Mr. T. Yoneyama, Mr. H. Hashimoto, Mr. S. Ishimaru, Mr. E. Kasugai, Mr. T. Yahanda, Mr. A. Aoyagi, Mr. T. Fujii, Mr. M. Umeda, Mr. R. Y. Emoto, (Not pictured) Mr. Umemoto, Mr. Sumida.



#### COMMUNITY COUNCIL

Rear: S. Horiuchi, T. Mori, M. Sano, C. Nishi, G. Fujiwara, B. Iida, B. Fukuzawa, K. Kiriwara, N. Nakagaki.

Front: F. Totsubo, G. Kawahara, F. Sasaki, M. Ando, Y. Muramatsu, E. Ishii.

(Not pictured) H. Yoshimi, G. Yokoyama.

#### Y. B. A.

Rear: Y. Shimizu, J. Imada, G. Okazaki, D. Ii.

Center: B. Matsuura, N. Matsuura, T. Oshige, I. Takayama, K. Shigaki, S. Seji, K. Takano, K. Kato, M. Hirai.



Front: K. Asamoto, N. Yasumoto, G. Kawahara, S. Mizufune, E. Shimizu, Rev. Hoto, A. Kouno, Y. Takano, E. Tara, L. Umeda, K. Kotsubo, I. Yokoyama.

#### CHRISTIAN ENDEAVOR

Rear: Y. Araki, H. Murakami, S. Matsumoto, S. Hikido, S. Murakami, M. Fujimoto.

Center: Miss C. Lancaster, A. Fujimoto, K. Sasa, J. Nishi, M. Yoshihara, A. Yahanda, M. Nakata, P. Yoshikawa, Rev. Osumi.

Front: K. Itomura, Y. Okamoto, L. Uchimoto, J. Murakami, B. Yoshikawa, M. Itomura.



#### CATHOLIC

Rear: A. Ohmaye, Father Morris, A. Ohmaye.

Front: H. Sasaki, M. Ishimine, N. Toda.







### FIRE DEPARTMENT

Y. Yamazaki, M. Kanemoto, H. Makishima, S. Handa, S. Kawakami, M. Kamigaki, A. Marutani, T. Mori, Y. Shio-moto, F. Takeuchi, G. Mito, H. Yamada.



### INTERNAL SECURITY

Rear: T. Kishi, H. Hachiya, S. Haranaga, G. Hirata, F. Fuku-zawa, E. Nakamura, N. Iwahashi, M. Morishima.  
Center: S. Wada, T. Ishii, H. Tanigawa, H. Tanaka, Z. Uci-moto, U. Ide, K. Kamigaki, N. Nakashima, H. Nishioka, G. Kitajima, K. Teraura, Y. Sato.  
Front: Y. Watanabe, L. Fukuzawa, I. S. Officer, J. G. Parson; Secretary, Y. Kotsubo; Assistant Chief Offitt; Inspector, B. Fukuzawa, F. Wakida, Y. Koda.



### NURSES' AID

Front: Y. Arakaki, C. Onomichi, B. Yamamoto, K. Kawa-moto, N. Kido, R. Hagihara, S. Heyano, K. Ryono.  
Rear: Mrs. Ito, Y. Tamada, E. Fukagawa, M. Fujimoto, M. Yoshimi, R. Matsumoto, H. Torii, M. Tsuji.



### COMMUNITY ACTIVITY SECTION

Rear: Mrs. M. Kodama, Mrs. Yanagihara, Mrs. T. Ogami, Mrs. K. Saiki, Mrs. T. Kodama, Mr. I. Hirai, Mr. T. Fuji-moto, Mr. K. Norita, Mr. Yoshimura, Mr. F. Takata, Mr. I. Taya.  
Center: Miss S. Ogawa, Miss K. Goto, Miss F. Akiyama, Miss Y. Takano, Miss J. Miura, Miss M. Ando, Miss G. Sue-chika, Miss C. Kono, Miss C. Mokuda.  
Front: Mr. Daita, Mr. F. Ichimoto, Mr. F. Totsubo, Mr. T. Yamada, Mr. G. Ichimoto, Mr. H. Nitasaka, Mr. G. Furuya, Mr. S. Yamashita, Mr. T. Oshige.

### CANTEEN I



### MESS 4







#### TREBLES

Standing: Y. Noda, L. Umeda, R. Sakamoto, M. Shiine, Y. Takano.  
Sitting: K. Kotsubo, H. Sasaki, N. Yasumoto, G. Kawahara.

## Basketball



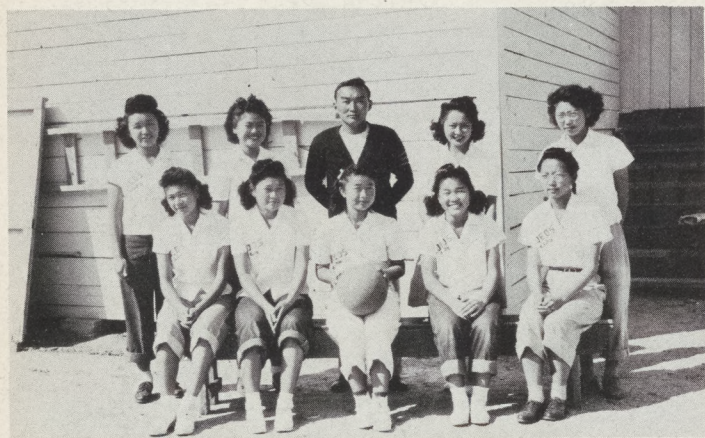
#### CHAMPS: STARLETTES

Standing: K. Yoshida, C. Matsuoka, J. Bungo, coach; M. Murayama, M. Ando.  
Sitting: F. Hamada, Y. Matsuoka, E. Bungo, captain; Y. Yoshimoto, M. Onomichi.



#### BAMBIS

M. Yamashita, S. Ichimoto, H. Tanigawa, C. Matsuura, J. Seiji, G. Ichimoto, coach.  
(Not pictured): S. Takigawa, Y. Kotsubo, Y. Takano.



#### CO-EDS

Standing: F. Tara, A. Murayama, T. Umamoto, coach; Y. Noda, Y. Ii.  
Sitting: K. Watanabe, F. Yamamoto, K. Kuwahara, L. Tanigawa, I. Takemori.



#### HIGH SCHOOL

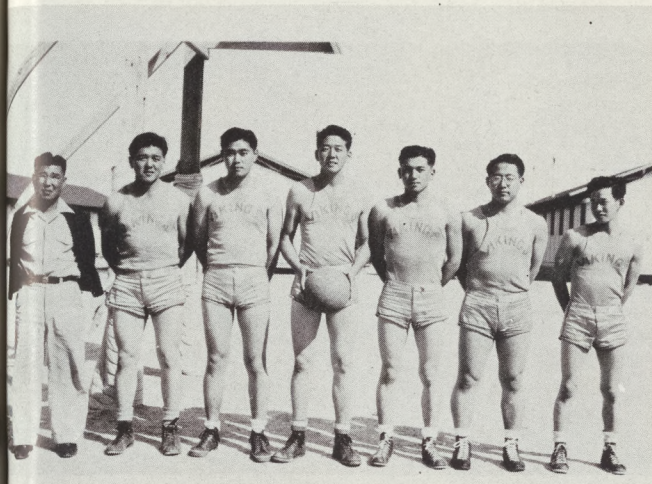
Standing: M. Egusa, S. Heyano, Y. Takano, H. Takahashi, coach; K. Deguchi, T. Uchiyama, A. Kawauchi.  
Sitting: T. Hata, A. Kouno, Y. Hirose, M. Kubota, J. Adachi, G. Kawahara.



# League and Tournament Champs



## "Aye"



**VIKINGS**

S. Yamada, manager; P. Ryono, J. Bungo, T. Ryono, H. Shiine, M. Yokogawa, Y. Yamamoto. (Not Pictured) K. Shinmoto.

## "Bee"



**ROBIN HOODS**

Standing: H. Takahashi, T. Hashimoto, S. Imazumi, G. Fruruya, coach.

Sitting: M. Hiromoto, G. Nishioka, G. Ajari. (Not pictured) K. Masuda, D. Kawahara, S. Nakagaki, T. Imura, H. Shigaki.

# League Champs

## "Junior"



**SCARLET X's**

Rear: H. Ishii, M. Takahashi, R. Fukuzawa, B. Fukuzawa, T. Yamada, T. Nishioka.

Front: G. Masaki, H. Fujimoto, M. Nakano, manager; N. Aoki, K. Nishimoto. (Not pictured) T. Ishi, coach.

## "Peanut"



**ANGELS**

Rear: M. Yamamoto, N. Oto, P. Ryono, coach; J. Adachi, S. Ohara.

Front: N. Morita, J. Ryono, H. Ogawa, H. Kajitani, T. Fujimoto.



# Festivities



"Uncle Tom's Cabin"



Queen and Her Court

Queen: K. Yasumoto

Attendants: K. Ryono, Y. Matsuoka

C. Yoshikawa, T. Tokimoto.



Christmas Holiday

Harvest Festival



Harvest Carnival

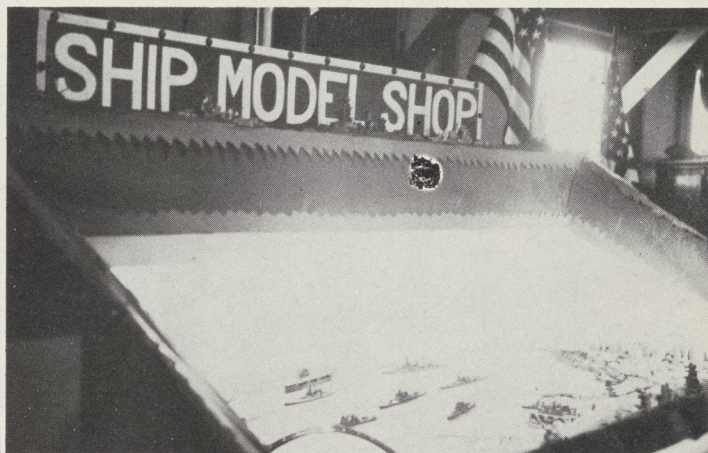




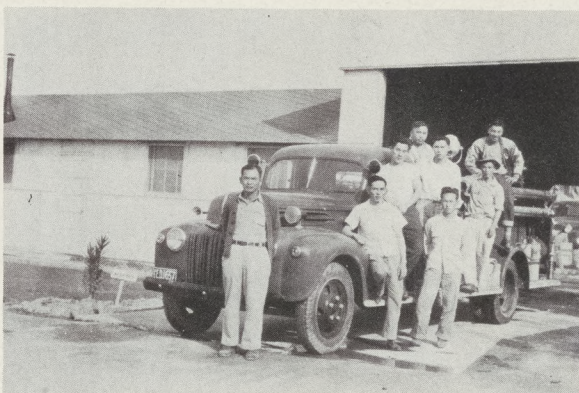
# Canal Tour



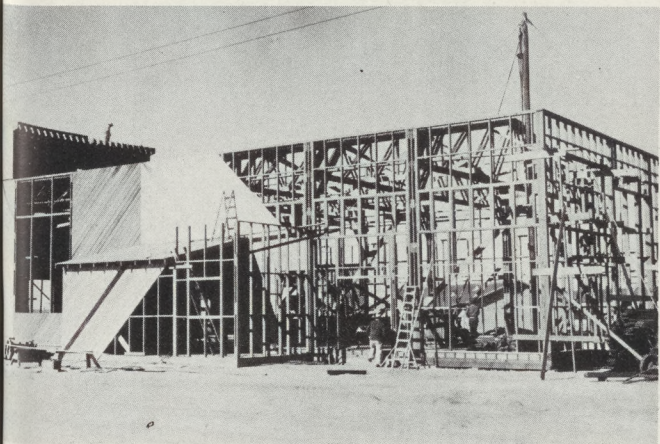
Residence



Ship Model Exhibit



Firemen



Auditorium Under Construction



Packing Shed



ACKNOWLEDGEMENTS

Mr. McVey

Faculty

Helen Tanigawa

Mr. Slate and the Publication Art Club

The Co-op for making it possible for us to publish  
the last four pages.













**HIGH SCHOOL AUDITORIUM**



# MURRAY HIGH SCHOOL





