

H 2.89:3

3 of 3

1945

67/14  
C



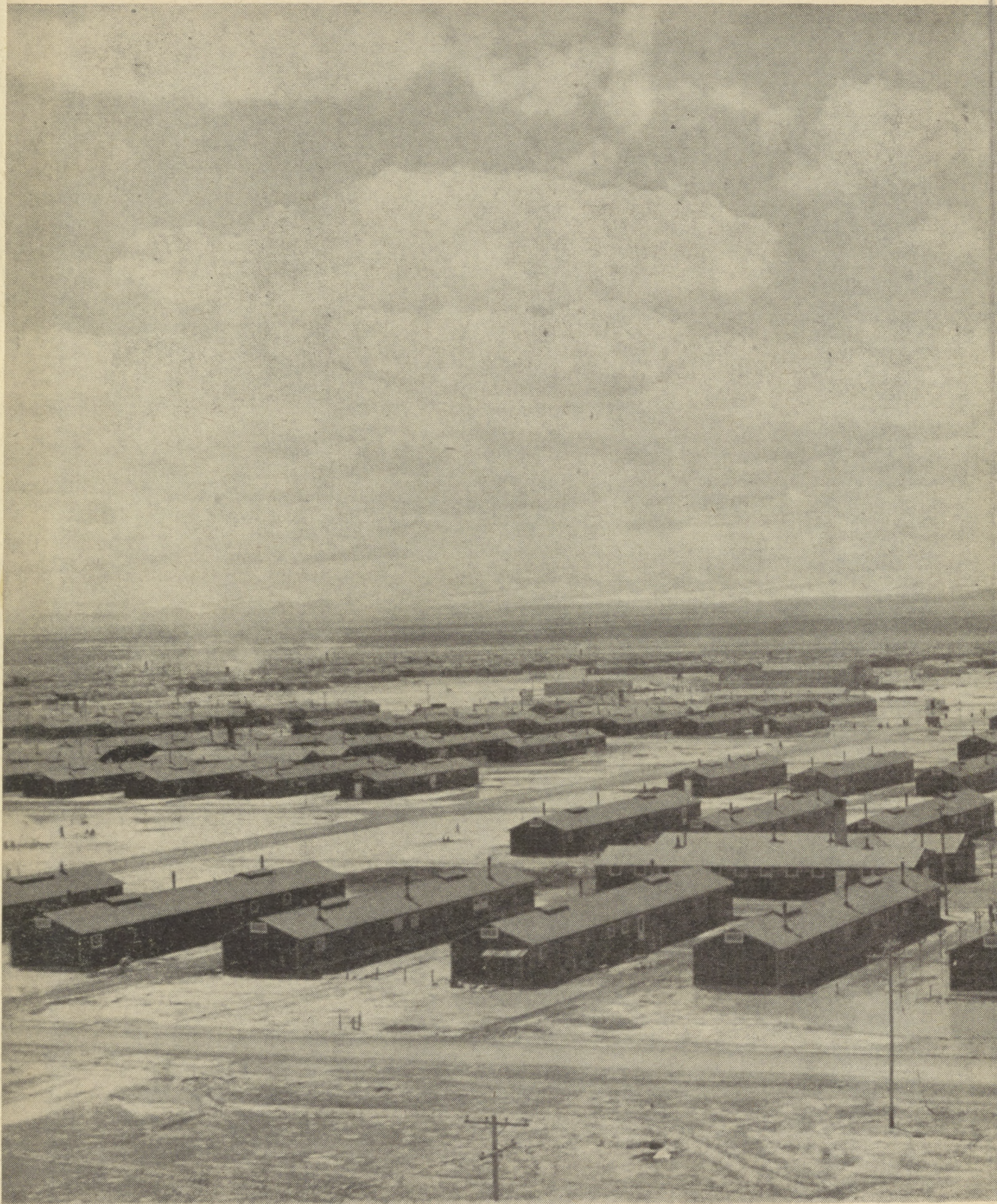
'45

*Ramblings*

T



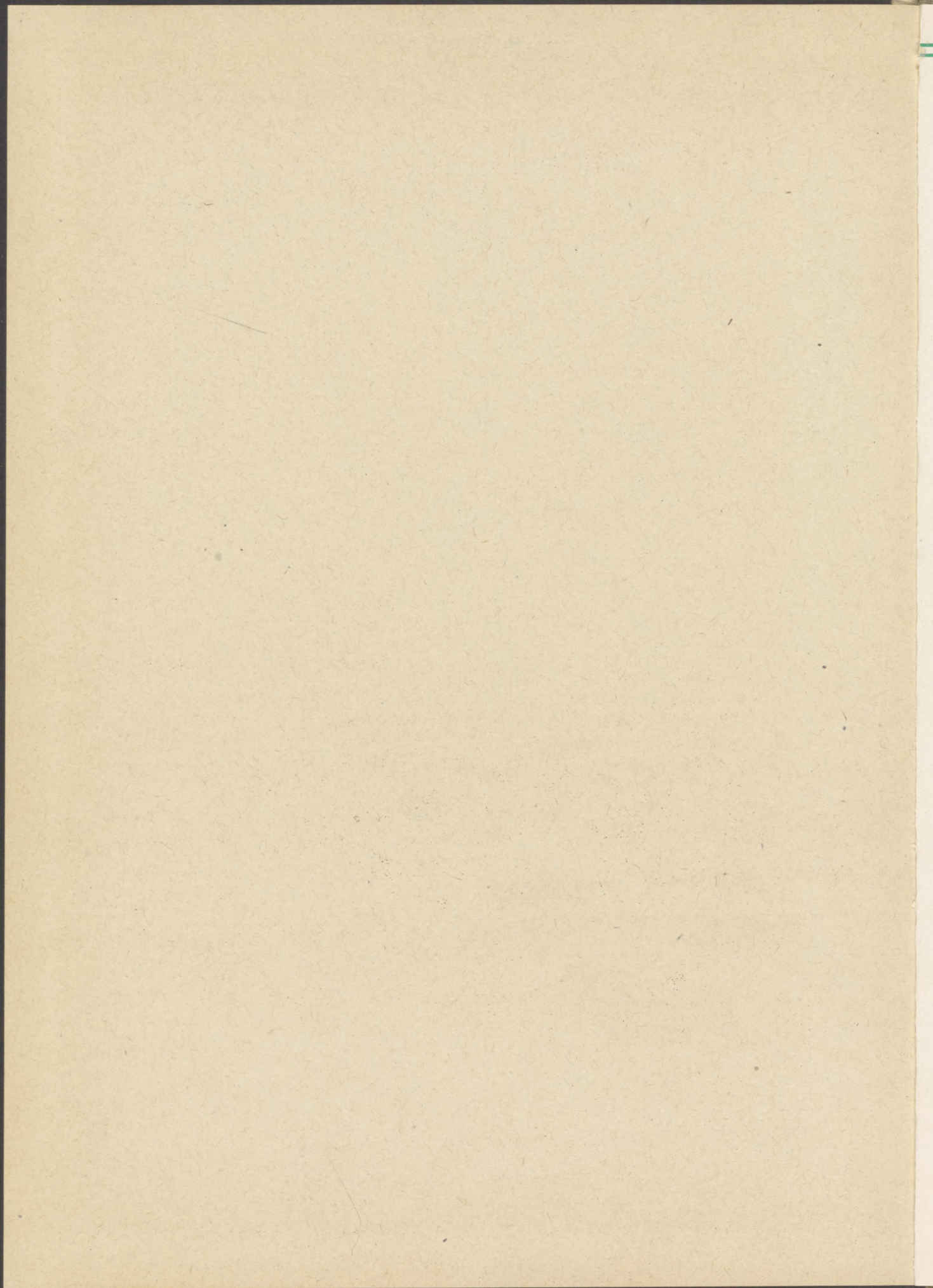
WRA Library Washington



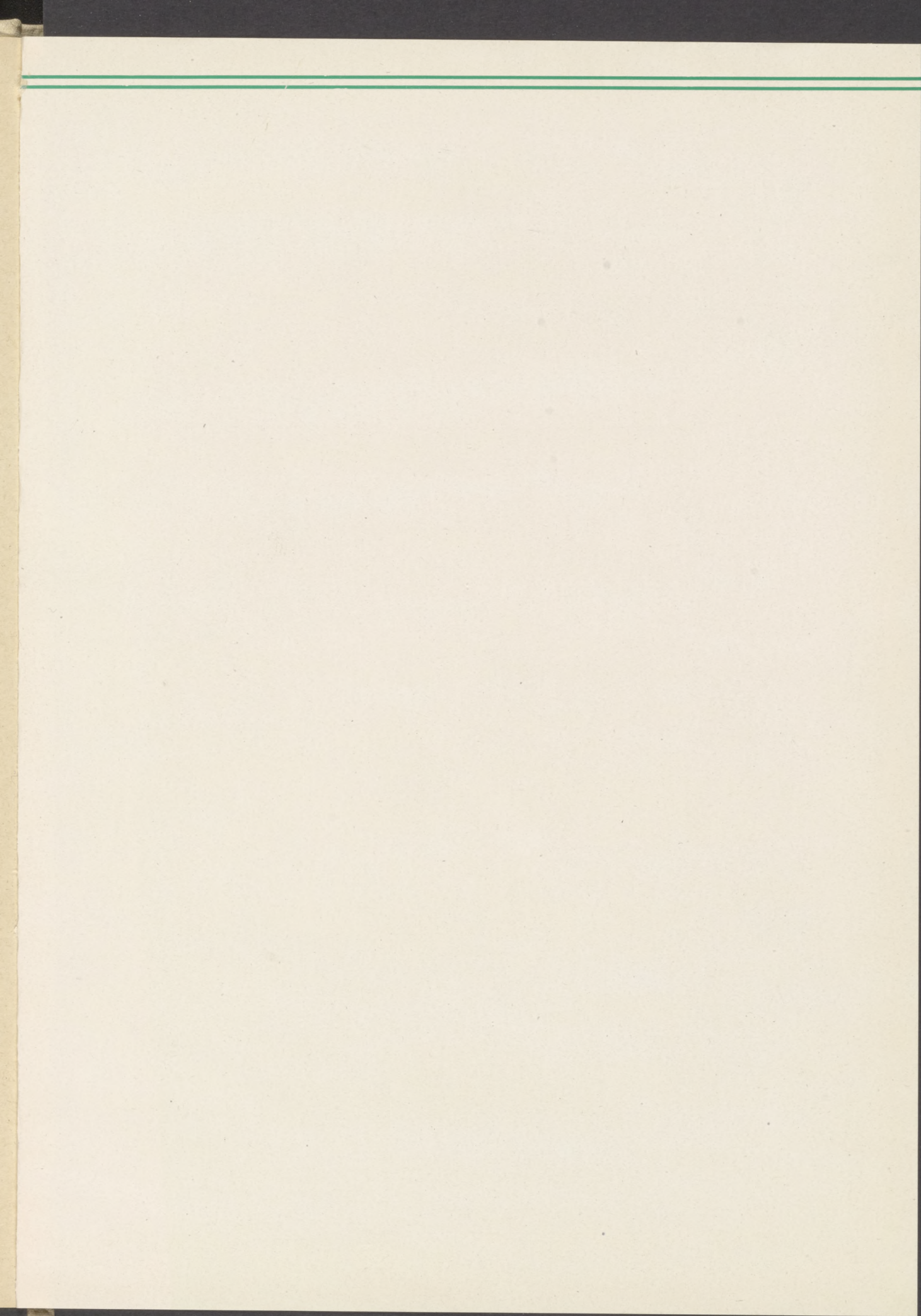




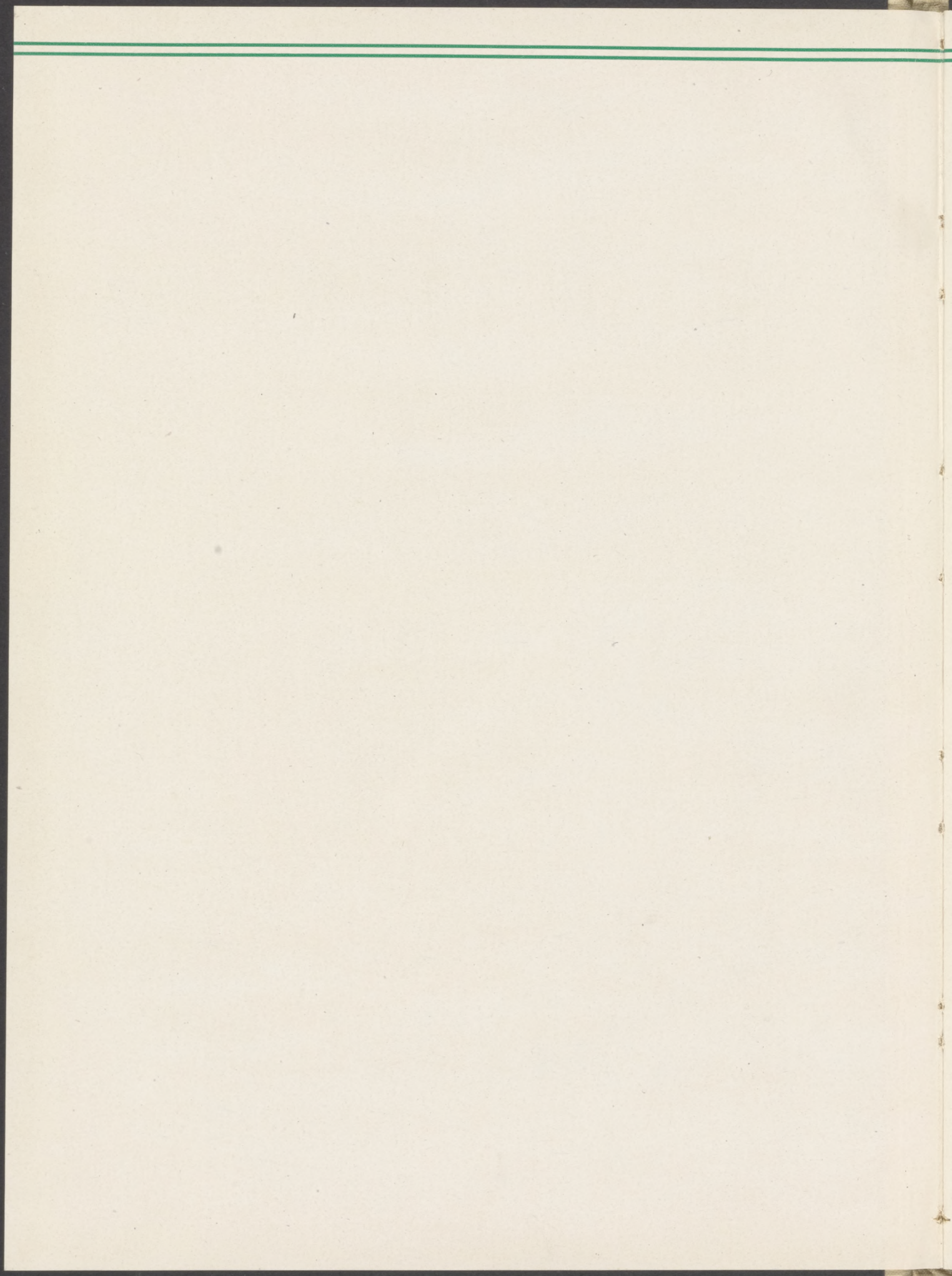














'45

# RAMBLINGS

September, '44 --- June, '45

*Volume Three*

*Published by*

THE '45 RAMBLINGS STAFF

*of*

The Associated Students of the Topaz High School

*Topaz, Utah*



# FOREWORD

The third year has been completed; the fifth and sixth graduating classes of Topaz High School have been recorded.

These three years have meant more to us than any other period we have known. Starting us with a school composed of students from all walks of life, from Washington, Oregon, and California, we have been amalgamated into one united body. But now the day has come when we again must scatter far and wide back into normal society, to Chicago, Bangor, San Francisco, to any of the forty-eight states.

We have prepared ourselves during these years for that day of relocation. The time is here and we are ready. This book is a record of the extent toward which we have succeeded in our preparation.

Participation in numerous school activities, school government, and various athletic programs, though but part of our preparation, will undoubtedly prove to be of invaluable aid to us in later life. Perhaps of greater significance, however, is the far-reaching implication that they hold, that of hastening the realization of our goal—LEADERS OF TOMORROW.





# DEDICATION

Italian foxholes . . . Northern wastes . . . Eastern jungles . . .  
No Man's Land . . .

The brilliant record of American soldiers with Japanese faces in these and other countless scenes of battle has been recorded forever in the annals of history. Exploits of the fighting Nisei . . . incalculable risks incurred . . . devotion to duty despite any challenge . . . have earned for them the proud title of one of the best fighting outfits in the United States Army.

These recipients of innumerable medals, decorations, citations and other honors from the president and their commanding officers, are fighting a unique war . . . unique in the sense that their objective is twofold. Not only do they fight for the principles their country is striving to uphold, but also they battle the forces of prejudice. By proving their loyalty to our democracy and let it be understood that their role has been vital . . . they are paving the way toward a future wherein Japanese Americans will meet complete understanding and tolerance.

It has been a costly struggle to win these objectives, one that has demanded the lives of thousands of Nisei, and the sweat and toil of thousands of others who have suffered immeasurably in the various theaters of war.

To these valiant soldiers who have paid and are yet paying this tremendous price, we humbly dedicate our book, the '45 Ramblings.



Despite the abnormal conditions of our desolate community, our faculty members have established through their untiring efforts and unselfish devotion a foundation for our future advancement toward our goal—

LEADERS OF TOMORROW



# ADMINISTRATION









L. T. HOFFMAN

*Project Director*

To The Leaders of Tomorrow:

In a new and very real sense you are the leaders of tomorrow, not only for a particular group of people, but for all those people who look forward to the future with hope, faith and confidence that the principles of freedom and tolerance will be available to all.

Congratulations on your outstanding achievement to date and the best of success to you in the future.

L. T. HOFFMAN,

*Project Director*



R. P. SANFORD

*Assistant  
Project Director*



L. G. NOBLE

*Superintendent  
of Schools*





DR. L. C. BANE  
(Principal)

War—prosperity—depression—war. This has been the endless cycle during the history of man. The challenge to each succeeding generation is to learn how to reassemble its broken world into a pattern so firm and so fair that war cannot be possible. “All we can do is fumble and try once more—try out of the memory of our anguish—and be as tolerant with each other as we can.”

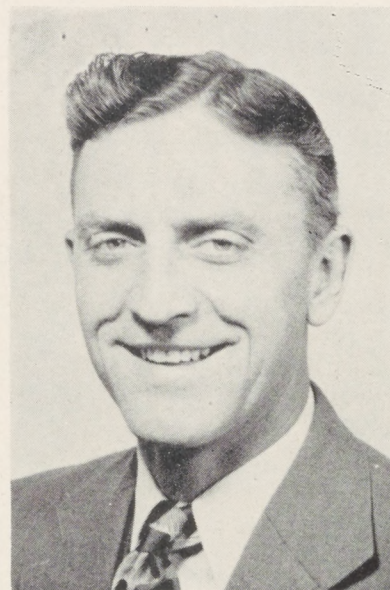
DR. L. C. BANE

## Principal's Message

## Vice-Principal's Message

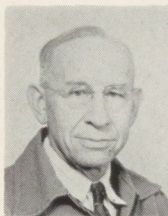
Another school year has neared its completion and we are that much nearer our goal of peace and living as usual once more. The students of Topaz High School who have worked diligently are that much more prepared to face the life that the future holds for them. I am sure they can look back upon their work of the closing semester with satisfaction and they can look toward the future with determination to carry on for all the high ideals that are symbolic of education.

J. E. SMITH



J. E. SMITH  
(Vice-Principal)





ANDERSON



BISHOP



CRANE



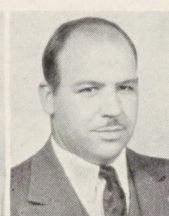
CROSBIE



DINGLEY



GERARD



HARRIS



HENDERSON



HUDSON



ISHIDA



KUSUNOKI



LOOMIS



MAGGIORA



MANABE

# FACULTY



From left to right: Tsumura, Asakura, Sakuyama, Kamba, Kawamoto, Hideshima, Nagata, Mayeda.





MATZKIN

MERRILL

MERRILL

OSTLUND

OSTLUND

PALECEK

SEAL



SHARVY

SMITH

TAMAKI

TAMURA

TATSUNO

TOMIOKA

WATANABE

# FACULTY



TOP: Ogawa, Kitagawa, Sonoda, Egashira.

BOTTOM: Hotta, Nakahira, Kaku.



Our graduates of 1945 have achieved through commencement the first step toward their goal. Though their number has been greatly decreased, their spirit of comradeship has united them throughout their high school years. The obstacles having been surmounted, they can proudly look back with fond memories on the experiences they have shared and the countless activities they have enjoyed.



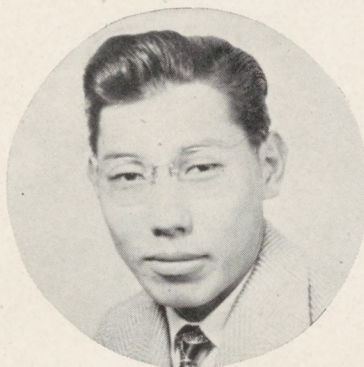
# SENIORS

*Twelve*







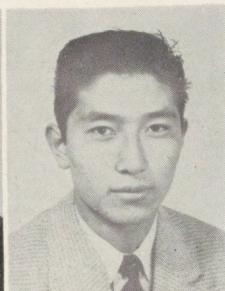


ICHIRO OZAWA  
*President*

JURO HAYASHIDA  
*Vice-President*



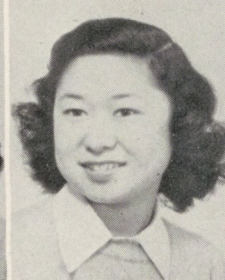
JUNJI DOAMI  
*Vice-President*



ASAKO MARUYAMA  
*Secretary*



MARY TSUCHIYA  
*Treasurer*



#### SENIOR SOCIAL COMMITTEE

TOP: Juro Hayashida, Toshiaki Sakaguchi, Joe Suyemoto.

MIDDLE: Betty Hayashi, Sadame Hara, Clara Mabuchi, Seiko Akahoshi, Alice Tsujisaka, Mariko Shinoda.

BOTTOM: Yutaka Yoshida, Ichiro Ozawa, Masaru Sumimoto, Shizuo Namba.



*Fourteen*



# Class of January, 1945

The graduating class of January, 1945, whose numerous successful activities have been due in no small measure to the excellent leadership of Ichiro Ozawa, Juro Hayashida, and Asako Maruyama, respectively their president, vice-president, and secretary-treasurer, will have in the future the cherished memory of many a job well done.

Commencing these activities with a class party on November 24th, Juro Hayashida presiding, the group moved on to its most succesful function of the year—Senior Week.

The memory of this week of January fourteenth to the nineteenth will flourish long. The able chairmanship of Johnny Miyagawa guided it into smooth channels.

Baccalaureate exercises, with Takeko Doi as mistress of ceremonies, came first, and were followed by the senior banquet held in Delta. An added enjoyment to the latter, for which the co-chairman were Naomi Kitagawa and Johnny Miyagawa, was the witnessing of a motion picture. Then came the eagerly anticipated Senior Ball! Chairman Toshiaki Sakaguchi's dynamic leadership helped make this a tremendous success.

But the most memorable occasion of all was—graduation! On January nineteenth, nineteen hundred and forty-five, thirty-eight seniors, proudly attired in the traditional caps and gowns, received the diplomas which certified the completion of high school. Elsie Itashiki presided, and the speakers included Takeko Doi and Ichiro Ozawa.



## SENIOR GRADUATION COMMITTEE

TOP: Tak Doi, Naomi Kitagawa, Elsie Itashiki, Asako Maruyama, Clara Mabuchi.

BOTTOM: Juro Hayashida, Joe Suyemoto, Ich Ozawa, Toshiaki Sakaguchi.

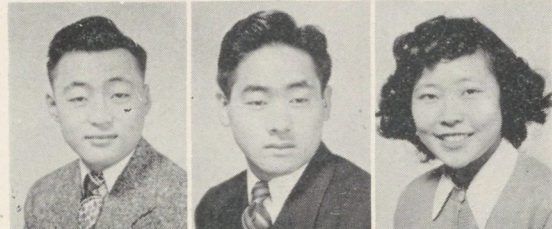




SUMIYE AKIYOSHI, Berkeley, Calif.  
*Commercial major; stenographens future.*

TAK DOI, San Francisco, Calif. *Commercial major; plans commercial art future.*

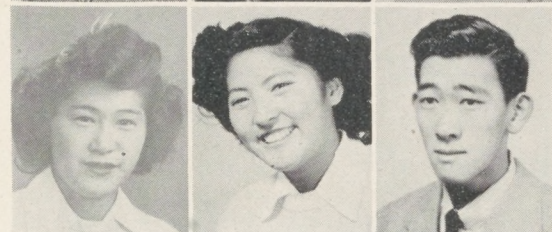
TOMI ENDOW, Berkeley, Calif. *Interested in tailoring.*



YASUMITSU FURUYA, Oakland, Calif.  
*History major; future of cinematography.*

JURO HAYASHIDA, Berkeley, Calif.  
*Science and math major; going to college.*

LILLIAN YETSUKO HIROSE, Berkeley, Calif. *Commercial major and future.*



TERUKO KATHRYN E. HITOMI, Hayward, Calif. *Science major; future lab technician.*

NATSU IKEDA, Berkeley, Calif. *Science major; entering science field.*

SHIGERU ISHIHARA, Sacramento, Calif.  
*Math and science major; college-bound.*



ELSIE CHIZUKO ITASHIKI, San Francisco, Calif. *Commercial major; future singer.*

TERUKO KANEKO, Palo Alto, Calif.  
*Math and science major.*

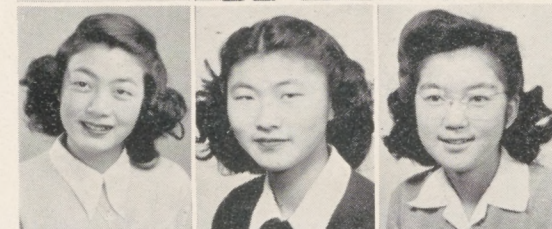
KEIKO KANZAKI, San Francisco, Calif.  
*History major; journalist's future.*



SHIZUKO KASHIWABARA, San Francisco, Calif. *Commercial major.*

TOMOYE KATAYAMA, Oakland, Calif.  
*Commercial major; will attend business college.*

SACHI KINOSHITA, Oakland, Calif.  
*Commercial major; to attend fashion school.*



NOAMI KITAGAWA, San Francisco, Cal.  
*Commercial major; secretar's future.*

CLARA MABCHI, El Cerrito, Calif.  
*Language major; college-bound.*

ASAKO MARUYAMA, San Francisco, Calif. *Commercial major; college-bound.*



JOHN MIYAGAWA, Auburn, Wash. *Auto machine major; plans to be a mechanic.*



KAZU NAO, San Francisco, Calif. *Business major; future secretary.*

DOROTHY NOMURA, Auburn, Calif. *Commercial major; to attend business college.*

EMILY OSUGI, San Francisco, Calif. *Math and language major; future teacher.*

FRED OTSUJI, Clarksburg, Calif. *Science major; to be future diesel mechanic.*

ICHIRO OZAWA, Berkeley, Calif. *Math major; future in aeronautics.*

JIM MASAACKI SAKAGUCHI, San Francisco, Calif. *History major.*

TOSHIAKI SAKAGUCHI, San Francisco, Calif. *History major; to enter photographic field.*

YAEKO SATO, Oakland, Calif. *Commercial major; to seek higher education.*

ELLEN SETSUKO SHIMADA, Sacramento, Calif. *Science major; to attend college.*

HARVEY M. SHIMADA, Clarksburg, Calif. *Language major; future radio technician.*

MARIKO SHINODA, Berkeley, Calif. *Science major; to attend college.*

JOE SUYEMOTO, Berkeley, Calif. *Math major; to attend college.*

MICHI TAKAHASHI, Mt. Eden, Calif. *Commercial major; future Cadet Nurse.*

AIKO TAKITA, San Francisco, Calif. *Science major; to enter college.*

MARY TAMAKI, San Francisco, Calif. *Math and science major; to be a chemist.*

LILY TAMURA, Sacramento, Calif. *Commercial major; to attend business college.*

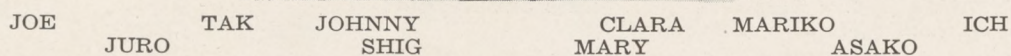
YUMI TSUGAWA, Berkeley, Calif. *College prep.; to be a dietician.*

AILEEN MIDORI YAMATE, San Francisco, Calif. *History major; future educator.*

SHIZUE YOSHIURA, Oakland, Calif. *Commercial major; to be a costume designer.*

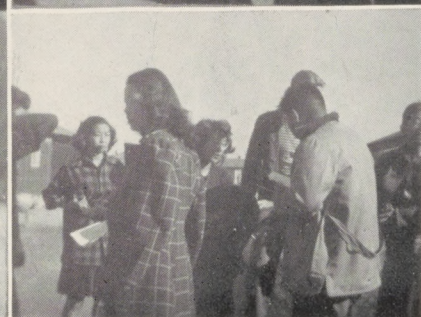






Most popular boy .....	JOE SUYEMOTO
Most popular girl .....	TAKEKO DOI
Most all-around boy .....	ICHIRO OZAWA
Most all-around girl .....	MARIKO SHINODA
The outstanding athlete .....	JOHN MIYAGAWA
Sweetest of the sweeter girls .....	ASAKO MARUYAMA
Most likely to succeed .....	JURO HAYASHIDA
Cutest of the cuter girls .....	CLARA MABUCHI
Brainiest of the brainier boys .....	SHIG ISHIHARA
Brainiest of the brainier girls .....	MARY TAMAKI





Four legs? ?

Aw! Go on, that isn't me!

The boys seem interested!

Our literary staff.

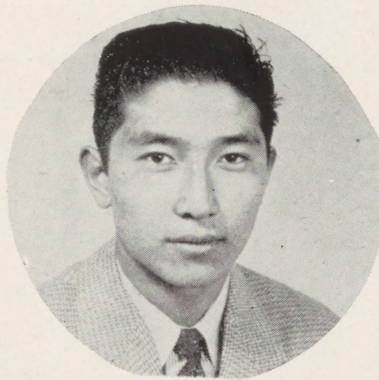
Look out! Miye's mad!

Model??

Cute twosome!

Aw! Look at my grades!



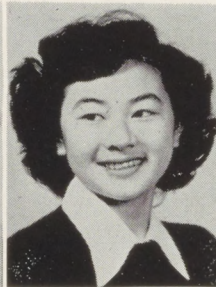


JUNJI DOAMI, *President*

BETTY HAYASHI  
*Vice-President*



DOROTHY HARADA  
*Vice-President*



AMY HIRONAKA  
*Secretary*



HARRY KAWABATA  
*Treasurer*



#### SENIOR SOCIAL COMMITTEE

STANDING: Dorothy Harada, Sadame Hara, Yoshiko Keikoan, Martha Oshima, Alice Tsujisaka, Chiyo Date, Betty Hayashi, Amy Hironaka.

KNEELING: Richard Yamashiro, Michio Suzuki, Bob Utsumi, Tats Sano, Clem Nakai, Ray Sonoda, Kiyoshi Ogo.





# CLASS OF JUNE, 1945

Reminiscing over the last eventful year in Topaz High School, the class of June, '45, congratulates itself on a successful year of school activities, scholastic and social.

Special praise is due to Junji Doami, president; Betty Hayashi, high senior vice-president; Dorothy Harada, low senior vice-president; Amy Hironaka, secretary; Harry Kawabata, high senior treasurer; and Joe Morita, low senior treasurer, for their efforts in helping to keep the class united.

The pioneering class of Topaz may well be proud of its record of leadership in sports throughout the years.

Hi-lite of the gridiron for the seniors was their decisive victory over the rest of the school in the first half of the term. Leading the pigskin parade were Junji Doami, Masaru Sumimoto, Juji Hada, Joe Kimura, Kiyoshi Ogo, George Okawachi, Roy Kawamura, Takara Inouye, and Paul Bell.

Basketball, too, felt the mighty weight of the seniors with Akio Nakata, Junji Doami, and Masaru Sumimoto hitting the hoops for the school.

Yoshiko Keikoan, Emi Nagasawa, Natsu Ikeda, Amy Yamada, Mits Shimamura, and Yuki Tsuchihashi represented the seniors in girls' sports.

The only class having the distinction of receiving its high school education solely in Topaz, these students were the last to receive their diplomas in the short-lived history of Topaz High School.

As these graduates scatter far and wide to all corners of this country to pursue their individual careers, and attain new heights in achievement, they will be able to look back with pride upon the days of Topaz High School when they were members of that mighty class of June, nineteen hundred and forty-five.



## SENIOR GRADUATION COMMITTEE

From Left to Right: Seiko Akahoshi, Yutaka Yoshida, Sadame Hara, Harry Kawabata, Mary Tsuchiya, Ryoza Kumekawa, Betty Hayashi, Juji Hada, Jean Sanford, Junji Doami.





EDITH ABEY, Mountain View, Calif. *History major; first ambition to relocate.*

SEIKO AKAHOSHI, Oakland, Calif. *Science major; college-bound.*

WASCO AKITA, North Dalles, Wash. *Commercial major; future clerk.*



TOSHIKO AOYAGI, Alameda, Calif. *History major; to attend college.*

KEN ASAZAWA, Newcastle, Calif. *Science major; to enter trade school.*

ROSE ASOO, Sacramento, Calif. *History major; commercial future.*



ISAO BABA, Centerville, Calif. *Majored in mechanics; future welder.*

PAUL BELL, Berkeley, Calif. *Math and science major; future scientist.*

JUNJI DOAMI, San Francisco, Calif. *Math major; to attend college.*



CARVIN DOWKE, Centerville, Calif. *English major; college-bound.*

JUNE EGASHIRA, Centerville, Calif. *Commercial major; to attend business college.*

HANAKO FUJII, Hayward, Calif. *English and history major; to attend college.*



MARY FUKADA, Berkeley, Calif. *History major; future dietitian.*

WARREN FUKUHARA, Sacramento, Calif. *Commercial major.*

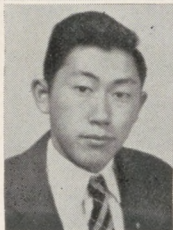
MIYEKO FURUSHO, Centerville, Calif. *History major; to enter nursing field.*



JUJI HADA, San Francisco, Calif. *History major; to enter college.*

SADAME HARA, San Francisco, Calif. *Science major; intends to be a social worker.*

YOSHI HARAMAKI, Hayward, Calif. *Science major; future biologist.*



ROY HAMACHI, Centerville, Calif. *Math and science major; to study electronics.*



NOBUTOSHI HATASHITA, Terminal Island, Cal.  
*Social science major; to continue school.*

BETTY HAYASHI, Sacramento, Calif. *Science major; college-bound.*

KAZUKO HIDESHIMA, San Francisco, Calif.  
*Typing major; to go to college.*

KAY ICHISAKA, Irvington, Calif. *Science major; college-bound.*

KIMIYE IHARA, San Francisco, Calif. *Art and language major; to go to college.*

RUBY IKEDA, San Francisco, Calif. *Tailoring major; wants to relocate.*

FRED K. IKENOYAMA, Clarksburg, Calif. *Wants to become a radio technician.*

TAKARA INOUE, Oakland, Calif. *Majored in math; college-bound.*

KUMI ISHIDA, Irvington, Calif. *Science major; to enter the nursing field.*

TATSUKO ITO, Davis, Calif. *Commercial major; future stenographer.*

MARY IWAKI, San Francisco, Calif. *Academic course; to attend college.*

JANET IWASAKI, Sacramento, Calif. *Commercial major; to become a secretary.*

EDWARD IWATA, Sacramento, Calif. *Art major; plans to relocate.*

HARRY HIDEHARU KAWABATA, San Leandro, Calif. *Math and science major; future engineer.*

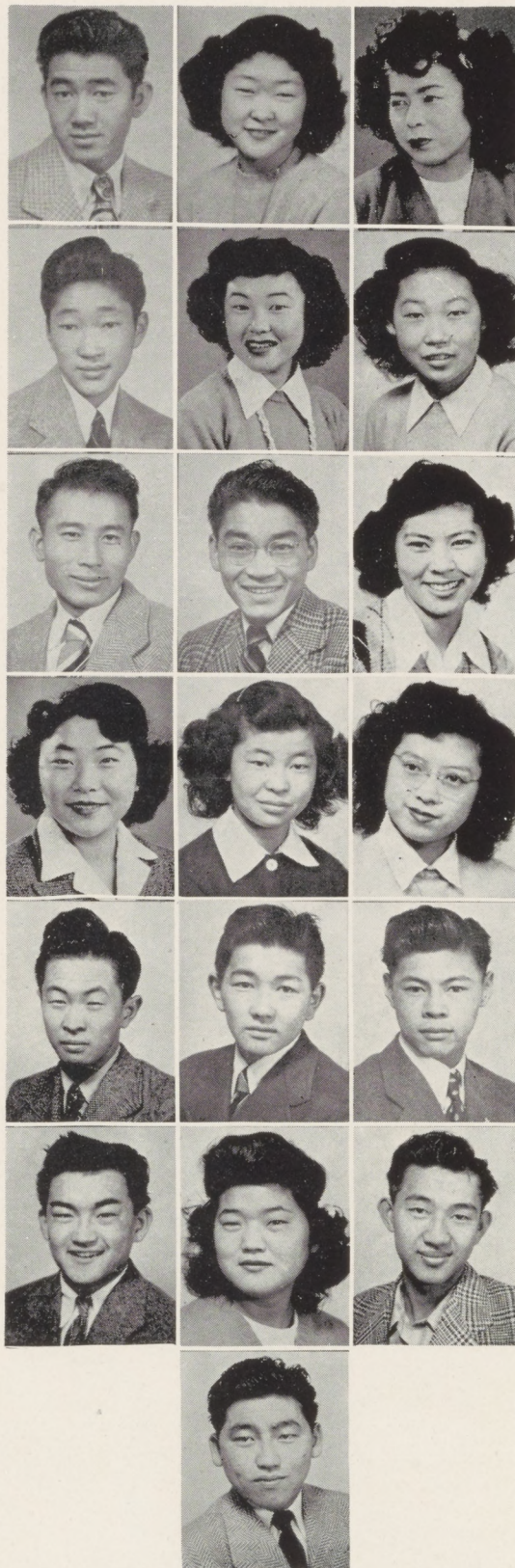
SHIGERU KAWAMOTO, Auburn, Calif. *Vocation major; plans to relocate.*

ROY KAWAMURA, Sacramento, Calif. *Plans to find his future in his major, mechanics.*

YOSHIKO KEIKOAN, Sacramento, Calif. *Commercial major; future in cosmetology.*

ERNEST KIKUCHI, Sacramento, Calif. *Language major; to attend college.*

JOE KIMURA, San Francisco, Calif. *Social science major; to attend college.*



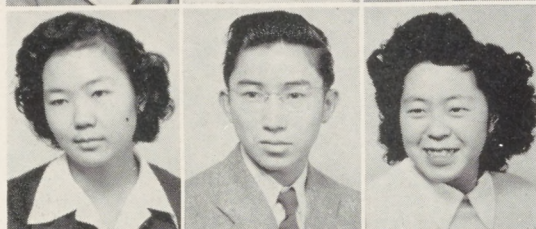




TATSUE KIYOMURA, Newark, Calif. *Clothing major; future seamstress.*

NATSUKO KAWATA, Palo Alto, Calif. *Commercial major; future stenographer.*

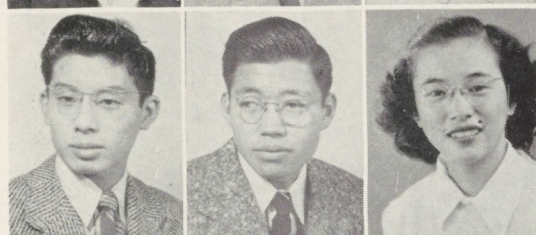
SATOI KENMOSTU, Alameda, Calif. *Science major; plans to attend college.*



AYAKO KOBAYASHI, San Mateo, Calif. *Clothing major; to be a seamstress.*

HARUMI KOJIMOTO, San Francisco, Calif. *History major; sportswriting future.*

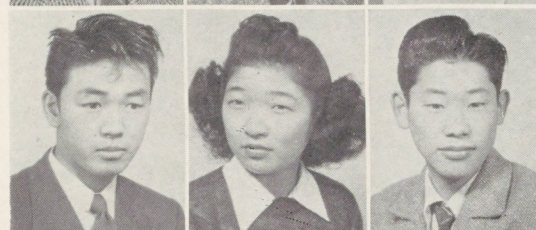
TOMIKO KUMAGAI, Alameda, Calif. *Commercial major; to prepare for stenographic work.*



RYOZO KUMEKAWA, San Francisco, Calif. *Math and science major; college-bound.*

ISAMU KUWAHARA, Pescadero, Calif. *Math major.*

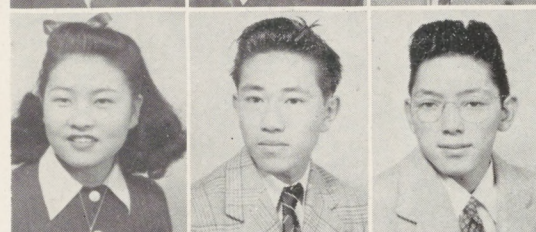
RURI MARUBAYASHI, Alameda, Calif. *Commercial major; to attend business college.*



TOMMY MASUDA, Irvington, Calif. *Social science major.*

MARY MATSUMOTO, Berkeley, Calif. *Commercial major; wants to attend business college.*

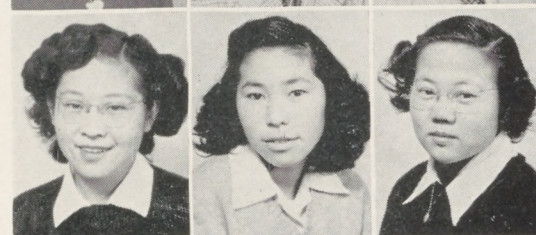
YOSHIO MATSUNAMI, Sacramento, Calif. *Social science major.*



YAYOE MATSUSHITA, San Francisco, Calif. *Took social science as her major.*

TAKESHI MIZOTA, San Francisco, Calif. *History major; future artist.*

MASAYOSHI NAGAMOTO, San Francisco, Calif. *Science major.*



FLORENCE NAGANO, Sacramento, Calif. *Math and science major; future bio-chemist.*

EMI NAGASAWA, Sacramento, Calif. *Social science major; enter business college.*

KIKO NAKAGIRI, Medford, Oregon. *Science major; college-bound.*



RITSUKO NAKAHIRA, Sacramento, Calif. *Math and science major; to continue with schooling.*



HIROKAZU NAKAI, San Francisco, Calif. *History major; to learn the art of baking.*

ROSE NAKAMOTO, Loomis, Calif. *Commercial major; to prepare for stenographic work.*

BETTY NAKAMURA, Holualoa, Hawaii. *Home economics major; future beautician.*

HENRY T. NAKAMURA, San Jose, Calif. *Math major; college-bound.*

JAMES MASAAKI NAKAMURA, Irvington, Calif. *Science and auto mechanic majors.*

AKIO NAKATA, Alameda, Calif. *Science major; will go on to college.*

SHIZUO NAMBA, San Francisco, Calif. *Science major; to attend college.*

JIM MASAKI NODA, Alameda, Calif. *Science major; will be an architect.*

EUGENE NODOHARA, Lincoln, Calif. *Took commercial major to prepare for the future.*

YOKO OGATA, San Francisco, Calif. *Commercial major; college-bound.*

AGNES OGAWA, San Francisco, Calif. *To attend college.*

WICHI OHARA, Santa Cruz, Calif. *English major; plans to relocate.*

HIRO OKADA, San Francisco, Calif. *Auto mechanics major; aviation future.*

GEORGE SHIGEKAZU OKAWACHI, Martinez, Calif. *Science major; college-bound.*

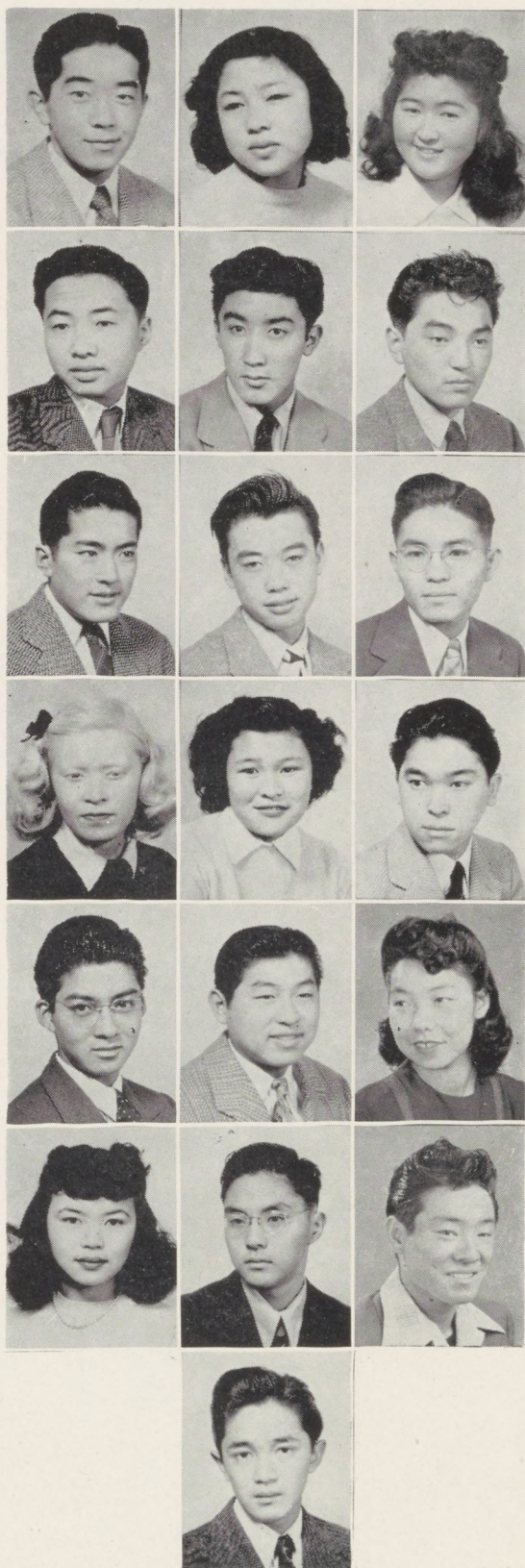
KAZUE OKU, Centerville, Calif. *Clothing major; to be a beautician.*

FUMIKO H. OKUMOTO, Sacramento, Calif. *To continue commercial major.*

PAUL KUNIO ONO, San Francisco, Calif. *Math and history majors; college-bound.*

KIYOSHI OGO, San Leandro, Calif. *Social science major; to be an auto mechanic.*

HIROSHI OTA, Sacramento, Calif. *History major; to be a mechanic.*







TERUMI OTSUKI, Hayward, Calif. *Science major; plans to be a nurse.*

FUMI SAIKI, San Mateo, Calif. *Language major; college-bound.*

JEAN SANFORD, Chicago, Illinois. *Science major; to attend college.*

RICHARD SANJO, Sacramento, Calif. *Science major; plans to become a welder.*

TAKEO SASAKI, Sacramento, Calif. *Commercial major; radio technician's future.*

LENA SATO, Auburn, Wash. *Commercial major; plans to attend college.*

RUBY SATO, Sacramento, Calif. *Science major; to attend college.*

YOSHIO SHIMADA, Alameda, Calif. *Mechanic major; to be auto mechanic.*

MITSUOKO SHIMAMURA, Oakland, Calif. *Commercial major; to enter business college.*

JUNE SHIMOSAKA, San Francisco, Calif. *History major; college-bound.*

PEGGY SHIOZAWA, Oakland, Calif. *English major; fashion designer's future.*

YUKI SONODA, San Francisco, Calif. *Business major; future secretary.*

MASARU "WACKY" SUMIMOTO, Oakland, Calif. *History major.*

SHIGEKO SUZAWA, Alameda, Calif. *History major; plans to be a good wife.*

HIDETOSHI TAKAHASHI, Oakland, Calif. *Science major; to attend college.*

MARY TAKAHASHI, Tacoma, Wash. *Home economics major.*

TOKI TAKAHASHI, Mt. Eden, Calif. *Commercial major; beautician's future.*

WILLIAM TAKAHASHI, Belmont, Calif. *English major; aeronautic future.*

KAORU TAKAKI, San Francisco, Calif. *English major; to attend college.*



TERUYO TAMURA, Redwood City, Calif. *Commercial major and future.*

YUKIYE TSUCHIHASHI, San Francisco, Calif. *English major; college-bound.*

MARY MERIKO TSUCHIYA, Alameda, Calif. *English major; to attend college.*

ALICE TSUJISAKA, Sacramento, Calif. *Commercial major and future.*

TAKA DAISY UYEDA, Oakland, Calif. *English major; stenographer's future.*

AMY YAMADA, Sacramento, Calif. *Science major; college-bound.*

HENRY YAMANAKA, Warm Springs, Calif. *Science major; mechanic's future.*

RICHARD TOMOYOSHI YAMASHIRO, Berkeley, Calif. *Science major and future.*

HERBERT HARUTO YAMATE, San Francisco, Calif. *Math major; doctor's future.*

KIYOKO YOSHIDA, Uashon Island, Wash. *Commercial major; bookkeeper's future.*

YUTAKA "TUBBY" YOSHIDA, San Francisco, Calif. *Math and science major; college-bound.*

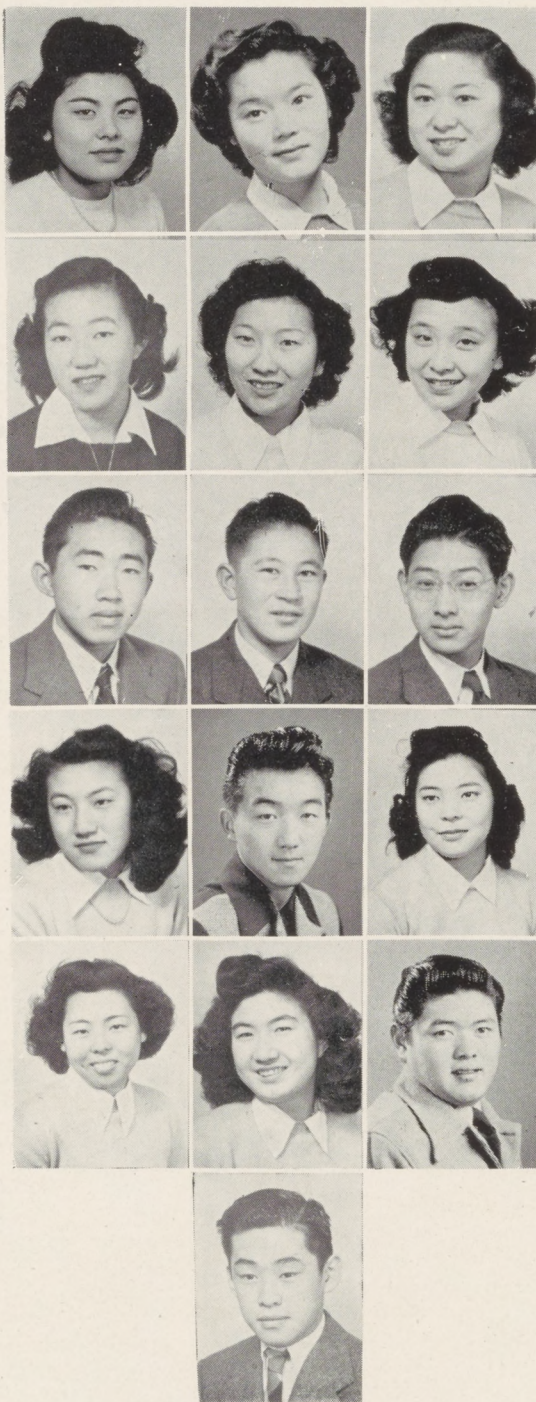
YAEKO YOSHIFUJI, Pescadero, Calif. *Commercial major; to attend business college.*

PATTY YOSHINO, Sacramento, Calif. *Commercial major; to attend college.*

HIROKO YOSHIWARA, Oakland, Calif. *Commercial major; to attend college.*

HARRY YUKI, Salinas, Calif. *Shop major; to enter field of mechanics.*

AKIO T. TAKAI, San Francisco, Calif. *Auto mechanics major; aviation future.*







SADAME "CLEM" "JOKER" GEORGE  
"ROSIE" "JAYDEE"

YUKI  
"BUBBLES"

AMY HARRY FLORENCE  
MARY

## SO PROUDLY WE HAIL — SPRING TERM

Most popular boy .....	HIROKAZU NAKAI
Most popular girl .....	JUJI HADA
Most all-around boy .....	SADAME HARA
Most all-around girl .....	JUNJI DOAMI
The outstanding athlete .....	YOSHIKO KEIKOAN
Sweetest of the sweeter girls .....	GEORGE OKAWACHI
Most likely to succeed .....	MARY TSUCHIYA
Cutest of the cuter girls .....	RYOZO KUMEKAWA
Brainiest of the brainer boys .....	YUKI TSUCHIHASHI
Brainiest of the brainier girls .....	HARRY KAWABATA
	FLORENCE NAGANO
	AMY YAMADA







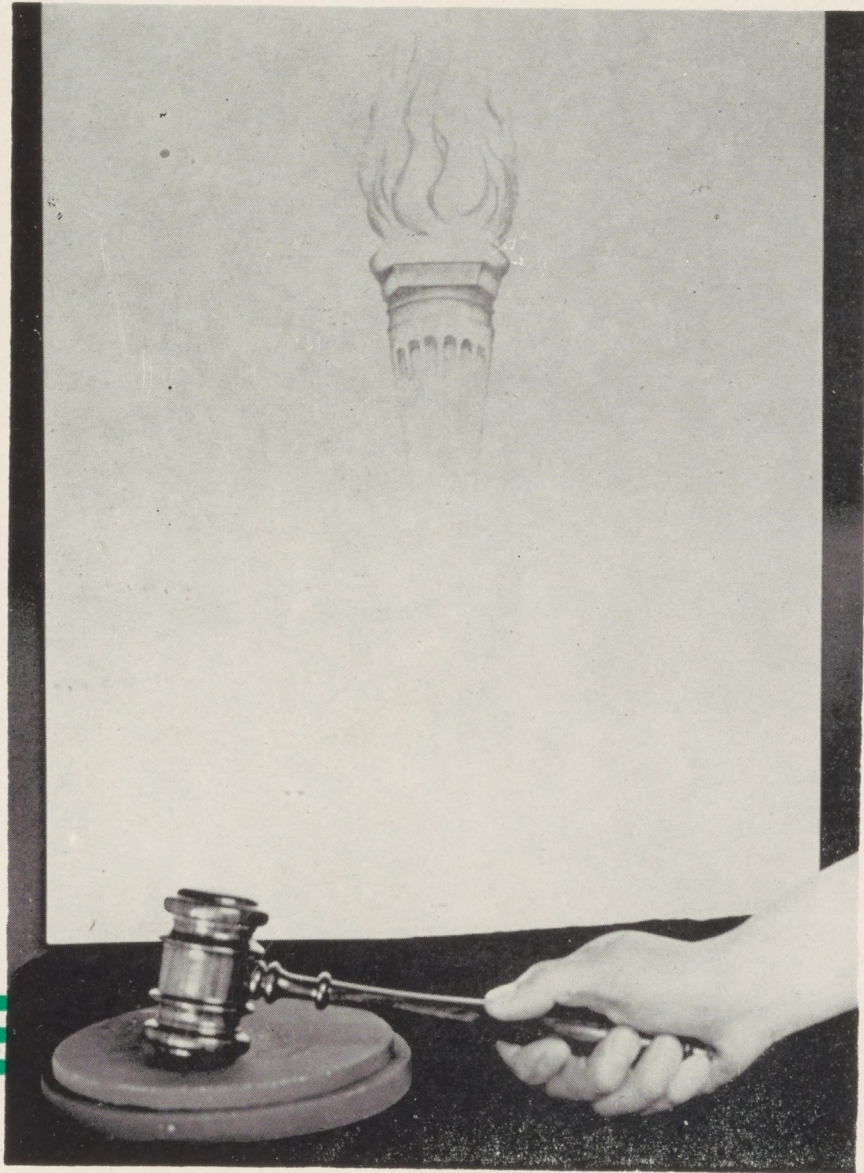
The leaders of tomorrow are the students of today, who are equipping themselves for future challenges by participating in our school government—a network of executive, legislative and judicial groups administering the functions of Topaz High School.



# STUDENT GOVERNMENT

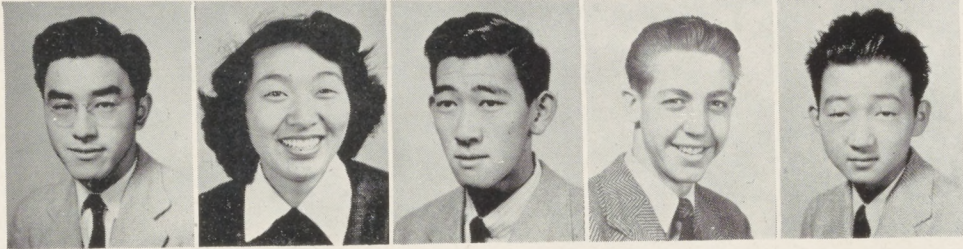
*Thirty*







# EXECUTIVE



HADA

DOI

HARA

AKAHOSHI

OZAWA

SUZUKI

SANO

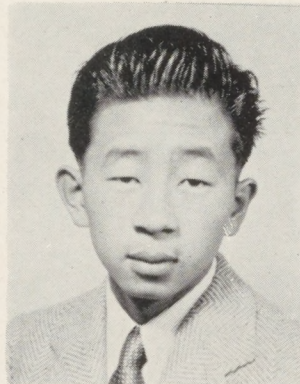
SHINODA

ISHIHARA

BELL

SUYEMOTO

F A L L



F A L L

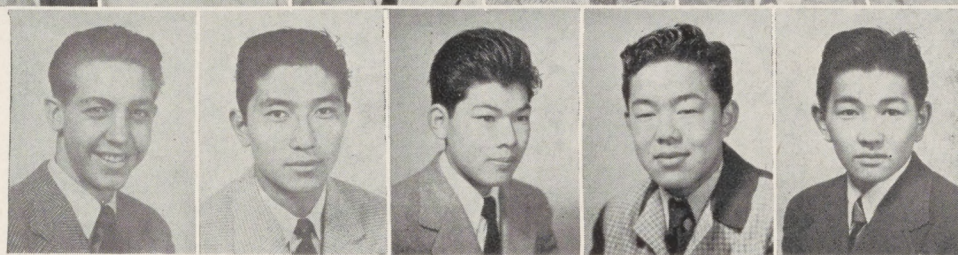
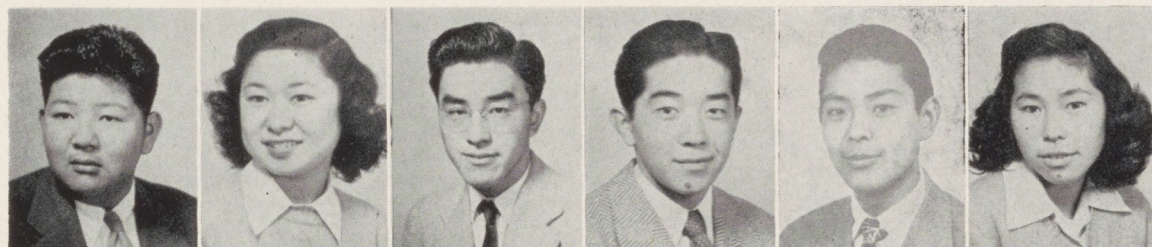
SUYEMOTO

Plunging into the planning of an active term with confidence and ambition, the 1944 Council overcame the many difficulties that accompany each new semester's appearance, and emerged finally with many successfully realized projects to its credit.

Outstanding among these undertakings were the presentation of rallies and assemblies, and the achievement of several measures of advantage to the entire student body.



# COUNCIL



Suzuki

Tsuchiya

Sano

Nakai

Hada

Nagasawa

Bell

Doami

Oshima

Sato

Kawabata



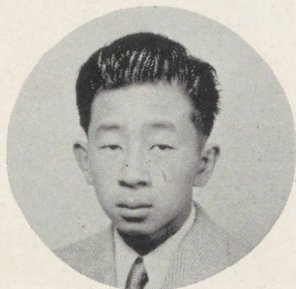
KumeKawa

Acting as the hub of the wheel of student government, the Executive council of the 1945 Spring term earnestly strove to execute and actuate successfully the two main provisions of the Constitution: the definite control of all student activities and the creation of unity among its members in promoting the association's best interests.

The competent students, who, as members of the council, capably satisfied these standards, were Ryoza KumeKawa as president, Michio Suzuki as vice-president, Mary Tsuchiya as secretary, Tatsuo Sano as treasurer, Hirokazu Nakai as yell leader, Juji Hada as B. A. president, Emi Nagasawa as G. A. president, Paul Bell as editor-in-chief, and Junji Doami, Togo Oshima, and Ken Sato as presidents of the Senior, Junior, and Sophomore classes, respectively.



# REPRESENTATIVE



JOE SUYEMOTO

## Fall

With the capable leadership of Joe Suyemoto, the Student Representative Council attained its objective of promoting a stable medium between the student body and the executive committee. In addition to conforming with the constitutional duties, the problems of amalgamation of the Junior High with the Senior High, of the failing assemblies and activity program, of enforcing disciplinary measures, of deciding whether to abolish the Student Representative Council, and of the verification of the eligibility of a candidate for a student body office confronted the council. Though the fall term was significant for its overwhelming problems, it also showed marked progress in the development in our governmental functions.

BOTTOM: S. Hara, M. Shimizu, T. Doi, S. Yoshiura, M. Shinoda, R. Asoo, S. Akahoshi, T. Wada.

MIDDLE: K. Saito, M. Suzuki, M. Yoshimori, D. Harada, B. Hayashi, R. Kumekawa, Y. Orite, K. Ito.

TOP: Y. Yoshida, S. Ishihara, I. Ozawa, T. Sano, B. Utsumi, J. Suyemoto, T. Oshima, Y. Sugiyama, L. Suyemoto, J. Hada.

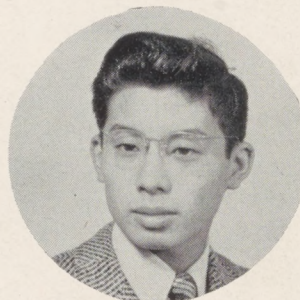




# COUNCIL

## Spring

The Student Representative Council for the Spring term, like that of Fall, consisted of one representative elected from each Social Science class, the Executive Committee, and the presidents and vice-presidents of the Sophomore, Junior and Senior classes.



RYOZO KUMEKAWA

Under the leadership of chairman Ryozo Kumekawa, the S. R. C. took an active part in school government by acting as a legislative body and as an intermediary between students and executives. The S. R. C. members strived to keep the students informed on all matters concerning the student government, and kept the teachers and student leaders informed as to the sentiments of the students.

The members of this council deserve credit for their important role in helping to keep the school activities running smoothly.



BOTTOM: M. Hidekawa, A. Tamaki, G. Mori, B. Hayashi.

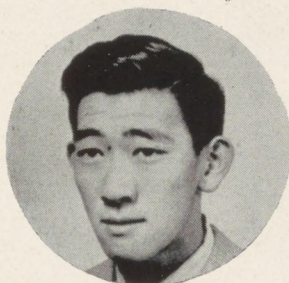
MIDDLE: D. Harada, N. Takahashi, R. Uyeda, M. Tsuchiya, K. Yamasaki.

TOP: J. Hada, I. Yamasaki, T. Oshima, T. Yamashiro, H. Nakai, Y. Sugiyama, B. Kikuchi, M. Suzuki, J. Doami.



# JUDICIARY

## Fall



SHIGERU ISHIHARA

RYOZO KUMEKAWA

JURO HAYASHIDA

JOE SUYEMOTO

YUTAKA YOSHIDA

FLORENCE NAGANO

SEIKO AKAHOSHI

LEE SUYEMOTO

SETSUKO ASANO

CHESTER KAKU



The Student Judiciary Council, the guardian of our constitution, started the Fall semester determined to maintain the high standard of the functioning of student government.

This body, formerly known as the Student Affairs Committee, handles the conflicts arising in the interpretation of our constitution, cases referred by the administrative officers of this school, and recommendations for the betterment of this school and individual students.

Consisting of ten outstanding members of the associated students, Seiko Aka-hoshi, Setsuko Asano, Juro Hayashida, Shig Ishihara, Chester Kaku, Ryoza Kume-kawa, Florence Nagano, Joe Suyemoto, Lee Suyemoto, and Yutaka Yoshida, the council had not underestimated its importance and proceeded to fulfill all duties with high efficiency. It paved the way for the Topaz chapter of the National Honor Society; kept watch over all actions taken by the Executive Council, Representative Council, and school clubs and organizations; considered the eligibility of each candidate running for a student body office; and performed many other tasks necessary to prevent constitutional violation.



# COUNCIL

## Spring



LEE SUYEMOTO

ROSE ASOO

ASAKO NARAHARA

SETSUKO ASANO

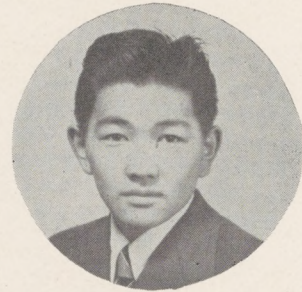
YUKIKO IWASA

AMY YAMADA

MITSUO ISHIHARA

MAY TAKAKUWA

CHESTER KAKU



HARRY KAWABATA

The reins of the S. J. C., an inestimable segment of our student government, were once again earnestly taken over by ten competent members to conduct the significant duties of the constitution committee. These students continued to emphasize the importance of sustaining the high standards in managing governmental and constitutional practices.

The council exercised the powers to pass jurisdiction over all measures ratified by the Executive Council and the Student Representative Council. All cases involving students were referred to this council.

Under the capable chairmanship of Harry Kawabata and the council composed of Setsuko Asano, Roe Asoo, Mitsuo Ishihara, Yukiko Iwasa, Chester Kaku, Asako Narahara, Lee Suyemoto, May Takakuwa, and Amy Yamada, another successful term of the Student Judiciary Council was wound up with the accomplishment of its principal objective—to assist in properly construing the constitution.



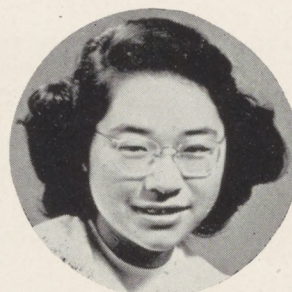
# ACTIVITIES

## Fall

Topaz High School has always enjoyed an educational program which included diversions as a further element in instruction and a step toward the promotion of good social habits.

The Student Activities Committee has competently led the school social functions under the able chairmanship of Vice-president Sadame Hara. Though the duties of those holding positions on this committee were complex, they diligently and indefatigably surmounted difficulties and presented the eager student body with a well-balanced activity program.

Through the boundless efforts of the Student Activities Committee, the student body has enjoyed outstanding movies, successful assemblies and various efficiently organized activities. Because of the coordinating ability of the committee, its foremost accomplishment was the ever present feeling of mutual cooperation and appreciation among students.



SADAME HARA

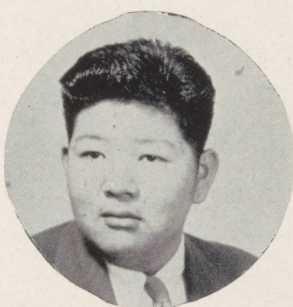


BOTTOM: Nancy Takahashi, Miye Yoshimori, Sadame Hara, Amy Hironaka.

TOP: Robert Utsumi, Ichiro Yamasaki, Junji Doami, Ichiro Ozawa, Togo Oshima, Juro Hayashida.



# COMMITTEE



MICHIO SUZUKI

Motivated by the high spirit of the students, the committee's initial sponsorship was that of the traditional Inaugural Ball, the success of which proved a substantial reward for their conscientiousness.

Owing to the creative minds among the members, the ultimate yield of the committee's earnest efforts was the well organized assemblies, entertaining current movies and spirited student participation in many enjoyable activities.

## Spring

Perpetuating the policies of the efficient Fall committee, the Spring Student Activities Committee, headed by the popular and thoroughly capable Vice-President Mickey Suzuki, emerged one of the most active organizations striving satisfactorily to serve the student body.

BOTTOM: Amy Hironaka, Hirokazu Nakai, Juji Hada, Sadame Hara.

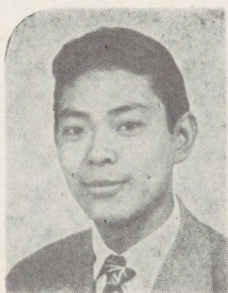
MIDDLE: Michio Suzuki, Dorothy Harada, Nancy Takahashi, Amy Tamaki, Betty Hayashi, Grace Mori, Joe Morita.

TOP: Kiyoshi Ogo, Tak Eshima, Shizuo Namba, Robert Utsumi.





# RALLY



JUJI HADA

## Fall

Always one of the most industrious and popular groups of the school is the Rally Committee.

The Rally Committee members, seeming to possess an inexhaustible supply of energy, have devoted hours in preparation of the auditorium for assemblies, movies, and other student body functions. They have also uncomplainingly undertaken the task of taking down chairs and blankets and cleaning the gym after such activities.

These boys merit the utmost appreciation and recognition of their efforts by all for their valuable contribution of cheerful spirit and willing assistance towards the betterment of our school.

BOTTOM: Thomas Hirano, Hirokazu Nakai, Juji Hada, Masaru Sumimoto, Yutaka Yoshida, Junji Doami, Harry Yuki.

TOP: Chester Morizono, Tom Okai, Ray Sonoda, Dick Katayanagi, Masayoshi Nagamoto, Roy Kawamura, Joe Kimura, Shoji Sakurai.





# COMMITTEE

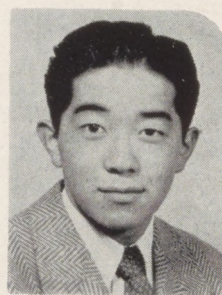
## Spring

The Spring Rally Committee, taking up the lead of the highly efficient members of the Fall term, continued to equal the unexcelled record of their predecessors.

Those who were given the coveted positions were diligent, reliable, and observant of their innumerable duties.

Proving to be one of the outstanding groups on school functions, this committee consisted of Chairman Hirokazu Nakai, Juji Hada, Robert Utsumi, Tatsuo Sano, Roy Sonoda, Sei Hirose, Junji Doami, Ichiro Yamasaki, Sakae Horita, and Kenji Nagasawa.

Following the splendid example of the yell leader, Hirokazu Nakai, the boys completed a highly active and successful term.



HIROKAZU NAKAI



BOTTOM: Juji Hada, Hirokazu Nakai, Masaru Sumimoto, Joe Kimura.

TOP: Sei Hirose, Junji Doami, Roy Iwata, Jiro Nakamura.



With the close of another successful Topaz school year—our last—we realize how closely approaches the next step toward our goal. The class organizations of Topaz High School, as an integral part of our institution, have amply provided the students with the rudiments of social living and have prepared them to become—

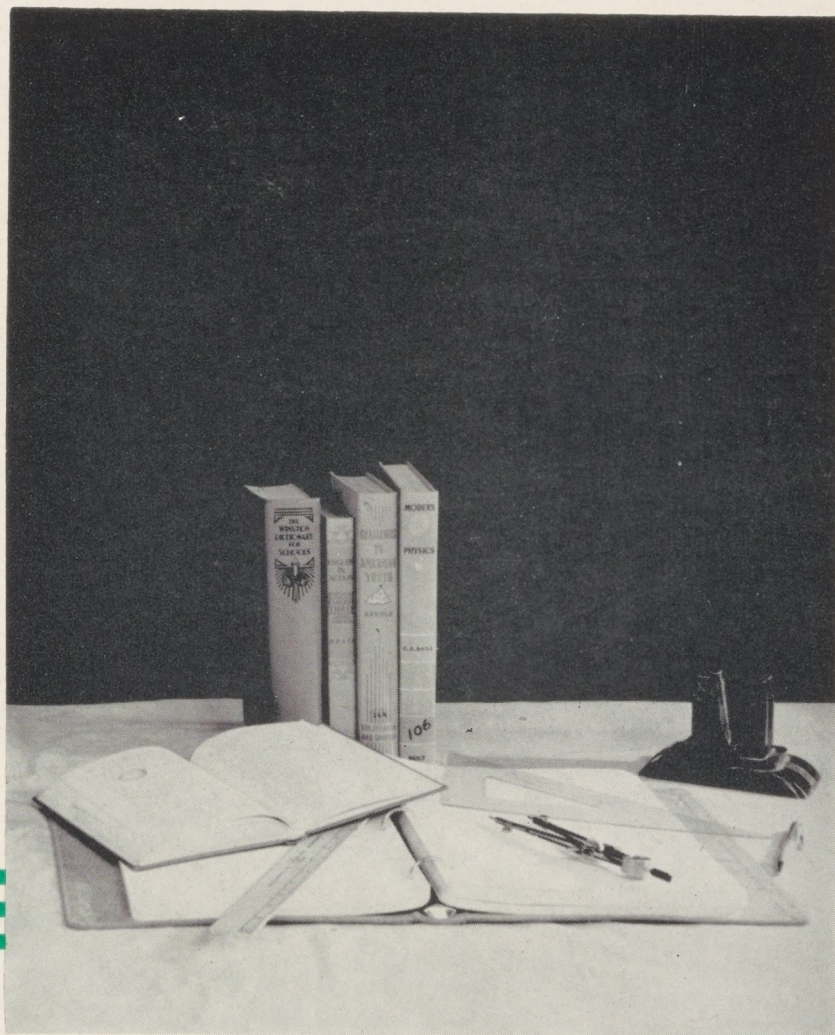
LEADERS OF TOMORROW



# CLASSES

*Forty-two*





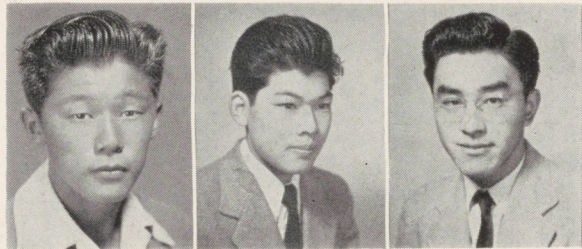


# JUNIOR



SUZUKI

## Fall



UTSUMI

OSHIMA

SANO

Maintaining the junior class tradition by competing valiantly with the seniors for leadership of the school in activities and outstanding men, the junior class showed up well as a highly significant part of Topaz High School.

Our distinctive third-year men have upheld their prestige with their presentation of the traditional Junior Prom; this "Crystal Paradise" was acclaimed a huge success. Following the Junior Prom on the social calendar were the Christmas assembly and the class party. Both were enjoyed immensely by all who participated.

The casaba and grid teams were greatly indebted to the juniors for their vital

## JUNIOR SOCIAL COMMITTEE

BOTTOM: Rose Uyeda, Chiyo Date, Dot Harada, Mihoko Shimizu, Amy Hironaka.

MIDDLE: Sets Yamane, Tom Okai, Bob Utsumi, Mickey Susuki, Togo Oshima, Ray Sonoda, Nancy Takahashi.

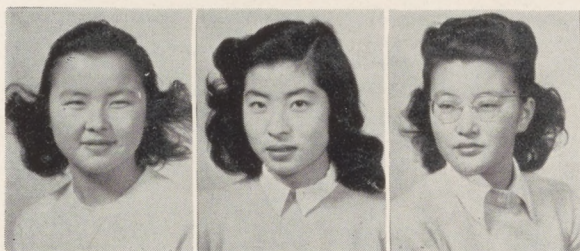
TOP: Thomas Hirano, Kei Nakano, Tats Sano, Hid Kashima, Joe Morita.





# CLASS

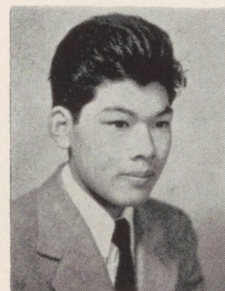
## Spring



SHIMIZU

TAMAKI

TAKAHASHI



OSHIMA

contribution of capable players.

Capably led by Mickey Suzuki, Bob Utsumi, high vice-president, Togo Oshima, low vice-president, Tats Sano, secretary-treasurer, Chester Kaku, historian, and Mr. C. D. Bishop, the class advisor, the junior class of fall, 1944, has completed a semester of lasting memories.

The spring, 1945, juniors elected as their officers Togo Oshima, president, Nancy Takahashi, high vice-president, Amy Tamaki, low vice-president, and Mihoko Shimizu, secretary-treasurer. The highlights of the social calendar were the Junior Prom, class party, and assembly.

### JUNIOR SOCIAL COMMITTEE



BOTTOM: Alice Matsuhara, Nancy Takahashi, Rose Uyeda.

MIDDLE: Thomas Hirano, Togo Oshima, Hid Kashima, Kei Nakano, Shoji Sakurai.

TOP: Grace Matsumoto, Aru Keikoan, Flo Mino, Mits Sato, Sets Yamane, Amy Tamaki.



## High Junior Class



BOTTOM: Amy Hironaka, Keiko Yoshiura, Chiyo Date, Martha Oshima, Tatusko Ozaki, Dorothy Harada, Mary Hironaka, Misao Masunaga, Hatsuye Aoyagi.

MIDDLE: Tatsuo Sano, Michio Suzuki, Ichiro Yamazaki, Jimmy Takahashi, Ray Sonoda, Robert Utsumi, Joe Morita, Chester Kaku.

TOP: Mr. Bishop, Dick Katayanagi, Susumu Iwasa, Sakae Horita, George Kobayashi, Somao Ochi, Tosh Kawabata, Dewey Fujii.





BOTTOM: F. Okuno, M. Takahashi, A. Baba, R. Yano, A. Mori, M. Shimizu, S. Yamane, K. Baba, A. Yoshida, G. Shinosaki.

MIDDLE: R. Uyeda, J. Yoshizuka, T. Sonoda, K. Nakano, K. Mayeda, H. Kashima, T. Oshima, L. Katow, M. Tsugawa, Mr. Bishop.

TOP: T. Okai, S. Ono, I. Nao, J. Goto, H. Tajima, R. Mizuhara, K. Kimura, H. Sakashita, D. Sasaki, M. Katsura.

## Low Junior Class



BOTTOM: H. Miyamura, A. Sunada, S. Takaha, H. Yoshii, S. Maruyama, R. Hirabayashi, B. Dote, R. Hanamoto

MIDDLE: M. Morita, M. Yamada, T. Okai, B. Oku, J. Fukami, T. Okawachi, K. Yuto, F. Sasaki.

TOP: G. Abey, Y. Orite, Y. Sato, M. Minemoto, T. Tsutsui, J. Tsuboi, A. Hirota, Mr. Bishop, T. Iwamoto, S. Narikawa, G. Hashimoto, G. Goto.





BOTTOM: L. Tsuchida, D. Kanemasu, D. Sakita, N. Shintaku, Y. Ito,  
S. Hamasaki, M. Akiyama, T. Takahashi, M. Kawaguchi, M. Motooka.

MIDDLE: M. Yamaguchi, M. Nakatani, J. Takahira, T. Sakakura, R.  
Iwata, H. Shin, R. Tanihara, S. Honda, E. Ishida, J. Nishimoto.

TOP: N. Kansaki, M. Kawaguchi, M. Sato, Mr. Bishop, M. Yoshimori,  
A. Matsuhara, M. Yoshida.

## Low Junior Class



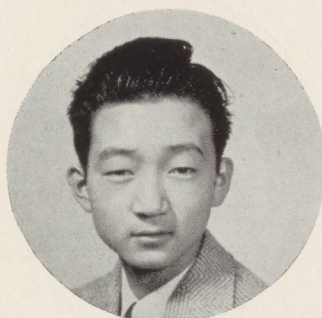
BOTTOM: C. Shimada, M. Furuya, L. Kitani, L. Muneno, G. Anderson,  
L. Fukuhara, L. Fujiwara, E. Ishida.

MIDDLE: H. Ito, T. Matsui, T. Wada, E. Hayamizu, S. Inouye, A. Su-  
tow, S. Keikoan, N. Takahashi.

TOP: T. Adachi J. Koide, H. Kajita, S. Sakurai, Mr. Bishop, E. Taka-  
hashi, A. Noda, G. Yamada, T. Enomoto, H. Nakao.



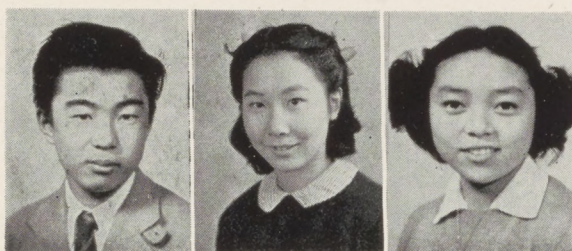
# SOPHOMORE



LEE SUYEMOTO, *President*

Fall

MUTSUMI HAYASHI  
*Vice-President*



SALLIE TSUGAWA  
*Secretary-Treasurer*

GRACE MANABE, *Vice-President*

The Sophomore class integrated into the smooth functioning of the high school, for not only were they well represented in the field of sports, but many of their classmates were a prominent part of the political and social picture of the school.

The Sophomores chose wisely when they elected Lee Suyemoto, President; Mutsumi Hayashi, High Sophomore Vice-President; Grace Manabe, Low Sophomore Vice-President; Sallie Tsugawa, Secretary-Treasurer; and Sumi Ozawa, Historian. Mutsumi Hayashi, with the invaluable assistance of his social committee, carried on admirably when his colleague, Grace Manabe, relocated during the middle of the term. Highlighting the social calendar were the "Sophomore Get-togeth-

## SOPHOMORE SOCIAL COMMITTEE

TOP: Y. Sugiyama, M. Hayashi, M. Kato, H. Mizota, B. Mizono.

MIDDLE: Miss Loomis, S. Omori, L. Suyemoto,



M. Tatsuguchi, S. Hirose, K. Sato.

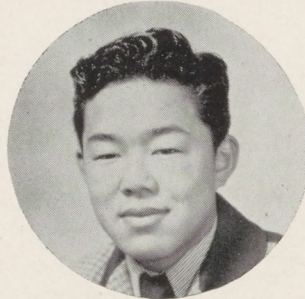
BOTTOM: H. Sawai, S. Tsugawa, A. Tamaki, F. Miho, S. Ozawa, S. Tajima, E. Marubayashi.

Forty-nine



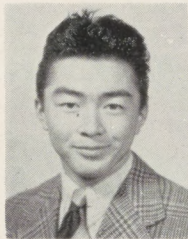
# SOPHOMORE

Spring



KEN SATO, *President*

TAK ESHIMA  
*Vice-President*



GRACE MORI, *Vice-President*



SALLIE TSUGAWA\*  
*Secretary-Treasurer*

er," which started the social activities with a bang, and the "Sophomore Ski Jump," which honored Amy Tamaki as the Snow Queen."

During the Spring, '45, term the functions of the Sophomore class were taken over by the new executive body, including Ken Sato, President; Tak Eshima, High Sophomore Vice-President; Grace Mori, Low Sophomore Vice-President; and Sallie Tsugawa, re-elected Secretary-Treasurer. The combination of the well-chosen officers and the cooperation of the whole Sophomore class have made the Sophomores a significant part of Topaz High School.

## SOPHOMORE SOCIAL COMMITTEE

BOTTOM: K. Oyama-  
da, S. Ozawa, G. Mori, B.  
Harada, S. Tsugawa, A.  
Narahara, M. Mayeda.

MIDDLE: C. Morizono,  
K. Shimizu, M. Takaku-



wa, Y. Kami, E. Doi, M.  
Maas, T. Eshima.

TOP: K. Saito, S. Nak-  
ashige, S. Takaki, K. Sa-  
to, K. Ito, T. Sano, G. Shi-  
mada.



## High Sophomore Class



BOTTOM: M. Kojimoto, K. Asano, E. Marubayashi, F. Miho, G. Matsumoto, I. Sawai, Y. Fujimori, M. Maruyama, K. Yoshizawa.

MIDDLE: Miss Sharvy, S. Haramaki, A. Kawamoto, M. Hidekawa, A. Tamaki, H. Matsuzaki, S. Yoshikawa, S. Inai.

TOP: M. Tanaka, T. Yago, T. Nakayama, A. Shigetomi, M. Kato, S. Omori, L. Suyemoto, B. Mizono, M. Tatsuguchi, M. Hayashi, S. Shinoda, S. Hirose, J. Fukada I. Kuwano, I. Tanaka, H. Mizote.





BOTTOM: N. Yui, H. Ono, M. Ogo, R. Nakamura, S. Tajima, N. Takahashi, T. Saiki, T. Tsugawa M. Tsuzuki.

MIDDLE: M. Kita, K. Fujioka, N. Yoshifuji, M. Motoyoshi, S. Kamiiji, S. Tsugawa, Y. Yamashiro, H. Yamane, S. Ozawa, E. Kayumi, F. Nakata, M. Ohara, I. Shimomura.

TOP: H. Sasaki J. Nakashima, K. Saito, S. Takahashi, S. Furuta, A. Nakabayashi, S. Takeda, B. Shinosaki, S. Takaki, T. Yuki, B. Hirose, T. Sano, T. Kawata, G. Nagano Y. Tsutsui, B. Motozaki.

## Low Sophomore Class



BOTTOM: M. Iwamoto, H. Hamasaki, R. Hamachi, H. Kaneko, S. Abe, A. Narahara, T. Aihara.

MIDDLE: C. Kubokawa, G. Yoshida, K. Yamanaka, K. Nakazato, T. Eshima, B. Nakahira, F. Matsumo, S. Matsuzaki, T. Yuto, H. Hayashi, J. Kano.

TOP: M. Mizoguchi K. Sato, J. Hayashi, M. Matsui, D. Nakahata, K. Ito, D. Utsumi, D. Iyeki, I. Kurotori, K. Nakatani, K. Yamasaki, K. Nagasawa, J. Nakamura.





BOTTOM: M. Maas, S. Mochida, K. Kotake, K. Ikenoyama, G. Yoshizuka, M. Mizobe, A. Mizota, N. Mayeda, G. Tsujisaka.

MIDDLE: I. Nakagawa, H. Nogami, I. Hoshi, L. Furusho, M. Kambara, B. Harada, Y. Sugiyama, E. Nishimoto, F. Ura, H. Watamura.

TOP: R. Takemoto, R. Otsuji, K. Fukuoka, M. Miyamoto, R. Hashimoto, M. Yagura, M. Ishihara, F. Akita, N. Ishida, J. Kawakami, R. Yoshizuka, N. Momii, M. Tsumori, T. Nakayama.

## Low Sophomore Class and High Freshman Class



BOTTOM: J. Yamada, M. Shiozawa, H. Marubayashi, M. Mayeda, T. Suzuki, R. Shiraki, H. Okamura, S. Sano, K. Oyamada.

MIDDLE: M. Hananouchi, C. Morizono, N. Shibata, B. Harano, S. Ichiooka, M. Kamiiji, S. Tekawa, M. Takakuwa, E. Doi, Y. Kami, G. Mori, K. Ozaki, E. Sasaki, K. Kitagaki.

TOP: E. Takeuchi, S. Sakurai, B. Shin, R. Itashiki, M. Shinoda, S. Shimamoto, K. Shimizu, G. Okada, G. Shimada, B. Kikuchi, K. Kobayashi, O. Maruyama, H. Kuwamoto.



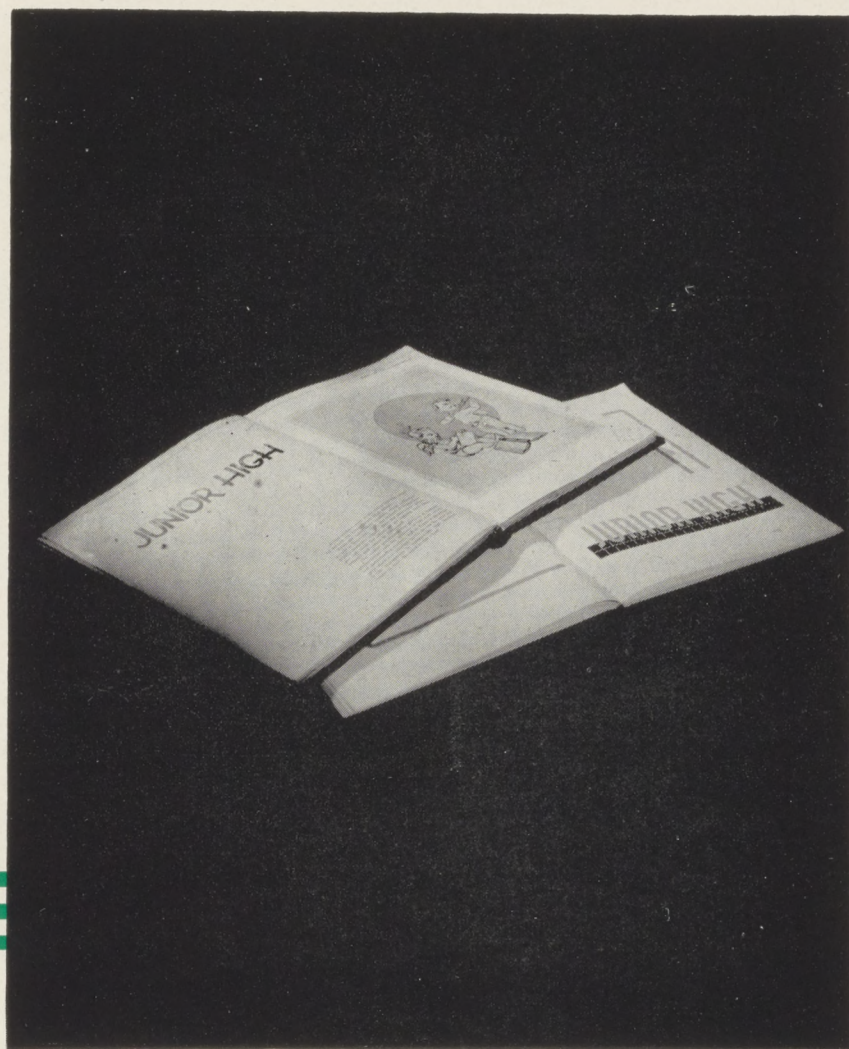
Plans for amalgamation having been definitely abandoned, the Junior High surged ahead with its own well-thought-out program. Participating thus whole-heartedly, leaders for high school years and tomorrow have been created.



# JUNIOR HIGH

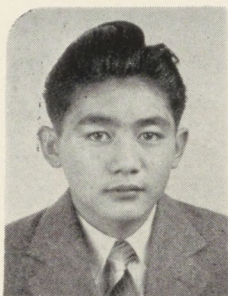
*Fifty-four*







# EXECUTIVE



JOE KITA

## Fall



June  
Yamada

May Iha

Lou  
Minamoto

Sam  
Hayamizu

Aki Sato

Hatsue  
Takaha

The Executive Council members during their incumbency as leaders of the Junior High, were fully deserving of congratulations for their meritorious work. The Executive Board of fall, '44, consisted of Joe Kita, President; June Yamada, Vice-President; May Iha, Secretary-Treasurer; Lou Minamoto, Historian; Aki Sato, G. A. President; and Hattie Takaha, editor of the "Baby Ram." The school officers of spring, '45, were Hayami Fujii, President; Mickie Takaha, Vice-President; Lucy Takagi, Secretary-Treasurer; Lou Minamoto, Historian; Mary Yasutake, G. A. President; George Araki,



## SOCIAL COMMITTEE

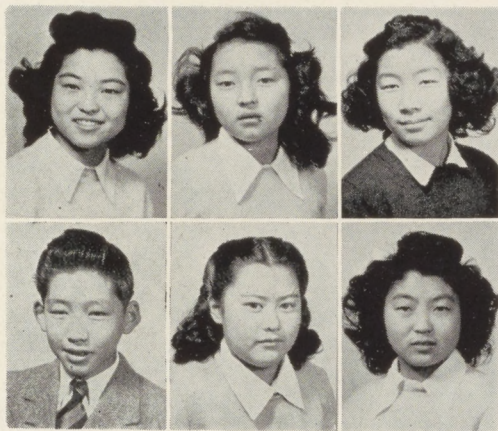
BOTTOM: M. Shimomura, A. Yamanashi, M. Takaha, J. Yamada, H. Takaha, K. Nakashige.

TOP: S. Hayamizu, J. Kita, G. Shimada, R. Nakamura.



# COMMITTEE

## Spring



Mitsue Takaha Lucille Takagi Lou Minamoto  
George Araki Betty Minemoto Hatsue Takaha



Hayami Fujii

B. A. President; and Hattie Takaha, Editor-in-Chief.

The Junior High Social Committee, headed by June Yamada, fall, '44, and Mickie Takaha, spring, '45, was highly commended for keeping the Junior High active in social affairs.

With the closing of this school year, probably the last of any school in Topaz, the Junior High can look back with pride on the splendid spirit developed through the untiring endeavors of the Executive Council.

## SOCIAL COMMITTEE

BOTTOM: Y. Ishida, J. J. Yamada, C. Tamura, H. Takaha, A. Sato, A. Yamashiro, M. Takaha.

TOP: M. Mori, J. Kita, S. Hayamizu, H. Kato, M. Inouye, R. Moritomo.

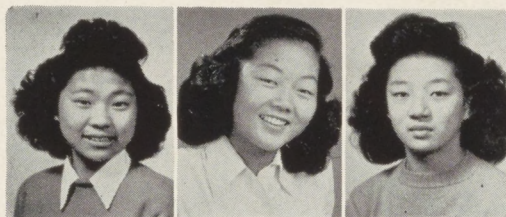




# FRESHMAN



Mike Hananouchi



Mary Mayeda

Grace Mori

Martha Mori

The graduating classes of fall, '44, and spring, '45 have shown great development as leaders of the Topaz Junior High School. The executive council of the ninth grade, the organization responsible for instigating all of the activities to make the final year of the Freshmen enjoyable, consisted of Mike Hananouchi, President; Mary Mayeda, High Ninth Vice-President; Martha Mori, Low Ninth Vice-President; and Grace Mori, Secretary-Treasurer for the fall, '44, term; and of Sam Hayamizu, President; Aki Sato, High Ninth Vice-President; Frank Wada, Low Ninth Vice-President and Kay Uye-hara, Secretary-Treasurer, for the term of spring, '45.

The vice-presidents, who led the social committees of the class, are to be commended for their achievements during their terms of office. Highlighting the semes-



# CLASS



Sam Hayamizu



Kay Uyehara

Aki Sato

Frank Wada

ter's accomplishments were the Freshman Proms and the program of the final week of school. Also to be lauded for its fine work is the Graduation Committee, which supported the Executive Council in formulating and carrying out the final week of Junior High schooling that culminated with the commencement.

All of these memorable activities are left behind us as we progress another step toward our ideals in our education.





BOTTOM: M. Iha, M. Yasutake, L. Takagi, N. Uyeda, A. Kawata, Y. Ishida, M. Otsuba, N. Chiwaki, K. Mizuhara, H. Sagimori, E. Ishida.

MIDDLE: Mrs. Hudson, H. Yamanashi, J. Yamada, A. Sato, K. Uye-hara, Y. Harano, E. Kaji, K. Urabe, A. Yamanashi, H. Takaha.

TOP: N. Higuchi, K. Kotake, C. Tamura, M. Mori, D. Ikeda, F. Hayashida, F. Fujii, S. Morita, B. Kato.

## Low Freshman Class



BOTTOM: G. Fukuhara, J. Murakami, R. Moritomo, K. Tsubokawa, S. Tsuboi.

TOP: B. Yamanaka, K. Yoshizuka, A. Mizuhara, F. Nagata, H. Nose, M. Sugiyama, K. Hitomi, E. Ito, N. Kanzaki.





BOTTOM: M. Yamada, M. Nagasawa, F. Matsunaga, L. Kawakami, H. Nagata, A. Tamura, H. Muneno, T. Nakamura, N. Shimada, S. Nakatani.

MIDDLE: M. Kawaguchi, K. Hirabayashi, N. Baba, Y. Kumagai, M. Dowke, G. Sunada, K. Takahashi, A. Furuta, I. Yoshikawa, A. Kinoshita.

TOP: S. Keikoan, G. Nakashige, J. Sasaki, T. Kobayashi, T. Tsuchiya, K. Kawaguchi, H. Kato, S. Hayamizu, J. Kita, M. Inouye, W. Iwaki, S. Hanamoto

## Low Freshman Class and High Eighth Grade



BOTTOM: K. Mizuhara, M. Oishi, T. Nakayama, A. Matsui, K. Dozen, M. Matsuzaki, L. Minamoto, B. Minemoto, K. Okada, D. Yanagi.

MIDDLE: Y. Manabe, R. Kuruma, K. Tsutsui.

TOP: E. Bell, G. Morita, G. Araki, H. Okayama, F. Wada, E. Matsui, J. Nihei, S. Matsuno, Y. Kojimoto, S. Haramaki, E. Nomura, H. Fujii, T. Hideshima, Y. Serata, D. Kawamorita, T. Takahashi, H. Kono.





BOTTOM: K. Inouye, L. Hori, F. Sakauye, S. Sasaki, R. Fukuhara, T. Takakuwa, M. Takaha, D. Nakata, G. Otsuiji, G. Yamada.

MIDDLE: H. Yoshida, H. Tsugawa, W. Okamoto, K. Tanaka, N. Iwasa, W. Mori.

TOP: K. Shimizu, H. Miyachi, A. Sugiyama, M. Ono, T. Nogami, C. Yoshiyama, S. Miyamura, L. Nishimura G. Hayashi, K. Abey, Y. Isoye.

## Low Eighth Grade

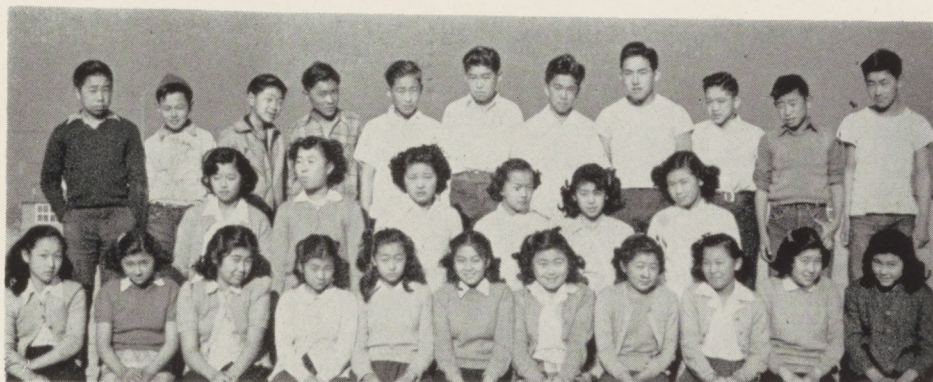


BOTTOM: J. Ogo, L. Uyeda, M. Orimoto, M. Sano, H. Asai, K. Abe, R. Ishikawa, S. Yamashita, M. Mori, D. Mitsuhara, H. Miyamura.

MIDDLE: F. Nishioka, G. Nishikawa, G. Tamaki, R. Nakamoto, E. Nakata, Y. Suzuki, T. Hatashita, F. Kaneko, Y. Otani.

TOP: I. Yoshiura, B. Tsuchida, K. Ozawa, E. Ichioka, I. Takagi.





BOTTOM: T. Katsumoto, F. Nakao, K. Mochida, K. Yamada, A. Takahashi, K. Urano, M. Suyeyasu, H. Nozaka, J. Motozaki, I. Ishida, S. Inouye.

MIDDLE: F. Orimoto, C Mayeda, M. Miyagawa, K. Sakurai, M. Yoshikawa, A. Oyamada.

TOP: A. Okuno, G. Sukihara, J. Hashimoto, H. Akita, J. Sekigahama, S. Takeda, J. Tsurui, J. Moriguchi, M. Nakayama, S. Hibi, T. Nishimura.

## Low Eighth Grade and High Seventh Grade



BOTTOM: E. Uyeda, M. Shimamura, J. Morita, K. Sakai, F. Takayama, T. Kobayashi, J. Shinosaki, F. Yoshizuka, S. Hosokawa, E. Tsuji, J. Narahara.

TOP: J. Mizota, E. Koayashi, G. Inada, F. Asano, T. Sakoda, Y. Mizota, S. Horita, S. Sasamoto, Y. Maruyama, A. Matsuoka, S. Manabe, J. Muramatsu, K. Kuritsubo.





BOTTOM: S Takaki, H. Takahashi, B. Suzuki, S. Tanaka, N. Ishikawa,  
V. Kawasaki H. Iwamoto, C. Moriwaki, K. Nakashige, F. Ishida.

MIDDLE: W. Yamasaki, R. Sekigahama, H. Oku, J. Morimoto, D.  
Harada, K. Ikuma, J. Nishiyama, R. Oshima.

TOP: S. Nakamura, K. Matsunaga, T. Ohara, M. Sato, M. Takaki, N.  
Nagasawa, K. Kusumi, W. Kikuchi, T. Nakamoto, T. Ito, G. Saku-  
rai, S. Serata, J. Sato W. Nakahara.

## Low Seventh Grade



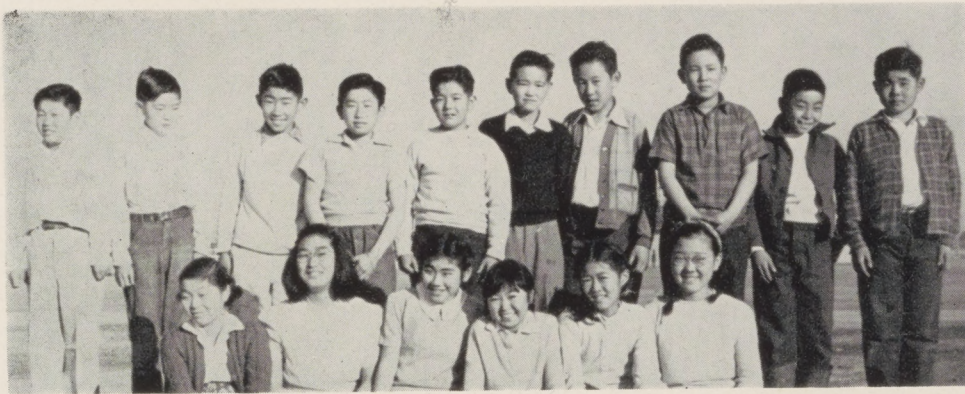
BOTTOM: June Saito, D. Yoshida, T. Sasaki, T. Fukuhara, M. Uchida,  
K. Hironaka, S. Uto, V. Yoshizuka, K. Tanaka, M. Kuwahara, K.  
Hitomi.

MIDDLE: T. Nihei, R. Tanaka, K. Yonekura, R. Tanabe, K. Fukawa,  
T. Tomimura, J. Iida, M. Hayashi, F. Uyeda, J. Sato.

TOP: G. Mayeda, T. Ozawa, T. Okamoto, B. Shimada, M. Matsuzaki,  
T. Sekigahama, H. Sano, C. Muto, Y. Kotake, T. Hayamizu, K.  
Nakashige



## Spring Low Seventh



BOTTOM: T. Furuya, M. Saito, N. Tamura, H. Haramaki, A. Akiyama,  
S. Yamasaki.

TOP: F Shinoda, A. Nozaka, S. Inai, Y. Maruyama, P. Asano, N. Okamoto,  
S. Motoyoshi, L. Matsumoto, T. Mochida, B. Sugiyama.





MARY

KEIJI

BEN

KIMI

MAY

BEN

AMY

CHET

GRACE

## Those Whom We Honor

### FALL TERM

*Most All-Round:* MAY TAKAKUWA, BEN KIKUCHI

*Most Worthy:* MARY MAYEDA, KEIJI SHIMIZU

*Most Popular:* GRACE MORI, CHESTER MORIZONO

*Brainiest:* KIMIKO KITAGAKI, BEN KIKUCHI

*Cutest:* AMY DOI





NORIKO

KAY

JOE

JUNE

ROSIE

SAM

AKI

HID

HATTIE

## Those Whom We Honor

### SPRING TERM

*Most Worthy* JUNE YAMADA, JOE KITA

*Most All-Round:* AKI SATO, SAM HAYAMIZU

*Most Popular:* HATTIE TAKAHA, HIDEO KATO

*Brainiest:* NORIKO CHIWAKI, KAY ARAKI

*Cutest:* ROSIE MORITOMO



The aim of education today is not so much the securing of a wealth of factual knowledge as it is the social development of the individual. The extra-curricular activities of Topaz High School have helped develop well-rounded personalities. Since the inception of our school, we have progressively evolved activities which offer the student rich opportunities.

Activities create unity among the students; a sense of comradeship, accomplishment and co-operation develops. These diverse clubs have been extremely beneficial in developing among the students . . .

#### THE LEADERS OF TOMORROW



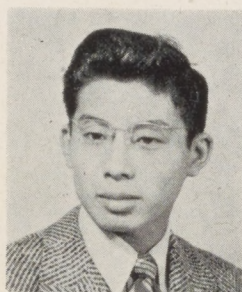
# ACTIVITIES

*Sixty-eight*









RYOZO KUMEKAWA  
*Editor*

Cherished school day memories would be incomplete without the three brief but fun-filled years of high school. Individual schools are possessed with varying traditions, but Topaz High has provided her students with a unique past, one that students will enjoy reminiscing upon.

The '45 Ramblings, being the third and final yearbook publication, serves its ultimate purpose of offering to the students the only tangible reminder of past Topaz High activities and accomplishments by recording them through pictures and the written word.

The '45 Ramblings staff has endeavored to present a journal maintaining the standard established by previously published editions.

#### THE STAFF

<i>Editor</i> .....	RYOZO KUMEKAWA
<i>Technical Editor</i> .....	CHESTER KAKU
<i>Staff</i> .....	BEN NAKAHIRA, MICHIO SUZUKI
<i>Literary Editors</i> —	SADAME HARA, BETTY HAYASHI, DOROTHY HARADA
<i>Former Literary Editor</i> .....	TERUKO KANEKO
<i>Former Staff</i> —	MARY TAMAKI, BETTY HAYASHI, SADAME HARA
<i>Sports Editor</i> .....	RICHARD YAMASHIRO
<i>Former Editor</i> .....	HARUMI KOJIMOTO
<i>Photo Librarian</i> .....	KUMI ISHIDA
<i>Staff</i> .....	AGNES OGAWA
<i>Business Manager</i> .....	PAUL BELL
<i>Staff</i> —	SHIZUO NAMBA, DAISY UYEDA, HARRY KAWABATA, HANA SONODA.
<i>Former Business Manager</i> .....	YUTAKA YOSHIDA
<i>Former Staff</i> .....	SEIKO AKAHOSHI



# RAMBLINGS



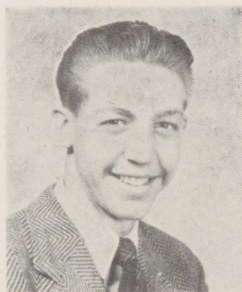
*Left to right: A. Yamada, K. Oyamada, S. Asano, S. Hara, Mrs. Palecek, literary advisor; B. Hayashi, R. Uyeda, R. Yamashiro, K. Nakagiri.*

*Left to right: H. Kawabata, Mr. Maggiora, business advisor; P. Bell, S. Namba, M. Suzuki, D. Uyeda, C. Kaku, R. Kumekawa, H. Sonoda, B. Nakahira, K. Ishida.*





# RAMBLER

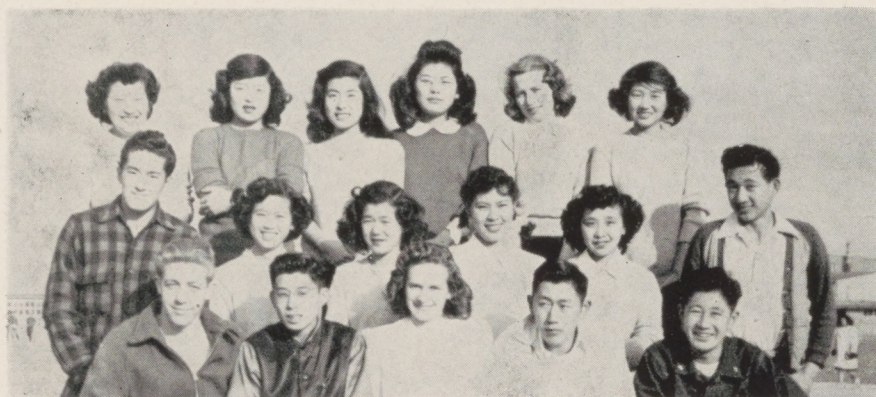


PAUL BELL

*Editor*

The Topaz RAM-BLER, medium of student opinion, promoter of school activities, champion of measures furthering our goals, has striven to carry on established precedents and master the problems attendant upon publication of each bi-monthly issue. In the first semester, because of the teacher shortage's bringing about schedules that prevented the holding of a journalism class, the RAM-BLER was staffed entirely by volunteers, whose enthusiasm and industry overcame in large measure their lack of formal instruction. In January, however, the situation was bettered and twenty-two embryo journalists embarked in earnest on their writing careers.

Judgment, discrimination, tact: these have been fostered in our members. Personals, character sketches, and, above all, news, have been recorded for future reminiscings. Humor, too, has not been neglected, nor has the giving of the richly deserved credit due some of our chief activities.



BOTTOM: P. Bell, R. Kumekawa, Mrs. Palecek, R. Humachi, R. Yamashiro.

MIDDLE: S. Namba, M. Yoshimori, E. Marubayashi, K. Ishida, A. Yamada, E. Kikuchi.

TOP: D Uyeda, M. Hidekawa, A. Tamaki, T. Tamura, J. Sanford, F. Saiki.



# BABY RAMS



HATTIE TAKAHA  
*Editor*

To help arouse junior high interest in student activities, the "Baby Ram" was born on Dec. 15, 1944. The staff of twenty-five students has put out three mimeographed and one printed issue of the "Baby Ram."

Throughout the year the staff has learned journalistic procedures and techniques through actual experiences. Some of the most popular columns of the four page issue have been "Kitty's Korner," fashions, and personality sketches.

## FIRST STAFF

<i>Editor-in-chief</i> .....	HATTIE TAKAHA
<i>Associate Editor</i> .....	JUNE YAMADA
<i>News Editor</i> .....	MARY MAYEDA
<i>Feature Editor</i> .....	AKI SATO
<i>Technical Editor</i> .....	KEIJI SHIMIZU
<i>Boys' Sports Editor</i> .....	GEORGE SHIMADA
<i>Girls' Sports Editor</i> .....	MAY IHA

## NEW STAFF

<i>Editor-in-chief</i> .....	HATTIE TAKAHA
<i>Associate Editor</i> .....	JUNE YAMADA
<i>News Editor</i> .....	CHERRY TAMURA
<i>Feature Editor</i> .....	AKI SATO
<i>Technical Editor</i> .....	JOE KITA
<i>Boys' Sports Editor</i> .....	SAM HAYAMIZU
<i>Girls' Sport Editor</i> .....	MAY IHA



BOTTOM: W. Shinoda, R. Ishikawa, D. Nakata, Y. Ishida, T. Takakuwa, D. Yoshida, K. Masunaga

MIDDLE: M Takaha, R. Moritomo, C. Tamura, M. Mori, A. Sato, Miss Crosbie, H. Takaha, L. Takagi, J. Yamada

TOP: B. Nakamoto, S. Hayamizu, M. Inouye, J. Kita, G. Nishikawa, W. Yamasaki.



## HI-Y



BOTTOM: H. Kojimoto, P. Bell, I. Ozawa, J. Doami, T. Sano, B. Utsumi, Y. Yoshida.

MIDDLE: Mr. Sekerak, B. Nakahira, R. Yamashiro, H. Kawabata, T. Inouye, R. Kumekawa, C. Kaku, Mr. Tatsuno.

TOP: Mr. Hotta, Y. Furuya, T. Oshima, J. Suyemoto, J. Hayashida, S. Namba.

## THESPIANS



BOTTOM: N. Takahashi, D. Uyeda, S. Akahoshi, E. Marubayashi, G. Anderson.

MIDDLE: J. Sanford, Y. Keikoan, M. Hidekawa, Miss Loomis.

TOP: J. Hada, Y. Furuya, Y. Yoshida, P. Bell, H. Nakai, S. Namba, R. Kumekawa.



## SENIOR GIRL RESERVES

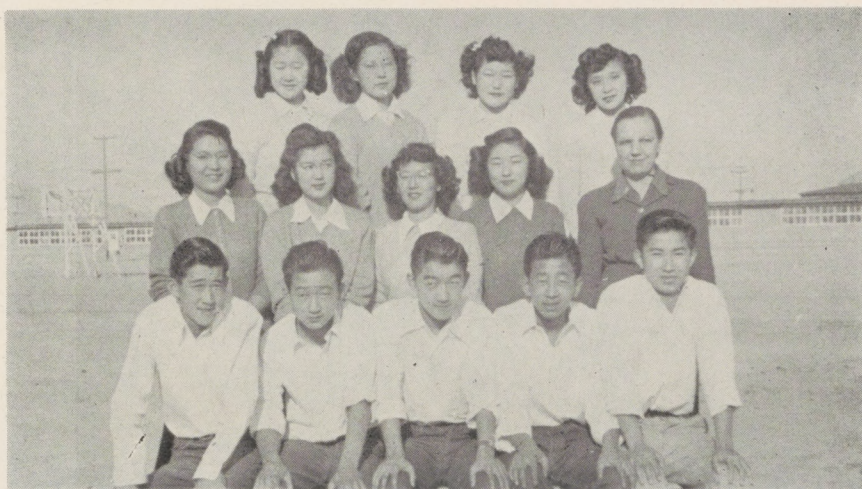


BOTTOM: S. Hara, E. Marabayashi, D. Uyeda, S. Akahoshi, K. Yoshimura, S. Mochida, B. Harada, H. Yamane, N. Yoshifuji

MIDDLE: K. Hideshima, N. Takahashi, W. Nagasawa, M. Maas, G. Anderson, H. Ito, M. Tsugawa, L. Furusho, T. Tsugawa, A. Hironaka, D. Harada.

TOP: R. Uyeda, J. Egashira, M. Oshima, P. Shiozawa, Miss Matzkin, F. Nagano, Y. Keikoan, M. Hidekawa, J. Sanford, A. Keikoan, K. Ishida, L. Sato.

## HONOR SOCIETY



BOTTOM: S. Ishihara, L. Suyemoto, Y. Yoshida, J. Suyemoto, H. Kojimoto.

MIDDLE: R. Asoo, A. Maruyama, S. Akahoshi, T. Doi, Mrs. Dingley.

TOP: A. Takita, F. Nagano, J. Egashira, A. Yamada.



## JUNIOR GIRL RESERVES



BOTTOM: L. Uyeda, H. Asai, M. Kawaguchi, M. Iha, T. Takakuwa, Y. Ishida, K. Tsubokura, J. Murakami, G. Mori.

MIDDLE: S. Morioka, N. Uyeda, N. Shibata, B. Harano, M. Kamiji, P. Ichioka, F. Hayashida, A. Kinoshita, Y. Kami, E. Doi.

TOP: M. Yasutake, A. Kawata, K. Takahashi, A. Furuta, G. Sunada, M. Takakuwa, Miss Matzkin, M. Mayeda, S. Tekawa, T. Suzuki, K. Oyamada, J. Yamada.

## PI BETA KAPPA



BOTTOM: J. Sanford, F. Saiki, Mr. Anderson, J. Yoshizuka, R. Nakahira.

TOP: H. Nakamura, H. Kawabata, E. Kikuchi, G. Okawachi, P. Ono, F. Ikenoyama, W. Takahashi, H. Takahashi, R. Hamachi.



## FOREIGN LANGUAGE CLUB



BOTTOM: J. Sanford, F. Saiki, R. Uyeda, B. Harada, J. Yamada, M. Iwaki, J. Murakami, M. Furuya, T. Aihara, A. Narahara, Miss Loomis, G. Anderson.

MIDDLE: Y. Iwasa, S. Asano, L. Ochiai, A. Mori, H. Ito, J. Nishimoto, L. Fujiwara, A. Takita.

TOP: H. Hayashi, D. Nakahata, K. Sato, D. Utsumi, T. Sano, K. Nakazato, B. Nakahira, Y. Sugiyama, F. Ura.

## CHORAL CLUB



BOTTOM: T. Ito, J. Nagata, E. Osugi, A. Yamada, K. Nakagiri, P. Yoshino, M. Matsumoto, M. Akiyama.

MIDDLE: K. Hideshima, J. Egashira, Y. Tsumura, Y. Yoshifuji, G. Anderson, R. Ikeda, M. Iwaki, J. Sanford.

TOP: J. Takahira, A. Takita, Mrs. Crane, Y. Ito, F. Saiki.



## BOOSTERS



BOTTOM: R. Nakamura, E. Marubayashi, D. Uyeda, S. Akahoshi, N. Takahashi, Y. Keikoan, M. Hidekawa.

TOP: E. Nagasawa, A. Yamada, K. Yoshiura, S. Tsugawa, M. Shinoda, S. Keikoan.

## JUNIOR HIGH HONOR GUARD



BOTTOM: H. Kato, M. Inouye.

TOP: J. Kita, K. Araki, S. Hayamizu.



# SNAPS





Sports, as a vital factor in the foundation of a well-balanced personality, helps us to realize the ultimate ideal of a sound mind in a sound body. Primarily we have the opportunity to receive excellent lessons in teamwork, to achieve the fullest meaning of "sportsmanship."

Everyone in the school is a sports participant; we have known that whether we have actually appeared on the field or not, our support of the team has made us one of its members. Through our sports program, then, we have advanced materially toward becoming . . .

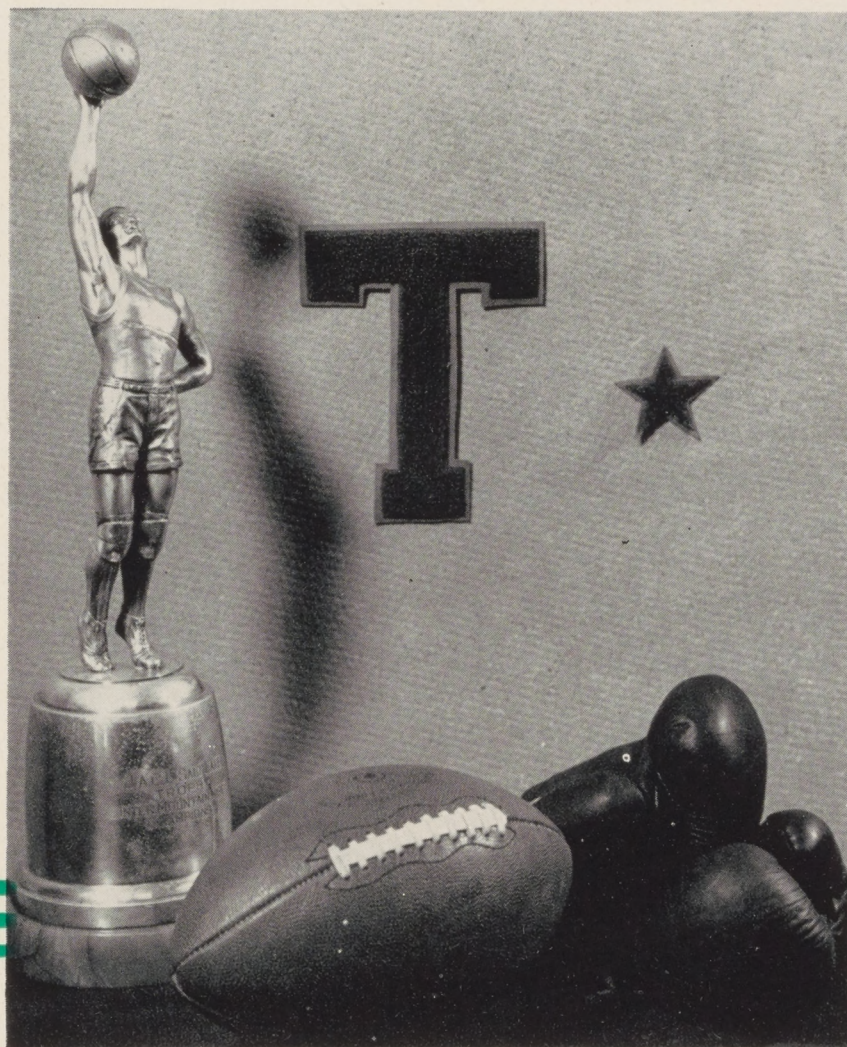
LEADERS OF TOMORROW



# SPORTS

*Eighty*







# PIGSKIN



The gridiron season at Topaz High School encountered numerous uncertainties in its schedule because of unavoidable transportation difficulties, and only through the constant efforts of Vice Principal Smith to arrange games and the brilliant coaching of Yosh Takakuwa, Sammy Yamamoto and Mike Yoshimine, was the football squad able to complete its season.

Without a single returning letterman from the first team, the Rams began a grueling series of practice with the tattered uniforms of a season past. But the competitive spirit flaming in the hearts of the hard-fighting Rams carried them through to one victory and one tie in four clashes with outside schools of superior and heavier opposition.

Opening the season against Delta High, the Green and Gold held the huge Rabbits to a scoreless tie. Topaz High tasted its first victory when it took on Carbon Junior College and emerged victorious, 13 to 0. The Rams showed a potential passing attack with superb line blocking in this game.





# PARADE



But Carbon took revenge with a 12 to 0 win over the Rams at Price in a return game. Our boys finished the regular season at Fillmore against the high scoring Millard High Eagles, Region four and six champions.

In a pair of post season tussles, the Rams lost out to a pick-up Salt Lake team and the local Commissary, by scores of 13 to 6 and 12 to 0, respectively. The Rams were pitted against much heavier and more experienced gridmen in these games.

Some of the outstanding playere were George Okawahi, Sus Iwasa and Co-capt. Wacky Sumimoto in the backfield and Co-capt. Junji Doami, Joe Kimura, Tom Okai and Chet Morizono on the line.

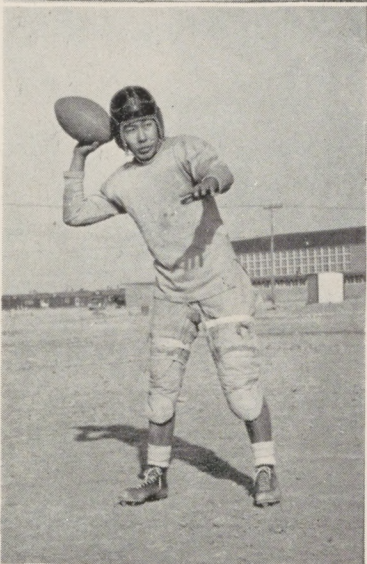
A lot of credit goes to the fine work done by Manager Clem Nakai and his two assistants, Tubby Yoshida and Chiharu Kubokawa, in taking care of the football equipment and caring for the needs of the players.

Topaz.....	0	Delta .....	0
Topaz.....	13	Carbon J. C.....	0
Topaz.....	0	Carbon J. C.....	12
Topaz.....	0	Fillmore .....	6

## POST SEASON GAMES

Topaz.....	6	Salt Lake.....	13
Topaz.....	0	Commissary .....	12





#### HADA

Joker Hada — TACKLE.  
Class: Senior. Home: San Francisco, Calif. Age: 17.  
Height: 5 ft., 9 in. Weight: 145.

#### KIMURA

Joe Kimura — TACKLE.  
Class: Senior. Home: San Francisco, Calif. Age: 17.  
Height: 5 ft. 4 in. Weight: 142.

#### OGO

Kiyoshi Ogo — HALF.  
Class: Senior. Home: San Leandro, Calif. Age: 18.  
Height 5 ft., 1 in. Weight: 110.

#### OZAWA

Ich Ozawa — HALF. Class: Senior. Home: Berkeley, Calif. Age: 17. Height: 5 ft., 6 in. Weight: 135.

#### KAWAMURA

Roy Kawamura — TACKLE. Class: Senior. Home: Sacramento, Calif. Age: 17. Height: 5 ft., 4 in. Weight: 142.

#### KATAYANAGI

Dick Katayanagi — TACKLE. Class: Junior. Home: Richmond, Calif. Age: 16. Height: 5 ft. 9 in. Weight: 170.

#### INOUE

Tak Inoue — QUARTER.  
Class: Senior. Home: Oakland, Calif. Age: 17. Height: 5 ft. 5 in. Weight: 138.

#### SONODA

Gus Sonoda — HALF.  
Class: Junior. Home: Richmond, Cal. Age: 16. Height: 5 ft. 6 in. Weight: 135.



#### IWASI

Sus Iwasa—HALF. Class: Junior. Home: Belmont, Cal. Age: 18. Height: 5 ft. 1 in. Weight: 140.

#### ESHIMA

Tak Eshima—QUARTER. Class: Sophomore. Home: Berkeley, Calif. Age: 15. Height: 5 ft. 6 in. Weight: 136.

#### HAYASHIDA

Juro Hayashida—FULL. Class: Senior. Home: Berkeley, Calif. Age: 17. Height: 5 ft. 4 in. Weight: 135.

#### OKAWACHI

George Okawachi—FULL. Class: Senior. Home: Martinez, Calif. Age: 17. Height: 5 ft. 5 in. Weight: 140.

#### SANO

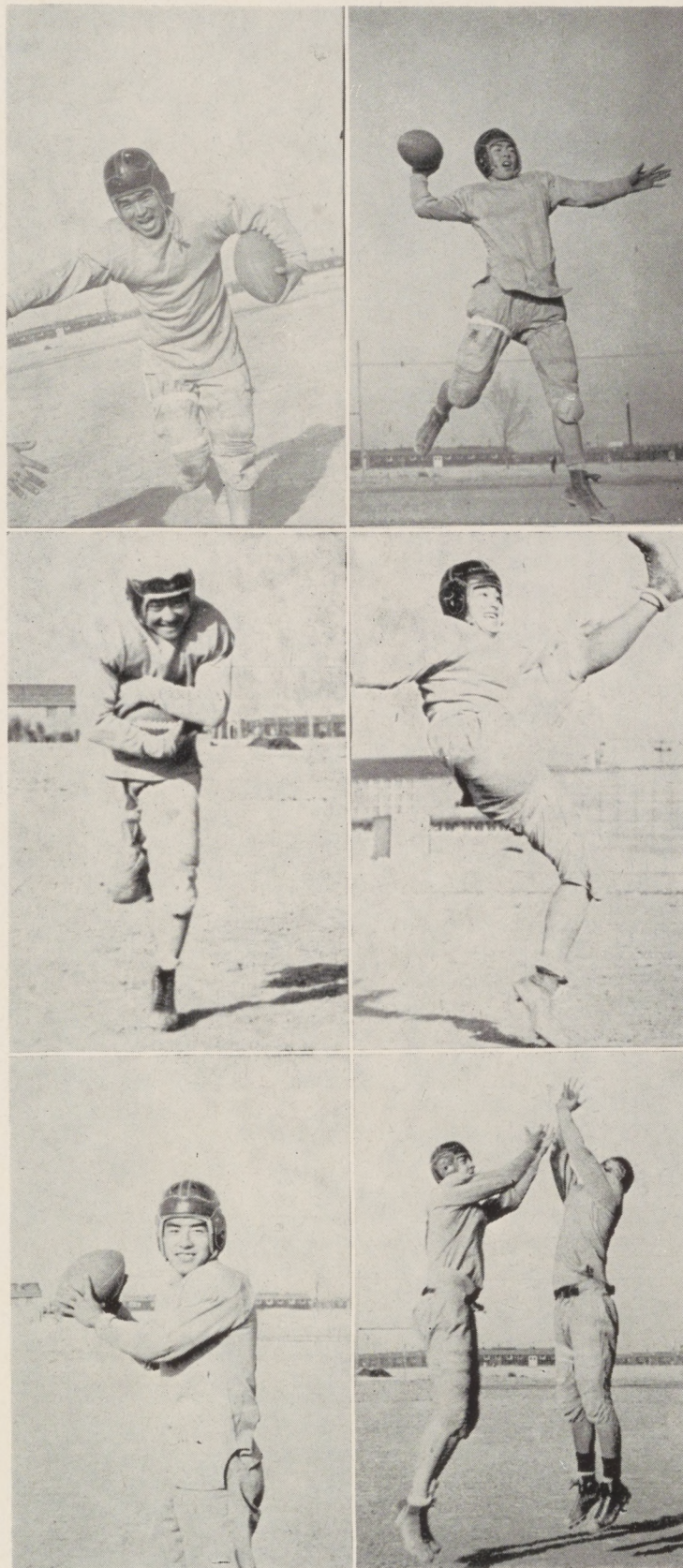
Tats Sano—QUARTER. Class: Junior. Home: Berkeley, Calif. Age: 16. Height: 5 ft. 7 in. Weight: 135.

#### BELL

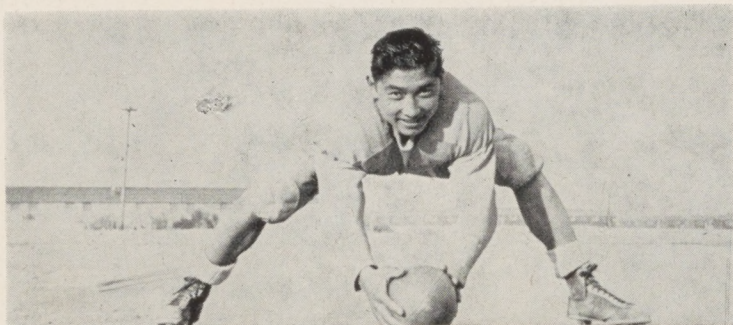
Paul Bell—END. Class: Senior. Home: Berkeley, Calif. Age: 17. Height: 6 ft. 3 in. Weight: 170.

#### YAGO

Tak Yago—END. Class: Sophomore. Home: Oakland, Calif. Age: 15. Height: 5 ft. 11 in. Weight: 150.







#### DOAMI

Junji Doami, Co-capt. —  
CENTER. Class: Senior.  
Home: San Francisco, Calif.  
Age: 17. Height: 5 ft. 9 in.  
Weight: 150.

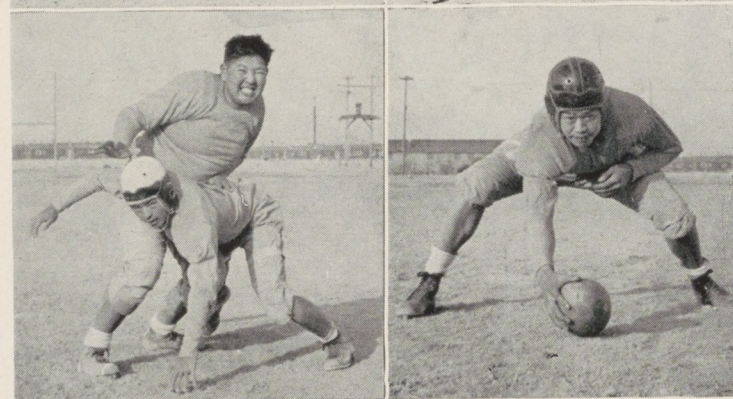


#### MORIZONO

Chet Morizono—GUARD.  
Class: Freshman. Home:  
Oakland, Calif. Age: 14.  
Height: 5 ft. 5 in. Weight:  
145.

#### HANANOUCHI

Mike Hananouchi—  
GUARD. Class: Freshman.  
Home: Pescadero, Calif.  
Age: 15. Height: 5 ft. 4 in.  
Weight: 135.



#### SUZUKI

Micky Suzuki—TACK-  
LE. Class: Junior. Home:  
Oakland, Calif. Age: 16.  
Height: 5 ft. 9 in. Weight:  
230.

#### NAKANO

Kei Nakano—TACKLE.  
Class: Junior. Home: Red-  
wood City, Calif. Age: 16.  
Height: 5 ft. 6 in. Weight:  
137.

#### OKAWACHI

Tsuneo Okawachi—CEN-  
TER. Class: Junior. Home:  
Martinez, Calif. Age: 16.  
Height: 5 ft. 8 in. Weight:  
160.



#### KATO

Mac Kato—GUARD. Class:  
Sophomore. Home: Hay-  
ward, Calif. Age: 16.  
Height 5 ft. 3 in. Weight:  
128.

#### YAMAZAKI

Chuck Yamazaki—GUARD.  
Class: Junior. Home: San  
Francisco, Calif. Age: 16.  
Height: 5 ft. 8 in. Weight:  
170.



#### HIROSE

Sei Hirose—END. Class:  
Sophomore. Home: Berke-  
ley, Calif. Age: 14. Height:  
5 ft. 6 in. Weight: 140.

#### OMORI

Shig Omori—END. Class:  
Sophomore. Home: San  
Francisco, Calif. Age: 16  
Height: 5 ft. 4 in. Weight:  
130.

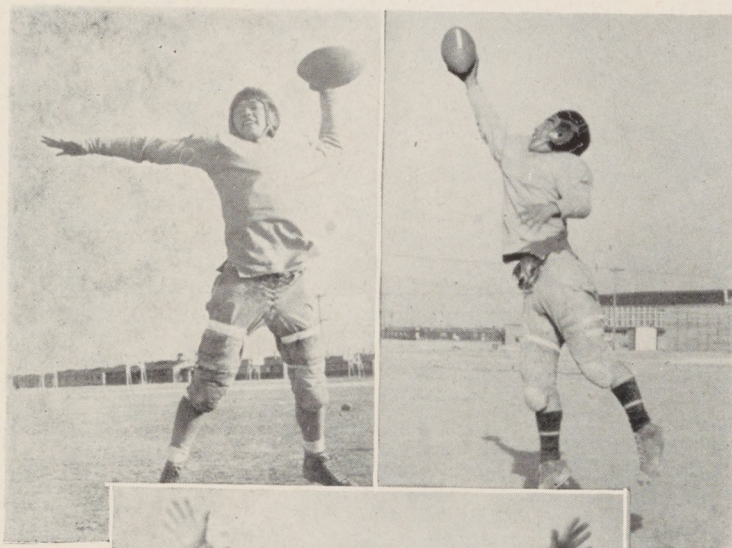


### UTSUMI

Bob Utsumi—QUARTER.  
Class: Junior. Home: Oakland, Calif. Age: 16. Height: 5 ft. 6 in. Weight: 135.

### OKAI

Tom Okai—END. Class: Junior. Home: Sacramento, Calif. Age: 16. Height: 5 ft. 6 in. Weight: 137.



### SUMIMOTO

Masaru Sumimoto—HALF. Co.-Capt. Class: Senior. Home: Oakland, Calif. Age: 17. Height: 5 ft. 7 in. Weight: 145.

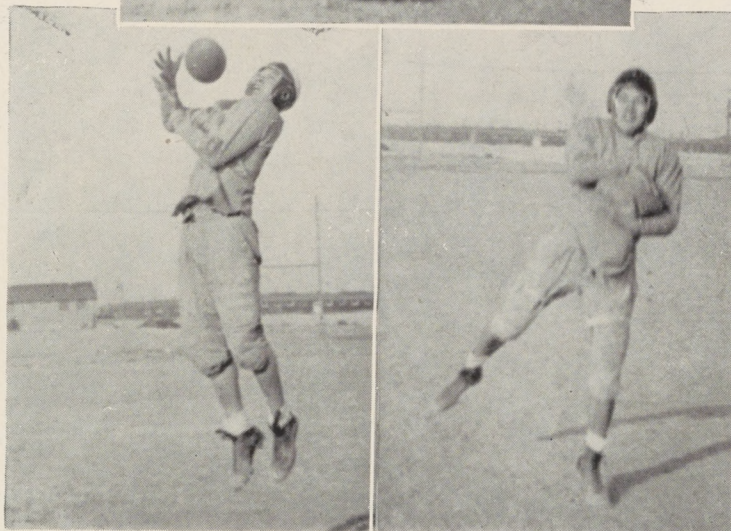


### TANAKA

Mikio Tanaka—END. Class: Sophomore. Home: Oakland, Calif. Age: 16. Height: 5 ft. 5 in. Weight: 140.

### OSHIMA

Togo Oshima — END. Class: Junior. Home: Oakland, Calif. Age: 16. Height: 5 ft., 6 in. Weight: 140.

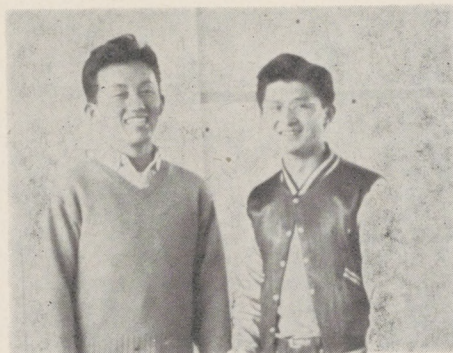




# BOYS' BASKETBALL

Looking towards a cloudy horizon because of traveling difficulties, the Rams nevertheless fought through their cage season in grand style, guided by head coach Larry Fukuhara and ably assisted by Eichi Adachi and Tom Tomioka, former cage star for the Rams.

Spearheading the Rams' attack with amazing accuracy were Jiro Nakamura, Roy Iwata, and Hid Kashima, with Junji Doami, Akio Nakata, and Tatsuo Sano mastering the defensive game. Strengthened by good reserves, the Rams marched through a successful cage season by being runners-up in the annual tournament, sponsored by the Japanese Americans Citizens League, losing a heart-breaker to the Harlem A. C. in the finals 27 to 29.



COACHES

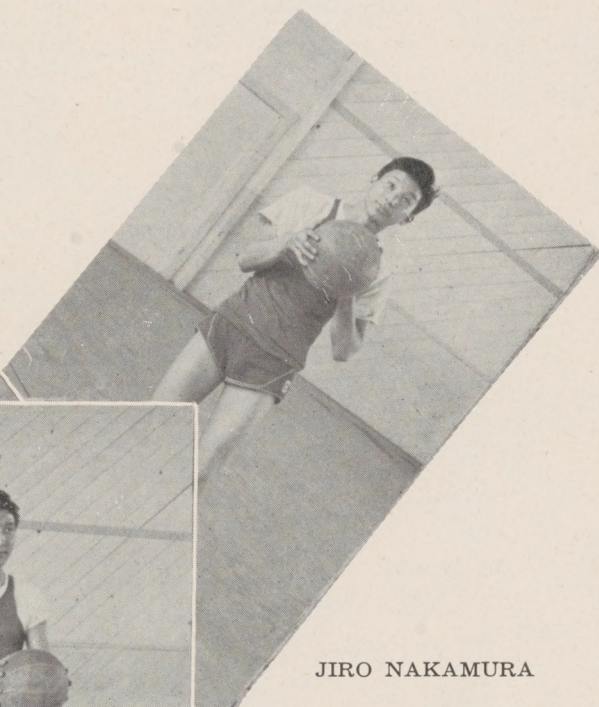
LARRY  
FUKUHARA

EICHI  
ADACHI

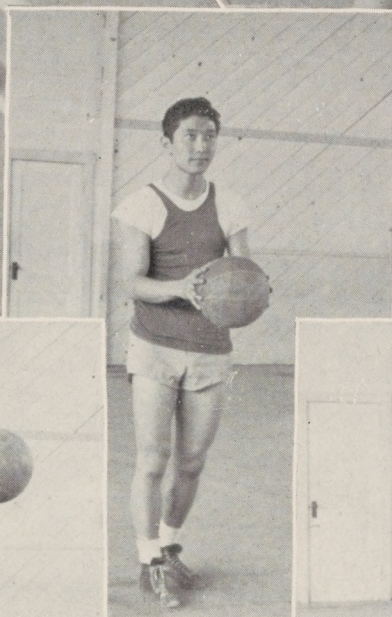




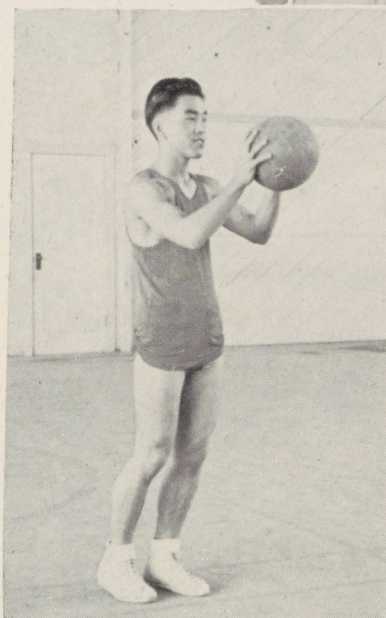
HID KASHIMA



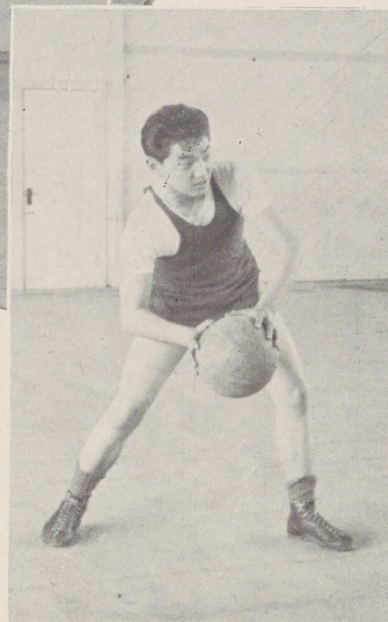
JIRO NAKAMURA



JUNJI DOAMI



TATSUO SANO



AKIO NAKATA



Starting their cage season with a bang, the Rams conquered the Hinckley Mustangs with a score of 34 to 18. Nakamura copped scoring honors with 9 points.

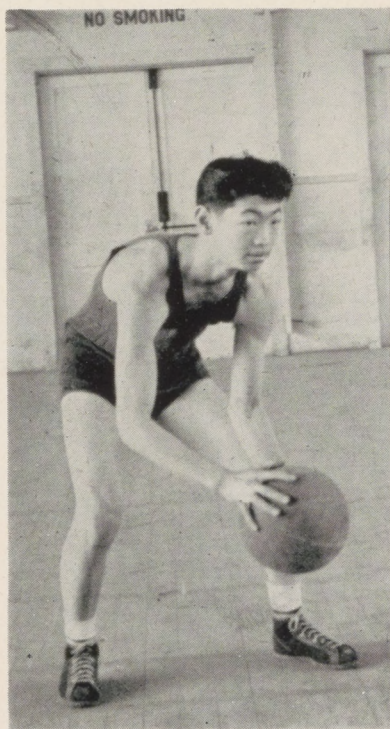
Sparked by tall Meade Squires, the Manti Templars invaded the local hardwood to give the Rams their first setback of the season with a 43-37 score. Nakata and Kashima led the Rams' attack with 8 digits each.

Again at the hands of the Manti five, the Rams came out on the short end of a 49-42 score. Doami mastered the backboard as Iwata and Sano led the scoring with 11 and 10 markers respectively.

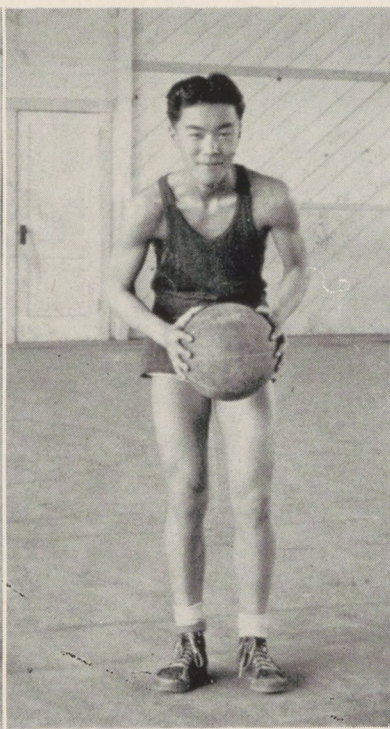
The Rams succumbed 26-17 to a powerful Delta quintet, who kept the lead throughout the game on the local hardwood. Nakata was high scorer with 8 points.

In the preliminary tilt, the Jay Vees eked out a win, the scoreboard reading Topaz 16, Delta 14.

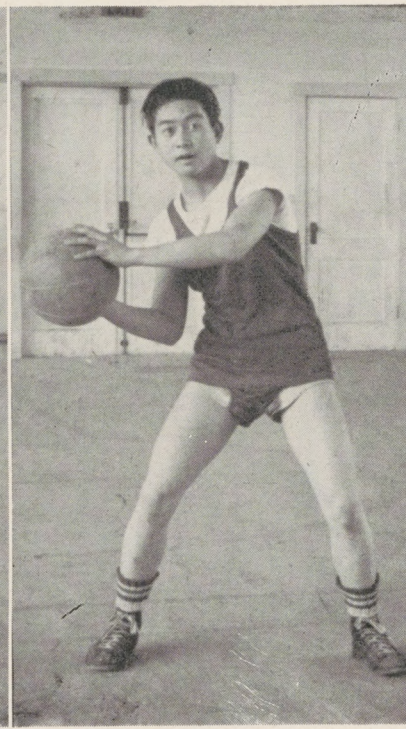
The diminutive Rams once more were set back, this time by the rampaging Nephi Wasps, as the scoreboard read Nephi 34, Topaz 25. Ike Hirota with long marathon tosses sent home 11 points.



ROY IWATA



TOSH SANO



MO MINEMOTO



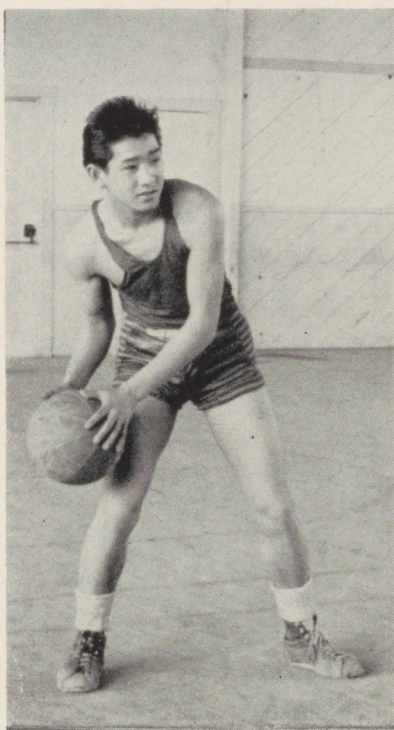
Breaking out in a fury with intricate plays and ball control, the Rams snapped their losing streak with a 38-27 win over the Wasatch Academy Tigers. Nakamura and Kashima swished the net for 1 point apiece.

Inspired by their win over Wasatch, the Rams laced the South Sevier High cagers of Monroe 30-25. Kashima tallied home 12 digits, followed by Iwata with 6.

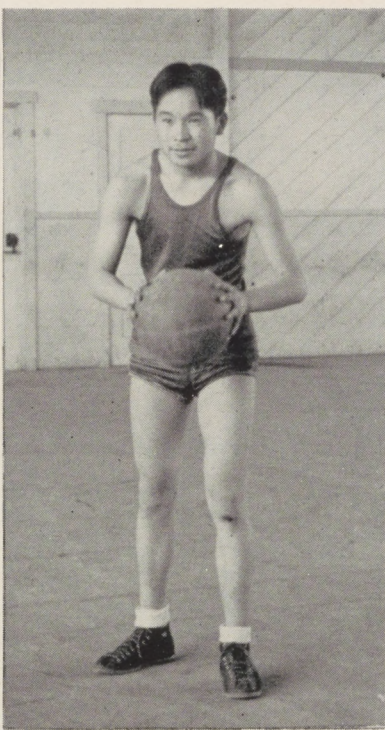
Still high from their last victory, the Rams were downed by the mighty Fillmore Eagles, who controlled the game from the start 38-22. Nakata led the scoring with 7.

Bouncing back from the Fillmore setback, the Rams ran up their highest total of the season in defeating the Hinckley Mustangs 54-36. Kashima, Minemoto and Nakata nailed home 16, 12 and 11 points respectively.

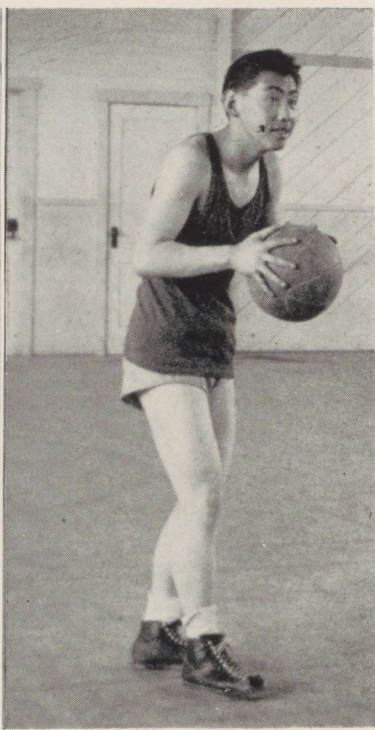
Encountering the Fillmore team once more, the Rams displayed fine ball playing but came out on the short end of a 23-20 count. Doami garnered 7 digits, followed by Iwata and Nakata with 6 apiece.



MASARU SUMIMOTO



KENJI NAGASAWA



IKE HIROTA



# GIRLS' BASKETBALL

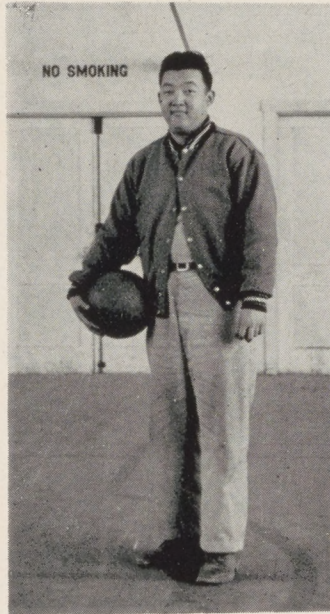
Despite any and all war-time obstacles, the girls of Topaz City High have once again forged ahead in the field of sports.

In intramural softball competition, the Double Tees proved their might by coping all their casaba tilts. Their initial encounter was with the Delta Sextette, on their hardwood, which resulted with the final score 26 to 15. The return match, played on the local court, also favored the Double Tees with the score of 22 to 10.

Inspired by previous victories, the Double Tees confidently met the Wasatch Academy girls in the latter part of March. Playing on the home court, the local girls eked out Wasatch to the tune of 29 to 22.

The sextette was sparked by Captain Wyno Nagasawa, and supported by such qualified veterans as Yoshiko Keikoan, Mits Sato, Grace Tsujisaka, and Sumi Keikoan. Other varsity girls were Margaret Kawaguchi, Kay Yoshiura, Mary Hidekawa, Asako Kawamoto, Sumi Haramaki, Merika Motoyoshi, and Etsuko Marubayashi.

The highly successful cage season was primarily due to the skillful guidance of Coach Yoshio Isono.



YOSH ISONO, *Coach*



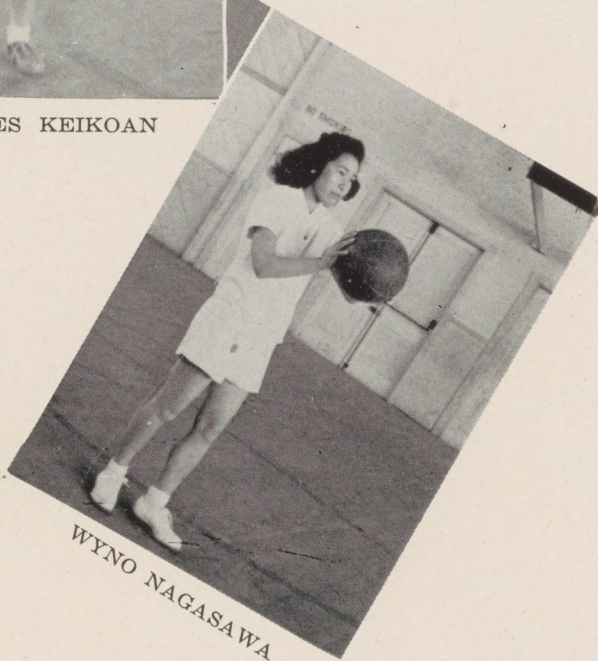
# Girls' Basketball



BUBBLES KEIKOAN



MARGARET KAWAGUCHI



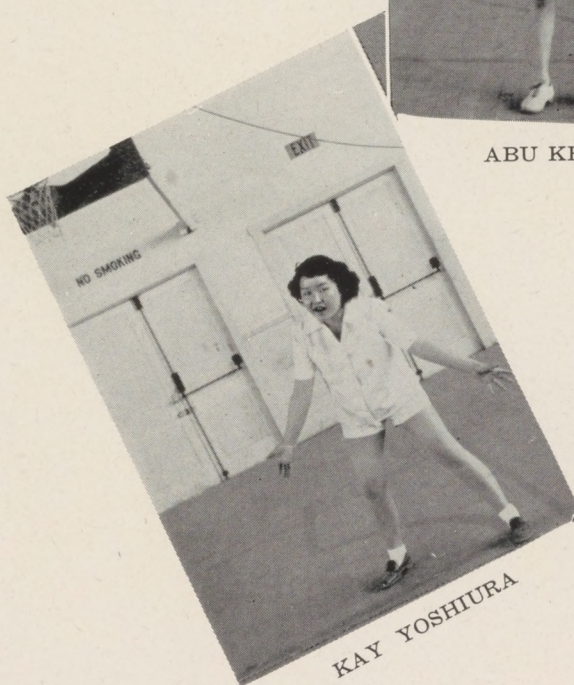
WYNO NAGASAWA



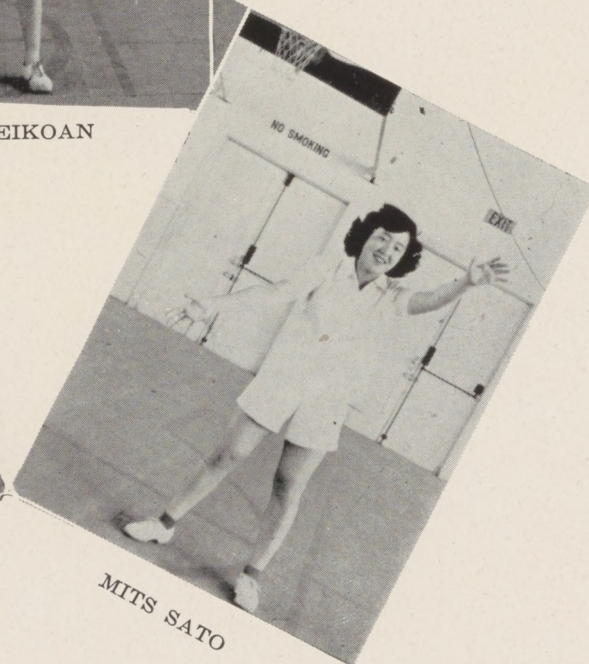
# Girls' Basketball



ABU KEIKOAN



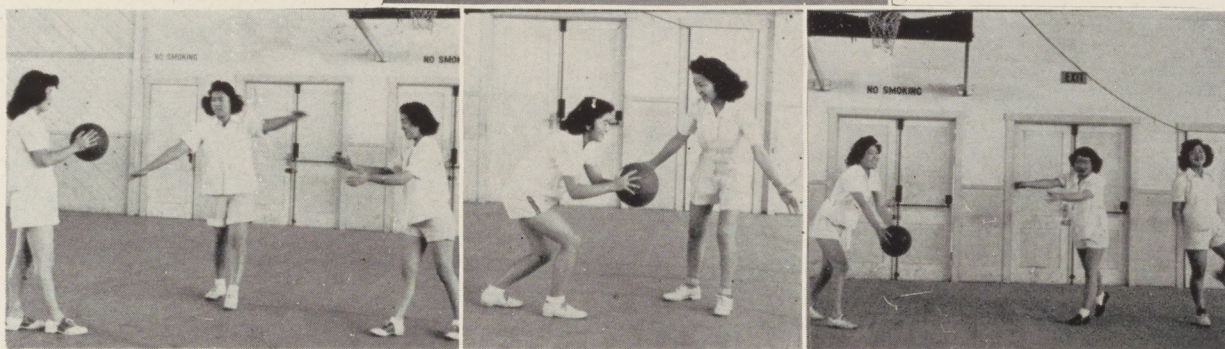
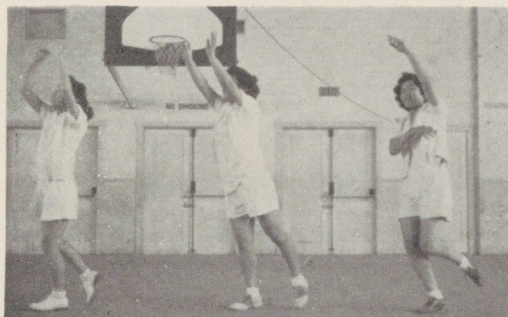
KAY YOSHIURA



MITO SATO



# Girls' Basketball



LEFT TO RIGHT: Wyno Nagasawa, Margaret Kawaguchi, Bubbles Keikoan, Mary Hidekawa, Sumi Haramaki, Merika Motoyoshi, Asako Kawamoto, Ets Marubayashi, Abu Keikoan, Kay Yoshiura, Mits Sato.



# Spring Carnival

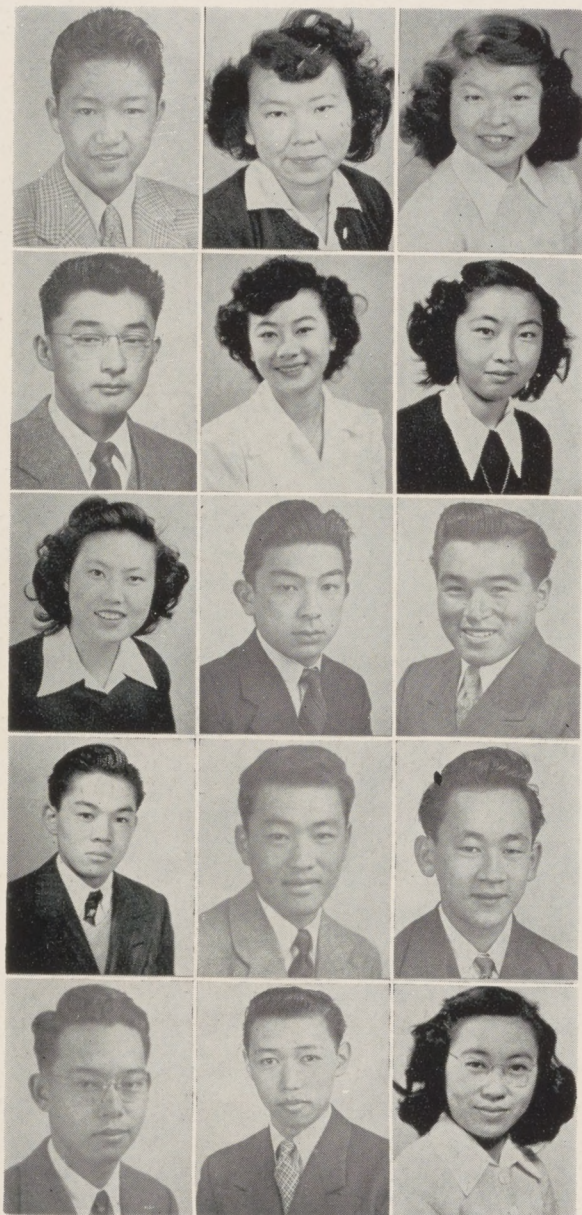








# JUNE '45 GRADUATES



HAJIME AKIYAMA, Watsonville, Calif.  
*Mechanics major; to own a garage.*

HATSUYE AOYAGI, Burlingame, Calif.  
*Science major; future musician.*

CHIYO DATE, Alameda, Calif. *Academic course; to enter the nursing field.*

DEWEY RYUNOSUKE FUJII, Oakland, Calif. *Math and history major; to attend college.*

DOROTHY HARADA, Oakland, Calif.  
*Science and math major; college-bound.*

AMY HIRONAKA, Hayward, Calif. *Art and history major; to become an army lieutenant.*

MARY HIRONAKA, San Leandro, Calif.  
*Science and history major; to be a nurse.*

SAKAE HORITA, San Francisco Calif.  
*Science major; to attend college.*

SUSUMU IWASA, Belmont, Calif. *Entering the armed forces.*

CHESTER KAKU, San Francisco, Calif.  
*Science major; future in the field of medicine.*

TOSHIRO KAWABATA, San Leandro, Calif. *Majored in science.*

GEORGE SHOICHIRO KOBAYASHI, Oakland, Calif. *Science major; future in science field.*

KUMIO KONNO, Oakland, Calif. *Agriculture major; future agriculturist.*

KIYOSHI KUSUNOKI, San Francisco, Calif. *English and History major; to become a commercial artist.*

MISAO MASUNAGA, Sacramento, Calif.  
*Commercial major; to become a nurse.*



# JUNE '45 GRADUATES

KAZUO MARUOKA, San Francisco, Calif. *Academic course; future musician.*

JOE MORITA, Oakland, Calif. *Science and math major; to enter college.*

RYO NIHEI, Hayward, Calif. *History major; future in mechanics.*

SOMAO OCHI, San Francisco, Calif. *Math and history major; plans to relocate.*

MARTHA OSHIMA, Oakland, Calif. *English and history; to attend college.*

TATSUKO OZAKI, San Francisco, Calif. *Commercial major; future secretary.*

TATSUO SANO, Berkeley, Calif. *English and math major; college-bound.*

RAY REY SONODA, Richmond, Calif. *Math and science major; entering college.*

MICHIO SUZUKI, Oakland, Calif. *Math and science major; to attend college.*

LESLIE TAKAGAWA, Oakland Calif. *Auto mechanics major; to enter trade school.*

JIMMY TAKAHASHI, Marysville, Calif. *Music and agriculture major; future in commercial agriculture.*

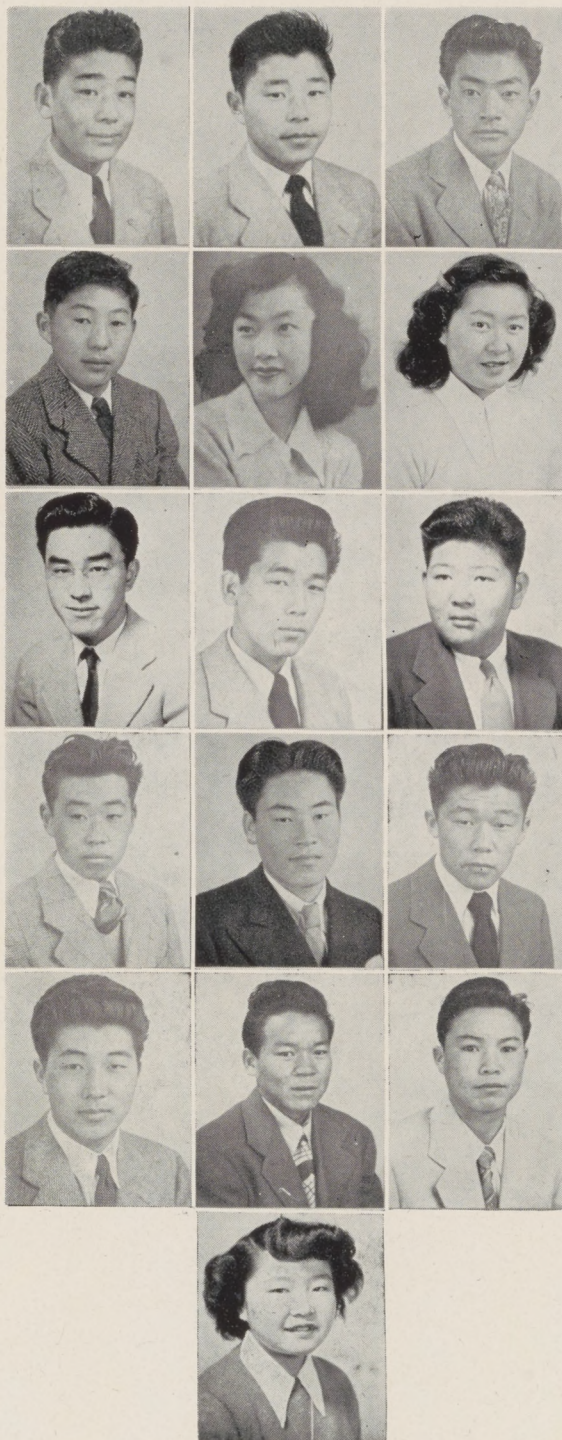
ROBERT SAKAYE UTSUMI, Oakland, Calif. *Math and history major; future engineer.*

ICHIRO YAMASAKI, San Francisco, Cal. *Math and history major; to attend college.*

TAKEHIKO YANAGI, Hayward, Calif. *Mechanics major; future mechanic.*

TAKESHI YANAGI, Hayward, Calif. *History major; to enter field of mechanics.*

KAY YOSHIURA, Oakland, Calif. *Science major; college-bound.*





# SCHOOL CALENDAR

SEPTEMBER 11 .....	Opening of the fall semester
OCTOBER 3 .....	Dr. Lester K. Ade speaks
OCTOBER 6 .....	Dr. Hachiro Yuasa speaks
OCTOBER 8-14 .....	National Fire Prevention Week
OCTOBER 14 .....	Inaugural Ball
OCTOBER 18 .....	Girls' baseball team plays in Delta
OCTOBER 25 .....	Football game here with Carbon Junior College
OCTOBER 28 .....	Football team sponsors "Ciro's"
NOVEMBER 10 .....	Hinckley vs. Topaz grid tilt at Hinckley
NOVEMBER 5-11 .....	National Education Week
NOVEMBER 13.....	Topaz-Carbon fooball game there
NOVEMBER 21.....	Delta Lions' Club presents "Land of Cotton"
NOVEMBER 24.....	Junior High Thanksgiving social
NOVEMBER 24 .....	Wasatch vs. Topaz at Mt. Pleasant
NOVEMBER 23 and 24 .....	Thanksgiving holidays
DECEMBER 2 .....	"Best Foot Forward" presented by high senior class
DECEMBER 5 .....	Manti High vs. Topaz in casaba tilt at local gym
DECEMBER 6 .....	Football game between the lower classmen and seniors
DECEMBER 6 .....	Studentbody elections
DECEMBER 13 .....	"Story of Dr. Wassell," presented by '45 Ramblings
DECEMBER 15 .....	Junior Prom: "Crystal Paradise"
DECEMBER 20 .....	Student body movie: "Passage to Marseilles"
DECEMBER 22 .....	Junior class presents Christmas assembly
JANUARY 13 .....	Freshman Prom
JANUARY 14 .....	Baccalaureate Service
JANUARY 17 .....	Senior Ball
JANUARY 18 .....	Junior High Commencement Exercises
JANUARY 19 .....	Senior High Commencement Exercises
JANUARY 20 .....	"Lady in the Dark" presented by '45 Ramblings
JANUARY 22 .....	Beginning of the spring semester
JANUARY 23 .....	Student body movie: "Princess O'Rourke"
JANUARY 26 .....	Frank Matsumoto speaks
JANUARY 30 .....	President's Ball
FEBRUARY 3 .....	Inaugural Ball
FEBRUARY 3 .....	Fillmore vs. Topaz : Double Tees vs. Delta at local gym
FEBRUARY 10 .....	Junior High Inaugural Ball
FEBRUARY 17 .....	Student body movie: "Destination Tokyo"
FEBRUARY 23 .....	Dillon S. Myer visits Topaz and speaks to student body



# OF EVENTS

FEBRUARY 25 .....	'45 Ramblings presents "As Thousands Cheer"
MARCH 2 .....	Assembly and Girls' Drag sponsored by Senior Girl Reserves
MARCH 3 .....	"The Sullivans" presented by high senior class
MARCH 8-10:	J. A. C. L. Intermountain Basketball Tournament in Salt Lake City
MARCH 9 .....	"Two Girls and a Sailor" presented by Topaz Hi-Y
MARCH 16 .....	Double Tees play Wasatch Academy at local gym
MARCH 17-18 .....	Spring Carnival
MARCH 23 .....	"Pin-Up Girl" sponsored by high school basketball team
MARCH 28 .....	Clean-up Day
MARCH 29-30 .....	Spring Vacation
MARCH 31 .....	Student body movie: "Northern Pursuit"
APRIL 6 .....	Doubles Tees travel to Wasatch Academy for return match
APRIL 6 .....	Assembly presented at Hinckley by Topaz
APRIL 7 .....	Junior Prom: "Lost Horizon"
APRIL 12.....	Senior class sponsors "Dixie" in conjunction with New Orleans Week
APRIL 13 .....	Memorial assembly honoring the late President Roosevelt
APRIL 16 .....	Student body movie: "A Guy Named Joe"
APRIL 17.....	Casaba tilt between the Senior Girl Reserves and the Just Us Girls organization.
APRIL .....	Hinckley presents assembly to Topaz High student body
APRIL 20 .....	Sophomore class assembly
APRIL 21 .....	"Starlit Hour" sponsored by Hi-Y
APRIL 25—	Ceremony in conjunction with the opening of the World Security Conference in San Francisco
APRIL 27 .....	Home Economics Club assembly
MAY 4 .....	Junior class assembly
MAY 11 .....	May Festival
MAY 15 .....	Senior Control Day
MAY 18 .....	Girls' Association Assembly
MAY 27 .....	Baccalaureate Service
MAY 28 .....	Senior Banquet
MAY 30 .....	Senior Ball
MAY 31 .....	Junior High Commencement Exercises
JUNE 1 .....	Senior High Commencement Exercises



# SENIOR WILL

## January, '45 Graduates

SEIKO AKAHOSHI wills her  
giving to all wall-flowers.

Wacky can certainly use some  
of that politeness SUMIYE  
AKIYOSHI is leaving for him.

TAK DOI should leave her pop-  
ularity so that it can be dis-  
tributed among the wall-flow-  
ers.

TOMIKO ENDOW bestows her  
ability to remain inconspicuous  
to Richard Yamashiro.

YAS FURUYA leaves for better  
or for worse.

LILLIAN HIROSE wills herself  
to Topaz City High School.

TERUKO HITOMI'S silly ways  
aren't being willed to anyone  
'cuz she's taking 'em with her.

NATSUKO IKEDA bestows her  
ever faithful jeans to Mabel  
Takanashi, hoping she'll use  
them for gym.

TERUKO KANEKO'S feminin-  
ity can surely be used by the  
Senior G. R.'s.

Tom Okai take good care of  
KAYE KANZAKI'S white  
complexion; she's willing it to  
you.

Mr. Maggiora had better ap-  
preciate what SHIZ KASHI-  
WABARA is leaving for him.  
(Her knitting.)

TOMOYE KATAYAMA be-  
queathes her Pat Boyd part to  
Betty Nakamura.

CLARA MABUCHI bestows her  
sweetness on Harry Yuki.

ASAKO MARUYAMA gives  
her lady-like manners to Tut  
Hirano.

JOHNNY MIYAGAWA leaves  
his job at the Motor Pool for a  
higher education.

FLORENCE NAGANO leaves.  
(For Boston, Mass.)

KAZU NAO wills her long hair  
to Margaret Kawaguchi.

DOROTHY NOMURA wants  
Mich Yoshida to have her  
height.

Sab Matsuzaki, we hope you  
appreciate EMILY OSUGI'S  
girlish look, because she's  
leaving it for you.

ICH OZAWA will not will Date  
to anyone.

MASAAKI SAKAGUCHI pro-  
mises to save his sly glances  
for W. N.

TOSHI AKI SAKAGUCHI  
wills his ability to find things  
to do at home during school-  
time to Chester Kaku.

YAE SATO wills her canteen  
job to any girl interested in the  
P. O.

ELLEN SHIMADA leaves her  
natural curls to Clem Nakai.

ELSIE ITASHIKI leaves her  
bangs to Eddie Iwata.

SHIG ISHIHARA'S judicial  
worries will leave with him.

SACHI KINOSHITA bequeaths  
her cosmetics to Wyno.

NAOMI KITAGAWA'S beauty  
should be left to the faculty.

FRED OTSUJI'S bashfulness  
could certainly be used by a  
certain bunch of boys.

MARIKO SHINODA'S versa-  
tility will be left for Hisashi  
Nakao.



## SENIOR WILL

LILY TAMURA *leaves her good manners for the Boosters.*

HARVEY SHIMADA'S *build will be left for Mary Sakashita.*

*What's left of* JOE SUYEMOTO'S *brains after his finals is left for Daisy Uyeda for her finals.*

AIKO TAKITA'S *love for music was grabbed by Jo-Jo.*

MICHI TAKAHASHI *wills her mellow voice to Joe Goto.*

MARY TAMAKI'S *red coat will be left to the Mackinaw girls.*

YUMI TSUGAWA *leaves herself for Takara.*

AILEEN YAMATE'S *unique walk left with her.*

YUTAKA YOSHIDA *wills his ability to disappear to all future editors of the Rambler.*

SUE YOSHIURA *bestows her collegiate look on the faithful jeans wearers.*

JURO HAYASHIDA'S *conscientiousness should be left to all.*

## SENIOR WILL

### June, '45 Graduates

EDITH ABEY *bequeaths her Japanese dancing talent to all future aspirants.*

WASCO AKITA *leaves her sparkling smile to all sober students.*

HAJIME AKIYAMA *wills his interest in aeronautics to himself forever.*

HATSUYE AOYAGI *wills her violin playing to Mits Sato.*

TOSHIKO AOYAGI *wills her sweet, quiet voice to Rosie Moritomo.*

KEN ASAZAWA *leaves his squeaky shoes for Mr. Anderson.*

ROSE ASOO *leaves her friendliness to all friendless students.*

ISAO BABA *wills his welding ability to the defense workers.*

PAUL BELL *leaves to himself the memories of all the headaches and fun he had in Topaz.*

CHIYO DATE *wills her mellow voice to Midori Ogo.*

JUNJI DOAMI *bestows his personality, looks, and hard-working ability on you, dear reader.*

CARVIN DOWKE *leaves.*

JUNE EGASHIRA *would like to leave her singing talent to Mr. Maggiora.*

DEWEY FUJII *leaves his boots and saddles to all zoot-suiters.*

HANAKO FUJII *leaves her likeability to students of Topaz High School.*

MARY FUKADA *wants to be willed some height from Sets Yamane.*

WARREN FUKUHARA *leaves his bookkeeping books with Ben Nakahira.*

MIYEKO FURUSHO *wills her tailoring ability to all future tailors.*



## SENIOR WILL

### JUNE, '45 GRADUATES

JUJI HADA *wills his title of King of Topaz High to Hid Kashima.*

ROY HAMACHI *wills his presiding ability to future presidents.*

SADAME HARA *leaves her sarcasm to Kathleen Asano.*

DOROTHY HARADA *wills the song "Sonny Boy" to a certain male individual.*

YOSHI HARAMAKI *bequeaths her ability in sports to Miss Crosbie.*

NOBUTOSHI HATASHITA *leaves his good looks to the boys of Topaz High.*

BETTY HAYASHI *wills her sweetness to the moody ones.*

KAZUKO HIDESHIMA *gives her petiteness to Chiharu Kubekawa.*

AMY HIRONAKA *wills her industrious attitude to Tsuneo Okawachi.*

MARY HIRONAKA *leaves her creamy complexion to her twin sister.*

SAKAE HORITA *wants to be willed some height from Abu Keikoan.*

KIYOTO ICHISAKA *wants to be donated some fat from any girl.*

KIMIYE IHARA *bestows her white complexion on Tak Iwamoto.*

RUBY IKEDA *wills her height to Masako Tsuzuki.*

FRED IKENOYAMA *leaves Topaz his "ike" and his "yama."*

TAKARA INOUE *wills his ability to go steady to the Topaz casanovas.*

KUMIKO ISHIDA *bestows her large eyes on Bettina Bolegard.*

TATSUKO ITO *wills herself to the public library.*

MARY IWAKI *leaves her speaking ability to future commencement speakers.*

SUSUMU IWASA *leaves his clean saddles to all Topaz ceds.*

JANET IWASAKI *leaves her hour-glass figure to less fortunate gals.*

EDWARD IWATA *wills his auburn hair to the Topaz Wig Company (if there is such a thing.)*

CHESTER KAKU *leaves his politeness and neatness to all Topaz boys.*

HARRY KAWABATA *bestows his ability to look busy to all those bumming around school.*

TOSHIRO KAWABATA *wills his bashfulness to all Topaz rowdies.*

SHIGERU KAWAMOTO *wills his future to the armed forces.*

ROY KAWAMURA *leaves his boldness to all Topaz sissies.*

NATSUKO KAWATA *leaves her studying habits to all future scholars.*

YOSHIKO KEIKOAN *wills her famous "left hook" to Rosalind Uyeda.*

SOTOI KENMOTSU *leaves his "V" shape physique to Kaz Kotake.*

ERNEST KIKUCHI *bequeaths his earnest and helpful hand to those who need it.*

JOE KIMURA *wills his bashful smile to all the girls.*

TATSUE KIYOMURA *bestows herself on a tailor shop.*



## SENIOR WILL JUNE, '45 GRADUATES

AYAKO KOBAYASHI *leaves her high-jumping ability to all fragile girls.*

MARY MATSUMOTO *bestows her Betty Grable legs on those possessing "daikon ashies."*

HENRY NAKAMURA *leaves Fumi Watanabe his quiet nature.*

GEORGE KOBAYASHI *leaves his ability to get away with murder to all those not so fortunate.*

YOSHIO MATSUNAMI *wills his tinted glasses to Mr. Anderson.*

JAMES NAKAMURA *leaves his Ish Kabibble look to Lola Tsuchida.*

KUMIO KONNO *wills his inconspicuous manners to Sab Matsuzaki.*

JOE MORITA *wills his widow's peak to Grace Tsujisaka.*

MARY NAKASHIGE *leaves her bandanna to Dickson.*

TOMIKO KUMAGAI *leaves her hair-do to Mrs. Matthews.*

MASAYOSHI NAGAMOTO *leaves his easy-going ways to the students who are always in a hurry.*

AKIO NAKATA *bequeaths his dead-eye for basketball to William Mizono.*

RYOZO KUMEKAWA *leaves. He has had enough of Topaz High School headaches.*

EMI NAGASAWA *wills her pep to Yoshiye Yamashiro.*

SHIZUO NAMBA *wills his hair to Billy Shin.*

KIYOSHI KUSUNOKI *leaves his "fine" records with the C. A. S.*

KIKO NAKAGIRI *wills herself to the European Theater of War.*

RYO NIHEI *leaves his history and English where it should be left.*

RURI MARUBAYASHI *leaves her very short height to Kikuye Hayashida.*

RITSKUO NAKAHIRA *wills her supply room to Mr. Maggiora.*

JIM NODA *bestows his corniness on John Kamada.*

KAZ MARUOKA *leaves his instrumental talent to those who can't play a note.*

HIROKAZU NAKAI *leaves his sweet nature to Akira Hirota.*

EUGENE NODOHARA *leaves his Japanese dictionary to Myrna Maas.*

TOMMY MASUDA *wills his athletic ability to Harold Hayashi.*

ROSE NAKAMOTO *wills her quiet ways to the aggressive students.*

SOMAO OCHI *wills his many girl swooners to Frank Sinatra.*

MISAO MASUNAGA *bequeaths her sweetness to all rugged girls.*

BETTY NAKAMURA *wills her Hawaiian prints to the Topaz Consumers' Cooperative Enterprise.*

YOKO OGATA *wills her intelligence to Margie Yamaguma.*

AGNES OGAWA *leaves her typing ability to future key-pounders.*



## SENIOR WILL

### JUNE, '45 GRADUATES

KIYOSHI OGO *wills his artistic ability to the Art class.*

WICHI OHARA *wills his name to Ireland.*

HIRO OKADA *wills his dark glasses to anyone needing them to shield his eyes from the blinding beauties of Topaz.*

GEORGE OKAWACHI *wills himself to Lena Sato.*

KAZUE OKU *leaves her goodwill to the school.*

FUMIKO OKUMOTO *wills her innocent look to Kaz Yuto.*

PAUL ONO *wills his scientific mind to the scrambled-brained high juniors.*

MARTHA OSHIMA *leaves her glamour with all Topaz bags.*

HIROSHI OTA *leaves his driving ability to all women drivers.*

TERUMI OTSUKI *leaves her nursing ability to the hospital patients.*

TATSUKO OZAKI *leaves her broad shoulders with Miye Yoshimori.*

FUMI SAIKI *leaves her peachy complexion with Ruth Shiraki.*

JEAN SANFORD *wills her blonde locks to Etsuko Marubayashi.*

RICHARD SANJO *leaves his auto mechanics ability to all garage workers.*

TATSUO SANO *leaves his high I. Q. with the many Topaz morons.*

TAKEO SASAKI *leaves his large strides to the couples walking home from the Topaz dances.*

LENA SATO *wills her lavender sweater to all sweater girls.*

RUBY SATO *leaves her voice to all carnival barkers.*

YOSHIO SHIMADA *wills his future to the army.*

MITSUKO SHIMAMURA *leaves her sports ability to our fragile femmes.*

JUNE SHIMOSAKA *leaves her Nurses Aide uniform with the hospital.*

PEGGY SHIOZAWA *wills her slim figure to the applicants for the DuBarry Course.*

RAYL SONADA *wills his innocent look to Tosh Yuto.*

YUKI SONODA *leaves her brownette hair to Cherry Tamura.*

MASARU SUMIMOTO *wills his hat to the cleaners (that is if they can do something with it.)*

MICHIO SUZUKI *wills his red coat to Santa Claus.*

LESLIE TAKAGAWA *leaves us wishing for that Tak Eshima look.*

HIDETOSHI TAKAHASHI *wills his perpetual smile to Lee Suyemoto.*

JIMMY TAKAHASHI *wills his ability for making excuses to Mutts Hayashi.*

MARY TAKAHASHI *leaves all her books with Shig Hotta.*

TOKI TAKAHASHI *leaves her sisterly love to Midori Kawaguchi.*



## SENIOR WILL

### JUNE, '45 GRADUATES

WILLIAM TAKAHASHI *wills some of his brains to the less fortunate ones.*

TONY TAKAI *wills his efficiency with the P. A. system to future technicians.*

KAORU TAKAKI *leaves school with satisfaction.*

TERUYO TAMURA *wills her height to Kimiko Kitagaki.*

YUKI TSUCHIHASHI *leaves her sweet nature to temperamental students.*

MARY TSUCHIYA *leaves some of her brains to the less fortunate ones.*

ALICE TSUJISAKA *wills her soft-spoken voice to May Takakuwa.*

ROBERT UTSUMI *leaves Sachiko to no one but himself.*

DAISY UYEDA *wills her black-suede ankle-straps to the girls attending the Senior Ball.*

AMY YAMADA *leaves her Honor Society key to Tut Hirano.*

TOM YAMADA *wills his quiet manners to Edwin Takahashi.*

ICHIRO YAMASAKI *leaves his wavy hair to Akito Sunada.*

RICHARD YAMASHIRO *leaves his soprano voice to the Choral Club.*

HERBERT YAMATE *wills his future to medicine.*

TAKEHIKO YANAGI *leaves his welding ability to Shoji Shimizu.*

TAKESHI YANAGI *wills his brotherly love to Keiji Yamasaki.*

KIYOKO YOSHIDA *wills her typing ability to Margie Motooka.*

YAEKO YOSHIFUJI *wills her secretarial ability to future secretaries.*

PATTY YOSHINO *wills her angelic look to the "Dead-End" kids.*

KAY YOSHIURA *leaves her feather cut bob to Amy Tamaki.*

HIROKO YOSHIWARA *wills her pleasant voice to Mary Yasutake.*



# NEW FACULTY MEMBERS

The perpetual change in the Topaz High School teaching personnel has made it impossible to mention all of the instructors in the Administration Section.

With gratitude for their invaluable services and full recognition of their abilities, the '45 Ramblings Staff takes this opportunity to give due credit to the late-comers.

*Mrs. Betty Jane Matthews* of Edmond, Oklahoma, teaches English. Prior to coming to Topaz Mrs. Matthews taught aeronautical mechanics.

*Miss Patricia Bond*, of Wabash, Indiana, taught in Tule Lake before coming here to teach English and world history.

*Miss Jessie Long*, of Prague, Oklahoma, is a social studies instructor. She formerly taught at the Gradfield High School and the Weleetka High School in Oklahoma.

*Mr. Henry Raddatz*, a native Utahn, specializes in manual training, mechanical drawing, and math. He was previously employed in a California aircraft plant as a pattern maker.

*Mr. and Mrs. Ishmael Looper*, of Oklahoma City, Oklahoma, reported at the beginning of the spring semester. Mr. Looper, formerly affiliated with the Oklahoma City Air Service Command, now teaches auto mechanics, while Mrs. Looper instructs in social studies. She was the department head of Home Economics at the University of Oklahoma.

*Mr. Hisashi Tani*, while waiting for his active duty notice, is an instructor of commercial art. Mr. Tani, born in Helper, Utah, had been attending the San Francisco Junior College, majoring in mechanical engineering, before evacuation.

*Mrs. Grace Thornton*, of Ardmore, Oklahoma, teaches biology, math and English. She taught English at the University of Oklahoma before reporting to Topaz and is a life member of the National Educational Association.



# Hail Alma Mater

— By —

*William Oshima, Lyrics — David Iino, Music*

All hail, Topaz High School,  
A torch that our paths will light,  
Our colors, the Green and Gold,  
Shall symbolize our might.

From far and wide we've gathered,  
And made now into one,  
We'll cherish this, our Alma Mater,  
Which will not go unsung.

All hail, Topaz High School,  
We'll leave thee with spirits fine,  
And hope we will prove to be  
Ever worthy sons of thine.

Our steps for long you've guided,  
And now without a fear,  
We're proud to leave as part of you,  
Our Alma Mater dear.



# APPRECIATION

To the following individuals, organizations, and groups we wish to extend our sincere appreciation in acknowledgment of their unstinting service and contributions:

The members of the Ramblings Staff, to whom should go most of the credit for the realization of this project because of their indefatigable efforts.

Our advisors, Mr. Robert Maggiora and Mrs. Marvin Palecek, for their invaluable aid and guidance in producing our yearbook.

Mr. Harrison Conover and his staff of the Art City Publishing Company, for their splendid service in the printing of this book.

Mr. Kinji Utsumi and the Coop Photo Studio, for their unselfish contribution of time and energy in the production of our diverse photographs.

Mr. Hisao Sakuda of the Community Activities Section, for the many hours spent in running the projector during the showing of our benefit movies.

The Topaz Cooperative Enterprise, for its generous contribution of prizes during the Ramblings' Spring Carnival.

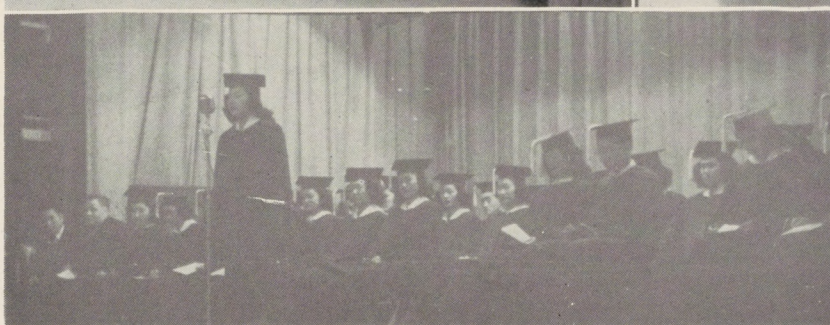
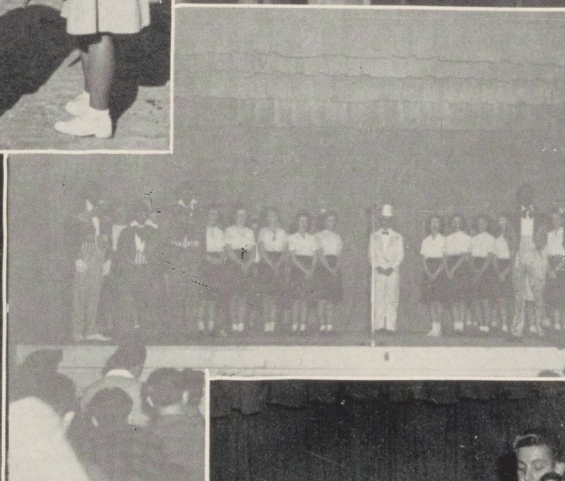
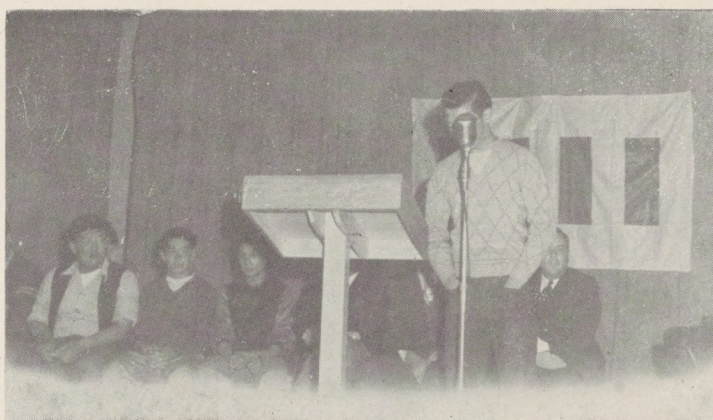
The Project Reports Division, for its cooperation in supplying snapshots of center activities.

Every one of the many friends who participated in or assisted with the various benefit activities held throughout the fall and spring semesters.

RYOZO KUMEKAWA,

Editor, '45 Ramblings











AUTOGRAPHS



AUTOGRAPHS

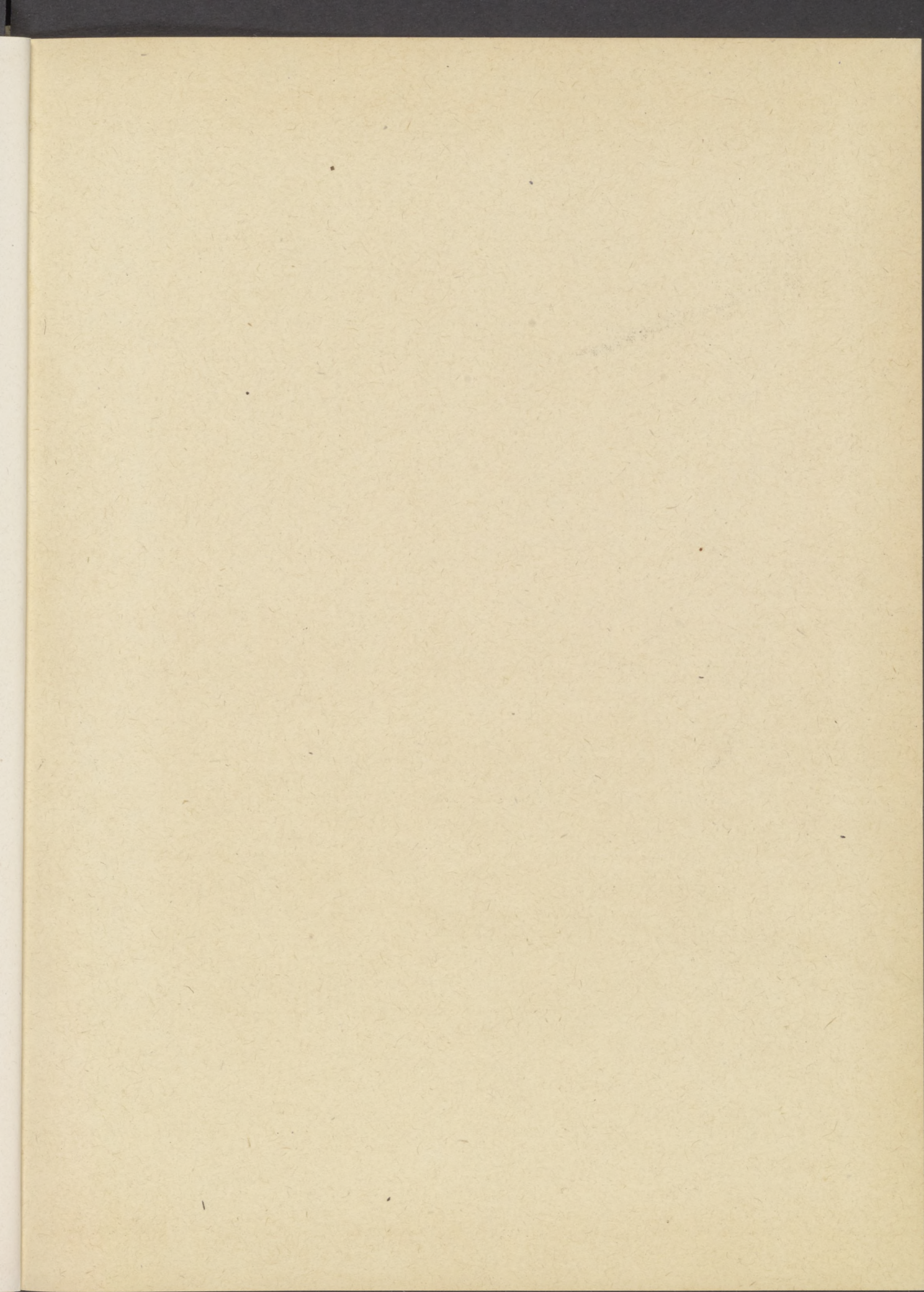


AUTOGRAPHS



AUTOGRAPHS







WRA Library Washington

