

K 4.37:3

3683

1945

67/14  
C

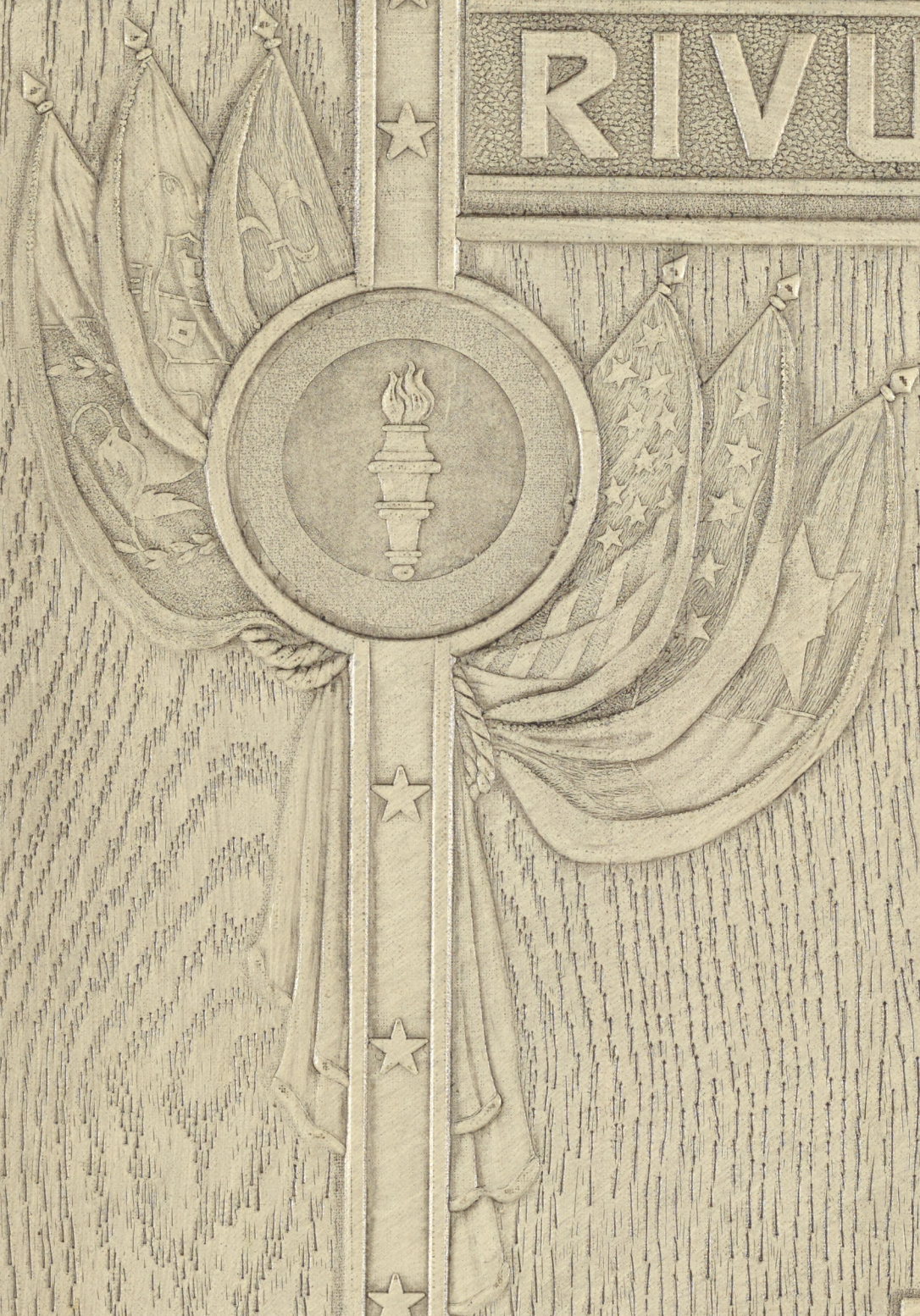


K434

The



RIVULET



1945



WRA Library Washington



CV<sup>o</sup>

WPA Library Washington







1942  
RIVULET  
1945

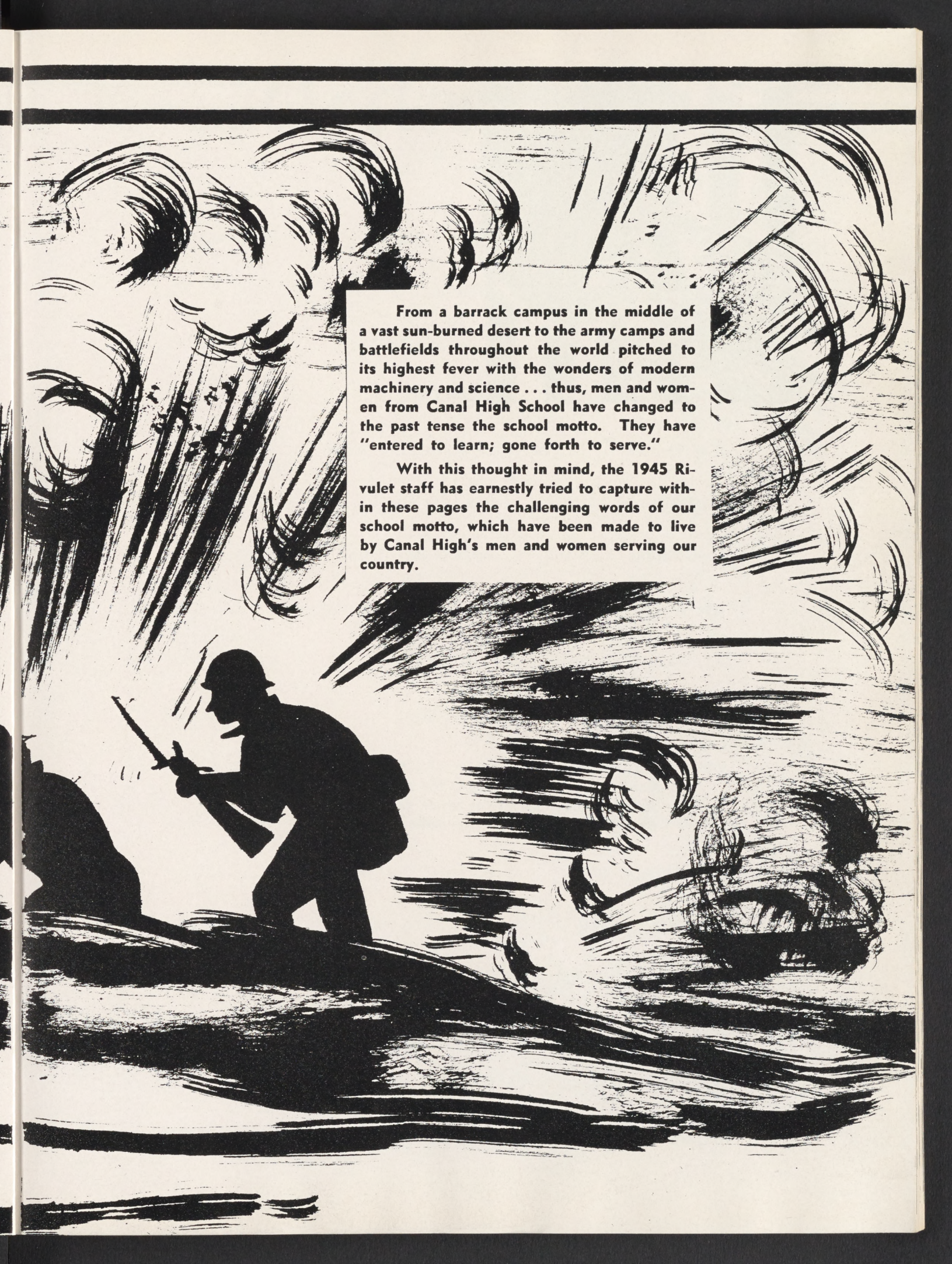
CANAL  
HIGH  
SCHOOL  
RIVERS - - ARIZONA



# Foreword







From a barrack campus in the middle of a vast sun-burned desert to the army camps and battlefields throughout the world pitched to its highest fever with the wonders of modern machinery and science . . . thus, men and women from Canal High School have changed to the past tense the school motto. They have "entered to learn; gone forth to serve."

With this thought in mind, the 1945 Rivulet staff has earnestly tried to capture within these pages the challenging words of our school motto, which have been made to live by Canal High's men and women serving our country.





Not to one, but to many . . . the students of  
Canal High School serving in the armed forces of  
America and fighting for ideals dearer to them  
than life . . . we humbly dedicate this book.



# Dedication

WASCO ANDO . . . MINORU AOKI . . . SAM FURUKAWA

JOE HAMAGUCHI . . . ACE ISAO HANDA . . . TAKASHI HASHIMURA

SATOSHI HATA . . . STEPHEN ICHIKI . . . TOM MAKOTO KAITA

TED U. KATSUURA . . . JOHN KIMURA . . . ROY TAKEO KODA

TED KOMOTO . . . HARRY HARUO KOUNO . . . WILSON T. KUMATAKA

JIMMIE KURATA . . . GEORGE MASAKI . . . HANDY H. MATSUDA

BEN N. MATSUI . . . GEORGE MURAKAMI . . . JAMES T. MURAKAMI

MATSUKIYO MURATA . . . HIROSHI MURAYAMA . . . TED TERUO MUTO

TOM NAGATA . . . ED NAKAMURA . . . JOHN H. NAKATA

ISAMU NAKATSUKA . . . BOB S. NAKAYAMA . . . JIMI ODA

GEORGE OGINO . . . GEORGE OMORI . . . HIROSHI OTO . . . TOSHIO OTO

GILO OTOMO . . . TERUO RYONO . . . ANDREW SEGIMOTO

WILLIAM SEIJI . . . MASARU SHIMIZU . . . KIYOTO SHINMOTO

MINORU SHINMOTO . . . NOBUO TAGAWA . . . JAMES TAKEMORI

TOM TANOUYE . . . TOM TERAMOTO . . . ROY TORII . . . JIM TSUJI

HARRY WAKI . . . MIYOJI YAMADA . . . JIMMY YAMAGUCHI

TONY YAMAOKA . . . ROBERT YAMAZAKI . . . SAM YOMOGIDA

NOBUTO YOSHIDA . . . MASARU YOSHIKAWA . . . KAZUMI YOSHIMOTO



# Principal's Message

Canal High School, organized to provide educational direction for this group of American citizens of Japanese ancestry during the three year period when they were removed from their former homes, has now fulfilled its purpose. Its students will transfer to public high schools throughout the nation and its graduates will attend colleges or enter occupational activities. A majority of the students have made superior academic records and have participated widely in the extra-curricular activities. This accomplishment may be attributed to a consuming desire to excel and to profit to the greatest possible degree, an attitude that is typical of the students who have attended this high school.

In future years we shall look back upon these days with conflicting emotions. However, those who spent a part of their formative years in this school will remember it as a pleasant and profitable period. Here they built for themselves a high school where, under the leadership of their own freely elected student officers, they experienced living in a democratic society. Here they found highly trained, sympathetic teachers who led them away from their fears and forward to an optimistic attitude toward their problems and their future. Here they found the courage and the determination to build for themselves a better life in a better world.

In this final message I want to express my sincere appreciation to an excellent faculty, a helpful Parent-Teacher Association, a thoughtful and sympathetic community, a hard-working, cooperative student body, and to a wise and considerate administration. Whatever degree of success we have achieved may be credited to the united efforts of all.

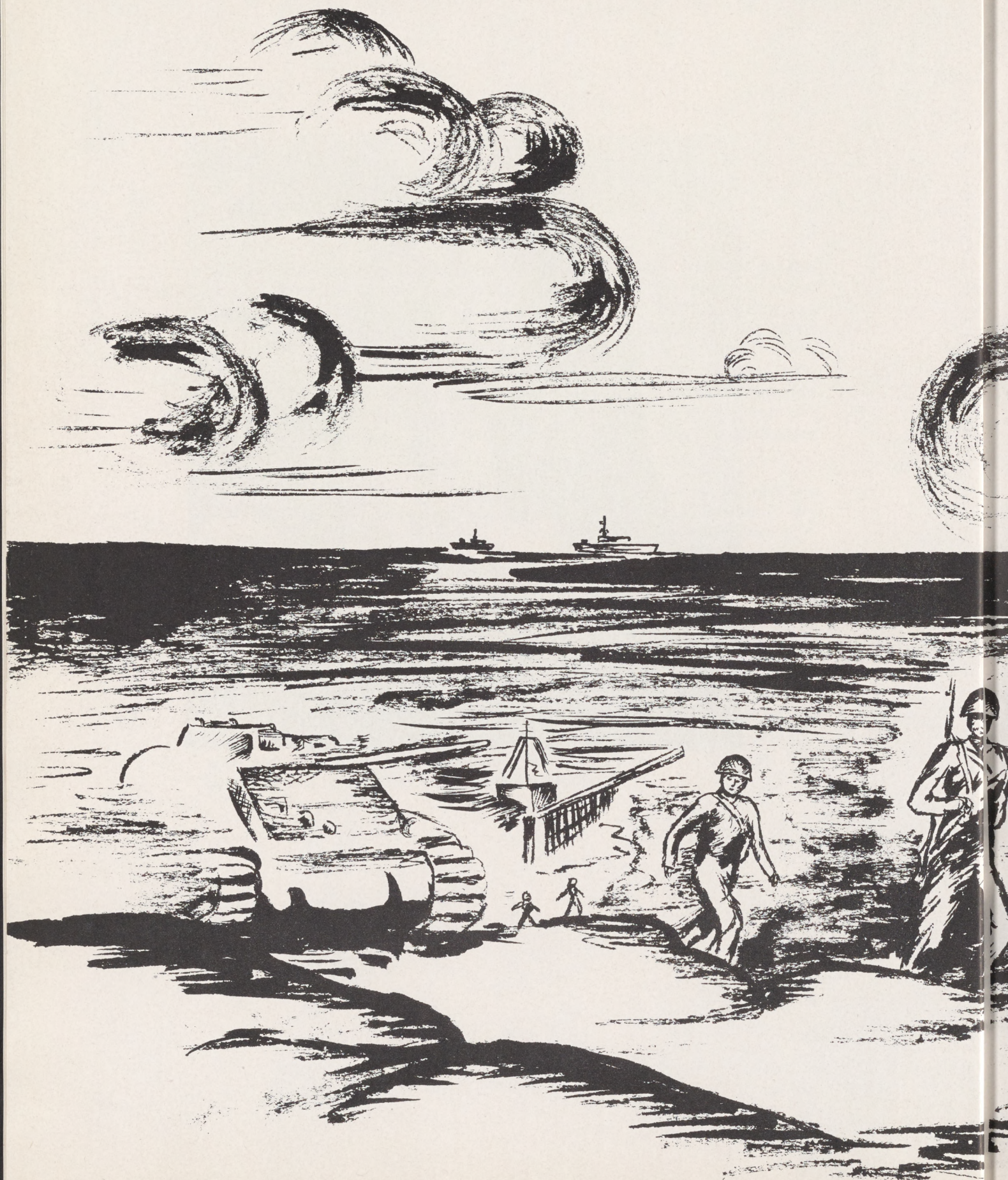
J. P. McVey



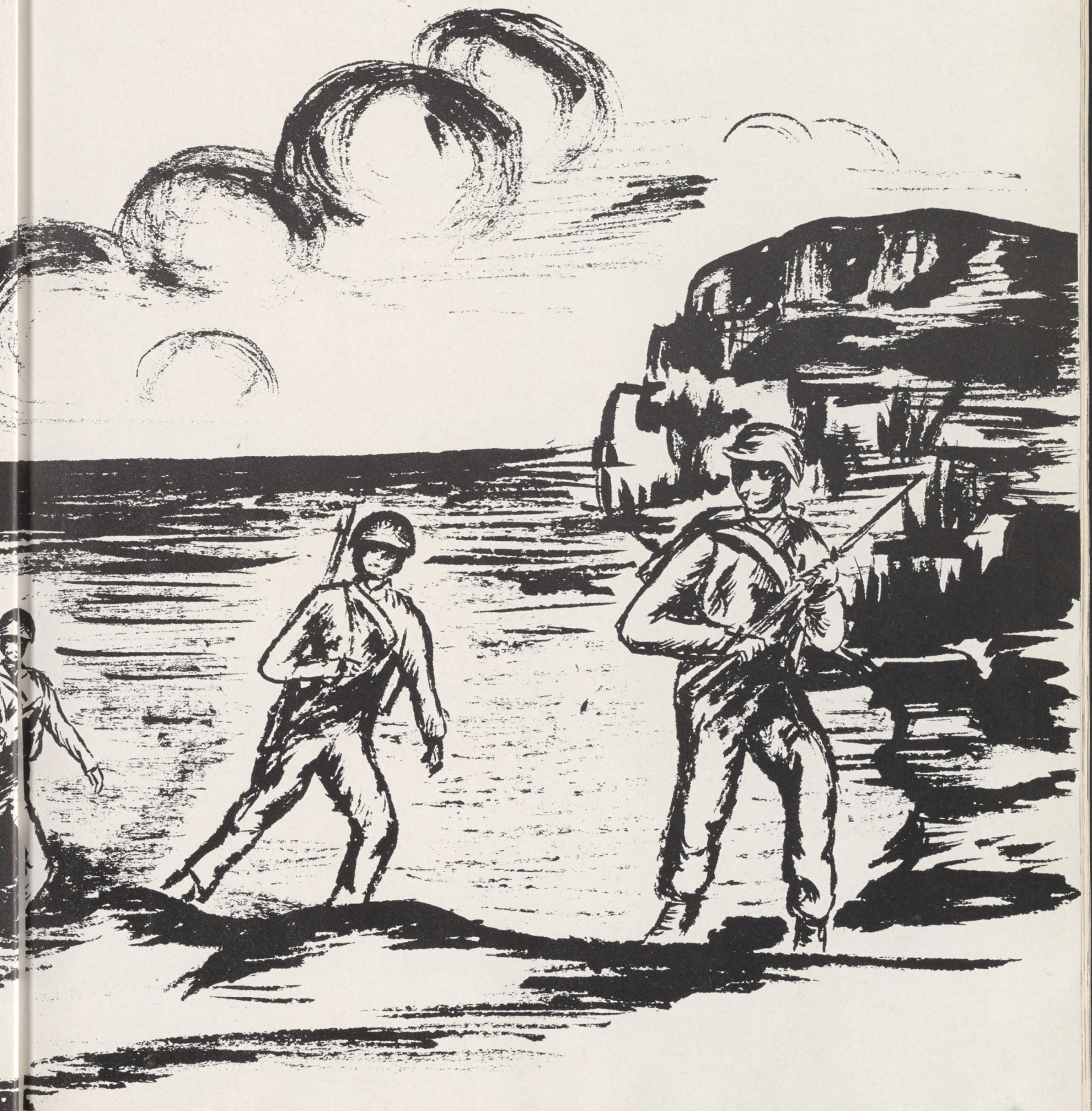




# Administration





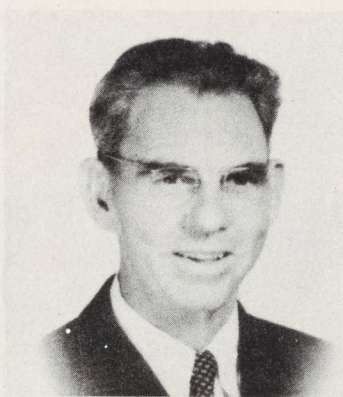




# Faculty



MASON W. DAVIS  
Boys' P. E.  
Science  
Math.



LESLIE N. GEORGE  
Agriculture  
Chemistry



MAXINE W. HAGAN  
English  
Soc. Science



RUTH HAMATAKA  
Art



WARREN D. HIGGINS  
Music  
Soc. Science



ELIZABETH M. ERWIN  
English  
Soc. Science  
Spanish



CECILE E. LANCASTER  
English



MARY E. MARK  
GIRLS' P. E.  
Music



SAM MATSUMOTO  
Band

TOMIKO OKUDA  
Home Economics



GEORGE Y. ONODA  
Math.  
Science

MARY OTA  
Library



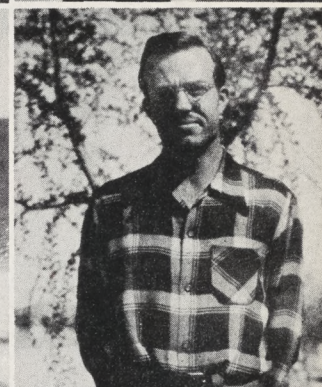
RAYMOND E. RAGSDALE  
Band  
Orchestra

JARVILLE H. RENNICK  
Band  
Orchestra



TETSUO SANTO  
Boys' P. E.

ROBERT T. SLATE  
Art  
Shop



HELEN SUGAI  
Library

HELEN TANAKA  
Typing



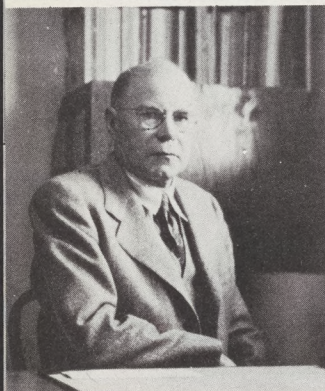


# Faculty



DELLA M. TAYLOR  
Commerce  
Math

MABEL M. VODAK  
Home Economics



MARION B. WILLIAMS  
Vocational Advisor

TOMIO YAGURA  
Orchestra

# P.T.A.

The Parent-Teachers' Association of Canal High School has made our school year of '44-'45 a successful one. The purpose of this association is to bring a better understanding between teachers and parents and to secure greater advantages in education for every student.

In the line of social activities, the Parent-Teachers' Association presented a party to members of the Junior and Senior play casts. They bought caps for members of the band, and also helped the Juniors in making the Junior-Senior Banquet an enjoyable one.

We, the Student Body of Canal High School, wish to thank the Parent-Teachers' Association of Canal for its great interest in our school.



# Office



HELEN TANIGAWA



TOMIYO HAYASHI AND TAKAYO KOBAYASHI



# Student Relocation Office



Left: Miss Maxine Hagan



Above: Mrs. Mary Osugi

The purpose of the student relocation program is to aid students in relocating into institutions of higher learning.

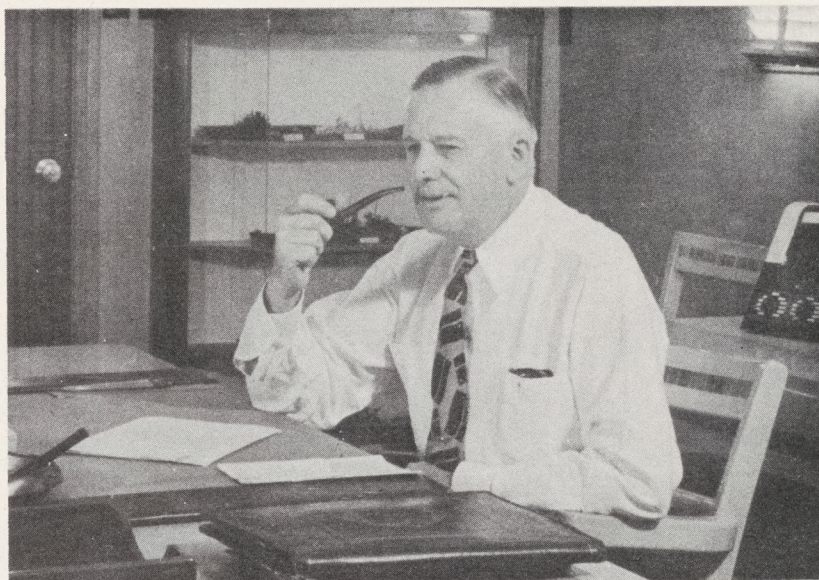
Interviews are held with pupils to plan for a college in case they wish to continue their education after graduation. These students are advised by the counselor as to the choice of college and trade school as they consider different fields. The rating of the colleges is checked as is also the student's financial condition. If financial aid is needed, it is secured from Student Loan Funds provided by various organizations such as church aid group scholarships and student aid funds in the colleges. The Central Relocation Office also gives assistance.

A follow-up service is offered as a check-up on the results of the relocatees in order to obtain the percentage of college relocation. Correspondence is continued with the relocated student to guide him with problems he faces after entering college. Often this correspondence leads to the successful relocation of other students in the institutions where the way has been prepared.

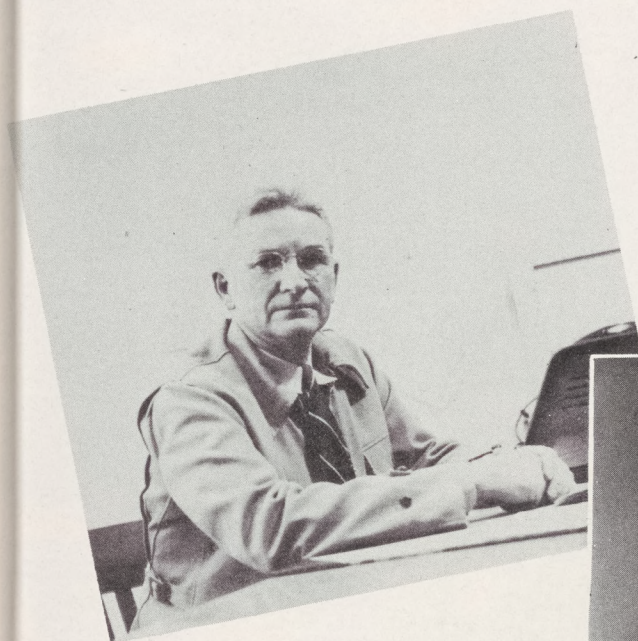
Through the student relocation office, it is possible to obtain guest speakers who talk to the students about their respective areas or give beneficial information concerning relocation.



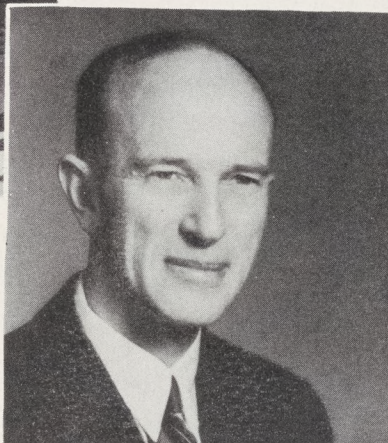
# *Project Administrators*



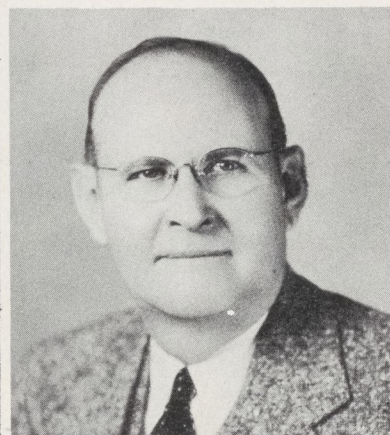
LEROY H. BENNETT  
Project Director



JAMES L. SHELLY  
Acting Assistant Project Director



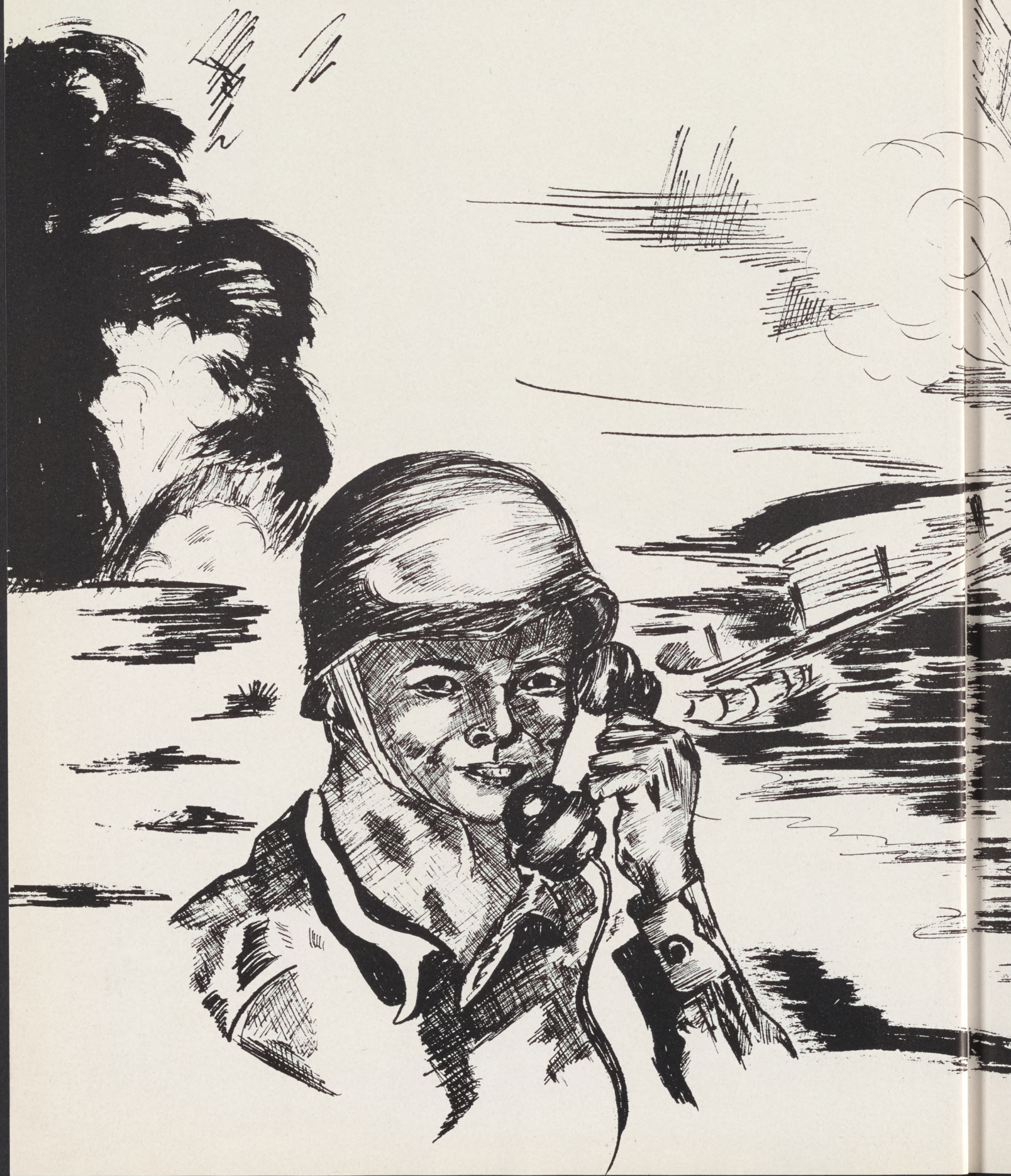
W. C. "TOM" SAWYER  
Supt. of Education



DR. G. P. YOUNG  
Assistant Supt. of Education



# Students









# *Student Body Officers*



KINJI IMADA



Top:  
GEORGE MASAKI

Bottom:  
JOE MORI



# STUDENT BODY OFFICERS—1944-1945

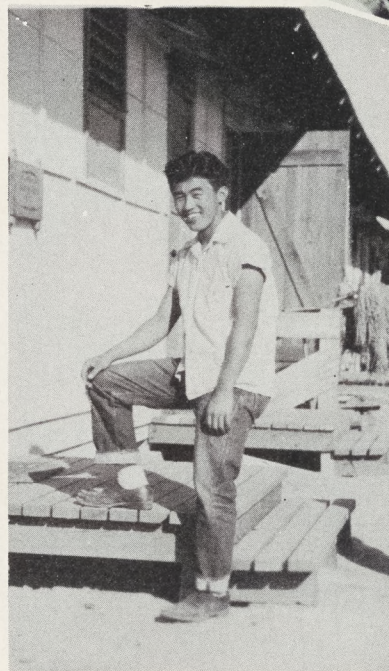
President .....	KINJI IMADA
Vice-President .....	GEORGE MASAKI, JOE MORI
Secretary .....	NELLIE YASUMOTO
Treasurer .....	ALYCE KOUNO
Chairman of Publications.....	GRACE KAWAHARA
Sergeant-at-Arms .....	TAKASHI RYONO
Yell Leader .....	BETTY KAY KOBAYASHI

Left:  
NELLIE YASUMOTO

Right:  
ALYCE KOUNO



GRACE KAWAHARA



TAKASHI RYONO



BETTY KAY KOBAYASHI



# *Student Council*



Standing: Miss Della Taylor, Irvine Yokoyama, Charles Torii, Takashi Ryono, Arthur Segimoto, Seikyou Hanashiro, Ken Asamoto, John Yasumoto, Joe Mori, Kinji Imada, Kaz Hayashi, Mr. Mason Davis, James Otani.

Seated: Betty Kay Kobayashi, Alyce Kouno, Grace Kawahara, Nellie Yasumoto.

The Student Council composed of all student body officers, all class presidents and one representative from each class was the governing body of the Associated Student Body. It had the responsibility of maintaining efficient student organizations.

Into its hands were thrust the approval of budgets of all school organizations, the approval of athletic awards, and the filling of vacancies in student body offices.

During the year this council has sponsored a series of National Assemblies in conjunction with other high schools over the nation. Early in the year it appointed an assembly committee which arranged the assemblies for the year.

Rulings were laid down by the Student Council for awarding grants with the money remaining in the student body fund after the termination of school to aid students toward higher education.

Much credit is due the advisors, Miss Della Taylor and Mr. Mason Davis for the splendid work of the council.



# Seniors



## CLASS OFFICERS

Front Row: Mr. M. Davis, advisor; Kaz Nitasaka, yell leader; Nobuko Toda, secretary; Miss M. Hagan, advisor.

Back Row: Seikyou Hanashiro, class representative; Ken Asamoto, president; Kiyo Ogawa, vice-president; Haruo Hiromoto, treasurer; Hide Fujimoto, yell leader.

After completing four years of high school, the class of '45 is prepared to face the great world of today. Although Senior students will be scattered here and there in the near future, none will forget the sorrows and joys he has had in Canal High School.

Some of the outstanding social events of the year were the Student Body farewell social, Senior assembly, class picnic, Senior Ditch Day, and Senior-Junior Banquet-Prom.

Roy Kuramoto and Michy Yamamoto later filled the vacancies as class representative and treasurer respectively, due to the relocation of former officers.

The Seniors wish to express their deepest appreciation to the advisors, Miss Maxine Hagan and Mr. Mason Davis for making the year a great success.



# Seniors



Jane  
Yukiko  
Adachi

Jean  
Sachiko  
Doi

Robert  
Hamataka

Shogo  
Hikido

Aiko  
Aragaki

Mutsumi  
Egusa

Seikyou  
Hanashiro

Haruo  
Hiromoto

Toshiko  
Arakaki

Hideo  
Fujimoto

Kumiko  
Handa

Kinji  
Imada

Ken  
Asamoto

Mary  
Akiyo  
Fujimoto

May Ann  
Hara

Michiko  
Itomura

Kazuko  
Deguchi

Susie  
Furukawa

Misuye  
Hara

Bernice  
Suyeko  
Kanenaga

Nancy  
Sachiko  
Doi

Kiyo  
Hamaguchi

Shizu  
Hashimoto

Yasuko  
Mary  
Kaneshige



# Seniors



Frank  
Katayama

Grace  
Takayo  
Kawahara

Terumi  
Kawano

Fumiko  
Kawata

Alice  
Setsuko  
Kawauchi

Mary  
Mitsu  
Kido

Betty Kay  
Kobayashi

Bob  
Yoshio  
Koda

Jane F.  
Kodama

Kazuye  
Kotsubo

Alyce K.  
Kouno

Roy  
Kuramoto

Morio L.  
Marubayashi

Susumu  
Matsumoto

Taro  
Matsuura

Hiroshi  
Mizumoto

Joseph  
Mori

Tokiko  
Mori

Setsuko  
Morimasu

Haruko  
Motoishi

Kimi  
Murakami

Hitoshi  
Murata

Matsukiyo  
Murata

Mitsy  
Mitsuko  
Muto



# Seniors



Betty  
Sachiko  
Nakayama

Ann  
Ayano  
Nishina

Kazuye K.  
Nitasaka

Kazuko  
Nojiri

Jean  
Haruka  
Nozumi

Kiyoshi  
Ogawa

Minoru  
Oishi

Yoko  
Okamoto

Toshiko  
Osumi

Tomico  
Otani

Kazuo  
Oto

Takashi  
Ryono

Hiroshi  
Sakata

Florence  
Umeko  
Sakuragi

Mabel  
Matsuko  
Sakuragi

Hisako  
Sasaki

Jane  
Masaye  
Seiji

Eiko  
Evelyn  
Shigaki

Michiko  
Shiine

May K.  
Shimoide

Carole  
Yukiko  
Sugimoto

Kasumi  
Tagawa

Masakazu  
Mack  
Takahashi

Yoshiye  
Takano



# Seniors



Mitzi  
Mitsuko  
Tanaka

Masaki  
Teraoka

Nobuko  
Mary Ann  
Toda

Yoshie  
Dorothy  
Totsubo

Misako  
Tsugawa

Shizuko  
Marvland  
Tsui

Roy  
Tatsuo  
Uda

Billy Lee  
Wakasa

Yasushi  
Waki

Tomiye  
Yabuno

George  
Yaji

Michy  
Marian  
Yamamoto

Takiko  
Martha  
Yasui

Nellie  
Yasumoto

Betty  
Eiko  
Yoshikawa

Jane  
Sadako  
Yoshimi

Ruby  
Yoshimoto

## Seniors without pictures

George Murakami  
Jitsuko Nishioka

Reiro Ogawa  
Ruth Sakamoto

James Yamamoto



# Classrooms





# Juniors



## CLASS OFFICERS

Front Row: Aiko Murayama, yell leader; Sumiko Mizufune, treasurer; Annabelle Fukuzawa, vice-president;; Lillian Tanigawa, secretary.

Back Row: Mr. W. Higgins, advisor; Charles Torii, president; Arthur Segimoto, class representative;; Miss D. Taylor, advisor.

"One more year to go and we'll be Seniors!"—With that in mind, the Juniors started their third year with great interest in various school activities. Early in the term they held a class social to become acquainted with each other.

The highlights of the year were the Junior assembly and Student Body social which the Juniors sponsored in February. One of the most important and memorable events of the year was the Junior-Senior Banquet-Prom held in May.

The kind assistance of Miss Della Taylor and Mr. Warren Higgins enabled the Junior class to pass a very successful year.



# Juniors



Front Row: Annabelle Fukuzawa, Yoshiye Ii, Alice Fujimoto, Marie Hoshino, Lois Hamatake, Miyako Harada, Miyoko Hachiya, Peggy Hirakawa, Setsuko Higake, Grace Hata.  
Back Row: Frank Hoshizaki, Paul Inori, Raita Fujioka, Roy Fukagawa, Masato Fukuda, William Fujimoto, Shigeru Heyano, Jimmy Fujimoto.



Front Row: Nobuko Matsuda, Itsuko Iwamura, Pearl Kumashiro, Alyce Matsumoto, Alice Kodama, Helen Matsuura, Katie Kato, Yoko Matsuda, Midori Kumataka, Yoshiye Matsumoto.  
Back Row: Dick Mayewaki, Kanji Ichiki, Jimmy Kimura, Hide Kadonaga, Kiyo Kato, Harry Kaneko, Lonny Ishihara.



# Juniors



Front Row: Kikuyo Takahashi, Helen Sawai, Sumiko Mizufune, Aiko Murayama, Maude Sakuragi, Haruko Sasaki, Yuriko Seiji, Mary Sugai.

Back Row: Tosh Shimamoto, Bobby Nakamura, George Ohashi, Ted Oto, Paul Morita, Tairi Nishioka, Arthur Segimoto, Toshitaka Sano, Edward Nishi.



Front Row: Fujiko Tara, Fusako Yamamoto, Lillian Tanigawa, Mary Lou Wakasa, Miyo Yamada, Kazuko Watanabe, Ann Tsuruda, Nobue Yuki, Alice Yahanda, Hisako Uchiyama.

Back Row: Charles Torii, Shoji Yamashita, Uki Yoneyama, Masaji Teraoka, Kenny Toyama, Sam Tanaka, Tommy Yamamoto, Ichiro Terasaki, Johnny Yama, Kenny Togami, Wataru Yamamoto.



# Sophomores



Front Row: Miss E. Erwin, advisor; Kazuko Itomura, yell leader; Chizuko Kunioka, secretary; Mr. R. Slate, advisor.

Back Row: Irvine Yokoyama, class representative; Norio Aoki, yell leader; John Yasumoto, president; Yukio Hamada, vice-president; Ken Yamane, treasurer.

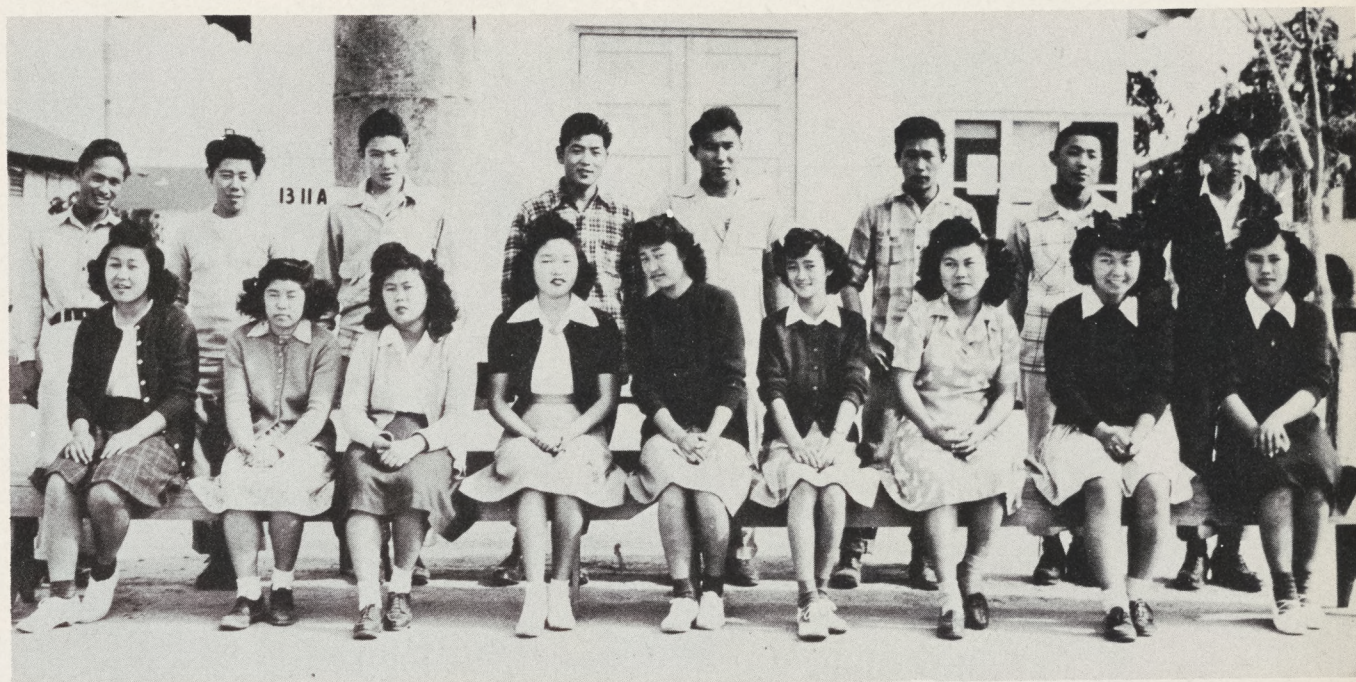
This class, as a result of initiative and much careful planning, has had a very active and successful year. Directed by capable officers, it sponsored one of the most successful booths at the Carnival. Late in the fall a very enjoyable assembly was presented to the student body. A few socials proved to satisfy its social ambitions.

Its class officers were: president, John Yasumoto; vice-president, Yukio Hamada; secretary, Chizuko Kunioka; treasurer, Ken Yamane; representative, Irvine Yokoyama; and yell leaders, Kazuko Itomura and Norio Aoki.

Much credit for the successful year is due to the two class advisors, Miss Elizabeth Erwin and Mr. Robert Slate.



# Sophomores



Front Row: Lilly Hagihara, Setsuko Ichimoto, Hideko Hara, Rose Hiromoto, Louise Ide, June Hamada, Haruko Arakaki, Doris Gamow, Nadine Fukagawa.

Back Row: Tosh Hiratsuka, Norio Aoki, Howard Hamaguchi, Kenso Araki, George Fujioka, Masashi Hamashita, Isamu Adachi, Yukio Hamada.



Front Row: Kazuko Itomura, Chizuko Kunioka, Jean Kato, Day Miyahara, Mary Ishimine, Tomie Izuno, Rose Kaneshige, Yoshiko Kuramoto, Cherry Morita, Mary Kishimoto.

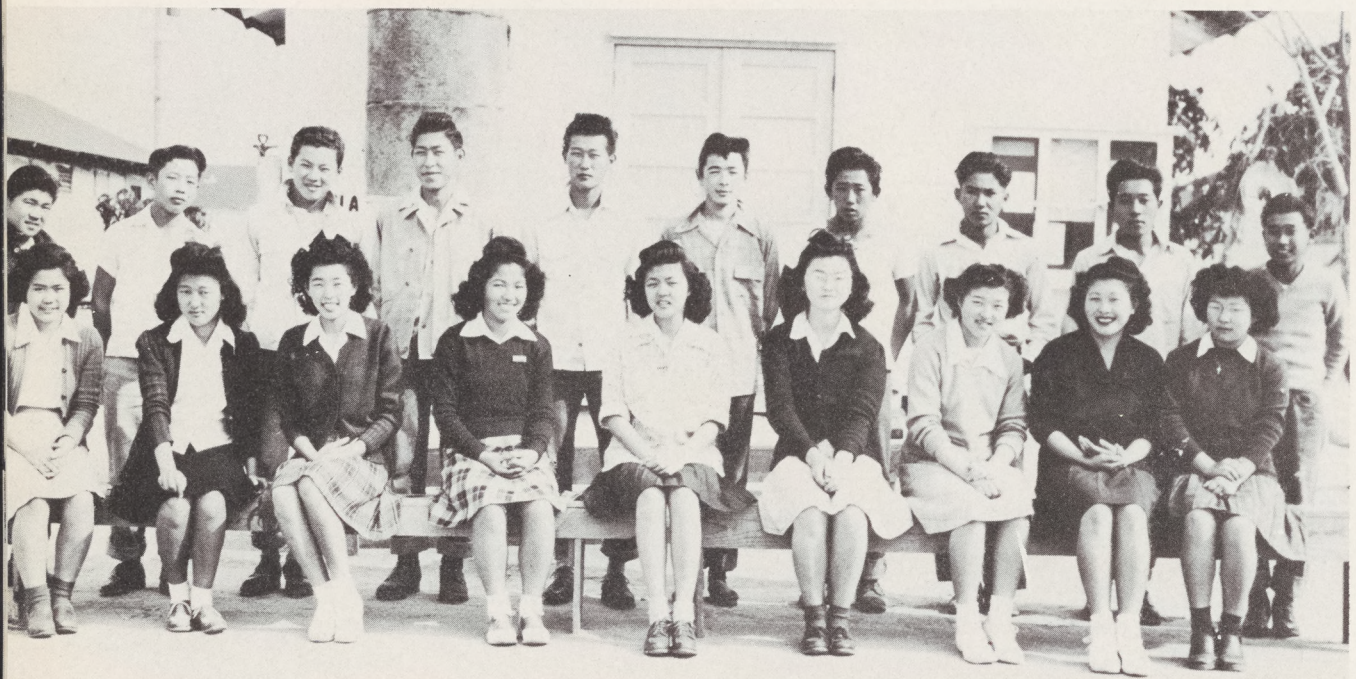
Back Row: George Katayama, Frank Matsuoka, George Miyasaki, John Kimoto, Thomas Miyai, Ben Mitsuyoshi, Sam Kuramoto, Tom Kishimoto, Akira Kobata.



# Sophomores



Front Row: Dorothy Nagata, Misao Takata, Lilly Nagata, Kimiko Sasa, Akiko Nakata, Corrine Nishimura, Chizuko Okamoto, Bessie Nakamura, May Nakata, Atsuko Murata.  
Back Row: Tom Tagawa, Seichi Tanisawa, Shig Murakami, Sho Nakata, William Seiji, Henry Shigaki.



Front Row: Mary Yamamoto, Peggy Yasui, Aiko Yamada, Sumiko Yamashita, Ruby Takayama, Rose Uda, Polly Togami, Miyoko Yoshihara, Patricia Yoshikawa.  
Back Row: Suyenori Yamada, Ken Yamane, Alfred Yahanda, John Yasumoto, Tony Yamada, Minoru Yoshimura, Jon Nakatani, Mitsuaki Yoshimoto, Yukiaki Takeda, Irvine Yokoyama.



# Freshmen



## CLASS OFFICERS

Front Row: Frances Seiji, yell leader; Mae Fukuzawa, treasurer; Mary Yamamoto, secretary.  
Back Row: Mr. L. N. George, advisor; Kaz Hayashi, class representative; Harry Nishimura, yell leader; Dwight Kawahara, vice-president; Jimmy Otani, president; Miss C. Lancaster, advisor.

The small but mighty Freshmen entered Canal High School with great courage and enjoyed a successful year. They first organized themselves by electing their class officers. They held a "get-together" social for the purpose of getting acquainted.

One of the highlights of the year was the Freshman assembly. The "Freshies" also sponsored a successful Student Body social this spring. The members of this class will be remembered for their superb participation in various organizations.

Much credit for a successful year is due to the Freshman advisors, Miss Cecile Lancaster and Mr. Leslie George.



# Freshmen



Front Row; Judy Harada, Edith Doi, Mary Furukawa, Mae Gojobori, May Fujimoto, Mae Fukuzawa, Mae Bungo, Fusako Hachiya, Betty Hara, Norma Hamatake.

Back Row: Jimmy Akioka, Tom Fujimoto, Kiyoshi Goto, James Adachi, Sammy Akioka, Louis Fujikawa, Kaz Hayashi.



Front Row: Noriko Itogawa, Hanaye Hirose, Sakaye Kamegawa, Evelyn Kawahara, Grace Inori, Tatsuyo Hatanaka, Marie Kitajima, Patsy Hoshino, Betty Hirano.

Back Row: Shoichi Inouye, Calvin Inori, Eddie Kanenaga, Katsuji Kobata, Jack Kido, Henry Kato, Masato Kawata, Dwight Kawahara, Thomas Imura.



# Freshmen



Front Row: Chiyoko Nakamoto, Tamotsu Nishioka, Jimmy Otani, Bob Oto, James Nishi, Harry Nishimura, Matsuye Osaki.

Back Row: Lily Mori, Jean Nakatani, Molly Koda, Miye Matsumoto, Mariko Mitsuyoshi, Eiko Murayama, Miyoko Kozuki, Toshiko Sasa.



Front Row: Emiko Shimoide, Mary Yamamoto, Barbara Yoshimi, Frances Seiji, Miyeko Terada, Michiyo Takeda, Chiyoko Yamamoto.

Back Row: Susumu Seiki, Yutaka Tanaka, Fred Seiji, George Yoshihara, Taro Terashi, Yukio Tsuji, Akira Yamamura, Joh Sekiguchi, George Terasaki, Frank Toyama.



# *Eighth Grade*



1st Row: Hisako Hara, Lillie Ishimine, Peggy Kadonaga, Marie Hata, June Harada, Marion Yoshimi, Betty Yahanda, Mitzi Mizufune, June Hoshiko, Nancy Morikawa.

2nd Row: Phyllis Iwasaki, Tachi Hamai, Hiro Mukaye, Hisashi Matsuda, George Nagata, George Nakatani, Elmer Kobayashi, Dick Kishimoto, Roy Nakatani, George Harada, Frank Sawai, Susie Hiromoto, Miss Karns.

3rd Row: June Miyai, Takao Fukuchi, Jimmy Ryono, Jimmy Yonemoto, Roy Wakida, Masami Yamamoto, Takeshi Saigo, Frank Isozaki, Ken Yasui, Fujie Fujimoto.



1st Row: Kay Mori, Grace Shigaki, Shiyeko Murata, Fusako Tanaka, Sally Kido, Gladys Takemori, Keiko Mataga, Kiyoko Takata, Eiko Adachi, Yaeko Nakatani, Rose Kodama, Bessie Nishi.

2nd Row: Frank Yamamoto, Kazumi Yoneyama, Toshiaki Yoshimura, George Inouye, Raymond Nagata, Kiyoshi Komoto, Benny Tanaka, George Ogata, Hitoshi Tsukuda, Akira Ichihana, Hajime Hamada, Fred Takikawa, Mr. Cansler.

3rd Row: Takashi Shimizu, Shigeru Ohara, Roy Kawagoe, Eddie Jio, Robert Fukuda, Tadashi Butsumiyo, Yoshio Nakatani, Mikio Nakano, Chiogi Tanisawa, Yukio Hisaoka.



# Seventh Grade



Left to right:

First Row: Kikuko Fujimoto, Sueko Nishimoto, Katsuko Yoneyama, Tamaro Yamamoto, Grace Bungo, Tomiko Takeda, Kikuko Yamada, Marion Ichimoto, Teiko Terashi, May Yagi, Junko Tanaka, Jessie Matsumoto, Joyce Kato.

Second Row: Miss Sheaffer, Emi Kato, Rebecca Nozumi, Dorothy Fujimoto, Betty Kishi, Midori Kuramoto, Tsukiye Yoshimoto, Kanoko Yoshimura, Yasuko Hatanaka, Yoshio Hisaoka, Toshio Seiji, Mary Sugai.

Third Row: Susumu Komoto, Harry Yasumoto, Khan Tsuchiguchi, Edwin Ezaki, David Hamaguchi, William Watahira, Harry Kawagoe, Tommy Sano, Takashi Kanenaga, Akira Shirai, John Sakamoto, Tommy Kumashiro, Hiro Tanaka.



First Row: Ann McVey, Michiko Okada, Lily Sano, Sumiko Okada, Mariko Akazaki, Satoyo Nakatani, Yoshiye Okino, Fumiko Yamamoto, Florence Inori, Saeko Tsukuda, Mae Kobata, Alice Nozumi.

Second Row: Francis Fujihara, Thomas Ishimine, Masayuki Ohashi, Takashi Hachiya, Clarence Aoki, Benny Katayama, Katsumi Yamane, Toshimi Kurisu, Mike Yoshimoto, Shinji Matsumoto, Takenori Murakami, Michi Takahashi, Mrs. Rennick.

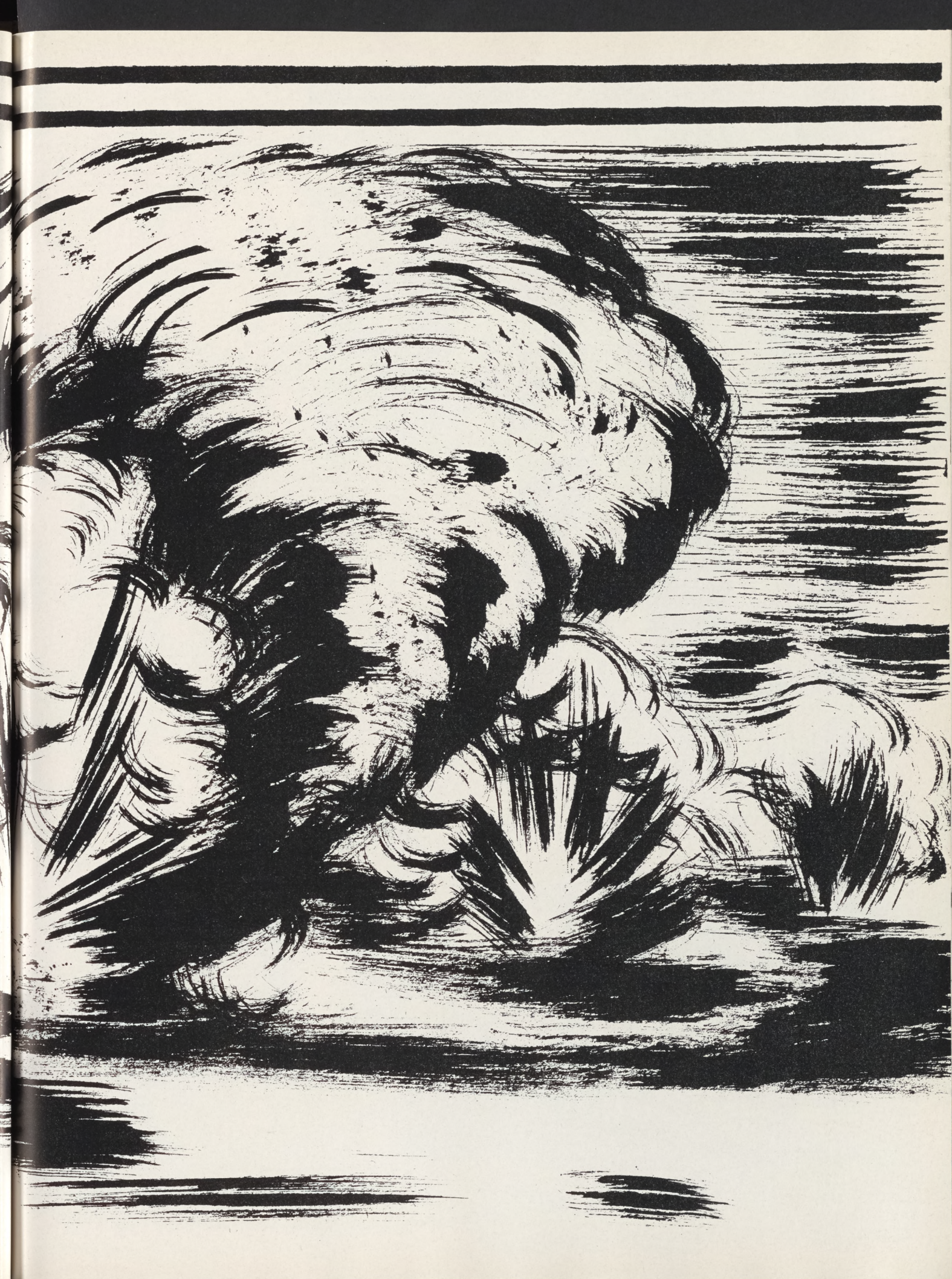
Third Row: Sam Hara, Kiyoshi Hanashiro, Jim Fujioka, Noboru Yamanaka, Satoru Teroaka, Alpine Matsumoto, Ray Itogawa, Kenneth Li, Leo Tagawa, Kazuyuki Terada.



# Activities

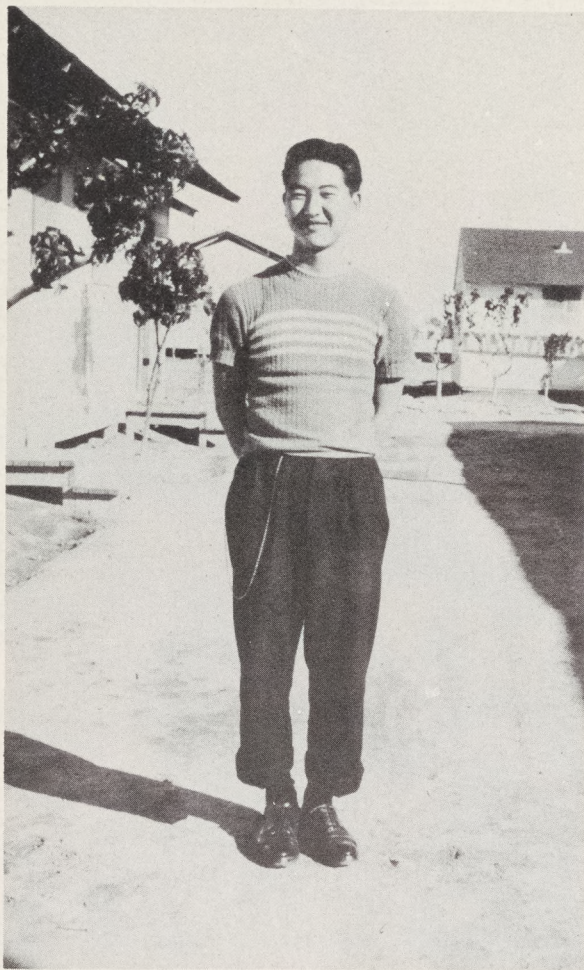








# Rivulet



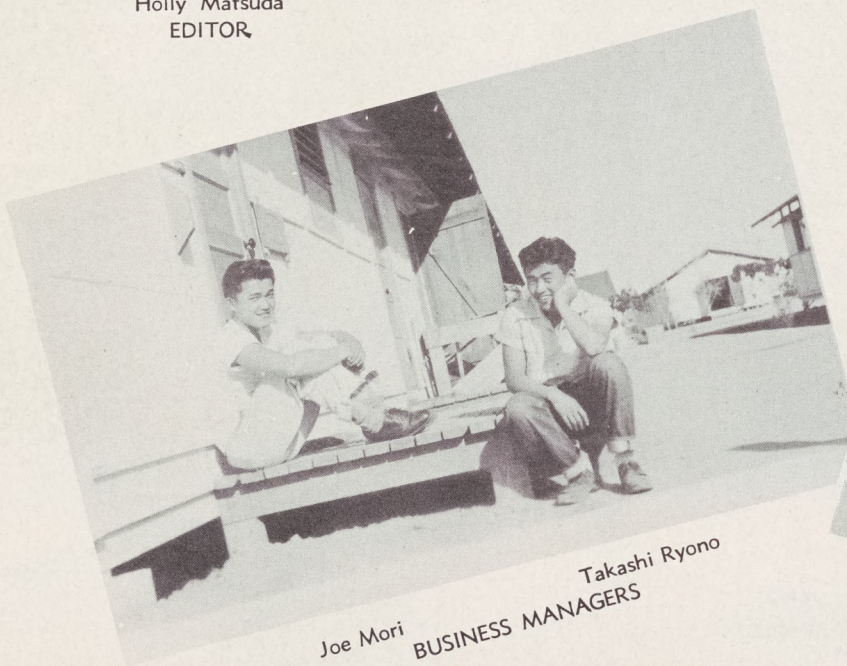
Holly Matsuda  
EDITOR

With "Enter to learn, go forth to serve" as the motto for the annual, this year's Rivulet staff of Canal High School has worked very hard to make a successful annual.

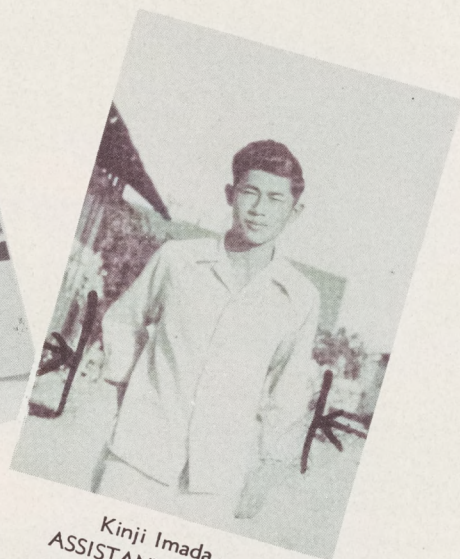
The staff sponsored a "Bingo" booth at the Carnival to help finance the annual.

Much credit goes to Mr. J. P. McVey, our principal, for spending his valuable time taking the pictures. Many hours of hard work on the annual were also contributed by the advisors, Miss Maxine Hagan, Miss Della Taylor, and Mr. Warren Higgins.

The annual staff of Canal High School greatly appreciates the great help given by all those who have worked very hard to make the annual "Rivulet" a success.



Joe Mori  
Takashi Ryono  
BUSINESS MANAGERS



Kinji Imada  
ASSISTANT EDITOR





### ANNUAL STAFF

First Row: H. Hiromoto, J. Mori, K. Imada, T. Ryono, G. Fujioka.

Second Row: Mr. W. Higgins, Y. Okamoto, G. Kawahara, M. Yamamoto, Miss M. Hagan, Y. Takano, N. Yasumoto, H. Sasaki, Miss D. Taylor.

Third Row: M. Ishimine, P. Yasui, R. Kaneshige, M. Egusa, L. Tanigawa, A. Kouno, B. Kobayashi. Not pictured, Reiro Ogawa, Michiko Itomura.

### SALES STAFF

First Row: A. Kawauchi, M. L. Wakasa, K. Kotsubo, B. K. Kobayashi, K. Sasa, K. Itomura.

Second Row: E. Murayama, R. Hiromoto, C. Kunioka, T. Otani, M. Fujimoto, M. Shiine, M. Yoshihara, A. Murayama. (not pictured) Annabelle Fukuzawa, Jane Kodama, Pearl Kumashiro, Lilly Nagata.





# Hi-Tide



Yoko Okamoto  
EDITOR

The Hi-Tide in its third year of existence has served its purpose as the students' newspaper. The publication was continued during the summer of 1944, at which time it became a weekly issue instead of a semi-monthly. The journalism class under its capable advisor, Miss Maxine Hagan, has strived diligently to make the paper efficient and informative.

First Row: G. Kawahara, K. Kotsubo, J. Yama, K. Imada, U. Yoneyama, H. Sasaki.

Second Row: H. Matsuura, M. Egusa, C. Kunioka, K. Deguchi, Miss Maxine Hagan, M. Yamamoto, L. Tanigawa, A. Kouno, N. Yasumoto, M. Kumataka.





# FALL 1944

# STAFF

# SPRING 1945

Miss Hagan .....ADVISOR  
 Grace Kawahara .....Director of Publication  
 Yoko Okamoto .....Editor  
 Yosh Takano .....Assistant Editor.....Jitsuko Nishioka  
 Hisako Sasaki .....Make-up Editors  
 Michy Yamamoto  
 Helen Matsuura .....News Editor  
 Midori Kumataka .....Assistant  
 Kazuko Deguchi .....Editorial Page Editor.....Sumiko Mizufune  
 Nellie Yasumoto .....Feature Page Editor  
 Kazuye Kotsubo .....Assistant  
 Lillian Tanigawa .....Girl's Sports.....Mutsumi Egusa  
 Kinji Imada .....Boys' Sports.....Roy Kuramoto  
 Midori Kumataka .....Art Editor.....Chizuko Kunioka  
 Alyce Kouno .....Exchange Editor  
 Johnny Yama .....Circulation Managers  
 Uki Yoneyama  
 Journalism Class.....Reporters



Top:  
Yoshiye Takano

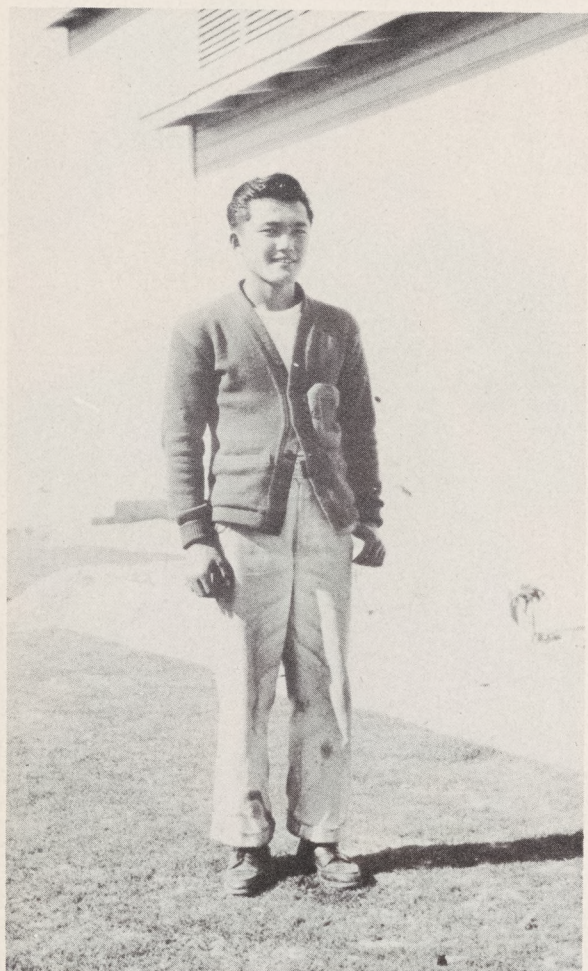
Bottom:  
Jitsuko Nishioka

First Row: A. Fujimoto, L. Ide, S. Mizufune, H. Uchiyama, N. Matsuda, Y. Seiji.  
 Second Row: B. Yoshikawa, R. Hiromoto, C. Okamoto, M. Shiine, M. Yoshihara, B. Nakamura,  
 G. Hata, J. Nishioka.  
 Third Row: B. K. Kobayashi, M. Fujimoto, R. Kuramoto, H. Kadonaga, R. Fukagawa, K. Asa-  
 moto, M. Sugai, Y. Totsubo.





# Bear Trails

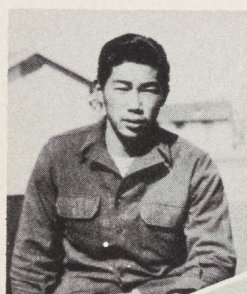


Joe Mori  
EDITOR

Thinking of an easy way for the incoming Freshman Class and the Jerome students to get acquainted with Canal High School, a staff headed by Joe Mori was organized to publish a second issue of the handbook, the "Bear Trails."

This handbook contains the history of Canal High from that hot, sultry day on October 12, 1942 up to the present time. A tentative school calendar, general information, the school constitution, an outline of subjects, organizations, school yells and songs, a faculty directory, and a student directory containing the names of every student in high school were printed in this handbook.

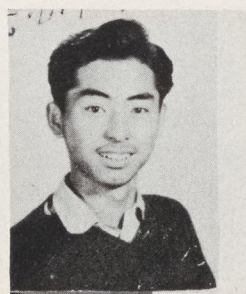
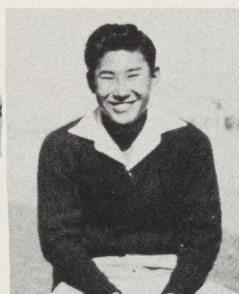
The student body of Canal High is proud to say that most of the new students have had little difficulty in finding their way around the high school campus with the great help of the "Bear Trails."



## STAFF

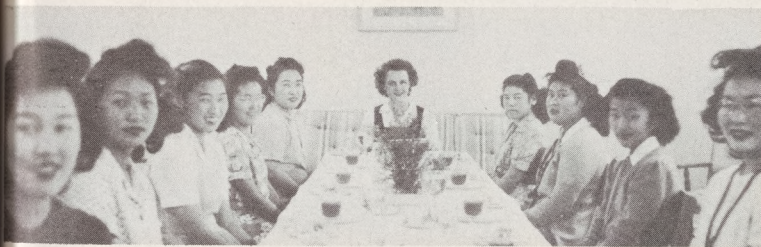
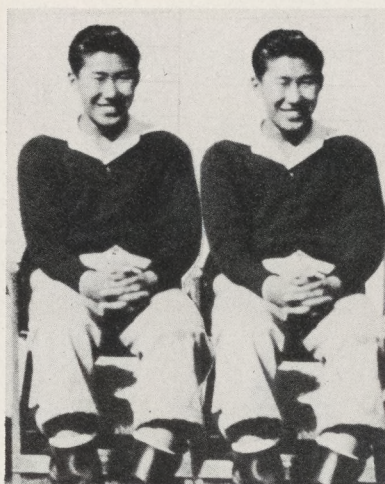
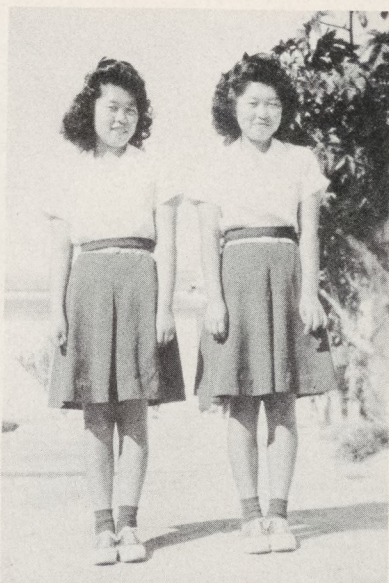
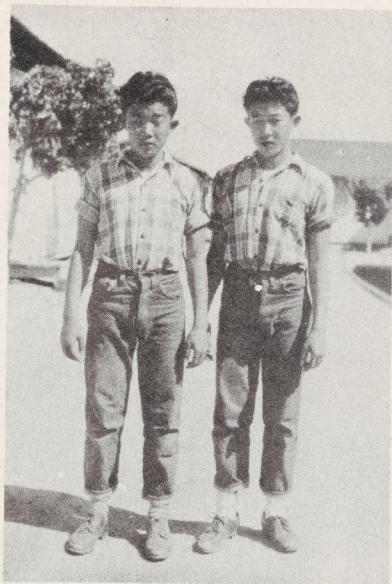
EDITOR .....	Joe Mori
BUSINESS MANAGER .....	Ken Asamoto
LITERARY EDITORS .....	Mutsumi Egusa, Takeo Nishihara
MAKE-UP EDITORS .....	Takako Uchiyama, Teruye Hata
ART EDITOR .....	Hideo Kadonaga

Left to right: H. Kadonaga, M. Egusa, K. Asamoto, T. Nishihara, T. Uchiyama, T. Hata.





# *Snapshots*





# Music



GIRLS' GLEE

Through the efforts of Mr. Jarville Rennick, the new conductor from the closed Jerome Relocation Center, the Canal High School band and orchestra have gained camp-wide praise for the great improvement shown during the year.

Both organizations have appeared in public in Canal and Butte. They have rendered service at PTA meetings, the Father and Son banquet, the Junior and Senior plays, assemblies, inductees' sendoff programs, commencement exercises and other school activities. At an orchestra concert presented in Butte before the superintendents and teachers of various schools of Arizona, several talented players participated successfully.

With the purchase of band caps financed by the Student Body fund, the combined Canal and Butte band made their initial appearance at the community DSC Presentation Program.

Assisting Mr. Rennick were Mr. Matsumoto, noted flutist, and Mr. Yagura, noted violinist, who have worked with the band and orchestra groups respectively.

The splendid work accomplished by the Girls' Glee Club may be credited to their instructor Miss Mary Mark. Highlighting the year's activities was the Oratorio "The Messiah" presented to the public on December 21, 1944. The girls were dressed in white robes in contrast to the black ones worn by the two soloists, Karen Hirasuna and Mari Oino.



BAND



Right:

Majorettes

Mary Yamamoto  
Nadine Fukagawa  
Akiko Nakata



Left below:

Orchestra

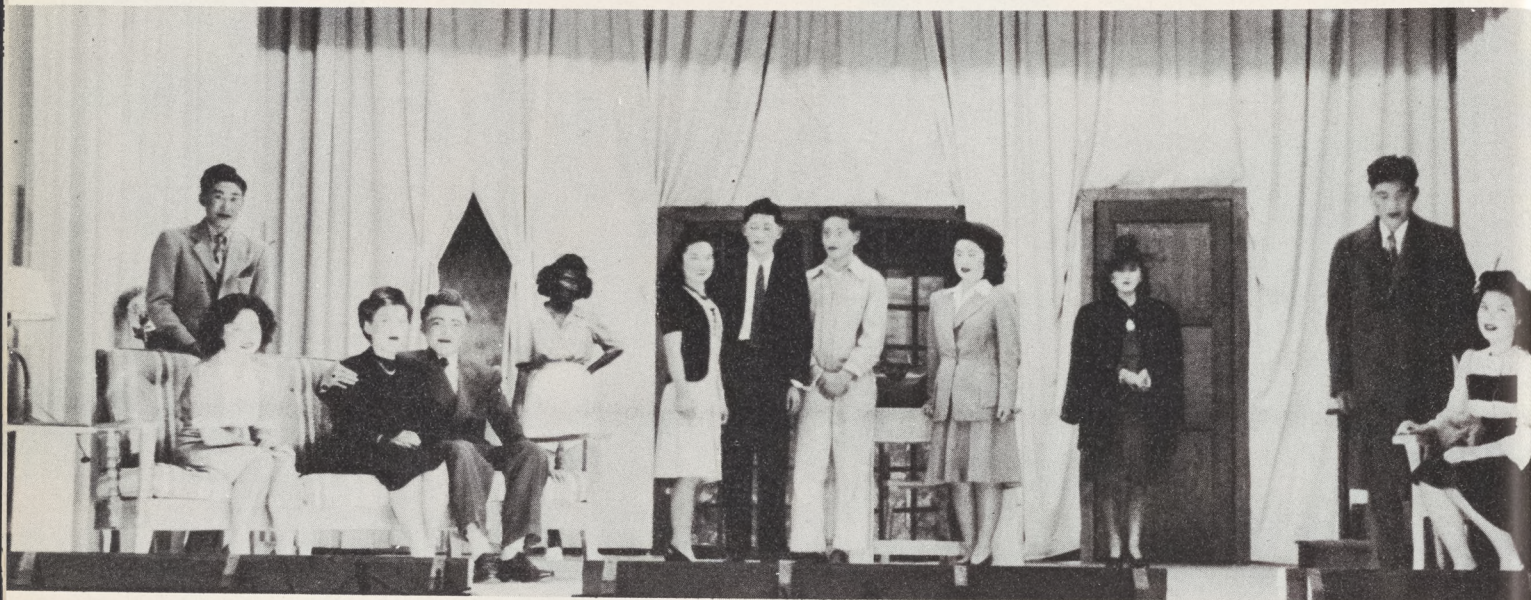
Right below:

Clarinet Section





# The Merry Death

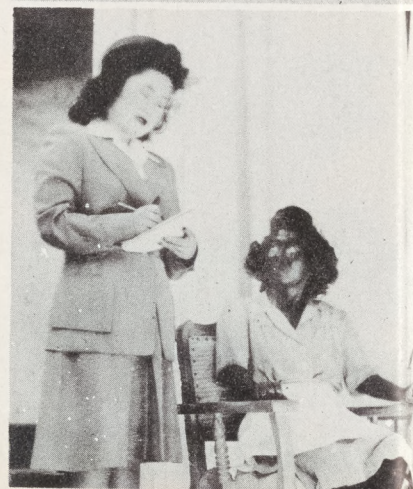


Left to right: K. Asamoto, M. Itomura, M. Egusa, J. Mori, Y. Totsubo, B. K. Kobayashi, K. Imada, S. Hikido, R. Sakamoto, Y. Takano, M. Teraoka, M. Yamamoto.

The traditional senior play was presented at the Canal High School Auditorium on January 6, 1945. The play entitled "The Merry Death" was a hilarious comedy presented in three acts.

Briefly told, it is about Judge Elmo Taggert's flight from a notorious criminal Jim the Dandy, who had escaped from prison. Since Judge Taggert had sentenced Jim to life imprisonment, he was trying to get vengeance on the judge. In his hasty departure Judge Taggert forgot to notify his family. Before Ethel Hopper, Judge Taggert's private secretary who had assisted him in his escape, could acquaint Mrs. Taggert with the real reason for her husband's hasty exit, Earnest Taggert, the Judge's twin brother appeared upon the scene. A ridiculous situation was brought about when Mrs. Taggert mistook Earnest Taggert for her husband. While Earnest was visiting his sweetheart came seeking him and unfortunately fell into the mistaken Judge's hands.

However, all turned out well and Jim the Dandy was captured and once again imprisoned. The members of the cast were Mutsumi Egusa, Joe Mori, Michive Yamamoto, Michiko Itomura, Betty Kay Kobayashi, Ruth Sakamoto, Yoshive Totsubo, Ken Asamoto, Kinji Imada, Yoshiye Takano, Masaki Teraoka and Shogo Hikido. The play was directed by Miss Maxine Hagan who was assisted by Roy Kuramoto.





*Speed*

"Speed," a comedy of three acts, was presented by the Junior Class on November 4, 1944.

The entire action of the play took place in the lobby of "Barge Inn," a summer resort hotel in the Catskill mountains. Rollo Jones, who came for a visit to this resort, was mistaken for a great athlete. Enid Lambert, the proprietor's daughter, noticed him at once. As an athletic contest was being sponsored, Rollo Jones was forced to participate because of his mistaken identity. However, Rollo was unable to run fifty yards when practicing. This presented quite a situation. Slim Jones, who was in love with Enid, had quite a rival in Rollo Jones, but finally yielded to him when Rollo by a miracle was able to win the contest which he had entered.

The cast included: Ann Tsuruda, Katie Kato, Kiyoshi Kato, Lilian Tanigawa, Charles Torii, Annabelle Fukuzawa, Nobue Yuke, Johnny Yama, Helen Matsura, Jimmy Fujimoto. Miss Maxine Hagan was the director.



Left to right: J. Yama, N. Yuki, H. Matsuura, J. Fujimoto, A. Tsuruda, K. Kato, L. Tanigawa, K. Kato.





# == Organizations ==









# National Honor Society



First Row: Arthur Segimoto, Charles Torii, Kinji Imada, Joe Mori, Roy Kuramoto.

Second Row: Miss Cecile Lancaster, Hisako Sasaki, Grace Kawahara, Michy Yamamoto, Helen Matsuura, Alyce Kouno, Betty Kay Kobayashi, Maryland Tsuji, Alice Fujimoto, Miss Maxine Hagan.

Third Row: Midori Kumataka, Nellie Yasumoto, Lillian Tanigawa, Kazuko Deguchi, Mary Fujimoto, Yoko Okamoto, Sumiko Mizufune, Miss Mabel Vodak.

Not Pictured: Annabelle Fukazawa, Eiko Shigaki.

Those "Brainies" that received highest grades in classrooms and led the school affairs took time out from school books to hold a social, a formal initiation, and above all to sponsor the "March of Dimes" to raise funds for the conquest of poliomyelitis.

## Fall 1944

## Officers

## Spring 1945

Joe Mori .....	President .....	Roy Kuramoto
Alyce Kouno .....	Vice-President .....	Michy Yamamoto
Michy Yamamoto .....	Secretary-Treasurer .....	Alyce Kouno



# Quill & Scroll



First Row: Joe Mori, Kinji Imada, Miss Maxine Hagan, Takashi Ryono, Haruo Hiromoto.  
 Second Row: Hisako Sasaki, Grace Kawahara, Kazuko Deguchi, Mutsumi Egusa, Yoshiye Takano, Michy Yamamoto, Carole Sugimoto, Fujiko Tara, Nellie Yasumoto.  
 Third Row: Hisako Uchiyama, Alice Fujimoto, Sumiko Mizufune, Alyce Kouno, Nobuko Toda, Tomico Otani, Helen Matsuura, Lillian Tanigawa, Midori Kumataka, Grace Hata.

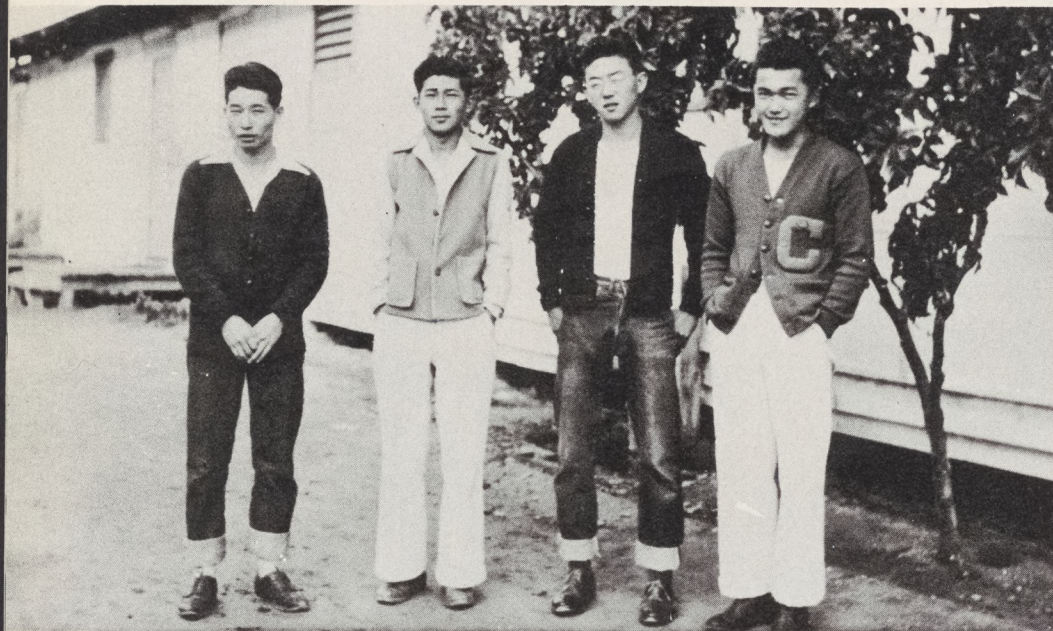
In the early part of our school year, eleven old members resumed their Quill and Scroll activities. This year, eighteen new members were accepted by the Quill and Scroll International Honorary Society. The members were selected on the basis of scholarship and journalistic achievement.

Canal High School has had three journalistic productions this year, the Hi-Tide, a newspaper, the Rivulet, the annual, and the Bear Trails, a hand-book published for the aid of new students.

Fall 1944	Officers	Spring 1945
Joe Mori .....	President .....	Haruo Hiromoto
Kinji Imada .....	Vice-President .....	Nellie Yasumoto
Yoshiye Takano .....	Secretary .....	Sumiko Mizufune
Lillian Tanigawa .....	Treasurer .....	Midori Kumataka



# N.A.S.S.



Left to right: F. Katayama, K. Imada, K. Ogawa, J. Mori.

## NATIONAL ATHLETIC SCHOLARSHIP SOCIETY

Advisor  
Mr. Davis

Kiyo Ogawa .....Pres.

Joe Mori .....V. Pres.

Frank Katayama .....Sec.-Treas.

# Blue Triangles

## JUNIOR GIRL RESERVES

Advisor  
Mrs. Kobayashi

Yuriko Seiji .....Pres.

Aiko Murayama .....V. Pres.

Peggy Hirakawa .....Sec.-Treas.

Sumiko Mizufune .....Corr. Sec.



First Row: Y. Masumoto, K. Kato, M. Harada, S. Mizufune, P. Hirakawa, Y. Matsuda, M. Yamada, M. Hoshino, A. Fujimoto, Y. Ii.

Second Row: Miss Hayashi, Y. Seiji, M. Kumataka, M. Sakuragi, A. Murayama, M. Hachiya, L. Hamatake, N. Matsuda, A. Yahanda, N. Yuki, Mrs. Kobayashi.



# Freshmen G.R.

Advisor

Mrs. Peddy

Mary Yamamoto .....Pres.

Mae Bungo .....V. Pres.

Mae Fukuzawa .....Sec.

Norma Hamatake .....Treas.



First Row: J. Nakatani, S. Kamegawa, F. Seiji, C. Nakamoto, T. Sasa, H. Hirose, B. Hara, L. Mori.

Second Row: N. Itogawa, M. Gojobori, M. Furukawa, E. Kawahara, B. Yoshimi, M. Fukuzawa, M. Kitajima, M. Terada, M. Osaki, F. Hachiya, P. Hoshino, I. Harada, N. Hamatake.

Third Row: E. Shimoide, M. Terada, M. Koda, E. Murayama, M. Fujimoto, M. Kozuki, Mrs L. Peddy, M. Bungo, M. Mitsuyoshi, B. Hirano, M. Matsumoto, M. Yamamoto.

# F.F.A.



## FUTURE FARMERS OF AMERICA

Advisor

Mr. George

Shig Heyano .....Pres.

Akira Kobata .....V. Pres.

Hiro Hirabayashi .....Sec.

George Fujioka .....Treas.

Robert Hamataka .....Reporter

First Row: W. Fujimoto, G. Fujioka, R. Hamataka, K. Togami, Mr. George, S. Heyano, A. Kobata.

Second Row: T. Miyai, F. Katayama, R. Kuramoto, B. Wakasa, M. Teraoka, B. Nakamura, G. Ohashi, T. Shimamoto, T. Matsuura.



# Music Appreciation Club



First Row: E. Doi, C. Okamoto, B. Yoshikawa, Miss Mark, M. Yamada, J. Seiji.  
Second Row: H. Arakaki, N. Doi, S. Hashimoto, K. Hamaguchi, R. Yano, L. Ide, C. Morita, Y. Matsuda, R. Kaneshige, I. Iwamura, H. Hirose.

Advisor

Miss Mark

Fall 1944

Ruth Sakamoto ..... Pres.  
Betty Yoshikawa ..... V. Pres.  
Chizuko Okamoto ..... Sec.  
Miyo Yamada ..... Treas.

Spring 1945

Toshy Arakaki ..... Pres.  
Jane Seiji ..... V. Pres.  
Yoko Matsuda ..... Sec.  
Chimiye Morita ..... Treas.

# Order of Business Efficiency

## BOOKKEEPING CLUB

Miss Taylor

Advisor

Tak Ryono ..... Pres.  
Lillian Tanigawa ..... V. Pres.  
Grace Kawahara ..... Sec.  
Fusako Yamamoto ..... Treas.



First Row: S. Yamashita, U. Yoneyama, H. Hiromoto, T. Ryono, T. Nishioka.  
Second Row: M. A. Hara, P. Hirakawa, M. Hachiya, J. Adachi, N. Toda, J. Yoshimi, M. Muto, Y. Takano, F. Yamamoto, F. Tara, G. Kawahara, Miss Della Taylor.  
Third Row: H. Sasaki, Y. Masumoto, M. Sakuragi, P. Kumashiro, L. Tanigawa, A. Matsumoto, M. L. Wakasa, A. Fujimoto.



# Publication Art Club

Advisor  
Mr. Slate

Mitsy Muto ..... Pres.  
Jimmy Akioka ..... V. Pres.  
Misako Tsugawa ..... Sec.  
Rose Yano ..... Treas.  
Mary Ishimine ..... Awards Chm.  
Harry Nishimura ..... Sgt. at Arms



Front Row: R. Kaneshige, J. Akioka, H. Kato, H. Nishimura, M. Muto.  
Back Row: M. Gojobori, M. Kozuki, M. Fukuzawa, M. Fujimoto, R. Yano, C. Kunioka, P. Yasui,  
M. Ishimine, M. Tsugawa. (Not pictured) Mr. Slate.

# Science Club



Advisors  
Mr. Davis, Mr. Onoda

Kazuko Deguchi ..... Pres.  
Kinji Imada ..... Research Chm.  
Nobuko Toda ..... Sec.  
Yoko Okamoto ..... Pub. Chm.

First Row: J. Mori, K. Asamoto, K. Deguchi, J. Fujimoto, T. Kishimoto, L. Ishihara.

Second Row: Mr. Onoda, H. Uchiyama, T. Arakaki, Y. Okamoto, M. Kumataka, A. Kawauchi,  
M. Fujimoto, M. Egusa, T. Otani, H. Matsuura, S. Mizufune, L. Tanigawa, J. Nishioka,  
N. Toda, Mr. Davis.

Third Row: C. Torii, S. Heyano, I. Terasaki, K. Togami, A. Segimoto, R. Fujjioka, K. Imada,  
S. Hikido, T. Sano, R. Kuramoto, H. Hiromoto, I. Yokoyama.



# High Hats



## SOPHOMORE GIRL RESERVES

Advisor  
Mrs. Peddy

Yoshiko Kuramoto .....Pres.  
Dorothy Nagata .....V. Pres.  
Akiko Nakata .....Sec.  
Mary Ishimine .....Pub. Chm.

First Row: K. Itomura, R. Uda, H. Arakaki, L. Ide, M. Ishimine, P. Yasui, D. Nagata.  
Second Row: P. Yoshikawa, M. Yoshihara, P. Togami, Y. Kuramoto, M. Nakata, C. Okamoto, C. Nishimura, J. Hamada, R. Hiromoto, C. Kunioka.  
Third Row: Miss Okuno, M. Yamamoto, J. Kato, K. Sasa, L. Hagihara, R. Takayama, A. Nakata, N. Fukagawa, D. Gamow, A. Yamada, M. Takata, B. Nakamura, T. Izuno, Miss Hayashi.

# Los Pan Americanos

## SPANISH CLUB

Advisors  
Miss Mark, Miss Shimizu

Jimmy Fujimoto .....Pres.  
Arthur Segimoto .....V. Pres.  
Haruo Jio .....Sec.  
Toshitaka Sano .....Treas.



First Row: J. Fujimoto, H. Hiromoto, T. Sano, J. Yama, U. Yoneyama, K. Asamoto, A. Segimoto.  
Second Row: D. Mayewaki, L. Ishihara, R. Kuramoto, K. Toyama, M. Fujimoto, Miss Mary Mark, A. Tsuruda, K. Deguchi, H. Jio, H. Kaneko.  
Third Row: H. Uchiyama, M. Kumataka, A. Yahanda, H. Matsumura, S. Mizufune, T. Otani, Y. Okamoto, K. Nojiri.



# Tri-C

## COMMERCIAL CLUB

### Advisors

Miss Taylor, Miss Tanaka

Nellie Yasumoto .....Pres.

Kaz Kotsubo .....V. Pres.

Hisako Sasaki .....Sec.

Lillian Tanigawa .....Treas.



First Row: J. Adachi, M. Shiine, G. Kawahara, B. K. Kobayashi, L. Tanigawa, K. Kotsubo, Miss Della Taylor, Miss Helen Tanaka, N. Yasumoto, H. Sasaki, A. Kouno, M. Egusa, Y. Takano, M. A. Hara.

Second Row: C. Nishimura, M. Harada, A. Murayama, K. Takahashi, R. Hiromoto, K. Watanabe, L. Ide, A. Nakata, R. Yano, M. Muto, R. Uda, I. Iwamura, D. Miyahara, M. Yamamoto, S. Hashimoto, P. Hirakawa, D. Gamow, F. Tara, F. Yamamoto, S. Yamashita.

Third Row: P. Yoshikawa, K. Itomura, Y. Matsumoto, A. Matsumoto, K. Kato, P. Kumashiro, M. Yamada, M. Sakuragi, M. Harada, Y. Kuramoto, J. Hamada, J. Seiji, M. Takata, M. L. Wakasa, A. Fujimoto, H. Arakaki.

# Tri-Y

## SENIOR GIRL RESERVES

### Advisor

Mrs. May

Michy Yamamoto .....Pres.

Mary Fujimoto .....V. Pres.

Nancy Doi .....Sec.

Misako Tsugawa .....Treas.

Mutsumi Egusa .....Pgm. Chm.

May Shimoide .....Pub. Chm.

Hisako Sasaki .....Corr. Sec.

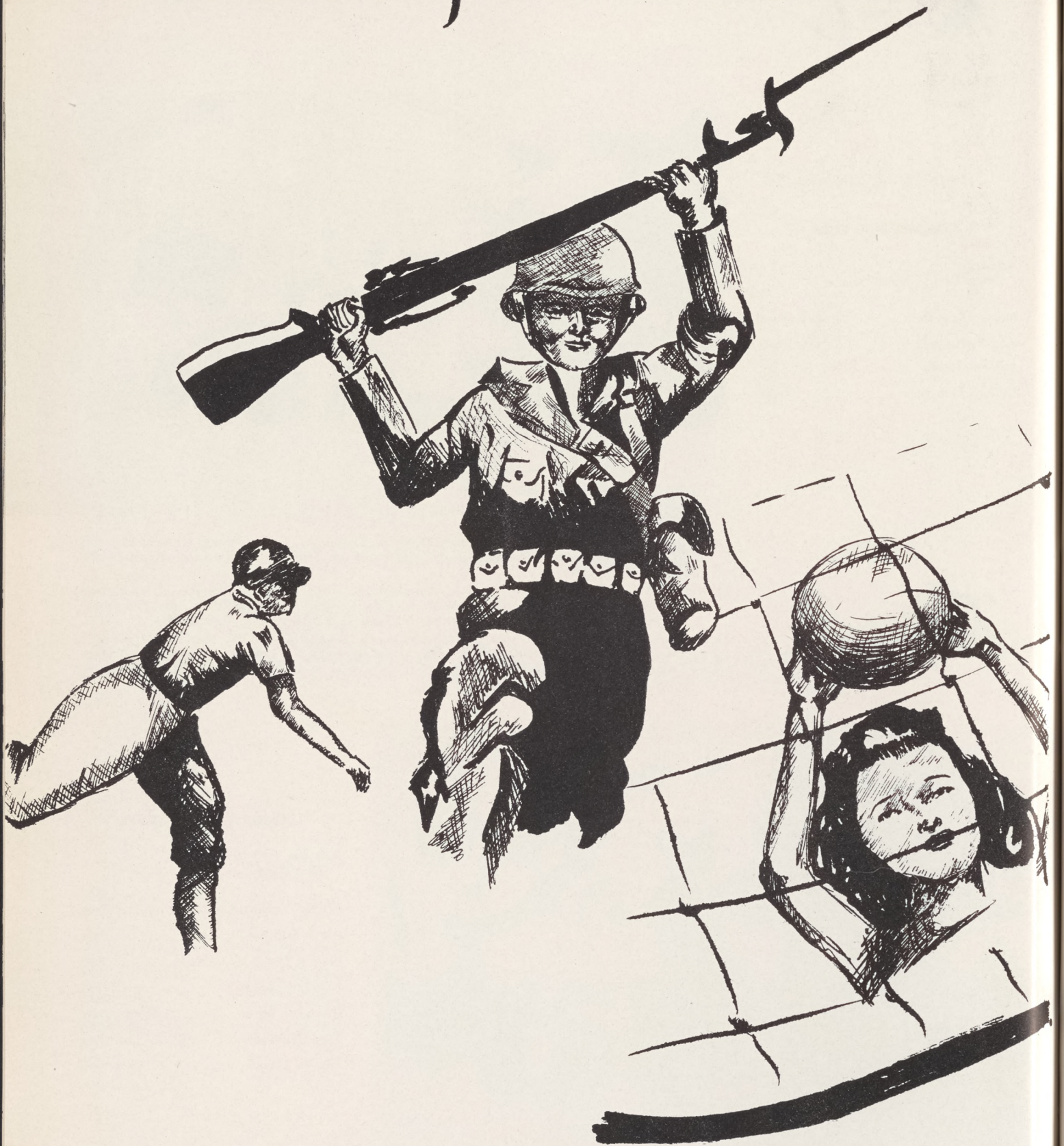


First Row: M. Shimoide, B. Yoshikawa, M. Tsugawa, M. Yamamoto, Mrs. May, M. Fujimoto, N. Doi, K. Nitasaka, K. Nojiri.

Second Row: Miss Hayashi, Y. Okamoto, T. Otani, M. Egusa, N. Yasumoto, H. Sasaki, B. Kane-naga, Y. Totsubo, Miss Okuno.



# Sports







M.I.



# Varsity Football



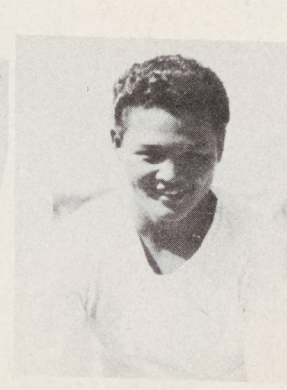
Front Row: M. Teraoka, K. Ogawa, S. Yamashita, T. Ryono, H. Fujimoto, H. Seiji, B. Mitsuyoshi, N. Aoki.

Back Row: F. Katayama, G. Ohashi, T. Shimamoto, S. Tanisawa, G. Fujioka, B. Nakamura, R. Fukagawa, J. Mori, H. Hiromoto, T. Yamamoto, Mr. Mason Davis.

In spite of the fact that the Canal Golden Bears coached by Mr. Mason Davis credited only two victories during the 1944 football season, the gridiron squad exhibited their ability as good sports, as well as hard-fighting players.

Much of the credit goes to our fullback Bobby Nakamura with his versatility in both passing and running. Nakamura and James Yamamoto were chosen into the project All Star line-up. Others picked in honorable mention from the Bears squad were Tak Ryono and Harou Hiromoto.

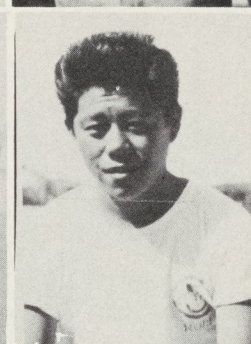
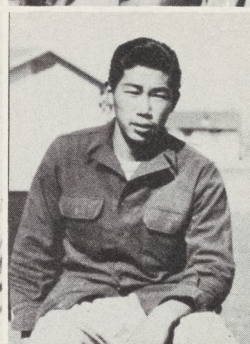
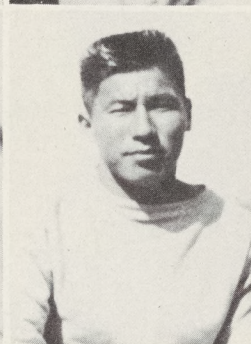
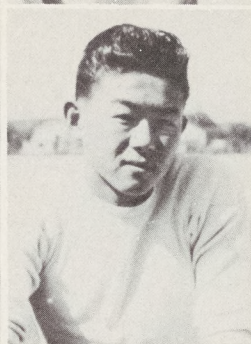
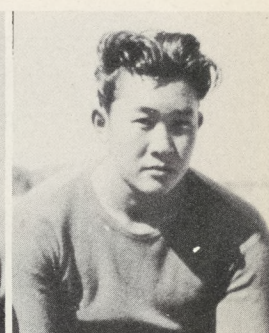
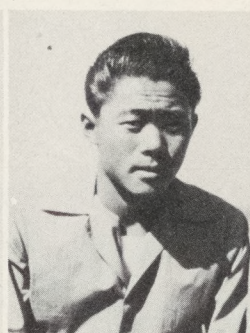
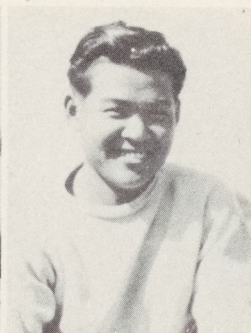
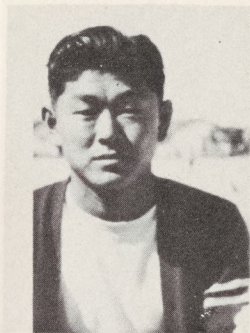
Other outstanding players in the roster were: G. Fujioka, H. Fujimoto, F. Katayama, G. Ohashi, K. Nishimoto, H. Kadonaga, and N. Aoki



Left to right:

James Yamamoto  
Tak Ryono  
Haruo Hiromoto  
Bob Nakamura





Sho Yamashita  
Hide Fujimoto

Tosh Shimamoto  
Kiyo Ogawa

Frank Katayama  
George Fujioka

Ben Mitsuyoshi  
Hide Kadonaga

Seichi Tanisawa  
Norio Aoki

George Ohashi  
Tommy Yamamoto

### NORTHWESTERN LEAGUE

First Round			Second Round		
	Opp.	Bears		Opp.	Bears
Cubs .....	26	0	Broncos .....	20	0
Broncos .....	12	0	Cubs .....	14	0
Mustangs .....	0	14	Mustangs .....	7	13
Practice Game					
	Opp.	Bears		Opp.	Bears
Block 5.....	0	0			

Seikyou Hanashiro

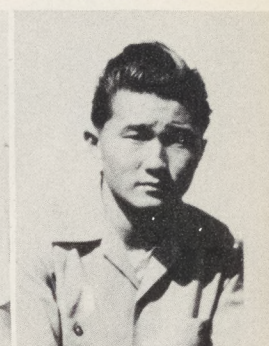
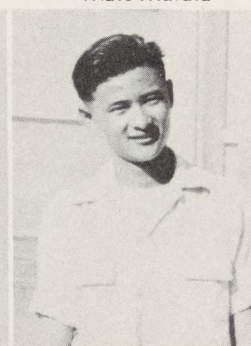
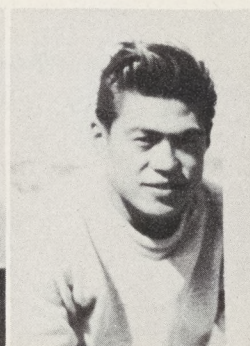
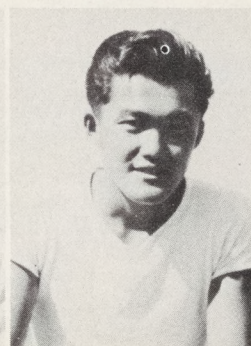
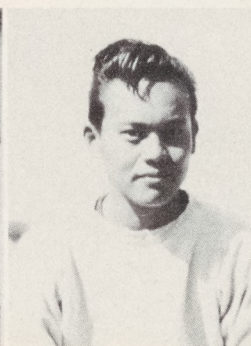
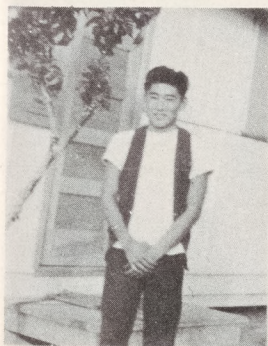
Roy Fukagawa

Joe Mori

Masaji Teraoka

Mats Murata

Hideo Seiji





# Lightweight



Front Row: W. Yamamoto, T. Hiratsuka, G. Katayama, J. Hanashiro, J. Akioka, J. Otani, I. Yokoyama.  
Back Row: S. Nakata, A. Kobata, J. Yasumoto, T. Matsunaga, J. Kimoto, T. Terashi, K. Yamane, E. Nishi, Coach George Waki.

With the aid of several Jerome players the Canal Hi "C" team went through a fairly successful season.

Playing against much heavier and more experienced foes, Coach George Waki was very pleased with his team for their fine sportsmanship, even though they failed to win a game.

Left Half Joe Hanashiro, a transfer from Jerome and Fullback Tostie Hiratsuka were the sparkplugs of the team with their fine deceptive running. Other outstanding players were Quarterback Suyenori Yamada, Right Half George Katayama and Right Guard Akira Kobata.

## First Round—South Western

Canal High .....	0	Butte Hi "Eagles" .....	25
Canal High .....	6	Block 5 "Bobcats" .....	6
Canal High .....	6	Butte "Yellow Jackets" .....	18
Canal High .....	0	Butte "Ramblers" .....	7

## Second Round—South Western

Canal High .....	6	Butte "Yellow Jackets" .....	33
Canal High .....	0	Block 5 "Bobcats" .....	0
Canal High .....	0	Butte Hi "Eagles" .....	26
Canal High .....		Butte "Ramblers" .....	



# Varsity Basketball



Front Row: M. Takahashi, J. Mori, H. Fujimoto, F. Katayama.

Back Row: T. Shimamoto, S. Tanaka, T. Ryono, B. Nakamura, H. Hiromoto, S. Hanashiro, Mr. Davis.

The Canal Hi "Golden Bears" went through a rather unsuccessful season due to the lack of height and experience. Coach Davis was, however, pleased with this hard-fighting cage team. The "Bears" made use of their speed as Right Forward Haruo Hiromoto and Center Kaz Oto paved the way. Rounding out the team were forwards Frank Katayama, Seikyou Hanashiro, and Sam Tanaka; Centers Joe Mori and Mack Takahashi; Guards Hide Fujimoto, Tak Ryono, Bob Nakamura, and Tosh Shimamoto.

	Opp.	Bears		Opp.	Bears
Butte Hi Eagles.....	23	12	Coolidge Hi .....	50	30
Butte Hi Eagles.....	23	40	Gilbert Hi .....	55	40



# B Basketball



Front Row: H. Sakata, S. Hikido, S. Yamashita, N. Aoki.  
Back Row: J. Yasumoto, K. Toyama, G. Ohashi, T. Tagawa, Mr. Davis.

The Canal Hi "B" Cagers with their fast breaks, but lacking in height, were defeated in the majority of their games. However, much credit goes to Forwards Norio Aoki and Kikuo Nishimoto and Center Jimmy Kimura who played outstanding games.

Rounding out the squad as forwards were Tom Tagawa, Hiro Sakata, John Jasumoto, and Kikuo Nishimoto; centers, Jimmy Kimura and Hideo Kadonaga; guards, Sho Yamashita, Shogo Hikido, George Ohashi, Ken Asamoto, Reiro Ogawa, and Sus Matsumoto.

Butte "B" .....	18	26
Butte "B" .....	32	10
Coolidge "B" .....	27	25



# C Basketball



Front Row: F. Seiji, T. Imura, H. Shigaki, F. Matsuoka, T. Hiratsuka.  
Back Row: Y. Hamada, T. Sano, N. Morita, J. Adachi, H. Hamaguchi, Mr. Davis.

The short but speedy Canal Hi "C" quintet was nosed out by its opponents in this season's games. Much credit goes to the "dead eye" Forward James Adachi and Center Tosh Hiratsuka.

Rounding out the team as forwards were Yukio Hamada, Jim Ryono, Suyenori Yamada, Tosh Sano, James Adachi, Tom Imura, and Yukiaki Takeda; as centers, Tosh Hiratsuka and Howard Hamaguchi; as guards, Henry Shigaki, Nori Morita, Frank Matsuoka, Kenso Araki, and Fred Seiji.

	Opp.	Canal
Coolidge "C" .....	26	24
Gilbert "C" .....	40	22
Butte "C" .....	13	20



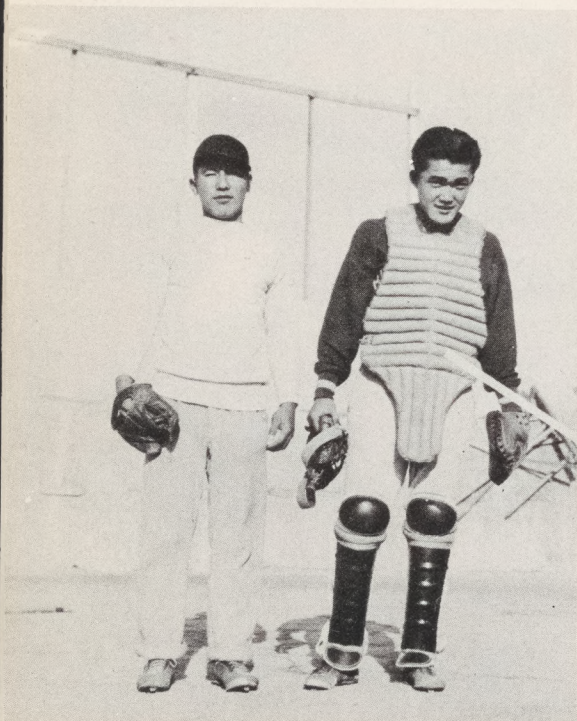
# Baseball



Front Row: A. Kobata, J. Mori, N. Aoki, B. Mitsuyoshi, B. Nakamura, G. Ohashi.  
Back Row: K. Kato, G. Miyasaki, A. Segimoto, T. Yamamoto, S. Murakami, G. Fujioka, T. Shimamoto, Mr. Santo.

Not Pictured: S. Tanisawa, T. Ryono.

George Fujioka and Joe Mori, Battery.



Answering the call for the 1945 Horsehide Nine, a host of eager youngsters, both experienced and inexperienced, greeted Coach Tets Santo at the initial practice session. With the magnificent record of last year's team to match, the candidates knuckled down to weeks of intensive practice before the first game.

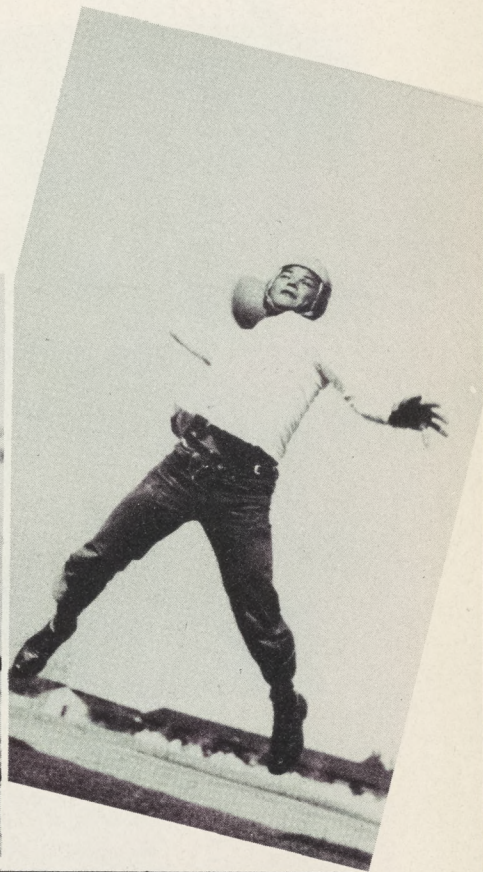
The hard work paid off in a decisive Golden Bear victory over Block 55. Still in the practice stage, the Bears traveled north to meet Mesa High in a game arranged by Mr. Davis. Playing into an extra inning, the Bears again came through with a victory. Their first defeat came at the hands of the cross-town rivals, the Butte High Eagles.

Before the start of the first league game, a great blow fell over the team when George "Lefty" Fujioka left the center. Fujioka had been the leading pitcher of last year's championship team and was being counted upon to do much of the hurling chores. However, with two other fine hurlers on the pitching staff and a number of heavy hitters, the Bears were looking forward to a very successful season.

	Opp. Canal	
Block 55 .....	7	12
Mesa High .....	1	3
Butte High .....	4	1



# Snaps





# *G.A.A.*



First Row: G. Kawahara, G. Hata, M. Hoshino, R. Hiromoto, A. Nakata, Y. Seiji, S. Mizufune, Miss M. Mark, H. Matsuura, M. Kumataka, K. Tagawa, M. Yoshihara, K. Handa, L. Ide, A. Kouno.

Second Row: K. Takahashi, N. Yuki, M. Hachiya, N. Fukagawa, D. Gamow, C. Kunioka, A. Tsuruda, N. Matsuda, M. Fujimoto, C. Sugimoto, M. Egusa, M. Shiine, T. Otani, M. Yamamoto, A. Yamada.

Third Row: M. Yamamoto, T. Izuno, H. Arakaki, K. Itomura, L. Nagata, B. Nakamura, P. Hirakawa, F. Tara, F. Yamamoto, K. Deguchi, A. Murayama, L. Tanigawa, B. Kanenaga, M. Ishimine, J. Seiji.



Alyce Kouno  
President



Bernice Kanenaga  
Secretary



Miss Mary Mark  
Advisor



Grace Kawahara  
Vice President



Lillian Tanigawa  
Treasurer



### SPORTS HEADS

First Row: R. Hiromoto, softball; C. Kunioka, tennis; K. Tagawa, badminton.

Second Row: P. Hirakawa, hiking; A. Murayama, volleyball; F. Yamamoto, basketball;; C. Sugimoto, speedball; M. Ishimine, ping pong.



This year's Girls' Athletic Association came through with flying colors as being the most successful and triumphant of all.

Presided over by Alyce Kouno, president; Grace Kawahara, vice-president; Bernice Kanenaga, secretary; Lillian Tanigawa, treasurer, and Miss Mary Mark as the able advisor, the G. A. A. was busy with activities such as inter-class tournaments, hikes, G. A. A. socials, and parties. Two of the main features were an initiation and a G. A. A. sponsored king and queen contest.

Quite a large number of girls have earned membership into the G. A. A. through their active participation in major and minor sports, the four major sports being volleyball, basketball, speedball, and softball. This year, tumbling was added to the minor sport list and it was found to be very successful.



### INITIATES

First Row: M. Takata, S. Yamashita, M. Fukuzawa, M. Bungo, F. Hachiya, T. Sasa, M. Takeda.

Second Row: K. Sasa, J. Kato, C. Nishimura, M. Nakata, M. Fujimoto, J. Hamada, L. Hagi-hara, M. Osaki, B. Yoshimi, M. Furukawa.



# Champs



**SENIORS  
VOLLEYBALL**

First Row: K. Tagawa, K. Deguchi, A. Kouno, T. Arakaki, C. Sugimoto.  
Second Row: B. Kanenaga, M. Shiine, Y. Takano, M. Egusa, G. Kawahara.

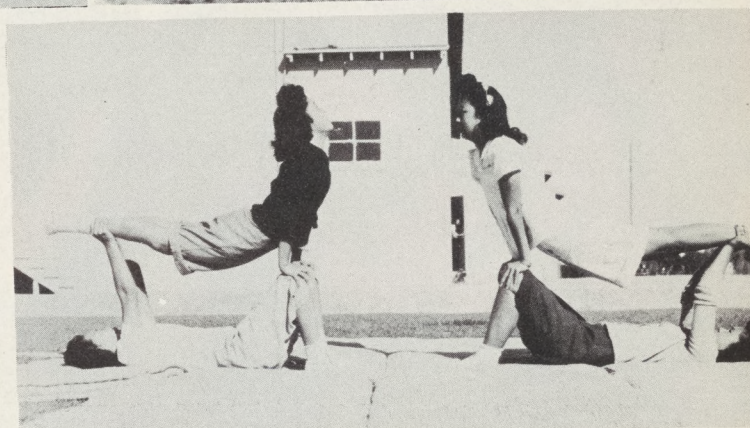
**JUNIORS  
BASKETBALL**



First Row: Y. Ii, F. Yamamoto, M. L. Wakasa, L. Tanigawa, A. Murayama.  
Second Row: M. Kumataka, H. Sawai, I. Iwamura, A. Matsumoto. Fujiko Tara, captain.

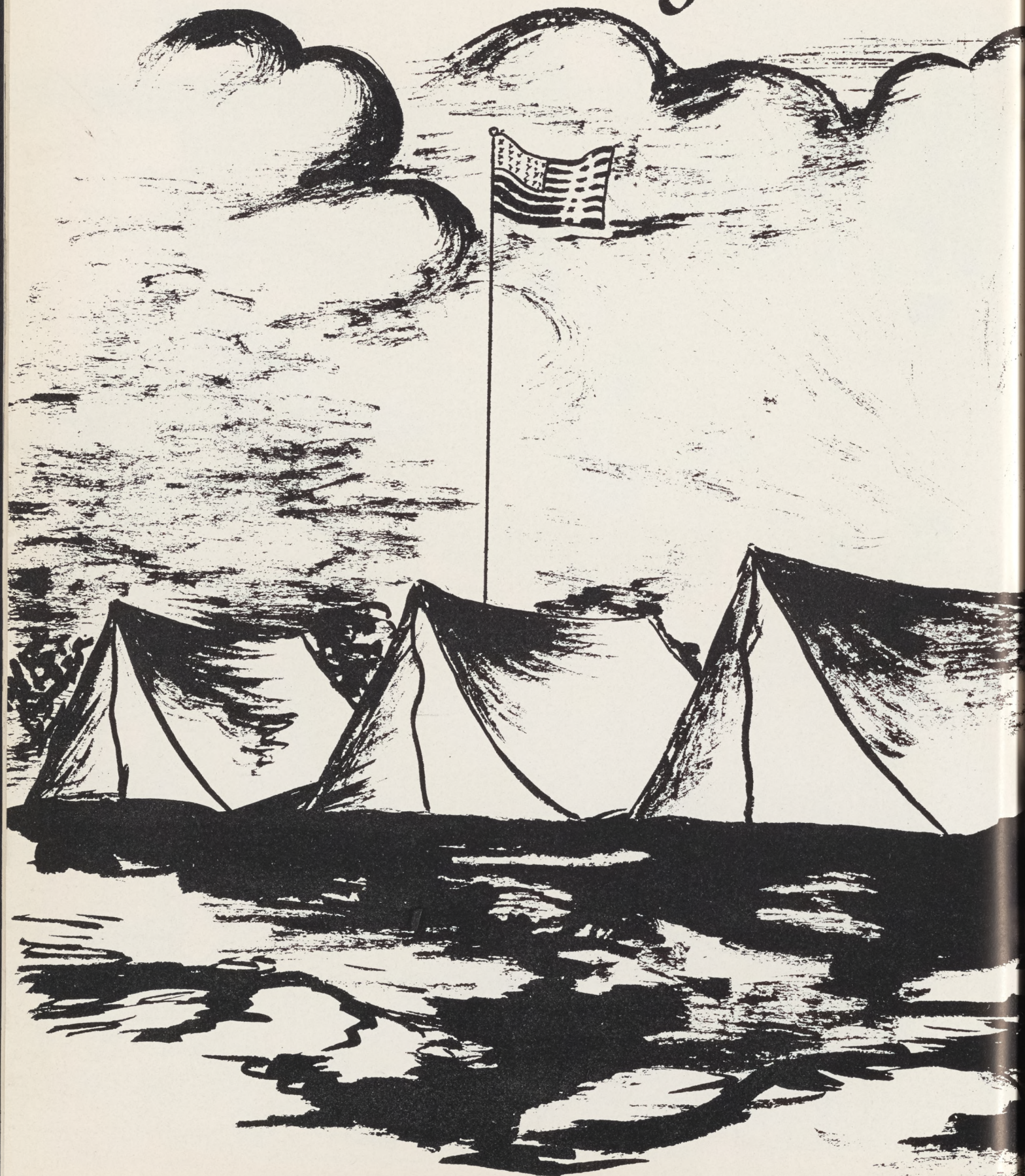


# Snaps





# Community









# Serving the Community



## ADMINISTRATION BUILDING WORKERS

First Row: L. Knaggs, J. Bryce, S. Sasaki, K. Iwanaga, S. Satow, J. Morimoto, F. Sasaki, K. Yamasaki, T. Fujii, B. Fukuzawa, F. Kobayashi.

Second Row: F. Doi, S. Heyano, F. Mitsuyoshi, M. Shigyo, N. Hirabayashi, K. Sumida, U. Suzumura, K. Kuramoto, L. Peddy, F. Hart, A. Aoyagi, K. Fujimoto.

Third Row: R. Tamori, S. Yamashita, D. Sawai, B. J. Okubo, K. Miyazaki, Y. Hayashi, T. Hosoura, L. Shimizu, J. Seiji, S. Ichimoto, C. Matsuura, D. Sano, H. Shirakawa, M. Makishima, S. Hirano, T. Yahanda.

Fourth Row: T. Hamai, Wada, Fukuda, M. Matsuda, M. Matsuda, Y. Urabe, T. Yoneyama, W. Kurotori, Y. Emoto, H. Hiratsuka, K. Odashima, M. Adachi, M. Konya, S. Nakatani, J. Shelly.

## CANAL FIRE DEPARTMENT

Left to right: R. Yamada, S. Mitsuyoshi, K. Kirihara, F. Takeuchi, A. Saiki, K. Sekiguchi, S. Hashizume, S. Koge, T. Saika I. Kishi, Chief Brightwell.



## CANAL HOSPITAL STAFF

Left to right: Dr. Nishi, G. Togami, J. Doi, S. Kusanagi, M. Nishimura, C. Osaki, F. Kakiuchi, B. Doi, Miss Fowler, R. N.





## INTERNAL SECURITY

Front Row: M. Komori, G. Kitajima, G. Hamano, Y. Hanashiro, M. Pintz, K. Kamigaki, S. Haranaga, G. Oino, H. Hachiya.

Second Row: I. Omori, S. Yamanaka, T. Miyai, H. Nishioka, M. Kobayashi, K. Kawata, M. Kishi.

Third Row: T. Hoshizaki, I. Imura, H. Tanigawa, J. Hayashi, M. Takemoto, J. Kawagoe.



## COMMUNITY COUNCIL

First Row: K. Kiriara, E. Goodman, M. Daita, B. Fukuzawa, J. Shelly, Y. Miyoshi.

Second Row: S. Uchiyama, G. Harada, F. Kobayashi, K. Otsuka, M. Sano, T. Hamai, Y. Muramatsu, S. Mitsuyoshi.

Third Row: T. Mori, T. Shintani, M. Morishima, I. Kodama, T. Fujikawa.



## BLOCK MANAGERS

Front Row: K. Sumida, U. Suzumura, K. Kuramoto, T. Yahanda, J. Shelly, Y. Aoyagi, K. Fujimoto.

Back Row: Y. Urabe, S. Satow, W. Kurotori, M. Adachi, T. Fujii, K. Odashima, H. Hiratsuka, R. Emoto, T. Yoneyama, S. Nakatani, M. Konya, K. Yamasaki.



## CAS OFFICE STAFF

Left to right: K. Yoshida, K. Kurose, M. Daita, S. Seiji, K. Shigaki, C. Yamaguchi, G. Furuya, M. Kurata.





# *Elementary School*



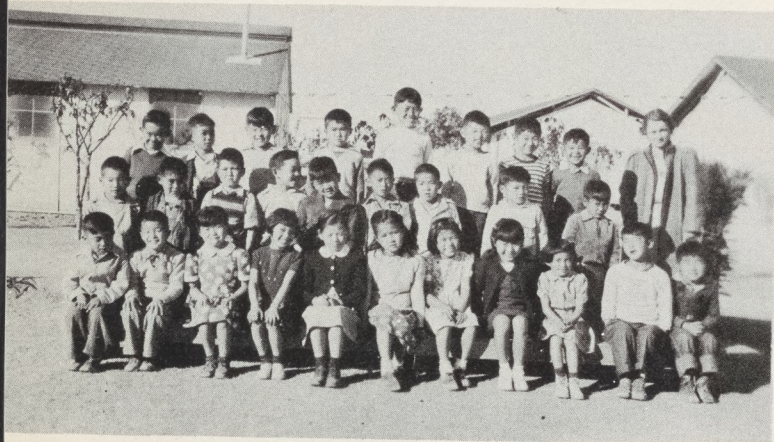
FIRST GRADE



FIRST GRADE



SECOND GRADE



SECOND GRADE



THIRD GRADE





FOURTH GRADE



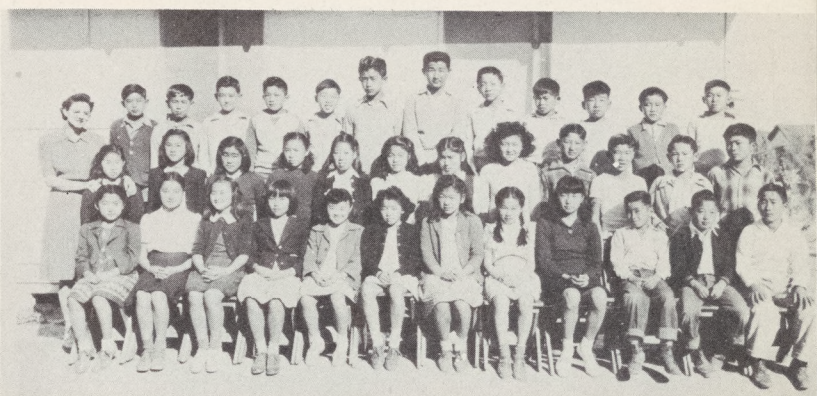
FOURTH AND FIFTH GRADES



FIFTH GRADE



FIFTH AND SIXTH GRADES



SIXTH GRADE



# Churches



CHRISTIAN CHURCH



BUDDHIST CHURCH

# Girl Scouts



TROOP 8



TROOP 9



TROOP 7



TROOP 10



# Snaps





# Canal Community

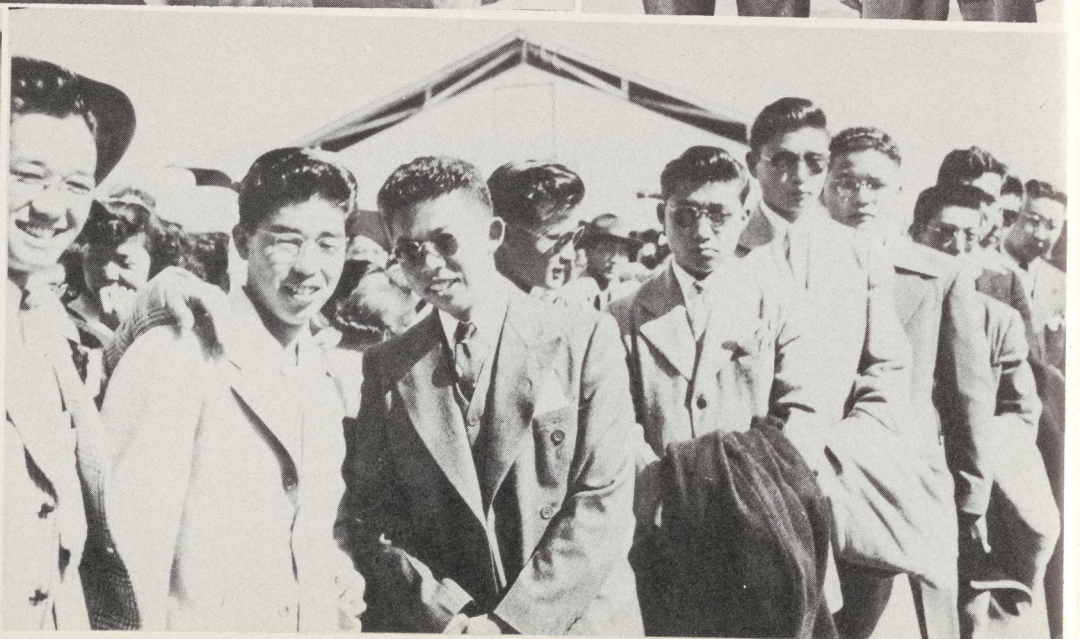
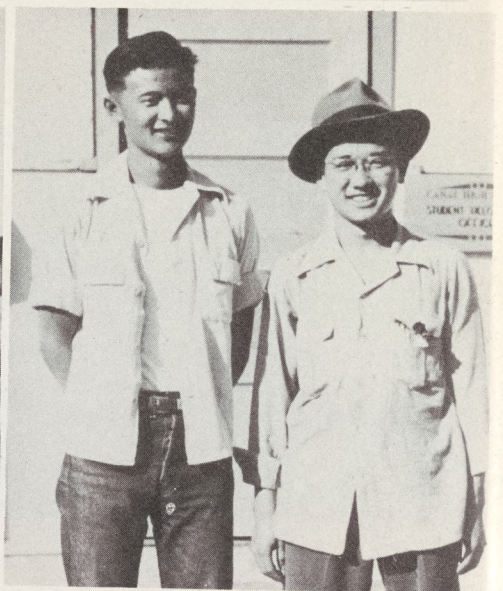
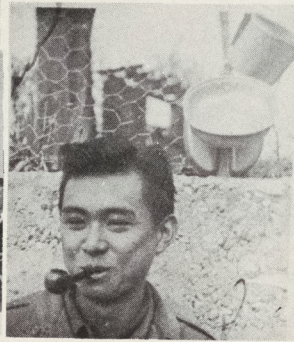
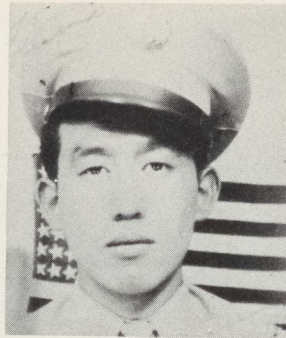
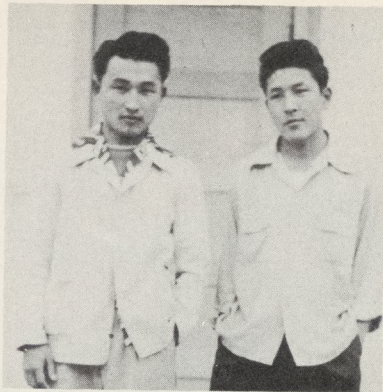






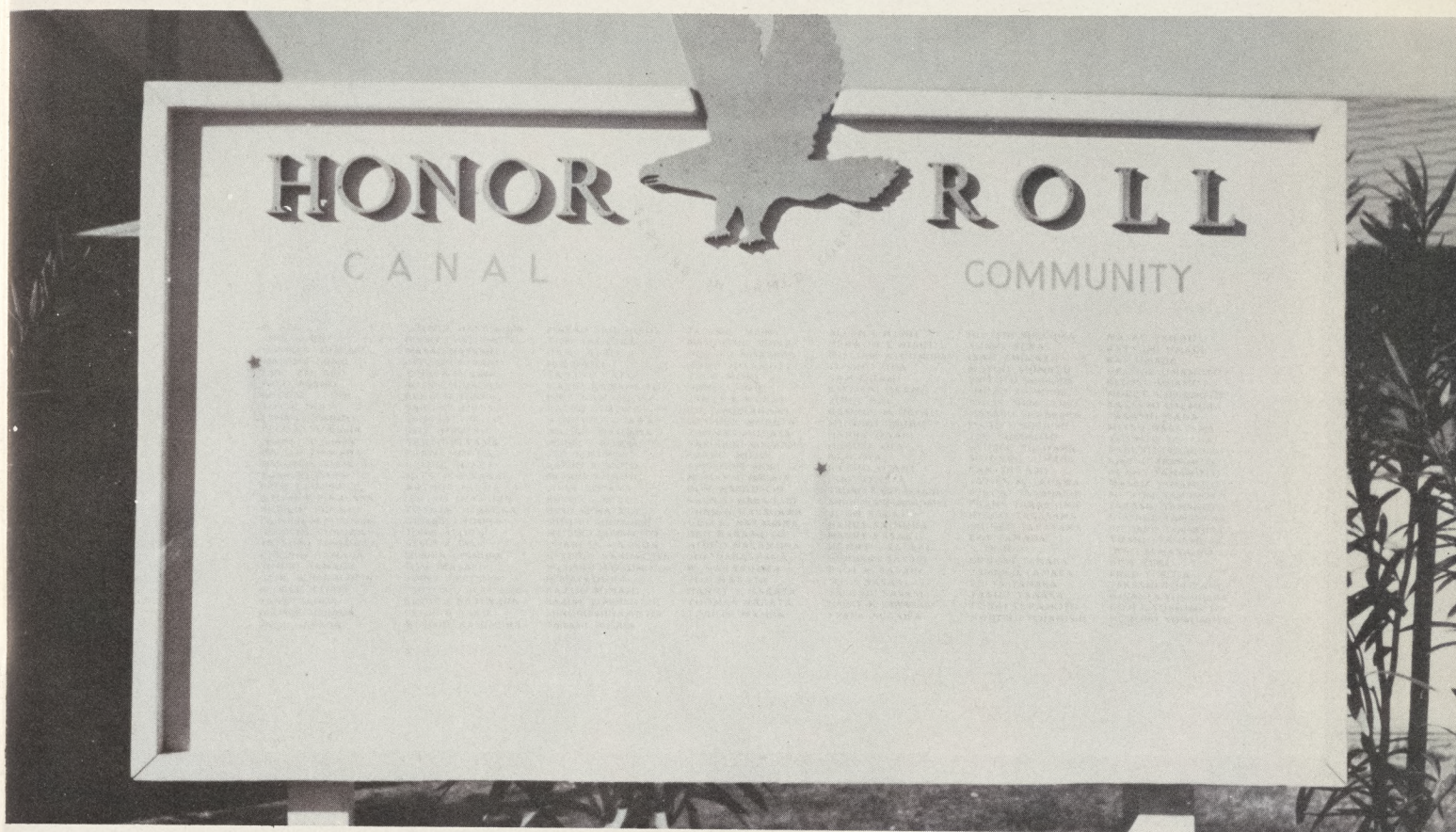


*Snapshots*





# Dedication



Presented by

**GILA RIVER COOPERATIVE ENTERPRISE, INC.**  
**RIVERS, ARIZONA**



# *Acknowledgements*

Because of the futility of trying to grope for the proper words in expressing our deep feeling of gratitude, we simply say thanks to those to whom we are indebted for the aid they have given in publishing this book — to Mr. J. P. McVey for graciously giving his time in taking the pictures; to Mr. George Okamoto for making the arrangements for studio photography; to Miss Maxine Hagan, Miss Della Taylor, and Mr. Warren Higgins, our advisors, for their invaluable editorial and financial advice; and to Miss Cecile Lancaster, Miss Helen Tanigawa, the office staff, and Miss Jane Hayashi for those courtesies which were not really a part of their jobs, but which they performed eagerly and helpfully.

**THE 1945 RIVULET STAFF**



WRA Library Washington



WRA Library Washington



