

J2.336:2

2 of 2

1945

67/14

C



DEFENSE

U.S. War relocation authority. Palm

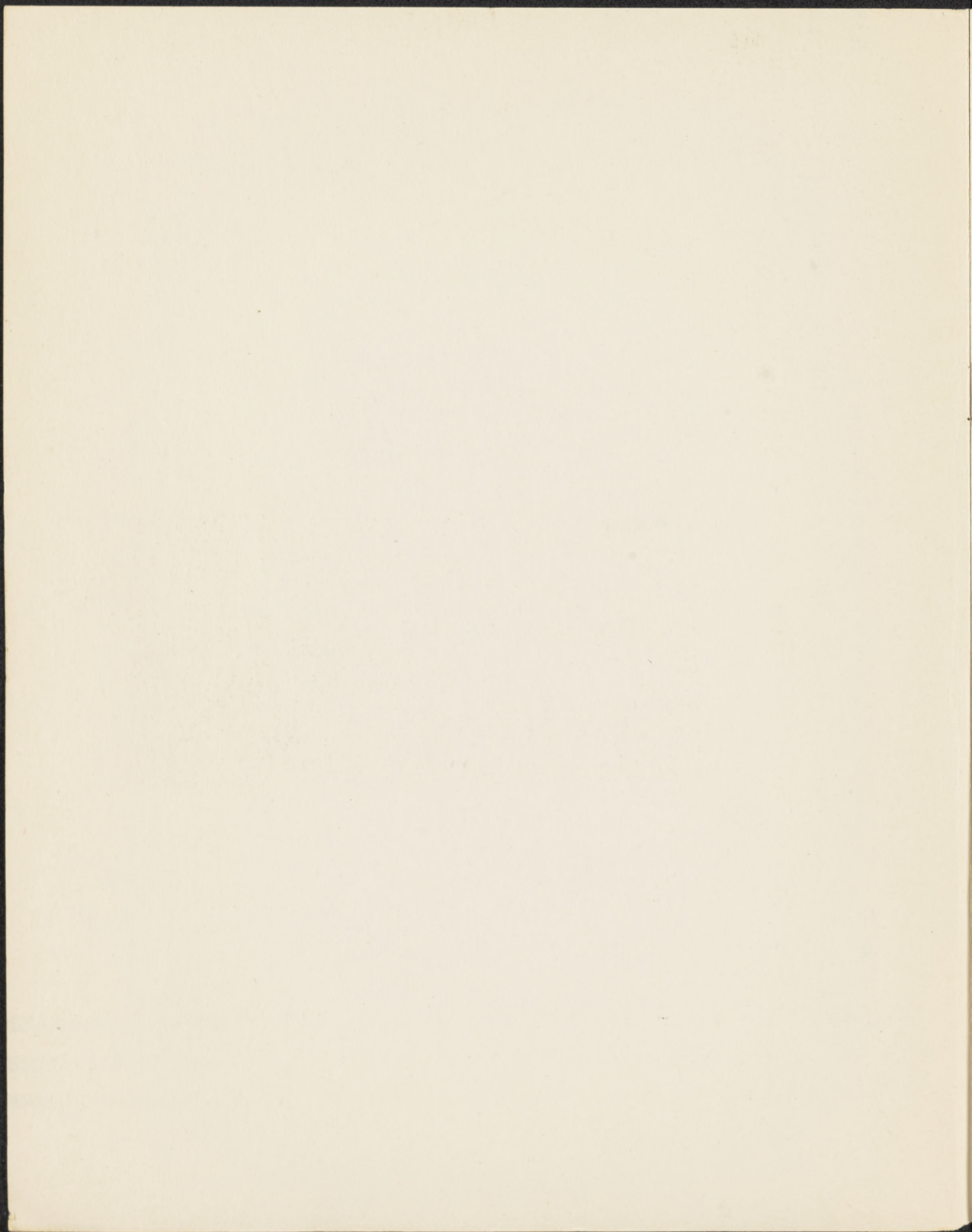
J2.36



# POST-AÑO 1945

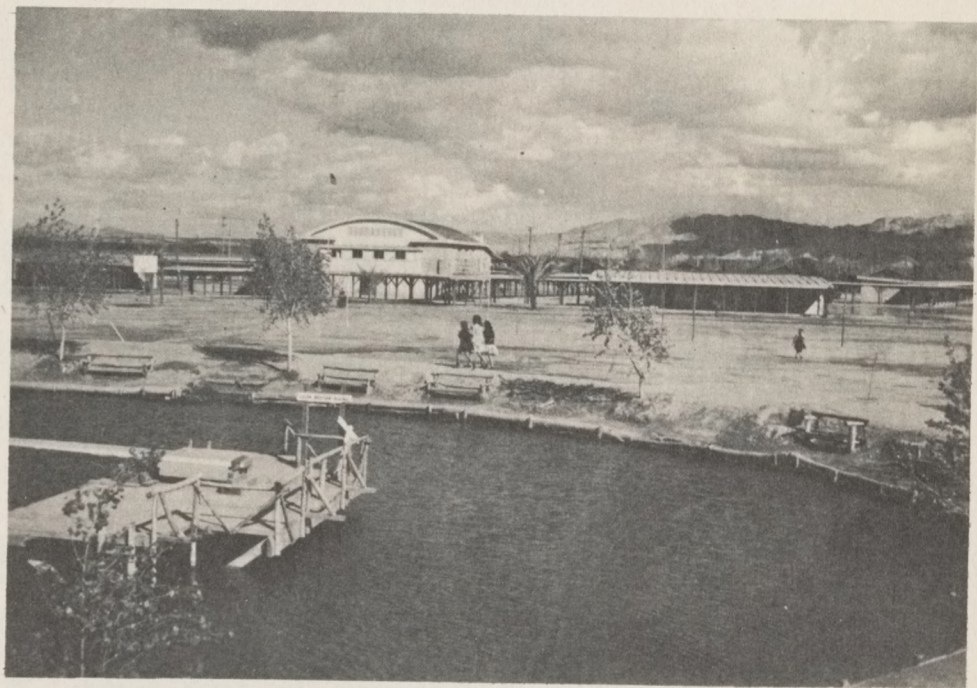
Postm highschool annual







POST-ARTO  
1945



POSTON ARIZONA



100-100000

100-100000

100-100000

100-100000

100-100000

100-100000

100-100000

100-100000

100-100000

100-100000

100-100000

100-100000

100-100000

100-100000

100-100000

100-100000





AKIYAMA, HIDEO  
 CHIKAHISA, CARL  
 ENDO, MASAO  
 FUKAWA, HIROSHI  
 HAYASHI, SHIGERU  
 HIRABAYASHI, KAZUO  
 HIRATA, LOUIS  
 HIURA, TOM  
 IKARI, ROBERT  
 IWAMOTO, KAS  
 IWANAGA, TOM  
 KAIHARA, GEORGE  
 KAMIMOTO, MICHAEL  
 KATO, FRED

KAWAMOTO, JAMES  
 KAWASAKI, JOHN  
 KIKUCHI, TAKETOSHI  
 \*KIMOTO, TOSHIO  
 KISHABA, FRED  
 KOBEATA, HARUO  
 KOMATSU, GEORGE  
 KUBO, HENRY  
 MARUYA, GEORGE  
 MIYATA, TOBEY  
 MORIKAWA, JIM  
 MURAKAMI, JOE  
 NAKABAYASHI, HENRY  
 NAKAHARA, JIM

NISHIJIMA, KATSUMI  
 OBATA, JAMES  
 ODA, KAZUO  
 OGAWA, ETSUO  
 OKIMOTO, DON  
 OMOTO, WILLIAM  
 OTA, TAKESHI  
 SAKAI, HACHIRO  
 SAKEMI, RINZO  
 SANBONMATSU, YOSHIYA  
 SEKI, LLOYD  
 SHIGEKAWA, WILLIAM  
 \*SHIMANO, MOTO  
 \*\*SHIOMICHI, JOE

\* SHOJI, KOBE  
 SUGINO, ARTHUR  
 TAKAHASHI, JOE  
 TAKEDA, HIROSHI  
 \*TANAKA, HAJIME  
 TSUCHIYAMA, GEORGE  
 YAMAGUCHI, I'AC  
 YAMASHITA, KANSHI  
 YAMASHITA, SUZO  
 YAMAMOTO, GEORGE  
 YATSU, LAWRENCE  
 \*YOSHIDA, MITSUO

\* TEACHERS



# DEDICATION

Recently on the Army Hour, a Japanese-American captain of the 442nd battalion was interviewed. One of the questions asked of him was why he was fighting. He replied, "I know what I am fighting for, and I am sure that all the Nisei boys in my company also know for what ideals they are fighting. Almost all the boys either come from relocation centers or else have families living there. When, in 1942, approximately 110,000 citizens of Japanese ancestry were asked to leave California, their friends, and their homes to live in some God-forsaken place, many voiced disgust and expressed bitterness and sometimes contempt during the confusion and turmoil of the evacuation. Was it not in the freedom, liberty, and justice for "all" that they had placed their trust and had built their homes and ideals? Yes, little wonder why these people, especially the Nisei, pondered perplexedly and questioned the justice of the actions that were taken against them.

Yet, when the appeal for volunteers for the armed forces came from the headquarters of the United States Army, hundreds of eligible men, realizing that the loud clamor and display of racial discrimination against them came from an economically selfish minority, heartily welcomed the opportunity to serve their country, and answered the call with renewed faith in the government of the people, by the people, and for the people. These volunteers and many others who were later called are the ones who have paved the way which leads us back to the normal existence of the average American family. These fellows have offered their services, and in many cases their lives, that their loved ones might be assured a brighter and a more solid future.

I know why I am fighting, I am fighting to prove that my people are as American as the Smiths, the Schwartzes, and the Szudinskis."

\*\* \*\* \*

The Staff of the "Post Ano" of 1945 proudly dedicates this edition of the annual to our boys who formerly attended this Poston High School, and who are now serving in the armed forces.









# SCHOOL DAYS

As we come to the close of the third year of our studies here in Poston, we know that we have accomplished much and obtained an experience that not one of the students of Poston will ever forget. We are now standing on the threshold of a new and better life.

Glancing reminiscently back to that first year of school in Poston, we can again picture ourselves trudging dutifully to school. Several black barracks scattered aimlessly across the camp and makeshift desks were all that we could call our school. Classes were held in gloomy black barracks and the situation was hardly one to forget. Studying in barracks was none too pleasant a task for any student, and the idea of walking for blocks on end to each class made everyone groan inwardly. Black seemed to stare at each Postonite from all directions, and surely black could have described appropriately the depressed feeling the Nisei students had. School in barracks! Why we wouldn't have believed a few years back, not even a year before this happened, that we would be attending school in barracks situated all over a desert camp. Those first few months were trying--in the winter, everyone was partially frozen and trying to keep warm with one inadequate stove or an outdoor bonfire; in summer, perspiring profusely and trying to keep cool with shaved ice cones and umbrellas. Yes, those were the days. No school unity or spirit prevailed among the students and to most of us this was not school at all.

Under the able principalship of Dr. Arthur L. Harris and Dr. Miles E. Cary, our superintendent, the first year eventually came to a close.

As that first year slipped by into the past, the construction of the new adobe plant for the elementary grades was nearing completion; the soft white sand had nestled down to a hard, compact ground under daily sprinkling of water; and the first graduation of Poston was held. A restful three months of vacation. Then school began its call for eligible students again, and the second year of the history of the Poston Schools was on its way.

It was, at first, discouraging to have to go to Poston High School for the second year, but prospects were much better as the school was more centralized. Using the elementary adobe buildings and only a few barracks, Poston Schools swung off to a rousing start under Mr. Arthur M. Main's leadership. Dr. Arthur L. Harris had succeeded Dr. Cary as Superintendent of Education. Since the high school was now more or less centralized, school spirit and unity were easily attained. The adobe buildings with their cool grays and blues made study almost pleasant. Somehow this year, school was more "school", but still the days of yesteryear were too much with us.

Towards the close of the year Mr. John Girdler took the steering wheel as our principal after Mr. Main's departure. An air of interest and cooperation sprang up with each person becoming a part of the new school in its goal of striving to be an outstanding educational institution.

This third and last year we see Poston Senior High School a school of which we can be justly proud----for it is the work of each individual student.



of each teacher, of each laborer who patted adobe into position, of each parent who looked toward the the light. We now hold classes in our own adobe plant.

The main entrance of the auditorium faces the camp proper and can be seen from the very gate to the project. On each of its sides sprawl the long narrow buildings with their blue and rust trimmings. Under the bright Arizona sky at last united by the medium of a centralized plant we work and play.

Since so many students have relocated, the population of Poston has decreased till the student body is now greatly diminished. Most of us will soon be entering new schools, making new acquaintances, and becoming a part of other American high schools; but always the days of Poston will be a memory imprinted clearly and immeasurably in each Poston students mind.

We have made history---and by the trying experience of these last three years, we, the students of Poston today, are better citizens. The priceless experience we have gone through has taught us much. When the graduating class of '45 receives its hard earned diplomas-----it will mark the end of our school history for many of us, but the beginning of a new life, a life that has been partially fashioned by sun, wind, black barracks, and adobe----to say nothing of the many teachers.

Takako Nakahara



MOVING

IWAMOTO  
— 3 —





# ANNUAL STAFF

Left to right-First Row: Tomi Ono; Masako Hirabayashi; Martha Takanabe; Louise Fukaye; Marcella Miyata; Mitsey Ohye. Second Row: Kazumi Arichiyama; Sadao Emoto; Lloyd Nishijima; Tommy Yamaoka; Akio Iwamoto; Miss Lapinskas.

EDITOR-IN-CHIEF----- Akio Iwamoto

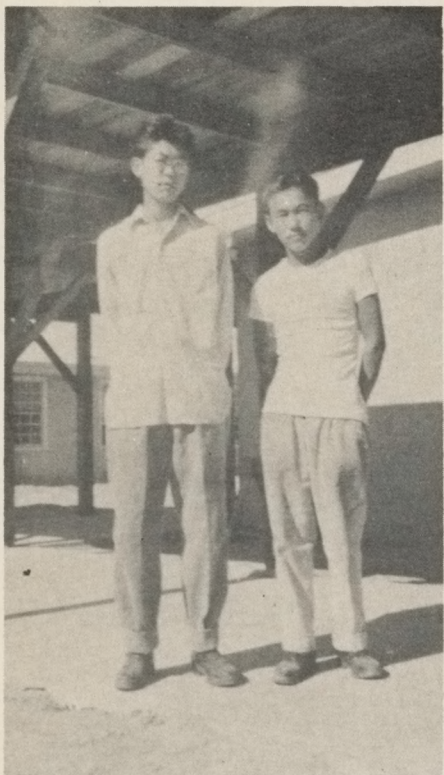
Photography Staff---- Gen Masuda; Lloyd Nishijima; Kazumi Arichiyama; Sadao Emoto

Literary Staff----- Marcella Miyata; Tomi Ono; Masako Hirabayashi; Yoneko Gotori

Art Staff----- Mitsey Ohye; Akio Iwamoto; Agnes Ito; Ruth Horikawa; Louise Fukaye; Mary Takanabe; Snake Okuma

Business Staff----- Yoshi Watanabe; Kuniye Nomura; Akemi Morita; Martha Takanabe; Kho Iseda; Leo Nakamura; Tommy Yamaoka; Howard Inao.





THE WOLF 'N SAKO



MUTT 'N JEFF



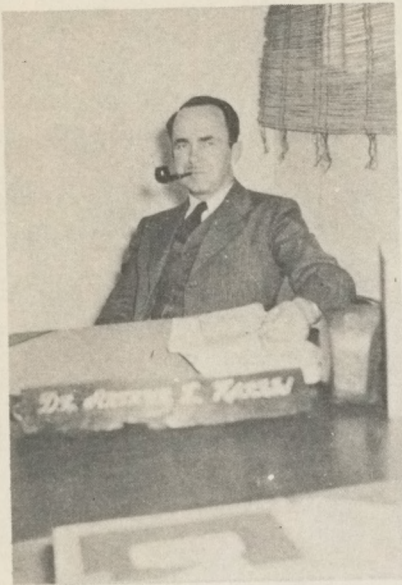
HEY, JIM!



# ADMINISTRATION







In the pages of this book are recorded those scenes and experiences which will live for years to come in the memories of students and staff members. We have seen the beginning and we will see the end of the relocation center schools. Many of us thought the beginning was the end- the end of freedom, of hope for a brighter future, of opportunity. Most of you now realize that the end is the beginning- the beginning of life in which hopes will be brighter, opportunities greater, freedom more secure.

For three years we have lived in the backwash of the main stream of life. You do not know life as it is being lived today, yet all which has gone before has been but preparation for the life ahead. The months spent in Poston may be looked back upon with a fondness which memories lend to the experiences of youth, but we cannot live in the past. That is for old men who dream in the sun. Your lives are in the future,- in a world where what you shall do, what you shall be, will be limited principally only by the resources within yourselves.

He who runs a race must leave the starting line. Poston is your starting line. Best wishes to all of you in the life ahead.

*Arthur L. Harris*



The fragrance of a pipe tickled your nostrils whenever you entered the Superintendent's office in Block 31. And there he was, Dr. Arthur L. Harris, sitting behind his big desk puffing solemnly as he worked with his secretary, Miss Marion Yoshida; his stenographer, Miss Yoshiye Nakamura; his business manager, Mr. Tad Fujii; and his bookkeeper, Mr. Yoshito Ouchida.

At the time of the opening of this camp, Dr. Harris was the principal of the Unit I High School, but later, after the leaving of Dr. Miles E. Cary, he took the position of Director of Education.

We wish to take this opportunity to express our appreciation for the long hours he spent in converting our school from scattered barracks to a modern centralized adobe plant. Many a night, long after everyone had gone to bed, Dr. Harris' light twinkled busily as he worked at the task of bringing accreditation to Poston, and at the job of securing teachers and equipment for us.

Gratefully, Dr. Harris, we thank you.

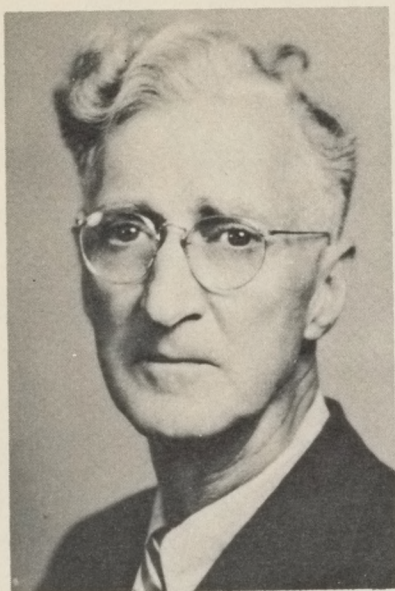


BIRD'S EYE VIEW



PROFILE





It is my privilege to wish the students of the Poston High School a semi-official good-bye. Unofficially, I add to that, luck be with you.

It has been a pleasure to work with most of you. The spirit of co-operation has been amazingly good for these times in which most of the world is out of joint. I have never felt the least concern about what would happen tomorrow. The students have answered this question for me by rising to occasions that were full of difficulty and by carrying off most of the complex problems with good will and helpfulness.

It is just as hard to try to predict what is the future for most of you as it is to predict what is in the future for most of your teachers. We are all "re-locating". We must all make new adjustments. All that I can say is that if the spirit that has been shown by the great majority of students in Poston is persisted in, there is no question about the final result. You will all be able to make a life that will have much joy in it if you will observe the rules of a developing society, work hard, live in peace with your neighbors, and keep hope in your hearts.

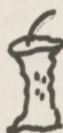
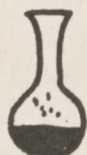
We have not known each other for long. I trust that you have derived as much from the short association as I have.

*John Girdler*



You have seen him.....  
that military bearing, those steely blue  
eyes.....

Mr. Ruben Sundgren, our vice principal,  
who besides filling the position of vice  
principal also taught physics and chem-  
istry. He came to us in the summer of 19-  
44 after climaxing his army career in  
the state of Washington. Since coming  
here he has been responsible for many  
improvements around the school. Although  
he is well know for his resourcefulness,  
He is infinitely more well know for his  
understanding of our problems.



Wayne University, St. Olaf's College,  
University of Minnesota, Franklin Col-  
lege, Ogden High School, Leighton High  
School.....these and many other places  
have received students from Poston as a  
result of the untiring efforts of Miss  
Estelee Hinson, Student Relocation Coun-  
selor. No problem has ever been so dif-  
ficult that Miss Hinson would not tackle  
it. It was this dogged determination,  
this devotion to duty which led to her  
rise from the head of the core classes to  
her present position as Student Reloca-  
tion Counselor.





## OFFICE STAFF

Left to right- First Row: Yuki Ikenaga; Haruko Miyamura; Chiyoko Umeda; Ruth Anne Yamaguchi. Second Row: Herky Miyake; Wimp Hiroto.

As one entered the school office, he was greeted by the noises of typewriters, bells, or maybe one of the office staff trying to find out why Joe was absent Monday or Tuesday.

After about a month of school everyone was familiar with the office staff-- especially Ruth Anne, better known as Lulu, the attendance clerk. Others in this office who were constantly kept busy by the work of keeping the school running smoothly were: Chiyoko, secretary; Yuki, registrar; and the ever-busy Wimp and Herky who replaced genial Roy Otsuka as business managers. Junior High affairs were deftly handled by Haruko, Mr. Sundgren's secretary.

Sure, we seemed to take them for granted, but we all knew that the efficiency of our school depended upon this group. Thanks.



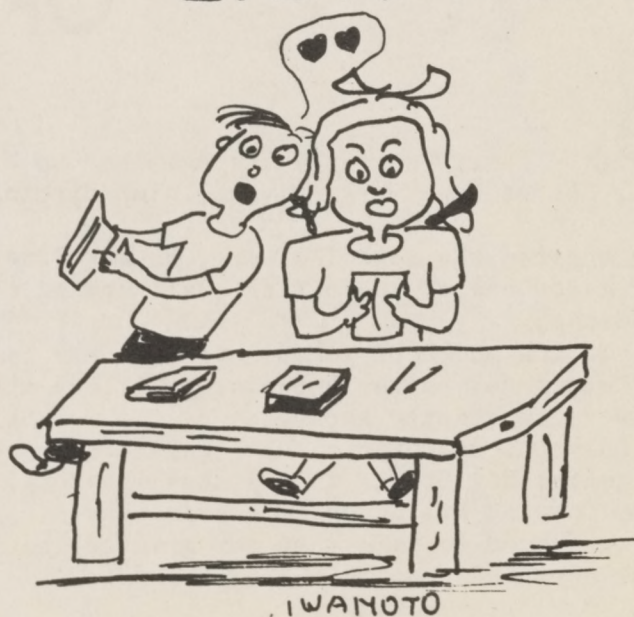


Left to right- Tomo Kuramoto; Stella Wada; Chieko Tajii.

# LIBRARIANS

Whenever we wanted to look up anything for our class studies, we went to the library for reference. We felt lost when we entered the room filled with thousands of books but the librarians were on their feet ready to assist us as much as they could.

The library staff with Miss Ethel Manning as head librarian would make studies in any school smoother for the students.







# AUTOGRAPHS

IWAMOTO

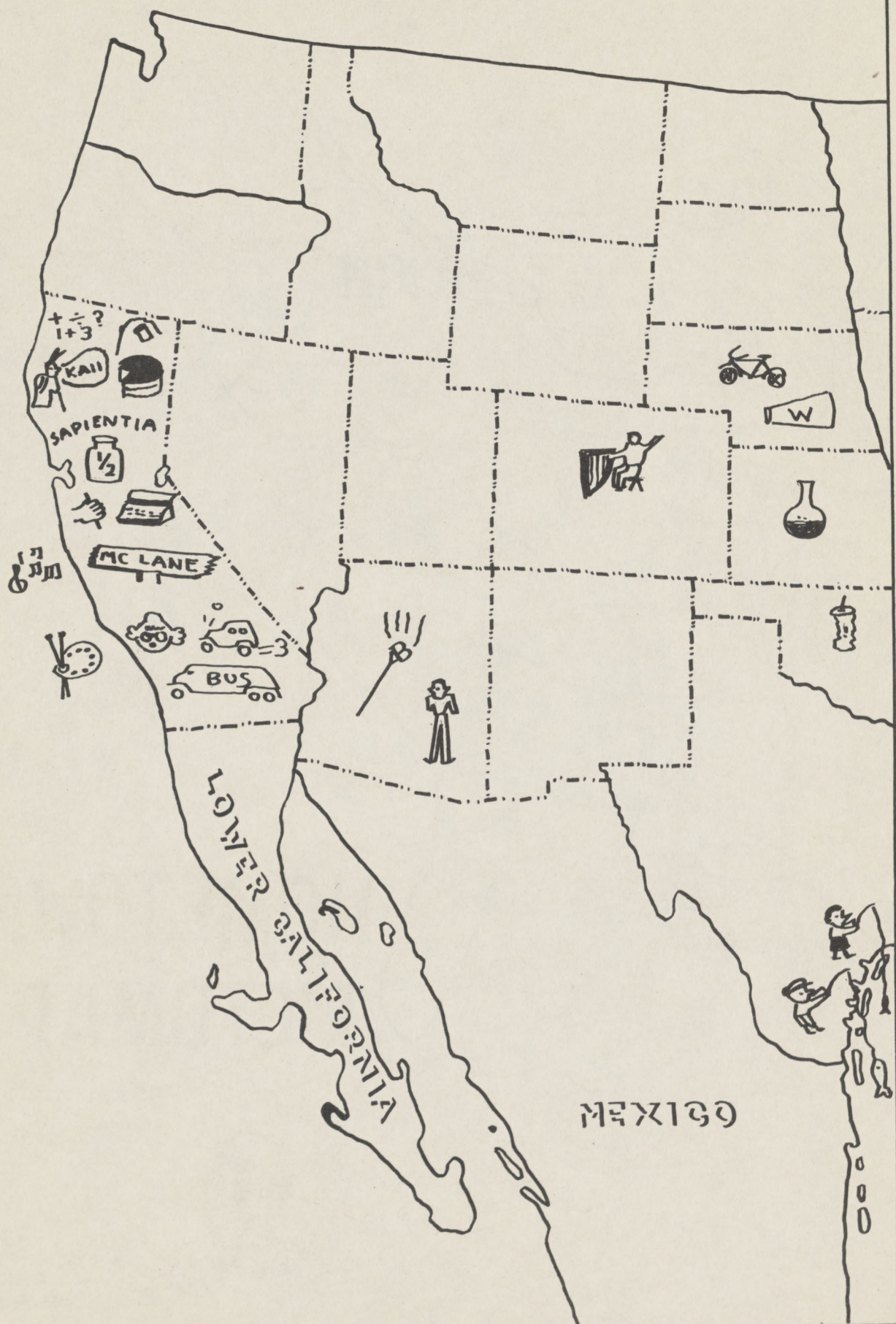


# FACULTY

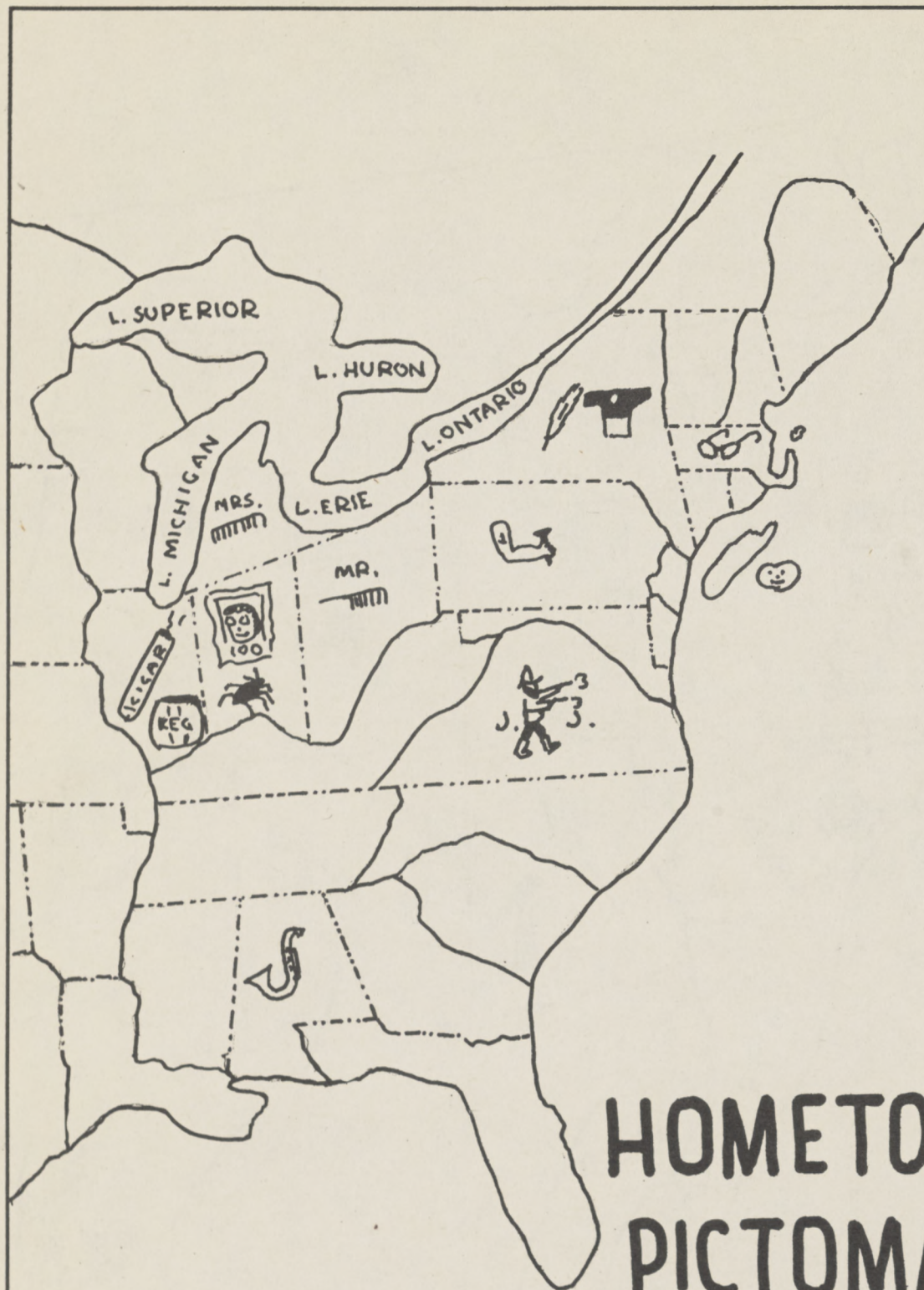


- MITSEY -









# HOMETOWN PICTOMAP



By  
AKIO  
IWAMOTO





**B. ARMSTRONG**

CORE 8  
LIBRARY SCIENCE



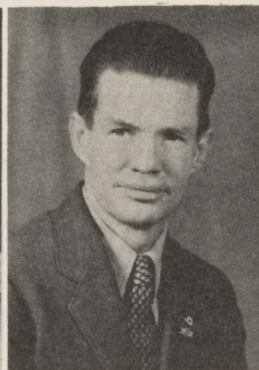
**E. BACKUS**

CORE 11  
ENGLISH COMPOSITION



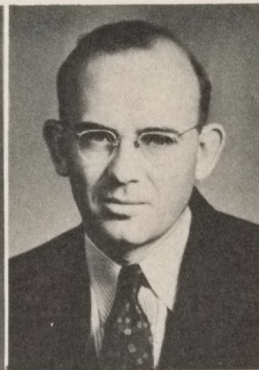
**O. BRAND**

CORE 7  
SPANISH



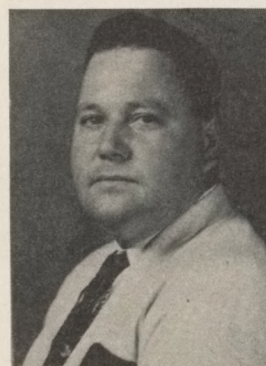
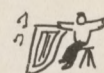
**A. BRANHAM**

WOODSHOP



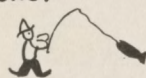
**R. DUGAN**

MUSIC



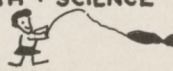
**A. FISHER**

AUTOSHOP



**M. FISHER**

HOME ECONOMICS  
HEALTH + SCIENCE



**H. HIRATA**

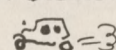
LATIN

SAPIENTIA



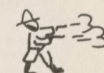
**E. JERNIGAN**

CORE 12  
JUNIOR BUSINESS



**M. JESSE**

CORE 7



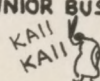
**N. KAIG**

CORE 9  
PHYSIOLOGY



**S. TANIMOTO**

TYPING  
JUNIOR BUSINESS



**D. LAPINSKAS**

CORE 10  
ANNUAL



**M. LONGFELLOW**

ART



**E. MASUDA**

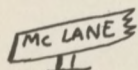
TYPING



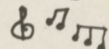




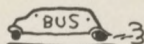
**Mc LANE**  
CORE 9



**H. MINAMI**  
ORCHESTRA  
GLEE CLUB



**R. MORAN**  
ARITHMETIC



**S. MORITA**  
SHORT HAND



**H. OKABE**  
HOME ECONOMICS



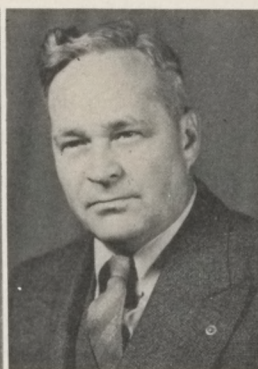
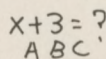
**L. PATTEN**  
BIOLOGY  
GEN. SCIENCE



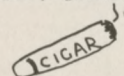
**S. SANDMEYER**  
CORE 12



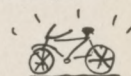
**B. SANEMATSU**  
GEOMETRY



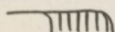
**R. SHAPLEY**  
MECH. DRAWING



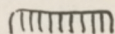
**E. STEINMEYER**  
ALGEBRA



**C. WHITCOMB**  
CORE 11  
HEALTH + SCIENCE



**V. WHITCOMB**  
CORE 10  
PHYSIOLOGY  
BIOLOGY



**M. WISEMAN**  
CORE 9  
JOURNALISM



**L. WURTZEL**  
SHORT HAND





**M. DENNIS**  
ARTS + CRAFT

**L. PENN**  
CORE 7

**T. SANEMATSU E. SNELSON**  
HOME ECONOMICS      SHORT HAND

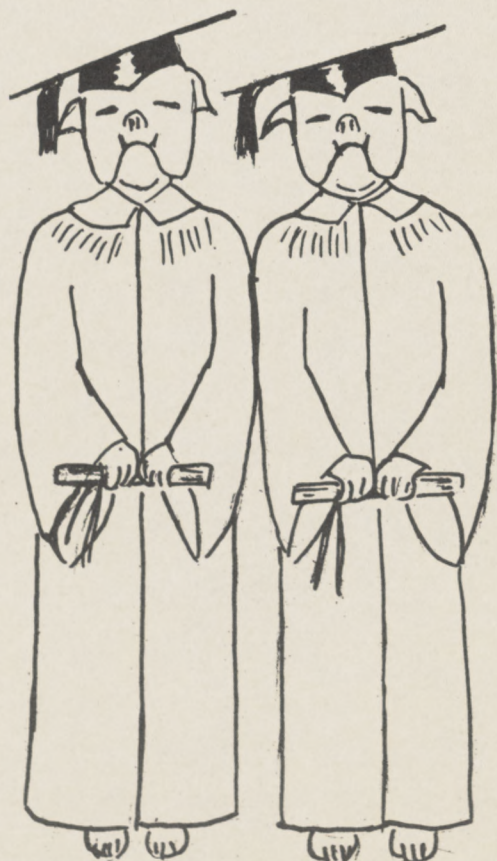
**L. TAYLOR**  
CORE II  
HEALTH + SCIENCE



## FACULTY SIGNATURES



# SENIORS



- MITSEY -





## SR. COUNCIL

Left to right, First Row: Takako Nakahara; Eleanor Kushida; Irene Noda; Iseko Nagato; Hiroko Nishida. Second Row: Mr. Sandmeyer; Thomas Koike; Richard Shindo; Shig Yamada; Tats Nagase; Miss Hirata.

"Aloha-oe.....The wind brings back that sad refrain-ain....."Swaying across the stage, moving their lithe hips in time with the music, came ten bee-oo-tiful girls led by Miss Richie Shindo. No, the scene wasn't on the shiny sands of Hawaii, but just the auditorium stage of Poston High School. The girls weren't girls, but just a rouged, skirted line of senior boys.

The scene was the first activity of the year for the seniors. Unfortunately, because the council was so busy preparing for the graduation of the class and ordering caps and gowns and sweaters, they could devote little time to other activities. The "Christmas Carol Inn" and the Senior Banquet were the only other activities they sponsored.

The Senior Class Council consisted of: President, Richard Shindo; Vice Prexy, Tats Nagase; Secretary, Eleanor Kushida; Treasurer, Shig Yamada; Publicity Manager, Irene Noda and Tom Koike; Historian, Hiroko Nishida; and Yell Leaders, Iseko Nagato and Kaz Kawanuma (Kaz was yell leader the first semester and Iseko the second).



AKIYAMA, CHIZUKO

MARYKNOLL HIGH SCHOOL  
LOS ANGELES, CALIFORNIA  
CORRESPONDENCE CLUB (3)  
COMMERCIAL CLUB  
HOME ECONOMICS (3)

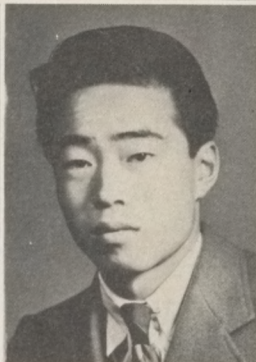


FUJITA, BETTY YOSHIKO

SALINAS UNION HIGH  
SCHOOL  
SANTA CRUZ, CALIFORNIA  
CORRESPONDENCE CLUB (3)  
COMMERCIAL CLUB (3)  
HOMEMAKING CLUB (3)

BABA, HARRY

RICHARD HENRY DANA  
JUNIOR HIGH SCHOOL  
TERMINAL ISLAND  
CALIFORNIA  
"C" BASKETBALL (3)  
ACS (3)  
LATIN (3)  
DEBATE (3)



FUKAWA, KOJI

LOMPOC UNION HIGH SCHOOL  
LOMPOC, CALIFORNIA

EMOTO, MAY

DELANO JOINT UNION  
HIGH SCHOOL  
DELANO, CALIFORNIA  
GAA (3)  
PEP CLUB (3)  
COMMERCIAL CLUB (3)

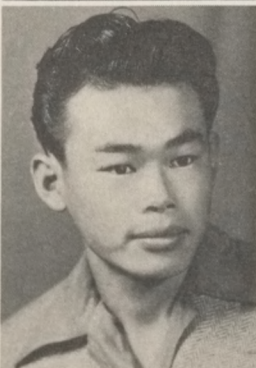
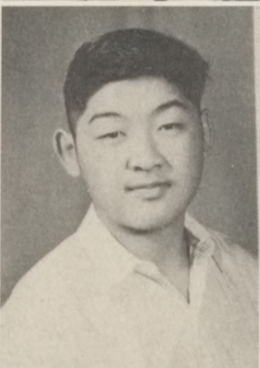


FUKAYE, LOUISE

HOLLENBECK JUNIOR HIGH  
SCHOOL  
LOS ANGELES, CALIFORNIA  
CORRESPONDENCE CLUB (3)  
HOMEMAKING CLUB (3)  
ANNUAL (4)

FUJIMOTO, AKIYOSHI

SAN DIEGUITO UNION  
HIGH SCHOOL  
ENCINATAS, CALIFORNIA

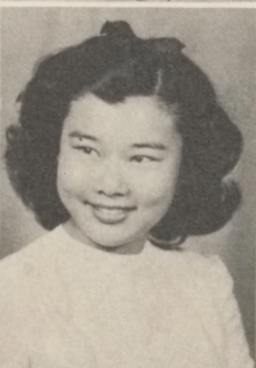
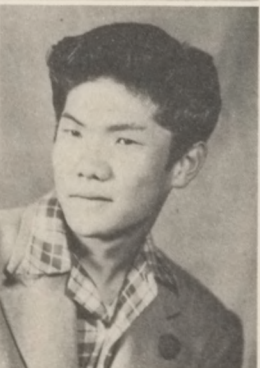


FUKUDA, GEORGE

ROOSEVELT HIGH SCHOOL  
LOS ANGELES, CALIFORNIA

FUJIMI, SHIG

SAN PEDRO HIGH SCHOOL  
SAN PEDRO, CALIFORNIA



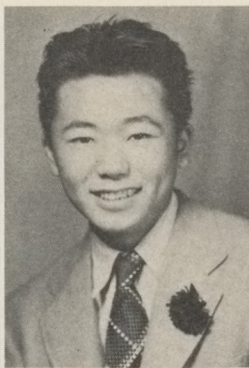
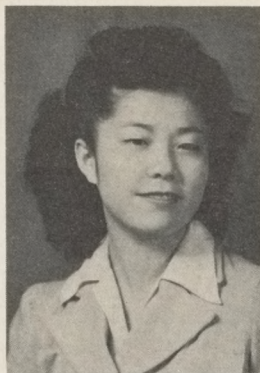
FUKUDA, TOMI

HOLLENBECK JUNIOR HIGH  
SCHOOL  
LOS ANGELES, CALIFORNIA  
TOP-HATTERS (3)  
LATIN CLUB (3)  
XI BETA SIGMA (4)  
GAA (3)  
SENIOR COUNCIL (4)  
SOPHOMORE CLASS  
SECRETARY (2)



**FUKUNAGA, ALICE**

WATSONVILLE HIGH SCHOOL  
WATSONVILLE, CALIFORNIA



**HIGASHI, KAZUHISA BOB**  
KERN COUNTY UNION  
HIGH SCHOOL  
TERMINAL ISLAND, CALIFORNIA  
ART CLUB (3)

**FURUKAWA, SHIRO**

SAN JOAQUIN  
LAGUNA BEACH, CALIFORNIA  
HI-Y (3)  
KAMPUS KRIER (4)

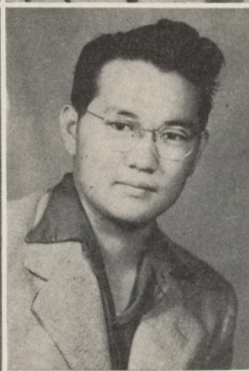


**HIGASHI, TAMIO**

SAN PEDRO HIGH SCHOOL  
SAN PEDRO, CALIFORNIA

**FURUYA, IRIS**

SAN DIEGUITO UNION  
HIGH SCHOOL  
SOLANA BEACH, CALIFORNIA  
CORRESPONDENCE CLUB (3)

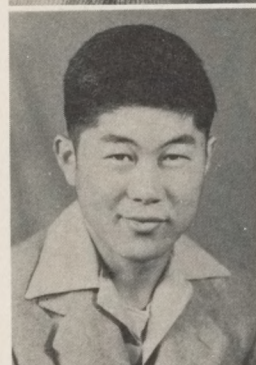


**HIRAEBARA, BOB TOSHIMI**

HOLLISTER HIGH SCHOOL  
HOLLISTER, CALIFORNIA

**GODA, SAM**

HUNTINGTON BEACH UNION  
HIGH SCHOOL  
HUNTINGTON BEACH, CALIFORNIA

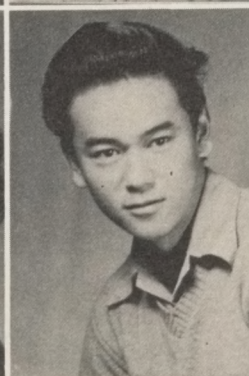


**HIRAOKA, ANTONY**

MARYKNOLL HIGH SCHOOL  
LOS ANGELES, CALIFORNIA

**HASHIMOTO, HARUKO**

BRAWLEY UNION HIGH SCHOOL  
BRAWLEY, CALIFORNIA



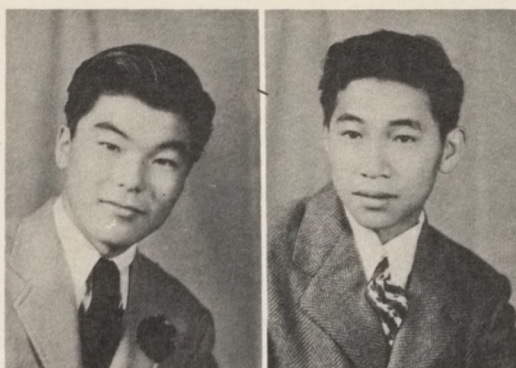
**HIRATA, AKIRA**

THOMAS STARE KING  
JUNIOR HIGH SCHOOL  
LOS ANGELES, CALIFORNIA  
FOOTBALL "C" (3)  
LETTERMAN'S (3)



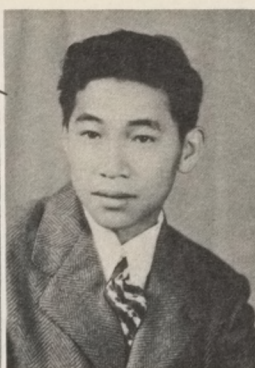
**HIROTO, WILLIAM**

RIVERSIDE POLYTECHNIC HIGH  
SCHOOL  
RIVERSIDE, CALIFORNIA  
A.S.B. BUSINESS MANAGER (3)  
OFFICE STAFF (4)



**HORIYE, BOB SHIZUO**

CENTRAL UNION HIGH SCHOOL  
EL CENTRO, CALIFORNIA  
LETTERMAN'S CLUB (3)  
FOOTBALL "B" (3)  
TRACK "B" (3, 4)



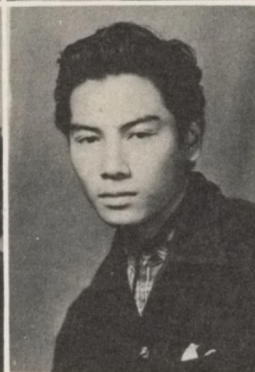
**HOKAMA, SETSUKO**

CALIPATRIA UNION HIGH  
SCHOOL  
NILAND, CALIFORNIA  
A.C.S. (3)  
CORRESPONDENCE CLUB (3)



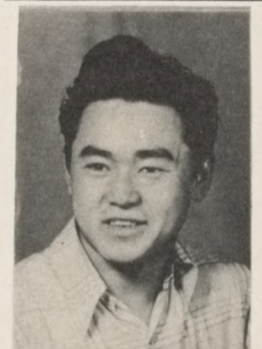
**HOSHINO, KAZUMI**

BERENDO JUNIOR HIGH  
SCHOOL  
LOS ANGELES, CALIFORNIA



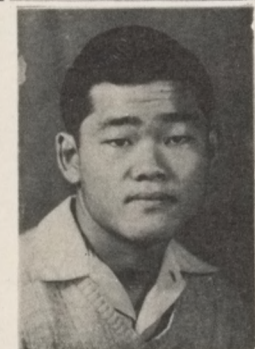
**HONDA, JACK YOSHIO**

OCEANSIDE CARLSBAD HIGH  
SCHOOL  
OCEANSIDE, CALIFORNIA  
ART (2)



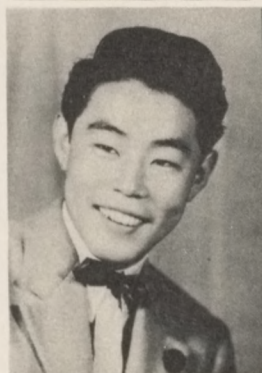
**IKEDA, JIMMY**

NEWPORT HARBOR UNION  
HIGH SCHOOL  
COSTA MESA, CALIFORNIA



**HORI FRANK**

SALINAS HIGH SCHOOL  
SALINAS, CALIFORNIA  
BASKETBALL "A" (3)  
TRACK "A" (3)  
FOOTBALL "A" (3)  
SOFTBALL "A" (3)  
ATHLETIC MANAGER (4)  
LETTERMAN'S CLUB (3)



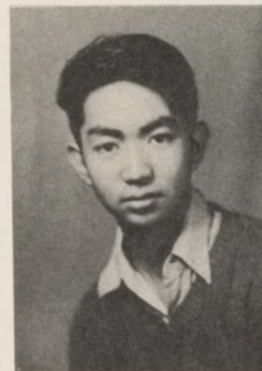
**IKEDA, KIYOKO**

NEWPORT HARBOR UNION  
HIGH SCHOOL  
COSTA MESA, CALIFORNIA



**HORIUCHI, TSUYOSHI**

SALINAS UNION HIGH SCHOOL  
SALINAS, CALIFORNIA



**IKUMA, KIKUE**

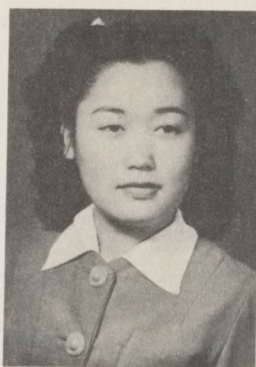
WATSONVILLE HIGH SCHOOL  
WATSONVILLE, CALIFORNIA  
G.A.A. (3, 4)





IMAMURA, BETTY

TUSTING UNION HIGH  
SCHOOL  
SANTA ANNA, CALIFORNIA  
HOMEMAKING (3)



ISHINO, HENRY

MEMORIAL JUNIOR HIGH  
SCHOOL  
SAN DIEGO, CALIFORNIA

INADA, SHIORI

OCEANSIDE CARLSBAD  
UNION HIGH SCHOOL  
GAA (3)  
COMMERCIAL (3)

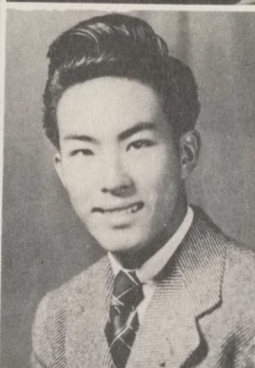
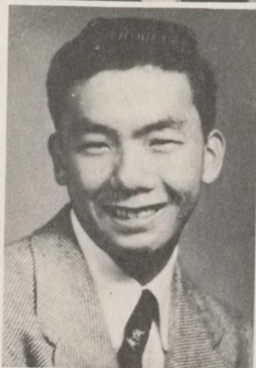


ITO, KAZUKO

FALLBROOK HIGH  
SCHOOL  
BONSALL, CALIFORNIA

INOUE, KEI

HUNTINGTON BEACH  
UNION HIGH SCHOOL  
ORANGE COUNTY,  
CALIFORNIA  
ART (3)  
KAMPUS KRIER EDITOR  
TRACK (3)

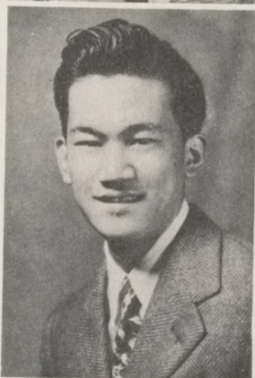


KAIL, SMILEY

ROBERT LOUIS STEVENSON  
JUNIOR HIGH SCHOOL  
LOS ANGELES, CALIFORNIA  
DEBATE

ISEDA, KHO

CHEMAVA JUNIOR HIGH  
SCHOOL  
RIVERSIDE, CALIFORNIA

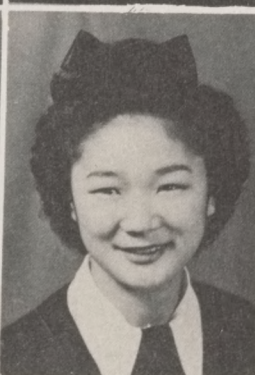


KAMEO, RIMA

WATSONVILL UNION  
HIGH SCHOOL  
WATSONVILL,  
CALIFORNIA  
COMMERCIAL CLUB (3)  
HONOR SOCIETY (3)

ISHIDA, TOSHIKO

PERRIS UNION HIGH  
SCHOOL  
PERRIS, CALIFORNIA



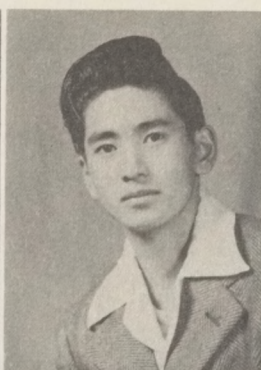
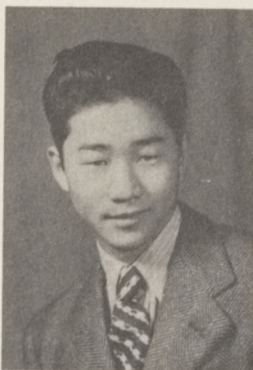
KARIYA, KIYOKO

FULLERTON UNION  
HIGH SCHOOL  
BUENA PARK, CALIFORNIA  
CORRESPONDENCE CLUB



**KATO, EDWARD**

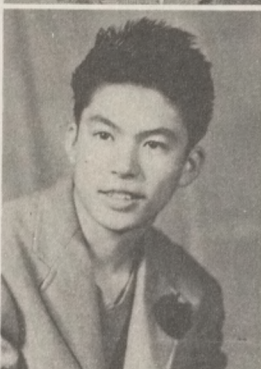
CENTRAL UNION HIGH SCHOOL  
EL CENTRO, CALIFORNIA  
TRACK "B" (3)

**KINOSHITA, KEIGI**

VISTA UNIFIED HIGH SCHOOL  
VISTA, CALIFORNIA

**KATO, SACHIYE**

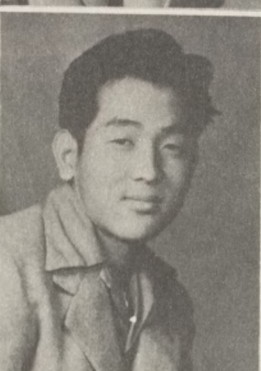
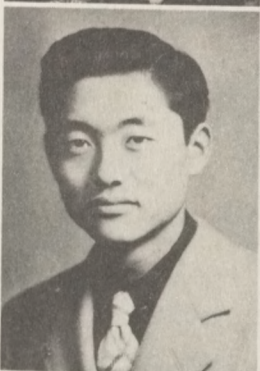
NEWPORT HARBOR UNION -  
HIGH SCHOOL  
NEWPORT BEACH, CALIFORNIA  
G.A.A. (3)

**KISHABA, HARRY**

CALEXICO UNION HIGH SCHOOL  
CALEXICO, CALIFORNIA  
ART CLUB (3)

**KAWANAMI, SHIGERU**

ROCKWOOD SCHOOL  
CALEXICO, CALIFORNIA  
HONOR SOCIETY (2+3)  
EL DORADO (2)  
XI BETA SIGMA (3)  
KAMPUS KRIER (4)

**KODAMA, OSCAR**

IMPERIAL HIGH SCHOOL  
EL CENTRO, CALIFORNIA

**KAWANUMA, KAZU**

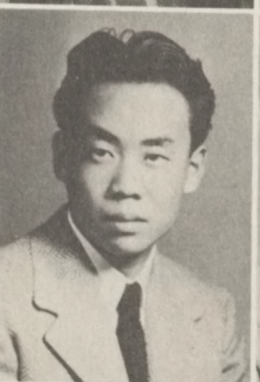
DELANO JUNIOR HIGH SCHOOL  
DELANO, CALIFORNIA  
G.A.A. (3)  
ANNUAL (3)  
PEP CLUB (3)

**KOHATSU, MITSUKO**

BRAWLEY UNION HIGH SCHOOL  
BRAWLEY, CALIFORNIA  
HONOR SOCIETY (3+4)  
XI BETA SIGMA (3+4)  
COMMERCIAL CLUB (3)

**KINOSHITA, BEN**

KERN COUNTY UNION HIGH SCHOOL  
BAKERSFIELD, CALIFORNIA

**KOIKE, THOMAS**

WATSONVILLE JUNIOR HIGH -  
SCHOOL  
WATSONVILLE, CALIFORNIA  
FOOTBALL (3)  
LETTERMAN'S CLUB (3)

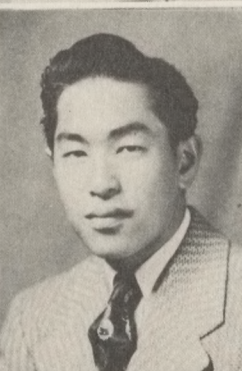


K OJIMA, HARUE  
GARDEN GROVE UNION  
HIGH SCHOOL  
GARDEN GROVE, CALIFORNIA



KUWAHARA, SET SUKO  
TAFT UNION HIGH SCHOOL  
FELLOWS, CALIFORNIA

KOMATSU, KOKO  
CENTRAL UNION HIGH  
SCHOOL  
EL CENTRO, CALIFORNIA  
KAMPUS KRIER (4)  
GIRLS LEAGUE (3)  
HOMEMAKING CLUB (3)



MARUYAMA, MAMORU  
GARDEN GROVE UNION  
HIGH SCHOOL  
GARDEN GROVE, CALIFORNIA  
FOOTBALL (4)

KONDO, MAKIKO  
SALINAS UNION HIGH SCHOOL  
SALINAS, CALIFORNIA  
COMMERCIAL CLUB (3)  
CORRESPONDENCE CLUB (3)  
HOMEMAKING CLUB (3)



MASUTANI, YUKIE  
CENTRAL UNION HIGH  
SCHOOL  
EL CENTRO, CALIFORNIA  
EL DORADO (3)

KOSAKA, GEORGE  
GARDEN GROVE UNION  
HIGH SCHOOL  
SANTA ANA, CALIFORNIA



MATSUBARA, SHOJI  
ANTELOPE VALLEY JOINT  
UNION HIGH SCHOOL  
LANCASTER, CALIFORNIA  
FOOTBALL (3)  
HONOR SOCIETY (3)  
LETTERMAN'S CLUB (3)

KUSHIDA, ELEANOR  
HOLLENBECK JUNIOR HIGH  
SCHOOL  
LOS ANGELES, CALIFORNIA  
G.A.A. (3 & 4)  
SENIOR CLASS SECRETARY (4)  
TRI-Y (3)  
DRAMATICS (3)  
NATIONAL HONOR SOCIETY (3)  
GIRLS LEAGUE (4)  
Xi BETA SIGMA (4)



MATSUMOTO, EMIKO  
GLENDALE HIGH SCHOOL  
GLENDALE, ARIZONA  
G.A.A. (3)  
KAMPUS KRIER (4)  
XI BETA SIGMA  
PRESS CLUB (3)  
A.C.S. (3 & 4)

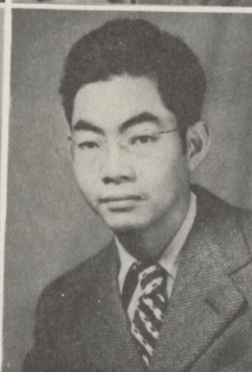
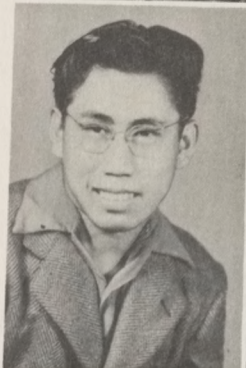


**MATSUNO, SHIGEKO**  
CENTRAL UNION  
HIGH SCHOOL  
EL CENTRO, CALIFORNIA



**MIYAMURA, HIROSHI**  
MISSION HIGH JUNIOR  
HIGH SCHOOL  
SANTA CRUZ,  
CALIFORNIA  
FOOTBALL (3)

**MAYEDA, CHARLES**  
DELANO JOINT UNION  
HIGH SCHOOL  
DELANO, CALIFORNIA  
BASEBALL "B" (3)  
BASKETBALL "B" (3)  
FOOTBALL "B" (3)



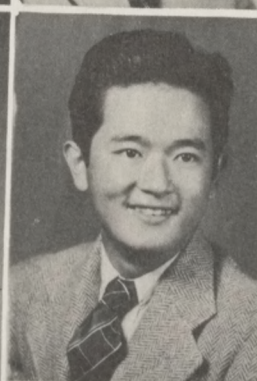
**MIYATA, JOHN**  
CENTRAL UNION  
HIGH SCHOOL  
EL CENTRO, CALIFORNIA  
XI BETA SIGMA (4)

**MIYADA, RUTH TERUKO**  
NEWPORT HARBOR  
UNION HIGH SCHOOL  
CORONA DEL MAR,  
CALIFORNIA  
GIRLS RESERVES (3)  
G.A.A. (3)  
COMMERCIAL CLUB (3)  
HOME MAKING (2, 3)  
MATH CLUB (2)



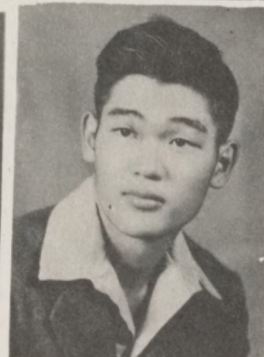
**MORI, SUSUMU**  
HOLT VILLE UNION  
HIGH SCHOOL  
HOLTVILLE, CALIFORNIA

**MIYAKE, HENRY**  
SANTA MARIA UNION  
HIGH SCHOOL  
GUADALUPE,  
CALIFORNIA



**MUKAI, MASATO**  
SALINAS UNION HIGH  
SCHOOL  
SALINAS, CALIFORNIA  
NATIONAL HONOR  
SOCIETY (3, 4)  
RED CROSS COUNCIL (4)  
KAMPUS KRIER STAFF (4)

**MIYAMOTO, TOSHIYE**  
MEMORIAL JUNIOR  
HIGH SCHOOL  
SAN DIEGO, CALIFORNIA  
GLEE CLUB (2, 3)  
DRAMATICS (3)

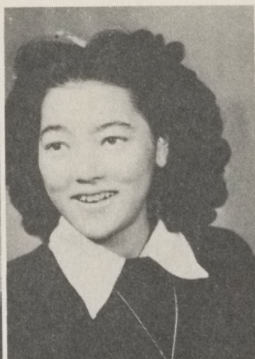


**MURAKAMI, MASARU**  
BELVEDERE JUNIOR  
HIGH SCHOOL  
LOS ANGELES,  
CALIFORNIA  
HONOR SOCIETY (3, 4)  
HONOR SOCIETY PRESIDENT  
(4)  
DEBATE (3)  
EL DORADO VICE PRESIDENT  
(3)  
SENIOR CLASS TREASURER  
(4)



**MURAMOTO, MASAMI**

CHEMAVA JUNIOR HIGH  
SCHOOL  
RIVERSIDE, CALIFORNIA  
ANNUAL ART EDITOR (3)

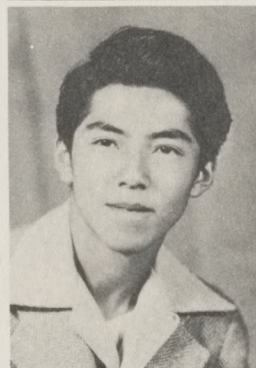


**NAGATA, MARY**

CAPISTRANO UNION HIGH  
SCHOOL  
SAN JUAN CAPISTRANO,  
CALIFORNIA  
LATIN CLUB (3)  
DRAMATICS (3)  
GAA (3+4)  
GIRL'S LEAGUE (4)  
BOOK CLUB (3)  
TRI-Y (3)  
XI BETA SIGMA (4)

**MURASE, TAK**

HOLLENBECK JUNIOR  
HIGH SCHOOL  
LOS ANGELES, CALIFORNIA  
FOOTBALL "C" (3)  
TRACK (3)  
LETTERMAN'S CLUB (3)

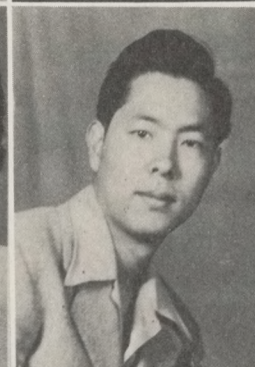


**NAGATO, ISEKO**

BRAWLEY UNION HIGH  
SCHOOL  
BRAWLEY, CALIFORNIA  
SENIOR YELL LEADER (4)

**NAGAREDA, EMMY**

GILROY UNION HIGH  
SCHOOL  
GILROY, CALIFORNIA  
KAMPUS KRIER (3)



**NAKAHARA, JACK**

CENTRAL UNION HIGH  
SCHOOL  
EL CENTRO, CALIFORNIA  
ASB ATHLETIC MANAGER (3)  
ASB PRESIDENT (4)  
JUNIOR VICE PRESIDENT (3)

**NAGASAKI, TERUKO**

SALINAS UNION HIGH  
SCHOOL  
SALINAS, CALIFORNIA  
EL DORADO (3)

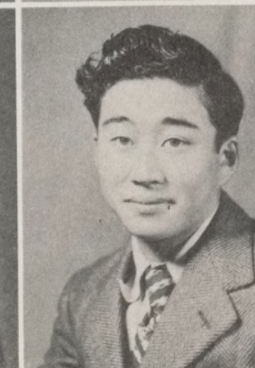


**NAKAHARA, TAKAKO**

TAFT UNION HIGH SCHOOL  
TAFT, CALIFORNIA  
HONOR SOCIETY (3+4)  
CORRESPONDENCE CLUB (3)  
XI BETA SIGMA (4)  
KAMPUS KRIER (3+4)  
PRESS CLUB (3)

**NAGASE HAROLD TATS**

SANTA ROSA HIGH  
SCHOOL  
SANTA ROSA, CALIFORNIA  
LATIN CLUB (3)  
LETTERMAN'S CLUB (3)  
BASKETBALL "C" (3)  
TRACK (3)  
SENIOR VICE PRESIDENT (4)



**NAKAMURA, LEO**

SAN LUIS JUNIOR HIGH  
SCHOOL  
SAN LUIS OBISPO,  
CALIFORNIA  
ANNUAL (4)



**NAKAMURA, JAMES**

OCEANSIDE - CARLSBAD  
UNION HIGH SCHOOL  
OCEANSIDE, CALIFORNIA

**NAKANO, JACK**

SALINAS UNION HIGH  
SCHOOL  
SALINAS, CALIFORNIA

**NAKAMURA, SANAMI**

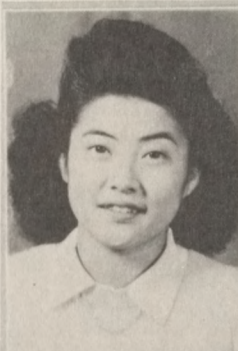
CENTRAL UNION HIGH  
SCHOOL  
EL CENTRO, CALIFORNIA  
EL DORADO (3)

**NAKASHIMA, YOSHITO**

FULLERTON UNION HIGH  
SCHOOL  
DOWNEY, CALIFORNIA

**NAKAMOTO, AIKO**

KERN COUNTY UNION  
HIGH SCHOOL  
BAKERSFIELD, CALIFORNIA  
GAA (3)  
GIRL RESERVES (3)  
TRI-Y (3)

**NINOMIYA, MOLLY**

SAN BENITO COUNTY  
HIGH SCHOOL  
SAN JUAN BAUTISTA,  
CALIFORNIA  
HOMEMAKING CLUB (3)  
CORRESPONDENCE CLUB (3)

**NAKANISHI, MAY**

DELANO JOINT UNION  
HIGH SCHOOL  
DELANO, CALIFORNIA  
HONOR SOCIETY (3+4)  
LATIN CLUB (3)  
XI BETA SIGMA (4)

**NISHIDA, HIROKO**

CENTRAL UNION HIGH  
SCHOOL  
EL CENTRO, CALIFORNIA  
ART CLUB (3)  
HONOR SOCIETY (3+4)  
SENIOR HISTORIAN (4)  
RED CROSS COUNCIL (4)

**NAKANO, FRANCES**

OCEANSIDE - CARLSBAD  
UNION HIGH SCHOOL  
OCEANSIDE, CALIFORNIA  
GAA (3)  
ORCHESTRA (4)  
GLEE CLUB (4)

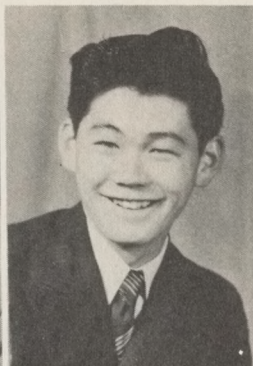
**NISHIJIMA, LILLIAN**

ARROYO GRANDE UNION  
HIGH SCHOOL  
PISMO BEACH, CALIFORNIA  
HOME MAKING CLUB (3)



**NISHIMURA, YOSHI**

KERN COUNTY UNION HIGH SCHOOL  
BAKERSFIELD, CALIFORNIA  
JR. CLASS YELL LEADER (3)  
VICE PRESIDENT A.S.B. (4)  
KAMPUS KRIER (4)

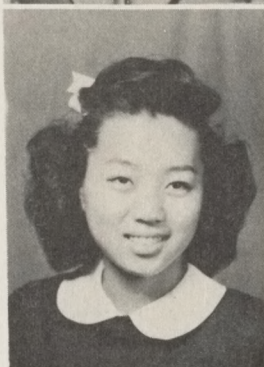


**NOGUCHI, SHIGERU**

OCEANSIDE-CARLSBAD UNION HIGH -  
SCHOOL.  
OCEANSIDE, CALIFORNIA

**NISHIOKA, FRANCES**

BELVEDERE JUNIOR HIGH SCHOOL  
LOS ANGELES, CALIFORNIA  
G.A.A. (3+4)  
TRI-Y (3)  
COMMERCIAL CLUB (3)  
A.S.B. RECORDING SECRETARY (4)



**NOMURA, KUNIYE**

NORTH PHOENIX HIGH SCHOOL  
PHOENIX, ARIZONA  
G.A.A. (3)  
ANNUAL (4)

**NISHITA, SATORU**

HOLLISTER HIGH SCHOOL  
SAN JUAN BAUTISTA, CALIFORNIA  
AIRPLANE CLUB (3)

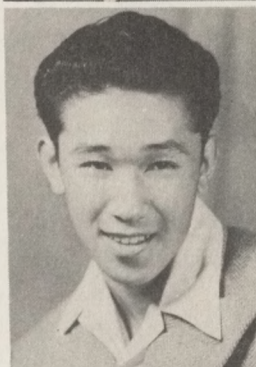


**NORITAKE, TOSHIYUKI**

ROOSEVELT HIGH SCHOOL  
LOS ANGELES, CALIFORNIA

**NOBUTO, MASARU**

HOLLENBECK JUNIOR HIGH SCHOOL  
LOS ANGELES, CALIFORNIA  
FOOTBALL "C" (3)



**ODA, MASAYO**

CHAFFEY UNION HIGH SCHOOL  
UPLAND, CALIFORNIA  
CORRESPONDENCE CLUB (3)

**NODA, IRENE**

HOLLENBECK JUNIOR HIGH SCHOOL  
LOS ANGELES, CALIFORNIA  
G.A.A. (3+4)  
GIRL RESERVES (3)  
SENIOR PUBLICITY MANAGER (4)



**OGATA, TEIKO**

DELANO HIGH SCHOOL  
DELANO, CALIFORNIA  
HONOR SOCIETY (3+4)



**NAKAMURA, JAMES**

OCEANSIDE - CARLSBAD  
UNION HIGH SCHOOL  
OCEANSIDE, CALIFORNIA

**NAKANO, JACK**

SALINAS UNION HIGH  
SCHOOL  
SALINAS, CALIFORNIA

**NAKAMURA, SANAMI**

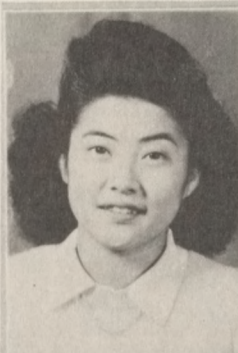
CENTRAL UNION HIGH  
SCHOOL  
EL CENTRO, CALIFORNIA  
EL DORADO (3)

**NAKASHIMA, YOSHITO**

FULLERTON UNION HIGH  
SCHOOL  
DOWNEY, CALIFORNIA

**NAKAMOTO, AIKO**

KERN COUNTY UNION  
HIGH SCHOOL  
BAKERSFIELD, CALIFORNIA  
GAA (3)  
GIRL RESERVES (3)  
TRI-Y (3)

**NINOMIYA, MOLLY**

SAN BENITO COUNTY  
HIGH SCHOOL  
SAN JUAN BAUTISTA,  
CALIFORNIA  
HOMEMAKING CLUB (3)  
CORRESPONDENCE CLUB (3)

**NAKANISHI, MAY**

DELANO JOINT UNION  
HIGH SCHOOL  
DELANO, CALIFORNIA  
HONOR SOCIETY (3+4)  
LATIN CLUB (3)  
XI BETA SIGMA (4)

**NISHIDA, HIROKO**

CENTRAL UNION HIGH  
SCHOOL  
EL CENTRO, CALIFORNIA  
ART CLUB (3)  
HONOR SOCIETY (3+4)  
SENIOR HISTORIAN (4)  
RED CROSS COUNCIL (4)

**NAKANO, FRANCES**

OCEANSIDE - CARLSBAD  
UNION HIGH SCHOOL  
OCEANSIDE, CALIFORNIA  
GAA (3)  
ORCHESTRA (4)  
GLEE CLUB (4)

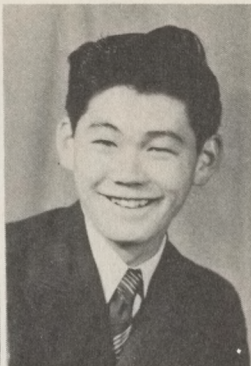
**NISHIJIMA, LILLIAN**

ARROYO GRANDE UNION  
HIGH SCHOOL  
PISMO BEACH, CALIFORNIA  
HOMEMAKING CLUB (3)



**NISHIMURA, YOSHI**

KERN COUNTY UNION HIGH SCHOOL  
BAKERSFIELD, CALIFORNIA  
JR. CLASS YELL LEADER (3)  
VICE PRESIDENT A.S.B. (4)  
KAMPUS KRIER (4)

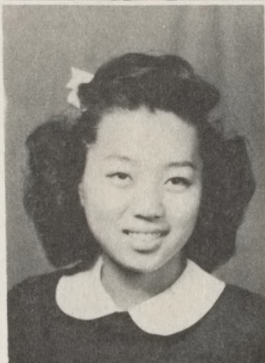


**NOGUCHI, SHIGERU**

OCEANSIDE-CARLSBAD UNION HIGH -  
SCHOOL.  
OCEANSIDE, CALIFORNIA

**NISHIOKA, FRANCES**

BELVEDERE JUNIOR HIGH SCHOOL  
LOS ANGELES, CALIFORNIA  
G.A.A. (3+4)  
TRI-Y (3)  
COMMERCIAL CLUB (3)  
A.S.B. RECORDING SECRETARY (4)



**NOMURA, KUNIYE**

NORTH PHOENIX HIGH SCHOOL  
PHOENIX, ARIZONA  
G.A.A. (3)  
ANNUAL (4)

**NISHITA, SATORU**

HOLLISTER HIGH SCHOOL  
SAN JUAN BAUTISTA, CALIFORNIA  
AIRPLANE CLUB (3)



**NORITAKE, TOSHIYUKI**

ROOSEVELT HIGH SCHOOL  
LOS ANGELES, CALIFORNIA

**NOBUTO, MASARU**

HOLLENBECK JUNIOR HIGH SCHOOL  
LOS ANGELES, CALIFORNIA  
FOOTBALL "C" (3)



**ODA, MASAYO**

CHAFFEY UNION HIGH SCHOOL  
UPLAND, CALIFORNIA  
CORRESPONDENCE CLUB (3)

**NODA, IRENE**

HOLLENBECK JUNIOR HIGH SCHOOL  
LOS ANGELES, CALIFORNIA  
G.A.A. (3+4)  
GIRL RESERVES (3)  
SENIOR PUBLICITY MANAGER (4)



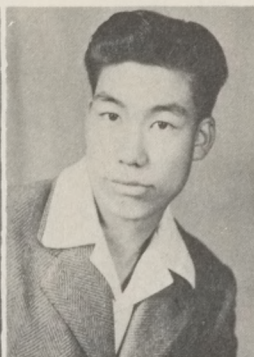
**OGATA, TEIKO**

DELANO HIGH SCHOOL  
DELANO, CALIFORNIA  
HONOR SOCIETY (3+4)



**OGURA, SHIYUKO**

SAN PEDRO HIGH SCHOOL  
 SAN PEDRO, CALIFORNIA  
 CORRESPONDENCE CLUB (3)  
 COMMERCIAL CLUB (3)  
 HOMEMAKING CLUB (3)

**ONO, JOE**

KERN COUNTY UNION HIGH  
 SCHOOL  
 BAKERSFIELD, CALIFORNIA  
 FOOTBALL (3+4)

**OHTA, ROY**

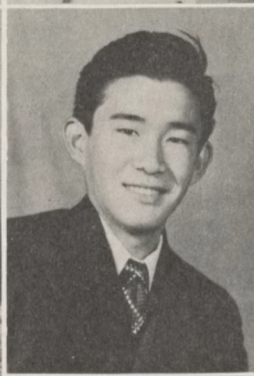
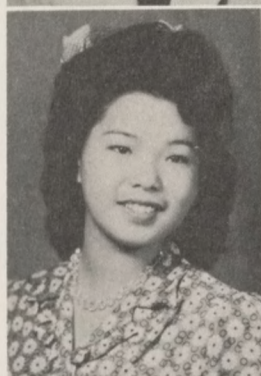
CENTRAL UNION HIGH  
 SCHOOL  
 EL CENTRO, CALIFORNIA

**ONO, MAY**

ROBERT LOUIS STEVENSON  
 JUNIOR HIGH SCHOOL  
 LOS ANGELES, CALIFORNIA  
 COMMERCIAL CLUB (3)  
 A. C. S. (3+4)  
 CORRESPONDENCE CLUB (3)  
 XI BETA SIGMA (4)

**OHYE, MITSEY MICHIKO**

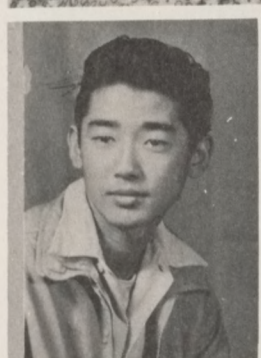
HOLLENBECK JUNIOR  
 HIGH SCHOOL  
 LOS ANGELES, CALIFORNIA  
 DRAMATIC CLUB (3)  
 CORRESPONDENCE CLUB (3)  
 G.A.A. (3+4)  
 ANNUAL (4)

**OTSU, JITSUO**

GARDEN GROVE UNION  
 HIGH SCHOOL  
 SANTA ANA, CALIFORNIA

**OKAMOTO, FRANK**

LANTHROP JUNIOR HIGH  
 SCHOOL  
 SANTA ANA, CALIFORNIA

**SAKAKI, JEANNE**

MARYKNOLL  
 LOS ANGELES, CALIFORNIA  
 TRI-Y (3)

**OKITA, HELEN**

HOLLISTER HIGH SCHOOL  
 HOLLISTER, CALIFORNIA

**SAKAMOTO, AYAKO**

KERN COUNTY UNION HIGH  
 SCHOOL  
 BAKERSFIELD, CALIFORNIA  
 TRI-Y CO-ED (3)  
 G.A.A. (3+4)  
 EL DORADO (3)  
 XI BETA SIGMA (4)  
 NATIONAL HONOR SOCIETY (3)



## SAKAMOTO, HIROKO

ROBERT LOUIS STEVENSON JUNIOR -  
HIGH SCHOOL.

LOS ANGELES, CALIFORNIA

LATIN CLUB (3)

PI SIGMA (3)

FORUM DEBATE (3+4)

XI BETA SIGMA (4)



## SEKI, SHIZUKO

CALIPATRIA UNION HIGH SCHOOL  
NILAND, CALIFORNIA

## SAKAYE, LINDA SHIZUYE

STOCKTON HIGH SCHOOL

STOCKTON, CALIFORNIA

TRI-Y (3)

HOMEMAKING CLUB (3)



## SEKO, MISAO AYAKO

SAN PEDRO HIGH SCHOOL

SAN PEDRO, CALIFORNIA

COMMERCIAL CLUB (3)

HOMEMAKING CLUB (3)

CORRESPONDENCE CLUB (3)

## SAKUDA, NANCY SHICEKO

SAN BENITO COUNTY HIGH SCHOOL

SAN JUAN BAUTISTA, CALIFORNIA

STAMP CLUB (3)

TRI-Y (3)



## SETSUDA, HIDEO

ROBERT LOUIS STEVENSON -  
JUNIOR HIGH SCHOOL.  
LOS ANGELES, CALIFORNIA

## SASE, ROSE

BRAWLEY UNION HIGH SCHOOL

BRAWLEY, CALIFORNIA

HOMEMAKING CLUB (3)

HONOR SOCIETY (3)

G.A.A. (3)



## SHIBATA, TADASHI

ROOSEVELT HIGH SCHOOL

TERMINAL ISLAND, CALIFORNIA

FOOTBALL (3)

## SASAKI, FRED

BRAWLEY UNION HIGH SCHOOL

BRAWLEY, CALIFORNIA



## SHINDO, RICHARD

ROBERT LOUIS STEVENSON -  
JUNIOR HIGH SCHOOL.

LOS ANGELES, CALIFORNIA

BASKETBALL "C" (3)

LETTERMANS CLUB (3)

FOOTBALL "C" (3)

SENIOR PRESIDENT (4)



**SUGIMOTO, TAKEO**

OCEANSIDE-CARLSBAD UNION HIGH-  
SCHOOL.

OCEANSIDE, CALIFORNIA

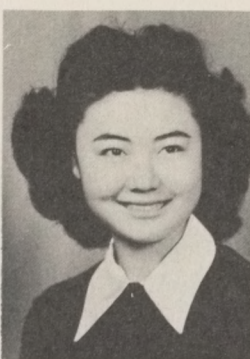
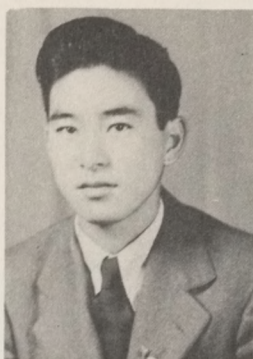
HI-Y (3)

SCIENCE CLUB (3)

RED CROSS COUNCIL (3)

XI BETA SIGMA (4)

BASEBALL (2)

**TAKAHASHI, PAULINE**

ROBERT LOUIS STEVENSON JUNIOR-  
HIGH SCHOOL.

LOS ANGELES, CALIFORNIA

LATIN CLUB (3)

HONOR SOCIETY (3+4)

DRAMATICS (3)

XI BETA SIGMA (4)

**SUGIMURA, EMI**

SACRAMENTO SENIOR HIGH SCHOOL

SACRAMENTO, CALIFORNIA

COMMERCIAL CLUB (3)

**TAKANABE, MARY**

CHAFFEY UNION HIGH SCHOOL

ONTARIO, CALIFORNIA

TRI-Y (3)

**SUNAGO, MIYO**

RICHARD HENRY DANA JUNIOR -  
HIGH SCHOOL.

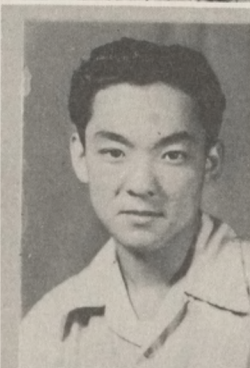
TERMINAL ISLAND, CALIFORNIA

TRI-Y (3)

G.A.A. (3+4)

GIRLS LEAGUE (4)

A.S.B. TREASURER (3)

**TAKATA, TOM**

WATSONVILLE HIGH SCHOOL

WATSONVILLE, CALIFORNIA

**SUZUWA, MARY**

VISTA HIGH SCHOOL

VISTA, CALIFORNIA

**TAKII, EDITH**

HOLTVILLE UNION HIGH SCHOOL

HOLTVILLE, CALIFORNIA

CORRESPONDENCE CLUB (3)

G.A.A. (3)

HOMEMAKING CLUB (3)

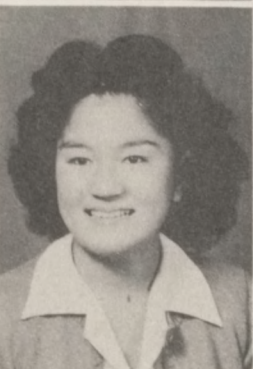
**TAIRA, MARY**

BRAWLEY UNION HIGH SCHOOL

BRAWLEY, CALIFORNIA

A.C.S. (3)

HOMEMAKING (3)

**TAMURA, AKIKO**

KERN COUNTY UNION HIGH SCHOOL

BAKERSFIELD, CALIFORNIA



### TAMURA, FLORENCE

CENTRAL UNION HIGH SCHOOL  
EL CENTRO, CALIFORNIA  
CORRESPONDENCE CLUB (3)

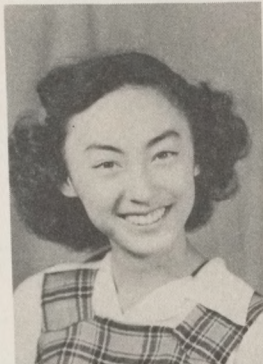


### TATSUMI, BEN

FULLERTON JUNIOR HIGH SCHOOL  
BUENA PARK, CALIFORNIA

### TANAKA, SACHIKO

HOLLENBECK JUNIOR HIGH SCHOOL  
LOS ANGELES, CALIFORNIA  
HONOR SOCIETY (3+4)  
EL DORADO (3)  
PI SIGMA (3)  
XI BETA SIGMA (4)  
DEBATE (3)

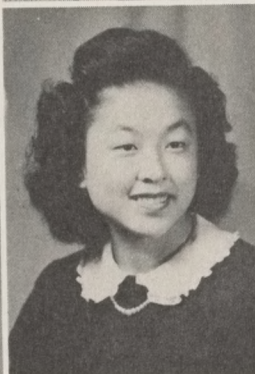
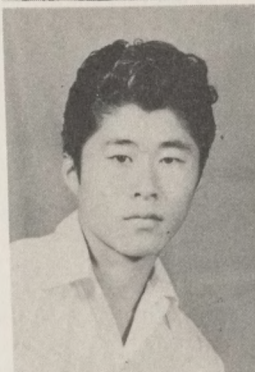


### TAWA, KEN

HOLLENBECK JUNIOR HIGH SCHOOL  
LOS ANGELES, CALIFORNIA  
LATIN CLUB (3)

### TANAKA, TAMOTSU TOM

OCEANSIDE CARLSBAD UNION -  
HIGH SCHOOL.  
OCEANSIDE, CALIFORNIA  
BASKETBALL "C" (3)  
LETTERMANS CLUB (3)



### TORIMARU, YURIKO

SAN DIEGUITO UNION HIGH SCHOOL  
ENCINITAS, CALIFORNIA  
SOPHOMORE COUNCIL (2)  
G.A.A. (3)  
COMMERCIAL CLUB (3)  
TRI-Y (3)  
JUNIOR COUNCIL (3)  
DRAMATICS (3)

### TANIGUCHI, TSURUE

SALINAS HIGH SCHOOL  
SALINAS, CALIFORNIA  
HONOR SOCIETY (3+4)  
EL DORADO (3)  
KAMPUS KRIER (3)  
DEBATE (3)  
XI BETA SIGMA



### TOYOSAKI, FUSAKO

RICHARD HENRY DANA JUNIOR -  
HIGH SCHOOL.  
TERMINAL ISLAND, CALIFORNIA  
HOMEMAKING (3)

### TATEISHI, FUMIKO

SAN DIEGUITO UNION HIGH SCHOOL  
DEL MAR, CALIFORNIA  
COMMERCIAL CLUB (3)  
HONOR SOCIETY (3)



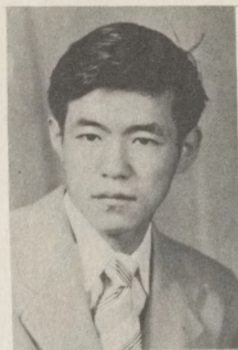
### TSUCHIMORI, KAZUYE

HOLLENBECK JUNIOR HIGH SCHOOL  
LOS ANGELES, CALIFORNIA  
G.A.A. (3)  
TRI-Y (3)  
DRAMATICS (3)  
GIRLS LEAGUE (4)



**TSUCHIMOTO, YOSHIAKI**

SANTA MARIA UNION HIGH SCHOOL  
GUADALUPE, CALIFORNIA  
ANNUAL (3)



**UKEGAWA, JOE**

TUSTIN UNION HIGH SCHOOL  
IRVIN, CALIFORNIA  
FOOTBALL (4)  
TRACK "A" (3)

**TSUCHIYAMA, KAZUMI**

IMPERIAL HIGH SCHOOL  
EL CENTRO, CALIFORNIA  
C.A.A. (3)  
KAMPUS KRIER



**UYENO, ALLEN**

BRAWLEY UNION HIGH SCHOOL  
BRAWLEY, CALIFORNIA

**TSUCHIYAMA, SHICEKO**

WATSONVILLE UNION HIGH SCHOOL  
WATSONVILLE, CALIFORNIA  
C.A.A. (3+4)



**UYENO, DOROTHY**

HOLLISTER HIGH SCHOOL  
HOLLISTER, CALIFORNIA

**TSUJI, MARY**

HOLTVILLE UNION HIGH SCHOOL  
HOLTVILLE, CALIFORNIA  
C.A.A. (3)  
KAMPUS KRIER (3)



**WADA, HENRY**

REDLAND UNION HIGH SCHOOL  
REDLAND, CALIFORNIA

**UEKI, WILLIAM**

SAN BENITO COUNTY HIGH SCHOOL  
HOLLISTER, CALIFORNIA



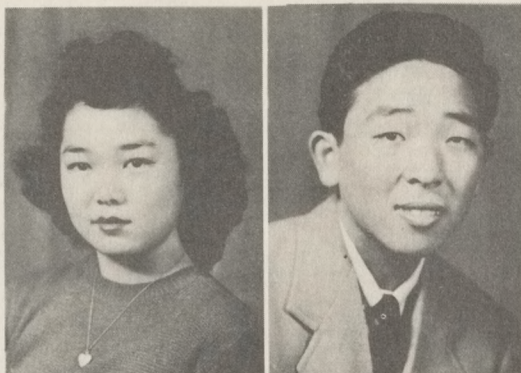
**WAKAMIYA, AIKO**

ANTELOPE VALLEY JOINT -  
UNION HIGH SCHOOL  
LANCASTER, CALIFORNIA  
HOMEMAKING CLUB (3)



**WATANABE, ISABEL**

CALEXICO UNION HIGH SCHOOL  
CALEXICO, CALIFORNIA  
G.A.A. (3)  
GIRLS LEAGUE (4)  
GIRL RESERVES (3)  
SCIENCE CLUB (3)  
DRAMATICS (3)  
TRI-Y (3)

**YAMADA, SHIG**

TUSTIN UNION HIGH SCHOOL  
TUSTIN, CALIFORNIA  
HI-Y (3)  
SENIOR CLASS TREASURER (4)  
SCIENCE CLUB (3)

**YAGYU, RUTH**

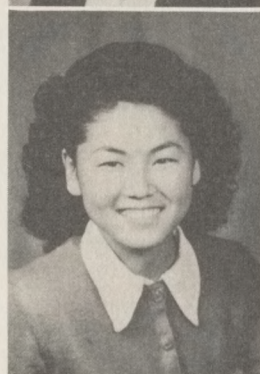
ROBERT LOUIS STEVENSON  
JUNIOR HIGH SCHOOL  
LOS ANGELES, CALIFORNIA  
COMMERCIAL CLUB (3)

**YAMAGUCHI, DOROTHY**

SALINAS UNION HIGH SCHOOL  
SALINAS, CALIFORNIA  
A.C.S. (3+4)  
G.A.A. (3)  
COMMERCIAL CLUB (3)  
CORRESPONDENCE CLUB (3)

**YAMADA, ROSE**

IMPERIAL UNION HIGH SCHOOL  
IMPERIAL, CALIFORNIA  
HOMEMAKING CLUB (3)  
GIRLS LEAGUE (3)

**YOSHIOKA, LLOYD**

SALINAS UNION HIGH SCHOOL  
SALINAS, CALIFORNIA

**HIGUCHI, MASAO**

ALAMITOS GRAMMAR SCHOOL  
GARDEN GROVE, CALIFORNIA  
LATIN CLUB (2+3)  
HONOR SOCIETY (2+3)  
SOPHOMORE COUNCIL (2)  
JUNIOR COUNCIL (3)

**ITANO, HIROSHI**

FULLERTON HIGH SCHOOL  
LA HABRA, CALIFORNIA

**KUSUMOTO, FAYE**

HOLLISTER UNION HIGH SCHOOL  
HOLLISTER, CALIFORNIA

**HORIBE, SATORU**

CENTRAL UNION HIGH SCHOOL  
EL CENTRO, CALIFORNIA  
LETTERMANS CLUB (3)  
FOOTBALL "B" (3)

**MURAKAMI, WILLIAM**

HOLLENBECK JUNIOR HIGH SCHOOL  
LOS ANGELES, CALIFORNIA  
A.S.B. BUSINESS MGR. (3)  
EL DORADO (2)  
JUNIOR VICE PRESIDENT (3)  
SOPHOMORE PRESIDENT (2)

**NAGAREDA, CHIE**

SAN YSIDRO SCHOOL  
GILROY, CALIFORNIA  
HONOR SOCIETY (3)  
LATIN CLUB (3)  
XI BETA SIGMA (3)



**NOTO, BEN**

HOLLISTER UNION HIGH SCHOOL  
HOLLISTER, CALIFORNIA

**SAKAI, KIYOSHI**

BRAWLEY UNION HIGH SCHOOL  
BRAWLEY, CALIFORNIA  
LETTERMAN'S CLUB (3)  
FOOTBALL (3)  
TRACK (3)

**SHINTAKU, AYAKO**

SAN JUSTO SCHOOL  
SAN JUAN BAUTISTA, CALIFORNIA  
LATIN CLUB (2)  
HONOR SOCIETY (3)

**OBATA, BETTY**

SAN JUAN UNION HIGH SCHOOL  
SAN JUAN BAUTISTA, CALIFORNIA  
LATIN CLUB (2+3)  
JUNIOR RED CROSS COUNCIL (3)  
HONOR SOCIETY (3)  
XI BETA SIGMA (3)

**SHICEMASA, RAY**

ANAHEIM UNION HIGH SCHOOL  
ANAHEIM, CALIFORNIA

**TANOUE, GEORGE**

ARROYO GRANDE UNION HIGH SCHOOL  
PISMO BEACH, CALIFORNIA

## SENIOR SIGNATURES



# SENIOR CORE

No doubt, you've all seen and heard of the good work the "Mighty Seniors" have done in sponsoring those super dances and assemblies, so now let's see them in their everyday life, in core, deep in their studies(?).

Err.....what a cold morning! A quarter after eight! Gosh, we'd better hurry, we're late! Ahh! Here's rec. hall 26, the "home" of the Seniors.

Hey, Jits, are you trying to give yourself a hot seat?!? Yep, that's Jits Otsu, the class wit, a settin' on the stove trying to keep warm! ....and will you check the glad-eye he just gave Hiroko Nishida!..... Well, look at what the breeze just blew in! That "bore some foursome", Iseko Nagato, Mary Tsujii, Haruko Hashimoto, and Kazumi Tsuchiyama.

Say, Ole Man Winter isn't so bad after all! Take a gander at all those colorful sweaters he brought out; pretty "Sako" Nishioka in a very becoming pink sweater, figuresome Shiyuko Ogura in a flashy (but, definitely!!) red sweater, attractive Sets Hokama in that familiar blue letterman sweater (by the way, Sets, whose is it? Could it be.....?), popular Miyo Sunago in a very nice green, and all the rest. Dazzling, isn't it, boys?

Now, fellas, tear your eyes off those beautiful sweaters (or do I mean girls?) and let's take in some of this thing called studies. European History, English Literature, and Relocation is what those "Solid Seniors" tuck away in their brains (what little they may have.) Napoleon, the French Revolution, Daniel Defoe, Thomas Gray...my, what pleasant(?) memories those names bring!....."Whadda ya mean, pleasant?" Who was that? Oh, just "lover" Nishimura. He seems awfully grouchy today. (Amazing, isn't it?) He must've got out of the wrong side of the bed today.

Now, let's go on to the B section, Mr. Sandmeyer's class, and see what's cooking there.

Why, what on earth happened to this class??? Man shortage seems to have hit it! (All the better for you boys; eh, Mas N., Lloyd Y., Harry B., and Jack N.?) Boy, look at all the pretty girls! Eleanor Kushida, our secretary, Irene Noda, another very active member of our student body, Mary Takanabe, Iris Furuya, Emmy Nagareda, Shiori Inada, Kiyo Kariya, and, gosh so many more!

This class is undertaking another field of study besides European History and English Literature. It is occupations. Dress designing, beauty operating, writing, and nursing are only a few of the many occupations that have been selected.

Yuri Torimaru wants to be a secretary. We wonder why? So that she can sit on the boss' lap? Could be.....

"It's ten o'clock. Come on, let's go boys! Class is dismissed."

"Wait a minute, Mas, you've got....."

And so the curtain of Time closes on another scene of everyday life in the Senior core classes, periods one and two.



EDITOR  
KEI  
INOUE

# POST-ANO CHRONICLE

PRICE  
A SMILE

JUNE , 1970

PLAYBOY JITS OTSU  
MARRIES FOR 3RD TIME

MITSEY OHYE MAKES DEBUT

Declaring that this time it's the real thing, Jits Otsu took Hiroko Nishida as his 3rd wife. This will be Miss Nishida's first marriage and Jits Otsu's third. Prior to his marriage Jits was married to the following: Kiyoko Kariya, his former beautician, and Ruth Miyada, who recently married Joe Ukegawa, the great football star.

The bride was dressed in a simple white gown, with "3 flowers" as her bouquet. Her maid of honor was Mitsuko Kohatsu. Kaz Higashi was the best man for the big event. Rev. Thomas Koike joined the two in matrimony.

## SPANKED WIFE DIVORCES HUBBY

Testifying that her husband always spanked her whenever dinner was late, Mrs. Shigeko Matsuno Mayeda was granted a divorce from Charley Mayeda.

"I didn't really spank her, sir," Mayeda, 6ft. 3 in. 200 pounds testified. "I just paddled in accordance with an old custom we developed during our courtship."

"Custom or not," judge Shiori Inada, the 1st woman judge, ruled, "It's as if you threw a stone gently thru a window."

## A DISASTROUS CRASH

Tak Murase, the famous aviator, who flew across the Colorado River, is recovering from a disastrous crash. At present, he is at the "U Break Em-We Fix Em" Sanitarium, and according to the latest report from Dr. Allan Uyeno, he is coming along very nicely with the help of his nurses, Mary Akamatsu and Tomi Fukuda.

## OPENING OF "HIGASHI'S HIDEOUT"

Tamio Higashi recently announced the opening of his new night club, "Higashi's Hideout." The master of ceremonies for the night will be that popular man about town, Takeo Sugimoto.

Scheduled on the program for the evening are: Frances Nakano and her all girl orchestra, who will render the music for dancing and entertainment; the famous singer trio, who recently were awarded a radio contract by the Chesterfield Cigarette Company; Pauline Takahashi, Mary Nagata, and Chizuko Akiyama; and an endless list of more talent with whom we are familiarized.

Before a huge audience of three thousand, Miss Mitsey Ohye made her debut at the New York Metropolitan Theater in the opera "Carmen."

Also in the same evening Mas Murakami, a young rising conductor, made his debut.

Some notables seen at this event were Ben Tatsu-mi, owner of the BT Chop Suey House; Mr. and Mrs. Moto Shimano (the former Isabel Watanabe), the proud parents of quadruplets; and Miss Mae Nakanishi, the famous linguist, with her escort, James Nakamura, the basketball coach of the Poston Blue Socks.

## CHURCH NOTICE

At the Associated Christian Meeting this Friday there will be as a guest speaker, Rev. Harry Baba. He will relate stories of his trip to the Orient.

EVERYONE IS INVITED!!!

VOTE

FOR

SATORU HORIBE

FOR

DOGCATCHER



CHOP CHOP'S CHATTER  
By Yoshiaki Tsuchimoto

Johnny Miyata, noted engineer, was seen escorting his secretary, May Emoto, at the Rainbow Room last Friday evening.....Shiyuko Ogura, is it true that George Fukuda comes to your Beauty Parlor for a perm, or is it you???.....Toshiye Miyamoto surely was a knockout in that charming dress designed by Alice Fukunaga.....She was at the reception ball held for that eminent writer, Kaz Hoshino, and his lovely wife to be Miss Betty Fujita, Miss Fujita kaz's former secretary was also a knockout in a black suit, smartly designed by Rose Yamada.....Misao Seko, the gay divorcee, has been often seen lately in the company of Sam Goda, the well-known scientist....Pob Hirahara, the great mechanic, and his lovely nurse, Florence Tamura.....ooh!!

BITS FROM HERE & THERE

Mary Takanabe has been given a contract by J.S. Stevens, head of the Varga Calendar Inc., to work on next year's calendar.

Eleanor Kushida was the winner of the "Girl with the most talent" it was announced last night.

Have you read Love Comes Once by Kaz Kawanuma..... It's about her own life story and it's worth the money you pay for it and the time you spend reading it. It's available at Nomura's Reading Shop. (con't on next column)

"THE GREAT LOVER"  
TO HOLD OVER

"The Great Lover" starring Yosh "Lover" Nishimura holds over for the tenth time, at the Orpheum, beginning today.

Betty Imamura is starred opposite Nishimura, and Emi Sugimura, Tadashi Shibata and Edith Takii have important supporting roles in the story which deals with all the loves of the Great Lover.

"The Girl Rush," comedy musical starring Ben Kinoshita and Akiko Tamura is the companion feature.

BITS FROM HERE & THERE  
(con't from 1st column)

Kikue Ikuma, famous bugologist, recently discovered a new bug. Reports say that she will call it, "Payten's Bug."

Roy Ohta and his five man orchestra was just voted the top band of the land. Says Roy, "I used to be in the reds, but now I am in the blues."

Yuri Torimaru (80 words a minute) was hired as private secretary by the multi-millionaire, Lloyd Yoshioka.

Tamotsu Tanaka, renowned hat explorer, who just returned from Africa brought with him the skin of a cat which he claimed gave him a hard battle before its defeat.

Frank Hori, who recently won the National Tennis Championship award at the Olympic Games held at Berne, Switzerland, is returning to the States with THE HOLY GRAIL.

JEANNE'S BEAUTY NOTES  
By Jeanne Sakaki

Girls, I just heard of one of the finest beauty treatments available at the present time. Mas Nobuto has just offered to the public for the first time, jars of Poston mud that he collected years ago, and which he has aged. This jar of mud is guaranteed to make you look years younger and so much whiter.....Let's drop in to Kazuko's Beauty Shoppe. I hear that she is selling it by the gallons so you'd better hurry over before it sells out.. .....Are you in need of a new permanent wave? A little birdie told me that at the New York Beauty Salon a new kind of wave which stays in for days has been developed.....also hear that it has some connection with the Pacific Ocean waves..... ...Hint to the overweight: If you want to know the secret of the figure divine, consult Miss Wiseman....Well, that's all for today...

WANT ADS

WANTED- A brand new convertible car to trade for the one that gave me much service while in Poston. Phone Mr. 7734 or call at 1223 Westward Avenue, N.Y. Eva I. Jernigan.

WANTED-A new hair style If you know of anyone with one, please notify the Beauty Shop. Miss Backus.



# MARRIAGE LICENCES

Nagareda-Okamoto; Emmy Nagareda, Seamstress, to Frank Okamoto, News Broadcaster.

Kameo-Nakahara; Rima Kameo, Singer, to Jackie Nakahara, Boxer.

# PERSONALS

The Phi Beta Kappa Alumnae Ass. of Philadelphia held a luncheon yesterday at the home of Miss Hiroko Sakamoto.

Shig Yamada, the eminent radio engineer, is here visiting at the home of Mr. and Mrs. George Tanouye.

Jim Ikeda and his pretty wife, nee Yukie Masutani were cocktail hosts in their Beverly Hills home for Leo Nakamura and others.

Miss Rose Sase of La Jara is in Denver attending the Noritake Sewing School.

# OBITUARY

Tats Harold Nagase, the greatest crooner, committed suicide yesterday because one of his female audience did not swoon when he crooned.

Mustachio Horiuchi ate himself to death, when he sampled his own cooking.

# PERSONALS (con't)

Yoshito Nakashima and Molly Ninomiya entertained Dr. Makiko Kondo at their house with Koko Komatsu, the seamstress; Sachiye Kato, nurse; and Takako Nakahara, noted Writer as guests.

# NEW ADDITIONS

25 Pound Baby Born New York (N.Y.) Jan. 1

On December 29, 1969 Mr. and Mrs. Sandmeyer became the proud grandparents of a 25 pound baby.

Mr. and Mrs. Ray Shigemasa are the proud parents of a baby boy. It was born on Sunday. Mrs. Shigemasa and the baby are doing very nicely.

# NEW YORK BEAUTY SALON

Nancy Sakuda  
826 25th St. Dover, Ohio  
Tabor 2575

BATTERY CHARGING  
WASHING  
GREASING

TIRES  
BATTERIES  
RECAPPING

KHO'S MOTOR SERVICE  
GENERAL AUTO REPAIRING  
333½ at Lawrence Street  
Tel: Main 9399  
Kho Iseda

<p>JOE ONO JEWELER and WATCHMAKER 2023 Larimer St. N.Y. PHONE Tabor 1997</p>	<p>20 Street Cafe  1123 20th St. PHONE Kestone 9060  AIKO WAKAMIYA</p>	<p>MAY'S BARBER SHOP May One  2040 Larimer St. Denver, Colorado Phone LO bor 111</p>
<p>TAWA'S Shoe Repair Shop 1219- 19th St.  Denver, Colorado PHONE Tabor 2345 KEN TAWA</p>	<p>American &amp; Chinese Dishes  Open Week Days 6:00 a.m.- 8:00 p.m.  Sundays Closed Banquet by Appointment HOME-BAKED PASTERIES</p>	<p>OLYMPIC HOTEL 222½ Johnston's St. Sunshine, Ohio  Tel: YO far 666 Transient and light housekeeping Mgr. Masayo Oda</p>



# IDEAL SENIOR

Mary Takanabe

May Ono

Ayako Sakamoto

Setsuko Hokama

Koko Komatsu

Louise Fukaye

Chizuko Akiyama

Hiroko Sakamoto

Jeanne Sakaki

Tomi Fukuda

Chizuko Akiyama

Iseko Nagato

Aiko Nakamoto

Harue Kojima

Shiyuko Ogura

Linda Sakaye

Pauline Takahash

Frances Nishioka

Eleanor Kushida

Kaz Kawanuma

Miyo Sunaga

Hiroko Nishida

Setsuko Kuwahara

Pauline Takahash

Tsurue Taniguchi

Takako Nakahara

Shigeko Tsuchiyama

## FIGURE OR PHYSIQUE

EYES

LIPS

HAIR

TEETH

NOSE

DIMPLES

BRAINS

LEGS

VOICE

SMILE

COMPLEXION

LOOKS

NEAT

CLOTHES

SWEATERS

PERSONALITY

POPULARITY

TALENTED

DANCER

COOPERATIVE

CHEERFUL

QUIET

MANNERS

WIT

AMBITIOUS

ATHLETIC

Frank Hori

Takeo Sugimoto

Tom Koike

Sus Mori

Richard Shindo

Frank Okamoto

Kaz Higashi

Johnny Miyata

Smiley Kaii

Tats Nagase

Skeeter Mukai

Frank Okamoto

Takeo Sugimoto

Jits Otsu

Shig Fujimi

Toy Ohta

Yoshi Nishimura

Jackie Nakahara

Masaru Murakami

Richard Shindo

Shig Yamada

Yoshi Nishimura

Tsuneyoshi Horiuchi

James Nakamura

Henry Miyake

Mas Murakami

Frank Hori



# SENIOR WILL

- I, Harry Baba, leave my ambition of wanting to be a preacher to Mr. Sandmeyer.
- I, Shig Fujimi, leave my ability of printing to the Desert Daze Staff.
- I, Koji Fukawa, feeling sorry for the young "He yo kos", leave my high ambition of becoming a G.I. Joe.
- I, Louise Fukaya, leave my boy friends to Teruko Kajihara.
- I, Shiro Furukawa, leave my clean cords to Roy Uyetani.
- I, Iris Furuya, leave my straight legs to any one with "Daikon" or "Gobo" a-shi.
- We, Haruko Hashimoto and Iseko Nagato, leave hand-in-hand.
- We, Akira Hirata, Henry Ishino, and Hiroshi Miyamura, not having anything to leave, just leave.
- I, William Hiroto, after lots of pondering over the matter, leave my handsome looks to anyone who applies for them first. (Now, don't rush, boys)
- I, Setsuko Hokama, leave my figure to Miyeko Yoshida.
- I, Jack Hondo, leave my ability for quietness to the inseparable "Saints".
- I, Bob Horiye, leave my "T-bone" to May Hokama for her insatiable appetite.
- I, Kyoko Ikeda, leave my quiet ways to John Ohmura.
- I, Kei Inouye, gayly resign my position as editor of the Kampus Krier to anyone who hasn't enough troubles already.
- I, Smiley Kai, leave to Tomi Ono my ability to attend all of my classes.
- I, Shig Kawanami, leave my unusual brains to be studied in the Biology lab.
- I, Harry Kishaba, gleefully desert my Grecian profile to the worthy Yosh Morinishi.
- I, Oscar Kodama, leave behind Louise Momita, hoping that the underclass boys will take good care of her.
- I, Mitsuko Kohatsu, leave my ambitious nature to Donald Sakaki.
- I, Harue Kajima, leave my appititude for clothes to specify Mary Miyanaga.
- I, George Kosaka, leave my timidness to Ben Yasuda.
- I, Setuco Kuwahara, leave my quietness to Teruo Kobata.
- I, Mamoru Maruyama, donate my manly strife to Donald Miyagi.
- I, Shoji Matsubara, will my bicycle to the organ grander's monkey.
- I, Emiko Matsumoto, leave my soft laugh to Tom Nakama.
- I, Henry Miyake, leave, bringing joy and happiness, I'm sure to all of my teachers.
- I, Sus Mori, leave my physique to Kingo Takeda.
- I, Masami Muramoto, leave my ambition of wanting to become a farmer.
- I, Teruko Nagasaki, leave my petiteness to Setsuko Kobata.
- I, Tats Nagase, leave my swooning voice to the late Frank Yamamatra.
- I, Sanami Nakamura, will my girlishness to Elaine Momita.
- I, Aiko Nakamoto, will not leave Tarzan to anyone.
- I, Lillian Nishijima, leave my friendliness to Larry Nakashima.
- I, Frances Nishioka, leave my graciousness to Jean Kido.
- I, Irene Noda, leave my title as "Akkun" to anyone in search of an alias.
- We, Shig Noguchi, Hideo Setsuda, and Ben Noto, leave all the goodlooking girls in Poston to the future Casanova, Sammy Iwamoto.
- We, Betty Obata, Chiye Nagareda, Faye Kusumoto, and Ayako Shintaku, leave much to our own surprise.
- I, Teiko Ogata, leave Poston in search of a better future.
- I, Helen Okita, leave my passing moods to Aiko Deguchi.
- I, Kiyoshi Sakai, leave to the Beauty Shop my naturally wavy hair.
- I, Ayako Sakamoto, do not leave my quiet ways cause I'm taking them with me.
- I, Linda Sakaye, leave my sweaters to Taeko Omori.



I, Fred Sasaki, leave my well-groomed manners to the incoming Senior boys.  
 I, Shizuko Seki, leave my serious mind to Yoneko Gotori.  
 I, Richard Shindo, leave my heart to the junior girls, who I hope will receive it gratefully.  
 I, Miyo Sunago, leave my witty ideas to Mary Yamashiro.  
 I, Mary Suzawa, leave my cheerfulness to Shoko Nomoto.  
 I, Mary Taira, leave my good friend, Lily Miyagi, alone in this world.  
 I, Tom Takata, leave my fancy style of dancing to Mas Yamashiro.  
 We, Tsurue Taniguchi and Sachiko Tanaka, leave our natural ability of getting A's to Ken Sugihara.  
 We, Kazue Tsuchimori and Fusako Toyosaki, leave our seats in Miss Jernigan's core.  
 I, Kazumi Tsuchiyama, leave locks of my hair to Marcella Miyata.  
 I, Shigeko Tsuchiyama, will my athletic ability to Kikue Yamamoto.  
 I, Mary Tsuji, leave my "poker face" to Nagato Komatsu.  
 I, William Ueki, leave causing Miss Jernigan great joy and relief.  
 I, Dorothy Uyeno, leave nothing. There's not enough of me.  
 I, Hank Wada, leave my Poston tan to Amy Umeda.  
 I, Ruth Yagyū, leave my collection of moron jokes to Mrs. Penn.  
 I, Dorothy Yamaguchi, leave  $\frac{1}{2}$  ounce of my conscientious nature to the irresponsible Sadao Emoto.  
 We, the Senior Class, leave Miss Hirata. (take care of her, please.)  
 (H.H.'s note: At last!)



**JUNE 1945**



# JUNIORS



- MITSEY -





## JUNIOR COUNCIL

Left to right, First Row: Taeko Omori; Emiko Sakamoto; Yeiko Baba; Grace Ishida; Tayeko Okamoto. Second Row: Sets Masutani; Tamio Yoshida; Frank Yamamoto; William Murakami; Teruo Kobata; Mr. Sanematsu.

The above smiling faces of the Junior Council are the ones responsible for leading their class to another successful year at the Poston High School. They lead the class through thick and thin, the class looking back to the dull reminder of their past life, and the appalling thoughts of having to worry about graduation in the future.

As the leader of this active group, Tommy Yoshida was quiet, but quite efficient at his job. Tommy's right hand man, William Murakami, Vice Prexy, supervised the very successful Junior-Senior Prom with the help of the Council. Ties and flounces; hose and heels; gardenias, roses, or maybe even an orchid. A moon-washed setting with white lattice balconies. Such was THE event, longed for by the Sophomores, dreaded by the Juniors, and enjoyed by the Seniors--- The Junior-Senior Prom.

The minutes were faithfully written by cute Taeko Omori. Financial worries of the class were handled by ever popular Sets Masutani. The history of the class and plenty of it, was made by capable historian Yeiko Baba. Hana Oki, our tiny but mighty yell leader, kept the class peppy with all her yells. Last but not least there was tall and lanky Teruo Kobata, the town-crier who publicized the class activities.





## Jr. PLAY

Left to right, First Row: Tachiko Tsuneyoshi; Mary Akamatsu; Sally Mayeda; Mary Inouye; Taeko Omeri; Grace Ishida. Second Row: Mr. Whitcomb; Frank Yamamoto; George Yamaguchi; Tamio Yoshida; Donald Miyagi; Ike Sanbonmatsu; Mr. Sanematsu. Missing: Shoko Nemoto; Marcella Miyata; Ben Yasuda; Agnes Ito; and Ruth Horikawa.

It was on the night of December 23rd. A hush fell over the audience as the lights went down and the curtains opened. The story concerned Joe (Ben) and Helen (Mary A.) Morris. For more than twenty years, they had struggled to give their children every possible advantage on Joe's small and static salary as book-keeper. Now, of the four girls, Celia (Shoko) was married; another, Nancy (Sally), was a successful newspaper woman; a third, Sylvia (Ruth), was attending musical school; while the fourth, Winnie (Agnes), went to high school. The one boy, Ray (Tamio), was in his sophomore year at college. It was Christmas, and they all were coming home for the holidays; but it so happened that each of them came with a tremendously important problem to be solved. The problems were solved by Joe and Helen. Then, eventually, the most important problem of them all, the accusation that Joe had embezzled his boss's money, was eliminated. Into the lives of the Morris family were entwined the lives of Doris Strang (Marcella), an old family friend and someone to whom Mrs. Morris turned for comfort; Mr. Burlingame (Frank), Joe's employer; Lon Skelly (Ike), a young inventor who was in love with Nancy; and Ben Halstead (Donald), Celia's husband.



# JUNIOR - CORE

"Mr. Girdler!! For the fourth time this week, my doorsteps have been removed. I have asked Mr. Sandmeyer to help me put the doorsteps in place several times already, but what do you think? The next time I see them, I find them lying somewhere else. I know asking Mr. Sandmeyer to help me everyday is getting on his nerves and also on mine, so I thought I'd come and see you about this matter."

"Well, Miss Backus, let's find out who's up to mischief."

So saying, Mr. Girdler and Miss Backus left the office. On investigating the matter, they reached the conclusion that the boys who played basketball at Block 39 considered the doorsteps an obstruction to their playing, so they removed them. Well, all's well that end's well. Yes! The solution was simple. To make everyone happy, Mr. Girdler closed the doorway which lead to the basketball court, took the steps, and placed them before a newly-cut door on the other side of the school barrack. The casaba players, Miss Backus, and Mr. Sandmeyer were happy. The only ones who were dissatisfied were the mighty Juniors. Stairs or no stairs, class was still held.

Peek in on them. Look at sly Teruo Kobata slipping up to the desk to move the hands of Little Ben. Faithful Little Ben who came to class everyday! Watch it, Teruo! Miss Backus has her eye on you!

Listen!! "Four score and seven years ago, our fathers brought forth upon this continent, a new nation conceived in liberty and dedicated to the proposition that all men are created equal." Scared you, huh? Bet you thought that it was President Lincoln speaking. Well, it's Mrs. Taylor's core class reciting the unforgettable "Gettysburg Address." How solemn and serious their faces are!

Sh-Sh-- Mustn't let them know that we're peeking. Mrs. Taylor's voice with a touch of southern accent speaks calmly to the class, "This will be all for American history. Let's open our yellow books. (By yellow books, Mrs. Taylor means the English Grammar books that her students carry about.) Please turn to page 100. 'An adjective is a word used to describe or limit a noun or pronoun. It has three degrees of comparison: Positive, comparative, and the superlative. Example: tall, taller, tallest.'" Here pops up talkative Hiroshi Fukuda saying innocently, "Mrs. Taylor, it sounds just like a Sears and Roebuck catalog. You know, good, better, best."

What noise, or should I say chattering, from the next room! Let's listen in and see what it's all about. "Gee, I knew all the answers to Test A, but I had Test B." "That's nothing! I always seem to get Test B when I know the answers to Test A." Are you able to understand all this talk about Test A or B? Well, it just means that Mr. Whitcomb gives out two types of tests to his class. One side of the class gets Test A, while the other side gets Test B. Why one gets Test A when he knows all the answers to Test B will remain a mystery. Mr. Whitcomb is always sure to be saying that in order to graduate, you must do this, but if you ask me, my tests seem to be leading me back to my freshman year. It may be observed that Mr. Whitcomb's classes are learning how to form their own opinions. That's why you'll always hear him say, "Never take my opinions. I am not an authority. If you disagree with me, throw mine out the window."

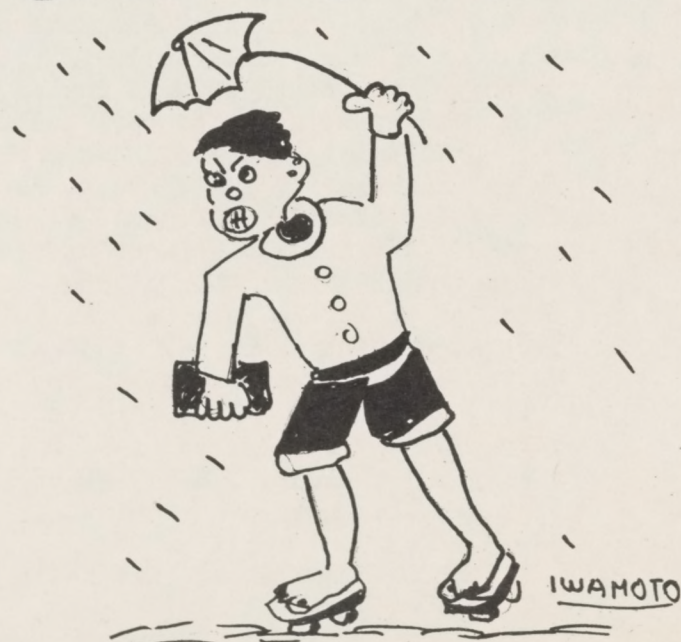
Oh! Oh! That's our cue! Let's leave before we get thrown out the window.





Left to right- First Row: Miss Backus; Taeko Omeri; Ayako Shintaku; Chie Nagareda; Betty Obata; Florence Okane; Satsuki Tabuchi; Teyeko Kubeta; Grace Ishida. Second Row: Terue Kobata; Kazuko Kawamoto; Motoko Sugihara; Bernice Setsuda; Kaoru Shigematsu; Ida Yamasaki; Irene Takenaga; Masami Yamaoka; Shigemi Nakasaki; Frank Dei; Robert Yeshida; Hiraeki Yamamoto. Third Row: Tomohide Nakamine; Hisao Sakurai; Yeshite Uchida; Jim Nishiyama; Bob Meri; Tamie Yeshida; Donald Miyaji; Atsue Fukuda; George Heribe; Ben Heriye; Akie Iwamoto; Takeshi Ryono; Taki Yonemoto; George Nishino.

## BACKUS' 3+4



OFF TO SCHOOL  
ON A RAINY DAY.





# TAYLOR'S 1+2



Left to right-First Row: Louise Momita; Mary Kumada; Miyeko Yamakuichi; Shigeko Takahashi; Mary Akamatsu; Sally Mayeda; Florence Koga; Pearl Kawaguchi; Yoshi Watanabe; Chieko Fukawa. Second Row: Frank Fujita; Noboru Imai; Fusao Nagareda; Roy Uyetani; Jim Takata; Hiroshi Fukuda; Ike Sanbonmatsu; Atsumi Sugita; George Matsui; Elwin Ninomiya; Frank Yamamoto; Mrs. Taylor.





Left to right- First Row: Hieko Tanaka; Florence Nakashiki; Tamiko Akada; Haruko Kobashi; Yuki Kusumoto; Yasuko Kikumoto; Hannah Oki; Toshiko Seriguchi; Tayeko Okamoto; Shizuko Kaminaka; Marcella Miyata. Second Row: Kikuko Yamamoto; Mrs. Taylor; Kimiyo Tamura; Ruby Mori; Toshiko Kawamoto; Edith Arita; May Hokama; Shirley Nishioka; Tomi Ono; Kazuko Nakamura; Notuko Doibatake; Shoko Nomoto. Third Row: Sho Takeda; Hiro Tsuchida; Masakazu Fujimoto; George Miyoda; Larry Nakashima; Ken Sugihara; Mas Higuchi; William Murakami; Iwao Nakao.

## TAYLOR'S 6+7



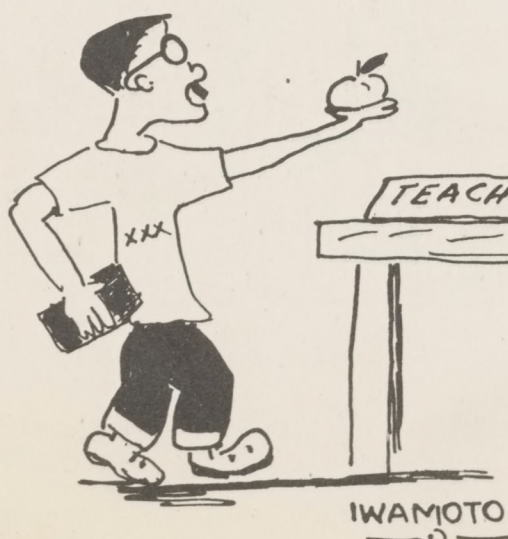
-MITSEY-





# WHITCOMB'S 1-2

## TEACHER'S PET



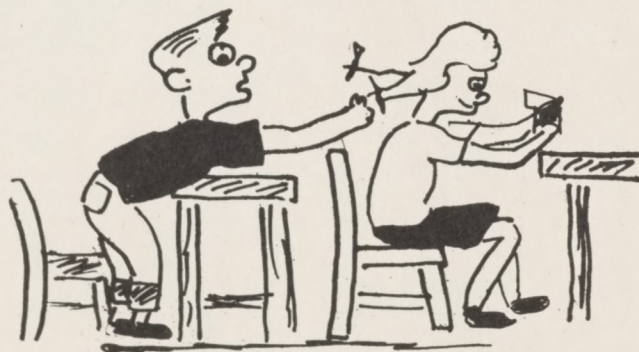
Left to right-First Row: Lilly Miyagi; Yukie Kusada; Teruko Sakamoto; Grace Nagata; Michiko Oka; Chiyoko Morita; Frances Kadawaki; Emiko Sakamoto; Itsune Oda; Tamiko Shimahara; Teruko Kawaguchi; Michiko Sakon. Second Row: Faye Kusumoto; Shinako Ninomiya; Arlene Eddow; Tachiko Tsuneyoshio; Aiko Deguchi; Yeiko Baba; Rinko Fujimi; Sumiko Sasaki; May Kumaga; Peggy Tanaka; Mary Inouye; Lily Nagata. Third Row: Mr. Whitcomb; Joe Nakano; Tom Yamaoka; Ken Uyeno; Kazuo Shigaki; Teru Matsumoto; Toru Nakahara; Tetsuo Okabe; Henry Hamada; George Yamaguchi. Absent: Kazuo Chino; Mac Nakamura; Teruo Tanida; George Hedani; Shiyokei Mukai.





Left to right—First Row: Itsue Ikeda; Sachiko Ikeda; Kazuko Sate; Kimiko Seki; Mieko Yamashita; Martha Takanabe; Kazue Noritake; Yoshiko Tanaka; Rose Morimoto; Masako Matsunaga; Yoshiko Nagata; Kiyoko Nakastukasa. Second Row: Soichi Inada; Katsumi Takezumi; Kiyoshi Kajiko; Johnny Takano; Setsuo Masutani; Ben Nakata; Howard Inao; Noboru Itani; Kazuo Kosaka; Mr. Whitcomb. Third Row: Allen Uyeno; Ray Uyeda; James Isobe; Kenji Neyama; Yukio Ikuma; Tom Akiyama; Yukio Fujimura; Shigeru Kawanami; Shiro Furukawa; Kazumi Arichiyama; Kiyoshi Nishimori; Ken Obata; Akira Tabata; Roy Endo. Absent: Akemi Morita; Ben Yasuda; Edward LeBerthon; Takashi Nagaro; Utao Kitasaki.

## WHITCOMB'S 3+4



BAD BOYS

IWAMOTO



# NICK NAMES

By AKIO IWAMOTO



PEAR HEAD



DEAD-EYE



CATFISH



CHEESE



SPIDER



PORKY



BRUISER



APPLE-HEAD



SHORTY



DRAPO

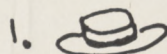
## SCHOOL-FADS



TYPICAL CLOTHING  
FOR SUMMER  
(LEVIS + T-SHIRT)



TYPICAL CLOTHING  
FOR WINTER  
(P-COAT + SNOW CAP)

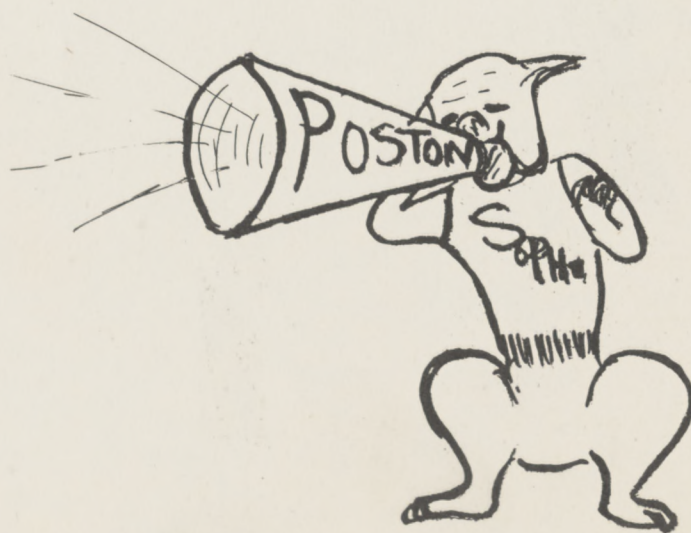


5. TOTAL RESULTS





# SOPHS



- MITSEY -





## SOPHOMORE COUNCIL

Left to right- First Row: Lily Ikeda; Mary Toyosaki; Mary Yamaguchi; Mary Tanaka; Yuri Suzuki; Sumiko Morikawa; May Kumagai. Second Row: Tamotsu Kitabayashi; Goro Fujii; George Kohatsu; Hiroshi Iketani; Yoshi Morinishi.

"Prince Charming Sanematsu?" Oh, I catch. You're talking about that super sophomore assembly. It certainly was good to have a sophomore class that didn't sit back and wait for the upperclassmen to carry on school activities. Anything but passive were these sophies. You went to their "Sophomore Swing", didn't you? Aah! I still dream of those chicken sandwiches and those cokes. Such a spread!

They knew what they were doing when they picked such an energetic council..... Mrs. Whitcomb, Advisor; George Kohatsu, President; Yoshi Morinishi, Vice-President; May Kumagai, Secretary; Hiroshi Iketani, Treasurer; Goro Fujii, Business Manager; Tamotsu Kitabayashi, Athletic Manager.



# SOPHOMORE CORE

Yeow! there goes that chimney again. It seems as though it falls every morning just to tune the voices of the girls in Mrs. Whitcomb's second and third core class. Golly, girls! which one of you hit the highest note? Poor Mrs. Whitcomb has a time trying to keep her voice above that shriek you let out every now and then. Of course, you boys don't assist that stove pipe in any way, do you? You should know by now that Mrs. Whitcomb doesn't consider a blizzard of soot excuse enough to dismiss class. You'll just go on with the Constitution and the agreement of verbs and subjects no matter what.

Say, did I mention boys? Whew! Look at this afternoon core. Only five boys!!! And who is the star of them all? Fujio Kazama.

Too bad none of these girls are next door in Miss Lapinskas' class. That is too full of boys! Can you imagine? Those "Three Musketeers," George Masamori, Nagato Komatsu, and Donald Murata, in the same class with Shizuo Ishida and Yusuke Omeri? I guess that is why Miss Lapinskas' favorite Shakespearean line is "You blocks, you stones, you worse than senseless things!"

Incidentally, have you ever heard her read Julius Caesar? Even Takanori Arao sat up and listened when she delivered Mark Antony's address.

Here comes Yoshio Hora---and look! he's stuffing another cake down his mouth. Going to school in a barrack located in a canteen block isn't such a good idea. See all the expanding waistlines and puffy cheeks. Miss Lapinskas tries to work off the fat by having the boys sweep and the girls wash windows.

Her first and second core surely do have a hard time. The single stove doesn't work very often, and yet she holds class. No pity! It's hard work trying to keep warm by concentrating on community planning and the mayor-council type of government.

And listen to that Japanese music class next door! "Plink, plink." "Aak-ooooah....."from eight until quarter of twelve. Will we ever be glad when we move to the quiet of the adobes.

Listen! through the thin wall you can hear Mrs. Whitcomb and her class. What are they reciting? The Preamble to the Constitution. You know what is wrong with these two Soph core teachers? They both believe in having their kids memorize poetry and great quotations. Gollse....You can't win.





Left to right- First Row: Miyeko Yoshida; Mary Miyanaga; Chiyeko Sato; Sadako Nakamura; Taeko Ono; **Laura** Ichinaga; Toshiye Nakamura; Mary Imagawa; Harume Oda; Dorothy Omori. Second Row: Miss Lapinskas; Yoshiko Sato; Michiko Ishii; Mitsuye Kojima; Kinuye Itano; **Ruby** Wada; Florence Watanabe; Michiko Yokota; May Kumagai; Sumiko Morikawa. Third Row: Donald Sakaki; Alvin Shihata; John Nishimura; Raymond Kushida; George Kohatsu; Yoshi Morinishi. Absent when pictures were taken were: Chizuko Omori; Faye Takaguma; June Miyamoto; Teruji Kajihara; Lloyd Nishijima; Sadao Emoto.

## LAPINSKAS' 1+2



LOTS of HOME WORK





Left to right- First Row: Jeanette Yoshioka; Betty Ochiyo; Jean Kido; Hisako Sumioka; Rose Kodama; Chiyo-ko Ochi; Shizuko Tanaka; Fumiko Tsuchiyama; Lilly Ikeda; Toshiko Yano; Yoshiye Morimoto; Hanako Nishiyama; Ruby Yoshida; Masako Hirabayashi; Tamako Fujioka. Second Row: Miss Lapinskas; Eddie Ikemura; Bob Okabe; Willie Yasuia; George Masamori; Paul Chikahisa; Roy Otayashi; Hiroshi Iketani; Kinjo Takeia; Keiji Kawashima; Takanori Arao; Henry Sugimoto. Third Row: Charlie Horiye; Yusuke Omori; Donald Murata; Bob Uyetani; Yoshio Hora; Joe Kondo; Nagato Komatsu; Raymond Sasaki; Hiroshi Matsumoto; Ben Omoto; Shizuo Ishia; Goro Fujii; Gene Shimamoto.

## LAPINSKAS' 3-4







## WHITCOMB'S 2+3



IWAMOTO

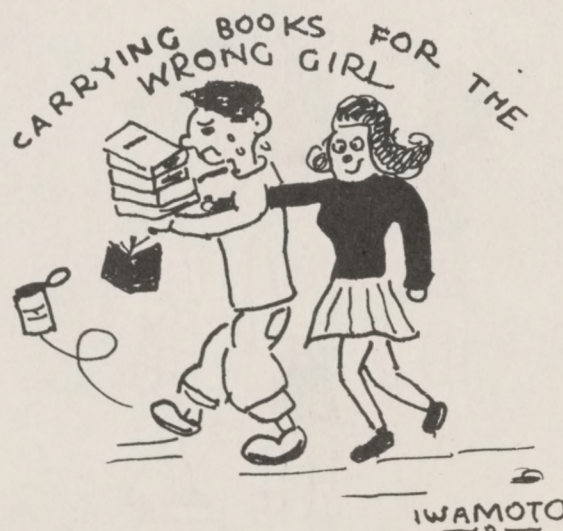
Left to right- First Row: Mutsue Nagareeda; Itsue Nagareeda; Naoko Tanaka; Mary Yamaguchi; Kaye Awaya; Satsuko Ota; Emiko Kamiya; Yoshiko Shinno; Toshiko Yoshida; Mary Tanaka; Helen Matsuno; Mariko Seki. Second Row: Chiyomi Hashimoto; Haruko Onodera; Kay Yamashita; Ruth Kodama; Frances Yano; Nobuko Okuma; Hiieko Chisake; Akiko Togawa; Yaeko Sawabe; Tomi Shinn; Chiyeko Murase; Mrs. Whitcomb. Third Row: Henry Nishijima; John Hirai; George Taniguchi; Billy Nishijima; Setsu Ivakoshi; Henry O-saki; Aki Amano; Shoji Furuya; Herbert Nishimura; Jimmie Tsuchimori; Miyuki Mukai; Fumio Yamamoto. Absent: Tats Asamen; George Doibatake; George Mukai; Yoshiwa Nagato; Tom Nakama; Tatsuro Nomura.





Left to right- First Row: Betty Kosaka; Mary Tamura; Fuyuko Okimoto; Yukiko Tamura; Doris Arita; Betty Nakamura; Reiko Horiuchi; Tokiko Tanaka; Chiyo Hokeio; Lillyn Takahash. Second Row: Kaye Nakamura; Chiyeko Fujimoto; Keiko Ogata; Misao Nimura; Mary Kikuchi; Sueko Tabuchi; Sakaye Ouchida; Mrs. Whitcomb. Third Row: Sakaye Noritake; Lilly Yonemoto; Ritsuye Tanouye; Peggy Nakamine; Michiko Kitasaki; Mary Toyosaki; Frances Tashima; Kazuye Obe; Kanaye Hama; Natsuko Yoshida. Absent: Fujio Kazama; John Mitamura; Hiroko Nakahara; Kazushi Okawa; Yukio Sakai; Tom Shiroma.

## WHITCOMB'S 5+6





# BIOLOGY



you beautiful  
all's think  
is do  
x = 1.5  
you're

PASTON HIGH

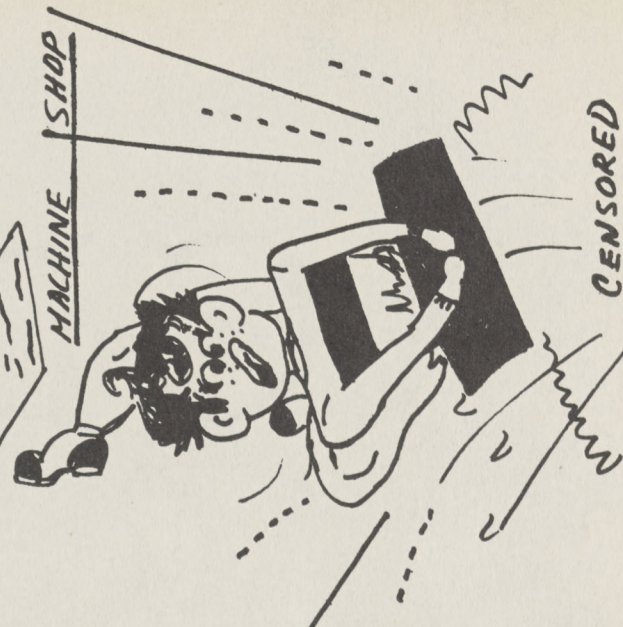
# Typing



After you finish  
lesson 6 and 7,  
go right on to  
8 9 10 and 11.  
click one more  
click. *Knute!*

hops will  
be built  
at a  
great  
cost  
to you

**CENSORED**



Lymphatic

What is an emulsion?

Name the different kinds of Teeth

Name all the vitamins

What are they found in?

What is Arterio Sclerosis?

Where does digestion start?  
 2. In the stomach.  
 3. In the small intestine.  
 4. In the large intestine.  
 5. In the rectum.  
 6. In the anus.



# CLUBS







# STUDENT BODY

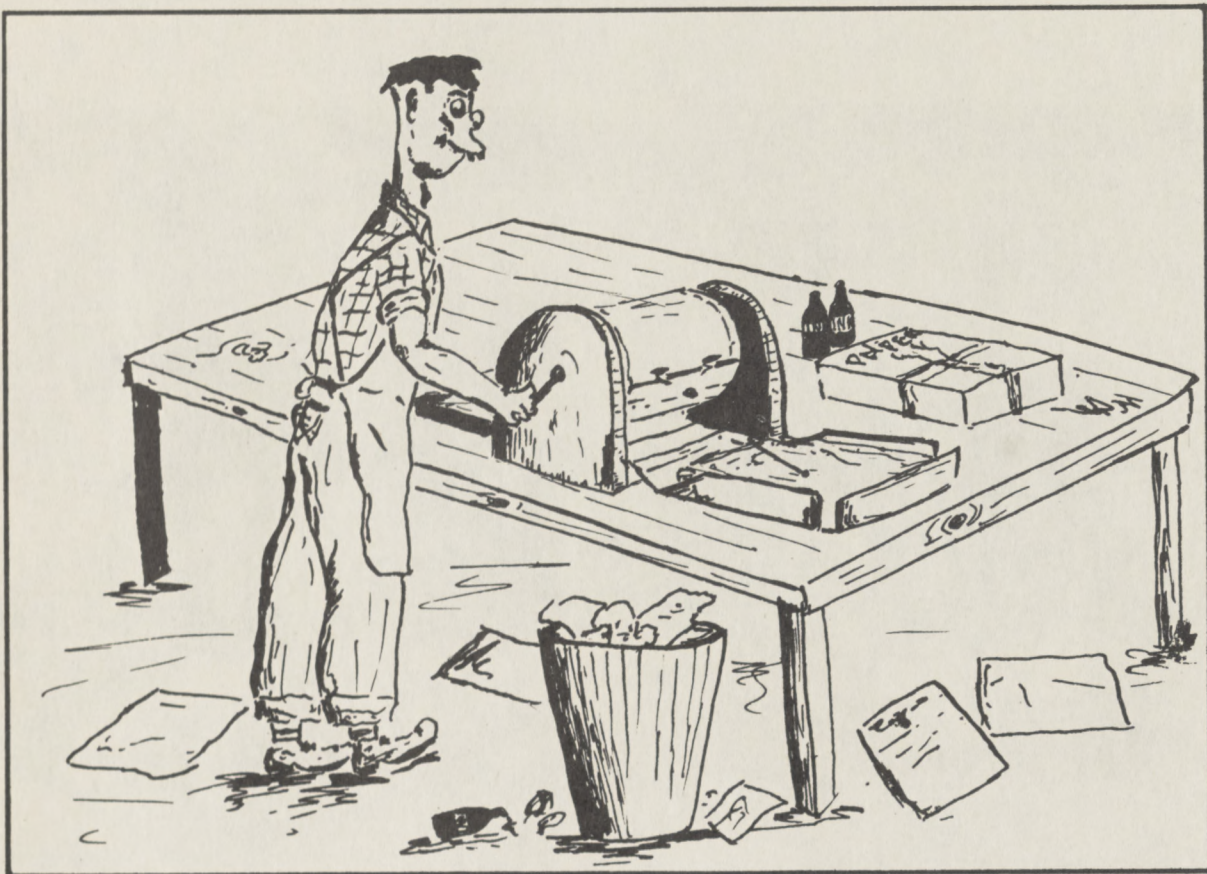
Left to right- First Row: Taeko Omori; Haruko Chisaki; Akiko Togawa; Tamiko Akada; Miyo Sunago; Pauline Takahash; Mary Inouye; Teiko Ogata; Lily Ikeda; Yuri Torimaru; Frances Nishioka. Second Row: Mr. Whitcomb; Paul Chikahisa; Kei Inouye; Yoshi Nishimura; William Murakami; Frank Yamamoto; Ben Nakata; Jackie Nakahara; Akira Sanbonmatsu.

The activities of the Associated Student Body were started late this year due to the fact that the elected prexy, Takao Ushiyama, and the vice prexy, John Sakurai, relocated. In October an election was held to fill the vacated positions and Jackie Nakahara and Yoshi Nishimura, respectively, were elected. Then an A.S.B. membership drive was held and all students who paid the dues of fifty cents a year became entitled to certain extra-curricular preferences.

The business of the Student Body was transacted by a Student Council, consisting of officers and representatives from core classes. It sponsored such activities as the "Broom-stick Bounce", the "Save Adobe" poster campaign, the Christmas Assembly, and the "Woodchopper's Ball".

Other officers for the year were: Recording Secretary, Frances Nishioka; Corresponding Secretary, Pauline Takahash; Treasurer, Miyo Sunago; Business Manager, William Murakami; Athletic Manager, Frank Hori; Yell Leader, Akira Sanbonmatsu; Campus Krier Editor, Kei Inouye; Advisor, Mr. Clayton Whitcomb.





# KAMPUS KRIER

That fellow you saw covered with black ink from nose to knee was only a poor member of the Kampus Krier Staff. Ever since the staff managed to purchase a mimeograph machine of its own, it has been running off each issue of the paper. Remember the Christmas issue with the red ink?..... the extra edition, run up in three hours time, to commemorate the "at-long-last" arrival of the 1944 Annual?.....the book-length Easter number?.... Strictly Post-ton made!

Will you ever forget the first issue?....barely legible, typographical errors galore, scraggly margins. Well, don't forget your last issue. Boy! what a difference! It doesn't take much detective-work to see that the staff learned from its mistakes.

Miss Wiseman, advisor, and her staff spent many long hours soaking up ink and striving to think of new approaches and clever features. The weekly cartoon featuring the Moron (see above) is an example of this. Other outstanding features during the year were "The Mailman Brings" (letters from





Left to right- First Row: Koko Komatsu; Arlene Eddow; Shinako Ninomiya, Emiko Matsumoto. Second Row: May Hokama; Yaeko Baba; Tomi Shinn; Miss Wiseman. Third Row: Shiro Furukawa; Yoshi Nishimura; Kei Inouye; Donald Sakaki; Frank Yamamoto. Absent: Shig Kawanami.

relocatees), "Campusology", and an etiquette column.

For a long time the Kampus Krier was the only instrument of school spirit. Editor Peggy Yamato, Kei Inouye who replaced her after her relocation, volunteer cartoonist Skeeter Mukai, volunteer typist Takako Nakahara, the regular staff, and Miss Wiseman-----take a bow!





## GLEE CLUB

The glee club and orchestra were organized this year under the direction of Mrs. Phyllis Teener, of Camp III. When Mrs. Teener left the project, the groups of Camp I were guided by Mr. Harry Minami. Under his able supervision the orchestra has entered into community life by playing at the ceremonies held to speed inductees on their way into the army, as well as brightening school life by their frequent appearance at assemblies.

In the spring the two musical groups combined their efforts in producing a highly successful and highly entertaining concert.

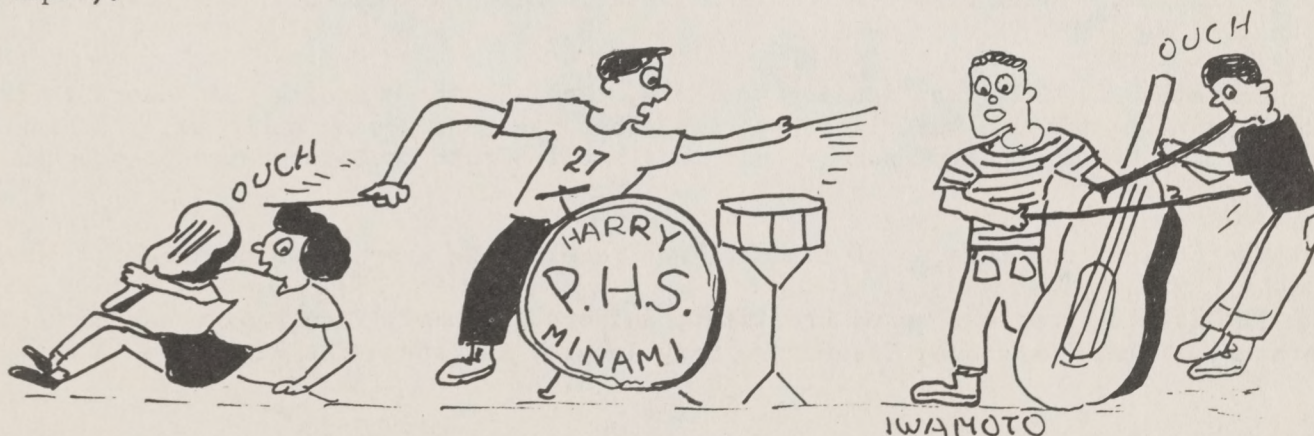
Left to right-First Row: Mr. Minami; Sumiko Morikawa (acc.); Itsue Ikeda; Sadako Tsuchimoto; Fumiko Ushiyama; Frances Yano; Betty Uchio; Tomi Shinn; Shoko Suzuki; Kay Awaya; Yeiko Baba; Grace Nagata; Kikuko Yamamoto; Tsugiko Kawamoto; Kazumi Nakata. Second Row: Jayne Fujimoto; Olive Okutsu; Mary Taira; Lily Miyagi; Toyoko Kubota; Ruby Mori; Peggy Tanaka; Kazue Noritake; Yoshiko Tanaka; Kimiko Seki; May Hokama; Taeko Omori; Bernice Setsuda; Shoko Nomoto; Lillian Mitsunashi; Shizuko Kaminaka. Third Row: Jim Nishiyama; Fred Sasaki; Kaz Higashi; Roy Ohta; William Hiroto; Tats Nagase; Donald Miyaji. Absent: Richard Shindo.





# ORCHESTRA

Left to right, First Row: Mary Yamashiro (Adv. solo violin); Hisako Sumioka (Adv. solo violin); Edith Arita (1st violin); Chiyomi Hashimoto (1st clarinet); Florence Nakashiki (flute); Doris Arita (flute); Masashi Amano (1st clarinet); John Kinoshita (1st clarinet); Tetsuo Yamashita (Adv. solo clarinet); George Masamori (1st trumpet); George Taniguchi (1st trumpet); Yoshio Akiyama (1st trumpet). Second Row: Mae Maruya (violin A obligato); Sadae Nishita (violin A obligato); Masako Ito (2nd violin); Sally Nishioka (2nd violin); Frances Nakano (viola); Sei Furukawa (drums); Roy Obayashi (2nd clarinet); Henry Sugimoto (bass trombone); Standing: Chiyeo Ochi (acc.); Ken Sugihara (3rd clarinet); Akira Amano (3rd trumpet); John Kadowaki (Eb clarinet). Not in picture: Gene Shimamoto (2nd trumpet); Kokki Shindo (2nd trumpet).







# HONOR SOCIETY

Left to right- First Row: Eleanor Kushida; Takako Nakahara; Teiko Ogata; Tsurue Taniguchi; Ayako Sakamoto. Second Row: Miyo Sunago; Sachiko Tanaka; Kimiyo Tamura; Mitsuko Kohatsu; Pauline Takahash; Mary Inouye. Third Row: Tamotsu Kitabayashi; George Kohatsu; Yoshi Morinishi; Miss Hirata; Shig Kawanami; William Murakami; Mas Higuchi.

Remember Mr. Whitcomb dancing the hula, Mrs. Taylor prancing the "odori", Miss Backus singing through the clarinet, and other teachers doing other silly things? The National Honor Society surely put on a swell "Truth or Consequences" program, didn't it?

The society was made up of students who received ~~B~~ average or better.

The leading members were: President, Shigeru Kawanami; Vice Prexy, Mas Higuchi; Secretary, Takako Nakahara; Treasurer, Mary Inouye; Advisor, Miss Hirata.





## XI BETA SIGMA

Left to right, First Row: Emiko Matsumoto; Mary Nagata; Chiye Nagareda; Betty Obata; Tomi Fukuda; Mae Kumada; Takako Nakahara; Second Row: Yeiko Baba; Miyo Sunago; Pauline Takahash; Sachiko Tanaka; Kimiyo Tamura; Aiko Deguchi; Eleanor Kushida. Third Row: Frank Yamamoto; Miyuki Mukai; Fumio Yamamoto; Harry Baba; Shig Kawanami; Mr. Sanematsu.

Xi Beta Sigma? What is the Xi Beta Sigma? The initials Xi Beta Sigma are from the Greek language, and stand for "College Bound Students." This club was organized to acquaint those students interested in receiving a higher education with the various colleges and universities in the country. Meetings featured such speakers as Dr. Ysuda, world famous among the Christians, who was a visitor at Poston at that time. The club also sponsored several movies during the year to establish a scholarship fund for worthy students.

The officers of the year for the first semester were: President, Iae Nakanishi; Vice prexy, Pauline Takahash; Treasurer, Sachiko Tanaka; Secretary, Mitsuko Kohatsu; Publicity Manager, Frank Yamamoto; Corresponding Secretaries, Mary Nagata and Tomi Fukuda; Advisor, Mr. Sanematsu. The second semester officers were: President, Harry Baba; Vice Prexy, Miyuki Mukai; Treasurers, Shigeru Kawanami and Sachiko Tanaka; Secretary, Fumiko Tateishi; Publicity Manager, Frank Yamamoto; Corresponding Secretaries, Betty Obata and Takako Nakahara.





## GIRLS' LEAGUE

Left to right- First Row: Iseko Nagato; Bernice Setsuda; Hiroko Nishida. Second Row: Pauline Takahash; Miyo Sunago; Irene Noda.

The Girls' League is a newly established organization, created in order to draw the girls of high school age closer together; to get the girls better acquainted; and to try to urge them to become more sociable. The first meeting was called to order by Miyo Sunago to elect officers for the new club. The resulting officers were Miyo Sunago, President; Irene Noda, Vice President; Pauline Takahash, Secretary; Bernice Setsuda, Treasurer; Hiroko Nishida, Publicity Manager; and Iseko Nagato, Yell Leader. Mrs. Fisher was chosen to be the club sponsor.

During the last few months of school, the Girls' League sponsored the "Skirt Session", picnics, hikes, and a fashion show.









## G.A.A.

Left to right- First Row: Mitsey Ohye; Mary Nagata; Frances Nishioka; Elaine Momita; Kikuko Yamamoto; Michiko Yokota; Ruby Wada. Second Row: Kazue Tsuchimori; Irene Noda; Eleanor Kushida; Miyo Sunago; Ruby Mori; Kinuye Itano. Third Row: Kikuye Ikuma; Aiko Nakamoto; May Hokama; Aiko Deguchi; Jeanne Kido; Setsuko Kobata; Florence Watanabe.

Did you see the girls on December fifteen with jeans and baby bibs, with dots of rouge, with horned rimmed glasses of eyebrow pencil and with lil' Abner shoes? Weren't they cute? What was going on? Just the G. A. A. initiation, that's all!

And did you ever see the girls playing? Basketball, softball, volleyball....Good enough to challenge the boys!

The aim of the girls was to learn to work with each other, to have a lot of fun, and to create school spirit. This organization was kept alive among the girls without a faculty advisor. For the first semester it was under the fine leadership of Ayako Sakamoto, who acted as President. The other officers were Shigeko Tsuchiyama; Vice President; Bernice Setsuda, Secretary; Kiyome Noguchi, Treasurer; Aiko Deguchi, Athletic Commissioner; Elaine Momita and Nobuko Fujioka, Yell Leaders; and Ruby Mori, Basketball Manager. For the second semester, it was under the fine leadership of Miyo Sunago, President. The other officers were: Mary Nagata, Vice President; Frances Nishioka, Secretary; Kiyome Noguchi, Treasurer; Aiko Deguchi, Athletic Commissioner; Elaine Momita and Mitsey Ohye, Yell Leaders; and Kazue Tsuchimori, Publicity Manager.





# A.C.S.

Left to right-First Row: Grace Nagata; Junko Kodama; Sue Ann Nakashima; Hisako Sumioka. Second Row: Yeiko Baba; Emiko Matsumoto; Haruko Onodera; Miss Patten. Third Row: Smiley Kail; Fujio Kazama; Frank Yamamoto; Harry Baba.

"I serve a risen savior, he's in the world today....." As we hear that song gradually fading away, we think of the organization as it gives a feeling of strength and unity, and in sympathy with what it believes.

Under the fine leadership of Harry James, Oops! (slipped) I meant Harry Baba, the president, this club has been very successful. The Vice President, Pete Izumi, certainly should have a pat on the back for leading many gay occasions. Yeiko Baba, too, did a fine job as Secretary Treasurer.

Say, did you attend the Christmas program at the new auditorium? The club certainly deserves a bow for participating in a skit. They also had a gala farewell party for Pete Izumi, a very active member who relocated. Fellowship meetings where they sang and had guest speakers were held on several occasions.

Miss Lora Patten, the advisor, is to be thanked for what she has done in order to make the organization a fine one.





## Jr. RED CROSS

Left to right- First Row: Grace Nagata; Hisako Sumioka; Mitsey Ohye. Second Row: Emiko Sakamoto; Kay Awaya; Takako Nakahara; Hanaye Hama.

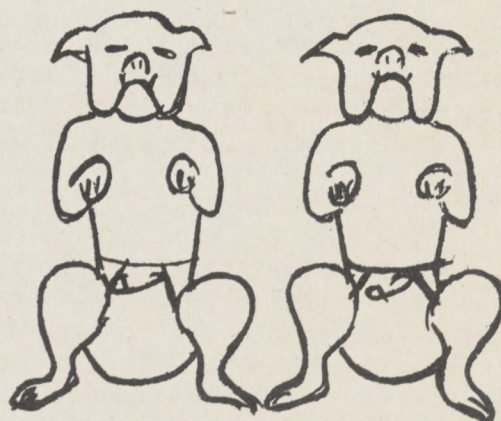
"Did you donate to the Junior Red Cross?"

Jr. Red Cross members were seen carrying tags around to see if anyone would donate. The results? The enrollment just about hit the 100% mark. Thoughtfulness and service were evinced when they made Christmas cards for the patients in the Poston City Hospital and the Phoenix Indian Sanitorium.

Mrs. Martha Longfellow, the advisor has worked harmoniously with representatives from each core class, and with the following cabinet: President, Betty Obata; Vice President, Florence Tamura; Secretary, Emiko Sakamoto; Treasurer, Florence Nakashiki; Publicity Manager, Grace Nagata.



# JUNIOR-KI



- MITSEY -





## JR. HIGH COUNCIL

Left to right- First Row: Rose Otsuki; Yukiko Sato; Setsuko Kobata; Helen Chikahisa; Jane Nakamoto. Second Row: Clara Shindo; Mae Maruya; Phyllis Hirata; Virginia Edlow; Grace Sawahata. Third Row: Hiroshi Nakamoto; Johnny Kinoshita; Tetsuo Matsumoto; Robin Nakabayashi; Gene Kitada; James Kobayashi.

The Junior High Student Body made preparations for the assemblies that were held, chose the school colors, blue and white, and did a very good job of preparing the joint assembly with the senior high while their advisor, Mrs. McLane was away.

The following are the members of the Junior High School Council: President, Gene Kitada; Vice President, Phyllis Hirata; Secretary, Fumi Kondo; Treasurer, James Hayashi; Yell Leader, Elaine Momita; Song Leader, Marion Tsula; Boys' Athletic Manager, Billy Tsuchiyama; and Girls' Athletic Manager, Setsuko Kobata.





EIGHT O'CLOCK



BOYS FIRST

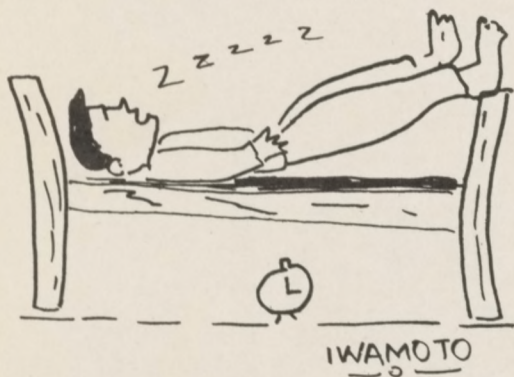


HAKWINS TOO





## Mc LANE 1-42



Left to right-First Row: Kazuko Sanamatsu; Rose Yonemoto; Tomiko Ikuma; Kazuko Fukawa; Setsuko Deguchi; Dorothy Hiura; June Hiura; Shoko Suzuki; Ruiko Uchimura; Sakako Iwamura; Clara Shindo. Second Row: Emiko Ito; Phyllis Hirata; Fumi Yoshida; Virginia Eddow; Jaruko Ito; Helen Tamura; Tsuyako Nakamura; Lillian Orida; Lillian Mitsunashi; Mary Kanimoto; Marcie Teshima; Nancy Mori; Setsuko Kobata; Mrs. McLane. Absent: Henry Arita; Harry Ito; Masami Iwamoto; Koichi Matsunaga; Paul Nishijima; Buddy Oba; Shig Oki; Tommy Sakai; Ray Saruwatari; Fred Shigemasa; Katsume Tawa.





Left to right- First Row: Helen Kajiyama; Hiroko Kawanami; Sadae Nishita; Grace Sawahata; Teruko Hamashima; Yasuko Yamaguchi; Mary Louise Kajitani; June Kawabe; Marion Tsuda; Helen Chikahisa; Elaine Momita; Sadako Tsuchimoto; Kazuko Nakata; Sumiko Murata; Mae Kawashima; Sue Ann Nakashima; Sumiko Fujimoto; Grace Nagahiro; Kiyome Tsuchimori. Second Row: Hiroshi Uchiyama; Jiro Tsuchimori; Yutaka Fujita; John Uchi-miya; Masao Fujii; Harry Inao; George Matsuno; Tommy Uyechi; James Sugimoto; George Seko; John Kato; George Oka; Billy Tsuchiyama; Harry Watanabe; Gene Kitada; Frank Takenaga; Jun Chino. Absent: Tsugiko Kawamoto.

## Mc LANE 3+4







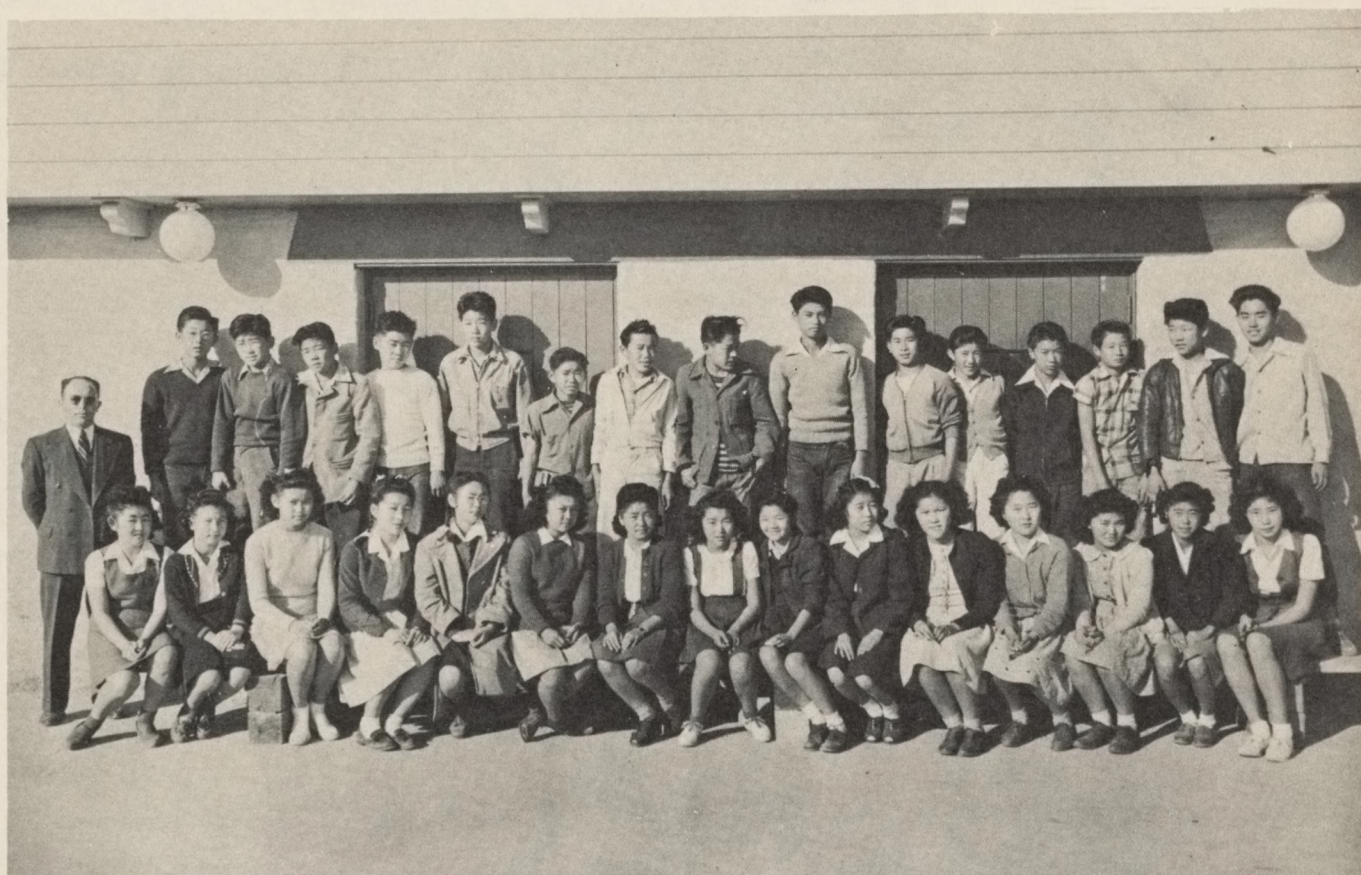
# Mc LANE 5+6

Left to right- First Row: Mrs. McLane; Shizue Shigaki; Florence Watanabe; Kathleen Watanabe; Fumi Hamai; Toyoko Miwa; Shiyoko Sakamoto; Yasuko Yamamoto; Chiyeke Hedani. Second Row: Johnny Kinoshita; James Hayashi; Billy Kato; Joe Wada; Tetsuo Matsumoto.



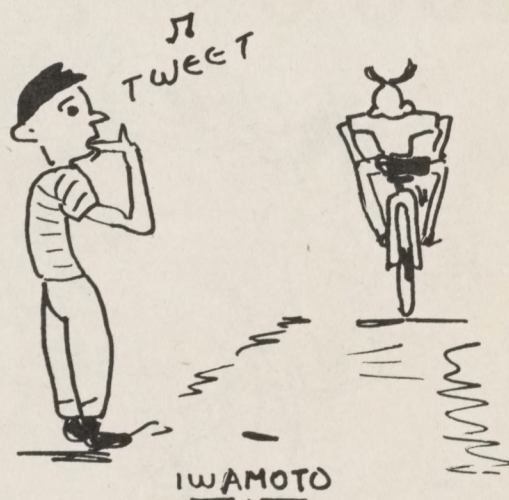
IWAMOTO





Left to right- First Row: Fumiko Ushiyama; Noruko Fujioka; Aiko Suzuki; Yoneko Miyamoto; Yoshiye Kawamoto; Olive Okutsu; Jayne Fujimoto; Mariko Sugita; Alice Fujimoto; Sally Nishioaka; Hiseko Otsuka; Grace Goda; Jane Enio; Fujiko Morinishi; Mae Maruya. Second Row: Mr. Kaig; Hisashi Nakamoto; Yoshio Akiyama; Raymond Yamada; Osamu Sugita; Isamu Morita; Ray Minami; Toru Imamura; Haruto Masutani; Tsukasa Shimizu; George Nakano; Tetsu Yamashita; Teruji Murakami; John Kadawaki; Jimmy Doi; Masashi Amano.

## KAIG'S 2+3







# KAIG'S 6+7



I DON'T FEEL LIKE GOING  
HOME.

IWAMOTO

Left to right-First Row: Miyoko Sano; Margaret Murakami; Nanako Sakemi; Emiko Kubota; Fumiko Inouye; Shizuko Tabuchi; Hideko Horiye; Fusako Kato; Michiko Maeda; Mary Yamashiro. Second Row: Toshio Sugita; Bob Murakami; William Hoiuchi; Samuel Uyeda; Edwin Yasukochi; Kenechi Iwaki; Kanami Okawa; Ben Torimoru; Thomas Sahara; Leo Hagiwara; Mr. Kaig.





Left to right-First Row: Rose Yoshida; Reiko Nishino; Yoshiko Itami; Helen Kurozumi; Anny Hori; Betty Fujimoto; Masako Kobashi; Masako Kitada; Kyoko Noguchi; Betty Yoshida. Second Row: Alice Taira; Sachiko Kazawa; Aiko Takata; Fumiko Sano; Michiko Iwaki; Evelyn Ishii; Margaret Ikemura; Keiko Tanaka; Lily Sakamoto; Miss Armstrong.

## ARMSTRONG'S 2-3



IWAMOTO





## ARMSTRONG'S 5+6



Left to right- First Row: Fusaye Kikimoto; Cherry Nakamura; Toshiko Kitagawa; Lily Yamaguchi; Yeshiko Yamamoto; Chiye Ishino; Sayoko Noritaki; Rose Matsubara; Shigeeko Oda; Tomi Matsuda; Shizuko Maruyama. Second Row: Lily Ikeda; Sumiko Imamura; Sumiko Sakamoto; Helen Yamaguchi; Mitsuko Yamaguchi; Taeko Yamaguchi; Larrie Nakazono; May Myagi; June Kato; May Nakatani; Rosie Isumi; Miss Armstrong. Third Row: Muneo Oye; Makoto Kowta; Kokki Shindo; Tetsuo Ueda; Takeshi Nakamura; Masao Tayosaki; George Ochi; Joe Kiyoteki; Fumie Tamura; Fred Kumagi; Ben Tamguchi.

IWAMOTO





Left to right- First Row; Kazuko Aoyama; Mary Fujii; Terry Ninomiya; May Ikeda; Mary Nishizawa; Grace Kato; Yukiko Sato; Rose Tani; Mary Ikuma; Junko Oda; Elizabeth Sugino; Mitzuko Kawamoto. Second Row: Frank Kamiya; Miss Wiseman; Yoko Tashima; Connie Yahiro; Tori Komatsu; Viola Uyeno; Sadako Kawanami; Fumi Kondo; Kisaye Iwamura; Terry Hirota; Tomiko Yanamoto; Chiyeke Iseda. Third Row: Robin Nakabayashi; Yoshio Oshio; Bobby Murata; Kazu Kato; Bob Nishi; Kazu Wada; Minoru Tateishi; Roy Imazu; Herbert Miyamote; Roy Mukai; Roy Kodama; Ken Akamatsu; Jim Fukuda; Johnny Sugita; George Miyata; Kenny Nishioka; Byron Okinaka; Danny Morimoto.

## WISEMAN'S 1+2







# WISEMAN 3+4



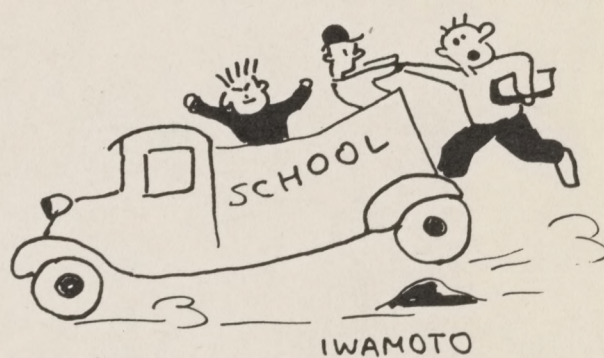
Left to right - First Row: Miss Wiseman; Yokko Tabata ; Mildred Shibata; Mary Higashi; Ruth Takanabe; Natsuko Okanishi; Irene Asaki; Fumie Fujimoto; Evelyn Takenaga ; Masako Ito; Haruko Yoshida; Chiyoko Matsui; Aiko Kawanami; Mary Ende. Second Row: Kite Kamage; Richard Otsuka; Frank Geteri; John Takii; Yoshie Kanagawa. Third Row: George Nishimeri; Fred Matsumoto; Yoshie Murata ; Jim Tsusaki; Richard Okane; Roy Okamoto ; Tometsu Sugimura; Bob Asatani; Bob Imamura; Munee Fujii; Joe Imagawa; Mas Seriguchi.





Left to right- First Row: Yaeko Abe; Anna Mochizuki; Mitzie Goto; Margaret Ueki; Youko Noritake; Eva Okamoto; Setsuko Oshio; Grace Takahashi; Marion Iwaki; Hideko Sato; Miyako Uyeji; Mary Nakamine; Joanne Torimaru; Michiko Mizutani; Kiyoko Uchimura. Second Row: Ko Nagareda; Bobby Joko; Senji Ozasa; Takashi Yamaguchi; Sakai Onodera; Haruo Kazama; Akira Murakami; Jimmy Nozaki; Jimmy Oka; Noboru Tanouye; Ken Okabe; Kaname Nishimura; Mas Matsuno; Kei Uyeda; Mrs. Brand.

# BRAND'S 2.3-4





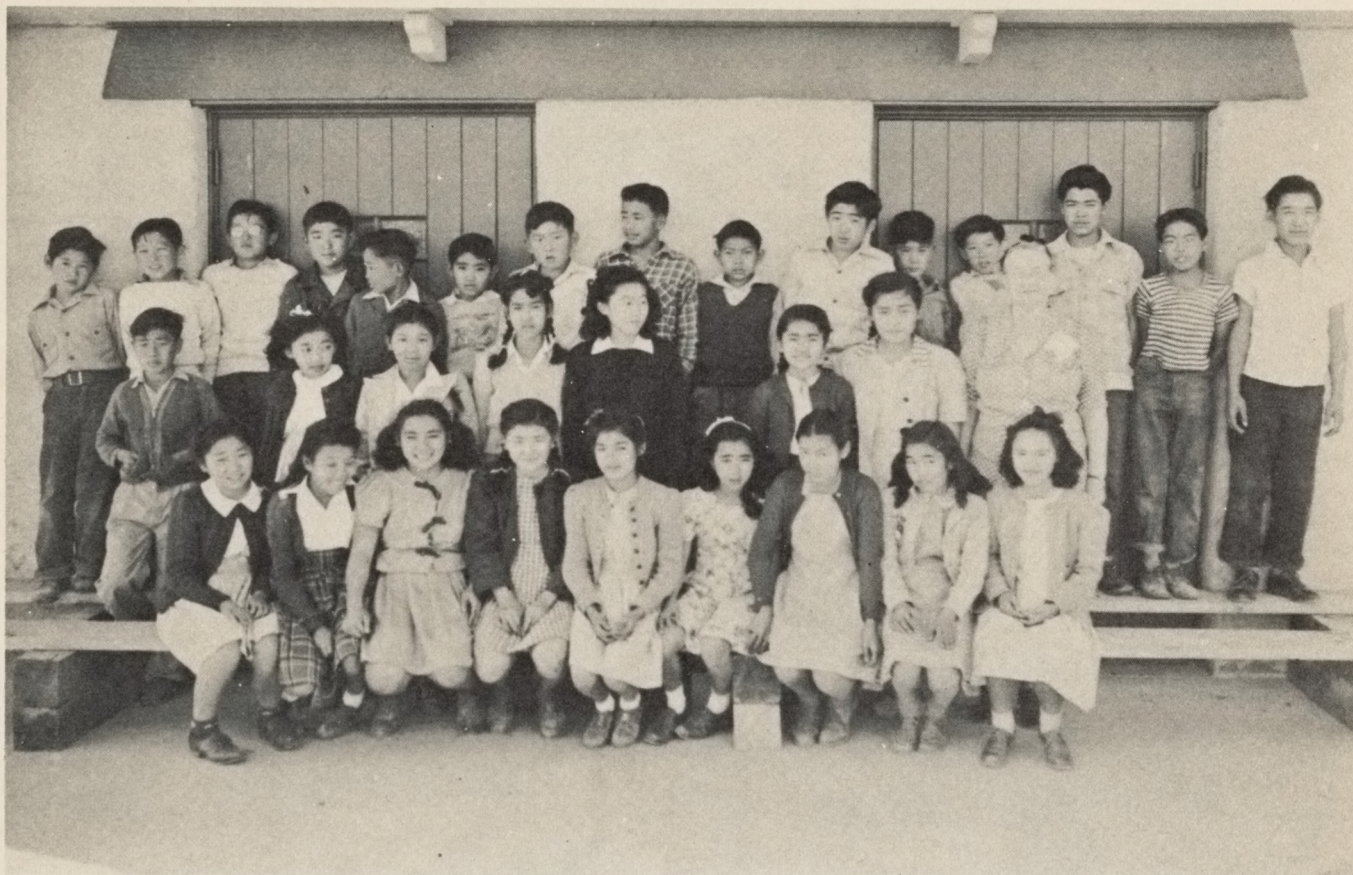


# JESSE'S 1,2+3



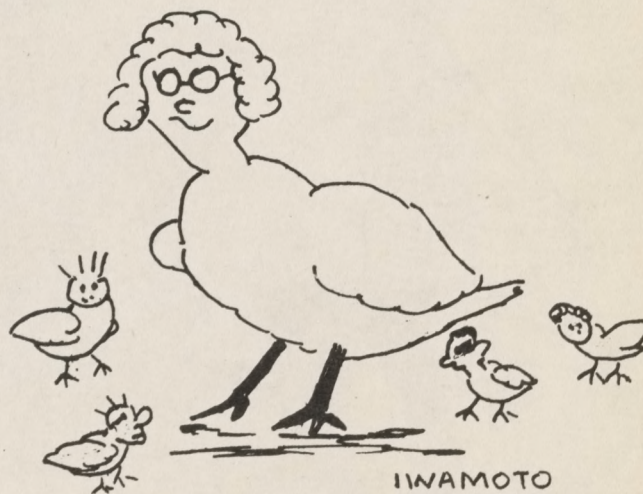
Left to right—First Row: Betty Fujimoto; Hisako Fukunaga; Amy Watanabe; Dorothy Okamoto; Jane Omori; Ayako Nakamoto; Ayako Shimokubo; Joyce Norisaki. Second Row: Ayako Oya; Mina Horikawa; Grace Murakami; Aiko Nomoto; Frances Uyeno; Janey Okimoto; Doris Ito; Ruby Nishioka; Iris Nakano. Third Row: Miss Jesse; Dickie Omoto; Edward Hori; Robert Sakaki; Richard Yamamoto; Yukio Nagata; George Fujimoto; Buddy Moritomo; Ronald Okinaka; George Obata; Hideo Omori; Teruyuki Mukai; Henry Chikahisa; Paul Togawa.





Left to right-First Row: Itsuko Mastu-  
no; Betty Ikeda; Takeko Miyagi; Masa-  
ko Seke; Junko Fujii; Margaret Nakama;  
Helen Nishino; Himeko Araro; Faye Ike-  
da. Second Row: Sachiko Takeda; Yukie  
Fujimoto; Akiko Taira; Atsuko Yokota;  
Roberta Nishimoto; Jane Nakamoto; Sac-  
hiko Ota; Miss Jesse. Third Row: Yosh-  
io Tsuchida; Yukio Tanaka; Hiroshi Fu-  
kunaga; Henry Nakatsukasa; Franklin Ta-  
naka; Fred Inouye; Herbert Teshika; Fr-  
ank Ichishita; Frank Miyana; Johnny  
Iwahsita; Stephen Yamamoto; Jimmy Ko-  
tow; Roy Honda; James Yamaoka; James  
Kobayashi.

## JESSE'S 5.6+7







# PENN'S 5,6,7

Left to right, First Row: Kathryn Tasaki; Alice Nishijima; Chizuko Sugita; Carmen Hirata; Kazuko Ikeda; Ruriko Nishino; Haruye Kikuchi; Itsuko Ikeda; Rose Fujioka; Agnes Goda. Second Row: Teru Shinn; May Nakashima; Miyeko Akiyama; Asako Masutani; Mrs. Penn. Third Row: Gene Oda; Gene Nagase; Eddie Gotori; Kiyoshi Kosaka; George Hokama; Masanobu Yamashiro; Robert Shimahara; Manabu Hirahara; Rowland Sakaki; Salvador Kajitani; Sei Furukawa.







## DESERT DAZE

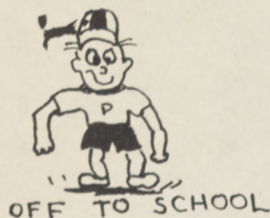
Left to right, First Row: Tomiko Yamamoto; Rose Tani; Mary Higashi; Mary Endo; Yohko Tabata; Natsuko Okanishi; Fumi Kondo; Amy Nagata; Masako Asamen. Second Row: Terry Hiroto; Miss Wiseman; Mary Fujii; Cheyeko Iseda; Ruth Takanabe; Evelyn Takenaga; Masako Ito; Fumie Fujimoto; Yukiko Sato.

People hurrying from desk to desk; a constant banging of the door; excited, tired, strained voices; and other queer noises greeted you whenever you entered Room 1 at four o'clock on a Tuesday afternoon. What was going on? Oh, just the girls trying to reach their deadline. The paper was to come out the following day and what had been done? Only two pages had been mimeographed. Two more to be run off! The headlines to be printed! Oh-h-h-h, Miss Wiseman, the advisor and her volunteer staff were on the verge of a breakdown just before every issue was scheduled. But....they always came through!



# SCHOOL

SEPT. 11



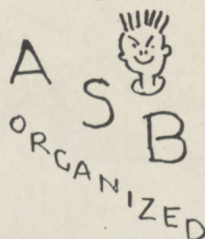
OFF TO SCHOOL

22



1<sup>ST</sup>. KAMPUS KRIER

26



ORGANIZED

29



OFFICERS CANDLE  
LITE INSTALLATION  
(JOINT JR. & SR.)

NOV. 1



ED CROSS  
DRIVE

11

VICTORY OVER CAMP II.  
14-12  
-0-



15

1<sup>ST</sup>. REPORT  
CARDS



HELP

17



POSTER  
CAMPAIGN

DEC. 15



A. A. INITIATION  
HA-HA

22



CHRISTMAS

ASSEMBLY

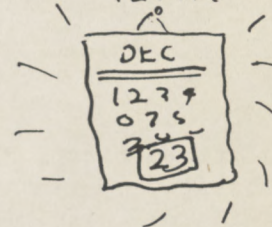
22



CAROL INN  
DANCE

23

JUNIOR PLAY  
ONCE A  
YEAR



26



GIRLS LEAGUE  
ORGANIZED

FEB. 16



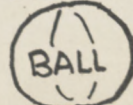
SOPHOMORE  
ASSEMBLY

PRINCE  
CHARMING

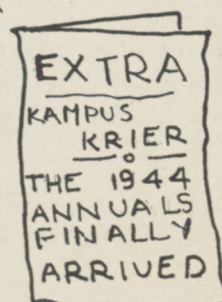
17



WOODCHOPPERS



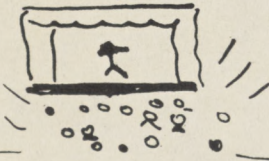
23





# CALENDAR

OCT. 11



FIRST A.S.B.  
ASSEMBLY! WHOPPER

27



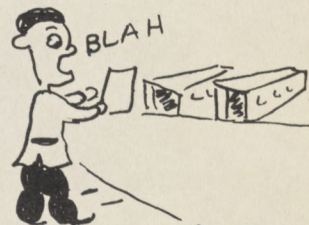
HALLOWEEN  
BROOM STICK  
DANCE

30



FIRST FOOTBALL  
PRACTICE

30



BLAH  
DEDICATION  
OF NEW SCHOOL

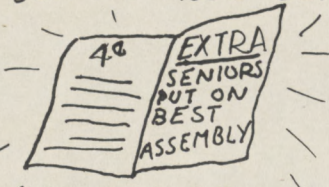
20

JUNIOR PLAY  
PRACTICE



22

SENIOR ASSEMBLY



TERRIFIC  
WOW

23



COLLEGE BOUND  
THROWS 1ST. SHOW

24



BOOKS  
MOVING TO  
NEW ADOBI  
SCHOOL

JAN. 12



BOO YAH  
GLEE CLUB ORGANIZED  
BY MR. MINAMI

20



OUCH  
SENIOR  
BANQUET

26



"KEI INOUE"  
NEW KAMPUS KRIER  
EDITOR

26



SOPHOMOR  
SWING

MAR. 31



SUN  
FLOWER  
COUPLES  
ONLY

JR & SR PROM

JUNE



JUNE GRADUATES

THE END



SO-LONG  
POSTON

BY AKIO IWAMOTO





RECESS



EVERYONE  
A QUEEN

## PATRONS

Dr. Arthur L. Harris  
Miss Winifred M. Acock  
Mrs. Olive S. Brank  
Mr. Arthur Branham  
Mrs. Melba Dennis  
Mr. Arthur Fisher  
Mr. John L. Girdler  
Miss Eva I. Jernigan

Mr. Norman Kaig  
Miss Donna Lepinskas  
Mrs. Naomi McLane  
Mr. Ralph Shapley  
Mr. J. C. Wardlaw  
Mr. Clayton Whitcomb  
Mrs. Vera Whitcomb  
Miss Mary Wiseman

---

Do not steal this annual, my lad,  
For \$\_\_\_\_\_ it cost my dad;  
And when you die, the Lord will say,  
"Where's the book you stole that day?"  
And if you say, "I do not know",  
The Lord will say, "Just step below!"





ME NEXT



G.A.A.

HOME-  
WORK?



POST AÑO, '44!!

SCAT, THE CAMERA!



WHY, MRS. SNELSON!





