

N 1.46.01

1 of 2

1943

67/14  
C





**VICTORIA**

**1943**



Jerome Rel Center

WAR RELOCATION AUTHORITY



CU<sup>o</sup>

N 1. 46



# VICTORIA

1 9 4 3

.....and so began the life  
we live today.....





The Students of Denson  
High School Present

VICTORY



RIIA



for

1 9 4 3



# FOREWORD

*Out of the night that covers me  
Black as pitch from pole to pole,  
I thank whatever Gods may be  
For my unconquerable soul.*

*In the fell clutch of circumstance  
I have not winced or cried aloud.  
Under the bludgeons of chance  
My head is bloody but unbowed.*

—Henley.

We are proud to present you with Denson High School's first annual, the VICTORIA.

Forced evacuation, unbounded sacrifices and heartaches, shattered dreams of the future—we have had no easy road. Yet with the assistance of people who still have faith in us and by our own will and faith in ourselves, our souls can remain unconquered.

In pictures and in words the Victoria has tried to tell a story of the young Americans of Japanese ancestry, who, having been caught in a web of misfortune, have adjusted themselves to prepare to meet their world.



# CONTENTS..

ADMINISTRATION

C L A S S E S

A C T I V I T I E S

BOYS' SPORTS

GIRLS' SPORTS

CLASS OF '43

A D V E R T I S I N G





# DEDICATION

Denson High School  
Denson, Arkansas  
JUL 29 5 PM 1943  
ARK

Cpl. Joe Uyeno 39016299  
Detachment Ordinance Dep.  
Fort Francis & Warren, Uyo.

High School  
Denson  
JUL 29 1943  
ARK

Post June Sano  
Hq. Co. 2nd Bn  
Camp Shelby, MS

"Give me your tired, your poor,  
Your huddled masses yearning to breathe free,  
The wretched refuse of your teeming shore.  
Send these, the homeless, tempest tost to me,  
I lift my lamp beside the golden door!"

Inscription on the Statute of Liberty—Our American Way of Life.

When the light of democracy was threatened, the American men of Japanese ancestry hurried to the defense of the United States of America along with their fellow-countrymen.

To these valiant defenders of the American way of life, we, the class of '43, dedicate this VICTORIA.

Denson High School  
Denson, Arkansas  
JUL 10 AM 1943  
ARK



MAIL

Sgt. Ray Umade  
2nd M.C. Detachment A.C.  
Camp Livingston,  
Louisiana

DEN SC 2  
JUL 12 10 AM 1943  
ARK

Clarence Yamamoto  
2100th Inf. Bn  
Helby



T. Sgt. Sieki Yoshimura  
Det. D.M. Corps  
Fort Sill, Okla.

AIR MAIL  
CENTRAL  
WHITE STATES

DENSON HIGH SCHOOL  
DENSON, ARKANSAS

DENSON  
JUL 22  
5 PM  
1945  
ARKANSAS

VIA AIR MAIL

Pvt. K TANIGAWA 30103614  
Hq. Co. 2nd PM. 442 INF. REGT.  
CAMP SHELBY, MISS

DEN 30  
JUL 10  
7 PM  
1945  
ARK



High School  
Columbia  
1945  
ARK

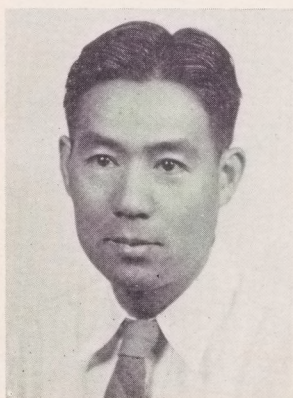
Cpl. H. Morimoto  
Hq. Det. 2nd  
Fort Leonard



James Swanson  
Det. Rec. Center  
Fort Sill Okla  
U.S. Army

D.S.





Mr. Henry Y. Sugimoto, who contributed the above painting, is one of the most distinguished Japanese artists in the United States. Among the many honors he has won are the first prize from the San Joaquin League of United Artists and a gold medal at the San Francisco World Fair. His paintings have been exhibited throughout the nation as well as abroad, in France, Italy, Japan, and Mexico.



# ADMINISTRATION







Project Director, Mr. Paul A. Taylor, has directly and indirectly done much for the welfare of our school.

Our Principal, Dr. Carl F. Hankins, has achieved much for Denson High School with his ever friendly, sympathetic, and helpful character.

Much credit is given him for the high standard which Denson has attained.







Mr. Amon G. Thompson, Superintendent of Schools at Denson, directs Education at Jerome Relocation Center, helping with individual and student body problems.



Never too busy to help students, Mr. William F. Hays, our Assistant Principal, is one of the main cogs of school life and activities.

His helpful attitude has increased much school spirit and scholarship among students.





Row 1: John Anders—Math, Pauline Austin—Music, Laura Green Beasmore—Social Science, Margaret Bernstorff—General Science, Marie Cash—Social Science.

Row 2: Grace Dilday—English, Adabell Hays—English, Robert Head—Music, Ellen Jones Henderson—Social Science, Sadako Hibama—Art, Mary Kasai—Music.



Friendliness and eagerness to help are the two outstanding characteristics of Miss Beryl Henry. Miss Henry is the curriculum adviser of the education department in Denson.

F A C U L T Y





Row 1: Sam Matsumoto—Music, Elizabeth Ann McCuistion—Social Science, Mary E. Moore—English, Yukiye Mori—Sewing, Ernest Nishinaka—Industrial Arts.

Row 2: George Norikane—Physical Education, Eldon M. Okada—Mathematics, Jewel Palmer—Home Economics, Eugene Parker—Auto Mechanics, Alma Leon Reed—Science, Troy Reed—Industrial Arts.

Energetic Miss Minnie Lee Mayhan is the advisor of the Student Council as well as being the vocational advisor to Denson High School.

Thanks to her, many students were able to relocate themselves in colleges and universities.



F A C U L T Y



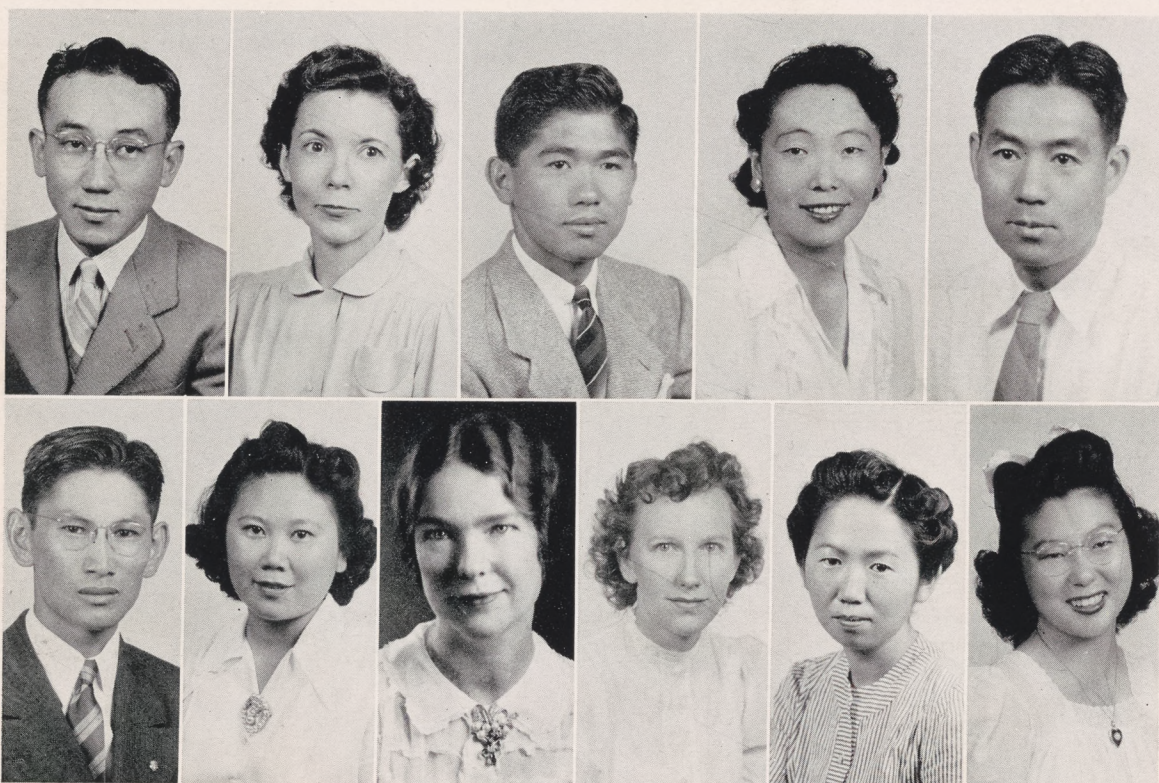
# F A C U L T Y

*Pictures of the following faculty members were not available:*

Erva Haselden—Librarian, Clara Takigawa—Cosmotology, Paul Shimokubo—Math., Amy Kato—Crafts, Arthur Nakahara—Social Science, Robert Kimura—Science, Young Osburn—Science, Anna Gray—Home Economics, Mildred Nishimoto—Home Economics, Minoru Endo—Math., Chiyeko Matsuka—Social Science, Terry Yemoto—Home Economics, Ira Shimasaki—Shop, Kenney Nakaoka—Social Science, Takashi Morita—Agriculture, Setsuko Morimoto—Typing.

Row 1: Howard K. Renge—Social Science, W. G. Ruff—Social Science, Yonekazu Satoda—Commercial, Chiyo Seto—Commercial, Henry Sugimoto—Art.

Row 2: Tom Shimasaki—Mathematics, Fumiko Suda—Sewing, Virginia Tidball—English, Esther Tucker—Commercial, Fumiyo Wakimoto—Art, Sumi Watanabe—Commercial.





# F A C U L T Y



Row 1: Dorothy Webb—Social Science, Gladys Williams—English, Mary White—Physical Education.

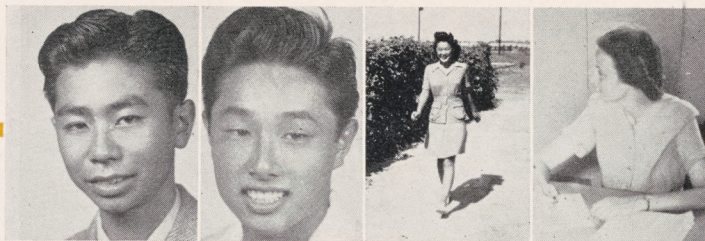
Row 2: Masao Yata—Mechanical Drawing, Hiroshi Kusakai—Physical Education, Tokiye Sakai—Sewing.

Row 3: Corinne Key—English, Etta Neal Mayhan—English, Vance Martin—Social Science, Ellen Morrow—English.

Group picture of office force: Naomi Tagawa, Marion Imamoto, Violet Ogata, and Aiko Iwanabe. Mrs. Sachi Toshiyuki and Sue Minakami who were with the office for nearly the entire year are not pictured here since they left for other positions before pictures were completed.



# STUDENT COUNCIL



Jimmy Arakaki, president; Nori Nitaoka, vice-president; Ginger Ikeguchi, secretary-treasurer; Miss Minnie Lee Mayhan, sponsor.

Functioning ever efficiently, the Student Council has been the pacemaker of school activities at Denson High. Organizing in May and "starting from scratch," the members drew up a Constitution which was ratified by the Student Body, and from that they have progressed to their present active coordinating body.

Enormous credit is to be given to Jimmy Arakaki, president; to the other officers; to each member; and to Miss Minnie Lee Mayhan, advisor and organizer of this very important group.

*In the opposite posed picture, the members are as follows:*

## Row 1:

- 7-A Representatives: Midori Arimura, Kazuko Matsumoto, Joh Sekiguchi, Rosaline Yoshida.
- 8-B Representative: Yukio Osako.
- 8-A Representatives: Shogo Iwatsuru, Fujiko Kojima, George Sakata, Jessie Yokota.
- 9-B Representative: Janet Matsuda.

## Row 2:

- 9-A Representatives: Thomas Inami, Misao Izumi, Chikara Masai, Amy Sasaki, Jess Tanaka, Katsuko Tsuji.
- 10-B Representative: Hiroshi Mori.
- 10-A Representatives: Misa Asakawa, Yuki Mayehara, Masaki Teraoka, Dorothy Yamaguchi.
- 11-B Representative: Shoph Horie.

## Row 3:

- 11-A Representatives: Ginger Ikeguchi, Ben Honda, Ruth Nagata, Tom Uyemura, Junn Shibata, Marge Nakamura.
- 12-B Representatives: Mary Kubota, Akiko Shiotani.
- 12-A Representatives: Nori Kitaoka, Toshio Uyeda, Jimmie Arakaki.

*The picture below shows the student council at a regular weekly meeting.*

















*Well, when do we eat?*



*May graduates receiving diplomas.*



*Campus Co-ed Ona Mae Koda (fourth from the left) and her attendants.*





*Mr. Sugimoto and his art class.*



*Hurry or you'll be tardy!*

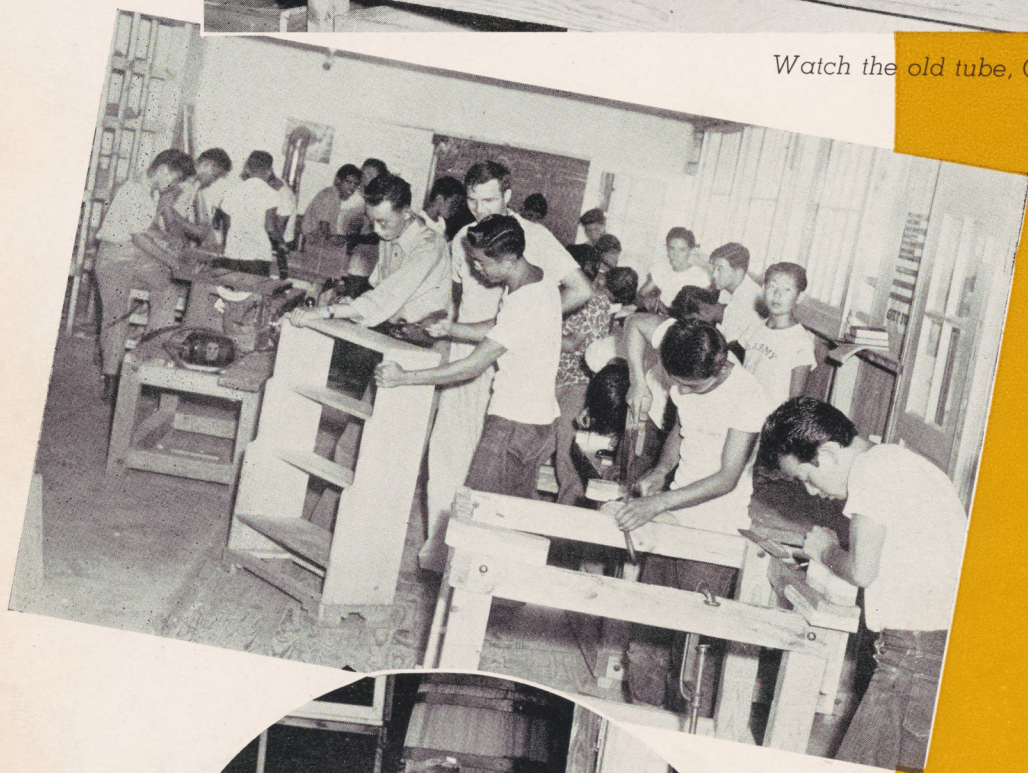


*I pledge allegiance to the  
flag . . . . .*





Watch the old tube, George.



Jack of all trades.



Whew! Ice water here



# CLASSES







Above are pictured some of the Senior Class officers who led their respective classes in a very active and successful year.

Senior A's: George Nakashima, president; Fuku Sato, vice-president; Masako Nobuto, secretary, and Yoshiaki Motokane, treasurer.

Senior B's: Henry Tsuruoka, president; George Ichiba, vice-president; Kazumi Yamashita, secretary; Haru Nakanishi, treasurer; and Min Shintaku and Mary Kubota, athletic managers.

# SENIOR CLASS



# SENIORS

## JIMMY ARAKAKI

*Central Union High School—Fresno, Calif.*

Student Body President, Business Manager of Victoria, Honor Society, CSF, Pro and Con Club.

## GRACE ARIMURA

*Lemoore High School—Lemoore, Calif.*

CSF, Band, Forum Club, Girls League, Journalism Club, Condensor, Quill and Scroll.

## FUMI ASAKAWA

*Caruthers Union High School—Caruthers, Calif.*

CSF, Orchestra, Mixed Chorus, Class Officer, Girls League, GAA, Girls Glee, Basketball All-Star Member.

## CHIZU DOBASHI

*Madera Union High School—Madera, Calif.*

Sequoia Club, Home Economics Club.

## MICHIKO DOI

*Caruthers Union High School—Caruthers, Calif.*

Home-making Club, Commercial Club, Basketball All-Star Member.

## EMIKO FUKANO

*Hanford Union High School—Hanford, Calif.*

Spanish Club, Honor Society.

## UTAKO FUKUDA

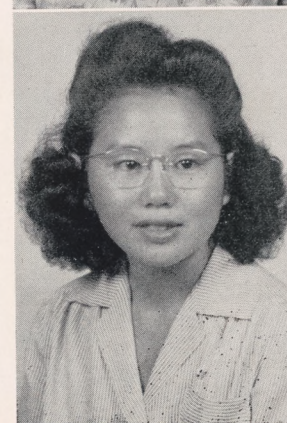
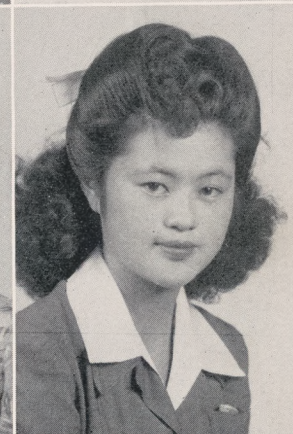
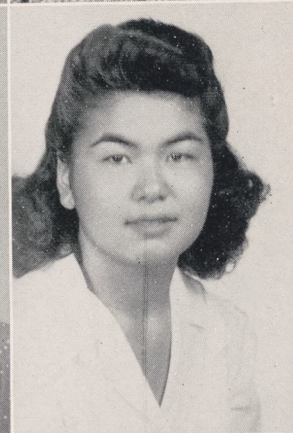
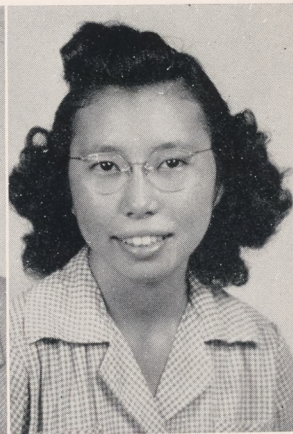
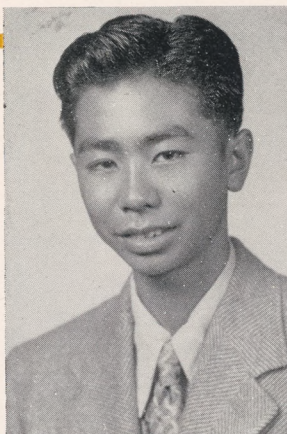
*Hanford Union High School—Hanford, Calif.*

Girls League.

## SHIZUKO FURUKAWA

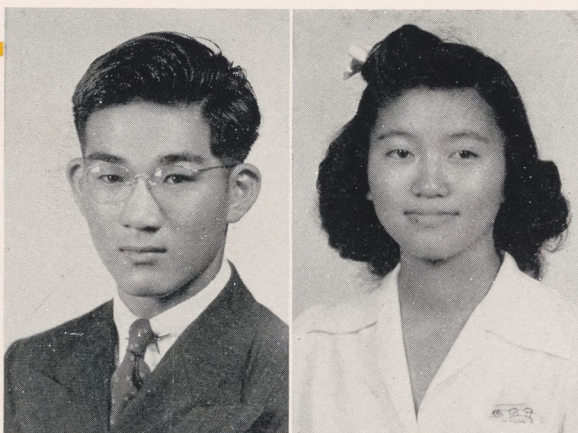
*Hanford Union High School—Hanford, Calif.*

Latin Club, Ama Lux, Janus Staff, Condensor, Journalism Club.





# SENIORS



GEORGE HAMADA

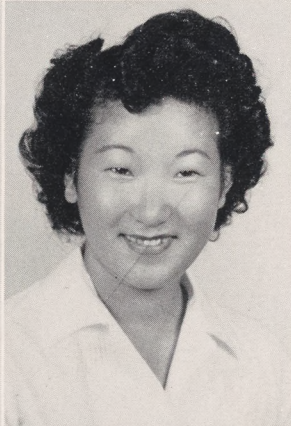
*Narbonne High School—Lomita, Calif.*

World Friendship Club, Japanese Club, Navigation Club, Track Team, B Football, Journalism Club, Condensor Staff, Quill and Scroll, Victoria Business Staff.



AKIKO HIGAKE

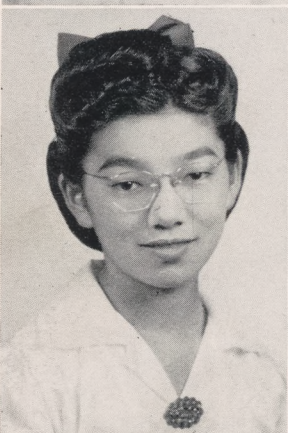
*Alameda High School—Alameda, Calif.*  
CSF.



YOSHIKO HIRAHARA

*Madera Union High School—Madera, Calif.*

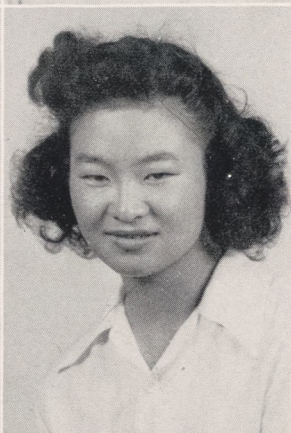
CSF, Pan American Student Forum, Commercial Club.



TSURUKO HIRAMI

*Excelsior Union High School—Norwalk, Calif.*

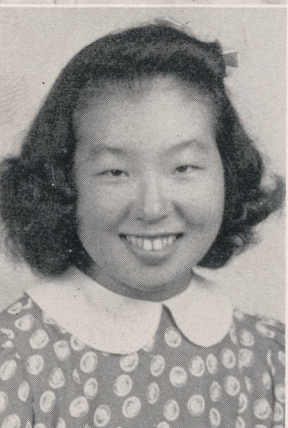
Glee Club, Journalism Club, Voice Club, Modern Dancing Club.



TOSHI HOSHIKO

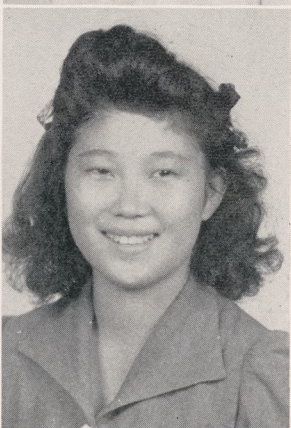
*Caruthers High School—Caruthers, Calif.*

Commercial Club, Home-making Club, CSF, Girls League, Majorette of School, Drill Team, Honor Society.



KIKUKO HIWANO

*Hanford Union High School—Hanford, Calif.*  
French Club.



MAY HORIE

*Hanford Union High School—Hanford, Calif.*

ETSUKO IKEDA

*Konawaena High School, Kona, T. Hawaii*

Girls Reserve, Girls Scout, Journalism, Gregg Writers, Better English Club.



ALICE SETSUKO IMAMOTO

*Excelsior Union High School—Norwalk, Calif.*  
Scholarship Society, French Club, Latin Club,  
Accompanist for Choral Groups, Electric Organ.

LILY INADA

*Live Oak Union High School—Live Oak, Calif.*  
Glee Club.

BETTY KAGAWA

*Roosevelt High School—T. Hawaii*

MICHIKO KIMURA

*Mid-Pacific Institute—Honolulu, T. H.*  
Girls Reserve.

NORI KITAOKA

*Excelsior Union High School—Norwalk, Calif.*  
B Football, C, B Track, Lettermen's Club, Japanese Club, Student Council, Student Body Vice-President.

KATSUMI MASADA

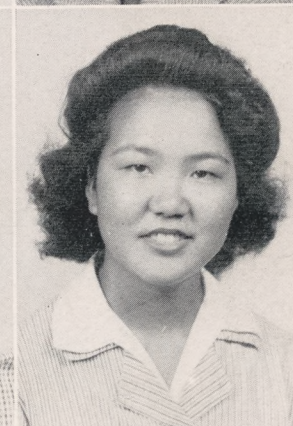
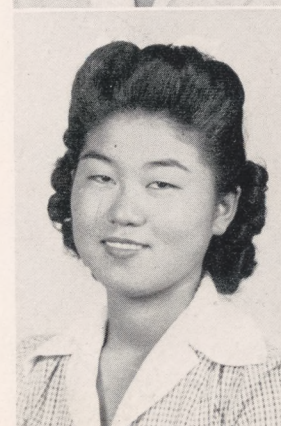
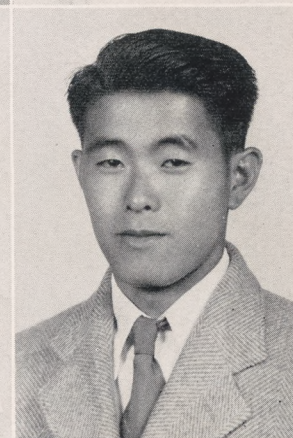
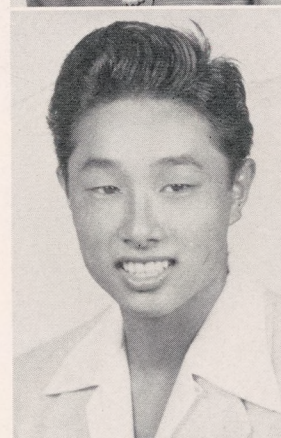
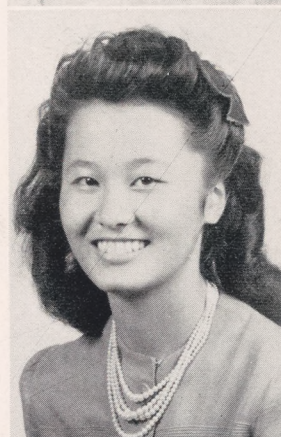
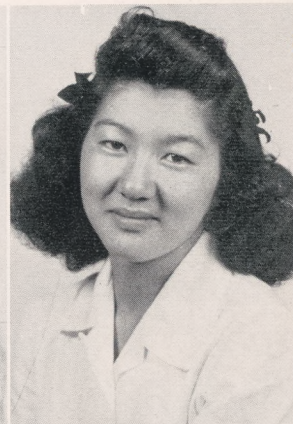
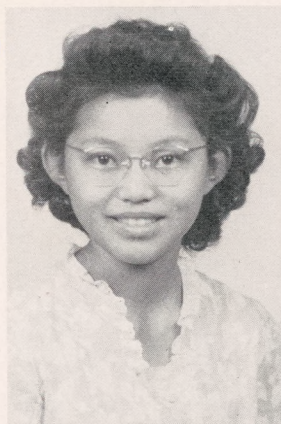
*Caruthers Union High School—Fresno, Calif.*  
Future Farmers of America.

JANE MATSUBARA

*Central Union High School—Fresno, Calif.*  
Junior Red Cross, GAA.

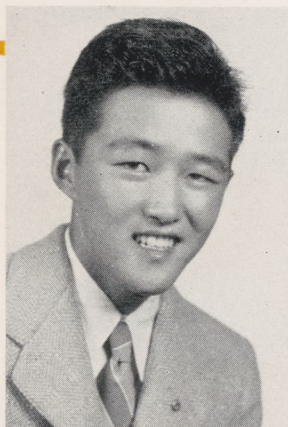
TERUKO MATSUFUJI

*Hanford Union High School—Hanford, Calif.*  
Spanish Club, Home Economics Club.





# SENIORS



YOSHIAKI MOTOKANE

*Salinas Union High School—Salinas, Calif.*

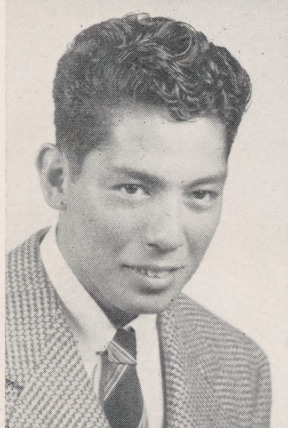
CSF, Japanese Students Club, Officer, Victoria Assistant Business Manager, Senior Class Treasurer, Honor Society.



LILY YURIKO NAGATANI

*Delano Union High School—Delano, Calif.*

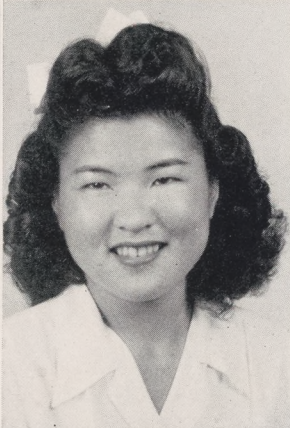
CSF, GAA, Girls League, Orchestra, Latin Club, Honor Society, Victoria Business Staff.



GEORGE NAKASHIMA

*Long Beach Polytechnic—Long Beach, Calif.*

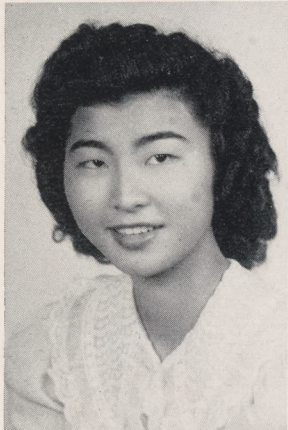
Senior A Class President, Senior B Class President.



MASAKO NOBUTO

*Polytechnic High School—Los Angeles, Calif.*

GAA, Japanese Club, H. R. Treasurer, Senior A Secretary, Campus Coed Candidate.



MISTUYE NOMURA

*Washington Union High School—Fresno, Calif.*

Home Economics Club Secretary, Girls League, GAA, Commercial Club.



KIYOMI OGAWA

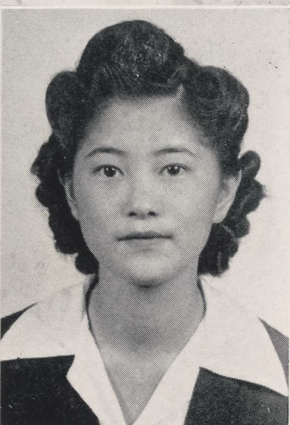
*Kerman High School—Kerman, Calif.*

Scholarship Society, Junior Red Cross, Senior Red Cross, GAA, Girls League, Pan-American Club.



SARAH OKADA

*McKinley High School—Honolulu, T. H.*



KAZUMI OKIMOTO

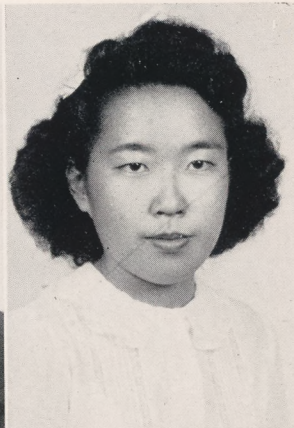
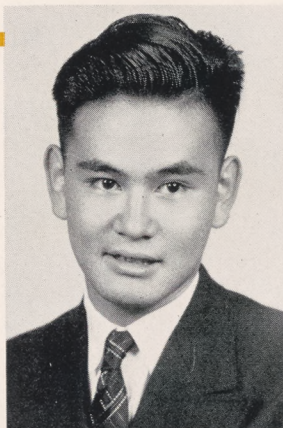
*Washington Union High School—Easton, Calif.*

Junior Red Cross, Science Club, Girls League.



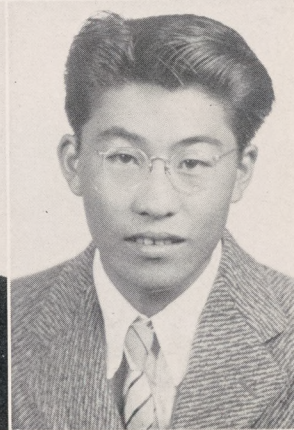
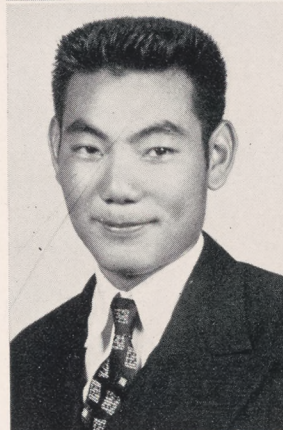
JIRO OYAMA

*Roosevelt High School—Los Angeles, Calif.*  
Aldebrans (Honor Society).



MARIKO SAHARA

*John H. Francis Polytechnic High School—  
Los Angeles, Calif.*  
GAA, Organist Guild.

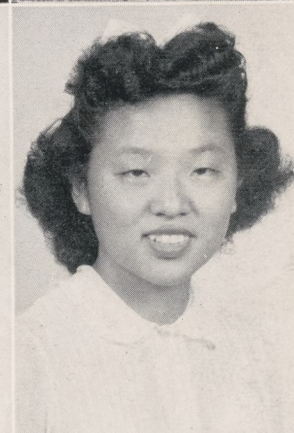


ROYAL KUMPEI SAKANIWA

*Long Beach Polytechnic High School, Long  
Beach, Calif.*  
Football, Cross Country, Track, Friendship Circle, German Club, Crew.

KENNETH SAKATA

*Central Union High School—Fresno, Calif.*  
Track Team, Football Team, Hi-Y Club.

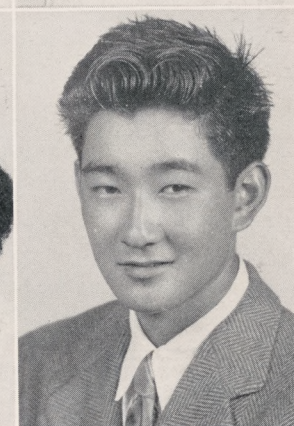
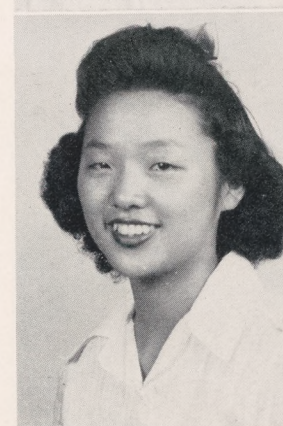


TOKIYE SAKAMOTO

*Kerman Union High School—Kerman, Calif.*  
Scholarship Society, Girls League, GAA, Pan-American Club, Honor Club.

FUKUKO SATO

*Los Angeles High School—Los Angeles, Calif.*  
GAA, Victoria Business Staff, Class Vice-President.



YUKIKO SATO

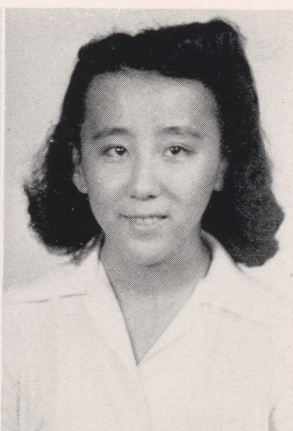
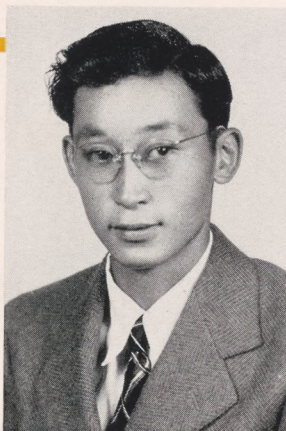
*Los Angeles High School—Los Angeles, Calif.*  
GAA, Victoria Business Staff.

TOM HIROSHI SHIBUYAMA

*Redondo Union High School—Redondo Beach,  
Calif.*  
Baseball Team, Japanese Club.



# SENIORS

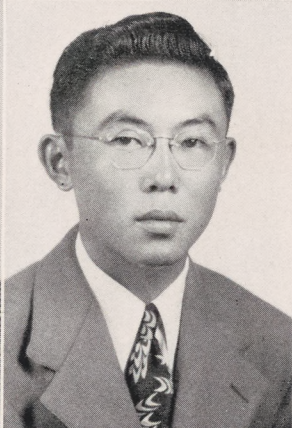
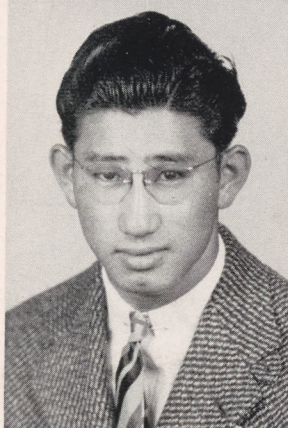


KAZUO SHIMAZU

*Nathaniel A. Narbonne High School—Lomita, Calif.*

AIKO TAKAGI

*Fresno High School—Fresno, Calif.  
Girls League.*



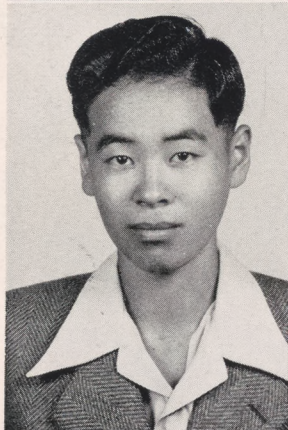
SUZUO TAKESHITA

*Nathaniel A. Narbonne High School—Lomita, Calif.*

*Scholarship Society, Yell Leader, Track Team, Japanese-American Citizens Club.*

FRANK TOKUMOTO

*Hanford Union High School—Hanford, Calif.  
C, B, Basketball, B Football, Class Officer.*

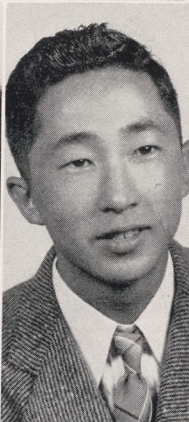
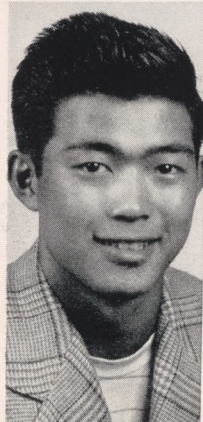


KIYOSHI TSUJI

*Central Union High School—Fresno, Calif.  
California Scholarship Federation, Condensor Staff (Business Manager), Quill and Scroll.*

JEANETTE HARUKO TOYAMA

*Fowler Union High School—Fowler, Calif.  
International Friendship Club, Journalism Club, Basketball, Condensor Assistant Business Manager.*



HENRY TSURUOKA

*Fresno High School—Fresno, Calif.  
Class President, A Basketball.*

YOSHIKO TSUTSUI

*Hanford Union High School—Hanford, Calif.  
Home Economics Club, Spanish Club.*

SHOZO URUSHIMA

*San Luis Obispo High School—San Luis Obispo, Calif.  
Basketball, Tennis, Victoria Business Staff.*



TOSHIO UYEDA

*Redondo Union High School—Redondo Beach, Calif.*

Honor Society, Journalism Club, Editor of Condensor, Quill and Scroll, Victoria Staff, Student Council.

NOBUO WATANABE

*Coalinga Union High School—Coalinga, Calif.*

Football, Basketball, (Manager), Varsity Club.

HELEN TAMIKO YAMAMOTO

*Caruthers Union High School—Caruthers, Calif.*

California Scholarship Federation, Basketball.

KATSUKO YAMAMOTO

*Polytechnic High School—Long Beach, Calif.*

California Scholarship Federation, Scribbler's Club.

GEORGE YAMANA

*Thomas Jefferson High School—Los Angeles, Calif.*

Latin Club, B Football.

AKIKO YAMANAKA

*Hanford Union High School—Hanford, Calif.*

Orchestra, National Honor Society, Journalism Club, Condensor Staff, Quill and Scroll, Editor of Victoria.

JOHN YOGI

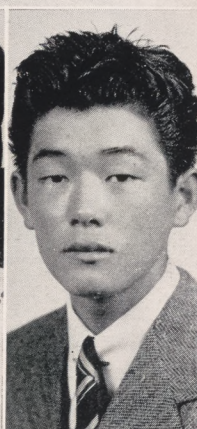
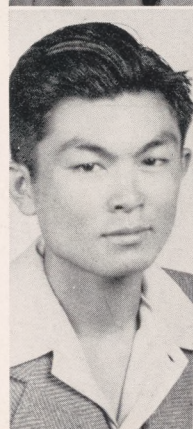
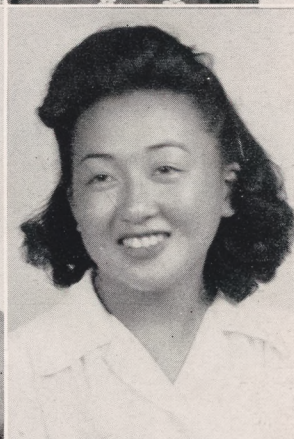
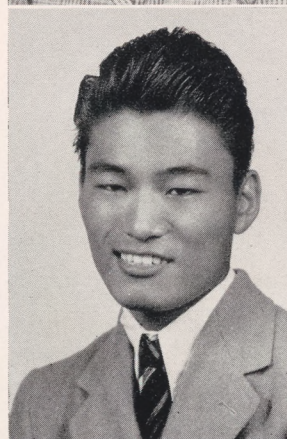
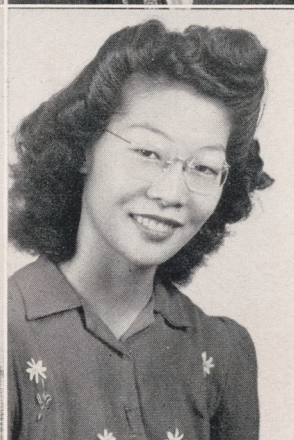
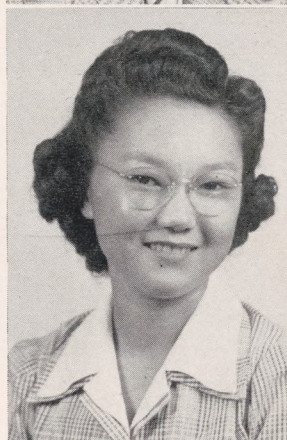
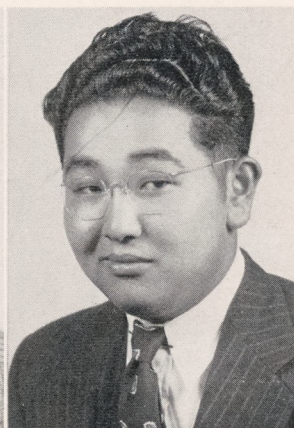
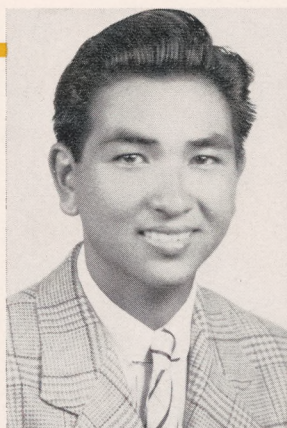
*Delano Joint Union High School—Delano, Calif.*

KIYOKO YOSHIOKA

*Polytechnic High School—Long Beach, Calif.*

NORITSUGU UYENO

*Phineas Banning High School—Wilmington, Calif.*  
Portlight Staff.





CLARA HASEGAWA  
*McKinley High School  
Honolulu, T. Hawaii*

TADATO HIGASHI  
*Long Beach Polytechnic High  
School, Long Beach, Calif.*

STELLA HAYASHIDA  
*Baldwin High School  
Territory of Hawaii*

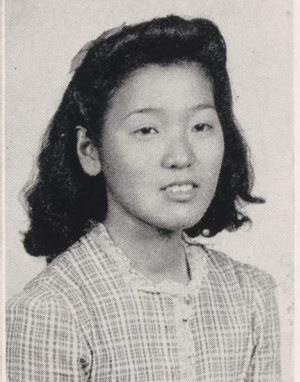
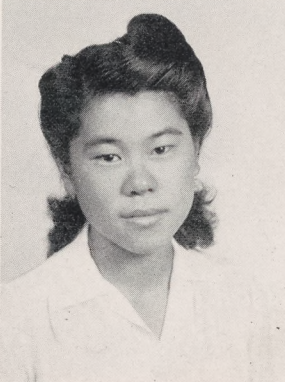
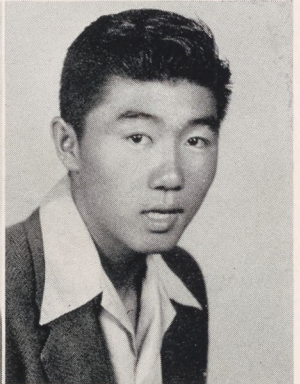
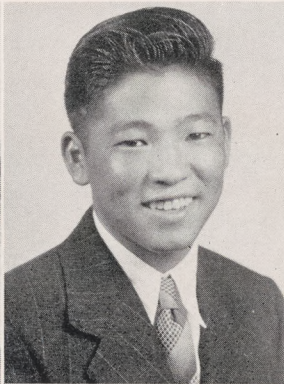
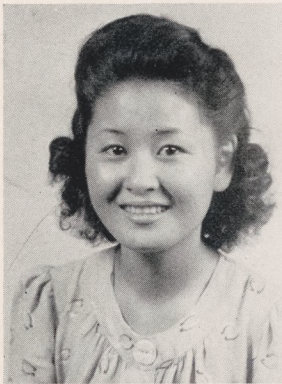
GEORGE ICHIBA  
*Fresno High School,  
Fresno, Calif.*

YURIKO INOUE  
*Elk Grove Union High School,  
Elk Grove, Calif.*

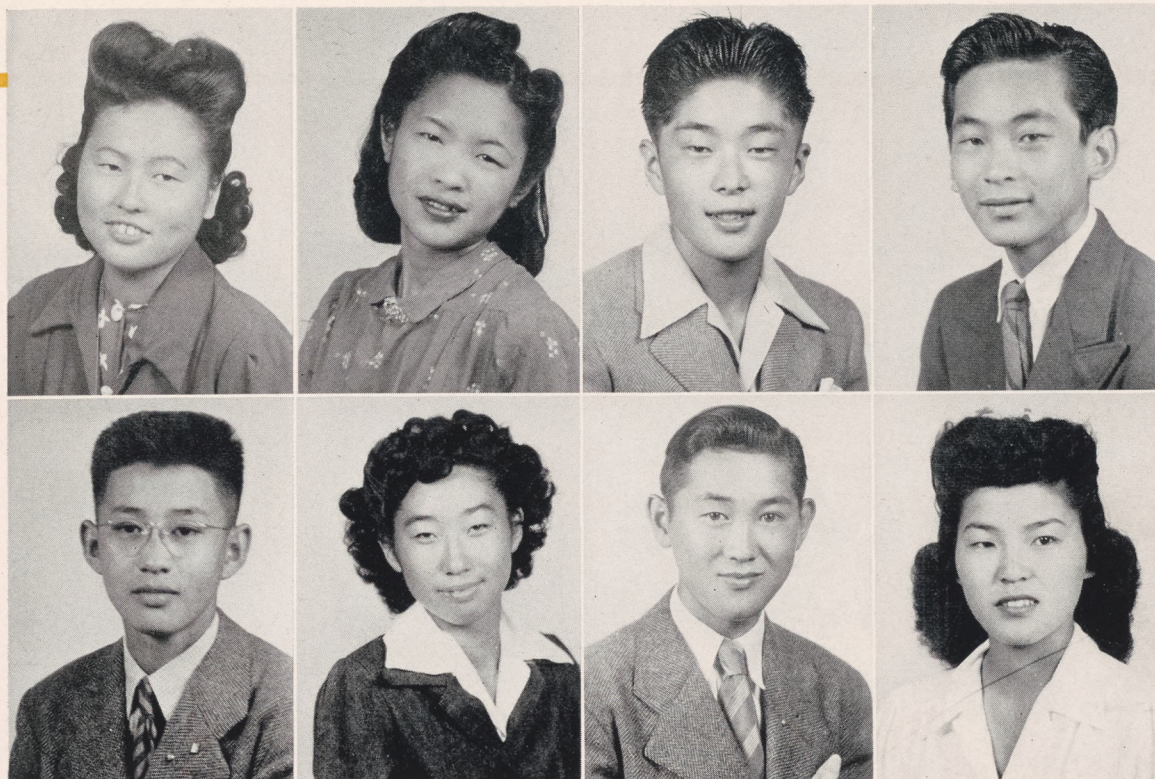
YAYOI KAWADA  
*Redondo Union High School,  
Redondo Beach, Calif.*

YASUKO KAKISHITA  
*San Pedro High School,  
San Pedro, Calif.*

ASAKO KAWAMURA  
*Waimea High School,  
Territory of Hawaii*







EIKO KIKKAWA

*N. A. Narbonne High School,  
Lomita, Calif.*

IKURO KINISHI

*L. A. Polytechnic High School,  
Los Angeles, Calif.*

CHIYEKO KIMURA

*San Pedro High School,  
San Pedro, Calif.*

STANLEY KITAJIMA

*Kohala High School,  
Territory of Hawaii*

SAKAE KOMATSU

*Fresno Tech High School,  
Fresno, Calif.*

HIROSHI MAYEDA

*N. A. Narbonne High School,  
Lomita, Calif.*

MARY KUBOTA

*N. A. Narbonne High School,  
Lomita, Calif.*

SHIGEKO MINAMI

*N. A. Narbonne High School,  
Lomita, Calif.*

SENIOR B



# SENIOR B

TADASHI MURANAKA

*Phineas Banning High School,  
Wilmington, Calif.*

JITSUO NAKANO

*McKinley High School,  
Territory of Hawaii*

HARU NAKANISHI

*Roosevelt High School,  
Los Angeles, Calif.*

KATSUTO NAKANO

*Fresno High School,  
Fresno, Calif.*

EDWARD NIIMI

*Wailua High School,  
Territory of Hawaii*

MICHIKO ODATE

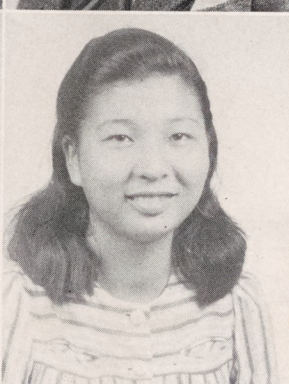
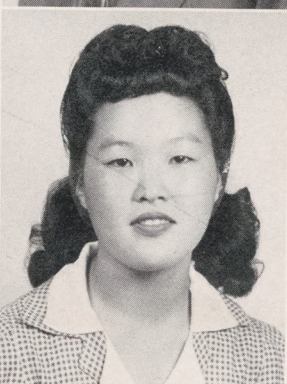
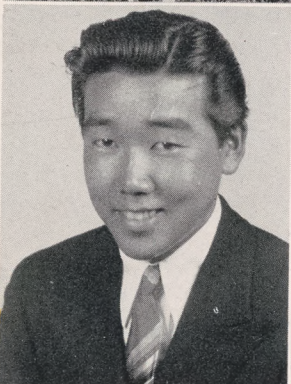
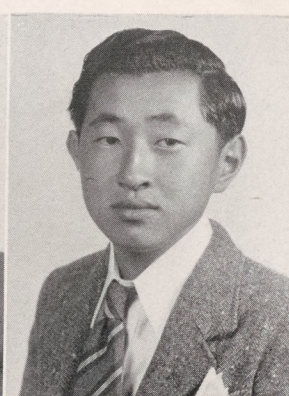
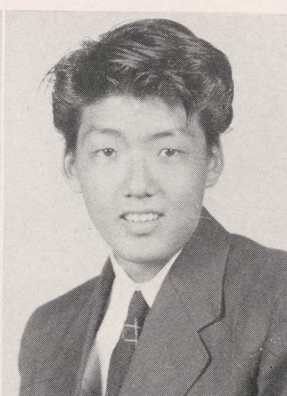
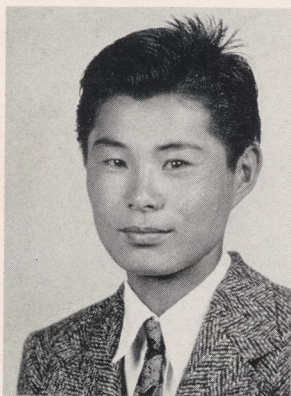
*Waimea High School,  
Territory of Hawaii*

JEANNE NISHIMOTO

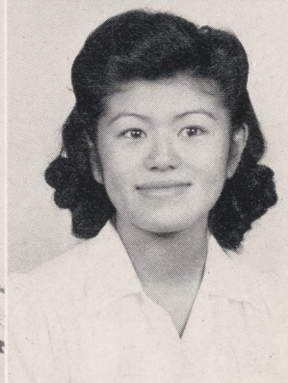
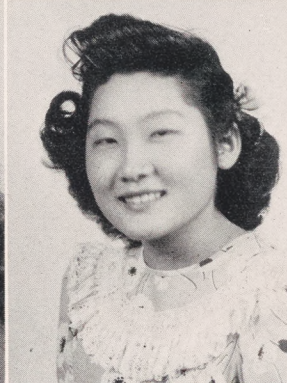
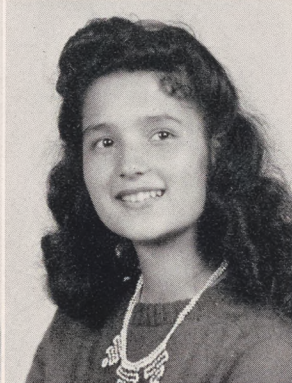
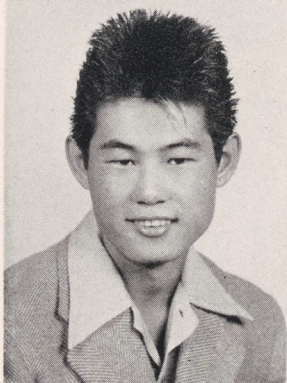
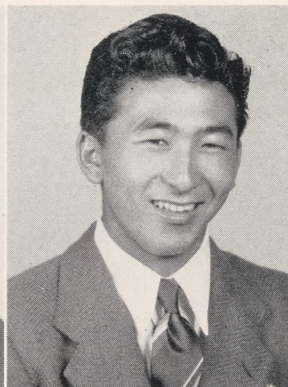
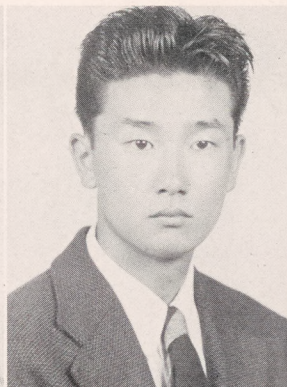
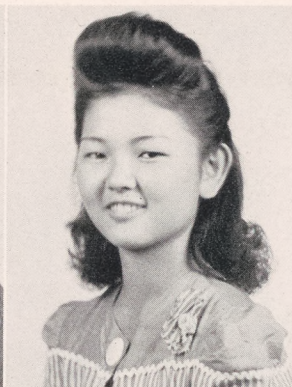
*N. A. Narbonne High School,  
Lomita, Calif.*

MARIE OHTA

*L. B. Polytechnic High School,  
Long Beach, Calif.*







MISAO OKA

*Banning High School,  
Wilmington, Calif.*

KAY OSAKO

*Washington High School*

AILEEN OKUMOTO

*Honokaa High School  
Territory of Hawaii*

MINORU SHINTAKU

*N. A. Narbonne High School,  
Lomita, Calif.*

SHINTO SAKAMOTO

*Torrance High School,  
Torrance, Calif.*

MARION SUGIUCHI

*L. B. Polytechnic High School,  
Long Beach, Calif.*

AKIKO SHIOTANI

*Hilo High School,  
Territory of Hawaii*

MARY SUGAMURA

*San Pedro High School,  
San Pedro, Calif.*



# SENIOR B

GLADYS SUZUKI  
*Mid-Pacific Institute  
T. Hawaii*

JIMMY TANAKA  
*Fresno High School,  
Fresno, Calif.*

RONALD TAKAHATA  
*Konawaena High School,  
Kona, T. Hawaii*

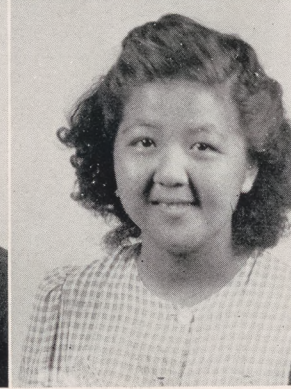
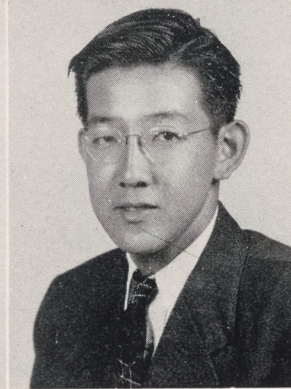
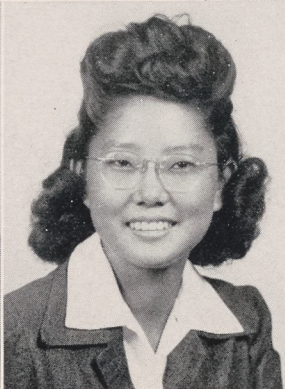
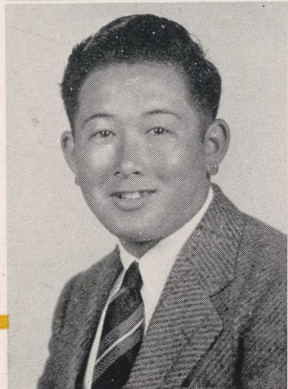
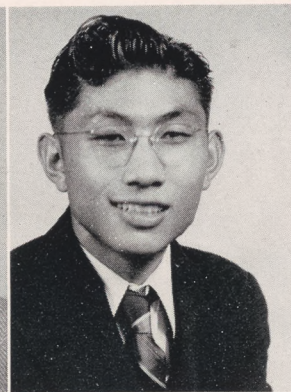
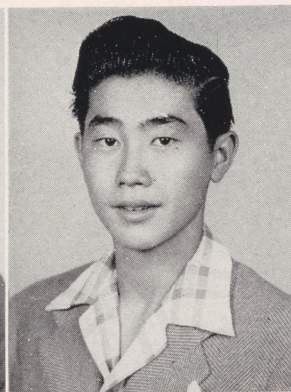
GEORGE TSUCHIDA  
*Linden High School,  
Linden, Calif.*

CALVIN UEDA  
*Torrance High School,  
Torrance, Calif.*

MACKAY YOSHIMURA  
*McKinley High School,  
Honolulu, T. Hawaii*

KAZUMI YAMASHITA  
*Phineas Banning High School,  
Wilmington, Calif.*

YOSHIKO YOSHIMURA  
*McKinley High School,  
Honolulu, T. Hawaii*





# JUNIOR CLASS

Leading the Junior class this semester were: Johnny Sakaizawa, president; Shoph Horie, vice-president; Marge Nakamura, secretary; Paul Omatsu, treasurer; Amy Yoshinaga and James Tsutsui, athletic managers.







ROW 1: Chizuko Kodama, June Nikaido, Alma Fukuda, Sachiko Takagi, Esther Nagao, Kiyoko Sanbongi, Taeko Mikami, Doris Soraoka, Kimiko Okahata.

ROW 2: Bob Kiino, Masami Sakomoto, Howard Matsumura, Carl Uyemura, Toshiro Yamanaka, Tadao Uchi, Mitsugi Fukuda, Harry Masai.

ROW 3: Bob Nakagawa, Calvin Nakaji, Harry Miya, Shig Igarashi, Eugene Sugiyama, Tom Umeda, Kobai Kuroda, Shig Shimotani, Hiroshi Tabata.

# JUNIORS



# JUNIORS

ROW 1: Takako Iwamoto, Sumiye Unno, Flora Doi, Isoko Enokida, Margaret Ikeda, Sumie Nakaoka, Mabel Miyosaki, Agnes Minamide.

ROW 2: Hatsuyo Margaret Shiimori, Ruth Sakaoka, Jane Taniguchi, Yoshiko Tanaka, Kay Izuhara, June Matsuzaki, Shizue Kumai, Marie Sakai.

ROW 3: Akira Taniguchi, Harry Hiram, Seichi Harada, Sakaye Ogata, Joe Inami.







ROW 1: Sally Nagata, Beverley Yoshimine, Fujiye Yoshioka, Umeko Aoki, Inez Yoshida, Fumi Yoshida, Nancy Utsunomiya, Sumiko Miyama.

ROW 2: Fumiko Asaki, Florence Masai, T. Kono, Marion Fujimoto, Ruth Nagata, Takeko Arata, Sadae Imai, Ritsuko Okumura.

ROW 3: Toshiro Yamanaka, Chuichiro Ishida, Ken Fukuda, Tatsuo Kawahara, Harvey Kitaoka, Tatsuo Iida, Shiro Ego, Tadao Uchi, Frank Horiuchi.

# JUNIORS



# JUNIORS

ROW 1: Janice Kunishige, Toshiko Uyemura, Frances Yoshihara, Sadako Sumida, Nobu Nakayama, Sue Sasaki.

ROW 2: Tomiko Yoshida, Masako Ninomiya, Matsuye Nishi, Helen Gotan, Amy Kabashi, Amy Yoshinaga, Akiko Fujita.

ROW 3: Masako Kawano, Toyoko Omachi, Julia Shimosaka, Shigeko Masuda, Yoshiko Nii, Marge Nakamura, Miyoko Kunitake, Shizuko Sasahara.







ROW 1: Yoshi Hanashiro, Anna Sakaizawa, Sadako Kobayashi, Miyeko Ideta, Chizuko Takamine, Sue Miyata, Masaye Morihiro.

ROW 2: Eiko Hirahara, Masako Fujii, Teruko Kanamoto, Sachiko Kawaoka, Ginger Ikeguchi, Mary Aoto, Kazuko Tsubouchi, May Mizusaki.

ROW 3: Joe Yokomi, Bob Oriba, Tom Sumida, Junn Shibata, Bob Kawahara, Harvey Kitaoka, Tom Nakaoka, Tom Sakaguchi, Frank Horiuchi.

# JUNIORS



# JUNIORS

ROW 1: George Sanwo, Jimmie Hosoda, Jack Urabe, Hideo Doi, Tom Nakayama, Tom Goto, Goro Tahara, Yoshio Nakashima.

ROW 2: Takuo Hosoda, Tosh Okada, George Tomita, Toshio Taniguchi, Kyoichi Yagi, Ben Honda, Jim Furukawa, Sam Shimasaki.

ROW 3: Chuichiro Ishida, Kenji Fukuda, Kazuma Takemoto, Ben Tagami, B. J. Wada, Johnnie Adachi, Minoru Yasumura, Takeshi Hitomi.

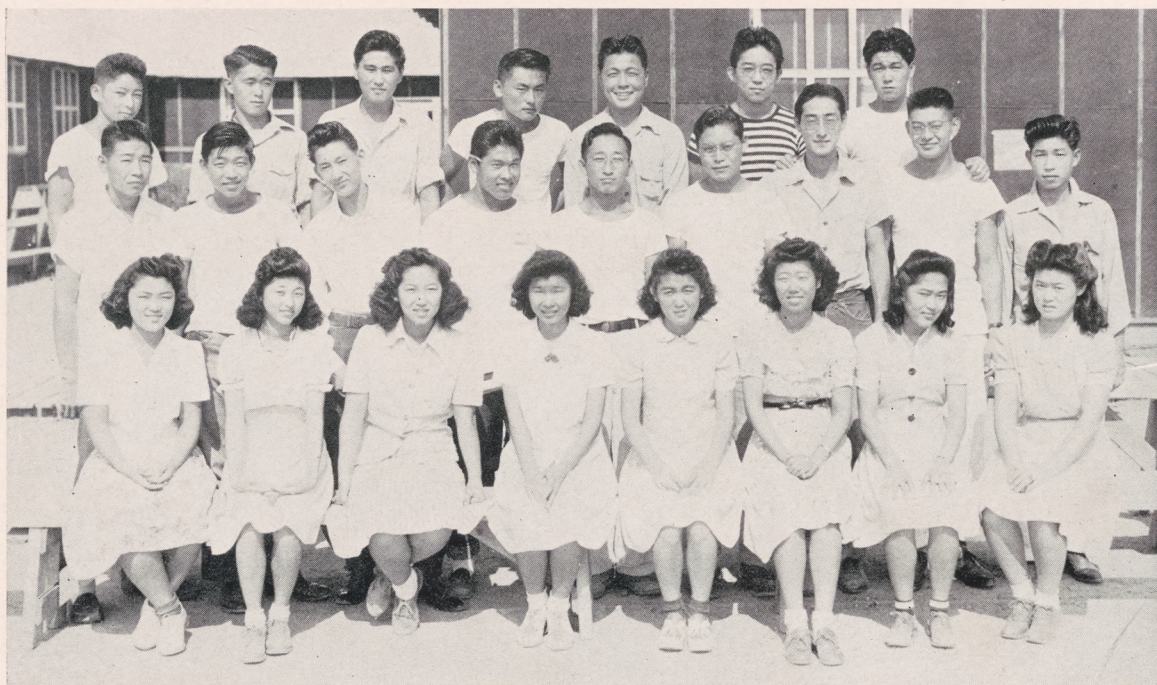
ROW 4: John Sakaizawa, Roy Mori, Kouji Arihara, Tom Uyemura, Kaname Matoi, Masaru Yokoyama.







ROW 1: Teruko Odate, Alice Nakazawa, June Arakawa, Lily Niimi, Ellen Masagatani, Sumie Ochici.  
 ROW 2: Teruko Taketa, Shigeko Kumamoto, Masako Saisho, Mitsue Shino, Shizu Mori.  
 ROW 3: Betty Kashiwabara, Hanako Kawaguchi, Mary Yamane, Tsuneko Kirita.



ROW 1: Yukio Imai, Grace Imahara, Pheobe Ichinaga, Fusako Kunimoto, Peggie Kawanishi, Jane Tahara, Sumiko Nakagawa, Phyllis Nojiri.  
 ROW 2: John Mayeda, Ray Mitsuyoshi, Ben Tagami, Harvey Kitaoka, Harry Uneda, Tatsuo Iida, Paul Omatsu, Junn Shibata, Sam Uyeda.  
 ROW 3: Sam Honda, Katsumi Masada, Isami Otsuki, Yoshito Matsubara, Seichi Harada, Jim Tsutsui, Jim Kishiyama.



SOPHOMORE



CLASS







ROW 1: Nobuko Yamagata, Lillian Fukuda, Terry Tsubokawa, Sarah Kimura, Betty Omoto, Ethel Shiotsu.

ROW 2: Satoko Kamikawa, Betty Shiroishi, Meri Nakama, Miwako Hata-shita, Sumi Sahara, Masako Hirata.

ROW 3: Howard Urushima, Osamu Okumura, Tad Yamakido, Joe Arata, Shiro Murata, Tomokazu Yumiba, Haruo Yonemura, Tommy Shibata.

ROW 4: Jack Tabata, Kike Tanouye, Chatt Horie, James Ando, Satoshi Oekawa, Kenichi Matsunaga, Frank Tanaka.

ROW 1: Mitsie Kira, Mutsuyo Uyeno, Shizuye Omotani, Kayoko Shimazu, Rinko Shimasaki, Yoshiko Hirahara, Matsuye Arase, Aiko Asaki.

ROW 2: Marian Sakaguchi, Pearl Kobata, Clara Yamaguchi, May Yogi, Sue Taniguchi, Rosie Tomita, Kay Mibu.

ROW 3: Eizo Arakawa, Takuichi Ishii, Sam Torigoye, Akira Tanouye, William Mizusaka, Yasuo Watanabe, Firmin Murakami.

ROW 4: Morio Marubayashi, Harry Fujikawa, Hameyoshi Hirami, Henry Yoshida.

ROW 1: Beatrice Kondo, Aiko Masada, Mitsie Kira, Kay Uyekawa, Lorraine Maruki, Nobuko Endow Shiyoko Ishii, Jane Kodama.

ROW 2: Misa Asakawa, Rosie Kimura, Rubie Kawanishi, Ona Mae Koda, Margaret Oka, Sachiko Kimura, Martha Aragaki.

ROW 3: Roy Shimazu, Roy Nagatani, Richard Higashi, Frank Miya, Joe Hamade, Kaz Jofuku, Paul Negoro, Tomie Masai.

ROW 4: Paul Kodama, Shemi Yagi, Seikyou Hanashiro, Shig Inahara, John Masai, Toshihiko Fukano, Akira Iwamoto, Akio Mukai.

## SOPHOMORES







ROW 1: Yuriko Yoshioka, Akiko Nakanishi, Teruko Mitsui, Daisy Hamataka, Hisako Yokota, Toyo Hase, Yoshiko Tomita, Junko Aoto, Margaret Adachi, Teruko Akiyama, Yaeko Sakaniwa, Etsuko Osako.

ROW 2: Motokazu Yokoyama, Iku Nishikawa, Patsy Okada, Bernice Kanenaga, Setsu Kishiue, Rosie Tsukamoto, Mitzi Matsunaga, Yuki Mayehara, Jane Hiwano, Shigeko Takaki, Sadame Murakami, Teruko Nakagawa, Kazuko Yamamoto.

ROW 3: Ben Isogawa, Hiroshi Senda, Yoshio Ushiro, Shorge Masuda, Chauncey Mamana, Kengi Yasumura, Kiyo Norikane, Kazuyoshi Takeda, Jimmie Hiwano, Ray Yamagiwa.

ROW 4: Bill Miyamoto, Tom Naito, Jack Kitahata, Max Kawano, Jack Mori, Harry Fujikawa, Mits Miyakawa, Kai Okada, Tadao Adachi, Yoshitaka Hara, Thomas Yoshida, Akira Tsutsui, Ray Nakagawa, Kusu Nakamichi, Arthur Abe, Kenneth Hori.

ROW 1: Grace Nitta, Evelyn Yomogida, Sumiko Watanabe, Mizuye Arihara, Mae Okura, Takeyo Arase, Bessie Fujinaga, Aiko Outa, June Ozaki, Setsuko Okumura, Grace Mayeda.

ROW 2: Fumiko Sugamura, Etsuko Nakagawa, Hazel Nishimura, Dorothy Yamaguchi, Chizuko Shikuma, Teruko Nishi, Natsuye Okahata, Mary Murakami, Masako Ohashi, Clara Sawada.

ROW 3: Tad Nakawaki, Billy Wakasa, Kenneth Noma, George Odaka, Bob Nakashima, Roy Nishimura, Yukio Takatsuka.

ROW 4: Ken Norikane, Isawo Otsuki, Masaki Teraoka.

---

## SOPHOMORES

---





ROW 1: Michiko Iida, Mary Kai, Mayko Kawashima, June Kagawa, Dorothy Aoki, Yoshiye Kawaguchi, Lillian Kuwahara.

ROW 2: Dollie Nagai, Rosey Nishikawa, Sachiko Nakayama, Geraldine Yamamoto, Eleanor Tanaka, Haruye Saisho, Tamaye Yumiba, Miyoko Yamane, Kazuko Shiotani, Kazuko Nomura.

ROW 3: Robert Hayashida, Stanley Hayashida, Harry Ishii, Masaharu Hayashi, Masami Kawamura, Wilfred Komori, Akimichi Kimura, Masaji Kawanishi, Henry Horie, George Hasegawa, Tomi Matsumoto, Shiro Ama.

ROW 4: Minoru Mayeda, Henry Michihara, Mas Moriyama, Ken Osaki, Tamotsu Nakagawa, Herbert Tomiyasu, Bert Nakano, Tetsuro Suzuki, Akira Muranaka, Hiroshi Mori, Ben Shimazu, Tetsuyuki Sakamoto, Mike Murakami, Shozo Nakano.

---

## SOPHOMORES

---



# FRESHMAN CLASS







ROW 1: Sueko Yamasaki, Betty Nakagawa, Hisa Nishimura, Akiko Muroi, Helen Sawai, Katsuko Tsuji, Alice Asato, Amy Sasaki, Jean Mori, Meako Ichnokuchi, Makiko Shikuma.

ROW 2: Michiko Ego, Yoshiye Tsubota, Aiko Takemoto, Mae Takeuchi, Harue Higashi, Irene Takata, Edith Shintaku, Takako Shiimori, Mary Maeda, Katherine Takemoto, Sally Sato.

ROW 3: Yoshio Ideta, Masuji Hata, Sam Gotan, Tom Yonemura, George Takeda, Mitsuru Tanaka, Tommy Sugamura, Kiyoto Imai, Johnny Yamada, Henry Matsumiya.

ROW 4: Jess Tanaka, Tom Sugimoto, Tsutomu Takahata, Toshio Shimamoto.

# FRESHMEN





ROW 1: Akiko Ninomiya, Alice Okimura, Mary Yoshida, Emiko Ishizaki, Setsuko Higake, Mary Watanabe, Harumi Sakomoto, Mary Lou Wakasa.

ROW 2: Dorothy Uyeda, Annabell Nekomoto, Rosie Miyama, Michiko Sakoda, Jane Tanaka, Marie Ohta, Ruli Nagao, Misao Izumi, Kimiko Niino, Shig Nakayama.

ROW 3: Akira Nakagawa, Katsuji Hirahara, Jim Tanigawa, Bob Nokamura, Shoji Sugahara, Ben Furukawa, Morito Nii, Tsuneo Fujita, Kei Koga, Richard Okada.

ROW 4: Hajime Miyagishima, Harry Adachi, Tommy Torigoye, Masato Fukuda, Donald Yamashiro, Kunio Yamashita.



# FRESHMEN

ROW 1: Keiko Matsubara, Frances Urabe, Reiko Odate, Betty Nobayashi, Fusaye Yoshida, Grace Mizoguchi, Mary Uyeda, Muriel Nishimura, Karen Kataoka, Haruko Tokumoto.

ROW 2: Katherine Kuwada, Tsuneko Mayeda, Helen Uyeda, Alice Kodama, Helen Kaneichi, Tayeko Matsunaga, Irene Takeshita, Akimi Yokomi, Michiko Tempo.

ROW 3: Delmer Uyemura, Ray Tanihara, George Ohashi, Kazuji Saisho, Akio Tomono, Masaji Teraoka, Ken Kanase, George Yonemura, Eddie Ushiro, Dick Mayewaki.

ROW 4: George Yamada, Ben Kimura, Yasuo Mayeda, Katsumi Yoshioka, Masuji Kimura, Don Takahama, Moriyasu Yamagata, Chikara Masai, Eddie Makimoto, Robert Kakiuchi, Manabu Minami, Sammie Matsufuji.





ROW 1: Dolly Hirohata, Yachiyo Iwashita, Takako Tanaka, June Suetomi, Frances Hirata, Toshiko Tagashira, Edith Fujikawa, Teruyo Arakawa, Sadaka Kuratomi, Yaeko Chakuno.

ROW 2: Ruth Hase, Yukiko Hirano, Ida Arimura, Fujiko Hatake, Lorraine Inouye, Mary Itanaga, Sumiko Inouye, Hideko Kimura, Ruth Uyeyama, Toshiye Izuhara.

ROW 3: Roy Okimoto, Akira Matsubara, Ted Nishimura, Ichiro Oji, Raymond Ogata, Fred Aragaki, Tsutomu Morihiro, Isami Igarashi, Willie Fukano, Roy Adachi, George Ochi, Louie Kawamoto, Osami Mibu.

ROW 4: Kiyoshi Omachi, Jimmie Taniguchi, Masaki Ono, Roy Oriba, Saburo Kataoka, Jiro Okazaki, Hisashi Hitomi, Edward Yoshida, Thomas Inami, Tomio Jofuku, Howard Okada, Shozo Inouye.







ROW 1: Sachiko Matsuo, Edna Sueyasu, Eleanor Aoki, Alice Kashiwabara, Shizuko Ochiai, Chieko Suzuki, Chieno Nakanishi, Kinue Mayehara, Jean Shimazu, Haruko Hiraoka, Kimiye Kunitake.

ROW 2: Teruko Igarashi, Yoshiko Sumi, Tsukiye Kawaguchi, Michiko Oda-chi, Sumie Yonemura, Lillian Yamasaki, Yaeko Kobata, Janet Matsuda, Nora Matsumura, Haruko Kato.

ROW 3: Fredrick Yoshimura, Takumi Izuno, Akira Shiotani, Mitsugi Murakami, Kiyoshi Karukaya, Charles Ando, Yoshinobu Motokane, Edward Okumoto, Takashi Shoda, George Masagatani, Kazuyoshi Ikeda.

ROW 4: Takashi Kitajima, Isao Kirita, Jimmie Jinkawa, Teddy Osako, Bob Wada, Tomoyoshi Nakamura, Masami Yoshioka, Yoshiyuki Sanwo, Yuji Kobayashi, Jiro Kimura, Tsutomu Akiyama, Takashi Matsuo.

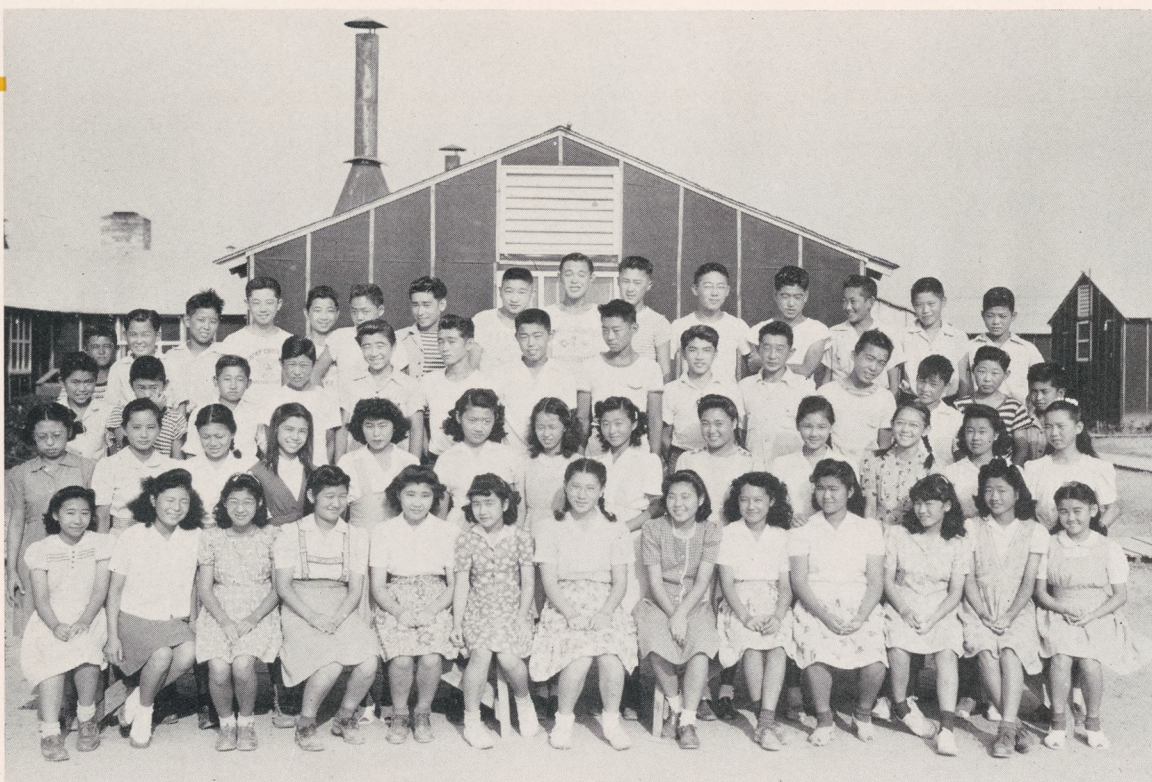
# FRESHMEN





# JUNIOR HIGH SCHOOL





ROW 1: Toshiko Matsumura, Sumiye Shikuma, Yayeko Kawamura, Hisako Sakaniwa, Helen Komori, Kigiku Izuno, Reiko Todoroki, Haruko Torigoye, Irene Aragaki, Jean Kimura, Wilma Matsubara, Lily Miyamoto, Carol Tsuda.

ROW 2: Yoneko Kobata, Ayako Takamine, Florence Nakamura, Evelyn Yama, Frances Takeda, Michiko Yoshida, May Kagawa, Emiko Nakayama, Ruby Hayashi, Wakako Odate, Martha Hirose, Yasuko Yumiba, Yuriko Katayama.

ROW 3: Yoshio Nakagawa, Albert Tsuchiya, Ken Naito, Walter Shimasaki, Michio Tanaka, George Shimosaka, Ichi Kanamoto, William Kamimoto, Ted Kamamime, George Uneda, Robert Michihara, Raymond Hasegawa, Koson Kuroda, Shogo Iwatsuru.

ROW 4: Kenichi Yamane, Kenneth Ishii, Frank Kamimura, Hitoshi Suyehiro, Shuji Kitahata, Gordon Koga, Joe Hanashiro, Richard Doi, George Matsusaki, Hideo Watanabe, Morris Hosoda, Babe Ikezaki, Tom Hiram, William Nishimura, Takuji Ageno.

## 8th Grade



## 8th Grade

ROW 1: Doris Nitta, Betty Harada, May Imahara, Iris Noma, Misao Nak-  
auchi, Hisako Fukuda, Mitzie Izumi, Alice Mizusaki, Sadako Morihiro, Mitsue  
Imai, Kiyoko Asaki.

ROW 2: Yuriko Inouye, Edith Okano, Ikuye Dobashi, Mieko Isogawa, Fu-  
miko Kira, Dorothy Nagata, Marie Ishigame, Chimiye Morita, Amy Kawan-  
ishi, Alice Fujinaga, May Aoki, Ruth Hosoda, Etsuko Hata.

ROW 3: Roy Koga, Teruo Doi, Tommy Watanabe, Shuizo Kitahata, Paul  
Endow, Akira Kawada, Yukio Masai, James Tsukamoto, Jack Yakahashi,  
Tom Nakazawa, Herbert Nishio, Sam Sakai, George Masuda.

ROW 4: George Nakayama, Abraham Yoshihara, Isao Nomura, Raymond  
Sato, George Yokoyama, Richard Kurushima, Yoshio Yokota, Yoshio Muroi,  
Herb Yomogida, Ben Mitsuyoshi, Roy Matsui, George Sahara, Ben Nagatani.







ROW 1: Shizuko Sumida, Alice Miyamoto, Ryoko Tabata, Sachiko Matsumoto, Gladys Uyemura, Kiyoko Shinke, Mitsuko Nojiri, Florence Wakita, Tamiko Nakashima, Nancy Nakashima, Rose Yoshida, Kikuyo Iwashita, Hilda Yamane.

ROW 2: Barbara Matsubara, Jessie Yokota, Betty Nojiri, Michiko Sakamoto, Fujiko Kojima, Carolyn Abe, Jane Senda, Betty Tsuruoka, Julia Sugita, Fudeko Tsuji, Grace Yamamura, Fumiko Yagi, Miyoko Yagi, Masako Sasahara.

ROW 3: Toshiaki Tagami, David Yogi, George Sakata, Teruo Inouye, Yoichi Yoshinaga, Roy Tange, Larry Iwasaka, Kenny Fukuda, George Yamane, Yoshio Yoshihata, George Miyasaki, Billy Okamoto, Roy Tanabe.

ROW 4: Osamu Mori, Fred Taniguchi, Masaru Yoshimura, Hideo Shimazu, Shuji Hori.

## 8th Grade



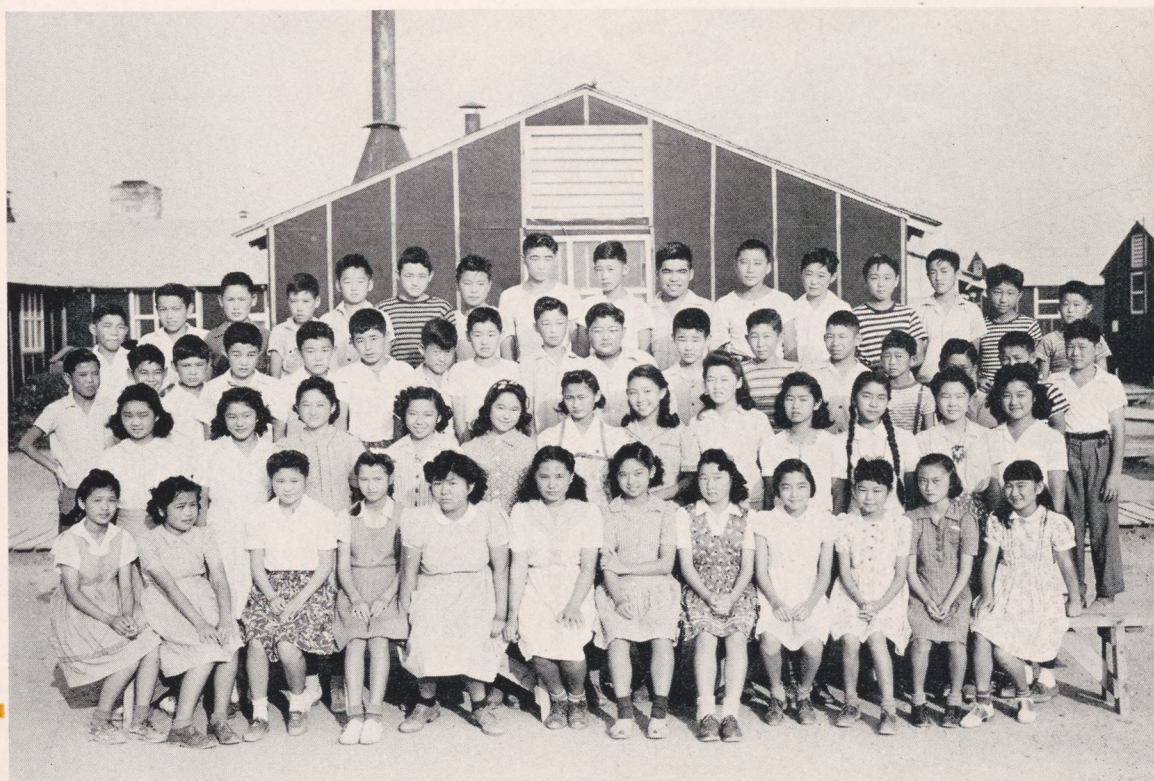
## 7th Grade

ROW 1: Helen Yoshimura, Grace Inori, Midori Arimura, Kikuye Matsufuji, Midori Nishimura, Sumiye Hayashi, Yasuko Arakawa, Lorraine Kataoka, Michiyo Ishii, Janet Harada, Setsuko Kawamoto, Miwako Nishimura.

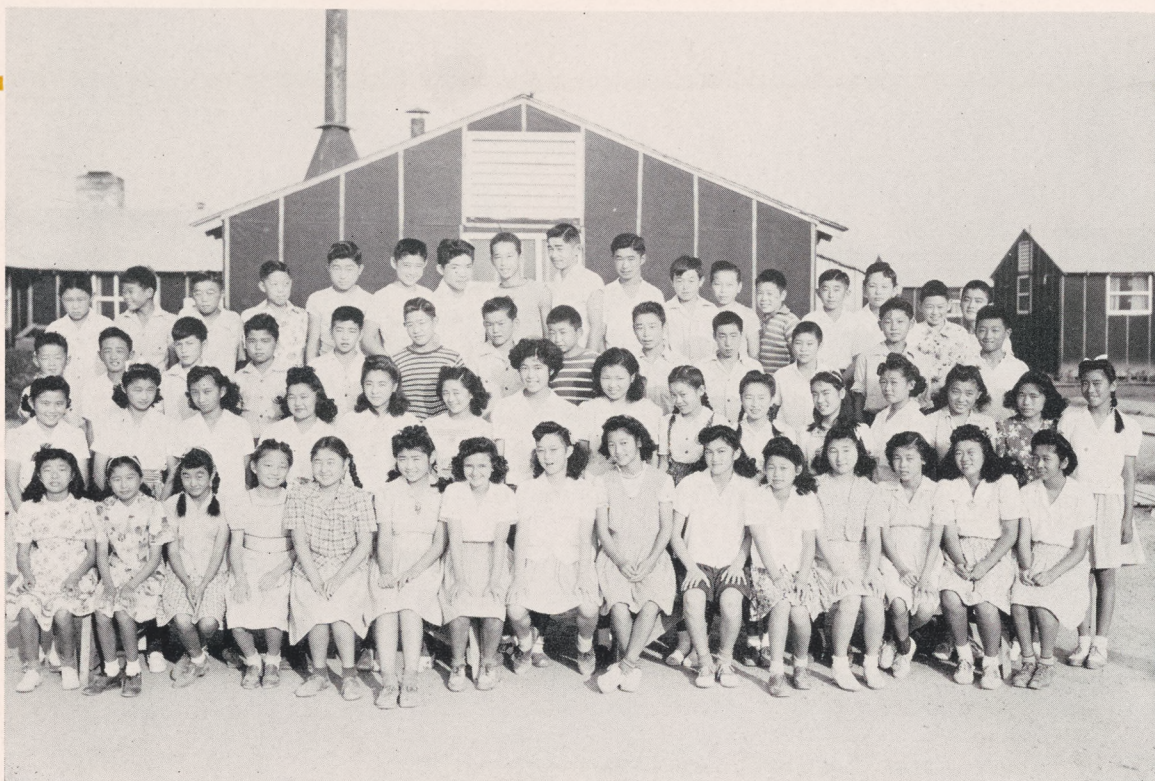
ROW 2: Martha Fujikawa, Alice Kamimoto, Ruby Kakuta, Marian Henmi, May Inami, Ayako Kawamoto, Yoshiye Nagahama, Kiyoko Masuda, Miyuki Hiwano, Suzuko Kawano, Miyoko Kawamoto, Toyoko Hamade.

ROW 3: Tooru Iwashita, Jimmie Ichinaga, Ted Hisamoto, Sammy Akioka, Jimmy Akioka, Hiroshi Inouye, Shiro Odaka, Yoshio Ishida, Thomas Imahara, Mitsuo Watanabe, Junzo Fujita, Arthur Yamaguchi, Hiroshi Imai, Shiro Okimoto, Ichiro Kiyotsuka, Henry Oba, Teruo Ego.

ROW 4: Mino Asato, Calvin Inori, Yukiwo Tanouye, Rio Takahata, Tom Fukano, Lefty Yamagata, Roy Nakagawa, Bob Shimosoka, Tsuneo Yamamoto, Henry Toyama, George Tanaka, Kenneth Ouchida, Alvin Ogata, Raymond Uruhima, Sam Okimura, Richard Okada.







ROW 1: Lily Misono, Kazuko Matsumoto, Dorothy Yokoyama, Jane Suo, Grace Omatsu, Midori Sasaki, Ruth Monji, Tomiko Yoshinobu, Mariko Mitsuyoshi, Mary Nakazawa, Tsuneko Taniguchi, Yoko Todoroki, Elizabeth Sugita, Chidori Yamakido, Amy Uyemura.

ROW 2: Mariko Tanaka, Mitsuye Tahara, Lily Uyeda, Betty Tanigawa, Teruko Oji, Norma Urabe, Rosaline Yoshida, Mary Tagashira, Mamie Matsunaga, Emiko Murata, Tokiko Nakagawa, Eleanor Sekikawa, Mildred Nishimura, Mary Mori.

ROW 3: Roy Tagami, Shigeru Motokane, Ted Kodama, Lawrence Matsumiya, Paul Takeda, Akira Tashima, Yukio Takemoto, Henry Tonooka, Seiji Sawada, George Saki, Ben Yoshinaga, Shigeo Tahara, Joh Sekiguchi.

ROW 4: Johnnie Maeda, Roy Murakami, George Matsubara, Harold Kodama, Minori Kozawa, Shigeru Kono, Takeshi Matsui, Toshiki Matsunaga, Hideo Mori, Shogo Magota, George Nojiri, Shin Masai, Shozo Tomita, Saburo Masada, Eddie Kanenaga, Roy Mayeda, Kaori Komoto.

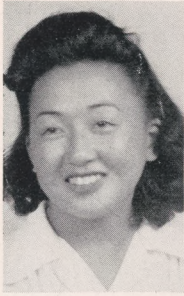
## 7th Grade



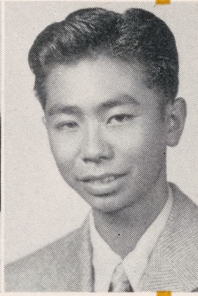
# ACTIVITIES







Akiko Yamanaka  
Editor



Jim Arakaki  
Business Mgr.



Elizabeth A. McCuiston  
Editorial Sponsor



Howard K. Renge  
Business Sponsor

It was decided by the senior class on June 21, to have a school annual. Under the leadership of Miss Elizabeth Ann McCuiston, editorial sponsor, and Mr. Howard K. Renge, business sponsor, the Victoria Staff began a race against time to complete the annual before the end of the term. It was necessary to accomplish a year's work in six weeks' time.

With \$2500 as their goal, the business staff put over a Co-ed contest, raffle drawing, carnival, advertising campaign, and sold complimentary space in the annual.

Both staffs hope they have justified their selection by the senior class.

Left to right: Chizuko Kodama, Kazumi Yamashita, Yoshiaki Motokane, Mr. Renge, Jimmy Arakaki, Miss McCuiston, Akiko Yamanaka, Hiroshi Mayeda, Anna Sakai-zawa, Doris Soraacka and Toshio Uyeda.

## Victoria Staff





## Condensor Staff



Left to right: Hiroshi Mayeda, Sakae Komatsu, Kazumi Yamashita, Akiko Yamanaka, Toshio Uyeda, Grace Ari-mura, Jeanette Toyama, George Hamada, Anna Sakai-zawa, Nancy Utsunomiya, Violet Noma, and in the dark room, Doris Soraoka.

Making its debut on April 6, 1943, THE CONDENSOR, Denson High School's bi-monthly newspaper, has been met by the students with open hands at each publication.

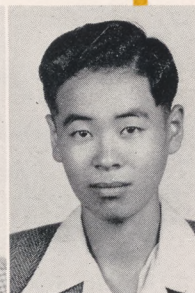
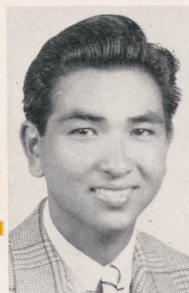
Under the leadership of initial Editor, Toshio Uyeda; Advisor, Miss Elizabeth Ann McCuistion; and the above staff, enthusiastic fourth estaters; a 20-page senior edition and a special extra besides regular issues have been published.

The six-page mimeographed paper has also qualified for Quill and Scroll, the National Honorary Journalism Society. A charter has been granted and a local chapter organized.

Each Condensor has been published by and for the students of the entire high school, and has also been financed by the students. It is the only Center paper to handle its own business and carry advertisement.

Toshio Uyeda  
*Editor*

Kiyoshi Tsuji  
*Business Mgr.*







## QUILL AND SCROLL

Receiving their charter on June 9, 1943, Quill and Scroll, National Honorary Society for Journalists, was organized, and an initiation ceremony in August inducted the above charter members into the new chapter.

Row 1: Akiko Yamanaka, Doris Soraoka, Anna Sakaizawa, Grace Arimura, Kazumi Yamashita.

Row 2: George Hamada, Toshio Uyeda, Hiroshi Mayeda. Miss Elizabeth Ann McCuiston, sponsor. Kiyoshi Tsuji is also a member.

## PRO AND CON

If you want an argument settled or unsettled just ask one of the above members of the Pro and Con Club sponsored by Mr. Howard Renge and Mr. Eldon Okada.

Row 1: Kiyoshi Tsuji, George Sawai, Mr. Okada, Mr. Renge, Yoshiaki Motokane, George Hamada, Hiroshi Mayeda.

Row 2: Chuji Maruko, Toshio Uyeda, George Nakashima, Yoshitami Sakaguchi, Nobuo Watanabe, Joe Inami, George Toyama.





Composed of approximately 100 girls, the Junior Glee Club has performed at many functions in and out of camp.

Part of them have performed at Lake Village and Dermott. They have also performed for school commencement exercises and assemblies.

Miss Pauline Austin, head of the music department of this Center, has been a scholarship student of Rudolph Ganze at the Chicago Musical College, where she received her Master of Music degree.

Prior to her position here, she had taught in many schools and colleges throughout the South.

JUNIOR  
HIGH

GLEE  
CLUB



# BAND



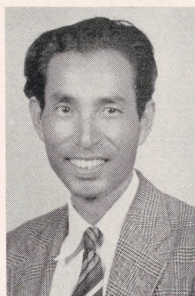
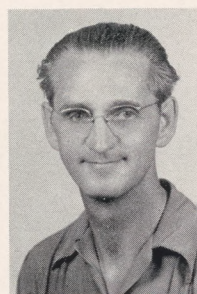


Organized by Mr. Robert Head, early in the year, the Denson High Band has progressed rapidly. Although handicapped by lack of instruments, the small brass ensemble has already made public appearances.

Because many students are showing interest in developing a band, it is hoped by the department that they will have a band of which everyone of Denson can be proud. Even grade school students are taking lessons in preparation for joining the band upon promotion from Grammar School.

Besides his ability to play various instruments and to direct, Mr. Head is especially noted as a pianist.

Members of the Band in the picture opposite are, from left to right: Eizo Arakawa, Edward Nimi, Akira Tanouye, Mackay Yoshimura, Ted Nishimura, James Ando, Stanley Okamoto, Toshio Kume, Mr. Robert Head, Osami Mibu, Kazuto Okamoto, Merrit Kodama, Tom Naito, Kaz Jofuku, Roy Yamagiwa, Mits Fukuda, Teruo Doi, Katsumi Masada, Kiyoto Imai, Roy Nishimura.



Under the direction of Mr. Sam Matsumoto and Mr. Robert Head, music instructors of this school, the Orchestra was organized early in the year.

This Orchestra is constituted of experienced players from the west coast schools and they play very excellently as an ensemble.

Being a fine group of musicians, they have appeared before a number of audiences throughout the center, a few of them being: Commencement exercises at the High School, Baccalaureate Services, for distinguished visitors and faculty, style show, Mother's Day program, and others.

A few of the more talented members have rendered numbers at the Center talent shows.

From left to right in the opposite picture: Katsumi Masada, Stanley Okamoto, Mitsugi Fukuda, Roy Nishimura, Mackay Yoshimura, Ona Mae Koda, Toshio Kume, Mr. Sam Matsumoto, Jessie Yokota, Grace Yamamura, Akiko Muroi, Kazuko Tsubochi, Bernice Kanenaga, Fumi Asakawa, Teruko Arakawa.

# ORCHESTRA



## SENIOR GLEE CLUB



Miss Mary Kasai, music and piano instructor, has helped both senior and junior students but most of her work has been with the junior high.

She attended Fresno State College in California where she received her A. B. Degree in Music, also she has a certificate to teach Special Secondary and Public School Music.

ROW 1: Shizuko Sasahara, Betty Nobayashi, Amy Sasaki, Dolly Hirohata, Kiyoko Shike, Frances Urabe.

ROW 2: Riyoko Kobayashi, Sadako Sumida, Amy Kobashi, Nobu Yamagata, Marge Nakamura, Fusaye Yoshida, Michiko Tempo, Irene Takeshita, Sadaca Kuratomi, Yaeko Chakuno.

ROW 3: Katherine Kuwada, Edith Fujikawa, Frances Hirata, Rubie Kawanishi, Mae Takeuchi, Katherine Takemoto, Margaret Adachi, Misa Asakawa, Sumiko Iwatsuru.

ROW 4: Rosie Kimura, Alice Okimura, Fumi Asakawa, Sal Aoki, Chizuko Yakamine, Sumiye Unno, Sarah Kimura, Rosie Tsukamoto, Mary Honaga.

ROW 5: Yoshio Yoshihata, George Yonemura, Don Takahama, Kouji Arihara, Johnnie Adachi, Katsumi Yoshioka, Moriyasu Yamagata.



# BOYS' SPORTS





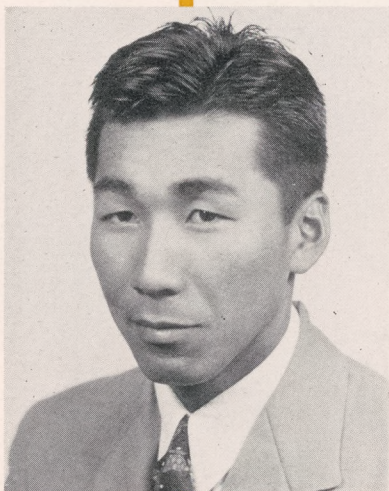


#### COACH DICK KUNISHIMA

Dick Kunishima, coach of Denson High, has done much to develop the boys' physical education department.

He originally hails from Whittier College in California, where he was an outstanding athlete. Mr. Kunishima starred in baseball and football there.

## COACHES



#### COACH GEORGE NORIKANE

Another man with envious background is our coach, George Norikane. He comes from Northern California where he attended Bakersfield Junior College. Being the outstanding athlete there, he was awarded the Lynn Trophy.

Note: After the annual pictures had gone to press, coach Hiroshi Kusakai took over the work of George Norikane who relocated. Coach Kusakai is ably filling the vacated position, having already had wide experience in sports.



Denson High Basketball Team. Three wins in three encounters.



Tiger baseball team. Three defeats in a row but victory in spirit and sportsmanship.



Fighting valiantly for the Black and Gold, the Denson High's varsity teams came through the year with flying colors.

Beginning the season with basketball, coaches Norikane and Kunishima built a deadly potent casaba team. Twice, Rohwer High invaded Denson but met disastrous defeat each time. And again they met defeat when Denson chalked up another win at Rohwer High School.

Coming of cowhide season saw coaches Kunishima, Norikane and Kusakai rounding out a star-studded baseball nine. But Rohwer presented a superior team and consequently Denson met three defeats in three encounters.

So the season closed, leaving on the records a dead-lock of three wins each for Denson High and Rohwer High School.

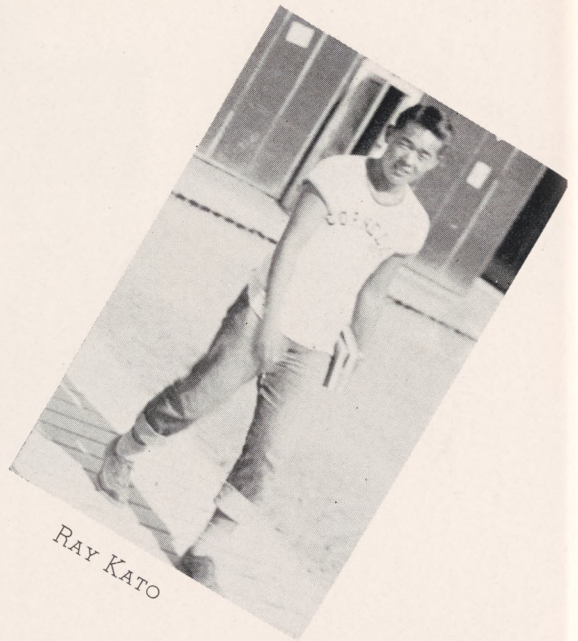
## VARSITY TEAMS



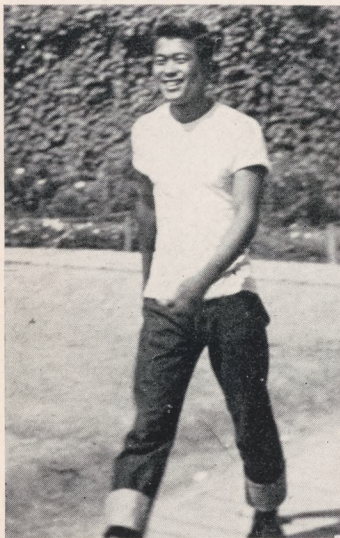
# OUTSTANDING



GEORGE ICHIBA



RAY KATO



HENRY TSURUOKA

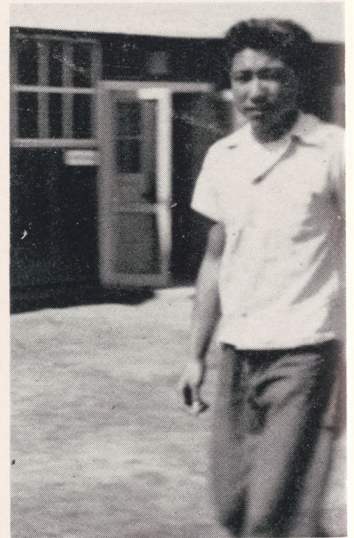
Looking through the list of Denson High School's many athletes, twelve of them were picked by the athletic department staff as outstanding sportsmen.

All these students either participated in basketball, baseball or both.

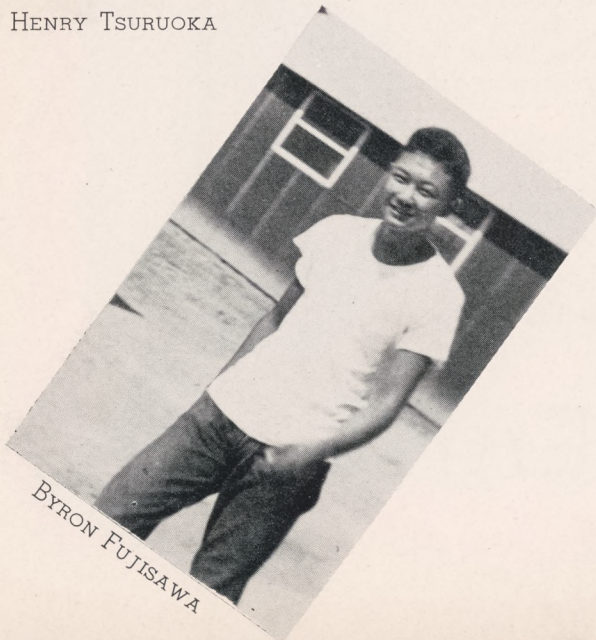
Since track and football were left out of the athletic calendar those outstanding in those sports were not included.

Throughout the school year these Denson Tigers could be seen actively training for their respective sports.

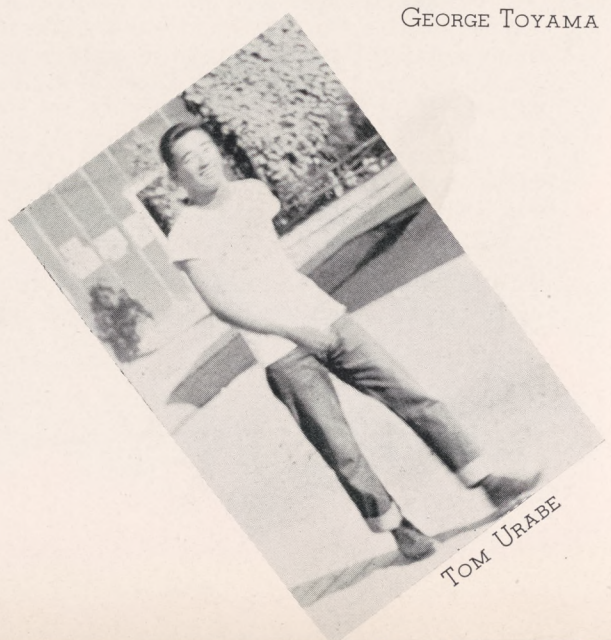
Many of them listed here were also important cogs on many of the center athletic clubs. These boys have won and lost numerous times but whether in defeat or victory they showed undoubted sportsmanship.



GEORGE TOYAMA



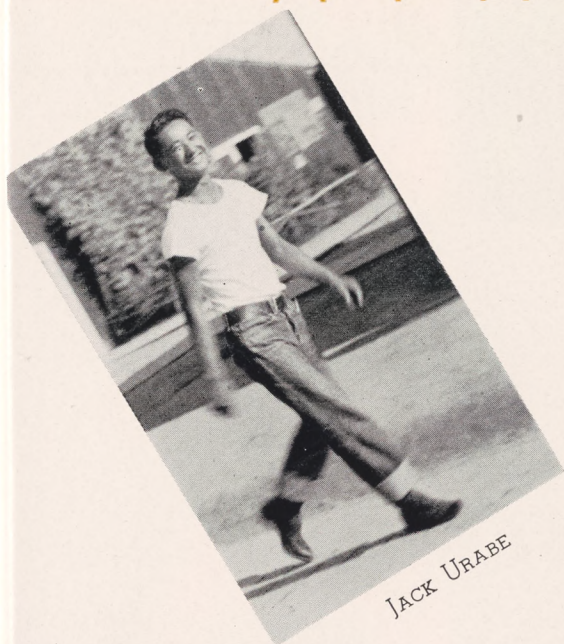
BYRON FUJISAWA



TOM URABE



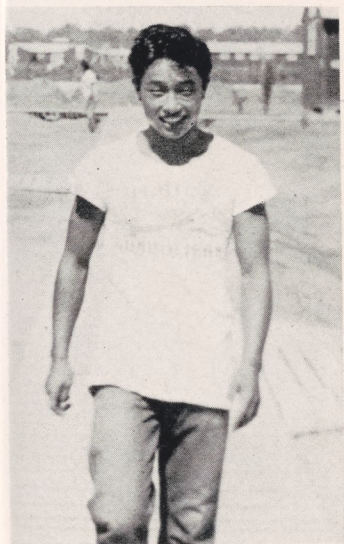
# ATHLETES



JACK URABE

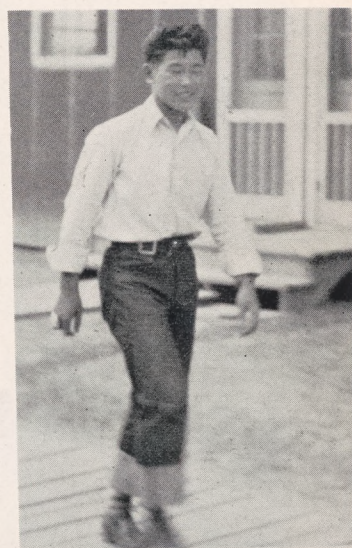


KENJI NORIKANE

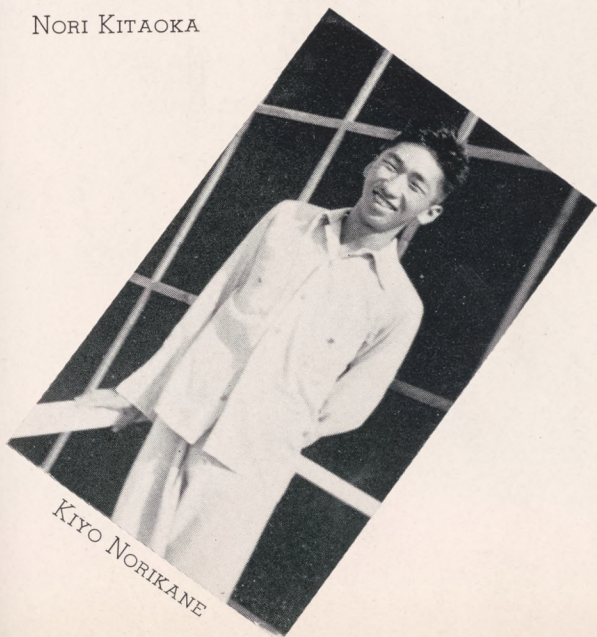


NORI KITAOKA

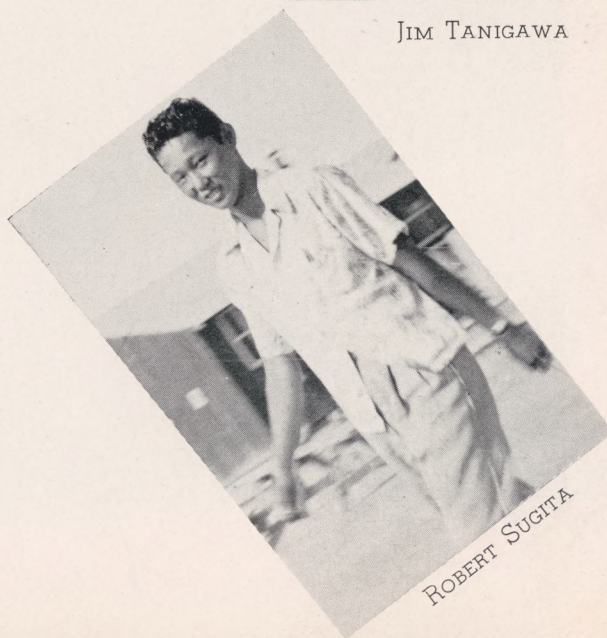
George Ichiba, basketball, played outstanding at center. Ray Kato, basketball, sharpshooting guard. Henry Tsuruoka, basketball, one hand shot expert at guard. George Toyama, basketball, elusive, fast forward; in baseball, shotstop. Byron Fujisawa, basketball, guard. Tom Urabe, basketball, baseball pitcher. Jack Urabe, baseball, pitcher. Kenji Norikane, basketball, baseball, catcher. Nori Kitaoka, baseball. Jim Tanigawa, baseball, pitcher. Kiyo Norikane, basketball, baseball, second base. Robert Sugita, baseball, sticky handed first baseman.



JIM TANIGAWA



KIYO NORIKANE



ROBERT SUGITA

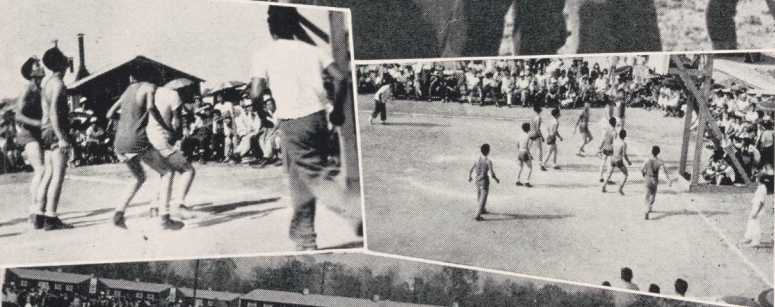




'Atta way, fellas!



Gosh! Just about made it.



Sink it!

Did he make it?



Hey! Don't let him do that!

Note mattress covering stumps on the field.

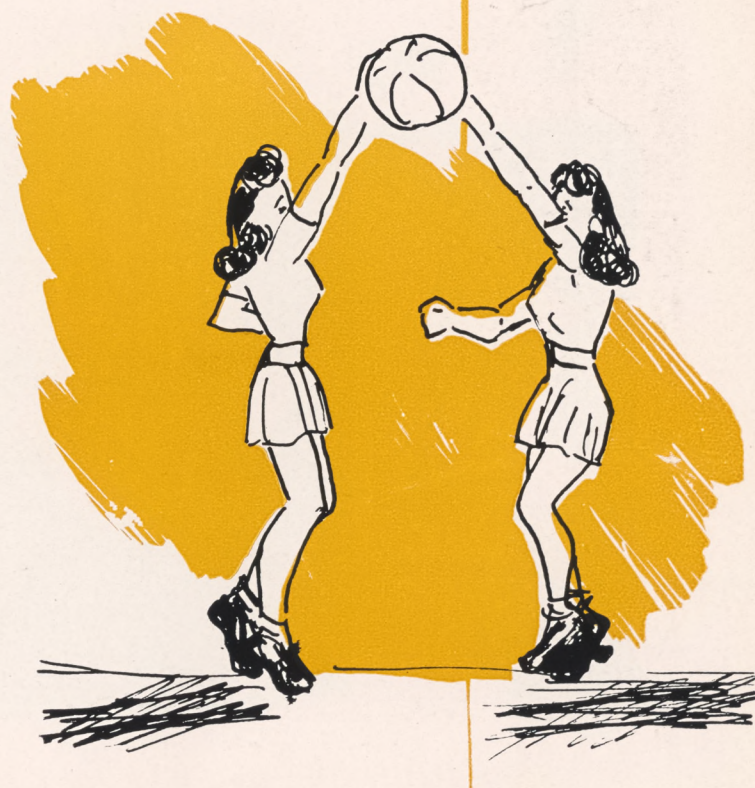


Beat Rohwer! That's the school yell.

One, two! Swell way to keep a trim figure.



# GIRLS' SPORTS







#### DIRECTOR MARY WHITE

Mrs. Mary White, a graduate of the University of Colorado, taught at Fort Smith High School before becoming the girls' physical education instructor of Denson High School. Sports being her hobby, Mrs. White is an active sponsor of the GAA, in addition to her physical education classes.

Beginning early in April with Mrs. Mary White, physical education instructor, as sponsor, the Girls' Athletic Association was one of the most active clubs in school.

Their calendar for the last term was full of dates for scavenger hunts, parties, and the numerous games with their opponents, the Rohwer girls. In every game the GAA girls showed unexcelled sportsmanship regardless of victory or defeat.

G.  
A.  
A.





# ALL-STAR TEAMS

Doris Soraoka  
Bernice Kanenaga  
Rosie Tsukamoto  
Mary Yoshida  
Yoshiko Nii



Denson girls' all-stars basketball team is composed of the top athletes picked from all of the physical education classes. In the one game played with their rival, Rohwer girls' team, the Denson all-stars won by an overwhelming score.

Below is pictured the G. A. A. baseball team. Although they emerged victoriously from the Denson-Rohwer tussle held in Denson, the Denson Amazons lost to the same opponents in the game played on enemy territory.

Sally Aoki, Kazuko Nomura, Marge Nakamura, Ruth Hirose, Jean Mori, Amy Sasaki.

Ida Arimura, Shigeko Masuda, Kazumi Yamashita, Kazuko Tsubouchi, Akiko Fujita, Miwako Hatashita, Mary Aoto, Amy Yoshinaga, Katie Kuwada.







Watch the  
birdies fly.

Will she  
make it?

That's reach-  
ing for them.

It's over and  
under and  
around they  
go.



# THE CLASS OF '43





# OUTSTANDI

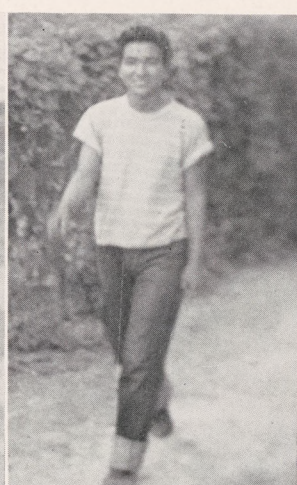
AS CHOSEN BY



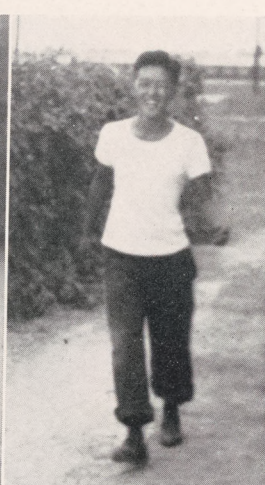
JIMMY ARAKAKI



GEORGE NAKASHIMA



TOSHIO UYEDA



YOSHIAKI MOTOKANE

"Brains", Very active student body president, efficient business manager of Victoria . . . sparkling personality.

Just plain "George". President of Senior A class, lady killer and liked by every one.

Known as "Tosh". Editor of school paper, student council, women hater, (he pretends, but we know better.)

"Yosh" for short. Class Commissioner of Finance, assistant business manager of Victoria, hard worker.



# NG SENIORS

## THE FACULTY



AKIKO YAMANAKA



MASAKO NOBUTO



FUKUKO SATO



ALICE IMAMOTO

"Akiko". Editor of Victoria, assistant editor of Condensor, clever writer, likes to argue, hard to convince, can hold her own.

Nickname "Mas". Secretary of Senior class, queen's attendant, wolves always hounding her, liked by every one, especially wolves.

Called "Fuku" by friends. Vice President of Senior A class, she can always be seen actively hustling around school.

No nickname, just "Alice". Very active and talented in music, also active in community affairs, friend to all.



# Denson High Beauties

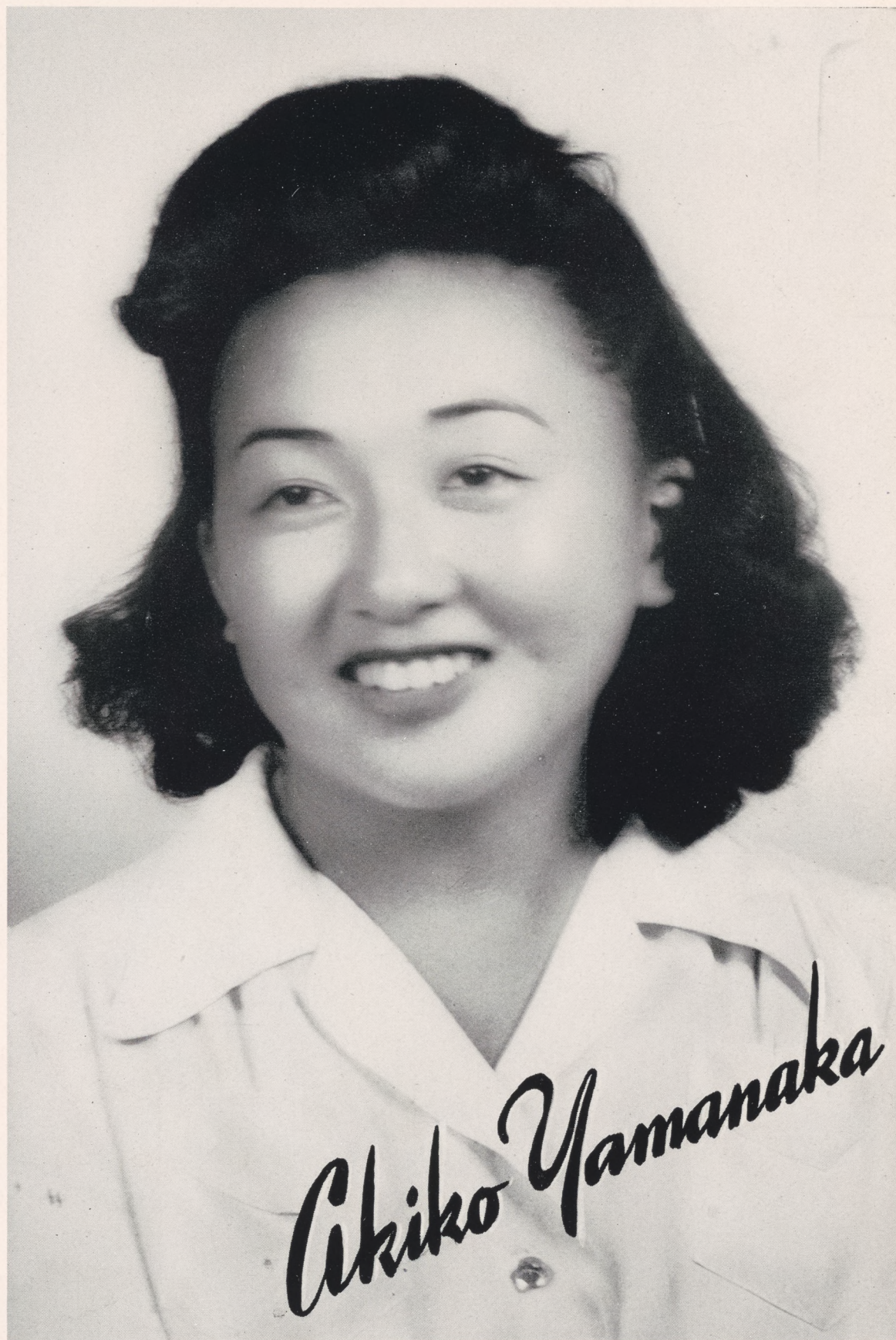


Acting as beauty contest judges, Mr. Paul A. Taylor, center director, and Assistant director, Mr. William O. Melton, after a hard-to-decide deliberation concurred on three most beautiful girls from the many photos presented.

These pretty lasses were chosen from the Senior classes and are Akiko Yamanaka, senior A; Masako Nobuto, senior A, and Akiko Shiotani, senior B.

Of these three beautiful Densonites, Akiko Shiotani and Masako Nobuto were chosen to reign as queen's attendant at the school sponsored "Nightmare" Frolic Carnival.









*Masako Nobuto*







# Class Will

Taking a last snoop in the CONDENSOR mail box before closing business for the vacation, an underclassman reporter found by accident a small metal box. The box contained a single sheet of paper on which the '43 class will was written. It read as follows:

We, the class of '43 do hereby publish our Will. May our various talents, oddities, and possessions, which we bequeath most generously, be useful to our dear benefactors and benefactresses.

I, James Arakaki, will my golden sales-talk voice to the next Victoria business manager.

I, Grace Arimura, leave my position as girls' sports editor to the envious boys. Now they have an excuse to look at girls in gym shorts.

I, Fumi Asakawa, take everything with me. Might need them.

I, Chizu Dobashi, bequeath my cute smile to Harvey Kitaoka. He has a million dollar smile, but what's a million?

I, Byron Fujisawa, leave my intense love for English literature to Miss Dilday.

We, Emiko Fukano and Utako Fukuda, will our bold ways to our bashful brothers, Tosh and Kenji, respectively.

I, Shizuko Furukawa, bequeath my ability to keep clear of arguments to the Pro and Con members.

I, George Hamada, alias Birdlegs, leave my title of "the most serious boy" to Joe Hamadc.

I, Yoshiko Hirahara, will my booming voice to Mr. A. L. Reed. Sometimes it's difficult to hear him two blocks away.

I, Tsuruko Hiram, will my operatic voice to Rochester in care of Jack Benny.

I, Mae Horie, bequeath a bit of my height to my sister Nancy.

I, Toshi Hoshiko, leave a bit of advice to the admiring girls. To be social successes,

don't comb your hair. Just let it have the cavewoman appearance.

I, Alice Imamoto, bequeath my chigger bites to the biology class.

I, Jane Matsubara, leave some of my technique to the boys baseball team, so the headlines in the paper will not always read, "Denson suffers defeat."

We, Lily Inada, Ray Kato, and Katsumi Masada will our mug-shots to the rogues' gallery section of the annual.

I, Lily Nagatani, bequeath to all the gals who durst take physics my physics notes.

I, Kiyomi Ogawa, bequeath to all the brainstorms my muscle which I developed by carrying seven or eight books at a time.

I, George Nakashima, leave my curly hair to some pachooks, in hope that they will use less axle grease to keep their hair looking neat.

I, Masako Nobuto, will to the next secretary my writer's cramp, which I received while serving my sentence as secretary of the Senior A's.

I, Yoshiaki Motokane, bequeath my unique nickname, Frenchy, to my brother, Nobie Casanova.

We, Kikuko Hiwano and Heddy Nomura, leave to the giddy sophomores our ability to keep our names off the scandal column in the paper.

We, Michiko Kimura and Mabel Ikeda, leave a bit of our Hula dance art to Mr. Okada. He has such lovely legs, he must be given an opportunity to show them.

I, Akiko Higake, will my decidedly California accent to Miss Tucker.

I, Nori Kitaoka, leave my charming brother, Caveman, to the femmes, but sorry fellas, not my gal.

I, Teruko Matsufuji, bequeath a good old rule to the Denson girls baseball team. Just tap the ball with the bat for homers.



# YOGI BEN MOTO, JEROME PROPHET' PREDICTS FUTURE OF CLASS

An interview by your "Victoria" reporter of Yogi Ben Moto, renowned Crystal Gazer of Jerome Relocation Center, revealed the following amazing, never-fore-told facts of the graduating class of 1943, 15 years from now.

Yogi Ben Moto's predictions are asserted to be correct 95 per cent of the time.

As your reporter stood there fascinated, Yogi Ben Moto began weird motions of the hand over the dark crystal ball.

"Ah," he murmured as the ball began to emit light. "I see . . . a rosy future for Jiro Oyama, Kiyoshi Tsuji, and George Toyama; they're the greatest engineers of the day, and their greatest feat is the building of a dam across the Strait of Gibraltar to stop the flow of water from the Mediterranean into the ocean."

"What's this? Amazing! It's Noritsugu Uyeno, a successful lawyer who's never lost a case".

Yogi Ben Moto gazed unceasingly into the crystal and came out with this, "I see printing presses, linotypes, people, desks and sitting at the Editor's desk is Toshio Uyeda, a great journalist. And I see Jeanette Toyama, Akiko Yamanaka, too, Social Editor and Business Manager, respectively. This newspaper has practically run the New York Times out of business.

"Whew!" sighed our oracle as he wiped perspiration off his brow.

Again he gazed into the ball. "I see colored lights, cameras; it's Hollywood, and for the new picture, "Dreams of Arkansas", are featured the famous Sato twins, Fukuko and Yukiko."

He continued, "I can see double tongued Nobuo Watanabe, and who's this on his lap? The mist is clearing and now I see it's George Yamana. They're ventriloquist Watanabe and his dummy Yamana."

"Now I see an army, yes, an army of hoboes and among them are: Kenneth Sakata, Frank Tokumoto, Shozo Urushima and John Yogi. They're really millionaires disguising themselves and out for fun, but what fun!"

Suddenly a burst of light from the crystal and behold, "There is a row of cute cottages and occupying them are Sarah Okada, Kazumi Okimoto, Tokiye Sokomoto, and Aiko Tagami", stated Yogi Ben Moto. Of course, they're all Mrs. now. Well! Lots of happiness to you girls."

"Now I behold quivering strings and a bow, what beautiful music, it's Helen Yamamoto, the famous violinist!"

"Mariko Sahara is a Public Accountant. Now the scene has changed to a busy city and I see a beauty shop, the proprietors are Carole Yoshioka and Katsuko Yamamoto."

"The crystal shows that Royal Sakaniwa is a great professor and a world traveler. It also predicts that Masako Nobuto and her rich husband are traveling around the globe."

"Wow! I see beans, beans, fish, fish and Hiroshi Shibuyama, Kazuo Shimazu, and Henry Tsuruoka. They're still in Jerome Relocation Camp and love it so much they can't part with the place."

"Last, I see a museum and an art gallery filled with the paintings of that superb artist, Chiyeko Kimura."

Having prophesied the future of the students, Yogi Ben Moto made this statement: "Most that I have predicted will come true, some are rosy and a few seem impossible, but I never make mistakes." So folks, here we have it, the predictions of the future for some members of the graduating class 15 years from now, in Yogi Ben Moto's own words.



# Who's Who

During a class meeting held by the Senior A class 19 students were selected because of their outstanding characteristics. In our opinion even Hollywood's movie actors and actresses cannot vie with the chosen students for profile, personality, attractiveness, figure, physique, etc.

Grecian mythology's Amazons seem insipid against our best girl athlete. The intelligence of the boy and girl selected by the class surpasses that of any professor.

We present to you these boys and girls:

Most popular boy	George Nakashima
Most popular girl	Akiko Yamanaka
Boy with the best personality	James Arakaki
Girl with the best personality	Yukiko Sato
Most bashful boy	George Toyama
Most bashful girl	Mariko Sahara
Best athlete (boy)	Ray Kato
Best athlete (girl)	Jane Matsubara
Handsome	Hiroshi Shibuyama
Most attractive	Fumi Asakawa
Most ambitious boy	Yoshiaki Motokane
Most ambitious girl	Lily Nagatani
Intelligent boy	Kiyoshi Tsuji
Intelligent girl	Alice Imamoto
Serious boy	George Hamada
Most feminine	Yoshiko Tsutsui
Profile	Henry Tsuruoka
Figure	Masako Nobuto
Physique	Nori Kitaoka



# Senior Calendar

July 9, 1943

The senior class installed our George

And his old faithful crew

As leaders of the final term.

Hard workers they are, too.

August 5, 1943

With Motokane as M. C.

Miss Koda reigned as queen

Over the gala Co-ed ball.

A night of music, fun, suspense

Was laughed and loved by all.

August 6 and 7, 1943

Raising funds for our year-book

Was lots and lots of fun.

The Carnival went over with

A bang for old and young.

With boots galore and dances, too,

And fun in ev'ry nook,

The people mobbed the Carnival

Until the school grounds shook.

The torrid weather we ignored

For that grand senior prom.

Not one looked withered, tired, or bored.

A big event, our prom!

September 4, 1943

Our diplomas to get, we marched

'Neath stars and open sky.

Gosh, what a relief to think

We've graduated! (sigh)!









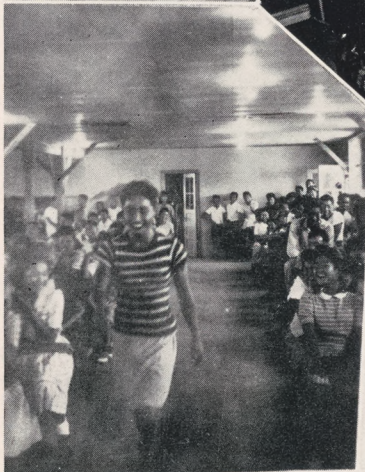




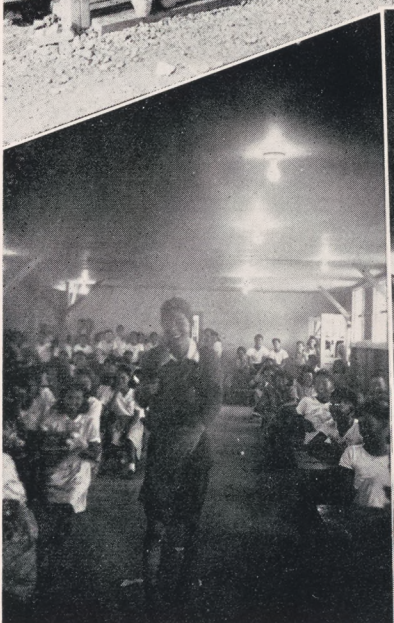
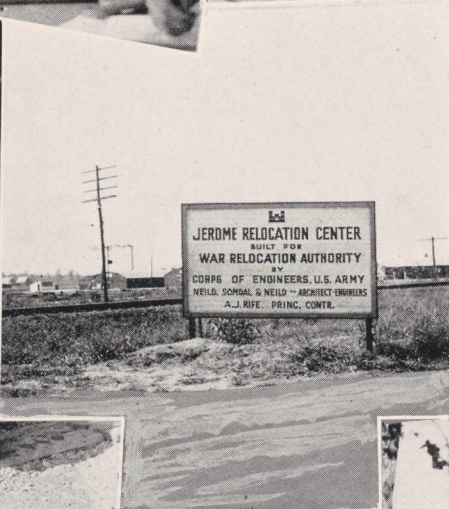
















## IN APPRECIATION

To the following people we express our deepest gratitude and appreciation for making the printing of our Victoria possible.

Miss Elizabeth Ann McCuistion for her long hours of work in preparation of the annual as editorial sponsor; Mr. Howard Renge for his success as business sponsor and for making the budget balance.

Mr. Vance Martin for his kind assistance in securing ads, spending time, money, and energy whenever needed; Mr. William Hays, Assistant Principal, for his constant aid, willing advice, and use of his office for carnival headquarters; Mr. Charles Lynn for the use of WRA photos and helpful suggestions; Mr. Tom Okano for his photographic work without which the annual would not have been possible.

Messrs. W. Leonard Mizell, engraver, and Earl Wiegen, artist, for their kind and expert help. We extend our thanks to the Peerless Engraving Company, Hurley Printing Company and Fausett's Studio for giving us excellent service in spite of wartime difficulties. And to the entire Student Body and Faculty, we are grateful for your support editorially and financially.

Sincerely,

VICTORIA STAFF.



# ADVERTISING







“Knowledge is proud that  
he has learned so much;  
Wisdom is humble that he  
knows no more.”

—Cowper.

**JEROME**

**Co-operative**



TO THE 1943

*Graduating Class*

The Jerome Co-Operative  
Enterprises congratulate the  
Graduating Class of 1943.

We wish you success and  
we hope that the education  
you learned in High School  
can be put into action, help-  
ing you greater height.

**Enterprises, Inc.**



Compliments of

FELIX PUGH

JOE PUGH

GUS PUGH

**T. R. PUGH SONS' COMPANY**

**General Merchandise**

AND

**CITY DRUG COMPANY**

PORTLAND, ARK.

**Engraved By**

**PEERLESS ENGRAVING  
COMPANY**

LITTLE ROCK, ARK.

**Congratulations, Seniors**

WE ARE HAPPY TO SERVE YOU IN  
OUR STORE OR BY MAIL.

Write Jane Adams

**PFEIFERS**

The Shopping Center of Little Rock  
and Arkansas



# *Congratulations*

IT HAS BEEN A PLEASURE TO SERVE YOU WITH  
YOUR PHOTOGRAPHIC WORK

## *Fausett's Studio*

108 MAIN

LITTLE ROCK

**S**AFETY  
ATISFACTION  
ERVICE

## **DERMOTT STATE BANK**

DERMOTT, ARK.

John Baxter . . . President

G. C. Johnson . . . Vice President  
and Cashier

W. E. Lephiew . . . Director

DEPOSITS GUARANTEED BY  
F. D. I. C.



...congratulations

**WEISMAN'S**

Dermott's Exclusive  
Ready-to-Wear Shop

GENERAL MERCHANDISE

**SPAULDING  
ATHLETIC GOODS CO.**

Wholesale

Retail

206 Louisiana Street

LITTLE ROCK, ARK.

PHONE 2-2218

**ARCHER DRUG COMPANY**

SERVICE WHOLESALE DRUGGISTS

113-115 East Markham Street

LITTLE ROCK, ARKANSAS



**ALLSOPP and CHAPPLE**

307 Main Street  
LITTLE ROCK, ARK.

BOOKS, OFFICE SUPPLIES  
SCHOOL SUPPLIES  
' ALL KINDS '

**JUNGKIND PHOTO SUPPLY COMPANY**

DEALERS IN PHOTOGRAPHIC, ARCHITECT,  
ENGINEERS & ART SUPPLIES

114 West Fourth St.      LITTLE ROCK, ARK.

COMPLIMENTS OF

**BERRY DRYGOOD  
COMPANY**

LITTLE ROCK, ARKANSAS

WE DO BUSINESS —

— 4 DAY SERVICE

**PORTLAND CLEANERS  
HATTERS**

C. D. HARRIS, Owner & Prop.

Bus. Ph. 54      PORTLAND, ARK.      Res. Ph. 6



*Compliments of*

PAUL TAYLOR

AMON G. THOMPSON

WILLIAM O. MELTON

DR. R. E. ARNE

JAMES H. WELLS

VIRGINIA TIDBALL

MARIE CASH

WILLIAM F. HAYS

JOHN R. ANDERS

ELLEN HENDENSEN

JEWEL PALMER

ALMA L. REED

CORINNE KEY

PAULINE AUSTIN

HIROSHI ODAKA



## *Compliments of*

ESTHER TUCKER

BERYLE HENRY

CARL F. HANKINS

GRACE DILDAY

ELLEN MORROW

ETTA NEAL MAYHAN

WILLIAM C. LOVE

JOHN L. MCCORMICK

ULYS A. LOVELL

ELIZABETH ANN MCCUISTION

MR. AND MRS. VANCE MARTIN

G. F. CASTLEBERRY

J. B. COOK

W. G. MAYFIELD

To those people listed on these two pages we wish to express our sincere appreciation for their cooperation in financing the annual. Though we were happy to be able to return their contributions we shall always be grateful for their intended help.



FROM THE PRESS OF  
HURLEY PRINTING COMPANY  
CAMDEN, ARKANSAS



WAR RELOCATION AUTHORITY



