

Q 2.40:1

1 of 2

67/14

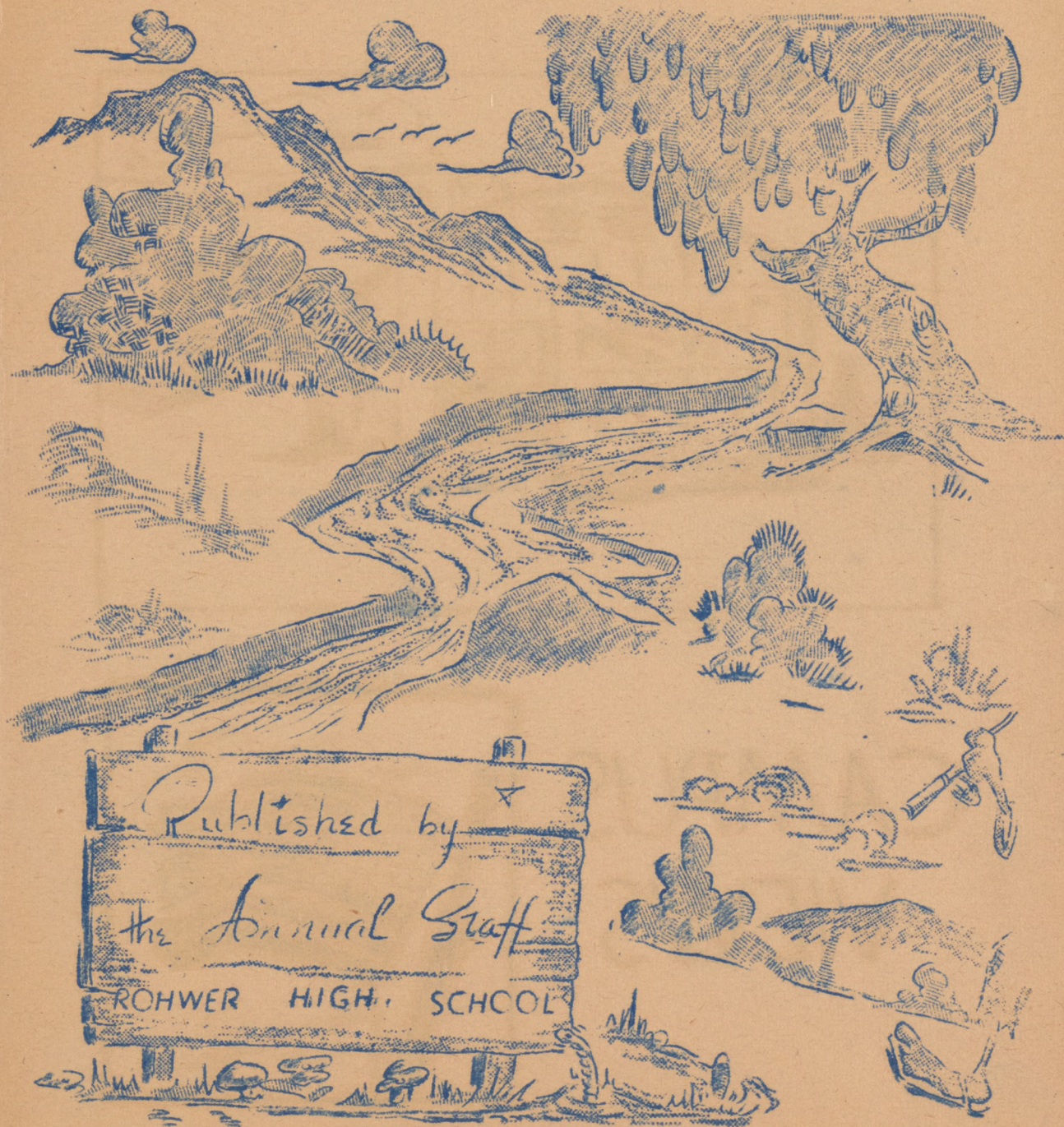
c

Delta

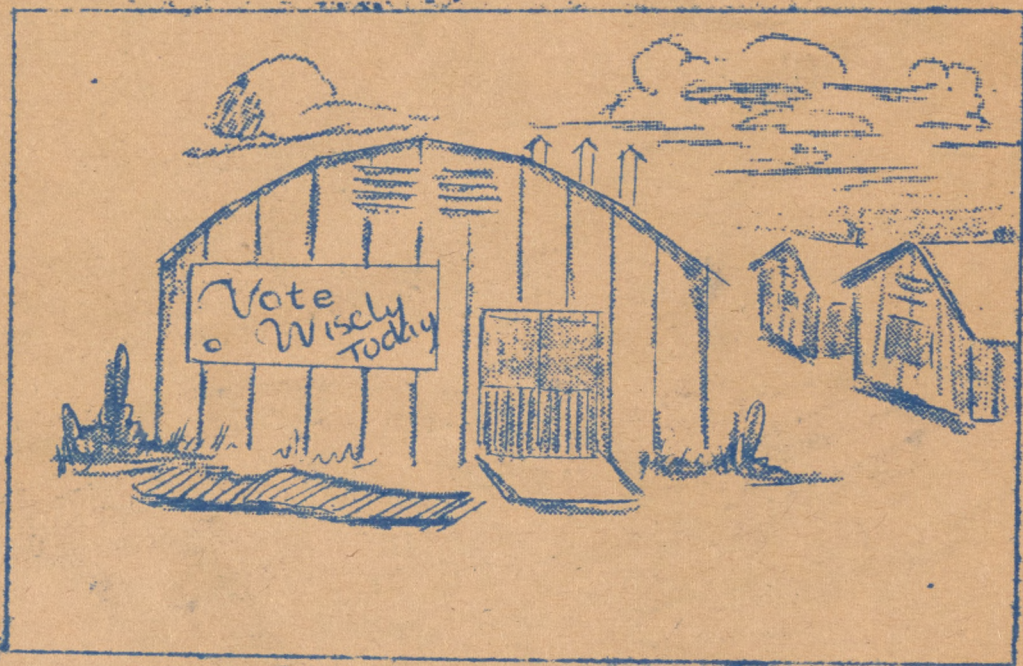
Monument

1889

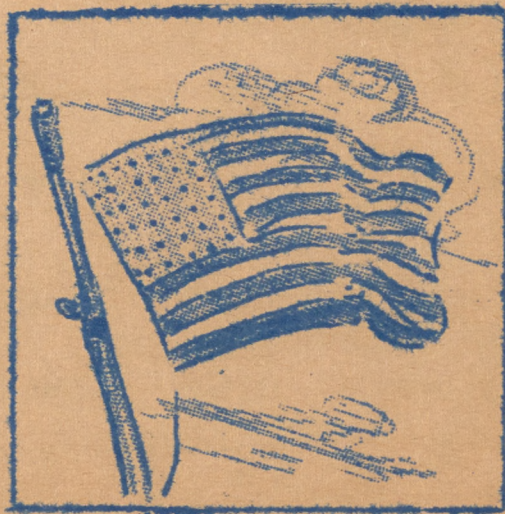
1889



Published by ★
the Annual Staff
ROHWER HIGH SCHOOL



CAMPUS VIEWS





CAMPUS VIEWS



FOREWORD

THIS YEARBOOK IS PUBLISHED FOR YOU SENIORS OF ROHWER CENTER HIGH SCHOOL WITH THE HOPE THAT IT WILL AFFORD YOU, THE GRADUATES, MANY PLEASANT MEMORIES OF THOSE DAYS OF FUN AND WORK WHICH MADE UP THE FINAL YEAR OF YOUR HIGH SCHOOL CAREER HERE IN ROHWER RELOCATION CENTER. THE STAFF HOPES THAT THIS YEARBOOK WILL REMIND YOU NOT ONLY OF OUR SCHOOL, STUDENTS, AND FACULTY, BUT WE ALSO HOPE THAT IT WILL REMIND YOU OF OUR THEME, THE MISSISSIPPI RIVER, AS A SYMBOL OF LIFE AND PERPETUAL FORWARD MOTION. YOU, THE GRADUATES OF ROHWER CENTER HIGH SCHOOL, ARE AN IMPORTANT PART IN THE LIFE OF THIS NATION AS THE GREAT MISSISSIPPI RIVER IS AN IMPORTANT LINK IN THE NATION'S LIFE LINE. AS THE RIVER IS ALWAYS MOVING FORWARD, YOU TOO WITH STRENGTH WILL MOVE FORWARD AND WILL NEVER TURN BACK.

ALTHOUGH IT IS IMPOSSIBLE TO CATCH EVERY PHASE OF STUDENT ACTIVITY, THE STAFF HAS TRIED TO PRESENT THE HIGH SPOTS OF YOUR SCHOOL LIFE HERE IN ROHWER. WE, THE STAFF, HOPE THAT MANY YOUTHFUL MEMORIES WILL BE RECALLED IN THE YEARS TO COME AS YOU LOOK THROUGH THESE PAGES.

THE EDITOR

DEDICATION

This Yearbook is Dedicated to the
Sponsors of the Senior Homerooms.

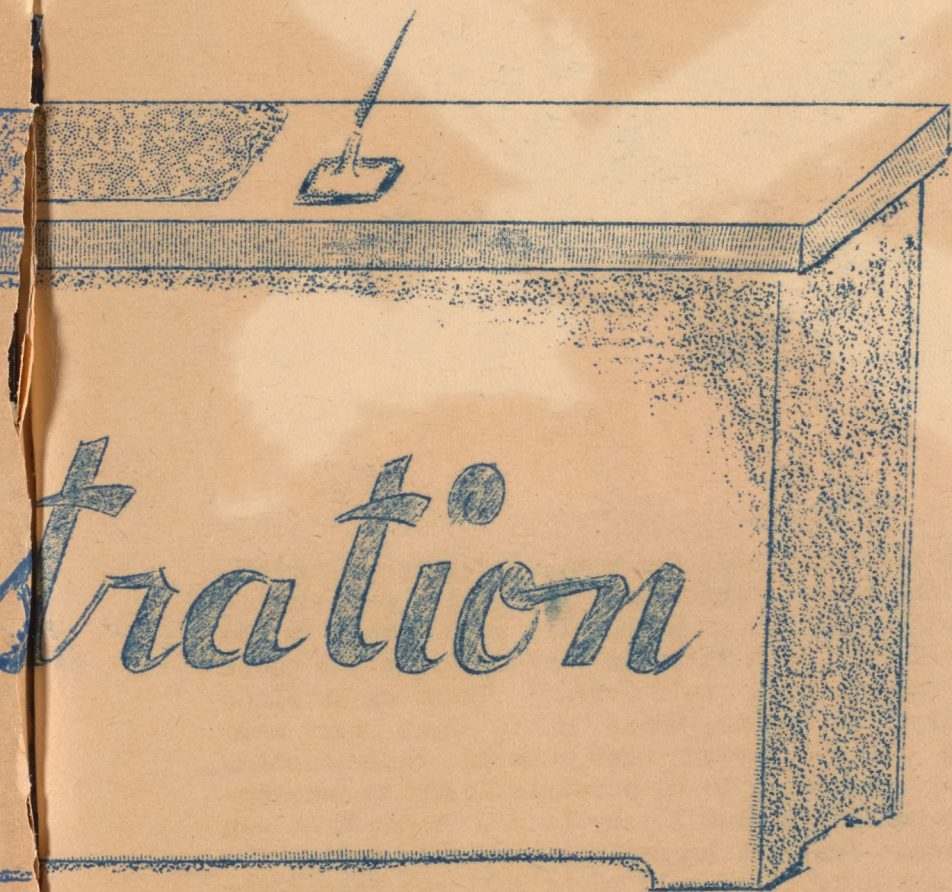
Mrs. Louise H. Beasley

Mr. David L. Cook

Mrs. Martha S. Gublo

Mrs. Mildred B. Howell







Now that the time has come for you, our seniors, numbering more than one hundred and fifty, to receive your diplomas and go forth to carve a niche for yourselves in the world, it is well for each to pause and consider the question, "what is my place in this world?" Those whose minds are full of fears and doubts, those whose plans were made but wrecked by the evacuation must rebuild their castles stone by stone. It is easy to be pessimistic and to seemingly justify that pessimism, but I say to you today that you are to be envied. You are beginning your career on the threshold of a new era. The whole world will see tremendous changes within the next ten years. The end of the war will see the beginning of new social and economic orders. Many new and improved industries will require thousands of workers. The hungry, war torn world must be clothed and fed. We are due to see the most tremendous changes and experiences, the greatest demand for skilled labor and professional workers of all kinds that the world has ever known. Are you ready to do your part in this world?

218m. Mr. Beasley

MR. J. A. TRICE

Superintendent of Education

OPAL ALBRIGHT

Vocational Advisor

IRA HOLLAND

Physical Education Advisor

OFFICE STAFF

MRS. MARY SHIMIDZU

MISS ELSIE SUZUKI

MRS. MITSUKO MATSUMOTO

FACULTY

MISS ALICE ALGER
MISS FRANCES ALMS
MR. TERUO BAISHIKI
MISS REBECCA BANKS
MRS. LOUISE BEASLEY
MISS GUY BROWN
MISS LENA MAE CAMPSTER
MR. ALTON COLE
MR. DAVID L. COOK
MISS ELLENE W. COOPER
MISS SHIZUKA EYA
MR. ED FUJITANI
MRS. JOHN GUBLO
MISS EMIKO HATASHITA
MR. TAK HATTORI
MR. KENJI HORIUCHI

MRS. MILDRED BLAND HOWELL
MISS MICHII IIDA
MISS PEARL REED JACKSON
MISS MABEL ROSE JAMISON
MR. FRANK KAMADA
MISS MATTIE LOU LEFLAR
MISS KIKU MORITA
MR. SHIGEKAZU NAKABAYASHI
MR. RYUZO OGURA
MISS LEOLA PARSLEY
MR. BENJAMIN DWIGHT RAMSDELL
MRS. MATAILEEN RAMSDELL
MR. BARRY SAIKI
MISS ELAINE SIMPSON
MISS MASAKO TABUCHI
MISS MARGARET TOMIOKA

MR. HIROSHI UYEHARA

Senior

Class



Bob Sasaki
PRESIDENT

SENIOR

Joe Matsuo
VICE PRESIDENT

Bonnie Masuda
SECRETARY

Hank Okano
TREASURER

OFFICERS





YOSHIKO IHARA
 Alias "YOSHI"
 13-7-A
 Home Economics
 Glee Club
 Excelsior Union High School

INA ISHIDA
 33-1-F
 Commercial
 Chrmn. of Know Yourself Club
 National Honor Society
 Lodi Union High School

FUMIYE HARA
 Alias "FUMI"
 10-8-F
 Commercial
 Needlecraft Club
 Lodi Union High School

KAY AOCHI
 Alias "OUCHI"
 14-10-A
 Commercial
 Glee Club
 Belmont High School

NELLIE MIKIYE HATADA
 Alias "NELL"
 23-11-C
 Commercial
 Know Yourself Club
 Lodi Union High School

MITSUYE ITO
 Alias "MITSZIE"
 19-10-F
 Home Economics
 Pres. of Outdoor Club
 Stockton High School

BETTY LU HUNTER
48-Apt. 22
Languages
Secretary of H.R.
Associate Ed. of Hi-Lites
National Honor Society

KAYOKO HONDA
Alias "TONIE"
6-4-F
Commercial
Feature Ed. of Hi-Lites
Belmont High School

YURIKO FUJIKAWA
Alias "YURI"
16-7-F
Home Economics
Shop Club
Belmont High School

RUTH ASAWA
13-11-A
Vocational
National Honor Society
Sketch Club
Excelsior Union High School

MITSUKO HATTORI
Alias "MITS"
19-8-D
Science
Bird Study Club
Stockton High School

DOROTHY ESHIMA
Alias "DOTTY"
33-3-F
Commercial
Girls' Glee Club
Lodi Union High School

HARUKO BABA
Alias "HARKY"
16-12-A
Home Economics
Girls' Glee Club
Excelsior Union High School

KIMIE ICE
Alias "KIM"
16-8-B
Academic
Needlecraft Club
Montebello Sr. High School

JANE IIDA
14-4-E
Science
News Ed. of Hi-Lites
Secretary of Nat'l Honor Soc.
Belmont High School

PEGGY EYA
15-10-D
Commercial
President of Needlecraft
Needlecraft Club
Gardena High School

AYA CHINO
4-5-A
Commercial
President of Service Club
Service Club
Inglewood High School

KAZUKO IRENE FUKUSHIMA
20-12-E
Primary Education
Classical Music Club
Montebello Sr. High School

TERUMI HARUTA
15-7-F
Home Economics
Service for Girls Club
Torrance High School

CHUCK FUJIKAWA
Alias "CHUCKIE"
16-7-F
Vocational
Unclassical Music Club
Compton J.C.

JAMES T. HARADA
17-11-B
Art
Camera Club
Excelsior Union High School

YUKIO HOJO
2-11-F
Commercial
Hi-Y
Redondo Union High School

FRANK T. IWAMIYA
25-9-E
Science
Lodi Union High School

KAZUO JACK FURUYA
29-7-A
Industrial
Model Airplane Club
Downey High School

HIROSHI ITO
Alias "HIPPO"
19-10-B
Vocational
Soil Analysis Club
Stockton High School

TADAO FUJIOKA
25-4-C
Science
Chemistry Experiment Club
Lodi Union High School

GEORGE ASAWA
20-4-E
Academic
Knights Club
Latin Club
Excelsior Union High School

TOMOHISA FUKUYA
1-2-A
Commercial
Student Council Rep.
Speech and Debate Club
Redondo Union High School

MELVIN M. FUKUMOTO
19-9-C
Mathematics
Hi-Y
Lodi Union High School

SAM ICHIBA
25-8-B
Art
Athletic Mgr. of Home-room.
Hi-Y
Lodi Union High School

KENNETH FUKUSHIMA
26-7-D
Academic
Horse Shoe Club
Stockton High School

MASAYUKI ISHIHARA
9-2-D
Academic
Stockton High School

TOSHIO IWATA
Alias "TOSH"
13-3-D
Commercial
Hi-Y
Excelsior Union High School

KENZO FUJII
40-10-E
Academic
Soil Analysis Club
All-Star Basketball
Stockton High School

RAY Y. HIKIDA
5-4-F
Industrial Arts
Knights
Belmont High School

JAMES T. HATADA
23-11-D
Commercial
Fishing Club
Lodi Union High School

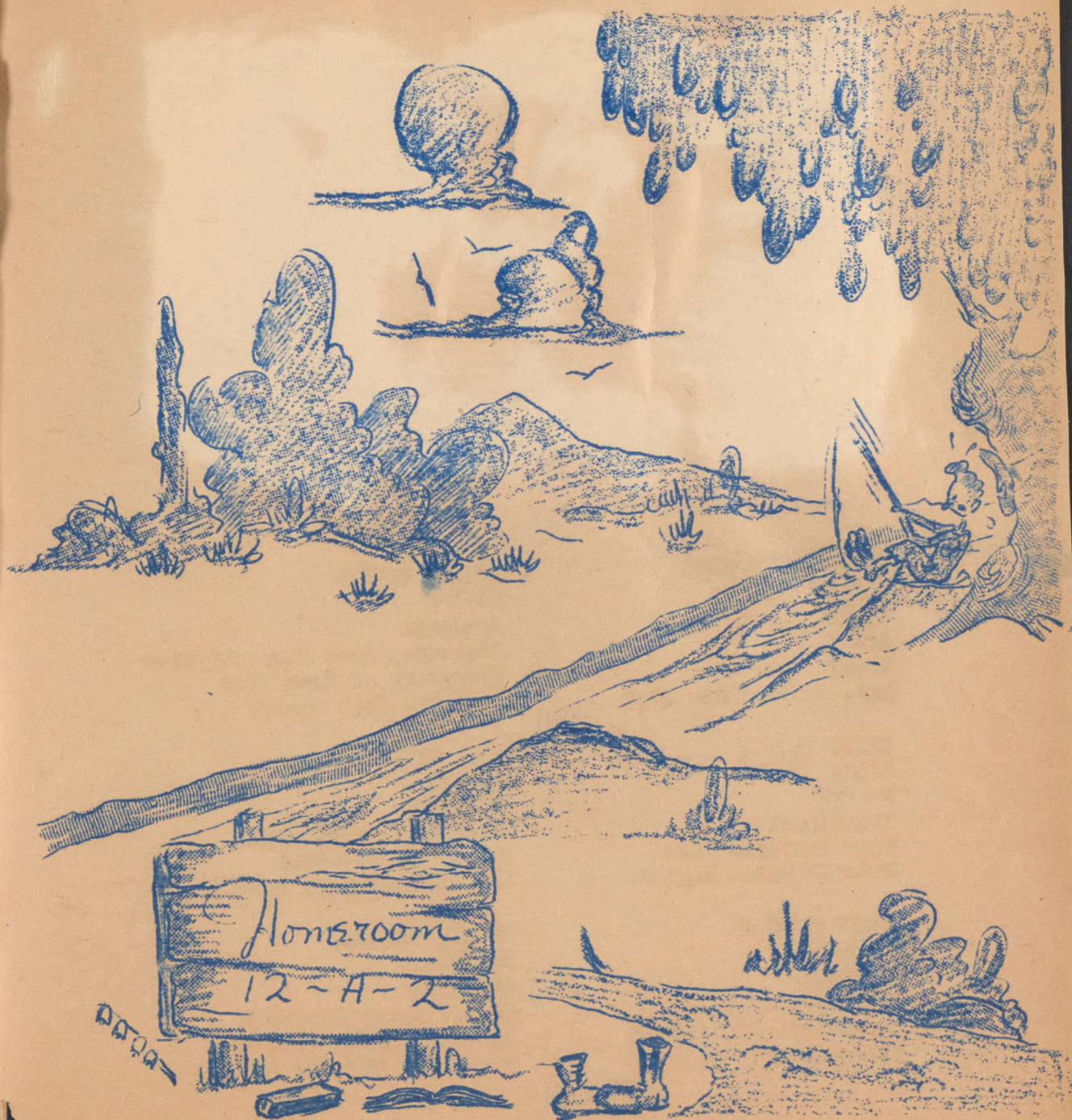
JUSO ARIMA
Alias "JUICE"
1-6-E
Science
Vice-Pres. of Homeroom
Louzinger High School

YOSHIO AIKAWA
33-1-F
Science
President of Homeroom
Hi-Y
Technical High School

*** Message ***

You must take immeasurable joy in realizing that your heritage is in a country that has the most perfect machinery for self-government in existence. But you likewise are heavily charged with the responsibility of keeping this machinery functioning smoothly. It will run perfectly if WE who keep it in motion understand how all of its various parts function, and if we work as skilled artisans, not blunderers, at our separate tasks. You must develop your capabilities and discover your limitations to find where at this machine you can work most happily and efficaciously. If certain parts are out of balance at times, it is because WE who operate it have mishandled some intricate piece of its mechanism.

Louise H. Beasley



TERUMI HARUTA
15-7-F
Home Economics
Service for Girls Club
Torrance High School

CHUCK FUJIKAWA
Alias "CHUCKIE"
16-7-F
Vocational
Unclassical Music Club
Compton J.C.

JAMES T. HARADA
17-11-B
Art
Camera Club
Excelsior Union High School

YUKIO HOJO
2-11-F
Commercial
Hi-Y
Redondo Union High School

FRANK T. IWAMIYA
25-9-E
Science
Lodi Union High School

KAZUO JACK FURUYA
29-7-A
Industrial
Model Airplane Club
Downey High School

HIROSHI ITO
Alias "HIPPO"
19-10-B
Vocational
Soil Analysis Club
Stockton High School

TADAO FUJIOKA
25-4-C
Science
Chemistry Experiment Club
Lodi Union High School

GEORGE ASAWA
20-4-E
Academic
Knights Club
Latin Club
Excelsior Union High School

TOMOHISA FUKUYA
1-2-A
Commercial
Student Council Rep.
Speech and Debate Club
Redondo Union High School

MELVIN M. FUKUMOTO
19-9-C
Mathematics
Hi-Y
Lodi Union High School

SAM ICHIBA
25-8-B
Art
Athletic Mgr. of Home-room.
Hi-Y
Lodi Union High School

KENNETH FUKUSHIMA
26-7-D
Academic
Horse Shoe Club
Stockton High School

MASAYUKI ISHIHARA
9-2-D
Academic
Stockton High School

TOSHIO IWATA
Alias "TOSH"
13-3-D
Commercial
Hi-Y
Excelsior Union High School

KENZO FUJII
40-10-E
Academic
Soil Analysis Club
All-Star Basketball
Stockton High School

RAY Y. HIKIDA
5-4-F
Industrial Arts
Knights
Belmont High School

JAMES T. MATADA
23-11-D
Commercial
Fishing Club
Lodi Union High School

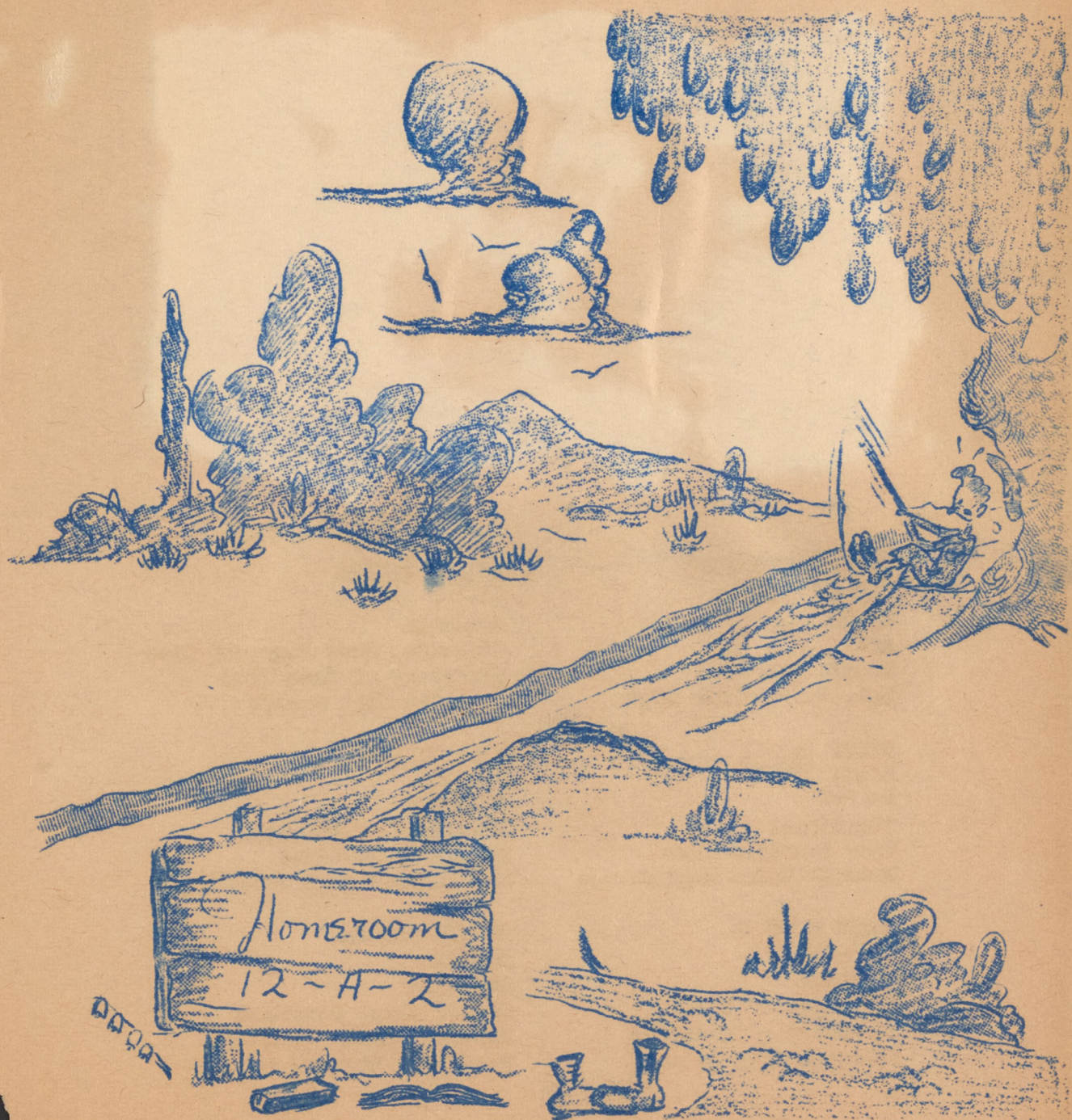
JUSO ARIMA
Alias "JUICE"
1-6-E
Science
Vice-Pres. of Homeroom
Leuzinger High School

YOSHIO AIKAWA
33-1-F
Science
President of Homeroom
Hi-Y
Technical High School

*** Message ***

You must take immeasurable joy in realizing that your heritage is in a country that has the most perfect machinery for self-government in existence. But you likewise are heavily charged with the responsibility of keeping this machinery functioning smoothly. It will run perfectly if WE who keep it in motion understand how all of its various parts function, and if we work as skilled artisans, not blunderers, at our separate tasks. You must develop your capabilities and discover your limitations to find where at this machine you can work most happily and efficaciously. If certain parts are out of balance at times, it is because WE who operate it have mishandled some intricate piece of its mechanism.

Louise H. Beasley





KINUYE MORIMITSU
 Alias "KINU"
 29-12-A
 Art
 Needle Craft
 L.A. Polytechnic High

MITTY MATSUI
 Alias "MITS"
 1-12-F
 Vocational
 Know Yourself Club
 Redondo Union High School

MARIE MITSUDA
 23-6-F
 Academic
 President of G.A.A.
 Secretary of Termites
 Stockton High School

YUKIKO KIMURA
 34-3-C
 Academic
 Chairman, Know Yourself Club
 Secretary of Home Room
 Stockton High School

LILY KOYAMA
 38-8-D
 Academic
 President of Termites
 Editor of Hi-Lites
 Los Angeles High School

BONNIE MASUDA
 3-11-D
 Academic
 Senior Class Secretary
 National Honor Society
 Roosevelt High School

TAYEKO KUWABARA
10-9-D
Vocational
Vice President of Coed Club
Glee Club
Lodi Union High School

HATSUMI JINDE
Alias "HATSY"
29-8-A
General Business
Classical Hour
Excelsior Union High School

SACHIKO MIYAHARA
Alias "SACHI"
12-11-F
Vocational
Classical Hour
S.F. Girls High School

YOSHIKO KIKUCHI
14-1-D
Academic
Treasurer of Homeroom
National Honor Society
L.A. Polytechnic High

SETSUKE KOBAYASHI
Alias "SETS"
5-9-A
Vocational
Classic Club; G.A.A.
Roosevelt High School

AIKO MITORI
Alias "IDA"
19-11-C
Academic
Bird Study and Hiking
Escalon Union High School

HANAE KAKEHASHI
Alias "HANNAH"
16-5-F
Academic
Glee Club
Gardena High School

HATSUMI KISHI
33-5-D
Special
Needle Craft
Stockton High School

FUMIYE MIYAMOTO
Alias "FUMI"
2-8-F
Vocational
Termites
Gardena High School

FUSAKO KAWAI
Alias "FOO"
1-3-A
Home Economics
Termites, G.A.A.
Gardena High School

YONEKO KAWAGUCHI
Alias "YONE"
29-2-F
Home Economics
Glee Club
Downey Union High School

HISAKO KOSAKA
25-8
Commercial
Secretary of Home-room
National Honor Society
Lodi Union High School

MARIE KURAMOTO
10-2-A
Science
Reporter of Coed Club
Glee Club
Lodi Union High School

FUMIKO MOMONOI
32-1-A
Commercial
Classic Club
National Honor Society
San Pedro High School

MARY KAWAMURA
23-10-A
Commercial
Committee Chrm. of Club
National Honor Society
Lodi Union High School

BESSIE MATSUZAWA
16-3-A
Commercial
Novelty Club
Classical Hour
Gardena High School

YUKIYE KAMEMOTO
Alias "YUKI"
29-9-F
Economics
Classical Hour
San Pedro High School

FRANK KUWABARA
Alias "FRANKIE"
24-3-C
General
Lodi Union High School

ROY KITANO
Alias "MICHAEL"
1-2-F
Academic
Boys' Club
Gardena High School

MAKOTO MIMAKI
Alias "MAC"
11-2-D
Vocational
Knights
Jefferson High School

TSUKASA MATSUEDA
25-5-A
Academic
H.R. President
Senior Council
San Mateo High School

FRANK MATSUHIRO
8-8-D
Commercial
Top Hatters
Lodi Union High School

SHIZUKO KAMIDOI
Alias "SHIZ"
41-9-F
Commercial
Bird Study and Hiking
Stockton High School

MIWAKO MIMAKI
Alias "MICHAN"
11-2-D
Home Economics
Bird Study and Hiking
Jefferson High School

AKIRA KUME
Alias "IKE"
25-3-E
Vocational
Horse Shoe Club
Lodi Union High School

FRANK MIKAMI
19-5-C
Vocational
Horse Shoe Club
Lodi Union High School

SAM KAMIBAYASHI
Alias "SAMBO"
26-9-F
Commercial
HI-Y
Stockton High School

TETSUO MATSUMOTO
28-5-A
Commercial
HI-Y
Top Hatters
Lodi Union High School

PAUL KATAOKA
Alias "PAUBLO"
5-12-B
Academic
Boy's Club
Gardena High School

BEN KANEDA
40-7-A
Academic
Student Council Rep.
National Honor Society
Stockton High School

JOSEPH MATSUO
27-6-C
Academic
Vice President of Senior Class
Vice President of H.R.
S. F. Polytechnic High School

TETSUAKI KOJIMA
7-4-C
Academic
Student Body President
Nat'l Honor Society, Pres.
Roosevelt High School

MASAMI MATSUO
40-3-F
Academic
Syncopators
Press
Stockton High School

KAZUO KAMITA
Alias "KAZ"
26-2-C
Vocational
F.F.A.
Watsonville Union High School

TAYEKO MARUNO
Alias "TAYE"
7-8-C
Commercial
Service
L.A. Polytechnic High School

KEI MINE
20-10-A
Vocational
Gardening Club
Montebello Sr. High School

★★★ Message ★★★

Soon high school days will be a memory. New fields, new faces, new friends replace the old but will not fill their places. We all met as strangers, we part as friends. Relocation gave us friends we never would have known. Be worthy of them. We will meet in unexpected times and places. The talk will be of Rohwer, the high school, the homeroom. I shall remember your kindness, your joyful chatter that gave me a lift for the day. At Siloam Springs, Arkansas, the latch string always will be out for our friends from Rohwer. Land in your helicopter and spend the week-end with us.

David L. Cook





BESSIE OUYE
28-11-F
Commercial
Home Economics
Girls' Glee Club
Lodi Union High School

MILDRED NOGUCHI
16-4-A
Stenographic
Music
Girls' Glee Club
Gardena High School

TOSHIKO MAKACANA
Alias "TISHIE"
3-3-D
Commercial
Know Yourself Club
Burbank Senior High School

KIYOKO HISHIYAMA
25-7-B
Home Economics, Commercial
Know Yourself Club
National Honor Society
Lodi Union High School

YOSHIKO OMISHI
19-8-A
Commercial
Home Economics
Know Yourself Club
Lodi Union High School

NATSUYE OKA
7-11-A
Commercial
Xinguettes
National Honor Society
Venice High School

YOSHIKO NISHIMOTO
Alias "YO"
7-7-D
Vocational
Girls' Glee Club
Roosevelt High School

ALICE MORITA
39-9-A
Commercial
Home Economics
Traveling Club
Stockton High School

HIDEKO OKA
Alias "HIDE"
12-9-C
Vocational
Girls' Glee Club
John Fremont High School

JANE NIIZAWA
28-1-A
Commercial
Home Economics
Know Yourself Club
Stockton High School

MARY NAKADA
17-6-A
Home Economics
Art
Sketching Club
Montebello Sr. High School

GRACE NAKAMURA
2-6-D
Commercial
Vice-pres. of Needlecraft
Club
Gardena High School

SUMIKO SASAKI
41-1-C
Home Economics
Commercial
Know Yourself Club
Lodi Union High School

ELSIE SATO
10-5-A
Academic, Home Economics
Girls' Glee Club
National Honor Society
Stockton High School

SALLY OKURA
19-3-C
Art, Home Economics
Sr. Social Committee Rep.
National Honor Society
Lodi Union High School

GLADYS MORINAKA
20-1-D
Home Economics
Commercial
Treas. of Needlecraft Club
Montebello Sr. High School

SHIZUYE NAKAGAWA
20-4-B
Home Economics
Commercial
Needlecraft Club
Excelsior Union Hi School

TAMAYE OKIMOTO
4-12-C
Language
Art
Let's Read Club
San Pedro High School

TOSHIKO OHATA
23-7-r
Home Economics
Sec-Treas. of H.R.
Girls' Glee Club
Lodi Union High School

ALICE NAKAMURA
23-9-A
Academic
Vice Pres. of G.A.A.
National Honor Society
Lodi Union High School

ALICE NISHIMOTO
24-3-F
Commercial
Home Economics
Girls' Glee Club
Lodi Union High School

MINORU SASAKI
33-9-A
Academic
Shop
Chemistry Experiments Club
Lodi Union High School

KIYOTO NISHIMOTO
28-3-E
Agriculture
Shop
Top Hatters
Lodi Union High School

COOLIDGE TANINO
Alias "LOBSTER"
6-7-D
Industrial Art
Grouch Club
Thos. Jefferson Hi School

MASAO NERIO
16-4-C
Academic
Shop
Speech and Debate Club
Downey Union High School

HENRY OKANO
29-9-D
Science
Treas. of Sr. Class, V.P.
of H.R., V.P. of Knights
Montebello Sr. High School

GEORGE OMOTO
29-5-F
Mechanical Drawing
Mathematics
Knights
Excelsior Union High School

HIROFUSA OKUMURA
5-2-D
Mathematics, Science
Home Room President
Hi-Y
San Pedro High School

EDWARD OSUGI
38-8-B
Mechanical Drawing
Mathematics
Hi-Y
Woodrow Wilson High School

ISAMU SAGARA
41-11-B
Agriculture
Mathematics
Hi-Y
Lodi Union High School

GEORGE NARITOKU

13-12-C

Agriculture

Commercial

Propaganda Club

Garden Grove Union H.S.

BOB SASAKI

19-1-C

Vocational

Sr. Class Pres., Cavaliers

National Honor Society

Lodi Union High School

KATSU OSHIMA

8-3-A

Shop, Drafting

President of Art Club

Knights

Lodi Union High School

YUZO SAKURADA

Alias "WEASEL"

11-10-C

Academic

Feature, Press

Los Angeles High School

GEORGE OTSUBO

9-9-F

Academic

Mathematics

Grouch Club

Stockton High School

TERUO "BEN" NAKASHITA

6-11-B

Shop

Commercial

Fishing Club

Compton High School

JOEY NOMA

40-11-D

Academic, Shop

Student Council Rep.

Vice President of Hi-Y

Mt. Diablo Union Hi School

SONOKO SATO

10-6-B

Academic

Pres. of Coed Club

Travel Club

Stockton High School

HARUO OKUMURA

8-12-D

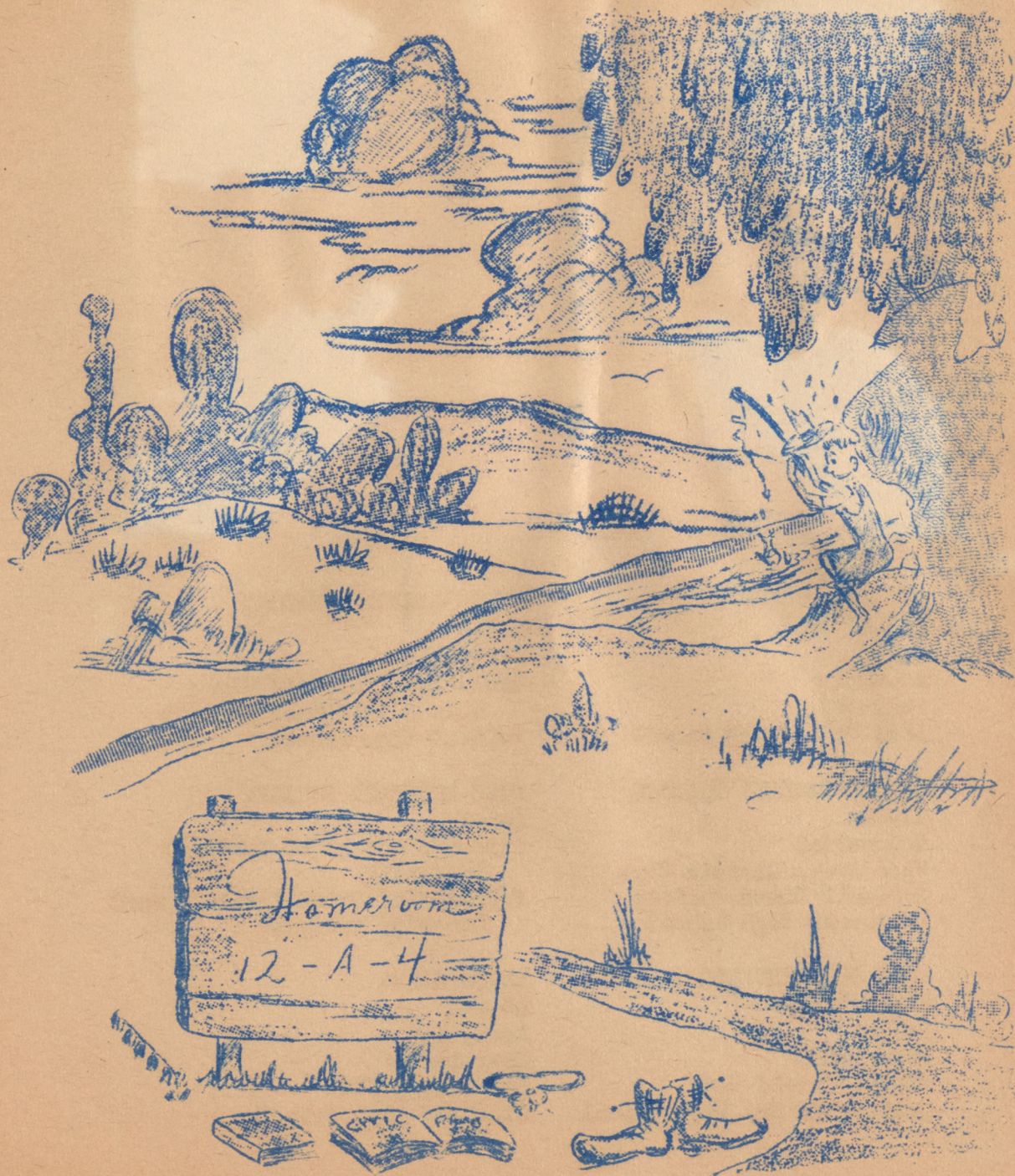
Mechanical Drawing

Lodi, California

*** Message ***

"As a man thinketh so is he." There are four principal fundamentals in all educational practices, Scholarship, Character, Leadership, and Service. Our purpose should be to hold these objectives above everything else as goals toward which we work; we must form the structure of our education so that it will hold firm and true to these purposes of life. Scholarship is the power of mind to dispel ignorance and superstition through scientific application of truth. Leadership is the power of personality to set the pace of man's progress. Character sets the seal of true value on each endeavor. Service is the beginning and end of our complete education.

Martha Galt-





TEIKO TAKAMUNE
 Alias "TEI"
 8-4-A
 Academic
 Music Club
 Lodi Union High School

YONEKO "BONES" TASHIRO
 12-2-A
 Commercial
 Vice Pres. Classic Club
 National Honor Society
 Roosevelt High School

MARY SHIMOTSUKASA
 Alias "JITS"
 3-3-F
 Commercial
 Know Yourself Club
 Montebello Sr. High School

YURI "ROMNIE" SENZAKI
 5-8-A
 Commercial
 Pres. H.R., Classic Club;
 V.P. Nat'l Honor Society
 Belmont High School

MISS MARGARET TOMIOKA
 6-6-D
 Lipson's School of Costume
 Designing
 Formerly associated with Howard
 Greer's, Designer

MAYKO SHIGA
 40-8-A
 Academic
 Shorthand
 Needlework Club
 Stockton High School

TAKAKO WADA

19-1-F

Commercial and Home Ec.

Secretary of Homeroom.

Know Yourself Club

Lodi Union High School

HELEN TAKAHASHI

8-6-C

Commercial

Study Hall Club

Stockton High School

MARIAN TAKE YAKAHI

11-11-A

Commercial

Student Council Rep.

Classic Club

L.A. Polytechnic High School

ALICE WAKABAYASHI

6-11-E

Stenographic

Secretary Classic Club

National Honor Society

Thos. Jefferson High School

TERUKO YAKUSHIJI

Alias "TERRY"

8-8-F

Commercial

Classic Club

Galt High School

YONEKO YAMADA

Alias "YONE"

40-7-C

Academic

Girls' Glee Club

Stockton High School

KAZUKO YOSHINO

Alias "KAZ"

38-9-F

Commercial

Classic Club

Thos. Jefferson High School

ETHEL TSUTSUMI

10-1-D

Home Economics

English

Travel Club

Lodi Union High School

SAKAYE SHIRAGA

Alias "SAK"

16-6-F

Commercial

Classic Club

Thos. Jefferson High School

GRACE TANAKA

Alias "GRACIE"

41-9-B

Home Economics

Know Yourself Club

Lodi Union High School

MARY YASUHIRO

Alias "TUNA"

2-7-A

Commercial and Home Ec.

Girls' Glee Club

Narbonne High School

MARY SHIMADA

28-11-A

Commercial

Girls' Glee Club

Lodi Union High School

BOB IZUMI
13-2-A
Commercial
Photography Club
Roosevelt High School

MAY YASUDA
Alias "SETS"
2-9-D
Stenographic
Classic Club
Dorsey High School

TAKEO KANESHIRO
Alias "TAK"
16-3-B
Mathematics
Propaganda Club
Belmont High School

KIMIYO YABUKI
Alias "KIM"
17-8-D
Home Economics
Lot's Read Club
Excelsior Union High School

TSUNEKO SUGII
15-11-A
Home Economics
Needlecraft Club
Gardena High School

GEORGE "BUCK" TANJI
33-2-F
Academic
Social chrm. of Home-room.
Soil Analysis Club
Stockton High School

HATSUKO SUGITA
Alias "HOTTY"
20-7-C
Commercial
Handicraft Club
Excelsior Union High School

CHOYE SUGITA
20-7-C
Vocational
Pres. Photography Club
National Honor Society
Excelsior Union High School

HELEN TAMAKI
5-6-A
Academic
Classic Club
University High School,
West Los Angeles

WILLIAM TSUSAKI
Alias "WILLIE"
23-9-E
Academic
Boys' Club
Lodi Union High School

TAEKO YAMASAKI
Alias "TAE"
28-5-C
General Course
Know Yourself Club
Alameda High School

RAY TAMURA
24-10-B
Academic
Boys' Club
Lodi Union High School

MASATO YAMASHITA
Alias "MAS"
23-5-E.
Vocational
Boys' Club
Lodi Union High School

GEORGE SUZUKI
33-1-A
English
History
Soil Analysis Club
Stockton High School

HENRY YOSHITAKE
Alias "HANK"
12-1-A
Math and Science
HI-Y
Roosevelt High School

HIROKI "HICK" YASUTAKE
15-12-A
Art
Vice President, Home Room
HI-Y
Gardena High School

JOHN YAGUCHI
Alias "JOHNNY"
32-4-C
Math and Science
Syncopators Club
L.A. Polytechnic High School

TOMMY YAMASAKI
29-6-C
Vocational
Knights
Excelsior Union High School

ROY SUGIMOTO
14-7-C
Mathematics
Science
Chemistry Club
Washington High School

*** Message ***

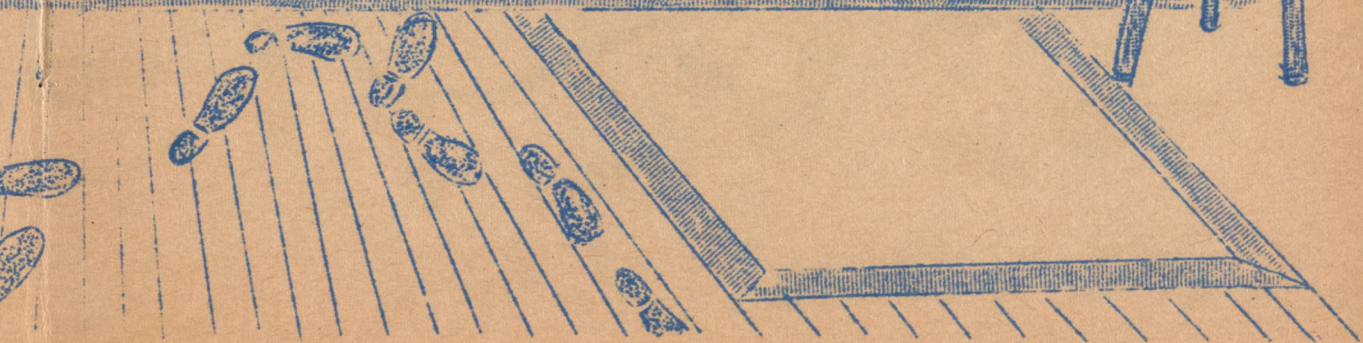
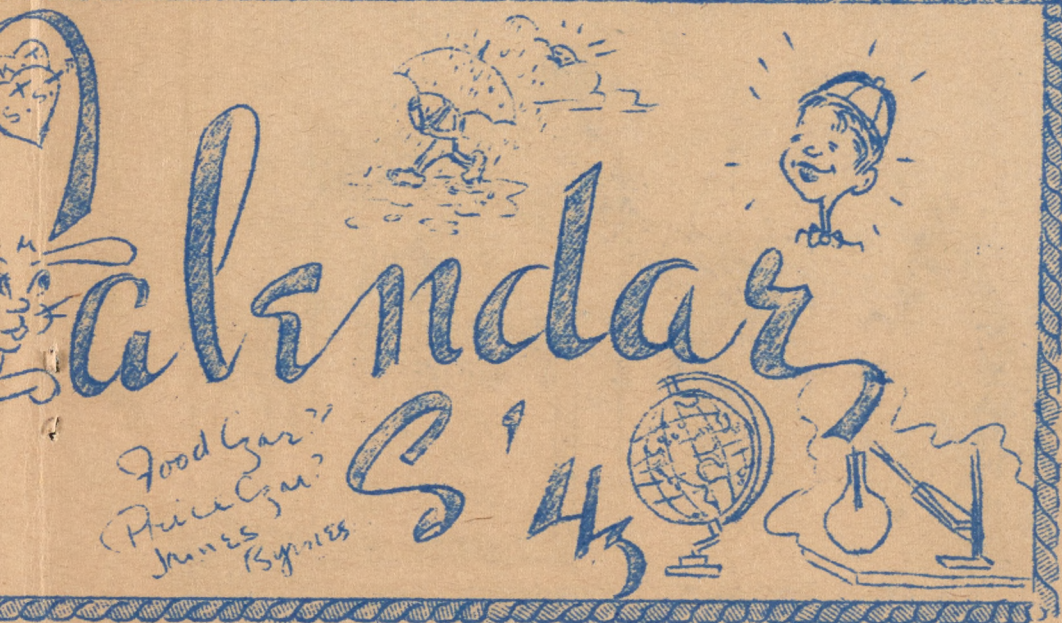
Each of you has my best wishes for the success of every worth while dream and ambition you may have. Although the experiences of life may not always be what we plan, there is always some good mixed with the bad. May each of you take the best of your life from your experiences in Rohwer Center High School and use it in building a happy, successful future. My association with you is one of happiest and richest experiences of my life. Good luck!



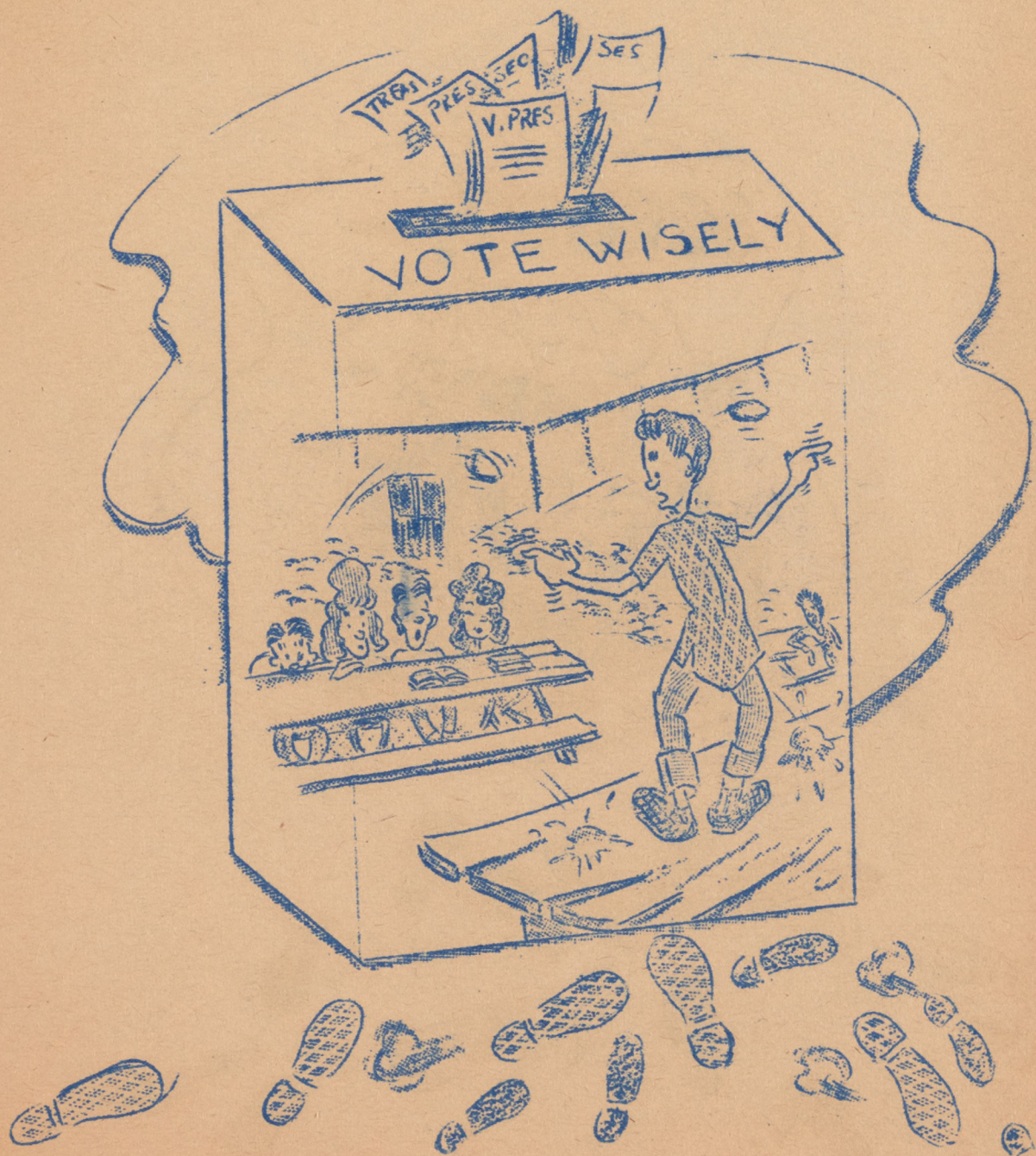
WHEN DO



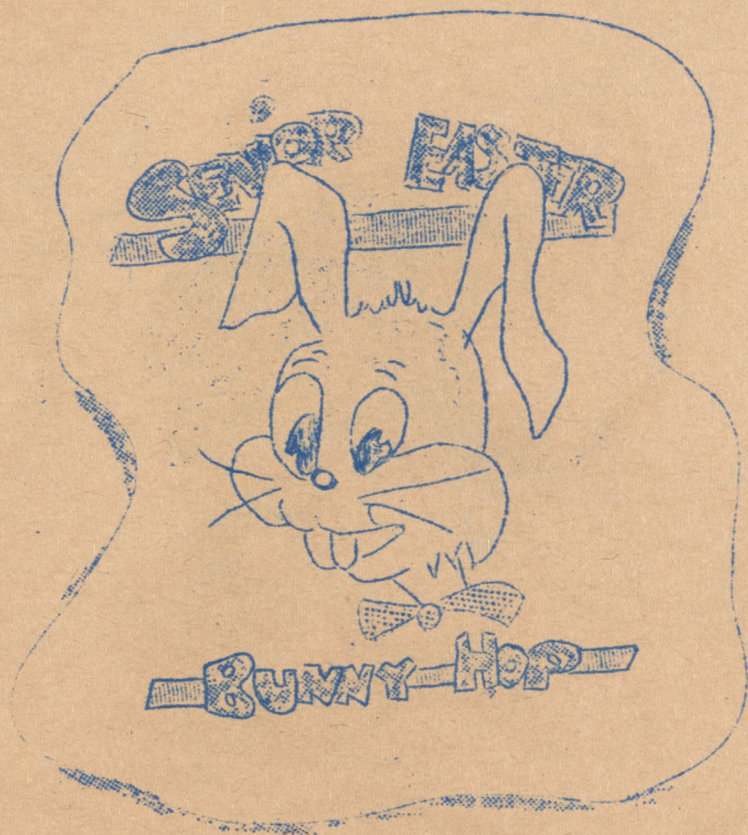
DO WE EAT ???











SADIE HAWKINS



admit one





24
Senior
Farewell
DANCE
♪







Exams

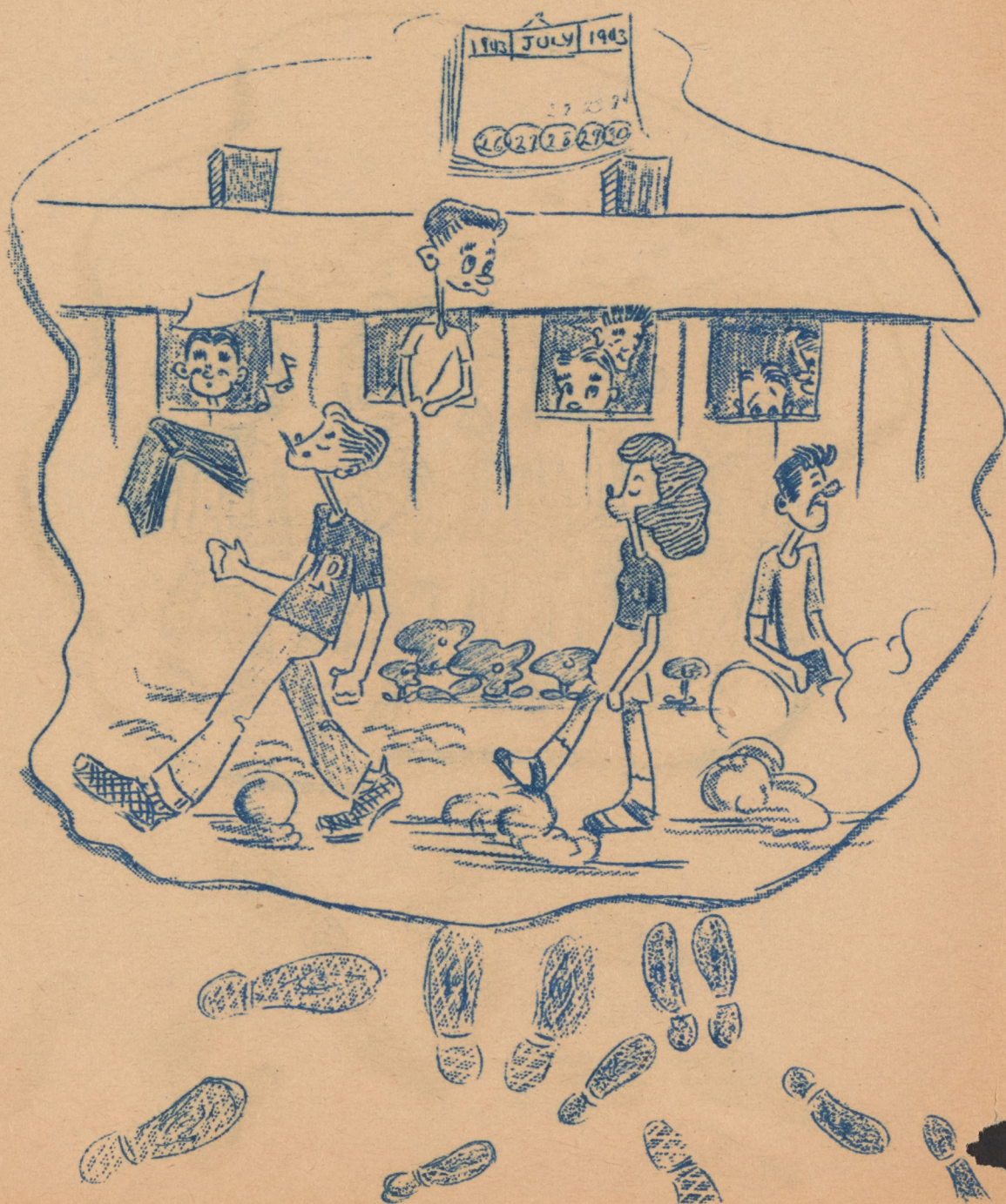


CENSORED

















Popular

Tets
Kojima

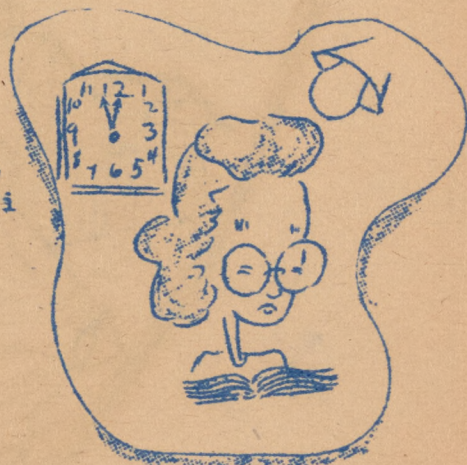
Bonnie
Masuda



Studios

Tom
Fukaya

Fumiko
Momonoi



Musical

Sam
Ichiba

Sally
Okura





Athlete

Sam
Ichiba

Toshiko
Ohata



Sport

Yosh
Aikawa

Yoneko
Tashiro



Quirt

Sam
Kamibayashi

Ida
Mitori





Tosh
Iwata

Cute

Alice
Wakabayashi



Tets
Kojima

Brainy

Fumiko
Momonoi



Bob
Sasaki

Personality

Bonnie
Masuda





Hank
Okano

Smile[★]

Aya
Chino



Tets
Matsumoto

Neatness

Sonoko
Sato



Sam
Ichiba

Artistic[★]

Ruth
Asawa



Dancer



Tets
Kojima

Toni
Honda



Witty



Tsukasa
Matsueda

Jane
Iida



Figure



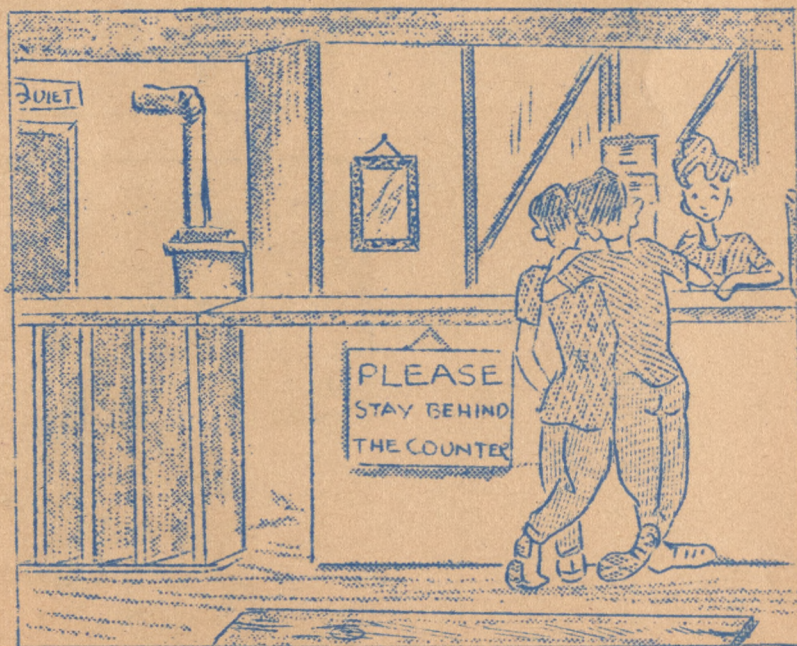
Sam
Iida

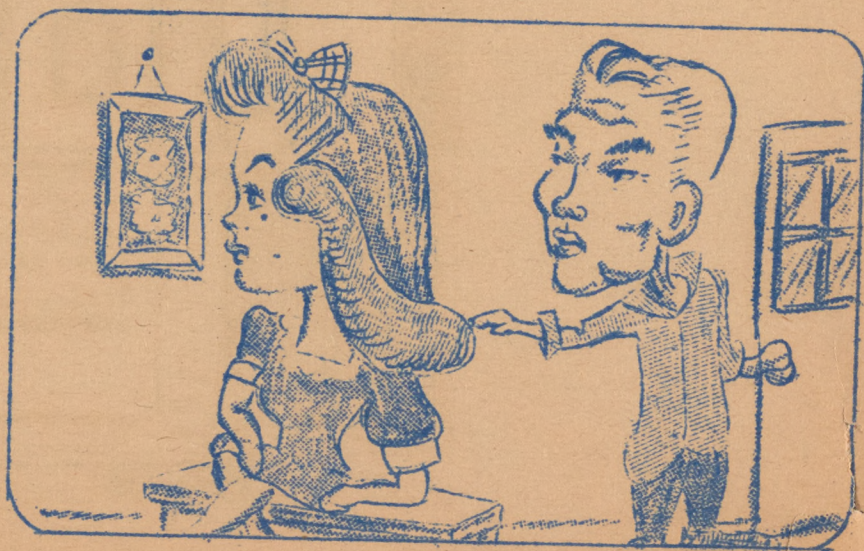
Yoshiko
Kikuchi

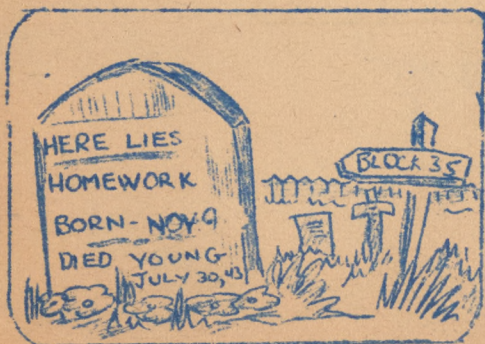
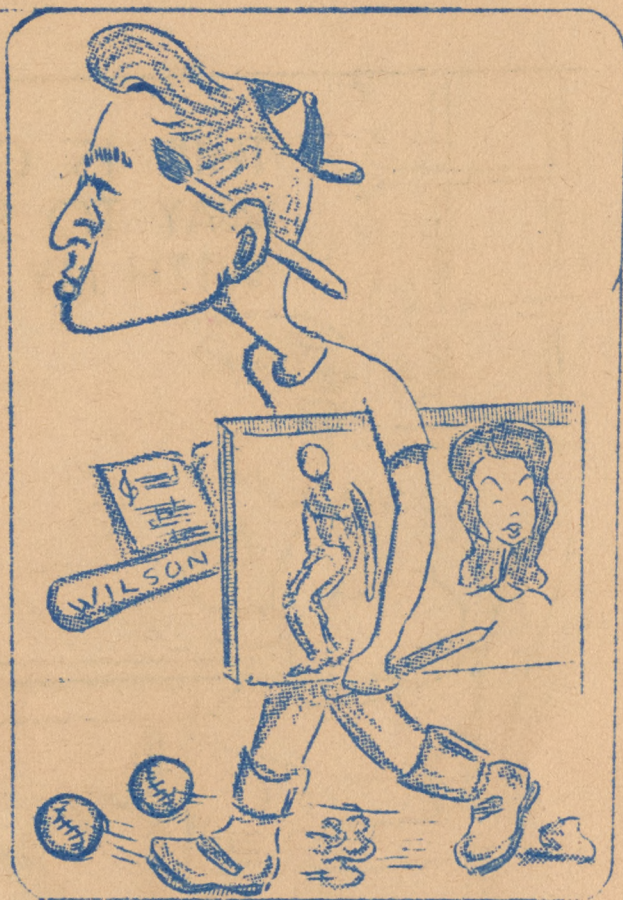


RESERVED FOR YOUR
OWN SNAPSHOT.

CANDID SHOTS

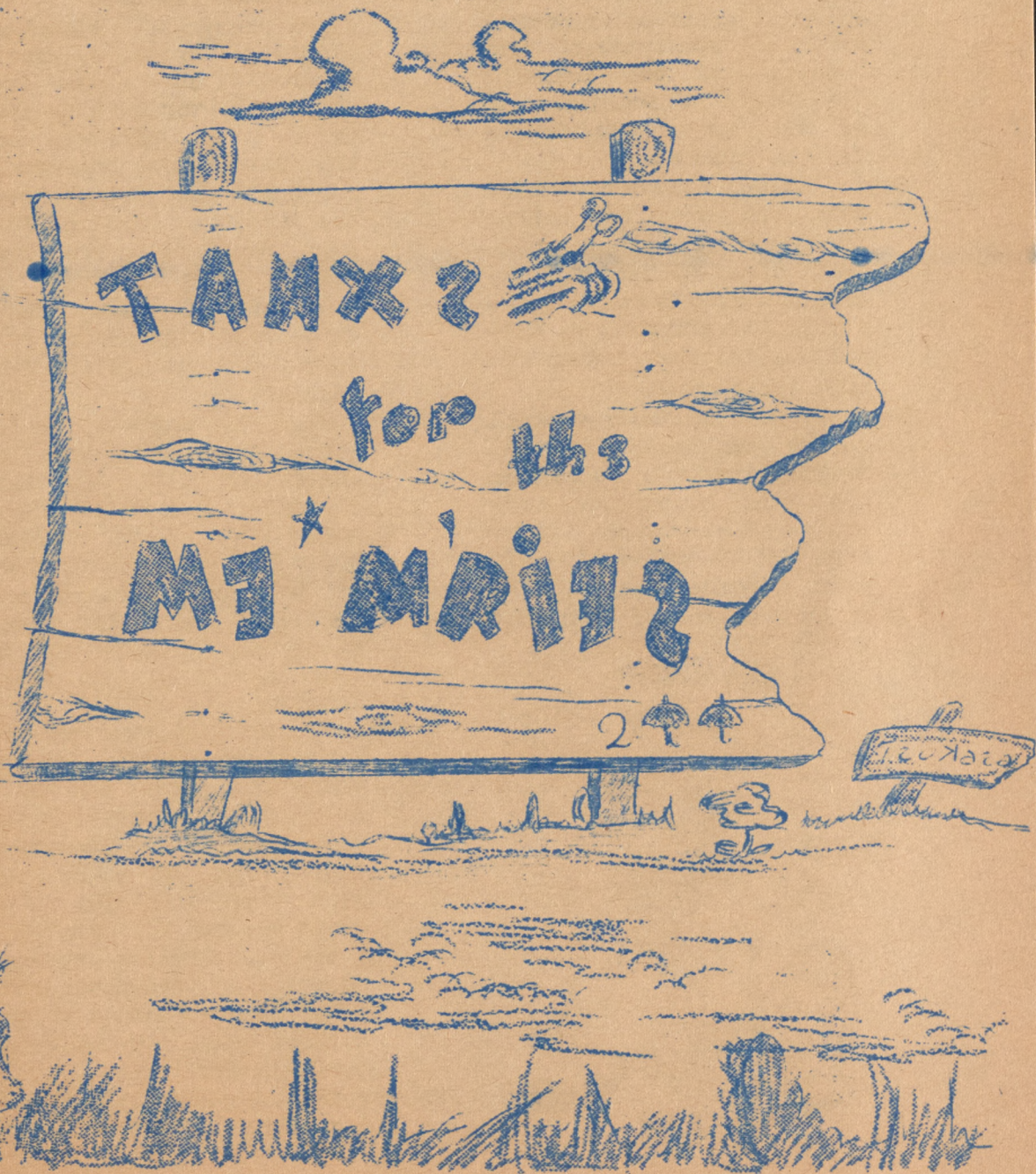






THIS IS ONE
WAY TO STAY
WITH MY STUDIES





July 14, 1942..Education Dept. appoints J. A. Trice as the superintendent of education, as first step toward the "misery" of the incoming "Californy" students....One of the more lucky breaks for the students.

Sept. 8...Guy Blakey appointed principal of high school but develops "stomach ailment" after one look at the camp. Jerome's Wm. E. Beasley is transferred to Rohwer....Loss for Jerome is gain for Rohwer.

Sept. 20-Oct. 15....Pre-school survey and census taken. Preliminary registration begins in respective mess halls. Or----black letter days for the students. Is that why a couple of mess halls were burned down that day???????



Nov. 2-8..Pre-school teacher's conference is held by the first group of teachers planning torturous, weary, miserable, and black days for the ever working students. Mr. Hitler's and Mr. Mussolini's conference for world conquest at Brenner Pass was mere child's play compared to the plotting of these teachers.

Nov. 9..."School days, school days, dear ole' golden rule days." Phooey!...Yipo, real teachers.

Nov. 26...This day was Thanksgiving day, but we went to school for half a day. Teachers felt generous so they managed to give the students their precious three hours in the afternoon. Wasn't that very nice of the faculty members?? Remind me to send them a box of razberries.

Dec. 23-Jan. 4....Students are let off from school for two weeks to observe the holidays and get away from the mud. Thanks, Education Dept., that two weeks was just long enough for me to clean the mud off my shoes.

Jan. 12-13....Seniors sponsor an assembly. Homeroom presidents are introduced to the student body. Why boast so much, Joe?????????

February...Construction of the new library started. Where

is the gym?? Library's the same ole' barrack with more windows in. Our hats off to the Engineering Dept.

March 1-6...Students are let off one week in order that teachers may register center residents for leave clearances.

March 18..."Amidst the roar and the flash of lightning and thunder, and in the midst of the full fury of an Arkansas storm" our first open house was held. By the way, did you see half of the exhibit floating by????????



March 19..."First successful" dance sponsored by the 11A-1's honoring St. Patrick's Day. Orchids to Miss Simpson and her class!

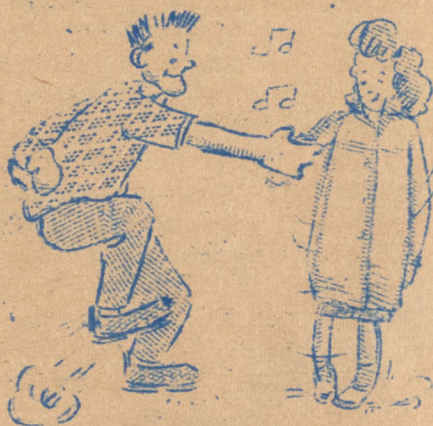
March 20...Graduation..Big dayfor the school. At last we got rid of those seniors.

March 24...Basketball play-off.

Sophomores defeat seniors..

"Smooth" Hank Oga and "Rugged" Shig Ohata lead team to victory. Go hide your heads in shame, seniors!

March 26...Commemorating their four years in high school, seniors hold their final dance. Good luck to you, seniors.



Because 98% of the students rated "A" averages, National Honor Society, of McGohee Branch, is set up in here. To think I was one of the other 2%.

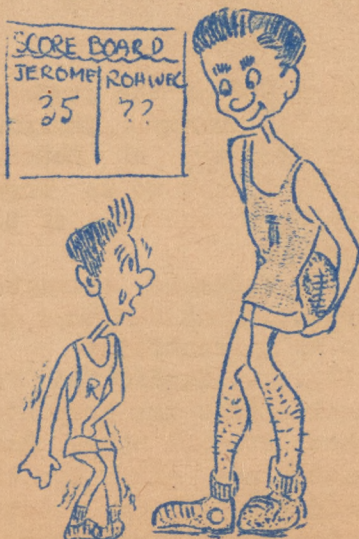
March 27.....Second semester starts....What already! Aw, give us a break!!!!

April 13.....Candidates for school office are presented to the student body. Same speeches are given by the candidates, c'mon, let's get together, candidates.

April 20...Tets Kojima, Shinya Honda, Ruth Kambara elected the first student body officers of Rohwer Hi as they proceed to rule the student body with competent hands. Wise choice students.....

April 22..... Juniors trounce seniors in first soft-ball game. "Brilliant" Sat Oune and Nobu Tanimoto spark juniors to easy shut-out... After losing two games to sophs. and juniors. Seniors vow to win the next game... against the grammar school!

April 27...Rohwer engages Jerome in first inter-center basketball game as Jerome "Tigers" proceed to knock the stuffing out of Rohwer. They weren't "Tigers"!!!! They looked more like "Giraffes" to me..What do they feed you over there, Jerome?



April 28.....Knights sponsor assembly, prelude to the co-ed contest, under the capable eneeeing of Mac Mimaki. One of the better engineered assemblies of the year. Ingenious Knights.

April 30...Rohwer travels to Jerome for return match, but Rohwer is thumped more decisively. Theme song, "It Started All Over Again"

May 7-14....Co-ed Contest in full swing. Co-eds drag out the best, moth bitten dress attire.

May 8...Senior Council goes to Jerome to witness their awe-inspiring graduation exercise...Nice going, Jerome High.

May 15..Climaxing their week's campaign, Knights hold a ball for the Queen, Marion Yamamoto, and her attendants. Thanks for the swell time and the ninety-one dollars, Knights!!!!!!



May 20...Rohwer engaged Jerome in first inter-center baseball game as Rohwer sets the host in a rude 11-7 setback. "Buck" Sakurai hitting "Story book" homer is the big hero of the day. That's one for the basketball team.

June 3...With "Torchbearers" and full gown attire (made of sacks) the Nat'l Honor Society install their second set of members....as other students look on enviously.

June 16...Faculty members put on an assembly for the sake of the student body...Proving that teachers are human and.....Korny!!!!!!

June 18...Traveling down for their second game in Jerome-Rohwer sets down the "Tigers" to a humiliating 14-1 drubbing in front of their home crowd. Co-captains Joey Noma, Sammy Ichiba, and diminutive senior Samuel I. Kamibayashi lead the onslaught. Now you know how it is to lose two games straight, Jerome.

Rohwer's girl team breaks even as they lose the basketball game and come out victorious in the volleyball encounter.

June 19...M. R. Owen of the State Education Dept. makes survey of the school and after being "stumped" by the students in various

classes gladly gives "A" rating to Rohwer High.

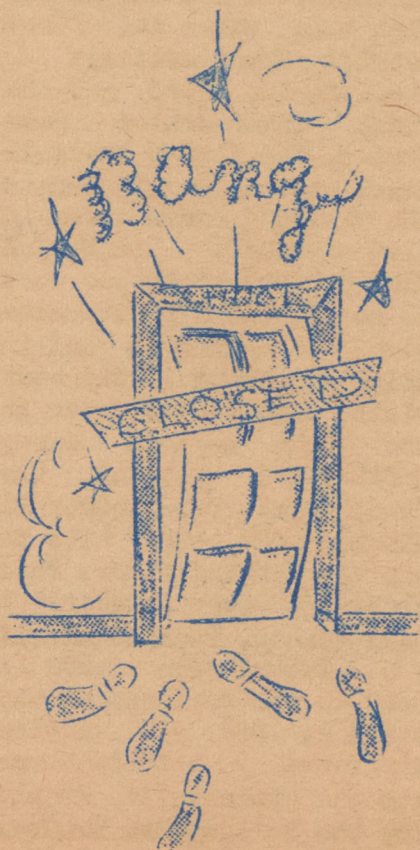
June 23...Carpenters make ventilation doors for the rooms. Gee!! it's cool, now we all can put our shirts back on!

July 5.....Commemorating the 167th year of our independence, the entire student body participated in the celebrating. Flag ceremony was held near our newly installed flagpole. One of the most awe-inspiring and spectacular spectacles of the year. Also, the Rohwer High band makes its first debut!! Huzzah!!!!!!

July 6...In the third and the final inter-center game series, the Rohwer baseball squad unceremoniously thumped the visiting Jerome team in 11-0 shutout. Masterful Hiro Okumura stole the show as he pitched a 5-hit masterpiece in 6 innings and in doing so turned in the best clutch pitch ever seen in the local season. Sammy Kamibayashi playing the final game for Rohwer High slammed out thru hits to cap the batting honor. Thus closing a very successful ball season. Fanfare please!

July 9...Second open house is held in the coolness of the evening. Did you notice the faces of both teachers and the students??? Thanks for the holiday, Mr. Bensley.

July 29...Last Day!!! Yippee!
 no more worry, no more books,
 no more teachers' dirty
 looks for...five weeks, that
 just long enough for me to
 forget the last semester's
 nightmare....But, seriously
 though, this day brought to
 an end a most successful
 and most pleasing semester
 which could have been an
 unpleasant and disagreeable
 one. Our last orchids to
 the faculty members, the
 students, and to our par-
 ents.....

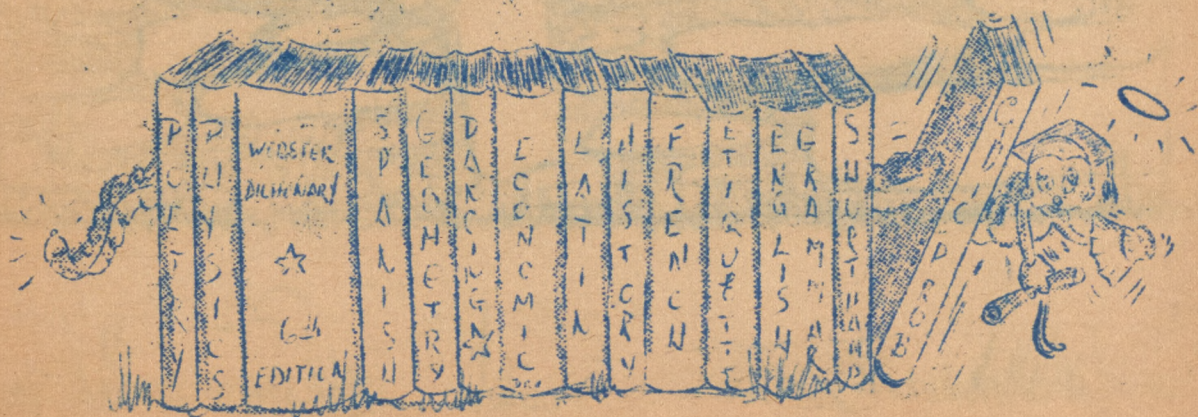


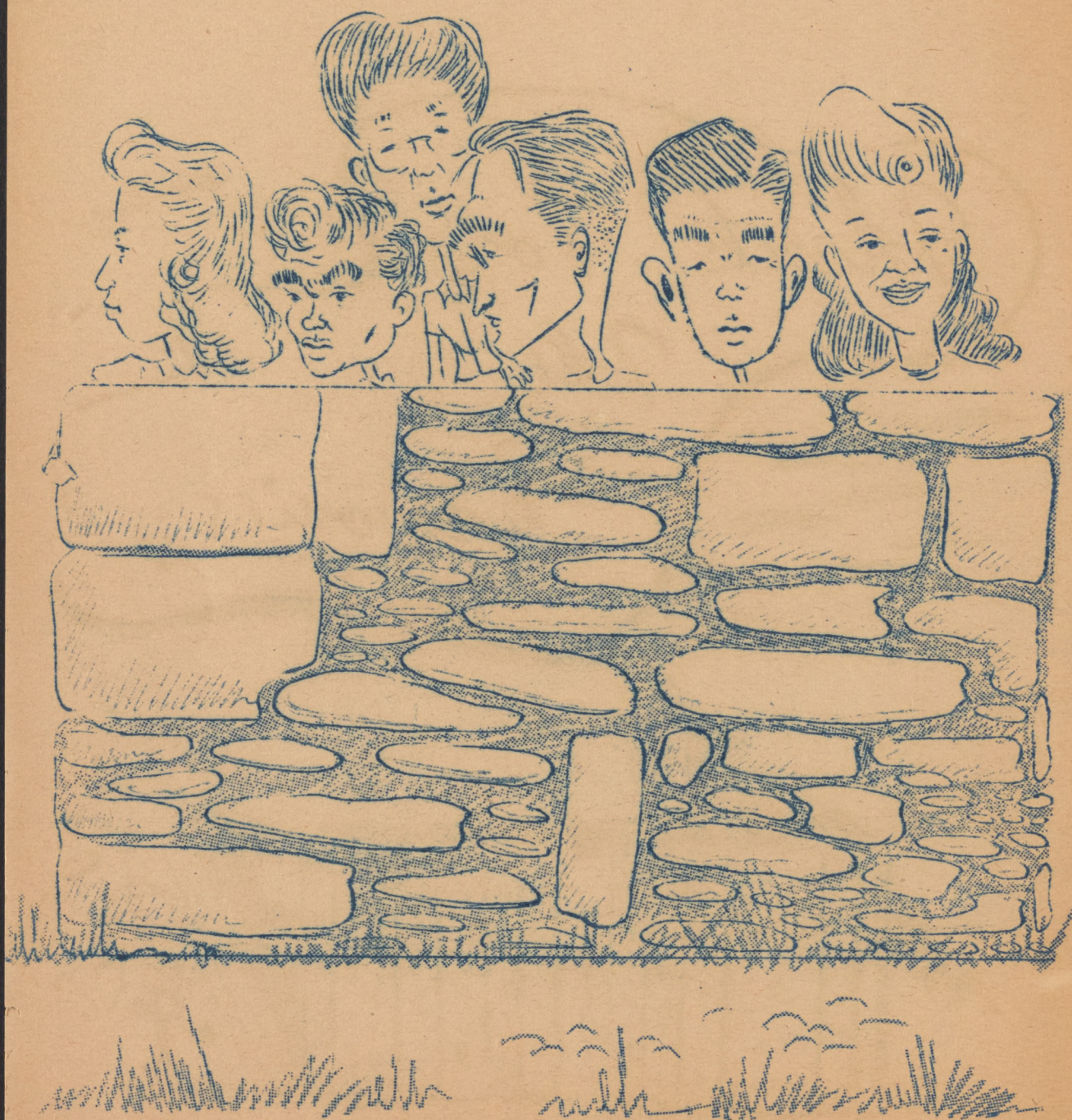
July 30...Bringing to a close
 four years in high school
 and marking one of the mile-
 stones in their lives, in
 true spectacular fashion,
 the seniors said farewell
 to Rohwer Hi.

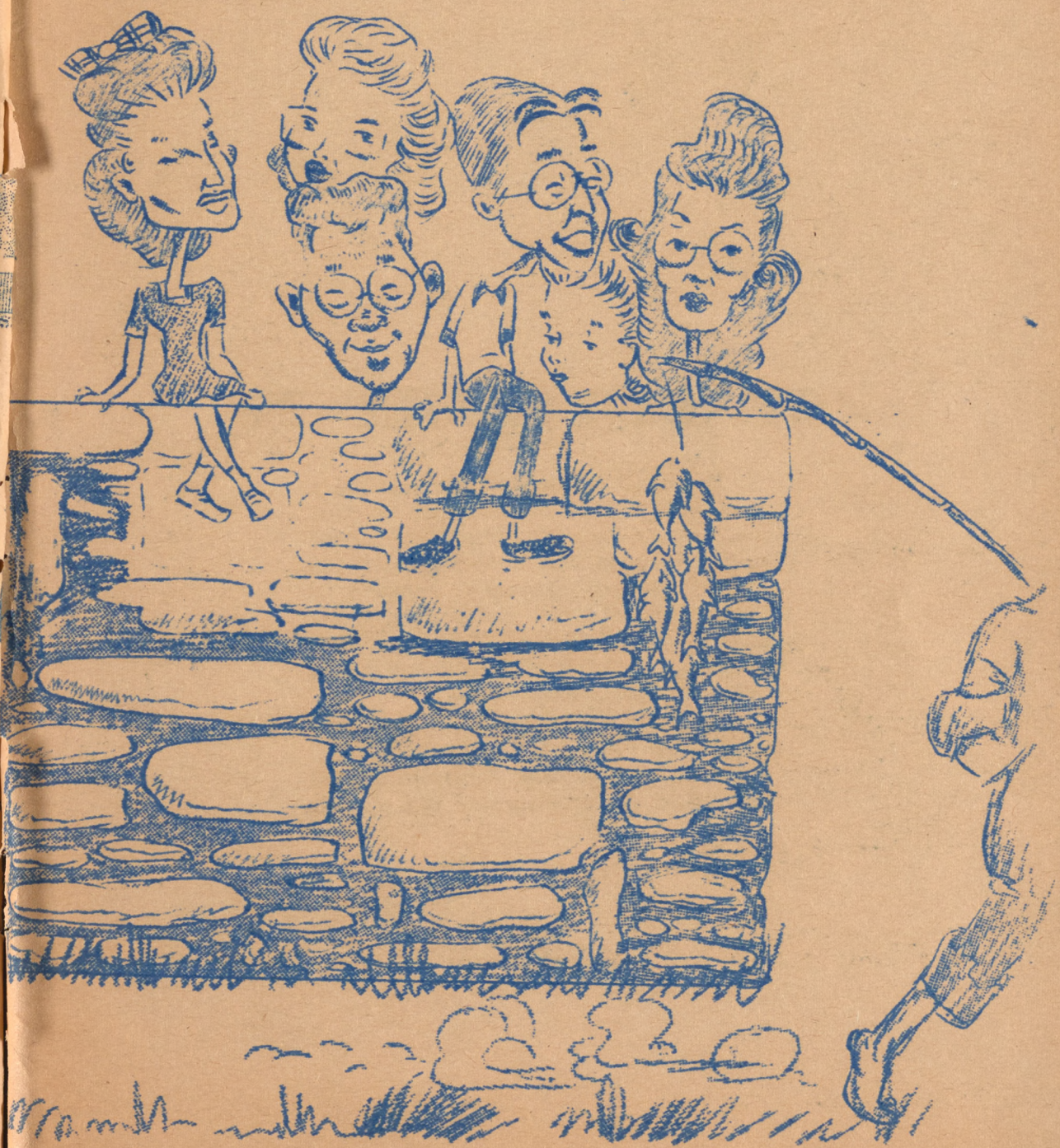


And so this reporter brings
 to a close the records and
 the highlights of Rohwer
 Hi, hoping that someday you
 might, in your years to
 come, look at Rohwer, your
 old teachers, and your old
 friends and say-----

Thanks For
The
Memories







ACKNOWLEDGMENTS

The staff wishes to acknowledge gratefully the kindness and help of Mr. Wm. E. Beasley, the high school principal, in the assembling of the materials used in this annual; of Mr. Alton Cole for the photography; and of Miss Pearl Jackson and Miss Frances Amis for their counsel and help in its preparation.

We also wish to thank the "Outpost" for printing the yearbook and for the use of the equipment; and Art Okusu for aiding our art editor.

