

M1.02

1943-1945

67/14  
C



Office for Emergency Management  
War Relocation Authority  
Relocation Center  
Personnel Chart  
May 13, 1943  
(Chart #2 of 4 charts)

HEART MOUNTAIN RELOCATION CENTER

COMMUNITY MANAGEMENT DIVISION

Assistant Project Director CAF-13 5600  
*Secretary* CAF-4 1800

*Thompson needs 57 & 67*

EDUCATION SECTION

|                                  |      |      |                    |
|----------------------------------|------|------|--------------------|
| Superintendent of Education      | P-5  | 4600 | <i>C. B.</i>       |
| Night School Director            | P-3  | 3200 | <i>Thompson</i>    |
| Sup'r. of Student Teachers       | P-2  | 2600 | <i>Lyman</i>       |
| Jr. Sr. High School Principal    | P-4  | 3800 | <i>C. B. Smith</i> |
| Asst. Jr. Sr. High School Prin.  | P-3  | 3200 | <i>Thompson</i>    |
| Vocational Adviser               | P-2  | 2600 | <i>Lyman</i>       |
| Vocational Teacher               | P-2  | 2600 | <i>(7)</i>         |
| Secondary School Teacher         | P-1  | 2000 | <i>(33) (32)</i>   |
| Librarian                        | P-1  | 2000 | <i>Thompson</i>    |
| Elementary School Principal      | P-3  | 3200 | <i>Thompson</i>    |
| Senior Elementary School Teacher | P-1  | 2000 |                    |
| Teacher                          | (2)  |      |                    |
| Elementary School Teacher        | SP-4 | 1620 | <i>(12)</i>        |

INTERNAL SECURITY SECTION

|                              |           |      |
|------------------------------|-----------|------|
| Chief of Internal Security   | CAF-11    | 3800 |
| Asst. Chief of Int. Security | (1) CAF-9 | 3200 |
| Internal Security Officer    | (3) CAF-7 | 2600 |
| Secretary                    | CAF-3     | 1620 |

WELFARE SECTION

|                     |           |      |
|---------------------|-----------|------|
| Counselor           | CAF-11    | 3800 |
| Assistant Counselor | (4) CAF-9 | 3200 |
| Jr. Counselor       | (5) CAF-7 | 2600 |
| <i>Secretary</i>    | CAF-3     | 1620 |

HEALTH SECTION

|                            |                 |                 |
|----------------------------|-----------------|-----------------|
| Principal Medical Officer  | P-6             | 5600            |
| Senior Medical Officer     | P-5             | 4600            |
| Medical Officer            | P-4             | 3800            |
| Hospital Administrator     | CAF-9           | 3200            |
| Medical Social Worker      | P-2             | 2600            |
| Dietician                  | SP-8            | 2600            |
| Sanitarian                 | SP-8            | 2600            |
| Laboratory Technician      | SP-6            | 2000            |
| <del>*Ray Technician</del> | <del>SP-6</del> | <del>2000</del> |
| Laboratory Technician      | SP-6            | 2000            |
| Chief Nurse                | SP-8            | 2600            |
| Assistant Chief Nurse      | SP-7            | 2300            |
| Head Nurse                 | (6) (7) SP-6    | 2000            |
| Sr. Staff Nurse            | (5) (8) SP-5    | 1800            |
| Jr. Staff Nurse            | SP-4            | 1620            |

COMMUNITY ACTIVITIES SECTION

|                             |       |      |
|-----------------------------|-------|------|
| Community Activities Sup'r. | CAF-9 | 3200 |
|-----------------------------|-------|------|

COMMUNITY ANALYSIS SECTION

|                   |     |      |
|-------------------|-----|------|
| Community Analyst | P-4 | 3800 |
|-------------------|-----|------|

BUSINESS ENTERPRISES SECTION

|                             |        |      |
|-----------------------------|--------|------|
| Business Enterprises Sup'r. | CAF-11 | 3800 |
|-----------------------------|--------|------|

COMMUNITY GOVERNMENT SECTION

No appointive personnel

EVACUEE PROPERTY SECTION

|                          |        |      |
|--------------------------|--------|------|
| Evacuee Property Officer | CAF-11 | 3800 |
|--------------------------|--------|------|

Number of positions: 112  
Total annual rate: \$259,320 ✓



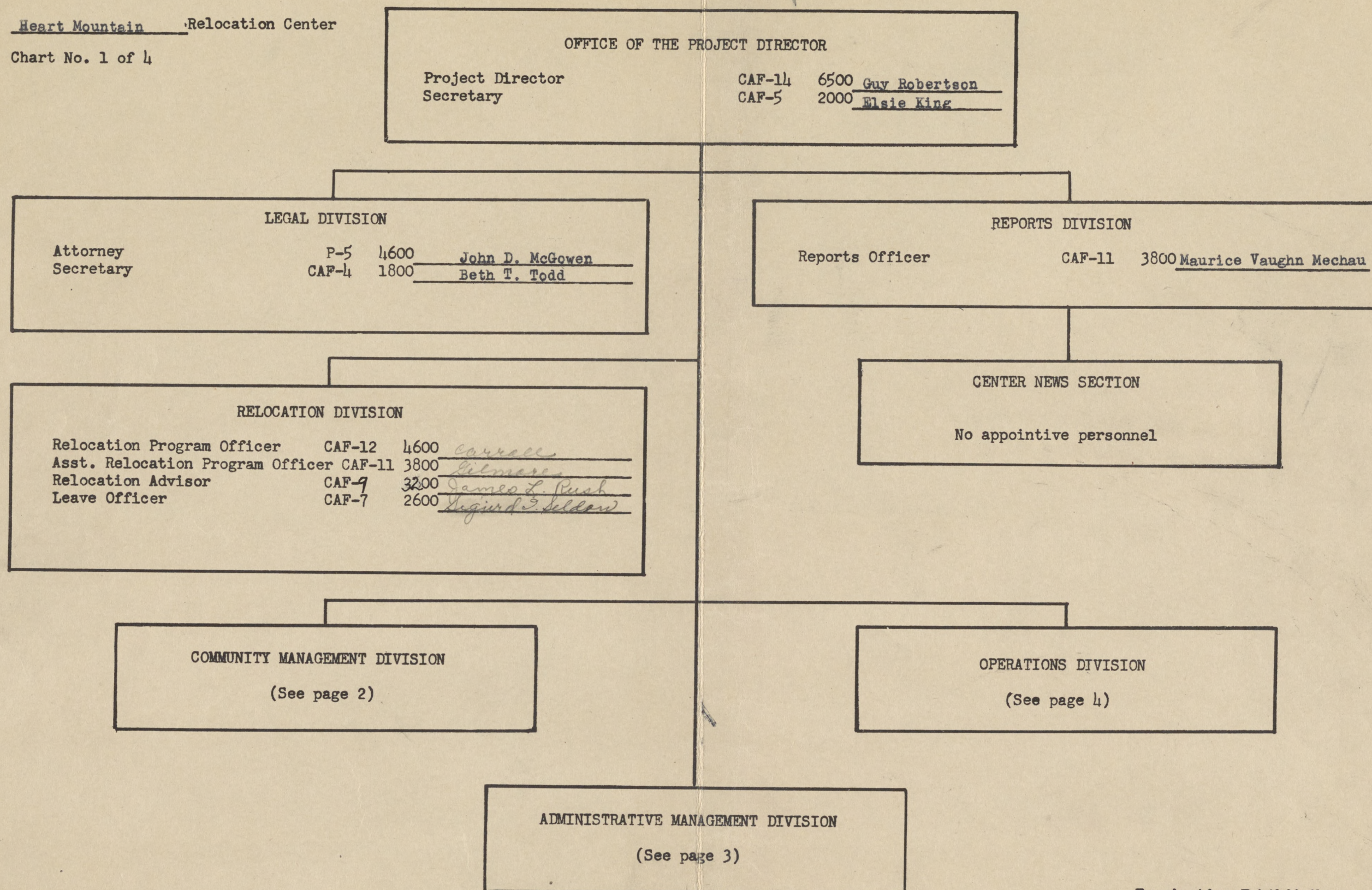
Anderson

GR

Oct. 20, 1943

Heart Mountain Relocation Center

Chart No. 1 of 4



Examination Exhibit No. \_\_\_\_\_



Office for Emergency Management  
War Relocation Authority  
Relocation Center  
Personnel Chart  
October 20, 1943  
(Chart #2 of 4 charts)

Heart Mountain Relocation Center

COMMUNITY MANAGEMENT DIVISION

|                            |        |      |                     |
|----------------------------|--------|------|---------------------|
| Assistant Project Director | CAF-13 | 5600 | Melford O. Anderson |
| Secretary                  | CAF-4  | 1800 | Dorothy N. Chambers |

INTERNAL SECURITY SECTION

|                                      |        |      |                    |
|--------------------------------------|--------|------|--------------------|
| Chief of Internal Security           | CAF-11 | 3800 | Marcus L. Campbell |
| Asst. Chief of Int. Security         | CAF-9  | 3200 | G. Weldon Brown    |
| <del>Internal Security Officer</del> | CAF-7  | 2600 | Rodger Huff        |
| Internal Security Officer            | CAF-7  | 2600 | Karl Miller        |
| Internal Security Officer            | CAF-7  | 2600 | Ealen Gorman       |
| Secretary                            | CAF-3  | 1620 | Betty Johnson      |

EDUCATION SECTION

|                                       |      |      |                              |
|---------------------------------------|------|------|------------------------------|
| Superintendent of Education           | P-5  | 4600 | C. D. Carter                 |
| Night School Director                 | P-3  | 3200 | Walter C. Schlosser          |
| Sup'r. of Student Teachers            | P-2  | 2600 | Bernadene Schunk             |
| * Jr. Sr. High School Principal       | P-4  | 3800 | John K. Corbett              |
| Vocational Advisor                    | P-2  | 2600 | C. Virginia Lynn             |
| Head Teacher (7)                      | P-2  | 2600 | (see attached list)          |
| Secondary School Teacher (32)         | P-1  | 2000 | (see attached list)          |
| Librarian                             | P-1  | 2000 | Louis Kurtz                  |
| Elementary School Principal           | P-3  | 3200 | Howard Belcher               |
| Senior Elementary School (2) Teacher  | P-1  | 2000 | Evelyn M. Dell & G. Forsythe |
| Elementary School Teacher (22)        | SP-4 | 1620 | (see attached list)          |
| * Asst. Jr. Sr. High School Principal | P-3  | 3200 | Ralph A. Forsythe            |
| Auto Mechanics Teacher                | SP-2 | 2600 |                              |
| Vocational Training Supr.             | P-3  | 3200 |                              |

COMMUNITY ACTIVITIES SECTION

|                                 |       |      |                 |
|---------------------------------|-------|------|-----------------|
| Community Activities Supervisor | CAF-9 | 3200 | Marlin T. Kurtz |
|---------------------------------|-------|------|-----------------|

BUSINESS ENTERPRISES SECTION

|                             |        |      |               |
|-----------------------------|--------|------|---------------|
| Business Enterprises Sup'r. | CAF-11 | 3800 | Scott Taggart |
|-----------------------------|--------|------|---------------|

HEALTH SECTION

|                                  |       |      |                                       |
|----------------------------------|-------|------|---------------------------------------|
| Principal Medical Officer        | P-6   | 5600 | Charles E. Irwin                      |
| Senior Medical Officer           | P-5   | 4600 | Bernard L. Robins <i>Festis</i>       |
| Medical Officer                  | P-4   | 3800 |                                       |
| Hospital Administrator           | CAF-9 | 3200 | Rowland M. Dearing <i>Inland</i>      |
| Medical Social Worker            | P-3   | 3200 | Emma E. Thomas                        |
| Dietician                        | SP-8  | 2600 | Nellie F. Wade <i>Robins</i>          |
| Sanitarian                       | SP-8  | 2600 | <i>slawenpart</i>                     |
| <del>Laboratory Technician</del> | SP-6  | 2000 |                                       |
| <del>X-Ray Technician</del>      | SP-6  | 2000 |                                       |
| Laboratory Technician            | SP-6  | 2000 |                                       |
| Chief Nurse                      | SP-8  | 2600 | Anna S. Van Kirk                      |
| Assistant Chief Nurse            | SP-7  | 2300 | (see attached list) <i>M. Nelford</i> |
| Supervising Nurse (7)            | SP-6  | 2000 | (see attached list)                   |
| Sr. Staff Nurse (8)              | SP-5  | 1800 |                                       |
| Jr. Staff Nurse ( )              | SP-4  | 1620 |                                       |

WELFARE SECTION

|                         |        |      |                  |
|-------------------------|--------|------|------------------|
| Counselor               | CAF-11 | 3800 | Virgil Payne     |
| Assistant Counselor (2) | CAF-9  | 3200 | R. Howard Embree |
| Junior Counselor (4)    | CAF-7  | 2600 |                  |
| Secretary               | CAF-3  | 1620 |                  |

COMMUNITY ANALYSIS SECTION

|                   |     |      |              |
|-------------------|-----|------|--------------|
| Community Analyst | P-4 | 3800 | Asael Hawens |
|-------------------|-----|------|--------------|

COMMUNITY GOVERNMENT SECTION

No appointive personnel

Examination Exhibit No. \_\_\_\_\_



Office for Emergency Management  
War Relocation Authority  
Relocation Center  
Personnel Chart  
October 20, 1943  
(Chart #3 of 4 charts)

Relocation Center

ADMINISTRATIVE MANAGEMENT DIVISION

Assistant Project Director  
Secretary

CAF-13 5600 V. J. Ryan (Acting)  
CAF-4 1800 Helen Kerehan

SUPPLY SECTION

Supply Officer CAF-12 4600 L. T. Main

FINANCE SECTION

Finance Officer CAF-12 4600 Boyd Larsen

MESS OPERATIONS UNIT

Chief Project Steward CAF-11 3800 Fred Haller  
Asst. Project Steward CAF-9 3200  
Storekeeper CAF-7 2600 Fred O. Saunders

PROCUREMENT UNIT

Procurement Officer CAF-11 3800 Wm C Evans  
Asst. Procurement Officer CAF-9 3200  
Jr. Procurement Clerk CAF-7 2600

POSTAL SERVICE UNIT

No appointive personnel

PERSONNEL MANAGEMENT SECTION

Personnel Officer CAF-12 4600  
Asst. Personnel Officer CAF-11 3800 W. B. Macfarlane  
Personnel Technician CAF-9 3200 Lyle Helms  
Personnel Transactions Officer CAF-7 2600 Viola Nelson

STATISTICS SECTION

Statistician P-3 3200

EVACUEE PROPERTY SECTION

Evacuee Property Officer CAF-11 3800 Harvey Burnett

BUDGET AND ACCOUNTS UNIT

Fiscal Accountant CAF-11 3800 J. M. Grace  
Asst. Fiscal Accountant CAF-9 3200  
Jr. Fiscal Accountant CAF-7 2600 W. R. Millhollin  
Fiscal Accounting Clerk CAF-5 2000  
  
Auditor CAF-9 3200 Ralph Cook  
Assistant Auditor CAF-7 2600 Willie Fryer  
Audit Clerk CAF-5 2000 Josephine Hall  
Agent Cashier CAF-6 2300

COST ACCOUNTING AND PROPERTY CONTROL UNIT

Cost Accountant CAF-11 3800  
Asst. Cost Accountant CAF-9 3200 D. F. Sump  
Jr. Cost Accountant CAF-7 2600 J. J. Graham  
Cost Accounting Clerk CAF-5 2000  
  
Property & Warehousing Officer CAF-9 3200  
Storekeeper CAF-7 2600 Howard Lewis  
Asst. Storekeeper (x) CAF-5 2000 H. D. Sturm  
Property Officer CAF-7 2600 Poland Washburn  
Property Clerk CAF-5 2000

Evacuee Property Officer CAF-11 3800

OFFICE SERVICES SECTION

Office Manager CAF-5 2000 M. Louise Bittrell  
File Clerk CAF-4 1800  
Supervising Telephone Operator CAF-3 1620 Maxine Main  
Telephone Operator (3) CAF-2 1440 Haleman  
(2) CAF-4

Statistician P-3 3200

Examination Exhibit No. \_\_\_\_\_



Office for Emergency Management  
War Relocation Authority  
Relocation Center  
Personnel Chart  
October 20, 1943  
(Chart 4 of 4 charts)

Relocation Center

OPERATIONS DIVISION

Assistant Project Director  
Secretary

CAF-13  
CAF-4

5600  
1800

D.M. Todd  
Louise Bathrell

ENGINEERING SECTION

Senior Engineer P-5 4600 H. R. Erdman

IRRIGATION, DRAINAGE & ROADS UNIT

Irr. (~~or Drainage~~) Engineer P-4 3800 R. N. Hull  
Chief Construction Foreman CPC-10 2600 Harry H. Thayer  
Senior Construction Foreman CPC-8 2200 Robert L. Bauman

CONSTRUCTION & MAINTENANCE UNIT

Construction & Maint. Sup't. CAF-11 3800 Lawrence Keiss  
Asst. Construction Sup't. CAF-9 3200  
~~Electrical Engineer~~ P-3 3200  
Utility Operations Sup't. CPC-10 2600  
~~Foreman Mechanic ( )~~ CPC-8 2200  
Carpenter Foreman (5) CPC-8 2200 See attached list  
Sr. Foreman Mechanic (3) CPC-9 2300 See attached list  
Chief Foreman Electrician CPC-10 2600 Richard Busted  
Chief Construction Foreman CPC-10 2600 Glenn E. Hill  
~~Plumbing Sup't.~~ CPC-10 2600 Rasmus P. Pedersen  
~~Senior Mechanic (5)~~ CPC-7 2080 See attached list

DESIGN & DRAFTING UNIT

Design Engineer P-3 3200 E. A. Kiehl

AGRICULTURE SECTION

Chief of Agriculture P-5 4600 Glen Hartman  
Farm Superintendent CAF-11 3800 A. S. Ingraham  
Asst. Farm Superintendent ( ) CAF-9 3200  
Foreman ( ) CPC-6 1860  
Senior Foreman CPC-8 2200 Fred J. Richards  
" " (Chief) CPC-8 2200

MOTOR TRANSPORT & MAINTENANCE SECTION

Equipment Maintenance Sup'r. CAF-9 3200 C. E. Richey  
Asst. Equip. Maint. Sup'r. CAF-7 2600  
Motor Pool Supervisor CAF-7 2600 Howard Walker  
Foreman Mechanic CPC-8 2200  
Senior Mechanic CPC-7 2040  
Junior Mechanic CPC-5 1680  
Chief Foreman Mechanic CPC-10 2600 Chester Anderson  
Sr. Foreman Mech Cr) CPC-9 2300 Harry Haynes  
James White

INDUSTRY SECTION

Foreman Mfg. Supt. CAF-11 3800  
Sawmill Supt. CPC-6 1860 E. R. Lane  
Dr. Woodstock Foreman CPC-10 2600 Geo. May  
CPC-9 2300 W. M. D. Ellis

FIRE PROTECTION SECTION

Fire Protection Officer CAF-11 3800 Glenn Rumley  
Asst. Fire Protection Officer CAF-9 3200

Examination Exhibit No. \_\_\_\_\_



as of May 6, 1944

6-1-1-19

HEART MOUNTAIN RELOCATION CENTER

COMMUNITY MANAGEMENT DIVISION  
Assistant Project Director CAF-13 5600  
Secretary CAF-4 1800

EDUCATION SECTION

Supt. of Education P-5 4600  
~~Night School Director P-3 3200~~  
Supv. of Student Teachers P-2 2600  
Jr. Sr. High School Prin. P-4 3800  
Asst. Jr. Sr. High School Prin. P-3 3200  
~~Vocational Adviser P-2 2600~~  
Head Teacher (7) (2)-V P-2 2600  
~~Acting (2) P-1 2300~~  
Secondary School Teacher (32) P-1 2000  
Librarian P-1 2000  
Elementary School Prin. P-3 3200  
~~Acting P-2 2600~~  
Sr. Elementary School Teacher (2) ~~(2)-V~~ P-1 2000  
~~Acting (2) SP-4 1620~~  
Elementary School Teacher (19) SP-4 1620  
~~Vocational Teacher SP-8 2600~~  
~~Vocational Training Supv. P-3 3200~~  
~~Adult Edu. Supv. P-3 3200~~  
~~Guidance Counselor P-2 2600~~

INTERNAL SECURITY SECTION

Chief of Internal Security CAF-11 3800  
Asst. Chief of Internal (2) CAF-9 3200  
~~Security (1) V Acting CAF-7 2600~~  
Internal Security Officer (3) CAF-7 2600  
Secretary CAF-3 1620  
WATCHMAN (temp) NTE 6-30-44 CAF-4-1500

WELFARE SECTION

Counselor CAF-11 3800  
Assistant Counselor (2) CAF-9 3200  
Junior Counselor (6) CAF-7 2600  
~~Secretary CAF-3 1620~~

HEALTH SECTION

Principal Medical Officer P-6 5600  
Senior Medical Officer P-5 4600  
Medical Officer P-4 3800  
Hospital Administrator CAF-9 3200  
Medical Social Worker P-3 3200  
Dietician SP-8 2600  
Sanitarian SP-8 2600  
Laboratory Technician SP-6 2000  
Chief Nurse SP-8 2600  
Assistant Chief Nurse SP-7 2300  
Supervising Nurse (7) SP-6 2000  
Sr. Staff Nurse (8) SP-5 1800  
Jr. Staff Nurse SP-4 1620

COMMUNITY ACTIVITIES SECTION

Community Activities Supv. ~~CAF-9~~ <sup>P-4</sup> 3800

COMMUNITY ANALYSIS SECTION

Community Analyst P-4 3800

BUSINESS ENTERPRISES SECTION

Business Enterprises Supv. CAF-11 3800

COMMUNITY GOVERNMENT SECTION

No appointive personnel

EVACUEE PROPERTY SECTION

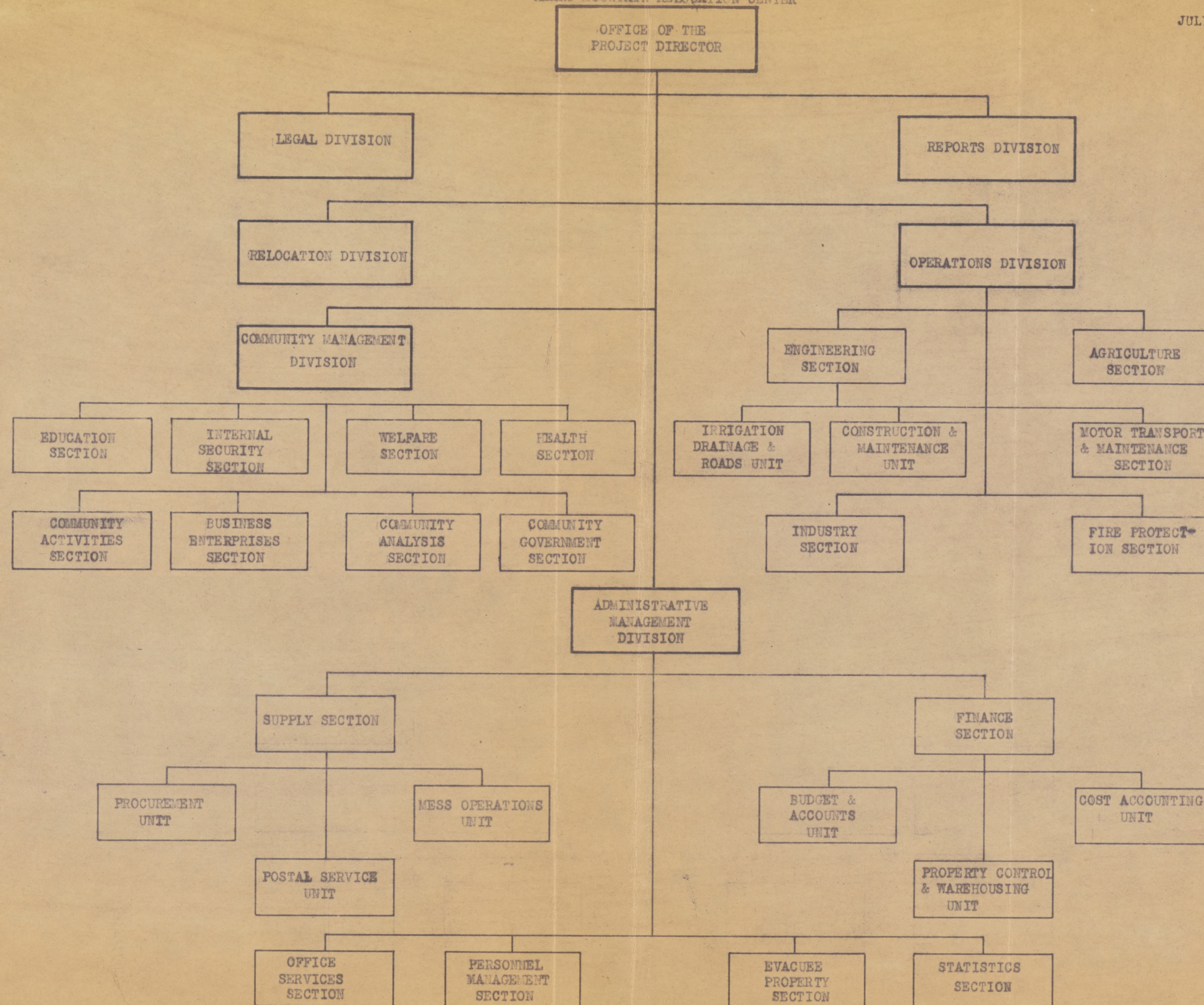
Evacuee Property Officer CAF-11 3800

Total Authorized Position 109  
Total Authorized Annual Salary \$252,720



# HEART MOUNTAIN RELOCATION CENTER

JULY 1, 1944





# HEART MOUNTAIN RELOCATION CENTER

JULY 1, 1944

(Chart #1 of 4 Charts)

## OFFICE OF PROJECT DIRECTOR

|                  |        |      |
|------------------|--------|------|
| Project Director | CAF-11 | 6500 |
| Secretary        | CAF-5  | 2000 |

## LEGAL DIVISION

|                    |       |      |
|--------------------|-------|------|
| Attorney           | P-5   | 4600 |
| Clerk-Stenographer | CAF-4 | 1800 |

## REPORTS DIVISION

|                 |        |      |
|-----------------|--------|------|
| Reports Officer | CAF-11 | 3800 |
|-----------------|--------|------|

## RELOCATION DIVISION

|                                |        |      |
|--------------------------------|--------|------|
| Relocation Program Officer     | CAF-12 | 4600 |
| Ass't. Relocation Program Off. | CAF-11 | 3800 |
| Relocation Adviser             | CAF-9  | 3200 |
| Ass't. Relocation Adviser (4)  | CAF-7  | 2600 |
| Leave Officer                  | CAF-7  | 2600 |

## COMMUNITY MANAGEMENT DIVISION

(See Chart 2)

## OPERATIONS DIVISION

(See Chart 3)

## ADMINISTRATIVE MANAGEMENT DIVISION

(See Chart 4)



## HEART MOUNTAIN RELOCATION CENTER

JULY 1, 1944  
(Chart #2 of 4 Charts)

## COMMUNITY MANAGEMENT DIVISION

|                            |        |      |
|----------------------------|--------|------|
| Assistant Project Director | CAF-13 | 5600 |
| Secretary                  | CAF-4  | 1800 |

## EDUCATION SECTION

|                                   |      |      |
|-----------------------------------|------|------|
| Superintendent of Education       | P-5  | 4600 |
| Adult Education Supervisor        | P-3  | 3200 |
| Supvr. of Student Teachers        | P-2  | 2600 |
| Librarian                         | P-1  | 2000 |
| High School Principal             | P-4  | 3800 |
| Asst. High School Principal       | P-3  | 3200 |
| Guidance Counselor                | P-2  | 2600 |
| Head Teacher (7)                  | P-2  | 2600 |
| Secondary School Teacher (32)     | P-1  | 2000 |
| Elementary School Principal       | P-3  | 3200 |
| Sr. Elementary School Teacher (2) | P-1  | 2000 |
| Elementary School Teacher (21)    | SP-4 | 1620 |
| Vocational Training Supvr.        | P-3  | 3200 |
| Vocational Teacher                | SP-8 | 2600 |

## INTERNAL SECURITY SECTION

|                               |        |      |
|-------------------------------|--------|------|
| Chief of Internal Security    | CAF-11 | 3800 |
| Asst. Chief of Int. Secur.    | CAF-9  | 3200 |
| Internal Security Officer (3) | CAF-7  | 2600 |
| Clerk-Stenographer            | CAF-3  | 1620 |

## WELFARE SECTION

|                         |        |      |
|-------------------------|--------|------|
| Counselor               | CAF-11 | 3800 |
| Assistant Counselor (2) | CAF-9  | 3200 |
| Jr. Counselor (6)       | CAF-7  | 2600 |
| Clerk-Stenographer      | CAF-3  | 1620 |

*Embley*  
*Wenberg*  
*Holmes*  
*Appelby*  
*Ehrlich*

## HEALTH SECTION

|                           |       |      |
|---------------------------|-------|------|
| Principal Medical Officer | P-6   | 5600 |
| Medical Officer           | P-4   | 3800 |
| Hospital Administrator    | CAF-9 | 3200 |
| Medical Social Worker     | P-3   | 3200 |
| Dietician                 | SP-8  | 2600 |
| Sanitarian                | SP-8  | 2600 |
| Laboratory Technician     | SP-6  | 2000 |
| Act X-Ray Technician      | SP-5  | 1800 |
| Chief Nurse               | SP-8  | 2600 |
| Assistant Chief Nurse (2) | SP-7  | 2300 |
| Supervising Nurse (7)     | SP-6  | 2000 |
| Sr. Staff Nurse (2)       | SP-5  | 1800 |

## COMMUNITY ACTIVITIES SECTION

|                             |     |      |
|-----------------------------|-----|------|
| Community Activities Supvr. | P-4 | 3800 |
|-----------------------------|-----|------|

## COMMUNITY ANALYSIS SECTION

|                   |     |      |
|-------------------|-----|------|
| Community Analyst | P-4 | 3800 |
|-------------------|-----|------|

## BUSINESS ENTERPRISES SECTION

No personnel paid by WRA

## COMMUNITY GOVERNMENT SECTION

No appointive personnel



## HEART MOUNTAIN RELOCATION CENTER

JULY 1, 1944

(Chart #3 of 4 charts)

## OPERATIONS DIVISION

|                            |        |      |
|----------------------------|--------|------|
| Assistant Project Director | CAF-13 | 5600 |
| Secretary                  | CAF-4  | 1800 |

## ENGINEERING SECTION

|                    |       |      |
|--------------------|-------|------|
| Senior Engineer    | P-5   | 4600 |
| Office Engineer    | P-3   | 3200 |
| Operations Analyst | CAF-5 | 2000 |

## AGRICULTURE SECTION

|                            |        |      |
|----------------------------|--------|------|
| Chief of Agriculture       | P-5    | 4600 |
| Farm Superintendent        | CAF-11 | 3800 |
| Ass't. Farm Superintendent | CAF-9  | 3200 |
| Foreman                    | CPC-8  | 2200 |
| Foreman                    | CPC-6  | 1860 |

IRRIGATION, DRAINAGE & ROADS  
UNIT

|                            |        |      |
|----------------------------|--------|------|
| Irri. Engineer             | P-4    | 3800 |
| Chief Foreman Construction | CPC-10 | 2600 |
| Sr. Foreman Construction   | CPC-8  | 2200 |

CONSTRUCTION & MAINTENANCE  
UNIT

|                        |        |      |
|------------------------|--------|------|
| Const. & Maint. Supt.  | CAF-11 | 3800 |
| Chief Foreman Constr.  | CPC-10 | 2600 |
| Foreman Electrician    | CPC-10 | 2600 |
| Foreman Carpenter (2)  | CPC-8  | 2200 |
| Foreman Plumber        | CPC-8  | 2200 |
| Foreman Mechanic (2)   | CPC-8  | 2200 |
| Foreman Pump Operator  | CPC-8  | 2200 |
| Foreman Construction   | CPC-8  | 2200 |
| Sr. Mechanic (4)       | CPC-7  | 2040 |
| Sawmill Superintendent | CPC-10 | 2600 |
| Woods Foreman          | CPC-9  | 2300 |

MOTOR TRANSPORT & MAINTENANCE  
SECTION

|                               |        |      |
|-------------------------------|--------|------|
| Equipment Maintenance Superv. | CAF-11 | 3800 |
| Ass't. Equip. Maint. Suerv.   | CAF-9  | 3200 |
| Motor Pool Supervisor         | CAF-9  | 3200 |
| Sr. Foreman Mechanic          | CPC-9  | 2300 |
| Foreman Blacksmith            | CPC-9  | 2300 |
| Foreman Mechanic              | CPC-8  | 2200 |
| Mechanic                      | CPC-7  | 2040 |
| Chief Foreman Mechanic        | CPC-10 | 2600 |

## INDUSTRY SECTION

## FIRE PROTECTION SECTION

|                                |        |      |
|--------------------------------|--------|------|
| Fire Protection Officer        | CAF-11 | 3800 |
| Ass't. Fire Protection Officer | CAF-9  | 3200 |



## HEART MOUNTAIN RELOCATION CENTER

JULY 1, 1944

(Chart #4 of 4 Charts)

## ADMINISTRATIVE MANAGEMENT DIVISION

|                            |        |      |
|----------------------------|--------|------|
| Assistant Project Director | CAF-13 | 5600 |
| Secretary                  | CAF-4  | 1800 |

## SUPPLY SECTION

|                |        |      |
|----------------|--------|------|
| Supply Officer | CAF-12 | 4600 |
|----------------|--------|------|

## FINANCE SECTION

|                 |        |      |
|-----------------|--------|------|
| Finance Officer | CAF-12 | 4600 |
|-----------------|--------|------|

## PROCUREMENT UNIT

|                            |         |      |
|----------------------------|---------|------|
| Procurement Officer        | DCAF-11 | 3800 |
| Ass't. Procurement Officer | CAF-9   | 3200 |
| Jr. Procurement Officer    | CAF-7   | 2600 |

## MESS OPERATIONS UNIT

|                       |        |      |
|-----------------------|--------|------|
| Chief Project Steward | CAF-11 | 3800 |
| Project Steward (2)   | CAF-9  | 3200 |
| Storekeeper           | CAF-7  | 2600 |

## BUDGET &amp; ACCOUNTS UNIT

|                          |        |      |
|--------------------------|--------|------|
| Fiscal Accountant        | CAF-11 | 3800 |
| Ass't. Fiscal Accountant | CAF-9  | 3200 |
| Jr. Fiscal Accountant    | CAF-7  | 2600 |
| Fiscal Accounting Clerk  | CAF-5  | 2000 |
| Auditor                  | CAF-9  | 3200 |
| Ass't. Auditor           | CAF-7  | 2600 |
| Audit Clerk              | CAF-5  | 2000 |
| Agent Cashier            | CAF-6  | 2300 |

## COST ACCOUNTING UNIT

|                        |        |      |
|------------------------|--------|------|
| Cost Accountant        | CAF-11 | 3800 |
| Ass't. Cost Accountant | CAF-9  | 3200 |
| Jr. Cost Accountant    | CAF-7  | 2600 |
| Cost Accounting Clerk  | CAF-5  | 2000 |

## POSTAL SERVICE UNIT

No appointive personnel

## PROPERTY CONTROL &amp; WAREHOUSING UNIT

|                             |       |      |
|-----------------------------|-------|------|
| Prop. & Warehousing Officer | CAF-9 | 3200 |
| Storekeeper                 | CAF-7 | 2600 |
| Ass't. Storekeeper (6)      | CAF-5 | 2000 |
| Property Officer            | CAF-7 | 2600 |
| Property Clerk              | CAF-5 | 2000 |

## OFFICE SERVICES SECTION

|                                |       |      |
|--------------------------------|-------|------|
| Office Manager                 | CAF-5 | 2000 |
| File Clerk                     | CAF-4 | 1800 |
| Supervising Telephone Operator | CAF-3 | 1620 |
| Telephone Operator (3)         | CAF-2 | 1440 |

## PERSONNEL MANAGEMENT SECTION

|                                |        |      |
|--------------------------------|--------|------|
| Personnel Officer              | CAF-12 | 4600 |
| Ass't. Personnel Officer       | CAF-11 | 3800 |
| Personnel Technician           | CAF-9  | 3200 |
| Personnel Transactions Officer | CAF-7  | 2600 |
| Personnel Clerk                | CAF-4  | 1800 |

## EVACUEE PROPERTY SECTION

|                          |        |      |
|--------------------------|--------|------|
| Evacuee Property Officer | CAF-11 | 3800 |
|--------------------------|--------|------|

## STATISTICS SECTION

|                |       |      |
|----------------|-------|------|
| Statistician   | P-3   | 3200 |
| Gate Clerk (2) | CAF-3 | 1620 |



EXECUTIVE OFFICE OF THE PRESIDENT

**OFFICE FOR EMERGENCY MANAGEMENT**

**OFFICE MEMORANDUM**

TO: Mr. Melford O. Anderson  
FROM: William B. Macfarlane  
SUBJECT: Organizational Chart

DATE: July 17, 1944

For your information and guidance I am attaching hereto copy of organizational chart for the first quarter of fiscal year 1945. There also is attached a copy of letter signed by John W. Clear which accompanied the original chart explaining any changes made. Each division should make a thorough study of this letter and chart and if any of their personnel or workers are effected by any changes, request for any adjustments in reclassification should be made to the Personnel Management Section.





Department of the Interior  
War Relocation Authority  
Relocation Center  
Personnel Chart  
~~October 1, 1944~~  
(Chart 1 of 4 charts)  
1-1-45

HEART MOUNTAIN

OFFICE OF PROJECT DIRECTOR

Project Director  
Secretary

CAF-14 6500  
CAF-5 2000

LEGAL DIVISION

Attorney  
Clerk-Stenographer

P-5 4600  
CAF-4 1800

REPORTS DIVISION

Reports Officer

*Clerk Stenographer*

CAF-11 3300  
CAF-4 1800

RELOCATION DIVISION

Asst. Relocation Adviser (4) CAF-7 2600  
Relocation Program Officer CAF-12 4600  
Asst. Relocation Program Officer CAF-11 3300  
Relocation Adviser CAF-9 3200  
Leave Officer CAF-7 2600  
Clerk-Stenographer CAF-4 1800

COMMUNITY MANAGEMENT DIVISION

(See Chart 2)

OPERATIONS DIVISION

(See Chart 3)

ADMINISTRATIVE MANAGEMENT DIVISION

(See Chart 4)



# HEART MOUNTAIN

Department of the Interior  
War Relocation Authority  
Relocation Center  
Personnel Chart  
~~October 1, 1944~~  
(Chart 2 of 4 charts)

1-1-45

## COMMUNITY MANAGEMENT DIVISION

Assistant Project Director CAF-13 5600  
Secretary CAF-4 1800

### EDUCATION SECTION

Superintendent of Education P-5 4600  
Adult Education Supervisor P-3 3200  
Supvr. of Student Teachers P-2 2600  
Librarian P-1 2000  
  
High School Principal P-4 3800  
Asst. High School Principal P-3 3200  
Guidance Counselor P-2 2600  
Head Teacher (5) P-2 2600  
Secondary School Teacher (31) P-1 2000  
  
Elementary School Principal P-3 3200  
Sr. Elementary School Thr (8) P-1 2000  
Elementary School Teacher (17) Sp-4 1620  
  
Vocational Training Supv. P-3 3200  
Vocational Teacher Sp-3 2600

### INTERNAL SECURITY SECTION

Chief of Internal Security CAF-11 3800  
Asst. Chief of Int. Sec. CAF-9 3200  
Internal Security Officer CAF-7 2600  
Clerk-Stenographer CAF-3 1620

### WELFARE SECTION

Counselor P-4 3800  
Assistant Counselor (2) 3 P-3 3200  
Jr. Counselor (5) 4 P-2 2600  
Clerk-Stenographer CAF-3 1620  
*Counseling aide (1) Sp-6 2000*

Embree Hansen Gomez  
Choda Appleby  
Daninbursh  
Mauk

### HEALTH SECTION

Principal Medical Officer P-6 5600  
Medical Officer P-4 3800  
Hospital Administrator CAF-9 3200  
Medical Social Worker P-3 3200  
Dietician SP-8 2600  
Sanitarian SP-8 2600  
Laboratory Technician SP-6 2000  
X-Ray Technician SP-6 2000  
  
Chief Nurse SP-8 2600  
Assistant Chief Nurse (2) SP-7 2300  
Supervising Nurse (5) SP-6 2000  
Sr. Staff Nurse (4) SP-5 1800

### COMMUNITY ACTIVITIES SECTION

Community Activities Supervisor P-4 3800

### COMMUNITY ANALYSIS SECTION

Community Analyst P-4 3800

### BUSINESS ENTERPRISES SECTION

No personnel paid by WRA

### COMMUNITY GOVERNMENT SECTION

No appointive personnel



Department of the Interior  
War Relocation Authority  
Relocation Center  
Personnel Chart  
~~October 1, 1944~~  
(Chart 3 of 4 charts)

1-1-45

HEART MOUNTAIN

OPERATIONS DIVISION

Assistant Project Director CAF-13 5600  
Secretary CAF-4 1800

ENGINEERING SECTION

Senior Engineer P-5 4600  
Office Engineer P-3 3200  
~~Operations Analyst CAF-5 2000~~

AGRICULTURE SECTION

Chief of Agriculture P-5 4600  
Farm Superintendent CAF-11 3800  
Asst. Farm Superintendent CAF-9 3200  
Foreman (2) CPC-8 2200  
Foreman CPC-6 1860

IRRIGATION, DRAINAGE & ROADS UNIT

Irrigation Engineer P-4 3800  
~~Chief Foreman Const. CPC-10 2600~~  
~~Sr. Foreman Const. CPC-8 2200~~

CONSTRUCTION & MAINTENANCE UNIT

Const. & Maint. Supt. CAF-11 3800  
Chief Foreman Const. CPC-10 2600  
Foreman Electrician CPC-10 2600  
Foreman Maintenance CPC-9 2300  
Foreman Carpenter (+) CPC-8 2200  
Foreman Plumber CPC-8 2200  
Foreman Mechanic (2) CPC-8 2200  
Foreman Pump Operator CPC-8 2200  
Foreman Construction CPC-8 2200  
~~Woods Foreman CPC-9 2300~~  
Sawmill Supt. CPC-10 2600  
Senior Mechanic (4) CPC-7 2040

MOTOR TRANSPORT & MAINTENANCE SECTION

Equipment Maint. Supervisor CAF-11 3800  
Asst. Equip. Maint. Supervisor CAF-9 3200  
Motor Pool Supervisor CAF-9 3200  
Sr. Foreman Mechanic CPC-9 2300  
Foreman Blacksmith CPC-9 2300  
Foreman Mechanic CPC-8 2200  
Mechanic CPC-7 2040  
Chief Foreman Mechanic CPC-10 2600

INDUSTRY SECTION

FIRE PROTECTION SECTION

Fire Protection Officer CAF-11 3800  
Asst. Fire Protection Officer CAF-9 3200



# HEART MOUNTAIN

Department of the Interior  
War Relocation Authority  
Relocation Center  
Personnel Chart  
~~October 1, 1944~~  
(Chart 4 of 4 charts)  
1-1-45

ADMINISTRATIVE MANAGEMENT DIVISION  
Assistant Project Director CAF-13 5600  
Secretary CAF-4 1800

## SUPPLY SECTION

Supply Officer CAF-12 4600

## PROCUREMENT UNIT

Procurement Officer CAF-11 3200  
Asst. Procurement Officer CAF-9 3200  
Jr. Procurement Officer CAF-7 2600

## PROPERTY CONTROL & WAREHOUSING UNIT

Prop. & Warehousing Officer CAF-9 3200  
Receiving & Shipping Clerk CAF-6 2300  
Storekeeper CAF-7 2600  
Asst. Storekeeper (6) CAF-5 2000  
Property Officer CAF-7 2600  
Property Clerk CAF-5 2000

## POSTAL SERVICE UNIT

No appointive personnel

## FINANCE SECTION

Finance Officer CAF-12 4600

## COST ACCOUNTING UNIT

Cost Accountant CAF-11 3800  
Asst. Cost Accountant CAF-9 3200  
Jr. Cost Accountant CAF-7 2600  
Cost Accounting Clerk CAF-5 2000

## BUDGET & ACCOUNTS UNIT

Fiscal Accountant CAF-11 3800  
Asst. Fiscal Accountant CAF-9 3200  
Jr. Fiscal Accountant CAF-7 2600  
Fiscal Accounting Clerk CAF-5 2000  
Auditor CAF-9 3200  
Asst. Auditor CAF-7 2600  
Audit Clerk CAF-5 2000  
Agent Cashier CAF-6 2300

## MESS OPERATIONS SECTION

Chief Project Section CAF-11 3800  
Project Steward (2) CAF-9 3200  
Storekeeper CAF-7 2600

## STATISTICS SECTION

Statistician P-3 3200  
Gate Clerk (2) CAF-3 1620

## PERSONNEL MANAGEMENT SECTION

Personnel Officer CAF-12 4600  
Asst. Personnel Officer CAF-11 3800  
Personnel Technician CAF-9 3200  
Personnel Transactions Officer CAF-7 2600  
Personnel Clerk CAF-4 1800

## EVACUEE PROPERTY SECTION

Evacuee Property Officer CAF-11 3800

## OFFICE SERVICE SECTION

Office Manager CAF-5 2000  
File Clerk CAF-4 1800  
Supervising Telephone Operator CAF-3 1620  
Telephone Operator (3) CAF-2 1440



H/M

Osg. chest



Fourth Quarter  
4-1-45-6-30-45

HEART MOUNTAIN RELOCATION CENTER

#1

OFFICE OF THE DIRECTOR

OFFICE OF THE PROJECT DIRECTOR

|                  |        |      |
|------------------|--------|------|
| Project Director | CAF-14 | 6500 |
| Secretary        | CAF-5  | 2000 |

LEGAL DIVISION

|                    |       |      |
|--------------------|-------|------|
| Attorney           | P-5   | 4600 |
| Clerk Stenographer | CAF-4 | 1800 |

REPORTS DIVISION

|                 |        |      |
|-----------------|--------|------|
| Reports Officer | CAF-11 | 3800 |
| Clerk Typist    | CAF-3  | 1620 |

RELOCATION DIVISION

|                                  |        |      |
|----------------------------------|--------|------|
| Relocation Program Officer       | CAF-12 | 4600 |
| Asst. Relocation Program Officer | CAF-11 | 3800 |
| Relocation Adviser (2)           | CAF-9  | 3200 |
| Asst. Relocation Adviser (8)     | CAF-7  | 2600 |
| Leave Officer                    | CAF-7  | 2600 |
| Clerk Stenographer               | CAF-4  | 1800 |
| Clerk Stenographer               | CAF-3  | 1620 |

COMMUNITY MANAGEMENT DIVISION

(See Chart 2)

EVACUEE PROPERTY SECTION

|                                |        |      |
|--------------------------------|--------|------|
| Evacuee Property Officer       | CAF-11 | 3800 |
| Asst. Evacuee Property Officer | CAF-9  | 3200 |
| Clerk Stenographer             | CAF-4  | 1800 |

OPERATIONS DIVISION

(See Chart 3)

ADMINISTRATIVE MANAGEMENT DIVISION

(See Chart 4)



Fourth Quarter  
4-1-45 to 6-30-45

#2

# HEART MOUNTAIN RELOCATION CENTER

## ADMINISTRATIVE MANAGEMENT DIVISION

|                            |        |      |
|----------------------------|--------|------|
| Assistant Project Director | CAF-13 | 5600 |
| Secretary                  | CAF-4  | 1800 |

### SUPPLY SECTION

|                    |        |      |
|--------------------|--------|------|
| Supply Officer     | CAF-12 | 4600 |
| Clerk Stenographer | CAF-3  | 1620 |

### FINANCE SECTION

|                               |        |      |
|-------------------------------|--------|------|
| Finance Officer               | CAF-12 | 4600 |
| Assistant Finance Officer (2) | CAF-11 | 3800 |
| Clerk Stenographer            | CAF-3  | 1620 |

### PROCUREMENT UNIT

|                           |        |      |
|---------------------------|--------|------|
| Procurement Officer       | CAF-11 | 3800 |
| Asst. Procurement Officer | CAF-9  | 3200 |
| Jr. Procurement Officer   | CAF-7  | 2600 |

### PROPERTY CONTROL & WAREHOUSING UNIT

|                                |        |      |
|--------------------------------|--------|------|
| Prop. & Warehousing Officer    | CAF-11 | 3800 |
| Asst. Prop. & Warehousing Off. | CAF-9  | 3200 |
| Storekeeper                    | CAF-7  | 2600 |
| Asst. Storekeeper (6)          | CAF-5  | 2000 |
| Property Officer               | CAF-7  | 2600 |
| Property Clerk (3)             | CAF-5  | 2000 |
| Receiving & Shipping Supvr.    | CAF-6  | 2300 |

### EXPENDITURE ANALYSIS UNIT

|                       |       |      |
|-----------------------|-------|------|
| Cost Accountant       | CAF-9 | 3200 |
| Cost Accounting Clerk | CAF-5 | 2000 |
| Clerk Typist          | CAF-3 | 1620 |

### EXAMINATION UNIT

|               |       |      |
|---------------|-------|------|
| Auditor       | CAF-9 | 3200 |
| Asst. Auditor | CAF-7 | 2600 |
| Audit Clerk   | CAF-5 | 2000 |
| Clerk Typist  | CAF-3 | 1620 |

### POSTAL SERVICE UNIT

No Appointed Personnel

### ACCOUNTS UNIT

|                             |       |      |
|-----------------------------|-------|------|
| Fiscal Accountant           | CAF-9 | 3200 |
| Fiscal Accountant           | CAF-7 | 2600 |
| Fiscal Accounting Clerk (2) | CAF-5 | 2000 |
| Clerk Typist (2)            | CAF-3 | 1620 |
| Agent Cashier               | CAF-6 | 2300 |

### STATISTICS SECTION

|                       |       |      |
|-----------------------|-------|------|
| Statistician          | P-3   | 3200 |
| Asst. Statistician    | P-2   | 2600 |
| Statistical Clerk (3) | CAF-5 | 2000 |
| Gate Clerk (4)        | CAF-3 | 1620 |

### PERSONNEL MANAGEMENT SECTION

|                                |        |      |
|--------------------------------|--------|------|
| Personnel Officer              | CAF-12 | 4600 |
| Personnel Technician           | CAF-9  | 3200 |
| Personnel Transactions Officer | CAF-7  | 2600 |
| Personnel Clerk                | CAF-4  | 1800 |

### MESS OPERATIONS SECTION

|                       |        |      |
|-----------------------|--------|------|
| Chief Project Steward | CAF-11 | 3800 |
| Project Steward (2)   | CAF-9  | 3200 |
| Storekeeper           | CAF-7  | 2600 |

### OFFICE SERVICES SECTION

|                                |       |      |
|--------------------------------|-------|------|
| Office Manager                 | CAF-5 | 2000 |
| File Clerk                     | CAF-4 | 1800 |
| Supervising Telephone Operator | CAF-3 | 1620 |
| Telephone Operator (3)         | CAF-2 | 1440 |



Fourth Quarter  
4-1-45-630-45

#3

HEART MOUNTAIN RELOCATION CENTER

OPERATIONS DIVISION

Assistant Project Director CAF-13 5600  
Secretary CAF-4 1800

ENGINEERING SECTION

Senior Engineer P-5 4600

AGRICULTURE SECTION

Farm Superintendent CAF-11 3800  
Foreman (2) CPC-8 2200

IRRIGATION, DRAINAGE & ROADS UNIT

Irr. (or Drainage) Engineer  
P-4 3800

CONSTRUCTION & MAINTENANCE UNIT

Const. & Maint. Supt. CAF-11 3800  
Chief Foreman Construction  
CPC-10 2600  
Foreman Electrician CPC-10 2600  
Foreman Maintenance CPC-9 2300  
Foreman Carpenter (2) CPC-8 2200  
Foreman Plumber CPC-8 2200  
Foreman Mechanic CPC-8 2200  
Foreman Pump Operator CPC-8 2200  
Sawmill Superintendent CPC-10 2600  
Sr. Mechanic (4) CPC-7 2040

MOTOR TRANSPORT & MAINTENANCE SECTION

Equipment Maintenance Supervisor CAF-11 3800  
Asst. Equip. Maint. Supervisor CAF-9 3200  
Motor Pool Supervisor CAF-9 3200  
Sr. Foreman Mechanic CPC-9 2300  
Foreman Blacksmith CPC-9 2300  
Foreman Mechanic CPC-8 2200  
Mechanic CPC-7 2040  
Chief Foreman Mechanic CPC-10 2600  
Night Dispatcher CPC-7 2040

INDUSTRY SECTION

FIRE PROTECTION SECTION

Fire Protection Officer CAF-11 3800  
Asst. Fire Protection Officer CAF-9 3200



May 31

24 Teachers ✓

13 Sec Teachers ✓

7 Elem ✓

5 Sr Elem ✓

41 to Aug 31

June 30  
1 Sup 7th Teacher ✓  
1 Counselor ✓  
1 H S Prin ✓  
1 Sec teach ✓  
1 H Teacher ✓

36

Aug 31 ✓

4 Elem

6 Sec ✓

1 H Teacher

11

~~1 Supt ✓~~

1 Librarian

1 Asst H. S. Prin

1 Hld teacher

11 Secs

1 ~~Elem Prin~~ ✓

3 Sr Elem teachers

3 Elem teachers

1 Adult ✓

1 Vac teacher ✓



Fourth Quarter  
4-1-45 to 6-30-45

#2

HEART MOUNTAIN RELOCATION CENTER

COMMUNITY MANAGEMENT DIVISION

Assistant Project Director CAF-13 5600  
Secretary CAF-4 1800

EDUCATION SECTION

|   |      |      |
|---|------|------|
| Superintendent of Education             | P-5  | 4600 |
| Supvr. of Student Teachers              | P-2  | 2600 |
| Librarian                               | P-1  | 2000 |
| High School Principal                   | P-4  | 3800 |
| Asst. High School Principal             | P-3  | 3200 |
| Guidance Counselor                      | P-2  | 2600 |
| Head Teacher (5)                        | P-2  | 2600 |
| Secondary School Teacher (31)           | P-1  | 2000 |
| Elementary School Principal             | P-3  | 3200 |
| Sr. Elementary School Teacher (8)       | P-1  | 2000 |
| Elementary School Teacher (17)          | SP-4 | 1620 |
| Adult & Vocational Education Supervisor | P-3  | 3200 |
| Vocational Teacher                      | SP-8 | 2600 |

INTERNAL SECURITY SECTION

|                               |        |      |
|-------------------------------|--------|------|
| Chief of Internal Security    | CAF-11 | 3800 |
| Asst. Chief of Int. Security  | CAF-9  | 3200 |
| Internal Security Officer (3) | CAF-7  | 2600 |
| Watchman (temp.)              | CRC-4  | 1500 |

WELFARE SECTION

|                         |       |      |
|-------------------------|-------|------|
| Counselor               | P-4   | 3800 |
| Assistant Counselor (2) | P-3   | 3200 |
| Junior Counselor (5)    | P-2   | 2600 |
| Counseling Aide         | SP-6  | 2000 |
| Clerk Stenographer      | CAF-4 | 1800 |
| Clerk Typist            | CAF-3 | 1620 |

HEALTH SECTION

|                           |       |      |
|---------------------------|-------|------|
| Principal Medical Officer | P-6   | 5600 |
| Senior Medical Officer    | P-5   | 4600 |
| Hospital Administrator    | CAF-9 | 3200 |
| Medical Social Worker     | P-3   | 3200 |
| Dietician                 | SP-8  | 2600 |
| Sanitarian                | SP-8  | 2600 |
| Laboratory Technician     | SP-6  | 2000 |
| X-Ray Technician          | SP-6  | 2000 |
| Chief Nurse               | SP-8  | 2600 |
| Assistant Chief Nurse (2) | SP-7  | 2300 |
| Supervising Nurse (5)     | SP-6  | 2000 |
| Senior Staff Nurse (4)    | SP-5  | 1800 |

COMMUNITY ACTIVITIES SECTION

|                                 |     |      |
|---------------------------------|-----|------|
| Community Activities Supervisor | P-4 | 3800 |
|---------------------------------|-----|------|

COMMUNITY ANALYSIS SECTION

|                   |     |      |
|-------------------|-----|------|
| Community Analyst | P-4 | 3800 |
|-------------------|-----|------|

BUSINESS ENTERPRISES SECTION

No appointed Personnel

COMMUNITY GOVERNMENT SECTION

No Appointed Personnel

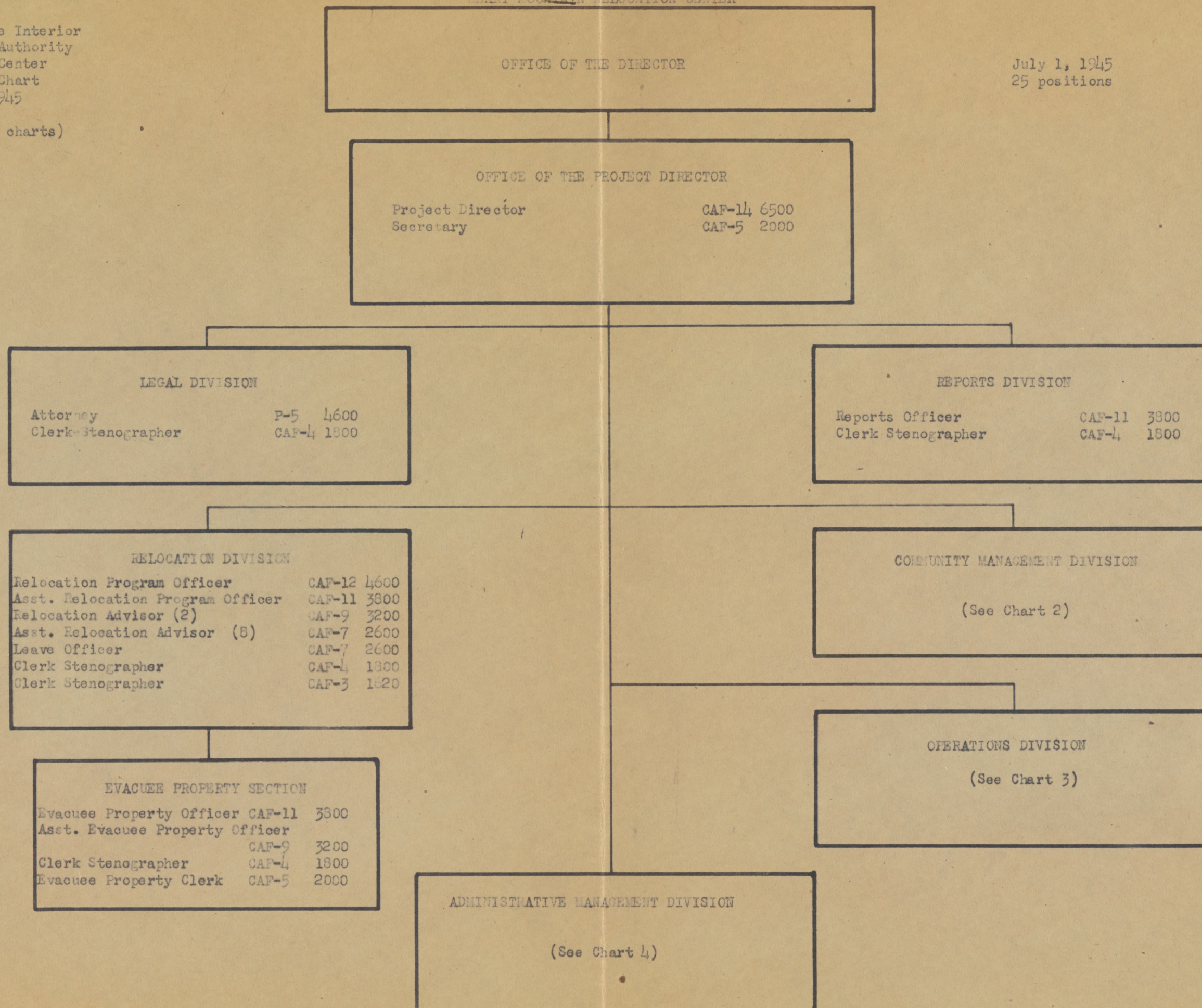


# HEART MOUNTAIN RELOCATION CENTER

Department of the Interior  
War Relocation Authority  
Relocation Center  
Personnel Chart  
July 1, 1945

(Chart #1 of 4 charts)

July 1, 1945  
25 positions





## Heart Mountain Relocation Center

## COMMUNITY MANAGEMENT DIVISION

75 positions

Department of the Interior  
War Relocation Authority  
Relocation Center  
Personnel Chart  
July 1, 1945

(Chart #2 of 4 charts)

Assistant Project Director CAF-13 5600  
Secretary CAF-4 1800

## EDUCATION SECTION

Librarian P-1 2000  
Asst. High School Principal P-3 3200  
Guidance Counselor P-2 2600  
Head Teacher (2) P-2 2600  
Secondary School Teacher (13) P-1 2000  
  
Sr. Elementary School  
Teacher (4) P-1 2000  
Elementary School Teacher (7) SP-4 1620  
  
Adult & Vocational Education P-3 3200  
Supervisor  
Vocational Teacher SP-8 2600  
Clerk Stenographer CAF-4 1800  
Clerk Typist CAF-3 1620

## INTERNAL SECURITY SECTION

Chief of Internal Security CAF-11 3800  
Asst. Chief of Int. Security CAF-9 3200  
Internal Security Officer (3) CAF-7 2600  
Guard (4) GPC-5 1680

## WELFARE SECTION

Counselor P-4 3800  
Assistant Counselor (3) P-3 3200  
Junior Counselor (5) P-2 2600  
Clerk Stenographer CAF-4 1800  
Clerk Typist CAF-3 1620  
Case Aid SP-5

## HEALTH SECTION

Principal Medical Officer P-6 5600  
Senior Medical Officer P-5 4600  
Hospital Administrator CAF-9 3200  
Medical Social Worker P-3 3200  
Dietician SP-8 2600  
Sanitarian SP-8 2600  
Laboratory Technician SP-6 2000  
X-Ray Technician SP-6 2000  
  
Chief Nurse SP-8 2600  
Assistant Chief Nurse (2) SP-7 2300  
Supervising Nurse (5) SP-6 2000  
Senior Staff Nurse (2) SP-5 1800  
Nurses Aid 1 SP-1

## COMMUNITY ACTIVITIES SECTION

Community Activities Supervisor P-4 3800

## COMMUNITY ANALYSIS SECTION

Community Analyst P-4 3800

## BUSINESS ENTERPRISES SECTION

No Appointed Personnel

## COMMUNITY GOVERNMENT SECTION

No Appointed Personnel



HEART MOUNTAIN RELOCATION CENTER

OPERATIONS DIVISION

32 positions

Assistant Project Director CAF-13 5600  
 Secretary CAF-4 1800

ENGINEERING SECTION

Senior Engineer P-5 4600  
 Clerk Typist CAF-3 120

AGRICULTURE SECTION

Foreman CPC-8 2200

IRRIGATION, DRAINAGE & ROADS UNIT

Irrigation Engineer P-4 3800

CONSTRUCTION & MAINTENANCE UNIT

Const. & Maint. Supt. CAF-11 3800  
 Chief Foreman Const. CPC-10 2600  
 Foreman Electrician CPC-10 2600  
 Foreman Maintenance CPC-9 2300  
 Foreman Carpenter (2) CPC-8 2200  
 Foreman Plumber CPC-8 2200  
 Foreman Mechanic CPC-8 2200  
 Foreman Pump Operator CPC-8 2200  
 Senior Mechanic (4) CPC-7 2040

MOTOR TRANSPORT & MAINTENANCE SECTION

Equipment Maintenance Supervisor CAF-11 3800  
 Asst. Equip. Maint. Supervisor CAF-9 3200  
 Motor Pool Supervisor CAF-9 3200  
 Sr. Foreman Mechanic CPC-9 2300  
 Foreman Blacksmith CPC-9 2300  
 Foreman Mechanic CPC-8 2200  
 Mechanic CPC-7 2040  
 Chief Foreman Mechanic CPC-10 2600  
 Night Dispatcher (2) CPC-7 2040  
 Clerk Typist CAF-3 1620

INDUSTRY SECTION

FIRE PROTECTION SECTION

Fire Protection Officer CAF-11 3800  
 Asst. Fire Protection Officer CAF-9 3200



# HEART MOUNTAIN RELOCATION CENTER

Department of the Interior  
War Relocation Authority  
Relocation Center  
Personnel Chart  
July 1, 1945  
Revised  
(Chart #4 of 4 charts)

## ADMINISTRATIVE MANAGEMENT DIVISION

Assistant Project Director CAF-13 5600  
Secretary CAF-4 1800

76 positions

### SUPPLY SECTION

Supply Officer CAF-12 4600  
Clerk Stenographer CAF-4 1800

### FINANCE SECTION

Finance Officer CAF-12 4600  
Assistant Finance Officer CAF-11 3800  
Clerk Stenographer CAF-3 1620

### PROCUREMENT UNIT

Procurement Officer CAF-11 3800  
Asst. Procurement Officer CAF-9 3200  
Jr. Procurement Officer CAF-7 2600

### PROPERTY CONTROL & WAREHOUSING UNIT

Prop. & Warehousing Officer CAF-11 3800  
Asst. Prop. & Warehousing Officer CAF-9 3200  
Storekeeper CAF-7 2600  
Asst. Storekeeper (6) CAF-5 2000  
Property Officer CAF-7 2600  
Property Clerk (3) CAF-5 2000  
Receiving & Shipping Supvr. CAF-6 2300  
Clerk Typist (3) CAF-3 1620

### EXPENDITURE ANALYSIS UNIT

Fiscal Accountant CAF-9 3200  
Fiscal Accounting Clerk CAF-5 2000  
Clerk Typist CAF-3 1620

### EXAMINATION UNIT

Fiscal Accountant CAF-9 3200  
Asst. Fiscal Accountant CAF-7 2600  
Audit Clerk CAF-5 2000  
Clerk Typist CAF-3 1620

### ACCOUNTS UNIT

Fiscal Accountant CAF-9 3200  
Asst. Fiscal Accountant CAF-7 2600  
Fiscal Accounting Clerk (2) CAF-5 2000  
Clerk Typist (2) CAF-3 1620  
Agent Cashier CAF-6 2300

### POSTAL SERVICE UNIT

No Appointed Personnel

### STATISTICS SECTION

Statistician P-3 3200  
Asst. Statistician P-2 2600  
Statistical Clerk (3) CAF-5 2000  
Gate Clerk (4) CAF-3 1620

### PERSONNEL MANAGEMENT SECTION

Personnel Officer CAF-12 4600  
Asst. Personnel Officer CAF-11 3800  
Personnel Transactions Officer - CAF-7 2600  
Personnel Clerk CAF-4 1800  
Clerk Typist (10) CAF-3 1620

### MESS OPERATIONS SECTION

Chief Project Steward CAF-11 3800  
Project Steward (2) CAF-9 3200  
Storekeeper CAF-7 2600  
Clerk CAF-4 1800  
Clerk Stenographer CAF-3 1620

### OFFICE SERVICES SECTION

Office Manager CAF-5 2000  
File Clerk CAF-4 1800  
Supervising Telephone Operator CAF-3 1620  
Telephone Operator (3) CAF-2 1440



# GENERAL PROJECT MANAGEMENT

| Authorized<br>Pos. No.     | Title                   | Grade  | Salary | Incumbent             | Remarks |
|----------------------------|-------------------------|--------|--------|-----------------------|---------|
| Office of Project Director |                         |        |        |                       |         |
| U1B14.1                    | Project Director        | CAF-14 | 16500  | Guy Robertson         |         |
| U1B5.1                     | Secretary               | CAF-5  | 2000   | Elaie L. King (Mrs.)  |         |
| Legal Division             |                         |        |        |                       |         |
| U1a45.1                    | Attorney                | P-5    | 1600   | John D. McGowan       |         |
| U1aB3.1                    | Secretary               | CAF-3  | 1620   | Beth T. Snow (Mrs.)   |         |
| Reports Division           |                         |        |        |                       |         |
| U1bB11.1                   | Reports Officer         | CAF-11 | 3800   | Maurice V. Machou     |         |
| Employment Division        |                         |        |        |                       |         |
| U1cB12.1                   | Employment Officer      | CAF-12 | 1600   | William J. Carroll    |         |
| U1cB 9.1                   | Placement Officer       | CAF-9  | 3200   | William B. Macfarlane |         |
| U1cB9.2                    | Leave Officer           | CAF-7  | 3200   | Claud C. Gilmore      |         |
| U1cB7.1                    | Asst. Placement Officer | CAF-7  | 2600   | Lyle W. Holm          |         |

Total Authorized Positions 9  
Total Authorized Annual Salary \$32,120



COMMUNITY MANAGEMENT DIVISION

| Authorized<br>Pos. No.               | Title                        | Grade  | Salary | Incumbent                       | Remarks                      |
|--------------------------------------|------------------------------|--------|--------|---------------------------------|------------------------------|
| Office of Assistant Project Director |                              |        |        |                                 |                              |
| U2B13.1                              | Assistant Project Director   | CAF-13 | \$5600 | Melford O. Anderson             |                              |
| U2B4.1                               | Secretary                    | CAF-4  | 1800   | Dorothy N. Chambers (Mrs.)      |                              |
| Internal Security Section            |                              |        |        | Rodger B. Huff                  | (Acting-U2aB7.3-CAF-7,-2600) |
| U2aB11.1                             | Chief of Internal Security   | CAF-11 | 3800   | Marcus L. Campbell              |                              |
| U2aB9.1                              | Asst. Chief of Internal Sec. | CAF-9  | 3200   |                                 |                              |
| U2aB9.2                              | Asst. Chief of Internal Sec. | CAF-9  | 3200   | G. Nelson Brown R. Wilkins      |                              |
| U2aB7.1                              | Internal Security Officer    | CAF-7  | 2600   | Karl W. Miller H. Kinkeade      |                              |
| U2aB7.2                              | Internal Security Officer    | CAF-7  | 2600   | C. B. McFarland                 |                              |
| U2aB3.1                              | Secretary                    | CAF-3  | 1620   | Betty Johnson                   |                              |
| Health Section                       |                              |        |        |                                 |                              |
| U2bA6.1                              | Prin. Medical Officer        | P-6    | 5600   | Charles E. Irwin                |                              |
| U2bA5.1                              | Sr. Medical Officer          | P-5    | 4600   | Hans J. Feitso                  |                              |
| U2bA4.1                              | Medical Officer              | P-4    | 3800   |                                 |                              |
| U2bB9.1                              | Hospital Administrator       | CAF-9  | 3200   | Rowland M. Dearing Esel Gachard |                              |
| U2cA2.1                              | Medical Social Worker        | P-2    | 2600   | Emma E. Thomas                  |                              |
| U2bC8.1                              | Chief Nurse                  | SP-8   | 2600   | Anna S. Van Kirk                |                              |
| U2bC8.2                              | Dietician                    | SP-8   | 2600   | Nellie F. Wade                  |                              |
| U2bC8.3                              | Sanitarian                   | SP-8   | 2600   | H. C. Slavenport                |                              |
| U2bC7.1                              | Asst. Chief Nurse            | SP-7   | 2300   | Margaret W. Deford              |                              |
| U2bC6.1                              | Supervising Nurse            | SP-6   | 2000   | Margaret B. Harvey (Mrs.)       |                              |
| U2bC6.2                              | Supervising Nurse            | SP-6   | 2000   | Velma B. Kessel (Mrs.)          |                              |
| U2bC6.3                              | Supervising Nurse            | SP-6   | 2000   | Elva P. Lawson (Mrs.)           |                              |
| U2bC6.4                              | Supervising Nurse            | SP-6   | 2000   | Lula B. Leonard                 |                              |
| U2bC6.5                              | Supervising Nurse            | SP-6-  | 2000   | Margaret Welford                |                              |
| U2bC6.6                              | Supervising Nurse            | SP-6   | 2000   | Eda Stich                       |                              |
| U2bC6.7                              | Supervising Nurse            | SP-6   | 2000   | Rebecca Grunsrud                |                              |
| U2bC6.8                              | Laboratory Technician        | SP-6   | 2000   |                                 |                              |
| U2bC5.1                              | Sr. Staff Nurse              | SP-5   | 1800   |                                 |                              |
| U2bC5.2                              | Sr. Staff Nurse              | SP-5   | 1800   | Rebecca L. Grunsrud             |                              |
| U2bC5.3                              | Sr. Staff Nurse              | SP-5   | 1800   | Ruth W. Jones                   |                              |
| U2bC5.4                              | Sr. Staff Nurse              | SP-5   | 1800   | Eda W. Stich                    |                              |



COMMUNITY MANAGEMENT DIVISION (2)

| Authorized<br>Pos. No. | Title                          | Grade | Salary | Incumbent                            | Remarks                     |
|------------------------|--------------------------------|-------|--------|--------------------------------------|-----------------------------|
| U2bC5.5                | Sr. Staff Nurse                | SP-5  | \$1800 |                                      |                             |
| U2bC5.6                | Sr. Staff Nurse                | SP-5  | 1800   |                                      |                             |
| U2bC5.7                | Sr. Staff Nurse                | SP-5  | 1800   |                                      |                             |
| U2bC5.8                | Sr. Staff Nurse                | SP-5  | 1800   |                                      |                             |
| U2bC4.7                | Jr. Staff Nurse                | SP-4  | 1620   |                                      |                             |
| Education Section      |                                |       |        |                                      |                             |
| U2cA5.1                | Superintendent of Education    | P-5   | 4600   | <i>C. D. Carter</i>                  |                             |
| U2cA4.1                | Jr.-Sr. High School Prin.      | P-4   | 3800   | John K. Corbett                      |                             |
| U2cA3.1                | Night School Director          | P-3   | 3200   | <i>H. C. Schlosser</i>               |                             |
| U2cA3.2                | Asst. Jr.-Sr. High Sch. Prin.  | P-3   | 3200   | Ralph A. Forsythe                    |                             |
| U2cA3.3                | Elementary School Principal    | P-3   | 3200   | <i>H. D. Bugbee</i>                  |                             |
| U2cA2.1                | Vocational Adviser             | P-2   | 2600   | C. Virginia Lynn                     |                             |
| U2cA2.2                | Supervisor of Student Teachers | P-2   | 2600   | Bernadene K. Schunk                  |                             |
| U2cA2.3                | Head Teacher                   | P-2   | 2600   |                                      |                             |
| U2cA2.4                | Head Teacher                   | P-2   | 2600   | Thomas R. Thompson                   |                             |
| U2cA2.5                | Head Teacher                   | P-2   | 2600   | Robert W. Graham                     | (Acting-U2cA1.36-P-1.-2300) |
| U2cA2.6                | Head Teacher                   | P-2   | 2600   | John Balamonte                       | (Acting-U2cA1.37-P-1.-2300) |
| U2cA2.7                | Head Teacher                   | P-2   | 2600   |                                      |                             |
| U2cA2.8                | Head Teacher                   | P-2   | 2600   |                                      |                             |
| U2cA2.9                | Head Teacher                   | P-2   | 2600   |                                      |                             |
| U2cA1.1                | Librarian                      | P-1   | 2000   |                                      |                             |
| U2cA1.2                | Sr. Elem. School Teacher       | P-1   | 2000   |                                      |                             |
| U2cA1.3                | Sr. Elem. School Teacher       | P-1   | 2000   | <i>Genevieve Forsythe</i>            |                             |
| U2cA1.4                | Secondary School Teacher       | P-1   | 2000   | Dan F. Bellinger                     |                             |
| U2cA1.5                | Secondary School Teacher       | P-1   | 2000   | Phyllis F. Cowger (Mrs.)             |                             |
| U2cA1.6                | Secondary School Teacher       | P-1   | 2000   | James W. Cladden, Jr.                |                             |
| U2cA1.7                | Secondary School Teacher       | P-1   | 2000   | Ernest J. Clark                      |                             |
| U2cA1.8                | Secondary School Teacher       | P-1   | 2000   | <del>Martha A. Collieran</del>       |                             |
| U2cA1.9                | Secondary School Teacher       | P-1   | 2000   | <del>Evelyn E. Thompson (Mrs.)</del> |                             |
| U2cA1.10               | Secondary School Teacher       | P-1   | 2000   |                                      |                             |
| U2cA1.11               | Secondary School Teacher       | P-1   | 2000   | Thelma E. Bugbee (Mrs.)              |                             |
| U2cA1.12               | Secondary School Teacher       | P-1   | 2000   | Opal M. Carter (Mrs.)                |                             |



COMMUNITY MANAGEMENT DIVISION (3)

| Authorized<br>Pos. No. | Title                     | Grade | Salary | Incumbent                     | Remarks |
|------------------------|---------------------------|-------|--------|-------------------------------|---------|
| U2cA1.13               | Secondary School Teacher  | P-1   | 2000   | Russell W. Chambers           |         |
| U2cA1.14               | Secondary School Teacher  | P-1   | 2000   | Ruth B. Hittiner (Mrs.)       |         |
| U2cA1.15               | Secondary School Teacher  | P-1   | 2000   | Glyde D. Clausen              |         |
| U2cA1.16               | Secondary School Teacher  | P-1   | 2000   | Williamette B. Clausen (Mrs.) |         |
| U2cA1.17               | Secondary School Teacher  | P-1-  | 2000   | Clarissa J. Corbett (Mrs.)    |         |
| U2cA1.18               | Secondary School Teacher  | P-1   | 2000   | Clifford B. Cowger            |         |
| U2cA1.19               | Secondary School Teacher  | P-1   | 2000   | Richard Saterine              |         |
| U2cA1.20               | Secondary School Teacher  | P-1   | 2000   | Elizabeth F. Gladden (Mrs.)   |         |
| U2cA1.21               | Secondary School Teacher  | P-1   | 2000   | W. Joy Krueger                |         |
| U2cA1.22               | Secondary School Teacher  | P-1   | 2000   | Lois E. Kurtz (Mrs.)          |         |
| U2cA1.23               | Secondary School Teacher  | P-1   | 2000   | Helen M. Thompson             |         |
| U2cA1.24               | Secondary School Teacher  | P-1   | 2000   | Edna L. Hinen                 |         |
| U2cA1.25               | Secondary School Teacher  | P-1   | 2000   | Ruth L. Myers                 |         |
| U2cA1.26               | Secondary School Teacher  | P-1   | 2000   | Eva E. Sutherland             |         |
| U2cA1.27               | Secondary School Teacher  | P-1   | 2000   | Lois C. Runden (Mrs.)         |         |
| U2cA1.28               | Secondary School Teacher  | P-1   | 2000   | Lynn D. Sanderson             |         |
| U2cA1.29               | Secondary School Teacher  | P-1   | 2000   | Lucille M. Hicks              |         |
| U2cA1.30               | Secondary School Teacher  | P-1   | 2000   | Marjorie E. Lewis             |         |
| U2cA1.31               | Secondary School Teacher  | P-1   | 2000   | Aurelia G. Valley             |         |
| U2cA1.32               | Secondary School Teacher  | P-1   | 2000   | Irene H. Dams                 |         |
| U2cA1.33               | Secondary School Teacher  | P-1   | 2000   | Mary C. Pagano                |         |
| U2cA1.34               | Secondary School Teacher  | P-1   | 2000   |                               |         |
| U2cA1.35               | Secondary School Teacher  | P-1   | 2000   | C. Madeleine Sudderth         |         |
| U2cCh.1                | Elementary School Teacher | SP-h  | 1620   | Faye E. Clark (Mrs.)          |         |
| U2cCh.2                | Elementary School Teacher | SP-h  | 1620   | Dorothy H. Sanderson (Mrs.)   |         |
| U2cCh.3                | Elementary School Teacher | SP-h  | 1620   | Eleanor Jackson               |         |
| U2cCh.4                | Elementary School Teacher | SP-h  | 1620   | Leota B. Crane                |         |
| U2cCh.5                | Elementary School Teacher | SP-h  | 1620   | Edna L. Gahman (Mrs.)         |         |
| U2cCh.6                | Elementary School Teacher | SP-h  | 1620   | Stella Neider                 |         |
| U2cCh.7                | Elementary School Teacher | SP-h  | 1620   | Eula M. Schneider (Mrs.)      |         |
| U2cCh.8                | Elementary School Teacher | SP-h  | 1620   | Dorothy A. Berner             |         |
| U2cCh.9                | Elementary School Teacher | SP-h  | 1620   | W. Charlene Shaklee           |         |
| U2cCh.10               | Elementary School Teacher | SP-h  | 1620   | Audra F. Hursh (Mrs.)         |         |



COMMUNITY MANAGEMENT DIVISION (h)

| Authorized<br>Pos. No.              | Title                           | Grade  | Salary | Incumbent          | Remarks                         |
|-------------------------------------|---------------------------------|--------|--------|--------------------|---------------------------------|
| U2cCh.11                            | Elementary School Teacher       | SP-4   | 1620   | Laverna G. Hutt    |                                 |
| U2cCh.12                            | Elementary School Teacher       | SP-4   | 1620   | Ivan L. Jennings   |                                 |
| U2cCh.13                            | Elementary School Teacher       | SP-4   | 1620   | Marjorie E. Jones  |                                 |
| U2cCh.14                            | Elementary School Teacher       | SP-4   | 1620   |                    |                                 |
| U2cCh.15                            | Elementary School Teacher       | SP-4   | 1620   | E. Virginia Dillon |                                 |
| U2cCh.16                            | Elementary School Teacher       | SP-4   | 1620   | Alberta R. Kassing |                                 |
| U2cCh.17                            | Elementary School Teacher       | SP-4   | 1620   | Ella J. Randall    |                                 |
| U2cCh.18                            | Elementary School Teacher       | SP-4   | 1620   | Lois W. Vonburg    |                                 |
| U2cCh.19                            | Elementary School Teacher       | SP-4   | 1620   | E. Joy Kattner     |                                 |
| <b>Welfare Section</b>              |                                 |        |        |                    |                                 |
| U2dB11.1                            | Counselor                       | CAF-11 | 3800   | Virgil Payne       |                                 |
| U2dB9.1                             | Asst. Counselor                 | CAF-9  | 3200   | R. Howard Embree   |                                 |
| U2dB7.1                             | Junior Counselor                | CAF-7  | 2600   |                    |                                 |
| <b>Community Analysis Section</b>   |                                 |        |        |                    |                                 |
| U2cA.1                              | Community Analyst               | P-4    | 3800   |                    |                                 |
| <b>Community Activities Section</b> |                                 |        |        |                    |                                 |
| U2fB9.1                             | Community Activities Supv.      | CAF-9  | 3200   | Marlin T. Kurtz    |                                 |
| <b>Business Enterprises Section</b> |                                 |        |        |                    |                                 |
| U2cB11.1                            | Business Enterprises Supervisor | CAF-11 | 3800   | Scott Taggart      |                                 |
| <b>Evacuee Property Section</b>     |                                 |        |        |                    |                                 |
| U2hB11.1                            | Evacuee Property Officer        | CAF-11 | 3800   | Harvey Burnett     | <i>transferred to Adm. Mgmt</i> |

Total Authorized Positions    109  
 Total Authorized Annual Salary    \$252,720



OPERATIONS DIVISION

| Authorized<br>Pos. No.               | Title                             | Grade  | Salary | Incumbent                 | Remarks             |
|--------------------------------------|-----------------------------------|--------|--------|---------------------------|---------------------|
| Office of Assistant Project Director |                                   |        |        |                           |                     |
| U3B13.1                              | Asst. Project Director            | CAF-13 | 5600   | Douglas M. Todd           |                     |
| U3B4.1                               | Secretary                         | CAF-4  | 1800   | M. Louise Bottrell (Mrs.) |                     |
| Agriculture Section                  |                                   |        |        |                           |                     |
| U3aA5.1                              | Chief of Agriculture              | P-5    | 4600   | Glen Hartman              |                     |
| U3aB11.1                             | Farm Superintendent               | CAF-11 | 3800   | Alden S. Ingraham         |                     |
| U3aB9.1                              | Asst. Farm Superintendent         | CAF-9  | 3200   | John K. Black             |                     |
| U3aD8.1                              | Sr. Foreman                       | CPC-8  | 2200   | Fred J. Richard           |                     |
|                                      | Sr. Foreman - 6 mo.               | CPC-8  | 2200   | Lincoln A. Morrison       |                     |
| Industry Section                     |                                   |        |        |                           |                     |
| U3bB11.1                             | Manufacturing Superintendent      | CAF-11 | 3800   | Everett R. Lane           |                     |
| U3bD10.1                             | Sewall Superintendent             | CPC-10 | 2600   | George E. Mix             |                     |
| U3bD9.1                              | Woods Foreman                     | CPC-9  | 2300   | Glen C. Fish              |                     |
| U3bD8.1                              | Carpenter Foreman                 | CPC-8  | 2200   | Dave Matson               |                     |
| Engineering Section                  |                                   |        |        |                           |                     |
| U3cA5.1                              | Senior Engineer                   | P-5    | 4600   | Leon C. Goodrich          | (Acting-U3cA4.2)    |
| Irrigation, Drainage & Roads Unit    |                                   |        |        |                           |                     |
| U3cA4.1                              | Irrigation (or Drainage) Engr.    | P-4    | 3800   | Richard N. Hull           |                     |
| U3cD10.1                             | Chief Construction Foreman        | CPC-10 | 2600   | Harry W. Thayer           |                     |
| U3cD8.1                              | Senior Construction Foreman       | CPC-8  | 2200   | Robert L. Bauman          |                     |
| Construction & Maintenance Unit      |                                   |        |        |                           |                     |
| U3cB11.1                             | Construction & Maintenance Supt.  | CAF-11 | 3800   | Lawrence R. Keiss         | (Acting - U3cB9.2)  |
| U3cB9.1                              | Asst. Const. & Maint. Supt.       | CAF-9  | 3200   | Glenn E. Hill             | (Acting - U3cB7.1)  |
| U3cD10.2                             | Sr. Foreman Light & Power         | CPC-10 | 2600   | Richard Busted            |                     |
| U3cD10.3                             | Utility Operations Supt.          | CPC-10 | 2600   |                           |                     |
| U3cD9.1                              | Sr. Foreman Mechanic (Hvy. Equip) | CPC-9  | 2300   | Francis R. Acton          | (Acting - U3cD8.8)  |
| U3cD9.2                              | Sr. Foreman Mechanic              | CPC-9  | 2300   | Alfred W. Pierce          | (Acting - U3cD8.9)  |
| U3cD9.3                              | Sr. Foreman Mechanic              | CPC-9  | 2300   | Carl W. Acton             | (Acting - U3cD8.10) |
| U3cD8.2                              | Carpenter Foreman                 | CPC-8  | 2200   | Carl J. Johansson         |                     |
| U3cD8.3                              | Carpenter Foreman                 | CPC-8  | 2200   | Clinton R. Jones          |                     |
| U3cD8.4                              | Carpenter Foreman                 | CPC-8  | 2200   | Paul K. Pond              |                     |



OPERATIONS DIVISION (2)

| Authorized<br>Pos. No.                | Title                       | Grade  | Salary | Incumbent                | Remarks           |
|---------------------------------------|-----------------------------|--------|--------|--------------------------|-------------------|
| U3eD8.5                               | Carpenter Foreman           | CPC-8  | 2200   | Wain R. Macleane         |                   |
| U3eD8.6                               | Carpenter Foreman           | CPC-8  | 2200   |                          |                   |
| U3eD8.7                               | Foreman Mechanic            | CPC-8  | 2200   | Rasmus P. Pedersen-2600  |                   |
| U3eD7.1                               | Sr. Mechanic                | CPC-7  | 2040   | Frank F. Conlon          |                   |
| U3eD7.2                               | Sr. Mechanic                | CPC-7  | 2040   | James E. Ratliff, Sr.    |                   |
| U3eD7.3                               | Sr. Mechanic                | CPC-7  | 2040   | Harold G. Kirkpatrick    |                   |
| U3eD7.4                               | Sr. Mechanic                | CPC-7  | 2040   | Charles C. deMaris       |                   |
| U3eD7.5                               | Sr. Mechanic                | CPC-7  | 2040   | Loyal S. Smith           |                   |
| Design & Drafting Unit                |                             |        |        |                          |                   |
| U3eA9.1                               | Design Engineer             | P-9    | 3200   |                          |                   |
| Fire Protection Section               |                             |        |        |                          |                   |
| U3eB11.1                              | Fire Protection Officer     | CAF-11 | 3800   | Glenn B. Runley          |                   |
| U3eB9.1                               | Asst. Fire Protection Off.  | CAF-9  | 3200   | Walter B. Phillips       |                   |
| Motor Transport & Maintenance Section |                             |        |        |                          |                   |
| U3eB9.1                               | Equip. & Maint. Supv.       | CAF-9  | 3200   | Charles E. Richey - 3500 |                   |
| U3eB7.1                               | Asst. Equip. & Maint. Supv. | CAF-7  | 2600   | Elbern F. Linderman      |                   |
| U3eB7.2                               | Motor Pool Supervisor       | CAF-7  | 2600   | Howard W. Walker         | (U3eD7.1 - CPC-7) |
| U3eD10.1                              | Chief Garage Foreman        | CPC-10 | 2600   | Chester E. Anderson      |                   |
| U3eD9.1                               | Sr. Foreman Mechanic        | CPC-9  | 2300   | Harry G. Hayner          |                   |
| U3eD9.2                               | Sr. Foreman Mechanic        | CPC-9  | 2300   | James H. White           |                   |

Total Authorized Positions 41

Total Authorized Annual Salary \$113,600- . . . . . (1 Temp. (6mos.)-2200)



ADMINISTRATIVE MANAGEMENT DIVISION

| Authorized<br>Pos. No.                    | Title                     | Grade  | Salary | Incumbent              | Remarks                         |
|---|---------------------------|--------|--------|------------------------|---------------------------------|
| Office of Assistant Director              |                           |        |        |                        |                                 |
| U <sub>h</sub> B13.1                      | Asst. Project Director    | CAF-13 | 5600   |                        |                                 |
| U <sub>h</sub> B4.1                       | Secretary                 | CAF-4  | 1800   |                        |                                 |
| Supply Section                            |                           |        |        |                        |                                 |
| U <sub>h</sub> B12.1                      | Supply Officer            | CAF-12 | 4600   | Lundgren T. Main       |                                 |
| Procurement Unit                          |                           |        |        |                        |                                 |
| U <sub>h</sub> B11.2                      | Procurement Officer       | CAF-11 | 3800   | William C. Evans       |                                 |
| U <sub>h</sub> B9.2                       | Asst. Procurement Officer | CAF-9  | 3200   | Cameron Christie       | (Acting - U <sub>h</sub> B7.2)  |
| U <sub>h</sub> B5.2                       | Sr. Procurement Clerk     | CAF-5  | 2000   |                        |                                 |
| Mess Management Unit                      |                           |        |        |                        |                                 |
| U <sub>h</sub> B11.1                      | Steward                   | CAF-11 | 3800   | Fred J. Haller         |                                 |
| U <sub>h</sub> B9.1                       | Asst. Steward             | CAF-9  | 3200   |                        |                                 |
| U <sub>h</sub> B9.3                       | Asst. Steward             | CAF-9  | 3200   | Byron C. Hughes        |                                 |
| U <sub>h</sub> B7.1                       | Storekeeper               | CAF-7  | 2600   | Fred O. Saunders       | (Acting - U <sub>h</sub> B6.1)  |
| Finance Section                           |                           |        |        |                        |                                 |
| U <sub>h</sub> C12.1                      | Finance Officer           | CAF-12 | 4600   | Victor J. Ryan         |                                 |
| Budget and Accounts Unit                  |                           |        |        |                        |                                 |
| U <sub>h</sub> C11.1                      | Fiscal Accountant         | CAF-11 | 3800   | James M. Grace         | (Acting - U <sub>h</sub> C10.1) |
| U <sub>h</sub> C9.1                       | Asst. Fiscal Accountant   | CAF-9  | 3200   | J. Gordon Seaman       |                                 |
| U <sub>h</sub> C7.6                       | Jr. Fiscal Accountant     | CAF-7  | 2600   |                        |                                 |
| U <sub>h</sub> C5.1                       | Fiscal Accounting Clerk   | CAF-5  | 2000   | Julena T. Steinheider  |                                 |
| U <sub>h</sub> C9.2                       | Auditor                   | CAF-9  | 3200   | Ralph E. Cook          |                                 |
| U <sub>h</sub> C7.1                       | Asst. Auditor             | CAF-7  | 2600   | Willie G. Fryer        |                                 |
| U <sub>h</sub> C5.2                       | Audit Clerk               | CAF-5  | 2000   | Viola M. Nelson (Mrs.) |                                 |
| U <sub>h</sub> C6.1                       | Agent Cashier             | CAF-6  | 2300   | Lyle E. Jay            |                                 |
| Cost Accounting and Property Control Unit |                           |        |        |                        |                                 |
| U <sub>h</sub> C11.2                      | Cost Accountant           | CAF-11 | 3800-  | Boyd N. Larsen         |                                 |
| U <sub>h</sub> C9.3                       | Asst. Cost Accountant     | CAF-9  | 3200   | Donald F. Sump         |                                 |
| U <sub>h</sub> C7.2                       | Jr. Cost Accountant       | CAF-7  | 2600   | John J. Graham         |                                 |
| U <sub>h</sub> C5.3                       | Cost Accounting Clerk     | CAF-5  | 2000   | Roy L. Tiger           |                                 |
| U <sub>h</sub> C7.3                       | Storekeeper               | CAF-7  | 2600   | Howard E. Lewis        |                                 |
| U <sub>h</sub> C5.5                       | Asst. Storekeeper         | CAF-5  | 2000   | (Harlow H. Graham)     |                                 |
| U <sub>h</sub> C5.6                       | Asst. Storekeeper         | CAF-5  | 2000   | Harold D. Sturm        |                                 |



# ADMINISTRATIVE MANAGEMENT DIVISION (2)

| Authorized<br>Pos No.   | Title                    | Grade | Salary | Incumbent                   | Remarks |
|-------------------------|--------------------------|-------|--------|-----------------------------|---------|
| UhcB7.4                 | Property Officer         | CAF-7 | 2600   | Roland Washburn             |         |
| UhcB5.4                 | Property Clerk           | CAF-5 | 2000   | William R. Millhollin       |         |
| Office Services Section |                          |       |        |                             |         |
| UhdB5.1                 | Office Manager-          | CAF-5 | 2000   | Victoria L. Novicki         |         |
| UhdB4.1                 | File Clerk               | CAF-4 | 1800   | Josephine Hall              |         |
| UhdB4.2                 | Gateman                  | CAF-4 | 1800   | Roby R. Wisdom              |         |
| UhdB4.3                 | Gateman                  | CAF-4 | 1800   | Charles B. McFarland        |         |
| UhdB3.1                 | Supv. Telephone Operator | CAF-3 | 1620   | Maxine E. Main (Mrs.)       |         |
| UhdB2.1                 | Telephone Operator       | CAF-2 | 1440   | Nellie E. Follensbee (Mrs.) |         |
| UhdB2.2                 | Telephone Operator       | CAF-2 | 1440   | Maude L. Moore (Mrs.)       |         |
| UhdB2.3                 | Telephone Operator       | CAF-2 | 1440   | Lillian M. Bueley           |         |
| Statistics Section      |                          |       |        |                             |         |
| UheA9.1                 | Statistician             | P-3   | 3200   |                             |         |
| Personnel Section       |                          |       |        |                             |         |
| UhfB7.1                 | Personnel Officer        | CAF-7 | 2600   | Leota F. Williams           |         |

Total Authorized Positions 38  
Total Authorized Annual Salary \$102,040

## GRAND TOTAL

|                      |     |           |                                 |
|----------------------|-----|-----------|---------------------------------|
| Project Management   | 9   | \$ 32,120 |                                 |
| Community Management | 109 | 252,720   |                                 |
| Operations           | 41  | 113,600   | + 1 Temp. 6 mos. (43 - 116,940) |
| Administrative Mgt.  | 38  | 102,040   |                                 |
|                      | 197 | \$500,480 |                                 |