

K4.37:1

1 of 3

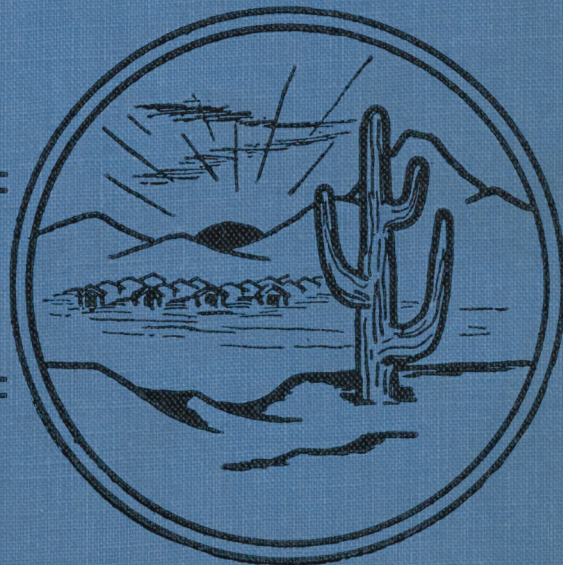
1943

67/14  
C



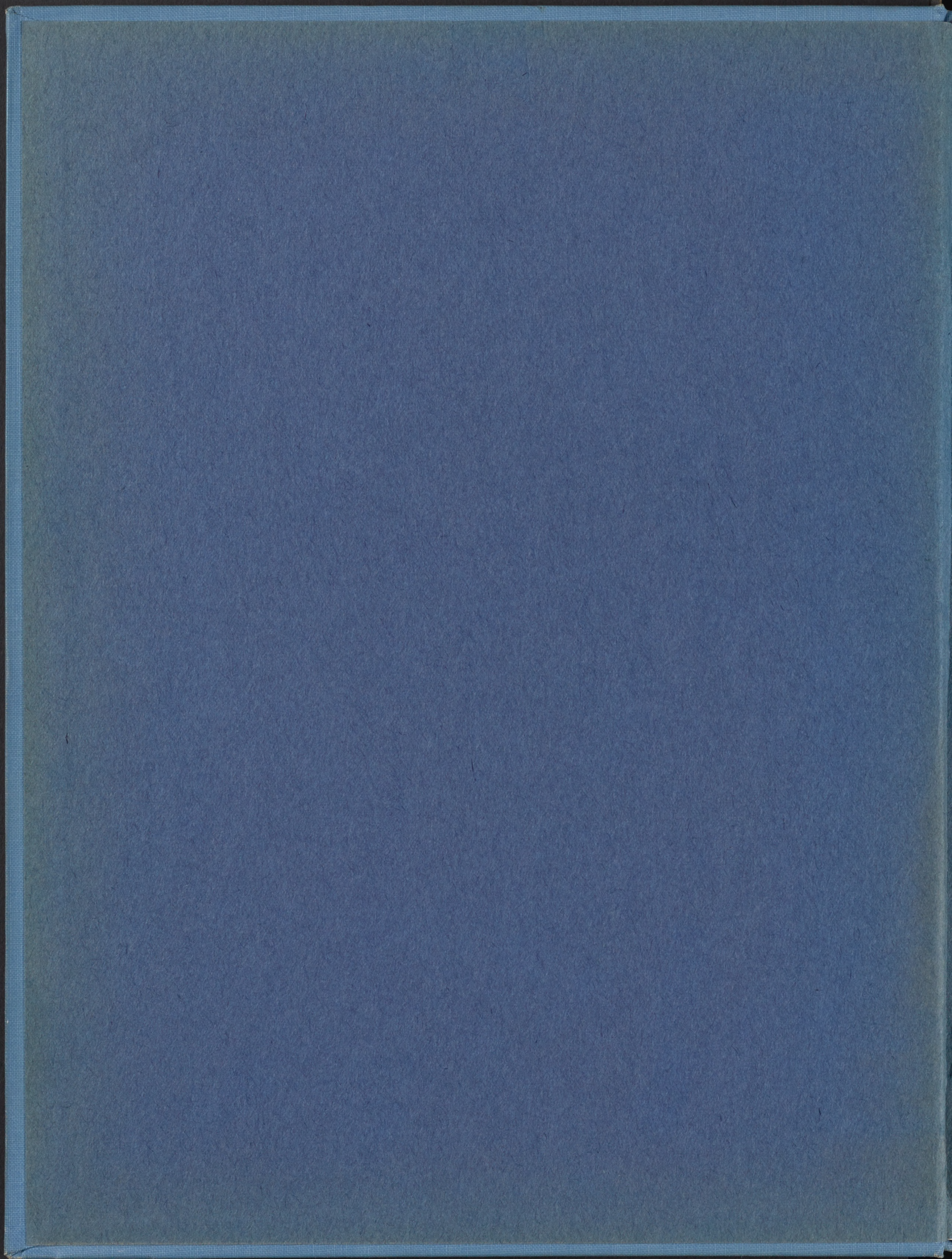
UCO  
K4.34

**R  
I  
V  
E  
R  
E  
T**

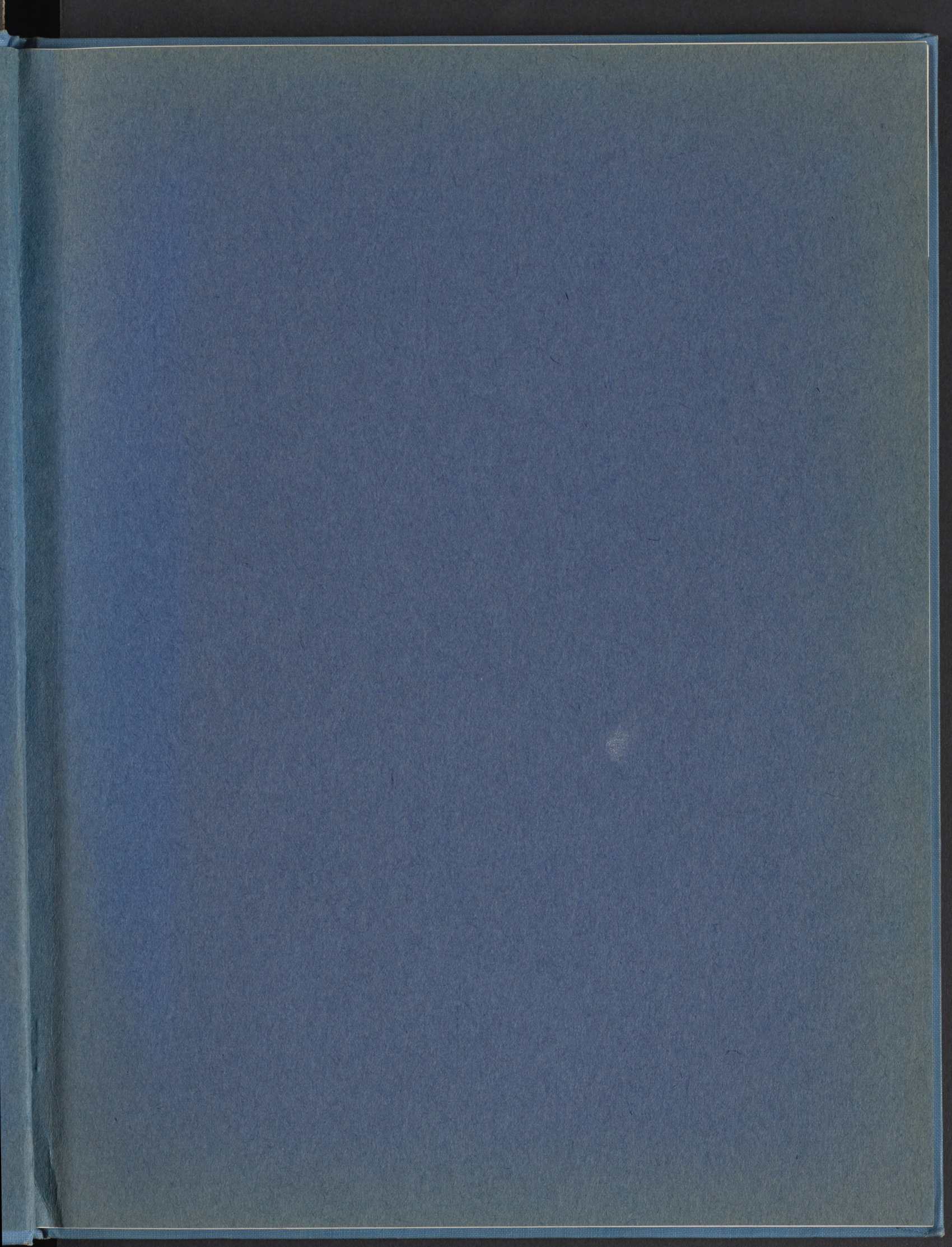


**1943**

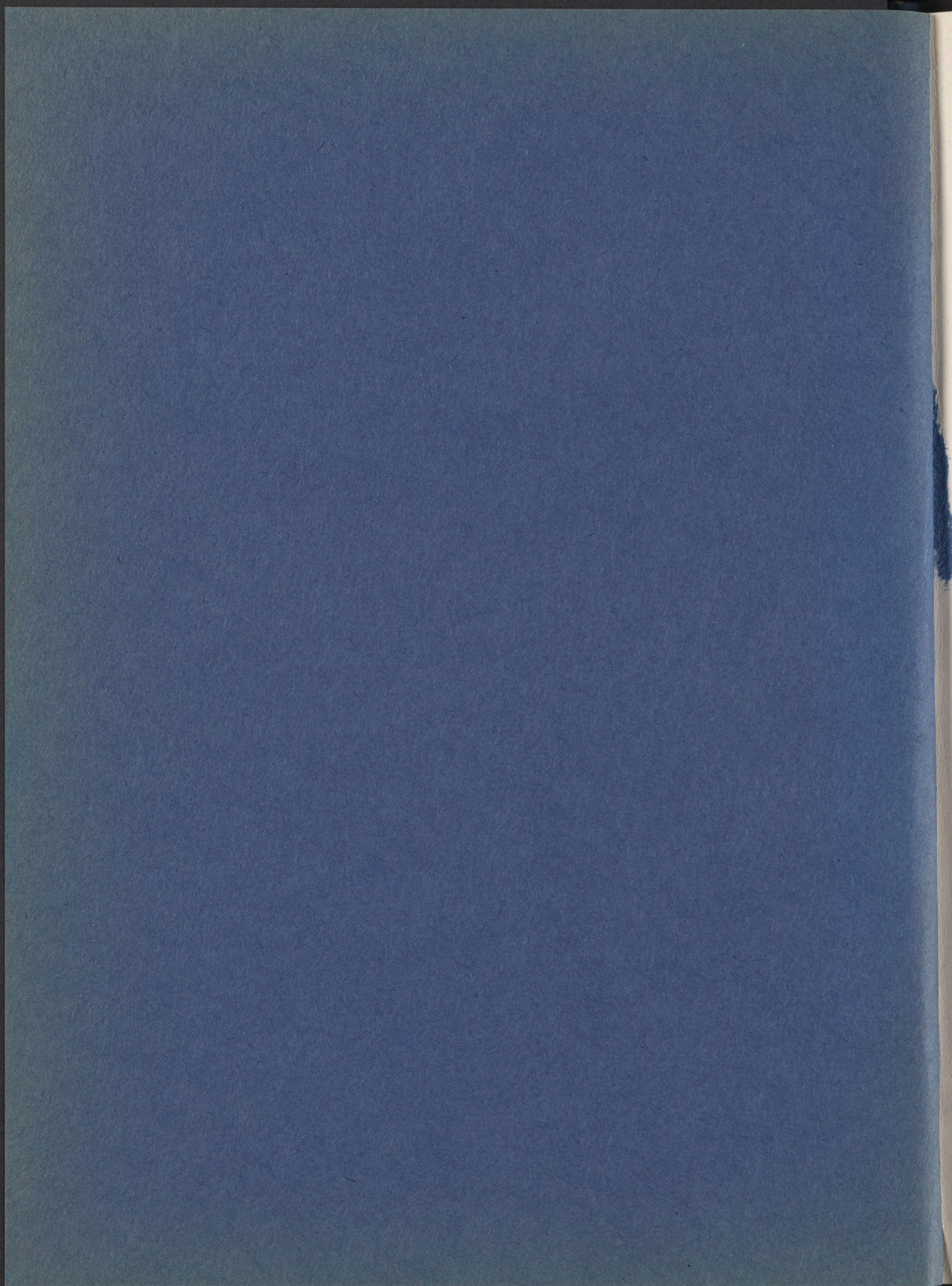








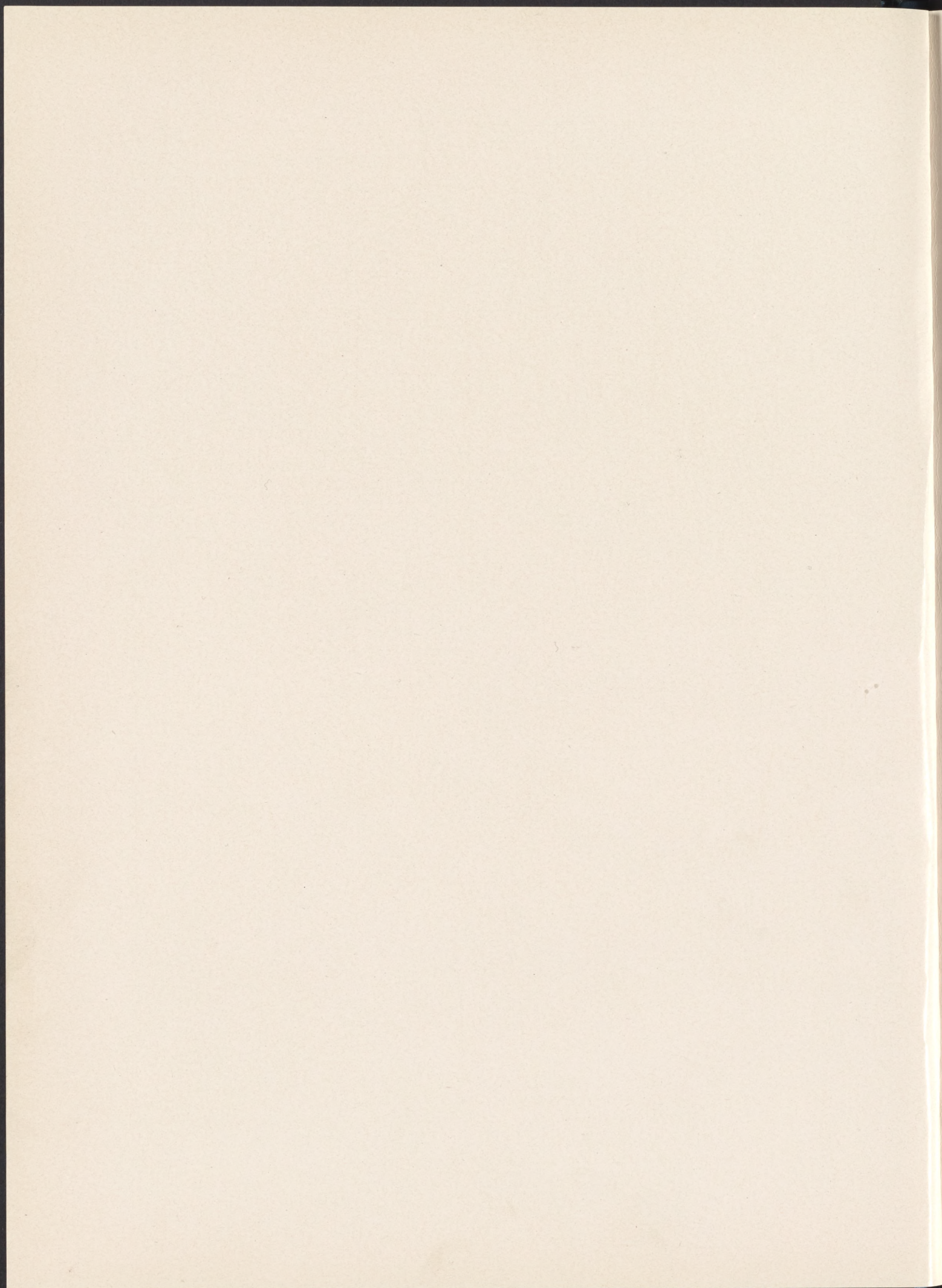






Uc<sup>o</sup>







FIRST EDITION

# RIVULET

1943



Published by

The Students  
of  
Canal High School

Rivers, Arizona



# History



ALTHOUGH they were forced to leave their homes and friends, the students of Canal High School did not leave their desire for knowledge. Canal High threw its doors open on October 12 for approximately 500 students who had registered on the 5th and 6th. They started without books, and used barrels and boards for chairs. The enthusiastic student body overcame those handicaps and without delay chose the school colors, Blue and Gold; the school emblem, the Golden Bear; and the motto, "Enter to learn, go forth to serve." They selected, from their group, a committee to draw up the school constitution. This, upon completion, was ratified by two-thirds of the entire student body.

Following the procedure stated in the constitution, student body and class officers were elected.

Mr. J. P. McVey became the principal when Mr. Fred Miller, who first filled that position, moved to Butte. Disregarding the lack of equipment, the faculty and student body have striven to make Canal High a school with a remarkable scholastic record. Thus, all "Enter to learn; go forth to serve."



# Foreword

**I**N this ever-changing world, few things have such enduring qualities as the ideals of American youth. What could be a better symbol of the persistence of these ideals than a rivulet?

Gathered here from various places in California into a life so different, our hearts did not despair, for, although we had left behind many material things, we did not leave our courage, our fortitude, and our ability to do the best with the least.

We have striven for a high standard of education and citizenship. We have ingeniously utilized every opportunity toward our goal. When we have reached that goal, we can turn the pages of this annual, fondly remembering that our lives, too, were a rivulet.

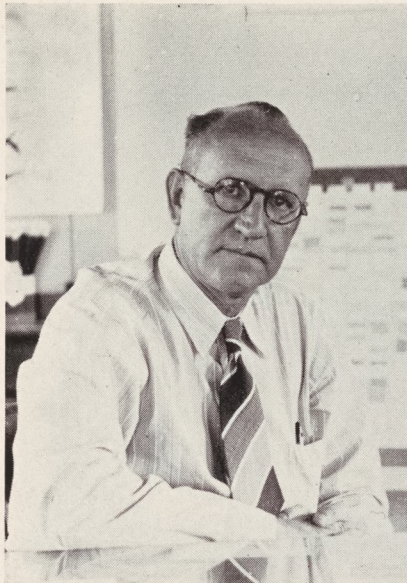
With this thought in mind, the staff presents to you this first edition of your high school annual.

## CONTENTS

- I Faculty
- II Classes
- III Activities
- IV Sports



# Dedication



THE Rivulet Staff pays this simple but sincere tribute to our Principal, Mr. J. P. McVey. He is a man of merit, culture, patience and strength—one well fitted to direct an institution of learning. We are happy to have known Mr. McVey, and with pleasure, dedicate this first edition of the Canal High School Rivulet to him.



## *Principal's Message*

**M**Y experience with young Americans of Japanese ancestry has been most pleasant and stimulating. It has also been enlightening.

Expecting to find bitterness and resentment I found cheerfulness and appreciation; where I feared to find a tendency toward a foreign loyalty, I have found an aggressive loyalty to America, a loyalty that persists and grows in the midst of a war hysteria that subjects them to many persecutions and heart-sickening insults.

For these young American citizens of Japanese ancestry place their trust in the Atlantic Charter and the Four Freedoms. They are distrustful of an ideology that advocates race superiority. They know that their fathers and mothers came to this country to enjoy the privileges and benefits of a social order subscribing to the proposition that "all men are created equal." They place their trust in the Constitution and in the law of these United States which they understand rather than in vague predictions of a "new order" forced upon unwilling people by military aggressors.

Thousands of high schools throughout the United States are presenting their graduates in commencement exercises. Canal High School joins company with them and presents its Class of '43. You will find them courteous, industrious, ambitious, intelligent and fiercely loyal to this nation. They are ready and able to take their rightful place as citizens. They will keep the faith; they will help build a greater America and a safer and kindlier world.

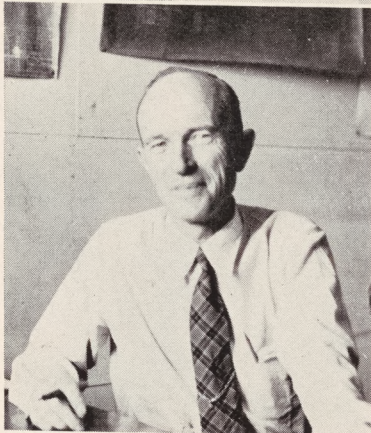


# Administration



Education is the continuous process of preparation for and participation in life. Book knowledge is good, but education continues every day, every hour, and every minute. The use to which High School graduates put their knowledge in real life situations is of far greater value than the academic grades achieved.

LEROY H. BENNETT  
Project Director



To fully appreciate a diamond one should see it in its rough uncut form then later in its polished brilliant gleaming form. Likewise to appreciate a smoothly functioning high school one must see it develop from an idea to a reality.

The seniors and students of C.H.S. will look back with pride upon the work of their creation this year. It has been an enviable accomplishment to develop in one short year the school spirit, the unity of purpose, the diversity and quality of extra-curricular activities which C.H.S. may well boast.

The accomplishment indicates vision, resolve and persistence. I congratulate you and wish you well.

W. C. "TOM" SAWYER,  
Superintendent of Education.

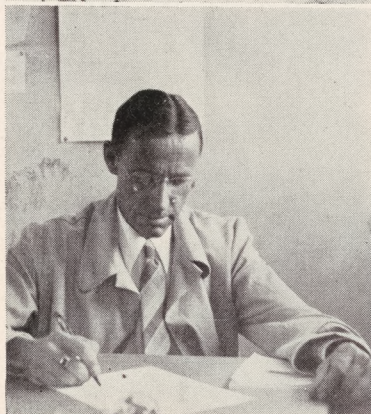


Heartiest congratulations to the Annual Staff and to the student body of the Canal High School! It has been a real pleasure knowing you and working with you.

By your efforts and activities you have demonstrated that you have a sincere interest in your preparation as citizens and in making yourselves better prepared workers. You have also shown your desire to achieve a worthy use of your leisure and that you are anxious to develop well-rounded personalities. With a program founded on such fundamental principles you will continue in the years to come to carry on with high ideals.

Sincerely,

G. P. YOUNG.



The Canal High School student body is to be congratulated on the fine record made there this year. It gives me a great deal of personal satisfaction and gratification to note your progress since I had the opportunity to work very closely with you at the beginning. The pride and loyalty you display in your school will continue to make Canal High School a desirable and worthwhile institution. The good work you have done this year as illustrated by this year book will, I know, be a bright page in your experience.

Sincerely,

W. E. MILLER.



## P. T. A.



P.T.A. OFFICERS—Mr. George Kawahara, president; Mrs. Tomoko Yamamoto, advisor; Mrs. Mary Fukuzawa, vice president; Mrs. Grace Sakai, secretary; Miss Chizu Nakashima, treasurer.

### PARENT-TEACHERS ASSOCIATION

**I**N order to develop between teachers and the general public a united effort that will secure for every student the highest advantages in education, the Canal Chapter of the Parent-Teachers Association was established.

Not only has the Parent-Teachers Association brought about a more united effort among the parents, teachers, and students to further education, but it has also taken an interest in remedying the various needs of the school, helped to make successful the various school activities, and rendered service toward establishing an efficient student government.

We, the Associated Students of Canal High School, appreciate your interest in our school.

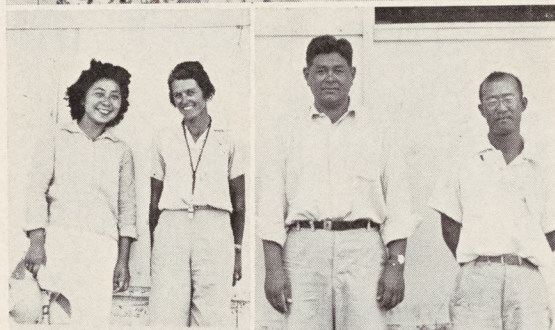


# Faculty



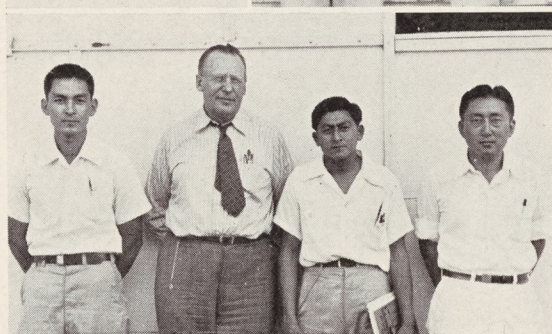
## Home Economics

Yoshiye Tara  
Dorothy Lee  
Susie Oda



## Physical Education

Grace Nakagawa  
Mary Hughes  
George Domoto  
Goro Maeda



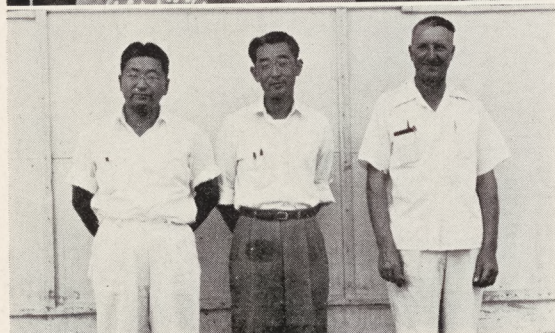
## Industrial Arts

Akira Shimizu  
Harting O. Bjerg  
Harry Hirasuna  
Keichi Hayame



## English

Harold M. Fukuma  
Cecile Lancaster  
Paul Shiozaki  
Nettina L. Strobach  
Florence Akiyama



## Science

Kay Nobusada  
Clifford C. Fujimoto  
Frank Kino (not pictured)

## Agriculture

Claude A. Tyrrel



# Faculty

## Art Department

Matsuka Kifune  
Robert J. Slate

## Music

Warren D. Higgins  
Jesse S. Sedberry

## Commercial

Shigeko Nakata  
Catherine Matsumoto  
George Tanigawa  
Susie Oda  
Mary Asada (not pictured)

## Librarians

Helen Tanaka  
Yoshiye Domoto  
Gladys Kouno  
Masae Arita

## Social Science

Lucile Peddy  
Lillian Bearss

## Commercial

Della M. Taylor

## English

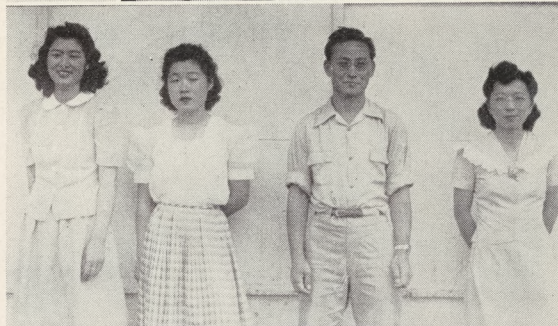
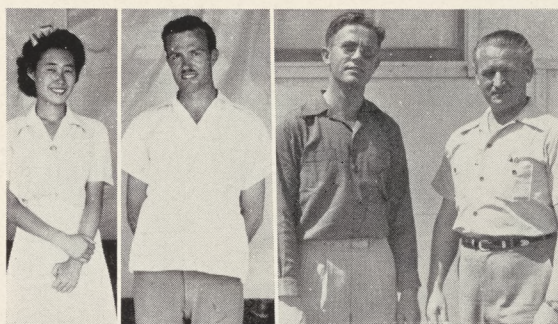
Ethel Fleming

## Mathematics

John C. Brunstein  
Masao Yoshitsu  
Ben Umeda

## Foreign Language

Helen G. Yeaton







1—Office. 2—History. 3—Biology. 4—Bookkeeping. 5—Commercial



# CLASSES





## GOOD LUCK SENIORS

On October 12, 1492  
Columbus discovered America.  
On October 12, 1942  
Canal High began at Gila.  
The year was full of joy and fun  
Especially on the senior day.  
The bazaar went over with a bang  
The Jr.-Sr. Prom, too, was okay!  
When we look back at our school year,  
Sweet memories will never die.  
Although we wish and want to stay,  
We must bid you all good-bye!  
Remember, Seniors, whatever you do  
God's protecting you every day.  
Have faith and confidence in yourself,  
And success will surely come your way!

—by Helen Tanigawa



# Senior Class

## OFFICERS



Joseph Narasaki, president; Harry Kouno, vice president; Harriett Shirakawa, secretary; Helen Tanigawa, treasurer; Bill Seiji, class representative; Julia Seiji, yell leader.

## CLASS HISTORY

**F**OUR years have passed quickly since they entered different high schools in the fall of 1939, as a group of anxious Freshmen.

Individually and as a group, those included in the first graduating class of Canal High have achieved much in scholarship, leadership, social life, and athletics in the intervening years.

The outstanding social events of the year were: mid-term Senior Social, Senior Ditch Day, Senior Bazaar, Junior-Senior Prom, and the Senior Banquet.

Although the social activities were especially successful, they never interfered with their scholastic work.

What has been is now no more! As they leave Canal High, the seniors experience a natural sadness, but this is overshadowed by the ambition of the class members to go out into the world and write a record of success and achievement.

The faculty advisors were Mrs. Lucille Peddy, Mrs. Helen Yeaton, and Miss Della Taylor.

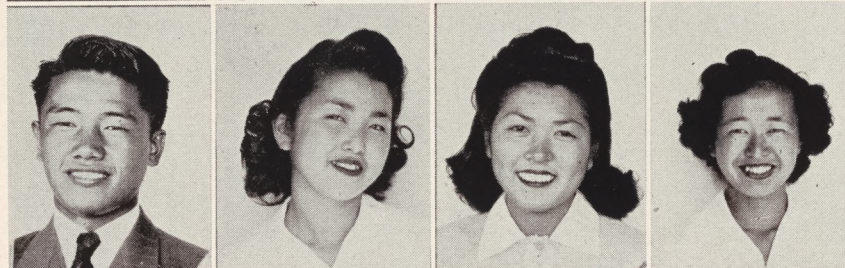


# Seniors

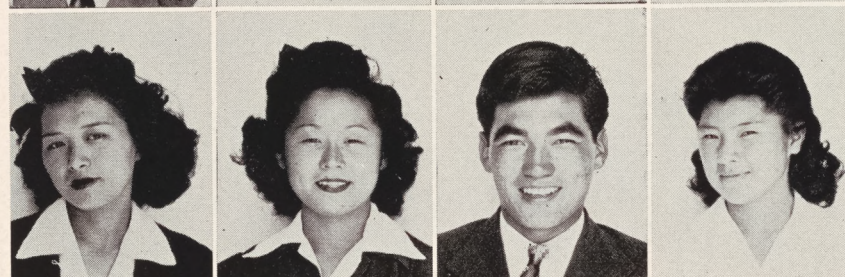
TOM AOKI  
KIMI ARAKAKI  
BETTY DOI  
GEORGE ETO



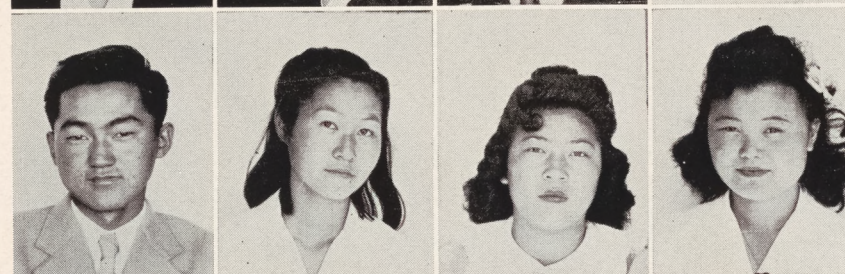
JIRO FUJII  
LILY FUJIMOTO  
JANET FUJIMOTO  
MITZI FUJIWARA



KAZUKO GOTO  
ROSE HAGIHARA  
JOE HAMAGUCHI  
MAYME HAMAKATA



YUTAKA HAMASAKI  
RUTH HAMATAKA  
ALICE HARA  
ROSE HARA



JIMMY HARADA  
KAZUE HARADA  
ROY HARADA  
HIDEO HASHIMOTO

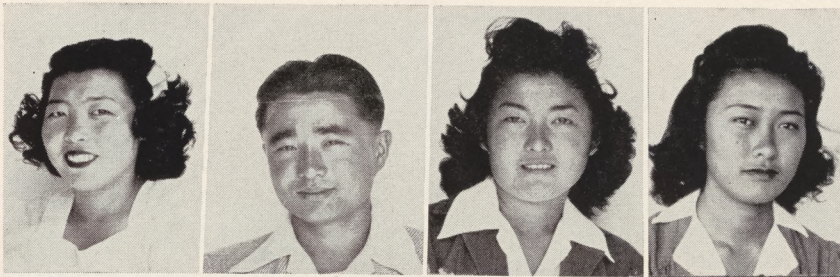


SATOSHI HATA  
SETSUKE HEYANO  
NAMIKO HIRABAYASHI  
KAREN HIRASUNA

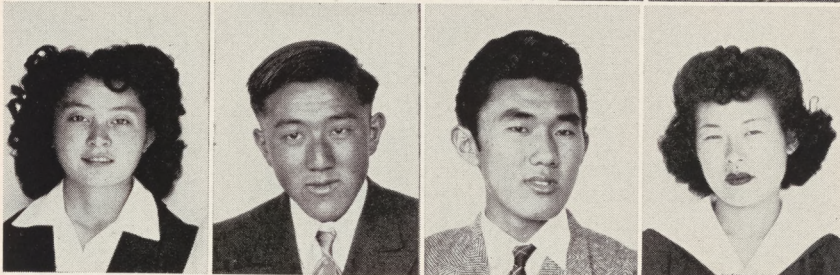




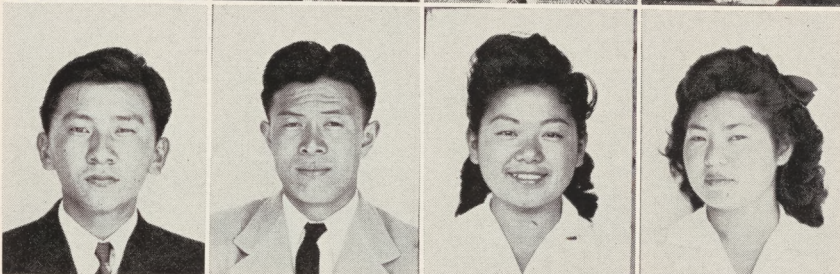
# Seniors



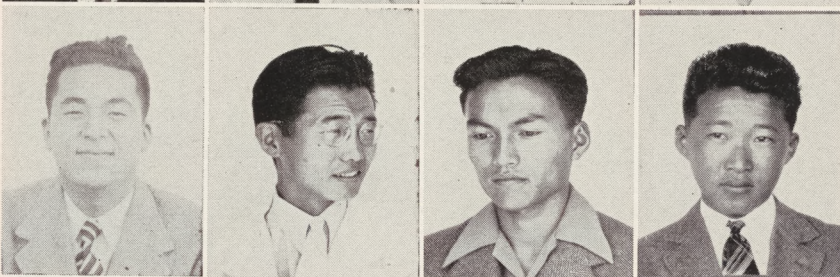
YOSHIKO HIRATA  
IWAO HIROSE  
TERU HOKODA  
SUYEME HONDA



MITSUYE HOSHIZAKI  
KENJI ICHIHANA  
STEPHEN ICHIKI  
NATSU IKEDA



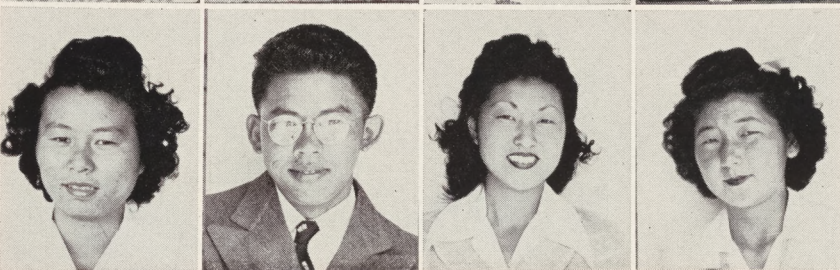
KENJI IKEJIRI  
RICHARD INOKUCHI  
HARUKO ISHIMINE  
ROSE ITO



ROBERT IWAKAMI  
GEORGE IWATSUBO  
YOSHIHARU KAGAWA  
TOM KAITA



MARY KASUGAI  
TED KATSURA  
NOBUKO KIDO  
GEORGE KITAGAWA



FRANCES KOJIMA  
HARRY KOUNO  
AIKO KOBASHI  
YOSHIKO KOTSUBO



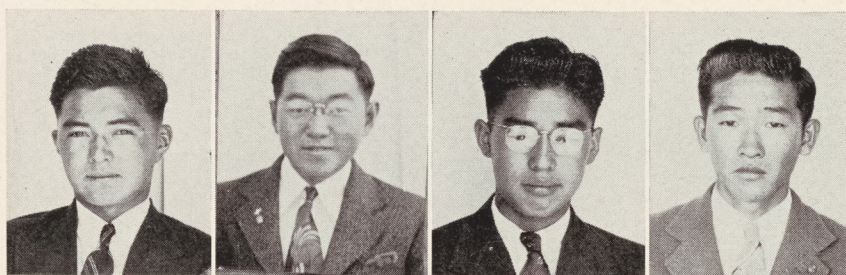
# Seniors

TED KUBOTA

WILSON KUMATAKA

JIMMY KURATA

RAY MATSUHISA

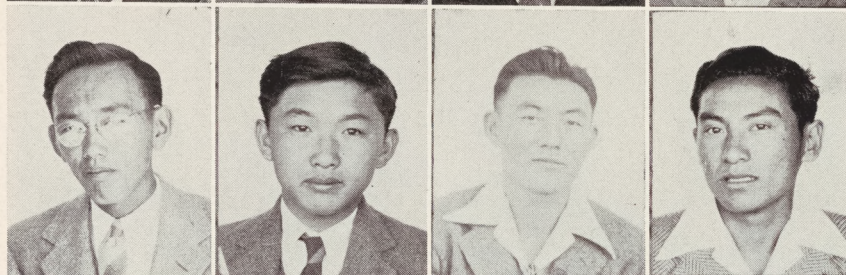


BEN MATSUI

GEORGE MATSUO

VICTOR MATSUSHIMA

YOSHIO MINAMI

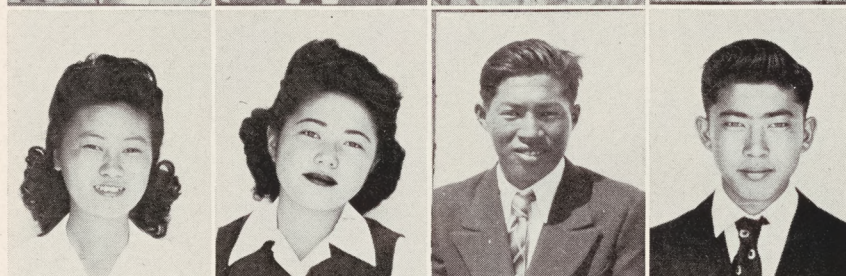


MARY MIZUFUNE  
(Valedictorian)

EMI MORI

TAKESHI MURAKAMI

ISAMI MURAYAMA

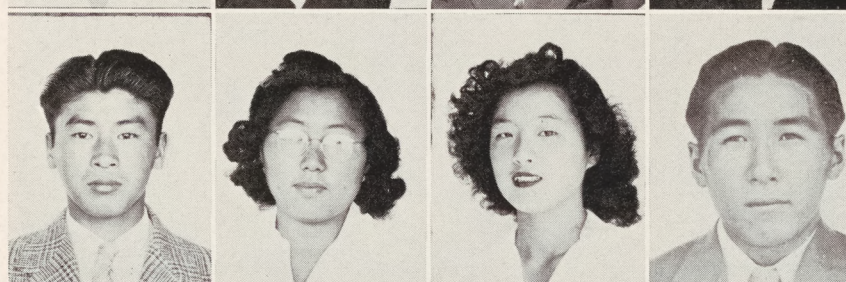


TED MUTO

FUMIYE NAGAO

YAEKO NAKAHARA

EDWARD NAKAMURA

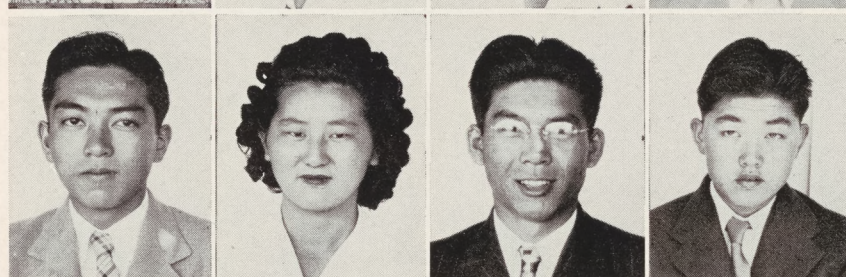


JOHN NAKATA

ROSE NAKATANI

ISAMU NAKATSUKA

BOB NAKAYAMA

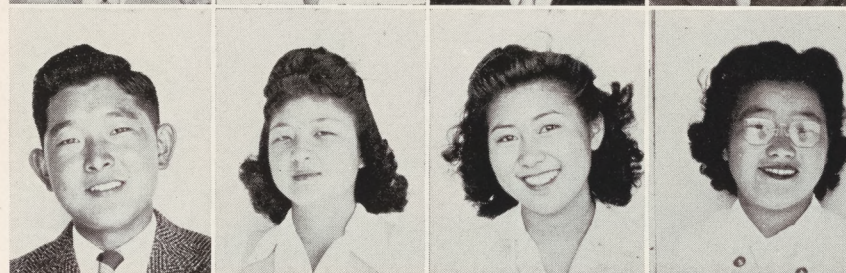


JOE NARASAKI

JEAN NINOMIYA

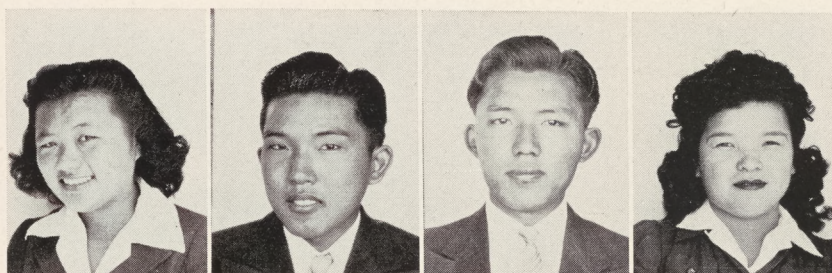
YAYOI NISHIKAWA

MICHIKO NISHIMOTO

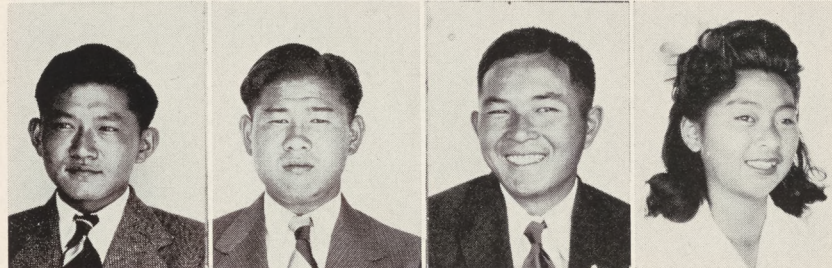




# Seniors



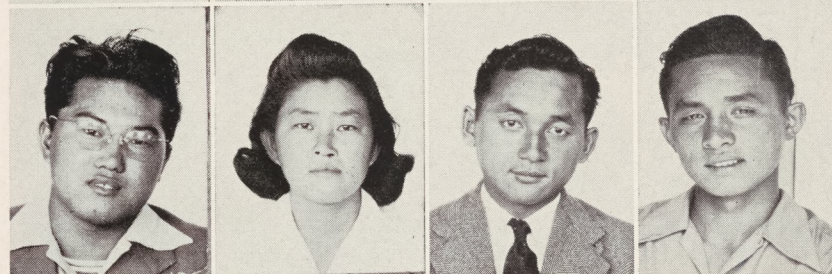
LOTUS NISHIMURA  
FRANK NISHINA  
TODD NISHINA  
MERRY NOZUMI



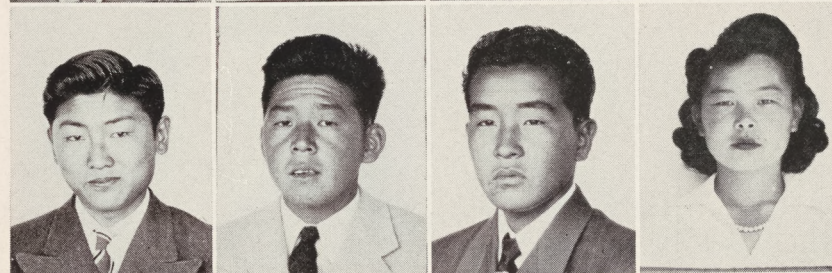
JIMI ODA  
KAZUO ODASHIMA  
GEORGE OGINO  
TAEKO OHARA



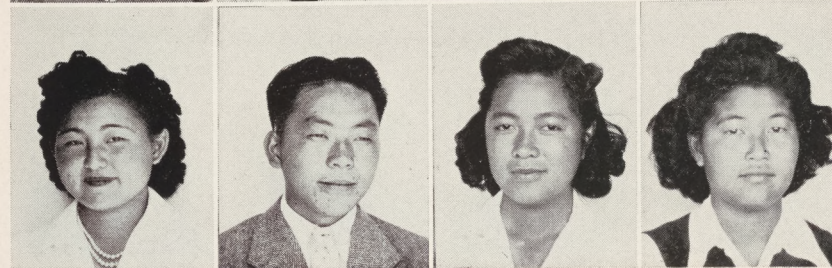
AIKO OHMAYE  
MASAKO OKADA  
(Salutatorian)  
GEORGE OKAJIMA  
MICHIKO OKINO



GEORGE OMORI  
CHIAKI OSUMI  
HIROSHI OTO  
TOSHIO OTO



GILO OTOMO  
TERUO RYONO  
MANABU SANO  
MAY SANO

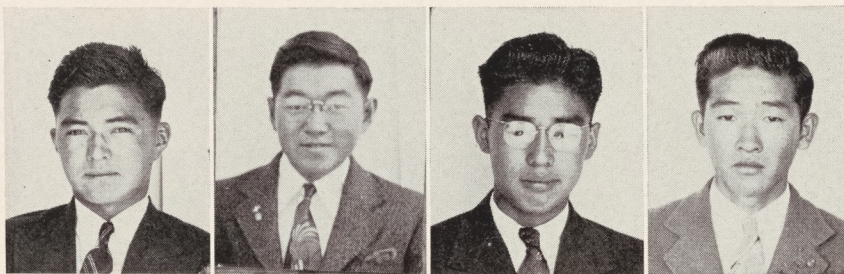


JULIA SEIJI  
WILLIAM SEIJI  
IRENE SEIKI  
MARY SHIGYO

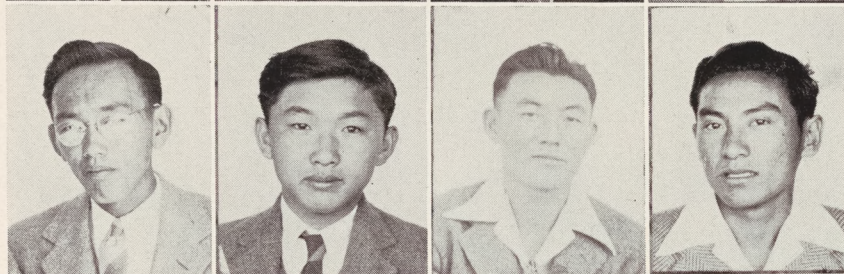


# Seniors

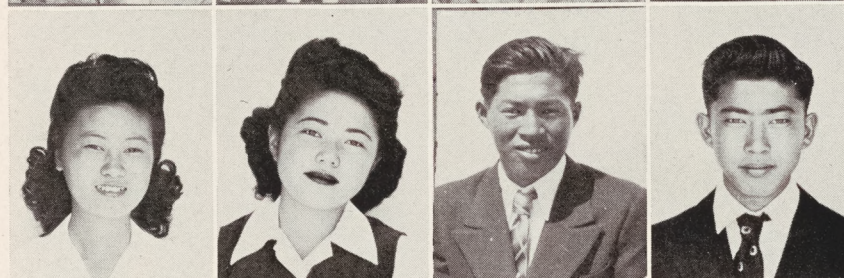
TED KUBOTA  
WILSON KUMATAKA  
JIMMY KURATA  
RAY MATSUHISA



BEN MATSUI  
GEORGE MATSUO  
VICTOR MATSUSHIMA  
YOSHIO MINAMI



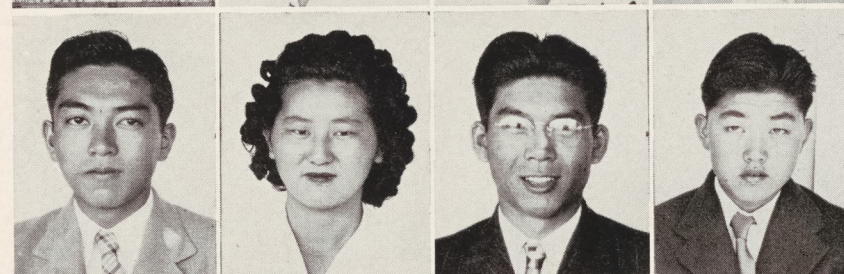
MARY MIZUFUNE  
(Valedictorian)  
EMI MORI  
TAKESHI MURAKAMI  
ISAMI MURAYAMA



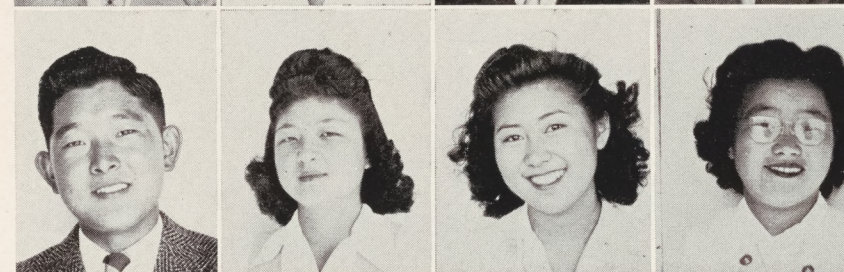
TED MUTO  
FUMIYE NAGAO  
YAEKO NAKAHARA  
EDWARD NAKAMURA



JOHN NAKATA  
ROSE NAKATANI  
ISAMU NAKATSUKA  
BOB NAKAYAMA

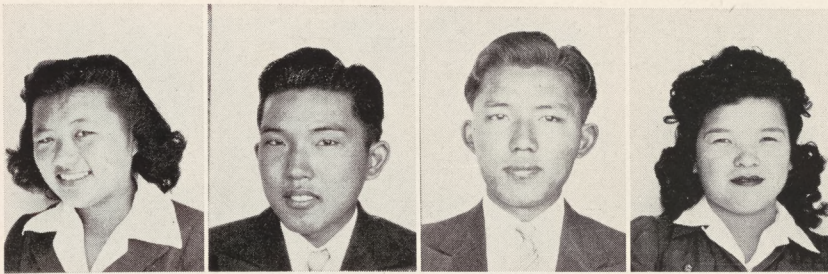


JOE NARASAKI  
JEAN NINOMIYA  
YAYOI NISHIKAWA  
MICHICO NISHIMOTO

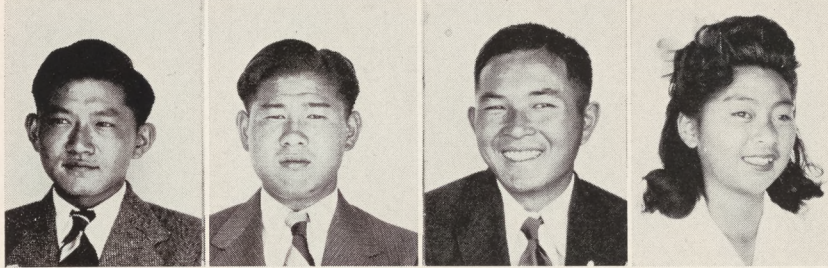




# Seniors



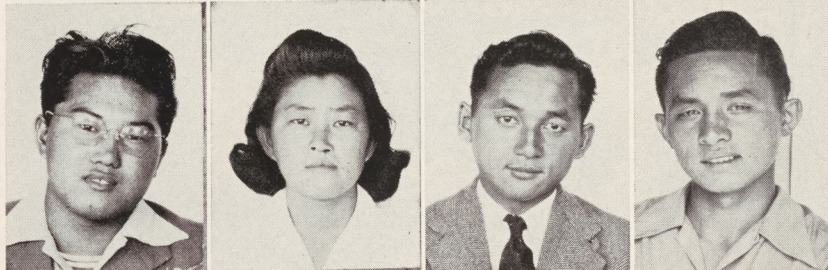
LOTUS NISHIMURA  
FRANK NISHINA  
TODD NISHINA  
MERRY NOZUMI



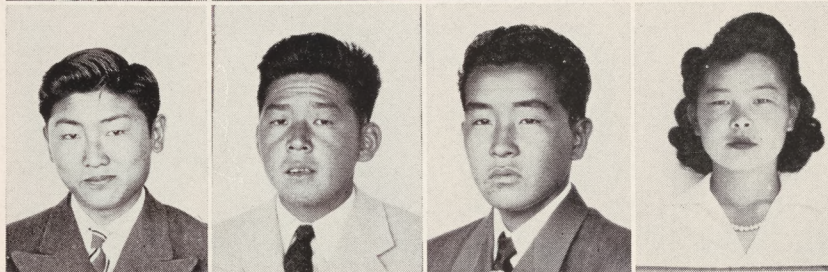
JIMI ODA  
KAZUO ODASHIMA  
GEORGE OGINO  
TAEKO OHARA



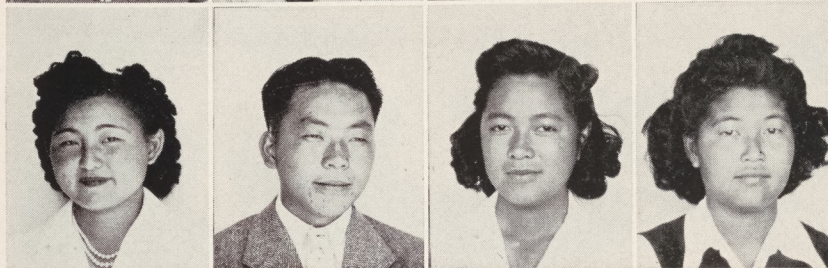
AIKO OHMAYE  
MASAKO OKADA  
(Salutatorian)  
GEORGE OKAJIMA  
MICHIKO OKINO



GEORGE OMORI  
CHIAKI OSUMI  
HIROSHI OTO  
TOSHIO OTO



GILO OTOMO  
TERUO RYONO  
MANABU SANO  
MAY SANO

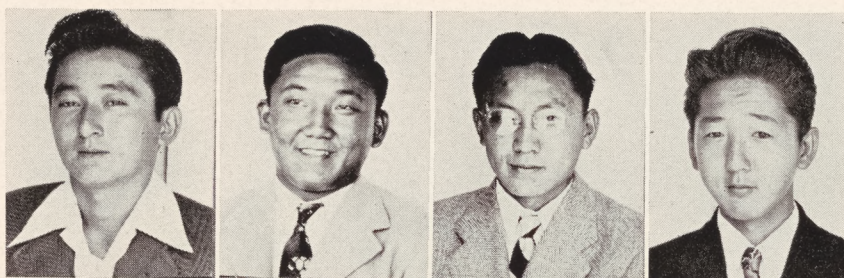


JULIA SEIJI  
WILLIAM SEIJI  
IRENE SEIKI  
MARY SHIGYO



# Seniors

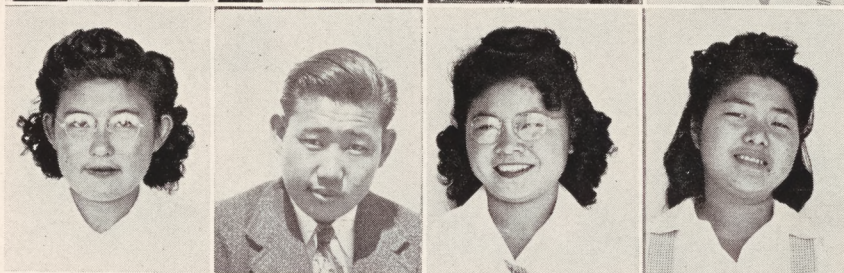
MASARU SHIMIZU  
KIYOTO SHINMOTO  
MINORU SHINMOTO  
BEN SHIOZAKI



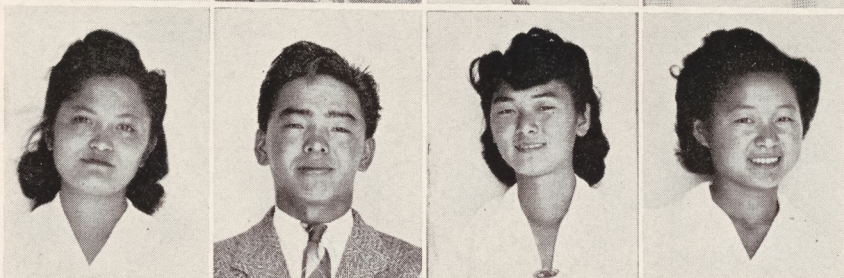
MAY SHIOZAKI  
HARRIETT SHIRAKAWA  
TAMIJI SOMEN  
MIEKO SUEHIRO



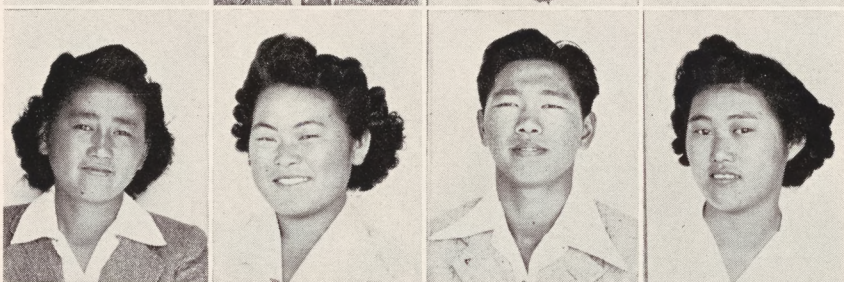
SUMIKO SUGI  
AKIO SUGIMOTO  
YASU TAKANO  
NATSUKO TAKAYAMA



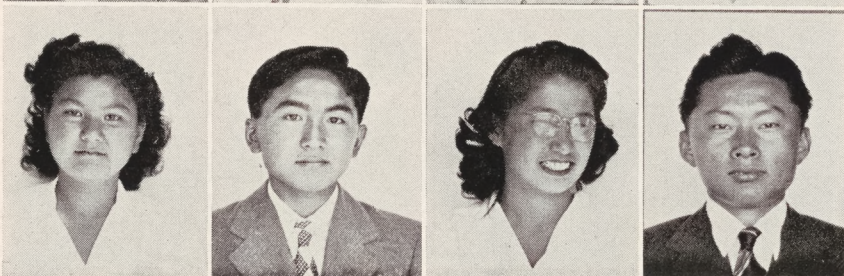
MARY TAMAKI  
GEORGE TAMORI  
SALLY TANAKA  
YUKIKO TANAKA



HELEN TANIGAWA  
TOME TANISAWA  
TOM TERAMOTO  
CLARA TOGAMI

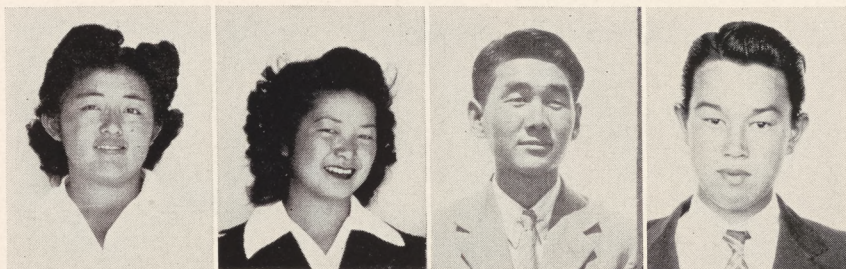


BESSIE TORII  
ROY TORII  
BETTY TOTSUBO  
HIROSHI TSUJI





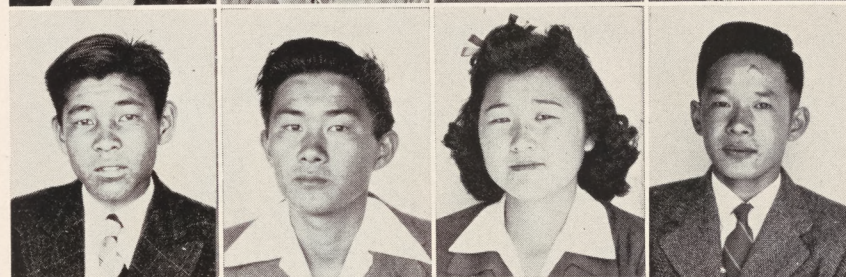
# Seniors



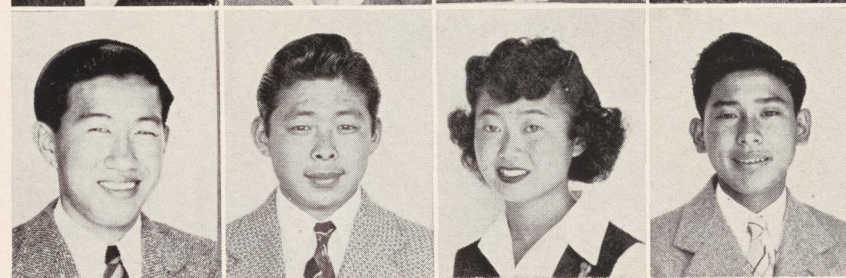
EUJEANNE UMADE  
YOSHIYE UMEDA  
TED UYENO  
THOMAS WAKIDA



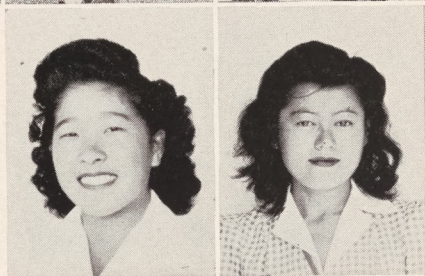
EVELYN YAHANDA  
FUSAKO YAMA  
BETTY YAMADA  
MIYOJI YAMADA



TERUMI YAMADA  
JIMMY YAMAMOTO  
KIMIYO YAMAMOTO  
YOSHIO YAMAMOTO



TONY YAMAOKA  
ROBERT YAMAZAKI  
RUTH YASUZAKI  
RALPH YOKOYAMA



HISAKO YOSHIHARA  
CHIYO YONASHIRO

(Not Pictured)  
HARRY INOKUCHI  
DICK IKEDA  
MINORU SANO



# Horoscope

NAME	WHERE FROM	APPEARANCE	OFTEN SEEN	FATE
Aoki, Tom	Rio Vista	jovial	joking	Bob Hope
Arakaki, Kimi	Selma	undisturbed	studying	secretary
Doi, Betty	Parlier	pleasing	prancing	majorette
Eto, George	Stockton	friendly	with Yoko	dishwasher
Fujii, Jiro	Berkeley	chattering	teasing girls	alimomial suit
Fujimoto, Lily	Watsonville	smiling	winking	Mrs. Poston
Fujimoto, Janet	Fowler	polite	with her one & only	George
Fujiwara, Mitsuko	Pasadena	comical	entertaining	cowgirl
Goto, Kazuko	Rio Vista	slender	talking nonsense	comedian
Hagihara, Rose	Fowler	refreshing	day dreaming	cupid's bait
Hamaguchi, Joe	Livingston	handsome	smiling	coach
Hamakata, Mayme	Parlier	athletic	singing	Ginny Simms
Hamasaki, Yutaka	Parlier	bashful	with that certain group	farmer
Hamataka, Ruth	Los Angeles	courteous	painting	artist
Hara, Alice	Fowler	quiet	minding her own business	fan dancer
Hara, Rose	Concord	saucy	practising speeches	orator
Harada, Jimmy	Sanger	alert	studying	engineer
Harada, Kazue	Walnut Grove	quiet	sewing	seamstress
Harada, Roy	Los Angeles	bashful	with Michiko	Mr. & Mrs.
Hashimoto, Hideo	Gilroy	scholarly	quietly studying	Einstein
Hata, Satoshi	Oakland	versatile	with Harry	beauty operator
Heyano, Setsuko	Selma	hurried	with book	teacher
Hirabayashi, Namiko	Sanger	jolly	saying "hello"	seamstress
Hirata, Yoshiko	Stockton	delicate	learning basketball rules	gym teacher
Hirasuna, Karen	Fowler	beautiful	singing	Lily Pons
Hirose, Iwao	Courtland	helpful	whistling	preacher
Hokoda, Teru	Hollywood	attractive	giggling	some boys' steady
Honda, Mary	Selma	glamorous	writing letters	Sleeping Beauty
Hoshizaki, Mitsuye	Suisun	neat	doing nothing	beautician
Ichihana, Kenji	Reedley	calm	escorting girls	taxi driver
Ichiki, Stephen	Walnut Grove	happy-go-lucky	eyed by the girls	hotel mgr.
Ikeda, Dick	San Jose	deftness	catching up with	
			home work	printer
Ikeda, Natsu	Concord	Hollywood	barefooted	S. American Way
Ikejiri, Kenji	Gardena	thoughtful	in deep thought	the thinker
Inokuchi, Richard	Los Angeles	admirable	in conversation	U. S. Pres.
Inokuchi, Harry	Los Angeles	quiet	going to hospital	orderly
Ishimine, Haruko	Los Angeles	personality plus	jitterbugging	first lady of the land
Ito, Rosie	Gilroy	disgusted	chewing gum	dentist
Iwakami, Robert	Los Angeles	pertinent	with his oboe	army
Iwatsubo, George	Selma	businesslike	arguing	filibustering Senator
Kagawa, Yoshiharu	Los Angeles	shy	acting	actor
Kaita, Tom	Watsonville	winning	doing Tamori's homework	bachelor
Kasugai, Mary	Los Angeles	demure	walking alone	advice to lovelorn
Katsura, Ted	Reedly	boyish	playing trumpet	Harry James
Kido, Nobuko	Concord	quiet	studying	teacher
Kitagawa, George	Gilroy	neat	irrigating	farmer



# Horoscope

NAME	WHERE FROM	APPEARANCE	OFTEN SEEN	FATE
Kobashi, Aiko	Fowler	feminine	doing nothing	boss's wife
Kojima, Frances	Suisun	sleepy	up to mischief	who knows?
Kouno, Harry	Fowler	clever	on the contrary	radical
Kotsubo, Yoshiko	Selma	mmm not bad	out	unpredictable
Kubota, Ted	Parlier	nice	at farm	Wickard
Kumataka, Wilson	Parlier	dignified	being teased	Morgenthau
Kurata, Jimmy	Fowler	friendly	with Harry	news boy
Matsui, Ben	Selma	willing	mimeographing	editor
Matsuo, George	Winters	honest	contradicting	debator
Matsushima, Victor	Sanger	serious	doing Jiu-Jitsu	circus
Minami, Yoshio	Gardena	peaceful	riding on bicycle	author
Mizufune, Mary	Winters	dependable	in the music room	concert pianist
Mori, Emi	Suisun	imperturbable	smiling	Florence Nightingale
Murakami, Takeshi	Courtland	jubilant	baseball ground	Yankee's mgr.
Murayama, Isami	Kingsburg	presentable	alone	Lone Ranger
Matsuhisa, Ray	Selma	alert	behind the counter	Philip Morris
Muto, Ted	Suisun	neat	with girls	warden
Nagao, Fumiye	Selma	quiet	but not heard	news commentator
Nakahara, Yaeko	San Francisco	good-natured	wiping eyeglasses	Veronica Lake
Nakamura, Ed	Parlier	energetic	pitching	Lefty Gomez
Nakata, John	Kingsburg	mannish	flirting	bachelor
Nakatani, Rose	Selma	inquisitive	asking	Dr. I. Q.
Nakatsuka, Isamu	Tajanga	quiet	at home	principal
Nakayama, Bob	Selma	girl shy	doing solid geom.	Euclid
Narasaki, Joseph	Monterey	suave	with his gang	Charles Boyer
Ninomiya, Jean	Fowler	tired	with Tony	cupid
Nishikawa, Yayoi	Rio Vista	cordial	running after Mr. McVey	principal's pest
Nishimoto, Michiko	Vacaville	cheerful	with Ace	San Ramon
Nishimura, Lotus	Suisun	chummy	giggling	jester
Nishina, Frank	Fowler	tranquil	mistaken for Tad	farmer
Nishina, Tadao	Fowler	reserved	mistaken for Frank	aviator
Nozumi, Merry	Sanger	studious	carrying books	accountant
Oda, Jimi	Fowler	solemn	at the canteen	soda jerker
Ogino, George	Stockton	studious	with books	photographer
Ohara, Taeko	Walnut Grove	glamorous	quietly listening	Hedy Lamarr
Ohmaye, Aiko	Los Angeles	graceful	with Mieko	perfect wife
Okada, Masako	Los Angeles	coy	studying Home Ec.	dietician
Okajima, George	Sanger	idle	out of school	stealing Ty Power's stuff
Okino, Michiko	Parlier	childish	reading books	librarian
Omori, George	Parlier	husky	loafing	strongman
Osumi, Chiaki	Parlier	nice	figuring shorthand	shorthand teacher
Oto, Hiroshi	Courtland	modest	with Steve	educated bum
Oto, Toshio	Courtland	handsome	at ham ham's	Robert Taylor
Otomo, Gilo	Selma	impossible	playing violin	Jack Benny
Ryono, Teruo	San Pedro	athletic	looking down	ath. mgr.
Sano, Manabu	Concord	Valentino	carving	Casanova
Sano, May Satsuko	Vacaville	calm	studying	"Rastus"



# Horoscope

NAME	WHERE FROM	APPEARANCE	OFTEN SEEN	FATE
Sano, Minoru	Vacaville	haircut	in Blk. 5	Major
Seiji, Julia	Vacaville	dimples	with Helen	3rd. of Andrew sis.
Seiji, William	Suisun	serious	reading	critic
Seiki, Irene	San Francisco	quiet	with books	teacher
Shigyo, Mary	Parlier	neat	in study hall	Mrs. ?
Shimizu, Masaru	Rio Vista	shy	reading Westerns	Texas Ranger
Shinmoto, Kiyoto	Kingsburg	Hercules	grinning	Charles Atlas
Shinmoto, Minoru	Kingsburg	Professor	in art room	artist
Shiozaki, Ben	Winters	shy	playing ping pong	ping pong champ
Shiozaki, May	Winters	sincere	in block 16	marriage
Shirakawa, Harriett	Fowler	sleeping	disappearing	magician
Somen, Tamiji	Los Angeles	eccentric	studying	genius
Suehiro, Mieko	Los Angeles	figure	going home	model
Sugi, Sumiko	Stockton	petite	with glasses	optometrist
Sugimoto, Akio	Centerville	sleepy	not in school	truant officer
Takano, Yasu	Parlier	cute	with dark glasses	Betty Grable
Takeuchi, Takeo	San Fernando	polite	studying	bachelor
Takayama, Natsuko	Parlier	modest	studying shorthand	steno.
Tamaki, Mary	Honolulu	kind	wishing	Waikiki
Tamori, George	Concord	friendly	pestering	teacher
Tanaka, Michiko	Torrance	quiet	paying attention	teachers favorite
Tanaka, Yukiko	Sanger	friendly	smiling	marriage
Tanigawa, Helen	Sanger	modest	writing poetry	America's poet laureate
Tanisawa, Tome	Hayward	elegant	keeping others	gym teacher
Togami, Clara	Vacaville	lanky	trying to catch on	housewife
Torii, Bessie	Selma	conserved	with Eugene	domestic science teacher
Torii, Roy	Selma	brainstorm	doing bookkeeping	case worker
Totsubo, Taka	Pasadena	dainty	drawing	int. decorator
Tsuji, Hiroshi	Martinez	alert	listening	real estate agent
Wakida, Thomas	Rio Vista	stately	on horse	cow boy
Umade, Eugene	Selma	natural	knitting	wife
Umeda, Yoshiye	Hollywood	quaint	with Sat. Hata	?
Uyeno, Takato	Parlier	quiet	driving truck	truck driver
Yahanda, Evelyn	Monterey	refined	publicity	perfect lady
Yama, Fusako	Hollywood	sleepy	sitting down	army nurse
Yamada, Betty	Redwood City	natural	smiling	actress
Yamada, Miyoji	Vacaville	bored	with Hawaiians	silent partner
Yamada, Terumi	Kingsburg	curly	running around	explorer
Yamamoto, Jimmy	Sanger	quiet	studying politics	gov. of Ariz.
Yamamoto, Kimiyo	Sanger	sweet	with Namiko	Zeigfield Folies
Yamamoto, Yoshio	Berkeley	intelligent	in class	bactericlogist
Yamaoka, Tony	Santa Barbara	gentleman	painting signs	sign painter
Yamazaki, Robert	Los Angeles	nonchalant	lying on lawn	zoo mgr.
Yasuzaki, Ruth	Pasadena	adorable	with Tom Wakida	debutante
Yokoyama, Ralph	Sanger	brainstorm	with books	professor
Yonashiro, Chiyo	Los Angeles	alluring	trying to concentrate	actress
Yoshihara, Hisako	Vacaville	poised	arguing	society reporter



# Juniors

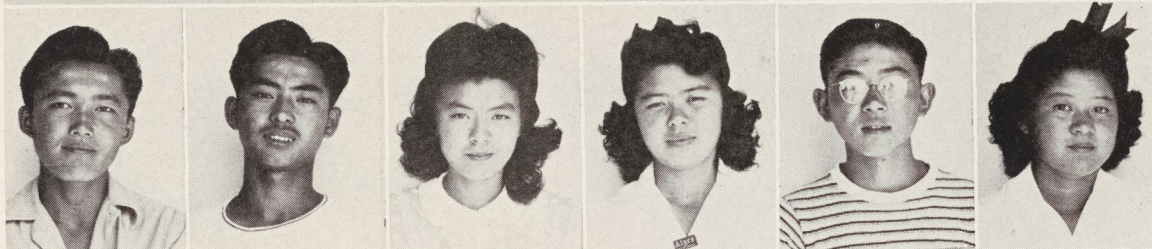


Front Row: W. Yamaguchi, T. Nagata, K. Mizumoto, Y. Nishiye, N. Yoshida, T. Tsufura. Second Row: M. Yasui, I. Miyai, J. Takemori, J. Yamaguchi, M. Oino, M. Misaki, G. Yoneda, R. Okamoto. Third Row: E. Tsugawa, Y. Yoshimura, S. Takeda, T. Yamashita, E. Shimizu, E. Tara, L. Umeda. Back Row: L. Matsunaga, M. Suechika, A. Segimoto, T. Otani, H. Yoshihara, R. Osaki, S. Takata, I. Nakagawa.

Front Row: A. Kato, H. Matsuda, W. Ando, K. Hokoda, I. Handa, J. Hiraoka, T. Komoto. Second Row: Y. Hirose, Y. Fujikawa, M. Matsuda, H. Bungo, M. Masuoka, H. Deguchi, T. Araki, H. Murayama, H. Fujishige, Y. Kaneshige. Third Row: M. Ii, M. Ichihana, E. Hatanaka, H. Imura, J. Kimura, A. Kawada, G. Fujimoto, S. Heyano, F. Inai, J. Hayashi, K. Katayama. Back Row: K. Fukuzawa, K. Aoki, Y. Kubota, K. Doi, F. Harada, T. Ebisuda, Y. Otani, H. Doi, M. Butsumyo, B. Matsumoto.



# Sophomores



Front Row: R. Nita, K. Nishimoto, H. Fujimoto, Y. Nogawa, R. Uda, T. Nishihara, G. Sano, H. Sakata, M. Okino, T. Okamoto. Second Row: T. Ryono, J. Sakai, E. Oda, T. Mori, A. Nishina, H. Sasaki, M. Muto, H. Murakami, R. Moteki, M. Nakahara, B. Nakayama. Third Row: M. Shimoide, C. Suehiro, J. Nishioka, Y. Okamoto, T. Otani, R. Nakatsuka, H. Nakagawa, Y. Nishihara, M. Shiine, J. Seiji, K. Nitasaka, R. Sakamoto, S. Oda. Back Row: C. Fujimoto, F. Sakuragi, M. Sakuragi, C. Sugimoto, T. Osumi, J. Mori, K. Ogawa, J. Nishi, Y. Sano, J. Nozumi, M. Moritaka, K. Nojiri.

Front Row: K. Kawa, T. Matsura, K. Asamoto, M. Ikeda, S. Hikido, S. Yomogida, S. Matsumoto, H. Eto, S. Yamada, G. Yagi, L. Kawahara, K. Imada, H. Hiramoto. Second Row: H. Ishii, M. Fujimoto, M. Itomura, B. Yoshikawa, A. Aragaki, T. Kawano, M. Hara, F. Kawata, M. Tsugawa, M. Egusa, N. Doi, A. Harada, F. Katayama. Third Row: Y. Takano, M. A. Hara, K. Kotsubo, B. Kobayashi, K. Tagawa, J. Yoshimi, M. Yamamoto, J. Fukuchi, A. Kawauchi, M. Kido, J. Adachi, J. Doi, M. Tanaka, K. Handa. Back Row: K. Hamaguchi, S. Hashimoto, S. Furukawa, F. Matsuhisa, T. Arakaki, A. Kouno, G. Kawahara, T. Uchiyama, K. Deguchi, T. Hata, S. Togami, N. Yasumoto, Y. Totsubo, N. Toda, T. Yasui.



# Freshmen



Front Row: R. Fukuzawa, S. Tsufura, E. Nishi, K. Toyama, M. Shimada, A. Segimoto, S. Yamashita, U. Yoneyama, K. Togami, J. Yama. Second Row: T. Yamamoto, P. Terasaki, B. Ehara, T. Sano, J. Nishi, H. Tamura, Y. Nishikawa, F. Nakasako, R. Nakahara, C. Nishikawa, L. Uchimoto. Third Row: R. Ogawa, K. Watanabe, K. Takahashi, R. Yano, C. Torii, I. Takemori, A. Yahanda, Y. Seiji, N. Yuki, M. Sugai, P. Morishige, T. Nishioka. Back Row: H. Uchiyama, N. Okamoto, L. Tanigawa, A. Murayama, M. Sakuragi, M. Yamada, H. Sasaki, N. Matsuda, F. Tara, F. Yamamoto, M. Bishari.

Front Row: J. Kimura, R. Fujioka, H. Matsuda, T. Matsunaga, W. Fujimoto, H. Kawahara, F. Hoshizaki. Second Row: Y. Matsuda, P. Kumashiro, S. Heyano, K. Kuwahara, M. Kumataka, J. Fujimoto, M. Hoshino, A. Fujimoto, Y. Masumoto. Third Row: H. Kadonaga, S. Bungo, A. Matsumoto, G. Hata, H. Matsuura, K. Kobashi, N. Ishimine, M. Masaoka, A. Fukuzawa. Back Row: P. Hirakawa, S. Mizufune, I. Iwamura, M. Hachiya, B. Kawasaki, Y. Ii, K. Kato, M. Harada, A. Tsuruda, Y. Noda.



## JUNIORS

"Two down and two to go" — that was the thought that filled the minds of the Juniors as they entered Canal High School to begin their third year. That thought was gradually overshadowed as the class became interested in its current activities. With temporary class officers at the helm, a get-acquainted party was held late in the fall. Later, with the adoption of the student body constitution, class officers were elected. The class plunged into plans to give its only class superiors, the Seniors, a prom well-worth remembering. The main problem, finance, was solved by a Junior class sponsored student body dance, and by participating in the Canal Carnival.

After the prom, the Juniors once again relaxed and returned to the thought—"Another year to go." To that thought they added, "In just one more year we too will take our places among the leaders of the world."

Their class officers were: Jesse Hiraoka, president; Helen Fujishige, vice president; Jane Hayashi, secretary; Masako Misaki, treasurer; Hitoshi Tsufura, representative; James Takemori, yell leader.

The class advisors were: Miss Lillian Bearss, Mrs. Ethel Fleming, Mr. Robert Slate, and Mr. John Brunstein.

## SOPHOMORES

This class, the second largest in school, as a result of initiative and much careful planning, has had a very active and successful year. Early in the term they held an outdoor get-together to become acquainted with each other. They held their first dance at Christmas time. To raise funds for the class, they participated in the Senior Bazaar.

Their class officers were: Joe Mori, president; Takeo Nishihara, vice president; Harriette Murakami, secretary; Alyce Kouno, treasurer; Kiyoshi Ogawa, representative; Grace Kawahara, yell leader.

The class advisors were: Miss Susie Oda, Miss Ida Otomo, Miss Nettina Strobach, Miss Mary Hughes, and Mr. Clifford Fujimoto.

## FRESHMEN

When school opened in October, young and eager Freshmen seemed lost among unfamiliar and older students. However, they soon organized, and, after selecting their officers, held a "get-together" for the purpose of getting acquainted.

On March 26, they successfully set a precedent for next year's Freshmen by presenting an assembly and a social for the entire student body. To climax the day's activity they met the faculty in a basketball game in which the Freshmen were victorious.

The most successful of their ventures was their selling "shaved ice" at the bazaar. Although it was their first experience of this kind, they were quite thrilled by the excitement and by the admiration of upper classmen and faculty members.

Their class officers were: Satoru Tsufura, president; Herbert Kawahara, vice president; Fujiko Tara, secretary; Lillian Tanigawa, treasurer; Tom Matsunaga, representative; Nobuko Ishimine, yell leader.

The class advisors were: Mrs. Dorothy Lee, Mr. Paul Shiozaki, Mr. Masao Yoshitsu, and Mr. Clyde Tyrrel.



# ACTIVITIES





## THE CARNIVAL AT CANAL

By JANE HAYASHI

What fun we all had at the Senior Bazaar!  
It surely aroused morale;  
Now, buy our first annual, it will revive  
The Carnival at Canal.

The Seniors with Joe Narasaki had booths  
That served an enormous throng;  
The barker, Iwatsubo, made his debut  
Attracting a thousand strong.

The pitching of pennies brought in copper  
coins,  
Though Bingo top honor claims;  
Our President Inokuchi bolstered us all  
While Kouno took charge of games.

With Jesse Hiraoka, Juniors helped out  
As players saw numbers reel;  
The lucky ones put forth their nickels and  
won  
While Tsufura spun the wheel.

The Juniors do wish to extend hearty thanks  
For fortunes told for the class  
By you Mr. Higgins and Miss Leggett, too  
"Fortuna" you did surpass!

The Soph'more, Joe Mori, and classmates  
called out,  
"Three balls only for one dime!  
Come ring a few squares, then you'll win a  
good prize  
Play now, don't just say, 'next time'."

I also must mention the Sophomore Sale  
Since that brought in profits, too,  
For sunflower seeds besides popcorn were  
sold;  
I hope you did buy a few.

Sat Tsufura and the young Freshmen just  
knew  
The best way to bring in mint;  
They merely sold shaved ice delighting us all  
So, everyone, take a hint!

The soda pop sold by the Lettermen's Club  
Of course, with the G.A.A.  
Was bought by us all since the sun played  
its part  
By burning throughout the day.

Besides this the Lettermen sponsored a game  
In order to test one's arm;  
For baseballs were hurled at some bottles  
of wood,  
No glass, made it safe from harm.

The Annual Staff sold us cookies and pies  
And doughnuts they had at first;  
The punch was quite sour, but none were  
concerned  
As long as it quenched their thirst.

With thanks to the teachers who helped us  
so much:  
Miss Hughes, Mrs. Fleming, too,  
And you, Mr. Sawyer we thank for the cokes,  
Success to your aid was due.

When years have gone by, you'll look back  
o'er the days  
You spent here in this locale;  
Among all the memories, you will recall  
The Carnival at Canal.



# The Constitutional Convention



CONSTITUTIONAL COMMITTEE—Left to right: S. Hata, G. Iwatsubo, H. Shirakawa, K. Hirasuna, E. Mori, H. Fujishige, J. Hiraoka, R. Inokuchi.

IN introducing the trailblazers of Canal High School, the Constitutional Committee, we might say that it was through their efforts and laborious struggle that we have the present student government. The first student representative government established in school, founded the Constitutional Convention comprised of thirty-four delegates, two representing each respective homeroom. The Convention elected a committee which consisted of eight delegates to write the school constitution.

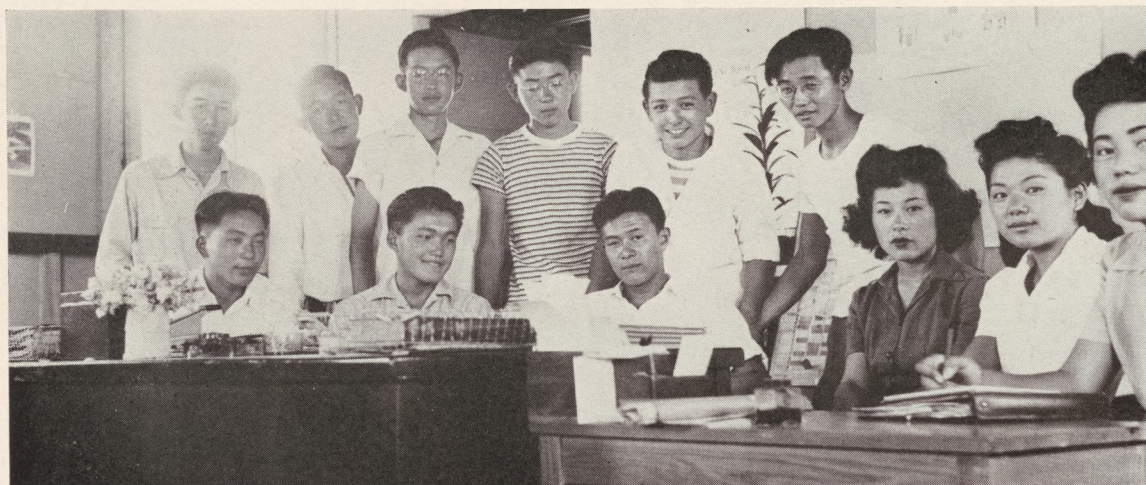
Under the energizing chairmanship of George Iwatsubo, the committee, after two months of continuous efforts, completed a successful document. It was drawn up on the bases of various rules and orders of leading Interstate High School Constitutions. This constitution was presented for ratification to both the Convention and the Student Body. Thoroughly discussed and studied, this document was ratified by an overwhelming majority. The Student Body pays tribute and honors to this Committee which established the foundation for a better school government and better student activities.



STUDENT BODY OFFICERS—Richard Inokuchi, president; Satoshi Hata, vice president; Wilson Kumataka, treasurer; Emi Mori, secretary; George Iwatsubo, sergeant-at-arms; Natsu Ikeda, chairman of publications; Haruko Ishimine, yell leader.



# Student Council



STUDENT COUNCIL—Front Row: William Seiji, senior representative; Joe Mori, sophomore president; Richard Inokuchi, president; Natsu Ikeda, chairman of publications; Haruko Ishimine, yell leader; and Emi Mori, secretary. Back Row: Jesse Hiraoka, junior president; Joseph Narasaki, senior president; Hitoshi Tsufura, junior representative; Kiyoshi Ogawa, sophomore representative; Satoshi Hata, vic president; George Iwatsubo, sergeant-at-arms. (Not pictured: Wilson Kumataka, treasurer; Tommy Matsunaga, freshmen representative; Satoru Tsufura, freshmen president.)

**T**HE Student Council, the governing body of the Associated students, was the group which had been responsible for developing and maintaining efficient student organization.

Under the Constitution, the Council was required to meet every Tuesday. However it was often necessary to call special meetings to complete discussions and plans for the activities. Into the Council's hands fell the responsibility of the success of all student affairs.

Other duties of the Council were: approve all student finances, approve all school awards, fill vacancies in student body offices, approve resignations of officers, and conduct the nomination and election of student body officers for the following year.

Membership in the Council consisted of all student body officers, all class presidents, and one representative from each class. The student body president and secretary were the chairman and secretary of the council respectively.

Much of the progress this Council made was due to the guidance received from Mrs. Helen Yeaton and Mr. Clifford Fujimoto, advisors.



RICHARD INOKUCHI  
Student Body President



# Rivulet



RIVULET STAFF—Seated left to right: Mary Mizufune, calendar ed.; Mitsy Muto, assistant typist; Yuico Otani, typist; Jane Hayashi, assistant ed.; Yayoi Nishikawa, editor; Lily Fujimoto, sr. activities ed.; Kazuko Goto, art ed.; Pearl Kumashiro, assistant art ed. Standing, left to right: George Iwatsubo, organization ed.; Emi Mori, assistant literary ed.; Richard Inokuchi, assistant organization ed.; Helen Tanigawa, literary ed.; Natsu Ikeda, chairman of publications; Ben Matsui, boys' sport ed.; and Mieko Suehiro, girls' sport ed. (Not pictured: Karen Hirasuna, class ed.; Dick Ikeda, assistant art director; Kenneth Aoki, asst. sport ed.)

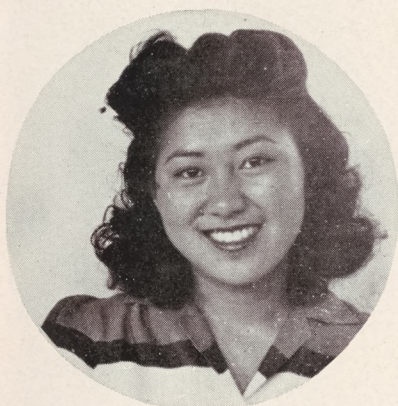
**T**HE Rivulet Staff has endeavored to record the progress of Canal High students from the first momentous registration day to the long-awaited senior graduation.

The staff in its efforts to do this has encountered many difficulties: the lack of cameras, the shortage of film, and the limited time in which to work. Unfortunately, it has been impossible to secure films for the number of pictures that were desired.

The main problem that had to be faced was finance. It was finally solved through a benefit movie, a dance, and donations from various clubs.

Many pleasures accompanied the hard work. Mr. McVey, the cameraman, caught the students in many humorous situations.

With the untiring efforts and splendid cooperation of the staff, the Rivulet is complete. It is now presented to you so that in years to come you may turn the pages of this book and have fond memories of your activities here.



YAYOI NISHIKAWA  
Editor



# Hi-Tide

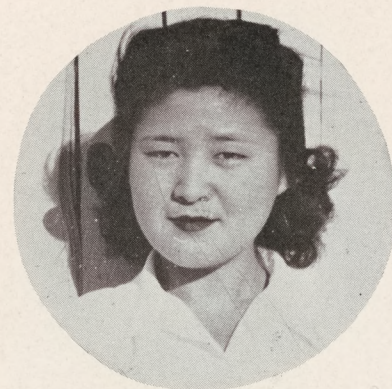


THE HI-TIDE STAFF—Front Row: Natsu Ikeda, chairman of publications; Gladys Yoneda, editor; Haruko Ishimine, girls' sports editor; Irene Seiki, typist; Mary Mizufune, reporter; Rose Hara, reporter; Mitsy Muto, head typist; Lily Fujimoto, activities editor; Lily Umeda, feature editor; Helen Fujishige, reporter. Second Row: Jesse Hiraoka, boys' sports editor; George Iwatsubo, make-up editor; Richard Inokuchi, associate editor; Rose Hagihara, reporter; Ruthy Osaki, reporter; Helen Sachi Doi, reporter; Rose Ito, reporter; Alyce Kawada, reporter. Back Row: Ben Matsui, head technician; Tony Yamaoka, technician; Satoshi Hata, reporter; Harry Kouno, technician.

RETAINING memories of pleasure derived from the newspapers of former schools, the students' demands for a similar one here were persistent and imperative. From this flood of requests was born the Hi-Tide.

Making its initial appearance April 2, 1943, the Hi-Tide has served its purpose as the students' newspaper. Though greatly handicapped by the lack of a journalism class and instructor, the staff has worked diligently to make this semi-monthly publication efficient and informative. This was an experiment, a new venture for many of the staff.

By publishing records of scholastic achievement, news of students and faculty, reports on the athletic program, and projects of the various departments of school, the Hi-Tide has promoted efficiency and co-operation in Canal High School.



GLADYS YONEDA  
Editor



UPON receipt of Charter No. 2712 on May 17, 1943, Canal High School organized its chapter of the National Honor Society of Secondary Schools.

The object of this Honor Society is to create an enthusiasm for scholarship, to stimulate a desire to render service, to promote leadership, and to encourage the development of character. The membership is based on scholarship, service, leadership, and character. The faculty participated in the final selection of the members.

The charter officers were: Wilson Kumataka, president; Hisako Yoshihara, vice president; and Mary Mizufune, secretary-treasurer. The committee working with the Honor Society was as follows: Principal J. P. McVey, Lillian Bearss, chairman; Masao Yoshitsu, J. C. Brunstein, and Lucille Peddy.

The following students have received a total of three or more Honor Roll Cards:

#### SENIORS

Ben Ehara  
Lily Fujimoto  
Kazue Harada  
Roy Harada  
Natsu Ikeda  
Richard Hiroshi Inokuchi  
Robert Iwakami  
Jimmy Kurata  
Mary Mizufune  
Emi Mori  
Yayoi Nishikawa  
Lotus Nishimura  
Mary Nozumi  
George Ogino  
Taeko Ohara  
Masako Okada  
Kiyoto Shinmoto  
Minoru Shinmoto  
Harriett Shirakawa  
Mieko Suehiro  
Helen Tanigawa  
Roy Torii  
Jimmy Yamamoto  
Hisako Yoshihara

#### SOPHOMORES

Toshiko Arakaki  
Kazuko Deguchi  
Nancy Doi  
Mutsumi Egusa  
Susie Furukawa  
Aiko Harada  
Kinji Imada  
Michiko Itomura  
Alyce Kouno  
Roy Kuramoto  
Joe Mori  
Ruth Moteki  
Ruby Nakatsuka  
Takeo Nishihara  
Jitsuko Nishioka  
Yoko Okamoto  
May Shimoide  
Hisako Sasaki  
Nobuko Toda  
Michiye Yamamoto  
Takako Uchiyama  
Yoshio Yamada

#### JUNIORS

Kenzo Aoki  
Sachiko Helen Doi  
Helen Fujishige  
Fumie Harada  
Evelyn Hatanaka  
Jane Hayashi  
Jesse Hiraoka  
Ted Komoto  
Andrew Segimoto  
Eloise Shimizu  
Harry Takata  
Emiko Tara  
Hitoshi Tsufura  
Frank Watanabe  
Teruko Yamashita  
Gladys Yoneda

#### FRESHMEN

Sam Bungo  
Annabelle Fukuzawa  
Herbert Kawahara  
Kikuyo Kuwahara  
Midori Kumataka  
Helen Matsuura  
Sumiko Mizufune  
Haruko Sasaki  
Arthur Segimoto  
Lillian Tanigawa  
Fujiko Tara  
Ichiro Terasaki  
Charles Torii  
Satoru Tsufura  
Laura Uchimoto

## National Honor Society



### CHARTER MEMBERS

#### SENIORS

Kimi Arakaki  
Rose Hara  
Roy Harada  
Satoshi Hata  
Karen Hirasuna  
Natsu Ikeda  
Haruko Ishimine

Ted Kubota  
Wilson Kumataka  
Mary Mizufune  
Emi Mori  
Yayoi Nishikawa  
Merry Nozumi  
Jimi Oda

Kiyoto Shinmoto  
Minoru Shinmoto  
Helen Tanigawa  
Betty Totsubo  
Betty Yamada  
Yoshio Yamamoto  
Hisako Yoshihara

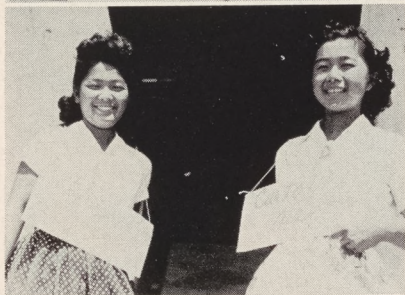
#### JUNIORS

Helen Doi  
Helen Fujishige  
Jane Hayashi  
Jesse Hiraoka  
Ted Komoto  
Mary Oino  
Eloise Shimizu  
Harry Takata  
Hitoshi Tsufura  
Lily Umeda  
Gladys Yoneda

### CANAL HONOR ROLL







# Calendar

- |          |  |
|----------|--|
| October  | 12—First day of school<br>26—Class meetings—Temporary officers   |
| November | 3—Constitutional Convention<br>6—Sophomore wiener bake<br>6—First Student Body Rally<br>7—First football game<br>Varsity vs. Butte—at Canal<br>Lightweight vs. Butte—at Butte<br>11—Armistice Day<br>Parade to administration building<br>Flag ceremony<br>19—F.F.A. initiation and wiener bake<br>20—First student jam session<br>20—Football game at Butte<br>28—Senior Class Social |
| December | 2—Mr. McVey's arrival<br>10—Freshman Social<br>12—Junior Class Social<br>24—Xmas Concert<br>25—January 6—Xmas vacation<br>28—Senior Social Dance   |
| January  | 9—Basketball game with Coolidge<br>25—Constitution adopted   |
| February | 1—Student Body Officers' Election<br>3—Movie on Health<br>4—Benefit movie—"Road to Zanzibar"<br>13—G.A.A. Social<br>15—Semester Exam Week<br>19—Senior Social<br>26—Installation Dance   |
| March    | 16—Letterman's Club Social<br>26—Freshman Day  |
| April    | 3—Publication Dance<br>16—Senior Day<br>17-18—Bazaar<br>21—Bunny Session<br>26-27—Easter vacation  |
| May      | 3-7—Boys' and Girls' Week<br>5—City Government Day<br>6—Panel discussion on "Relocation"<br>15—"The Great American Broadcast"  |
| June     | 5—Junior-Senior Prom<br>12—Senior Banquet<br>19—Farewell Social<br>20—Baccalaureate Services<br>25—Commencement  |



# *Music*

Orchestra



Glee Club



Band





# Clubs



F  
O  
R  
E  
N  
S  
I  
C



S  
C  
I  
E  
N  
C  
E



A  
M  
E  
R  
I  
C  
A  
N  
O  
S  
  
L  
O  
S  
P  
A  
N  
I  
O  
S



# *Clubs*

## FORENSIC CLUB

One of the first official organizations of Canal High was the Forensic Club, composed of members determined not only to develop their own talents in public speaking and drama, but in furthering similar interests among all students.

Among the activities of the group was a debate on the question, Resolved: "That India Be Given Her Independence Now." Those who participated in the debate were: Jane Hayashi, Toy Murayama, Emi Mori, Hisako Yoshihara, Jesse Hiraoka, and George Iwatsubo.

Journeying to Butte High, the Canal team captured two out of three possible decisions and again in the return debate sponsored by the University Club, the debators successfully defended their title. Also, an assembly was presented to the student body. Thus, they made a worthwhile contribution to the activities of our high school.

## SCIENCE CLUB

During the many centuries in the struggle of mankind, science was a deciding factor in the modernistic advancement of this world. With this in mind, the Science Club was formed by students who realized the value of a good and sound knowledge of the sciences. When it was first organized, it made little impression on the students, for they did not fully realize the value of the club.

## LOS PAN AMERICANOS

The primary and fundamental purpose of this body is to create better relationship between our country and the other Pan American countries by trying to understand their cultural, political, social, and economic problems.

Two of the highlights of the club were the Christmas celebration, featuring the Mexican tradition of breaking the pinata, and the Pan American Day celebration.

The officers of this organization were as follows: Hitoshi Tsufura, president; Helen Doi, vice president; Eloise Shimizu, secretary; Kenneth Aoki, treasurer. Mrs. Helen Yeaton was their advisor.





1. Waiting for the boss.
2. Take a letter, Miss Hagihara.
3. Everyone working but Yayoi.
4. Meeting the deadline.
5. Chief of Police, Ed Inouye.
6. Aaaaah — the scenery!
7. The idea is to work, Harriett.
8. Oh, those Pepsodent smiles!
9. Murals by the art class.
10. Sneaking another truck!
11. The Lonely Hearts Club.
12. Future Florence Nightingales.
13. Hoffman and Inokuchi, Inc.
14. "Okay, tonight at eight o'clock."
15. Melody of umbrellas.

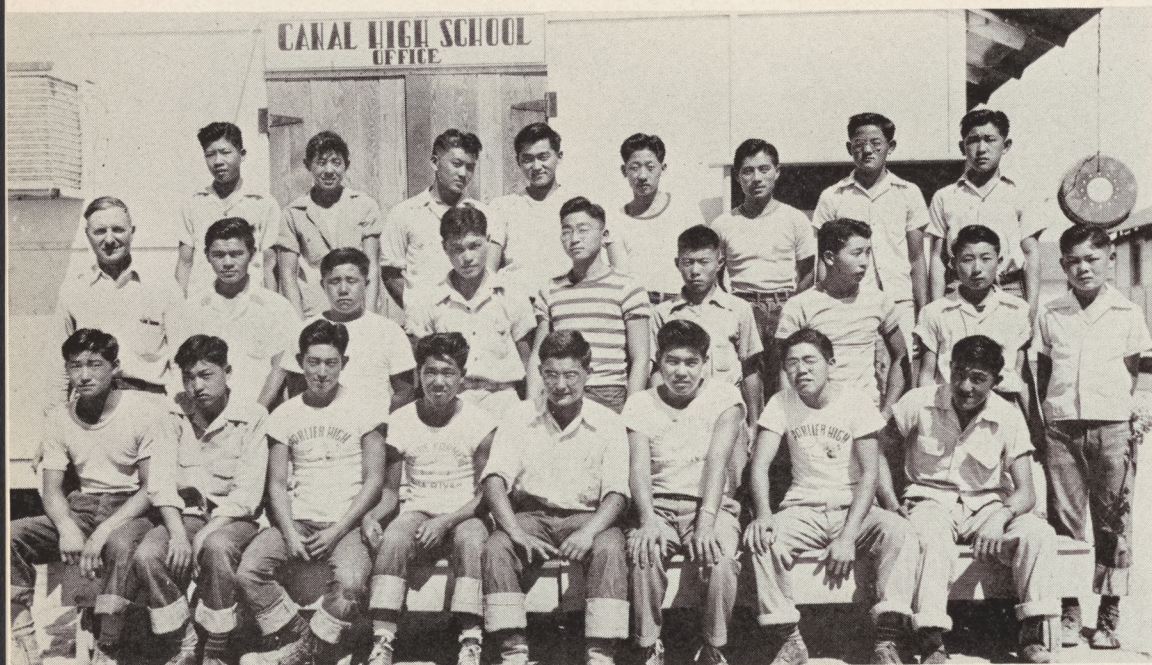




1. We-uns got second prize, yassuh!
2. First prize — The Trio
3. Camera shy, boys?
4. Where's your costume, Miss Bearss?
5. What a nightmare!
6. Gala Senior Day
7. Keep that Arizona sun away!
8. Annual Benefit Movie
9. Hey Joel! Is she cute?
10. Between the bells.
11. Queen of the Cactus Bowl
12. Eat them Wheaties!
13. Leg Art
14. Blow! Iwakami, Blow!
15. Let Mommie do it
16. Oh-oh, your hem is uneven
17. Winners of the Popular Co-ed Contest
18. Winners of essay contest.
19. Your feet's too big!
20. An art enthusiast
- 21.



# Future Farmers of America



Front Row: F. Togami, H. Hirabayashi, R. Koda, J. Omori, T. Kubota, T. Tanouye, G. Tsuboi, K. Ichihana.

Second Row: Mr. Tyrrel, T. Yamamoto, T. Aoki, K. Yoshimoto, M. Doi, F. Hoshizaki, F. Katayama, T. Matsuura, T. Sano.

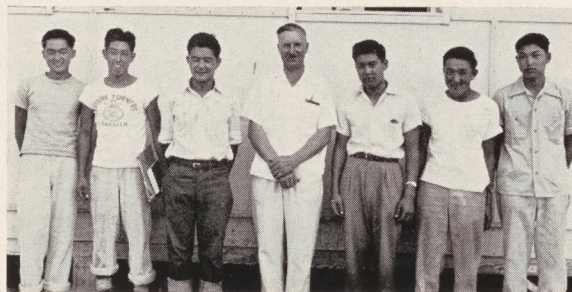
Back Row: B. Yamataka, S. Tanouye, B. Koda, Y. Hamasaki, T. Katsura, M. Takata, H. Heyano, W. Fujimoto.

THE Canal Chapter of Future Farmers of America, under the supervision of Mr. Clyde Tyrrel, Agriculture Advisor at Canal High School, was organized with an enrollment of 36 members.

The Future Farmer degree-holders were initiated during the first semester, and the Greenhand degree-holders were initiated during the second semester. The occasion of each initiation was a successful "get-together" with refreshments and fun as well as serious business. The chapter participated in the Thanksgiving Carnival by selling soda pop and by managing the basketball concession. Field trips were made to Sacaton and to the Rivers' dairy and hog farm. Another project was the Future Farmer Victory Garden planted at El Rancho No. 47. Twenty acres of various vegetables were planted for community use.

For their class project Tom Yamamoto, Tom Tanouye, Frank Togami, Yutaka Hamasaki, and Bob Kozuki have raised feeder pigs.

F.F.A. OFFICERS — Y. Hamasaki, R. Koda, T. Kubota, Mr. Tyrrel, T. Tanouye, K. Ichihana, H. Hirabayashi.





# SPORTS





## THE GREAT TEAM

Our fighting spirit is undying  
On foreign fields or home;  
Team and rooters on each other relying  
To bring the bacon home.

The two-ton tackle on the eleven,  
The lanky center, six feet seven,  
That blue and gold streak that just went by,  
He's a ten flat man — with champions he'll vie;  
For the school they'll man their battle stations,  
They'll guard the goal like a mighty nation.

The screaming damsel in the first row of bleachers,  
The wriggley cheerleaders, what strange creatures!  
The trembling girl when a fly comes her way,  
The dashing young hero who (for her) saves the day,  
For the school they'll man their battle stations,  
They'll guard the goal like a mighty nation.

Our fighting spirit is undying  
On foreign fields or home;  
Team and rooters on each other relying  
To bring the bacon home.

—Kinji Imada



## G. A. A.



THE Girls' Athletic Association was formed to promote good sportsmanship and friendliness in all sports.

The girls went on hikes and participated in inter-class sports, both major and minor. They have also sponsored several movies with the aid of the Lettermen's Club to raise funds for purchasing equipment.

Any girl who had earned 250 points was eligible for membership in the club. One hundred points were given for every major sport participated in, and the minor sports were worked by the ladder system.

The drill team, also advised by Miss Hughes, appeared before the public twice, on Thanksgiving and New Year's.



G.A.A. OFFICERS—Harriett Shirakawa, president; Emi Mori, vice president; Hisako Yoshihara, secretary; Haruko Ishimine, treasurer; Miss Mary Hughes, advisor.



# G. A. A.



## Sophomore Basketball Champs

Front Row: Grace Kawahara, Harriette Murakami, Jane Seiji.

Back Row: Edith Oda, Carole Sugimoto, Alyce Kouno, Michiko Itomura.



## Senior Basketball Champs

Front Row: Mary Honda, Helen Tanigawa, Jennie Takayama, Mieko Suehiro.

Back Row: Clara Togami, Mayme Hamakata, Hisako Yoshihara, Emi Mori.



## Sophomore Baseball Champs

Front Row: Yosh Takano, Grace Kawahara, Chiyoko Suehiro, Kumiko Handa, Kasumi Tagawa.

Back Row: Edith Oda, Alyce Kouno, Carole Sugimoto, Mary Fujimoto, Teri Kawano, Mutsumi Egusa, Teruye Hata.



## Senior Speedball Champs

Front Row: Mary Honda, Hisako Yoshihara, Helen Tanigawa, Setsuko Heyano, Janet Fujimoto.

Back Row: Julia Seiji, Emi Mori, Harriett Shirakawa, Rose Hagihara, Yukiko Tanaka, May Sano, Alice Hara, Mayme Hamakata, Haruko Ishimine.



## Officers and Sports Heads

Front Row: Mary Honda, Hisako Yoshihara, Emi Mori, Hisaye Yoshihara, Julia Seiji, Harriett Shirakawa, Haruko Ishimine.



# Sports

Majorettes



Yell Leaders



Drill Team





# Lettermen's Club



Front Row: K. Aoki, I. Handa, B. Matsui, J. Takemori, J. Mori, J. Yamaguchi, H. Oto.

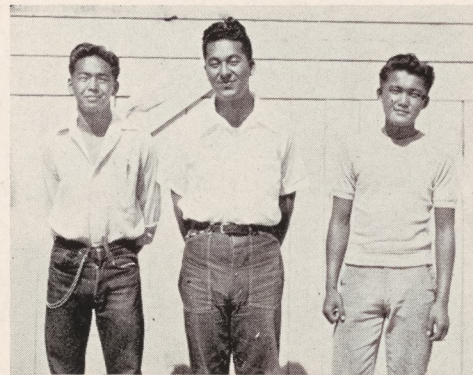
Back Row: S. Yamashita, H. Shinmoto, R. Iwakami, K. Hirata, T. Muto, G. Tamori, M. Sano, S. Ichiki, H. Kouno.

THE Lettermen's Club was organized under the direction of Coach Domoto for the purpose of emphasizing sportsmanship and cooperating with the student body and the athletic department.

The club took part in numerous events. It sponsored the athletic department's benefit movie and cooperated with the senior class to make the bazaar a social and financial success.

Each student, who earned a letter was eligible for membership in the club. Through the efforts of the active members, the club raised considerable money which paid for part of the expense of the sweaters and athletic pins.

The advisors were Coaches Domoto and Maeda.



OFFICERS: George Tamori, Robert Iwakami, Joe Mori.



# Varsity Football

Front Row: J. Fujii, T. Muto, M. Yoshikawa, G. Tamori, D. Ikeda, J. Mori, M. Sano, Coach Domoto.

Back Row: Mgr. K. Nishimoto, Y. Yokogawa, T. Wakida, M. Sano, H. Sano, R. Iwakami, S. Ichiki, H. Shinmoto, H. Oto, I. Hirose, T. Aoki.



## VARSITY FOOTBALL SCORES

Canal High 6	Butte 0	Canal High 0	Butte 0
Canal High 0	Butte 0	Canal High 0	Cyclones 6
Canal High 13	Butte 0	Canal High 0	Solons 0
Canal High 0	Crimson Tide 0		

**L**ED by the capable Co-Captains Herky Shinmoto and Minoru Sano, the Canal High Varsity Football Team participated in a season that will be unforgettable.

Inexperienced but hard fighting Bob Iwakami, deceptive George Tamori, Hiroshi Oto and Iwao Hirose also sparked the team to victories.

Although handicapped by many things, the team emerged victorious over an evenly matched eleven from Butte.

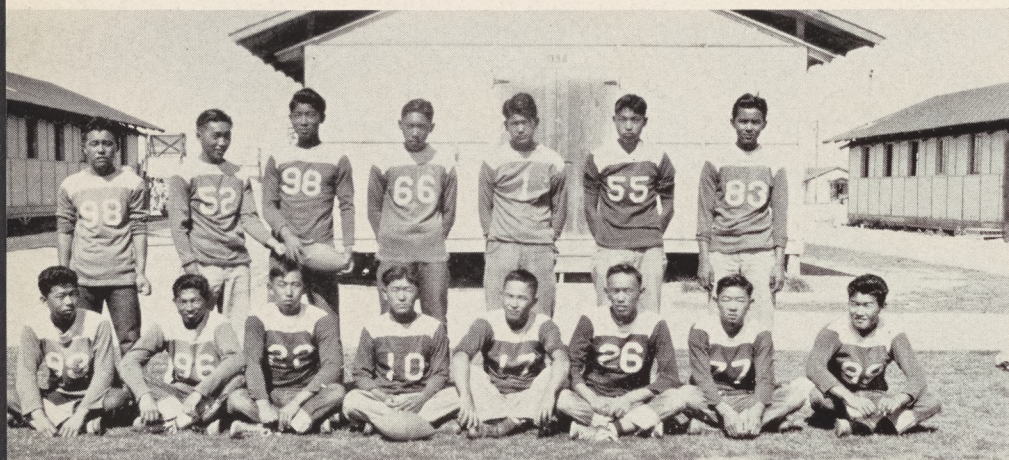
The other opponents were composed of experienced players who had graduated from high school. They, with their advantage of experience, gave the High School Bears keen competition.

Coach George Domoto is to be highly praised for his success in developing these players for future athletic contests and is to be admired for installing in his squad the ethics of true sportsmanship.





# Lightweight Football



Front Row: H. Kouno, J. Murakami, A. Handa, S. Yamashita, G. Ogino, B. Matsui, H. Ogawa, M. Ohara.

Back Row: K. Aoki, T. Nagata, J. Yamaguchi, K. Hirata, H. Murayama, H. Hirabayashi, G. Fujimoto.

## LIGHTWEIGHT FOOTBALL

Canal High.....	0	Royal Trojans	14
Canal High.....	0	Block 10 .....	0
Canal High.....	6	Solon Jrs. ....	7
Canal High.....	0	Butte .....	0

THE fighting "B" team, although coming out on the short end of the score, deserves much credit for their spirit and untiring effort. Harry Osaki is to be complimented upon his fine handling of the team and the development of a hard fighting eleven with fine sportsmanship.

The lack of equipment played its role as a handicap. Nevertheless, we feel that, because of the cooperation on this team, those who are leaving us are better prepared for their participation in other schools. And those who may stay for awhile will be ready to assume more responsibility and achieve more success in future gridiron contests.





# Varsity Basketball

Front Row: H. Sano, G. Tamori,  
T. Muto, J. Mori, H. Murayama,  
H. Oto.

Back Row: Mgr. T. Yamada, K.  
Yoshimoto, T. Ryono, T. Oto,  
J. Hamaguchi, B. Kozuki, H.  
Shinmoto.



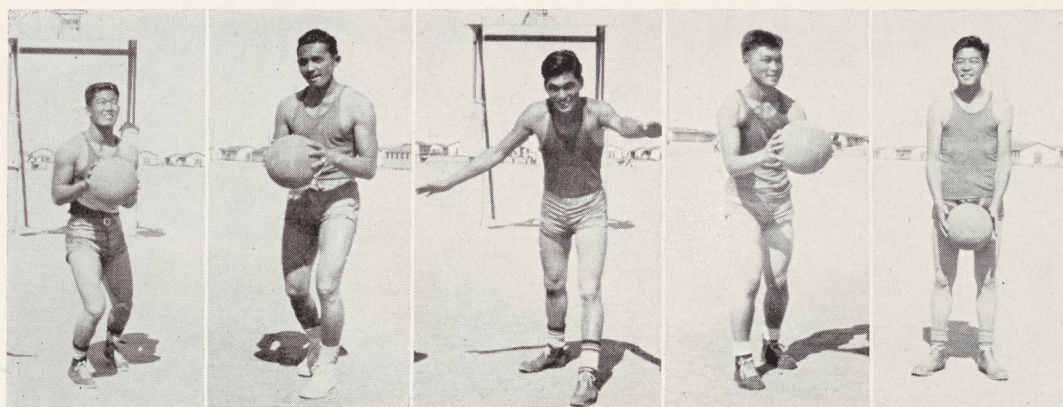
## SCORES

Canal Hi.....27	Blockheads .....28	Canal Hi.....25	Roughriders .....40
Canal Hi.....39	Vikings .....29	Canal Hi.....40	Rockets .....39
Canal Hi.....38	Cyclones .....29	Canal Hi.....40	Casa Grande .....17
Canal Hi.....48	Raiders .....36	Canal Hi.....18	Coolidge .....22
Canal Hi.....35	Cards .....34	Canal Hi.....30	Mesa Hi .....25
	Canal Hi.....33	Butte .....13	

## VARSITY BASKETBALL

**C**O-COACHES Seichi Yamamoto and George Domoto put forth a varsity quintet that established an enviable record during the season with eight victories and three losses.

Considered a mediocre team at the beginning of the season, the Golden Bears blossomed into one of the strongest teams, proving that they had been underrated by upsetting three highly favored community teams.





# Grizzlies



Front Row: Mgr. R. Inokuchi, T. Nagata, S. Yamada, J. Kimura, Y. Yamamoto, E. Yamamoto.

Back Row: I. Hirose, N. Yoshida, K. Tsuboi, H. Tsufura, M. Doi, M. Shinmoto, G. Okajima, Coach Dick Nishi.

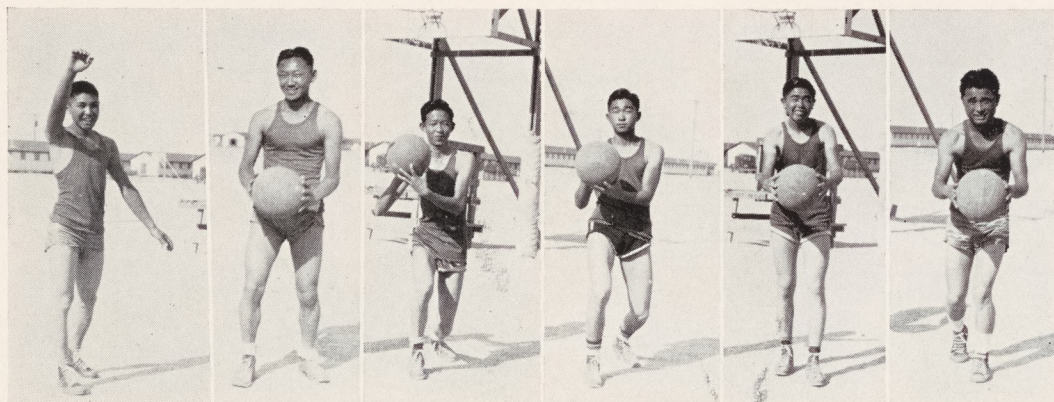
## SCORES

Grizzlies.....32	Butte .....22	Grizzlies.....29	Buckaroo .....21
Grizzlies.....12	Card Jrs. ....23	Grizzlies.....46	Blk. Heads.....18
Grizzlies.....38	Esquires .....27	Grizzlies.....27	Ochis .....21
Grizzlies.....36	Jeeps .....24	Grizzlies.....19	Dukes .....16
"B" Class Crown Championship Play-Off			
Grizzlies.....29	Maharajahs .....30		

**C**OACH Dick Nishi's Grizzlies showed their supremacy on the basketball court by capturing the Western Cage Crown.

An opening loss merely strengthened the moral of the Grizzlies. They chalked up a seven game winning streak broken finally in the Community "B" Class Championship play-off by a one point loss.

Canal High School is proud of their Grizzly team and wish to congratulate each member of the team.



Shoji Yamada, guard; Minoru Shimoto, guard; Hitos'i Tsufura, center; Minoru Doi, center; Kazuo Tsuboi, forward; Iwao Hirose, forward.



# Bruins

Front Row: K. Aoki, T. Komoto,  
H. Kouno, B. Matsui, J. Take-  
mori, J. Murakami.

Back Row: R. Koda, A. Handa,  
Mgr. G. Eto, Y. Nishiuye,  
K. Fukuzawa.

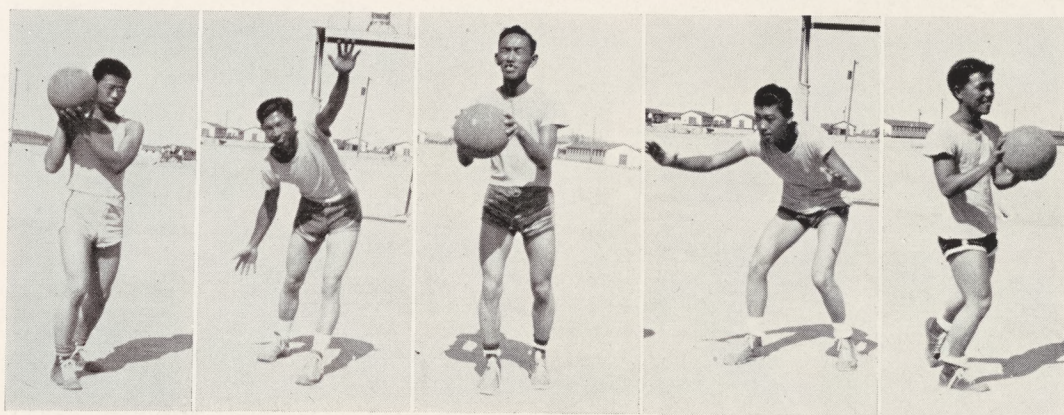


## BRUINS BASKETBALL SCORES

Bruins.....23	Blk. 10 .....24	Bruins.....40	Blk. 6 .....20
Bruins.....20	Maharajah .....30	Bruins.....48	Poop-Outs .....32
Bruins.....40	Blk. 25 .....10	Bruins.....47	Butte .....17
Bruins.....32	Esquires .....16	Bruins.....19	Mesa .....18
Bruins.....24	Broncos .....19	Bruins.....24	Coolidge .....18

**A**FTER dropping their first two games, the Eastern Division Bruins piloted by Goro Maeda, retaliated with four consecutive league victories to wind up their season in second place.

The overpowering of Mesa, Coolidge and Butte, added to those five league wins, presented a record of eight consecutive victories; thus climaxing an initial cage season of success.





# Baseball



Front Row: H. Tsuji, A. Segimoto, J. Murakami, K. Aoki, G. Tamori, M. Terada, E. Nakamura, H. Sano, H. Shinmoto, F. Togami.

Back Row: Mgr. G. Ogino, H. Hiromoto, H. Kouno, H. Tsufura, G. Inouye, T. Muto, J. Hamaguchi, J. Yamamoto, A. Handa, Coach Maeda.

## BASEBALL SCORES

Canal High..... 1	Casa Grande 14	Canal High..... 9	Block 26 ..... 4
Canal High..... 6	Mesa ..... 2	Canal High..... 5	Old Timers .... 0
Canal High..... 0	N. Phoenix ..... 6	Canal High.....10	Ochis ..... 1

THE green but determined "Casaba Nine" team, coached by Goro Maeda, have piled up an enviable record. Goro, although handicapped by not knowing the ability of his players, has produced a hard-fighting team. Through the assistance of Miss Hughes, Mr. Higgins, and Mr. Sawyer, the team was fortunate enough to visit Phoenix and Mesa. Led by Captain Ed Nakamura, they have thus far chalked up wins over three opponents. Right now, the team will be hit hard by the graduation of several players. This year's organization has kept us busy and fit. But we hope that we will be resettled by the time baseball rolls around again to our Alma Mater.





# Snapshots



1. Mow 'em down, boys.
2. A gentleman? Or is it her umbrella?
3. Knock a home run, Grace!
4. Canal—19; Butte.—0
5. What'll it be, a ball or strike?
6. Man! Look at it go!
7. Open your eyes and strike, May!
8. Look out, below! Here I come!
9. Where's the ball?
10. Floating on a breeze.
11. How does it feel to be the Initiates?
12. C-a-n-a-l! Canal! Canal! Rah!
13. Oh, your tummie . . . .
14. The Sophomore spirit.
15. The pride of the Drill Team.
16. Now girls, you may go home! (wash up)!



# To The Volunteers



THE future security of our people has been challenged. We have seen our fellow citizens march off to the defense of America.

Relocated here in desolate Arizona, without questioning the right or wrong of the Pacific coast mass evacuation, our hearts burned only with the fierce glow of patriotism to serve our country in this time of acute distress. Our door to the opportunity of service to America was finally opened, and you were the first to gladly offer your time, your service, your courage, and your lives if necessary, for a United Nation's total war effort.

It is the people, not any one race, that makes this country great. As individuals, each of you has a task to perform for the welfare of mankind. Upon your shoulders lies the responsibility of establishing a foundation that will insure security for American citizens of Japanese ancestry in a post war America.

Many will follow in your footsteps, but their deeds will be marked by yours. We, the Associated Students of Canal High School, salute you the first volunteer group of the Japanese American combat unit.



## *Appreciation*

**M**Y deep appreciation to our principal, Mr. J. P. McVey, who really made this book possible; to the members of the faculty whose suggestions and kind assistance proved invaluable.

My acknowledgements for the generous donations received from various classes and clubs in school and from the Parent-Teachers Association; to the Community Activities Section for granting us a benefit movie.

My sincere thanks to the members of my staff whose diligent efforts and willingness produced this book within so limited a time; and to all the students who took an interest in this book, and wholeheartedly supported our publication.

These I tender with the deepest feeling of gratitude.

Yayoi Nishikawa, Editor.



*Compliments of*

Gila River Co-operative  
Enterprises, Inc.

Rivers, Arizona

∴

Your Patronage Is Appreciated



