

H 1.01.

67/14
C

11 1.01

CENTRAL UTAH

Date of Opening: Sept. 11, 1942
Date of Completed pop.: Oct. 28, 1942

Size: 7948 Issei (3242 Issei, 4206 Nisei
Issei 41% Nisei 59%

Origin: S.F. Bay area; Los Angeles
Assembly Centers: Santa Anita, Tanforan

Size of Project Staff and ratio to evacuees, as of Feb. 1 (av. 60):
(139 indefinite) 155 (16 tempo) 1 to 51.2

Turnover of P. D. 1
Housing-Occupancy per apt. (Av. 4.09): 3.66
Early conditions: Next worst to Gila. Chaotic. No sewage or lights.
Serious dust cond.

Mess: Some mess hall crowding at first but not as bad as other projects.

Clothing payments: good
Rate of application for leave clearance: Fast (liberal with shopping passes)

Caste developments (staff) remarkable lack.

#employed in center (Dec. 26) Av. 46%: 3,816 48%

Schools: No crowding. Medium

Att. of neighboring community: Very friendly

U. S. Department of the Interior
WAR RELOCATION AUTHORITY
Washington

March 12, 1945

Memorandum to Washington Staff

Code D

A splendid dramatization of Sgt. Ben Kuroki's wartime experiences will be rebroadcast by station WOL in Washington at 11:30 P. M. EWT, Tuesday March 13.

I am confident that you and your friends, regardless of their interest in WRA, will enjoy this excellent broadcast.

D. S. Meyer
Director

Sept 11, 1942 Today open
apparently dated Oct 1 - 1942 To March 1 - 42

- 1 -

623 3/45

H 10/3

The Project consists of approximately 570 buildings located in an area approximately three fourths of a mile square. The buildings are of frame and tar paper construction, with gypsum board inner wall lining, the roofs are covered with tar paper, floors of kitchens, dining halls, laundries, heater rooms, latrines and warehouses are of concrete. Chimneys are generally constructed of terra cotta pipe with a metal lining eight inches in diameter. In most cases two stoves are connected to one chimney, each stove having a connecting stove pipe six inches in diameter. The stove chimneys are vented through the roof and fitted with a standard ventilated metal roof jack. Kitchen ranges are vented through the roof with an eight inch metal chimney, fitted with a standard ventilated metal roof jack. Ventilating insulating thimbles are installed on these chimneys where they pass through the roof. Hoods constructed of sheet asbestos are installed over the kitchen ranges. These are ventilated through the roof with eight inch metal pipes. Auxiliary water heaters are installed in the kitchens, adjacent to the ranges and provided with chimney vents connected to that from the nearest range. Ventilating insulation is installed to pro-

test the wall from heat exposure from these heaters.

A large number of the terra cotta chimneys are cracked due to the action of heat, and are rapidly becoming a fire hazard and a hazard to occupants of these buildings as well through a probability of broken pipe falling.

A number of stoves in the warehouses are installed by running the stove chimney through windows and side walls of buildings. These are sub-Standard installations which should be corrected by putting in a standard type roof-jack and running the chimney of these stoves through the roof.

Installations of stoves in the Tire and Motor Repair Shops are below standard in that improper and defective chimney connections are made and proper insulation against heat between stoves and walls and partitions have not been made.

A number of oil stoves have been installed for use in the Administration Building area. The chimneys of these are improperly connected through windows. It is suggested that the standard chimney installation previously referred to be provided here. A careless practice of filling the tanks of these stoves from improperly designed

fuel containers has resulted in much fuel being spilled on the floor around the stoves. This practice produces a fire hazard of high degree; and should be corrected by the use of containers equipped with a flexible discharge spout and by the use of greater care by the employees doing this work.

WATER SUPPLY

Water for the Project is received from three deep wells located at the east side of the Area. These wells average about 600 feet deep, each having a nine foot water level from the top and having a draw down respectively:

Well No. 4	-	22ft.
Well No. 5	-	19ft.
Well No. 6	-	34ft.

Well No. 4 is powered with a 3 phase 440 Volt A.C. 40 H.P. deep well type Lane & Bowler pump, capacity 800GPM.

Well No. 5 - 440 Volt A.C. 30 H.P. deep well type Pomona pump, capacity 600 GPM.

Well No. 6 - Equipped with a deep well turbine Lane & Bowler, dual drive head, powered with a 50 H.P. case gasoline tractor and a 30 H.P., 3 phase 440 Volt A.C. motor. This well is used as a standby.

There is no fuel supply for the tractor at this well, other than that carried in the attached fuel tank. The

exhaust is carried to the outside through the wall of the pump house.

Water storage is provided by four elevated tanks located near the wells, totaling 500,000 gallons. The elevation of the water column is 100 ft., providing a static pressure of approximately 43 lbs. per. sq. inch.

A pump house is provided at each well. Pump type and C.T.C. fire extinguishers are provided at each of these. A standard fire hydrant of the type used throughout the Project is installed near the tank tower. A graveled roadway from the highway to the fire hydrant is provided for the operation of fire equipment.

A watchman's house is located near the tank structure. This will have a coal stove for heating during the cold season. Pump type fire extinguishers are located here for protection.

Water mains vary from 12" to 6" in diameter. They are constructed of welded sheet steel and located below the frost line for this area. All fire hydrants are of the dry, automatic draining type. Two 2½" and one 4½" outlets are provided. The hydrants are spaced about 500' apart and are located on the street near the center of the blocks. There are 116 hydrants in the Project. Some of

these are located on dead end mains which necessitates frequent flushing. A policy is enforced of giving each hydrant a flow test every 30 days. The water is allowed to run until it is clear of mud and sand.

Other sources of water supply for use in case of extreme emergency are; A shallow lake at the south-west side of the residence area which is filled from irrigation ditches; and a drainage ditch to the east and north portions of the area through which water may be supplied from irrigation sources.

The agricultural activities each have an adjacent water supply through both domestic and irrigation facilities. Adequate storage and pumping facilities have not been provided to afford a minimum fire protection.

FIRE DEPARTMENT EQUIPMENT

The fire department is equipped with one 500 GPM Hale pump mounted on a Chevrolet chassis, equipped also with a 150 gallon water tank and 150' of 1" Booster Hose. Other equipment on the truck is nozzles, suction, ladders, tools and connections. Fifty-three hundred feet of 2½" single jacket hose is provided.

The equipment and firemen are housed in a fire station which is constructed to house two pieces of Motor equipment and has accommodations and office space for two units of firemen.

Two hose drying racks are installed on the apparatus floor, with space for holding a load of hose. Warehouse space is used for storage of other hose and auxiliary equipment when not being used. [Auxiliary equipment consists of 400 - 4 gallon pump type extinguishers, 500 - 2½ gallon pump type extinguishers, 132 - 2½ gallon Foam, 45 - 1 qt. C.T.C. and 2 - 1 gallon C.T.C. Approximately 1200 water buckets have been placed in the residences of the people primarily as a fire protection measure.]

FIRE DEPARTMENT PERSONNEL

The personnel of the department consists of 1 Fire Protection Officer, Grade CAF-11 and 1 Associate Fire Protection Officer, Grade CAF-9.

The evacuee personnel consists of:

- 1 Assistant Chief
- 3 Captains
- 3 Engineers
- 1 Mechanic
- 1 Secretary
- 24 Firemen.

The Fire Prevention Bureau consists of:

- 1 Assistant Chief
- 29 Fire Inspectors

These inspectors are assigned to patrol each section of the city, and trained to detect and report fire hazards.

The auxiliary Volunteer firemen operate under the organization and leadership of the block fire inspector. The warehouse volunteers are chosen by the supervisor of their respective function; and the operation is directed by a set of regulations prescribed by the Fire Protection Officer and approved by the Project Director. The method of using these block volunteers is to bring them into use to check fire spreads through the use of hand pumps and block ladders of which there are two to each block. The same operation will be carried out by volunteers in the warehouses and these are also to assist in enforcing fire regulations in this area.

The firemen are worked in three shifts 24 hours on duty and 48 hours off, with enough additional time off to reduce the average time worked to 44 hours per week. The fire inspectors work 44 hours per week.

FIRE ALARM SYSTEM

The fire alarm system consists of ¹⁴~~25~~ mine type telephones located on poles in streets distributed over the Project, and a number of other telephones available which

may be used to report fire in a majority of cases. Military Police watchtowers surrounding the area are also connected by telephone to the central switch board. These can be regarded as a valuable aid for fire reporting.

HOSPITAL

The hospital group is constructed with a number of wings connected by a corridor. All units are heated with a central heating plant. A sprinkler system is being installed. This is to be connected with automatic alarm to the fire station. Two warehouses within the group for storage of hospital supplies are the greatest hazard present. The installation of double doors opening to the point of egress have been recommended at all doors to exits from patient occupied buildings. Ramps of proper width, slope and rail protection have been recommended to replace stairs leading from patient occupied buildings, to assist the rapid evacuation of patients in case of fire.

The installation of a standard approved type incinerator has been recommended.

PROJECT HEATING EQUIPMENT

Coal burning space heaters are generally used throughout the Project. The type of chimney construction and

stove pipe connection has given rise to abnormal sooting conditions and the added hazard which attends burning of accumulations of soot. Cracked terra cotta chimneys increase this hazard. Disposal of hot ashes presents a continuing problem. The lack of labor willing to move ashes and scarcity of metal containers has increased the problem. At present residents are placing hot ashes on the ground, and sometimes in small pits dug for the purpose, and then cooling them with water. As these accumulate they are removed by garbage collectors.

The principal complaint in this respect is that there are no standard methods which the people generally accept, and so far no procedure of enforcement has been evolved. Some cases have occurred in which fires have been ignited through careless handling of hot ashes, and one case of serious injury was reported in which a child fell into a pile of hot ashes and was burned to the extent that hospitalization was required.

The methods of installation and the care in use of heating equipment presents the major fire hazard of the community. Some of these additional conditions are particularly referred to: Cracked chimneys, overloaded draft and consequent excessive sooting of chimneys, overcrowded

living quarters and the tendency to let furniture, bedding, clothing and fuel get too close to hot stoves; and some cases of poor protective insulation between stoves and walls.

FIRE CONTROL REGULATIONS

The following regulations which are designed to prevent the start of or spread of fire, and which are of assistance to firemen in extinguishing fire have received approval and enforcement is constantly sought:

1. Parking of automobiles
2. Storage of fuel, paints, gasoline and petroleum distillates.
3. Removal of combustible rubbish in residence and industrial areas.
4. Disposal of hot ashes.
5. Prevention of open fires except with permission according to regulation.
6. Maintenance of aisles in warehouses.

FIRE ALARMS - CAUSES AND LOSSES

In the months of October 1, 1942 to March 1, 1943 the Fire Department responded to 20 fire alarms, two of which occurred on leased property in the town of Delta, which were extinguished by the Delta Fire Department.

A total loss of \$148.00 in buildings and contents are listed as follows:

Cause	No.	Loss	
		Building	Contents
Smoker carelessness	4	\$30.00	\$65.00
Hot ashes	3	8.00	10.00
Defective chimney	2	20.00	none
Rubbish near stove	1	15.00	none
Miscellaneous	10	none	none

NEED FOR ADDITIONAL MAJOR EQUIPMENT

With only one class 500 pumper assigned to this project and the impractical possibility of outside aid being received on a reciprocal basis; it is necessary to urge that every means be exercised to obtain the assignment of one additional class 500 pumper to fulfill a minimum requirement.

Part 1 - B.

~~PART B~~

CONSTRUCTION OF BUILDINGS WITHIN THE CENTER

Within an area approximately three fourths of a mile square are grouped the buildings which house the resident evacuees, the staff, and the necessary service buildings needed to provide for a city of nearly *more than* 8000 people.

The buildings mostly are of temporary frame and tarpaper construction, *inner walls and ceilings are lined with sheet rock,* ~~lined with gypsum board inner wall and ceilings,~~ the roofs are of tar paper, floors are of common lumber covered with masonite, exceptions are floors of kitchens, dining halls, laundries, latrines, heater rooms and warehouses which have concrete floors.

Resident blocks are approximately 500' square and are surrounded by graveled roads, all buildings are separated at least forty feet to prevent the spread of fire from building to building.

Chimney's are generally of Terra Cotta tile with a 16 gauge steel inner liner, the stoves of adjoining apartments vent into a common chimney. Chimney's are vented through the roof and fitted with a standard ventilated roof jack. Single stoves are usually vented through stove pipe, the joints of which are either riveted or spot welded, and are protected at roof openings with metal roof jack.

In the beginning, due to the fact that people were arriving daily, it became necessary to put stoves in operation in barracks before the steel inner liners had been received and installed in the Terra Cotta chimney's, (was time shortages having prevented shipment)

these terra cotta chimney's cracked badly and were serious fire hazards which was not abated until the arrival and installation of the steel inner liners.

Even after the inner liners had been installed the fire protection officer felt that there was danger, the flue as designed was considered below standard. A very close watch was maintained (by fire inspectors) repairs were quickly made where necessary, and as a result the fire record shows few if any fires to have been caused by faulty flues. This is considered a remarkable record.

Three ranges in each mess kitchen are vented through eight inch metal pipes which are protected by ventilated metal thimbles and standard roof jacks where they pass through the roof. Water heaters in each kitchen are vented into the nearest range flue.

Hoods made of sheet asbestos are installed over kitchen ranges. These are vented through the roof with eight inch metal pipe. Surrounding walls are protected by ventilated shields made of sheet asbestos.

Water is heated for the block laundries and lavatories at a central heating plant within the building. A coal burning boiler vents into a brick chimney. The heated water is stored in large insulated tanks. These installations were especially good, and there were no fires from this source.

FIRE HAZARDS

NOTE: Fire hazards during the first nine months of occupation are treated
Explanatory *Statistical*
under remarks ~~in~~ the report for that period.

preceding
As time passed numerous fire hazards developed. Stoves had been carelessly installed to close to walls, stove pipes were not properly protected by thimbles where they pierced ceilings and roofs, and joints were not riveted nor welded as required. Buildings were constructed without first obtaining approval of the fire protection officer, this was also true of warehouse storage, and *other* occupancies. Temporary electric wiring by un-authorized persons was common. Residents accumulated combustible articles which were piled against barracks both front and rear and were a definite outside exposure hazard.

During cold weather excessive firing of coal heating units became the general practice, it being customary to fill space heaters with coal at the close of the work day so that the premises would be warm the next morning, when proper adjustment of draft was neglected a definite hazard was created by the overheated stove.

apparently
These hazards were present in rather large numbers, that they caused no fires was largely because of frequent inspections, and protective measures taken at once where hazards were found. A remarkable record when type of construction the crowded quarters of the evacuee families, and the general temporary nature of the entire project is considered.

When the final closing date was set and people began moving to their future homes, fire hazards common to ^{the} storage of large quantities of crated household goods in sub-standard warehouses, and the litter of packing and moving ^{was} ~~wer~~ present in large numbers. However good cooperation and reasonable compliance with preventive rules resulted in no fire of consequence during the removal of the residents to their new homes.

WATER MAINS, FIRE HYDRANTS AND WATER SUPPLY.

As originally installed water mains were of welded sheet steel of varying thickness ^(12-14 gauge) and from 12" to 6" in diameter. This was all used pipe which had been heavily tared ^R but was entirely unsuited for this purpose developing leaks almost at once, leaks soon became so numerous that water was turned off in several mains extending across the project, in order to conserve the water supply. Mains ^{as first installed} were of ample size well gridded. Valves however were few requiring long stretches of main to be shut off when repairs were necessary which was often ~~(See Engineers report)~~ report.

Fire hydrants were originally located one on each side of a block which was adequate. A total of 116 hydrants gave good coverage. This greatly decreased as it became necessary to shut water from leaking mains. The total fire hydrants in service reached ^a low in September 1944 when there were only 45 ^{hydrants in service} to furnish protection for the entire center. Replacing of mains under a revised plan was commenced before this ^{date} but it was not until June 1945 that the final length of pipe was laid and the system as revised completed. Hydrants in service ^{now} numbered 81 and

according to the revised plan, and are believed to be reasonably adequate. While length of hose lines to cover all portions of the blocks in case of fire are long, they are not excessive. Valves are more numerous and so arranged that not more than two blocks will be shut off for any failure or break. (See Engineers report)

Water for both domestic use and fire extinguishment, is pumped from three wells ^{988-640 - 640} ~~500-635~~ and ~~638~~ feet in depth. Electric power for ^{deep well type} motor driven pumps is from a single source, but is fairly reliable, one well is equipped with a 50 H.P. Case tractor, gasoline engine as an auxiliary. (See attached chart and Engineers report) Water is pumped into elevated storage consisting of 4 redwood tanks of 125,000 gallons each, these tanks are elevated 80 feet by a wooden frame tower near the wells, the elevated tanks receive water from the wells through 12" welded steel pipe, and water from storage is discharged into the mains through 12" welded steel pipes. Head averages ^{80 to 100} ~~over 85~~ feet and static pressure in mains is normally 35 to 40 pounds. Tests at hydrants farthest from storage showed a drop of from 10 to 15 pounds which is not excessive, a minimum of ^{Pressure at} 20 pounds suction is adequate. Domestic use of water seems ^{high} ~~reasonable~~ (there are ~~few~~ lawns) ^{lower} and there was sufficient water in storage at all times to extinguish any fires which might be expected to occur.

NOTE: For complete statistics on mains, fire hydrants and water supply, see closing report of the Engineering Section.

WAR RELOCATION AUTHORITY
CENTRAL UTAH PROJECT
May 1, 1945

H. 1.01

Abbott, Edward L.	Assistant Storekeeper	Delta, Utah
Anderson, Andrew P.	Head Teacher	207-A
Anderson, Naomi	Secondary School Teacher	207-A
Atkinson, Anna M.	Counseling Aide	Dorm. D-11
Baca, Ben B.	Fiscal Accountant	213-B
Bane, Laverne C. (Dr.)	Jr. Sr. High School Principal	212-A
Bane, Lora K. (Mrs.)	Sr. Elementary School Teacher	212-A
Barlow, Shelton T.	Storekeeper	Dorm. B-6
Baumgartner, Robert	Internal Security Officer	201-B
Baumgartner, Ruth	File Clerk	201-B
Bell, Roscoe E.	Assistant Project Director	211-A
Bennett, Jerold S.	Storekeeper	Deseret, Utah
Bennett, Lawrence	Guard	Deseret, Utah
Bishop, Cleo D.	Secondary School Teacher	Hinckley, Utah
Bishop, Heber G.	Telephone Operator	Hinckley, Utah
Bishop, Lowell	Foreman Plumber	213-D
Black, Ella C. (Mrs.)	Elementary School Teacher	Delta, Utah
Bond, Patricia	Secondary School Teacher	Dorm. D-12
Bosh, Mervin A.	Auditor	207-C
Bowen, Grant R.	Statistician	Dorm. A-12
Boyce, Doren B.	Finance Officer	213-C
Buchanan, Lloyd	Attorney	211-C
Campbell, Glen P.	Foreman Mechanic	2-4-CD
Campbell, Leone B. (Mrs.)	Supervising Nurse	203-C
Campbell, William J.	Assistant Personnel Officer	203-C
Carmichael, Perry	Adult & Vocational Education Supervisor	Dorm. B-11
Caster, Bertha	Elementary School Teacher	Dorm. D-4
Chastain, Martha J.	Property Clerk	211-D
Cochran, Mary Lue	Medical Social Worker	Dorm. D-2
Collier, Douglas	Principal Medical Officer	204-D
Conrad, E. Wafford	Reports Officer	205-D
Coombs, Virgil H.	Assistant Statistician	Dorm. B-5
Cox, Helen M.	Fiscal Accounting Clerk	2-2-E
Crane, James M.	Chief Foreman Construction	205-C
Crane, Pauline A.	Secondary School Teacher	212-B
Crane, Wallace	Chief Engineer	212-B
Crosbie, Sara	Elementary School Teacher	Dorm. C-1

Cannon, Read W. Clayton, Fred	Assistant Auditor Assistant Storekeeper	Dorm. A-14 Delta, Utah
Davis, David E. Davis, Verdon J. Dawson, Mary K. DeHaan, Adrian J. Denby, Josephine Dickinson, Leah K. Dingley, Helen Dingley, Leighton Dobson, Leon E.	Assistant Procurement Officer Foreman Mechanic Supervising Nurse Senior Medical Officer Supervising Nurse Relocation Program Officer Secondary School Teacher Assistant Relocation Advisor Foreman Pump Operator	Dorm. A-9 Deseret, Utah Topaz Hospital Topaz Hospital 204-C 204-C 203-B 203-B Dorm. B-4
Earle, Dorothy Earle, Ralph G. Enlow, Foy L.	Gate Clerk Junior Counselor Assistant Relocation Advisor	206-D 206-D 205-B
Faris, Robert W. Featherstone, Joseph F. Fields, Albert Fry, Helen Fullmer, John W. Finlinson, Maxyne	Guard Chief Sanitarian Assistant Storekeeper Secretary (Legal) Foreman Construction Property Clerk	Hinckley, Utah Topaz Hospital Dorm. B-1 Dorm. C-12 Abraham, Utah 2-2-E
Gardner, E. Eugene Garrison, Elizabeth S. Gerard, Eleanor Gonzales, Eralix V. Gonzales, Vincent	Foreman Maintenance Assistant Relocation Advisor Guidance Counselor Office Manager Assistant Finance Officer	Delta, Utah Dorm. D-15 210-B 212-D 212-D
Harmon, Owen M. Hartman, Austin Henderson, Ellen C. Herndon, Emmett E. Hoffman, L. T. Hoffman, Elsa S. Hoffman, Oscar F. Hoffman, Rosalie Holman, Arvilla B. Hopkins, J. Frank Hudson, Marguerite W.	Foreman Electrician Internal Security Officer Head Teacher Assistant Cost Accountant Project Director Supervising Nurse Community Analyst Clerk Stenographer Telephone Operator Assistant Construction Superintendent Head Teacher	Dorm. A-2 Dorm. B-12 2-2-F Dorm. A-8 204-AB 204-AB 213-A 213-A Delta, Utah Deseret, Utah Dorm. D-14

Hunter, Adeline	Secretary	201-A
Hunter, William W.	Procurement Officer	201-A
Jenkins, Nellie	Assistant Relocation Advisor	206-B
Johnson, Evan A.	Assistant Farm Superintendent	Delta, Utah
Jones, Joseph M.	Agent Cashier	Dorm. B-7
Jones, Laurence R.	Project Steward	207-D
Kasius, Andrew W.	Assistant Chief of Internal Security	Dorm. B-8
Kaufman, Eugene	Junior Fiscal Accountant	Dorm. B-15
Kelly, Otis L.	Assistant Storekeeper	Dorm. B-10
Kimball, Herman	Assistant Finance Officer	209-D
Kirchner, Augusta N.	Chief Nurse	Topaz Hospital
Knight, Julia M.	Elementary School Teacher	Dorm. D-3
Knight, Martha	Elementary School Teacher	2-3-F
Knight, Samuel	Assistant Storekeeper	Hinckley, Utah
Knight, Venice R.	Telephone Operator	Deseret, Utah
Koziol, Pauline	Junior Counselor	Dorm. C-11
Largent, Emmer	Guard	2-4-B
Light, Emily U.	Elementary School Teacher	2-3-D
Linnarz, Otto J.	Foreman Mechanic	206-C
Long, Jessie M.	Secondary School Teacher	Dorm. C-3
Looper, Ishmael	Vocational Teacher	209-B
Looper, Edna B.	Secondary School Teacher	209-B
Maas, Clarice H.	Gate Clerk	202-D
Maas, Harold	Vocational Training Instructor	202-D
Mace, Hyrum B.	Junior Mechanic	Dorm. A-1
Mack, Margaret	Assistant Counselor	2-4-F
Maggiore, Robert A.	Head Teacher	Dorm. B-9
Marstella, Alice W.	Statistical Clerk	210-D
Marstella, Richard O.	Hospital Administrator	210-D
Matthews, Betty	Secondary School Teacher	Dorm. C-4
Matzkin, Muriel R. J.	Secondary School Teacher	210-B
McCluskey, Frances E.	Assistant Relocation Advisor	2-1-D
McConnell, Marie C.	Cost Accounting Clerk	209-A
McConnell, Paul S.	Leave Officer	209-A
Mecham, Kenneth	Utilities Operation Supt.	Delta, Utah
Merrill, Effie	Secondary School Teacher	Dorm. D-8
Merrill, Laura R.	Librarian	Dorm. D-10
Mitchell, Rhett J.	Dietician	Topaz Hospital

Morley, Callie A. O.	Elementary School Teacher	Delta, Utah
Mortensen, Elwood M.	Sr. Foreman Mechanic	Delta, Utah
Niesse, Gilbert L.	Assistant Project Director	203-D
Noble, LeGrande	Superintendent of Education	Delta, Utah
Nowell, Geraldine	Supervising Telephone Operator	202-B
Nowell, Willis	Assistant Fire Protection Officer	202-B
Ostlund, Clarence	Secondary School Teacher	208-D
Ostlund, Della	Secondary School Teacher	208-D
Palecek, Muriel	Secondary School Teacher	Dorm. C-14
Palmer, W. Wendell	Chief of Agricultural	203-A
Perkins, Emmie W.	Supervising Nurse	Topaz Hospital
Pratt, Claud H.	Counselor	202-C
Pratt, Dorothy B.	Personnel Clerk	202-C
Purcell, Clifford L.	Equipment Maintenance Supervisor	Dorm. A-6B
Raddatz, Henry E.	Secondary School Teacher	201-C
Robins, Melvin H.	Assistant Property & Warehousing Officer	Hinckley, Utah
Robinson, Ruth W.	Secondary School Teacher	209-C
Robinson, Warren	Welder	209-C
Roof, Robert	Chief of Internal Security	212-C
Roof, Ruth C.	Secondary School Teacher	212-C
Roraback, Charles H.	Fire Protection Officer	211-B
Sanford, Raymond P.	Assistant Project Director	202-A
Sekerak, Emil E.	Relocation Advisor	Dorm. B-2
Shaw, Nellie C.	Sr. Elementary School Teacher	Dorm. D-9
Skeem, Norma H.	Clerk Stenographer	Dorm. C-10
Skidmore, Albert L.	Receiving & Shipping Supervisor	Delta, Utah
Snyder, Robert M.	Foreman Mechanic	Dorm. A-6A
Sorenson, Ivan	Actg. Motor Pool Supervisor	Delta, Utah
Stahl, Frieda E.	Gate Clerk	208-A
Stahl, Roy P.	Actg. Chief Project Steward	208-A
Stewart, Bernard	Foreman Mechanic	2-4-CD
Taylor, Marjorie B.	Clerk Stenographer	Abraham, Utah
Theobald, Laffayette	Guard	Hinckley, Utah
Thornton, Grace J.	Secondary School Teacher	Dorm. D-1
Tolbert, Sherman W.	Foreman Mechanic	Delta, Utah
Traylor, Geneva	Elementary School Teacher	Dorm. C-2

Tyrrel, Claude A.	Head Teacher	205-A
Wade, Daisy T.	Laboratory Technician	210-C
Weand, Nora H.	Supervising Nurse	Dorm. C-8
Wood, Leonard A.	Foreman Carpenter	Dorm. A-10
Wyckoff, Josephine L.	Sr. Elementary School Teacher	Dorm. C-9
Wehmeyer, Jean	Elementary School Teacher	Dorm. C-15
Williams, Virgil K.	Assistant Relocation Advisor	201-D
Rae R. Petersen	Clerk Typist	Delta, Utah
Mary A. Taylor	Clerk Typist	Abraham, Utah
Etta H. Tullis	Telephone Operator	Hinckley, Utah
Carole B. Warnick	Clerk Typist	Deseret, Utah

41102

<u>DIVISION & SECTION</u>	<u>POSITION</u>	<u>MONTHLY SALARY</u>	<u>BOND DEDUCTION</u>
Ella C. Black	Elementary School Teacher	\$164.25	\$ 10.00
Sara J. Crosbie	Elementary School Teacher	164.25	-----
Louisa Finney	Elementary School Teacher	164.25	-----
Martha L. Knight	Elementary School Teacher	164.25	-----
Callie A. O. Morley	Elementary School Teacher	164.25	18.75
Hazel B. Noss	Elementary School Teacher	164.25	18.75
Zelma T. Seal	Elementary School Teacher	164.25	-----
Nellie C. Shaw	Elementary School Teacher	164.25	-----
Goldie M. Stollar	Elementary School Teacher	164.25	18.75
Josephine L. Wyckoff	Elementary School Teacher	164.25	25.00
<u>Library</u>			
Laura R. Merrill	Librarian	202.77	18.75
<u>Health Section</u>			
Douglas R. Collier	Principal Medical Officer	519.02	75.00
Richard O. Marstella	Hospital Administrator	327.36	37.50
Mary Lue Cochran	Medical Social Worker	318.02	18.75
Joseph F. Featherstone	Sanitarian	263.61	18.75
Rhettta J. Mitchell	Dietician	263.61	18.75

<u>DIVISION & SECTION</u>	<u>POSITION</u>	<u>MONTHLY SALARY</u>	<u>BOND DEDUCTION</u>
Augusta N. Kirchner	Chief Nurse	\$263.61	\$ 75.00
Vina M. Stockbrand	Asst. Chief Nurse	233.19	18.75
Leone B. Campbell	Supv. Nurse	202.77	37.50
Elsa S. Hoffman (temporary) Part-time	Supv. Nurse	102.00	-----
Daisy T. Wade	Laboratory Technician	202.77	18.75
Nora H. Weand	Supv. Nurse	202.77	18.75
Emmie W. Perkins	Supv. Nurse	202.77	18.75
Mary K. Smith-Walker	Sr. Staff Nurse	182.50	-----
<u>Welfare Section</u>			
Claud H. Pratt	Counselor	369.02	37.50
Margaret L. Mack	Asst. Counselor	318.02	50.00
G. Ralph Earl	Jr. Counselor	263.61	37.50
<u>Internal Security Section</u>			
Robert W. Roof	Chief of Int. Sec.	369.02	75.00
Andrew W. Kasius	Asst. Chief of Int. Sec.	318.02	75.00
John C. Fife	Internal Security Officer	263.61	37.50
Robert W. Faris	Guard	176.40	75.00
Laffayette Theobald	Guard	176.40	25.00

<u>DIVISION & SECTION</u>	<u>POSITION</u>	<u>MONTHLY SALARY</u>	<u>BOND DEDUCTION</u>
J. Lawrence Bennett	Guard	\$170.33	\$ 18.75
George L. Stewart (WAE)	Princ. Guard	162.50	50.00
Rosalie M. Hoffman (temporary)	Clerk Stenographer	164.25	-----
<u>Community Activities Section</u>			
Eleanor Gerard	Acting Comm. Activ. Supv.	318.02	-----
<u>Community Analysis Section</u>			
Oscar F. Hoffman	Community Analyst	369.02	75.00

Office for Emergency Management
War Relocation Authority
Relocation Center
Personnel Chart
May 13, 1943
(Chart #1 of 4 charts)

OFFICE OF PROJECT DIRECTOR		
Project Director	CAF-14	6500
Secretary	CAF-5	2000

LEGAL DIVISION		
Attorney	P-5	4600
Secretary	CAF-3	1620

REPORTS DIVISION		
Reports Officer	CAF-11	3800

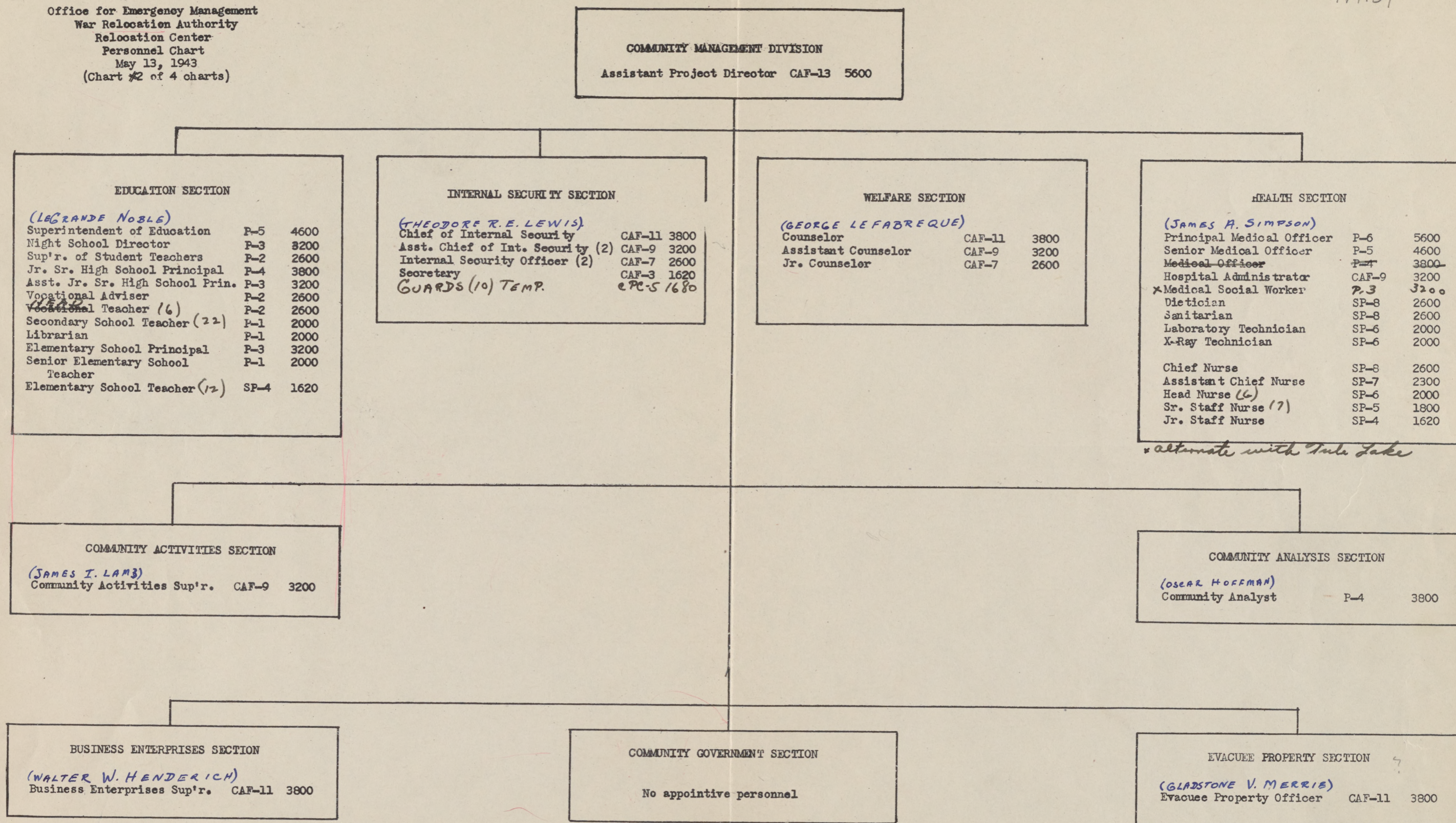
<i>Relocation Division</i>		
<i>Relocation Program officer</i>	<i>caf-12</i>	<i>4600</i>
<i>Asst. Relocation Program officer</i>	<i>caf-11</i>	<i>3800</i>
<i>Relocation advisor</i>	<i>caf-7</i>	<i>2600</i>
<i>Recor officer</i>	<i>caf-7</i>	<i>2600</i>

CENTER NEWS SECTION		
No appointive personnel		

COMMUNITY MANAGEMENT DIVISION		
(See page 2)		

OPERATIONS DIVISION		
(See page 4)		

ADMINISTRATIVE MANAGEMENT DIVISION		
(See page 3)		



ADMINISTRATIVE MANAGEMENT DIVISION

Assistant Project Director CAF-13 5600

SUPPLY SECTION

Supply Officer CAF-12 4600

FINANCE SECTION

Finance Officer CAF-12 4600

~~MOTOR TRANSPORT & MAINTENANCE UNIT~~

~~Equipment Maintenance Sup'r. CAF-9 3200
Asst. Equip. Maint. Sup'r. CAF-7 2600
Motor Pool Supervisor CAF-7 2600
Foreman Mechanic CPC-8 2200
Senior Mechanic CPC-7 2040
Junior Mechanic CPC-5 1680~~

MESS MANAGEMENT UNIT

Steward CAF-11 3800
Asst. Steward. CAF-9 3200
Storekeeper CAF-7 2600

BUDGET & ACCOUNTS UNIT

Fiscal Accountant CAF-11 3800
Asst. Fiscal Accountant CAF-9 3200
Jr. Fiscal Accountant CAF-7 2600
Fiscal Accounting Clk. CAF-5 2000

Auditor CAF-9 3200
Asst. Auditor CAF-7 2600
Audit Clerk CAF-5 2000

COST ACCOUNTING & PROPERTY CONTROL UNIT

Cost Accountant CAF-11 3800
Asst. Cost Accountant CAF-9 3200
Jr. Cost Accountant CAF-7 2600
Cost Accounting Clk. CAF-5 2000

Storekeeper CAF-7 2600
Asst. Storekeeper CAF-5 2000

Property Officer CAF-7 2600
Property Clerk CAF-5 2000

PROCUREMENT UNIT

Procurement Officer CAF-11 3800
Asst. Procurement Officer CAF-9 3200

POSTAL SERVICE UNIT

No appointive personnel

OFFICE SERVICES SECTION

Office Manager CAF-5 2000
File Clerk CAF-4 1800
Sup'r'g. Telephone Operator CAF-3 1620
Telephone Operator (3) CAF-2 1440

^{management}
PERSONNEL SECTION

Personnel Officer CAF-7 2600
~~Personnel Officer CAF-12 4600~~
~~Asst. Personnel Officer CAF-11 3800~~
~~Personnel Technician CAF-9 3200~~
~~Personnel Transactions Officer CAF-7 2600~~

~~EMPLOYMENT SECTION~~

~~Employment Officer CAF-12 4600
Placement Officer CAF-9 3200
Leave Officer CAF-9 3200
Asst. Placement Officer CAF-7 2600~~

STATISTICS SECTION

Statistician P-3 3200

OPERATIONS DIVISION
Assistant Project Director CAF-13 5600

ENGINEERING SECTION
Senior Engineer P-5 4600

AGRICULTURE SECTION
Chief of Agriculture P-5 4600
Farm Superintendent CAF-11 3800
Asst. Farm Superintendent (2) CAF-9 3200
Foreman (2) CPC-6 1860

IRRIGATION, DRAINAGE & ROADS *Unit* SECTION
Irr. (or Drainage) Engr. P-4 3800
Chief Const. Foreman CPC-10 2600
Sr. Const. Foreman CPC-8 2200

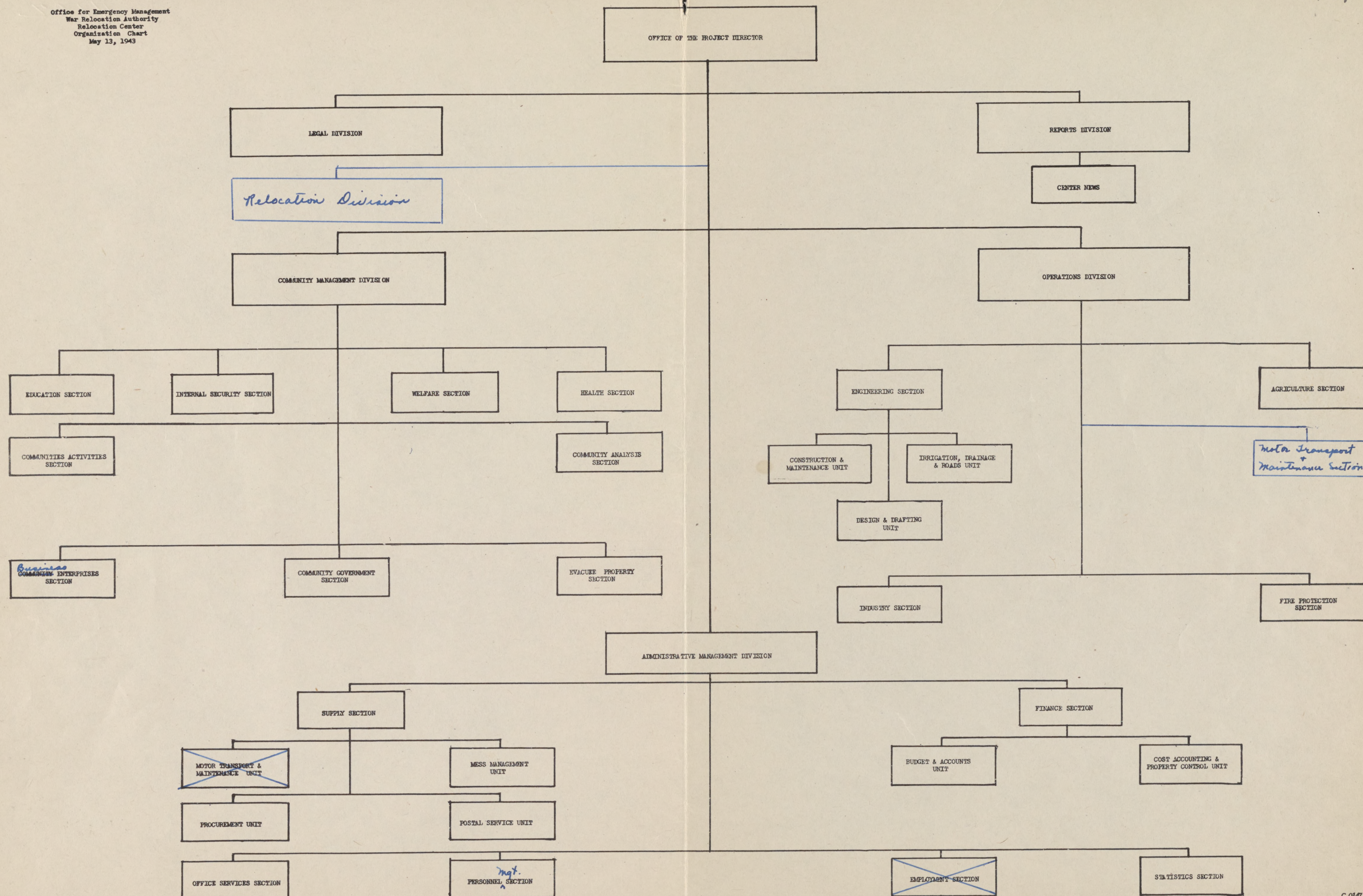
CONSTRUCTION & MAINTENANCE *Unit* SECTION
Const. & Maint. Sup't. CAF-11 3800
Asst. Const. Sup't. CAF-9 3200
Electrical Engineer P-3 3200
Sanitary Engineer P-3 3200
Foreman Mechanic (4) CPC-8 2200
Carpenter Foreman CPC-8 2200

Motor Transport & Maintenance Section
Equipment Maintenance Supr. *caf-9* 3200
Asst. Equip. Maint. Supr. *caf-7* 2600
Motor Pool Supervisor *caf-7* 2600
Foreman Mechanic CPC-8 2200
Senior Mechanic CPC-7 2040
Junior Mechanic CPC-5 1680

DESIGN & DRAFTING *Unit* SECTION
Design Engineer P-3 3200

INDUSTRY SECTION
Foreman CPC-6 1860

FIRE PROTECTION SECTION
Fire Protection Officer CAF-11 3800
Asst. Fire Protection Officer CAF-9 3200



Department of the Interior
 War Relocation Authority
 Relocation Center
 Personnel Chart
 November 1, 1944
 (Chart #1 of 4 charts)

Central

OFFICE

Project Director
 Secretary

Utah Relocation Center

OF PROJECT DIRECTOR

CAF-14 6500
 CAF-5 2000

LEGAL DIVISION

Attorney P-5 4600
 Clerk Stenographer CAF-4 1800

REPORTS DIVISION

Reports Officer CAF-11 3800

RELOCATION DIVISION

Relocation Program Officer CAF-12 4600
 Asst. Relocation Prog. Off. CAF-11 3800
 Relocation Adviser CAF-9 3200
 Asst. Relocation Adviser(4) CAF-7 2600
 Leave Officer CAF-7 2600
 Clerk Stenographer CAF-4 1800

COMMUNITY MANAGEMENT DIVISION

(See Chart 2)

OPERATIONS DIVISION

(See Chart 3)

ADMINISTRATIVE MANAGEMENT DIVISION

(See Chart 4)

H1.01

Department of the Interior
War Relocation Authority
Relocation Center
Personnel Chart
October 1, 1944
(Chart #2 of 4 charts)

CENTRAL UTAH

RELOCATION CENTER

COMMUNITY

Assistant Project
Secretary

MANAGEMENT DIVISION

Director CAF-13 5600
CAF-4 1800

EDUCATION SECTION

Superintendent of Educ.	P-5	4600
Adult Education Supvr.	P-3	3200
Supvr. of Student Teachers	P-2	2600
Librarian	P-1	2000
High School Principal	p-4	3800
Asst. High School Prin.	P-3	3200
Guidance Counselor	P-2	2600
Head Teacher (5)	P-2	2600
Secondary School Teacher (21)	P-1	2000
Elemen. School Principal	P-3	3200
Sr. Elemen. School Teacher (6)	P-1	2000
Elemen. School Teacher (10)	SP-4	1620
Vocational Trng. Supvr.	P-3	3200
Vocational Teacher	SP-8	2600

INTERNAL SECURITY SECTION

Chief of Internal Security	CAF-11	3800
Asst. Chief of Int. Sec. (2)	CAF-9	3200
Internal Security Officer (2)	CAF-7	2600
Clerk Stenographer	CAF-3	1620
Guards (3)	CPC-5	1680
Guard (WAE)	CPC-5	1680
Evacuee Escort (WAE)	CPC-5	1680

WELFARE SECTION

Counselor	P-4	3800
Assistant Counselor (2)	P-3	3200
Jr. Counselor (5)	P-2	2600
Clerk Stenographer	CAF-3	1620
Counseling Aide	SP-6	2000

HEALTH SECTION

Principal Medical Officer	P-6	5600
Hospital Administrator	CAF-9	3200
Medical Social Worker	P-3	3200
Dietician	SP-8	2600
Sanitarian	SP-8	2600
Laboratory Technician	SP-6	2000
Chief Nurse	SP-8	2600
Asst. Chief Nurse (2)	SP-7	2300
Supervising Nurse (5)	SP-6	2000
Sr. Staff Nurse (3)	SP-5	1800

COMMUNITY ACTIVITIES SECTION

Community Activities Supvr. P-4 3800

COMMUNITY ANALYSIS SECTION

Community Analyst P-4 3800

BUSINESS ENTERPRISES SECTION

No personnel paid by WRA

COMMUNITY GOVERNMENT SECTION

No appointive personnel

Department of the Interior
War Relocation Authority
Relocation Center
Personnel Chart
July 1, 1944
(Chart #3 of 4 charts)

Central

Assistant
Secretary

ENGINEERING SECTION

Senior Engineer	P-5	4600
Office Engineer	P-3	3200
Operation Analyst	CAF-5	2000

IRRIGATION, DRAINAGE & ROADS UNIT

Irrig., Drainage & Rds. Supt.	CAF-9	3200
Chief. Fore. Const.	CPC-10	2600
Sr. Fore. Const.	CPC-8	2200
Dragline Oper. (unalloc.)	1.50 per hr.	
Welder (unalloc.)	1.50 per hr.	

CONSTRUCTION & MAINTENANCE

Const. & Maint. Supt.	CAF-11	3800
Asst. Const. Supt.	CAF-9	3200
Utility Oper. Supt.	CPC-10	2600
Foreman Electrician	CPC-10	2600
Foreman Maintenance	CPC-9	2300
Foreman Carpenter (2)	CPC-8	2200
Foreman Plumber	CPC-10	2600
Foreman Mechanic (2)	CPC-8	2200
Foreman Pump Operator	CPC-8	2200
Sr. Foreman Mechanic	CPC-9	2200

INDUSTRY SECTION

Utah Relocation Center

OPERATIONS DIVISION

Project Director	CAF-13	5600
	CAF-4	1800

AGRICULTURE SECTION

Chief of Agriculture	P-5	4600
Farm Superintendent	CAF-11	3800
Asst. Farm Superintendent (2)	CAF-9	3200
Foreman	CPC-8	2200
Foreman	CPC-6	1860
Foreman Irrigation	unalloc.	.75
	NTE	10-30-44

MOTOR TRANSPORT & MAINTENANCE SECTION

Equipment Maintenance Supervisor	CAF-11	3800
Asst. Equip. Maint. Supervisor	CAF-9	3200
Motor Pool Supervisor	CAF-9	3200
Sr. Foreman Mechanic	CPC-9	2300
Foreman Blacksmith	CPC-9	2300
Foreman Mechanic (2)	CPC-8	2200
Heavy Duty Truck Driver	CPC-5	1680
Night Dispatcher	CPC-5	1680
Foreman Mechanic (2)	unalloc.	1.50
		per hour

FIRE PROTECTION SECTION

Fire Protection Officer	CAF-11	3800
Asst. Fire Protection Officer	CAF-9	3200

Department of the Interior
War Relocation Authority
Relocation Center
Personnel Chart
July 1, 1944
(Chart #4 of 4 charts)

Central Utah

Relocation Center

ADMINISTRATIVE

Assistant Project Director
Secretary

MANAGEMENT DIVISION

CAF-13 5600
CAF-4 1800

SUPPLY SECTION

Supply Officer CAF-12 4600

PROCUREMENT UNIT

Procurement Officer CAF-11 3800
Asst. Procurement Officer CAF-9 3200

PROPERTY CONTROL & WAREHOUSING UNIT

Prop. & Warehousing Officer CAF-9 3200
Storekeeper CAF-7 2600
Asst. Storekeeper (5) CAF-5 2000
Property Officer CAF-7 2600
Property Clerk CAF-5 2000

POSTAL SERVICE UNIT

No appointive personnel

STATISTICS SECTION

Statistician P-3 3200
Gate Clerk (3) CAF-3 1620

PERSONNEL MANAGEMENT SECTION

Personnel Officer CAF-12 4600
Asst. Personnel Officer CAF-11 3800
Personnel Technician CAF-9 3200
Personnel Trans. Officer CAF-7 2600
Personnel Clerk CAF-4 1800

FINANCE SECTION

Finance Officer CAF-12 4600

COST ACCOUNTING UNIT

Cost Accountant CAF-11 3800
Asst. Cost Accountant CAF-9 3200
Jr. Cost Accountant CAF-7 2600
Cost Accounting Clerk CAF-5 2000

BUDGET & ACCOUNTS UNIT

Fiscal Accountant CAF-11 3800
Asst. Fiscal Accountant CAF-9 3200
Jr. Fiscal Accountant CAF-7 2600
Fiscal Accounting Clerk CAF-5 2000
Auditor CAF-9 3200
Asst. Auditor CAF-7 2600
Audit Clerk CAF-5 2000
Agent Cashier CAF-6 2300

MESS OPERATIONS SECTION

Chief Project Steward CAF-11 3800
Project Steward (2) CAF-9 3200
Storekeeper CAF-7 2600

EVACUEE PROPERTY SECTION

Evacuee Property Officer CAF-11 3800

OFFICE SERVICES SECTION

Office Manager CAF-5 2000
File Clerk CAF-4 1800
Supvr. Telephone Oper. CAF-3 1620
Telephone Operator (3) CAF-2 1440

H101
NA2:7
Pm

PROJECT ORGANIZATION CHART
CENTRAL UTAH RELOCATION CENTER

MARCH 3, 1944

GENERAL PROJECT MANAGEMENT

Office of Project Director

Charles F. Ernst
Adeline P. Hunter

Project Director
Secretary

Legal Division

Ralph C. Barnhart
Vacant (1)

Attorney
Secretary

Reports Division

Russell A. Bankson

Reports Officer

Center News Section

No appointive personnel

Relocation Division

Leah K. Dickinson
Corlies R. Carter
Vacant (1)
Adrian H. Altvater
Emil E. Sekerak

Relocation Program Officer
Asst. Relocation Program Officer
Relocation Advisor
Leave Officer
Relocation Office Co-ordinator

COMMUNITY MANAGEMENT DIVISION

Raymond P. Sanford

Assistant Project Director

Community Analysis

Oscar F. Hoffman

Community Analyst

Education Section

LeGrande Noble
Drayton B. Nuttall
Brig A. Perkins

Supt. of Education
Jr. Sr. High School Principal
Asst. Jr. Sr. High School
Principal

Laverne C. Bane
Vacant (1)
Eleanor Gerard
Victor Goertzel
Marguerite W. Hudson
Clarence Ostlund
Claude A. Tyrrel
Leon A. Westover
Vacant (2)
Vacant (1)

Night School Director
Vocational Training Supervisor
Supv. of Student Teachers
Vocational Advisor
Head Teacher
Head Teacher
Head Teacher
Head Teacher
Head Teacher
Auto Mechanics Teacher

Education Section - continued

Andrew P. Anderson	Sec. School Teacher
Naomi R. Anderson	Sec. School Teacher
Thayer C. Barrus	Sec. School Teacher
Daisy K. Burre	Sec. School Teacher
Harold E. Carlson	Sec. School Teacher
B. Davis Evans	Sec. School Teacher
Ellen C. Henderson	Sec. School Teacher
M. Laura Hickman	Sec. School Teacher
Zeda R. Lisle	Sec. School Teacher
Lydia A. Lindsey	Sec. School Teacher
Barbara Loomis	Sec. School Teacher
Robert A. Maggiora	Sec. School Teacher
Muriel R. J. Matzkin	Sec. School Teacher
Pauline G. Newman	Sec. School Teacher
John P. Phillips	Sec. School Teacher
Helen C. Plummer	Sec. School Teacher
Glenn T. Seal	Sec. School Teacher
Shervy M. Sharvy	Sec. School Teacher
Elouise J. Sundquist	Sec. School Teacher
Louise M. Watson	Sec. School Teacher
Maurine R. Westover	Sec. School Teacher
Vacant (1)	Sec. School Teacher
Lottie Lee Lamb	Librarian
Wanda Robertson	Elementary School Principal
Jessie Harroun	Sr. Elem. School Teacher
Lora K. Bane	Elementary School Teacher
Ella C. Black	Elementary School Teacher
Iva E. N. Brubaker	Elementary School Teacher
Martha Johnson Chastain	Elementary School Teacher
Sophie D. S. Greene	Elementary School Teacher
Rosalie M. Hoffman	Elementary School Teacher
Callie A. O. Morley	Elementary School Teacher
Zelma Thorpe	Elementary School Teacher
Josephine L. Wyckoff	Elementary School Teacher
Vacant (8)	Elementary School Teacher

Internal Security Section

Theodore R. E. Lewis	Chief of Internal Security
Marshall Y. Chapman	Assoc. Internal Security Officer
Robert W. Roof	Assoc. Internal Security Officer
Harold Russell	Internal Security Officer
Vacant (1)	Internal Security Officer
Robert W. Faris	Principal Guard
Laffayette Theobald	Principal Guard
Frances M. Farrell	Evacuee Escort
Vacant (1)	Secretary

Health Section

James A. Simpson	Principal Medical Officer
Vacant (1)	Sr. Medical Officer
Oscar E. Thomas	Hospital Administrator

Health Section - continued

Vacant (1)	Medical Social Worker
Joseph F. Featherstone	Sanitarian
Vacant (1)	Dietician
Vacant (1)	Chief Nurse
Margaret A. McCaffery	Asst. Chief Nurse
Vacant (1)	X-Ray Technician
Violet L. Adams	Supervising Nurse
Leone B. Campbell	Supervising Nurse
Vina M. Stockbrand	Supervising Nurse
Vacant (3)	Supervising Nurse
Mary E. Sebring	Sr. Staff Nurse
Nora H. Weand	Sr. Staff Nurse
Vacant (4)	Sr. Staff Nurse
Margaret M. Dewar	Medical Technician, Laboratory
**Josephine A. Denby	Sr. Staff Nurse
Vacant (1)	Jr. Staff Nurse

Business Enterprises Section

Walter W. Honderich

Business Enterprises Supervisor

Community Activities Section

Vacant

Community Activities Supervisor

Welfare Section

Claud H. Pratt

Vacant (2)

Vacant (6)

Vacant (1)

Acting Counselor

Asst. Counselor

Jr. Counselor

Secretary

OPERATIONS DIVISION

Roscoe E. Bell

Assistant Project Director

Agriculture Section

W. Wendell Palmer

William C. Farrell

Alden S. Adams

George L. McColm

Vacant (1)

Chief of Agriculture

Farm Superintendent

Asst. Farm Superintendent

Asst. Farm Superintendent

Foreman Mechanic

Engineering Section

Henry R. Watson

Sr. Engineer

Irrigation, Drainage, & Roads Unit

Clyde F. Tervort

John W. Fullmer

Evan A. Johnson

John Hersleff

**John A. Delapp

Irrig., Drainage & Roads Supt.

Chief Construction Foreman

Chief Construction Foreman

Sr. Construction Foreman

Dragline Operator

Construction & Maintenance Unit

Lawrence B. Taylor
Milton P. Greaves
Reuben K. Davies
Wayne Sutton
Vacant (1)
Owen M. Harmon
E. Eugene Gardner
J. Frank Hopkins
Leon E. Dobson
Kenneth Mechem
Leonard A. Wood
Elwood M. Mortensen

Constr. & Maint. Superintendent
Asst. Constr. Superintendent
Electrical Engineer
Sanitary Engineer
Asst. Construction Engineer
Sr. Foreman Mechanic
Sr. Foreman Mechanic
Sr. Carpenter Foreman
Foreman Mechanic
Carpenter Foreman
Carpenter Foreman
Sr. Mechanic

Design and Drafting Unit

No appointive personnel

Motor Transport & Maintenance Section

Clifford L. Purcell
Robert M. Snyder

Ivan Sorensen
Vacant (1)
Vacant (2)
Vacant (1)
Theodore A. Dennison

Equipment Maintenance Supervisor
Asst. Equipment Maintenance
Supervisor
Actg. Motor Pool Supervisor
Blacksmith Foreman
Foreman Mechanic
Mechanic
Heavy Duty Truck Driver

Fire Protection Section

Samuel V. Owen
Willie B. Miller

Fire Protection Officer
Asst. Fire Protection Officer

Industry Section

No appointive personnel

ADMINISTRATIVE MANAGEMENT DIVISION

Vacant

Assistant Project Director

Finance Section

Gilbert L. Niesse

Finance Officer

Budget & Accounts Unit

Doren B. Boyce
Richard O. Marstella
Earl C. Murray
Edward Barrett
Vacant (1)
Joseph M. Jones
Vacant (1)
Mervin A. Bosh

Fiscal Accountant
Asst. Fiscal Accountant
Acting Auditor
Assistant Auditor
Jr. Fiscal Accountant
Fiscal Accounting Clerk
Fiscal Accounting Clerk
Audit Clerk

Cost Accounting & Property Control Unit

Campton D. Gooding	Cost Accountant
Vincent R. Gonzales	Asst. Cost Accountant
John W. Orton	Jr. Cost Accountant
Melvin H. Robins	Property Officer
Jerold S. Bennett	Acting Storekeeper
Vacant (1)	Cost Accounting Clerk
Shelton T. Barlow	Asst. Storekeeper
Laurence R. Jones	Asst. Storekeeper
Samuel L. Knight	Asst. Storekeeper
Albert L. Skidmore	Asst. Storekeeper
George A. Weber	Asst. Storekeeper
Cleo D. Bishop	Property Clerk

Evacuee Property Section

Gladstone V. Morris

Evacuee Property Officer

Personnel Section

George H. Lafabregue
William J. Campbell
Vacant (1)
Melvin E. Rantala
**Verna L. Murray

Personnel Officer
Actg. Asst. Personnel Officer
Personnel Technician
Personnel Transactions Officer
Personnel Clerk

Office Services Section

Eralia V. Gonzales
Norma H. Skeem
Johnnie Miller
Heber G. Bishop
Dorothy I. Roden

Office Manager
File Clerk
Supervising Telephone Operator
Telephone Operator
Telephone Operator

Supply Section

Roy Potter

Supply Officer

Mess Management Unit

Brandon E. Watson
Carl L. Rogers
Vacant (1)
Roy P. Stahl

Steward
Assistant Steward
Assistant Steward
Storekeeper

Procurement Unit

William W. Hunter
William A. Roden

Procurement Officer
Asst. Procurement Officer

Postal Service Unit

No appointive personnel

Statistics Section

Vacant (1)

Statistician

** Temporary Appointments