

N 1.70

67/14
C

WAR RELOCATION AUTHORITY

Memorandum

Jerome W. Files
WAR RELOCATION AUTHORITY
COMMUNITY ANALYSIS SECTION
Japanese Relocation Papers
Bancroft Library

To: Mr. John Embree

Date: May 10, 1943

From: Edward B. Marks, Jr.
Community Activities Adviser

The following is quoted from the section on Religion of the Jerome quarterly report, January to March, 1943.

"The young Buddhists association, organized January 31, elected its board of directors on February 29. On March 7, three members of the board resigned because of difference of opinion concerning the registration program. These three, with their leader and his other followers, formed a separate Buddhist movement called the Daijo Buddhist Church. The meetings of this group, referred to by other Buddhists as the Repatriation Group, are more or less secretive, with average attendance of from 200 to 500."

In the Tule Lake report for the same period there was a breakdown ^{the} of religion of 3975 evacuees - a sample of 25% of the total project population. The breakdown shows the following religious adherances: Buddhists, 2673; Catholics, 29; Shinto, 16; Protestants, 823; unanswered, 31; no religion, 403.

According to the breakdown, two of the sixteen Shintoists are American born. One of these is less than 14, the other over 14. All 14 of the foreign born Shintoists are over 14.

EBM

WAR RELOCATION AUTHORITY
COMMUNITY ANALYSIS SECTION

Manzanar -

*Mr. P. P. [unclear]
Mr. [unclear]
Mr. [unclear]*

REPORT ON MASAO SATOW'S VISIT
(Narrative report, Community Activities Division)
From Aug. 12 to Aug. 19

Masao Satow, national secretary of the YMCA for work with Japanese Relocation Centers, in his seven-day visit to Manzanar, met with and spoke to various groups including: the staff of the Community Welfare Department, "Y" board of directors, Hi-Y group, YW and YM staffs, Y.P. fellowship, Y's Men's Club, and Club council.

Mr. Satow also visited friends in camp and the hospital. Aiji Hashii took him on a tour of the production plants in Manzanar. Mr. Satow also went out to inspect the farms.

Some of Mr. Satow's suggestions were:

1. The "Y" board of directors should guide more directly the activities of the "Y". To do so efficiently, the board should be divided into committees.
2. Group work is helpful to better social organization.
3. Formation of a leadership training class is desirable.
4. The "Y" should cooperate and collaborate with various camp agencies in regard to children and youth problems. All clubs or gangs should be properly advised by competent leaders.
5. Mr. Satow stressed strongly his feeling on family ties. The need for parents to realize the necessity of better understanding between them and the children was emphasized.

AMERICAN RED CROSS

The Manzanar unit of the American Red Cross has received 108 citizen messages from Japan for residents of Manzanar. Three of these were answers to similar messages sent from here.

The Manzanar YWCA had an important 4-day visit from Miss Winnifred Wygal, director of religious education for the national board of the YWCA. She addressed groups in the Department of Adult Education, church groups, and has training sessions for staff and board of the YWCA.

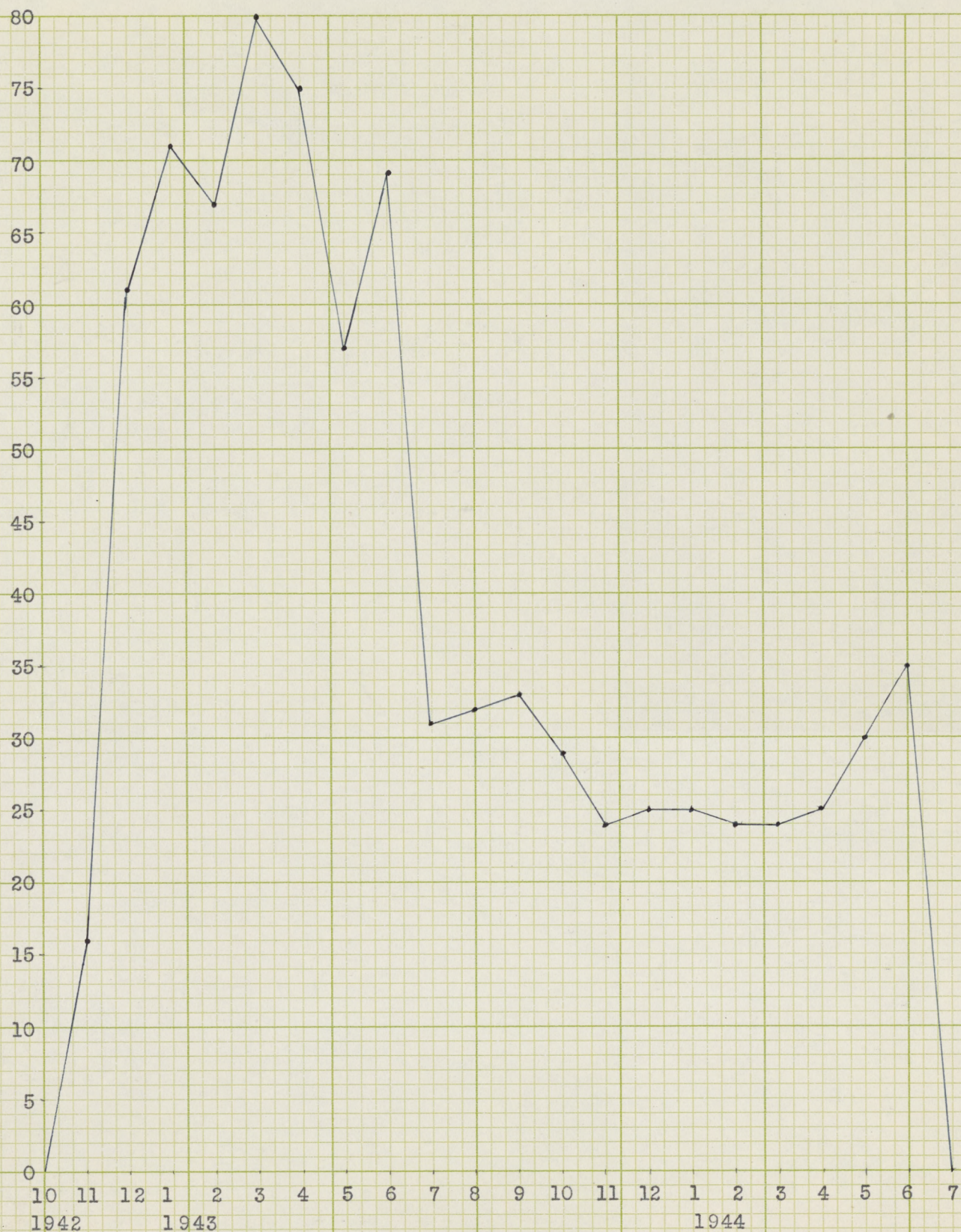
The YMCA in Manzanar was visited by Masao Satow now national secretary of the YMCA for work with Japanese Relocation Centers. He concentrated upon staff and board of the YMCA, and met with other groups in the camp for discussion on relocation.

The Y's Men's Service Club for Manzanar was organized.

This probably explains that unsigned report on Manzanar by a YWCA official.

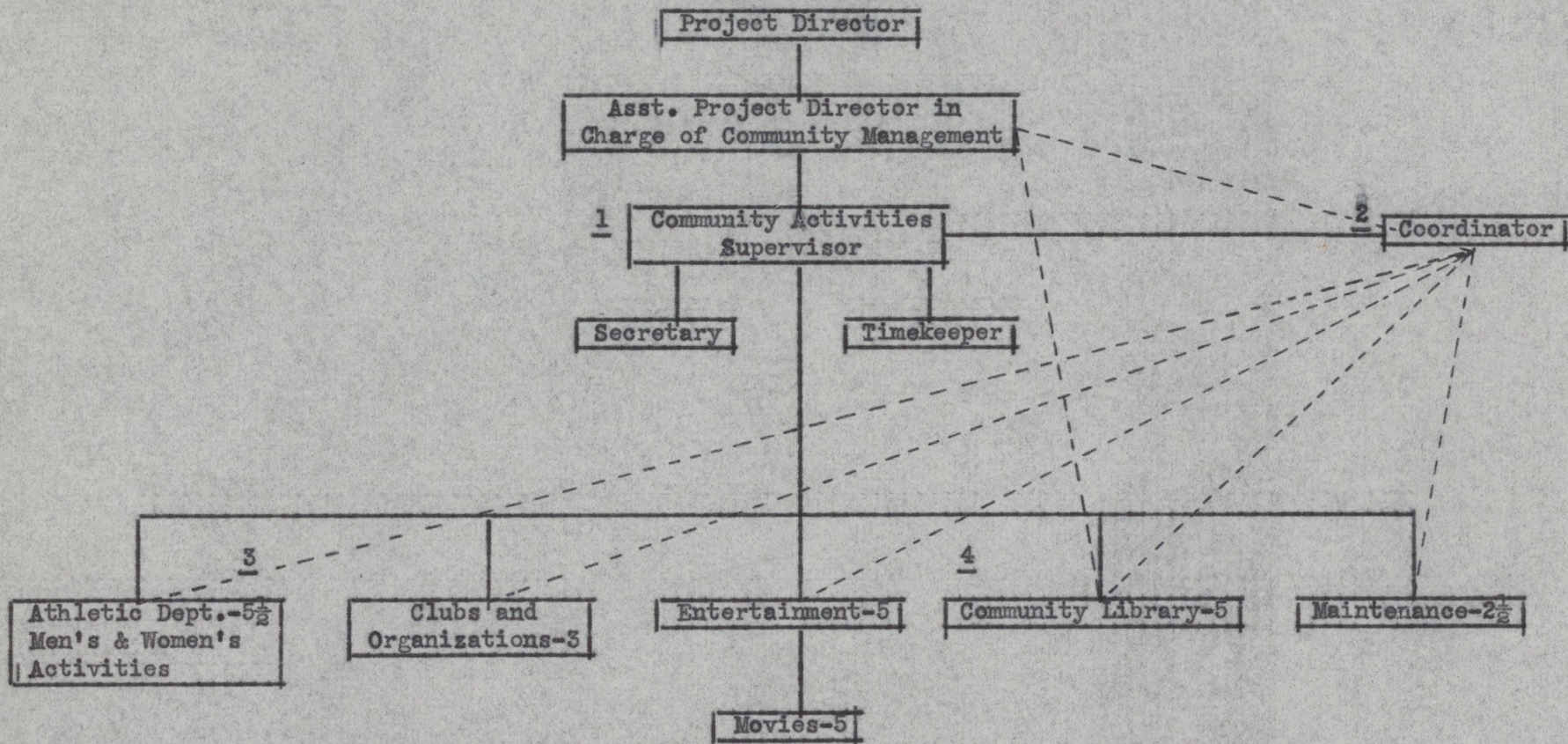
EPH

COMMUNITY ACTIVITIES-EVACUEE PERSONNEL



Figures as of first of each month

FINAL ORGANIZATION OF COMMUNITY ACTIVITIES SECTION



1. Evacuee acting supervisor from Oct. 1, 1943.
2. Evacuee position created March, 1944.
3. Evacuee employees in unit.
4. The Library was responsible both to Community Activities and to the Education Section, and, therefore, actual supervision was directly through the Division Head. However, Community Activity funds provided half of the staff, maintenance, and book fund.

JEROME RELOCATION CENTER
DENSON, ARKANSAS

Jerome
JEROME RELOCATION AUTHORITY
COMMUNITY ANALYSIS SECTION

March 9, 1943

TO: DILLON S. MYER, DIRECTOR

REPORT: QUESTIONNAIRE ON COMMUNITY ACTIVITIES

A. Over-all Planning

1. Community Council does not have a committee on community activities.
2. The various unit leaders in the Community Activities Section constitutes the over-all planning body.
3. Block representatives for Community Activities have been designated to stimulate and guide Community Activities within the block.

B. Staff

1. (a) G. F. Castleberry, Community Activities Supervisor.
There are no other WRA appointed personnel assigned to Community Activities.
- (b) Evacuees with job titles and main responsibility for the Community Activities program are as follows:
 1. Entertainment unit: Sam Seno, Director, Salary--\$19.00
The responsibility of this unit is to provide entertainment programs upon district-wide or community-wide basis. These programs are divided into two main groups. Group 1 for the "issei" and Group 2 for the "nisei". The issei programs are held regularly on a district basis throughout the Center and are under the immediate direction of Francis T. Kinishi, assisted by Riichi Kayamoto and Kyujiro Matsumoto. Volunteer talent is recruited, and programs are regularly scheduled--one each week. The "nisei" programs are talent shows, musical reviews, dances, songfest, special talent, etc. These programs are also regularly scheduled upon a district basis and are under the direction of Juichi Kamikawa, assisted by Edwin Funahashi and Jack Sakai. All talent and participants are upon a voluntary basis.
 2. Adult social activities: Al Tsukamoto, Director, Salary--\$19.00
Adult social activities are organized under the blocks and consist of "go", "shogi", checkers, ping-pong, bridge, hobby interest, adult social clubs, etc. The direction and organization of these activities is through the block representatives.

3. Clubs and Organizations: Henry Murayama, Director, Salary--\$19.00
Field representatives for boys--Paul Saito and Mas Ito
Field representatives for girls--Mrs. Al Tsukamoto
and Yoshiko Nakamura
4. Music and Drama: Frank Tashima, Director, Salary--\$16.00
This unit has a band whose responsibility is to give concerts, musical programs upon a district-wide basis on a regular schedule for the benefit of the Evacuees.
5. Men's Athletics: Shig Tokumoto, Director, Salary--\$19.00
This unit has the responsibility of organizing, directing, and supervising all athletic activity programs for men and boys of the Center. Basketball leagues have been formed. One hall was assigned as a boxing gymnasium, weight-lifting and body-building, with one paid employee in charge; one hall to "judo" with three paid employees assigned as instructors. Classes in "judo", boxing, and body-building are held daily throughout the week in the afternoons and evenings.
6. Women's Athletics: Bessie Nakashima, Director
Salary--\$19.00
Assistant, Kiyoko Watanabe, Salary--\$16.00
Responsibility of this unit is to organize, supervise, and direct the athletic program for women and girls of the Center. The athletic program to date consists of a volleyball league, basketball league, and a class in physical culture, conducted in cooperation with the schools.
7. Operations Unit: Ed Tsukimura, Foreman, Salary--\$16.00
This unit has an operation crew of three men and the foreman, whose responsibility it is to prepare grounds, haul supplies, assist in making equipment, etc. to facilitate the activity program.
8. Office, stock room, and supply: Mary Sato, Secretary, Salary--\$16.00
Stock room clerk, Buddy Kasai, Salary--\$16.00
Timekeeper, George Omatsu, Salary--\$16.00
Office services, typist, draftsman, artist, etc., Aiko Iwataki, Masaye Masuda, Yoshiko Shiotsu, Salary--\$16.00
The responsibility of this unit is to take care of office detail, necessary typing, make reports, assist in posters, advertising, reporting, etc.
2. Total number of evacuees assigned at present full-time to Community Activities is 79.

<u>3. Type of Assignment</u>	<u>Number Assigned</u>
Instructors and activity leaders	33 at \$16.00
Athletics	2 at \$19.00
	7 at \$16.00
Community Entertainment	1 at \$19.00
	6 at \$16.00
Boys' and Girls' work)	1 at \$19.00
clubs)	4 at \$16.00
Clerical	3 at \$16.00
Maintenance of supplies, buildings,	
grounds, and equipment	4 at \$16.00
Scheduling of activities)	3 at \$16.00
publicity)	
Others	15 at \$16.00

4. No evacuees assigned on a part-time basis in the community activity program.

5. (a) All Boy and Girl Scout Activities, YMCA, YWCA, YMBA, ex-service men, and church and religious clubs affiliate with and assist the Community Activities Program upon a voluntary basis.
- (b) Approximately seven WRA appointed personnel from the school group and from other younger WRA appointed personnel have given voluntary assistance in the Community Activities Program.
- (c) Some of the tasks performed by these people are assisting in musical programs during the Christmas holidays, officiating at football and basketball games, advisors for boys' and girls' clubs, and for Boy Scouts.

C. Financing

1. Community Activity program has been financed largely by WRA up to date. Some athletic equipment has been purchased from WRA funds; lumber and materials furnished by WRA to build ping-pong tables, bridge tables, teeter boards, swings, sand boxes. Part of the cost of the public address system has been borne by the evacuee upon a voluntary basis. Money has been raised within the block to purchase needed supplies and equipment for the block recreation program.
2. No recreation activities have been sponsored or paid for by Consumer Enterprise, other than moving pictures which are just starting and have been shown in only a few blocks with a 16 millimeter projector.

D. Buildings

1. There are thirty-six recreation buildings in this Center.
2. The use of each of the recreation buildings in the project is shown on the attached map. Exhibit A.
3. Occasionally the mess halls in the blocks are used for Community Activities program such as "issei" programs, Community sings, etc.
4. It is not anticipated that additional space for community activities will be available in the near future.

E. Equipment

1. (a) Principal recreational equipment provided by WRA is boxing gloves, punching bags, footballs, basketballs, volleyballs, basketball rings, softballs, softball bats, baseballs, baseball bats, and catchers' equipment.
(b) There was no recreational equipment brought from the assembly centers.
(c) Some boxing equipment was loaned by evacuees and many evacuees have contributed or loaned ping-pong sets, card tables, cards, puzzles, etc.
(d) No equipment has been loaned or contributed by WRA appointed personnel.
(e) No equipment has been purchased from funds derived through admissions to movies, dances, etc., however, quite a bit of equipment has been purchased by evacuees for recreational use within their own individual block.
(f) Ping-pong sets and puzzles were contributed by groups from the outside during the Christmas season.
2. There is a sixteen millimeter sound movie projector available for use on the project and plans are now being developed for Consumer Enterprise to show movies upon a regular schedule for the Center.
3. Three public address systems owned by evacuees have been rented by WRA and are available for Community Activities.
4. Approximately one hundred sewing machines are available and in good repair and are used by the Welfare Department and by the public schools. Only two sewing machines are used by Community Activities and these are used to make and repair GYM suits, judo suits, and etc., the material furnished by the evacuees.

5. Basic recreation equipment needs are swings, teeter boards, slides, and playground equipment for little folks; baseball and softball equipment for the younger groups; tables, ping-pong, dart boards, card games, etc. for the older group. Equipment for woodworking and shop work, mainly, small tools; additional space in buildings for recreational needs; a large auditorium or building to seat more people; a recreational library; a mimeograph machine to mimeograph programs, schedules, and Community Activities bulletin.

F. Membership in National Organizations

1. (a) Boy Scouts of America
 - (b) Four troops, 170 members
 - (c) Established in December, 1942
 - (d) Organization was organized on the project with the assistance of Mr. Oral Smith, Scout Executive from El Dorado, Arkansas, and Dr. Joe Sasaki and Tom Okano, evacuees, with scout experience and training.
 - (e) Group is financed by voluntary contribution and membership fees.
 - (f) Activities carried on by Boy Scouts are similar to those everywhere, within the limitations of restricted travel.
 - (g) Group is affiliated with the De Soto Council, Boy Scouts of America, El Dorado, Arkansas. Charter has been issued.
 - (h) Mr. Oral Smith, Scout Commissioner, De Soto Council, Boy Scouts of America, El Dorado, Arkansas.
 - (i) Field service by this representative has been available to us as a part of his regular duties. However, the Jerome District was not established and was not taken into consideration when the budget of the De Soto Council was made up. It is a considerable drain upon the budget of the De Soto Council for the field representative to visit this project due to the distance that he has to travel and the cost.
-
- (a) Young Women's Christian Association (YWCA)
 - (b) Number of members 85.
 - (c) Established approximately January, 1943.
 - (d) Local group organized largely through the effort of Miss Briesmiester from the Denver, Colorado, YWCA office.

- (e) Financed by voluntary contributions
- (f) Regular YWCA work.
- (g) The group has contacted the Denver YWCA organization.
- (h) Miss Briesmiester; home office, Denver, Colorado; purpose of visit, to organize YWCA.
- (i) Field service is not available on a regular basis.

2. List of organizations not yet active for which the cooperation of the Washington Office is needed and requested: American Legion, Girl Scouts of America.

*G. See attached report on Clubs and Organizations.

H. Special Programs

During the Christmas holidays, the Community Activities Section sponsored a group of carol singers who sang Christmas carols throughout the camp in the various mess halls the night before Christmas. This group of trained voices was directed by Miss Austin, the music teacher in the high school, assisted by Sam Seno, entertainment director for Community Activities. A schedule was worked out, a bus transported the singers from hall to hall where stops were made, carols sung to the people of the blocks who had waited patiently for the appearance of the carol group. In all, twelve stops were made, and it was estimated that approximately ninety-five per cent of the centers population heard the carol singers. The last appearance of the carol singers was at 1:00 A. M. on Christmas morning, singing outside the police headquarters for the benefit of the military police stationed at this Center.

Another special program sponsored by Community Activities that deserves special comment was the "Vargettes", a musical review, by the entertainment unit of Community Activities. This musical review, "night club", and floor show appeared two consecutive nights, both evacuee and appointive personnel attending.

* All Clubs organized in this Center are Youth Clubs.