

56:6

Poets and Writers, Inc.

1977 - 86, n.d.

2001 HILL STREET  
LOS ANGELES, CA 90012  
TEL: 213-462-1111  
FAX: 213-462-1112  
(P.O. BOX 1000)

86/97c



# Poets & Writers

Galen Williams,  
Executive Director

8 August 1977

Dear Yoshiko Uchida,

Poets & Writers, Inc. is a nonprofit organization offering information services to the American writing community. We feel it is important to identify the community of poets and writers working in this country and to help those writers keep in touch with each other. We also try to stimulate employment and publishing opportunities by helping schools, editors and sponsors of readings and workshops locate the writers they would like to hire or publish. We are primarily funded by the Literature Programs of the National Endowment for the Arts and the New York State Council on the Arts.

As part of our services, we maintain an information file on over 3200 contemporary American poets and fiction writers, including their names, addresses, recent publications and work interests. Because a listing like ours can never be complete, we are always trying to reach previously unlisted authors. We came across your name through our research and are hoping you will consider applying for listing. The criteria for being listed are:

## FOR FICTION WRITERS

- 1) A book length fiction published (or forthcoming) in the United States; or 3 fictions published (or forthcoming) in 3 different United States periodicals.
- 2) You must be either a citizen or permanent resident of the United States.
- 3) You must write in English, Spanish or Native American.
- 4) High school and vanity press publications do not count as publication credit.

## FOR POETS

- 1) 10 or more poems published (or forthcoming) in 3 or more different United States literary magazines; or the equivalent number of published postcards, broadsides, posters, etc., each being counted as one poem.
- 2) You must be either a citizen or permanent resident of the United States.
- 3) You must write in English, Spanish or Native American.
- 4) Newspapers, high school and vanity press publications do not count as publication credit.

(cont'd)

201 West 54th Street  
New York City, N.Y. 10019  
Tel: (212) PLaza 7-1766

A publicly supported nonprofit organization partially funded by the  
New York State Council on the Arts and the National Endowment for the Arts



5) At least one publication must have occurred since 1960.

NOTE

Performance poets and other non-print media poets/writers must have had 10 or more pieces in at least 3 events. Documentation in the form of tapes, cassettes, films or announcements of events must also be sent to us. If your work does not fit into a specific category, please write or call us.

If you meet these qualifications, please complete the enclosed application form. You may apply for listing in either poetry or fiction, or both. If possible, we would also like to have a complete bibliography of your publications, clearly marked as to what is fiction and what is poetry. If you have some question about whether or not you qualify, or feel you ought to be considered even though you cannot yet meet the publication requirement, please fill in the application form and send us a letter explaining why you think you should be included. Once we receive your application, it will be verified by Quincy Troupe, a poet who is listed with us.

In addition to our file on authors, we have information about grants, awards, fellowships, copyright laws, taxes, writers' colonies, conferences, etc. We also publish A Directory of American Poets (1975), A Directory of American Fiction Writers (1976), and Coda: Poets & Writers Newsletter. In the enclosed flyer, our services and publications are described in more detail.

Thank you very much for completing the application form. If you have any questions or if we may be of service to you, please feel free to write or call collect at any time.

With good wishes,

*Victoria Brush*

Victoria Brush  
Research Coordinator



7,768 thru 79  
7,744 thru 22

Poets & Writers, Inc.  
201 West 54 Street  
New York, New York 10019

Yoshiko Uchida  
1685 Solano Ave., #102  
Berkeley, Calif. 94707

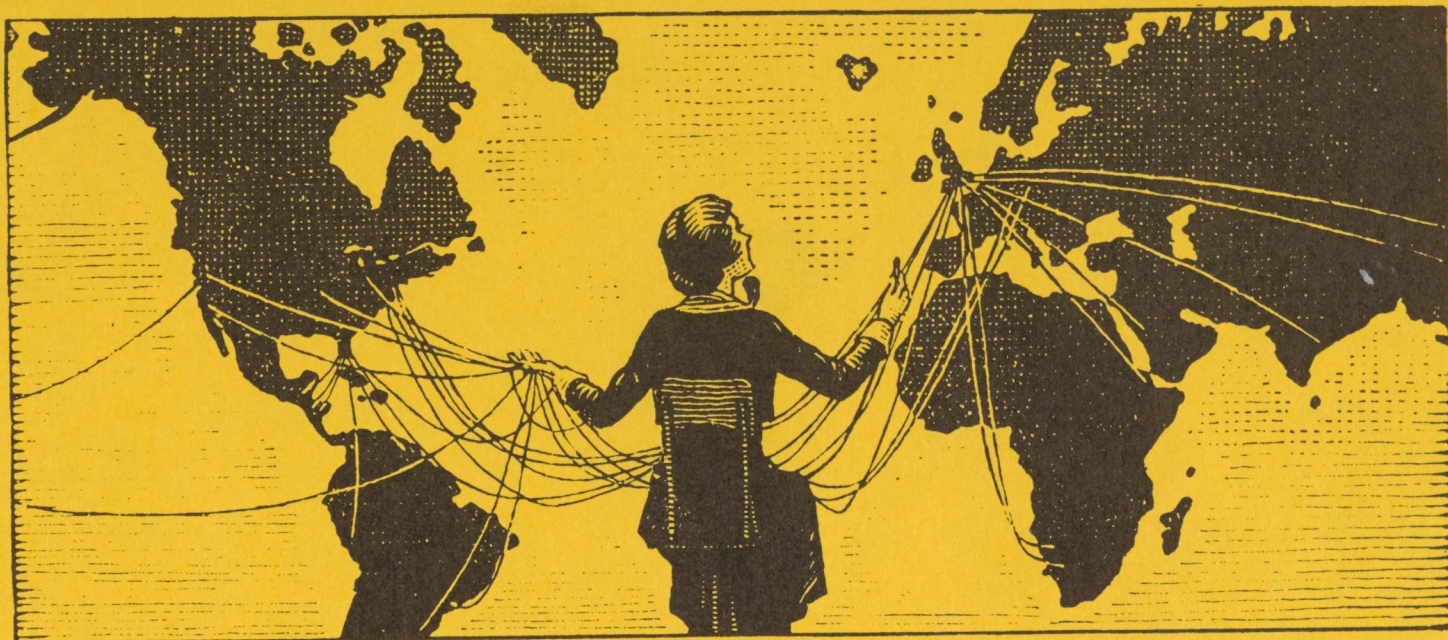
Non-Profit Org.  
U.S. Postage  
PAID  
New York, N.Y.  
Permit No. 7724



800-223-0384

Poets & Writers now has a toll-free number—see inside.





# POETS & WRITERS INFORMATION CENTER

NOW HAS A WATS\* LINE TO SERVE YOU.

If you live outside New York State, call toll-free  
**800-223-0384**

for writers' addresses and general information about the literary world. (When the line is busy, dial 800-223-0385.)

If you live in New York State, call 212-757-1766 collect.



For *Coda* subscriptions or advertising,  
the New York State Readings and Workshops Program,  
or other business, use our regular number 212-757-1766  
and dial direct for lowest rates.

\*Wide Area Telephone Service



---

Announcing three unique publications

---

# **A Directory of American Fiction Writers**

---

# **A Directory of American Poets**

---

# **Coda:** **Poets & Writers Newsletter**

---

## **Poets & Writers**

201 West 54 Street • New York, New York 10019  
(212) PLaza 7-1766



### A Directory of American Fiction Writers\*

with names and current addresses of more than 800 contemporary fiction writers whose work has been published in the United States

8½ x 11 inches, 136 pages in sewn signatures.  
Softbound \$5.00; hardbound \$10.00

### A Directory of American Poets\*

with names and current addresses of more than 1,500 contemporary poets whose work has been published in the United States

8½ x 11 inches, 132 pages in sewn signatures.  
Softbound \$6.00; hardbound \$12.00

Both Directories provide a comprehensive listing of poets and fiction writers living and working in the United States today. All writers of serious intent are eligible to apply for listing. The primary purpose of the Directories is to assist in locating these writers for readings, workshops, and other assignments. They are also useful as reference works for libraries with contemporary literature collections, and they have helped innumerable book and magazine publishers reach contemporary authors. Writers themselves use the Directories to contact each other and strengthen their sense of community in the United States.

Author entries are organized geographically by state of primary residence. Within each state grouping, authors are listed alphabetically. A separate alphabetical index of all authors is included, and the Poets Directory has an additional index of authors with specific ethnic backgrounds (i.e. Black, Spanish-speaking, Chicano, Native American, and Asian-American).

\*The Supplement, published twice a year, updates and augments Directory data while new editions are being compiled. It is sent free to purchasers of either Directory.

### 1977 Price Corrections

Reprint of Poets Listing from  
A Directory of American Poets  
(1975) available for \$3.00  
1977 Supplement will be sent  
free with purchase.

Coda, \$6.00 a year; \$1.50 single  
issue. Discount subscription  
rate for listed authors \$4.50 a  
year.

### Both Directories are divided into 3 sections:

1. For each author, the Directories supply the following information:

- ☐ Current address. Alternate addresses are included for transient authors.
- ☐ Telephone number(s)—excepting authors who have not authorized publication of this information.
- ☐ Work preferences. Interest in teaching, readings, or poets-in-the-schools programs is noted for the following grade levels: elementary, junior high school, high school, college. Experience with these levels is also indicated. Some authors specify preferences for working with such special-interest groups as drug addicts, prisoners, migrant workers, ethnic groups, and feminist organizations.
- ☐ Linguistic abilities. Speaking knowledge of foreign languages is indicated.
- ☐ Most recent book—including publisher and year of publication.

2. A listing of organizations that sponsor programs involving poets and fiction writers includes:

- ☐ Names and addresses of 500 groups that sponsor readings and workshops.
- ☐ Addresses of the 50 state arts councils.

3. The Service Section includes:

- ☐ Listings of anthologies, critical works, films, videotapes, and records of and about contemporary authors.
- ☐ Resources for creative writing teachers.
- ☐ Information about literary organizations and publications useful to writers.
- ☐ Book stores that stock poetry, fine fiction, and literary magazines.
- ☐ A practical checklist on how to organize readings and workshops.

### Coda: Poets & Writers Newsletter

News of and for the writing community today.

8½ x 11 inches, 32-36 pages.

Published five times a year.

\$5.00 a year; \$1.25 single issue

Coda reports on the contemporary literature community. It includes such topics as:

- ☐ writers colonies
- ☐ taxes and the writer
- ☐ publishing activities and opportunities
- ☐ copyright protection
- ☐ book distribution
- ☐ grants and awards
- ☐ book fairs and festivals
- ☐ writers available for readings and workshops
- ☐ services for writers, editors, publishers, etc.

### Comments about our publications:

one of the few newsletters that contains news . . . Poets read it the way bankers read The Wall Street Journal . . . a first class addition to my professional library . . . a definite link to a world I thought I'd have to pass by . . . truly what writers in this country need and haven't had before . . . a good thing to keep us writers from starving.

—from Coda readers

I'm not sure what we all did before this publication came out, but they were certainly the Dark Ages. . . . I am impressed with the magnitude of the work and the informative style. . . . I'm forever losing addresses and phone numbers and the Directory seems a completely sensible way of putting all of us in touch with each other. . . . The Directory is a beautiful tool, especially when the grapevine breaks down. . . . The discipline of teaching creative writing in America is deeply enhanced by this volume.

—from Directory users



**Poets & Writers, Inc.**  
201 West 54 Street  
New York, N.Y. 10019

\* **A Directory of American Poets, A Directory of American Fiction Writers**, and **Coda: Poets & Writers Newsletter** are distributed by the Publishing Center for Cultural Resources. Orders should be accompanied by a check or money order made payable to "Publishing Center" (cash or stamps are not acceptable). The retail prices of these publications include postage and handling. Sales tax is not applicable.

Mail all orders to:

Publishing Center  
27 West 53 Street  
New York, N.Y. 10019

Enclosed is my ☐ check ☐ money order

totaling \$\_\_\_\_\_ for

\_\_\_\_\_ subscriptions to

**Coda: Poets & Writers Newsletter**  
@ \$5.00 a year

\_\_\_\_\_ copies of

**A Directory of American Poets**

\_\_\_\_\_ @ \$6.00 softbound

\_\_\_\_\_ @ \$12.00 hardbound

\_\_\_\_\_ copies of

**A Directory of American Fiction Writers**

\_\_\_\_\_ @ \$5.00 softbound

\_\_\_\_\_ @ \$10.00 hardbound

\_\_\_\_\_  
name

\_\_\_\_\_  
organization

\_\_\_\_\_  
street

\_\_\_\_\_  
city, state, and zip code

\_\_\_\_\_  
telephone

\*These publications are compiled, edited, and published by Poets & Writers, Inc. and are made possible with support from the Literature Program of the National Endowment for the Arts.

**Poets & Writers, Inc.** is a publicly supported, nonprofit, tax-exempt corporation organized for educational and literary purposes.

Non Profit Org.  
U.S. Postage  
**PAID**  
New York, N.Y.  
Permit No. 7724



P O E T S  
& W R I T  
E R S P O  
E T S & W  
R I T E R  
S P O E T  
S & W R I  
T E R S P  
O E T S &  
W R I T E  
R S P O E  
T S & W R



## Board of Directors

Galen Williams, *Chairman & President*

Arts Administrator

Frank MacShane, *Vice President*

Biographer; Chairman of Writing Division, School  
of the Arts, Columbia University

Robert Rushmore, *Treasurer*

Fiction Writer

Aaron Asher, *Secretary*

Editor-in-Chief, Farrar, Straus & Giroux, Inc.

Lisle C. Carter, Jr.

Chancellor, Atlanta University

William Cole

Anthologist; Columnist, *Saturday Review*

John Hightower

Chairman, Advocates for the Arts; Arts consultant

Honor Moore

Poet; Playwright

Frederick Morgan

Poet; Editor, *The Hudson Review*

Richard Seaver

Editorial Director, Penguin Books, Viking Penguin,  
Inc.; Director of Richard Seaver Books, Viking Pen-  
guin, Inc.

## Poets & Writers



## Poets & Writers

Poets & Writers provides information and financial assistance to help contemporary writers reach their natural audience.

☐ Writers' fees are offered for readings and workshops in New York State and advisory assistance is offered to prospective reading and workshop sponsors with support from the New York State Council on the Arts.

☐ Directories of American poets and fiction writers and an informational newsletter (*CODA*) are published by Poets & Writers with support from The Literature Program of the National Endowment for the Arts.

☐ In addition, Poets & Writers works to broaden the audience for contemporary writing with help from the New York State Council on the Arts and the National Endowment for the Arts, foundations, corporations, and individuals.

*Please call or write for further information:*

Poets & Writers, Inc.

201 W. 54 Street

New York, New York 10019

Telephone: (212) PLaza 7-1766

Galen Williams, *Executive Director*

## Readings-Workshops Program

The Readings/Workshops program helps pay fees for poets, fiction writers, and playwrights to give readings and/or conduct workshops at nonprofit organizations in New York State. Any nonprofit organization may apply: colleges, universities, libraries, museums, Y's, parks departments, religious organizations, special interest and community groups.

Financial assistance for a program is generally given to an organization on a matching basis. These funds are for writers' fees only; they cannot be used for administration or other expenses relating to the program. Fees vary and are often negotiable. The minimum amount granted per event is \$25 and the maximum is \$300.

Writers eligible to receive support from Poets & Writers, Inc. are listed in the Directories described on the following pages—*A Directory of American Poets* and *A Directory of American Fiction Writers*. These publications serve as valuable resources for sponsors and help them explore new programming ideas. If writers not listed in the Directories wish support, they should call or write us since the Directories are constantly expanding.

The staff of the Readings/Workshops program is available to help with program suggestions for visiting writers. Please call or write for financial assistance.

The following information checklists are available at no charge:

- ☐ Checklist for Organizers of Readings and Workshops
- ☐ How to Publicize Readings and Workshops

*This program is made possible with support from the New York State Council on the Arts.*



## Publications Available

**Coda:** Poets & Writers Newsletter. News of and for the writing community today. 8½ x 11 inches. 32-36 pages. Published five times a year. \$5.00 a year; \$1.25 single issue.

Coda reports on the contemporary literature community. It includes such topics as:

- ☐ writers colonies
- ☐ taxes and the writer
- ☐ publishing activities and opportunities
- ☐ copyright protection
- ☐ book distribution
- ☐ grants and awards
- ☐ book fairs and festivals
- ☐ writers available for readings and workshops
- ☐ services for writers, editors, publishers, etc.

**A Directory of American Poets**, with names, current addresses, and other valuable information for more than 1,500 contemporary poets whose work has been published in the United States. 8½ x 11 inches, 132 pages, sewn binding. \$6.00 paperback; \$12.00 hardcover.

**A Directory of American Fiction Writers**, with names, current addresses and other valuable information for more than 800 contemporary fiction writers whose work has been published in the United States. 8½ x 11 inches, 136 pages, sewn binding. \$5.00 paperback; \$10.00 hardcover.

These Directories provide a comprehensive compilation of poets and fiction writers publishing in the United States today. All poets and fiction writers who have published in book form or whose work has appeared recurrently in nationally published periodicals are eligible to apply for listing. The primary purpose of the Directories is to assist in locating these writers for readings, workshops, and other assignments. They are also useful as reference works for libraries with contemporary poetry collections, and they have helped innumerable book and magazine publishers reach contemporary authors. Writers themselves use them to contact each other and strengthen their sense of community in the United States.

Author entries are organized geographically by state of primary residence. Within each state grouping, authors are listed alphabetically. A separate alphabetical index of all authors is included, and the Poets Directory has an additional index of authors with specific ethnic backgrounds (i.e. Black, Spanish-speaking, Chicano, Native American, and Asian-American).

A listing of organizations that sponsor programs involving poets and fiction writers includes:

- ☐ Names and addresses of 500 groups that sponsor readings and workshops.
- ☐ Addresses of the 50 state arts councils.

A comprehensive Service Section includes:

- ☐ listings of anthologies, films, and videotapes of contemporary authors
- ☐ lists of resources for creative writing teachers
- ☐ information about literary organizations and publications useful to writers



- ☐ bookstores that stock poetry, fine fiction, and literary magazines
- ☐ a practical checklist to guide organizers of readings and workshops

For each author, the Directories supply the following information:

- ☐ *Current address.* Alternate addresses are included for transient authors.
- ☐ *Telephone numbers(s)*—excepting authors who have not authorized publication of this information.
- ☐ *Work preference.* Interest in teaching, readings, or poets-in-the-schools programs is noted for the following grade levels: elementary, junior high or high school, college. Experience with these levels is also indicated. Some authors specify preferences for working with such special-interest groups as drug addicts, prisoners, migrant workers, ethnic groups, and feminist organizations.
- ☐ *Linguistic abilities.* Speaking knowledge of foreign languages is indicated.
- ☐ *Most recent book*—including publisher and year of publication.

**The Supplement** updates and augments the Directories. 8½ x 11 inches. Published periodically, it is sent free to purchasers of either Directory.

*The Directories and Coda* are distributed by:

Poets & Writers, Inc.  
201 West 54th Street  
New York, New York 10019  
(212) PLaza 7-1766

Orders should be accompanied by a check or money order made payable to Poets & Writers, Inc. Prices include postage and handling. Sales tax is not applicable.

*These publications are made possible with support from the Literature Program of the National Endowment for the Arts.*



## Contributors

Poets & Writers, Inc. is most grateful for contributions from the following individuals, foundations, and corporations:

Avon Books, A Division of the Hearst Corporation  
Bantam Books, Inc.  
CBS Inc.  
Helen Meyer, *President*, Dell Publishing Company, Inc.  
Doubleday & Company  
The Ecco Press and Antaeus  
B. H. Friedman  
The Guinzburg Fund on behalf of Viking Penguin, Inc.  
Grove Press  
Harcourt Brace Jovanovich, Inc.  
Harper & Row Publishers, Inc.  
James Laughlin  
Seymour Lawrence  
Ross MacDonald  
McGraw-Hill, Inc.  
The Medwick Foundation  
Mobil Oil Foundation, Inc.  
William Morrow & Company, Inc.  
W. W. Norton & Company, Inc.  
Popular Library, a unit of CBS Consumer Publishing  
Donald Klopfer, *Chairman of the Board* and *Contributions Committee*, Random House, Inc.; Alfred A. Knopf, Inc.; Pantheon Books, Inc.  
Judith Rossner  
Charles Scribner's Sons  
Irwin Shaw  
Simon & Schuster, Inc.  
Roger W. Straus  
William Styron  
Kurt Vonnegut, Jr.

**Poets & Writers, Inc.** is a nonprofit, tax-exempt corporation organized for literary and educational purposes; donations to it are charitable contributions under section 170 of the Internal Revenue Code.

---

The publication of this brochure is made possible through a grant from the Mobil Oil Foundation, Inc.

---

Designed by Martin S. Moskof & Associates



**Poets & Writers, Inc.**

201 West 54 Street

New York, New York 10019



Poets & Writers, Inc.  
201 West 54 Street  
New York, N.Y. 10019  
(212) PLaza 7-1766

IV  
Sent 10/6/77  
+ Bibliography.  
INFORMATION FORM FOR POETS AND FICTION WRITERS

Please return all sheets. Many thanks for filling this out.

Pen Name YOSHIKO — UCHIDA  
first middle (if any) last

Your Public Address is the one we would list in our directories. If you do not want a telephone number listed in our directories, leave that space blank.

Would you mind if this address is included on a mailing list which is occasionally rented to other organizations? yes ☒ no ☐ (We screen their use of the list). No other lists please!!

Public Address: 40 E. Levine, Curtis Brown, Ltd.  
c/o name (if any) street/or box & station  
575 Madison Ave, New York, NY. 10022  
city state zip code  
PL 5-4200  
area code telephone number extension (if any)

All of our mailings will go to your Private Mailing Address, if it is different from the above address.

Would you mind if this address is included on a mailing list which is occasionally rented to other organizations? yes ☒ no ☐ (We screen their use of the list). No other lists please.

Private Mailing Address: 1685 Solano Ave #102  
c/o name (if any) street/or box & station  
Berkeley, Calif. 94707  
city state zip code

If you did not include a telephone number with your Public Address (or if the number you gave is an institutional, publisher's, or agent's number), may we have your personal telephone number for our use only.

(415) 524-1152  
area code telephone number extension (if any)

If your Home Address is different from either of the above addresses, would you please write it below. This is for our use only: it will not be publicly listed and no mail will be sent here.

street/or box & station city state zip code

If you move frequently, or if you are planning to move within the next year, would you give us the name, address, and telephone number of someone who would know your whereabouts. This is for our use only: it will not be publicly listed and no mail will be sent here.

c/o name area code telephone number ext. (if any)

street/or box & station city state zip code

(continued on reverse side)



If you are a writer of genre fiction, please indicate (up to two choices) which of the following categories best applies to your work.

- A. ☐ western  
 B. ☐ science fiction/fantasy  
 C. ☐ historical  
 D. ☐ romance, gothic  
 E. ☒ juvenile (ages 12 and over)  
 F. ☐ adventure  
 G. ☐ mystery, crime, suspense

H. ☐ If you are primarily a performance, multi-media, or other non-print media writer, please check H. and briefly describe your work.

2. A. ☐ If you are particularly interested in giving public readings, check A.

3. Would you wish to be listed as especially interested in teaching, reading, or lecturing with any specific groups? You may choose up to four of the following, or check X. Rank them in order of priority (1 = first choice, etc.)

- B. ☐ all levels (ages 5-college)  
 C. ☐ college level students  
 D. ☐ secondary level (ages 11-18)  
 E. ☒ elementary level (ages 5-11)  
 F. ☐ senior citizens  
 G. ☐ hospital patients  
 H. ☐ prisoners  
 J. ☐ drug rehabilitation groups  
 K. ☐ migrant workers  
 L. ☐ all of the above (F through K)  
 M. ☐ other (please specify) \_\_\_\_\_

4. Would you wish to be listed as especially interested in working with any of the following minority or special interest groups? Indicate up to three, or check J.

- A. ☐ Black  
 B. ☐ Hispanic/Latino  
 C. ☐ Puerto Rican  
 D. ☐ Chicano  
 E. ☐ Asian American  
 F. ☐ Native American  
 G. ☐ Feminist  
 H. ☐ Gay  
 J. ☐ all  
 K. ☐ other (please specify) \_\_\_\_\_

5. Would you wish to be listed as a member of any of the following minority or special interest groups? Indicate up to three.

- A. ☐ Black  
 B. ☐ Hispanic/Latino  
 C. ☐ Puerto Rican  
 D. ☐ Chicano  
 E. ☒ Asian American  
 F. ☐ Native American  
 G. ☐ Feminist  
 H. ☐ Gay  
 J. ☐ other (please specify) \_\_\_\_\_

6. Indicate up to three of any of the following languages in which you are fluent.

- A. ☐ French  
 B. ☐ German  
 C. ☐ Spanish  
 D. ☐ Italian  
 E. ☐ Yiddish  
 F. ☐ Swedish  
 G. ☐ Dutch  
 H. ☐ Chinese  
 J. ☒ Japanese  
 K. ☐ Russian  
 L. ☐ Hebrew  
 M. ☐ Arabic  
 N. ☐ Portuguese  
 P. ☐ Turkish  
 Q. ☐ Modern Greek  
 R. ☐ Ancient Greek  
 S. ☐ Latin  
 T. ☐ Native American Languages (specify) \_\_\_\_\_  
 U. ☐ African Languages (specify) \_\_\_\_\_  
 V. ☐ Slavonic Languages (excluding Russian, specify) \_\_\_\_\_  
 W. ☐ Scandinavian Languages (excluding Swedish, specify) \_\_\_\_\_  
 X. ☐ Indian Languages (specify) \_\_\_\_\_  
 Y. ☐ other (specify) \_\_\_\_\_

(continued on next page)



Poets & Writers, Inc.  
201 West 54 Street  
New York, N.Y. 10019

INFORMATION FORM FOR POETS AND FICTION WRITERS LISTING

Pen Name Yoshiko Uchida

Date of Birth 11/24/21 (for our use only).  
month/day/year

Social Security Number 133-26-7281 (This information is for groups that need your social security number when writing you a check. Having it on file saves time, for both the sponsors and yourself).

FOR POETS ONLY:

If you are applying for Directory listing, please list the titles of ten of your published poems and the literary magazines (including issues and editors) in which they appear. To apply you must be able to list ten poems and at least three different magazines. Include accepted, forthcoming work, if you wish.

	<u>TITLE OF POEM</u>	<u>NAME OF MAGAZINE</u>	<u>ISSUE</u>	<u>EDITOR</u>	<u>YEAR OF PUBLICATION</u>
1.					
2.					
3.					
4.					
5.					
6.					
7.					
8.					
9.					
10.					

What is the title, publisher, and year of publication of your latest book of poetry? Please list a forthcoming book, if you wish.

FOR FICTION WRITERS ONLY:

What is the title, publisher, and year of publication of your latest book of fiction? Please list a forthcoming book, if you wish.

"Samurai of Gold Hill", Chas. Scribner's, 10/72

size of book 8 1/2 x 6 number of pages 119 glued? ☐ stapled? ☐ hardcover? ☒ paperback? ☐

Please list the titles of three published fiction pieces and the magazines (including issues and editors) in which they appeared. Include accepted, forthcoming work, if you wish.

	<u>TITLE OF FICTION PIECE</u>	<u>NAME OF MAGAZINE</u>	<u>ISSUE</u>	<u>EDITOR</u>	<u>YEAR OF PUBLICATION</u>
1.	<u>"The Bracelet"</u>	<u>2 Scribner Anthology</u>			<u>1976</u>
2.	<u>"I Feel Much Better Now"</u>	<u>SENSE - Scott Rosenberg Lit. Anthology</u>			<u>1977</u>
3.	<u>"Oh Broom Get to Work"</u>	<u>IMAGE -</u>	<u>"</u>	<u>"</u>	<u>"</u>

→ "JOURNEY HOME" - prob. pub. date 1978.



# Poets & Writers

Galen Williams,  
Executive Director

15 November 1977

Dear Yoshiko Uchida,

Our screener has considered your application for listing with Poets & Writers, and we are pleased to announce that you have been accepted for listing as:

☐ a poet  
☒ a fiction writer  
☐ both

Your listing is now a part of our Information Center and is currently available via our free telephone information service. Enclosed you will find a flyer describing this service. Your listing will also be published in our next directory which is scheduled for 1979. As we approach publication deadline we will send you forms so you can update your listing for the directory. In the meantime, if you have any changes of address, phone number, work interest, new publications, etc., please let us know.

In addition to listings of poets and fiction writers, our Information Center has general information on file about other topics of interest to the writing community--grants, awards, fellowships, copyright laws, taxes, writers' colonies, conferences, etc. You are eligible to subscribe to Coda: Poets & Writers Newsletter at the reduced rate of \$4.50 per year. If you would like a notice or announcement printed in Coda or in our new bulletin Dispatch, just send us the information.

Sincerely,

Steve Hamilton

Victoria Brush

Steve Hamilton & Victoria Brush  
Information Center Coordinators

Enclosures

201 West 54th Street  
New York City, N.Y. 10019  
Tel: (212) PLaza 7-1766

A publicly supported nonprofit organization partially funded by the  
New York State Council on the Arts and the National Endowment for the Arts



1685 Solano Ave., #102  
Berkeley, Ca. 94707  
August 26, 1981

Editor, Poets & Writers' Directory  
201 West 54th St.  
New York, N.Y. 10019

Dear Sir:

Since I have left Curtis Brown Agency, 575 Madison Ave.  
please change my "public address" from the above  
to: Atheneum Publishers, 597 Fifth Ave., New York,  
N.Y. 10017

My private mailing address remains the same  
as shown above.

Thank you for your prompt attention to  
this matter.

Sincerely,

Yoshiko Uchida



# Poets & Writers

## Board of Directors

Galen Williams  
Founder and Chairman

William Kistler  
President

Lynne Alvarez  
Vice President

Ellen Joseph  
Secretary

Timothy Seldes  
Treasurer

Donald Everett Axinn

William Cole

Frank T. Crohn

Mary Sharp Cronson

E.L. Doctorow

Helen Handley

Gloria Jones

Erica Jong

June Jordan

Wendy Larsen

Audre Lorde

Frank MacShane

Honor Moore

Joanna Rose

Jeannette Seaver

Richard Seaver

## Friends of Poets & Writers

Louise Espy  
Co-President

Susan Marvin  
Co-President

Beverly Jablons  
Vice President

Robert Rushmore  
Vice President

Joan Axinn  
Secretary

Executive Director  
Elliot Figman

201 West 54th Street  
New York City, N.Y. 10019  
Tel: (212) PLaza 7-1766

September 17, 1982

Dear Author,

We are pleased to inform you that next year we will publish a new edition of A Directory of American Poets and Fiction Writers, which will include more than 5400 poets and fiction writers. We need your help to insure that the information listed under your name is accurate. Please take the time now to complete the enclosed form and return it to us in the envelope we have provided.

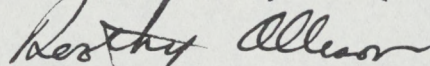
The deadline for returning this information to us is October 15, 1982. Without this update form, we can not insure that your most recent publications and current address will be listed.

Due to budget restrictions, the new Directory will have limited space in which to list each author's publications. In most cases, this space will be sufficient for two book titles, including publisher and year of publication, and one or two magazines. We prefer that you choose the books you think most important. If you wish, you may enclose further information to be added to your file, but only those titles listed in the ninety character spaces on the enclosed form will appear in the Directory. Information about genre, work preferences, minority affiliation and languages spoken will not be published in the Directory, but will be kept on file in our Information Center and will be available to inquirers.

The Directory is used by publishers, writers, agents and literary organizations to locate writers for readings and workshops and to review their recent work. It will be available to listed writers at a discount rate. Please make sure that you will be listed accurately by returning your form to us today.

If you have any questions about the Directory or about Poets and Writers, Inc., please write or call us. The Information Center is open from 11 a.m. - 3 p.m. EST, every day Monday through Friday.

With best wishes,



Dorothy Allison  
Director, Information Services



Author's Update Form: Fall 1982

9/24/82

Poets-Whites-

Yoshiko Uchida

1685 Solano Ave., #102

Berkeley, Calif. 94707

(415) 524-1152

Phone # in Directory? - Prefer not  
Agent? - No.

Publications: within 90 spaces.

D E S E R T   E X I L E   ( U N I V .   W A S H I N G T O N  
P R E S S ,   1 9 8 2 ) ,   J A R   O F   D R E A M S   (  
A T H E N E U M ,   1 9 8 1 )



Sept. 24, 1982

TO: Dorothy Allison  
FROM: Yoshiko Uchida

Additional information for files:

The full title of DESERT EXILE is:

DESERT EXILE: THE UPROOTING OF A JAPANESE  
AMERICAN FAMILY.

It deals with the WWII uprooting and incarceration of all the Japanese on the West Coast, and specifically with my own family's experiences during that time.

A JAR OF DREAMS is a title for young people.

All my recent ~~material~~ <sup>writing</sup> is about the Japanese American experience in California.



# Poets & Writers

## Board of Directors

Galen Williams  
*Founder and Chairman*

William Kistler  
*President*

Lynne Alvarez  
*Vice President*

Ellen Joseph  
*Secretary*

Timothy Seldes  
*Treasurer*

Donald Everett Axinn  
Frank T. Crohn  
Mary Sharp Cronson  
E.L. Doctorow  
Helen Handley  
Gloria Jones  
Erica Jong  
June Jordan  
Wendy Larsen  
Audre Lorde  
John Marvin  
Honor Moore  
Joanna S. Rose  
Jeannette Seaver  
Richard Seaver  
Gail Sheehy  
Robin Smith

## Friends of Poets & Writers

Susan Marvin  
*President*

William Cole  
*Vice President*

Beverly Jablons  
*Vice President*

Johanna Garfield  
*Secretary*

Executive Director  
Elliot Figman

201 West 54 Street  
New York, NY 10019  
(212) 757-1766

October 15, 1984

Dear Author,

Once again, we are preparing a new edition of the Directory of American Poets and Fiction Writers. We need your help to insure that the information we provide is accurate. Please take the time now to complete the enclosed form and return it to us in the envelope we have supplied.

The deadline for returning this information to us is November 15th, 1984.

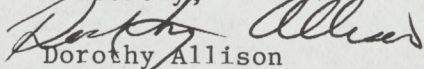
If we do not receive your update form, your listing will appear as it did in the last edition. If you were not listed in the last Directory, we will compile your entry from your application for listing.

The Directory of American Poets and Fiction Writers will include more than 5700 poets and fiction writers, and will be organized by state. It is used by publishers, writers, agents, and literary organizations to locate writers and review their work. Because of budget restrictions, not all of the information requested on the enclosed form will appear in the Directory. While the Directory is limited to displaying only address, telephone number and recent publications, the Information Center at Poets & Writers provides supplementary information through mailing lists, printouts, and calls to our Information line.

At publication, copies of the Directory will be made available to listed writers at a reduced rate. Please make sure you will be one of those listed writers by returning your completed form to us today.

If you have any questions about the Directory of American Poets and Fiction Writers or about Poets & Writers Inc., please write or call us. The Information Center is open from 11 to 3 every day, Monday through Friday.

Sincerely,



Dorothy Allison  
Director, Information Services



Author's Update form  
Poets - Writers

~~10/31/84~~  
11/1/84

Legal name

Yoshiko Uchida

pub. name



Yoshiko Uchida

list under

Most recent pub'ns: Des. En (UCW Ph 1982)  
Jan. Dr. (atn 1981)

Yoshiko Uchida

1685 Solano Ave., #102

Berkeley, CA. 94707

(415)524-1152

(Not for pub'n)

Same as above

In addition to the above listings:

THE BEST BAD THING

1983  
~~1984~~

Atheneum/Mgt. K. McElderry Books

JOURNEY TO TOPAZ (reissue)

Jan. 1985

Creative Arts Book Co.

SAMURAI OF GOLD HILL (reissue)

Jan. 1985

Creative Arts Book Co.

Reverse: Work Interest ☒ Young adult.  
☒ Int'd in giving public (talks) - ☒ willg to hand of ex. please + honor. pr.  
☒ - elementary level student ☒ librarians, Teachers grs.  
☒ Asian Am. - Interest + ex. exp. Spec theme: The 2A experiences



# PILGRIM PLACE

A COMMUNITY OF RETIRED CHRISTIAN WORKERS

660 AVERY ROAD, CLAREMONT, CALIFORNIA 91711 714-621-9581



October 1, 1984

G. Worth George  
Executive Director

Janice R. Miller  
Assistant Director

David L. Pearce  
Director of Health Services

Nichol M. Sandoe, Jr.  
Director of Community Relations

Dear Friends:

## BOARD OF DIRECTORS

George R. Estey  
President

Helen Padelford  
Vice-President

Marjorie D. Mathews  
Secretary

David E. Martin  
Treasurer

Jean H. Aldrich  
E. Burdette Boileau  
Norman Cadman  
Peg Calhoun  
Esther Chu  
Doris Drucker  
John W. Flucke  
C. Ray Fowler  
Sue Getts  
Harland P. Goodrich  
Margaret Hathaway  
Molly A. Johnson  
Eldred C. Klute  
Edith M. Lerrigo  
Lillian P. Maguire  
Carl N. Mather, Jr.  
Harold F. McClelland  
Gordon E. Michalson  
Ednabel L. Miller  
Stanley W. Plummer  
Jane G. Sanders  
Lavinia Scott  
Birdean Smith  
Edna May Soper  
John A. Vieg  
Donald E. Webster

Olive Goodman  
Moderator, Town Meeting

You are cordially invited to join charter members of the Endowment Associates. This is a new group of friends who are sharing responsibility for increasing our endowment and building a firm future for Pilgrim Place. Charter members are those who apply for membership before January 8, 1985 - the 70th Anniversary of the incorporation of Pilgrim Place.

It is not difficult to join the Associates. Read the enclosed "Membership Information" leaflet. Then complete and mail the application form.

Already some 70 residents and Corporation members have joined this important effort. You may now be qualified by virtue of estate plans already made. Charter members will be guests at an informal dinner celebration next winter.

The need to increase our endowment is obvious. Pilgrim Place is a charitable enterprise exclusively serving retired Christian workers, most of whom live on modest incomes and savings. We must keep rents and other fees as low as possible, depending on endowment income and Annual Giving to maintain financial viability. We hope to double our present \$2,000,000 endowment by 1990. If enthusiastically supported, the new Endowment Associates program will indeed build a firm future for these wonderful residents.

While the main thrust of the Associates lies in the future, there may be those who will want to help by making gifts or pledges right away. Such gifts will be counted as Pilgrim Place matches a \$100,000 challenge grant made by The Arthur Vining Davis Foundations. Thus what you give now will be multiplied and especially valuable.

Please give this splendid opportunity your most careful consideration. Many thanks!

Sincerely,

C. Ray Fowler, Chr.  
Endowment Associates Committee



# Poets & Writers

## Board of Directors

Galen Williams  
Founding Chairman

Timothy Seldes  
President

Lynne Alvarez  
Vice President

Ellen Joseph  
Secretary

Robin Smith  
Treasurer

Donald Everett Axinn

Mary Sharp Cronson

E.L. Doctorow

Helen Handley

John W. Holman, Jr.

Beverly Jablons

Gloria Jones

Erica Jong

June Jordan

Jeremiah Kaplan

William Kistler

Wendy Larsen

Audre Lorde

John Marvin

Honor Moore

Joanna S. Rose

Jeannette Seaver

Richard Seaver

Gail Sheehy

## Executive Director

Elliot Figman

October 15, 1986

Dear Author,

Once again we are preparing a new edition of the Directory of American Poets and Fiction Writers. To insure that the information we list about you is accurate, please complete and return the enclosed update form.

The deadline for returning your updated information to us is November 15th, 1986.

If we do not receive your update form, your entry will appear as it did in the last edition. If you were not listed in the last Directory, we will compile your entry from your application for listing.

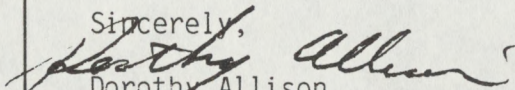
The new edition of the Directory of American Poets and Fiction Writers will include more than 6,200 poets and fiction writers. Many publishers, agents, writers and literary organizations rely on the Directory to locate writers and review their work. While the Directory is limited to displaying only address, telephone number and recent publications, the Information Center at Poets & Writers provides more extensive information through mailing lists, printouts and calls to our information line. The additional information you give us will be used to supplement your listing.

If you have any questions about the Directory of American Poets and Fiction Writers or about Poets & Writers, please write or call us. The Information Center is open from 11 am to 3 pm every day, Monday through Friday.

At publication, copies of the Directory will be made available to listed writers at a reduced rate. Please make sure you will be one of those listed writers by returning your completed form to us today.

We are very pleased to be able to include you in our next edition of the Directory.

Sincerely,



Dorothy Allison  
Director, Information Services

201 West 54 Street  
New York, NY 10019  
(212) 757-1766



Dear Author,

This is your update form for the **1987 Directory of American Poets and Fiction Writers!** Below you will find the home or private address we have listed for you, as well as your most recent publications. To insure the accuracy of your entry in the next Directory, please complete and return this form immediately.

Sequence # 005940

YOUR LEGAL NAME:

Yoshiko Uchida  
1685 Solano Ave, #102  
Berkeley CA 94707

☐

THE NAME UNDER WHICH YOU PUBLISH:

☒

same

Telephone Number: 4155241152 *(not for public.)*

Please check the name under which you wish to be listed.

Most Recent Publications: Journey To Topaz, Samurai Of G  
old Hill (Creative Book Arts, 1985, 1985) THE DANCING KETTLE *(Creative Arts Bks 1986)*

PUBLIC ADDRESS: (The address you wish listed in the Directory.)

C/O NAME, OR LITERARY AGENT, OR UNIVERSITY

same as above

STREET OR BOX AND STATION

APT. NUMBER

CITY

STATE

ZIP CODE

TELEPHONE NUMBER

May we print your telephone number in the Directory? ☐ (check if YES)

PRIVATE ADDRESS: (This is the address to which CODA will be sent, if you are a subscriber.)

C/O NAME

" " "

STREET OR BOX AND STATION

APT. NUMBER

CITY

STATE

ZIP CODE

PUBLICATIONS: (You must list publisher and year of publication for each book.)

TITLE OF BOOK

The Two Foolish Cats

1987 spring

PUBLISHER

Atheneum/Mgt K. McElderry Bks

YEAR

TITLE OF BOOK

PICTURE BRIDE

1987

"

PUBLISHER

Northland Press

YEAR

TITLES OF MAGAZINES

Please provide the information requested on the reverse side of this sheet. While we are unable to publish this information in the Directory, it will update your original application, and is routinely provided to individuals and organizations seeking information on writers for workshops, readings, employment offers, and information distribution.



# Work Interests

1. If you are a writer of genre fiction, please indicate (up to **two** choices) which of the following categories best applies to your work. IF YOU WISH TO BE LISTED WITH US AS A POET ONLY, DO NOT COMPLETE THIS SECTION.

- |   |   |  |  |
|---|---|--|--|
| A. <input type="checkbox"/> Western                 | C. <input checked="" type="checkbox"/> Historical | E. <input checked="" type="checkbox"/> Young Adult | G. <input type="checkbox"/> Mystery/Crime/Suspense |
| B. <input type="checkbox"/> Science Fiction/Fantasy | D. <input type="checkbox"/> Gothic                | F. <input type="checkbox"/> Adventure              | J. <input type="checkbox"/> Other (specify): _____ |

2. A. ☐ Are you particularly interested in giving public readings? ☐ Are you willing to travel? (check if YES)
- B. ☐ Are you particularly interested in conducting workshops? ☐ Are you willing to travel? (check if YES)

3. Do you want to be listed as especially interested in working with any of the following groups? You may choose up to **four** groups. Rank them in order of priority (1 = first choice, etc.).

- |  |  |   |
|--|--|---|
| B. <input type="checkbox"/> All student levels                   | J. <input type="checkbox"/> Drug Rehabilitation Groups                 | S. <input type="checkbox"/> Community Centers       |
| C. <input type="checkbox"/> College level students               | K. <input type="checkbox"/> Migrant Workers                            | T. <input type="checkbox"/> Religious Centers       |
| D. <input type="checkbox"/> Secondary level students             | N. <input type="checkbox"/> Women's Groups                             | M. <input type="checkbox"/> Other (please specify): |
| E. <input checked="" type="checkbox"/> Elementary level students | O. <input type="checkbox"/> Mentally Challenged (Handicapped) Groups   |   |
| F. <input type="checkbox"/> Senior Citizens                      | P. <input type="checkbox"/> Physically Challenged (Handicapped Groups) |   |
| G. <input type="checkbox"/> Hospital Patients                    | Q. <input type="checkbox"/> Psychiatric Patients                       |   |
| H. <input type="checkbox"/> Prisoners                            | R. <input type="checkbox"/> Arts Centers, Museums, Libraries, Theatres |   |
- ① Mtgs of elem'y teacher or librarians

4. Do you want to be listed as especially interested in working with any of the following racial, ethnic, political or social groups? Indicate up to **three**.

- |   |   |                                      |  |
|---|---|--------------------------------------|--|
| A. <input type="checkbox"/> Black           | D. <input type="checkbox"/> Chicano                   | G. <input type="checkbox"/> Feminist | K. <input type="checkbox"/> Other (please specify) _____ |
| B. <input type="checkbox"/> Hispanic/Latino | E. <input checked="" type="checkbox"/> Asian American | H. <input type="checkbox"/> Gay Men  |  |
| C. <input type="checkbox"/> Puerto Rican    | F. <input type="checkbox"/> Native American*          | L. <input type="checkbox"/> Lesbian  |  |

5. Do you want to be listed as a member of any of the following racial, ethnic, political or social groups? Indicate up to **three**.

- |   |   |                                      |  |
|---|---|--------------------------------------|--|
| A. <input type="checkbox"/> Black           | D. <input type="checkbox"/> Chicano                   | G. <input type="checkbox"/> Feminist | K. <input type="checkbox"/> Other (please specify) _____ |
| B. <input type="checkbox"/> Hispanic/Latino | E. <input checked="" type="checkbox"/> Asian American | H. <input type="checkbox"/> Gay Men  |  |
| C. <input type="checkbox"/> Puerto Rican    | F. <input type="checkbox"/> Native American*          | L. <input type="checkbox"/> Lesbian  |  |

\* By Native American we mean what is also called "American Indian". If you would like to be listed as a Native American, please write your tribal affiliation:

6. Indicate up to **three** of the following languages in which you are fluent.

- |   |   |  |
|---|---|--|
| A. <input checked="" type="checkbox"/> French   | K. <input type="checkbox"/> Russian       | T. <input type="checkbox"/> Native American* Languages (specify) _____               |
| B. <input type="checkbox"/> German              | L. <input type="checkbox"/> Hebrew        | U. <input type="checkbox"/> African Languages (specify) _____                        |
| C. <input type="checkbox"/> Spanish             | M. <input type="checkbox"/> Arabic        | V. <input type="checkbox"/> Slavic Languages (excluding Russian, specify) _____      |
| D. <input type="checkbox"/> Italian             | N. <input type="checkbox"/> Portugese     | W. <input type="checkbox"/> Sandanavian Languages (excluding Swedish, specify) _____ |
| E. <input type="checkbox"/> Yiddish             | P. <input type="checkbox"/> Turkish       | X. <input type="checkbox"/> Indian Languages (specify) _____                         |
| F. <input type="checkbox"/> Swedish             | Q. <input type="checkbox"/> Modern Greek  | Y. <input type="checkbox"/> Other(s) (specify) _____                                 |
| G. <input type="checkbox"/> Dutch               | R. <input type="checkbox"/> Ancient Greek |  |
| H. <input type="checkbox"/> Chinese             | S. <input type="checkbox"/> Latin         |  |
| J. <input checked="" type="checkbox"/> Japanese |   |  |

7. Some organizations seek writers for programs on a specific theme. If any of your work has a special emphasis (biography, history, religion, philosophy etc.), please state briefly (limit to **one**):

The Japanese Am. Experience in the U.S.



"Poets & Writers Inc"

201 W. 54<sup>th</sup> St.

New York, 10019  
N.Y.

non profit Org.

CODA - newsletter - pub 5 times  
a year  
(\$5 p. yr.)

pub them paid by  
Nat'l Endowment & Arts.

appears listing in  
Directory of Am. Fiction Writers  
any fiction writer <sup>who has</sup> published.

in subscrip

Send check to

"Publishing Center"

Poets - Writers Inc

201 W. 54<sup>th</sup> St.

ny 10019.



## Types of publishers

1. Trade
2. Univ. Press
3. Small Press
4. Author's Coop
5. Self-pub
6. Vanity: author pay cost - publisher owns & distributes bk.

- In Corp + small press -  
author pays directly in cash or loan or by foregoing advances + royalties.  
They exert literary judgment + editorial control

- In Vanity Presses - author makes all literary decisions.

also  
specimen  
genera

Standard Vanity Presses (AVOID)

Carlton Press	Hyperion Bks
Crescent Pubs	Mojave Bks
Dorrance + Co	Poignant Poseidon Press
Exposition Press	Vantage Press
Franklin Pub.	Wm-Frederick

"Guaranteed Sales" Vanity Presses  
author buys Bks from Press.

Golden Quill - Windy Cow







Literature Program of  
Nat'l Endowment for  
the Arts - awarded  
\$ 990,000 in creative  
writers' fellowships for '76.  
\$ 6000 fellowships went to  
165 of 2436 applicants.

Literature advisory Panel  
reads memos - screened by  
prof'l writers. - then recom-  
mends to Nat'l Council on the  
Arts.

Creative Writers Fellowships given  
on 2-yr cycle. next for Fiscal '78  
appln deadline 2/15/77.

For requirements & guidelines  
write to: Leonard Randolph  
Lit. Program Director  
Nat'l Endowment for Arts  
Wash DC 20506



# Poets & Writers

Galen Williams,  
Executive Director

A NEW, FREE SERVICE PUBLICATION FROM POETS & WRITERS

## Dispatch: Poets & Writers Bulletin

Dispatch is designed to get information about writers looking for work to the organizations and individuals that hire writers.

Dispatch will be sent by 1st Class mail, 8 times a year, free, to our list of about 500 active sponsors of literary programs and to any listed writer or any Coda subscriber who asks to be on its mailing list. (The general public may buy it for \$2/year or 25¢/copy.)

Dispatch replaces Coda's Needs and Trips features. It has a three-week lead time and the deadline for the next issue will always appear on its front page. "Jobs Available" will appear in both Dispatch and Coda.

Any poet or fiction writer listed with us may submit a notice. We need your name, your request (be sure to include dates and location), the title and publisher of your most recent work, your address, and your phone number.

Send notices to Dispatch, Poets & Writers, Inc., 201 West 54th Street, New York, New York 10019. Dispatch will begin publication in January 1978.

We hope Dispatch will serve you well.

201 West 54th Street  
New York City, N.Y. 10019  
Tel: (212) PLaza 7-1766

A publicly supported nonprofit organization partially funded by the  
New York State Council on the Arts and the National Endowment for the Arts



# What Can Poets & Writers, Inc. Do for You?

## WHO IS WHERE?

Anyone having difficulty getting in touch with a writer should call Poets & Writers COLLECT at (212) 757-1766. We have the current addresses for over 3,000 poets and fiction writers. Address changes come in constantly, and our authors' files are brought up to date every day.

We also serve as an information center for the nonprofit literary world and are glad to answer any related questions. If we cannot help you directly, we'll refer you to someone who can.

## OUR 6 PUBLICATIONS

A Directory of American Fiction Writers: names, current addresses, and other valuable information for over 800 contemporary fiction writers whose work has been published in the United States. All purchasers automatically receive, free of charge, a 1977 Supplement, updating the listings. 8½ x 11 inches, 136 pages, sewn binding, \$5 paperback; \$10 hardcover.

A Directory of American Poets: a reprint of the 1975 listings and other valuable information for 1,550 poets whose work has been published in the United States. All purchasers automatically receive, free of charge, a 1977 Supplement, updating the listings. 98 pages, 8½ x 11 inches, stapled, paper only, \$3.

The 1977 Supplement lists 895 authors added to Poets & Writers' listings since the directories were published. It is sent free to listed authors and to purchasers of either directory. 64 pages, 8½ x 11 inches, perfect bound.

In both directories and The Supplement, each author's listing includes: current address, with alternative addresses for transient writers; telephone number(s) if authorized by the writer; interest and experience in teaching, giving readings, and poets-in-the-schools programs; preferences, if any, for working with special-interest groups such as prisoners, ethnic groups, and feminist organizations; speaking knowledge of foreign languages; most recent book, including publisher and year of publication.

A Directory of American Fiction Writers also includes a comprehensive 46-page Service Section with information about literary organizations and publications useful to writers; listings of anthologies, films, and videotapes of contemporary authors; lists of resources for creative writing teachers; bookstores that stock poetry, fine fiction, and literary magazines; and a practical checklist to guide organizers of readings and workshops.

The Sponsors Listing is an enlarged and updated version of the Sponsors Listing which appears in the 1976 edition of A Directory of American Fiction Writers.

The listing, which was revised in spring 1977, includes the names and addresses of over 500 groups across the country who sponsor readings and workshops, and the addresses of the 50 state arts councils. It is now available to anyone as a separate publication at no cost. Just call or write Poets & Writers.

X Coda: Poets & Writers Newsletter presents news of and for the writing community today. 8½ x 11 inches, 32-36 pages, published five times a year. A year's subscription costs \$6; single issues, \$1.50. Writers listed with Poets & Writers, Inc. receive an author's discount: \$4.50 for five issues.

Coda reports on such topics as writers' colonies, taxes and the writer, publishing activities and opportunities, copyright protection, grants and awards,

writers available for readings and workshops, and services for writers, editors, and publishers.

Index to Coda: The hundreds of informative articles and references run since May 1973 in Coda's four years of publication have now been professionally indexed. The complete index is available by volume number at \$1.50 per volume. A selected index of Volume 4 (July 1976 - June 1977) is available in the June/July 1977 Coda, Vol.4, No. 5 (\$1.25 for this issue).

## WHAT WE DO FOR NEW YORK STATE

We run a readings and workshops program which helps pay fees for poets, fiction writers, and playwrights to give readings and/or conduct workshops at nonprofit organizations in New York State. Any nonprofit organization may apply for funds: college, university, library, museum, religious organization, special interest or community group.

In 1975-76, Poets & Writers helped pay the fees of 401 different writers--322 poets, 64 fiction writers, and 15 playwrights for readings and workshops, with checks ranging from \$25 to \$300. Altogether Poets & Writers helped sponsor 1,258 events--759 readings and 499 workshops--in 117 different communities. Money for a program is generally given to an organization on a matching basis. To apply, just call or write us.

## TWO HELPFUL CHECKLISTS

Groups new to organizing workshops or readings (or even those with some experience) will find our two checklists helpful. One tells how to plan for a visiting writer ("Ask faculty members or students to meet authors, show them around, and outline the details of their schedules." "Be sure to provide authors with meals.") Another checklist suggests ways to publicize readings and workshops ("Follow up your press releases to the media with a phone call." "Ask your co-workers and friends to send flyers to people who would be interested.")

Both "How to Organize a Reading or Workshop" and "How to Publicize Readings and Workshops" are free upon request.

## WHO SUPPORTS US

The Poets & Writers, Inc. Readings/Workshop Program is supported by the New York State Council on the Arts. All the other services are funded by the Literature Program of the National Endowment for the Arts. In addition, about thirty publishers, foundations, and individuals contribute to our general support.

What can Poets & Writers do for you? Write or call Poets & Writers, Inc., 201 West 54 Street, New York, New York 10019. (212) 757-1766. □

# Poets & Writers, Inc.

201 West 54th Street  
New York, New York 10019

(212) 757-1766



1. Journey Home  
Athenaeum/McGill C. McElderry Bks. 1978

2. Journey to Topaz  
Charles Scribner's 1971

3. Samurai of Gold Hill  
Charles Scribner's 1972

4. Birthday Visitor -  
Chas Scribner's 1975

5. Roster - 1976  
CS.



# Poets & Writers

Galen Williams,  
Executive Director

February 1979

Dear Author:

The next edition of the Poets & Writers' directory is becoming a reality. This time it will be a combined directory of both poets and fiction writers; it will include approximately 5,000 authors and is scheduled for publication in late Fall, 1979.

We are in the process of gathering and checking the information for the directory. To insure accuracy we are enclosing a publications form that you should fill in and return to us BY APRIL 15, 1979 if you want your publications to be listed in the directory. If we do not receive a form back from you by April 15th, no publication credits will appear with your listing in the directory. Because we think including your publications in the directory is important, we have enclosed a business reply envelope to facilitate your response.

Please look at how your name, address and listing code appear on the business reply envelope. The listing code will be one or more of the following: P (poet), W (fiction writer), or M (multimedia performer). If there is an error in the spelling of your name, your address, or your listing status, please call us on our toll-free WATS line (800-223-0384) so we can correct the error. If you live in New York State, please call our regular number collect (212-757-1766).

If you would like to be listed in another category, in addition to the one you're already listed in, please write us and we will send you an application form. If you would like to apply as a performance poet, multimedia or other non-print writer, please write us for details. Changes in your listing status (other than correcting errors) may not appear in the 1979 directory. Our application and screening procedures take several months.

The publications you fill in on the enclosed form should reflect your listing status. If you are both a poet and fiction writer, but only listed with us as a fiction writer, your publications should be fiction only. If you are listed with us in both categories, you may list publications in both.

Finally, please let us know whenever you move or if there is any other change in your address (e.g. new phone number, new literary agent, etc.) - even after the new directory is out. People do call us for current information when your address or phone number in the directory is out-of-date. According to our most recent office survey, we receive requests for approximately 50 addresses per day. 40% of the calls are from organizers of readings and workshops, and 25% are from magazine editors or publishers. If your address is accurate these people will be able to reach you easily and discuss possibilities for readings and publication of your work.

Best wishes,

*Elliot Figman*

Elliot Figman  
Information Center Director

*sent ✓*  
*(see back)*

201 West 54th Street  
New York City, N.Y. 10019  
Tel: (212) PLaza 7-1766

A publicly supported nonprofit organization partially funded by the  
New York State Council on the Arts and the National Endowment for the Arts