

H2.86

67/14
c

ORGANIZATIONAL CHART - COMMUNITY EDUCATION SECTION

ACTIVITIES

DEPUTY SUPERINTENDENT-ED.
(Supervisor-Activities)

BLOCK LAY COMMITTEE

ASS'T. SUPERVISOR

Special
Events

Office
Services

BLOCK ACTIVITY

COORDINATOR

Adult
Act.

Private
Agen.

Block
Super.

BLOCK LAY COMMITTEE

SUPERVISOR - OPERATIONS DEPT.

ASS'T. SUPERVISOR

Truck
Maint.

Finance

F. A.
Movies

Property

Athletics

Arts

Drama

Etc.

SUPERINTENDENT EDUCATION

NURSERY

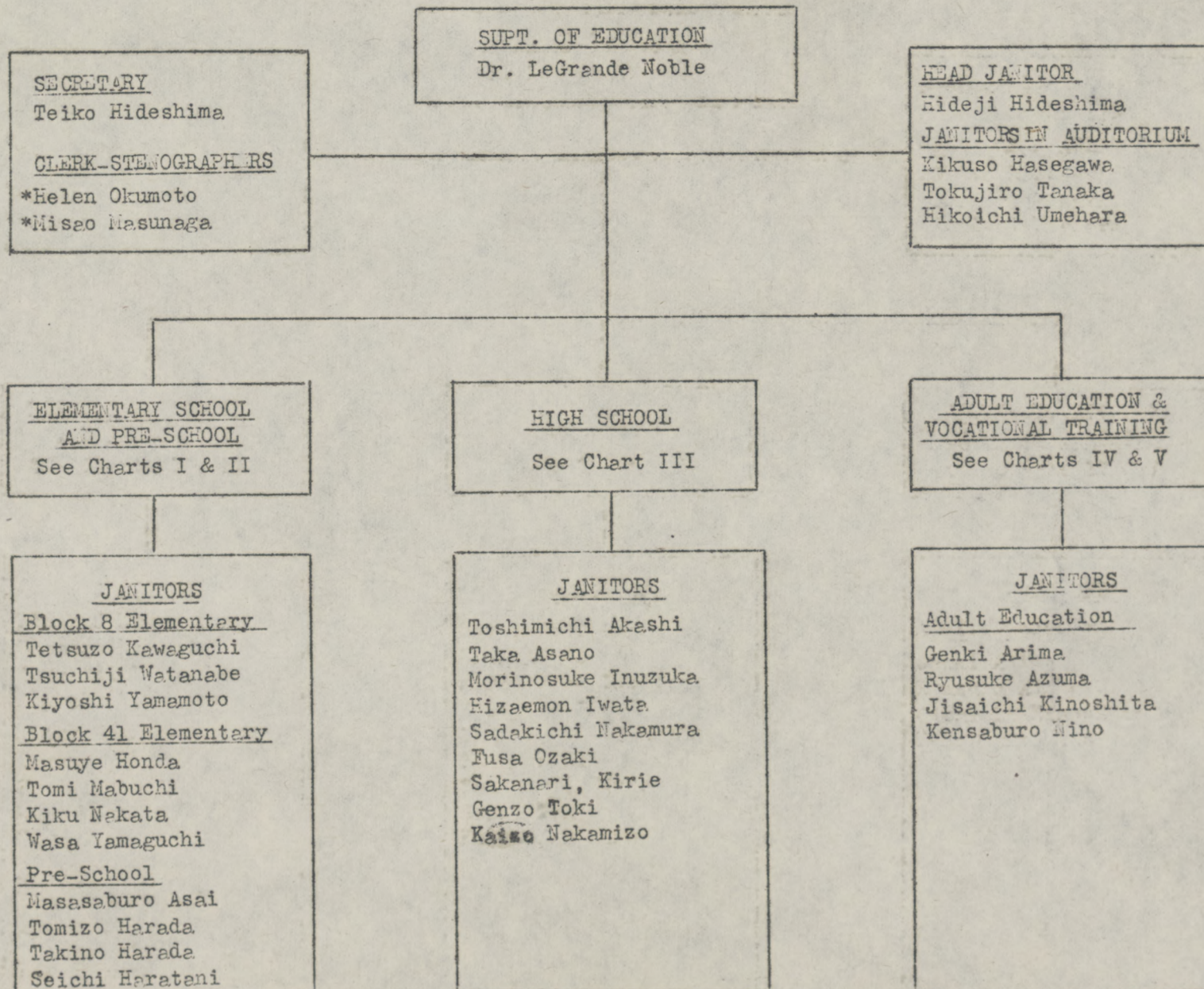
ELEMENTARY

SECONDARY

ADULT

EDUCATION SECTION

1/4/45



*Part-time

CHART I.

PRE-SCHOOL

1/4/45

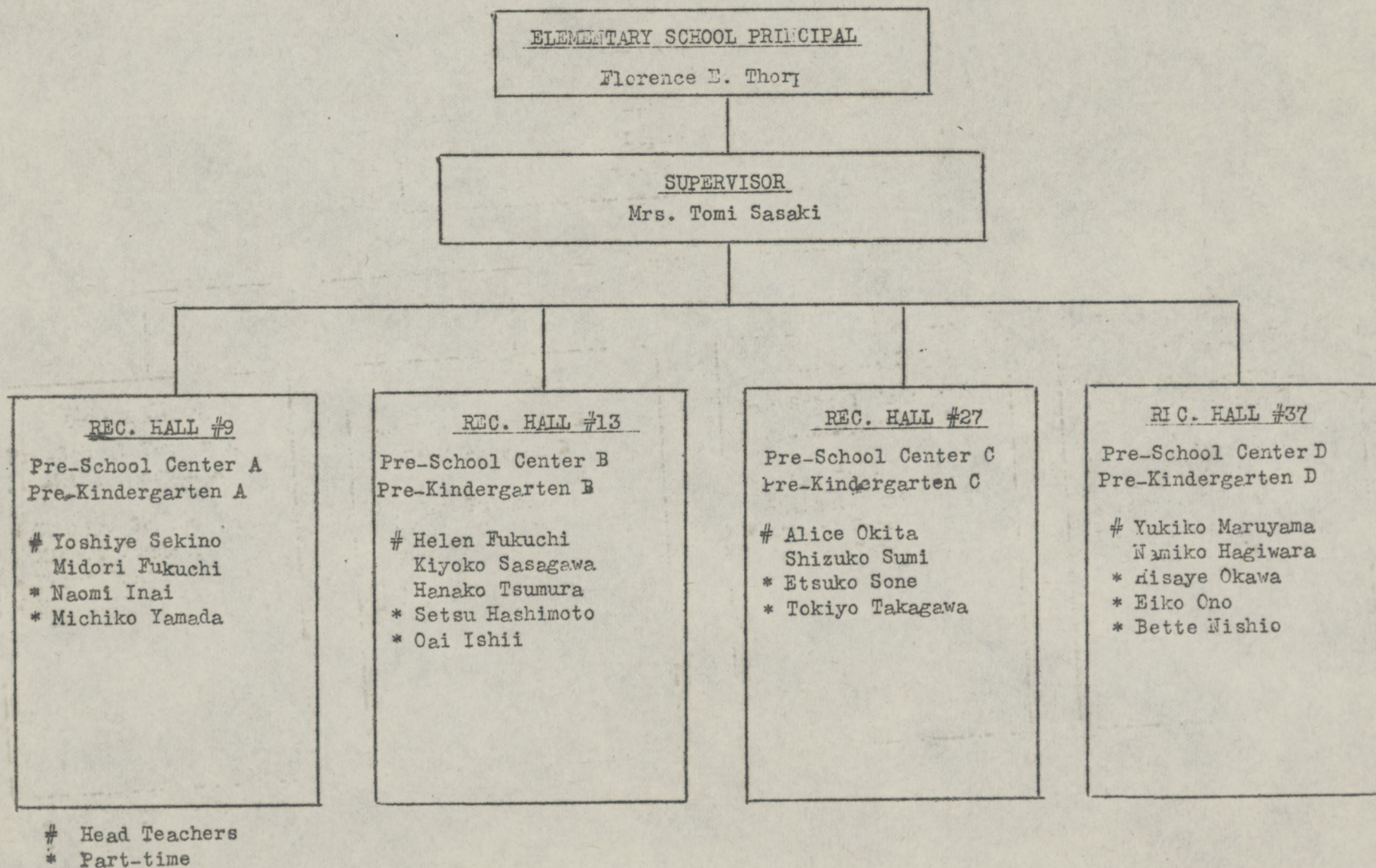


CHART II.

BLOCK #8

ELEMENTARY SCHOOL

BLOCK #41

1/4/45

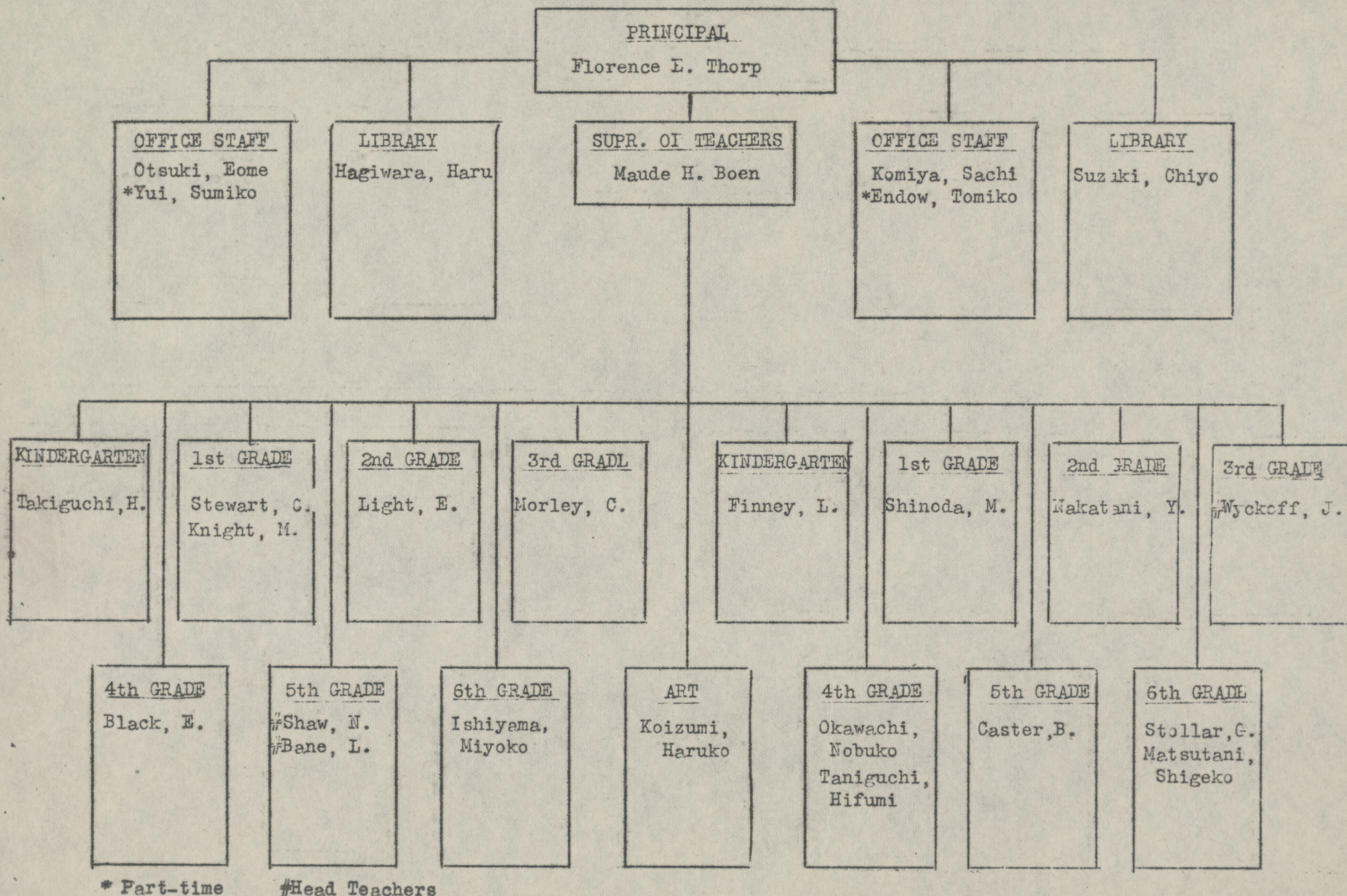
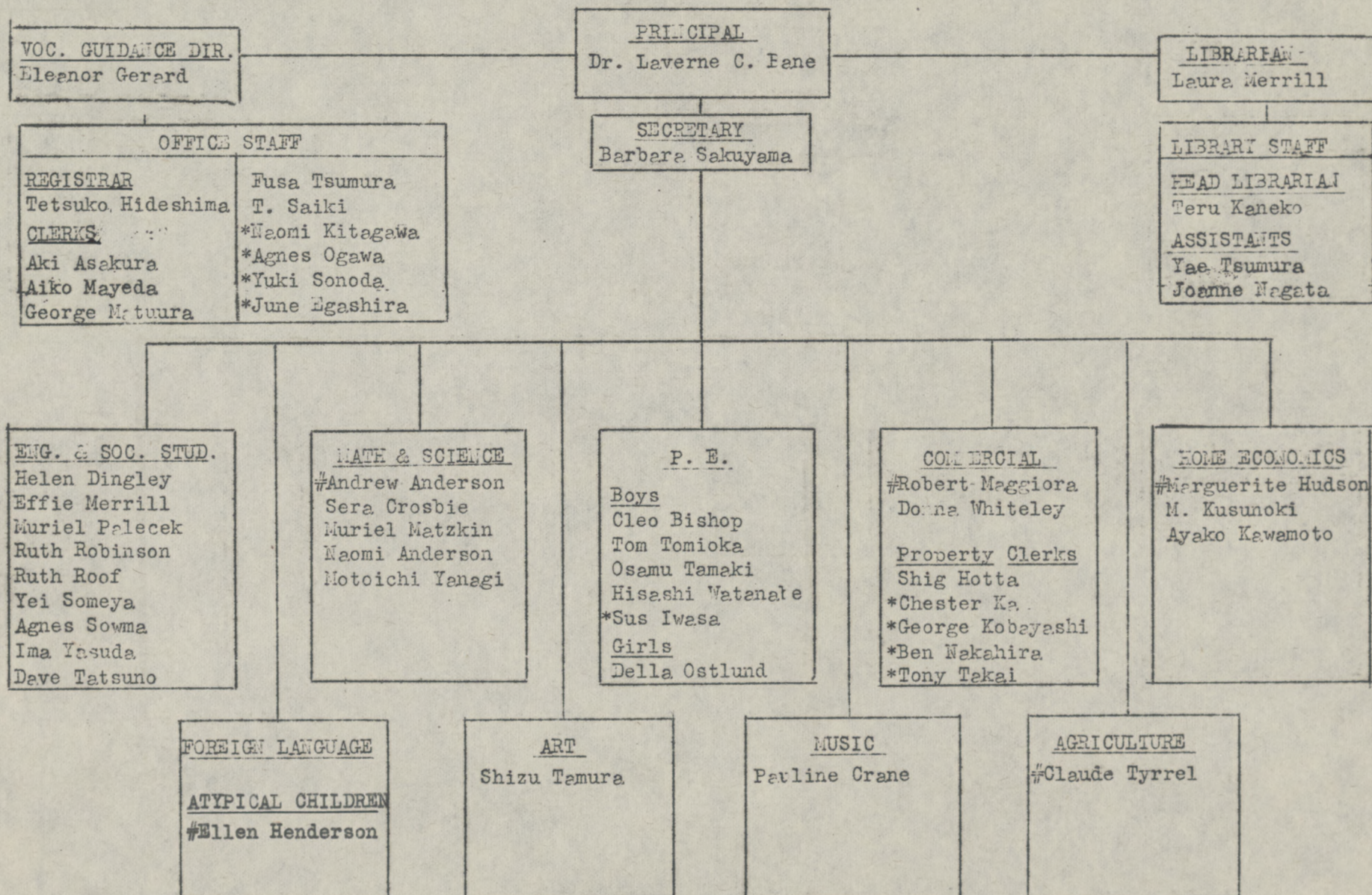


CHART III.

HIGH SCHOOL

1/15/45

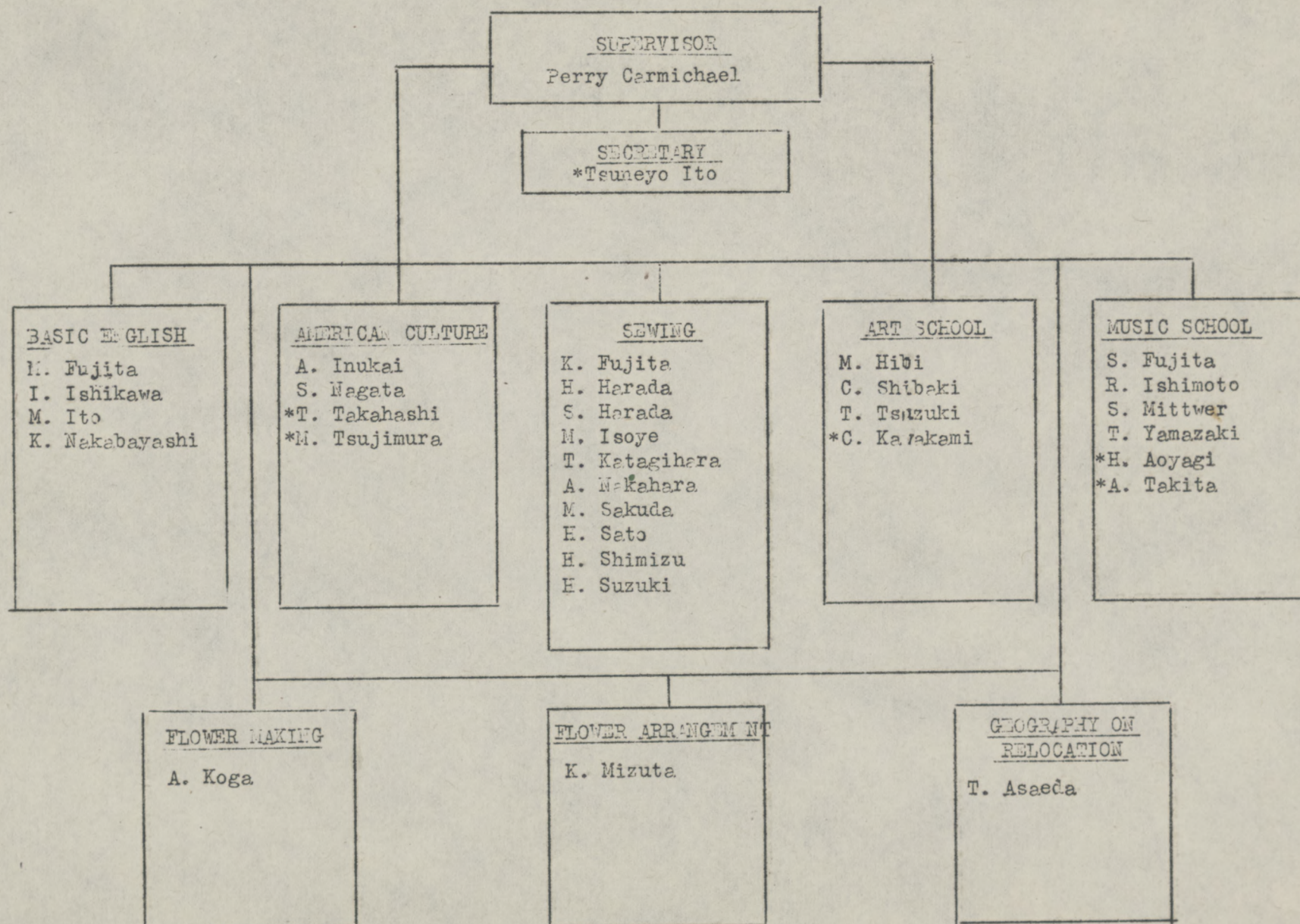


*Part-time
#Head Teachers

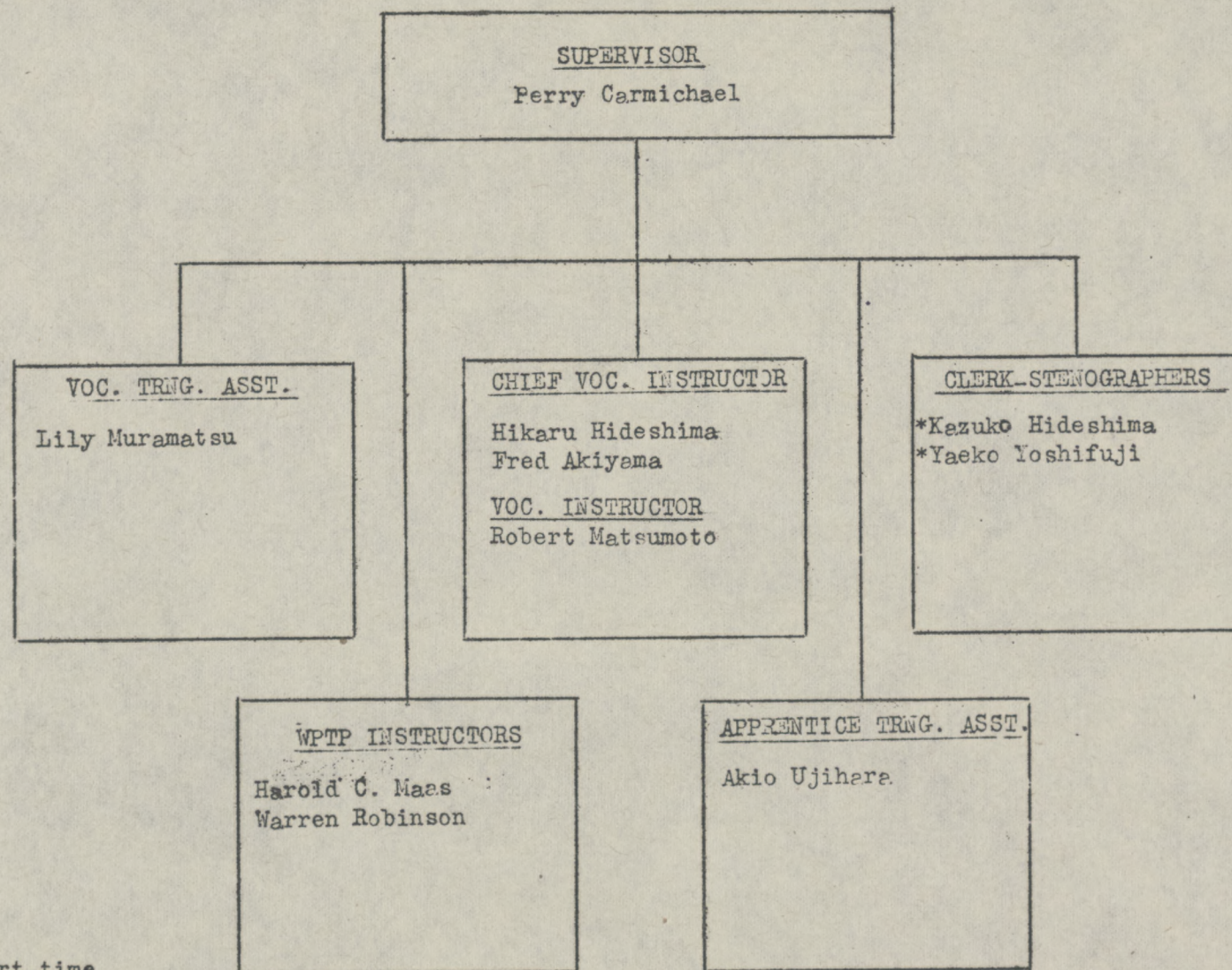
CHART IV.

ADULT EDUCATION

1/4/45



*Part-time

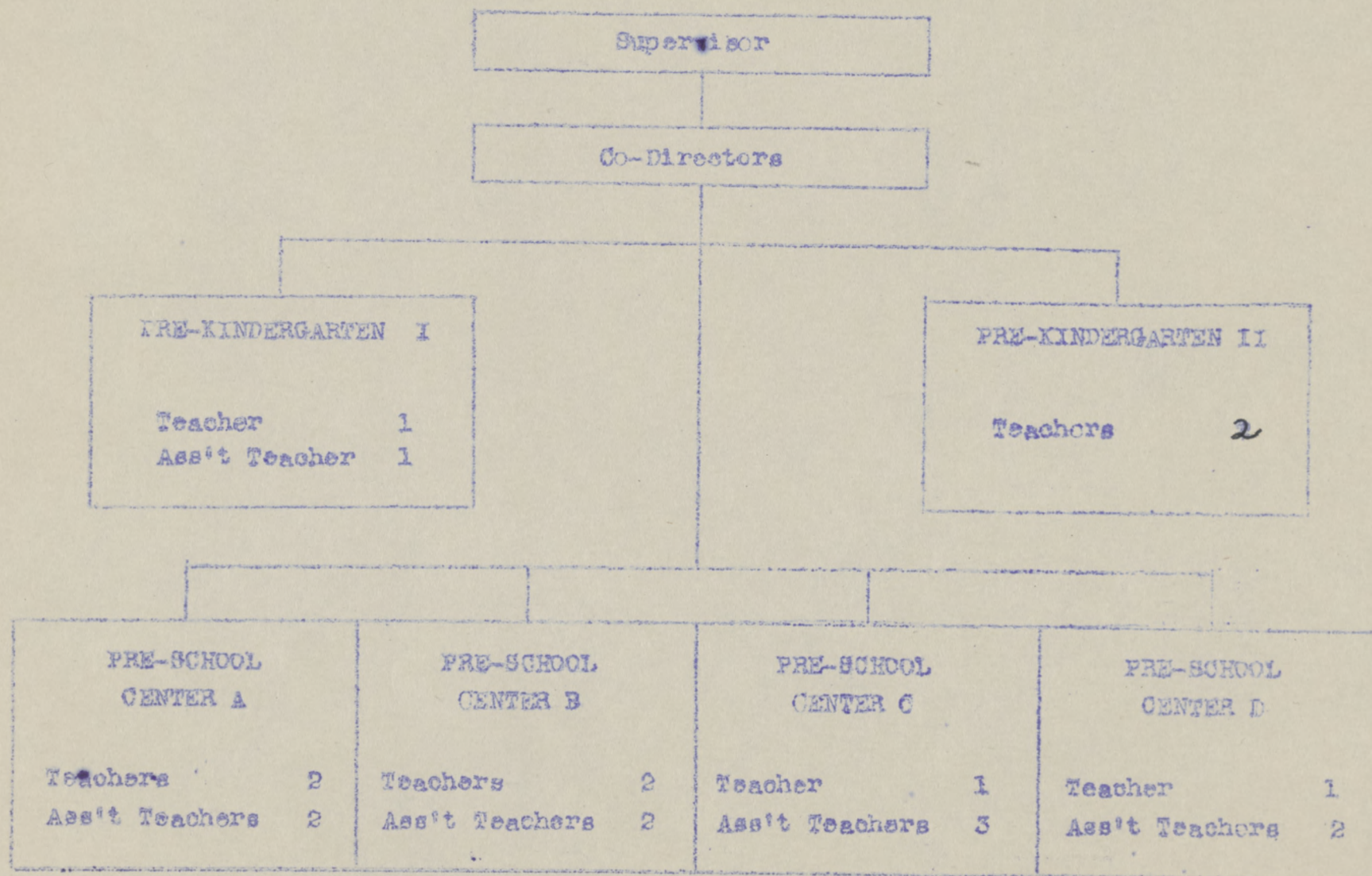


*Part-time

Mr. Carmichael supervises the following high school practical arts courses: Industrial arts, Agricultural arts, Commercial arts, and Homemaking arts

PRE-SCHOOL DEPARTMENT

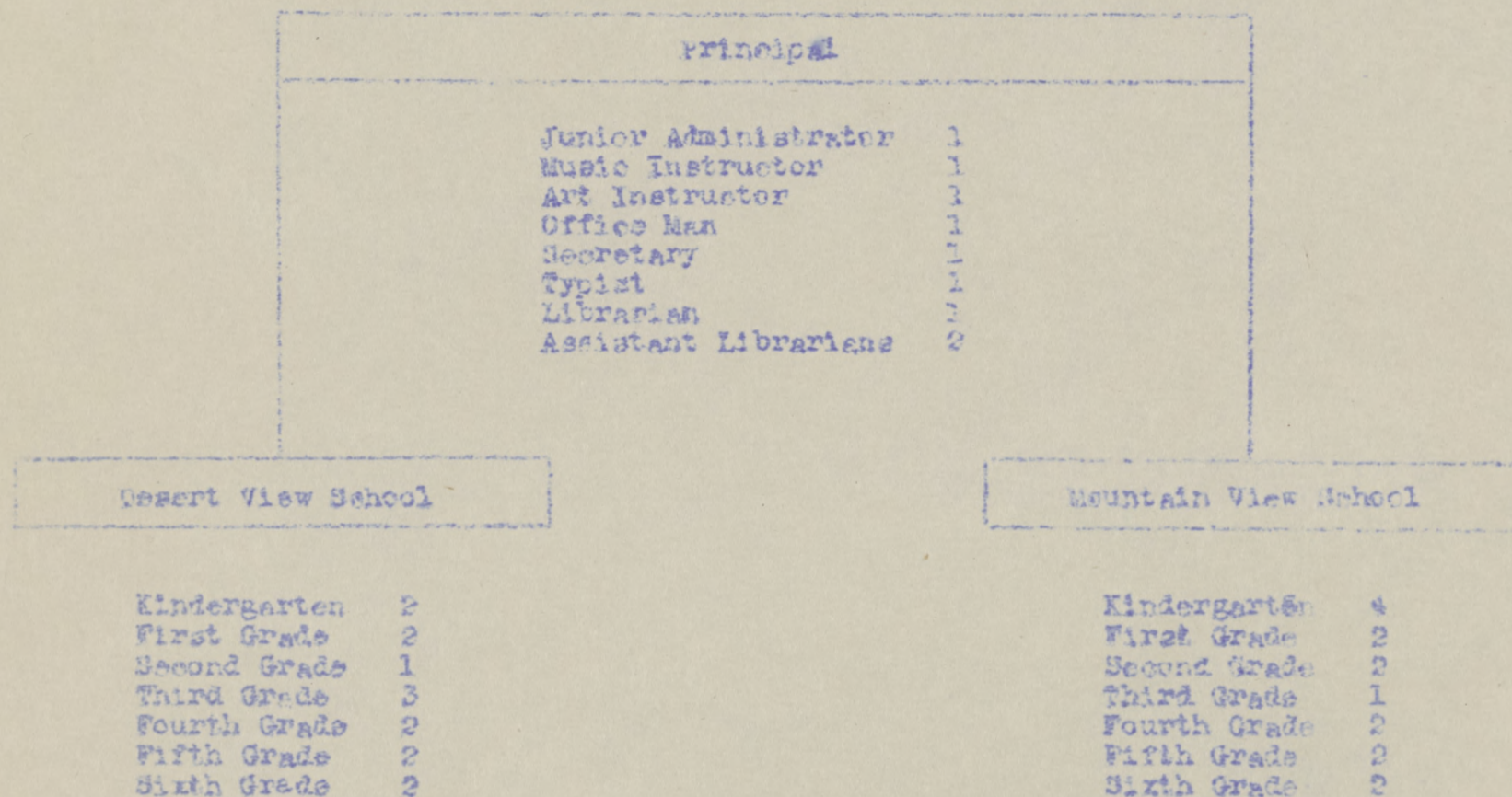
November 16, 1943



42.86

ELEMENTARY SCHOOL ORGANIZATION

November 16, 1948



Special tutoring for children who are hospitalized and those confined to their homes.

WAR RELOCATION AUTHORITY
Central Utah Project
Topaz, Utah

February 28, 1945

SUMMARY STATEMENTS OF SCHOOL ENROLLMENTS
TEACHING STAFF AND GENERAL STATEMENT OF PROGRAM

March 1945

School	Pupil Enr.	Certified Teachers	WRA Ratio Standard	Actual Ratio	Students over WRA Standard	Assistant Teachers
High School	557	26	1-35	1-29	None	13*
Elemen- tary	594	13	1-40	1-45	5	11*

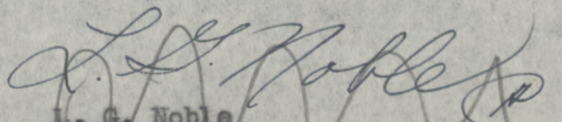
* Evacuees who have a high school education and at least one year of college credit and one year of teaching experience is included in this list. The majority of our evacuee teachers are doing a commendable piece of work in the class room.

The forgoing figure indicates considerable improvement in the educational program of the Central Utah Project over the reports submitted in August, 1944. The following improvements should be noted:

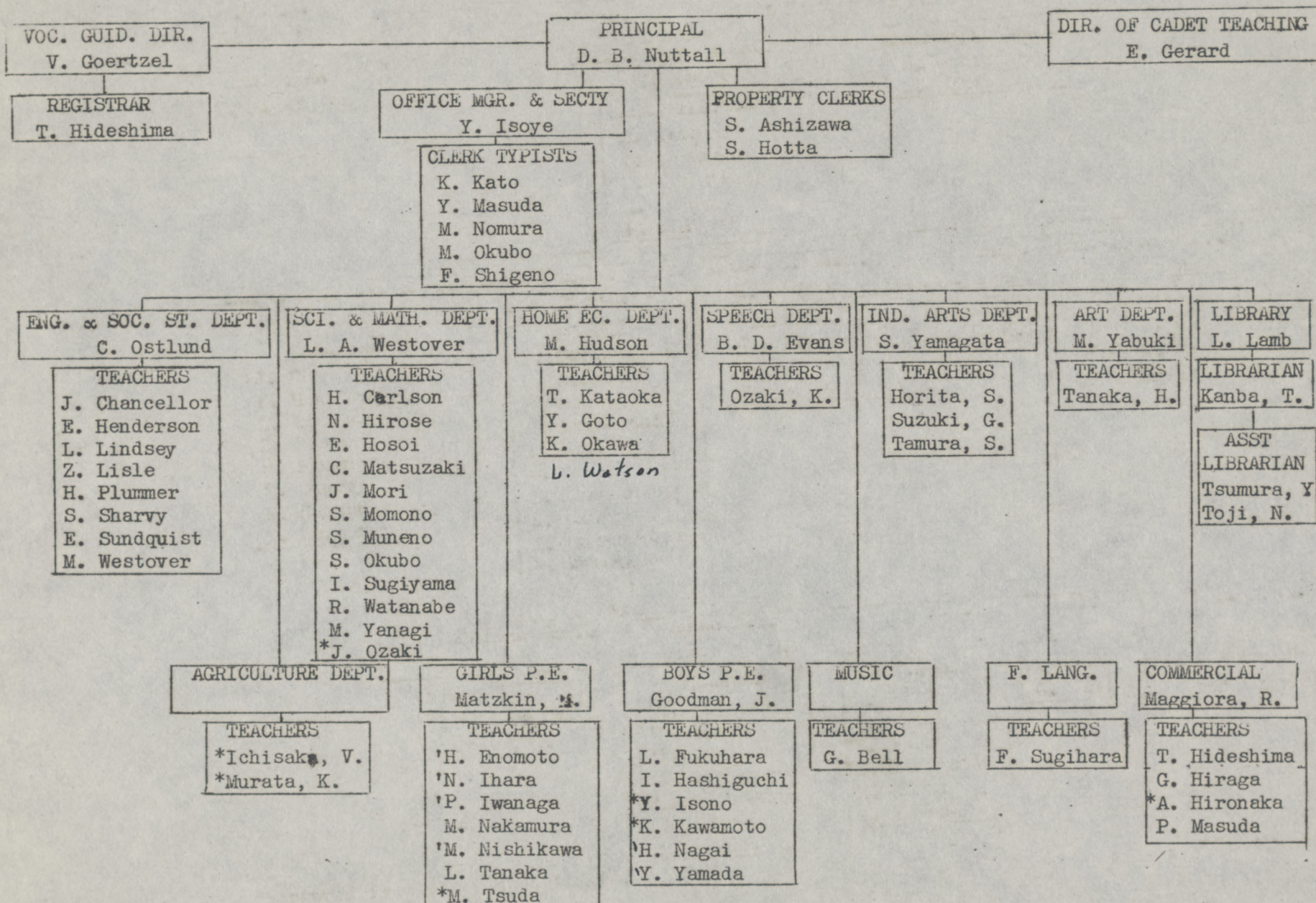
- 1) The actual pupil ration of certified teachers has decreased both in the elementary and secondary levels since August 1944.
- 2) The number of certified teachers has increased in both the elementary and secondary school, in fact, as of this date there is only one vacancy in the appointed staff personnel. These personnel additions have made it possible for us to fill practically all class rooms with appointed teachers. At present evacuee teachers are being used in some special courses and as assistant teachers in some departments of both the elementary and secondary schools.

The education program as now in operation is favorable in comparison to that in Utah and adjacent states. In fact, a member of the State Advisory Commission on Education, visiting in this project in November 1944 said that in his opinion the schools of the Central Utah Project are above the average in the state of Utah.

The curricula offered is standard in every way and the credits from these schools have been accepted throughout the United States for full face value.


L. G. Noble
Superintendent of Education

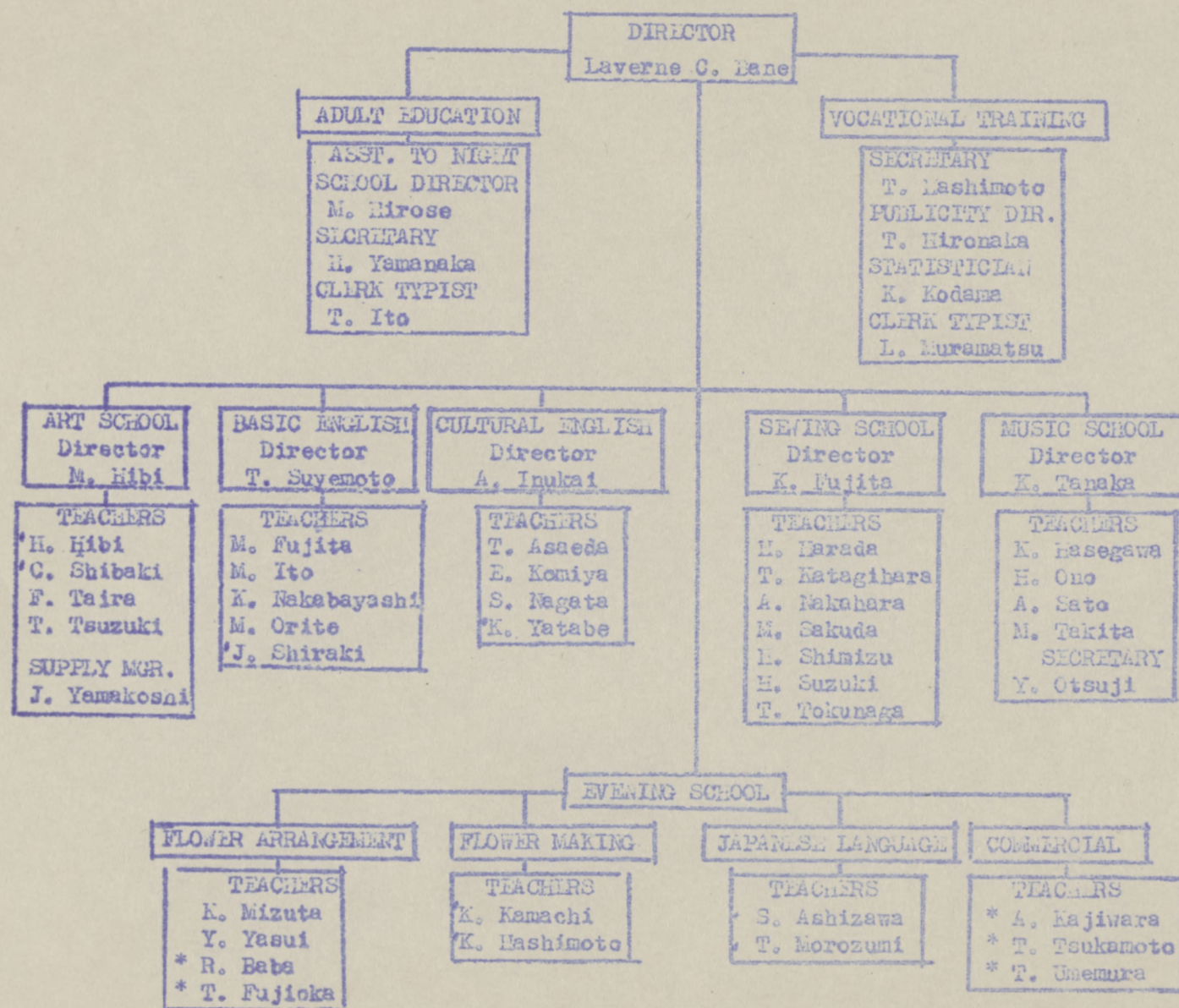
TOPAZ CITY HIGH SCHOOL FACULTY



*Borrowed from other departments.

'Part-time workers:

ADULT EDUCATION STAFF



* Volunteers
 * Half-time workers

WAR RELOCATION AUTHORITY
Central Utah Project
Topaz, Utah

VOCATIONAL TRAINING PERSONNEL

Perry Carmichael

Supervisor

Lily Muramatsu
Hikaru Hideshima
Fred Akiyama
Robert Y. Matsumoto
Akio Ujihara
Kazuko Hideshima
Yaeko Yoshifuji

Voc. Trng. Asst.
Chief Voc. Instr.
Chief Voc. Instr.
Voc. Instr.
Apprent. Trng. Asst.
Clerk-Steno. (part-time)
Clerk-Steno. (part-time)

LEARNERS

Tsuneo Ohama
Frank Hashimoto
Yasuo Ishida
Yuriko Kitani
Hideyo Adachi
Henry Fujimoto
Akira Muto
Kazuo Nishida
Isao Baba
George Goto
Shigeru Ishihara
Eugene Nodohara
Frank T. Ura
Takehiko Yanagi
Tom Ishimoto
Kinichi Kajita
Shinsaku Koyanagi
Yasuo Nakatani
Goichi Yamasaki
George Okimoto
Masazo Furuya
Hachio Moriguchi
Jimmy Ishida
Masanao Narahara
Hisashi Saiki
Sam Sato
Tom Yasutake
Frank Kanai

Watch Repair			
Watch Repair			
Photography			
Photography (part-time)			
Radio & Phono. Repair			
Radio & Phono. repair			
Radio & Phono. Repair			
Typewriter Repair			
Auto Mechanics (part-time)			WPTP
"	"	"	WPTP
"	"	"	WPTP
"	"	"	WPTP
"	"	"	WRA —
"	"	"	WPTP
Auto Mechanics (full-time)			WPTP
"	"	"	WPTP
"	"	"	WPTP
"	"	"	WPTP
"	"	"	WRA —
"	"	"	WPTP
Welding			
Welding			
Welding (part-time)			
"	"	"	
"	"	"	
"	"	"	
"	"	"	
Auto Mechanics			WRA —

Vocational Training

Apprentice

Shirokawa, Masiko	4/1/44	Photographer
Hoshimoto, Frank		Watch repair
Kitani, Yuzuki		Photography (P.T.)
Baba, Isao		Auto Mechanics (P.T.)
Sato, George		" " "
Ishikawa, Shigemi		" " "
Nodohara, Eugene		" " "
Yanagi, Sakakichi		" " "
Oshimoto, Tom		Auto Mechanics (P.T.)
Okimoto, George		" " "
Noriguchi, Hachio		Welding
Kasai, Frank		Auto Mechanics
Kanamoto, Rieji	1/1/44	Auto Mechanics
Fukuiwa, Haruki, Harry	12/20	" "
Yoshida, Hideo	12/20	" "
Matsumoto, Noboru	12/20	" "
Sasaki, Tamotaru	12/20	" "
Hiro, Shinichi	1/2	" "

September 14, 1944

Will you kindly furnish us with the list of home economics, industrial arts, vocational trade and vocational part-time teachers, coordinators and local directors in your district, together with the schools in which they teach? We frequently have call for this information and occasionally receive literature they will be interested to obtain.

Manual Training

Vocational Day Trade Teachers

<u>Teacher's Name</u>	<u>School and Address</u>	<u>Course Taught</u>

Vocational Coordinators - Full-Time

<u>Name of Coordinator</u>	<u>School or District</u>

Vocational Coordinators - Part-Time General Continuation

<u>Name of Coordinator</u>	<u>School or District</u>

Vocational Local Director or Supervisor

<u>Name</u>	<u>School or District</u>

BLK 1	WAREHOUSE	CONFERENCE ROOM		INTER-FAITH	BLK 3	C.E.S. OFFICE	BLK 4	GIRLS CLUBROOM	BLK 5	SEWING	BLK 6	Open for Scheduling	BLK 7	ART DEPT.		
BLK 8	ELEMENTARY SCHOOL	BLK 9	NURSERY	BLK 10	Open for Scheduling	BLK 11	INTERNAL SECURITY	CO-OP			BLK 13	NURSERY	BLK 14	CATHOLIC CHURCH		
			BLK 16	LIBRARY	PROPOSED REC HALL ASSIGNMENTS As of December 15, 1943				CO-OP		BLK 20	BLK 12	BLK 19			
			BLK 23	SEWING Temporary	ENGLISH CLASS Temporary				BLK 26	CO-OP		BLK 27	NURSERY			Buddhist Church
BLK 29	ART PRODUCTION	BLK 22	BLK 30	Open for Scheduling	BLK 31	JAPANESE LIBRARY BRANCH	SCHOOL		BLK MGRS.	BLK 33	CO-OP	BLK 34	Open for Scheduling	BLK 28	BLK 35	SEWING
BLK 36		BLK 37	NURSERY	BLK 38	ART SCHOOL	DRAMA CLUB	BLK 39	GOH*SHOGI	BLK 40	AMERICAN RED CROSS USO	BLK 41	SCHOOL	BLK 42	SCOUT LODGE		