

K4.39:2

2 of 2

1943-1944; 1944-1945

[\* See Bul 34, Folder 10]

67/14  
C



Sila River - Education  
UCO

# BEAR TRAVELS

~~12430~~

FILE COPY





K4.39



BEAR TRAILS

HANDBOOK  
OF  
CANAL HIGH SCHOOL  
RIVERS, ARIZONA

1943-1944



IDENTIFICATION

PROPERTY OF.....

CLASS.....

ADDRESS.....



## STAFF

EDITOR.....George Matsuda

ASS'T EDITOR.....Katsumi Hokoda

BUSINESS MANAGER.....Tom Nagata

LITERARY EDITORS....Evelyn Hatanaka  
.....Lily Umeda

MAKE-UP EDITOR.....Yuico Otani  
.....Alyce Kawada



## PREFACE

For the Freshman Class For those students who are not thoroughly acquainted with their school, this booklet has been prepared.

Between these covers you will find the foundations of Canal High School: its Constitution, its regulations, its organization, its faculty and its students.

Remember you'll never lose the way if you take the "Bear Trail!"

## C O N T E N T S

HISTORY.....	6
CALENDAR.....	7
GENERAL INFORMATION:	
ATTENDANCE.....	10
DAILY SCHEDULE.....	10
REQUIREMENTS.....	11
REPORT CARDS.....	12
HONOR ROLL.....	13
HONOR SOCIETY.....	13
BULLETINS.....	14
LIBRARY.....	14
SCHOOL NURSE.....	15
PROGRAM CHANGES.....	15
LOST AND FOUND.....	16
FIRE REGULATIONS.....	16
CONSTITUTION.....	17
OUTLINE OF SUBJECTS.....	32
ORGANIZATIONS:	
FORENSICS.....	44
F.F.A.....	44
G.A.A.....	44
LETTERMEN.....	45
Los Pan Americanos .....	45
SCIENCE.....	45
YELLS AND SONGS.....	48
FACULTY DIRECTORY.....	59
STUDENT DIRECTORY.....	60



## HISTORY

On October 12, 1942 the doors of Canal High School opened. Eager and ambitious students, 500 strong, from all walks of life, enrolled for various subjects under the several Caucasian and evacuee teachers.

The students were disappointed at not having beautiful oak desks, books, and large buildings and in having to sit on nail barrels and the floor, but never for a moment did they leave their desire for knowledge and forget the value of education.

The enthusiastic student body overcame these handicaps and without delay adopted the school colors, Blue and Gold; the school emblem, the Golden Bear; and the motto, "Enter to learn, go forth to serve." With the aid of the faculty, the Constitution Committee drew up a school constitution which was immediately ratified by a two-thirds majority of the student body.

Today, Canal High School is proud

to boast that our past year has been successful, thanks to the full cooperation of an understanding faculty and student body. We do not have all the modern conveniences of "back home", but we realize that knowledge comes not from marble floors and landscaped gardens but studying and working together.

Yes, enter to learn and go forth to serve--to serve our fellow Americans, and Americans of Japanese ancestry in the outside world!

\* \* \*

#### SOCIAL CALENDAR 1943-1944

##### September

13: School term began

##### October

9-10: Publication Bazaar

12: School Anniversary

15: Get-Acquainted Dance

18: Dr. E. Stanley Jones



## November

- 11: Armistice Day
- 24: Freshman Day-Assembly-Dance
- 25: Thanksgiving Day
- 26: Holiday
- Home-Coming Day-Alumni
- Sophomore Class Party
- Junior Social

## December

- Freshman Get-Together
- Los Pan Americanos Social
- Junior Class Party
- 22: Christmas Program
- 23: Christmas vacation begins

## January

- 2: Christmas vacation ends
- Senior Class Party
- 28: End of first semester
- Club Social

## February

- 12: Lincoln's Birthday
- 14: Valentine's Day
- 22: Washington's Birthday

## March:

- Freshman Class Party
- Sophomore Assembly
- Senior Picnic and Hike

March

Easter Parade (king-queen)  
Easter Hunt-Bunny Hop

April

1-10: Spring Holiday  
Freshmen Hike

May

9: Mother's Day  
Senior Ditch Day (host to  
Butte Seniors)  
Freshmen Assembly  
Farewell Social  
Sophomore Party  
Junior Class Party

June

Junior-Senior Prom  
4: Baccalaureate Services  
Senior Banquet  
8: Commencement

\* \* \*



## GENERAL INFORMATION

### Attendance:

If absent, a student must bring a written excuse to the office and obtain an absence slip. This slip is to be signed by the teachers of the classes from which the student was absent. The slip is then left with the teacher, who signs the slip last.

A student must obtain a tardy slip from the office for tardiness to class. A good reason is required.

Three unexcused tardies a week make one ineligible to receive admits until the matter is cleared.

### Daily Schedule:

#### Morning:

From 8:00 to 8:45 (Activity  
Period)

" 8:50 " 9:45

" 9:50 " 10:45

" 10:50 " 11:45

Noon:

From 1:00 to 1:55

" 2:00 " 2:55

" 3:00 " 3:55

Assembly Schedule:

Morning:

From 8:50 to 9:30

" 9:35 " 10:15

" 10:20 " 11:00

" 11:05 " 11:45

Noon:

From 1:00 to 1:55

" 2:00 " 2:55

" 3:00 " 3:55

(Frosh-Soph Assembly)

(Jr-Sr Assembly)

\* \* \*

Requrements:

Subjects required for graduations  
are:

4 years of English

4 years of social science

1 year of laboratory science

(biology, chemistry or physics)



1 year of mathematics  
(general math or algebra)  
4 years of physical education

A student must then select courses to total at least sixteen credits in addition to physical education.

Students should be aware of the fact that graduation requirements and college entrance requirements are different.

In general, college requirements are:

At least 3 credits in English.

At least 2 credits in math  
(algebra and geometry)

At least 2 credits in foreign language.

At least 2 credits in social science.

Elective subjects to make a total of 16.

#### Report Cards:

Report cards are scheduled to be issued the week following the six weeks period. The cards are to be

signed and returned to the subject teachers on the following day.

### Honor Roll:

Any student making nine points is awarded an Honor Roll Membership Card. The following point system is used; "A" - 3 points, "B" - 2 points and "C" - 1 point. A "D", or "F", or "incomplete" will disqualify.

### National Honor Society:

The Canal High School chapter of the National Honor Society was granted its charter, No. 2712, on May 12, 1943.

The society's ideals are, to create a high standard of scholarship, to encourage participation in school activities and to develop personality, character and leadership. Membership is attained by those whose outstanding qualities in service, leadership, character, and scholarship are recognized by the faculty who participate in the final selection of members.



One can easily recognize a student who is a member of the society by the pin he proudly wears.

#### Bulletins:

The main bulletin board is located in front of the high school office. Each student should look at this at least once each day for the notices. The bulletin board in the library, is equally helpful.

#### Library:

The book center of Canal High is located in 14-D. There, certain regulations have been set up in order to give the student the greatest possible use of the library material.

The regulations are:

<u>Type of Book</u>	<u>Examples</u>	<u>Time Allowed</u>
---------------------	-----------------	---------------------

Books for general read-	Fiction Biography	One Week
-------------------------	----------------------	----------

<u>Type of Book</u>	<u>Examples</u>	<u>Time Allowed</u>
Books for supplementary reading	History Geography	Three days
Reserve books	Textbook, other books in great demand	Hour to hour during the day, and over-night

Books that are overdue will cost the student 2¢ a day for non-reserve books and 5¢ for reserve books.

#### School Nurse:

The school nurse, and her assistants have their office at the school. From 9 a.m. to 5 p.m. they treat patients for sprains, cuts, and give other first aid treatment. Home calls are also made by the nurse if a student is absent from school three days.

#### Program Changes:

Students desiring to change programs may do so with the permission



of the subject teacher and faculty advisor. Programs must be changed at the beginning of the semester. Exceptions are made when it is deemed necessary and beneficial to the student.

#### Lost and Found:

All articles found on the school premises should be turned in at the Canal High Office where they may be claimed by the rightful owners, who must prove ownership.

#### Fire Regulations:

The fire bell is a continuous gong. When you hear this, leave room and walk along the south side of the barrack, westward. continue walking until you reach the ground past the Community Stage. Do not run!

CONSTITUTION OF  
THE ASSOCIATED STUDENTS OF  
CANAL HIGH SCHOOL  
Rivers, Arizona

PREAMBLE

We, the Associated Students of Canal High School, in order to provide for Student government, promote school spirit, secure greater cooperation between faculty and students, serve efficiently our community and to inculcate the ideals of Americanism, do hereby establish this Constitution.

Article I-Name, Colors, Motto, and Emblem

Section I. The organization shall be known as the Associated Students of Canal High School.

Section II. The colors of this organization shall be blue and gold.

Section III. The Motto: Enter to learn; go forth to serve.

Section IV. The emblem of this organization shall be "Golden Bears."



## Article II-Membership

The Associated Students of Canal High School shall be comprised of all registered students.

## Article III-Student Body Officers

Section I. The officers of the Associated Students shall consist of a President; Vice President, Secretary, Treasurer, Chairman of Publications, Yell Leader, and Sergeant-at-Arms.

Section II. Qualification. All officers of the Associated Students shall be regular registered students and the President shall be a senior during his term in office. If the President resigns and the Vice President becomes President, the above requirement is void.

Section III-Duties. The President shall:

- (a) Preside over all student body meetings.
- (b) Be chairman of the Student Council.
- (c) Vote only in case of a tie.

- (d) Have power to call special meetings.

The Vice President shall:

- (a) Assume all duties of the President in his absence and become the President upon his resignation.
- (b) Be Social Chairman and have supervision of the Freshman Assembly as stated in Article V of the By-laws.

The Secretary shall:

- (a) Take minutes of all Student Body and Student Council meetings.
- (b) Attend to all Student Body and Student Council Correspondence.

The Treasurer shall:

- (a) Take charge of all student funds with the help of the auditor who shall be a member of the faculty.

The auditor must countersign all outgoing checks and counter - in dorse all incoming

- (b) Give reports when asked.



The Chairman of Publication shall:

- (a) Appoint his committee with the help of the advisor.
- (b) With his committee, appoint the editor of the annual and school paper and approve the staff of both.
- (c) Look after the welfare of all school publications and be Publicity Chairman.
- (d) Work in accordance with the Student Body Treasurer.

The Yell Leader shall:

- (a) Choose two students who shall be his assistants during his term in office.
- (b) Lead yells and songs at school rallies and school games.

The Sergeant-at-Arms shall:

- (a) Keep order at all Student Body and Student Council meetings.
- (b) Select a committee, and with his committee, take charge of all social welfare, such as, letters of sympathy, congratulations, etc.

Section IV. Terms. Each officers shall hold his office for two semesters.

Section V. Meetings. The meetings shall be called by the President when deemed necessary.

#### Article IV-Student Council

Section I. Membership. The Student Council shall be comprised of all Student Body Officers, all Class Presidents, and one representative from each class. This group shall select two faculty members to be its advisors.

Section II. Duties. The duties of the Student Council shall be:

- (a) Transact student business.
- (b) Have jurisdiction over all student activities.
- (c) Approve student financial affairs.
- (d) Check the petitions nominating Student Body Officers.
- (e) Approve the declination of the candidates for Student Body Offices by 2/3 majority.



- (f) Approve petitions for amendments to the constitution.
- (g) Approve the resignations of Student Body Officers by a 2/3 majority.
- (h) Appoint officers to fill in vacancies of the Student Body Offices, with the exception of the Student body President, within ten days.
- (i) Approve all school awards.

Section III. Terms. The members of the Student Council shall serve for two semesters.

Section IV. Meetings. The Student Council shall hold regular meetings every Wednesday and special meetings when necessary. A quorum must be present in order to transact business.

#### Article V-Class Officers

Section I. The class officers shall consist of a President, Vice President, Secretary, Treasurer, Yell Leader, and a Class Representative.

Section II. Duties. The President shall:

- (a) Preside over all class meetings.
- (b) Have power to call special meetings.
- (c) Be a member of the Student Council.

The Vice President shall:

- (a) Assume all duties of the President in his absence.
- (b) Be social chairman.

The Secretary shall:

- (a) Take minutes of all class meetings.
- (b) Attend to all class correspondence.

The Yell Leader shall lead all class yells, songs, and rallies.

The Class Representatives shall:

- (a) Represent the class to the Student Council.
- (b) Give reports concerning the council meetings when asked by the Class President.



Section III. Terms. Each officer shall hold his office for two semesters.

#### Article VI-Elections.

Section I. Secret ballots shall be used: the candidate receiving the majority vote in the final election is elected. In case of a tie, a re-election between those who are tied will be held. A student may be a candidate for only one office of an organization. If he is nominated for more than one office, he must choose one from them.

Section II. The procedure of the Student Body election shall be as follows:

- (a) During the fifth week before the dismissal of school, petitions containing a minimum of thirty signatures shall be submitted to the Student council.
- (b) During the fourth week, the Student Council shall announce the candidates and a primary election shall be held. The persons receiving

the two highest number of votes will be candidates in the final election.

- (c) During the third week, campaign speeches shall be made and the final election shall be held.

1943 election shall be held as follows:

- (a) After the adoption of this constitution, petitions may be submitted to the High School Office.
- (b) The office shall announce the candidates and the election date.

Section III. The procedure of the class election shall be as follows:

- (a) The election must be held by the end of the second week of school.
- (b) Nominations shall be made from the floor at the class meeting.

#### Article VII-Finance

1. All organization funds are to be banked with the Auditor who shall



in turn deposit the separate funds in one account at a down-town bank.

2. All treasurers will deposit funds with the Auditor on the day on which they are collected, or the following day.

3. The Auditor will give each treasurer a receipt for all funds deposited.

4. The Auditor shall keep accurate accounts of all separate funds and prepare monthly statements for each group.

5. Student organizations shall prepare a budget and file this budget with the Auditor after it has been approved by the organization's advisor.

6. Each organization advisors shall approve all expenditures before they are made. Requests for funds from the Auditor will be granted if signed by the advisor and the treasurer of the group, if sufficient funds are in their account.

7. Each organization shall keep accurate accounts of their collections and payments, such accounts to be audited once a semester.

8. The Auditor shall be a member of the faculty appointed by the principal.

9. If there are not sufficient funds in the Student Body Treasury, Athletic awards shall not be issued.

### Article VIII-Organizations

The procedure of forming an organization shall be:

- (a) Obtain a minimum of ten signatures on a petition.
- (b) Obtain a sponsor.
- (c) Write and submit a constitution to the Student Council.

After the approval of the Student Council, it becomes an official organization of the school.

### Article IX

Nothing in this constitution shall conflict in any way with regulations of the War Relocation Authority or any orders of its executives.

### Article X-Amendments

The procedure of amending this constitution shall be as follows:

- (a) A petition containing signatures of one-third of the entire student body shall be submitted to the Student



council.

(b) This petition must be approved by two-thirds of the entire student council.

If the petition is approved, the constitution shall be amended.

#### BY-LAWS Article I-Quorum

A quorum shall be two-thirds of the membership of an entire body.

#### Article II-Boys Athletics

Section I. Boys athletic awards shall be made as follows: Students receiving letter awards in athletics shall be nominated by the faculty member in charge of the sport and approved by the Student Council in regular session.

Section II. The following types of awards shall be given to the members who have earned them by the methods stated in Section I:

(a) A six inch chenille drop block "C" shall be awarded to the members of the Varsity team.

(b) A five inch chenille drop block "C" shall be awarded to

the members of the B class team.

- (C) A chenille "C" within a six inch diamond shall be awarded to the members of the C class team.
- (d) Boys athletic letters shall be a gold letter upon a blue background.
- (e) Yell leader's letter shall be a six inch chenille drop block "C", with a blue megaphone across the middle.
- (f) Managers' letters shall be the same as all athletic letters, the size according to the class they manage, with the work "HGR" engraved in blue on the upper middle part of the "C".

Section III. No student shall receive more than one letter a year. Emblems of the sports participated in shall be put on the letter. In case of a student earning a letter in two classes, a letter of the higher class shall be awarded.



Section IV. All students participating in school athletics must abide by the Arizona State interscholastic rulings.

### Article III-Girls Athletics

Section I. The girls' major sports are volleyball, speedball, baseball, basketball, and hiking.

Section II. The girls shall earn their awards by the following methods:

- (a) If a player plays the majority of the class's major sport games, she shall receive 100 points.
- (b) For individual sports such as badminton, pingpong, and tennis, they shall receive points by the "Ladder System".  
For first place, 100 points  
For second place, 75 points  
For third place, 50 points  
For fourth place, 25 points

Section III. The following types of awards shall be given to the members who have earned them as stated

in Section II:

(a) When a player makes 250 points, she shall become a member of the Girls Athletic Association.

(b) When a player makes 500 points, a four inch felt numeral shall be awarded.

(c) When a player makes 1000 points, a five inch felt blockletter shall be awarded.

(d) When a player makes 1600 points, a five inch chenille drop block letter, the colors same as the boys shall be awarded.

#### Article IV-Publication

Section I. Annual. The editor shall appoint his staff which shall consist of an assistant editor, literary editor, boys' athletic editor, girls' athletic editor, art editor, class editor, calendar editor, organization editor, senior activities editor, a head typist, and a mimeographer.



## Article V-Initiation

There shall be no freshmen initiation, but they must present an assembly to the student body under the supervision of the student body vice-president.

## Article VI-Ratification

This constitution, in order to be adopted, must be approved by two-thirds of both the Constitutional Convention and the student body respectively.

\* \* \*

## Outline of Subjects

The following outlines have been arranged to fit the needs of students attending the high school. A careful study of this paper permit the student to elect that course of study which best suits his needs and his abilities. Faculty advisor will assist the students in making wise and proper selections. Parents are urged to assist.

ENGLISH and the SOCIAL SCIENCES are integrated and required for four years in Canal High School. This core-course constitutes one half of the work done in the high school and will be broad and inclusive. It will include a thorough study of English literature, reading, speaking and writing. The Social Studies will cover the fields of Community Civics, World History, American History, Problems of Democracy, and the required study on the Federal and State Constitutions.

LABORATORY SCIENCE, either Biology, Chemistry, or Physics, must be elected in all courses to meet graduation requirements.

COLLEGE PREPARATORY COURSE-SCIENCE MAJOR, is intended for those students who are preparing to enter a college of engineering; also scientific type of work such as mechanical work of any kind, aviation, etc. Spanish I and II may be carried in the third and fourth years as a fifth subject by the better students.



First Year	Second Year
(Social Science	(Social Science
(English	(English
General Science	Biology
General Math	Algebra I

Third Year	Fourth Year
(Social Science	(Social Science
(English	(English
Chemistry	Physics
Pl. Geometry	Algebra II, 1st
	Semester
	(Solid Geometry,
	2nd Semester

COLLEGE PREPARATORY COURSE-LIBERAL  
ART MAJOR is intended to prepare for  
entrance to college of Liberal Arts.

First Year	Second Year
(Social Science	(Social Science
(English	(English
General Math	Algebra I
Elective	Elective

Third Year	Fourth Year
(Social Science	(Social Science
(English	(English
Spanish I	Spanish II
Pl. Geometry	Elective

STENOGRAPHY COURSE offers training to those who desire to fit themselves for secretarial work. Those students who complete this course of study with superior grades should be able to do the work of a stenographer in most offices. Special emphasis is placed on shorthand and writing of business letters.

First Year  
(Social Science  
(English  
Intro. to Bus.  
General Math

Second Year  
(Social Science  
(English  
Typing I  
Elective

Third Year  
(Social Science  
(English  
Shorthand I  
Bookkeeping I

Fourth Year  
(Social Science  
(English  
Shorthand II  
Elective

BUSINESS COURSE is designed for those students who desire to take a general business course but do not intend to go into stenography.

First Year  
(Social Science  
(English

Second Year  
(Social Science  
(English



Intro, To Bus.	Typing I
General Math	Elective

Third Year	Fourth Year
(Social Science	(Social Science
(English	(English
Bookkeeping I	Elective
Typing II	Elective

AGRICULTURE COURSE is for boys who are interested in preparing themselves for work in the various fields of agriculture.

ART COURSE is for students who desire to prepare for work in the fine or applied arts.

HOME ECONOMICS COURSE is for girls. It is intended to offer subjects that will be of value to girls, regardless of what type of work or activity is to be followed after graduation from high school.

INDUSTRIAL ARTS COURSE is intended for boys who are looking forward to work in the construction trades. It includes a three year course in woodworking and mechanical and architectural drafting.

Enroll for \*Agriculture I, \*\*II, \*\*\*III, or \*Art I, \*\*II, \*\*\*III, or \*Home Economics I \*\*II, \*\*\*III, or \*Industrial Arts I, \*\*II, \*\*\*III, during the first three years in high school to major in any one of the courses listed, as follows:

First Year	Second Year
(Social Science	(Social Science
(English	(English
*	**
General Math	Elective
Third Year	Fourth Year
(Social Science	(Social Science
(English	(English
***	Elective
Elective	Elective

JOB EXPERIENCE COURSE is designed for students who desire to get work experience while attending school. A coordinator will work with the community divisions where students will receive proper placement. Work experience will earn credit toward graduation.



First Year  
(Social Science  
(English  
General Math  
Elective

Second Year  
(Social Science  
(English  
Elective  
Elective

Third Year  
(Social Science  
(English  
Employment-  
Problems  
Work Experience

Fourth Year  
(Social Science  
(English  
Employment-  
Problems  
Work Experience

EXTRA-CURRICULAR ACTIVITIES  
CLASSES IN SPECIAL ACTIVITIES will  
be offered in a special period.  
Students electing these classes will  
be required to be in regular attend-  
ance. These subjects will earn  $1/8$   
unit of credit per semester. Classes  
will meet twice a week, Monday and  
Thursday or Tuesday and Friday.

MUSIC: Band, Orchestra, Glee  
Club will meet twice a week plus  
some rehearsals. Recitals, concerts,  
and an operetta will be given dur-  
ing the year. Credit  $1/8$  per  
semester.

JOURNALISM: Editing and publishing the mimeographed school paper. Credit I/8 unit per semester.

PHOTOGRAPHY: A limited number of students will be instructed in taking pictures, developing film, printing and enlarging pictures. These will be used in the school annual. Credit I/8 unit per semester.

DRAMATICS: Production of the one-act plays each semester. Credit I/8 unit per semester.

FORENSICS: Debating, Extemporaneous speaking, and de-clamation. Credit I/8 unit per semester.

OTHER ACTIVITIES may be offered if there is a demand and if proper leadership can be procured.

9th Grade  
Soc. Sci.--Eng.  
General Science  
General Math  
Home Economics I  
Woodshop I

10th Grade  
Soc. Sci.--Eng.  
Biology  
Algebra I  
Home Economics II  
Shop II



Intro. To Bus  
Agriculture I  
Applied Art  
Band  
Orchestra  
Choral

Typing I  
Agriculture II  
Applied Art  
Band  
Orchestra  
Choral

11th Grade  
Soc. Sci.--Eng.  
Chemistry  
Plane Geometry  
Home Economics III  
Shop III  
Bookkeeping I  
Typing II  
Agriculture III  
Advertising Art  
Band  
Orchestra  
Choral  
Spanish I

12th Grade  
Soc. Sci.--Eng.  
Physics  
Chemistry  
Advanced Algebra  
Home Economics III  
Office Practice  
Typing I or II  
Agriculture III  
Advanced Painting  
Band  
Orchestra  
Choral  
Spanish II

\* \* \*

### Instructions For Students

ADMISSION-Pupils will be admitted to Freshman standing in the high school on presentation of a certificate of promotion from the eighth grade. Pupils having attend-

ed high school elsewhere must have an official transcript of their former school.

COLLEGE ENTRANCE REQUIREMENTS are changing. If you are looking forward to entering a certain-school, you should make inquiry and consult with the faculty advisor who will assist you in making out your high school program to meet the entrance requirements.

IN SELECTING YOUR COURSE AND ELECTIVES you should study well your previous work and your ability to do school work. Do not select a course or subject merely because a friend has done so. Make your own selection after careful study of your needs and interest and consultation with your parents and faculty advisor

CHANGE OF COURSE OR SUBJECT must be made during the first two weeks of the semester and must be approved by the principal and sanctioned by the parent.



FOUR UNITS of academic work make up a complete program. Each student is required to carry a full program unless by special arrangement between the parent and principal a part time program is approved. Students must continue to the end of the semester.

PHYSICAL AND HEALTH EDUCATION is required by the state, and the school is held responsible for carrying out a successful program. The students take up a study of health, prevention of disease, first aid, sanitation, etc.

Also, the instructors in charge will make careful studies of the physical needs of each student, and in cooperation with the health authorities, carry out a program of exercise, if needed, the student will be assigned to a rest period.

ELECTIVE SUBJECT will be taught if twenty or more students select it.

CARE OF SCHOOL PROPERTY----The buildings, grounds, and equipment of this high school are furnished for educational purposes. Students who deface school property by writing, cutting, scratching, or in any other manner injure the buildings or the furniture will (1) required to pay for the damage they have done and (2) expelled from the school for repeated offenses.

CUTTING CLASSES, forging excuses, using profane language, hazing, or in any way interfering with the work of the school, will not tolerated. Gentlemanly conduct and a right attitude toward the entire group are expected from all students.

CLASSIFICATION OF STUDENTS--Students are classified according to the number of units of credit earned. Entering students are Freshman. To be classified as a Sophomore, one must have completed  $3\frac{1}{2}$  units; Juniors,  $7\frac{1}{2}$  units; Seniors, 12 units. Each class is organized under the direction of faculty advisors. Class meetings are conducted by



elected class officers.

\* \* \*

## CLUBS

### Forensic Club:

The Forensic Club is an organization concerned with encouraging public speaking and emphasizing parliamentary law among students. All officers are urged to join. Advisor-Miss Hagan.

### Future Farmers of America:

This club was organized for the purpose of encouraging young boys in the field of agriculture. All Ag. students are eligible. Advisor-Mr. Tyrrel.

### Girls Athletic Association:

The Girls Athletic Association is to promote good sportsmanship and friendship in varied participation of all sports. In order to become and remain a member of the organization, each girls must participate as a player or an official. For further information turn to the Consti-

tution. Advisor Miss Hughes.

#### Lettermen:

This club was organized for the purpose of emphasizing sportsmanship and cooperating with the student body and the athletic department. Each student, who earns a letter is eligible for membership. For further information see the Constitution. Advisor Mr. Stringer

#### Los Pan Americanos:

This club is opened to all those interested in creating better relationship between our country and the South American countries by trying to understand their cultural, political, social, and economic problems. Advisor Mrs. Yeaton

#### Science:

The Science Club was formed by students who realized the value of a good and sound knowledge of the sciences. This club is open to any one who is interested. Advisor---Mr. Brunstein.



# CANAL HIGH SCHOOL YELLS

## ECHO YELL:

Right side

Left side

C

C

A

A

N

N

A

A

L

L

CANAL

CANAL

CANAL (together)

California Poppies

Arizona cactus

We play (Butte)

Just for practice

Sky rocket

(Boys whistle, girls yell)

Boom Ahhhhhhhhhhhhhhh

Canal High Varsity

Cc-can-nn-nal

Can-nal

CA-NAL-----CANAL

With a

c

" "

c

" "

c-a-n

With a n  
" " n  
" " n-a-l

With a c-a-n and a n-a-l  
With a c-a-n and a n-a-l

C-a-n-a-l

CANAL-----CANAL

Hail, Hail the gangs all here  
Never mind the weather  
Here we are together  
Hail, Hail the gangs all here  
Let the trouble start right now  
\* \* \*

# WELCOME YELL:

Hello, Butte  
Hello, Butte  
Butte, Butte, Hello, Butte!  
\* \* \*

# LOCOMOTIVE

Slow  
c-a-n-a-l  
rah-rah-rah-rah  
Little Faster  
c-a-n-a-l  
rah-rah-rah-rah

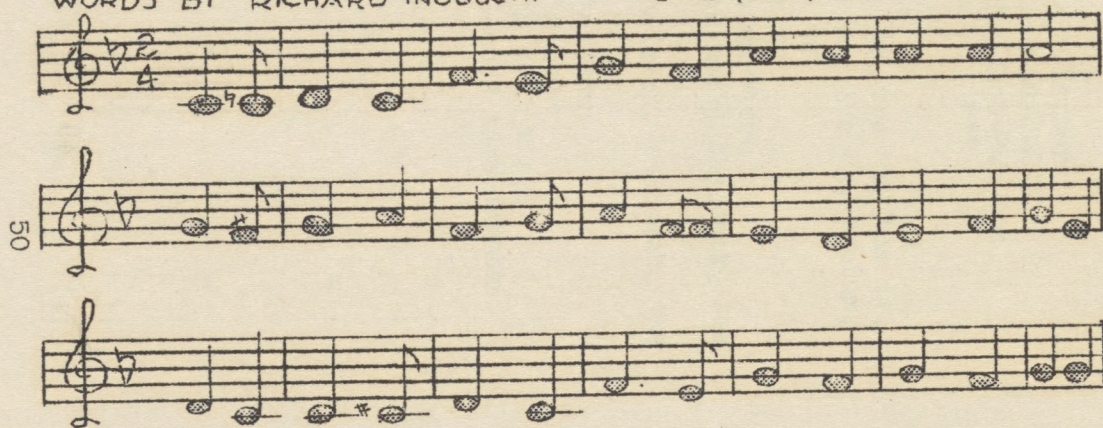


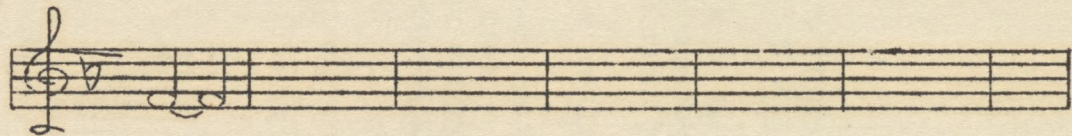
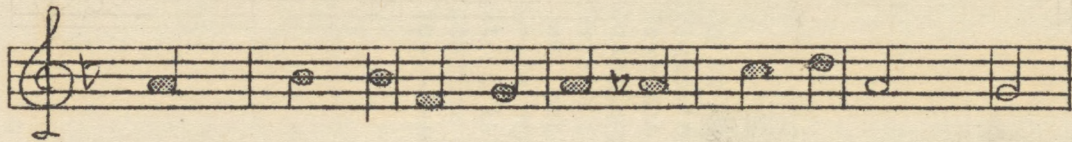
# ON TO VICTORY

(FIGHT SONG)

WORDS BY RICHARD INOBUCHI

TUNE FROM "ON WISCONSIN"









ON TO VICTORY  
(FIGHT SONG)

On to vic-tory on to vic-tory  
Fight 'em for our fame  
Take the ball right thru the  
touchdown  
Sure this time we'll win rah!  
rah! rah!  
Pride and glo-ry is the sto-ry  
It is in our soul  
Keeping up our mer-ry standard  
to-----our goal.

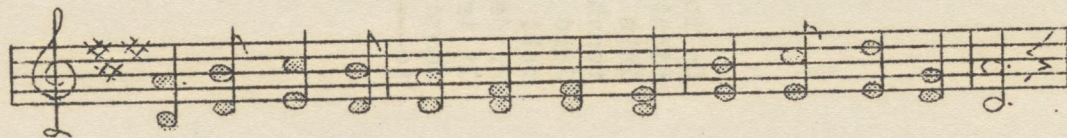


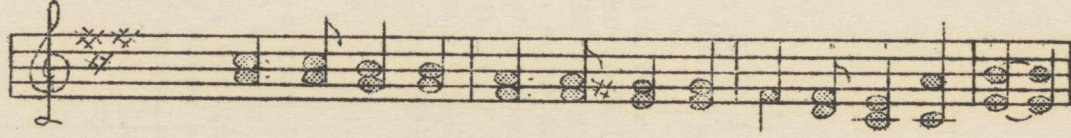
# HAIL CANAL

(SCHOOL HYMN)

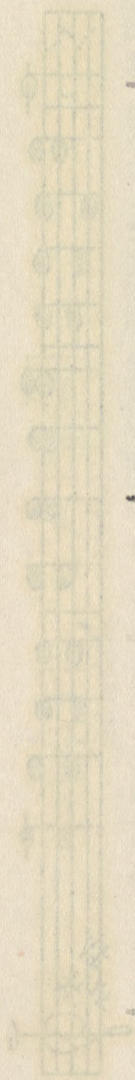
WORDS BY GEORGE IWATSUBO    TUNE FROM "CORNELL ALMA MATER"

54









HAIL CANAL  
(SCHOOL HYMN)

Flu-tter-ing Blue and Gold,  
Hail to the CA\*NAL.  
No-ver will thy spi-rit die---  
Ne've thy walls de-cay.  
To--you we're true for ev-er,  
And without last en-deavor  
We--Hail our AL-MA MA-TER  
Hail, all Hail CA-NAL

(2nd Verse)

Noble and strong to thee,  
With loyal hearts we sing  
Your glory, our pledge,  
We'll ever Honor and Cheer  
Sons and daughters all give praise  
Hail, all Hail, CA-NAL.



The first of these is the fact that the  
 world is not a perfect place. It is full of  
 pain and sorrow, and we must learn to  
 live with it. We must learn to be  
 content with what we have, and not  
 always with what we want. We must  
 learn to be patient, and to wait for  
 the things that are to come. We must  
 learn to be kind, and to love our  
 neighbors as ourselves. We must learn  
 to be true, and to stand for the right  
 even when it is unpopular. We must  
 learn to be brave, and to face our  
 fears. We must learn to be strong, and  
 to stand up for our principles. We must  
 learn to be wise, and to use our  
 powers of reason. We must learn to be  
 good, and to do what is right. We must  
 learn to be happy, and to find joy in  
 the things of this world. We must learn  
 to be free, and to live our lives as we  
 see fit. We must learn to be  
 responsible, and to take care of our  
 duties. We must learn to be  
 honest, and to tell the truth. We must  
 learn to be clean, and to keep our  
 bodies and our homes in good order. We  
 must learn to be healthy, and to take  
 care of our physical well-being. We must  
 learn to be peaceful, and to avoid  
 violence. We must learn to be  
 loving, and to care for the needs of  
 others. We must learn to be  
 grateful, and to thank God for all that  
 He has done for us. We must learn to  
 be faithful, and to keep our promises.  
 We must learn to be brave, and to face  
 our fears. We must learn to be strong,  
 and to stand up for our principles. We  
 must learn to be wise, and to use our  
 powers of reason. We must learn to be  
 good, and to do what is right. We must  
 learn to be happy, and to find joy in  
 the things of this world. We must learn  
 to be free, and to live our lives as we  
 see fit. We must learn to be  
 responsible, and to take care of our  
 duties. We must learn to be  
 honest, and to tell the truth. We must  
 learn to be clean, and to keep our  
 bodies and our homes in good order. We  
 must learn to be healthy, and to take  
 care of our physical well-being. We must  
 learn to be peaceful, and to avoid  
 violence. We must learn to be  
 loving, and to care for the needs of  
 others. We must learn to be  
 grateful, and to thank God for all that  
 He has done for us. We must learn to  
 be faithful, and to keep our promises.

# FACULTY

Miss Hagan-----	English-Soc. Sci.
Mr. Osaki-----	"
Miss Lancaster-----	"
Miss Akiyama-----	"
Mrs. Yeaton-----	" " -Span.
Mrs. Peddy-----	Home Ec. "
Miss Uda-----	"
Mr. Higgins-----	Math. "
Mr. Brunstein-----	" Science
Mr. Onoda-----	" "
Mr. Tyrrel-----	Agri. "
Miss Taylor-----	Commerical
Miss Matsumoto-----	"
Miss Nakata-----	"
Mr. Slate-----	Art
Mr. Shimizu-----	Shop
Mr. Mountain-----	Music
Miss Sasaki-----	"
Mr. Stringer-----	P.E.-Math
Miss Hughes-----	"
Miss Ishimine-----	"
Masae Arita-----	Librarian
Helen Tenoka-----	"
Marty Ota-----	"
Dr. Kehoe-----	Job Experience Adviser
Mr. J. P. McVoy-----	Principal



# STUDENT DIRECTORY

## CLASS OF 1944

Ando; Wasco, 26-9-B	Kingsburg
Aoki; Kenneth, 5-13-D	Rio Vista
Araki; Yoshiko, 27-7-C	Selma
Bungo, Hazel, 24-2-C	Kingsburg
Butsumvo, Misako; 24-4-D	Long Beach
Deguchi, Hiroshi, 23-5-A	Kingsburg
Doi, Kimiko, 7-4-D	Courtland
Fujikawa; Yoshiko, 6-5-A	Vacaville
Fujimoto; Edwin, 24-5-C	Fowler
Fujimoto; George, 26-6-C	Fowler
Fujishige, Helen, 27-9-A	Sanger
Fukuzawa; Ken, 20-5-D	Los Angeles
Furukawa, Sam, 21-11-C	Concord
Hamada, Kimiko, 9-1-A	Kingsburg
Handa, Iseo, 5-5-B	Danville
Harada, Fumie, 6-2-D	Courtland
Heshimura, Takashi, 24-1-A	Parlier
Hatanaka, Evelyn, 7-6-B	Courtland
Hayashi, Jane, 5-12-A	Berkeley
Heyang Shizuko, 9-11-B	Sanger
Hirabayashi, Hiroshi, 9-12-A	Sanger
Hirose, Yasuko; 6-8-B	Courtland
Ichihana, Marv, 9-9-A	Reedley
Ii, Mary Ann; 22-7-D	Redondo
Imura, Harry, 5-12-D	Santa Clara
Inoue, Edward, 10-6-C	Selma

Iwanago, Hideo, 8-4-C	Los Angeles
Izuno, Toyoki, 23-2-A	Selma
Kaneko, Frank, 21-8-B	Stockton
Katayama, Kimiko, 26-5-A	Fowler
Katayama, Tadashi, 23-8-A	Selma
Kawada, Alyce, 24-11-D	Los Angeles
Kimura, John, 26-4-C	Kingsburg
Koda, Roy, 25-8-D	Parlier
Komoto, Ted, 9-8-A	Parlier
Kubota, Yvonne, 6-11-C	Courtland
Kuramoto, Harry, 10-12-D	Selma
Masumoto, Masao, 23-2-C	Selma
Matsuda, Miyoko, 25-14-B	Kingsburg
Matsuda, George, 8-5-B	Los Angeles
Matsuda, Handy, 7-8-B	San Fernando
Matsumoto, Bessie, 22-5-C	Gilroy
Matsunaga, Lena, 23-6-B	Sanger
Misaki, Masako, 23-3-D	Selma
Miyai, Aiko, 4-12-A	Winters
Mizumoto, Kiyoshi, 10-3-D	Selma
Muranishi, Frank, 7-11-B	Courtland
Murayama, Hiroshi, 27-3-C	Kingsburg
Murayama, Toyoko, 9-7-B	Kingsburg
Nagata, Percy, 10-1-B	Reedley
Nagata, Tom, 26-7-C	Selma
Nakagawa, Ikuko, 3-1-D	Stockton
Nishihara, Yeyeko, 3-8-D	Los Angeles
Ohara, Masayuki, 24-8-D	Kingsburg
Oino, Mary, 20-3-D	Suisun
Oka, Michio, 24-11-C	Oakland
Omori, James, 10-3-B	Parlier



Otani, Tommy, 22-6-A	Woodlake
Otani, Yuico, 3-2-B	Winters
Sakamoto, James, 26-3-C	Reedley
Segimoto, Andrew, 16-1-A	Snoqualmine
	Washington
Shimada, Hisao, 25-5-A	Kingsburg
Shimizu, Eloise, 25-5-A	Selma
Suechika, Mae, 23-8-D	Sanger
Sugai, Kenji, 24-5-D	Fowler
Tacimi, Marion, 23-12-D	Kingsburg
Takata, Harry, 26-2-D	Reedley
Takata, Suveko, 20-2-D	Stockton
Takayama, Mitsuru, 10-8-C	Selma
Takeuchi, Frank, 7-2-C	Courtland
Tanouye, Tom, 10-3-A	Parlier
Tara, Emiko, 23-4-A	Selma
Terada, Masateru, 21-2-C	Concord
Togami, Frank, 6-6-D	Vacaville
Totsubo, Jack, 10-5-B	Pasadena
Tsuboi, Kazuo, 25-8-C	Parlier
Tsugawa, Emiko, 20-3-D	Suisun
Tsuii, Hirotsugu, 21-2-A	Concord
Umeda, Lily, 23-12-C	Selma
Waki, Harry, 8-3-C	Los Angeles
Watanabe, Frank, 9-3-B	Reedley
Yamaguchi, Jimmy, 4-5-A	Los Angeles
Yamaguchi, William, 26-5-C	Fowler
Yamada, Shoji, 27-3-D	Kingsburg
Yamamoto, Eiii, 10-10-C	Parlier
Yamamoto, Sadako, 23-4-B	Selma
Yamashita, Teruko, 21-4-D	Selma

Yasui, Masayo, 3-4-C	Winters
Yoneda, Gladys, 26-3-B	San Jose
Yoshida, Nobuto, 27-3-B	Kingsburg
Yoshihara, Hisae, 5-3-D	Vacaville
Yoshimi, George, 21-9-A	Stockton
Yoshimoto, Kazumi, 26-2-C	Reedley
Yoshino, Billie, 10-6-A	Selma
Yoshimura, Youko, 20-13-D	Alameda

# CLASS OF 1945

Adachi, Jane, 7-10-A	Walnut Grove
Aragaki, Aiko, 27-12-D	Parlier
Arakaki, Toshiko, 10-7-D	Selma
Asamoto, Ken, 9-5-C	Parlier
Deguchi, Kazuko, 23-5-A	Kingsburg
Doi, Jean, 10-12-C	Fowler
Doi, Nancy, 7-4-D	Courtland
Egusa, Mutsumi, 4-11-A	Fairfield
Ehara, Ben, 21-14-D	Concord
Fujimoto, Hideo, 3-9-C	Los Angeles
Fujimoto, Mary, 25-3-D	Del Rey
Furukawa, Susie, 21-11-C	Concord
Hamaguchi, Kiyo, 24-7-D	Sanger
Hamataka, Robert, 25-5-C	Reedley
Handa, Kumiko, 5-5-B	Vacaville
Hara, May Ann, 4-7-C	Concord
Hara, Misuye, 27-6-A	Fowler
Harada, Aiko, 6-4-C	Los Angeles
Hashimoto, Shizu, 24-3-C	Gilroy



Hata, Teruye, 22-10-A	Reedley
Hikido, Shogo, 4-11-D	Danville
Hirakawa, Harry, 26-4-B	Kingsburg
Hiromoto, Haruo, 6-11-A	Rio Vista
Hokoda, Katsumi, 9-4-B	Hollywood
Imada, Kinji, 10-9-C	Parlier
Ishii, Hank, 4-3-C	Los Angeles
Itomura, Michiko, 8-3-C	Los Angeles
Kaneshige, Yasuko, 6-3-A	Fowler
Kasugai, Rikiye, 3-2-A	Los Angeles
Katayama, Kazuo, 26-5-A	Fowler
Kawahara, Grace, 22-7-D	Reedley
Kawahara, Lindv, 22-7-C	Reedley
Kawano, Teri, 26-12-B	Fowler
Kawata, Fumiko, 10-13-D	Selma
Kawauchi, Alice, 4-8-A	Concord
Kido, Marv, 3-2-D	Lafayette
Kobayashi, Betty, 26-10-D	Selma
Koda, Bob, 25-8-B	Parlier
Kotsubo, Kazuye, 23-4-D	Selma
Kouno, Alyce, 25-11-A	Fowler
Kuramoto, Roy, 10-12-D	Selma
Masaki, George, 6-9-C	Los Angeles
Masaoka, George, 8-7-A	Los Angeles
Masumoto, Akiyoshi, 23-2-C	Selma
Matsumoto, Susumu, 4-10-D	Pleasanton
Matsuura, Taro, 26-5-B	Fowler
Mori, Joe, 4-10-C	Fairfield
Mori, Tokiko, 23-8-C	Fowler
Morimasu, Setsuko, 9-9-D	Fowler

Motoishi, Haruko, 8-9-B	Los Angeles
Murakami, George, 3-3-B	Courtland
Murakami, Harriette, 8-11-B	L.A.
Murakami, Kimi, 3-3-B	Courtland
Murata, Hitoshi, 20-13-B	Concord
Muto, Mitsy, 3-7-A	Fairfield
Nakagawa, Hayako, 3-12-D	Stockton
Nakahara, May, 16-13-D	Vacaville
Nakanishi, Francis, 4-4-C	Concord
Nakatsuka, Ruby, 6-3-D	Tujunga
Nishi, John, 6-10-D	Rio Vista
Nishihiro, Takeo, 3-3-D	Los Angeles
Nishimoto, Kikuo, 5-12-C	Vacaville
Nishina, Ann, 22-4-B	Fowler
Nishioka, Jitsuko, 5-11-A	Vacaville
Nitasaka, Kazue, 4-9-D	Concord
Nogawa, Yoshio, 3-7-D	Selma
Notiri, Kazuko, 21-9-C	Stockton
Nozumi, Jean, 27-4-D	Parlier
Oda, Edith, 25-12-D	Fowler
Ogawa, Kiyoshi, 27-2-D	Kingsburg
Okamoto, Yoko, 6-2-B	Rio Vista
Oishi, Minoru, 23-9-D	Selma
Okino, Minoru, 24-5-D	Parlier
Osumi, Toshiko, 27-11-D	Parlier
Otani, Tomico, 3-2-B	Winters
Oto, Kazuo, 7-6-D	Courtland
Ryono, Takashi, 27-12-B	Selma



Sakai, June, 22-5-B	Selma
Sakamoto, Ruth, 23-6-D	Fowler
Sakata, Hiroshi, 3-10-A	Pleasanton
Sakuragi, Mabel, 23-2-D	Parlier
Sakuragi, Florence, 23-2-D	Parlier
Sano, Yoshiyuki, 3-7-C	Vacaville
Sasaki, Hisako, 23-12-B	Selma
Seiji, Jane, 5-7-B	Vacaville
Shiine, Michiko, 22-7-B	Kingsburg
Shimoido, May, 26-8-B	Kingsburg
Sugimoto, Carolé, 22-2-D	Fowler
Sugimoto, Kazuo, 22-2-D	Fowler
Tagawa, Kasumi, 26-8-D	Selma
Tagawa, Noble, 26-8-D	Selma
Takahashi, Masakazu, 5-3-C	Vacaville
Takano, Yoshiye, 23-8-D	Parlier
Tanaka, Mitzi, 23-10-C	Selma
Tanoue, Satoru, 10-4-B	Parlier
Toda, Nobuko, 8-3-B	Los Angeles
Totsubo, Yoshiye, 10-5-B	Parlier
Tsugawa, Misako, 20-3-D	Fairfield
Uchiyama, Takako, 22-11-A	Reedley
Waki, Yasushi, 8-5-C	Los Angeles
Yaji, George, 22-7-A	Sanger
Yamada, Shoji, 6-10-B	Rio Vista
Yamada, Yoshio, 26-11-C	Parlier
Yamamoto, James, 27-8-C	Sanger
Yamamoto, Michiye, 27-2-A	Sanger
Yasui, Takiko, 3-4-C	Winters
Yasumoto, Nellie, 10-9-B	Sanger

Yomogida, Sam, 27-8-B	Sanger
Yoshikawa, Masaru, 6-4-D	Courtland
Yoshikawa, Betty, 6-4-D	Courtland
Yoshimi, Jane, 21-9-A	Stockton

# CLASS OF 1946

Bungo, Sam, 24-8-A	Kingsburg
Fujimoto, Alice, 23-3-C	Sanger
Fujimoto, Jimmie, 6-5-B	Vacaville
Fujimoto, William, 24-5-C	Fowler
Fujioka, Raite, 23-4-C	Selma
Fukuzawa, Annabelle, 20-7-D	L.A.
Fukuzawa, Roy, 20-12-A	Los Angeles
Hachiye, Miyoko, 26-12-A	Parlier
Harada, Miyako, 6-2-D	Walnut Grove
Hata, Grace, 5-9-A	Vacaville
Heyano, Shigeru, 9-11-B	Sanger
Hirakawa, Peggy, 26-6-A	Kingsburg
Hirano, Pete, 26-6-A	Kingsburg
Hirata, Ken, 3-12-C	Stockton
Hirotsu, Gary, 7-7-C	Walnut Grove
Hoshino, Marie, 3-6-C	Vacaville
Hoshizaki, Frank, 3-5-D	Suisun
Ichiki, Kanji, 7-9-C	Walnut Grove
Ii, Yoshiye, 22-6-D	Del Rey
Ishihara, Lonny, 10-7-B	Selma
Ishimine, Nobuko, 20-11-B	L.A.
Iwamura, Itsuko, 21-5-D	Selma



Jio, Haruo, 6-8-C	Pacheco
Kadonaga, Hideo, 8-5-A	Los Angeles
Kaneko, Harry, 21-8-B	French Camp
Kato, Katie, 7-13-D	Walnut Grove
Kato, Kiyoshi, 7-13-D	Stockton
Kawa, Kenji, 7-8-A	Los Angeles
Kawahara, Herbert, 22-7-C	Reedley
Kimura, Jimmy, 26-4-C	Kingsburg
Kobashi, Kimiyo, 8-9-A	Parlier
Kumashiro, Pearl, 24-10-D	Del Rey
Kumataka, Midori, 22-13-A	Parlier
Kawahara, Kikuye, 23-5-C	Reedley
Masacka, Margaret, 8-7-A	Los Angeles
Matsuda, Nobuko, 25-11-C	Kingsburg
Matsuda, Yoko, 6-6-C	Vacaville
Matsumoto, Alyce, 22-5-C	Gilroy
Matsunaga, Tom, 23-6-B	Sanger
Matsuura, Helen, 5-11-C	Vacaville
Mizufune, Sumiko, 3-11-C	Winters
Morishige, Pat, 24-3-C	Fowler
Murayama, Aiko, 27-3-C	Kingsburg
Morita, Paul, 27-11-C	Los Angeles
Nakahara, Rose, 16-13-D	Vacaville
Nishi, Edward, 6-10-D	Rio Vista
Nishi, Jewel, 16-2-A	Hayward
Nishioka, Taira, 5-11-A	Vacaville
Noda, Yoshiye, 23-10-D	Selma
Ogawa, Reiro, 8-6-C	Los Angeles
Oto, Ted, 7-6-C	Walnut Grove
Sakata, George, 7-5-D	Walnut Grove

Sakuragi, Maude, 23-2-D	Parlier
Sano, Toshitaka, 3-7-C	Vacaville
Sasaki, Haruo, 8-11-	<b>Los Angeles</b>
Segimoto, Arthur, 16-1-	Snoqualmine
	Fall
Seiji, Yuriko, 3-5-B	Suisun
Shimada, Masaki, 10-9-D	Solma
Sugai, Mary, 24-3-D	Fowler
Takahashi, Kikuyo, 5-3-C	Vacaville
Takemori, Irene, 24-7-C	Solma
Takate, Marty, 20-2-D	Stockton
Tamura, Harry, 5-4-A	Vacaville
<b>Tanigawa</b> , Lillian, 23-7-B	Del Rey
Tara, Fujiko, 23-4-A	Solma
Terasaki, Ichiro, 6-13-B	Los Angeles
Toeami, Kenneth, 10-2-B	Sanger
Torii, Charles, 9-4-D	Solma
Toyama, Kenney, 10-2-B	Malaga
Tsufure, Satoru, 3-13-A	Parlier
Tsuruda, Ann, 22-8-D	Parlier
Uchimoto, Laura, 4-6-A	Fairfield
Uchiyama, Hisako, 22-11-A	Sanger
Uda, Roy, 8-6-D	Fullerton
Watanabe, Kazuko, 4-3-D	Concord
Yamamoto, Fusako, 23-4-B	Solma
Yabanda, Alice, 3-13-D	Brentwood
Yama, Johnnie, 4-5-A	Solma
Yamada, Miyo, 6-4-A	Vacaville
Yamamoto, Tommy, 25-11-B	Kingsburg
Yamamoto, Wataru, 10-10-D	Parlier
Yamashita, Shoji, 4-11-C	Denville



Yano, Rose, 8-2-D	Walnut Grove
Yoneyama, Yukio, 22-12-B	Sanger
Yuki, Nobue, 16-2-C	Auburn

# CLASS OF 1947

Adachi, Isamu, 7-10-A	Walnut Grove
Aoki, Norio, 5-13-D	Rio Vista
Arakaki, Haruko, 10-7-D	Selma
Araki, Kenso, 27-7-D	Selma
Fukagawa, Nadine, 27-12-C	Kingsburg
Fukagawa, Roy, 27-12-C	Kingsburg
Fujioka, George, 25-12-D	Parlier
Fukuzawa, Bobby, 20-5-D	Los Angeles
Gamou, Doris, 26-7-A	Selma
Hagihara, June, 26-1-A	Fowler
Hamada, June, 26-1-A	Selma
Hanada, Yukio, 9-1-A	Kingsburg
Hamaguchi, Howard, 24-7-D	Sanger
Hara, Hideko, 27-6-A	Fresno
Hatanaka, Michael, 7-6-B	Walnut Grove
Hiratsuko, Toshinori, 20-1-C	Byron
Hirokane, Kote, 7-11-C	Courtland
Hirokane, Sachiko, 7-11-C	Courtland
Hiromoto, Rose, 6-11-A	Walnut Grove
Ichimoto, Satsuko, 4-2-D	Vacaville
Ide, Louise, 5-3-A	Parlier
Ishimine, Mary, 20-11-B	Los Angeles
Itomura, Kazuko, 8-3-C	Los Angeles
Izuno, Tomie, 23-2-A	Selma

Kaneshige, Rose, 6-3-A	Guadalupe
Katayama, George, 26-5-A	Fowler
Kato, Jean, 26-12-A	Fowler
Kawara, Kenji, 10-13-D	Selma
Kimoto, John, 9-8-B	Parlier
Kishimoto, Mary, 9-2-C	Parlier
Kobata, Akira, 25-2-D	Parlier
Kunioka, Chizuko, 7-6-A	Walnut Grove
Kuramoto, Sam, 7-7-D	Walnut Grove
Kuramoto, Yoshiko, 10-12-D	Selma
Matsuoka, Frank, 9-10-D	Kingsburg
Miyai, Thomas, 4-12-A	Winters
Murakami, June, 8-11-C	Los Angeles
Murakami, Shigeru, 3-3-B	Walnut Grove
Murata, Atsuko, 20-13-A	Concord
Murotsune, Tom, 10-4-A	Selma
Naganuma, George, 25-13-B	Parlier
Nagata, Lily, 26-7-C	Kingsburg
Nakagawa, Kimiko, 3-12-D	Stockton
Nakamura, Bessie, 23-5-D	Parlier
Nakata, Akiko, 26-13-B	Kingsburg
Nakata, May, 8-4-D	Los Angeles
Nakata, Sho, 26-13-B	Kingsburg
Nakatani, Jon, 4-10-A	Concord
Nakatsuka, Helen, 6-3-D	Tujunga
Nishimura, Corrine, 3-11-A	Cordelia
Nitta, Masumi, 10-3-C	Parlier
Okamoto, Chizuko, 6-2-B	Walnut Grove
Okino, Chizuye, 24-6-D	Parlier
Sakata, Johnson, 7-5-D	Walnut Grove
Sase, Kimiko, 10-11-D	Kingsburg



Seiji, Hideo, 5-7-B	Vacaville
Shigaki, Henry, 5-10-A	Liberty Is.
Shimizu, Russell, 25-5-A	Selma
Tagawa, Tom, 26-8-D	Selma
Takata, Hideko, 20-2-D	Stockton
Takata, Misao, 26-2-D	Parlier
Takata, Richard, 20-2-D	Stockton
Takayama, Ruby, 25-7-B	Parlier
Takeda, Yukiaki, 5-13-A	Vacaville
Tanisawa, Seichi, 24-2-D	Kingsburg
Togami, Polly, 6-6-D	Vacaville
Uda, Rose, 8-6-D	Buna Park
Uyemura, Ivan, 23-6-A	Sanger
Yahanda, Alfred, 3-13-D	Brentwood
Yamada, Aiko, 26-11-C	Kingsburg
Yamada, Tom, 5-1-B	Vacaville
Yamada, Suyenori, 27-3-C	Kingsburg
Yamamoto, Mary, 21-7-D	Fresno
Yamamoto, Tsugi, 25-11-B	San Jose
Yamane, Ken, 22-9-C	Fowler
Yamashita, Sumiko, 21-4-D	Selma
Yasui, Peggy, 3-4-C	Winters
Yasumoto, John, 10-9-B	Del Rey
Yokoga a, Yoshi, 24-10-B	Selma
Yokoyama, Irvine, 10-10-B	Del Rey
Yoshihara, Miyoko, 5-3-D	Vacaville
Yoshikawa, Patricia, 6-4-D	Courtland
Yoshimura, Minoru, 20-13-D	Alameda

Acknowledgements

Lillian Bearss

Minoru Shinmoto

Maxine Hagan

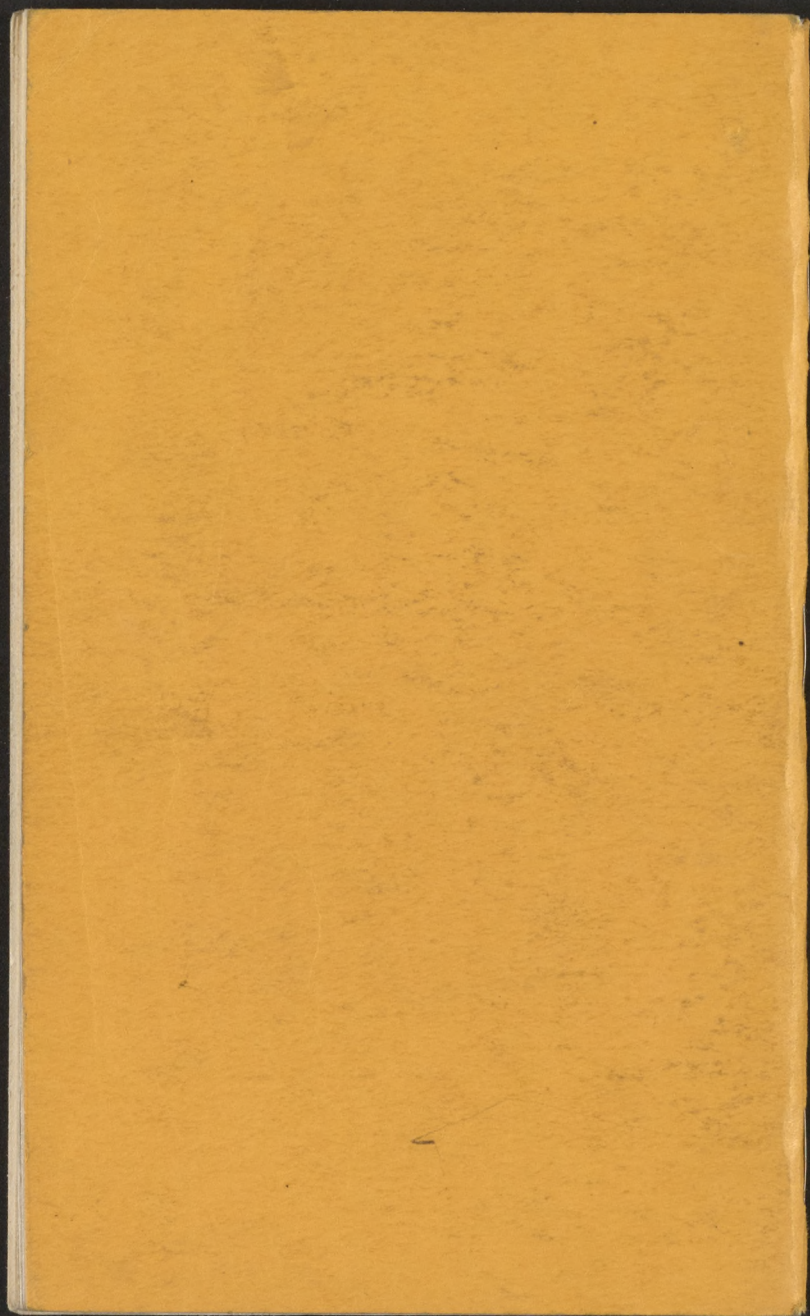
Office Staff

J. P. McVey

Faculty

Summer '43 Publication Staff





Sila River - Education  
UCO

# BEAR TRAILS

~~10430~~

FILE COPY





K4.39

BEAR TRAILS

HANDBOOK  
OF  
CANAL HIGH SCHOOL  
RIVERS, ARIZONA

1943-1944



IDENTIFICATION

PROPERTY OF.....

CLASS.....

ADDRESS.....

# STAFF

EDITOR.....George Matsuda  
ASS'T EDITOR.....Katsumi Hokoda  
BUSINESS MANAGER.....Tom Nagata  
LITERARY EDITORS....Evelyn Hatanaka  
                                .....Lily Umeda  
MAKE-UP EDITOR.....Yuico Otani  
                                .....Alyce Kawada



## PREFACE

For the Freshman Class For those students who are not thoroughly acquainted with their school, this booklet has been prepared.

Between these covers you will find the foundations of Canal High School: its Constitution, its regulations, its organization, its faculty and its students.

Remember you'll never lose the way if you take the "Bear Trail!"

## CONTENTS

HISTORY.....	6
CALENDAR.....	7
GENERAL INFORMATION:	
ATTENDANCE.....	10
DAILY SCHEDULE.....	10
REQUIREMENTS.....	11
REPORT CARDS.....	12
HONOR ROLL.....	13
HONOR SOCIETY.....	13
BULLETINS.....	14
LIBRARY.....	14
SCHOOL NURSE.....	15
PROGRAM CHANGES.....	15
LOST AND FOUND.....	16
FIRE REGULATIONS.....	16
CONSTITUTION.....	17
OUTLINE OF SUBJECTS.....	32
ORGANIZATIONS:	
FORENSICS.....	44
F.F.A.....	44
G.A.A.....	44
LETTERTOWN.....	45
Los Pan Americanos .....	45
SCIENCE.....	45
YELLS AND SONGS.....	48
FACULTY DIRECTORY.....	59
STUDENT DIRECTORY.....	60



## HISTORY

On October 12, 1942 the doors of Canal High School opened. Eager and ambitious students, 500 strong, from all walks of life, enrolled for various subjects under the several Caucasian and evacuee teachers.

The students were disappointed at not having beautiful oak desks, books, and large buildings and in having to sit on nail barrels and the floor, but never for a moment did they leave their desire for knowledge and forget the value of education.

The enthusiastic student body overcame these handicaps and without delay adopted the school colors, Blue and Gold; the school emblem, the Golden Bear; and the motto, "Enter to learn, go forth to serve." With the aid of the faculty, the Constitution Committee drew up a school constitution which was immediately ratified by a two-thirds majority of the student body.

Today, Canal High School is proud

to boast that our past year has been successful, thanks to the full cooperation of an understanding faculty and student body. We do not have all the modern conveniences of "back home", but we realize that knowledge comes not from marble floors and landscaped gardens but studying and working together.

Yes, enter to learn and go forth to serve--to serve our fellow Americans, and Americans of Japanese ancestry in the outside world!

\* \* \*

#### SOCIAL CALENDAR 1943-1944

##### September

13: School term began

##### October

9-10: Publication Bazaar

12: School Anniversary

15: Get-Acquainted Dance

18: Dr. E. Stanley Jones



## November

- 11: Armistice Day
- 24: Freshman Day-Assembly-Dance
- 25: Thanksgiving Day
- 26: Holiday
- Home-Coming Day-Alumni
- Sophomore Class Party
- Junior Social

## December

- Freshman Get-Together
- Los Pan Americanos Social
- Junior Class Party
- 22: Christmas Program
- 23: Christmas vacation begins

## January

- 2: Christmas vacation ends
- Senior Class Party
- 28: End of first semester
- Club Social

## February

- 12: Lincoln's Birthday
- 14: Valentine's Day
- 22: Washington's Birthday

## March:

- Freshman Class Party
- Sophomore Assembly
- Senior Picnic and Hike

## March

Easter Parade (king-queen)  
Easter Hunt-Bunny Hop

## April

1-10: Spring Holiday  
Freshman Hike

## May

9: Mother's Day  
Senior Ditch Day (host to  
Putte Seniors)  
Freshman Assembly  
Farewell Social  
Sophomore Party  
Junior Class Party

## June

Junior-Senior Prom  
4: Baccalaureate Services  
Senior Banquet  
8: Commencement

\* \* \*



## GENERAL INFORMATION

### Attendance:

If absent, a student must bring a written excuse to the office and obtain an absence slip. This slip is to be signed by the teachers of the classes from which the student was absent. The slip is then left with the teacher, who signed the slip last.

A student must obtain a tardy slip from the office for tardiness to class. A good reason is required.

Three unexcused tardies a week make one ineligible to receive admits until the matter is cleared.

### Daily Schedule:

#### Morning:

From 8:00 to 8:45 (Activity  
Period)

" 8:50 " 9:45

" 9:50 " 10:45

" 10:50 " 11:45

Noon:

From 1:00 to 1:55

" 2:00 " 2:55

" 3:00 " 3:55

Assembly Schedule:

Morning:

From 8:50 to 9:30

" 9:35 " 10:15

" 10:20 " 11:00

" 11:05 " 11:45

Noon:

From 1:00 to 1:55

" 2:00 " 2:55

" 3:00 " 3:55

(Frosh-Soph Assembly)

(Jr-Sr Assembly)

\* \* \*

Requirements:

Subjects required for graduations  
are:

4 years of English

4 years of social science

1 year of laboratory science

(biology, chemistry or physics)



1 year of mathematics  
(general math or algebra)  
4 years of physical education

A student must then select courses to total at least sixteen credits in addition to physical education.

Students should be aware of the fact that graduation requirements and college entrance requirements are different.

In general, college requirements are:

At least 3 credits in English.

At least 2 credits in math  
(algebra and geometry)

At least 2 credits in foreign language.

At least 2 credits in social science.

Elective subjects to make a total of 16.

#### Report Cards:

Report cards are scheduled to be issued the week following the six weeks period. The cards are to be

signed and returned to the subject teachers on the following day.

### Honor Roll:

Any student making nine points is awarded an Honor Roll Membership Card. The following point system is used; "A" - 3 points, "B" - 2 points and "C" - 1 point. A "D", or "F", or "incomplete" will disqualify.

### National Honor Society:

The Canal High School chapter of the National Honor Society was granted its charter, No. 2712, on May 12, 1943.

The society's ideals are, to create a high standard of scholarship, to encourage participation in school activities and to develop personality, character and leadership. Membership is attained by those whose outstanding qualities in service, leadership, character, and scholarship are recognized by the faculty who participate in the final selection of members.



One can easily recognize a student who is a member of the society by the pin he proudly wears.

### Bulletins:

The main bulletin board is located in front of the high school office. Each student should look at this at least once each day for the notices. The bulletin board in the library, is equally helpful.

### Library:

The book center of Canal High is located in 14-D. There, certain regulations have been set up in order to give the student the greatest possible use of the library material.

The regulations are:

<u>Type of Book</u>	<u>Examples</u>	<u>Time Allowed</u>
---------------------	-----------------	---------------------

Books for general read-	Fiction Biography	One Week
-------------------------	----------------------	----------

<u>Type of Book</u>	<u>Examples</u>	<u>Time Allowed</u>
Books for supplementary reading	History Geography	Three days
Reserve books	Textbook, other books in great demand	Hour to hour during the day, and over-night

Books that are overdue will cost the student 2¢ a day for non-reserve books and 5¢ for reserve books.

#### School Nurse:

The school nurse, and her assistants have their office at the school. From 9 a.m. to 5 p.m. they treat patients for sprains, cuts, and give other first aid treatment. Home calls are also made by the nurse if a student is absent from school three days.

#### Program Changes:

Students desiring to change programs may do so with the permission



of the subject teacher and faculty advisor. Programs must be changed at the beginning of the semester. Exceptions are made when it is deemed necessary and beneficial to the student.

#### Lost and Found:

All articles found on the school premises should be turned in at the Canal High Office where they may be claimed by the rightful owners, who must prove ownership.

#### Fire Regulations:

The fire bell is a continuous gong. When you hear this, leave room and walk along the south side of the barrack, westward. continue walking until you reach the ground past the Community Stage. Do not run!

CONSTITUTION OF  
THE ASSOCIATED STUDENTS OF  
CANAL HIGH SCHOOL  
Rivers, Arizona

PREAMBLE

We, the Associated Students of Canal High School, in order to provide for Student government, promote school spirit, secure greater cooperation between faculty and students, serve efficiently our community and to inculcate the ideals of Americanism, do hereby establish this Constitution.

Article I-Name, Colors, Motto, and Emblem

Section I. The organization shall be known as the Associated Students of Canal High School.

Section II. The colors of this organization shall be blue and gold.

Section III. The Motto: Enter to learn; go forth to serve.

Section IV. The emblem of this organization shall be "Golden Bears."



## Article II-Membership

The Associated Students of Canal High School shall be comprised of all registered students.

## Article III-Student Body Officers

Section I. The officers of the Associated Students shall consist of a President; Vice President, Secretary, Treasurer, Chairman of Publications, Yell Leader, and Sergeant-at-Arms.

Section II. Qualification. All officers of the Associated Students shall be regular registered students and the President shall be a senior during his term in office. If the President resigns and the Vice President becomes President, the above requirement is void.

Section III-Duties. The President shall:

- (a) Preside over all student body meetings.
- (b) Be chairman of the Student Council.
- (c) Vote only in case of a tie.

- (d) Have power to call special meetings.

The Vice President shall:

- (a) Assume all duties of the President in his absence and become the President upon his resignation.
- (b) Be Social Chairman and have supervision of the Freshman Assembly as stated in Article V of the By-laws.

The Secretary shall:

- (a) Take minutes of all Student Body and Student Council meetings.
- (b) Attend to all Student Body and Student Council Correspondence.

The Treasurer shall:

- (a) Take charge of all student funds with the help of the auditor who shall be a member of the faculty.  
The auditor must countersign all outgoing checks and counter - in dorse all incoming
- (b) Give reports when asked.



The Chairman of Publication shall:

- (a) Appoint his committee with the help of the advisor.
- (b) With his committee, appoint the editor of the annual and school paper and approve the staff of both.
- (c) Look after the welfare of all school publications and be Publicity Chairman.
- (d) Work in accordance with the Student Body Treasurer.

The Yell Leader shall:

- (a) Choose two students who shall be his assistants during his term in office.
- (b) Lead yells and songs at school rallies and school games.

The Sergeant-at-Arms shall:

- (a) Keep order at all Student Body and Student Council meetings.
- (b) Select a committee, and with his committee, take charge of all social welfare, such as, letters of sympathy, congratulations, etc.

Section IV. Terms. Each officers shall hold his office for two semesters.

Section V. Meetings. The meetings shall be called by the President when deemed necessary.

#### Article IV-Student Council

Section I. Membership. The Student Council shall be comprised of all Student Body Officers, all Class Presidents, and one representative from each class. This group shall select two faculty members to be its advisors.

Section II. Duties. The duties of the Student Council shall be:

- (a) Transact student business.
- (b) Have jurisdiction over all student activities.
- (c) Approve student financial affairs.
- (d) Check the petitions nominating Student Body Officers.
- (e) Approve the declination of the candidates for Student Body Offices by 2/3 majority.



- (f) Approve petitions for amendments to the constitution.
- (g) Approve the resignations of Student Body Officers by a 2/3 majority.
- (h) Appoint officers to fill in vacancies of the Student Body Offices, with the exception of the Student body President, within ten days.
- (i) Approve all school awards.

Section III. Terms. The members of the Student Council shall serve for two semesters.

Section IV. Meetings. The Student Council shall hold regular meetings every Wednesday and special meetings when necessary. A quorum must be present in order to transact business.

#### Article V-Class Officers

Section I. The class officers shall consist of a President, Vice President, Secretary, Treasurer, Yell Leader, and a Class Representative.

Section II. Duties. The President shall:

- (a) Preside over all class meetings.
- (b) Have power to call special meetings.
- (c) Be a member of the Student Council.

The Vice President shall:

- (a) Assume all duties of the President in his absence.
- (b) Be social chairman.

The Secretary shall:

- (a) Take minutes of all class meetings.
- (b) Attend to all class correspondence.

The Yell Leader shall lead all class yells, songs, and rallies.

The Class Representatives shall:

- (a) Represent the class to the Student Council.
- (b) Give reports concerning the council meetings when asked by the Class President.



Section III. Terms. Each officer shall hold his office for two semesters.

#### Article VI-Elections.

Section I. Secret ballots shall be used: the candidate receiving the majority vote in the final election is elected. In case of a tie, a re-election between those who are tied will be held. A student may be a candidate for only one office of an organization. If he is nominated for more than one office, he must choose one from them.

Section II. The procedure of the Student Body election shall be as follows:

- (a) During the fifth week before the dismissal of school, petitions containing a minimum of thirty signatures shall be submitted to the Student council.
- (b) During the fourth week, the Student Council shall announce the candidates and a primary election shall be held. The persons receiving

the two highest number of votes will be candidates in the final election.

- (c) During the third week, campaign speeches shall be made and the final election shall be held.

1943 election shall be held as follows:

- (a) After the adoption of this constitution, petitions may be submitted to the High School Office.
- (b) The office shall announce the candidates and the election date.

Section III. The procedure of the class election shall be as follows:

- (a) The election must be held by the end of the second week of school.
- (b) Nominations shall be made from the floor at the class meeting.

#### Article VII-Finance

1. All organization funds are to be banked with the Auditor who shall



in turn deposit the separate funds in one account at a down-town bank.

2. All treasurers will deposit funds with the Auditor on the day on which they are collected, or the following day.

3. The Auditor will give each treasurer a receipt for all funds deposited.

4. The Auditor shall keep accurate accounts of all separate funds and prepare monthly statements for each group.

5. Student organizations shall prepare a budget and file this budget with the Auditor after it has been approved by the organization's advisor.

6. Each organization advisors shall approve all expenditures before they are made. Requests for funds from the Auditor will be granted if signed by the advisor and the treasurer of the group, if sufficient funds are in their account.

7. Each organization shall keep accurate accounts of their collections and payments, such accounts to be audited once a semester.

8. The Auditor shall be a member of the faculty appointed by the principal.

9. If there are not sufficient funds in the Student Body Treasury, Athletic awards shall not be issued.

### Article VIII-Organizations

The procedure of forming an organization shall be:

(a) Obtain a minimum of ten signatures on a petition.

(b) Obtain a sponsor.

(c) Write and submit a constitution to the Student Council.

After the approval of the Student Council, it becomes an official organization of the school.

### Article IX

Nothing in this constitution shall conflict in any way with regulations of the War Relocation Authority or any orders of its executives.

### Article X-Amendments

The procedure of amending this constitution shall be as follows:

(a) A petition containing signatures of one-third of the entire student body shall be submitted to the Student



council.

(b) This petition must be approved by two-thirds of the entire student council.

If the petition is approved, the constitution shall be amended.

#### BY-LAWS Article I-Quorum

A quorum shall be two-thirds of the membership of an entire body.

#### Article II-Boys Athletics

Section I. Boys athletic awards shall be made as follows: Students receiving letter awards in athletics shall be nominated by the faculty member in charge of the sport and approved by the Student Council in regular session.

Section II. The following types of awards shall be given to the members who have earned them by the methods stated in Section I:

- (a) A six inch chenille drop block "C" shall be awarded to the members of the Varsity team.
- (b) A five inch chenille drop block "C" shall be awarded to

the members of the B class team.

- (C) A chenille "C" within a six inch diamond shall be awarded to the members of the C class team.
- (d) Boys athletic letters shall be a gold letter upon a blue background.
- (e) Yell leader's letter shall be a six inch chenille drop block "C", with a blue megaphone across the middle.
- (f) Managers' letters shall be the same as all athletic letters, the size according to the class they manage, with the work "HGR" engraved in blue on the upper middle part of the "C".

Section III. No student shall receive more than one letter a year. Emblems of the sports participated in shall be put on the letter. In case of a student earning a letter in two classes, a letter of the higher class shall be awarded.



Section IV. All students participating in school athletics must abide by the Arizona State interscholastic rulings.

### Article III-Girls Athletics

Section I. The girls' major sports are volleyball, speedball, baseball, basketball, and hiking.

Section II. The girls shall earn their awards by the following methods:

- (a) If a player plays the majority of the class's major sport games, she shall receive 100 points.
- (b) For individual sports such as badminton, pingpong, and tennis, they shall receive points by the "Ladder System".  
For first place, 100 points  
For second place, 75 points  
For third place, 50 points  
For fourth place, 25 points

Section III. The following types of awards shall be given to the members who have earned them as stated

in Section II:

(a) When a player makes 250 points, she shall become a member of the Girls Athletic Association.

(b) When a player makes 500 points, a four inch felt numeral shall be awarded.

(c) When a player makes 1000 points, a five inch felt blockletter shall be awarded.

(d) When a player makes 1600 points, a five inch chenille drop block letter, the colors same as the boys shall be awarded.

#### Article IV-Publication

Section I. Annual. The editor shall appoint his staff which shall consist of an assistant editor, literary editor, boys' athletic editor, girls' athletic editor, art editor, class editor, calendar editor, organization editor, senior activities editor, a head typist, and a mimeographer.



## Article V-Initiation

There shall be no freshmen initiation, but they must present an assembly to the student body under the supervision of the student body vice-president.

## Article VI-Ratification

This constitution, in order to be adopted, must be approved by two-thirds of both the Constitutional Convention and the student body respectively.

\* \* \*

## Outline of Subjects

The following outlines have been arranged to fit the needs of students attending the high school. A careful study of this paper permit the student to elect that course of study which best suits his needs and his abilities. Faculty advisor will assist the students in making wise and proper selections. Parents are urged to assist.

ENGLISH and the SOCIAL SCIENCES are integrated and required for four years in Canal High School. This core-course constitutes one half of the work done in the high school and will be broad and inclusive. It will include a thorough study of English literature, reading, speaking and writing. The Social Studies will cover the fields of Community Civics, World History, American History, Problems of Democracy, and the required study on the Federal and State Constitutions.

LABORATORY SCIENCE, either Biology, Chemistry, or Physics, must be elected in all courses to meet graduation requirements.

COLLEGE PREPARATORY COURSE-SCIENCE MAJOR, is intended for those students who are preparing to enter a college of engineering; also scientific type of work such as mechanical work of any kind, aviation, etc. Spanish I and II may be carried in the third and fourth years as a fifth subject by the better students.



First Year  
(Social Science  
(English  
General Science  
General Math

Second Year  
(Social Science  
(English  
Biology  
Algebra I

Third Year  
(Social Science  
(English  
Chemistry  
Pl. Geometry

Fourth Year  
(Social Science  
(English  
Physics  
Algebra II, 1st  
Semester  
(Solid Geometry,  
2nd Semester

COLLEGE PREPARATORY COURSE-LIBERAL  
ART MAJOR is intended to prepare for  
entrance to college of Liberal Arts.

First Year  
(Social Science  
(English  
General Math  
Elective

Second Year  
(Social Science  
(English  
Algebra I  
Elective

Third Year  
(Social Science  
(English  
Spanish I  
Pl. Geometry

Fourth Year  
(Social Science  
(English  
Spanish II  
Elective

STENOGRAPHY COURSE offers training to those who desire to fit themselves for secretarial work. Those students who complete this course of study with superior grades should be able to do the work of a stenographer in most offices. Special emphasis is placed on shorthand and writing of business letters.

First Year  
(Social Science  
(English  
Intro. to Bus.  
General Math

Second Year  
(Social Science  
(English  
Typing I  
Elective

Third Year  
(Social Science  
(English  
Shorthand I  
Bookkeeping I

Fourth Year  
(Social Science  
(English  
Shorthand II  
Elective

BUSINESS COURSE is designed for those students who desire to take a general business course but do not intend to go into stenography.

First Year  
(Social Science  
(English

Second Year  
(Social Science  
(English



Intro, To Bus.	Typing I
General Math	Elective

Third Year	Fourth Year
(Social Science	(Social Science
(English	(English
Bookkeeping I	Elective
Typing II	Elective

AGRICULTURE COURSE is for boys who are interested in preparing themselves for work in the various fields of agriculture.

ART COURSE is for students who desire to prepare for work in the fine or applied arts.

HOME ECONOMICS COURSE is for girls. It is intended to offer subjects that will be of value to girls, regardless of what type of work or activity is to be followed after graduation from high school.

INDUSTRIAL ARTS COURSE is intended for boys who are looking forward to work in the construction trades. It includes a three year course in woodworking and mechanical and architectural drafting.

Enroll for \*Agriculture I, \*\*II, \*\*\*III, or \*Art I, \*\*II, \*\*\*III, or \*Home Economics I \*\*II, \*\*\*III, or \*Industrial Arts I, \*\*II, \*\*\*III, during the first three years in high school to major in any one of the courses listed, as follows:

First Year	Second Year
(Social Science	(Social Science
(English	(English
*	**
General Math	Elective
Third Year	Fourth Year
(Social Science	(Social Science
(English	(English
***	Elective
Elective	Elective

JOB EXPERIENCE COURSE is designed for students who desire to get work experience while attending school. A coordinator will work with the community divisions where students will receive proper placement. Work experience will earn credit toward graduation.



First Year  
(Social Science  
(English  
General Math  
Elective

Second Year  
(Social Science  
(English  
Elective  
Elective

Third Year  
(Social Science  
(English  
Employment-  
Problems  
Work Experience

Fourth Year  
(Social Science  
(English  
Employment-  
Problems  
Work Experience

EXTRA-CURRICULAR ACTIVITIES  
CLASSES IN SPECIAL ACTIVITIES will

be offered in a special period. Students electing these classes will be required to be in regular attendance. These subjects will earn 1/8 unit of credit per semester. Classes will meet twice a week, Monday and Thursday or Tuesday and Friday.

MUSIC: Band, Orchestra, Glee Club will meet twice a week plus some rehearsals. Recitals, concerts, and an operetta will be given during the year. Credit 1/8 per semester.

JOURNALISM: Editing and publishing the mimeographed school paper. Credit I/8 unit per semester.

PHOTOGRAPHY: A limited number of students will be instructed in taking pictures, developing film, printing and enlarging pictures. These will be used in the school annual. Credit I/8 unit per semester.

DRAMATICS: Production of the one-act plays each semester. Credit I/8 unit per semester.

FORENSICS: Debating, Extemporaneous speaking, and de-clamation. Credit I/8 unit per semester.

OTHER ACTIVITIES may be offered if there is a demand and if proper leadership can be procured.

9th Grade  
Soc. Sci.--Eng.  
General Science  
General Math  
Home Economics I  
Woodshop I

10th Grade  
Soc. Sci.--Eng.  
Biology  
Algebra I  
Home Economics II  
Shop II



Intro. To Bus  
Agriculture I  
Applied Art  
Band  
Orchestra  
Choral

Typing I  
Agriculture II  
Applied Art  
Band  
Orchestra  
Choral

11th Grade  
Soc. Sci.--Eng.  
Chemistry  
Plane Geometry  
Home Economics III  
Shop III  
Bookkeeping I  
Typing II  
Agriculture III  
Advertising Art  
Band  
Orchestra  
Choral  
Spanish I

12th Grade  
Soc. Sci.--Eng.  
Physics  
Chemistry  
Advanced Algebra  
Home Economics III  
Office Practice  
Typing I or II  
Agriculture III  
Advanced Painting  
Band  
Orchestra  
Choral  
Spanish II

\* \* \*

### Instructions For Students

ADMISSION-Pupils will be admitted to Freshman standing in the high school on presentation of a certificate of promotion from the eighth grade. Pupils having attend-

ed high school elsewhere must have an official transcript of their former school.

COLLEGE ENTRANCE REQUIREMENTS are changing. If you are looking forward to entering a certain-school, you should make inquiry and consult with the faculty advisor who will assist you in making out your high school program to meet the entrance requirements.

IN SELECTING YOUR COURSE AND ELECTIVES you should study well your previous work and your ability to do school work. Do not select a course or subject merely because a friend has done so. Make your own selection after careful study of your needs and interest and consultation with your parents and faculty advisor.

CHANGE OF COURSE OR SUBJECT must be made during the first two weeks of the semester and must be approved by the principal and sanctioned by the parent.



FOUR UNITS of academic work make up a complete program. Each student is required to carry a full program unless by special arrangement between the parent and principal a part time program is approved. Students must continue to the end of the semester.

PHYSICAL AND HEALTH EDUCATION is required by the state, and the school is held responsible for carrying out a successful program. The students take up a study of health, prevention of disease, first aid, sanitation, etc. Also, the instructors in charge will make careful studies of the physical needs of each student, and in cooperation with the health authorities, carry out a program of exercise, if needed, the student will be assigned to a rest period.

ELECTIVE SUBJECT will be taught if twenty or more students select it.

CARE OF SCHOOL PROPERTY----The buildings, grounds, and equipment of this high school are furnished for educational purposes. Students who deface school property by writing, cutting, scratching, or in any other manner injure the buildings or the furniture will (1) required to pay for the damage they have done and (2) expelled from the school for repeated offenses.

CUTTING CLASSES, forging excuses, using profane language, hazing, or in any way interfering with the work of the school, will not tolerated. Gentlemanly conduct and a right attitude toward the entire group are expected from all students.

CLASSIFICATION OF STUDENTS--Students are classified according to the number of units of credit earned. Entering students are Freshman. To be classified as a Sophomore, one must have completed  $3\frac{1}{2}$  units; Juniors,  $7\frac{1}{2}$  units; Seniors, 12 units. Each class is organized under the direction of faculty advisors. Class meetings are conducted by



elected class officers.

\* \* \*

## CLUBS

### Forensic Club:

The Forensic Club is an organization concerned with encouraging public speaking and emphasizing parliamentary law among students. All officers are urged to join. Advisor-Miss Hagan.

### Future Farmers of America:

This club was organized for the purpose of encouraging young boys in the field of agriculture. All Ag. students are eligible. Advisor-Mr. Tyrrel.

### Girls Athletic Association:

The Girls Athletic Association is to promote good sportsmanship and friendship in varied participation of all sports. In order to become and remain a member of the organization, each girls must participate as a player or an official. For further information turn to the Consti-

tution. Advisor Miss Hughes.

Lettermen:

This club was organized for the purpose of emphasizing sportsmanship and cooperating with the student body and the athletic department. Each student, who earns a letter is eligible for membership. For further information see the Constitution. Advisor Mr. Stringer

Los Pan Americanos:

This club is opened to all those interested in creating better relationship between our country and the South American countries by trying to understand their cultural, political, social, and economic problems. Advisor Mrs. Yeaton

Science:

The Science Club was formed by students who realized the value of a good and sound knowledge of the sciences. This club is open to any one who is interested. Advisor---Mr. Brunstein.



# CANAL HIGH SCHOOL YELLS

## ECHO YELL:

Right side

Left side

C

C

A

A

N

N

A

A

L

L

CANAL

CANAL

CANAL (together)

California Poppies

Arizona cactus

We play (Butte)

Just for practice

Sky rocket

(Boys whistle, girls yell)

Boom Ahhhhhhhhhhhhhhh

Canal High Varsity

Cc-can-nn-nal

Can-nal

CA-NAL-----CANAL

With a

c

" "

c

" "

c-a-n

With a	n
" "	n
" "	n-a-l

With a	c-a-n and a n-a-l
With a	c-a-n and a n-a-l

C-a-n-a-l

CANAL-----CANAL

Hail, Hail the gangs all here  
 Never mind the weather  
 Here we are together  
 Hail, Hail the gangs all here  
 Let the trouble start right now  
 \* \* \*

WELCOME YELL:

Hello, Butte  
 Hello, Butte  
 Butte, Butte, Hello, Butte!  
 \* \* \*

LOCOMOTIVE

Slow

c-a-n-a-l  
 rah-rah-rah-rah  
 Little FASTER  
 c-a-n-a-l  
 rah-rah-rah-rah

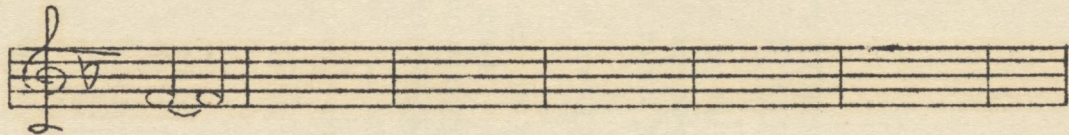
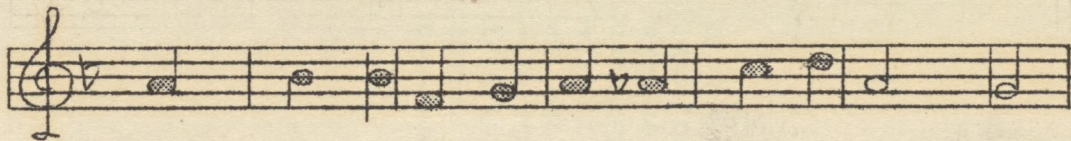


# ON TO VICTORY

(FIGHT SONG)

WORDS BY RICHARD INOBUCHI      TUNE FROM "ON WISCONSIN"









ON TO VICTORY  
(FIGHT SONG)

On to vic-tory on to vic-tory  
Fight 'em for our fame  
Take the ball right thru the  
touchdown  
Sure this time we'll win rah!  
rah! rah!  
Pride and glo-ry is the sto-ry  
It is in our soul  
Keeping up our mer-ry standard  
to-----our goal.

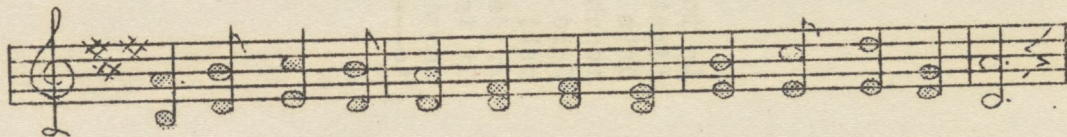


# HAIL CANAL

(SCHOOL HYMN)

WORDS BY GEORGE IWATSUBO    TUNE FROM "CORNELL ALMA MATER"

54









HAIL CANAL  
(SCHOOL HYMN)

Flu-tter-ing Blue and Gold,  
Hail to the CA\*NAL.  
No-ver will thy spi-rit die---  
Ne've thy walls de-cay.  
To--you we're true for ev-er,  
And without least en-deavor  
We--Hail our AL-MA MA-TER  
Hail, all Hail CA-NAL

(2nd Verse)

Noble and strong to thee,  
With loyal hearts we sing  
Your glory, our pledge,  
We'll ever Honor and Cheer  
Sons and daughters all give praise  
Hail, all Hail, CA-NAL.



WILLIAM  
(SECOND TERM)

My dear Mr. Gold,  
I have just received your letter of the 11th.  
I am sorry that I cannot give you a more  
satisfactory answer at present. I am  
very busy at the moment, but I will  
try to get it done as soon as possible.  
I am, Sir, very respectfully,  
Your obedient servant,  
WILLIAM

(2nd Term)

I am sorry to hear that you are  
not well. I hope you will soon  
be able to get on your feet again.  
I am, Sir, very respectfully,  
Your obedient servant,  
WILLIAM

# FACULTY

Miss Hagen-----	English-Soc. Sci.
Mr. Osaki-----	"
Miss Lancaster-----	"
Miss Akiyama-----	"
Mrs. Yeaton-----	" -Span.
Mrs. Peddy-----	Home Ec. "
Miss Uda-----	"
Mr. Higgins-----	Math. "
Mr. Brunstein-----	" Science
Mr. Onoda-----	" "
Mr. Tyrrel-----	Agri. "
Miss Taylor-----	Commerical
Miss Matsumoto-----	"
Miss Nakata-----	"
Mr. Slate-----	Art
Mr. Shimizu-----	Shop
Mr. Mountain-----	Music
Miss Sasaki-----	"
Mr. Stringer-----	P.E.-Math
Miss Hughes-----	"
Miss Ishimine-----	"
Masae Arita-----	Librarian
Helen Tanaka-----	"
Marty Ota-----	"

Dr. Kehoe-----Job Experience Adviser

Mr. J. P. McVey-----Principal



# STUDENT DIRECTORY

## CLASS OF 1944

Ando, Wasco, 26-9-B	Kingsburg
Aoki, Kenneth, 5-13-D	Rio Vista
Araki, Yoshiko, 27-7-C	Selma
Bungo, Hazel, 24-2-C	Kingsburg
Butsumvo, Misako, 24-4-D	Long Beach
Deguchi, Hiroshi, 23-5-A	Kingsburg
Doi, Kimiko, 7-4-D	Courtland
Fujikawa, Yoshiko, 6-5-A	Vacaville
Fujimoto, Edwin, 24-5-C	Fowler
Fujimoto, George, 26-6-C	Fowler
Fujishige, Helen, 27-9-A	Sanger
Fukuzawa, Ken, 20-5-D	Los Angeles
Furukawa, Sam, 21-11-C	Concord
Hamada, Kimiko, 9-1-A	Kingsburg
Handa, Isao, 5-5-B	Danville
Harada, Fumie, 6-2-D	Courtland
Heshimura, Takashi, 24-1-A	Parlier
Hatanaka, Evelyn, 7-6-B	Courtland
Hayashi, Jane, 5-12-A	Berkeley
Heyang Shizuko, 9-11-B	Sanger
Hirabayashi, Hiroshi, 9-12-A	Sanger
Hirose, Yasuko, 8-3-B	Courtland
Ichihana, Marv, 9-9-A	Reedley
Ii, Mary Ann, 22-7-D	Redondo
Imura, Harry, 5-12-D	Santa Clara
Inoue, Edward, 10-6-C	Selma

Iwanago, Hideo, 8-4-C	Los Angeles
Izuno, Toyoki, 23-2-A	Selma
Kaneko, Frank, 21-8-B	Stockton
Katayama, Kimiko, 26-5-A	Fowler
Katayama, Tadashi, 23-8-A	Selma
Kawada, Alyce, 24-11-D	Los Angeles
Kimura, John, 26-4-C	Kingsburg
Koda, Roy, 25-8-D	Parlier
Komoto, Ted, 9-8-A	Parlier
Kubota, Yvonne, 6-11-C	Courtland
Kuramoto, Harry, 10-12-D	Selma
Masumoto, Masao, 23-2-C	Selma
Matsuda, Miyoko, 25-14-B	Kingsburg
Matsuda, George, 8-5-B	Los Angeles
Matsuda, Handy, 7-8-B	San Fernando
Matsumoto, Bessie, 22-5-C	Gilroy
Matsunaga, Lena, 23-6-B	Sanger
Misaki, Masako, 23-3-D	Selma
Miyai, Aiko, 4-12-A	Winters
Mizumoto, Kiyoshi, 10-3-D	Selma
Muranishi, Frank, 7-11-B	Courtland
Murayama, Hiroshi, 27-3-C	Kingsburg
Murayama, Toyoko, 9-7-B	Kingsburg
Nagata, Percy, 10-1-B	Reedley
Nagata, Tom, 26-7-C	Selma
Nakagawa, Ikuko, 3-1-D	Stockton
Nishihara, Yayeko, 3-8-D	Los Angeles
Ohara, Masayuki, 24-8-D	Kingsburg
Oino, Mary, 20-3-D	Suisun
Oka, Michio, 24-11-C	Oakland
Omori, James, 10-3-B	Parlier



Otani, Tommy, 22-6-A	Woodlake
Otani, Yuico, 3-2-B	Winters
Sakamoto, James, 26-3-C	Reedley
Segimoto, Andrew, 16-1-A	Snoqualmine
	Washington
Shimada, Hisao, 25-5-A	Kingsburg
Shimizu, Eloise, 25-5-A	Selma
Suechika, Mae, 23-8-D	Sanger
Sugai, Kenji, 24-5-D	Fowler
Tasimi, Marion, 23-12-D	Kingsburg
Takata, Harry, 26-2-D	Reedley
Takata, Suveko, 20-2-D	Stockton
Takeyama, Mitsuru, 10-8-C	Selma
Takeuchi, Frank, 7-2-C	Courtland
Tanouve, Tom, 10-3-A	Parlier
Tara, Emiko, 23-4-A	Selma
Terada, Masateru, 21-2-C	Concord
Togami, Frank, 6-6-D	Vacaville
Totsubo, Jack, 10-5-B	Pasadena
Tsuboi, Kazuo, 25-2-C	Parlier
Tsugawa, Emiko, 20-3-D	Suisun
Tsuii, Hirotsugu, 21-2-A	Concord
Umeda, Lilv, 23-12-C	Selma
Waki, Harry, 2-3-C	Los Angeles
Watanabe, Frank, 9-3-B	Reedley
Yamaguchi, Jimmy, 4-5-A	Los Angeles
Yamaguchi, William, 26-5-C	Fowler
Yamada, Shoji, 27-3-D	Kingsburg
Yamamoto, Eiii, 10-10-C	Parlier
Yamamoto, Sadako, 23-4-B	Selma
Yamashita, Teruko, 21-4-D	Selma

Yasui, Masayo, 3-4-C	Winters
Yoneda, Gladys, 26-3-B	San Jose
Yoshida, Nobuto, 27-3-B	Kingsburg
Yoshihara, Hisae, 5-3-D	Vacaville
Yoshimi, George, 21-9-A	Stockton
Yoshimoto, Kazumi, 26-2-C	Reedley
Yoshino, Billie, 10-6-A	Selma
Yoshimura, Youko, 20-13-D	Alameda

# CLASS OF 1945

Adachi, Jane, 7-10-A	Walnut Grove
Aragaki, Aiko, 27-12-D	Parlier
Arakaki, Toshiko, 10-7-D	Selma
Asamoto, Ken, 9-5-C	Parlier
Deguchi, Kazuko, 23-5-A	Kingsburg
Doi, Jean, 10-12-C	Fowler
Doi, Nancy, 7-4-D	Courtland
Egusa, Mutsumi, 4-11-A	Fairfield
Ehara, Ben, 21-14-D	Concord
Fujimoto, Hideo, 3-9-C	Los Angeles
Fujimoto, Mary, 25-3-D	Del Rey
Furukawa, Susie, 21-11-C	Concord
Hamaguchi, Kiyo, 24-7-D	Sanger
Hamataka, Robert, 25-5-C	Reedley
Handa, Kumiko, 5-5-B	Vacaville
Hara, May Ann, 4-7-C	Concord
Hara, Misuye, 27-6-A	Fowler
Harada, Aiko, 6-4-C	Los Angeles
Hashimoto, Shizu, 24-3-C	Gilroy



Hata, Teruye, 22-10-A	Reedley
Hikido, Shogo, 4-11-D	Danville
Hirakawa, Harry, 26-4-B	Kingsburg
Hiromoto, Haruo, 6-11-A	Rio Vista
Hokoda, Katsumi, 9-4-B	Hollywood
Imada, Kinji, 10-9-C	Parlier
Ishii, Hank, 4-3-C	Los Angeles
Itomura, Michiko, 8-3-C	Los Angeles
Kaneshige, Yasuko, 6-3-A	Fowler
Kasugai, Rikiye, 3-2-A	Los Angeles
Katayama, Kazuo, 26-5-A	Fowler
Kawahara, Grace, 22-7-D	Reedley
Kawahara, Lindv, 22-7-C	Reedley
Kawano, Teri, 26-12-B	Fowler
Kawata, Fumiko, 10-13-D	Selma
Kawauchi, Alice, 4-8-A	Concord
Kido, Marv, 3-2-D	Lafayette
Kobayashi, Betty, 26-10-D	Selma
Koda, Bob, 25-3-B	Parlier
Kotsubo, Kazuye, 23-4-D	Selma
Kouno, Alyce, 25-11-A	Fowler
Kuramoto, Roy, 10-12-D	Selma
Masaki, George, 6-9-C	Los Angeles
Masaoka, George, 8-7-A	Los Angeles
Masumoto, Akiyoshi, 23-2-C	Selma
Matsumoto, Susumu, 4-10-D	Pleasanton
Matsuura, Taro, 26-5-B	Fowler
Mori, Joe, 4-10-C	Fairfield
Mori, Tokiko, 23-8-C	Fowler
Morimasu, Setsuko, 9-9-D	Fowler

Motoishi, Haruko, 8-9-B	Los Angeles
Murekami, George, 3-3-B	Courtland
Murekami, Harriette, 8-11-B	L.A.
Murekami, Kini, 3-3-B	Courtland
Murata, Hitoshi, 20-13-B	Concord
Muto, Mitsy, 3-7-A	Fairfield
Nakagawa, Hayako, 3-12-D	Stockton
Nakahara, May, 16-13-D	Vacaville
Nekenishi, Francis, 4-4-C	Concord
Nekatsuka, Ruby, 6-3-D	Tajunga
Nishi, John, 6-10-D	Rio Vista
Nishihara, Takeo, 3-3-D	Los Angeles
Nishimoto, Kikuo, 5-12-C	Vacaville
Nishine, Ann, 22-4-B	Fowler
Nishioka, Jitsuko, 5-11-A	Vacaville
Nitasaka, Kazue, 4-9-D	Concord
Nogawa, Yoshio, 3-7-D	Selma
Nojiri, Kazuko, 21-9-C	Stockton
Nozumi, Jean, 27-4-D	Parlier
Oda, Edith, 25-12-D	Fowler
Ogawa, Kiyoshi, 27-2-D	Kingsburg
Okamoto, Yoko, 6-2-B	Rio Vista
Oishi, Minoru, 23-9-D	Selma
Okino, Minoru, 24-5-D	Parlier
Osumi, Toshiko, 27-11-D	Parlier
Oteni, Tomico, 3-2-B	Winters
Oto, Kazuo, 7-6-D	Courtland
Ryono, Takashi, 27-12-B	Selma



Sakai, June, 22-5-B	Selma
Sakamoto, Ruth, 23-6-D	Fowler
Sakata, Hiroshi, 3-10-A	Pleasanton
Sakuragi, Mabel, 23-2-D	Parlier
Sakuragi, Florence, 23-2-D	Parlier
Sano, Yoshiyuki, 3-7-C	Vacaville
Sasaki, Hisako, 23-12-B	Selma
Seiji, Jane, 5-7-B	Vacaville
Shiine, Michiko, 22-7-B	Kingsburg
Shimoido, May, 26-8-B	Kingsburg
Sugimoto, Carolé, 22-2-D	Fowler
Sugimoto, Kazuo, 22-2-D	Fowler
Tagawa, Kasumi, 26-8-D	Selma
Tagawa, Noble, 26-8-D	Selma
Takahashi, Masakazu, 5-3-C	Vacaville
Takano, Yoshiye, 23-8-D	Parlier
Tanaka, Mitzi, 23-10-C	Selma
Tanoue, Satoru, 10-4-B	Parlier
Toda, Nobuko, 8-3-B	Los Angeles
Totsubo, Yoshiye, 10-5-B	Parlier
Tsugawa, Misako, 20-3-D	Fairfield
Uchiyama, Takako, 22-11-A	Reedley
Waki, Yasushi, 8-5-C	Los Angeles
Yaji, George, 22-7-A	Sanger
Yamada, Shoji, 6-10-B	Rio Vista
Yamada, Yoshio, 26-11-C	Parlier
Yamamoto, James, 27-8-C	Sanger
Yamamoto, Michiye, 27-2-A	Sanger
Yasui, Takiko, 3-4-C	Winters
Yasumoto, Nellie, 10-9-B	Sanger

Yomogida, Sam, 27-8-B	Sanger
Yoshikawa, Masaru, 6-4-D	Courtland
Yoshikawa, Betty, 6-4-D	Courtland
Yoshimi, Jane, 21-9-A	Stockton

# CLASS OF 1946

Bungo, Sam, 24-8-A	Kingsburg
Fujimoto, Alice, 23-3-C	Sanger
Fujimoto, Jimmie, 16-5-B	Vacaville
Fujimoto, William, 24-5-C	Fowler
Fujioka, Raite, 23-4-C	Selma
Fukuzawa, Annabelle, 20-7-D	L.A.
Fukuzawa, Roy, 20-12-A	Los Angeles
Hachiye, Miyoko, 26-12-A	Parlier
Harada, Miyako, 6-2-D	Walnut Grove
Hata, Grace, 5-9-A	Vacaville
Heyano, Shigeru, 9-11-B	Sanger
Hirakawa, Peggy, 26-6-A	Kingsburg
Hireno, Pete, 26-6-A	Kingsburg
Hirata, Ken, 3-12-C	Stockton
Hirotsu, Gary, 7-7-C	Walnut Grove
Hoshino, Marie, 3-6-C	Vacaville
Hoshizaki, Frank, 3-5-D	Suisun
Ichiki, Kenji, 7-9-C	Walnut Grove
Ii, Yoshiye, 22-6-D	Del Rey
Ishihara, Lonny, 10-7-B	Selma
Ishimine, Nobuko, 20-11-B	L.A.
Iwamura, Itsuko, 21-5-D	Selma



Jio, Haruo, 6-8-C	Pacheco
Kadonaga, Hideo, 8-5-A	Los Angeles
Kaneko, Harry, 21-8-B	French Camp
Kato, Katie, 7-13-D	Walnut Grove
Kato, Kiyoshi, 7-13-D	Stockton
Kawa, Kenji, 7-8-A	Los Angeles
Kawahara, Herbert, 22-7-C	Reedley
Kimura, Jimmy, 26-4-C	Kingsburg
Kobashi, Kimiyo, 8-9-A	Parlier
Kumashiro, Pearl, 24-10-D	Del Rey
Kumataka, Midori, 22-13-A	Parlier
Kuwahara, Kikuye, 23-5-C	Reedley
Masaoka, Margaret, 8-7-A	Los Angeles
Matsuda, Nobuko, 25-11-C	Kingsburg
Matsuda, Yoko, 6-6-C	Vacaville
Matsumoto, Alyce, 22-5-C	Gilroy
Matsunaga, Tom, 23-6-B	Sanger
Matsura, Helen, 5-11-C	Vacaville
Mizufune, Sumiko, 3-11-C	Winters
Morishige, Pat, 24-3-C	Fowler
Murayama, Aiko, 27-3-C	Kingsburg
Morita, Paul, 27-11-C	Los Angeles
Nakahara, Rose, 16-13-D	Vacaville
Nishi, Edward, 6-10-D	Rio Vista
Nishi, Jewel, 16-2-A	Hayward
Nishioka, Taira, 5-11-A	Vacaville
Noda, Yoshiye, 23-10-D	Selma
Ogawa, Reiro, 8-6-C	Los Angeles
Oto, Ted, 7-6-C	Walnut Grove
Sakata, George, 7-5-D	Walnut Grove

Sakuragi, Maude, 23-2-D	Parlier
Sano, Toshitaka, 3-7-C	Vacaville
Sasaki, Haruo, 3-11-	<b>Los Angeles</b>
Segimoto, Arthur, 16-1-	Shoqualmine
	Fall
Seiji, Yuriko, 3-5-B	Suisun
Shimada, Masaki, 10-9-D	Solma
Sugai, Mary, 24-3-D	Fowler
Takahashi, Kikuyo, 5-3-C	Vacaville
Takemori, Irene, 24-7-C	Solma
Takata, Marty, 20-2-D	Stockton
Tamura, Harry, 5-4-A	Vacaville
<b>Tanigawa</b> , Lillian, 23-7-B	Del Rey
Tara, Fujiko, 23-4-A	Solma
Terasaki, Ichiro, 6-13-B	Los Angeles
Toeami, Kenneth, 10-2-B	Sanger
Torii, Charles, 9-4-D	Solma
Toyama, Kenney, 10-2-B	Malaga
Tsufure, Satoru, 3-13-A	Parlier
Tsuruda, Ann, 22-8-D	Parlier
Uchimoto, Laura, 4-6-A	Fairfield
Uchiyama, Hisako, 22-11-A	Sanger
Uda, Roy, 8-6-D	Fullerton
Watanabe, Kazuko, 4-3-D	Concord
Yamamoto, Fusako, 23-4-B	Solma
Yabanda, Alice, 3-13-D	Brentwood
Yama, Johnnie, 4-5-A	Solma
Yamada, Miyo, 6-4-A	Vacaville
Yamamoto, Tommy, 25-11-B	Kingsburg
Yamamoto, Wataru, 10-10-D	Parlier
Yamashita, Shoji, 4-11-C	Deville



Yano, Rose, 8-2-D	Walnut Grove
Yoneyama, Yukio, 22-12-B	Sanger
Yuki, Nobue, 16-2-C	Auburn

# CLASS OF 1947

Adachi, Isamu, 7-10-A	Walnut Grove
Aoki, Norio, 5-13-D	Rio Vista
Arakaki, Haruko, 10-7-D	Selma
Araki, Kenso, 27-7-D	Selma
Fukagawa, Nadine, 27-12-C	Kingsburg
Fukagawa, Roy, 27-12-C	Kingsburg
Fujioka, George, 25-12-D	Parlier
Fukuzawa, Bobby, 20-5-D	Los Angeles
Gamou, Doris, 26-7-A	Selma
Hagihara, June, 26-1-A	Fowler
Hamada, June, 26-1-A	Selma
Hanada, Yukio, 9-1-A	Kingsburg
Hamaguchi, Howard, 24-7-D	Sanger
Hara, Hideko, 27-6-A	Fresno
Hatanaka, Michael, 7-6-B	Walnut Grove
Hiratsuko, Toshinori, 20-1-C	Byron
Hirokane, Kote, 7-11-C	Courtland
Hirokane, Sachiko, 7-11-C	Courtland
Hiromoto, Rose, 6-11-A	Walnut Grove
Ichimoto, Satsuko, 4-2-D	Vacaville
Ide, Louise, 5-3-A	Parlier
Ishimine, Mary, 20-11-B	Los Angeles
Itomura, Kazuko, 8-3-C	Los Angeles
Izuno, Tomie, 23-2-A	Selma

Kaneshige, Rose, 6-3-A	Guadalupe
Katayama, George, 26-5-A	Fowler
Kato, Jean, 26-12-A	Fowler
Kawara, Kenji, 10-13-D	Selma
Kimoto, John, 9-8-B	Parlier
Kishimoto, Mary, 9-2-C	Parlier
Kobata, Akira, 25-2-D	Parlier
Kunioka, Chizuko, 7-6-A	Walnut Grove
Kuramoto, Sam, 7-7-D	Walnut Grove
Kuramoto, Yoshiko, 10-12-D	Selma
Matsuoka, Frank, 9-10-D	Kingsburg
Miyai, Thomas, 4-12-A	Winters
Murakami, June, 8-11-C	Los Angeles
Murakami, Shigeru, 3-3-B	Walnut Grove
Murata, Atsuko, 20-13-A	Concord
Murotsune, Tom, 10-4-A	Selma
Naganuma, George, 25-13-B	Parlier
Nagata, Lily, 26-7-C	Kingsburg
Nakagawa, Kimiko, 3-12-D	Stockton
Nakamura, Bessie, 23-5-D	Parlier
Nakata, Akiko, 26-13-B	Kingsburg
Nakata, May, 8-4-D	Los Angeles
Nakata, Sho, 26-13-B	Kingsburg
Nakatani, Jon, 4-10-A	Concord
Nakatsuka, Helen, 6-3-D	Tujunga
Nishimura, Corrine, 3-11-A	Cordelia
Nitta, Masumi, 10-3-C	Parlier
Okamoto, Chizuko, 6-2-B	Walnut Grove
Okino, Chizuye, 24-6-D	Parlier
Sakata, Johnson, 7-5-D	Walnut Grove
Sasa, Kimiko, 10-11-D	Kingsburg



Seiji, Hideo, 5-7-B	Vacaville
Shigaki, Henry, 5-10-A	Liberty Is.
Shimizu, Russell, 25-5-A	Selma
Tagawa, Tom, 26-8-D	Selma
Takata, Hideko, 20-2-D	Stockton
Takata, Misao, 26-2-D	Parlier
Takata, Richard, 20-2-D	Stockton
Takayama, Ruby, 25-7-B	Parlier
Takela, Yukiaki, 5-13-A	Vacaville
Tanisawa, Seichi, 24-2-D	Kingsburg
Togami, Polly, 6-6-D	Vacaville
Uda, Rose, 8-8-D	Buna Park
Uyemura, Ivan, 25-6-A	Sanger
Yahanda, Alfred, 3-13-D	Brentwood
Yamada, Aiko, 26-11-C	Kingsburg
Yamada, Tom, 5-1-B	Vacaville
Yamada, Suyenori, 27-3-C	Kingsburg
Yamamoto, Mary, 21-7-D	Fresno
Yamamoto, Tsugi, 25-11-B	San Jose
Yamane, Ken, 22-9-C	Fowler
Yamashita, Sumiko, 21-4-D	Selma
Yasui, Peggy, 3-4-C	Winters
Yasumoto, John, 10-9-B	Del Rey
Yokoga a, Yoshi, 24-10-B	Selma
Yokoyama, Irvine, 10-10-B	Del Rey
Yoshihara, Miyoko, 5-3-D	Vacaville
Yoshikawa, Patricia, 6-4-D	Courtland
Yoshimura, Minoru, 20-13-D	Alameda

Acknowledgements

Lillian Bearss

Minoru Shinmoto

Maxine Hasan

Office Staff

J. P. McVey

Faculty

Summer '43 Publication Staff



