

P2.26

67/14
C

| Ind. Total | Family Units | Members Comp Family Units |
|----------------|--------------|------------------------------|
| 22 | 3- | 4 |
| | 3- | 1 |
| | 3- | 3 |
| | | 1 |
| | | 1 |
| Week of Dec. 3 | to | 9th inc. |

Indefinite period

Total Ind

66

27

28

29

16

from November 26 to Dec. 2
Complete family
units

8 families

19 - Ind.

Members completing
one family unit

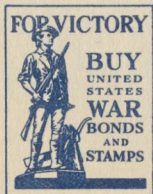
5 families

6 - Ind.

UNITED STATES
DEPARTMENT OF THE INTERIOR
WAR RELOCATION AUTHORITY

Indefinite Leaves issued from Dec. 31, 1944 to Jan. 13, 1945

| | |
|-----------------------------------|----|
| Indefinite Leaves issued | 58 |
| Complete family relocation (3) | 3 |
| Indefinite Leaves to complete (6) | 13 |



INDEFINITE LEAVES
January 14, 1945-Jan. 27, 1945

| | |
|---|-----|
| Total number of Ind. Leaves (Including the Change of Status) | 125 |
| Change of Status | 57 |
| Indefinite leaves completing the family relocation | |
| Number of families | 9 |
| Number of Individuals | 23 |
| Whole family taking Ind. Leaves | |
| Number of families | 13 |
| Number of Individuals | 15 |

INDEFINITE LEAVES
Jan. 28-Feb. 10, 1945

| | |
|--|----|
| Total Number of Ind. Leaves | 90 |
| Complete family relocation | |
| a. Number of families | 10 |
| b. Number of individuals | 14 |
| Families completing the family relocation | |
| a. Number of families | 14 |
| b. Number of individuals | 28 |
| Ind. Leaves to West Coast-Jan. 1-Feb. 10, 1945 | |
| Number of families | 14 |
| Number of individuals | 26 |

UNITED STATES
DEPARTMENT OF THE INTERIOR
WAR RELOCATION AUTHORITY

INDEFINITE LEAVES
February 11-24, 1945

| | |
|---|-----|
| Total Indefinite Leaves | 118 |
| Indefinite Leaves completeing the family relocation | |
| Families | 9 |
| Number of Individuals | 22 |
| Complete family relocation | |
| Families | 18 |
| Number of Individuals | 36 |
| West Coast Depature | |
| Number of Individuals | 41 |



WAR RELOCATION AUTHORITY

Minidoka Project
Hunt, Idaho

WEEKLY PROGRESS REPORT

Efforts of respective divisions in
the Relocation Program, for week ending Feb 3

Department Relocation

| Relocation Plan | Number of persons | Number of Families | Departures | Number of Persons |
|---------------------------------|---------------------|------------------------|-------------|-------------------|
| 1. Plans Pending | 121 | | Short Term | |
| 2. Plans Prepared | court 6 other 30 | 45 | West Coast | 0 |
| 3. Plans Approved | — | | Other areas | 0 |
| 4. Plans Accepted | all | all | | |
| 5. Total Number Cases Relocated | 68 | 8 ^{21 people} | | |
| No of Inquiries reported 113 | | | | |

1. Indicates total number of cases in hands of relocation offices. To be accumulative.
2. Indicates cases prepared this week.
3. Indicates plans approved jointly by Relocation and Welfare.
4. Indicates acceptance by the agencies on West Coast and elsewhere.
5. Indicates, for Relocation - total accumulated cases to date; for Welfare - total accumulated dependency cases relocated to date.

Jan. 14 - -58- released
 Jan. 27 - 125 "
 Febr. 10 $\frac{90}{273}$
 Febr. 24 - 118
 Mar. 3 - 68
459 since 1-1-45

To West Coast - since 1-1-45

$\frac{41}{26}$
 67 issued
 16 families

$\frac{459}{67}$
 3.92 other areas

families released since 1-1-45
 either entire or completely

8 - 21 people
 27 - 58 people
 24 - 42 people

22 - 38
 $\frac{19-16}{90}$ 175

96 families
 175 people since 1-1-45

6
 124

68
 74
 142

UNITED STATES
DEPARTMENT OF THE INTERIOR
WAR RELOCATION AUTHORITY

INDEFINITE LEAVES
March 4-10, 1945

| | |
|---|----|
| Total Indefinite Leaves | 74 |
| Indefinite Leaves Completeing the family relocation | |
| Families | 12 |
| Number of Individuals | 28 |
| Complete family relocation | |
| Families | 10 |
| Number of Individuals | 17 |
| West Coast Depature | |
| Number of Individuals | 6 |

7054
3-8-45



INDEFINITE LEAVES
March 11-17, 1945

| | |
|---|-----|
| Total Indefinite Leaves | 209 |
| Indefinite Leaves Completeing the Family relocation | |
| Families | 14 |
| Number of Individuals | 47 |
| Complete family relocation | |
| Families | 20 |
| Number of Individuals | 32 |
| West Coast Depature | |
| Number of Individuals | 37 |

WAR RELOCATION AUTHORITY

INDEFINITE LEAVES

March-18-24, 1945

| | |
|--|-----|
| Total Indefinite Leaves | 112 |
| Indefinite Leaves Completing the Family relocation | |
| Families | 16 |
| Number of Individuals | 38 |
| Complete family relocation | |
| Families | 22 |
| Number of Individuals | 37 |
| West Coast Depature | |
| Number of Individuals | 26 |



INDEFINITE LEAVES
March 25-31, 1945

| | |
|---|-----|
| Total Indefinite Leaves | 104 |
| Indefinite Leaves Completeing the Family relocation | |
| Families | 15 |
| Number of Individuals | 39 |
| Complete family relocation | |
| Families | 17 |
| Number of Individuals | 27 |
| West Coast Depature | |
| Number of Individuals | 29 |

INDEFINITE LEAVES
April 1-7, 1945

| | |
|---|-----|
| Total Indefinite Leaves | 107 |
| Indefinite Leaves Completeing the family relocation | |
| Families | 18 |
| Inidividuals | 48 |
| Complete family relocation | |
| Families | 16 |
| Individuals | 22 |
| West Coast Depature | |
| Number of Individuals | 23 |

INDEFINITE LEAVES
April 8-14, 1945

| | |
|---|----|
| Total Indefinite Leaves | 85 |
| Indefinite Leaves Completeing the Family relocation | |
| Families | 14 |
| Number of Individuals | 39 |
| Complete family relocation | |
| Families | 13 |
| Number of Individuals | 23 |
| West Coast Depature | |
| Number of Individuals | 12 |

WAR RELOCATION AUTHORITY

INDEFINITE LEAVES

April 15-21, 1945

| | |
|--|----|
| Total Indefinite Leaves | 97 |
| Indefinite Leaves Completing the Family relocation | |
| Families | 13 |
| Number of Individuals | 27 |
| Complete family relocation | |
| Families | 9 |
| Number of Individuals | 19 |
| West Coast Depature | |
| Number of Individuals | 40 |



INDEFINITE LEAVES
April 22-28, 1945

| | |
|--|-----|
| Total Indefinite Leaves | 139 |
| Indefinite Leaves Completing the Family relocation | |
| Families | 26 |
| Number of Individuals | 72 |
| Complete family relocation | |
| Families | 19 |
| Number of Individuals | 36 |
| West Coast Depature | |
| Number of Individuals | 28 |

INDEFINITE LEAVES
April 29-May 5, 1945

447 for Jan & Feb.
511 for March
456 for April.

| | |
|--|-----|
| Total Indefinite Leaves | 167 |
| Indefinite Leaves Completing the Family relocation | |
| Families | 28 |
| Number of Individuals | 85 |
| Complete Family relocation | |
| Families | 21 |
| Number of Individuals | 38 |
| West Coast Departure | |
| Number of Individuals | 29 |

INDEFINITE LEAVES
May 6-12, 1945

| | |
|--|-----|
| Total Indefinite Leaves | 166 |
| Indefinite Leaves Completing the Family relocation | |
| Families | 33 |
| Number of Individuals | 70 |
| Complete Family relocation | |
| Families | 30 |
| Number of Individuals | 50 |
| West Coast Depature | |
| Number of Individuals | 49 |

UNITED STATES
DEPARTMENT OF THE INTERIOR
WAR RELOCATION AUTHORITY
INDEFINITE LEAVES
May 13-19, 1945

| | |
|--|-----|
| Total Indefinite Leaves | 169 |
| Indefinite Leaves Completing the Family relocation | |
| Families | 24 |
| Number of Individuals | 62 |
| Complete Family relocation | |
| Families | 21 |
| Number of Individuals | 62 |
| West Coast Departure | |
| Number of Individuals | 17 |



UNITED STATES
DEPARTMENT OF THE INTERIOR
WAR RELOCATION AUTHORITY

778 may

INDEFINITE LEAVES
May 2-26, 1945

| | |
|--|-----|
| Total Indefinite Leaves | 193 |
| Indefinite Leaves Completing the Family relocation | |
| Families | 31 |
| Number of Individuals | 79 |
| Complete Family relocation | |
| Families | 22 |
| Number of Individuals | 57 |
| West Coast Depature | |
| Number of Individuals | 53 |

5496
5-21-45



UNITED STATES
DEPARTMENT OF THE INTERIOR
WAR RELOCATION AUTHORITY

INDEFINITE LEAVES
May 27-June 2, 1945

| | |
|--|-----|
| Total Indefinite Leaves | 177 |
| Indefinite Leaves Completing the Family relocation | |
| Families | 37 |
| Number of Individuals | 112 |
| Complete Family relocation | |
| Families | 13 |
| Number of Individuals | 27 |
| West Coast Departure | |
| Number of Individuals | 34 |



UNITED STATES
DEPARTMENT OF THE INTERIOR
WAR RELOCATION AUTHORITY

INDEFINITE LEAVES
June 3-9, 1945

| | |
|--|-----|
| Total Indefinite Leaves | 193 |
| Indefinite Leaves Completing the Family relocation | |
| Families | 40 |
| Number of Individuals | 98 |
| Complete Family relocation | |
| Families | 26 |
| Number of Individuals | 40 |
| West Coast Depature | |
| Number of Individuals | 52 |



UNITED STATES
DEPARTMENT OF THE INTERIOR
WAR RELOCATION AUTHORITY

INDEFINITE LEAVES
June 10-16, 1945

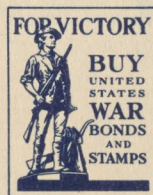
| | |
|--|-----|
| Total Indefinite Leaves | 145 |
| Indefinite Leaves Completing the Family relocation | |
| Families | 31 |
| Number of Individuals | 75 |
| Complete Family relocation | |
| Families | 19 |
| Number of Individuals | 43 |
| West Coast Depature | |
| Number of Individuals | 32 |



WAR RELOCATION AUTHORITY

INDEFINITE LEAVES June 17-23, 1945

| | |
|--|-----|
| Total Indefinite Leaves | 142 |
| Indefinite Leaves Completing the Family relocation | |
| Families | 25 |
| Number of Individuals | 55 |
| Complete Family relocation | |
| Families | 17 |
| Number of Individuals | 45 |
| West Coast Departured | |
| Number of Individuals | 51 |



UNITED STATES
DEPARTMENT OF THE INTERIOR
WAR RELOCATION AUTHORITY

INDEFINITE LEAVES
June 24-30, 1945

| | |
|--|-----|
| Total Indefinite Leaves | 138 |
| Indefinite Leaves Completing the Family relocation | |
| Families | 24 |
| Number of Individuals | 62 |
| Complete Family relocation | |
| Families | 15 |
| Number of Individuals | 45 |
| West Coast Departure | |
| Number of Individuals | 61 |



UNITED STATES
DEPARTMENT OF THE INTERIOR
WAR RELOCATION AUTHORITY

INDEFINITE LEAVES
July 1-7, 1945

| | |
|--|----|
| Total Indefinite Leaves | 66 |
| Indefinite Leaves Completing the Family relocation | |
| Families | 9 |
| Number of Individuals | 28 |
| Complete Family relocation | |
| Families | 6 |
| Number of Individuals | 9 |
| West Coast Depature | |
| Number of Individuals | 20 |



UNITED STATES
DEPARTMENT OF THE INTERIOR
WAR RELOCATION AUTHORITY

INDEFINITE LEAVES
July 8-14, 1945

| | |
|--|-----|
| Total Indefinite Leaves | 144 |
| Indefinite Leaves Completing the family relocation | |
| Families | 32 |
| Number of Individuals | 72 |
| Complete family relocation | |
| Families | 17 |
| Number of Individuals | 31 |
| West Coast Departure | |
| Number of Individuals | 57 |



*12 copies in Montebello
incl. Bond. groups.
F. J. J. J.*

UNITED STATES
DEPARTMENT OF THE INTERIOR
WAR RELOCATION AUTHORITY

INDEFINITE LEAVES
July 15-21, 1945

| | |
|--|-----|
| Total Indefinite Leaves | 178 |
| Indefinite Leaves Completing the family relocation | |
| Families | 43 |
| Number of Individuals | 116 |
| Complete family relocation | |
| Families | 16 |
| Number of Individuals | 25 |
| West Coast Depature | |
| Number of Individuals | 68 |



UNITED STATES
DEPARTMENT OF THE INTERIOR
WAR RELOCATION AUTHORITY

INDEFINITE LEAVES
July 22-28, 1945

| | |
|--|-----|
| Total Indefinite Leaves | 128 |
| Indefinite Leaves Completing the family relocation | |
| Families | 28 |
| Number of Individuals | 65 |
| Complete family relocation | |
| Families | 16 |
| Number of Individuals | 41 |
| West Coast Departure | |
| Number of Individuals | 37 |



UNITED STATES
DEPARTMENT OF THE INTERIOR
WAR RELOCATION AUTHORITY

INDEFINITE LEAVES
July 29-Aug. 4, 1945

| | |
|--|-----|
| Total Indefinite Leaves | 116 |
| Indefinite Leaves Completing the family relocation | |
| Families | 35 |
| Number of Individuals | 84 |
| Complete family relocation | |
| Families | 11 |
| Number of Individuals | 18 |
| West Coast Depature | |
| Number of Individuals | 74 |



UNITED STATES
DEPARTMENT OF THE INTERIOR
WAR RELOCATION AUTHORITY

INDEFINITE LEAVES
Aug. 5-11, 1945

| | |
|--|-----|
| Total Indefinite Leaves | 147 |
| Indefinite Leaves Completing the family relocation | |
| Families | 32 |
| Number of Individuals | 83 |
| Complete family relocation | |
| Families | 16 |
| Number of Individuals | 29 |
| West Coast Depature | |
| Number of Individuals | 69 |

