

L 2.16

67/14
C

Granada PIONEER

Vol. I, No. 66

Amache, Colorado

May 19, 1943

OPA PRICE CEILING EXPLANATION MADE

According to Russel T. Robinson, chief of the San Francisco Evacuee Property office, the OPA price ceiling of 55 per cent of the new price is for farm machinery and trucks only at present; but price control probably will be extended to automobiles in a short time.

APPRENTICE TRAINING OPEN

Opportunities for apprenticeship training in a completely equipped auto repair shop and in a carpentry shop have been opened for 10 men or 10 out-of-school boys, according to the adult education office.

Applicants for the machine shop apprenticeship will be taught auto mechanics, and the carpentry trainees will receive instruction in the use of hand and power tools.

Interested persons are asked to apply at the adult education office for further information.

VOLUNTEERS TO GET NOTICE SOON

All Amache volunteers who have not yet received notices to report for induction should be notified within the next two weeks, according to a wire from WRA Director Dillon S. Myer to Project Director James G. Lindley.

FEDERATION

Women To Meet

Dr. Enoch Dumas, elementary school principal, will speak at the meeting tomorrow at 10 a.m. of the Women's federation council at Hospitality House. Mothers of volunteers and soldiers in the US Army are especially urged to attend, as the group plans a Blue Star Mothers' organization.

HATS OFF TO...

A polite bow and a bouquet of our finest orchids to the Lamar Post, Veterans of Foreign Wars.

Every time a contingent of Amache volunteers leaves for induction into the US Army from Lamar (usually in the wee sma' hours of the a.m.), a group of VFW representatives gathers at the station to bid them well and wave them off. But that isn't all...they distribute cigarettes and VFW membership cards to the boys as well.

And so we say "Thank you!"

YWCA GIRLS

ATTEND SUMMER CAMP

All Girl Reserves and Y's Circle girls under 18 who wish to attend a cooperative summer harvest camp at Vineyard, Colo., from June 10 to 24 are asked to sign up at Hospitality House by Saturday. Paul Terry, superintendent of education, and a committee of high school instructors will approve the scholastic records of the applicants, and the girls will leave before school closes.

The harvest camp will accommodate 50 girls, 25 of whom will be from Amache. The YWCA, the sponsoring

EQUIPMENT TO ARRIVE

W. B. Wroth, chief irrigation engineer, announces that approval has been received from Washington for the pumping of water for irrigation purposes in this center. However, said Wroth, the Washington check provided only for the use of second-hand equipment, which is expected to arrive within two weeks.

Two wells have already been completed, and a third will be dug soon. It will probably be some five or six weeks before the motor pumps can be put into operation, he said.

group, will make it an inter-racial camp for girls from Pueblo and the Arkansas river valley region.

Project Director James G. Lindley commented that he is "interested in this combination work project and summer camp under the YWCA sponsorship," and feels that "it is one of the best means to combat prejudice and also to mingle with outsiders. I hope that the girls will take advantage of this and that all parents will realize the opportunities to contact those on the outside."

COUNSELOR HERE

Sarah Brown has arrived to assume her duties as associate counselor in the public welfare department. She formerly instructed in social work at Washington State, Pullman, Wash.

BERRY LEAVES

A.E. Beery, who was located in the US Employment service office in Block 6G information office, has been transferred to Denver. Marvin V. Lawson of the Lamar employment office will succeed Beery.

CALENDAR

TODAY

7:00 p.m.--Movies, "Brigham Young, Frontiersman," 12G mess hall.

7:45 p.m.--Movies, 11F mess hall.

TOMORROW

7:00 p.m.--Movies, "Kitty Foyle," 12K mess hall.

7:45 p.m.--Movies, 11G mess hall.

FRIDAY

7:00 p.m.--Movies, 9K mess hall.

7:45 p.m.--Movies, 10H mess hall.

GRANADA PIONEER

Published Wednesdays and Saturdays by the WRA and distributed free to each apartment. Editorial office: PIONEER building, Amache, Colorado. Telephone: 63. Editor: Khan Komai.

It's Up To Us

The success or failure of the farm project rests with the residents of the center. At the present time approximately 150 workers are unstintingly putting in their time, efforts and abilities into the farm to insure an adequate supply of meat and vegetables for our mess tables.

These men are not working for the \$16 or \$19 that they receive--their compensation is in the satisfaction of a work well done, and in the knowledge that they are contributing to the general welfare of the community.

The farm has not operated to its fullest capacities because of the lack of necessary manpower. That any able-bodied person would be unemployed is a reflection not only on that person alone, but on all the residents in the center. It is our acceptance of these parasites to the community that accounts for their existence. Parasites are generally ruthlessly eliminated--why not the human kind? They can be eliminated too--by public opinion.

It is our farm, yours and mine. What are you going to do about it?

JOB OPPORTUNITIES

Swimming instructor for YMCA, Columbus, Ohio.

Five girls to pack candy, wrap bars, paid on piece work with 42½ cts guaranteed, can earn up to \$5 day, Chicago.

Stenographer, attorney's office, \$25.

Economist to write legal briefs, \$30 wk up, econ major required, Chicago.

Beauty operator, salary and commission, approx \$40 wk, Chicago.

Junior accountant, salary based on ability, required 1 hr exp in public accounting office or 2 yrs on general ledger of manufacturing concern, college education, Rockford.

Two watch repairmen, salary and commission, average \$50 wk, Omaha.

Girls for food control dept, \$90 mo plus 2 meals, 48-hr wk, no room, hotel, Chicago.

Lab technician, \$100, Chicago.

Farm tractor driver, \$5 day, near center.

Nursemaid, \$75 plus bd and rm, Virginia.

Farm, livestock work at Cozad, Neb., \$75 mo plus bd, rm, double time if you work on Sunday, \$10 per mo bonus at end of 6 mos.

Any mechanics wishing employment in Boston or New

York City, apply at employment office.

Man to take auto motors apart, Chicago, \$32.50, 54-hr wk, exp necessary.

Exp man to operate acetylene cutting torch for wrecking old cars, Chicago, \$33, 54-hr wk.

Four hospital kitchen maids, Chicago, \$70 mo plus meals.

Four cleaning women, Chicago, \$70 mo plus meals.

Truck drivers, aged 22-35, Detroit, \$35 to \$45, 40-hr wk, time and half overtime, temporary housing available.

Exp poultry dresser, \$1 hr; inexp poultry dressers, 70 cts hr to start, 40-hr wk, time and half overtime, Detroit.

Men to process, scale, dress fish: exp men \$45 wk, time and fourth overtime, 54-hr wk; inexp men, \$35 wk, time and fourth overtime, 54-hr wk, Detroit.

Man and wife or 2 men for maintenance work in Detroit resident school, \$100 mo, plus meals, or \$70 mo with full maintenance.

Head cook and asst cook, \$90 and \$70 mo plus maintenance, same school as foregoing.

Two girls for playground duty, cleaning, etc, at Detroit children's school,

Short TAKES

Project Director James G. Lindley will leave this week end for Washington where he will attend a meeting of all project directors.

Thomas Holland of the Washington WRA employment office was a visitor to the center last week.

Nurses' aides at the center hospital recently received their uniforms, which consist of a blue and white striped pinafore worn over a white blouse.

A surprise party was held for Jaine Oi at the Hospitality House Monday evening. She left yesterday for Washington where she has accepted employment.

Amache Boy Scouts are now salvaging tin cans from the center dump. Prior to April 1, cans were piled on the dump and these are the ones that the Scouts are collecting. The job is expected to be completed before warm weather comes.

GRANADA STORE SELLS FISH HERE

Fish will be sold in Amache by the Granada Fish market from 8 a.m. to 12 noon, according to the following schedule:

Tuesdays, in 8K; Wednesdays, in 11F; Thursdays, at the canteen; Fridays, in 11H; Saturdays, at the canteen.

Consumer Enterprises began this service yesterday.

WIT/AL STATISTICS

BIRTHS:

To Mr. and Mrs. Ichiji Imada, 8F-4B, a boy, May 7.

To Mr. and Mrs. Harry Otani, 11F-12E-F, a girl, May 13.

To Mr. and Mrs. Harry Naka, 6H-6F, a boy, May 15.

\$22 wk plus bd and room.

Man or woman with exp to conduct craft and athletic program for children's school, \$700 to \$900 per school yr plus maintenance, Detroit.

COUNTY TOLD ARMY NISEI WON'T JEOPARDIZE COAST

LOS ANGELES, May 12-- Los Angeles county was assured that the War department in enrolling American-born Japanese in the Army will not "concur in any action what would jeopardize the West coast."

Said Col. William P. Scobey of the War department in a letter to the LA supervisors:

"The War department does not contemplate incorporating 28,000 Japanese in the Army. We intend to incorporate 9000 American citizens of Japanese ancestry into a combat team."

"The mass evacuation of Japanese did not imply disloyalty on the part of all Japanese and it does not

appear either right or in accordance with the American conception of democracy to retain these loyal ones in restricted custody....

"The War department does not concur in any action that would jeopardize the security of the West coast, or any other coast, or the safety of its military expeditions."

NISEI MOVE INTO ESSENTIAL JOBS

WASHINGTON, May 11--After nearly a year behind barbed wire, thousands of American citizens of Japanese ancestry are being systematically moved into essential jobs, the OWI reported, some even into war production industries.

The relocation center, built to house 110,000 Japanese moved from the Pacific coast states, is regarded as temporary way stations, OWI said, for the majority of the evacuees. More than two-thirds of them are American citizens by birth.

"Re-establishment in private employment in normal communities is the ultimate objective of the WRA," the report said.

Six Point Program Outlined By Costello

WASHINGTON, May 12--A definite proposal was advanced that hostile or suspicious Japanese and Japanese-Americans now in relocation centers be exchanged for American citizens in Japanese custody.

Representative Costello of Hollywood outlined a six-point program which will be submitted to California, Washington, and

WISITING

SOLDIERS

Sgt. Sam S. Hara, Ft. Snelling, Minn.; Pfc. George Matsumoto, Camp Walters, Tex.; Pfc. Hiroshi Mitobe, Camp Crowder, Mo.; Pvt. Ken C. Miyamoto, Camp Hale, Colo.; Pvt. Minoru Fujita, Camp Shelby, Miss.; Frank S. Okada, Kay Obayashi, and Fred Fujii, (ranks unknown), Camp Hale, Colo.

War Is Funny -- At Times

TUNIS, May 11--The German Africa corps takes this business of war so seriously that when they do make a ridiculous move, it's doubly funny.

Before a large number of Nazi soldiers surrendered to the British recently, they busily promoted themselves from the German equivalent of a buck private to officers. Promotions were handed out right and left. The purpose was to insure better treatment and rates of pay for those promoted.

DIES COMMITTEE TO INVESTIGATE CAMP

WASHINGTON, May 12--Representative Barrett (R-Wyo.) said that the Dies committee has agreed to investigate conditions at the Japanese resettlement camp in Wyoming.

Barrett proposed that the committee determine what steps have been taken to segregate the loyal and disloyal, whether passes out of the center are held to a minimum, whether those who desire employment outside are given proper encouragement and afforded ample security.

Evacuees Go East To Settle

LOS ANGELES, May 12--To those Californians worrying about the return of Japanese after the war, a relocation camp official makes this reply: "Thousands don't want to come back."

"The young Japanese Americans look at the situation realistically," says Charles F. Ernst, director of the Topaz relocation center. "Most of them want to go east and settle."

"Getting them out of their old ruts will make American citizens of them. I think America needs them, but I think they should be sent somewhere other than California."

"Our aim with these people (evacuees) is to give them a temporary substitute as much like their homes as possible, to train them for jobs in which they can be useful, and to get them out over the United States on those jobs."

"America needs these Americans," said Ernst. "Among them are highly educated and trained men and women and others of all shades of usefulness. Let us get them out over the United States as rapidly as possible in order that they may really pull the weight that they are so eager to pull."

Oregon members of Congress.

Features of the plan are:

The revocation of Army orders permitting Japanese-American soldiers to re-enter the Western Defense command, to bar women of Japanese ancestry from admittance into the WAACs, WAVES, SPARS, etc.

Immediate segregation and confinement of "all known subversive" Japanese, both alien and citizen.

Japanese who are "reasonably believed to be loyal" should be utilized in agriculture and industry outside restricted areas....

All other evacuees should be kept in relocation camps until the war is over.

The exchange of subversive and disloyal evacuees for American prisoners of war held by the Japanese government.

Y'S Way

The Valaines are proudly wearing their club pins which Masaji Murai helped them to make.

-Y-

Adviser Mirry Miyake and Vice President Mary Wada were honored by the Victorettes at a farewell party recently. Both girls have accepted outside employment.

-Y-

Colleens will do art work on curtains for the children's room of the hospital tonight at 7 o'clock at Mrs. Campbell's home. The original designs were made by Jack Ito.

-Y-

Two new GR clubs will join the Blue Triangles soon. One is a junior high group of 7th and 8th graders and the other is composed of senior high girls. New groups are always welcome in the Y, and the GR secretary is at your service.

-Y-

Misao Murotani was selected vice president of the Silverines Friday. The group made plans for a picnic to Lamar May 29.

-Y-

Visiting soldiers' calendars for this week were made by Taxie Kusunoki, Violet Kumimoto, Virginia Takemura, and Tsugime Akaki of the Colleens.

-Y-

A new adviser and plans for future activities were discussed by the Tri-Delts Monday afternoon.

-Y--

With everything "country style", the Valaines were hostesses to the B and I girls Sunday evening at a barnyard social at Hospitality House. Folk and social dancing and refreshments were enjoyed by all.

-Y-

A surprise shower for Enola Kjelgaard and Mae Uno was held by the Twenteens Sunday afternoon at Hospitality House. A towel set and a handkerchief embroidered with the members' names were presented to each honoree. Letters were written to former members, Ensign Inez Neill, Grace Hanaki, and Harriette Arao.

DAY AFTER DAY

KIDON SHIGAKI



ZEMPACHI: YOU CAN'T QUIT NOW
I THINK I CAN SEE THE OTHER
END OF THIS ROW!

ACADEMY AWARD WINNER SLATED

"Brigham Young, Frontiersman," co-starring Tyrone Power and Linda Darnell, will have its last showing tonight. Starting a four-day run from tomorrow night is "Kitty Foyle." Filmed from the novel by Christopher Morley, it tells the story of a "white-collar" girl who falls in love with a wealthy society man. The cast includes Ginger Rogers (who won the Academy Award for this picture), Dennis Morgan, and James Craig.

BUSSEI FORUM TO BE HELD

A young people's forum will be conducted by Rev. Takayu Shirakawa at the 7G Buddhist hall, Friday at 7 p.m.

WITAIL

STATISTICS

DEATH:

Fumio Masaoka, 23, 11F-8A, died May 18, at center hospital.

BUSSEI ROUNDUP YBA SOCIAL SCHEDULED

"Bussei Roundup," sponsored by the YBA, will be held Saturday at Terry hall from 7:30 to 10:30 p.m. This social is in honor of St. Shinran. Admission will be by bids only. Besides members, guests are also invited. A short service will open the evening.

Richard Iseri is general chairman; Kikuyo Masada, Elsie Noyoshi, and Ed Inaga, social; Kimi Nomura and Mitsuko Furukawa, refreshments; Kikuyo Masada, invitations; John Kimura, decorations; Kay Matsuhiro, permit.

Patrons and patronesses will be Messrs and Madames Harry Ogata, Noboru Masada, and Ed Yoshimoto.

MEMBERSHIP CARDS AVAILABLE NOW

Bussei are asked to get membership cards from Elsie Noyoshi, 6H-1A, or Kazuo Kiyono, 11E-9F.



PIONEER



May 19, 1943

Page 5

LEADERS' JINX

Featuring "upsets" as the main attraction, the horseshoe pacemakers met their jinx last week end. Saturday afternoon, the A league Cardinals swamped the tough Echoes, 12-6, to dump them from the lead, and the highly touted Starlettes were over-run by the Hayseeds, 18-4, in the femme league. Climaxing the week end of softball was the downfall of the mighty Wahoos, AA leaders. The wipless--until then--Dusters turned the trick, 12-6, Sunday afternoon.

KID TOPPER

Among femme softballers, Loretta "Babe" Kochi, hustling buck-short on the Topper team, is hailed as one of the youngest top players. An all-around athlete, Babe, a product of San Pedro, is a veteran of 13 years.

DRESS PARADE

The Dusters are down in the books as the first club this season to display a flashy, uniformed outfit. Clad in red and blue jerseys with white numerals, they proved to be the Sunday surprise-package, both in appearance and in play.

CHATTER

Yuk Yawata, former high school PE instructor, is slated to return to the coaching staff. Hampered by a leg injury he was "out of circulation" for awhile. He will replace Coach Kei Kuzuhara, who is leaving for Cincinnati.

SPORTS CIRCLE

AA SOFTBALL results
Dodger def Deltans, 6-4
Dusters def Wahoos, 21-10

A SOFTBALL results
Skibos def Granders, 4-3
Cards def Echoes, 12-6
Knines def Condors, 20-2
Raiders def Hot Shots, 13-11

GIRLS' SOFTBALL results
9K def Twenteens, 11-6
Hayseeds def Starlettes, 18-4
Toppers def Blue Swans, 4-1
Toppers def 9K, 48-0

SOFTBALL GAMES

9H vs 11E--Thursday
9K vs Ramblerettes--Friday
11F vs Blue Swans--Friday

DUSTERS UPSET WAHOOS 6-4; DODGERS MASSACRE DELTANS

Upsetting the whooping Wahoos' 6-4, the youthful Dusters won their first AA league game Sunday afternoon at the 9K diamond.

In the first inning, the Dusters scored one when Wahoo catcher Tak Furuya over-threw second sending in John Niizawa. The Wahoos' came back when Sue Fukuyama slammed a round-tripper along the left field sidelines.

An error followed by walks produced three runs in the third, and two more tallies were chalked up in the fourth on three hits to send the Dusters ahead 6-1. The Wahoos' rally fell short after pulling within two runs of the Dusters.

Chick Kunisaki, in rare form, scattered six hits for the winner, while Shig Fukuyama also allowed six hits for the losers.

Piling up a 10-0 lead in the initial inning on five hits and five walks, the peppery Dodgers massacred the Deltans 21-10 in the second AA game at 9K.

After chasing Deltan Yas Hara from the hill, the Dodgers' scoring barrage continued in every inning except in the fourth. During their stanza, the Deltans came to life to mass four hits, two errors and three walks for seven runs.

Romeo Kitagawa turned in a seven hit performance, for the Dodgers while Deltans Yas Hara and Mas Okuda issued a total of 10 hits.

LETTERMEN PLAN DANCE FOR JUNE

Head Coach John C. Hoke stated that the basketball certificates for letter winners will soon be awarded. Letters have not yet been received but they will also be given.

The Lettermen will hold a dance this coming June 11. For this dance, Hoke promised that the hottest band will feature the event.

TOPPERS COP TWIN BILL

Sweeping both ends of a doubleheader, the Toppers toppled the Blue Swans 4-1 in the opening girls' game at 10F Saturday afternoon. Tuffy Inouye checked the Swans to four hits while her teammates gathered seven hits off Swan Johnnie Matsuda.

Massing 48 runs in two innings, the Toppers bumped the 9K girls 48-0 in the second game. The game was called off after the second inning because of the uneven match.

In the upset of the girls' league, the Hayseeds defeated the highly touted Starlettes 18-4 at 10F. Misayo Sugioka held the Starlettes to five hits.

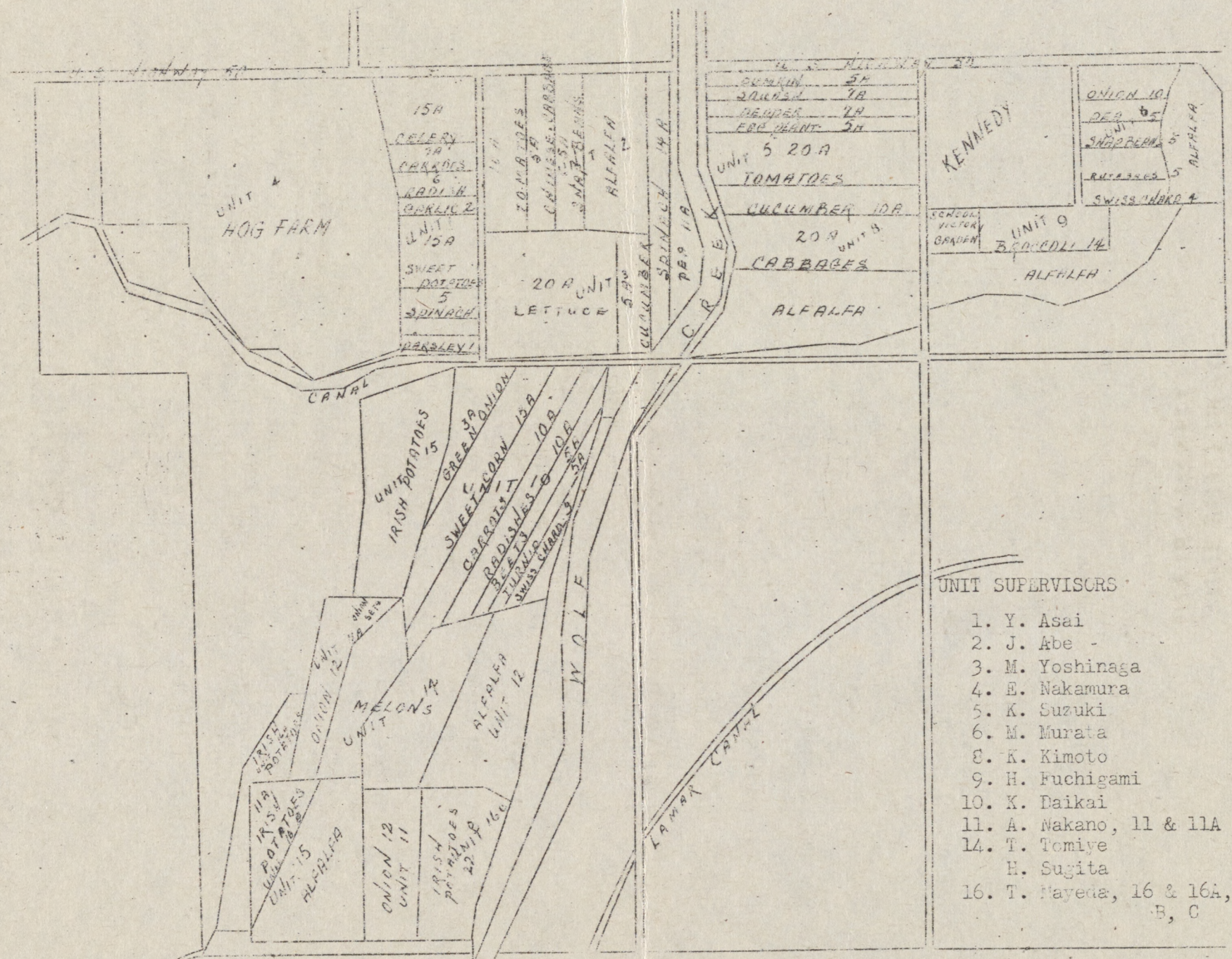
CARDS, KNINES WIN IN TOP A GAMES

Allowing only three hits, the Cards behind flinger Taira Matsushita set the Echoes down 12-6 in the first A game at the 9K diamond. Tak Kunimoto hurled 12 hit ball for the losers.

Eking out a 4-3 victory over the lowly Granders, the Skibos moved in a three-way tie for second place. Skibo George Takahashi allowed three bingos while Kawasaki pitched a five-hit game for the Granders.

At the 10F field, the Raiders came from behind to upset the Hot Shots 13-11 in the first contest Saturday. Makoto Sakaguchi twirled 13-hit ball to Hot Shot Kenji Yamaga's 12-hit game.

In the second game, the high-riding Knines trounced the Condors 20-2 to hold the A league lead. Knine ace Yukio Miyamoto turned in a five-hit performance while Condor Tak Sugimoto was pounded for 16 hits.



FARM FRONT

EXPLANATION GIVEN ON AGRICULTURE PROGRAM

The center farm has vegetable, poultry, and livestock (hog and beef cattle) projects in operation now. Residents have been enjoying the pork and the eggs produced on the farm. Spinach and chicken from the farm will be on the mess tables this month.

The operation of the farm is divided into units, with the choice of crop and the general responsibility for these separate units vested in a unit acreage supervisor. Henry M. Inouye is the general supervisor.

Table of supervisors:

- Unit 1 Yoshio Asai (9E)
- Unit 2 Jitsumi Abe (7E)
- Unit 3 Meikichi Yoshinaga (7H)
- Unit 4 Ena Nakamura (8F)
- Unit 5 Katsumi Suzuki (12E)
- Unit 6 Masajuro Murata (11E)
- Unit 8 Kusutaro Kimoto (12E)
- Unit 9 Heito Fuchigami (7G)
- Unit 10 Kiichiro Daikai (7E)
- Unit 11 Asataro Nakano (6H)
- Unit 14 Toyojiro Tomiye (11E)
- Unit 16 Takeshi Mayeda (6H)

At present, in addition to the units, there is the 8F hotbed under Hatsuji Sugita and Heita Fuchigami, the Loen headquarters hotbed under Asataro Nakano, and the 12E hotbed under the supervision of Masuichi Nakano. The 8F hotbed is in tomato, eggplant, pepper, broccoli, chiso, and shingiku plants, while the 12E hotbeds contain tomatoes, cabbages, eggplants, and peppers. These hotbed plants will soon be transferred to the farm.

The vocational agriculture class has 500 acres, of which 20 has been planted in Irish potatoes. The greater acreage will be devoted to grain crops. Tomato plants for the six acres that the class has planted were shipped here from Gila River relocation center.

In addition to the vegetables, 1,600 acres of field crops will be planted to provide feed for the

livestock and poultry projects. George S. Miyake is in charge of the field crops and 50 head of beef cattle. They will soon be ready to mow 500 acres of alfalfa. Plans have been made to increase the beef cattle herd to 1000 head as soon as conditions permit.

By July 1 the hog project, under the supervision of Ena Nakamura, will have 1000 head. They will utilize much of the garbage from the center for feed. A supplementary acreage in feed crops will be grown.

The poultry project, supervised by Henry Shimizu, will have, in addition to the 6000 baby chicks and 300 hens now being cared for, an increase of 8000 more baby chicks by June 15.

GILA FARM PROJECTS YIELD MUCH PRODUCE

GILA, Ariz.--Strawberries planted when the evacuees first entered the Gila center yielded 632 pounds of berries as of April 30,

US PRODUCES 25% SUGAR CONSUMED

Approximately 1,800,000 short tons of this nation's sugar supply for 1943 will come from the sugar beets produced on US farms. This figure represents 25 per cent of the sugar consumed by Americans annually.

Beet sugar supplemented or entirely replaced imported cane sugar in 35 states.

At no time in the history of the beet sugar industry in this nation has it assumed the importance it has during World War II when it has been called upon for a substantial volume of the sugar used in America.

TRANSIFIERS

Paul, Mitsuye, and Barbara Yamamoto, to Poston.

SCRAP METAL SOLD TO HIGHEST BIDDER

Approximately 100 tons of scrap metal, consisting of worn-out tools and equipment and salvaged metal, have been sold by bid to the Speken Wrecking company of Pueblo, the farm office said.

The price bid was \$7.10 per ton, the highest permitted under OPA regulations. The company is now removing the scrap from the Koen ranch.

INSPECTION TOUR OF FARMS MADE

Block managers and members of the agricultural committee last week made an inspection tour through the project farms. Explanations of various phases of the farm were given by Henry Inouye, general farm supervisor, and Charles Machida, farm section representative.

according to the Gila News-Courier.

Other recent plantings on the farms include 25 acres of cucumbers, 22 acres of peanuts, and 26 acres of mungo beans to be used in chow mein.

Among the war crops planted on the center's 140-acre farm are cotton, flax, and castor beans. Thrashing will begin on the 66 acres of flax this month.

Watermelons and honeydews are expected to make their appearance on the mess tables soon. First picking of string beans has just begun. The experimental planting of celery was not very successful as plants were set out too late in the season. However, close to 10,000 pounds have been delivered to the mess halls.

Since the November harvest, 75 carloads of fresh vegetables have been shipped to other relocation centers. An average of three to five carloads a week are being sent out.

VEGETABLE ACREAGES ON FARM ARE LISTED

Although handicapped by the lack of workers, insecticide, cultivators, and proper irrigation facilities, more than 200 of the proposed 537 acres of vegetables have been planted at the center farm during the past month. This acreage includes that planted by elementary and high school students, who recently started work on Victory gardens.

The following table shows of the distribution of acreage and variety of vegetables to be planted. The asterisk (*) indicates vegetables that have been planted, some partially.

Unit	Total Acreage To Be Planted	Distribution Of Acreage	Variety of Vegetables
#1	48.5	2	Garlic *
		15	Celery
		7	Carrots
		5	Radishes
		15	Sweet potatoes
		5	Spinach
#2	86.5	1	Parsley
		11	Peas *
		14	Spinach *
		1 $\frac{1}{2}$	Chongii *
		20	Lettuce *
		5	Cucumbers *
#3	16.4	5	Snapbeans *
		10	Tomatoes
		5	Chinese cabbage
		15	Daikon
			Field corn
			Pumpkin and squash
#4	71.3	15	
		5	Pepper
		5	Eggplant
		20	Tomatoes *
		10	Cucumbers
		20	Cabbage
#5	26.9	10	Onions *
		5	Peas
		5	Snapbeans *
		6	Rutabagas
		2	Swiss chard *
#6	18	2 $\frac{1}{2}$	School garden *
		10	Broccoli *
		10	Swiss chard *
		1	Parsley *
		15	Spinach *
#7	61.5	10	Beets *
		5	Turnips *
		15	Sweet corn
		10	Radishes, daikon
		10	Carrots *
		2	Green onions
#8	24.75	22	Onions *
		2	Onioneets
		14	Celery *
#16G-16C	61.5	57	Potatoes *

Units 12, 13 and 15 are alfalfa fields. may be soon solved with the construction of a kitchen

The problem of feeding at the Koen ranch. Feeding the farm workers at noon of workers at the ranch

850 MEXICANS ARRIVE TO WORK IN BEET FIELDS

DENVER, MAY 12--Eight hundred fifty Mexican workers--to be followed soon by 2,500 more--arrived in Denver for assignment to jobs in sugar beet fields of Colorado, Wyoming, Nebraska, and South Dakota. They are under the jurisdiction of the farm security administration.

Recruited from rural areas of the republic, the Mexicans will be paid prevailing wages in the communities to which they are assigned, guaranteed reasonable living conditions, and will be given American ration books.

War Prisoners May Be Used

WASHINGTON, May 12--Officials are still considering plans whereby some 20,000 war prisoners in this country might be used to work on farms and possibly in road construction jobs. They declared that any use of enemy soldiers must conform to the Geneva convention terms, which permit farm work, but forbid use of prisoners in work aiding the war effort against their countries.

Problems facing officials include the guarding of prisoners assigned to farms and the reaction of the people in localities where the prisoners might be used.

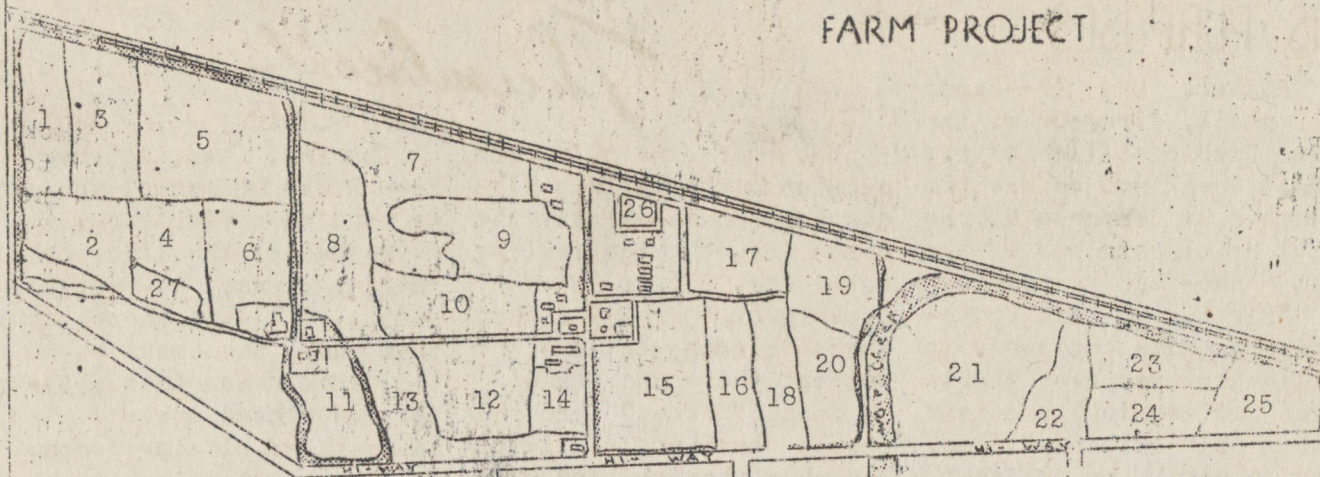
Prisoners would, under present plans, be paid 80 cents a day plus 10 cents daily for the purchase of small luxuries. Only prisoners of enlisted grades would be utilized. Officers, who may not be required to work outside the prison camps, are paid \$20, \$30 or \$40 a month, depending on their rank, in addition to their keep.

WANTED

100 men or women for general farm work immediately. Please report to agriculture division.

will serve to conserve gas and rubber, it is pointed out.

AMACHE SENIOR HIGH SCHOOL FARM PROJECT



Courtesy of Sueo Kimura

Unit	Acres	Crop	Unit	Acres	Crop	Unit	Acres	Crop
1	6.5	Barley	10	18.4	Field corn	19	29.6	Barley
2	18.6	Alfalfa	11	15.6	Sweet corn	20	13.4	Alfalfa
3	27.2	Alfalfa	12	27.7	Alfalfa	21	44.2	Maize
4	15.3	Tomatoes	13	24.7	Alfalfa	22	6.0	Maize
5	47.3	Field corn	14	13.2	Field corn	23	18.2	Maize
6	23.0	Field corn	15	35.5	Alfalfa	24	15.7	Alfalfa
7	26.5	Oats	16	15.0	Beans	25	8.6	Alfalfa
8	30.1	Alfalfa	17	22.0	Maize	26	1.5	Garden
9	19.7	Alfalfa	18	16.0	Maize	17	1.5	Watermelon

FEED CROP AND GRAIN PROGRAM UNDER WAY

Feed crops and grain are raised primarily to feed the livestock; namely, hogs, chickens, and beef cattle.

The planned acreage of feed crops and grain for 1943 follows:

alfalfa	675 acres
grain	175 acres
field corn	500 acres
sorghum(dwarf)	400 acres
sorghum(fodder)	200 acres
total acreage	1,950 acres

The vocational agriculture department of the Amache high school has taken over 500 acres to farm, of which 200 acres will be in feed crops. At present, 60 acres have been planted. This has helped alleviate the labor shortage.

The soil, of the sandy loam type, has good drainage, high crop yield, and a general sloping towards the river, north of the center. It is adapted to vegetables, feed crops, and grain. The average yield of the best soils are alfalfa, 3 to 4 tons per acre, and barley, 50 to 60 bushels per acre.

The irrigation water is obtained from the Lamar Canal and Irrigation company, with the main source at the Arkansas river.

The growing season is about 5 months, with mild temperature, large amount of sunshine, dry winds, and about 15 inches of rain annually (and plenty of dust).

At present, 440 acres of alfalfa are growing north and west of the center. Sixty acres of barley have been planted by the vocational ag students.

Lack of farm workers

FARM EQUIPMENT SHIPPED TO GILA

A caterpillar D-8 tractor and 16-yard Caterpillar unit, which was used in construction work, was shipped to the Gila River relocation center last week, according to the farm office.

and of equipment has necessitated licensing of more than 2,500 acres to outside farmers with the farm section's permission. Alfalfa, feed crops, and grain will be raised.

COMPREHENSIVE PLANS FOR POULTRY PROJECT SET

Despite the critical shortage of labor, the lack of range shelter, the absence of proper water facilities, the poultry program has made progress since its inception in September -- increase of egg production, increase in size of flock relatively small mortality rate -- and plans for its further improvement are being made.

Present plans call for about 20,000 mixed breeds of White Rock, New Hampshire, Red Plymouth Rock, and Rhode Island Reds. Included in this total are 10,000 laying hens. The

goal is gradually being reached as 500 new chicks are expected to arrive any day now and it is hoped to have 8000 extra chicks by June 15.

The chicks are housed in a three-room building and four-room house. Presently, there are 500 chicks with a brooder stove in the former, while 1000 chicks with two brooder stoves are in the latter. Sixteen brooder stoves have been installed and nine houses have been utilized to date. However, the program calls for additional

continued on page 8

FENNELL TELLS HIS PURPOSES

PUEBLO, May 12--James W. Fennell, director of the new Pueblo office of the WRA, speaking before the Chamber of Commerce at the Vail hotel, said his office has a two-fold purpose.

"First, we want to co-operate with employers in relieving manpower shortages in agriculture and other critical industries, and second, we desire to help residents of relocation centers in finding types of employment for which they are best fitted by training and experience to fill," he said.

Fennell serves as liaison agent for Southern Colorado employers and the 10 relocation centers.

MORE ON POULTRY FARM

continued from page 7--
brooder stoves as well as additional houses.

A big problem facing the poultry farmers is having different dated chicks in the same room. The older ones consume more feed, hence leaving the younger ones with less to eat. A great difference in the growth and vitality of the chicks is noted. This, however, is an unavoidable obstacle at present because of the lack of range shelters. A number of the chicks should have been let out two weeks ago. These range shelters provide space for the already grown chicks so that the new arrivals will have houses equipped with brooder stoves.

Water is another problem facing the poultrymen. Due to a priority ruling, the water is not piped and must be carried to the houses.

The dressing of the fliers presents another problem. At least 25 persons are needed to dress the estimated 3000 roosters for center consumption.

The poultry project needs workers to carry its problem through. The rapid draining of manpower through the WRA resettlement program has created this acute situation.

special farm edition

Thumbnail SKETCHES

Whenever Amache's farm section is the topic of discussion, one hears only the names of the top fellows mentioned. But, as in every department, there are always unsung heroes--fellows who get out there and work.

Such "heroes" are the Otsuka brothers of 11F-6C--George, Charles, and Jimmy. This hard-working trio is employed on the XY ranch. (George is no longer working, as he was recently inducted for the nisei combat unit.)

George is the oldest of the three. A quiet, serious-minded fellow, he always thinks before speaking. Prior to his induction in the army, he was the grain foreman in the beef cattle division.

George is a graduate of Santa Rosa high school, specializing in agriculture. In 1938, he exhibited his hogs in South San Francisco's livestock show, where he was awarded first prize for his breed of hogs. The following year, as a member of the high school farm mechanics team, he went to San Luis Obispo where his group was crowned state champ. At that time, George was given a medal as the high-point man.

In 1941, he went to Kansas City, Mo., where he competed in a milk-judging contest. That year, he spent three days at San Francisco's World Fair on Treasure Island, exhibiting hogs.

Then there is Charles, better known to his gang as "Chuck." (The girls call him Charlotte.) He is quite a character--serious when the occasion demands, and jolly and humorous at other times--altogether easy to get along with.

Charles, too, attended Santa Rosa high school where he studied agriculture. As a member of the livestock judging team, he went to Davis, Calif., where the team won, then went on to the finals at San Luis Obispo and placed second. As an award for placing second in the state finals, the school group went to Portland, Ore., to compete in a livestock show for the eight states west of the Rockies. In this competition, his team placed third.

In 1940, Charles studied for and made the poultry judging team which won the state title and went on to the National livestock show at Kansas City, Mo. Among the 36 competing state champs, his team placed second. In his senior year, Charles became a member of the farm mechanics team who were crowned state titlists.

At Treasure Island, he exhibited his hogs for a week. At that time, he was awarded the reserve championship pen, consisting of three hogs. Also, he placed second in showmanship--ability to exhibit before judges.

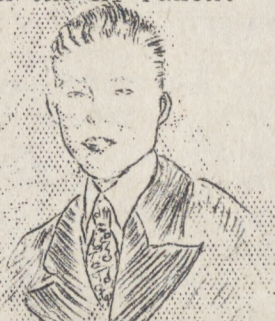
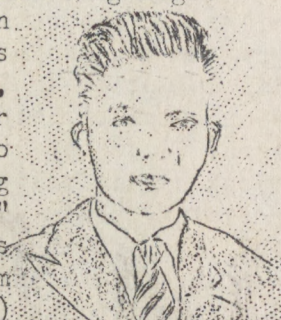
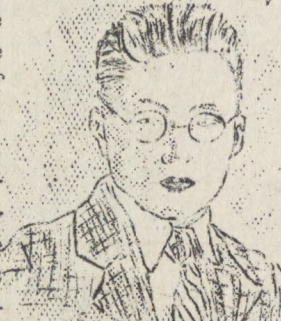
He was a reporter and secretary of the Future Farmers of America for the Santa Rosa Chapter. At present he is the beef cattle foreman on the XY ranch.

Last of the trio is Jimmy, the youngest. His pals call him, "Jimbo."

Since Jimmy is only a recent graduate of Santa Rosa high school, he hasn't the varied experience of his two older brothers. In high school, he was the secretary of the FFA. In 1941, he made the milk judging team which placed first in the state finals at San Luis Obispo.

On the XY ranch, Jim is the feed crop foreman. He loves sports--plays basketball, football, and baseball.

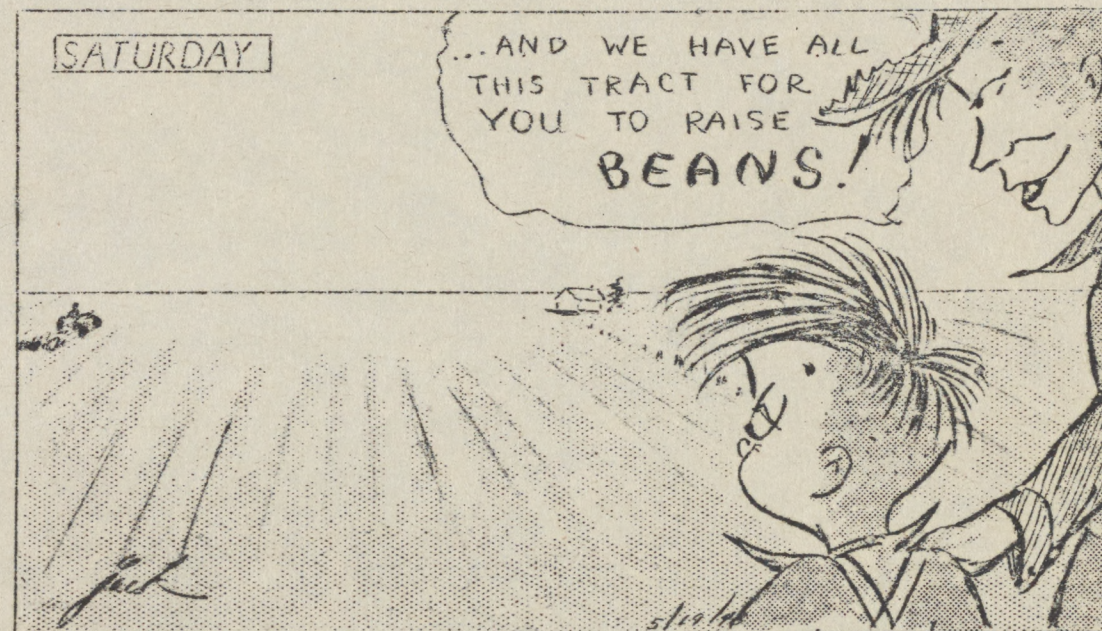
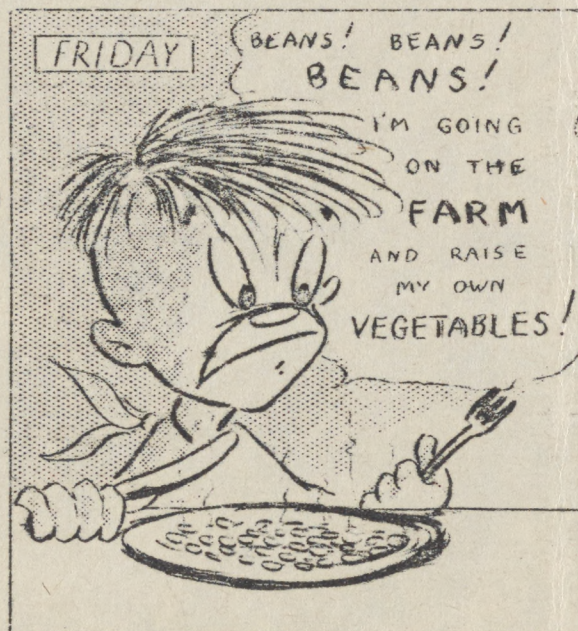
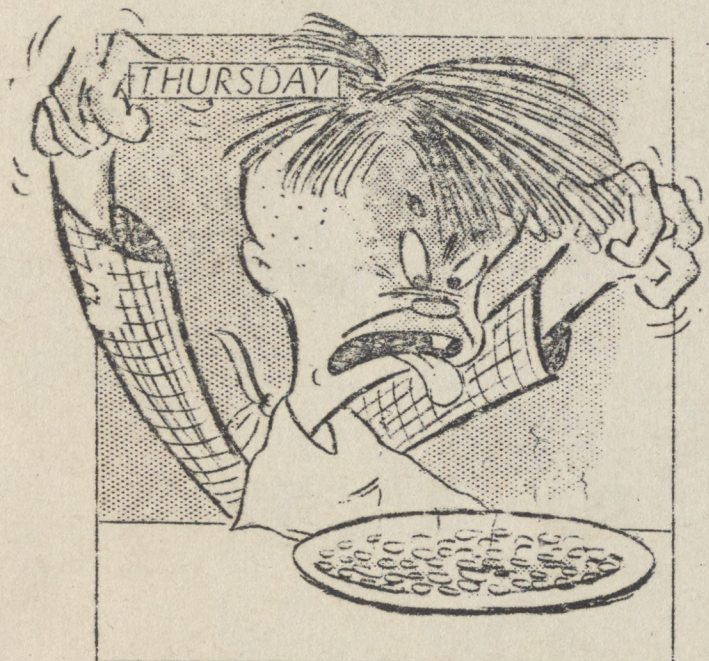
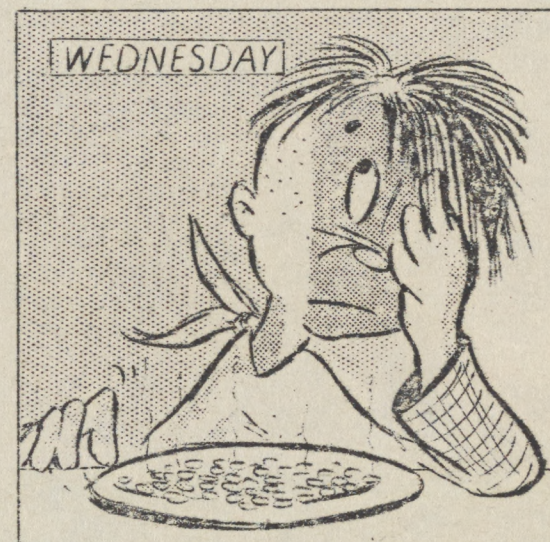
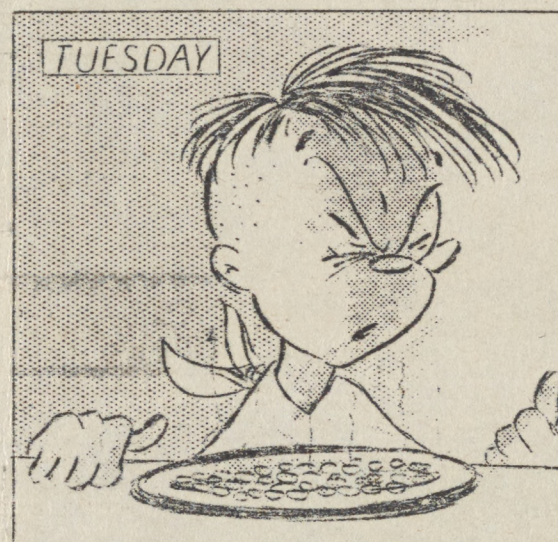
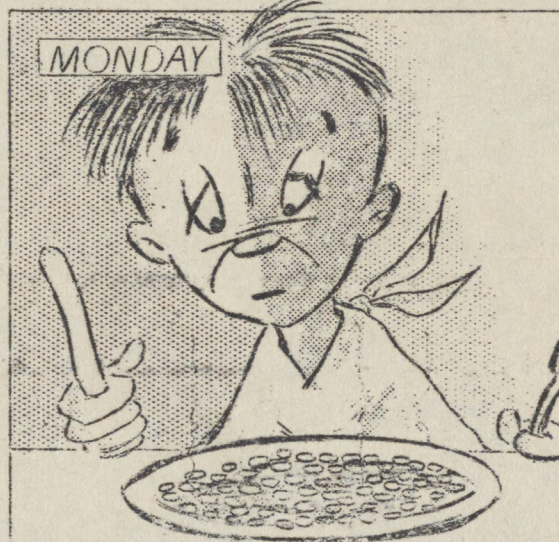
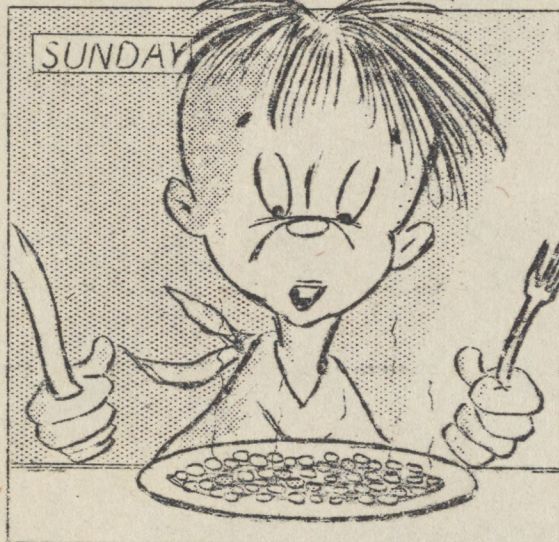
--Suyee Sako



LIL' NEEBO

(LITTLE NISEI BOY)

BY JACK ITO



墨国人労働者八百五十名
デンバー市に到着

先週水曜日の八百五十名の墨国人労働者は首府メキシコ市より特別列車便で到着しデンバー驛頭時ならぬ賑を呈した。之等の労働者はコロラド・ワイオミング・ネブラスカ、南ダコタの諸州内の砂糖大根農園に就働する一団である。

更に二十五百名の一団は本月末頃に着しコロラド・モンタナ・ミネソタ州内に就働することになつてゐる。右労働者の輸入は農業保安局の管轄の下に実施されたもので、之等の労働者は契約終了と共に墨国に歸還する事になつてゐる。この労働契約に依れば労働者は指定された地方に於る至當な給料を支拂はれ更に適當な生活上の設備と充分な食糧とを保證されてゐる。

六F 吹寄會

来る金曜日の午後七時半より六F食堂に於て吹寄會を催す由なるが出し物は全部新しい物ばかり盛澤山にある筈なれば多数の来會を希望してゐる。

婦人聯盟集會

来る木曜日の午前十時より婦人聯盟ではホスピタリティーハウスに於て幹部會を催すが席上デューマス校長の講演がある筈なれば特に多数の軍人の母の出席を希望してゐる。

特志寄附

日E區在住久保嘉作夫妻は先般結婚せる令嬢の結婚記念として同區婦人會に對し金五弗を寄附した。右寄附金は先般再選された檜木夫人之を受け、會員一同非常に感謝してゐると。

出生

ハリ大谷夫人 女子 五月十三日
ハリ仲夫人 男子 五月十五日

法事

元ウインタース在住山本甚三郎氏夫人の百ヶ日法事を来る二十一日(金曜)午後七時半よりオ一佛教會堂に於て勤修致さるゝ故有縁知己の方は參詣ありたしと。

トラック買い度し

十九百三十五年型以後のトラック(ハネル)トラック賣度し。高價を支拂ふ。加州に保管中の者で賣却希望者は本社谷脇氏に照會あり度し。又三十五ミリのキャンデット、キヤメラも買手あり。

生長の家集會

日旺 木旺 午後七時半
於 以G 娛樂室
五月廿日 木旺日 午後七時半
「光明の生活法」唐津卯之助
五月廿三日 日旺日 午後七時半
「世に勝つ原理」唐津卯之助

佛教會

當佛教會に於ては淨土真宗の開祖親鸞聖人の降誕法要を左記の日程に依り営むことなれば、何卒多数參詣下されたいと。

聖典講座「歎異鈔講話」

五月十七日(水曜) 午後七時
青年信仰座談會(佛教の特長性)

五月二十一日(金曜) 午後七時
會所 オ一佛教會堂(正)

擔當 白川南教使
五月二十三日(日旺) 午後二時

オ一佛教會堂 米村南教使
オ二佛教會堂 白川南教使

五月二十三日(日旺) 午後二時
オ一佛教會堂

オ二佛教會堂 白川南教使

オ二佛教會堂 米村南教使

日連宗修養會

毎日旺日 午前九時
於 以H 娛樂室

来る日旺日 說教
「布施行」 石原慈順

KEY TO TRANSLATION

- | | | |
|---------------------------|-----------------------------------|------------------------|
| 1. Arkansas River | 13. Prisoner of War for Term | 25. Harvesting Camp |
| 2. Temperature | 14. Lindley Praise Gila Farm | 26. Father Volunteered |
| 3. Growing Season | 15. Around the Denver | 27. Mexican Laborer |
| 4. Rainy Season | 16. Farm Wages | 28. 6F Entertainment |
| 5. Dry Spell | 17. Classified Notice | 29. Women's Federation |
| 6. Outline of Center Farm | 18. Gila Defense Farm | 30. Donation |
| 7. Center Farming | 19. Lettuce Strike | 31. Birth |
| 8. Center Water Well | 20. Classified | 32. Memorial Service |
| 9. Farm Strike | 21. Mrs. Roosevelt | 33. Truck Wanted |
| 10. Strawberry Harvest | 22. Too Many Bed Bug | 34. Seicho-No-Iye |
| 11. Watermelon and Others | 23. Statement for Railroad Worker | 35. Buddhist |
| 12. Arkansas River | 24. Exchange of Prisoner | |

南京中と風の襲撃を受ける鉄道人夫

元センター理髪店に勤務してゐたジエーム山本氏は暫くカンサス州ガーデンシテーセンターアイ鉄道会社に就勤してゐたが二三日前、歸所し本社を訪れ一般居住民の参考にと話された事に依れば不潔極まる寢室に於て一番困るのは南京中と風の率の多きが其の上風呂の無いのはそれ以上困るゝうである。

メキシコ人労働者は八時間働で一時五十五仙それ以上は一倍半の賃銀を支給されゝるに拘らず日本人の賃銀は十時五十五仙一時五十五仙即ちオバタイム一倍半の特典がない譯である。

他にも多数歸所したい希望者もあるが月一回の給料を拂で歸る費用の無い者が多く費用の出来次第歸所する者は今後随分ある模様である。

鉄道人夫生活状態に對する深山氏の聲明

幾多のガーデンシテーセンターアイ鉄道会社人夫が其の就勤先の生活状態に苦情を申立て館府に歸還するに對し人夫補充の仕にあるジョージ深山氏は尤の如き聲明を發してゐる。

鐵道会社當局としても從來の不潔な寢室も今後は出来得る丈改善するに努めて居り現在ではシャワール設備も日本人に満足する程の設備に完成してゐる。之の事實は先日私と同道、調査に行つたユージン權藤氏が證明してくる事になつてゐる。

メキシカンオバタイム一倍半の賃銀は熟練工としての賃銀であつて決して差別待遇より出でしものではないと追加してゐる。

加州人捕虜交換提唱

五月十二日華府特報
今回加州の會委員會は合衆

国政府は米國に不忠誠なる日本人と日本に抑留されてゐる捕虜の交換に關し日本政府と交渉を開始すべしと提案した。

右に就き近く開催される太平洋沿岸三州聯合委員會に附託する一案として同委員會は左の如き建議を採擇し目下轉住所に在る日本人問題の取扱ひは左米全日系人の保護と安全を保證する建前に於て處理するべきであり更に日本軍部打倒を目標とする吾々の総力に關し息業・探索・破壊等反米行爲の防壁に協力するにある。

豆類摘採に女學生使用計畫

YWCA主催の下に今夏六月十日より廿四日迄の二週間ベニアード町ベニヤード高校學校内にハーベスト・キャンプと名稱される臨時寄宿舎を設け五十名の女學生を收容して豆類摘採の仕事と與へ普通賃銀を支拂ふべく計畫されてゐる。

右五十名の中廿五名は亞町YMCYM所屬のガールズ・ザーブ會員が招待され他の廿五名はフェアブロ市及びア・カンソー河平原より募集し異つた人種に共同生活をなこし夜間は種々の娯樂を與へる筈になつてゐる。

該キャンプは全米YWCA日本人部書記エスター・ブ・リセミター嬢がフェアブルYWCA幹部の援助を得て監督され亞町Yの鈴木アリス嬢はピアニストとして又星宮ルース嬢は料理人として参加する筈である。

右キャンプに招待されるのは十九才以下のガールズ・ザーブとYサークル會員に限られて居り来る土曜日に亞町高校ベリヤ校長は他の教師と共にキャンプ参加申込者の學課成績を検討する事になつてゐる故希望者は是非とも土曜日に軍人接待所にて登録する様要請して

ある。

ハーベスト・キャンプに参加する事は銃後の戦線に關ふ事を意味し其の上金と經驗を得、他人種に接して娯樂を共にし日系人を彼等に理解する資料ともなり該キャンプの貢獻する所多しであらう。

二人の父西本氏志願

曾て加州スタクトンに居住し其後デンバー市WRA支局に就職し最近華府に在勤中であつた西本憲氏は先日日系戦闘部隊に志願し右に關し首府に於ける諸新聞は「自分はD.C.より志願した最初の日系人で勇躍入隊する者である。」と更に又「日系市民として國家非常の場合報國の至誠を以て微力を捧げん爲に志願する者である。」等同氏の赤誠に燃ゆる所信を掲載してゐる。



ヒラ國防農園

(11)

ヒラ轉住所百四十英加の國防農園には軍需品用農産物綿、亜麻及びカスター、ヒンター農園を視察し農園及農産物に對し詳細なる説明十六英加の亜麻は今日より取入れが開始されると。

シタス罷業

小賣店段一個十五仙のシタスはサンタツア平原の農園では比律賓及墨國人バカが増給を要求して罷業した。農園つてある。

百名募集

(20)

先週ブラツクマネジャヤ及農業部員に引率され多數セシタ農園を視察し農園及農産物に對し詳細なる説明が加へられ一同大いに得る處があつた。

農園概況

二面より續く

尚農業部集會に於て現今の勞力不足及諸種の問題に關し協議され特に勞力不足は緊急を要し男女百名を募集申中なれば希望者は至急農業部に申込み様要請しつゝある。

農業專向部

農業專向部に於ては五百英加の耕地を擁してゐるが其中約二十英加は既にアイリツシボテトを植付けてある。穀物に對しては更に廣大なる面積を充當してゐる。



尚當部に依つて植付けられたいトメトの苗はヒラセンタ農園より輸送されたものである。

野菜の外に、家畜、養鶏用飼糧として千六百英加の穀物や砂糖段も植付けられてゐる。

アルフアルフアの面積は約五百英加で近く刈取られる事になつてゐる。本部門は三宅智氏を主任として穀物の生産に當りつゝ、五十頭の牛を飼育中であるが、

農業部の目標は事情の許す限り千頭に増し、所内の需要を充たす方針である。

養豚部

當部は中村江名主任の監督の下に六月初旬には約千頭に増す予定で經營されてゐる。飼糧としては當所のギヤベツが利用され、又當部従業員により飼糧穀物の追加英加の耕作も計畫されてゐる。尚前述の如く當部飼育の豚肉は既に數回に亘り食用に

供された事は周知の通りである。

養鶏部

當部は清水秀雄主任の監督の下に置かれ既にセンタに供給されてゐる鶏卵の外に鶏肉もやがて食卓を賑はす事であらう。現在には雛約七千、雌鶏約四百羽で六月中旬には約八百の雛の増加を見るであらう。

以上の諸部門に於る活動は人力の不足に原因して未だ完全とは言ひ得ない。今や外に於る食糧は統制の一途を辿り所内に於ても其の制限を受くるは當然の事である。斯かる時に際して所内に在る勞働可能の居住民中未だ從業して居らぬ者は進んで我農園プログラムに参畫援助されん事を切望するものである。吾々の眞價は其の行動に依つて判断されると同時に再轉住の問題も之に因つて影

響され事多かるべしと信ずる。或者は當農園プログラムは失敗であると言傳してゐるが吾々は斯かる言傳に耳を藉さず如何なる事があらふ其農園プログラムを貫徹を期し以て小にしては居住民の爲に大にしては局部的とは雖も戰時産業奉仕に邁進せん事を希ふ次第である。

報復手段を取らず
但し農園には雇傭せず

轉住所を訪向して一ヶ月の旅程を終へて首都華府に歸還されしルーツベルト大統領夫人は米國が報復手段として在米全日本人を塵にし、たとて日本が今後の東京爆撃飛航士を死刑する点に何等の反響を與へないと言傳すると語られ又ルーツベルト私有農園に二世を雇傭されるかとの質問に對しては謀報局に反對され恐れある故雇傭しないと答へられた。



デンバ地方訪問記

白川南教使

(15)

今回私が約二週間余り傳馬市及びその附近を旅行致しまして目に映じました感想の一端を申述べて見ますと東京爆撃事件の公表があり、ために米人に相當刺戟を與へ當センターより外出することを一時禁止せられた程にも拘らず車中に於ても又市中を歩行致しまして何等變つた様子もなく平穩であつたことは喜ばしいことでありました。尤も市中の大部分の商店の中にはかなり二世を解雇したところもあるやうに聞きました。傳馬市の大部分の百貨店でも品物の數量は不足勝ちで今時左様なものはありませんと云はれて苦笑して出てゆくことが度々あるやうです。外部に住ま

れることが済まないやうな氣持さへすると言つて居ります。と同時に我々が毎日どんな生活振りをしてゐるかと言ふことを聞きたがり深く將來を案じてくられて居るやうです。これに對し外部居住者の生活を見ますと相當に収入もありますが生活様式が戦前とは一變してたとへお金はありませんが大概の食料品がレシーモンされて居ますために毎月與へられた一定のポイントで買ふのですから婦人方も余程物を買ふには頭をはたらかせねばなりません。特に一世の日本人は二十哩以上出て他家を訪向するとか商店に行くには傳馬の合衆國の検事より一週前前にバトミットを貰はねばなりません。而て集會も成可く遠慮して居ります。

次にセンターより働きに出る行かれる人々に對する批評を綜合して見ますにどうも加州に居られた時の氣分が脱けずコロラド州の百姓働きはえうすぎるとか勤め先きの賃金も安すいとかと不平を言はれ特に若い人達には辛抱氣が薄いやうで仕事半ばで出てゆかれるので困ると言ふ聲がかなりありました。然しこれには働きた行かれる人達にも相當の理由もあること、思はれますが一考する必要があると存じます。次にデンバー轉任支局長 シュートムと會談致しまして種々意見を聞きましたところ人手不足の今日一人でも多く外部に働きに出るに欲しいと幾度も申し出て居りました。そのために日本人が働きに都合良い地方を選擇し勤め先きの良家を極力調査して勤める積りであるから若し契約通りでなかつた場合には各地に開設されたWPAのエンブローメントオフィスに行き遠慮なく事由を具申し貰へば交渉解決の勞を取るからと申し出て居りました。又日本

人を同處になるべく集中させない方針で各地に散在させたいと云ふて居りました。がデンバーの市街でかたまつてブラブラ歩いたり街角で立話をする者が急に増へたやうだがなるべく左様なことは避けて貰ひたい。なにと一部の米人達から感情的にも誤解を招く恐れがあるからと言つて居りました。傳馬市には血洗ビジャニタハウスウオーク等の仕事は人手が充分だからこれ以上センターからは入れない積りだが其他の特殊の職業に就くなれば入れると申し出て居り、デンバーホストの悪口記事は遺憾に思つて居るやうでした。各地を巡つて居ます時分にコロラドの氣候は變化が激しく傳馬市及びその附近は八日九日は降雪で二吋はかりも積り加州から來たものを驚かせました。又時には大きな雪が降り一夜の間は作物を台なしにすること

があり六七月には降雨も相當にあると言ふことです。が農業家は何時も天候を案じて居ります。以上簡單ながら私の見聞のまゝを申述べ多少なりとも皆様の御参考になれば此上もなき幸甚と存じます。

夫婦者の目録百廿弗が至當議員の提案

農務省の報告に依れば東南部諸州における農園労働者の賃銀は食事附き月廿九弗十四仙だが米國政府は同方面にて雇傭される日系人夫婦の月給は百廿弗が至當だと提議してゐる。テキサス州選出共和黨ジョンゼエニク議員は、現在の狀態で日系人を使用し得るのは紳士農家イケース内務長官のみだと附け加へた。

靴修繕見習入用

共済靴修繕部では数名の見習工を募集してゐる。希望者は畑野氏まで申込ま小度し。

比律賓人墨国人の罷業

一籃の摘採賃七十五仙より六十仙に値下げされたツレ入の地方八百英加グリーンピー農園の比律賓及び墨国人労働者は先週金曜日より罷業に入つた。農家は罷業者が無條件で復業しないとは煙をプウすると頑張つてゐる。

苺收穫六百三十二封度

苺の轉住所居住民が入所すると同時に植付けた苺畑より四月三十日迄に六百三十二封度の收穫があつたと、同センター新庫は報じてゐる。同センター農園には苺以外に胡瓜(廿五英加)ピーナツ(廿二英加)と、チヨウミンに用ふるムンゴ豆(三十六英加)栽培してゐる由。

西瓜近く食堂に現はれん

西瓜の轉住所百九十五英加の農園にはキヤンタローブサ

七英加・西瓜百三十四英加ホネーデウ三十七英加

キヤンバ四英加一其他多量の瓜類が栽培されてゐるが之等はぼつ／＼熟して今月末には居住民の食卓に供せられると彼地よりの通信は報じてゐる。

アリゾナ州に最初栽培されたストリンゲンズは既に摘採されてゐるが今後天候急変によつて損害を蒙らな

セロリーは植付が遅れた為成績は余り好くなく約一万ポンド食堂に供給された。十一月より他の轉住所へ輸送された七十五貨車の新鮮な野菜にはピーツ・カボトグリーン・アニオン・タアナツプ・キヤベジ等が含まれ其の上、苗木六十本のベルブツバーと二万五千八百本のトメトも並町及びトバツの轉住所へ出荷されたと。

アーカンソー平原

以下二面より続く

最後の降霜

五月十三日	十月十五日
四月十八日	十月十一日
五月十四日	十月八日
五月十六日	九月二十九日
五月十七日	九月二十二日
五月一日	十月十七日
四月二十八日	九月二十五日
四月十五日	十月二十二日
五月二日	十月十八日
四月七日	十月二十一日

政府捕虜使設計畫

農園、道路等に約二千人

華府五月十二日特報

政府當局に於ては捕虜を農園若くは道路工事に使役する事に就き検討中であると發表したが當局名は公表されてゐない。當局では全園に約二万の捕虜が抑留されてゐると發表してゐるが、ユニシア占領に際して捕虜となつた獨伊人を加へると相當な数に達するものと見てゐる。敵国軍人の使役に就いてはジエネヴアー協定に従ふ約定になつてゐる

ものであつて、同協定に依れば捕虜は農園の如き部門に使役する事は出来るが、其の敵国に敵対する戦時工作に使役する事は禁ぜられてゐる。捕虜を農園に使役する場合、其の監視が又一問題であつて、結局は集團的に労働せしめて夜は單獨の館府に收容して監視する事にならう。

ければならない。現在では捕虜一日の労銀として八十仙、外に一日の小使として十仙支給される。又捕虜の中でも正式に入隊せる者のみ使役されるもので、將校は使役は除外される。將校に支給される手當金は其の階級別に準じて、月額二十弗、三十弗、四十弗を支給される事になつてゐる。



當所長比良農場を稱讚

先般比良轉住所の視察を終へ歸來せるリンドレー所長は、同所農園機構が頗る圓滑に進捗してゐると冒頭して語る。「同所農園約一万英加は灌漑可能の天恵に浴し、到處農産物生産の綠園となつて居り、自給自足の傍、多量に亘る野菜類を他の轉住所に輸送してゐる。農園には五百名以上の男子が終日就働、又婦人や少年達も多数一定の時間従業して居り、農産奉仕に總力を捧げて居る事實は到る處に看取された。尚所長は同地は氣候の關係上年二回收穫の特典に就き附言した後、二ヶ所の館府が合一して整然たるセンターを形成してゐる事に感心したと語を結んでゐる。

センター農園

飼馬料・穀物・青草類

重町農園には主としてセン
ター内牛馬に與へる秣とし
一九四二年には次の穀物秣
類が栽培された。

アルファルファ 二六五英加

さとうもろこし 五七八英加

穀物 二五七英加

コーン 二四英加

一九四三年に栽培するべく

計畫されてゐるのは

アルファルファ 六七五英加

穀物 一七五英加

コーン 五〇〇英加

さとうもろこし 二〇〇英加

さとうもろこし 四〇〇英加

合計 一九五〇英加

コロラド州農園労働者養成

成部にはセンター農園五〇〇

英加を収上げ二百英加の穀

物を植付ける計畫を樹てゐ

る。之は農業に關して民

衆を教育する共に於て又人

員不足を緩和する共に於て

得策である。

土壌・地質状態

地質は砂土でセンター北方

に流れてゐる川の方面に傾

斜し排水状態が良いので

一英加に三噸乃至四噸のア

ルフア又五〇一六〇ブッシ

ルの太藁が收穫される。

灌漑用水はアーカンソム河

に水源を有するラマー運河

灌漑會社より供給されてゐ

る。

農園の耕作準備

農園は四〇乃至五〇英加を

單位として仕切られ始終

フオーマンが就働者を監督

して働いて居る。穀類は殆

んど自然に成長するので

收穫期以外には余り労働者

を要せず随つて現在は一單

位に二三名の就働者を必要

とするのみである。冬の向

に土地は五六吋より八吋の

深さに鋤き耕されアルファ

ルフア一畑には肥料として

麥藁が交ぜられて灌漑用の

溝が掘られる。

現在の状態

センター北方と西方四四〇

英加に六吋より八吋に伸び

たアルファルフアが立派に

成長し東北に當る六〇英加

には農園就働者養成部に依

つて蒔付けられた大麥が美

事に成長してゐる。

外部農家に貸與

農園労働者不足と充分な農

具が難い爲、農園全部使

用出来ず随つて残余のサタ

ファイ鉄道線北方の二五〇〇英

加は外部農家に貸與されて

ゐる。農園部は最初一五五〇

英加の耕地に各種農産物を

植付ける計畫を樹てたが

労働者不足の爲、一七六五英

加に減少するの止むなきに

至つた。

發展しない理由

外部農園に比較してセンタ

ー農園労働者の賃銀は低廉

なる事、居住民一般に農

業に興味を持たない事、

WR Aの外部轉住策等が原
因して今年初頭より就働者
の不足に困り、其上種類・農
具も購入出来ず農業部は
充分發展し得ない。

現在農業部に就職してゐる
七十五名は養豚・養鶏・野
菜及穀物畑の仕事に分割さ
れてゐるが無論現在に於て
も人数は不十分だが特に
收穫期には夥しい人員を要
する。同じ就働員が穀類の
畑と養豚部又は養鶏部の方
面を受持ち労働者の不足を
補ふてゐるが野菜畑は如何
にして労働者を募集すべき
か苦心してゐる。

労働力の部分的解決方法
農園就働者養成部は農繁
期に学童を動員してパート
タイムに生産物摘採を援助
すると同時に彼等に実地
教育を授ける事が出来る。

四月十三日農業部委員及び
一世評議員の出席せる區支
配人集會に於て各區より三
人の代表者が選舉され之等
の人々を通じて一般居住民
に農業部の重要性を報告す
べく決議された。 所長・
農業部役員・評議員・區支
配人は屢々集會を持ち、
農園労働者解決策に付き討
議してゐるが而し居住民が
センター農産物に對して関
心を持ち其の減退は健康を
害する事を認識して、卒先し
て農園労働に參加しない限
り、此の問題は解決されない
ものと見られてゐる。

古手物モーターポンプの
使用許可

エリゲーションエンジニア W B
ウラック氏の發表に依れば、今
回本局よりセンター内に現
在掘られてゐる井戸に古手
物モーターポンプの使用許可があ
り、二週間内には到着するもの
と豫想されてゐる。

現在二つの井戸は既に完成
してゐるが他の一つも近く工事
に着手される筈で五週間及
至六週間の内には完成する
ものと見られてゐる。

農園概況

農業部報告

緒言

現下の境遇に於て多数の居住民は再轉住問題に深い関心を持つて居るか之は個人的に處理されねばならぬ問題である同時に又一方給料の有無性質の如何を問はず爲さねばならぬ幾多の業務の存在も考慮されねばならぬ問題である。

轉住前に於て所謂要渡なる社会は最早過去の存在であつて現在の吾々は鐵柵園内に在るか又は園外に出るか之の二途に一途を撰ぶ境遇に置かれてゐる。兎に角吾々は何處にか社会的存在の地を求めねばならぬ運命の支配下に在る者である。是の際吾々は自己憐憫と官費衣食の退嬰的觀念から脱却しなければならぬ。

吾々は曾て豫期しなかつた一大打撃を受けた小數派に

属する者であつて吾々が直面する現在の社会には幾多の難局が絶えず迫つてゐる。が吾々は敢然として之を克服する氣魄を以て善處しななくてはならぬ。

一方外部に在る者も諸般の難題に遭遇し且つ生活様式も亦激變して苦闘を續けてゐる現状である。

諸て国家非常の時に當り吾々は戰時産業奉仕の見地より觀て農園プログラムを援助する事は最も時宜を得た事と確信する者である。論ずる迄も無く多数の農産物は生産に困難であり又政府に權能があるとは謂へ購買し得ざるものもある。即ち肉類や野菜類の如きは益々入手に困難を感じてゐる現状である。斯かる情勢下に於てセンターの生活必需品生産の重要性は何人と雖も認識しつゝある事は敢て多言を要さぬ事である。左に當部の概況を報告して居住民の参考に資するものである。

農園部門

農園組織は家畜部(豚生養鶏部)野菜部の三部門に分類經營中で既に豚肉や鶏卵は當農園の産物として居住民の味覺を喜ばせ又スピニチや鶏肉も相次いで食用に供せられる日も遠からずである。

農業部人事

當部は井上政之助氏を部長とし野田ジヤツク、中谷ロイ兩氏を補佐に任じ宣傳部は町田正造氏之を担当し更に局部的に單位を設けて主任を置き從業員と共に一致協力して自給自足の實現に専念してゐる。

第一部	淺井義雄	9 E
第二部	阿部実巳	7 E
第三部	吉永明吉	7 H
第四部	中村江名	8 F
第五部	鈴木 椿	12 E
第六部	村田政二郎	11 E
第七部	木本楠太郎	12 E
第八部	淵上平太	7 G

野菜類別及英加數

左記は既に播付けられた野菜類別並に英加數である。

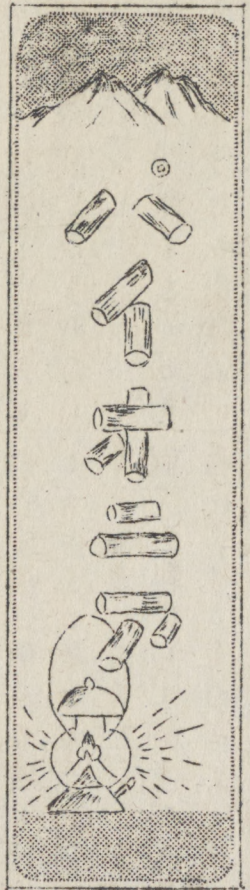
タリーツク	三英加
キヤロット	五英加
スピニチ	十英加
グロコリ	十英加
グリニオン	一英加

トメトは農業専門部員の植付

尚右の外約二百五十英加程植付未了の面積が残つてゐる。右記各主任は各々最善を盡して其職場を守りつゝある者であつて野菜部の成果は之等各主任の減私・奉公の賜と言ひ得るであらふ。

尚茲に特記する事は各主任並に従業員が給料問題の如きに拘泥せず全居住民の公安奉仕と謂ふ誇を唯一の報酬として甘んじて居る事であつて當農業部に於ても全當事者の崇高なる奉仕が我々の

以下六面に續く



農業版

アーカンソー平原

コロラド州の約四分の一、即ち三万平方哩は大アーカンソー川の灌漑に位し川の水源は州の中央に存在し其の流域はコロラド州の西及北に依つて分たれ大陸を二つに分割してゐる。

アーカンソー川の主な支流はフアントン クリーキ セイントチャールス ヘーア ノー アピシヤーパー 及ブーガトーレ リバーである。

此の方面の農業は主として灌漑に依つてなされてをり其の大部分は小山地带から東部平原に延長されてゐるがアーカンソー境界及び

上部平原では灌漑なくしてへー！小麦・ポテト等大量に生産されてゐる。

又山麓地带及灌漑不可能平坦なる場所では牧畜が盛んに行はれてゐるが全体に平坦なる土地の気候は略同等の様である。

湿気少く太陽の光線多く雨量少く一年を通じて半年以上は暖気に恵まれてゐる。適度の強風、夏季の暑氣比較的強い。

冬は降雪少く時々永引く厳寒に見舞はれる事があるが総体に凌ぎ易い山麓地帯の比例湿気は平地のそれよりも十五%多い様であるが一%記録された事もあらず。強風は春季に多く夏の

末頃より秋にかけての時期が一番少いのである。

平均温度

海拔五千呎以下の温度は夏季に於ては百度乃至百六度の位は珍しくないが其れ以上の海拔に於ては百度以上になる事は殆んど無いと言つて良い位である。

湿気の少ない関係上夏季比較的凌ぎ易く湿気の多い地方に比べ暑氣の爲健康を害する事は殆んどない様である。

冬季の温度は最低零下十度位に止まつてゐるが時々零下二十度(零下四十度)に下り、零下四十二度(零下四十四度)に下る事もあるが斯の如き寒氣は非常に珍らしいものとされてゐる。

發育期

海拔六十呎の作物發育期は春の最後の降霜に初より秋の最初の降霜に終る。其の間約五ヶ月半即ち四月下旬より十月中旬頃まで續くのである。

雨期

降水量は平原地十二吋位より高原地二十吋位である。珍しい事には一ヶ年の雨量の七十五名は暖期間即ち四月上旬より十月上旬にかけて降るにも拘らず六月頃の旱魃を非常に恐れてゐる傾向である。

降雨は往々にして大雷雨と共に襲来し二十四時間内に四吋乃至六吋の降雨を見る事は珍しくない。

乾燥時期

アーカンソー平原は時々四五週間位宛の乾燥期に直面する事がある。フエブ口測候所の千八百八十八年以後の記録に依れば二十日より六十日間の乾燥期は八十四回もあつた程で其の中四十回の期間中只百分の一の雨量を見た丈で其の外三十一回の期間中百分の一の雨量を測り得たのは二度に止まつてゐる。

之の乾燥期は秋から冬にかけ生じるのを常としてゐるが同期間中の記録は五十八回で春季二十二回夏季十四回の割になつてゐる。

海拔三千五百九十呎のプラッ郡過去四十年間の平均雨量を左に明詳すると

一月	百分の二十五
二月	百分の五十三
三月	百分の六十五
四月	百分の七十
五月	百分の七十七
六月	百分の八十二
七月	百分の八十八
八月	百分の九十四
九月	百分の九十八
十月	百分の九十九
十一月	百分の九十九
十二月	百分の九十八
合計一年間平均雨量	十五吋百分の七十五と言ふ数字になる。
更に過去十年間の作物に損害を與へ得る降霜を左に紹介すると	

以下四面の三段に續く