

P4.11

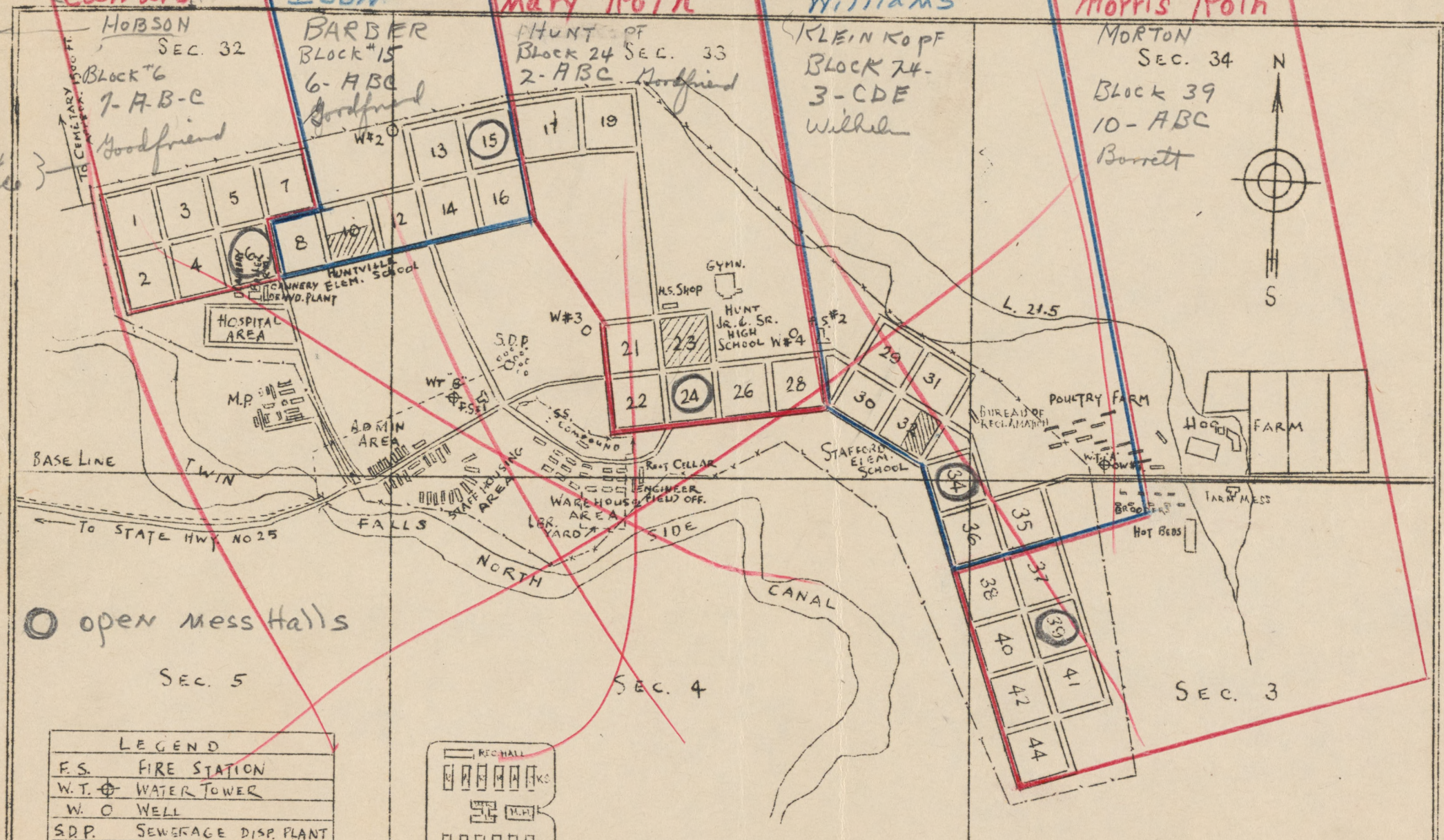
67/14

c



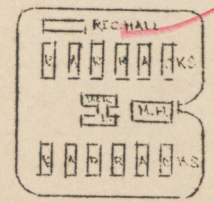
Relocation  
Welfare  
Resettlement  
Assistance

Chapman  
Carward  
Alexander  
ISON  
Gilmore  
Mary Roth  
Shellhorn  
Williams  
Harding  
Morris Roth



○ open mess Halls

LEGEND	
F.S.	FIRE STATION
W.T. ⊕	WATER TOWER
W.O.	WELL
S.D.P.	SEWERAGE DISP. PLANT
----	OUTFALL SEWER
***	FENCE



TYPICAL BLOCK

0 400 800 1200 1600 2000 FT.

GENERAL LAYOUT  
MINIDOKA W.R.A.  
HUNT IDAHO

59.44

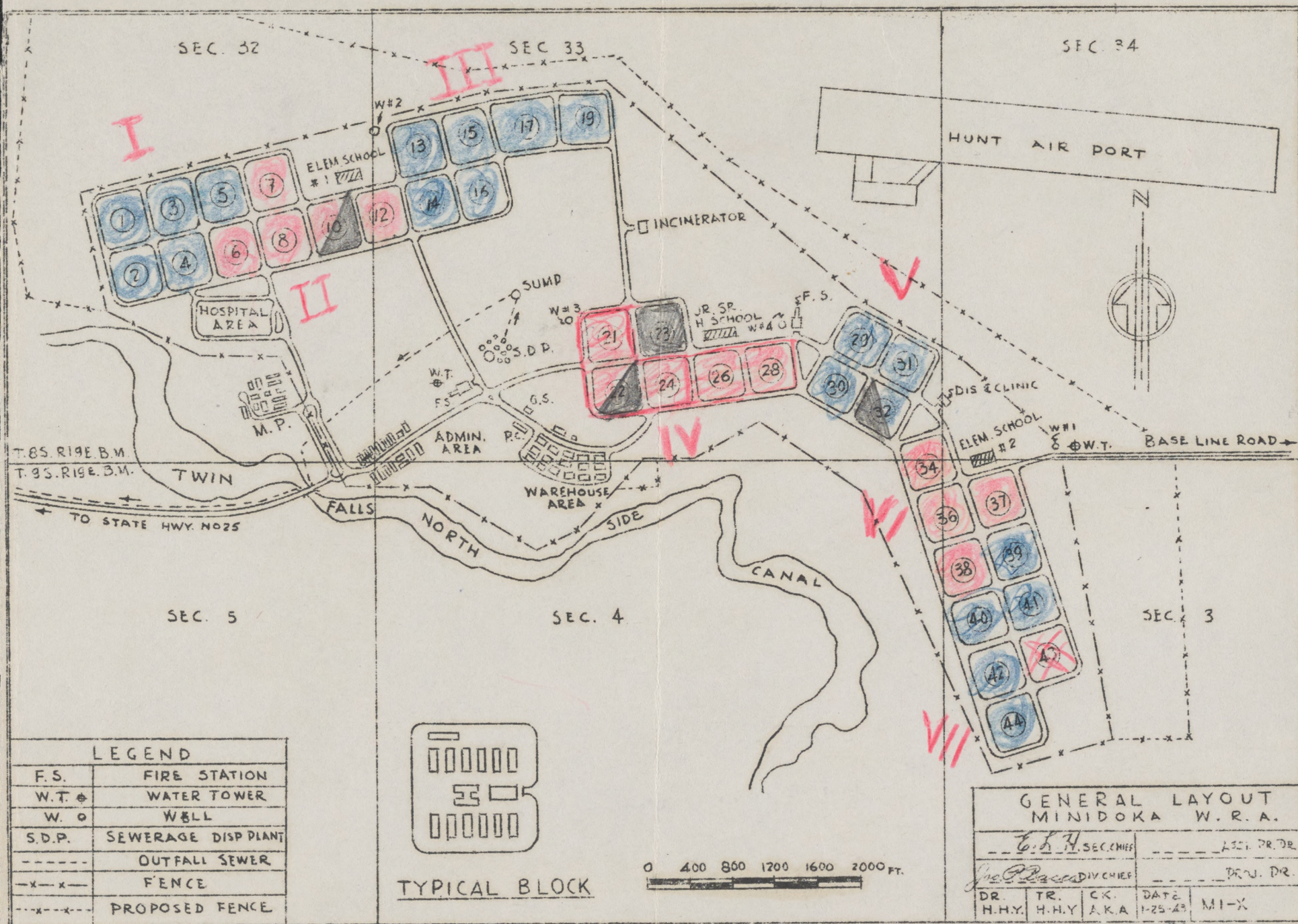
weston



$$\begin{array}{r}
 50 \\
 \hline
 32,0 \\
 128. \\
 36 \\
 \hline
 164
 \end{array}$$

$$\begin{array}{r}
 46 \\
 8 \\
 \hline
 368
 \end{array}$$





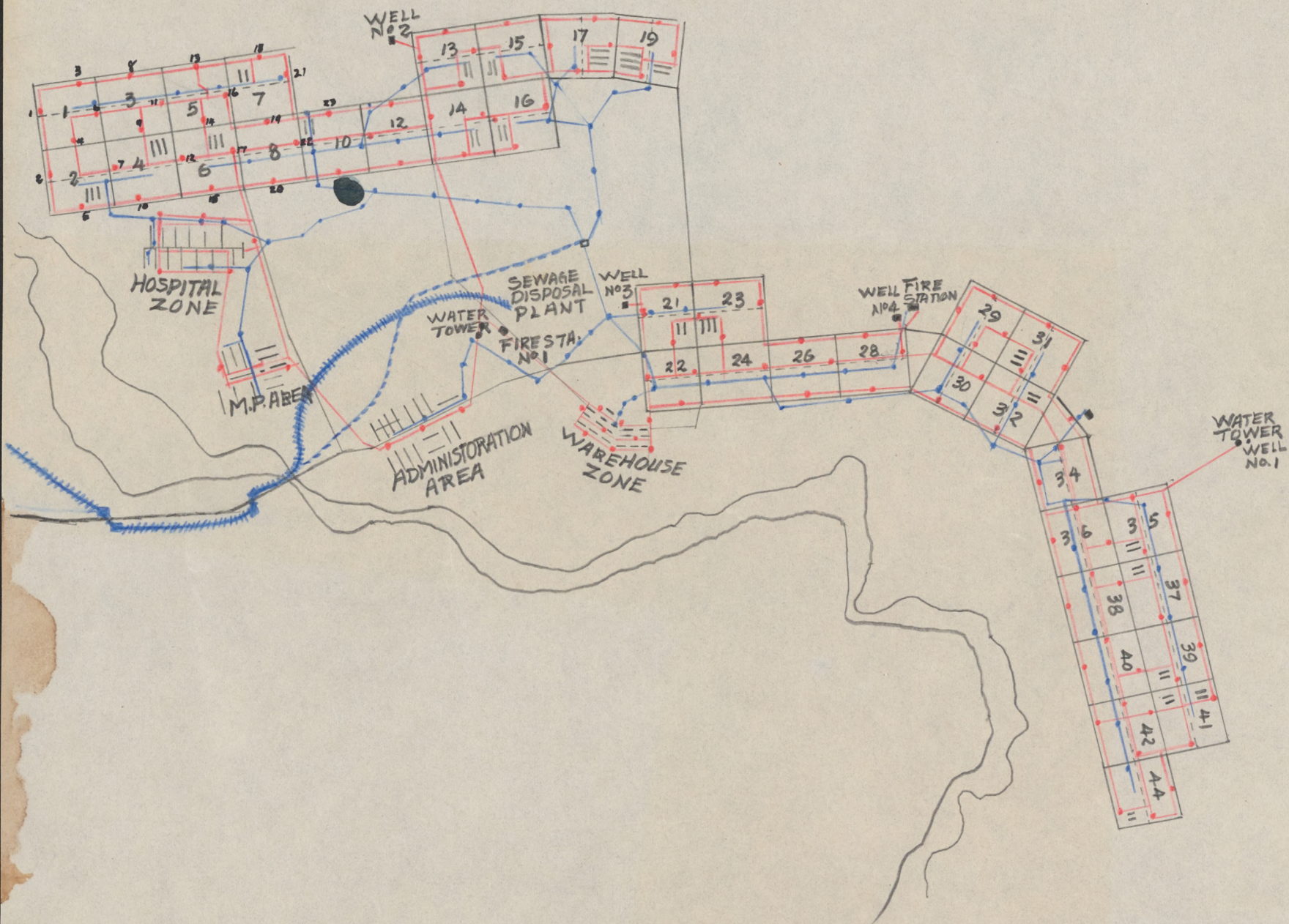


JOSEPH P. BACCA, PROJECT ENGINEER  
CHIEF, PUBLIC WORKS DIVISION  
MINIDOKA WAR RELOCATION PROJECT













W 500

BASE  
LINE

E 1000

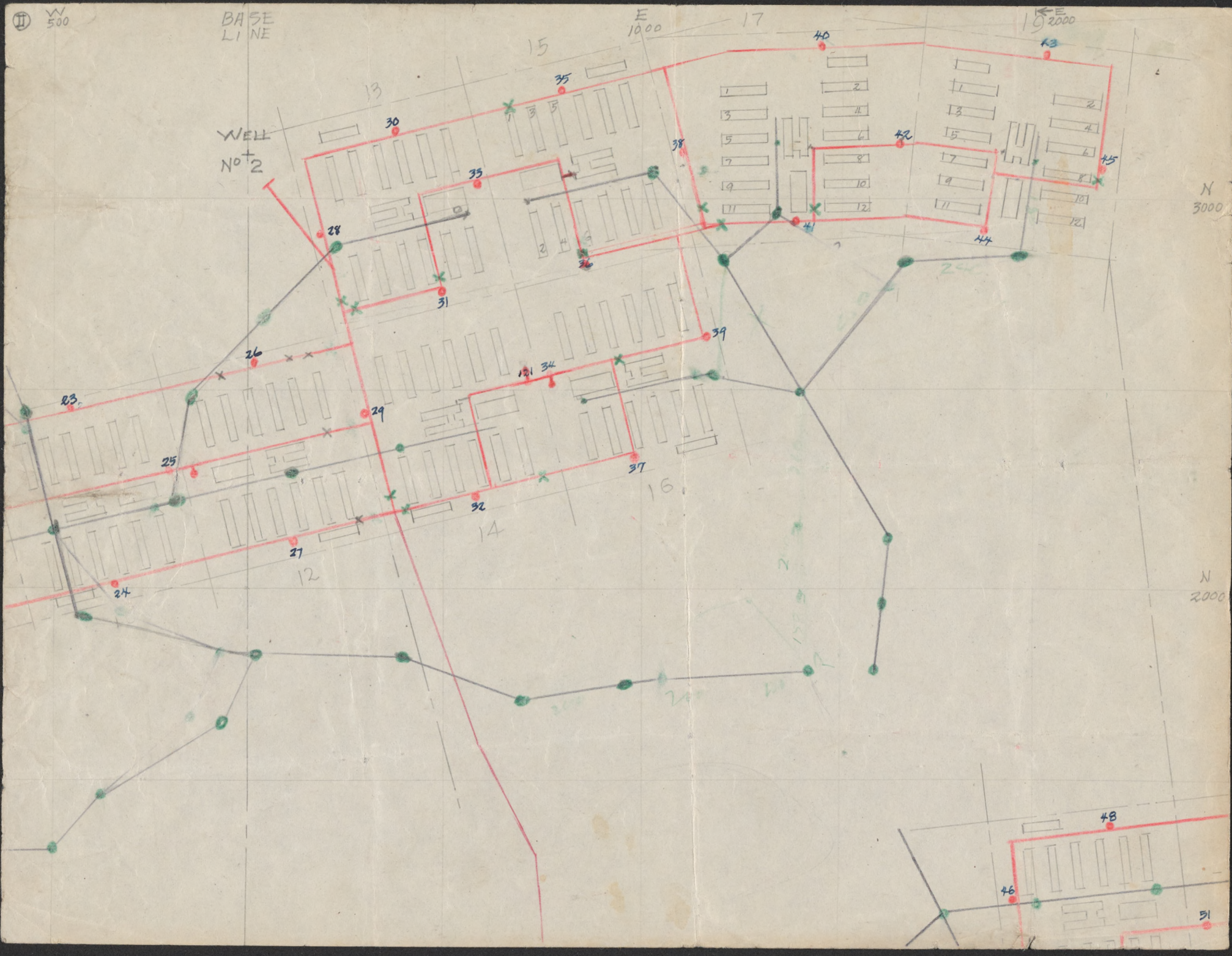
17

E 2000

N 3000

N 2000

WELL  
No 2







WELL  
No 1

WATER  
TOWER

34

36

38

40

42

44

35

37

39

41

S  
1000

S  
2000

E  
5000

E  
6000

76

81

86

91

96

100

78

83

88

93

98

101

80

85

90

95

99

77

82

87

92

97

101

E  
6000



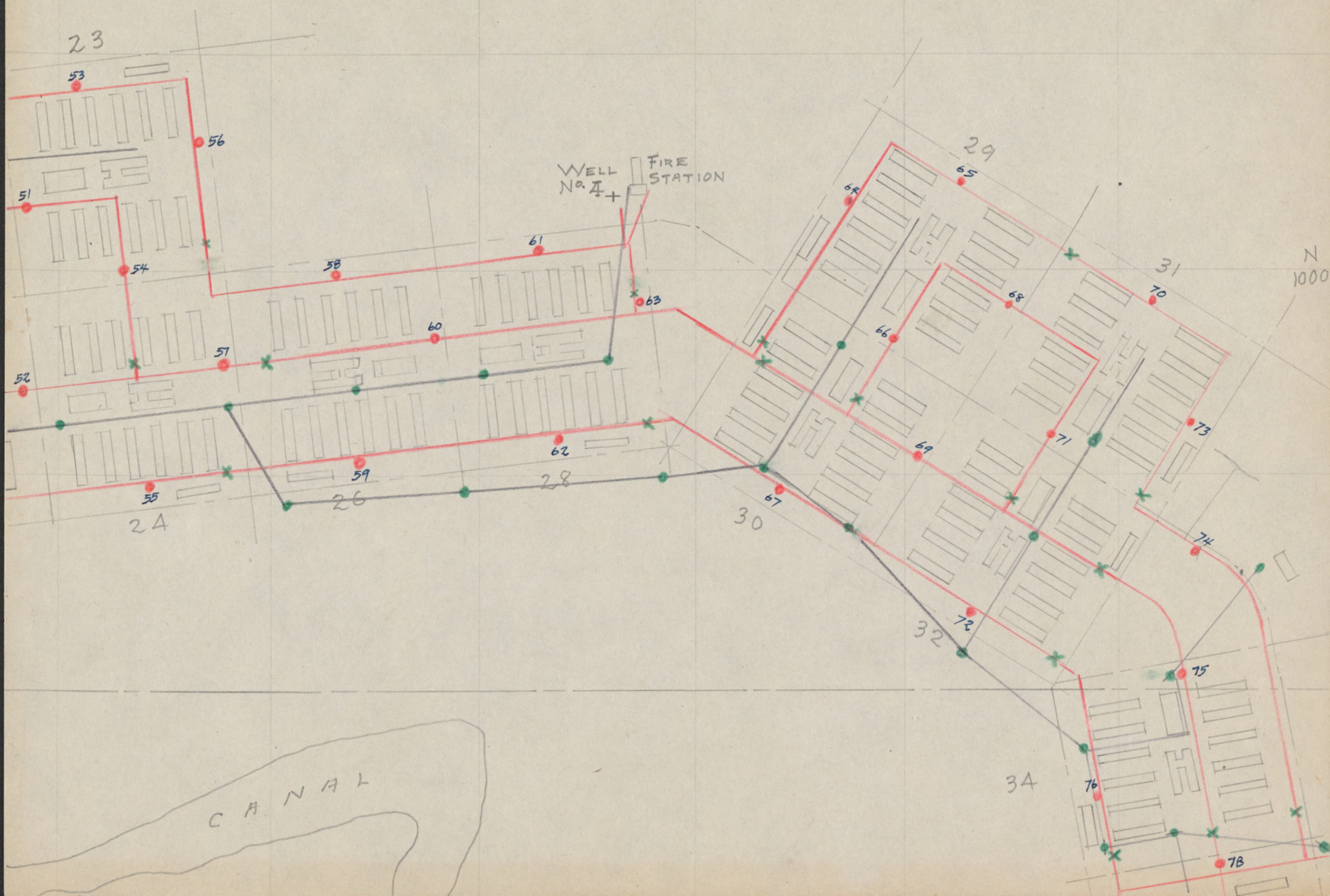


E  
3000

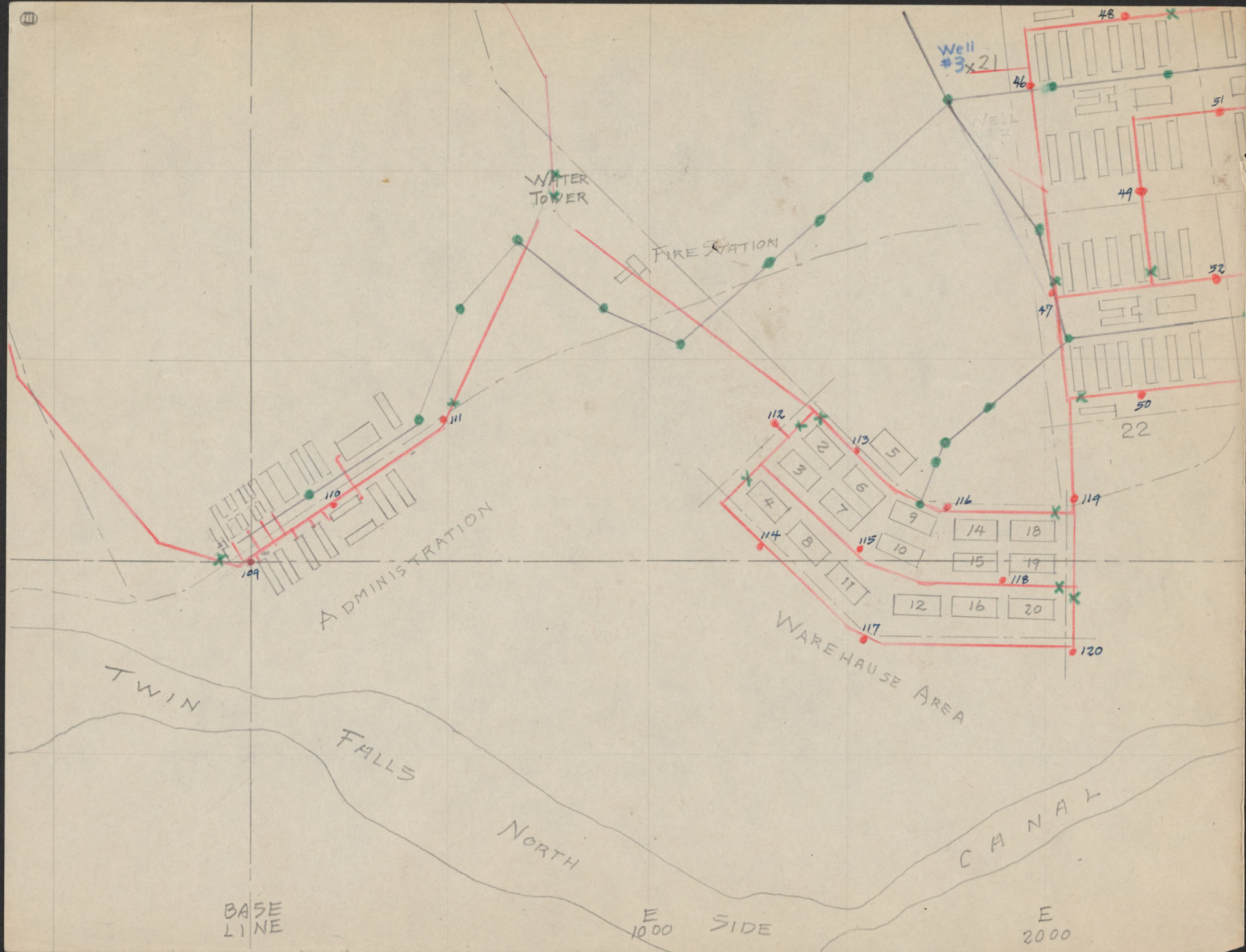
E  
4000

E  
5000

N  
1000









W  
500

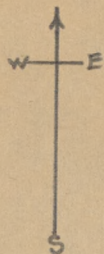
N.W. BASE LINE N.E.

E  
500

(N. 500

N 500

# ADMINISTRATION AREA



Post  
Office

GARAGE

To M.P. Area  
 To Hospital  
 To Gate

BASE  
LINE

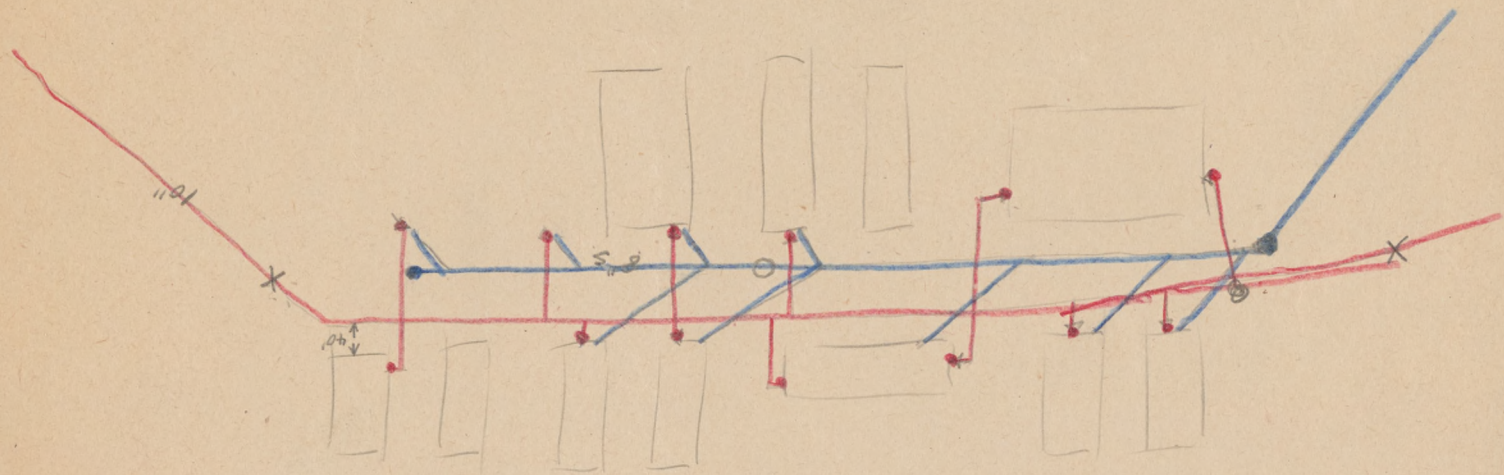
W  
500

BASE  
LINE

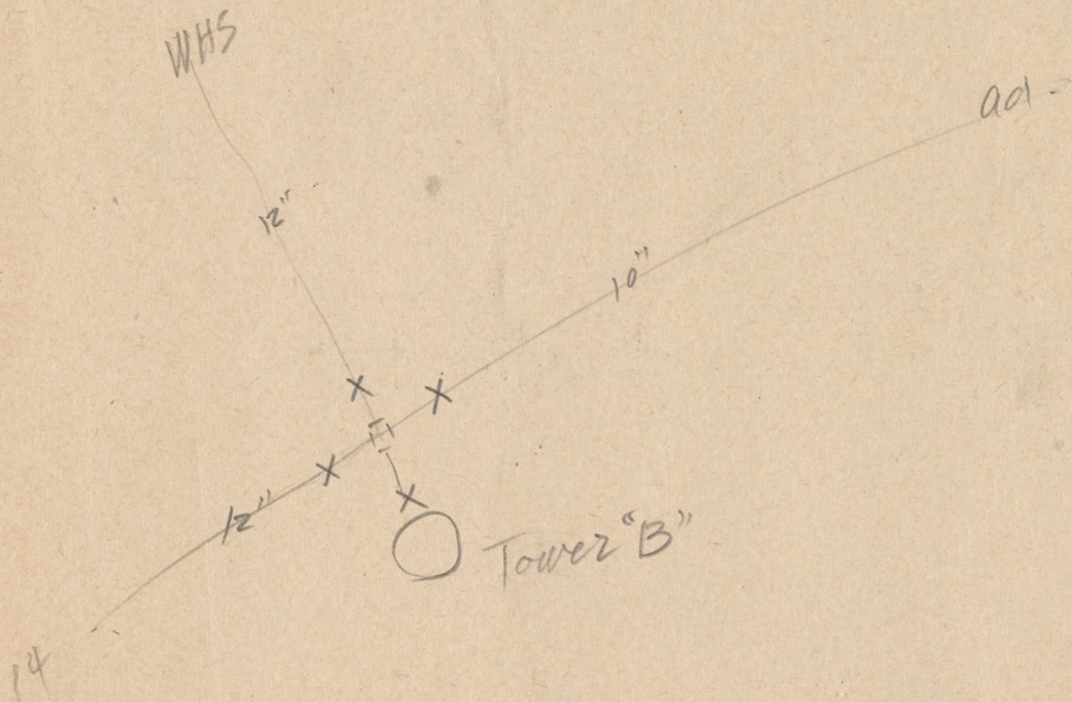
E  
500



14 Crossing









W 500

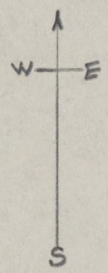
N 500

BASE  
LINE

E 500

N 500

# ADMINISTRATION AREA



SCALE 1" = 100'

WATERMAIN HYDRANTS VALVES  
SEWAGELINE MANHOLE

← To Hospital

← To M.P.A.

BASE  
LINE

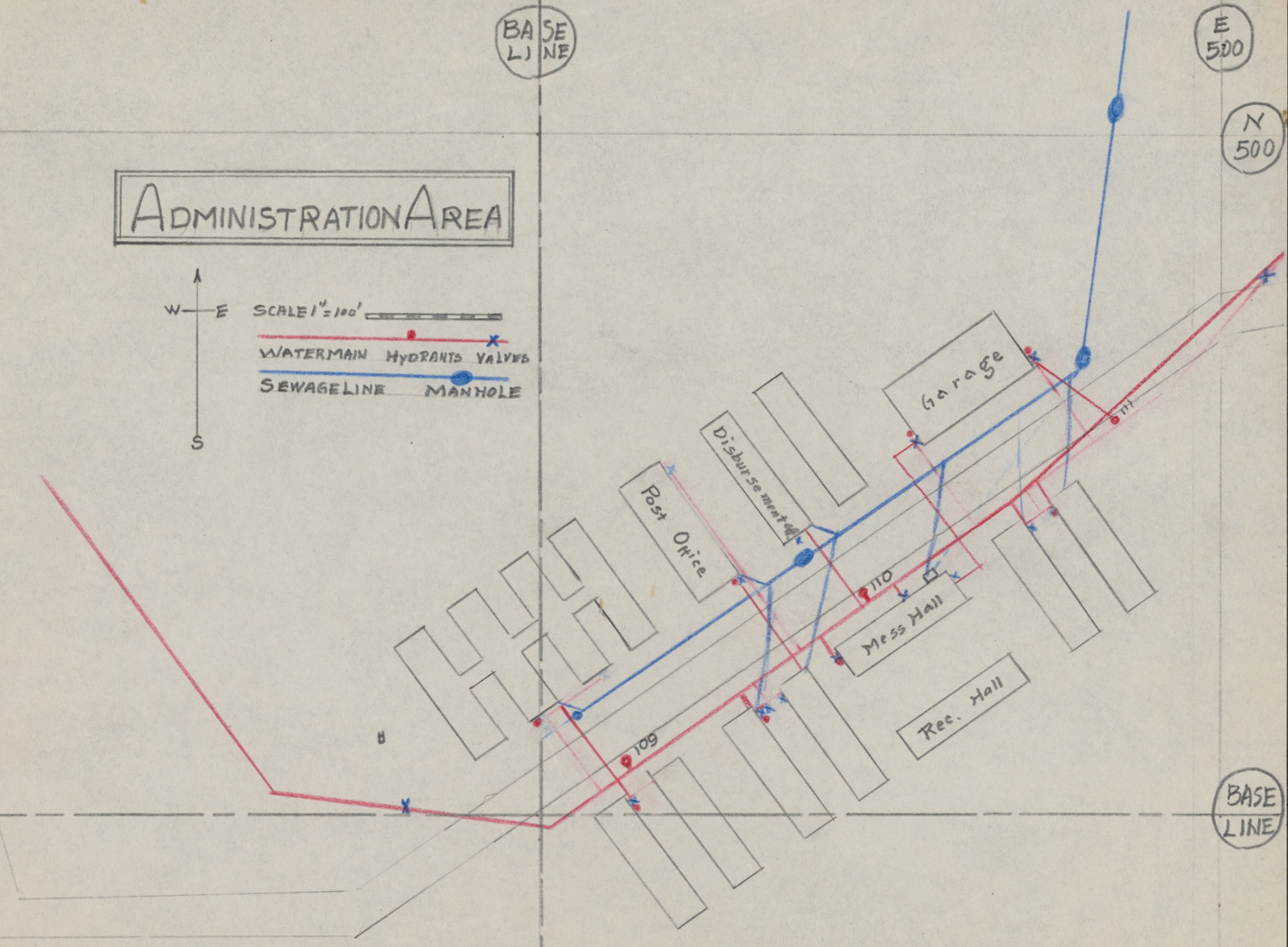
← To Gate

W 500

BASE  
LINE

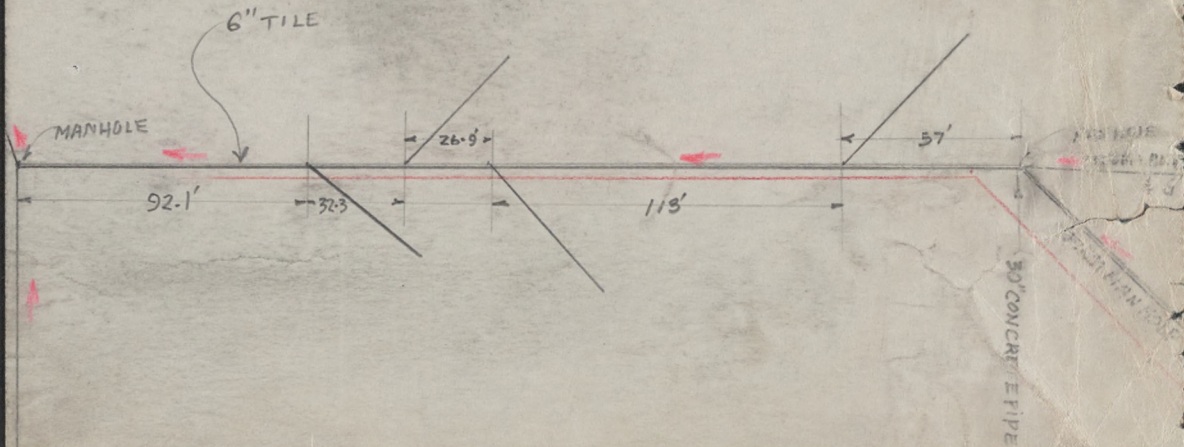
E 500

BASE  
LINE





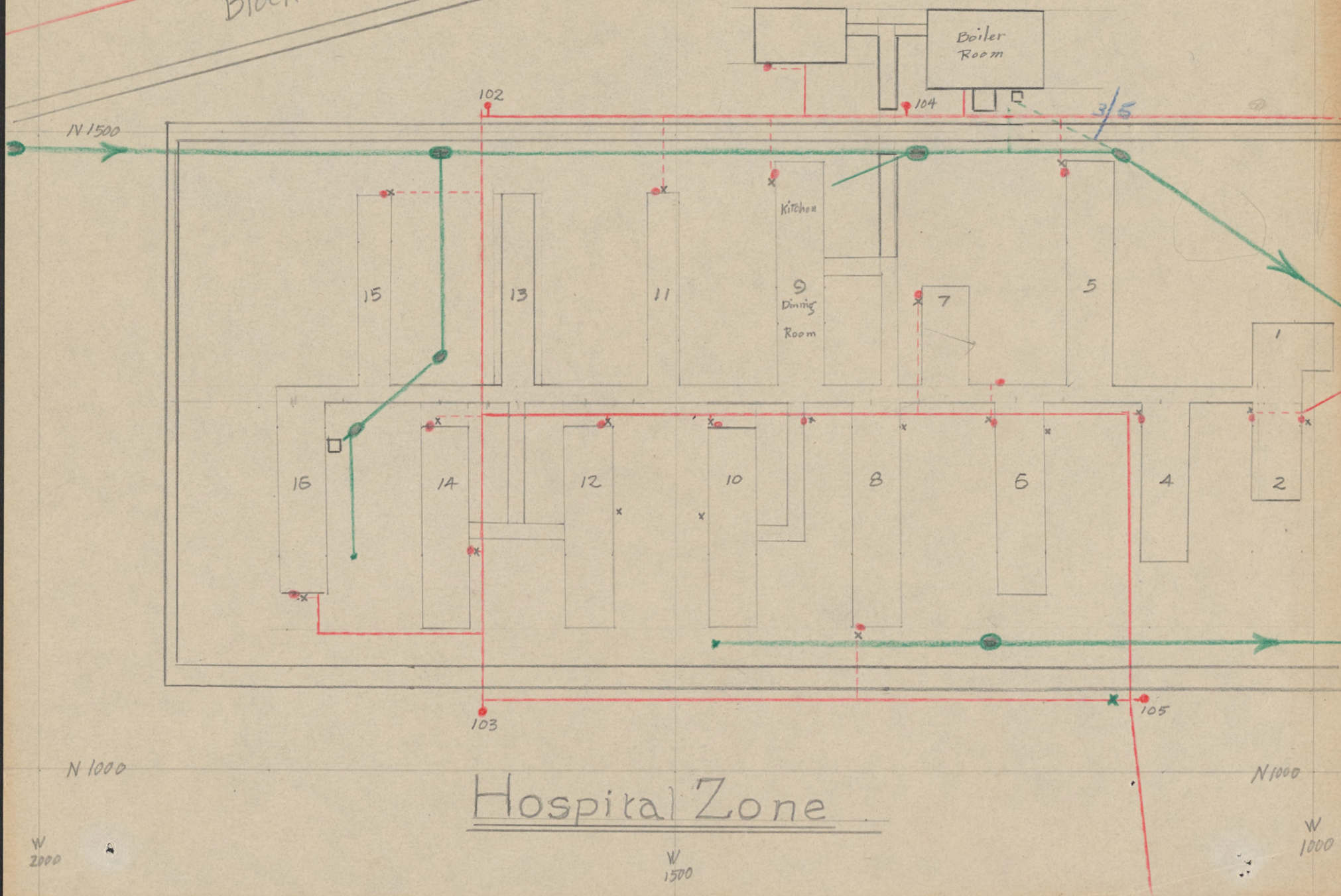
# Stoff Housing Sewage Y5



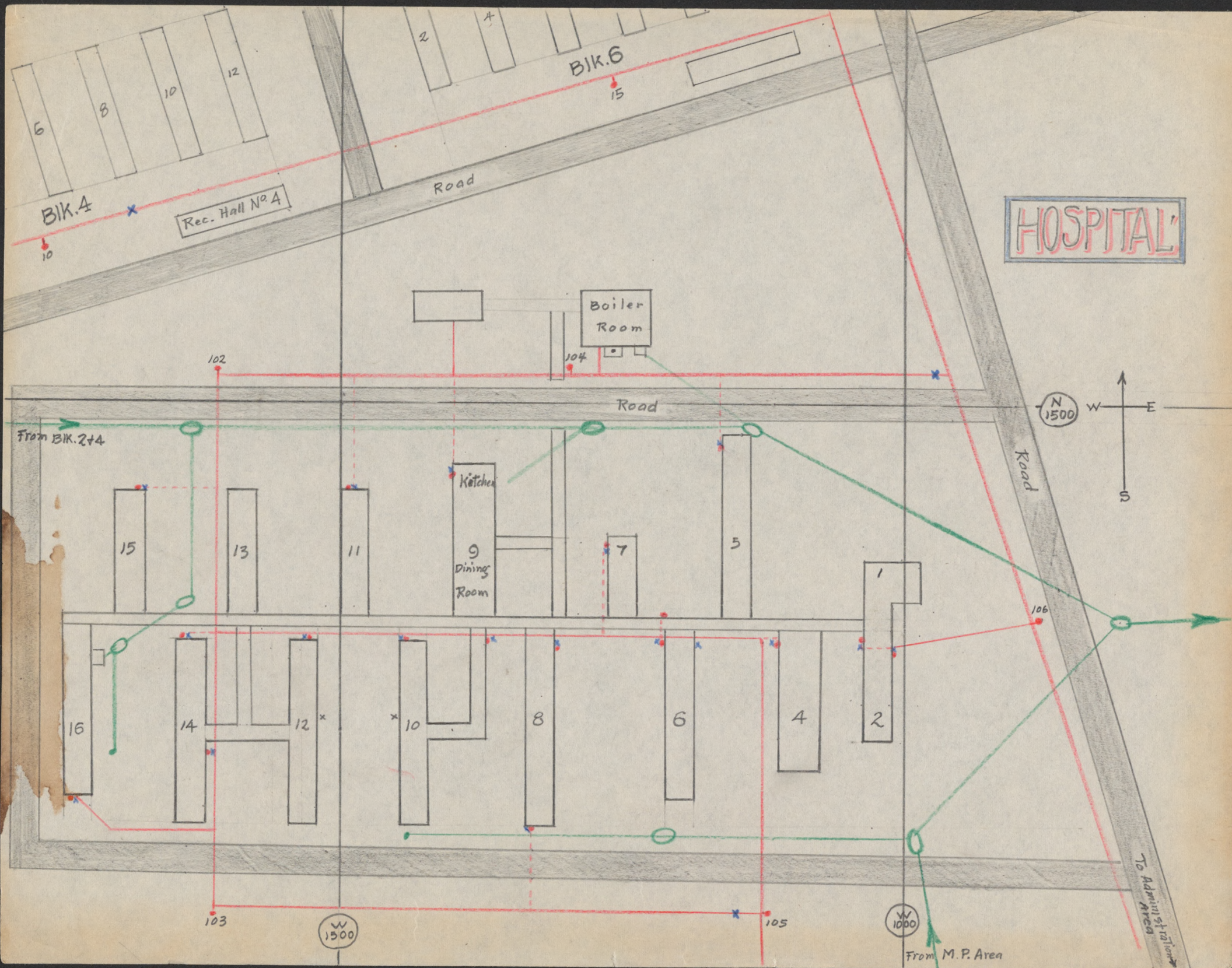


W  
1000

Block A









N  
1000

W  
1000

W  
500

N  
1000

107

108

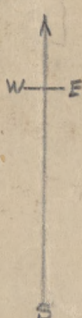
N  
500

N  
500

Black  
Smith

WARE  
HOUSE

Shop

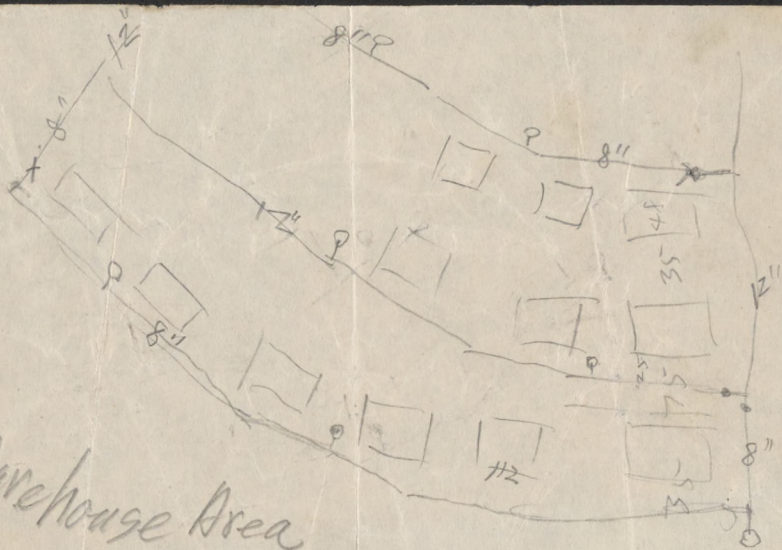


M.P. AREA

W  
1000

W  
500





Warehouse Area



N.  
500

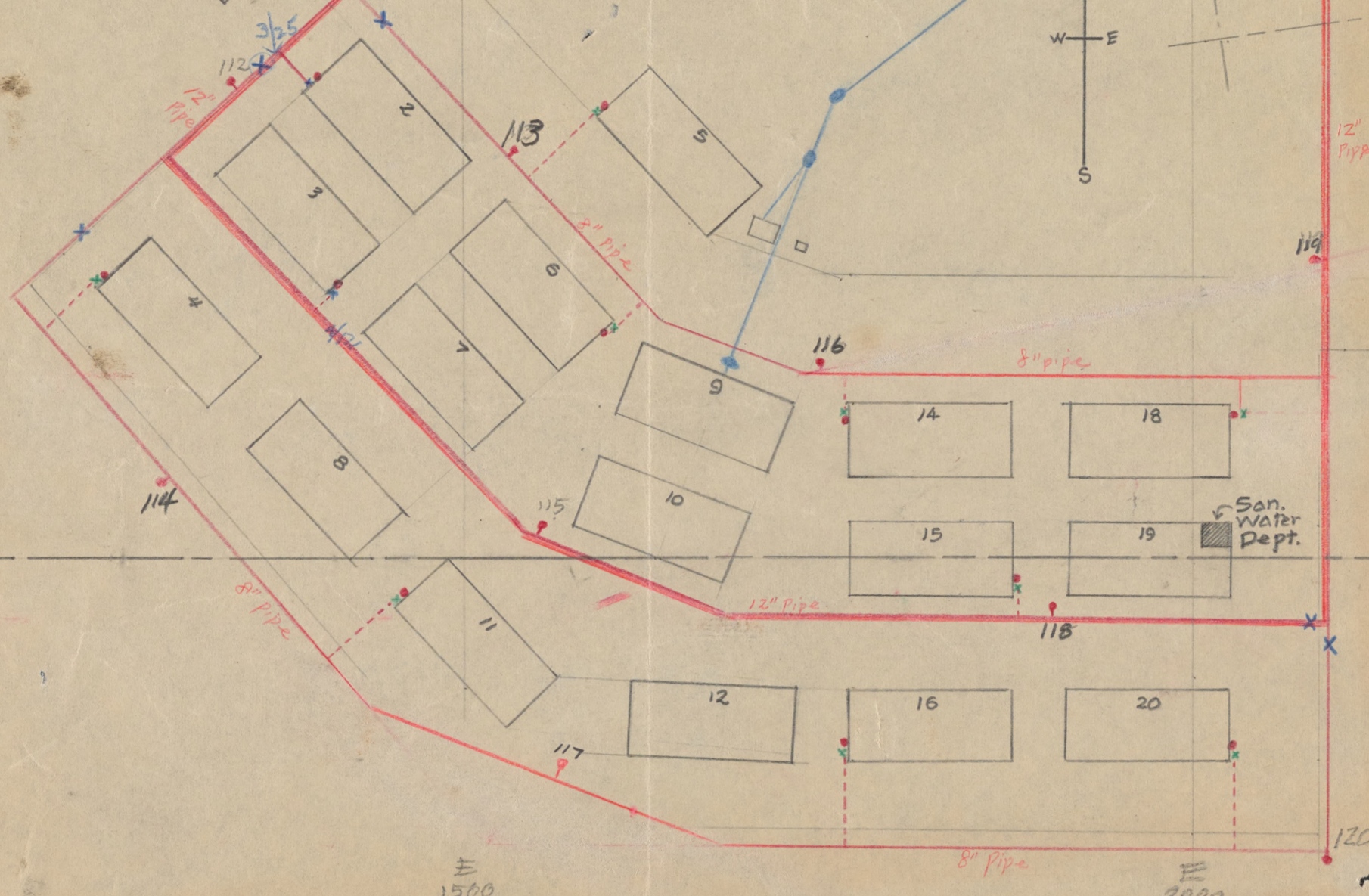
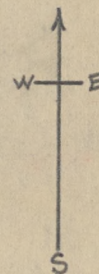
Gasoline  
Station

E  
1500

WAREHOUSE AREA

N  
500

Block 22





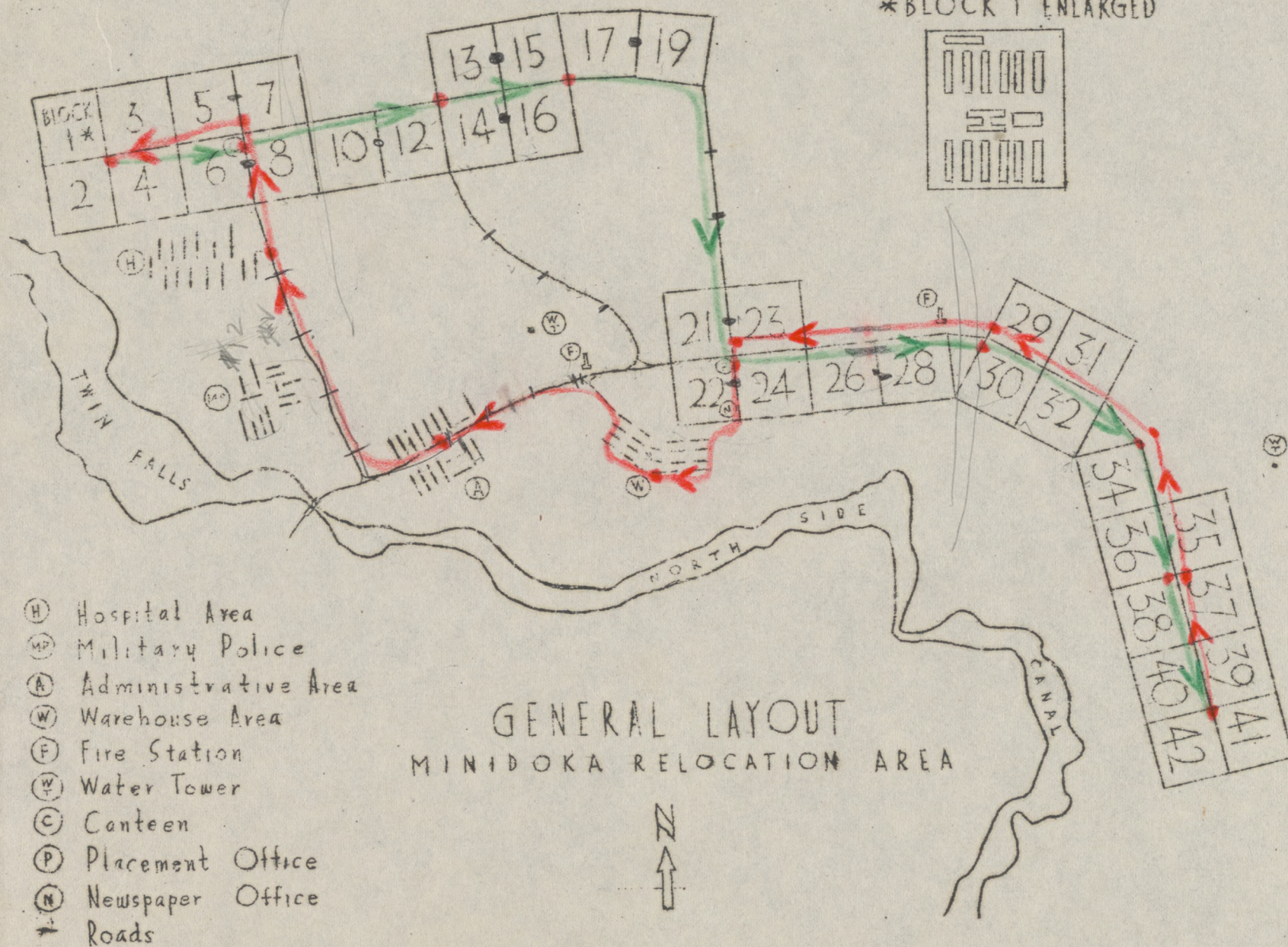
12-16

12

12-20

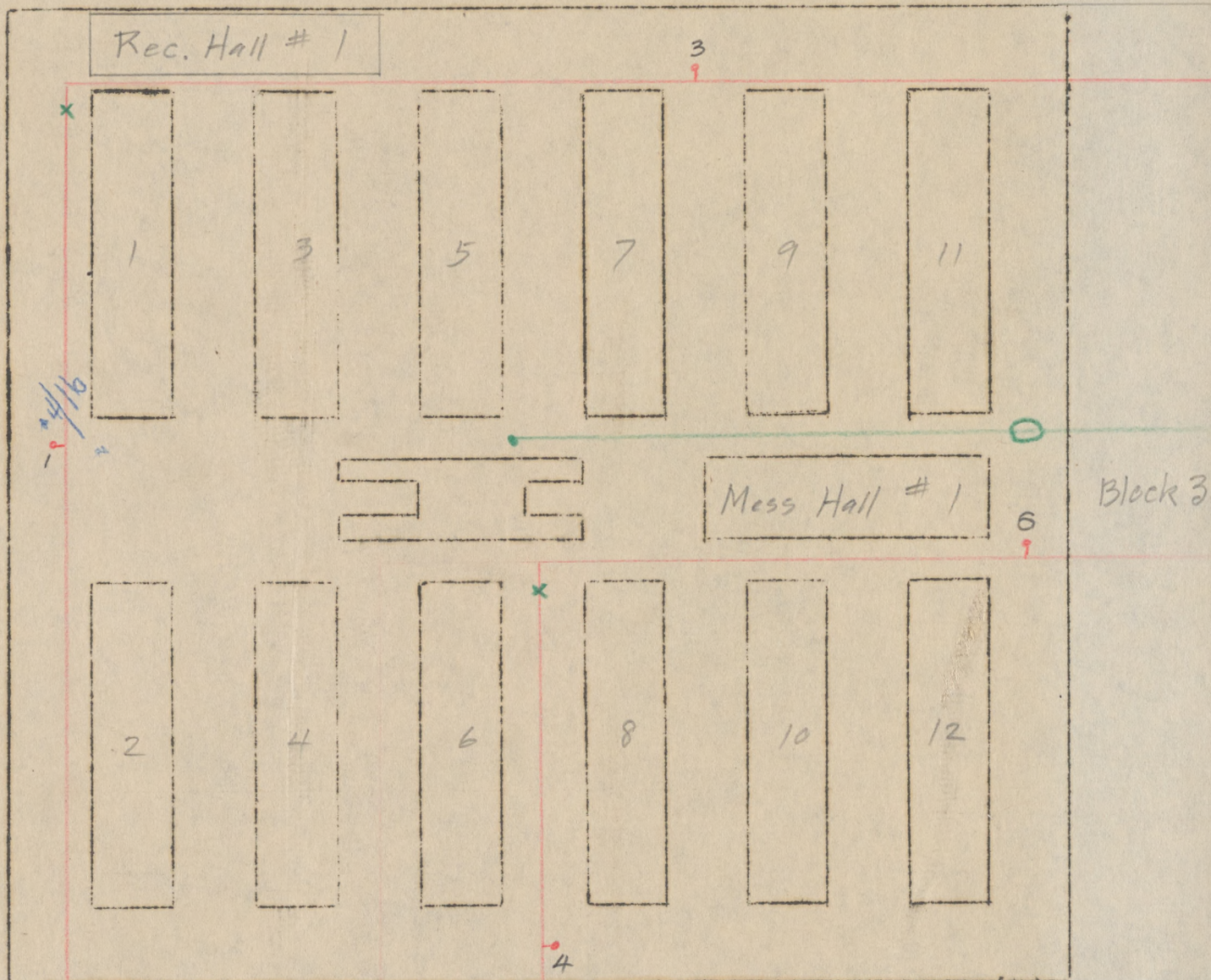
12-26

\*BLOCK 1 ENLARGED





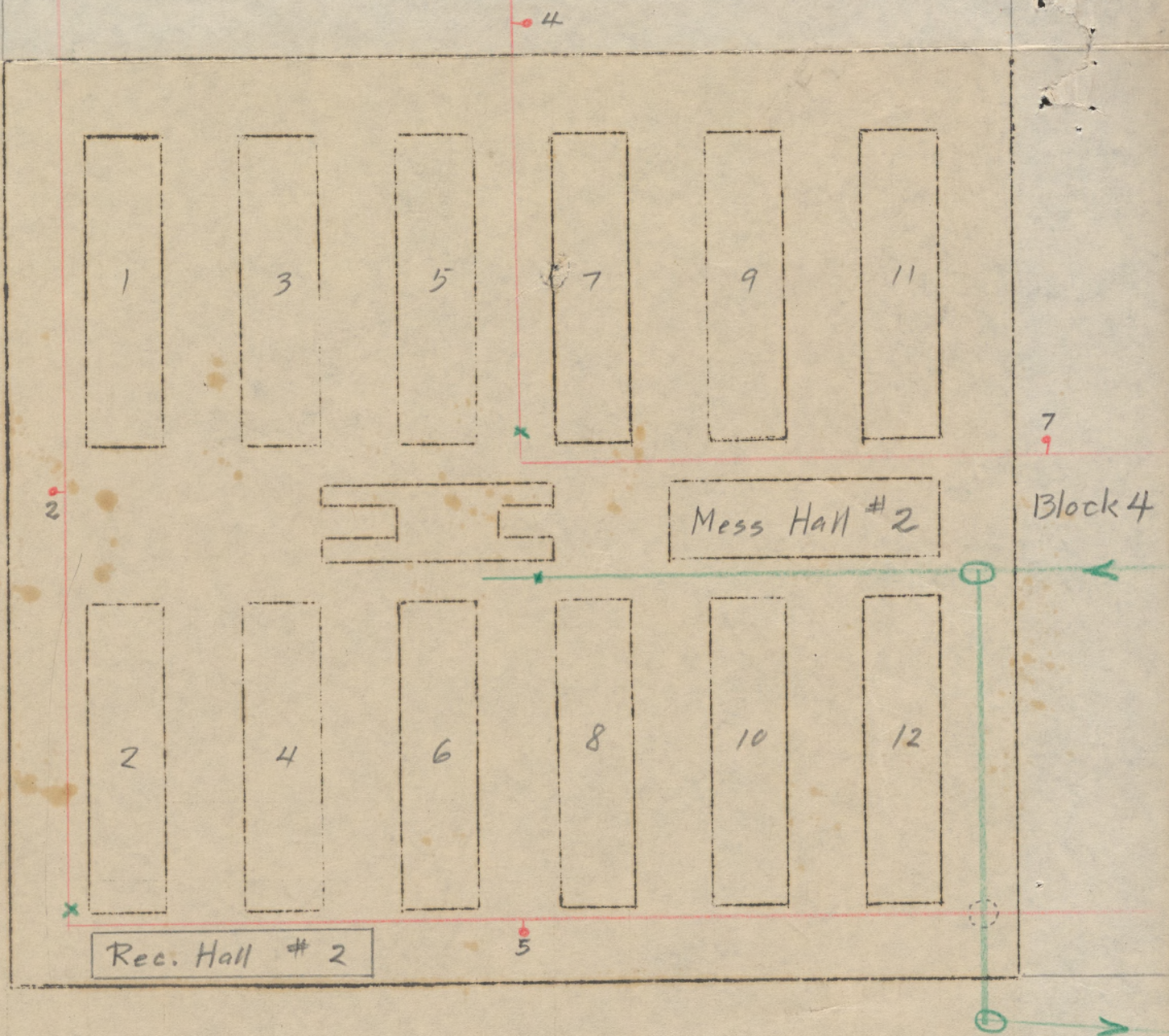
Block 1





Block 1

Block 3



Block 2



Block 3

Rec. Hall # 3

3

5

7

9

11

Block 1

Mess Hall #3

Block 5

2

4

6

8

10

12

## Block 2

## Block 4

Block 6

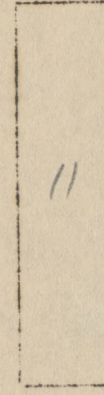
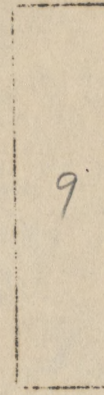
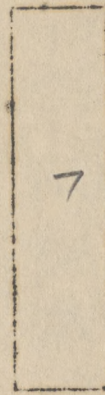
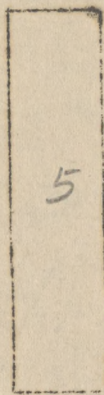
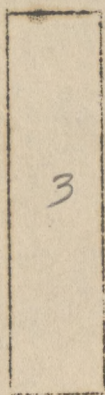
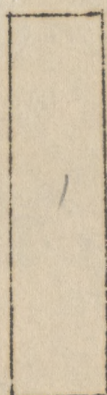


Block 1

Block 3

Block 5

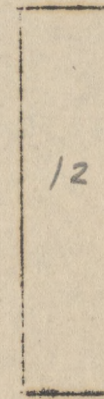
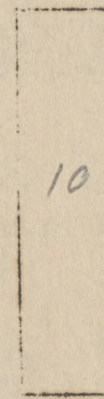
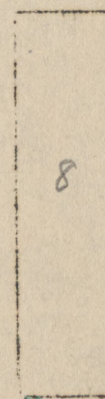
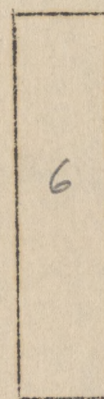
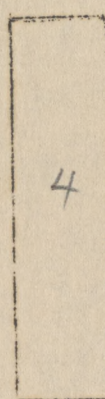
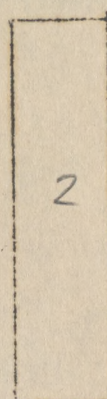
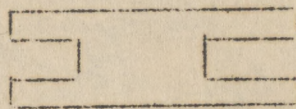
9



Block 2

7

Mess Hall #4



Block 6

12

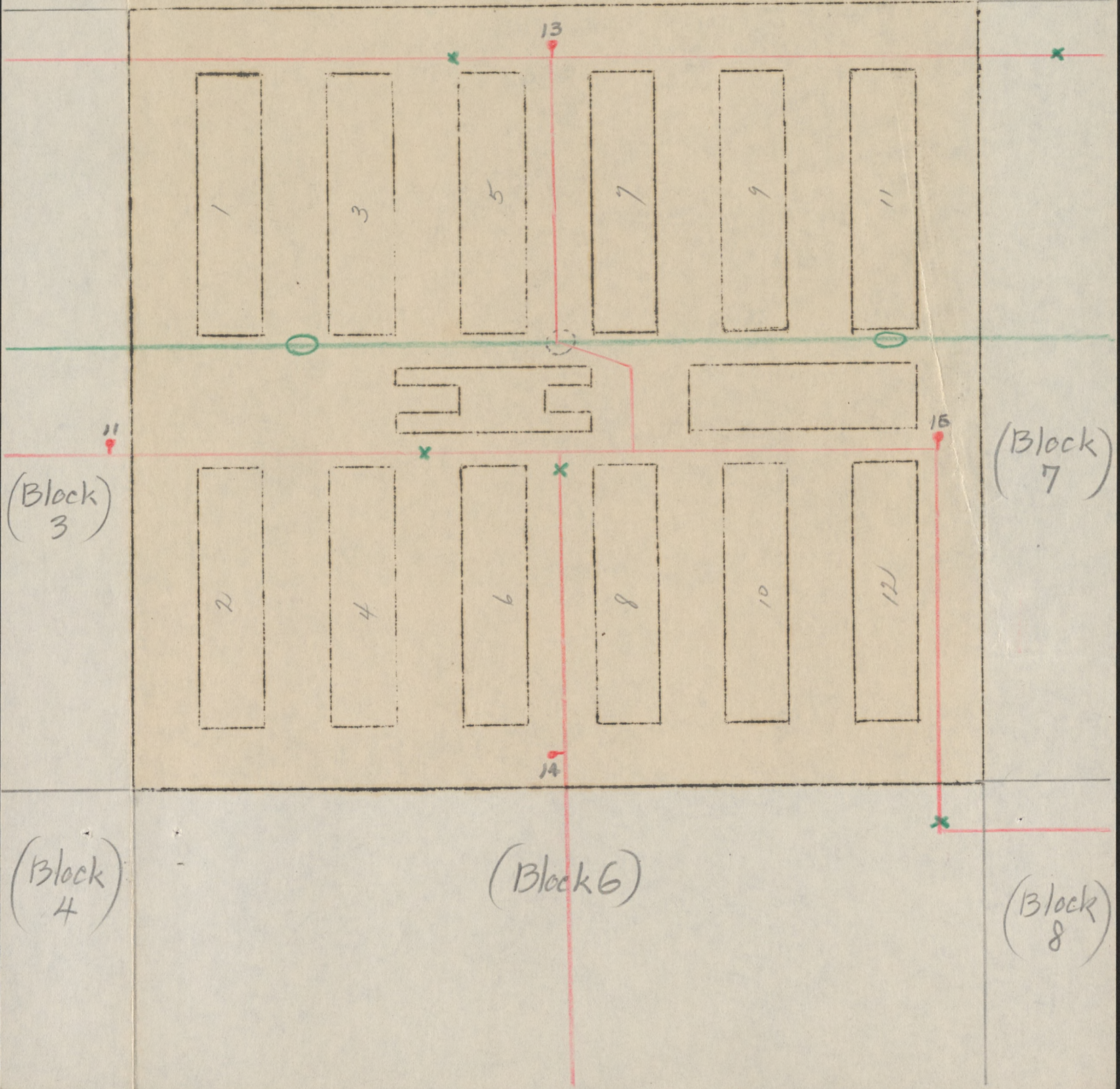
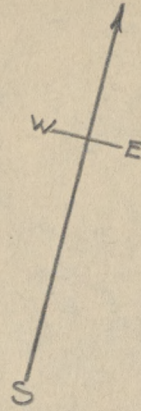
10

Rec. Hall #4

Block 4



Block 5

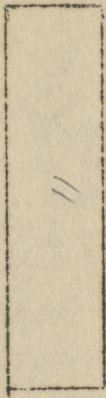
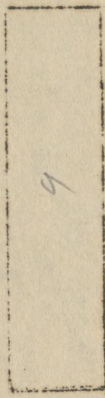
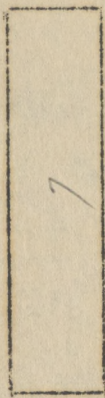
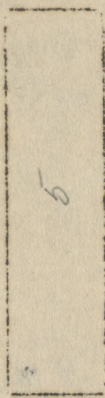
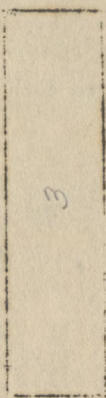
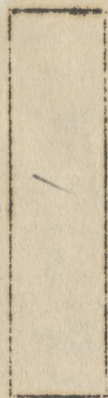




(Block 3)

(Block 5)

(Block 7)



14

x

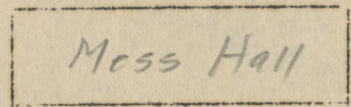
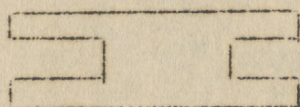
x

17

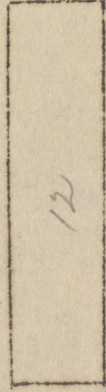
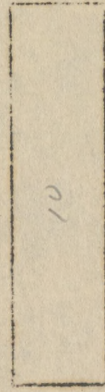
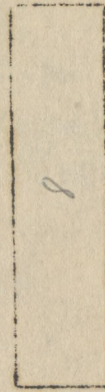
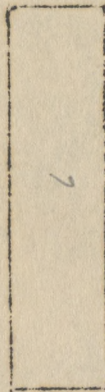
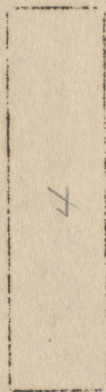
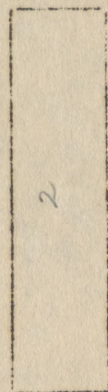
x

(Block 4)

12

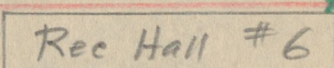


(Block 8)



3/1

15

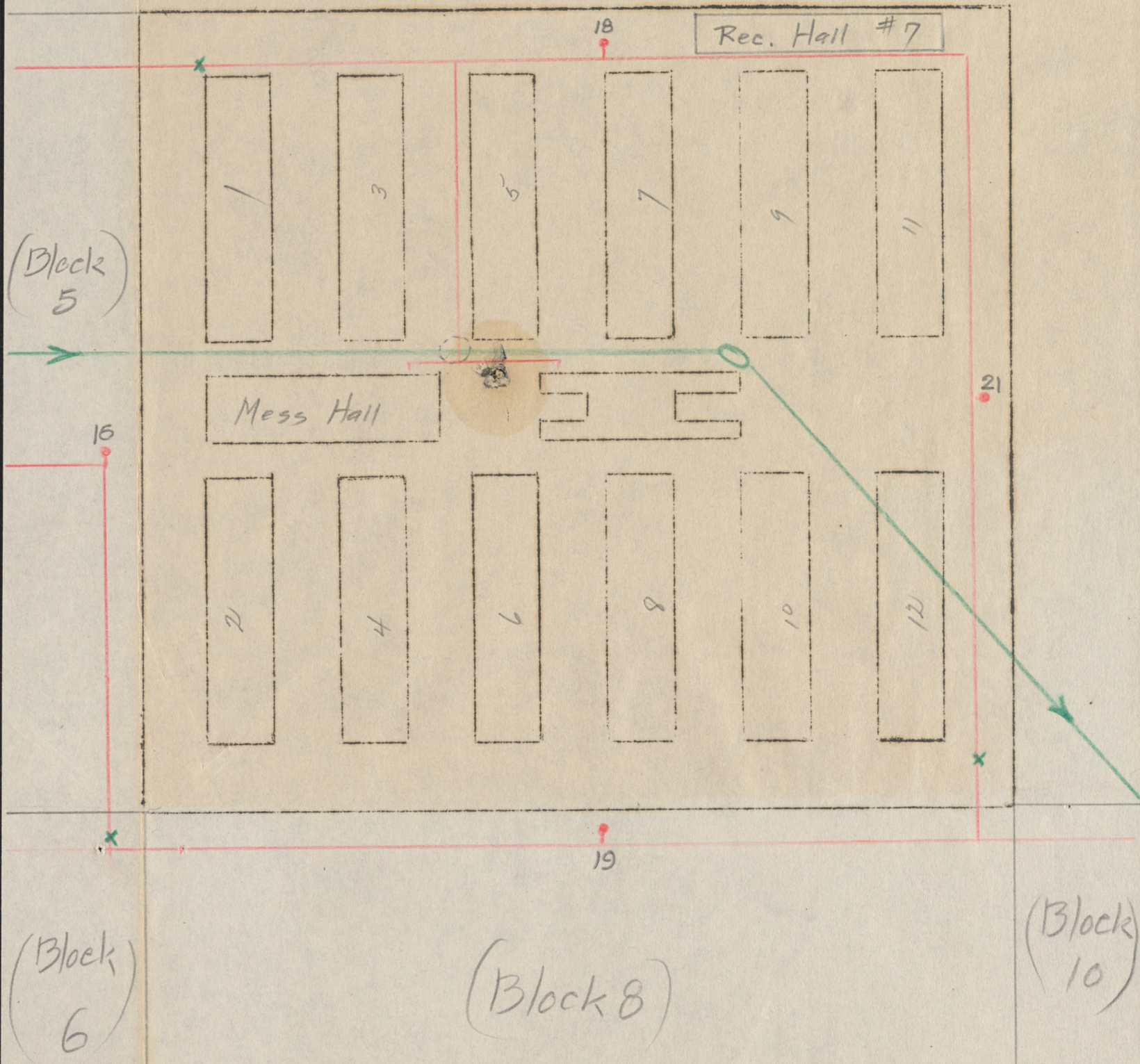
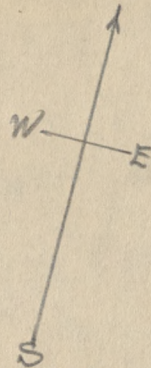


Block 6





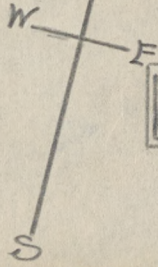
Block 7





(Block 5)

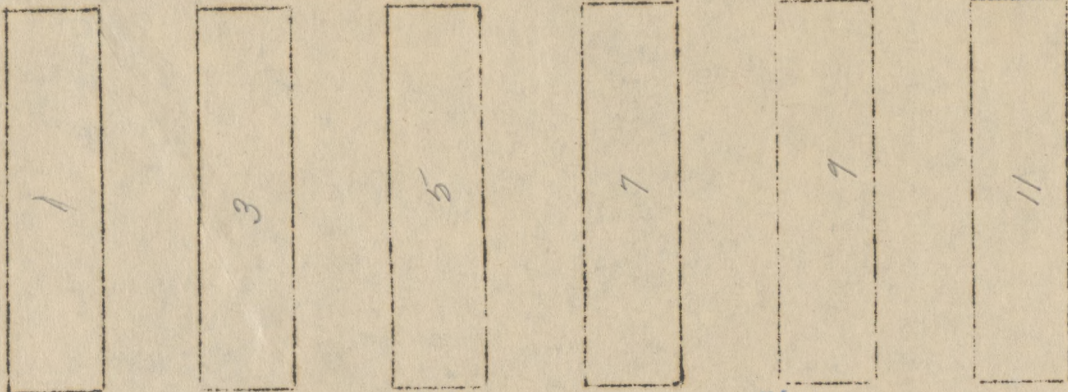
(Block 7)



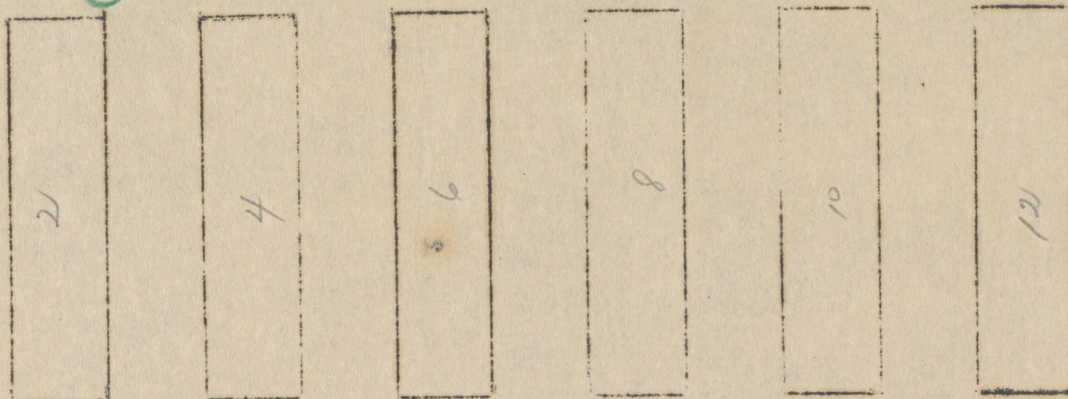
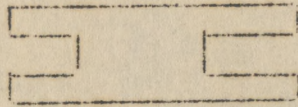
Block 8

(Block 6)

(Block 10)



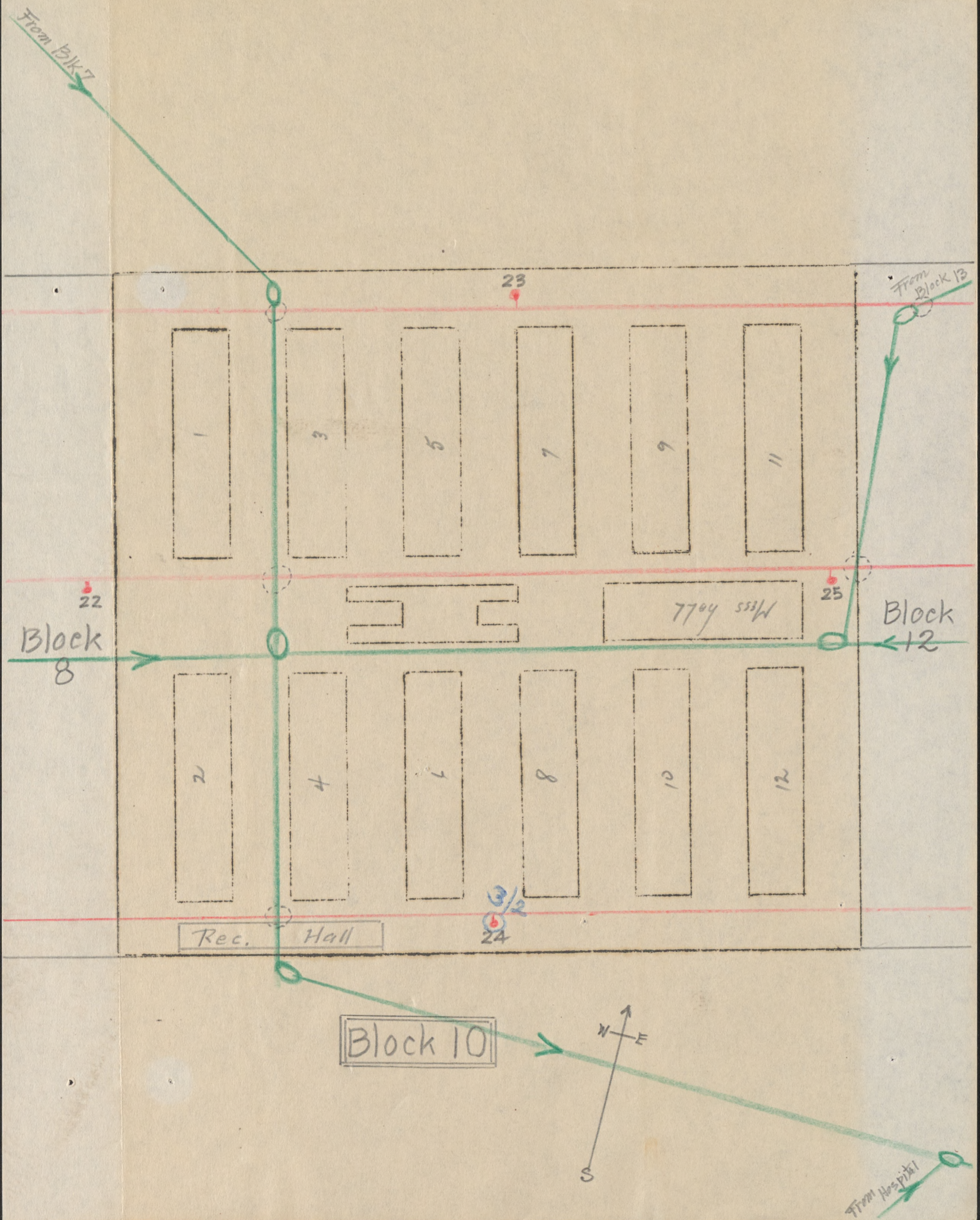
Mess Hall



Rec Hall # 8

8







To BIK13  
Manhole

Block  
13

26

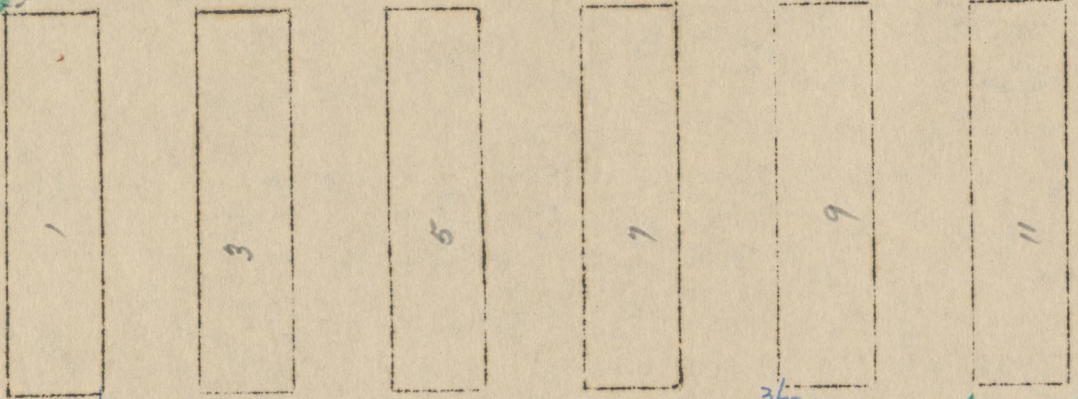
25

29

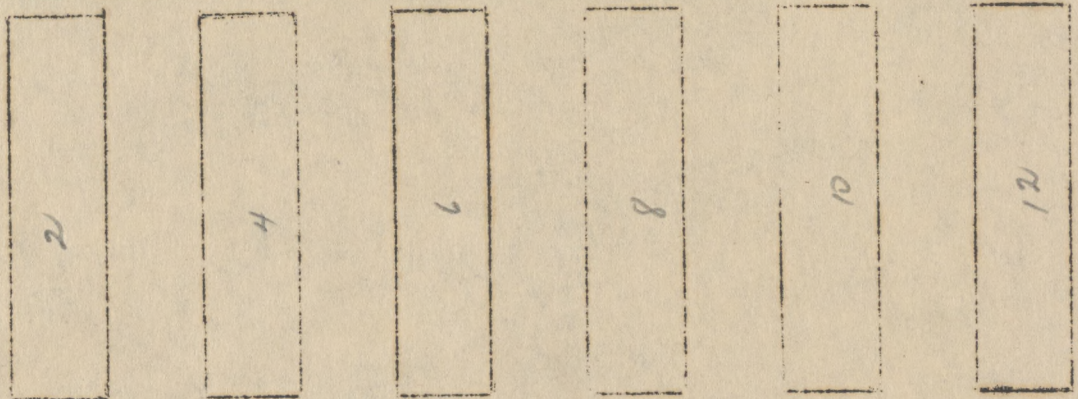
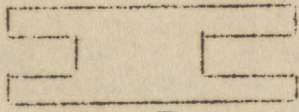
27

Block  
10

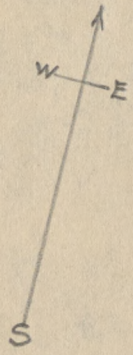
Block  
14



Mess hall



Rec. Hall

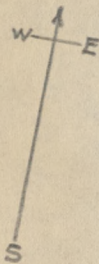


Block 12

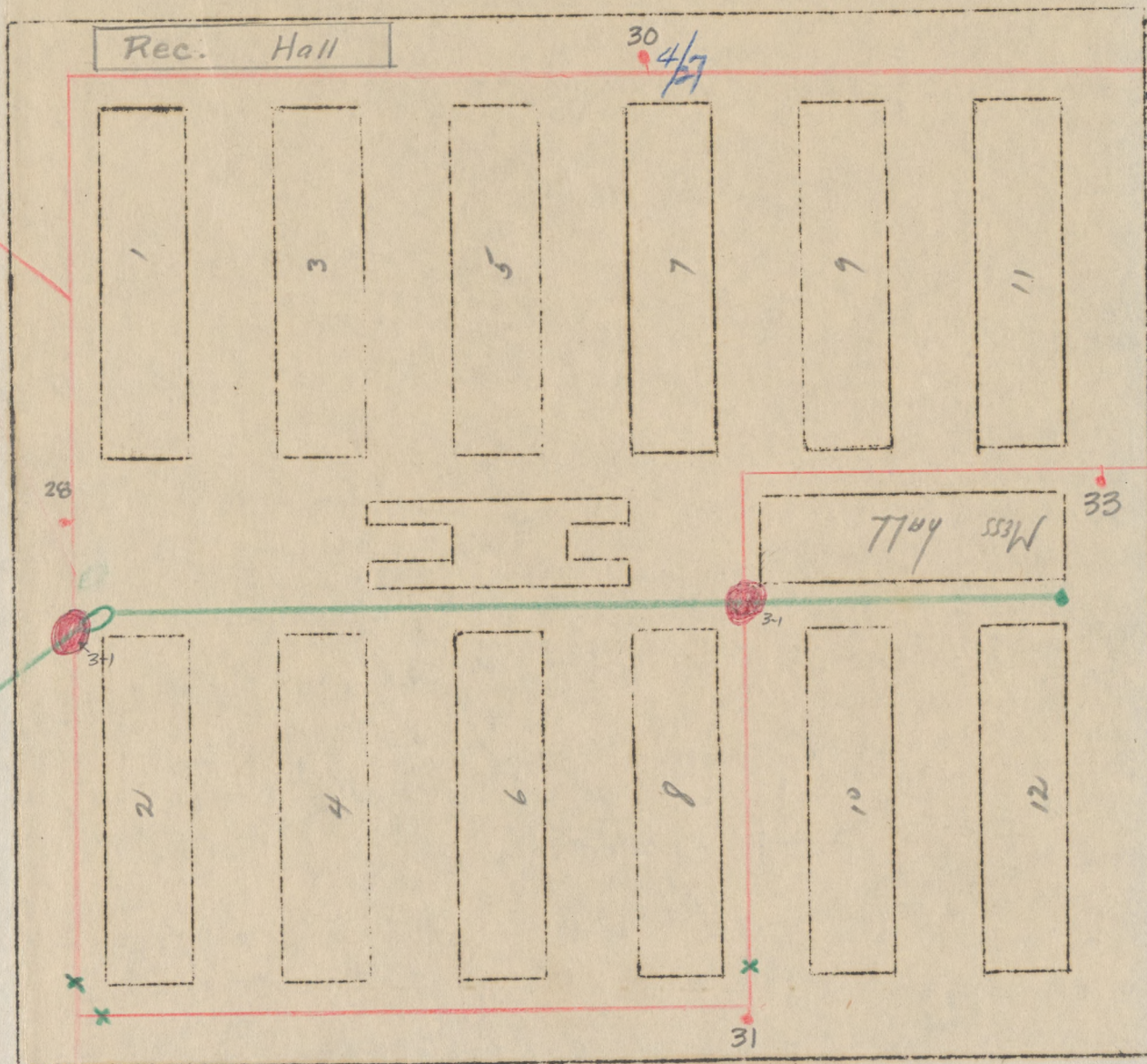
12" water main to tank



# Block 13



Well N°2

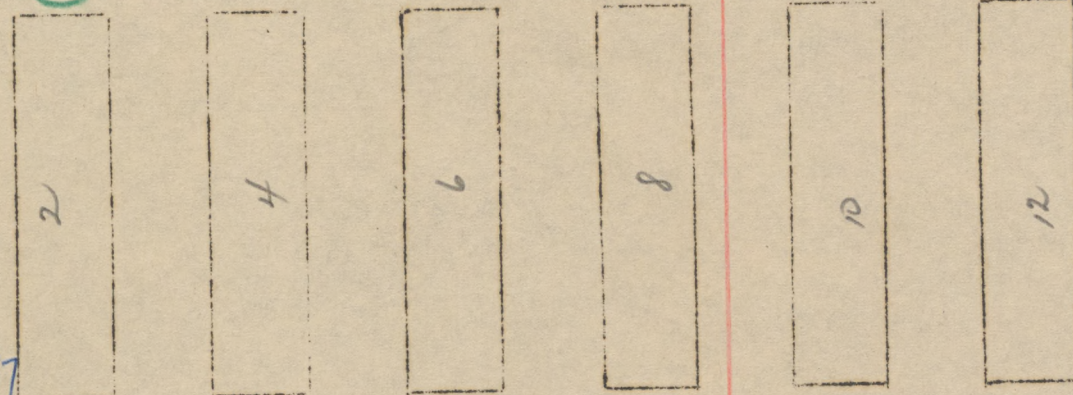
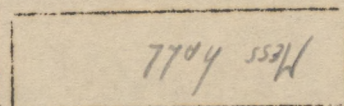
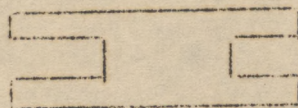
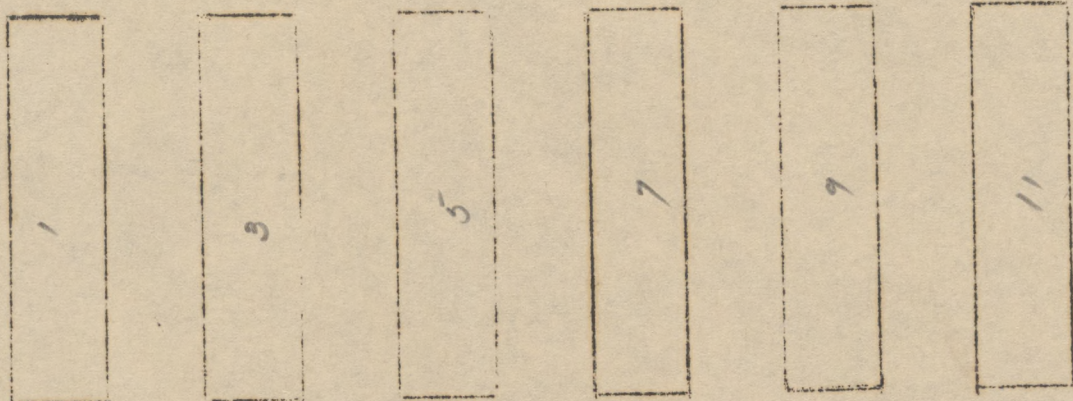




Block 13

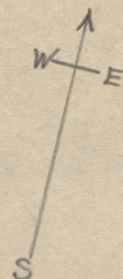
Block 16

Block 12



Rec. Hall

Block 14



3/17

4/28

4/28

4/28

?

29

32

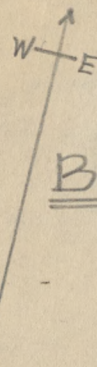
121

121

34



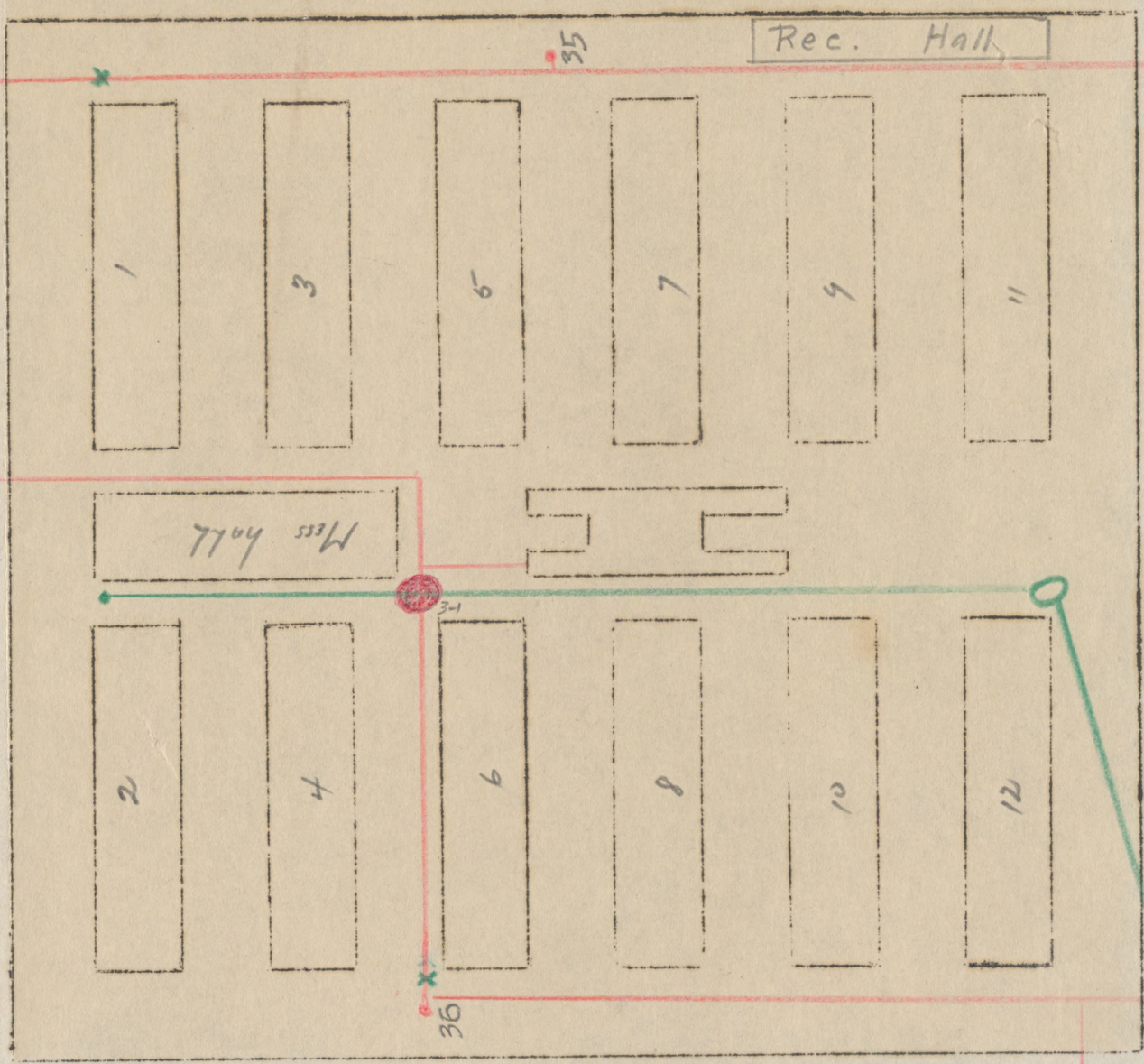
15



Block 15

Block  
13

Block 17

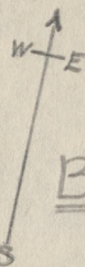


Block 16

to BK17  
Manhole



Block  
13



Block 16

x (Block 15)

Block  
14

121

34

Mess hall

x

39

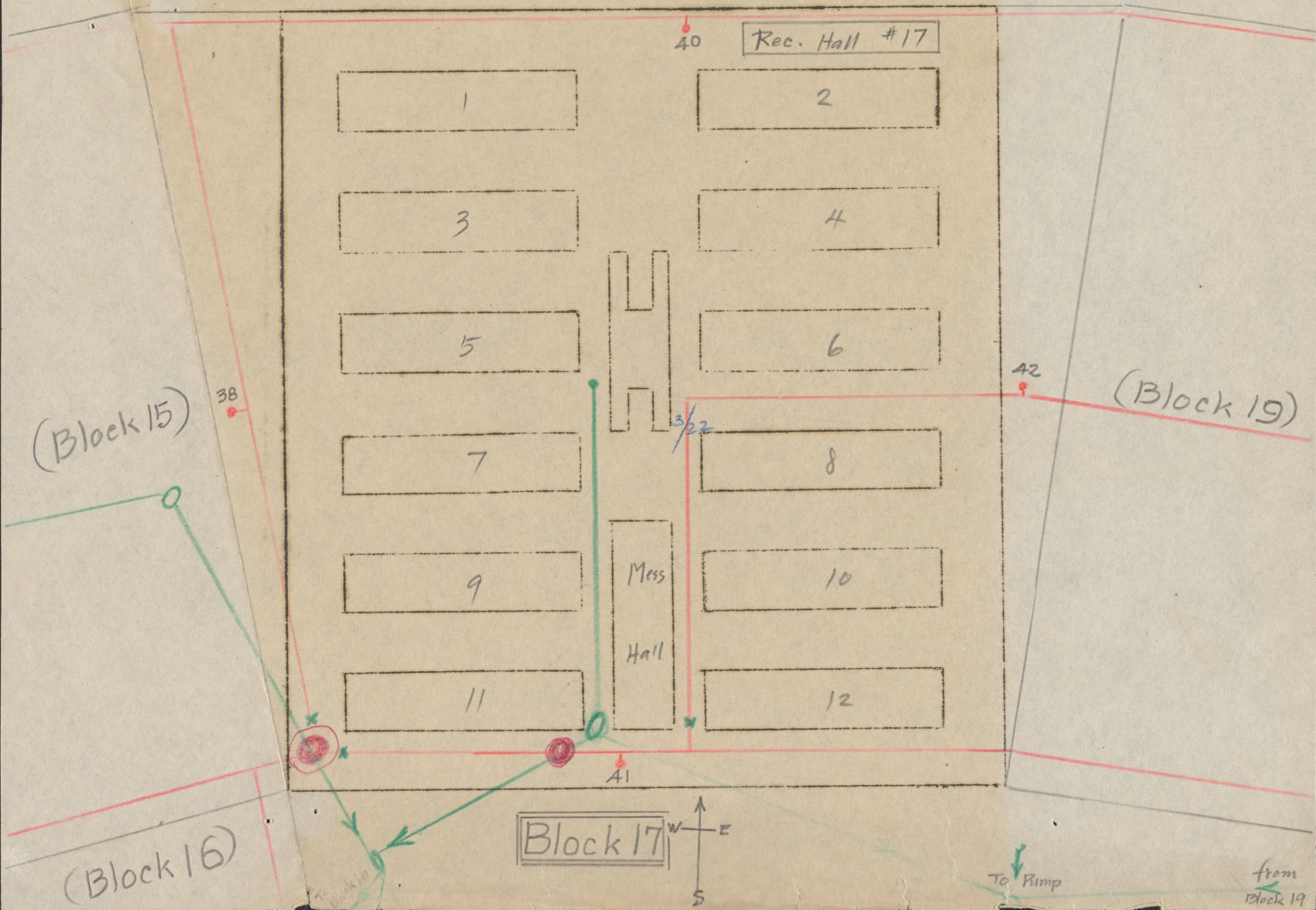
3/3

37

Rec. Hall

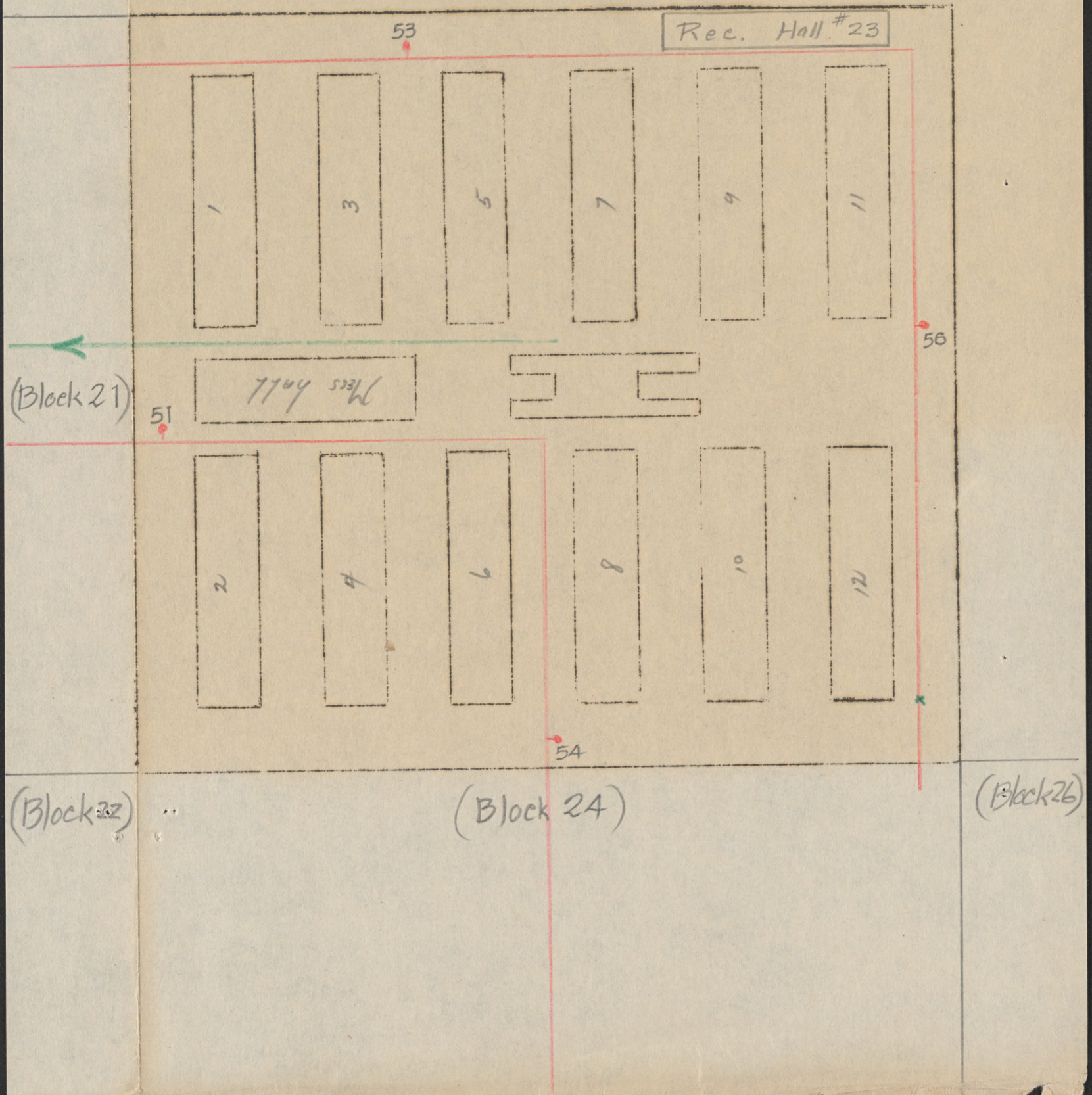
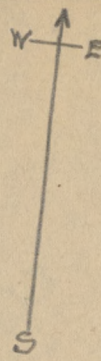
18







Block 23



Rec. Hall #23

53

56

54

55

1

3

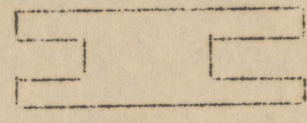
5

7

9

11

Mess Hall



2

4

6

8

10

12

(Block 21)

(Block 22)

(Block 24)

(Block 26)

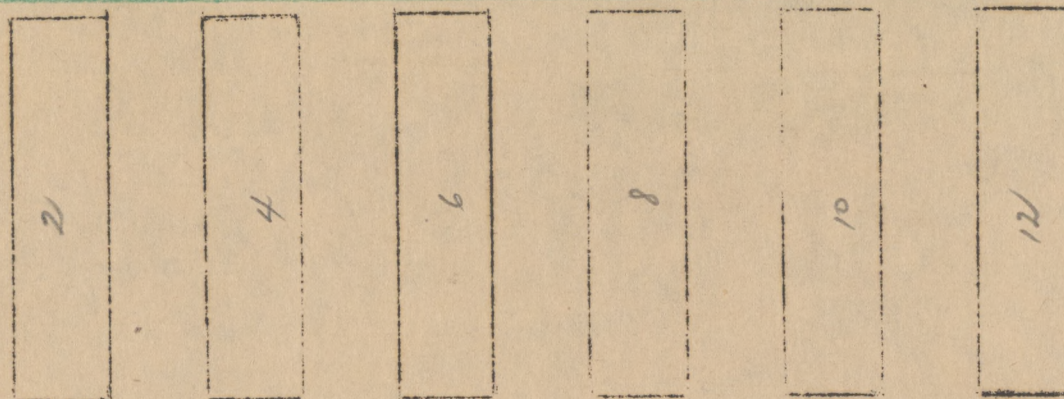
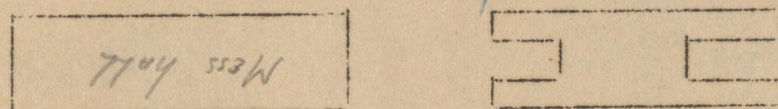
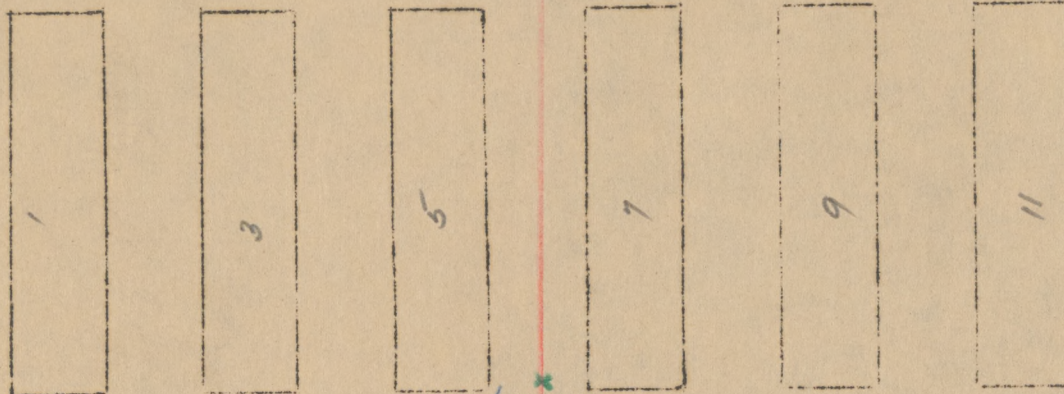


(Block  
21)

(Block 23)

(Block  
22)

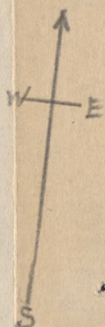
(Block  
26)



55

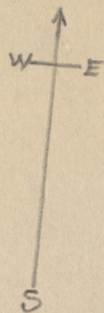
Rec. Hall #24

Block 24



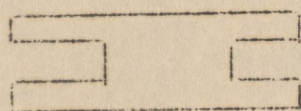


(Block  
23)



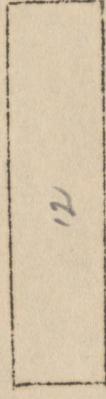
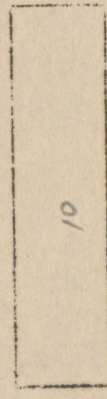
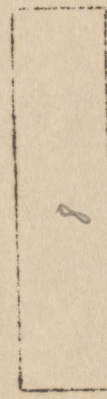
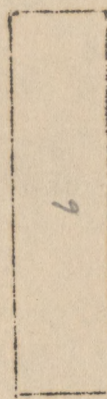
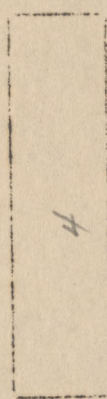
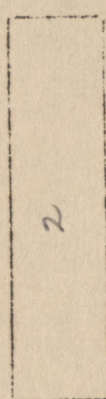
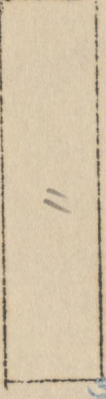
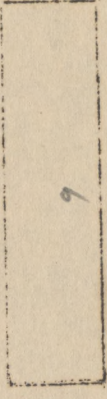
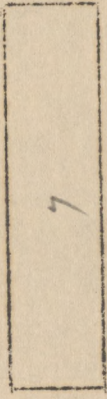
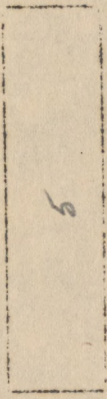
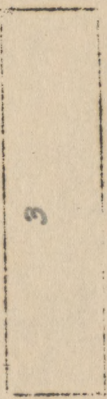
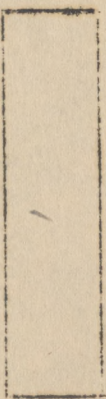
Block 26

(Block  
24)



7104 ss3W

(Block  
28)



Rec. Hall # 26

58

59

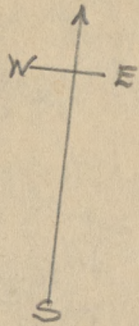
60

4/2

4/2 3/2

4/2 3/2





Block 28

Well  
#4

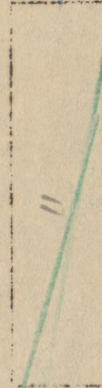
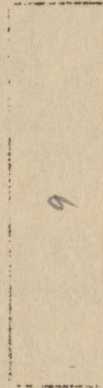
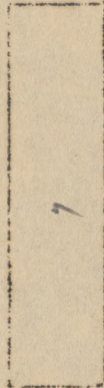
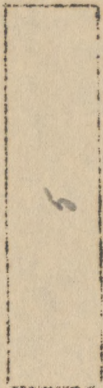
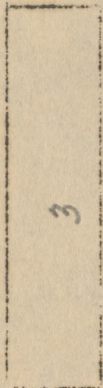
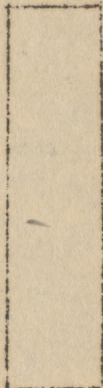
Fire  
Station  
#2

4/12  
4/2

3/24

61

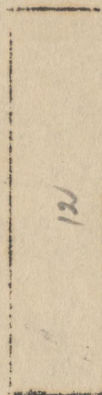
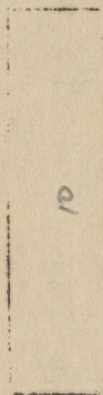
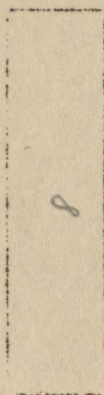
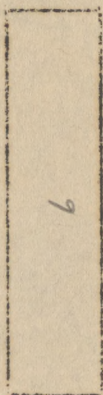
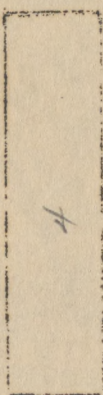
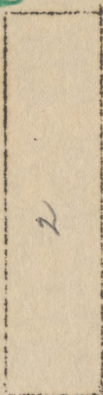
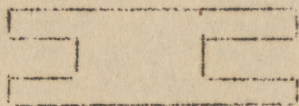
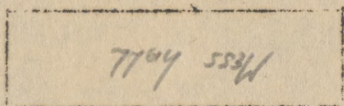
3/3



3/2

63

(Block  
26)



62

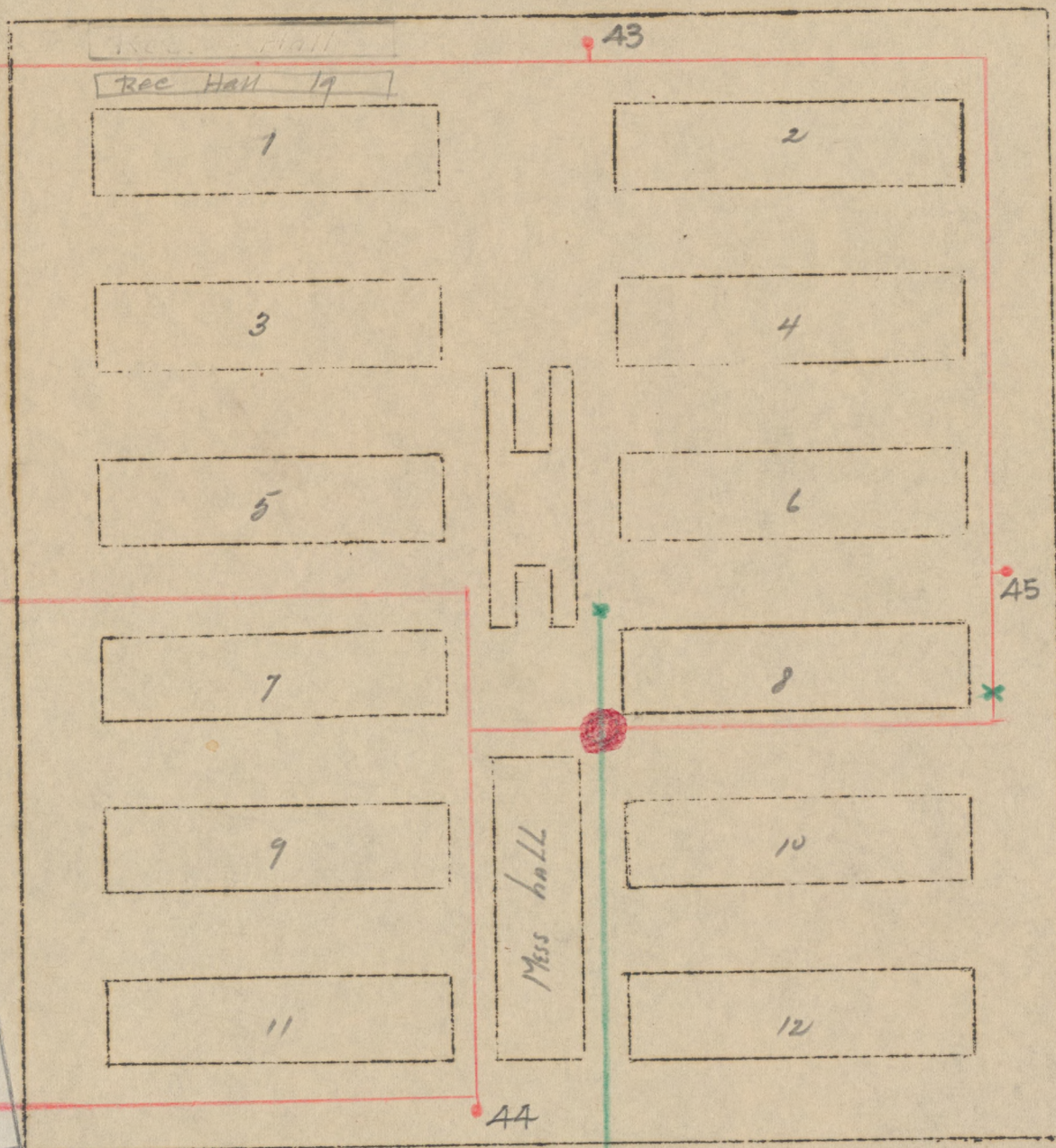
Rec. Hall #28

(Block  
30)



Rec Hall 17

(Block 17)

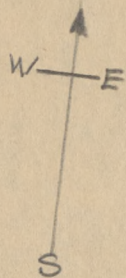


W E

S

Block 19





Block 21

Rec. Hall #21

48

Well N°3

46

(Block 23)

Mess hall

2

4

6

8

10

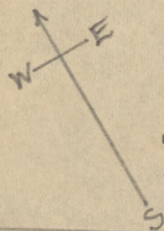
12

49

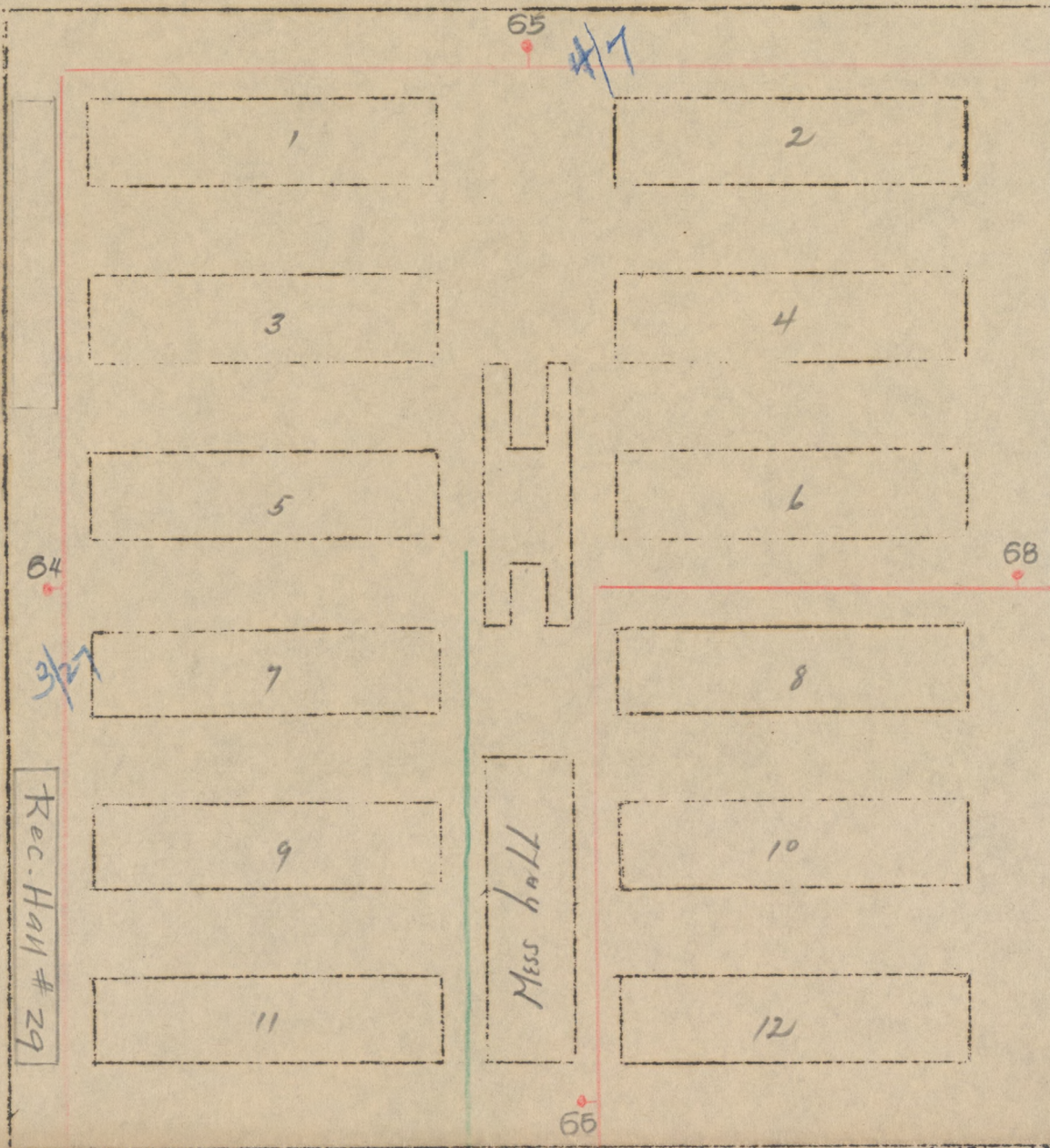
(Block 22)

(Block 24)





Block 29

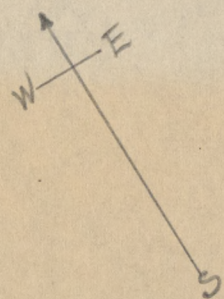


(Block 30)

(Block 31)

(Block 32)





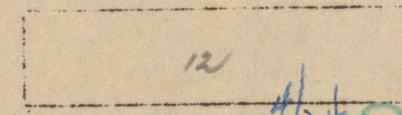
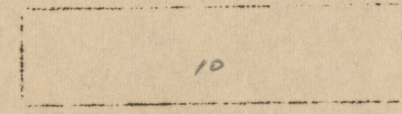
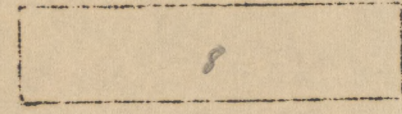
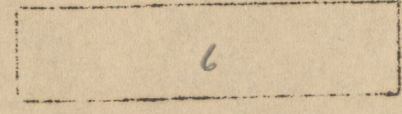
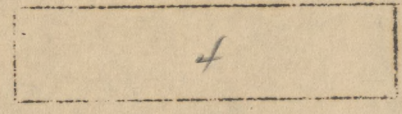
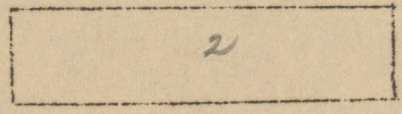
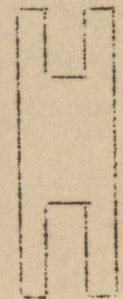
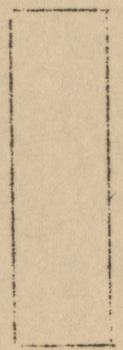
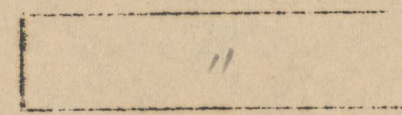
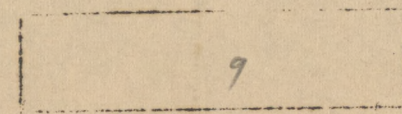
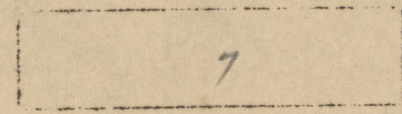
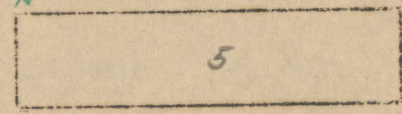
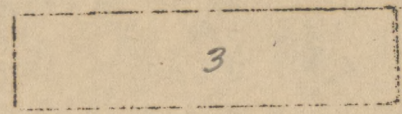
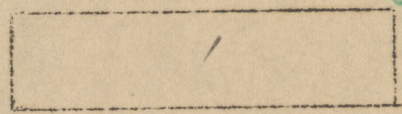
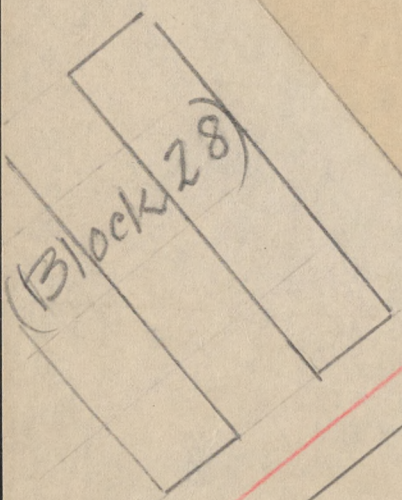
Block 30

Rec. Hall # 30

(Block 29)

(Block 31)

(Block 32)



4/19

67

69

4/24



31

W E

Block 31

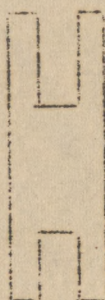
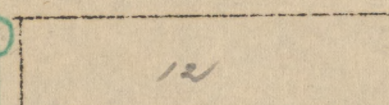
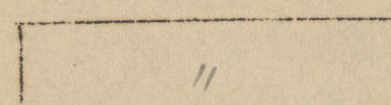
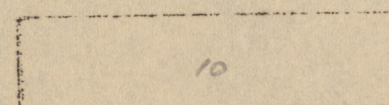
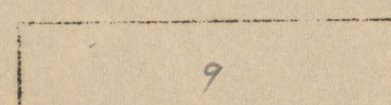
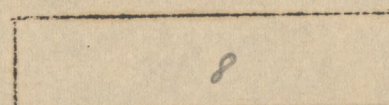
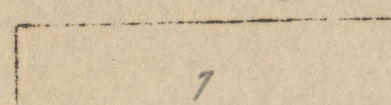
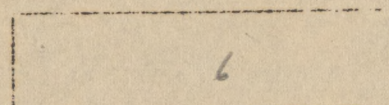
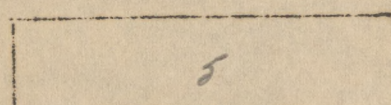
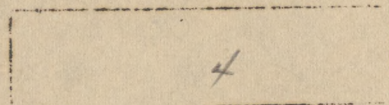
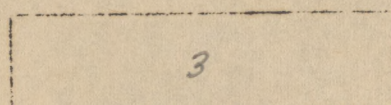
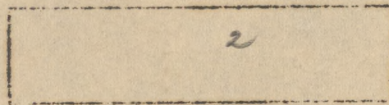
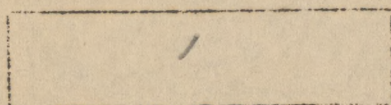
(Block 29)

(Block 30)

(Block 32)

X

70



Mess hall

71

0

73

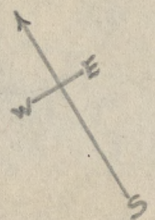
Rec. Hall # 31

X

dispensary +  
Chapel



(Block 29)



Block 32

(Block 31)

1

2

3

4

5

6

7

8

9

10

11

12

Mess hall

Rec. Hall #32

(Block 30)

(Block 34)

32

72

3/3

3/3

74



(Block 32)

to Manhole  
at Dispensary

Block 34

75

Mess hall 34

3/25

 $\frac{27}{23}$ 

76

Rec. Hall # 34

3/9

3/9

3/9

Block 36

Block 35



(Block 34)

Block 35

(Block 36)

(Block 38)

(Block 37)

Water	Well
Tower	#1

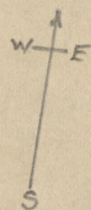
~~4/5 4/26 4/26~~

Rec. Hall # 35

79

3/26



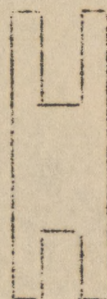
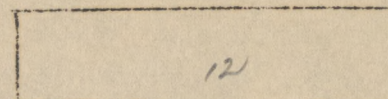
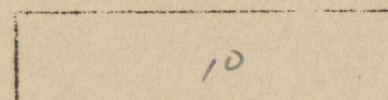
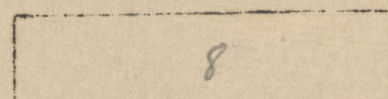
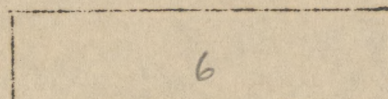
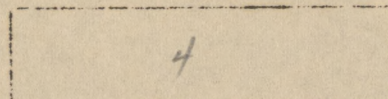
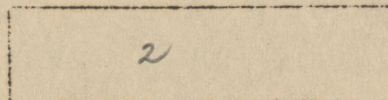


Block 36

Rec. Hall #36

3/16

81



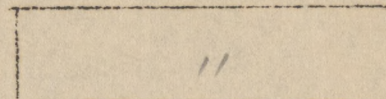
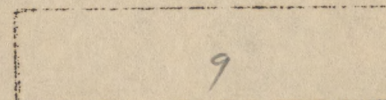
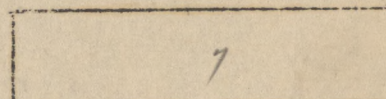
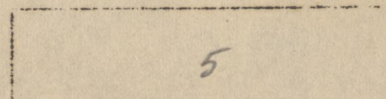
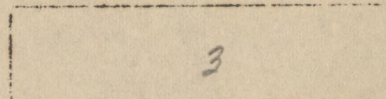
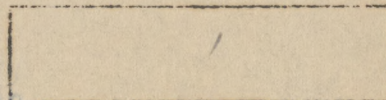
Mess hall

(Block 34)

78

3/6

x



3/23

x

80

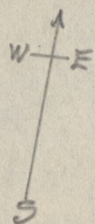
(Block 35)

(Block 38)

(Block 37)

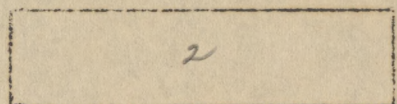


(Block 36)

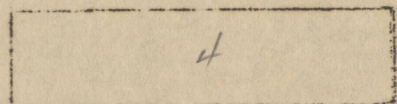


Block 37

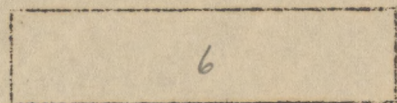
(Block 35)



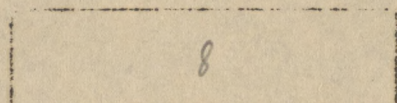
2



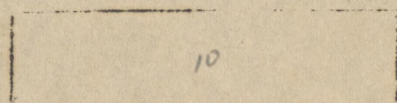
4



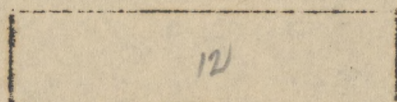
6



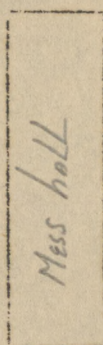
8



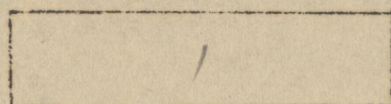
10



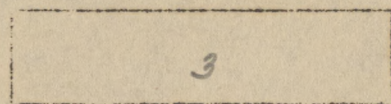
12



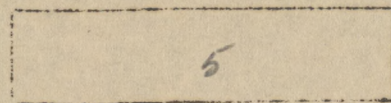
Mess hall



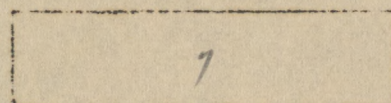
1



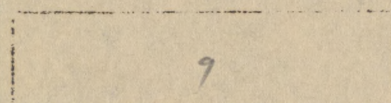
3



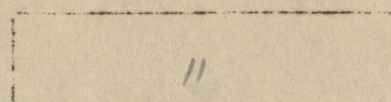
5



7



9



11

(Block 38)

84

Rec. Hall # 37

87

(Block 40)

(Block 39)

37



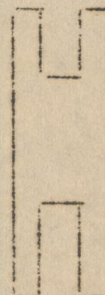
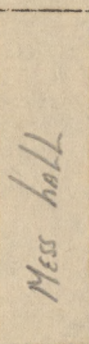
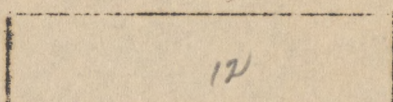
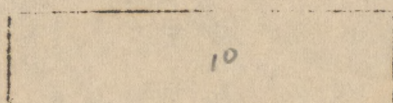
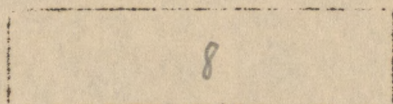
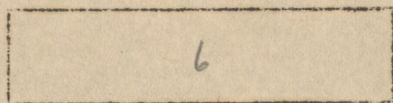
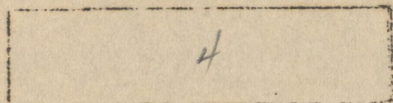
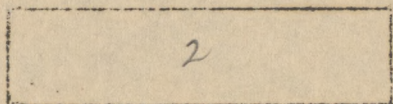


Block 38

Rec. Hall #38

85

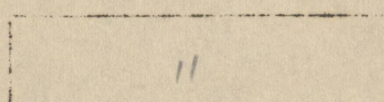
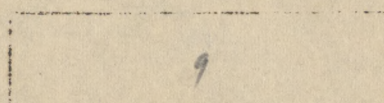
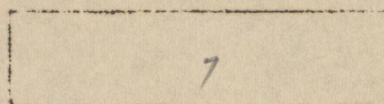
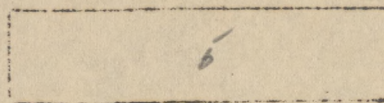
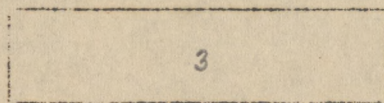
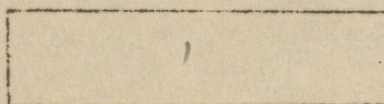
x



83

85

(Block 36)



(Block 40)

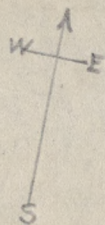
<sup>38</sup>  
(Block 35)

(Block 37)

(Block 41)



(Block 38)



Block 39

(Block 40) 90

(Block 42)

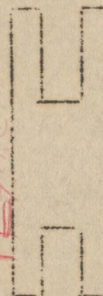
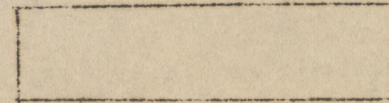
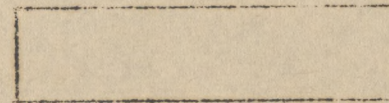
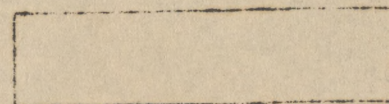
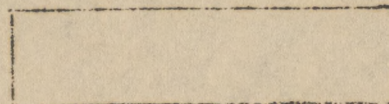
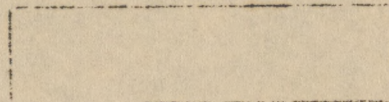
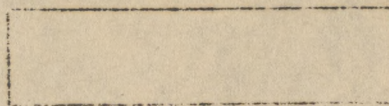
(Block 37)

87

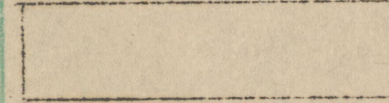
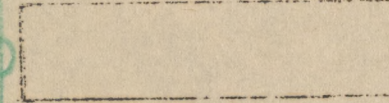
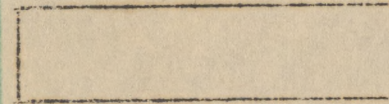
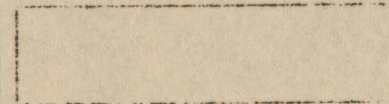
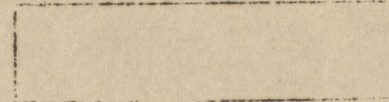
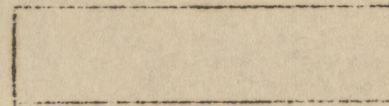
17/100

92

(Block 41)



Mess Hall #39

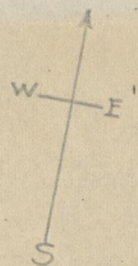


Rec. Hall #39

89

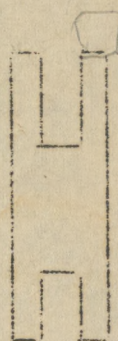
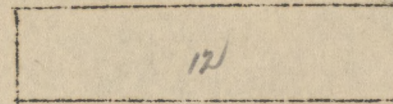
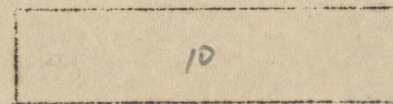
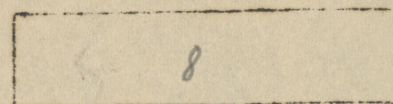
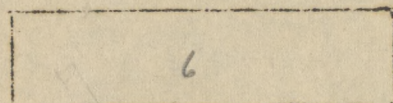
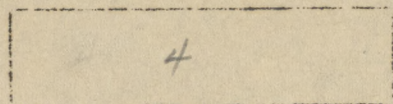
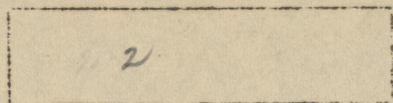
39



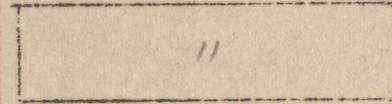
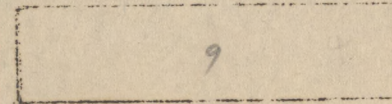
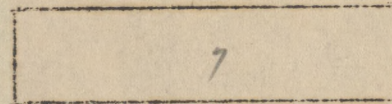
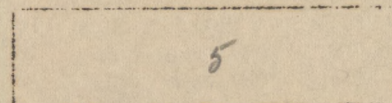
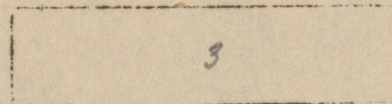
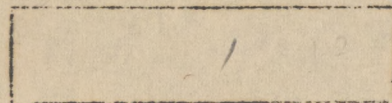


Block 40

Rec. Hall #40



Mess hall



(Block 38)

(Block 37)

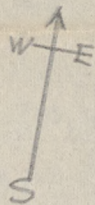
(Block 39)

(Block 42)

(Block 41)

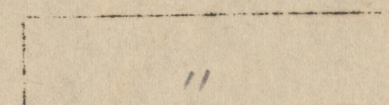
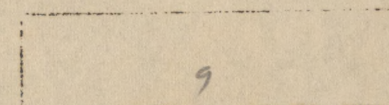
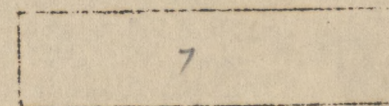
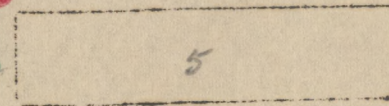
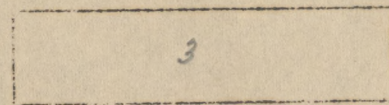
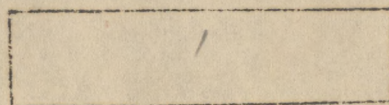
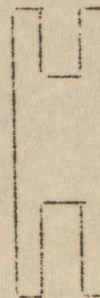
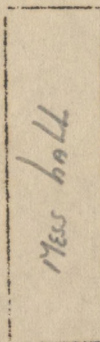
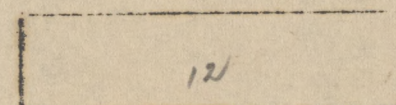
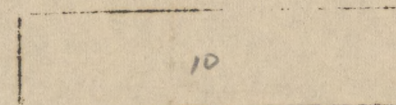
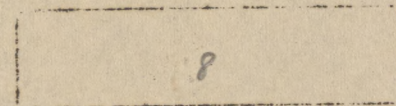
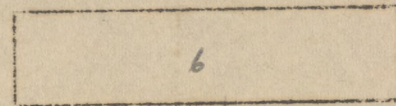
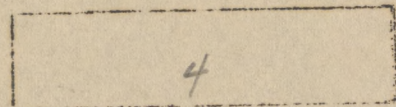
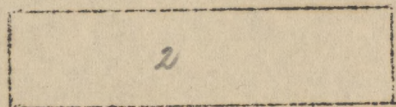


(Block 40)



Block 41

(Block 39)



95

92

94

97

Block 42

(Block 44)

Rec. Hall #41

41

41



↑ (Block 40)

(Block 39)

(Block 41)

Block 42

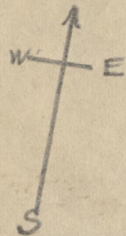
Rec. Hall #42

Block 44



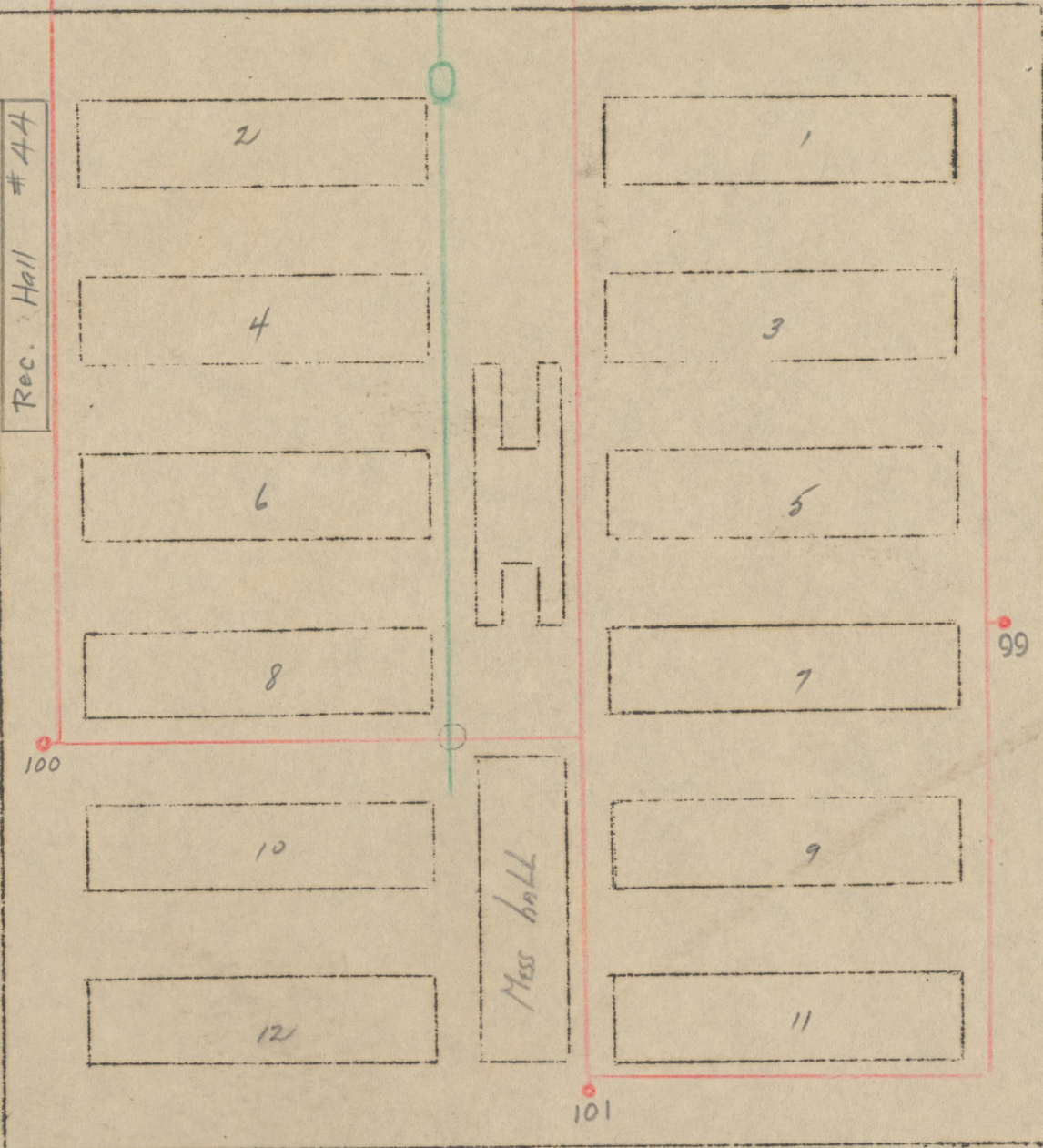
Block 42

Block 41



Block 44

Rec. Hall #44





# MINIDOKA RELOCATION CENTER ADMINISTRATIVE MANAGEMENT DIVISION

## ASSISTANT PROJECT DIRECTOR'S OFFICE

Assistant Project Director CAF-13 5230 J. H. Nichols  
Secretary CAF-4 2100 E. Shellmoe

### SUPPLY SECTION

Supply Officer CAF-12 5180 W. H. Mann  
Clerk-Stenographer CAF-4 2100 W. Anderson

### FINANCE SECTION

Finance Officer CAF-12 5180 C. M. Forrest  
Asst. Finance Officer CAF-11 4300 E. C. Murray  
Clerk-Stenographer CAF-3 1902 L. C. Hampton

### Procurement Unit

Procurement Officer CAF-11 4300 \* K. C. Merrill  
Asst. Procurement Officer CAF-3 1902 W. A. Roden

\*(Detailed to Property Control & Warehousing Unit)

### Property Control & Warehousing Unit

Property and Warehousing Officer CAF-11 4300 S. C. G. Bryan  
Asst. Property and Warehousing Officer CAF-9 3640 \* K. G. Merrill  
Property Officer CAF-7 2980 J. McLenkamp  
Property Clerk (5) CAF-5 2320 A. M. Byrd  
R. E. Northup  
A. Kamholz  
C. D. Toler

Storekeeper CAF-7 2980 C. R. Newbry  
Receiving and Shipping Clk. CAF-6 2650 \*\* R. L. Greenslate  
Assistant Storekeeper (5) CAF-5 2320 A. E. Colwell  
W. S. Phillips  
M. Owens

School Teachers (30) \*\*\* C. E. Gaward  
\*\*\* E. Hill  
\*\*\*\* E. G. Smith  
\*\*\*\* S. H. Rice  
\*\*\*\* O. Thorson  
\*\*\*\* E. F. Sawyer  
\*\*\*\* E. R. Long

\*(Detailed from Procurement Unit)  
\*\* (Detailed to Surplus Property Work)  
\*\*\* (Detailed to Welfare Section)  
\*\*\*\* (Detailed from Education Section)

### Expenditure Analysis Unit

Fiscal Accountant CAF-9 3640 J. E. Fout  
Asst. Fiscal Accountant CAF-7 2980 E. G. Guffey  
Cost Accounting Clerk CAF-5 2320 S. Navin  
Clerk-Typist CAF-3 1902

### Examination Unit

Fiscal Accountant CAF-9 3640 J. V. Brazie  
Asst. Fiscal Accountant CAF-7 2980 C. Engstrom  
Audit Clerk (2) CAF-5 2320 L. J. Musil  
Clerk-Typist (2) CAF-3 1902 \* E. Fida  
Clerk-Stenographer CAF-3 1902 \* A. L. Cross

\*(Detailed to Relocation Division)

### Accounts Unit

Fiscal Accountant CAF-9 3640 E. P. Spiegel  
Asst. Fiscal Accountant CAF-7 2980  
Fiscal Accounting Clerk(2) CAF-5 2320 C. Francis  
Agent-Cashier CAF-6 2650 V. L. Murray  
Clerk-Typist CAF-3 1902 E. Tortell

### STATISTICS SECTION

Statistician P-3 3640 W. Covington  
Assistant Statistician P-2 2980 A. E. Gish  
Statistical Clerk (2) CAF-5 2320 W. Mann  
J. Laird  
\* E. Stillinger

\*(Detailed from Education Section)

### PERSONNEL MANAGEMENT SECTION

Personnel Officer CAF-12 5180 L. W. Folsom  
Personnel Transactions Officer CAF-7 2980 A. R. Lindsay  
Personnel Clerk CAF-4 2100 A. E. Crowson  
Clerk-Typist (10) CAF-3 1902 \* M. W. McVey

\*\*\* V. Martin  
\*\*\* E. Worthington  
\*\*\* D. Rettinghouse  
\*\*\* N. I. Smith  
\*\*\* F. Denny  
\*\*\* P. Henry  
\*\*\* R. Magie

\*(Detailed to Personnel Mgt. Section)  
\*\* (Detailed to Welfare Section)  
\*\*\* (Detailed to Relocation Division)

### Gate Unit

Sr. Gate Clerk CAF-5 2320 J. L. Farrar  
Gate Clerk (4) CAF-3 1902 A. E. Solten  
H. Dutt  
W. F. Barron  
V. C. Howell

### MESS OPERATION SECTION

Chief Project Steward CAF-11 4300 C. A. Wilder  
Project Steward CAF-9 3640 R. R. Richmond  
Storekeeper CAF-7 2980 L. R. Bailey  
Accounting Clerk CAF-5 2320 V. Lohner  
Clerk-Stenographer CAF-4 2100 L. M. Stewart

### OFFICE SERVICES SECTION

Office Manager CAF-6 2320 E. E. Weston  
File Clerk CAF-4 2100 V. P. Rousseau  
Supervising Telephone Operator CAF-3 1902 L. G. Herbold  
Telephone Operator (3) CAF-2 1704 L. Pearson  
G. Richmond  
P. Redmond

## SUMMARY

Section or Unit	No. Authorized	No. Filled	No. Vacant	Detailed TO						Detailed FROM	
				Prop. Cont.	Surp. Prop.	Welf.	Relo.	Pers. Mgt.		Edu.	Proc.
Asst. Proj. Director	2	2									
Supply	2	2									
Procurement	2	2		1							
Postal Serv.	1	1									
Prop. Cont.	15	13	2		3	1				5	1
Finance	3	3									
Exp. Anal.	4	3	1								
Examination	7	5	2				2				
Accounts	6	4	2								
Statistics	4	4								1	
Gate	5	5									
Pers. Mgt.	13	11	2			3	4	1			
Mess Opr.	6	5	1								
Office Serv.	6	6									
Total	76	66	10	1	3	4	6	1		6	1

J. H. NICHOLS  
ASSISTANT PROJECT DIRECTOR

July 25, 1946