

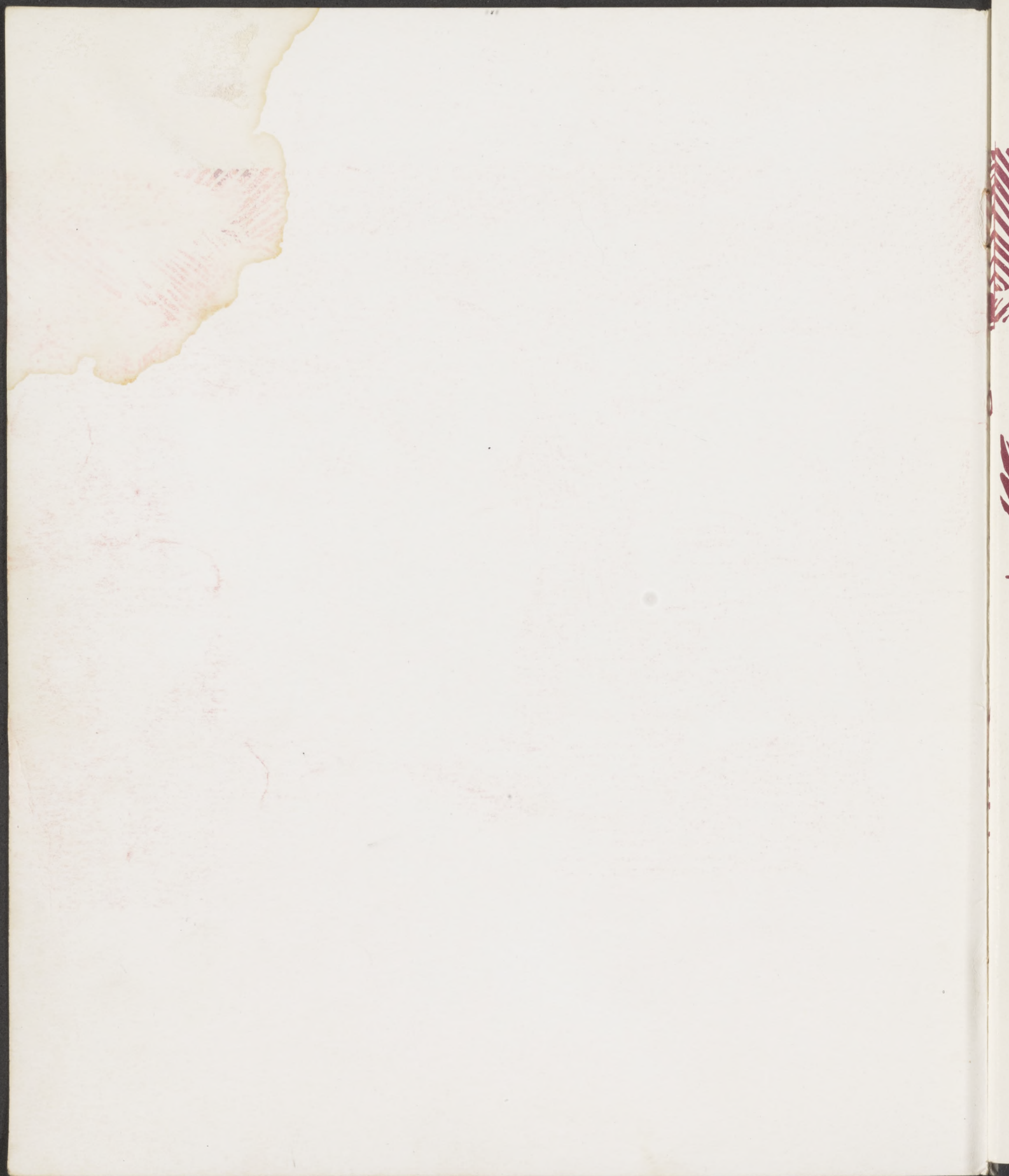
J2.345:1

1 of 3

1943

67/14
C







1900-1901 PUBLIC SCHOOLS

1900-1901

POSTON PUBLIC SCHOOLS
CAMP II

EL CHAPARRAL

1943

CONTENTS

Classes

Activities

Departments & Sports

Acknowledgements

Published by the
Associated Students
of Poston Two High School
Poston, Arizona

IN MEMORIAM



EDWARD B. DAVIS

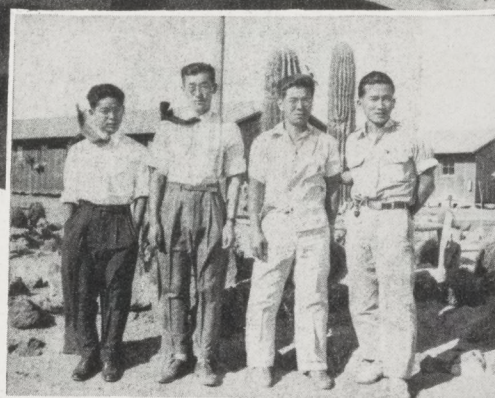
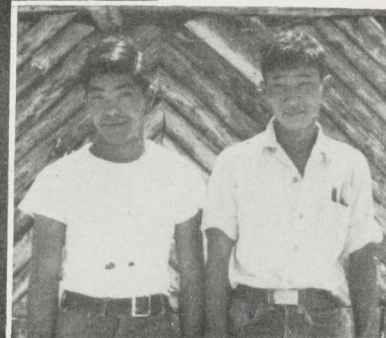
"Give me
A few friends who will love me for what I am—
And keep ever burning, before my vagrant steps,—
The kindly light of hope. And though
Age and infirmity overtake me . . . And I
Come not within sight of the castle of my dreams,
Teach me still to be thankful for life,
And for time's golden moments that are
Good and sweet . . . And may the evening twilight
Find me gentle still."

DEDICATION . . . to the student and faculty volunteers who have unselfishly answered the nation's call to arms:

Yours is the ultimate expression of patriotism, a sacrifice of personal pleasures and desires for the sake of those you leave behind. You demonstrate to the rest of the country that we too are American.

You set an example of loyalty to all Japanese-Americans. You manifest our faith in the ideals for which our flag stands—"one nation, indivisible, with Liberty and Justice for all."

To you, we dedicate, humbly, yet with pride, "El Chaparral" of 1943.





VICE PRINCIPALS

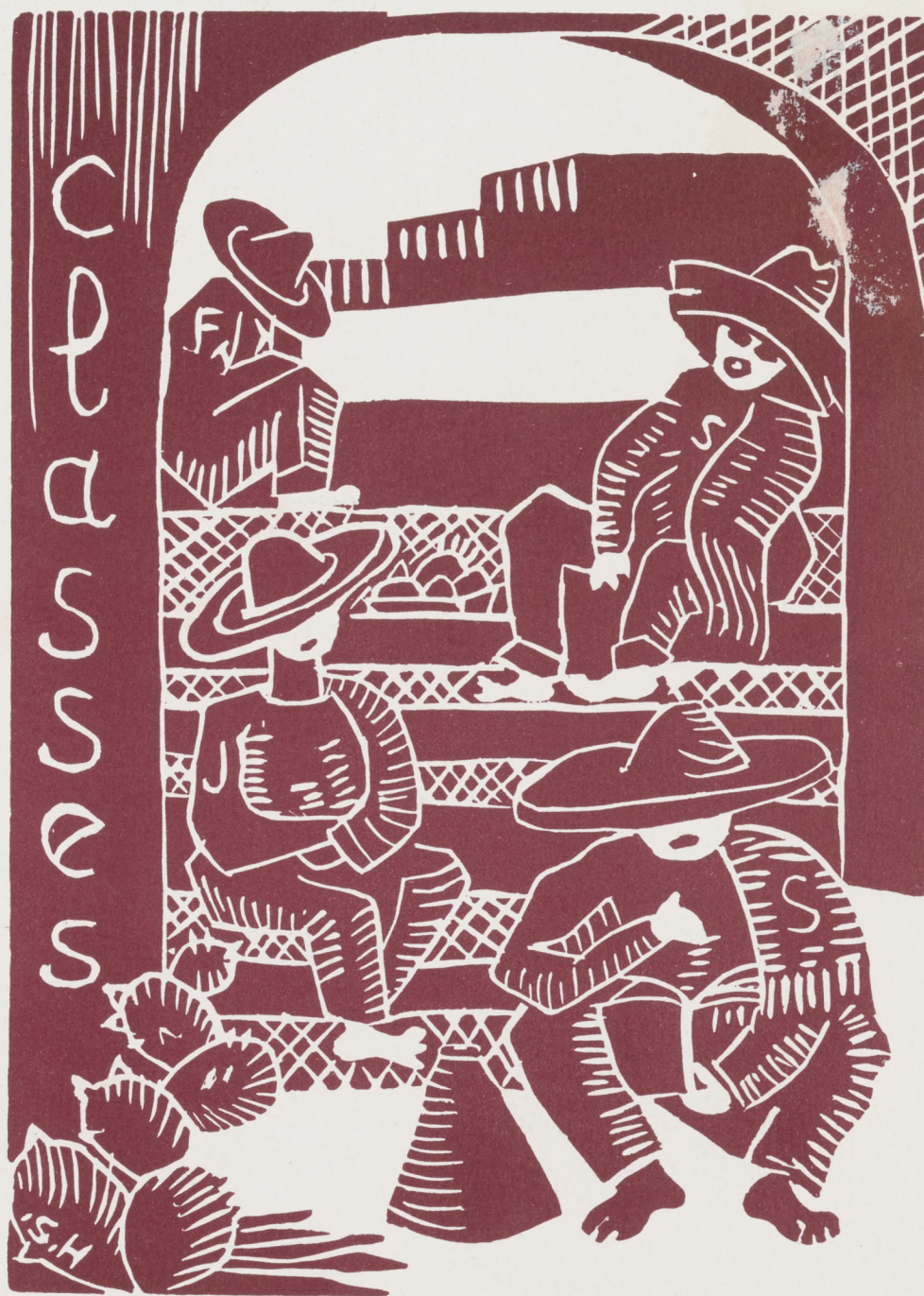
George T. Aihara - - - - - First semester
 Peter S. Aoki - - - - - Second semester

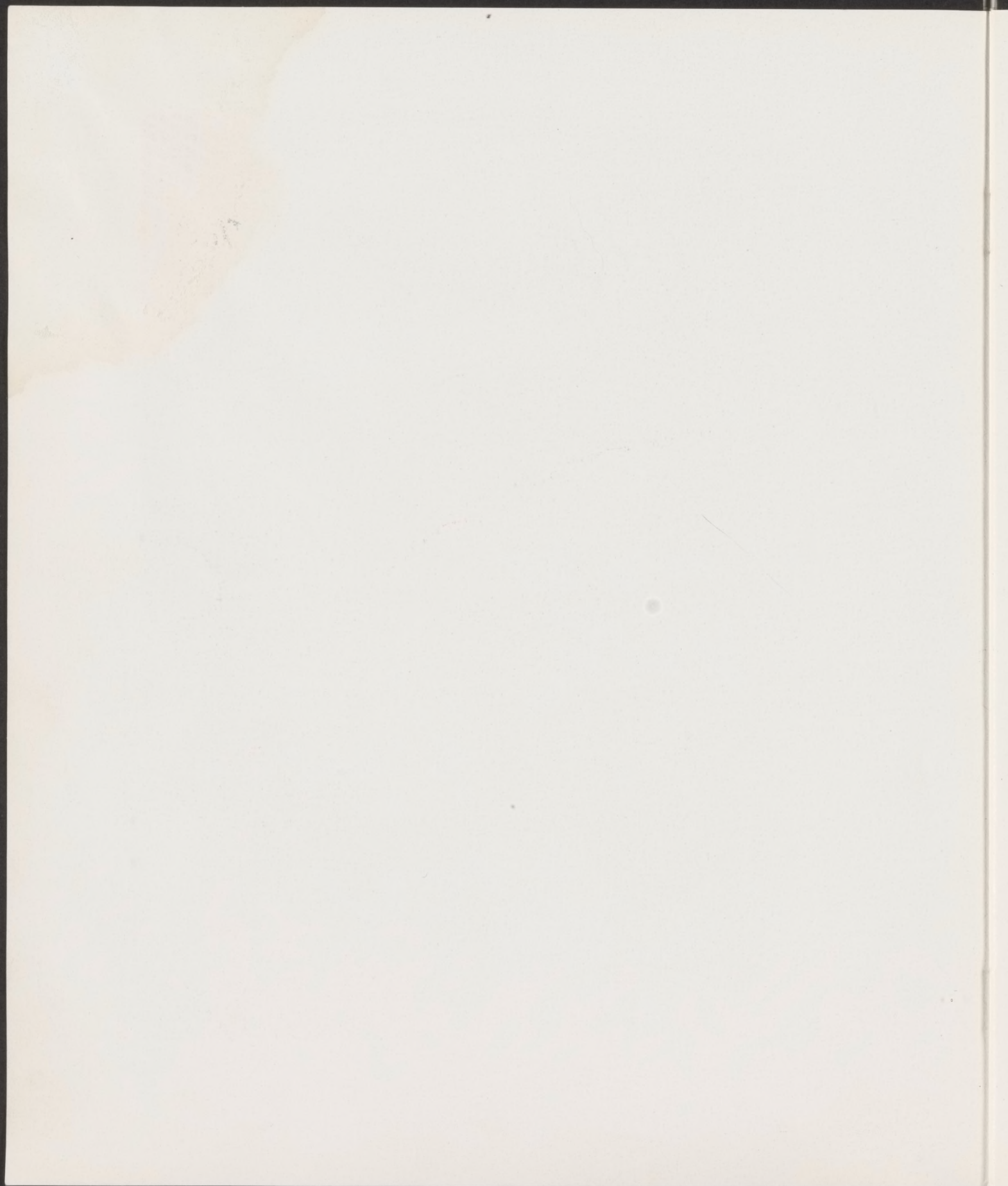


Heartiest congratulations and sincere best wishes to all students who have worked through this year to a successful conclusion! You have proved that character can be built in spite of unusual difficulties. Aloha nui loa! . . .
 Dallas C. McLaren, Principal

Row 1—Venning, Asami, Courage, K. Nakamura, Burrell, Michael, Harris, de Silva, Nishi, Decker. Row 2—Mine, Onoye, Tsuda, Yoshida, Sato, Cushman, Coates, Manning, Hall, Wetmore, Smith, Kanai, R. Nakamura. Row 3—Yamaoka, Kanagawa, Hirabayashi, Saguchi, Aihara, E. de Silva, Wakayama, McLaren, Kawaguchi, Sakamoto.









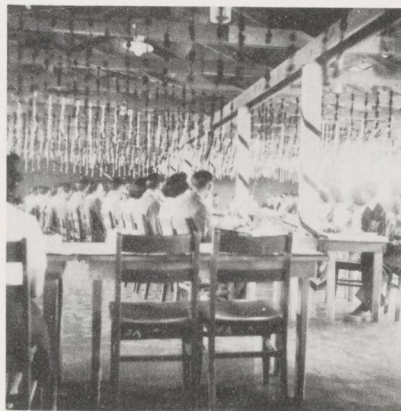
Row 1—Advisor Mrs. de Silva, Sec. May Ogawa, Historian Chiyeko Hibino. Row 2—Yell Leader Robert Ichinaga, Boys' Ath. Mgr. Roy Matsueda, Pres. George Makishima, Vice-Pres. Masao Mizutani, Treas. Charles Sukekane, Rep. Kaoru Takata.

The Seniors of the first graduating class of Poston Two High School have just completed their last year of school on a very strange campus out in the middle of nowhere—Poston. In spite of the intense heat, the cold, and the wind and dust, the Seniors have stuck it out to the end to finish their courses. They have had a successful year under the advis-ship of Mrs. Gertrude de Silva.

The outstanding social events of the year were: the Junior-Senior Prom, with "Garden Promenade" as the theme; the Senior Ditch Day, spent along the beaches of the Colorado River; the Senior Banquet, with many distinguished speakers; and the Senior Dance, a fitting climax to the year's social program.

Upon graduation, some will go on to institutions of higher learning, others will seek outside employment, and many will remain in Poston. Wherever they may be, they will uphold the standards of Poston Two High School and be of constructive worth to society.

GRADUATING CLASS





Charles Sukekane, Tatsuya Higashi, Yukio Ide, Tadamashi Sagara, Noboru Takao.



Jane Hayashi, Lucille Matsumoto, Jean Hamada, Kimi Fukuto, Sachiye Endo.



Harry Menda, Yoshiro Tokiwa, Yasuo Abe, Itsumi Oia, James Endo.



George Hoshida, Joe Umeda, Itsuki Ariyoshi, Minoru Takata, Tsugio Ikeda.



Satsuki Yasumoto, Yoshie Watari, Kazuto Taniguchi, Dora Nishimura, Abe Miyake, Chiyeko Yamamoto.



Yukiye Nakayama, Yozo Teraji, May Ogawa, Edward Tanaka, Raymond Sunada, Takako Yagi.



Ken Kimura, Masayoshi Nishimoto, Bob Akahori, George Nishikawa, George Tani, Yukio Morita.



Michi Oka, Aice Watanabe, Yoshiye Yamane, Shiro Kudo, Takako Yoshizaki.



George Sueoka, Helen Shiba, Richard Yamamoto, Sue Etow, George Makishima.



Natsuko Masuda, Roy Matsueda, Katherine Yamaguchi, George Yamanaka, Yukiko Kobori.



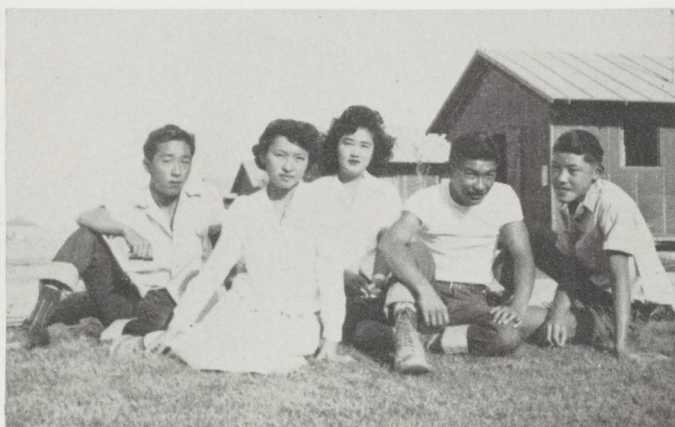
Hifumi Yamamoto, Emi Yokoyama, May Tsukamoto, Jack Matsuoka, Mary Tada.



Momo Iwakiri, George Sonoda, Tayeko Hironaka, Fred Kojima, Marjorie Kosaka.



Jessie Higashi, Fumi Onitsuka, Satsumi Ishida, Jean Iyama, Toshiko Toguchi.



Katsumi Okada, Amy Yanohira, Amy Koyama, Masaomi Morimoto, John Oda.



Tom Sato, Satoko Suehiro, Kaoru Takata, Sanae Okumura, Chizuko Yamada, Jim Taketaya.



Setsuo Hisatomi, Chiyeko Hibino, Asano Nakamura,
Miyako Inouye, Robert Ichinaga.



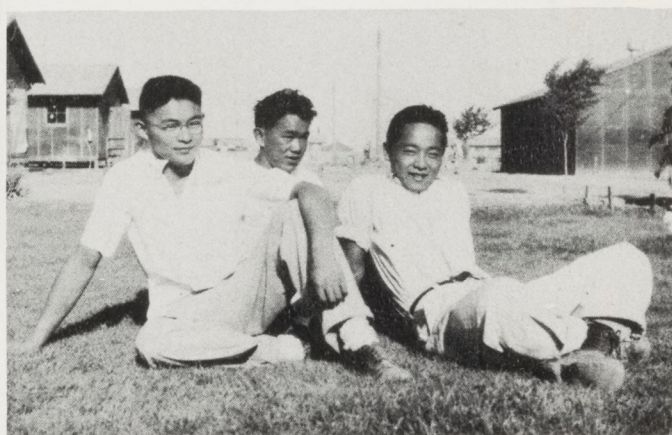
Shizu Hatakeda, Takeshi Kiyohara, Sally Matsushita,
Hideo Kuroda, Momoyo Higashi.



Bessie Takehara, Masao Mizutani, Ichiro Miyamoto,
Tommy Sakata, Mari Yasukawa.



Nancy Maegoto, Aiko Kayashima, George Toda, Alice
Yamaoka, Mary Naganuma.



Susumu Ono, Shizuo Kawaguchi, Tommy Kakka.



CLASS OF '44

Row 1—T. Matsumoto, Homma, Machida, Ichiki, Motoike, Hayashi, Endo. Row 2—Ichikawa, Hashimoto, Inouye, Aramaki, Kato, Hatano, Masuda, Fujimoto, Oda, Furuike. Row 3—Kimura, Miyake, Kado, Ikeuye, Kamo, Deguchi, Hironaka, Kanagawa, Mizuki, Ichikawa. Row 4—Horikawa, Kamitani, Furumoto, Hirota, Ito, Isono, Kawashiri, Imoto, Muragishi, Kamei, Hamamoto, D. Matsumoto, Miyanaga. Row 5—Irino, Kawakami, Inagi, Matsunami, Kimoto, Kuwabara, Gytoku, Hasegawa, Kamo, Miyasaka, Koda, Kono, Ihara, Hamada, Kobara, Furumoto.

Row 1—Sec. Dorothy Sakasegawa, Vice-Pres. Mary Kanagawa, Historian Sachiye Mizuki, Ath. Mgr. Helen Nishida, Rep. Haruko Yamamoto, Yell Leader Esther Nana-mura. Row 2—Pres. Ted Kato, Ath. Mgr. Charles Hirokawa, Treas. Joe Tsuboi, Yell Leader James Hatano, Advisor Mrs. Snelson.

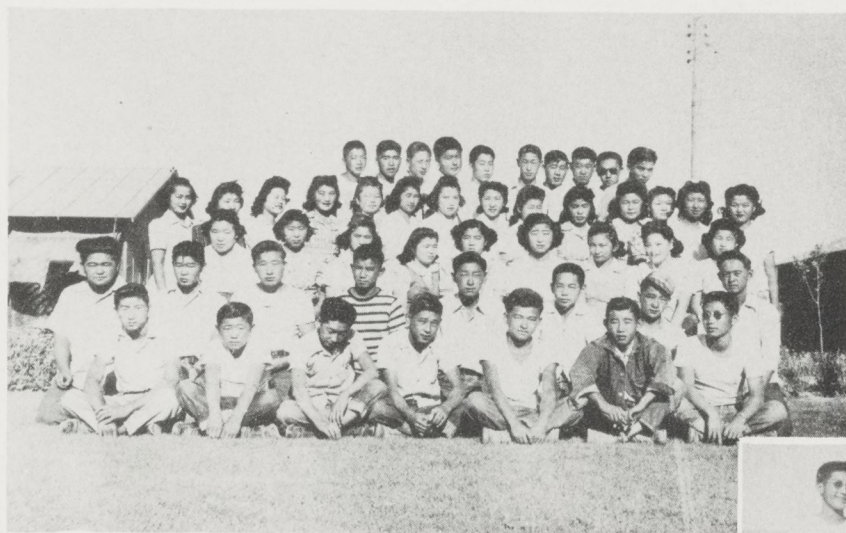


Row 1—Sunahara, Toguchi, Yoshida, Matsui, Osumi, Daikoku, Tsuboi, Terao. Row 2—Toya, Sakasegawa, Oita, Yoneda, Tsubouchi, Nanamura, Sunada, H. Yamamoto, Ninomiya, M. Yamamoto, Nomi, Shiba. Row 3—Nitta, Takeshima, Shintani, Ogawa, Uchimura, Furumoto, Shigemoto, Ueda, Shimizu, A. Nakata, Nishida, Sugidono, Tokiwa, Ohara, Yoshida, Ogata, Yamasaki, Sugiyama. Row 4—Sakamoto, Shiratsuki, Matsumoto, Oki, Ichiki, Nakagawa, Nishikawa, Kadonaga, Kanamori, Tanaka, Yagura, Yokoyama, G. Nakata.

CLASS OF '45

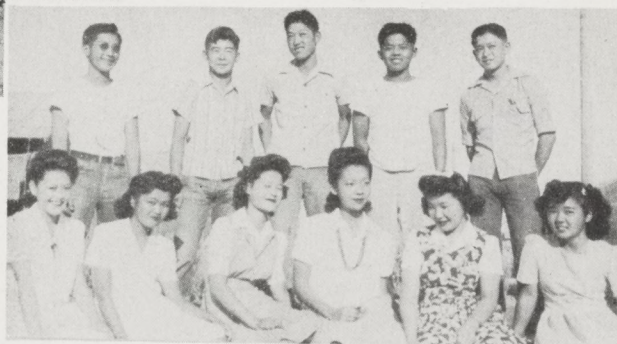


Row 1—Kamei, G. Kawakami, Ikeda, Kiyohara, Iyemura, Kudo, H. Kawakami. Row 2—Kayashima, Kaneno, Kuroda, Fujita, Ito, Kitamura, Asami, Arima, N. Endo. Row 3—Fukunaga, Hatano, Hasegawa, Hatashita, K. Imoto, Kobata, Kokka. Row 4—Dohi, Kawaguchi, Hironaka, Fuji, Hoshida, Fujitsubo, Hayashi, Iwasa. Row 5—Kojima, Harada, S. Imoto, Kato.



Row 1—Sato, Nakagawa, Yaji, Morita, Nishimoto, Shiba, Tsutsui. Row 2—Oganeku, Yokoi, Ohno, Matsumoto, Soda, T. Endo, Toguchi, Yamaguchi. Row 3—Namba, Sueoka, Menda, T. Yamashita, Teramoto, Yasukawa, Nishioki, Oku, Sagara. Row 4—G. Yamamoto, J. Yamamoto, Yoshida, Murata, Yamaoka, Urakawa, Yoshiki, Matsui, Y. Yamamoto, T. Watari, Yagi, Ono, M. Yamashita, S. Yamamoto. Row 5—Taniguchi, Miyamoto, Nakano, Sato, S. Sato, Sasano, Tange, Ogawa, Saiki, J. Sato.

Row 1—Treas. Betty Oku, Yell Leaders Shigeo Yamamoto, Frances Yoshida, Girls' Ath. Mgr. Theodora Obana, Historian Janet Yamamoto, Sec. Chizuko Kitamura. Row 2—Yell Leader Marvin Tsutsui, Boys' Ath. Mgr. Henry Iyemura, Vice-Pres. Ben Dohi, Parliamentarian Kenji Harada, Pres. Mitsuo Ikeda.



CLASS OF '46

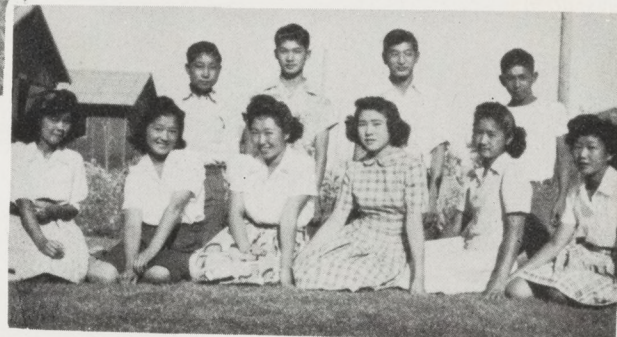


Row 1—S. Furuike, Arase, Koda, Hamamoto, Hamada, Ichikawa, Kawashiri. Row 2—Kobayashi, Imoto, Kamitani, Abe, Kitamura, Hironaka, Kuwabara, Doi, Goto. Row 3—Akahori, Inoguchi, Hironaka, Higashi, Endo, Iwakiri, Higashi, M. Furuike, Kojima. Row 4—Fujitsubo, Homma, Koyama, Kimoto, Kimura, Kiyohara, Isono, Kuwano, Ichikawa. Row 5—Kanamori, Aramaki, Fujii, Irino, Katayama.



Row 1—Yell Leaders Fusako Imoto, Cassie Mae Yagi, Rep. Miho Takizawa, Sec. Alyce Kuwabara, Girls' Ath. Mgr. Kinuye Kadani, Treas. Miyeko Abe. Row 2—Vice-Pres. Tommy Nanamura, Pres. Benny Masatani, Boys' Ath. Mgr. Tatsuo Tazumi, Yell Leader Tommy Tanimura.

Row 1—Matsui, Umeda, M. Yanagisako, Taketaya, T. Yamamoto, Taniguchi, Ogawa, Okamoto, Naganuma. Row 2—Yamashita, Yanohira, K. Nagai, E. Yamamoto, Tani, Sakai, N. Yamamoto, Yamaoka, Morimune, Sakasegawa, Urabe, H. Yanamishi. Row 3—Miyahara, Yamaguchi, C. Sonoda, Nakashima, S. Nakai, Sumida, Muragishi, Tange, Takizawa, Yogi, Okumura. Row 4—A. Yamanishi, Masatani, Tazumi, Sato, T. Sonoda, Ono, Tanimura, Sakurai, Yokoyama, Sugiyama, Nakata. Row 5—Nanamura, Takahashi, Namba, F. Yanagisako, Shiba, Tanaka.





SEVENTH AND EIGHTH GRADES

Row 1—Arase, Hamada, Kazaoka, Morimune, Taniguchi, Matsueda, Endo, Etow, Higashi, Yamamoto, Imoto, Oka. Row 2—J. Hamamoto, Sasano, Furumoto, Sakai, M. Endo, Nakano, Kanamori, Kudo, Shiratsuki, Katayama, Morimoto, Nishimoto. Row 3—Nakashima, Yamamoto, Ohara, Shigemoto, Kaneno, Yokoyama, Miyahara, Sato, Matsumoto, Honma, Mukai, Uchimura, Koda, Ikeuye, Nagata. Row 4—Kudo, Sugiyama, Sasao, K. Yamamoto, Kuwabara, K. Kawahira, Iwasa, Miyamoto, Masuda, Tange, Kono, Yaji, Kawahira, Ogawa, Kawakami.



Row 1—Okamoto, Watari, Sato, Ichinaga, Hayashi, Kamei, Matsuoka, Shiba, Tsubouchi. Row 2—Ohara, H. Okumura, Kokka, Kishimura, Hatashita, Endo, Sonoda, Ninomiya, Ito, Matsumoto, Kamo. Row 3—Tajiri, Urabe, Teraji, Yamamoto, Ohara, Okumura, Shiramizu, E. Kato, Yoshizumi, Yoshida, Shimizu, Uchida. Row 4—Hiroto, Inoguchi, H. Kato, Onitsuka, H. Yamamoto, Yuki, Okino, Gytoku, Hirayama, Arima. Row 5—Shigemoto, E. Okumura, Sakurai, Yashimoto, Sunada, Sugiyama, Yamanishi, Umeda, G. Yamamoto, Tokiwa, Okino, Takemoto.

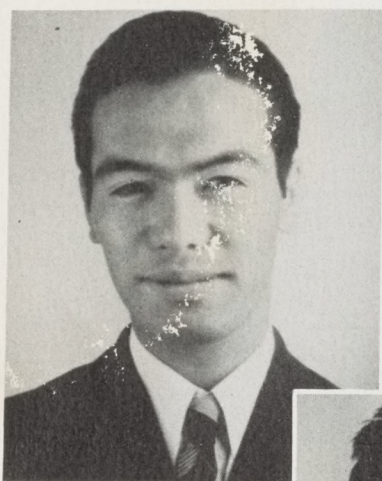


Row 1—Daikoku, Fujinaka, Inouye, Ichikawa, Ishibashi, Matsuo, Harada, Hibino, Inouye. Row 2—Aramaki, Y. Imoto, Kobori, Fujuhara, Haneno, Kimura, Ito, Matsumoto, Hironaka. Row 3—Gytoku, H. Imoto, Kayashima, Eto, Fukuto, Endo, Menda, Morimoto, Nishimura, K. Aramaki. Row 4—Matsumoto, Asami, Kobata, Hanaoka, Nakayama, Iyama, Miyamoto, Nakashimo, Nishikawa, Hatakeeda.



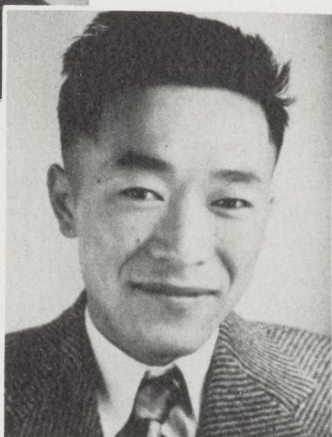
Row 1—Historian Edna Kato, Sec. Lillian Yoshizumi. Row 2—Treas. Jack Watanabe, Pres. Paul Dohi, Vice - Pres. Satoshi Hirayama.

SENIOR HONOR PAGE



VALEDICTORIAN . . . The Seniors this year are proud to have as their classmate, Itsumi Oita, highest-ranking student and valedictorian of the first graduating class of Poston Two High School. He hails from Watsonville, and his high school career there, as well as in Poston, has been a most outstanding one.

Taking the leading role in student government as President of the Associated Student Body, Itsumi has pioneered and extended invaluable services in promoting and furthering student body activities and organization. In addition to his participation in extra-curricular fields, Itsumi leaves behind him an enviable "straight-A" scholastic record.



SALUTATORIAN . . . Taking the honors as salutatorian this year was Kaoru Takata. He has proved himself not only a scholar but also a capable leader. Among the many activities in which he participated were the Junior Red Cross Council, of which he was President, and the Student Body Council.

HONOR STUDENTS

YUKIO IDE

ITSUMI OITA

ALICE WATANABE

LUCILLE MATSUMOTO SATOKO SUEHIRO

YOSHIYE YAMANE

MASAOMI MORIMOTO KAORU TAKATA

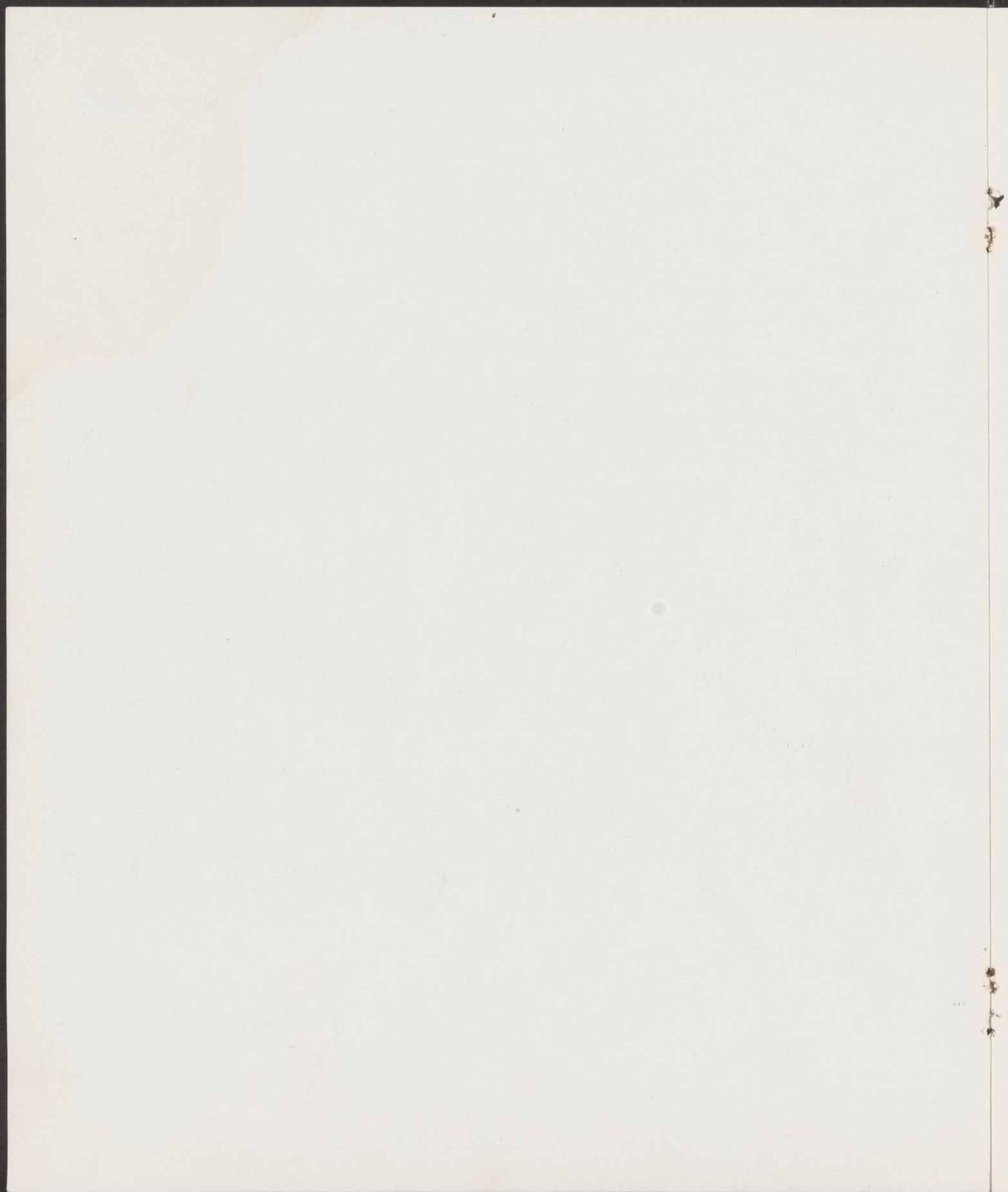
AMY YANOHIRA

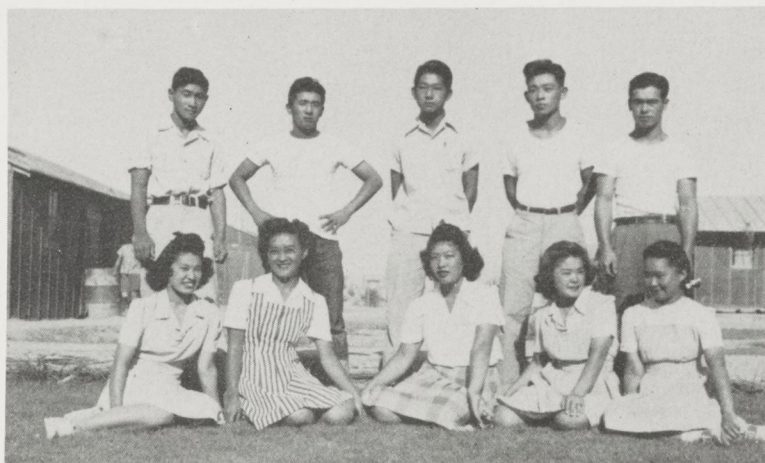
JOHN ODA

MAY TSUKAMOTO

SATSUKI YASUMOTO







STUDENT BODY CABINET

Row 1. Yell Leader Bessie Takehara, Ath. Mgr. Sue Etow, Yell Leader Mary Tada, Sec. Takako Yagi, Hist. May Tsukamoto. Row 2. Yell leader Kazuo Tokiwa, Ath. Mgr. Harry Menda, Vice-Pres. Yasuo Abe. Treas. George Yamanaka, Pres. Itsumi Oita.

S. B. REPRESENTATIVE COUNCIL



Row 1. Masuda, Takehara, Tsukamoto, T. Yagi, B. Hamamoto, Kuroda, Kawashiri, Nomi, Matsueda, Kazaoka. Row 2. Iyama, Etow, Tada, Endo, M. Hamamoto, Ichikawa, Takizawa, Abe, Deguchi, Sakasegawa. Row 3. Kudo, Kato, Obana, Hori-kawa, Ichinaga, Yamaguchi, Yamanaka, Oita. Row 4. Tokiwa, Nishimoto, Dohi, Tanaka, H. Yamamoto, Y. Abe, R. Yamamoto, Yasumoto.



EL CHAPARRAL STAFF

"Hurry—deadline this week!" "The girls' basketball team is still in the camera—get them out of the dark!" These were frequent terms heard around El Chaparral office. Pioneering and working under extreme handicaps, the staff of El Chaparral, under the capable leadership of co-editors Takako Yogi and George Obana, offered the students of Poston Two High School the first yearbook to be published at this institution.

The technical details were handled by hard-working co-editor Takako Yagi with Mr. Shigeru Kanai taking the advisory spot. The literary work was compiled by co-editor George Obana with grand assistance from his staff, and advisor Mrs. Gertrude de Silva. The business staff, managed by able May Tsukamoto and her assistants, Mary Tada and Dorothy Sakasegawa, with Miss Kay Nakamura advising, made both ends meet financially. Special credit should go to the untiring efforts of the photographers, Richard Horikawa and Kazuto Takeshima, who were capably assisted by advisor Mr. Isami Nakamura. The art work was handled superbly by skillful art editor Satoka Suehiro and her staff, with Mrs. Viola Kerber pitching as advisor. The large sale of pledge cards was due to the excellent advertising by publicity manager Gene Nakata.

Uppermost in the minds of the whole staff during the publication of this yearbook was to record for the Associated Students of Poston Two High School, in an annual of which they might well be proud, the pleasant memories of the 1942-43 school year.

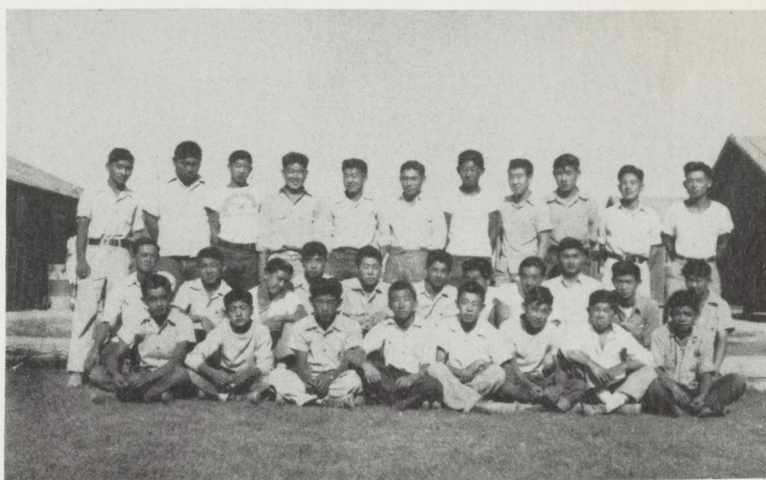




JUNIOR RED CROSS

Row 1. Yokoi, B. Kayashima, A. Kayashima, Yamaoka, Oka, Tsukamoto, Takata, Tanaka. Row 2. Mrs. Courage, Onitsuka, Ikeuye, Takahashi, Kawashiri, Isono, F. Yamaoka, Nakata, C. Yagi, Kuwabara, Hironake, Kiyohara.

F. F. A.



Row 1. Oshita, Terao, Kawamura, Fujita, Hirokawa, Morita, Yoneda, Higashi. Row 2. Yamaguchi, Matsueda, Watari, Sato, Higashi, Shoji, Hirano, Ogawa, Etow, Uchimura. Row 3. Tokiwa, Yoshizaki, Sato, Kojima, R. Ichinaga, Kiyohara, Hayashi, Teraji, Tange, O. Ichinaga, Yamanaka.

STUDENT COUNCIL . . .

Proudly we hail the Student Council of Poston. Two High School as the curtain is drawn on its initial year.

To them fell the task of building an organization of students formerly scattered throughout a wide area, each with his own whims and opinions about an ideal school system.

Under the able leadership and constructive criticism of President Itsumi Oita and Principal Dallas C. McLaren, theirs has been a series of achievements high-lighted by the groundbreaking ceremonies for our new school buildings.

" . . . in order to attain a democratic unity among ourselves, develop a competent and aggressive leadership, and stimulate enthusiasm for the ideals and efficiency of the school . . ." well can we all be proud as these words from our Constitution are read by fellow classmen and those to follow.

RED CROSS

The Poston Two High School Chapter of the Junior Red Cross was organized on December 1, 1942, with temporary chairman Itsumi Oita presiding. At a later meeting, President Katoru Takata and his associates, Vice-President Michi Oka, Secretary Alice Yamaoka, and Treasurer Gene Nakata were elected, with Mrs. Mary Courage as advisor.

With cooperation and donations from the Student Body, the organization was able to conduct many activities, of which two were outstanding. One was the distribution of Christmas gifts to the nursery and primary grade children. The other was the combined pageant and bazaar held on the night of April 30, and the following day. This, which was the culmination of much work on the part of the cabinet and faculty advisors, was especially well received.

F. F. A.

The first election of the F. F. A. saw George Yamanaka as prexy, ably assisted by Vice-President Toshio Sonoda, Secretary Miuki Fuji, Treasurer Orden Ichinaga, Reporter Joe Tsuboi, Watch Dog Shigeo Ino, Yell Leaders Kazuo Tokiwa and James Hatano, and Athletic Manager Takeshi Kiyohara.

Rapidly following the election was the Greenhand Initiation in which all first-year students were initiated to hold the Greenhand degree.

As a result of the huge success of the "Winter Gathering," where popular Dorothy Sakagawa reigned as Queen, the F. F. A. became one of the most industrious and progressive clubs of the school.

Throughout the year the students assisted the Agriculture Department in beautifying the school campus and also took part in various other enterprises. Probably the greatest achievement of the F. F. A. was the initiation of a farm program which included poultry raising, truck farming, and hog raising projects.

The practical experience coupled with the knowledge of agriculture obtained from these projects will enable the F. F. A. students to attain the goal they are determined to reach—that of becoming successful farmers.

POSTON PUBLIC SCHOOLS
CAMP II



departments

RECEIVED
JAN 11 1964

TRANSITION IN POSTON

Looking at the surroundings one could at once see what had been there before — the dead-looking mesquite of the summer months blooming with yellow flowers in the spring — arrowweed growing from the ground as straight as its namesake — cottonwood trees growing by the river, and some removed from its banks, showing the changing direction of the river-bed — cactus here and there, furnishing food to animals who wished to inhabit the hot, vast area untouched by man's hand.

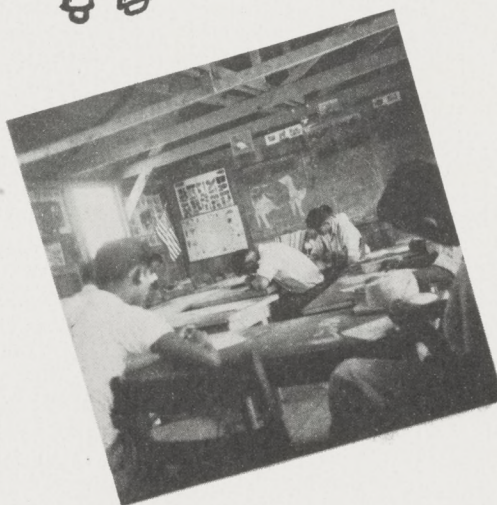
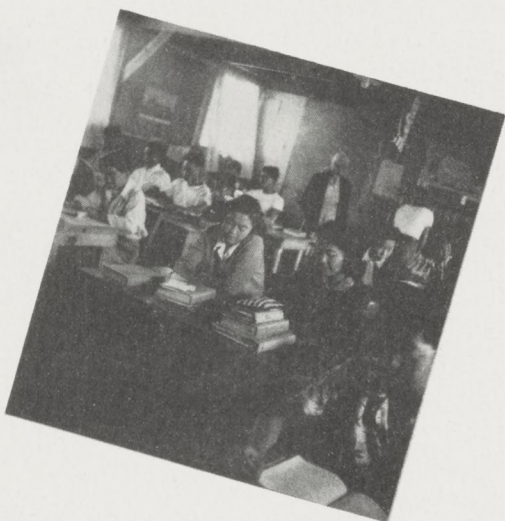
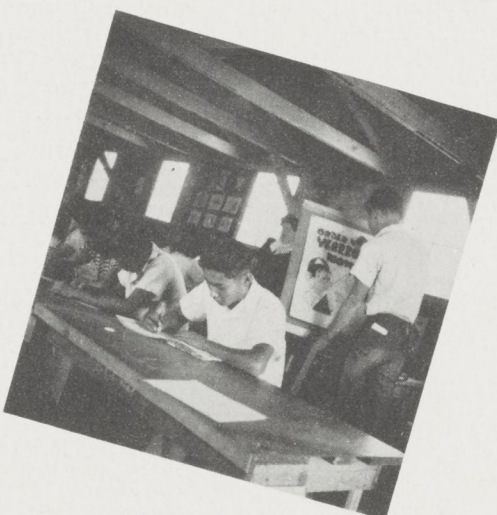
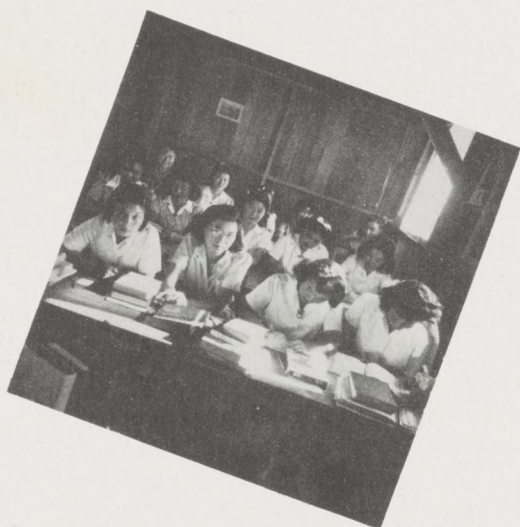
Who or what were the animals that inhabited this area, believed too hot for settlement? On this land, touched only by Indians, cowboys, and seekers of gold, were tracks of many wild animals. There were the small prints of the rabbit which fed on green vegetation, the dog-like print of the hungry coyote which howled to break the silence of the night, the hoofprint of wild horses left to graze upon what they could find on this desert, and the print of reptiles and insects, ready to harm any intruder in their "paradise." Overhead were the hungry vultures and hawks, waiting for their prey. This was the Poston of yesterday.

Then part of the desert was cleared away and buildings were set up to accommodate the Japanese people of the Pacific Coast, who were believed dangerous to our war defenses. Thousands who had never before seen desert, nor felt the heat of the burnished sun, nor tasted the wind's dust, were moved to Poston — once the land of wild animals, birds, and reptiles. It was for them — the people — to carry the burden of settlement.

Hatred was in some people who had been torn from their homes and families. To all who came, it was hell. The temperature rose and the heat shimmered in great waves. Now that they were here — what were they to do about it? To make hell of hell meant only demoralization for themselves and others.

What did they do? Among these people there were some with initiative and determination. Under their will and courage the ground grew green. Slowly, slowly each man begins to find his place, to lift his head and to hope again.

Masao Mizutani



AGRICULTURE . . . The first page in the history of the Agriculture Department was written on October 5, 1942. Since then, the Department has had an average enrollment of forty students, each and everyone of whom is interested in gaining scientific knowledge and actual experience in order to produce farm commodities of better quality. Due to the untiring efforts of Mr. Minoru Saguchi and the Community Agricultural Department, they were able to begin a school project on hog raising, truck farming, and poultry raising in April. Unfortunately, in May, Mr. Saguchi was obliged to leave school because of his relocation to the Middle West. He was succeeded by George Yamanaka, Rudy Tokiwa, and Miuki Fuji who have carried on the work in a fine manner.

COMMERCIAL DEPARTMENT . . . "No books, no typewriters! Gee—what have we got to teach with!" These were the common worries of commercial teachers Miss Kay Nakamura and Mr. Robert Kanagawa. Such was the beginning of the Commercial Department of Poston Two High School. It was not until three months later that the books and materials finally arrived. Yes, a tough beginning it was, both for the teachers and students. Today, however, the Commercial Department is offering the students courses comparable to those of any other high school. Some of the courses offered are business mathematics, junior business training, bookkeeping, shorthand, secretarial training, and some typing. Next year, however, this department is expecting to offer regular typing classes.

THE HOME ECONOMICS courses this year offered a variety of subjects to aid future homemakers. Under the guidance of Mrs. Harriet Decker and Miss Kay Asami, the students became acquainted with the intricate details of drafting patterns and sewing together wearable garments.

Classroom training made it simpler for the students to learn home management and home nursing.

By serving the nursery and primary children in the school kitchen, the students gained invaluable experience in dietetics and child psychology.

Also, many organizations owe a vote of thanks to these girls who willingly gave their services at parties, banquets, and other functions where food was served.

THE ARTS AND CRAFTS Department, headed by Mrs. Viola Kerber, has been one of the most popular classes at Poston Two High School.

The lack of necessary equipment was at first a severe handicap, but with a bit of ingenuity, the problem was overcome and the classes took up wood carving. Many beautiful and original pins, plaques, and trays were made.

During the year, two outstanding exhibits were held displaying the students' work, which covered a wide range. Included were paintings, cartoons, and many other practical and original projects in fine arts and crafts, such as stencilling on greeting cards and cloth, linoleum block printing, crayola tapestries, and a mural of the story of evacuation.

THE CORE STUDIES represents a phase of the development of democracy in America. In an attempt to make the study of life in America more significant, literature, history, and the study of the correct usage of the English language are embodied in a course which also gives emphasis to the study and practice of democracy.

The importance of social adjustments and vocational fitness is emphasized, and the student is urged to discover his abilities and to prepare for his vocation in those fields where he has natural talent. However, the most significant objective of the Core Studies is the development of personality and group cooperation.

PHYSICAL EDUCATION AND HEALTH . . .

With a Christmas donation from the McKinley High School in Hawaii, a Boys' Physical Education Department became possible during the second semester under the general supervision of Mr. Elmer de Silva. Under the leadership of Mr. Robert Sakamoto, Mr. George Inagi, Mr. William Wakayama, and Mr. Tony Nakazaki, the grateful athletes made full use of the new equipment. Much competitive spirit was shown by them as they participated in basketball, baseball, decathlon events, and other sports. In the Health Department complete dental and physical examinations were scheduled for each pupil, grades 1-12, in cooperation with the best doctors of Poston.

WOODSHOP AND AUTO MECHANICS

students have been industriously engaged in their respective projects throughout the school year.

The first several weeks were somewhat unproductive because of a lack of tools. Soon, however, the daily noise of the sawing of boards and the pounding of nails gave evidence of intense activity. The pupils by now have produced splendid bookcases, tables, chairs, and other woodwork.

The Auto Shop students were certainly thrilled to receive a 1928 Chrysler, with the compliments of Mr. Roscoe Vaniman. When the repair of the erratic mechanism had been completed, the car was tested. And guess what! It actually worked! A second car, a 1934 GMC, was received in the shop from Mr. Robert Montgomery.

With such splendid teachers as Mr. Minato Kawaguchi, Mr. Shigeru Kanai, and Mr. Joe Umeda guiding them, there is no doubt in the minds of all Woodshop and Auto Mechanics students that this first year was a most successful one.

SCIENCE . . .

Despite the hardships encountered in the science classes, eager and industrious students, encouraged by the untiring efforts of their inspiring teachers, made numerous advancements in their respective fields.

Capable leaders who guided the students were Miss Kazuko Nakamura, Mr. Shuki Hayashi, Mr. Richard Nakamura, Mr. Shigeru Fujimoto, Mr. Fred Yoshioka, Mr. Ray Hasegawa, and Mr. Yoneo Gota.

Although many handicaps hindered their progress, this most successful year will be outstanding among the reminiscences of our future physicists, chemists, biologists, and physiologists.

MATHEMATICS . . .

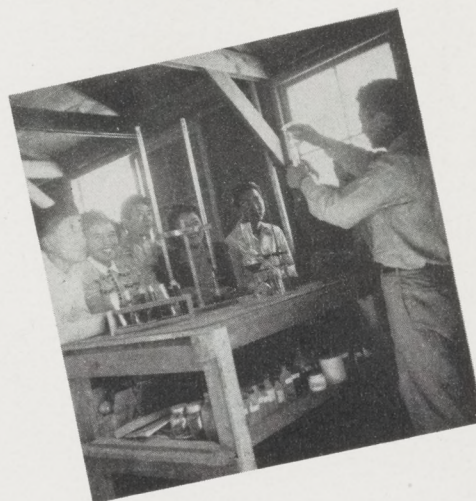
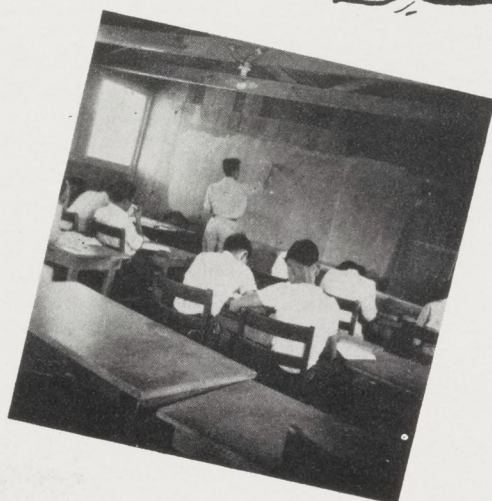
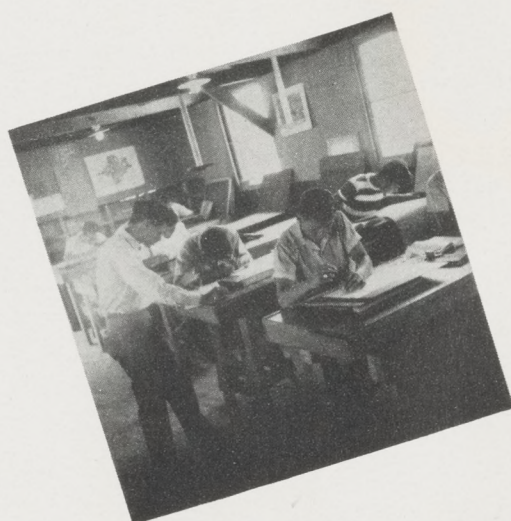
Throughout the school year, mathematics students were busily engaged in problems concerning algebraic and transcendental functions as well as geometrical theorems and propositions. Many "braintwisters" were encountered during the school year in the respective classes. However, with such brilliant teachers as Mrs. Georgia D. Robertson, Mr. Shuki Hayashi, Mr. Shigeru Fujimoto, Mr. Ray Hasegawa, and Mr. Don Yamaoka, they were easily solved.

Credit for the successful classes also goes to the many industrious students who will use the powerful tool of mathematics in future years.

MECHANICAL DRAWING . . .

One of the most efficiently equipped departments of our school is the Mechanical Drawing division. Under the capable instructorship of Mr. Minato Kawaguchi, the students are enjoying courses equivalent to those of other schools.

Among the students taking this course are those majoring in aeronautical, mechanical, and architectural engineering, and in general drawing.



ATHLETICS

BOYS' SPORTS The Varsity Basketball five, coached by Mr. William Wakayama and Mr. George Inagi, played but one contest during the local casaba season, which ended in a 56-34 loss at the hands of the towering Poston Three High School aggregation.

Although outreached by their opponents' average height of 5' 10", the local squad performed extremely well in the initial and second cantos. Following intermission time, the well-oiled Poston Three machine began to roll, as they unleashed a terrific 36-point scoring splurge to our 17. The contest, therefore, ended in a lopsided score.

Coach Wakayama's "A" softball team winning six games in nine starts, seemed like a wonder team and a coach's prayer come true, compiling 64 runs to the opponents' 25 in nine games.

Steady, fast ball, and change-of-pace artist, that Senior twirler, Tsugio Ikeda, kept all opponents under control in all the games he pitched, winning three Poston Interscholastic Softball League games against Units I and III.

In the second round of P. I. S. L. competition, our boys, championship bound, lost a heartbreaker to Unit III High in a nip-and-tuck battle till the last man was out.

As this publication goes to press the league championship is yet to be decided between Units II and III. The playoff for the championship will be one of the year's outstanding athletic events. At this date who knows!!! But with sluggers like Yokoyama, Hayashi, Sonoda, and Miyamoto knocking the horsehide around, with Mits Ikeda, Kajihara, Ariyoshi, and Menda always playing a spectacular defensive game, the boys are more than raring to bring home the bacon.

GIRLS' SPORTS Although girls' basketball in Poston Two High School was slow in making a debut there were a host of "casaba stars" turning out to Coach Inagi's call for practice. Using plenty of fast breaks and smooth ball-handling—Forwards: Sally Matsushita, Mary Tada, Chiyeko Yamamoto; Centers Sue Etow, Dora Nichimura; Guards: Ruth Eto, Alice Watanabe, Mary Nishikawa, Tomi Shiba were tops in their respective positions. These nine girls saw plenty of action against Poston Three High School when they lost by a very close score. High-lights of the game were: Sue Etow, hook-shot artist, 17 points; and superb defensive work by guard Alice Watanabe.

Young but promising—this is the correct wording for the girls' "B" Basketball Team, coached by Mr. Inagi. Although these girls were young and inexperienced, they were a hard-fighting team, whether ahead or behind, they always fought to the final whistle. Girls who saw considerable action were—Forwards: Kadani, Taniguchi, Yagi; Centers: Toya, Yoneda; Guards: T. Yagi, Miyana, Nishida, Nana-mura, Matsumoto, Imoto, Kimoto, Yamashita, and Nakata. With only a few Seniors going out, this is the team to win next season.

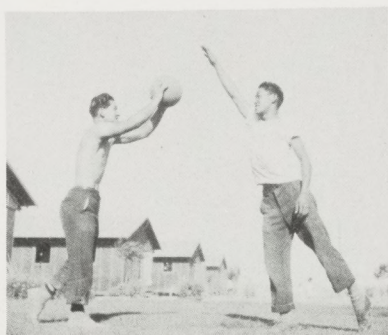
As this annual goes to press the girls' softball team under the guidance of Coaches Inagi and Wakayama, looks as though it will go through a very successful season. Already they have three practices behind them. From such excellent players as— Pitchers: Nana-mura, Morimune; Catchers: Naganuma, Yoneda; Infielders: Tada, Yagi, Etow, Nishida, Imoto, C. Yagi, N. Yamamoto, T. Yamamoto; and Outfielders: Shigemoto, Okamoto, Kimoto, Taniguchi, Yamamoto; it will be difficult for the coaches to select a first team.

Can the school ask for more than such an array of snappy ball-hustlers?



Row 1. Sato, Morimoto, Taniguchi, Ariyoshi, Menda, Horikawa. Row 2. Mr. Wakayama, Ogawa, Sasano, Kobara, Toda, Tazumi, Sonoda, Yokoyama, Oka.

Curses! Foiled again!



Row 1. Inagi, Sato, Matsuoka, Ichiki, Matsuo, Matsue, Mr. Wakayama. Row 2. Akahori, Isono, Furumoto, Hoshida, Taniguchi, Abe, Sukekane, Hirokawa.



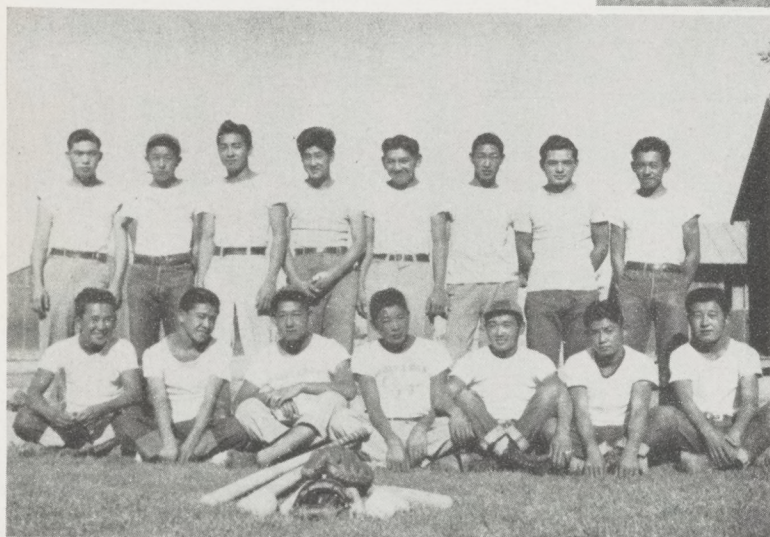
"... and good for two points."

BOYS' BASEBALL

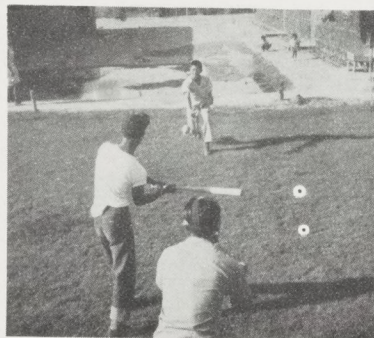


Row 1. Mr. Wakayama, R. Yokoyama, Taniguchi, M. Ikeda, Menda, Ariyoshi, Oka. Row 2. T. Ikeda, Hayashi, Miyamoto, Kobara, Tazumi, T. Yokoyama, Sonoda.

"I betcha can't hit this one, bud!"



Row 1. Daikoku, Matsueda, Abe, Taniguchi, Endo, Sakai, Oka. Row 2. Takeshima, Miyake, Furumoto, Hoshida, Kuroda, Sasano, Matsuo, Ichiki.



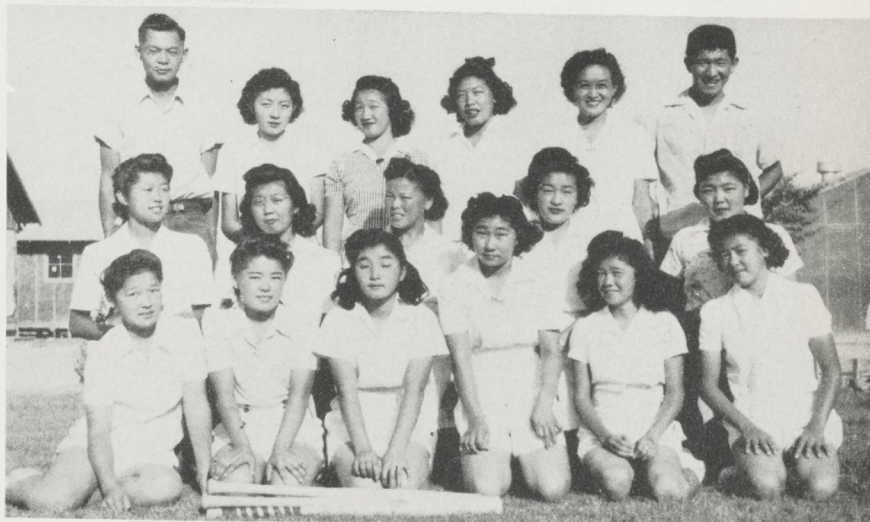
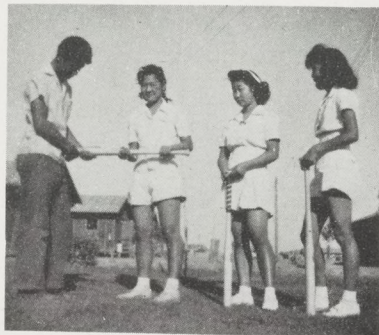
"Help! I've been framed!!"



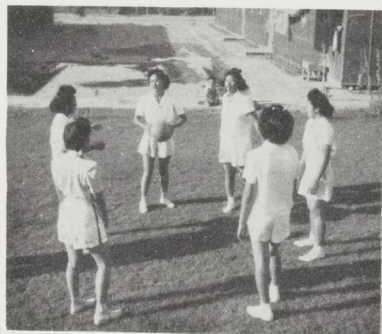
GIRLS' SPORTS

Row 1 T. Yagi, Okamoto, C. Yagi, Imoto, T. Yamamoto, Yamashita, Nakata. Row 2. Kimoto, Taniguchi, Toya, Shiba, Eto, Nishikawa. Row 3. Mr. Inagi, Matsushita, Tada, Nishimura, Etow, C. Yamamoto, Mr. Wakayama.

"Now, this is the way it's done, girls. Catch on?"



Row 1. C. Yagi, T. Yagi, Okamoto, Nanamura, Imoto, T. Yamamoto. Row 2. N. Yamamoto, E. Yamamoto, Taniguchi, C. Yamamoto, Kimoto. Row 3. Mr. Inagi, Nishida, Yoneda, Tada, Etow, Mr. Wakayama.



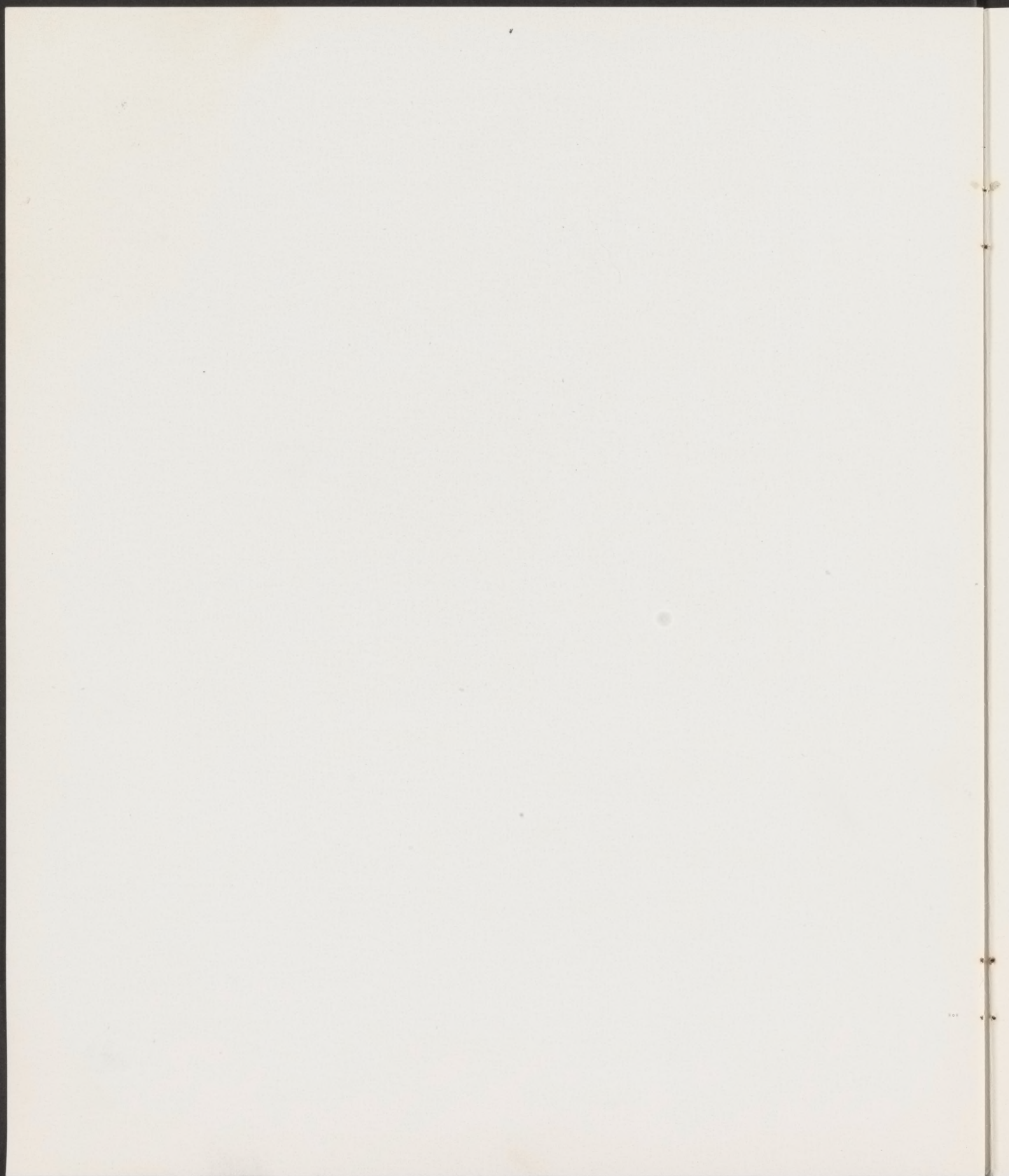
Well, don't just hold the ball; pass it!

1, 2, 3, 4, 5, 6, 7, 8, 9, 10, — Let's not "yaki-up," girls!!

CHRONOLOGY

- October 5: —First day, Who's who? No books, no chairs, no desks—sad case.
- 29: —Witches, ghosts, black cats, and Senior Halloween Party.
- November 2: —Should we ask the Seniors how much cotton they picked?
- 3: —The Juniors did better.
- 4: —The Sophomores worked the hardest.
- 12: —The first rally was sponsored by the Juniors. Give 'em the axe, the axe, the axe!
- December 18: —Stuffing of the ballot box on Student Body Election Day.
- 28: —I do, I do. It's not a wedding ceremony, but the installation of officers.
- January 1-3: —Ma, may I have a nickel to spend at the fair?
- 15: —Ground-breaking ceremonies for our ultra-modern school buildings — to be.
- 27: —Well, well, it **does** rain in Poston.
No school, no test.
- February 6: —Senior adobe making. Playing with mud. Oh! what fun!
- 15: —Famine? Europe, not Poston, by Dr. Kirby Page.
- 20: —The F. F. A. Winter Gathering. Swing your partners to the left! Farmers' jam session.
- March 3: —Lt. House from the WAACS. Women only!
- 9: —Writer's cramp! Got out of school to fill out W. R. A. Forms No. 126. Lotsa' money for the treasury—we hope!
- 27: —Junior - Senior Prom. Hey, Mom! Where's my tux?
- April 16: —Casaba Rally. Where's our spirit?
- 17: —Unit III Skyscrapers versus Unit II Midgets. You know the rest.
- 21: —Senior Ditch Day. Only the Seniors knew about it. Oh yeah!
- 29: —Revenge is sweet. Unit III is the victim of a double setback dished out by our "A" and "B" softball teams.
- 30-May 2: —Junior Red Cross Bazaar. Rehearsals terrible, but the pageant a success. Red carnations everywhere.
- 8: —Sophomore Hop. The most successful hop of the year.
- 15: —Senior Banquet. "SOS" Emily Post, here I come.
- 29: —El Chaparral Publicity Dance.
- 31: —Mr. Thomas R. Bodine spoke on student relocation to the Seniors. Wasn't he handsome, girls?
- June 3-5: —The Seniors aided in the reconstruction of the Cottonwood Bowl.
- 20: —Baccalaureate Service at sunrise at the Cottonwood Bowl.
- 24: —The first graduating class, the Class of '43. Girls in white, boys in maroon caps and gowns.
- 25: —Senior Farewell Assembly.
- 26: —Senior Graduation Dance.
- 28: —School's out. Hurray! But where can we go on our vacation?
Evening — Junior Farewell Social for the Seniors.
- September, 1950 What! Plastic desks! Why, when we were in Poston, we had invisible ones.





"All out of town orders will receive prompt and careful attention. Give careful description of goods wanted and state if a near substitute will be acceptable."

A. L. Brown & Sons

Salinas

California

"BEST WISHES"

J. V. HORNBEIN & CO.

260 South Los Angeles St.

Los Angeles

California

... There's no substitute for Quality---

Ask Those who buy from ...

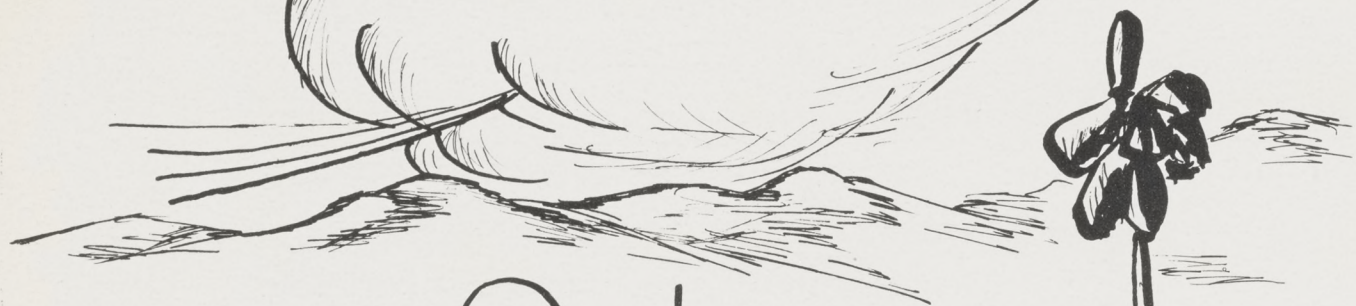
Charles Ford Company

DEPARTMENT STORE

Watsonville

California

.. "CONGRATULATIONS" ..



Poston
Community
Enterprises!....



Guardian of SEARS quality..

Sears' Technical Laboratories are the guardians of your pocketbook—protecting your dollars before they are spent. When you buy by mail at Sears, you do so with the knowledge that statements concerning quality and serviceability of merchandise are continually being checked. Sears laboratories conduct many tests under conditions similar to actual usage.

Sears great laboratories test Sears merchandise to secure your money's worth!

Sears, Roebuck & Co.

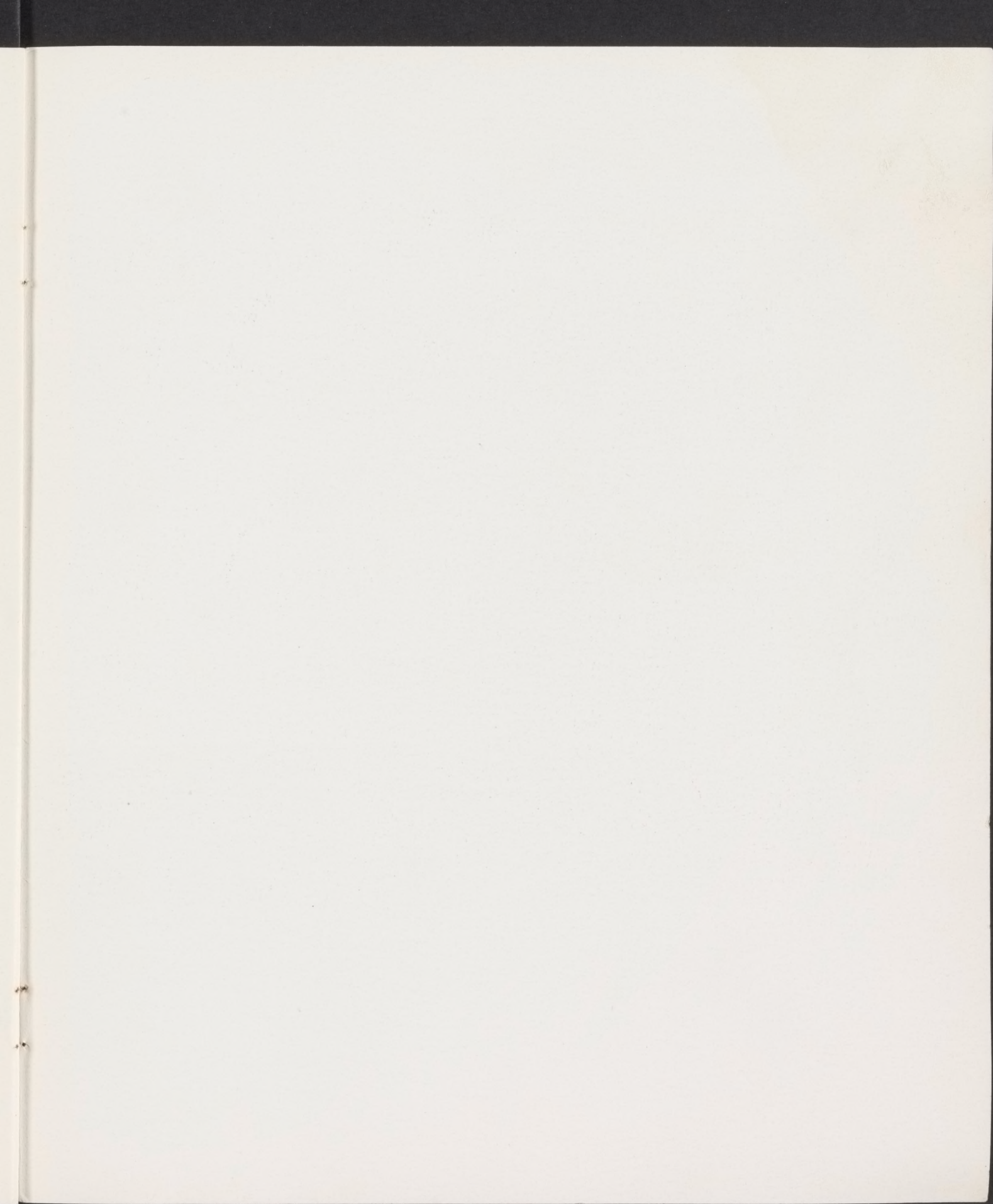
LOS ANGELES - CALIFORNIA

VOLUNTEERS

George Aihara
Peter Aoki
Shuki Hayashi
Robert Sakamoto
Kazuo Tokiwa
Masuo Tsuda

ACKNOWLEDGEMENTS

Mr. James D. Crawford
Mrs. Ruth Harris
Mr. Shojiro Horikawa
Miss Taneko Irino
Mr. C. E. Snelson
Mr. Kametaro Takiguchi
The Poston Chronicle
The Phoenix Engraving Company
The Central and Professional Library







632 Student Body file