

J2.356

67/14
C

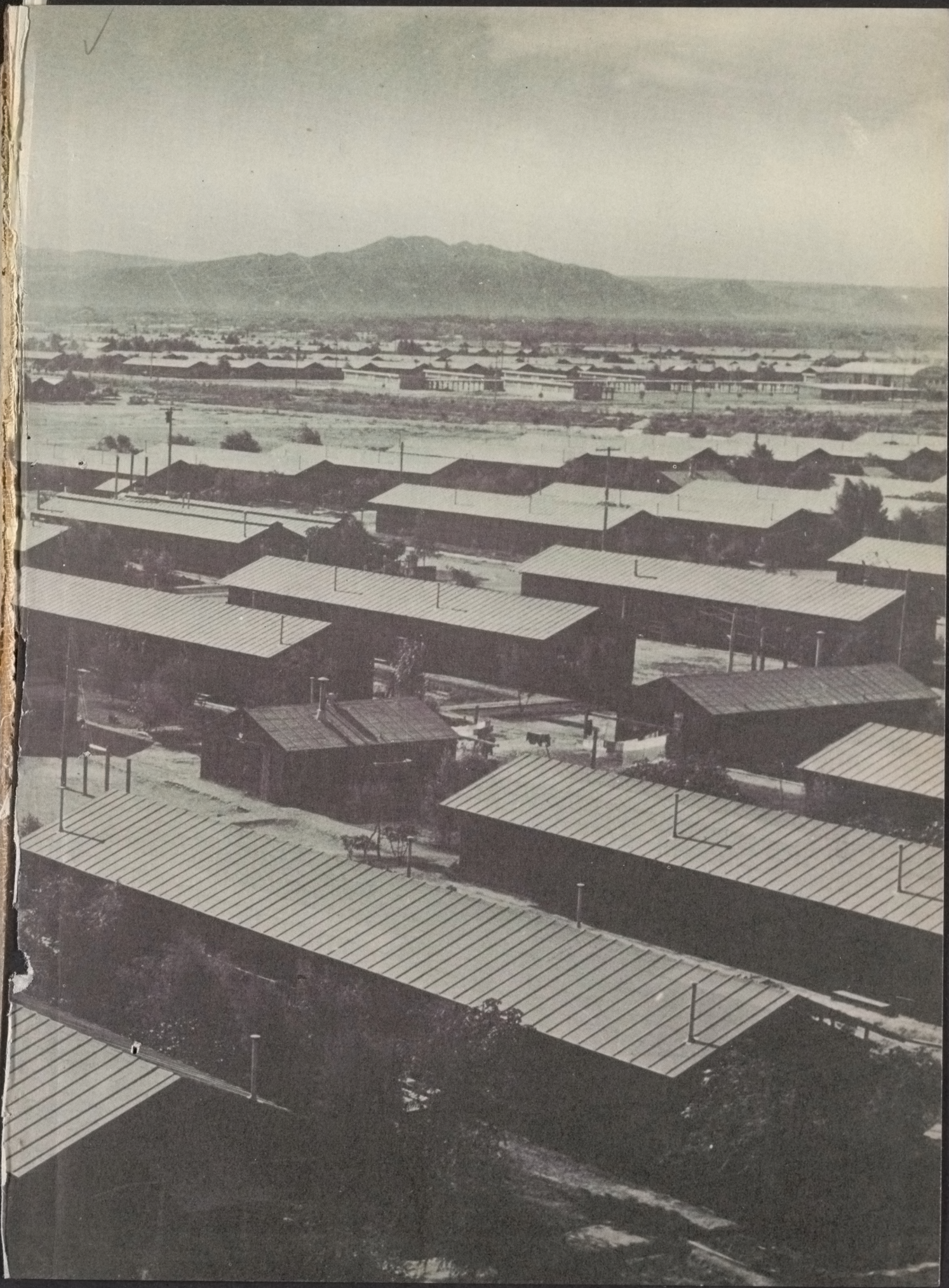
Campus Echoes

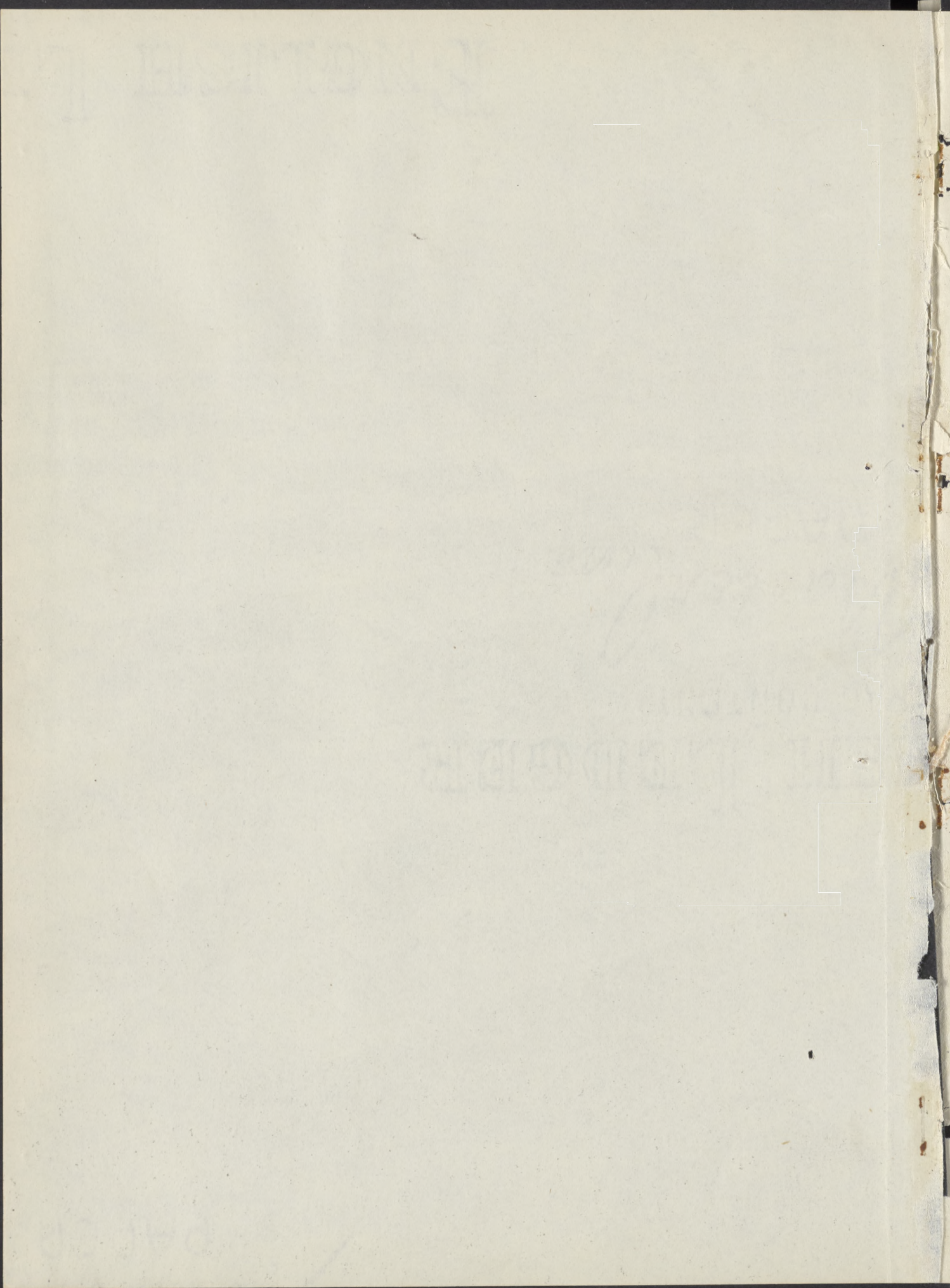
19



45











Yeah, we know there's really no Poston Pete. No one by that name, at least. But Poston Pete really does exist. His name is Shig or Mas or Johnny or Ben. "His" name is also Yoshiko or Susie or Helen or Sumi. Poston Pete is YOU, whether you are an insignificant little seventh grader or a dignified Senior. This is YOUR book, a record of your years at Poston.

Poston Pete

DEFENSE

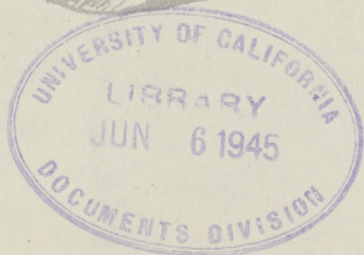
U.S. War Relocation Authority

Campers, 1945 (Parker Valley High)

CONSTITUTION

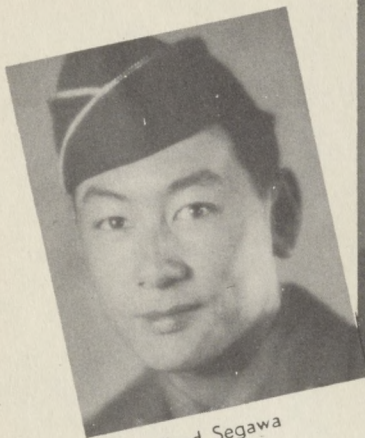
~ PREAMBLE ~

We the people of the United States, in order to form a more perfect union, establish justice, insure domestic tranquility, provide for the common defense, promote the general welfare, and secure the blessings of liberty to ourselves and our posterity, do hereby adopt this Constitution of the United States of America.

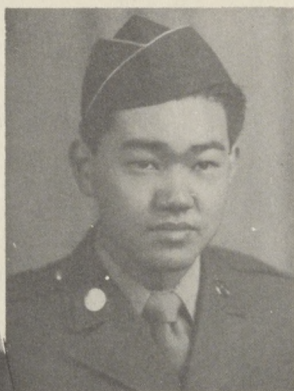


Dedicated to Alumni

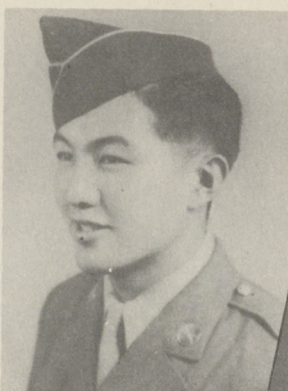
of Parker Valley High School who are serving so gallantly in the armed forces of the United States. To these "go for broke" boys this book is dedicated.



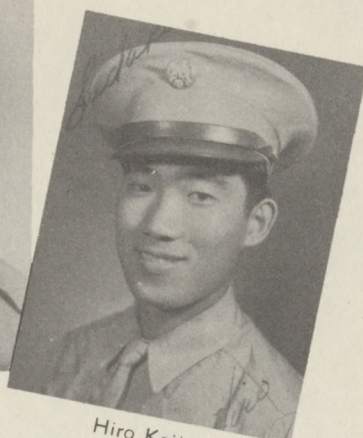
Fred Segawa



Ed Nakaji



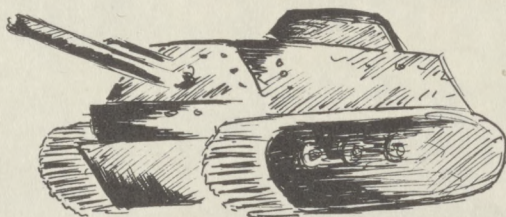
Tots Ishida



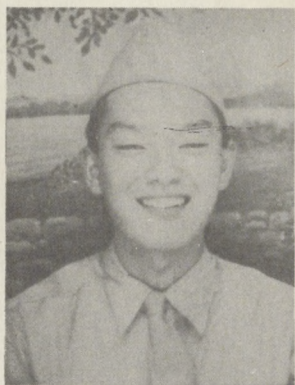
Hiro Kajiya



Bill Nakagawa



Ben Honda



Ernest Hiratsuka



Willie Ogino



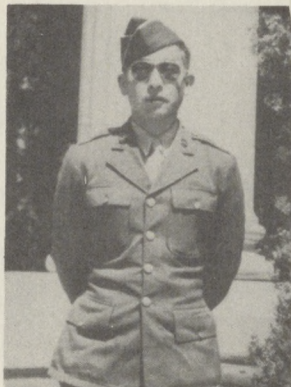
Hideo Tsuchiyama



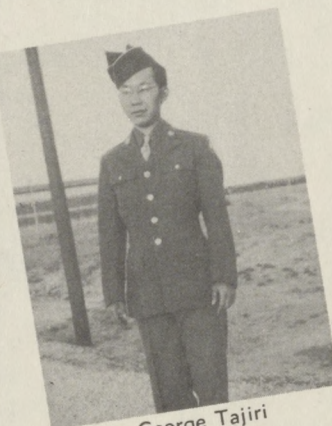
George Shiba



Mino Fujisaki



Lloyd Kurihara



George Tajiri



Kaz Nakamichi

Cadet Nurse
Ruth Furusho
Parker Valley
'44



Miyoko Mikasa

Cadet Nurse
Dorothy Kushino
Parker Valley
'44

Not to be forgotten are the Cadet Nurses from among our alumni of Parker Valley High. Entered in an entirely new field brought about by the present war, they too are playing their part in bringing the war to an end a day earlier.

HONOR ROLL



SGT. TATSUKI ISHIDA '43
SGT. BEN FUKUTOME, FAC.
SGT. HIDEO TSUCHIYAMA, FAC.
SGT. GEORGE SHIBA, '43
T/5 KAY KITAHARA, FAC.
T/5 NOBORU NAKAMURA, '43
CPL. JIRO MUKAI, '43
PFC. ERNEST HIRATSUKA, '43
PFC. LLOYD KURIHARA, '43
PFC. WILLIE OGINO, '43
PFC. POWER SOGO, '43
PFC. GEORGE TAJIRI, '43
PFC. M. UYEDA, '43
PVT. JAMES OKADA, FAC.
PVT. JAMES URATA, '43
PVT. MASAO YOSHIMINE, '43
PVT. KANEHIRO FUJIMOTO, '43
PVT. MINORU FUJISAKI, '43
PVT. TOKUJI FURATA, '43
PVT. BEN HONDA, '43
PVT. HIRO KAJIYA, '43

PVT. MITSU KIRITANI, '43
PVT. GORDY MIYAMOTO, '43
PVT. TOSHIO MIYASHITA, '43
PVT. MOE NOGUCHI, '43
PVT. ISAMU OKAMOTO, '43
PVT. HENRY OTO, '43
PVT. MINORU OYAMA, '43
(Honorable Discharge)
PVT. HOWARD OZAKI, '43
PVT. TOM TAJIRI
PVT. JUNJI TAKEDA, '43
PVT. HIDEO UCHIDA, '43
PVT. KATTIE UYEJI, '43
PVT. FRANK WATANABE, '43
PVT. GEORGE YAMAGATA, '43
PVT. YASUO HASHIMOTO, '44
PVT. JOHN HAYAKAWA, '44
PVT. JOHNNY SAKAMOTO, '44
PVT. FRED SEGAWA, '44
PVT. HITOSHI SHINODA, '44



IN MEMORIAM -- MARY NAGATA

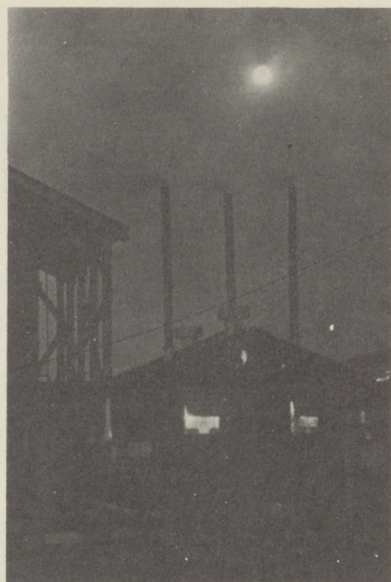
Mary

Against the black hood of night
Twinkled the stars,
Like the lights in Mary's dark brown eyes.
Jupiter, Saturn, and lovely Venus
Watched over our quiet world.
A bubble of joy seemed to swell within me
As I thought of Mary,
Remembering the glowing halo of happiness
Which surrounded her,
And gathered others into its warmth.

* * * *

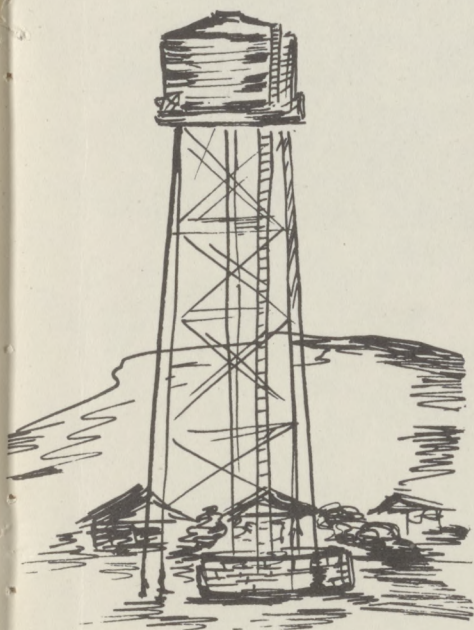
Wispy clouds trailed across the face of a troubled moon;
A thin mist enveloped the stars.
It grew blacker, denser.
The bubble broke!
My soul was heavy and grey
And then I remembered
The heart-shaped face with laughing eyes
Now gone forever

R. T.



Looking back over our two years in a relocation center, many things will remain outstanding in our memories—looking forward to our weekly movies, the daily mail truck, the ringing of the mess hall bell, and the river trips and to the mountains.

We hope to help you remember these things with the pages we are presenting here in the "Campus Echoes."

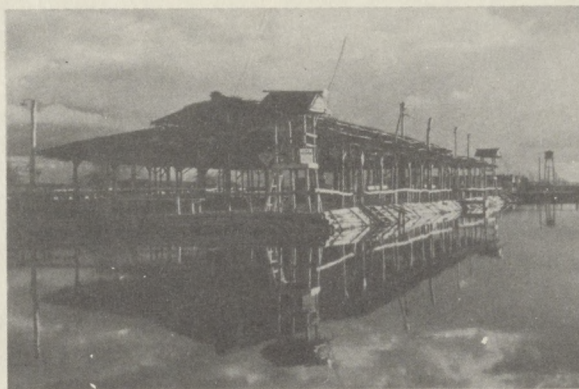




MR. DUNCAN MILLS
Project Director



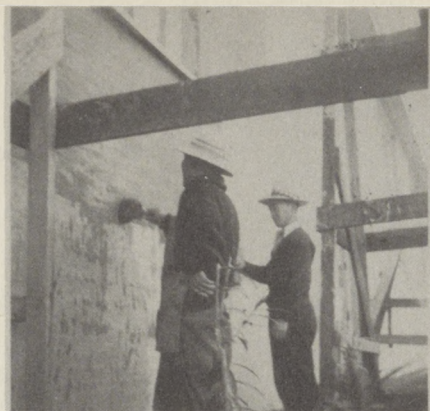
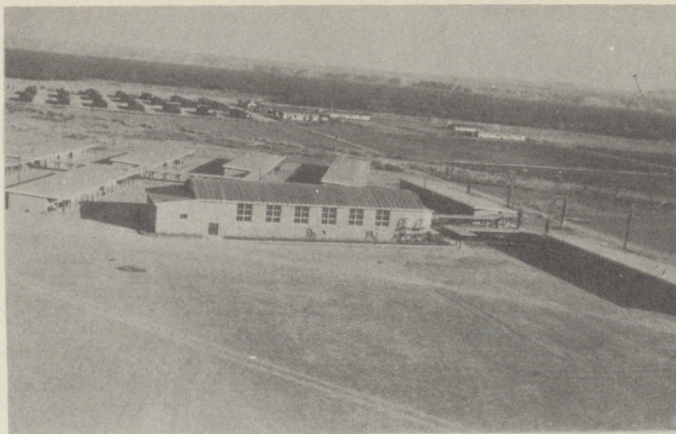
Unit I



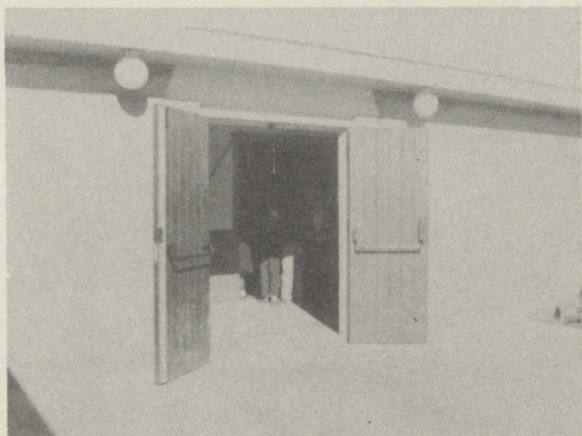
Unit II

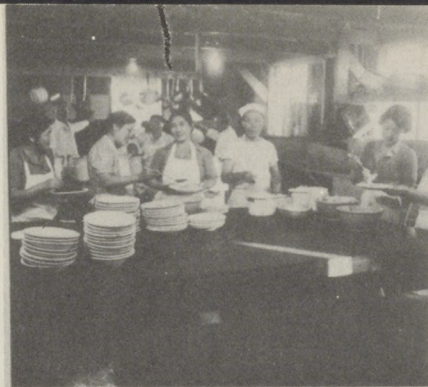


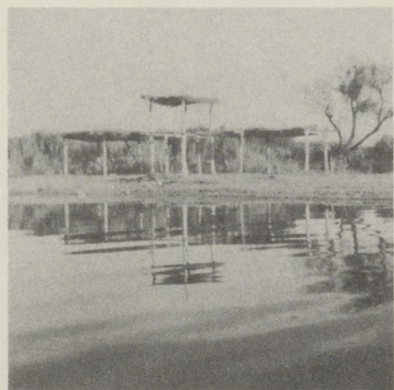
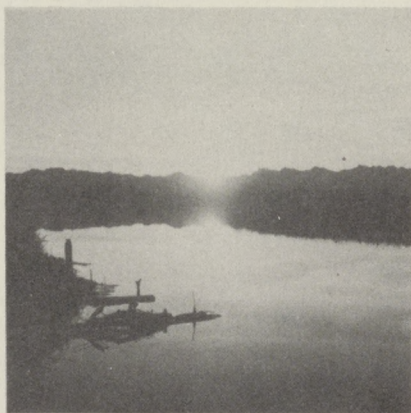
Unit III

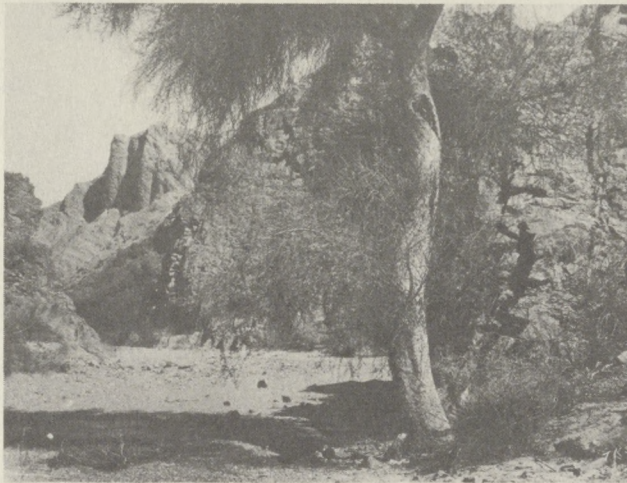
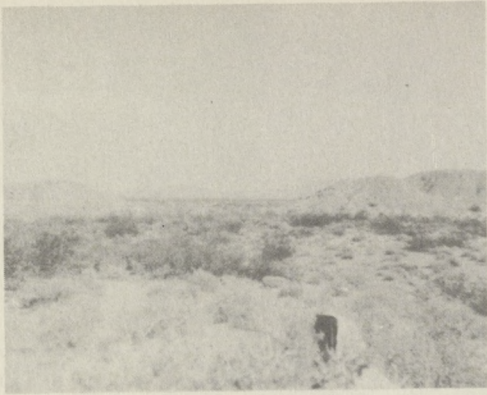


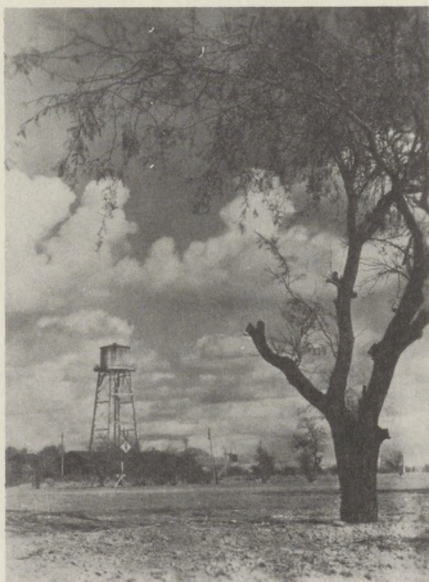
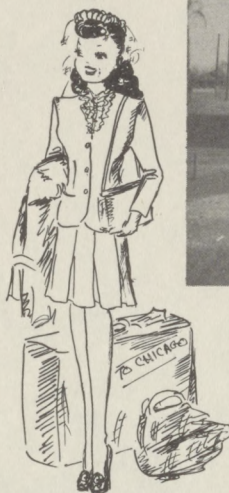
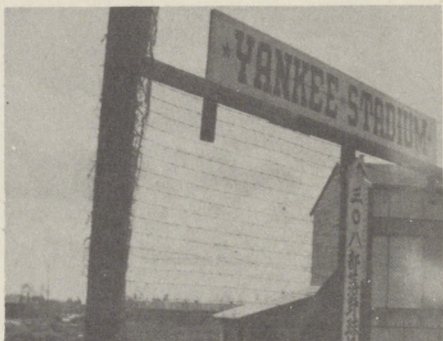
Crude was the beginning of our campus life in tarpaper barracks. Starting with the bare essentials of education, we have built our school up to what it is now, a scenic palm-fringed campus with recreational facilities, adobe classrooms, a spacious auditorium and a staff of competent teachers.

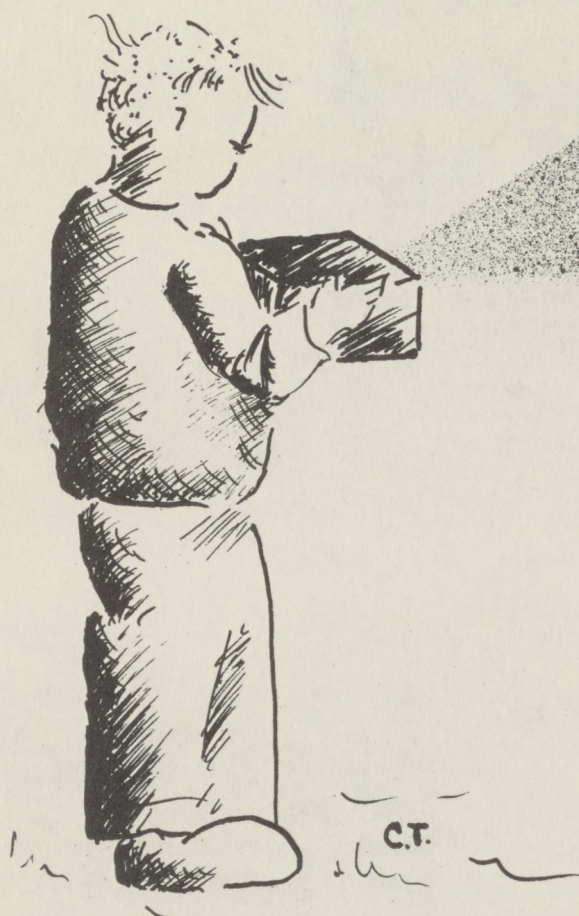


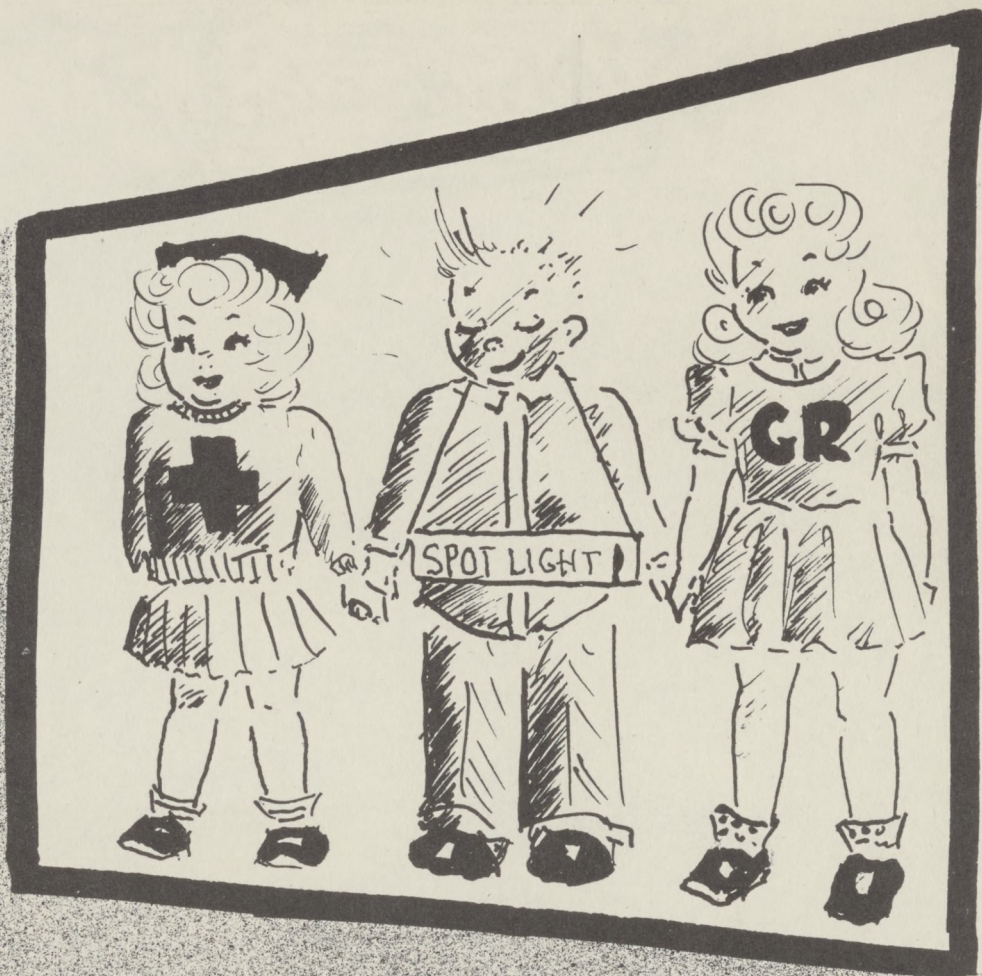












Seventh grade....

—gosh, was I scared? You know it!
Everybody pushing me around, not
knowing where to go at the right time.
Sad case—that was me!

Please sign



Bottom row: Sachiko Eguchi, Betty Mae Fujina, Shirley Fuyuyama, Vera Furubayashi, Shinobu Hamaguchi, Mary Fujimoto, Kuniko Hori, Yoko Kamiura, Anna Kikuchi, Kazuko Ikuta.
Top row: Kiyoko Horibe, Alice Ida, Tayeko Iguchi, Yoshiko Inouye, Mutsuko Kiyomura, Yuriko Kawasaki, Aiararic Kishi, Takeo Hirata, Ralph Kurihara.



Future wives



My neck!



Carpenter—up



Second Semester Officers



Bottom row: Akiko Nishida, Mary Oto, Wakae Sato, Tomako Kubo, Shirley Fukuyama, Yoko Uota, Machiko Yokota, Sumiko Yamada.
Top row: Hiroshi Sawasaki, Tommy Ozaki, Michio Himaka, Mikio Nishida, James Gotshi, Yoshio Hirata, Hideto Ujita, Mitsuru Hamai, Jack Ida, Shig Tsuchiyama.



"Smile please!!"



"Pretty ain't it?"



"Going up!!"



Top row: Janice Kishi, Fumi Yoshii, Amy Sakamoto, Shirley Sanda, Etsuko Nishimoto, Riyo Sugaya.

Middle row: Jimmy Yanagihara, Yoneo Takehara, James Kida, James Mizuno, Eddie Sakai, Norman Oda.

Bottom: Shunzo Takeda, Jack Watanabe, Toshiyuki Takesaki, Jimmy Yasuda, Hiroshi Yoshida, Yoshito Suwa, Jimmy Kido.



"Hey Hank . . ."



"More rain!!"



Oh, Potato

SENIOR



Top row: Tei Trokey, Advisor; Jane Sakamoto, Betty Kushino, Hiroko Hayashi, Susie Shinohara, Yoneko Okamoto.
Bottom row: Reiko Nakano, Hideko Tanaka, Yoshiko Miura, Momoe Kamiura, Keiko Yoshida.

JUNIOR



Top row: Tayeko Iguchi, Yuriko Kawasaki, Mary Ota, Etsuko Nishimoto, Fumi Yoshii, Yoko Kamiura.
Middle row: Miss Blossom Vigdor, Advisor; Vera Furubayashi, Kiyoko Horibe, Alice Ida, Wakae Soto, Akiko Nishida.
Bottom row: Amy Sakamoto, Anna Kikuchi, Shirley Sanda, Tamako Kubo, Janice Kishi.

GIRL RESERVES



"So-little companion"



"Pepsodent smiles"



"This way please"

Jr. Hi. SPOTLIGHT

Vol. 4 No. 16

Parker Valley H.S.

March 8, 1945

ED AND STAFF SHOT

Editor Shig is a little amused as he watches Eddie, Potato, Jim, and Hiroshi. What a bunch of bums!

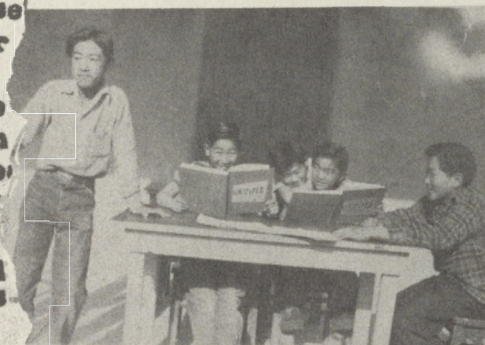
Of course those four fellows around the mimeograph had no idea that their pictures were being "took", especially Alvin. It looks as if Simp and the Hirata twins see something funny--they're usually so serious.

The girl reporters look as if they were all posing for a tooth paste ad, or maybe they are just happy because there is a blond in their class, (how about it Tamako?) The gossip editor is right out in front, but she won't have her name mentioned.



SPOTLIGHTERS ARE SUBJECTS IN PHOTO

Members of the Spotlight gang who had their pictures taken the day the photographer came to Parker Valley were: Editor Shig Tsuchiyama and his working staff "Potato" Ujita, "Hero" Sawasaki, Yoneo Takehara, "Simp" Takeda, Jack Watanabe, Jim Yasuda, Jack Ida, Miss B. Washler, Tayeko Iguchi, Anna Kikuchi, Tamako Kubo, Amy Sakamoto, Shirley Sanda, Mary Ota, Wakae Sato, Tsuruko Hosaka, Teruko Hosaka, and Akiko Nishida. Just a little late for the picture was boys'

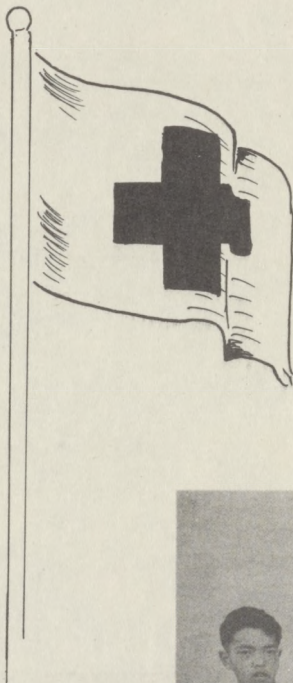


Mary and Teruko are both in the shade, maybe they don't want the editor to see them and give them some tough assignment. Loose fight!

sports editor, Alvin Light. The staff meets during sixth period every day, and they say making a paper is no snap.

Wherever there are wars, floods, disasters, the Red Cross is at hand to do its part in helping relieve the suffering of the unfortunate.

Here at Parker Valley High the Junior Red Cross is also doing its part in furthering the cause of the Red Cross work throughout the world.

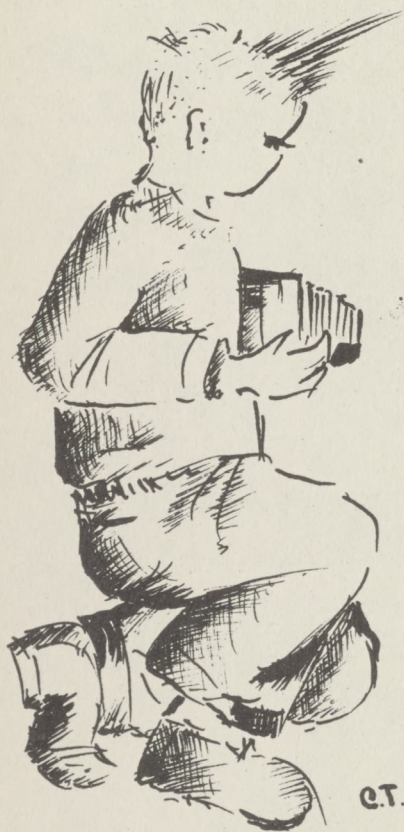


Miss J. Linfield

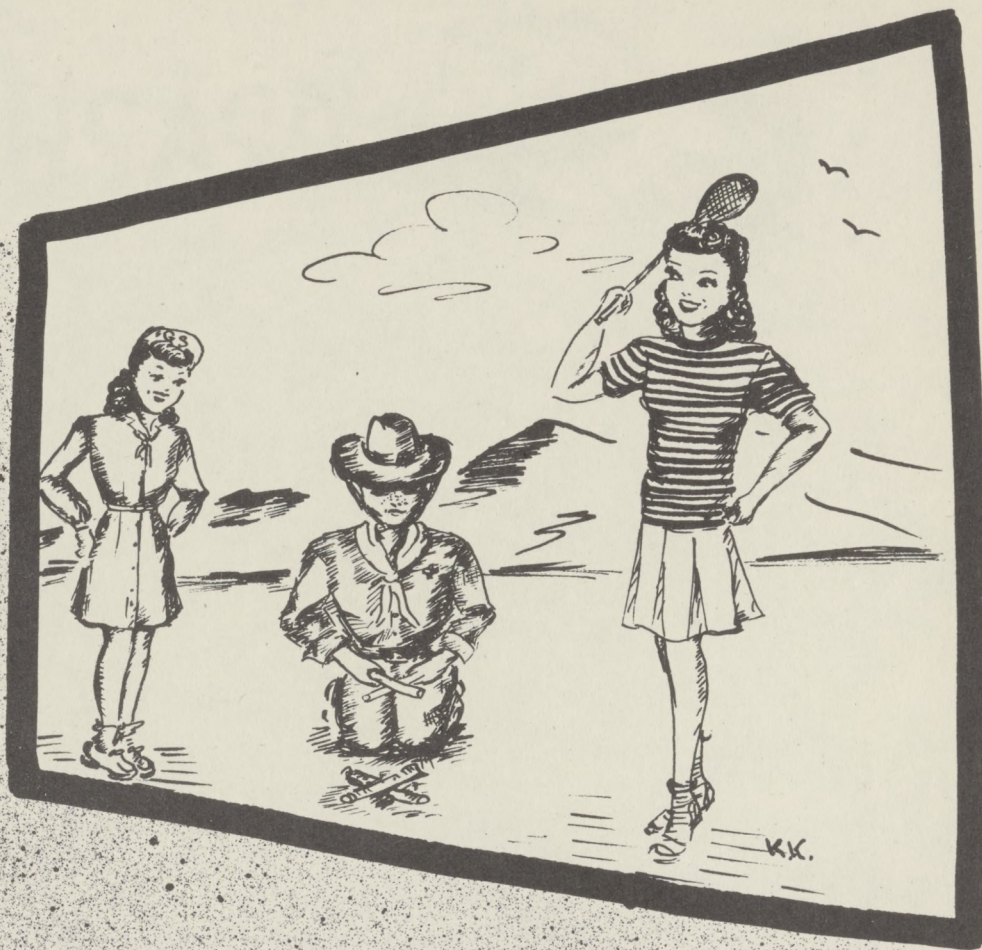


Top row: Michio Himaka, Bill Mukai, Miss Linfield, Sadako Noguchi, Mary Nagata, Katherine Kusumoto.

Bottom row: Nobuko Mayeda, Wakae Soto, Mary Nakagawa, Mollie Uyeji, Florence Tanaka, Momo Kamiura.

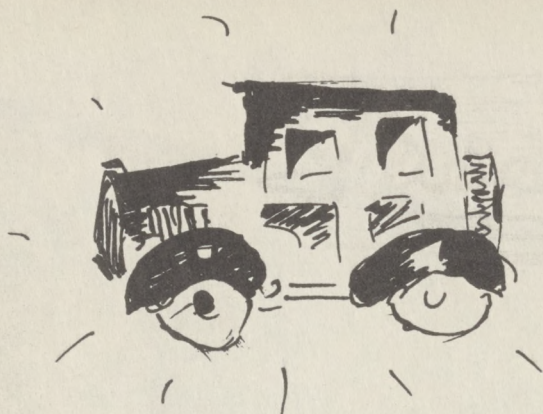


C.T.



An eighth grader,

yep, that's me! Still didn't know much, but liked to make the seventh graders think I did. A "big cheese" in junior high! (Oh, yeah!)



GRAPHS



Left to right: Hideko Tanaka, Mickey Shimpō, Satoko Yamashita, Tokuko Fujimoto, Yoneko Okamoto, Teruko Hosaka, Mabel Fuchiwaki.

Second row: Mitsuko Koba, Lily Yamagata, Daisy Kakoda Grace Yamada, Nobuko Mayeda.

Third row: Jimmie Uchiyama, Ray Harada, Yukio Akahoshi, Kenneth Yamada, Minoru Araki, Saro Asami, Shikuji Hamasaki.



Hey Elsie, you don't belong there!



Good deed for the day



Cuttin' the dirt



Where's your Pepsodent smile, girls?



First row: Helen Abe, Mary Fujimoto, Laraine Kuwada, Agnes Kodama, Momoe Kamiura, Michiko Kodama, Ayako Morikawa, Joy Miyoshi.

Second row: Betty Kushino, Hiroko Hayashi, Mae Kitahara, Yoko Okamoto, Yoko Kawasaki.

Third row: Jimmie Hashiguchi, Kei Hirase, Satoru Matsushita, Alvin Light, Takashi Mayumi, David Kikuchi, Edward Matsuda, Jack Mizuki.



Don't put it up too high Sets.



Get to work Mr. Hirata



Stitch, stitch, stitch



Seated: Keiko Yoshida, Miyoko Yokota, Masako Kawamoto, Fumiko Tsuchiyama, Sumiko Wumino, Betty Kurihara, Junko Uofa, Jewly Shiba, Kazuko Takeda, Mary Sugaya.

Standing: Hitose Suwa, Waco Shintani, Bobby Taguchi, Normen Noji, Joe Takehara, Moto Tsuneyoshi, Norman Sakamoto, Richard Tanaka, Akira Nishimoto, Harold Mikasa.



Oh, the sun shines bright—



Hey! No secrets! —



Gosh, this is work!



BADMINTON

These badminton champs are:

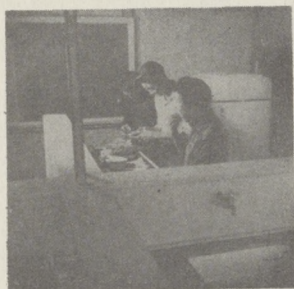
Left to right seated: Michiye Nakagawa, Susie Shinohara, Elsie Sog, Yasuko Ozawa, Emiko Kodama, Iyoko Sasaki, and Mrs. Tei Trokey, Advisor.

Standing: John Arakawa, James Yamamoto, Tom Light, Masato Matsuo, Kenji Ozaki, Ken Miura, Kunio Nagata, Shinobu Takeshita, and Johnson Mitsuoaka.

COOKING CLASS

The future chefs are from left to right seated: Bill Mukai, Raymond Uchiyama, and Mas Omachi.

Standing: Kozo Ohara, George Fukuhara, and Tadashi Matoi.



— K. P. —



Teary-eyed



mmm----



Aw, look up Johnnie

GIRL SCOUTS



First row: Laraine Kuwada, Mickey Shimpco, Yoshiko Inouye, Shirley Fukuyama, Betty Mae Fujino, Molly Fujino, Florence Tanaka, Mitsu Akahoshi.

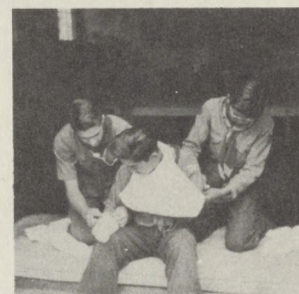
Second row: Miss Barbara Washler, Advisor; Daisy Kakoda, Lily Yamagata, Michiko Kodama, Machiko Yokota, Setsuko Naito, Lucy Tanaka, Yotsuko Sakaji, Miss Alice Ozaki, (Assistant Advisor), Grace Yamada.



Our Rendezvous



Retreat



Ow!! Ow - - -!

BOY SCOUTS

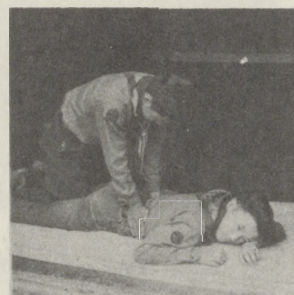


First row: James Mizuno, Tsugio Yoshii, Bobby Taguchi, Kenny Yamada, Yukio Akahoshi.

Back row: Edward Matsuda, Norman Oda, Taro Kodama, Thomas Light, Shig Naito, Tadashi Matoi, James Yamamoto.



At the old meeting place



Ugh!!

ORCHESTRA



Front row: Violins—Mary Nakagawa, Yasuko Ozawa, Pauline Date; Clarinets—Fusatoshi Fujimoto, Tom Osato; Trumpets—Waco Shintani, Johnnie Togioka, Toshi Sakow.

Back row: Violins—Michiye Nakagawa, Lucy Tanaka, Fumiko Yoshii; Clarinet—June Kiyomoto; Piano—Elaine Hibi.



First row: Florence Tanaka, Alice Uchiyama, Mary Iguchi, Katherine Kusumoto, Mrs. Mabel Hibi, Instructor.

Back row: Chizuko Takeda, Tomi Yokota, Itsuko Saito, Jean Ozawa, Matsuko Miyamoto, Sumiko Takeda, Toshiko Fujimoto.





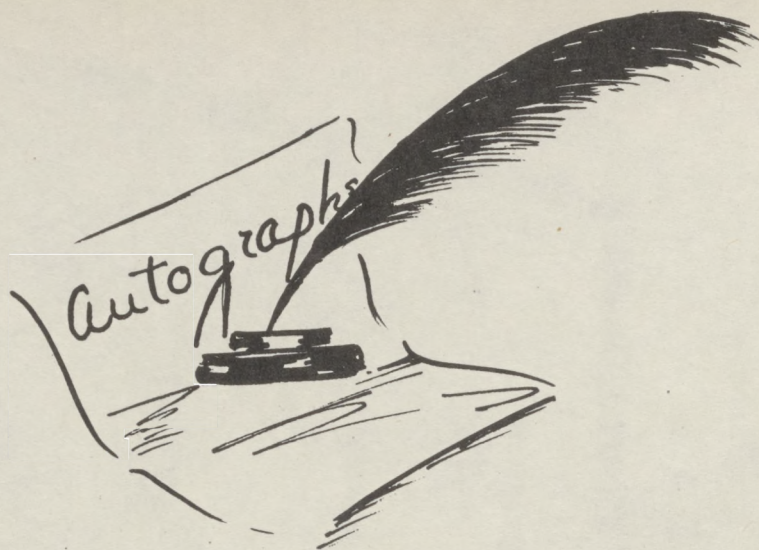
C.T.

7



The ninth grade,

and I finally got a title. I was a full fledged freshman in Parker Valley High School . . . Cough! Cough! (Must have beat my chest a little too hard on that one!)





Seated: Jane Uchiyama, Yukiye Takasaki, Jane Sakamoto, Susie Shinohara, Frances Toyama, Ada Nishida, Elizabeth Kikuchi, Terrie Kurihara, Aiko Kitahata.
 Second row: Yoshiko Miura, Fusako Miyamoto, Amy Yamada, Jean Kishi, Helen Kusumoto, Yotsuko Sakaji, Lucy Tanaka, Florence Tanaka, Florence Sakata.
 Third row: Kei Osato, Shig Ikuta, Shoji Sugaya, Frank Koide, Toshi Sakow.



President Herbert Abe



V. Pres. Yoto Takeshita



Sec. Fusatoshi Fujimoto



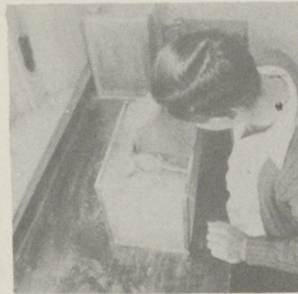
Treas. Elizabeth Kikuchi



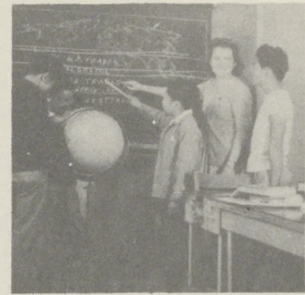
Seated: Masako Ishida, Molly Fujino, Tsuruko Hosaka, Elaine Hibi, Mariko Kawaguchi, Emma Kodama, Fusaye Kubo, Lily Iguchi.
 Second row: Ben Mayeda, James Inouye, Harry Ichijji, Isamu Kawahara, Charles Mano, Tom Hasebe, Shig Naito.
 Third row: Mr. Jackson (instructor), Buddy Ashida, Herbert Ade, Fusatoshi Fujimoto, Sawaji Hatakeda, Bobby Fukuhara, Alfred Horibe, George Inouye, Shin Inouye, Taro Kodama.



Looking over preserves



Aw—! Leave me alone



Softly blew the breezes. Why?
Ask the General Science Class.



Left to right seated: Dorothy Nakagawa, Kazuko Uota, Mary Yasuda, Yuriko Watari, Vickey Inouye, Setsuko Naito, Michiye Nakagawa, Maki Shinoda, Katherine Ida, Shizuko Hirata, Emiko Hamai.

Left to right standing: Susumu Nakagawa, Nish Yamamoto, Mits Ohara, Ken Oye, Joe Ohara, Tsugio Yoshii, Ben Segawa, Takashi Sawasaki, Yoto Takeshita, Ned Nii.



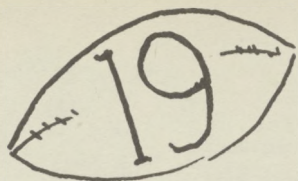
Oh boy! New furniture
in the making.



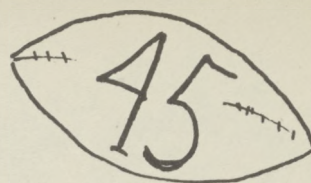
W. P. A. Inc.



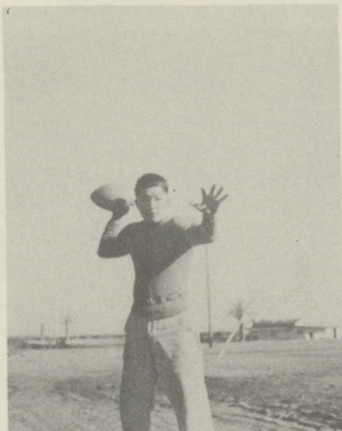
What's that? Tapeworm?
Oh—taffy.



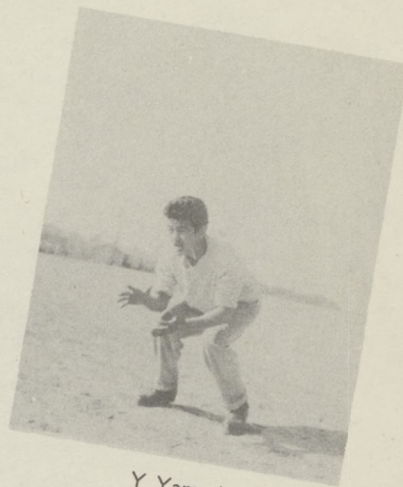
FOOTBALL



M. Tanizaki

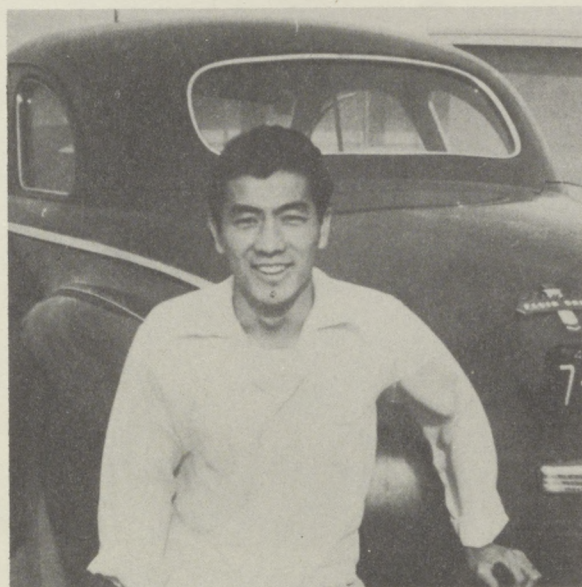


C. Shinohara



Y. Yamada

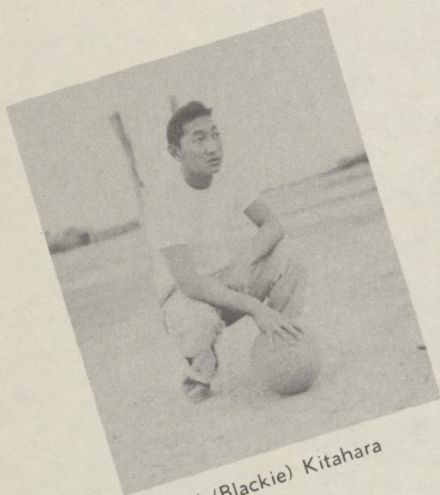
Our school did not form a football team this year, because of the shortage of young husky fellows. We did play however, for fun and good sportsmanship, against a group of Auto Shop boys.



Coach Mitsuoka



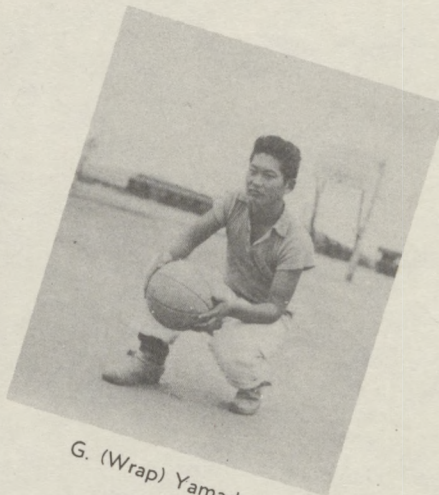
BASKETBALL



N (Blackie) Kitahara



Tak Yokota



G. (Wrap) Yamada

I remember the days, when we used to watch the Senior High School classes play basketball. The classes gave each other keen competition, and they struggled mightily to capture the campus title, "The Mightiest."



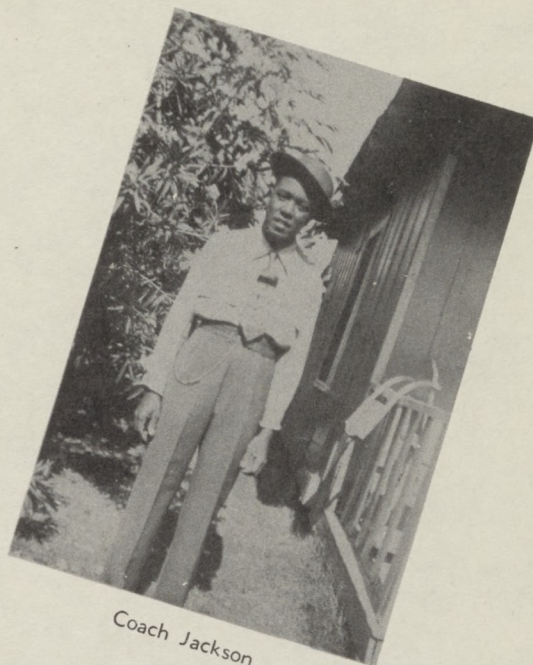
Up, up, up



A ah . . . ah . . . ah

BASEBALL

	W	L	T
FIREMEN	8	0	0
YANKEES	3	3	2
ROOKIES	3	3	3
ROKU	2	6	0
ASAHI	1	5	2



Coach Jackson

In camp, we played baseball in the fall and in the spring. It was one of my favorite sports, and some of the fellows were plenty good. Mr. Jackson—an all-round athlete—helped us in several sports.

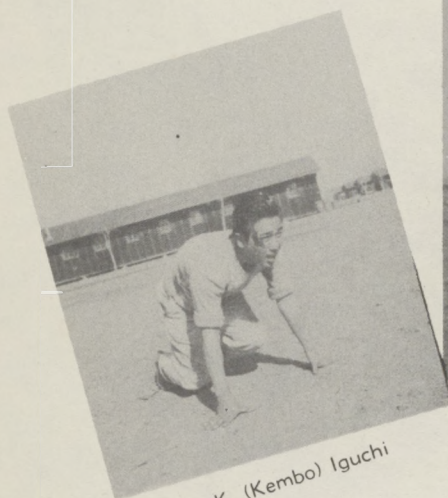


Ben Kitahata

T (Yangu) Honda

Atsushi J. Inouye

TRACK



K. (Kembo) Iguchi



S (Vitamin) Takeshita



Kozo Ohara

Results from the track teams that entered into the intercamp league were fairly good.



Top: Coach Jackson, G. Fukuhara, F. Koide, J. Hosaka, M. Omachi, S. Inouye, K. Ohara, J. Ohara, B. Kitahata, J. Yamamoto, Coach Mitsuoka, N. Yamamoto.

Bottom: M. Kurihara, S. Domon, J. Hasebe, K. Oye, T. Sakow, S. Takeshita, S. Mitsuoka, S. Nakagawa.



Top: Sam Nakagawa, Charlie Mano, Shin Inouye, Ken Oye, Mits Ohara, Taro Kodama, Jim Inouye, Nish Yamamoto.

Middle: Minoru Horibe, Dick Nozawa, Fred Ida, Shig Naito, Tak Yokota, Shoji Uota.

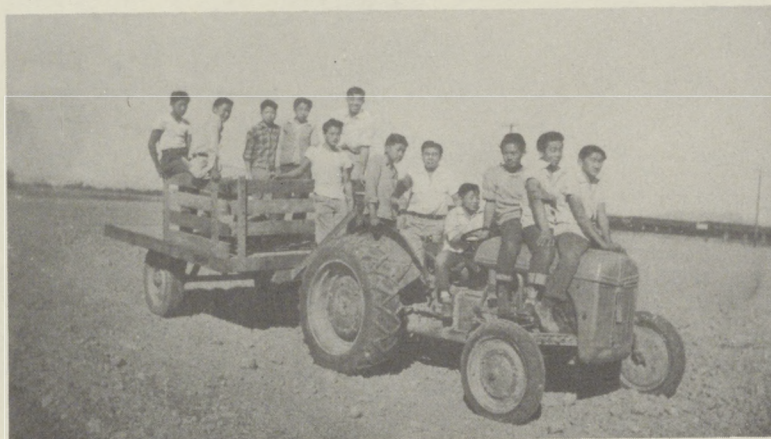
Bottom: Motoi Kurihara, George Domon, Sho Oye, Tsugio Akahoshi, Roy Izushita, Bobby Fukuhara.

A G BOYS



The "Golden Egg" Club

We certainly had practical experiences in our Ag class during the school year. Our future farms will be a credit to instructor Harry Minami.



Wake up Wake up!



Doctor of Chickens

GIRLS SPORT

MIDGETS



Top: L. Tanaka, P. Osato, M. Niino, K. Inouye.
Bottom: R. Oto, N. Nishida, J. Kiyomoto.



Hole-in-one



Listen Girls. Ah



Watch the ball, June!



Whoops!

THREE-O-SIX

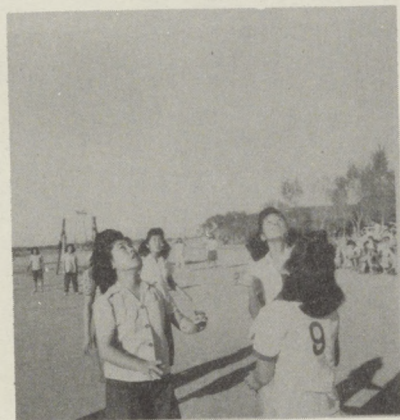


Top: S. Matsuoka, M. Nagata, K. Nagata.
Bottom: A. Ashida, Coach Mitsuoka, Y. Ozawa.

BLOCK 318



Air-brakes



Come down. Come down.



Top: S. Nakagawa, M. Nakagawa, B. Ishida, T. Shimizu.
Bottom: K. Nakamura, A. Sasaki, K. Koga, M. Sasaki.

BLOCK 327



Top: M. Mayumi, K. Okino, S. Hirata, I. Okino, S. Noguchi.
Bottom: B. Nishimura, S. Mayumi, M. Tsuji, S. Kubo.



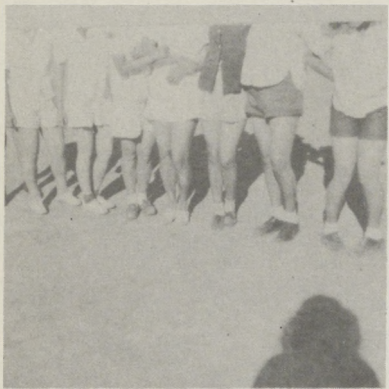
Playing too Johnson?



Where's the ball?



A Little faster please



Them "daikons"



Grrrr



It's a bird, it's a plane, no! it's.....

CAMP 4 CHAMPS



Top: F. Sakamoto, R. Takahashi, Coach Higashi, M. Hatada, T. Trokey.
Bottom: S. Kitahara, M. Koba, T. Hazama, M. Hazama.

BUCCANEERS



Top: M. Kikuchi, A. Kaneyuki, S. Takehara, K. Kusomoto.
Bottom: E. Sogo, M. Fujimoto, V. Takeda, Takehara.

BLOCK 309



Top: J. Tanaka, K. Fujimoto, H. Sekishiro, S. Togioka.
Bottom: S. Kuritani, M. Kanaguchi, A. Ota, E. Morikawa.

The girl's activities were carried out in conjunction with the block teams which included the girls belonging to their respective home blocks. This new system certainly worked out well.

GREENIES



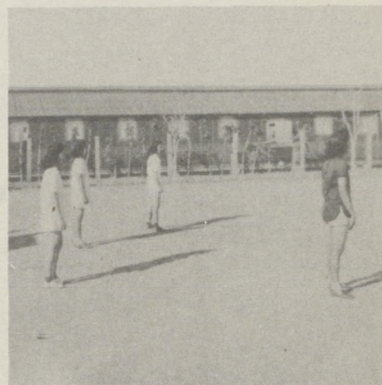
Top: M. Yoshioka, M. Segawa, Y. Sugaya, M. Arata, M. Okuma, J. Hirai.
Bottom: C. Sugaya, A. Yamada, S. Shinmoto (coach), A. Hashiguchi, A. Higuchi.



Bench Warmers



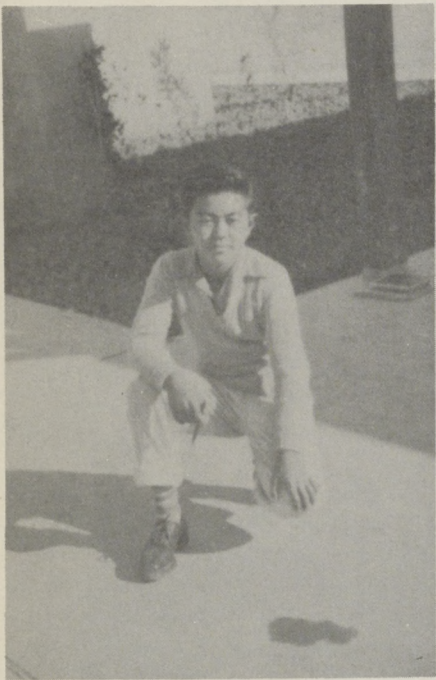
Thou shalt not pass



'hearts on parade



Blow! Blow! Blow!



VICE PRES.
Taka Sawasaki



PRESIDENT
Harry Uchiuji



SECRETARY
Ada Nishida

JUNIOR HIGH STUDENT COUNCIL

The cooperation of the J. S. B. helped in the
advancement of the whole school.



Vidgor and Co.



TREASURER
Hideo Tanaka

8th GRADE

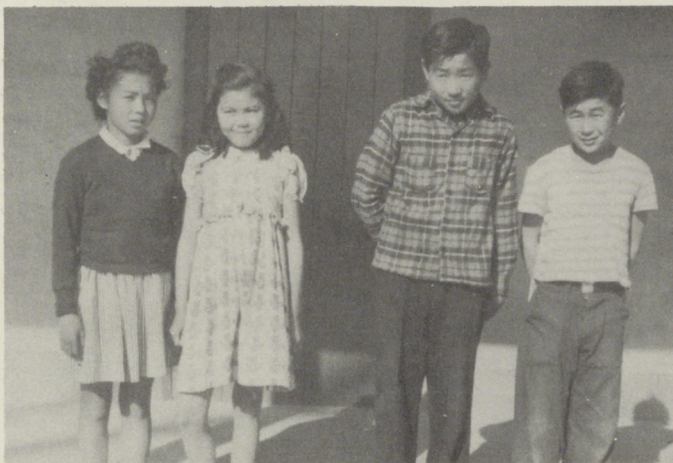


J. Hashiguchi, L. Kuwada,
K. Yoshida, N. Noji



B. Kurihara, M. Araki,
D. Kikuchi, Y. Kawasaki

7th GRADE



A. Sakamoto, T. Kubo,
S. Tsuchiyama, J. Mizuno

7th GRADE



J. Goishi, V. Furubayashi,
I. Nishimoto, T. Ozaki

J H S B
C O R E
R E P S

9th GRADE



F. Koide, E. Kikuchi



PRESIDENT
S. Shinoda

A
S
B



VICE PRES.
K. Kubo

FIRST SEMESTER OFFICERS



Top: T. Matoi, K. Kubo, K. Aoki, T. Light, B. Masukawa,
K. Miura, Dr. Rien, Advisor.

Bottom: M. Nakagawa, M. Ohashi, M. Himaka, B. Ishida,
M. Nagata, E. Sogo, Y. Ozawa.

OFFICERS



SECRETARY
T. Uzuashi

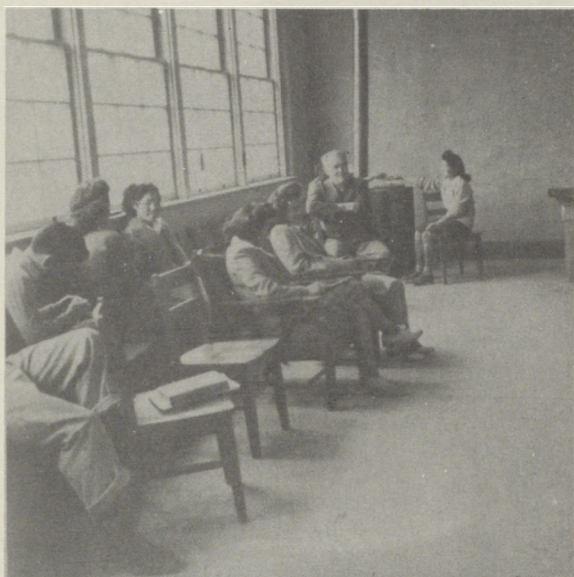


TREASURER
Mary Nakagawa

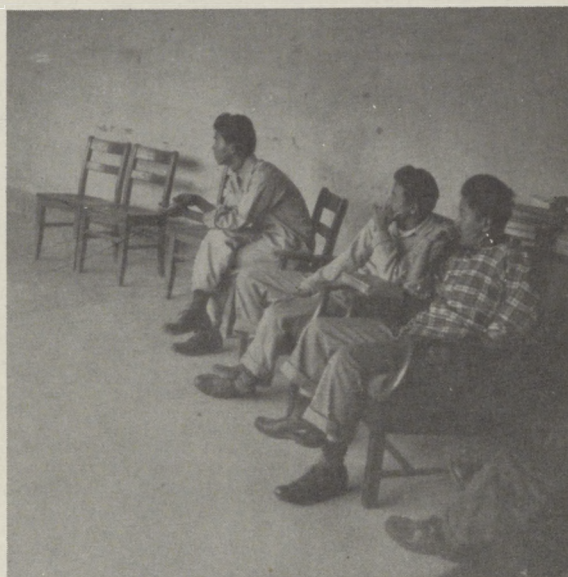


HISTORIAN
Elsie Sogo

Our A. S. B. started out the school year with a bang with Seichi Shinoda as president. Dances and movies were sponsored by the various clubs and activity groups to promote school welfare and create peppy spirit.



Brrrr! Cold, isn't it?



Let me see now . . .



PRESIDENT
Atsushi Inouye



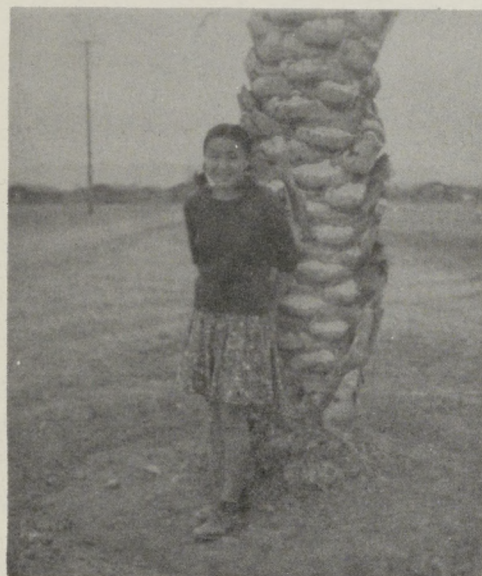
VICE PRES.
Kiyo Aoki



TREASURER
Mary
Nakagawa



SECRETARY
Mollie Ohashi



HISTORIAN
Blanche Ishida

A.S.B. ASSEMBLY TROUPE



THE COUNCIL

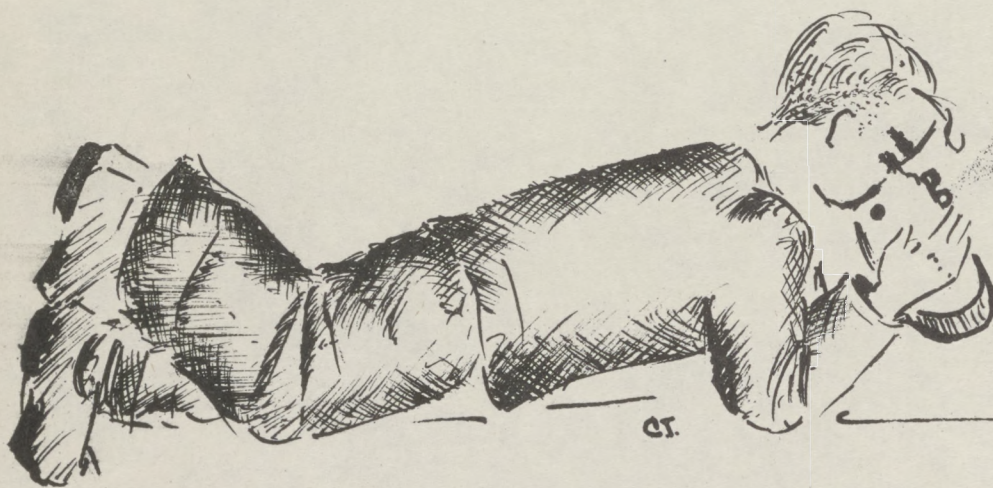


Top: K. Aoki, T. Matsumoto, A. Inouye, K. Osaki, Dr. Rein, Advisor.
Bottom: M. Nakagawa, B. Ishida, K. Kawamoto, R. Shirokawa, M. Furuta, M. Himaka.

We started the second semester with Johnny Inouye at the helm. I had a hilarious time at the expense of the participants in the "Truth or Consequences" program put over by the Council.



ADVISOR Dr. Rein





A soph,

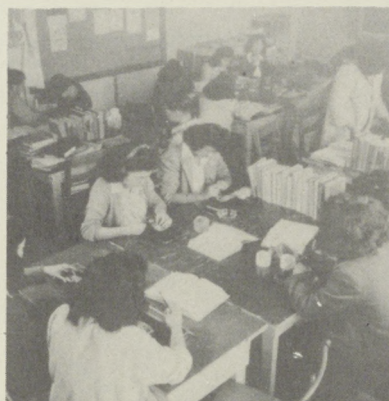
and only two more rungs to go on my ladder of education. (Ladder's sorta wobbly, but it'll get me there, I hope!) Parties, classes, sports—I was really in the groove. Yep, cookin' on both burners!



SOPHOMORES



Top: R. Uchiyama, N. Hamaguchi, M. Omachi, H. Harada, L. Goto, G. Domon.
 Middle: F. Kida, F. Mori, M. Nagata, Y. Oda, H. Oda, S. Nakano, M. Okuma.
 Bottom: M. Akahoshi, T. Fujimoto, M. Hashimoto, M. Kiritani, I. Hirasi, M. Fujimoto, A. Kamiura, E. Mizuki.



Sex or Dissect?



Who Dat Up There?



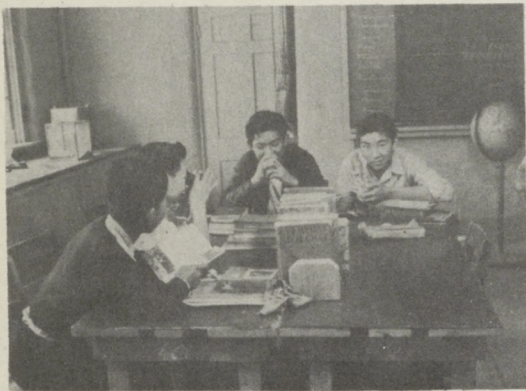
Where's Hays?



Top: R. Izushita, H. Nakamura, T. Minamide, S. Nakahara, B. Mukai, T. Matoi, K. Ohara.

Middle: S. Miyamoto, N. Nishida, J. Kiyomoto, T. Koide.

Bottom: S. Mayumi, B. Yonekura, A. Ota, J. Oto, S. Yamashita.



Smile, Mas, Smile



Advisor Washler and Montgomery



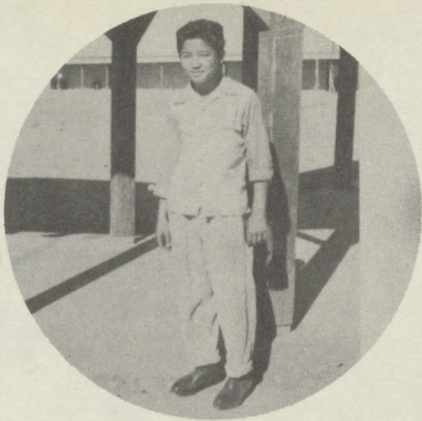
This go over here.
No, over there!



Social Chair
M. Fujimoto



Gulp, Gulp



VICE PRES.
T. Kikuchi



PRESIDENT
P. Kaneyuki



SEC'Y-TREAS.
M. Himaka



Top: G. Nakamura, J. Togioka, H. Ozawa, K. Watari.

Middle: M. Osato, F. Takehara, I. Sasaki, M. Segawa, I. Saito, S. Takeda, P. Date.

Bottom: G.: Hiratsuka, I. Kawamoto, A. Yamada, A. Uchiyama, R. Shiba, J. Tanaka,
M. Himaka.

HI TIMES

VOL. III, NO. 23

POSTON III

MARCH, 1945

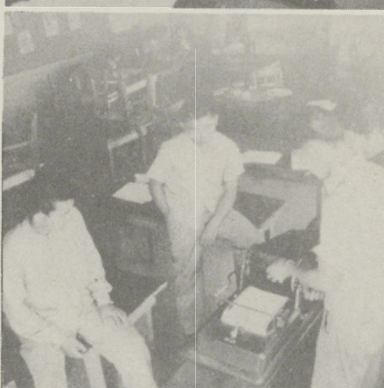
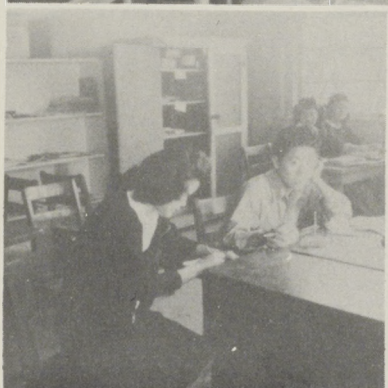
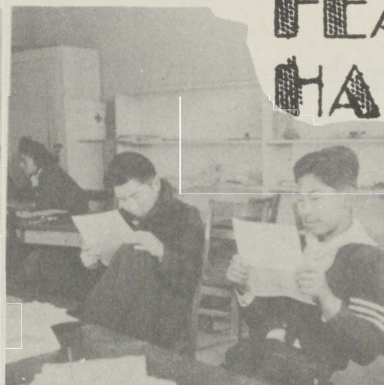
MEMBERS OF HI TIMES SNAP SHOTS STAFF HAD PICTURE TAKEN

Members of the Hi Times staff had their pictures taken by the photographer from Phoenix. Many of the staff are not included.

Those seated on the front row are left to right: Mollie Ohashi, Amy Hashiguchi, Jessie Hirai, Alice Higuchi, June Kiyomoto. Those standing are: Tak Yokota, James Hosaka, Tom Honda, Ken Miura, and Kiyo Aoki.

Camera Shy are: Henry Harada, Roy Iwashita, Henry Yamada, Hiroshi Hamai, Ben Shiba, Susie Kiritani, Sadako Noguchi, Betty Nishiyama.

To these students goes the credit of untiring effort to get the Hi Times published every Friday...to bring you the latest news hot off the Parker Valley High Campus.



Yes, for the very latest thing in news and scandal don't miss your Hi-Times.

Hiroshi would rather look than help, but Tak won't hurt himself.

FEATURE HARADA and AOKI

These are some of the snaps of busy (?) staff members in their favorite haunt--- room 16.

industrious? reporters are Susie, Betty, Alice, June, and Sadako.

Henry (couldn't get along without him) and Pinochle read about the latest romances.

Dynamite is puzzled----

Molly, just patient.

Tak (the great !!!)

Yokota sees if he's

as punk

as ever

trying

to run

off a

late

issue.

helpers

Ben and

NATIONAL HONOR SOCIETY



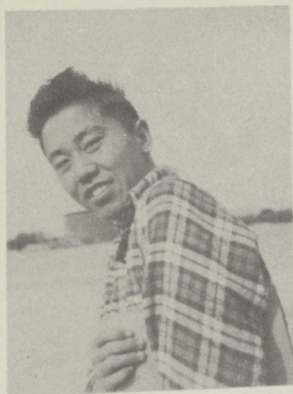
Top row: Toru Matsumoto, Ken Miura, Taro Mukai, Kiyo Aoki.

Middle row: Martha Hays, Blanche Ishida, Michiko Furuta, Reuw Shirokawa, Elsie Sogo, Mizue Himaka, Elaine Morikawa, Ruth Tanaka.

Bottom row: June Kiyomoto, Doris Kuwada, Akiko Kodama, June Hayashi, Ayako Ashida, Mary Nakagawa, Molly Ohashi.



I'm not a brain, so I didn't make the National Honor Society. I didn't mind much though, especially when I saw the new members come to school after their initiation. They were admitted only if the boys would wear pajamas and pigtailed with bright ribbons on their heads. The girls didn't look so bad but they had to wear heavy make-up. I guess they really had fun though when they had their barbecue out in the mesquite.



Ken Miura
Co-Editor



Yoneko Aoyagi
Co-Editor



Barbara Washler
Advisor

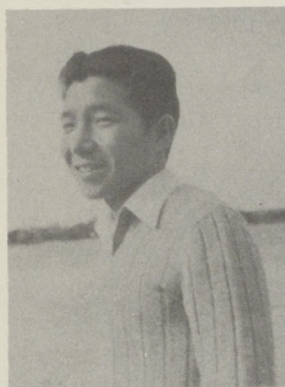


Molly Ohashi
Business Manager

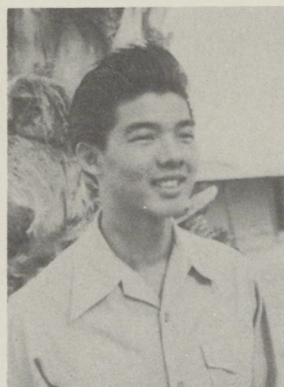


Mary Nakagawa
Assistant Business Manager

Campus Echoes



Kiyo Aoki
Senior Editor



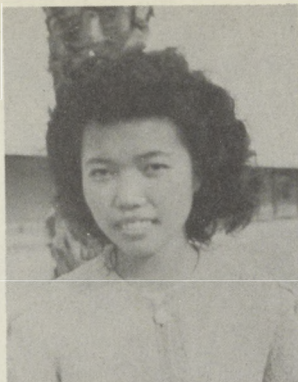
Seichi Shinoda
Faculty Editor



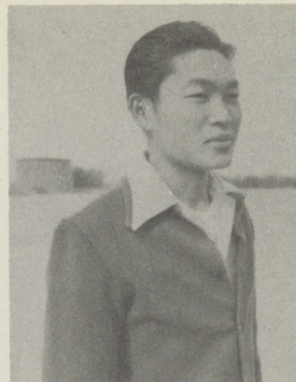
Tomo Uzuhashi
Activity Editor



Kiyoko Kunishige
Art Editor



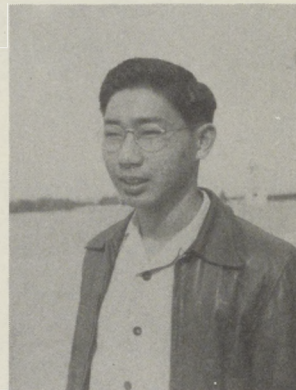
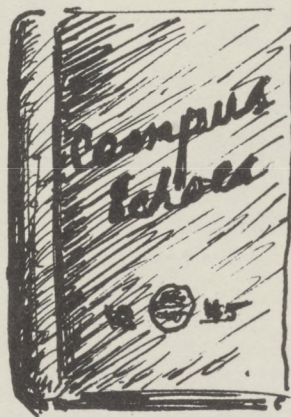
Chizuko Takeda
Assistant Art Editor



Walter Kurihara
Technical Head



Professional !!



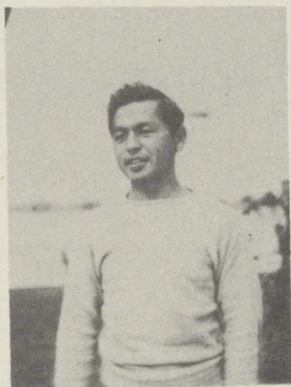
Johnny Inouye
Boy's Sports Editor



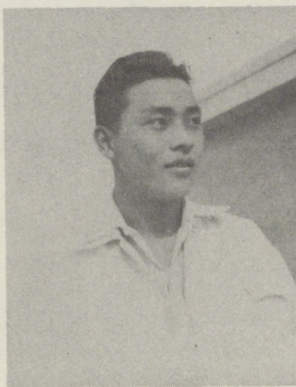
An Amateur . . .



Mariye Okino
Girl's Sports Editor



Mas Tanaka
Ass't Photographer



Bob Masukawa
Photographer



Amy Hashiguchi
Typist

GIRLS LEAGUE



Top row: Bernice Hiratsuka, Mollie Uyeji, Ayako Yamada, Fumiko Takehara, Marian Fujimoto, Mizue Himaka, Naomi Nishida, Pauline Date, Teruko Hazama, June Kiyomoto, Michiko Furuta, Teruko Konishi, Tei Trokey.

Middle: Reuw Shirokawa, Eva Kai, Alice Higuchi, Jessie Hirai, Iyoko Sasaki, Sueko Mayumi, Elsie Mizuki, Alice Uchiyama, Fumiko Fujimoto.

Bottom: Elsie Sogo, Marv Nagata, Marv Morioka, Doris Kuwada, Alice Shimpō, Shizuko Nakatsu, Mary Arata, Amy Hashiguchi, Hamako Hatakeda, Mary Osato.



M. Okino, Sec.; B. Ishida, Hist.; Y. Ozawa, Pres.; A. Hashiguchi, Pub. Mgr.; J. Hirai, Treas.; E. Sogo, V. Pres.; T. Trokey, Adv.



T. Trokey, Adv.; S. Nakagawa, V. Pres.; R. Oto, Hist.; D. Kuwada, Sec.; E. Sogo, Pres.; Y. Ozawa, Treas.; N. Nishida, Sports Mgr.; J. Kiyomoto, Pub. Mgr.



What? New Styles?

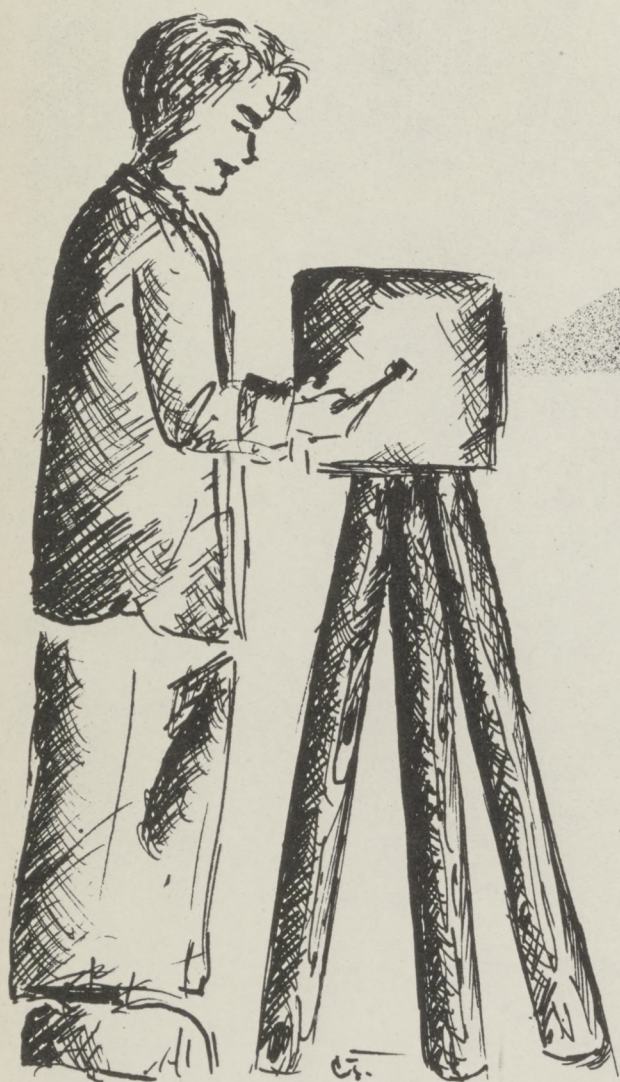
PERSONALITY QUEEN AND KING

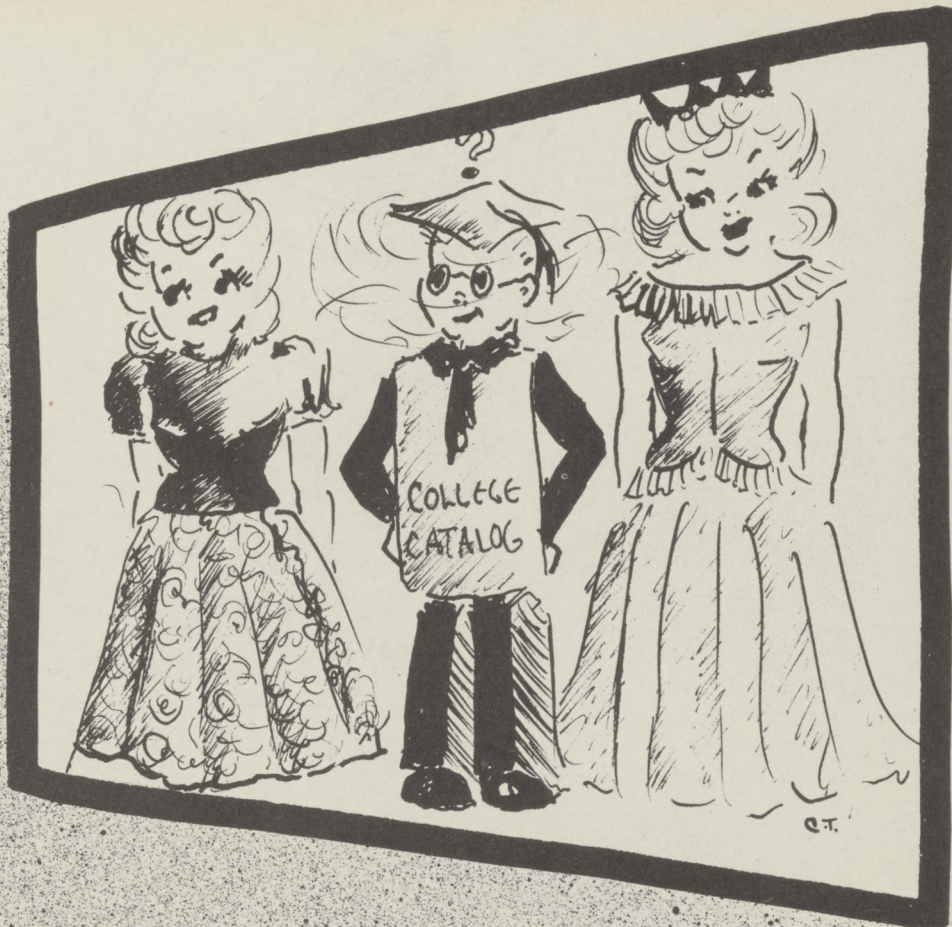


Helen Ozaki

Hank Yamada

I always had a good time when Hank and Helen were around. Who didn't! I guess no one was surprised when they were chosen "Personality King and Queen" for the year. Two other swell kids, Kaizo Kubo and Kaz Kawamoto were runners up.





Give up, that was me!

A Junior—gettin' along good with the "babes" and maybe even a few teachers. Yep, a little cocky maybe, but goin' strong!



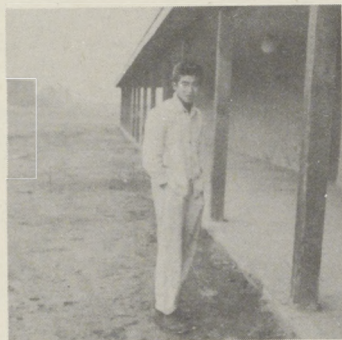
JUNIORS



Top row: George Fukuhara, Dick Nozawa, Kazuo Nii, James Hosaka, Bob Masukawa.

Middle: Miss Linfield, Kazuko Fujisaki, Rose Hashimoto, Marian Kikuchi, Michiko Niino, Sadako Noguchi, Betty Nishiyama, Sumiko Nakagawa, Blanche Ishida, Elizabeth Imai.

Bottom: June Hayashi, Zyako Ashida, Alice Higuchi, Gladys Kushino, Chiyoko Matsumoto, Tomiko Mikasa, Fumiko Kodama, Akiko Kodama, Sumiko Hamasaki.



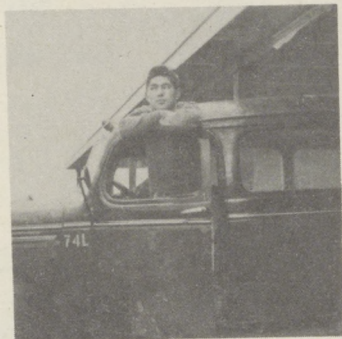
Chet Nakano
Vice President



Hank Yamada
President



Doris Kuwada
Secretary



Tom Honda
Boy's Social Chairman



Marian Kikuchi
Girl's Social Chairman



Top: Kaizo Kubo, Shoji Uota, Fred Ida, James Yamamoto, John Arakawa.
 Middle: Mary Iguchi, Jean Ozawa, Haruko Kodama, Sakie Takehara, Tomiko Kido,
 Ruth Tanaka.
 Bottom: Mae Takayama, Dorothy Yamamoto, Alice Shimpō, Helen Ozaki, Rose
 Oto, Michiko Sakaguchi.



Say, There's a Junior !!!



Our School Bus



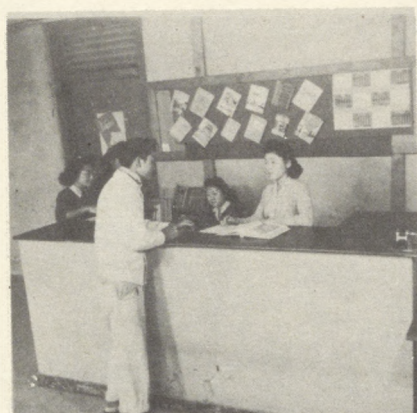
Yum!! Yum!! The food I mean—



Top row: Hank Yamada, Hiroshi Tanizaki, Nobuo Takasaki, Thomas Light, Tom Osato, Shinobu Takeshita, Mas Matsushita, Kenji Osaki.

Middle row: Roy Iwashita, Sho Oye, George Kunitake, William Shiozawa, George Tsuji, Hajima Yoshii, Ken Miura, Charles Shinohara.

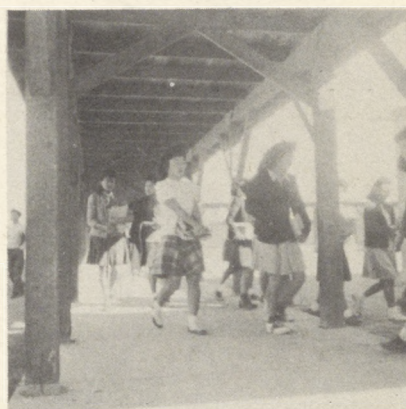
Bottom row: Doris Kuwada, Mary Morioka, Suzuko Nakatsu, Chiyoko Mukai, Yoshiko Yamada, Matsuko Miyamoto, Violet Takeda, Yasuko Ozawa, Elsie Sogo, Katherine Kusomoto.



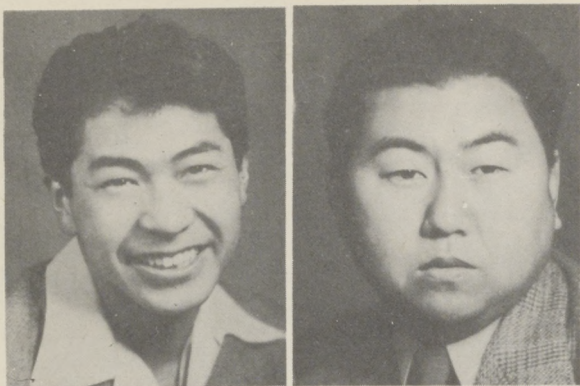
That'll be 2c, Bob . . .



Ladies & Gents . . .



Smile, little one



Paul Arakawa

Dick Watanabe

Members of the office staff became familiar acquaintances with me after my habitual trips to the office for absence and tardy slips. They were industrious, a group which was more or less taken for granted, but whose services were invaluable to a smoothly running school.

The power behind the office workers lay in the hands of the hustling and bustling business managers, for without essential supplies which they took care of, how could the office staff work?

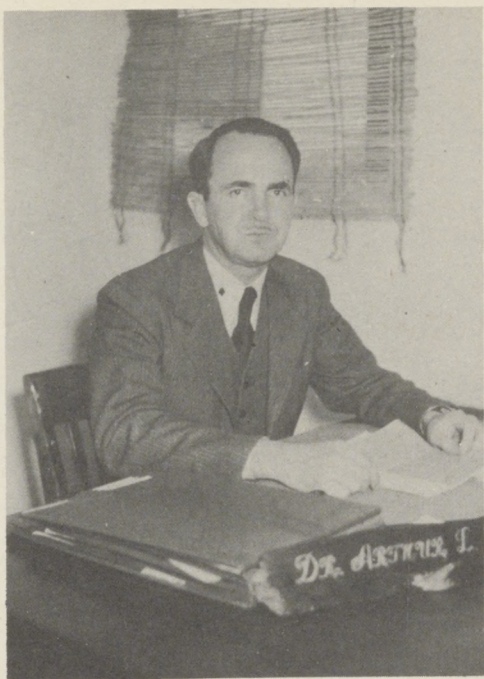


First row: Mary Takasaki, head librarian; Tei Trokey, counselor; Johnson Mitsuoka, copy clerk; Kimika Takemoto, Secretary; Michiko Nakahara, library apprentice.

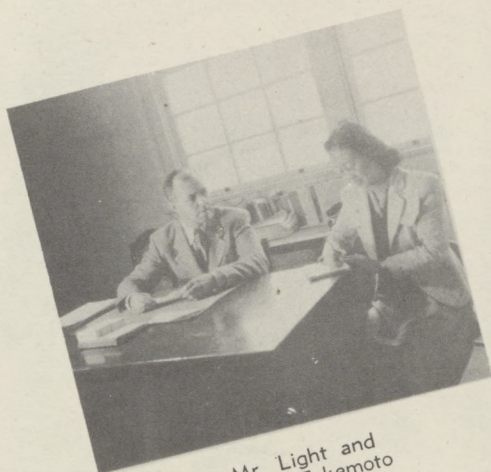
Second row: Alice Luyeda, Librarian; Kiyoko Kunishige, Library apprentice; Sumiye Naito, Attendance clerk; Michiko Furuta, Office apprentice; Yoshiko Watanabe, Office apprentice. Not pictured: Yoshi Miyamoto, Librarian.

A book overdue! I had to face those business-like, very efficient librarians and lay down my fine. The staff worked hard. It was largely through their efforts that the library was such a pleasant place in which to browse and study.

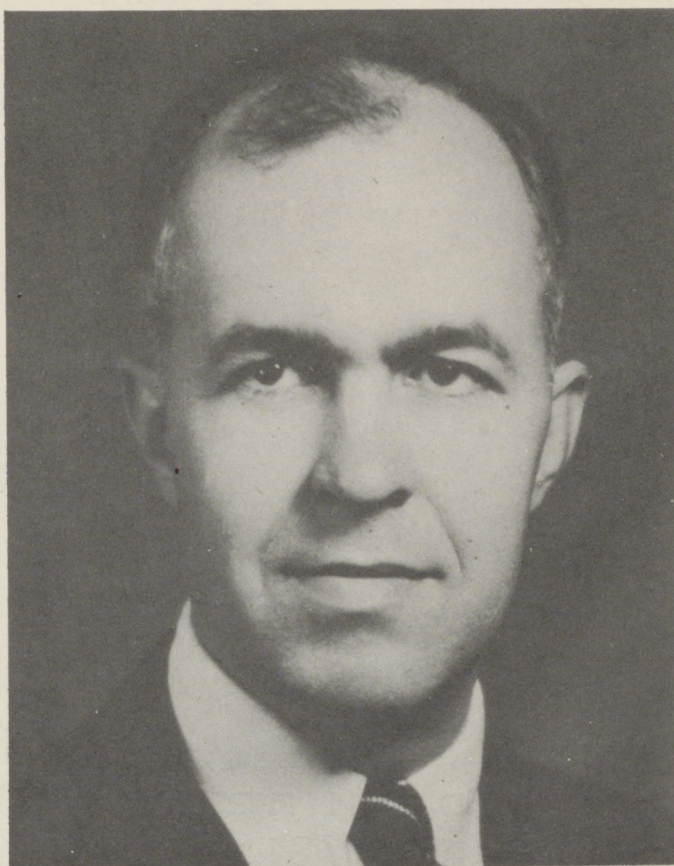




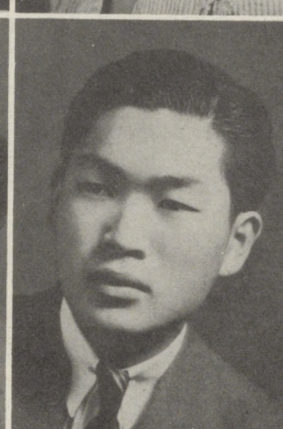
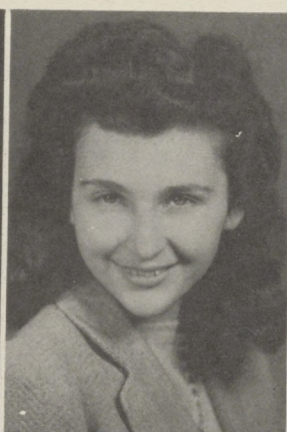
Dr. Arthur L. Harris
Director of Education



Mr. Light and
Kimika Takemoto



Mr. Jerome T. Light
Principal



Margaret Arakawa
Mabel Hibi

Helen Ellis
George Jackson

Mrs. Alice Fiske
Martha Jaquette

Martha Hays
Walter Kurihara



Here's how



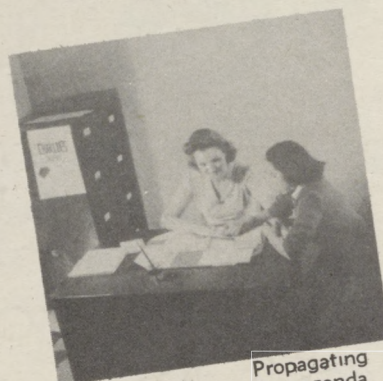
The Light Family and pets



Them forms



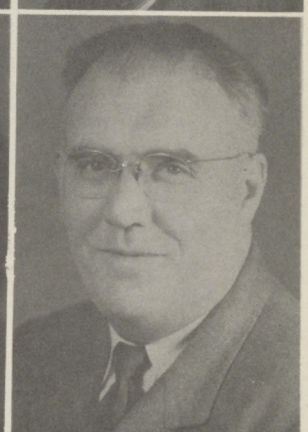
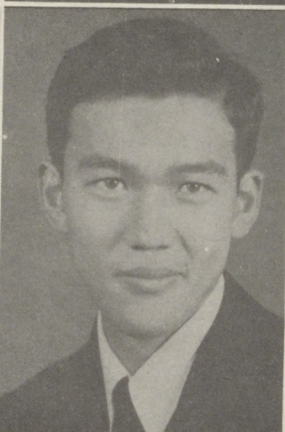
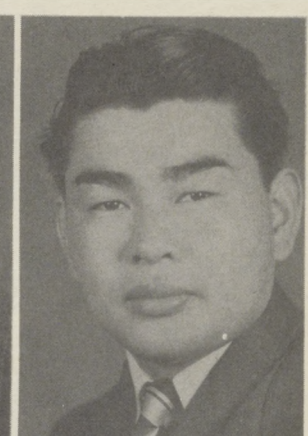
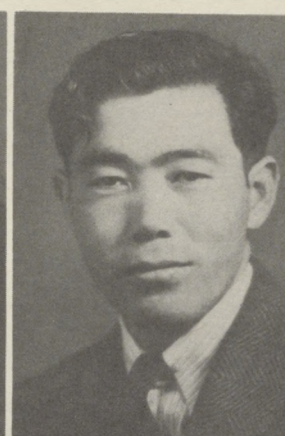
Unit I Harry Minami



Propagating
Propaganda



Little further back,
please



Jeanetta Linfield
Robert Montgomery

Sachiko Matsui
Taro Ohashi

Harry Minami
Alice Ozaki

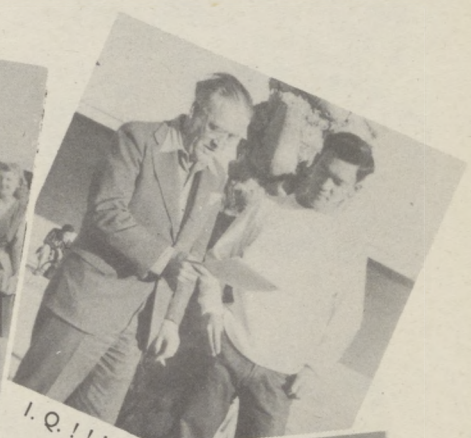
Isamu Miyamoto
Raymond Rien



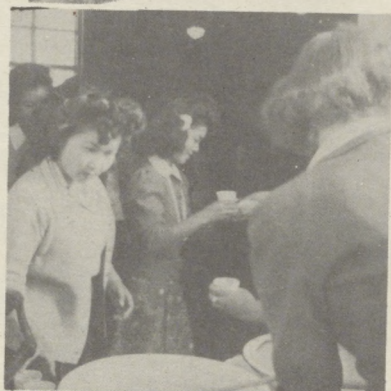
Our bet'



Grub comin' up



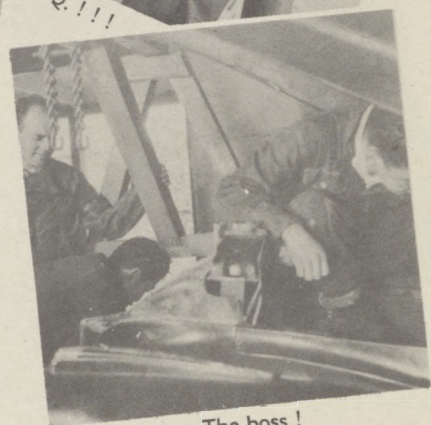
I. Q. !!!



Breadline



False. teeth?



The boss !

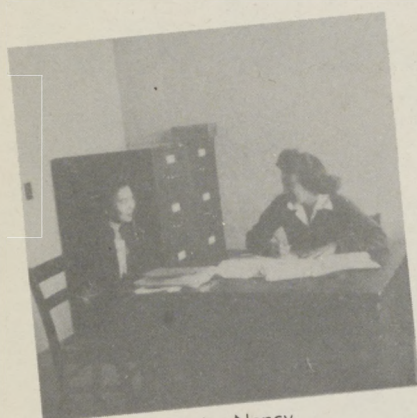


Tom Sakata,
Blossom Vigdor

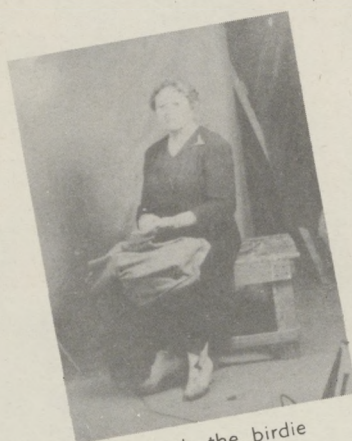
Aiko Sasaki
Barbara Washler

Myra McKee
June Watanabe

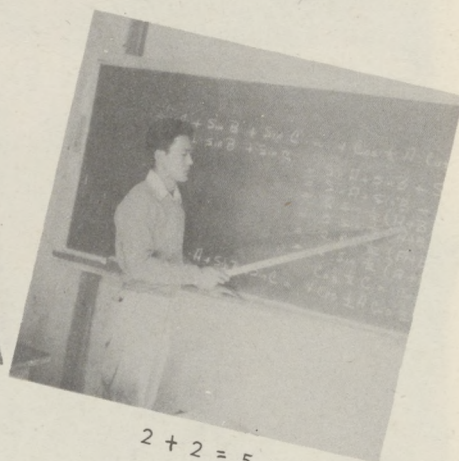
Mrs. Tei Trokey
Edith Waterman



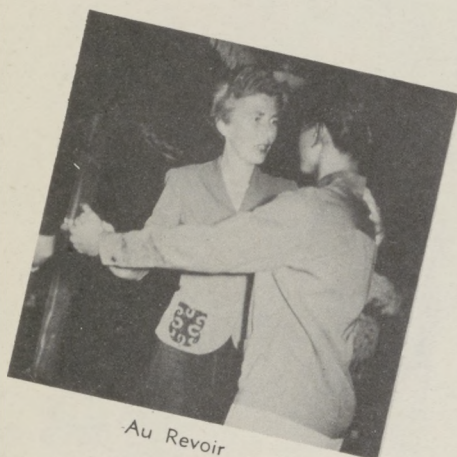
Look, Nancy



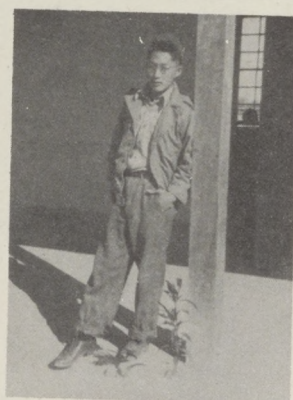
Watch the birdie



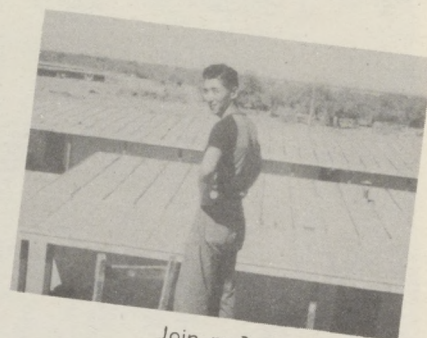
$$2 + 2 = 5$$



Au Revoir



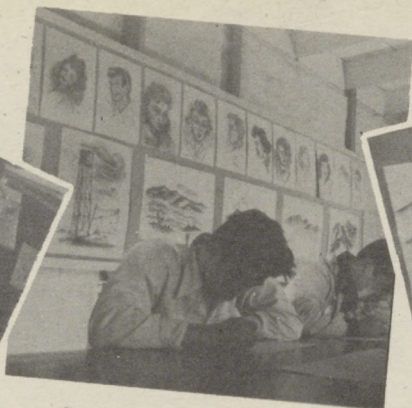
The trolley man



Join me?



There!



Rembrandt or a reasonable facsimile thereof



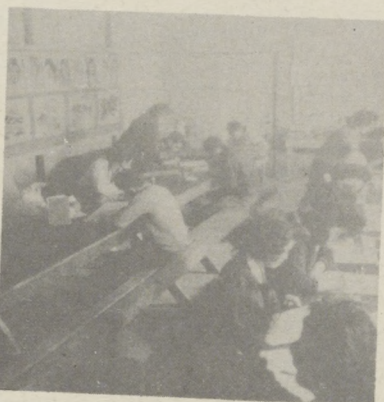
Poston III Art Gallery



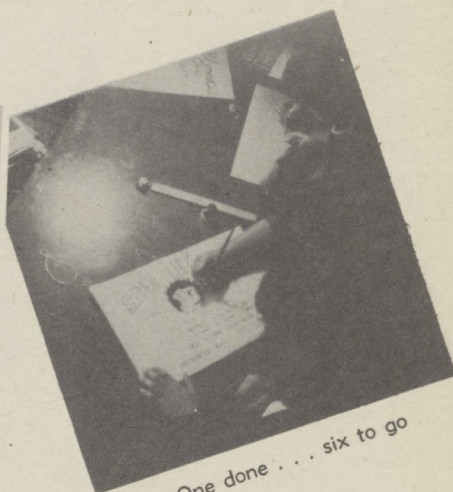
First row: Chizuko Takeda, Mary Arata, Amy Hashiguchi, Alice Higuchi, Sati Ohashi.
Second row: Tomiko Tokota, Bernice Hiratsuka, Reuw Shirokawa, Kiyoko Kunishige, Fumiko Fujimoto.



Finished product



Union hours only



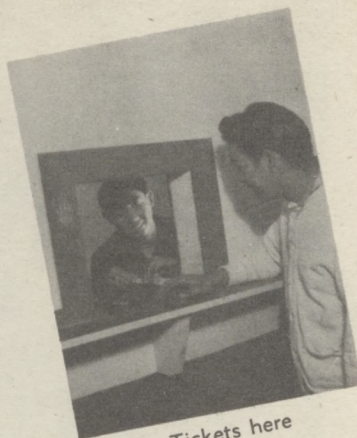
One done . . . six to go



Screen



Hot dogs! My school!



Tickets here



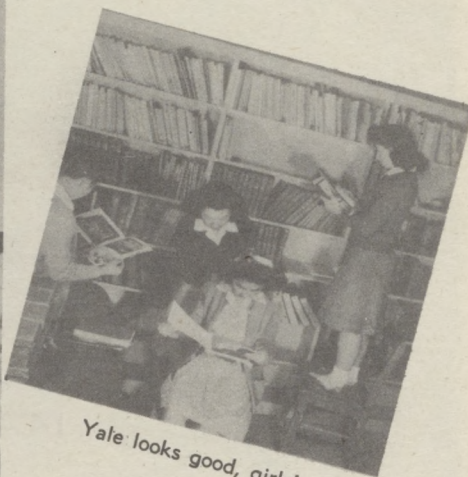
First row: Susie Kiritani, Mariye Okino, Akiko Nagai, Mary Nakagawa.
 Second row: Miss Martha Hays (advisor), Eva Kai, Elaine Morikawa, Mollie Ohashi.
 Third row: Johnny Inouye, Walter Kurihara, Toru Matsumoto.



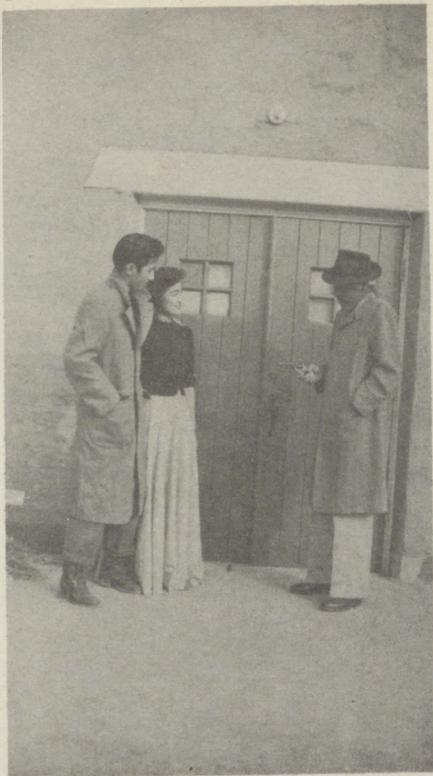
To go or not to go . . .



Ex-College Bounder



Yale looks good, girls!



This is a stick up, buddy!



Miss Helen Ellis, Director



I seem to have come too early

The Senior Play, "Tiger House", a thrill-packed mystery comedy, had us in stitches up to the very climax.

Mary Arata as Heiress Erma Laurie and Sad Domon as Mac Intosh played the romantic leads. Nancy Hosaka, Josie Hirai, Sophie Takeda, Toru Matsumoto, Kenji Iguchi, Lillian Yano and Kiyo Aoki (who nearly stole the show) composed the supporting cast.

Suspense dominated—until Arthur Hale, played by Walter Kurihara, was discovered as the villain in the final act.

CAST:

Left to right: Kiyo Aoki, Miss Ellis, Sad Domon, Mary Arata, Nancy Hosaka, Walter Kurihara, Amy Hashiguchi, Lillian Yano, Sophie Takeda, Josie Hirai.





January 24, 1945

Mr. Alan Ladd
c/o Paramount Studios
Hollywood, California

Dear Mr. Ladd:

This year the annual staff of Parker Valley High School hopes to have a memorable school annual to dedicate to former classmates now serving in the United States Army.

Would you help us out by selecting from the enclosed pictures your choice for the senior beauty queen and her two attendants. Would it be possible for you to return your selections within the next month in order for them to make our engraver's deadline?

The staff would also like very much to have an autographed picture of you for our yearbook. Thank you.

Yours very truly,

Barbara Washier
Barbara Washier
advisor

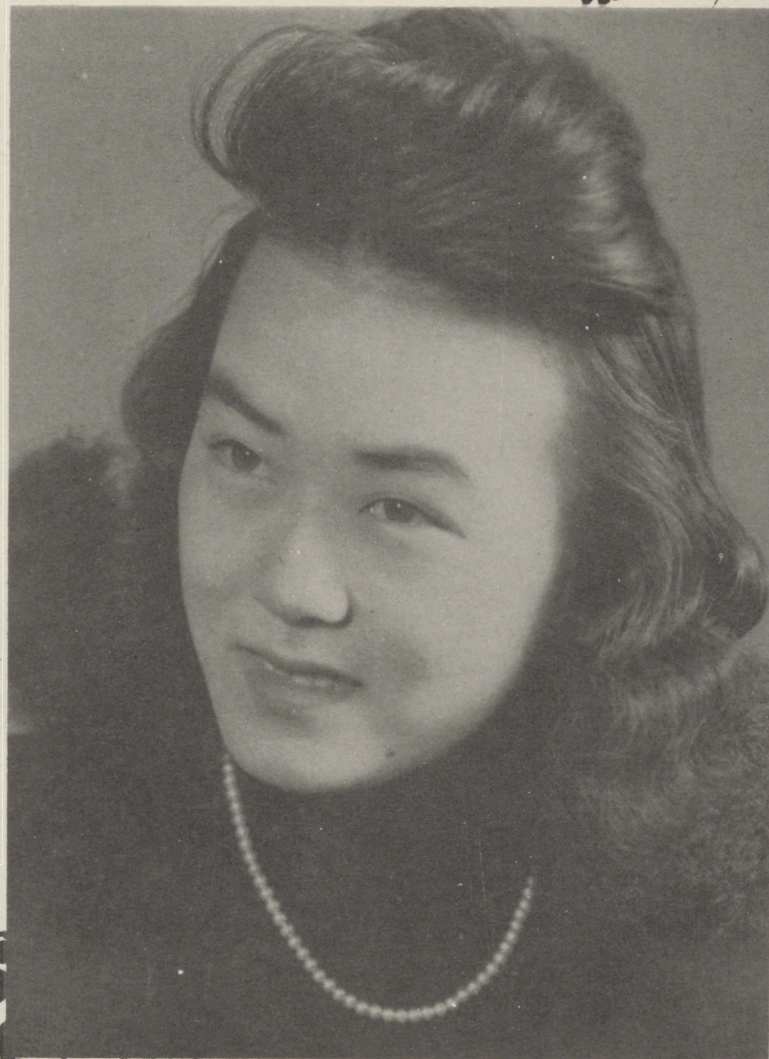
Emily Clark
Business Manager
CAMPUS ECHES staff

Enclosures



*Will write when I return leave
town of hospital - Larry to be so late
and sending to my secretary to send on
to you. Bob Ladd - Ladd*

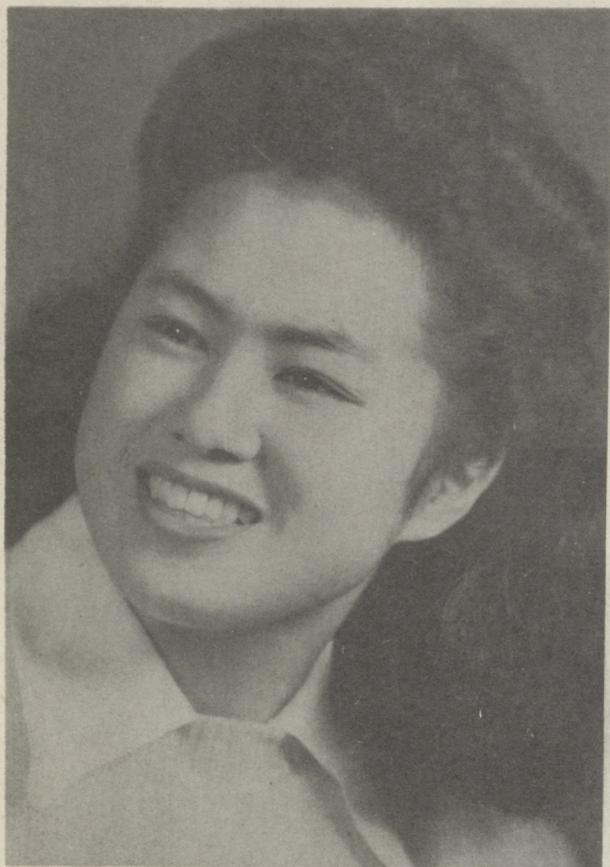
CAMPUS ECHOES QUEEN



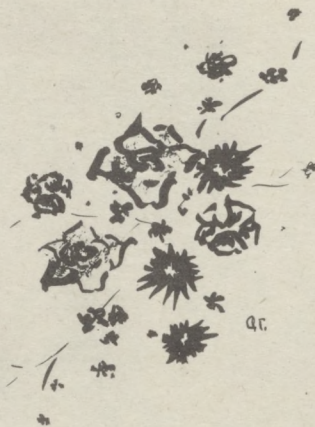
TERUKO KONISHI

CT.

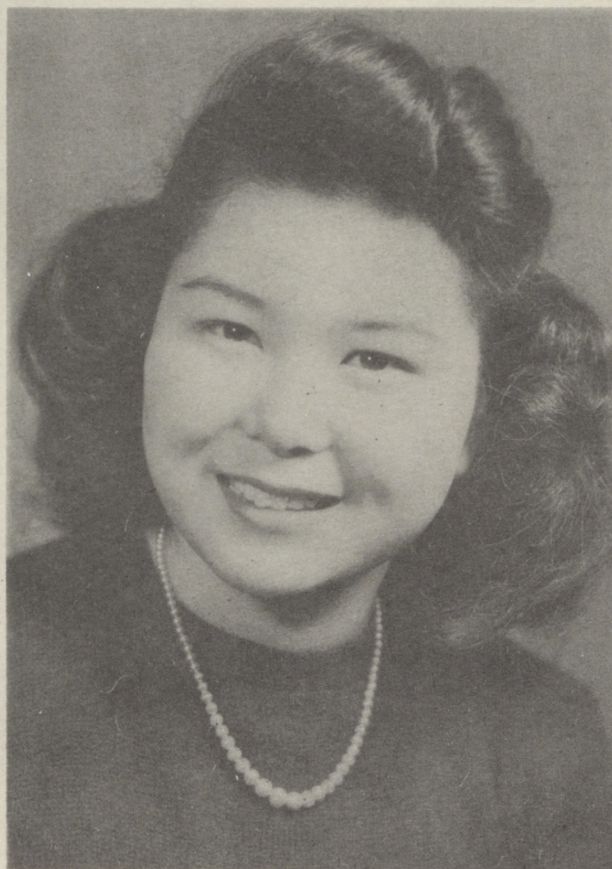
CAMPUS ECHOES QUEEN ATTENDANTS

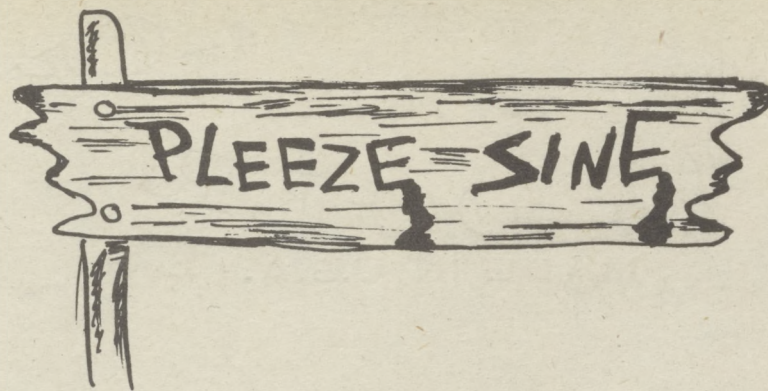


ALYCE MIZUKI

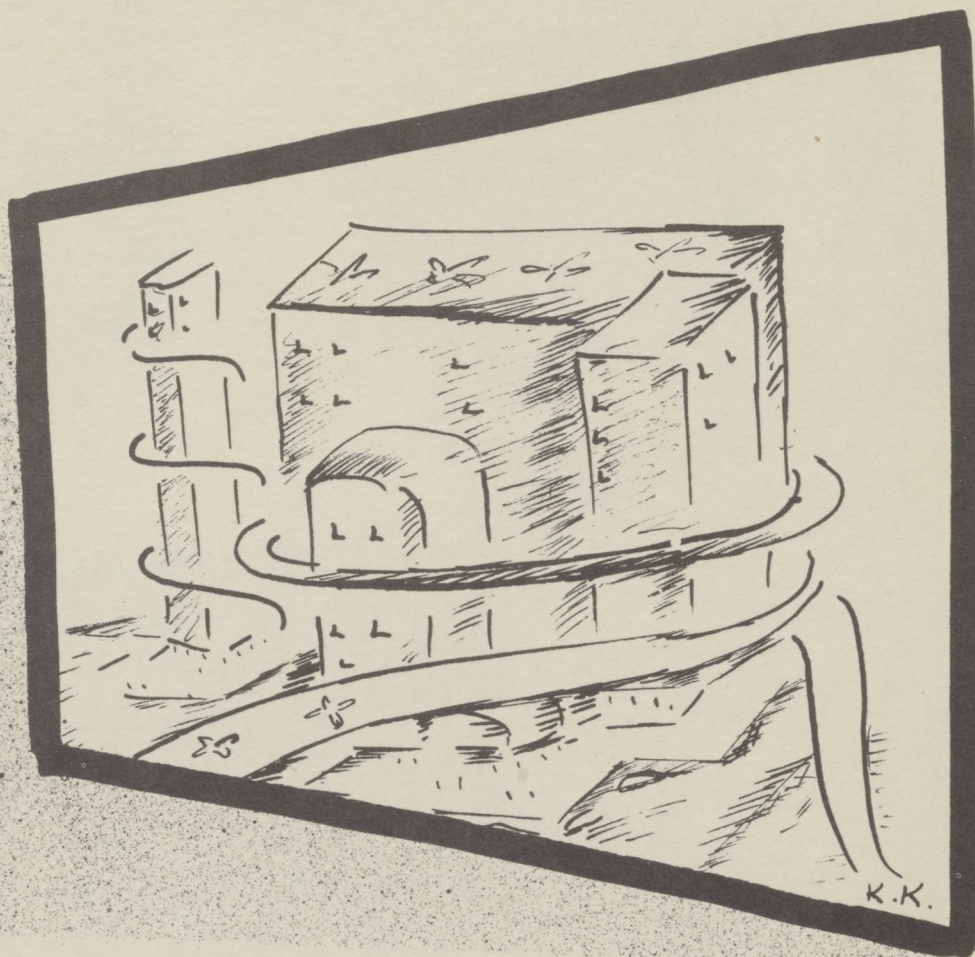


TATSUKO SUWA



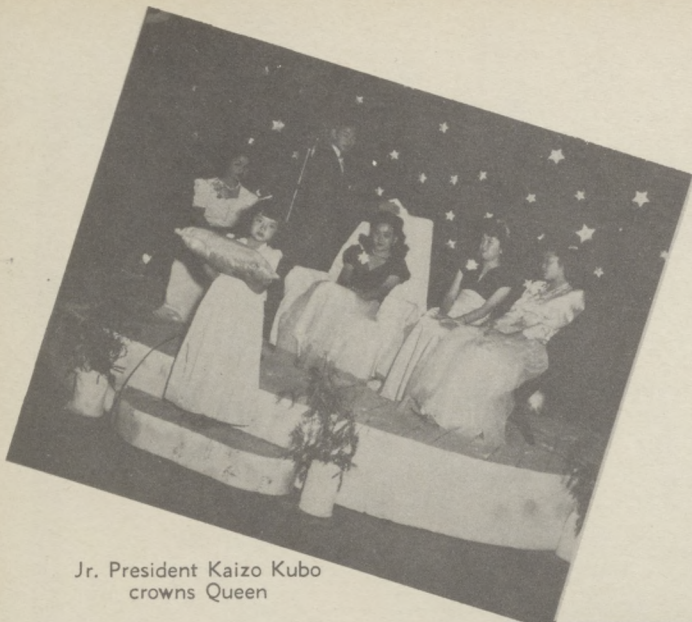






At last, a Senior!

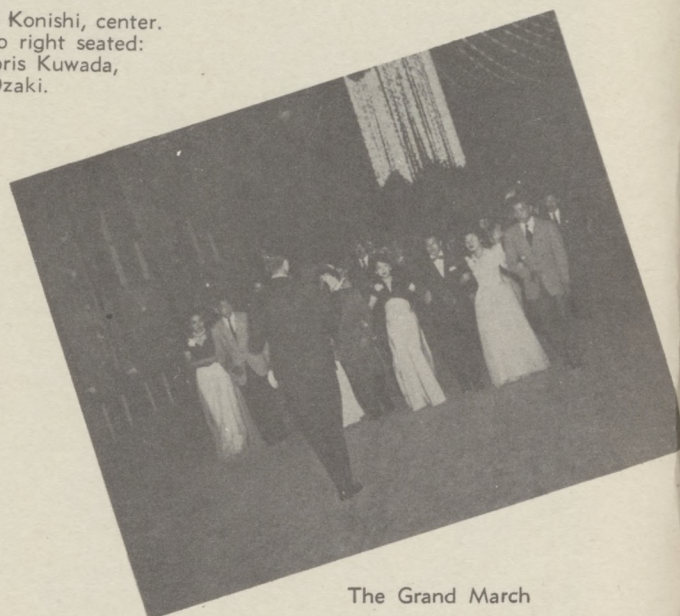
the "old man" of P.V.H.S., leaving with an "education" tucked away in the ole upper story and a "Hasta las vista" to all those I leave behind.



Jr. President Kaizo Kubo
crowns Queen



Prom Queen Teruko Konishi, center.
Attendants left to right seated:
Josie Hirai, Doris Kuwada,
Helen Ozaki.



The Grand March



President
Toru Matsumoto

FIRST SEMESTER SENIOR CABINET



Vice President
Kiyo Aoki



Secretary
Molly Ohashi



Treasurer
Yoneko Aoyagi



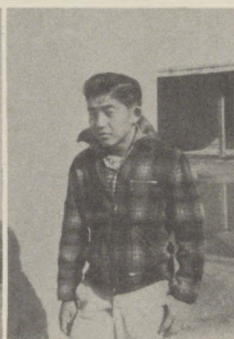
Social Chairman
George Yamada



Ann Kaneyuki
Social Chairman
Kenji Iguchi



Secretary
Sophie Takeda



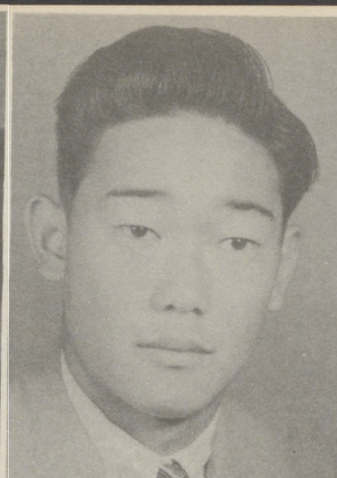
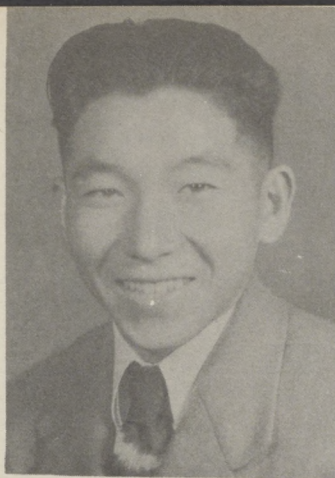
Vice President
Toru Matsumoto

SECOND SEMESTER SENIOR CABINET



President
George Yamada

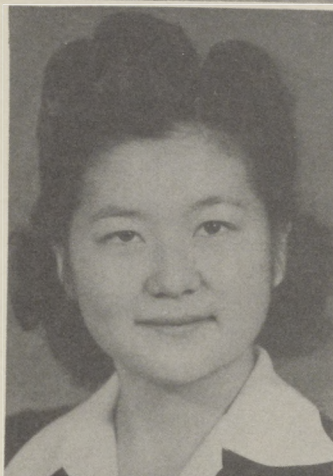
Kiyoshi Aoki
Reedley
Nat. Hon. Soc.
A.S.B. Vice Pres.
Campus Echoes
Sr. Play
Agriculture



Chieko Akiyama
San Diego
Senior Girl Scouts
Seamstress

Johnny Akiba
Ivanhoe
Boys' Cooking Club
Mechanic

Yoneko Aoyagi
Reedley
Sr. Class Sec.
Campus Echoes Ed.
Commercial



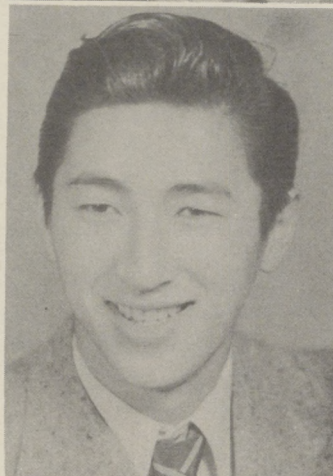
Mary Arata
San Diego
Senior Play
Girls League
Social Worker

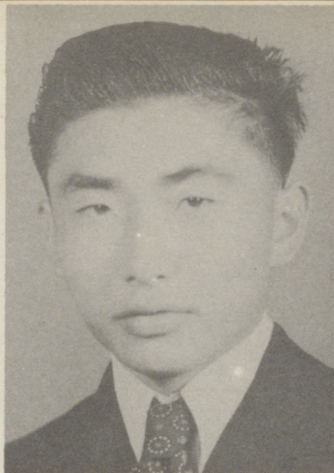


Fumiko Fujimoto
Arroya Grande
Girls League
Seamstress

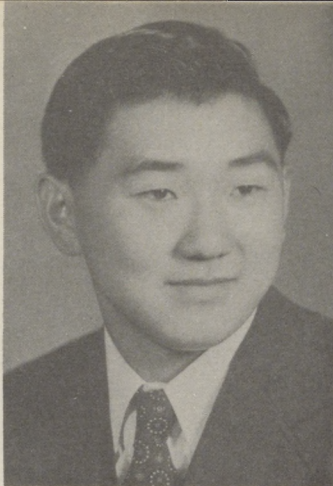
Michiko Furuta
San Diego
Girls League
Social Worker

Sadao Domon
Woodlake
Senior Play
Mechanic

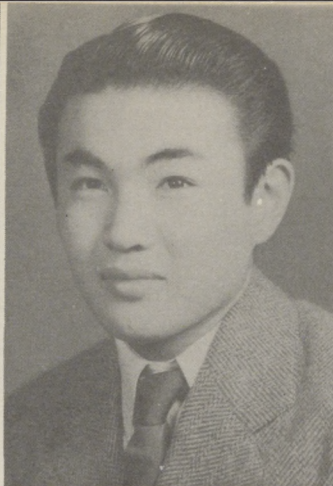




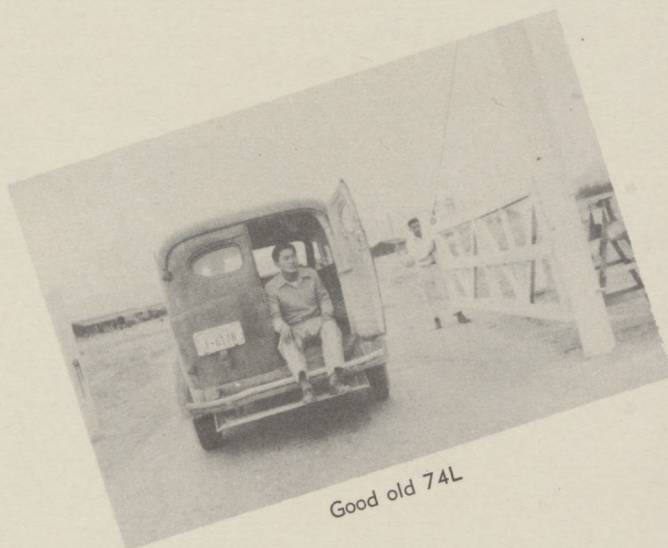
Hiroshi Hamai
Pismo Beach
Radio Club
Art Club
Mechanic



Toshi Hamai
Pismo Beach
No ambition



Jim Hasebe
Ivanhoe
Bachelor



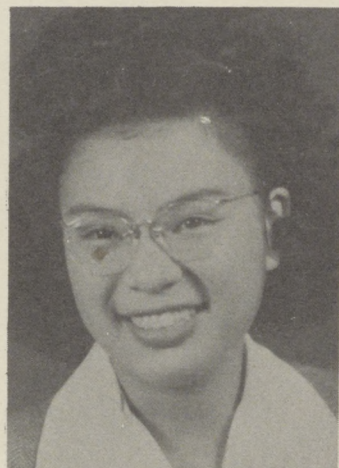
Good old 74L



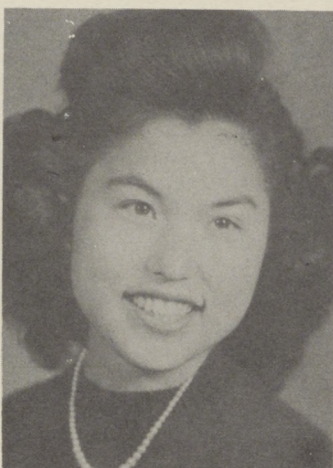
Amy Hashiguchi
San Diego
G.L. Publicity Mgr.
Campus Echoes
Beautician



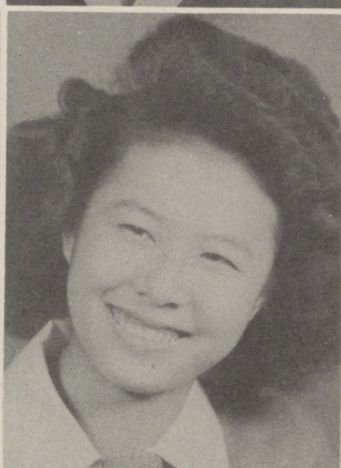
Homako Hatakeda
Visalia
Girls League
Girl Scouts
Secretary



Bernice Hiratsuka
Oakland
Girls League
Seamstress

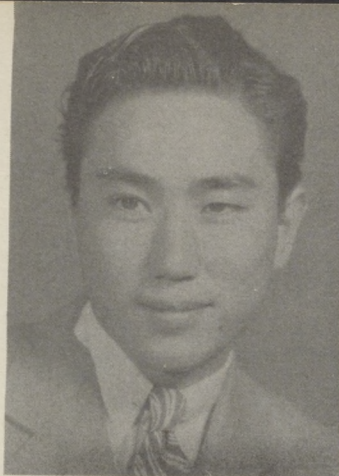


Josie Hirai
Sweetwater
Senior Play
Sr. Soc. Chmn.
Girls League
Private Secretary

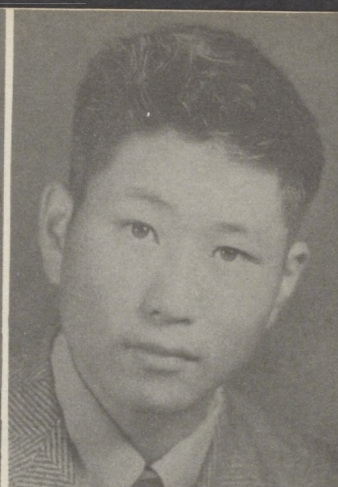


Teruko Hazama
Los Angeles
Girls League
Stenographer

Kenji Iguchi
Sweetwater
Sr. Soc. Chman
Senior Class Play

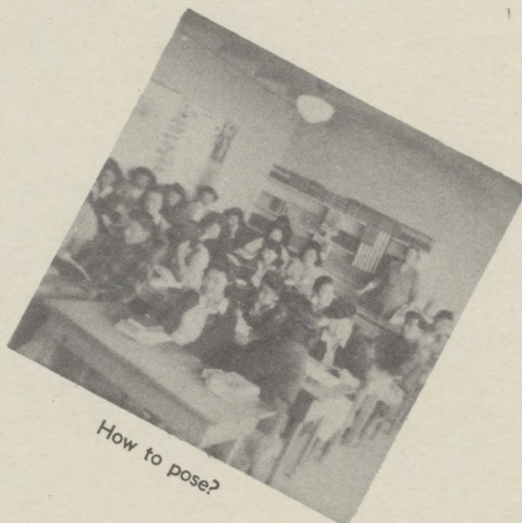
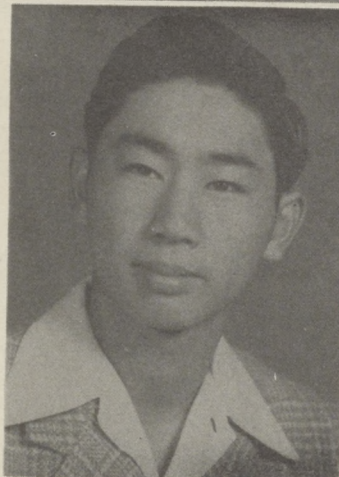


Nancy Hosaka
San Diego
Girls League
Senior Play
Stenographer



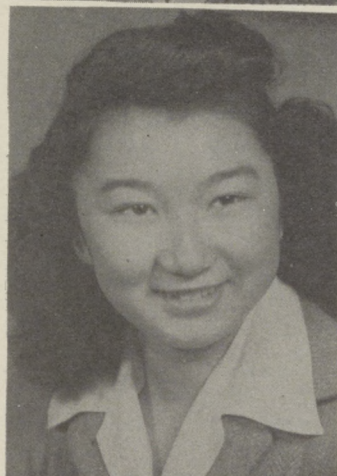
Frank Horibe
Salinas
Radio Club
Photo Art
Draftsman

Atsushi Inouye
Gardena
Campus Echoes
A.S.B. President
College Bound Club
Traveler



How to pose?

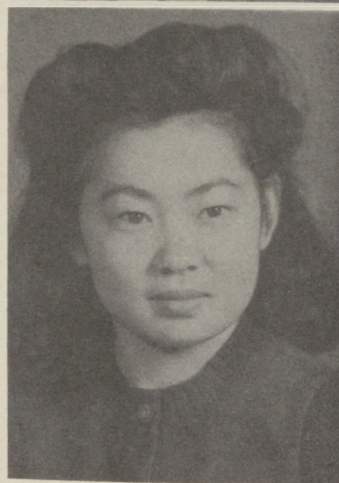
Eva Kai
Santa Cruz
College Bound Club
Girls League
Nurse

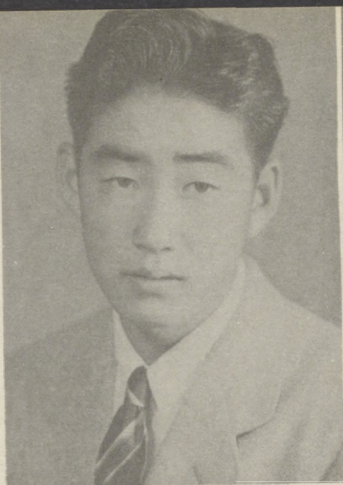


Ann Kaneyuki
San Diego
Sr. Soc. Chmn.
Office Worker

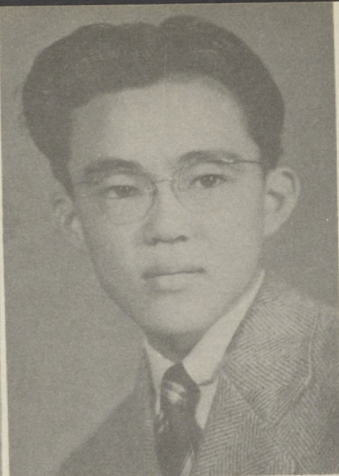
Susie Kiritani
Orosi
College Bound Club
Fashion Designer

Bennie Kamiura
Chula Vista
Girl Scouts

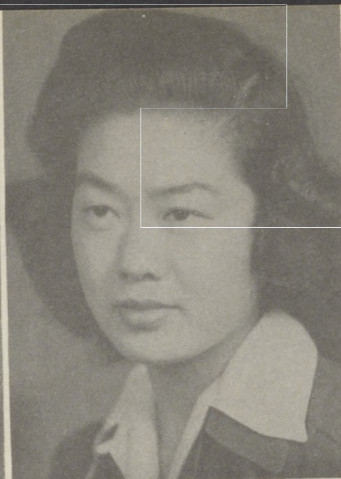




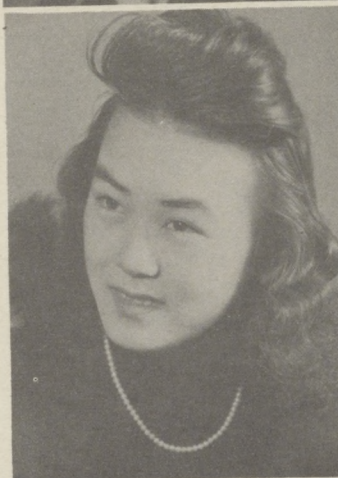
Ben Kitahata
Reedley
Boys' Cooking Club
Mechanic



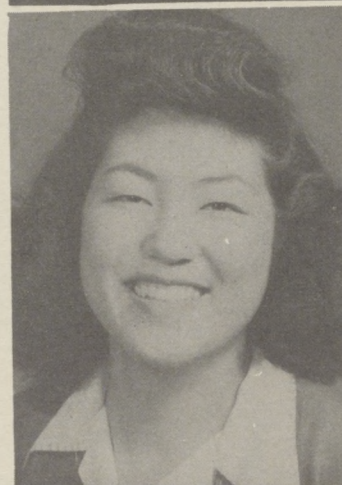
Shig Kitauchi
Orosi
Agriculture



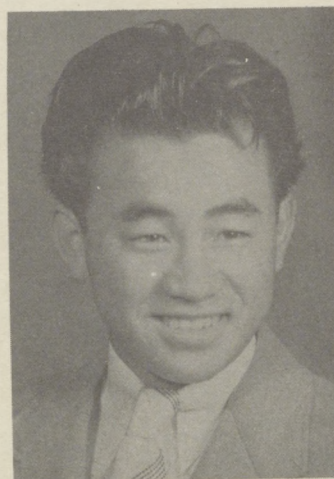
Kazue Koba
San Diego
Secretary



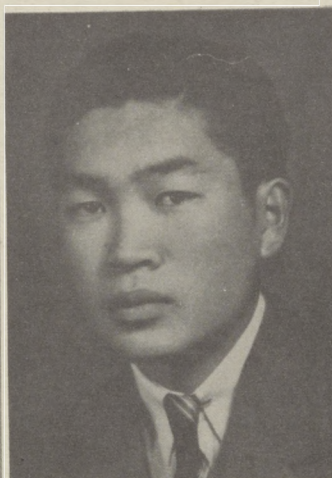
Teruko Konishi
San Diego
Campus Echoes Queen
Secretary



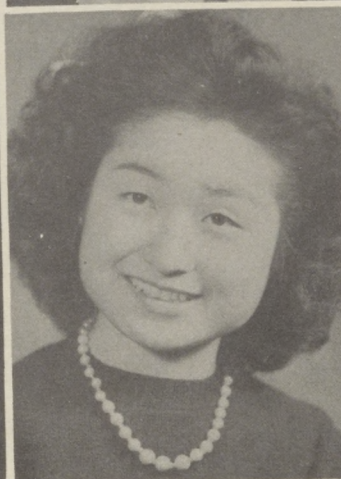
Sadako Kubo
San Diego
Girls League
Art Field



Ben Shiba
Orosi
Agriculture



Walter Kurihara
Orosi
Campus Echoes
College Bound Club (treas.)
Senior Play
Agriculture



Kiyoko Kunishige
Reedley
Girl Scouts
Campus Echoes
Fashion Designer

Misako Mayumi
Chula Vista
Girls League
Girl Scouts
Librarian

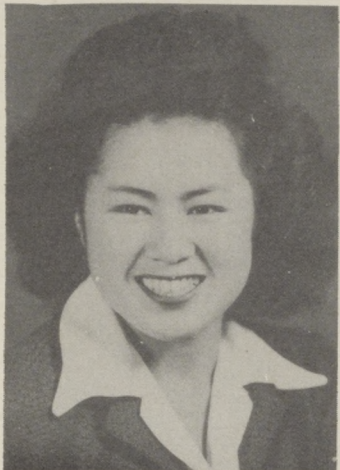


Hideko Mayeda
Dinuba
Stenographer



Toru Matsumoto
San Diego
College Bound Club
Sr. Class President
Sr. Class Vice Pres.
Engineer

Alyce Mizuki
San Jose
College Bound Club
Girls League
Attendant
Iowa Wesleyan

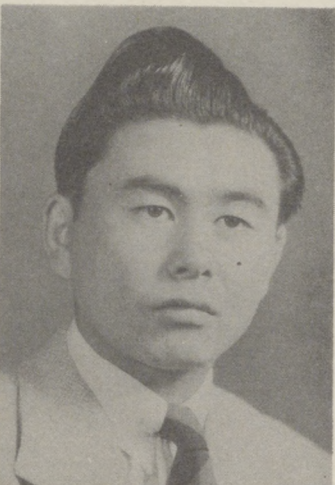


Senior Personality

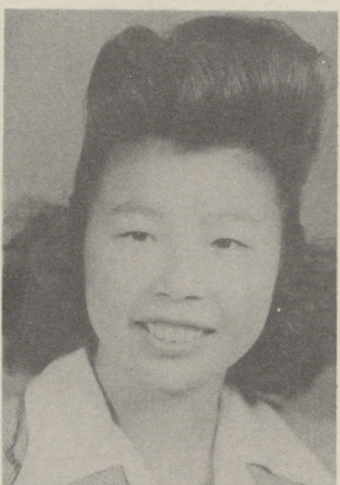
Elaine Morikawa
Visalia
College Bound Club
Nat. Hon. Soc.
Secretary



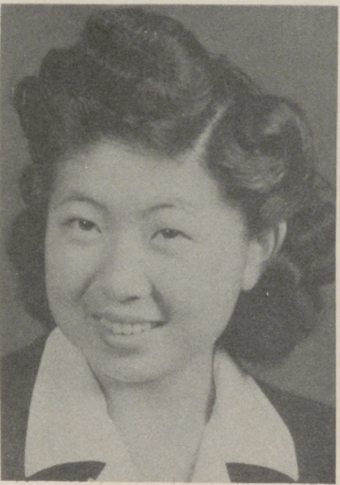
Kunio Nagata
Lompoc
Movie Producer

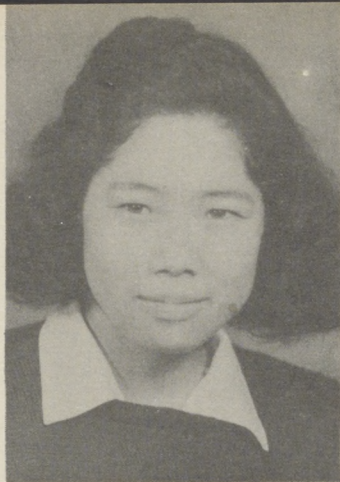


Lilyan Nagata
Dinuba
Girls League
Secretary

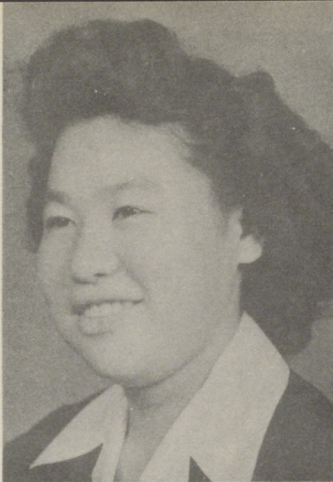


Akiko Nagai
Visalia
College Bound Club
Girls Scouts
Dietician

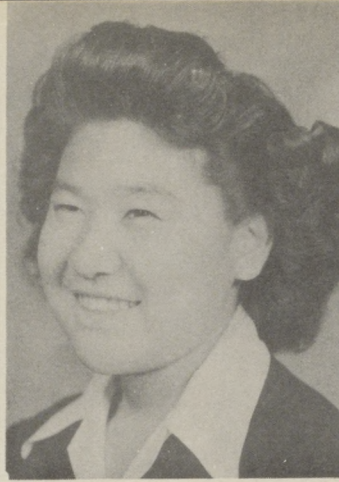




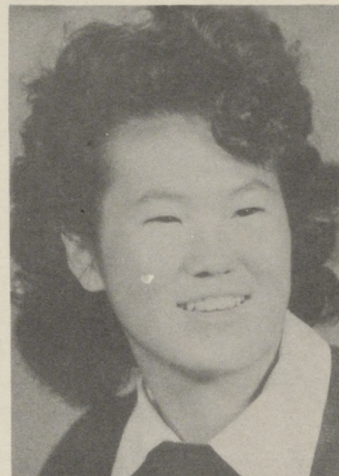
Mary Nakagawa
San Jose
A.S.B. Treasurer (2 Sem.)
College Bound Club (V.P.)
Campus Echoes
Nat. Hon. Soc.
Girl Scouts President
Nurse Cadet



Masako Nakahara
Visalia
Girl Scouts
Seamstress



Michiko Nakahara
Visalia
Girl Scouts
Nurse



Masako Nakamura
Arroya Grande
College Bound Club
Girls League Sports Mgr.
Pharmacist.



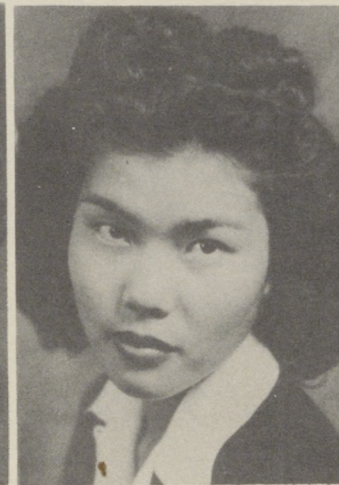
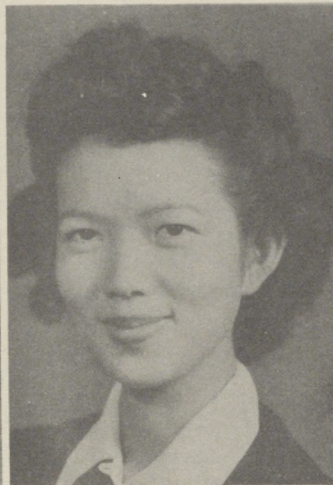
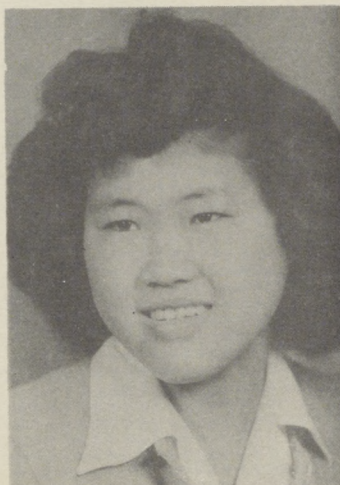
Smile, Please



Teruko Nakamura
Arroya Grande
Stenographer

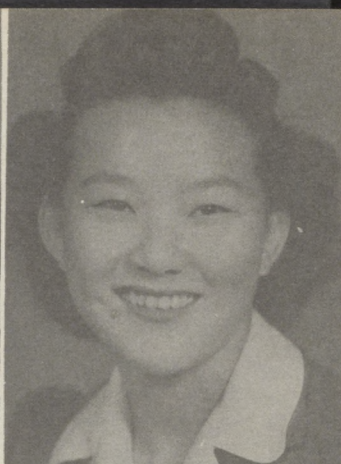
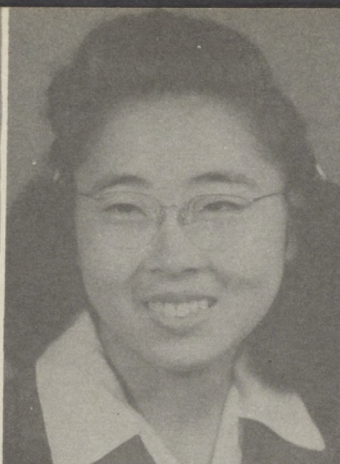
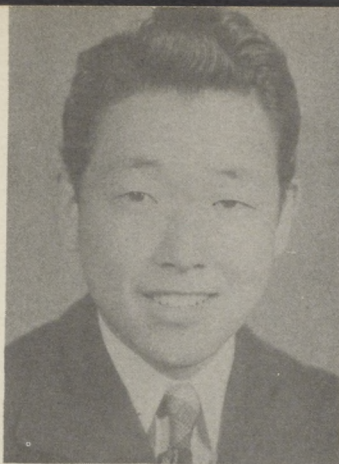
Kiyoka Okino
Santa Cruz
Girls League
Commercial

Sati Ohashi
Wilmington
Occupational Therapist



Mollie Ohashi
Wilmington
A.S.B. Secretary
College Bound Pres.
Sr. Class Secretary
Campus Echoes
Nat. Hon. Soc.
Academic

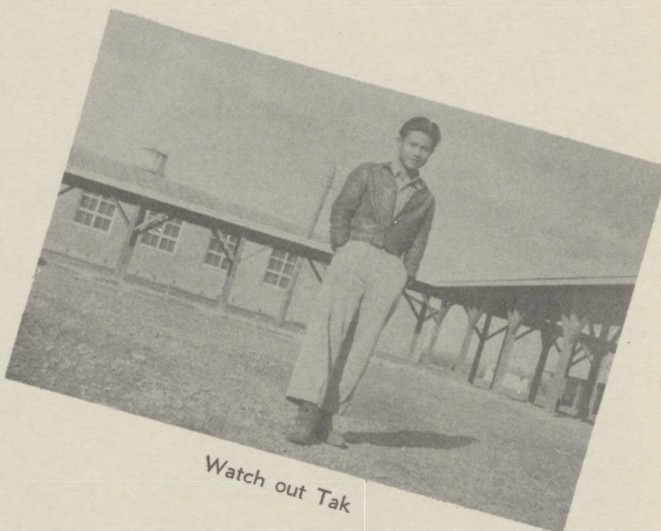
Harvey Sadahiro
Arroyo Grande
Boy's Cooking
Mechanic



Betty Oto
San Jose
Commercial

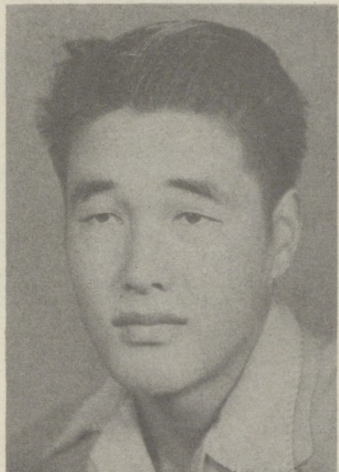
Mariye Okino
Visalia
Girls League Secretary
College Bound Secretary
Campus Echoes
Nurse Cadet

Hiroko Sakamoto
San Jacinto
Girl Scouts
Nurse



Watch out Tak

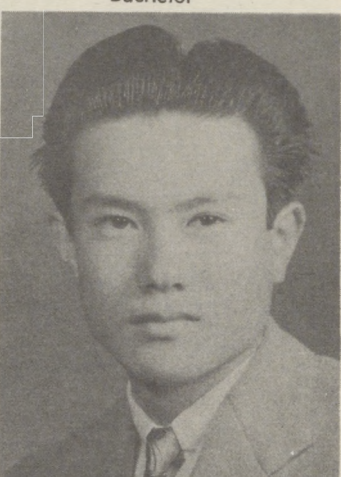
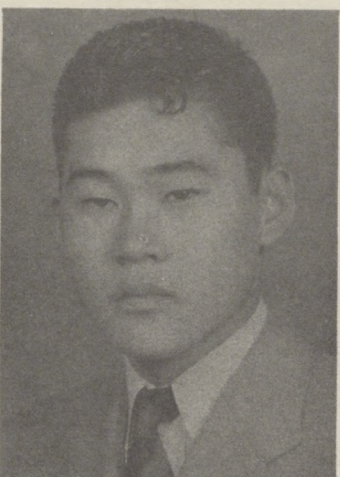
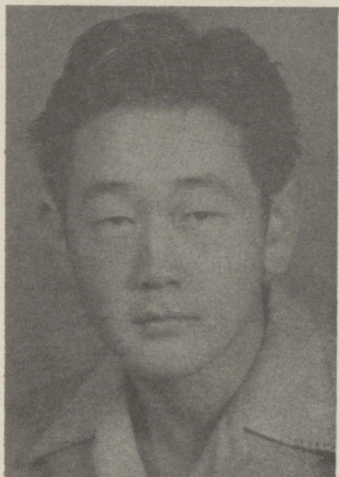
Jiro Sakamoto
Los Angeles
Boys' Cooking Club
Mechanic

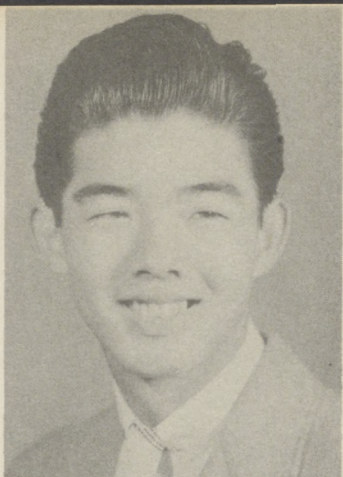


Kenji Sekishiro
Visalia
Boys' Cooking Club
Mechanic

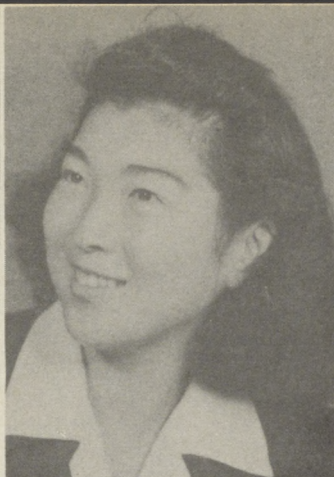
Yutaka Sera
Visalia
Bachelor

Jim Sasaki
Reedley
Boys' Cooking Club
Mechanic





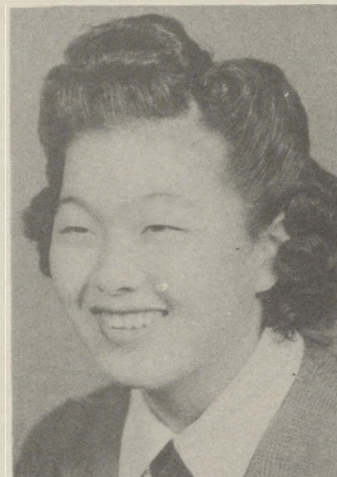
Seichi Shinoda
Orosi
A.S.B. President
College Bound Club (treas.)
Dentist



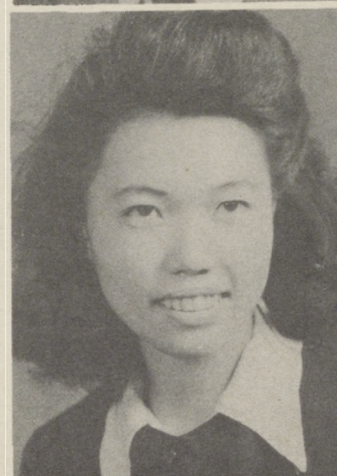
Reuw Shirokawa
Santa Barbara
Student Council
Girls League
Girl Scouts
Nat. Hon Soc.
Secretary



Tatsuko Suwa
San Diego
Girls League
Attendant
Secretary



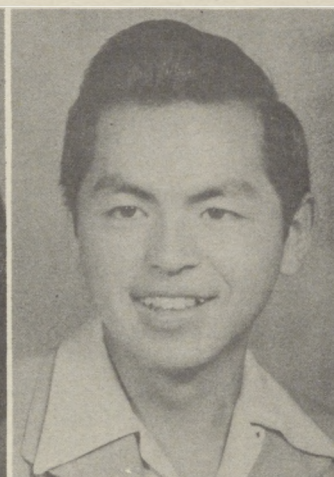
Betty Takanishi
Reedley
Girls League
Artist



Chizuko Takeda
La Mesa
Designer



Tomoe Tanaka
Monterey
Secretary

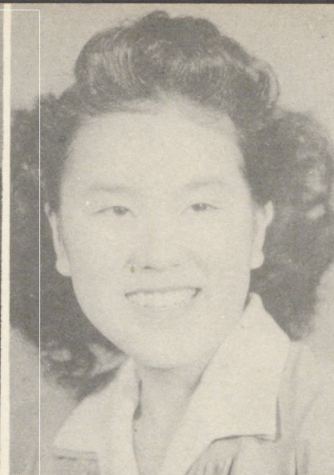
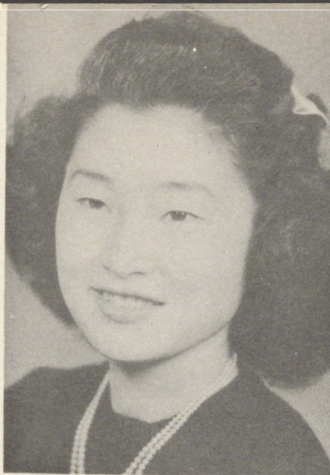


Mas Tanaka
Coronado
Campus Echoes
Movie Industry



Sophie Takeda
San Diego
Sr. Class Sec.
Sr. Class Play
Ass't Dental Nurse

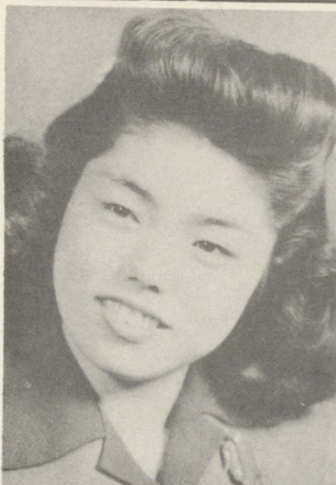
Mollie Uyeji
San Diego
Girls League
Private Secretary



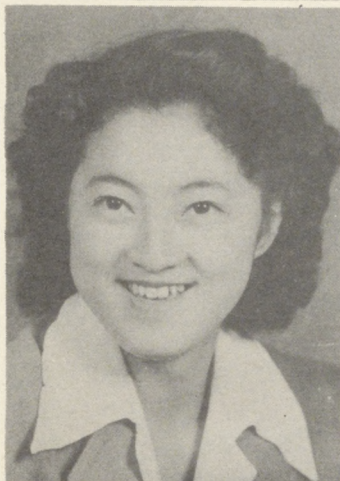
Masako Uota
Woodlake
Girls League
Dress Designer

Sayoko Togioka
Dinuba
Seamstress

Tomoko Uzhashi
Los Angeles
A.S.B. Secretary
Campus Echoes
Beautician



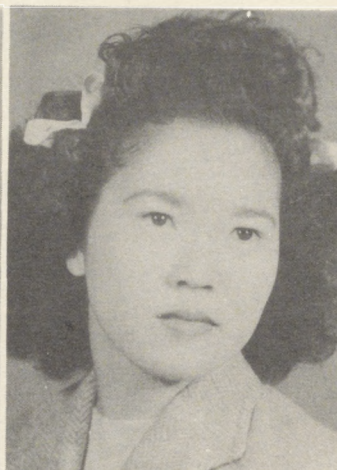
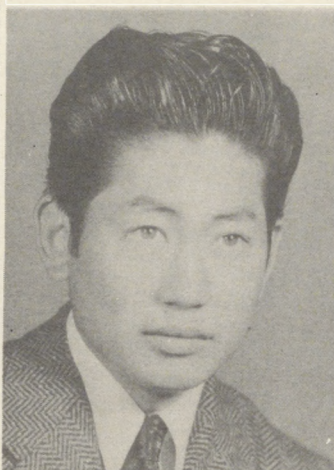
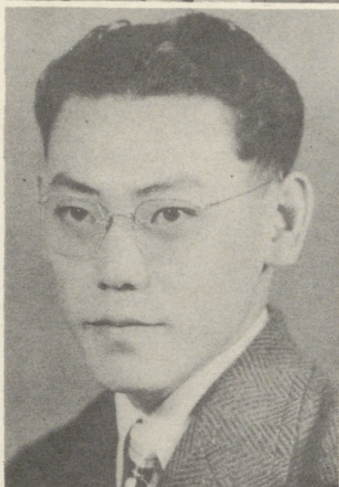
Yoshiko Watanabe
Visalia
School Office
Medical



George Yamada
San Diego
Sr. Class Pres.
Anything

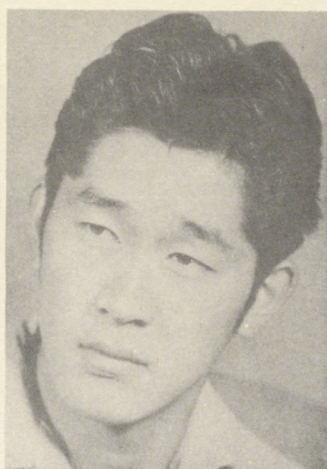
Jane Yamaguchi
Pacific Beach
Girl Scouts
Nurse

Bill Yamada
Reedley
Radio Club
Radio Engineer





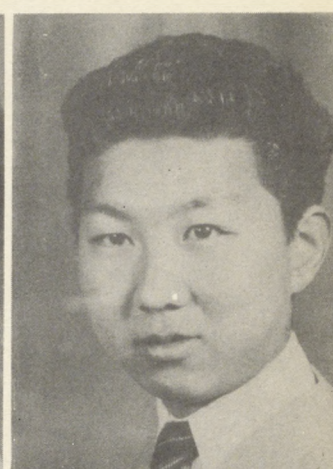
Lillian Yano
El Cajon
Psychology



Takashi Yokota
Reedley
Agriculture



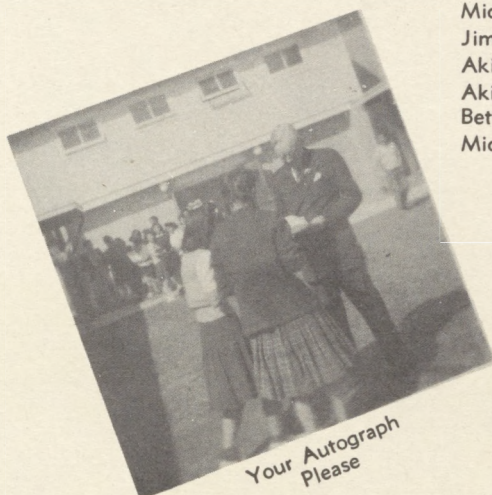
Tomiko Yokota
Sr. Girl Scouts
Art Field



Roy Kusumoto
San Diego

FORMER CLASSMATES

Florence Amino
Ayako Hosaka
Richard Karasawa
George Kasai
Henry Kubota
Fred Matsuda
George Matsumoto
Marian Matsumoto
Yutako Matsushima
Toshiye Miyamoto
Michiyuki Nakamura
Terry Nishida
Tom Segawa
Miyeko Shiba
Roy Shimaji
Mickey Shinoda
Jim Shinohara
Akira Tajiri
Akira Tanaka
Betty Wake
Michiko Yasuda

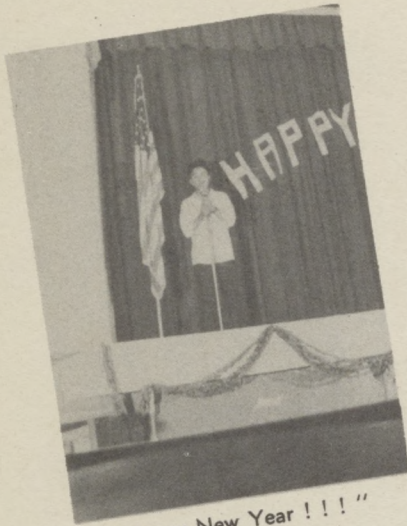


Your Autograph
Please

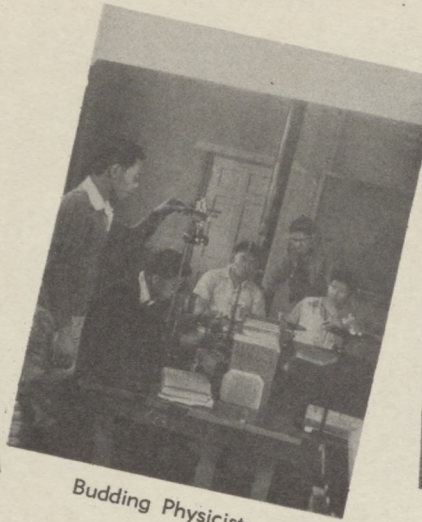


Mr. Myer and Mr. Mills
visit Parker Valley

SENIOR SNAPS



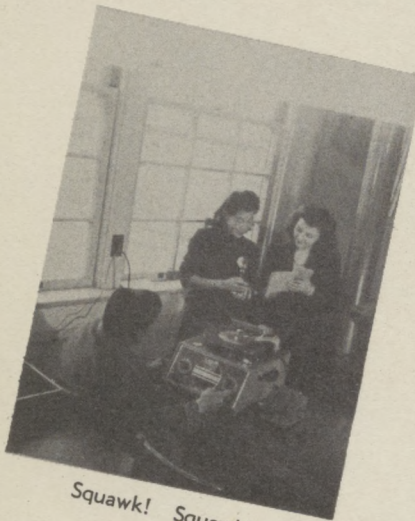
"Happy New Year !!!"



Budding Physicists



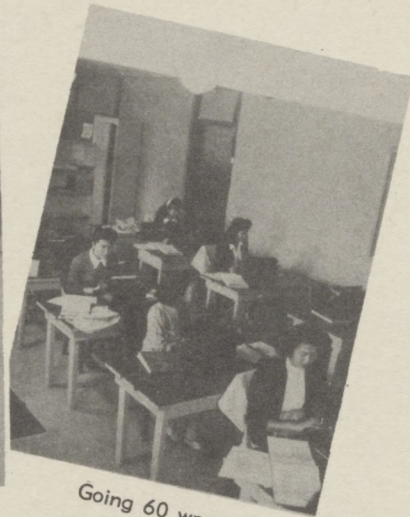
Future Iowan



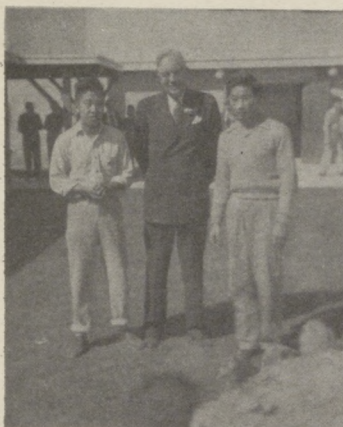
Squawk! Squawk!



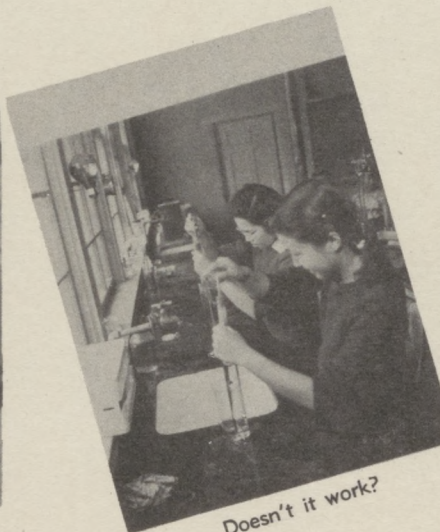
Senior class advisors



Going 60 wpm



School greets Mr. Dillon Myer



Doesn't it work?



Two-legged scenery

SEARS, ROEBUCK and Co.



Shop at Sears
and save ...

Los Angeles 54, California.

COMPLIMENTS OF

**POSTON COOPERATIVE
ENTERPRISE, INC.**

POSTON, ARIZONA

Photography for this Annual by

KUNKLE AND WILCOX

331 W. Washington St.

Phone 3-4563

Phoenix, Arizona

COMMERCIAL PHOTOGRAPHERS

Specialists in
High School and College Annuals

Congratulations Graduates
From
**"AMERICA'S FINEST"—MARUSHO SHOYU AND
FOOD PRODUCTS**

By
SHOWA SHOYU BREWING COMPANY

Main Office
Rt. 2, Box 51
GLENDALE, ARIZONA

Distributing Offices
1917 Lawrence Street
DENVER, COLORADO

FINE QUALITY WOOLENS ---

**COMPLETE RANGE OF HIGH CLASS OVERCOATINGS AND
SUITINGS FOR MEN AND WOMEN**

Skirt Ends — Trouser Lengths

COTTONS AND RAYONS — PLAIN AND PRINTED

L. B. WOOLEN & TRIMMING CO.

530 S. Los Angeles Street

Los Angeles, 13, California

Samples furnished upon request. Give details as to what you intend to make.

PLEASE DO NOT SEND REMITTANCE WITH ORDER—WE SHIP C. O. D. ONLY

THANKS GOES TO:

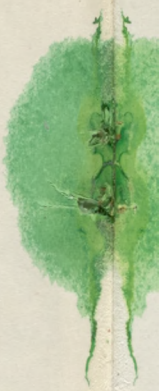
Arizona Lithographing Company
Universal Bookbindery, Inc.
Arizona Trade Bindery
Mr. Kunkle and Mr. Wilcox
Mrs. Pauline Bates Brown
Mr. Paul Shintaku
Parker Valley Student Body



So long everybody.
I hope our Campus
Echoes picture album
is one you will keep
always and enjoy
often.

Till we meet again—

Poston Pete



72.36



